

Data Path : Z:\pestpcbsrv\HPCHEM1\ECD\_D\Data\PD111225\  
 Data File : PD091116.D  
 Signal(s) : Signal #1: ECD1A.ch Signal #2: ECD2B.ch  
 Acq On : 12 Nov 2025 17:01  
 Operator : AR\AJ  
 Sample : Q3600-01  
 Misc :  
 ALS Vial : 50 Sample Multiplier: 1

Instrument :  
 ECD\_D  
 ClientSampleId :  
 CENTRAL-ROW-CONCRETE

Integration File signal 1: autoint1.e  
 Integration File signal 2: autoint2.e  
 Quant Time: Nov 12 21:28:12 2025  
 Quant Method : Z:\pestpcbsrv\HPCHEM1\ECD\_D\Method\PD101725.M  
 Quant Title : GC Extractables  
 QLast Update : Fri Oct 17 17:43:28 2025  
 Response via : Initial Calibration  
 Integrator: ChemStation

Volume Inj. : 1 µl  
 Signal #1 Phase : ZB-MR2 Signal #2 Phase: ZB-MR2  
 Signal #1 Info : 30M x 0.32mm x0.5 Signal #2 Info : 30M x 0.32mm x 0.25µm

Compound	RT#1	RT#2	Resp#1	Resp#2	ng/ml	ng/ml
-----						
System Monitoring Compounds						
1) SA Tetrachlo...	3.544	2.874	36762649	382.1E6	11.805	12.832
28) SA Decachlor...	9.067	8.060	57385852	414.5E6	12.267	13.683
Target Compounds						
2) A alpha-BHC	3.973f	3.379	225975	1171700	0.031	0.023 #
3) MA gamma-BHC...	0.000	3.723	0	555394	N.D.	0.012 #
4) MA Heptachlor	4.945f	4.070	3646590	3547030	0.652	0.080 #
5) MB Aldrin	5.291f	4.372	113821	820911	0.017	0.018
6) B beta-BHC	4.536f	4.023	145082	5209085	0.055	0.263 #
7) B delta-BHC	4.771	4.258	4357595	2781516	0.644	0.058 #
8) B Heptachlo...	0.000	4.882f	0	1581762	N.D.	0.037 #
9) A Endosulfan I	6.087f	5.224	161760	166747	0.029	0.004 #
10) B gamma-Chl...	5.936	5.120	1502919	1104246	0.253	0.025 #
11) B alpha-Chl...	5.994f	5.183	7912664	5070182	1.280	0.118 #
12) B 4,4'-DDE	6.189	5.365	1309516	14584267	0.246	0.333 #
14) MA Endrin	6.568	5.786	905555	19314149	0.183	0.477 #
15) B Endosulfa...	6.773	6.082	560694	4166878	0.112	0.111
16) A 4,4'-DDD	0.000	5.918	0	3451091	N.D.	0.095 #
17) MA 4,4'-DDT	7.015	6.172	1050553	5341047	0.256	0.152 #
18) B Endrin al...	6.937f	6.257	980821	4288425	0.268	0.155 #
19) B Endosulfa...	7.142	6.471	167383	1369515	0.036	0.038
20) A Methoxychlor	0.000	6.748	0	644190	N.D.	0.037 #
21) B Endrin ke...	0.000	6.972	0	111752	N.D.	0.003 #
22) Mirex	0.000	7.176	0	10067127	N.D.	0.392 #
23) Chlordane-1	0.000	3.891	0	3435170	N.D.	2.756 #
24) Chlordane-2	5.232	4.502f	713228	8606964	3.693	6.598 #
25) Chlordane-3	5.936	5.120	1502919	1104246	1.970	0.284 #
26) Chlordane-4	0.000	5.183	0	5070182	N.D.	1.517 #
27) Chlordane-5	6.872	6.082	377076	4166878	2.510	2.823
-----						

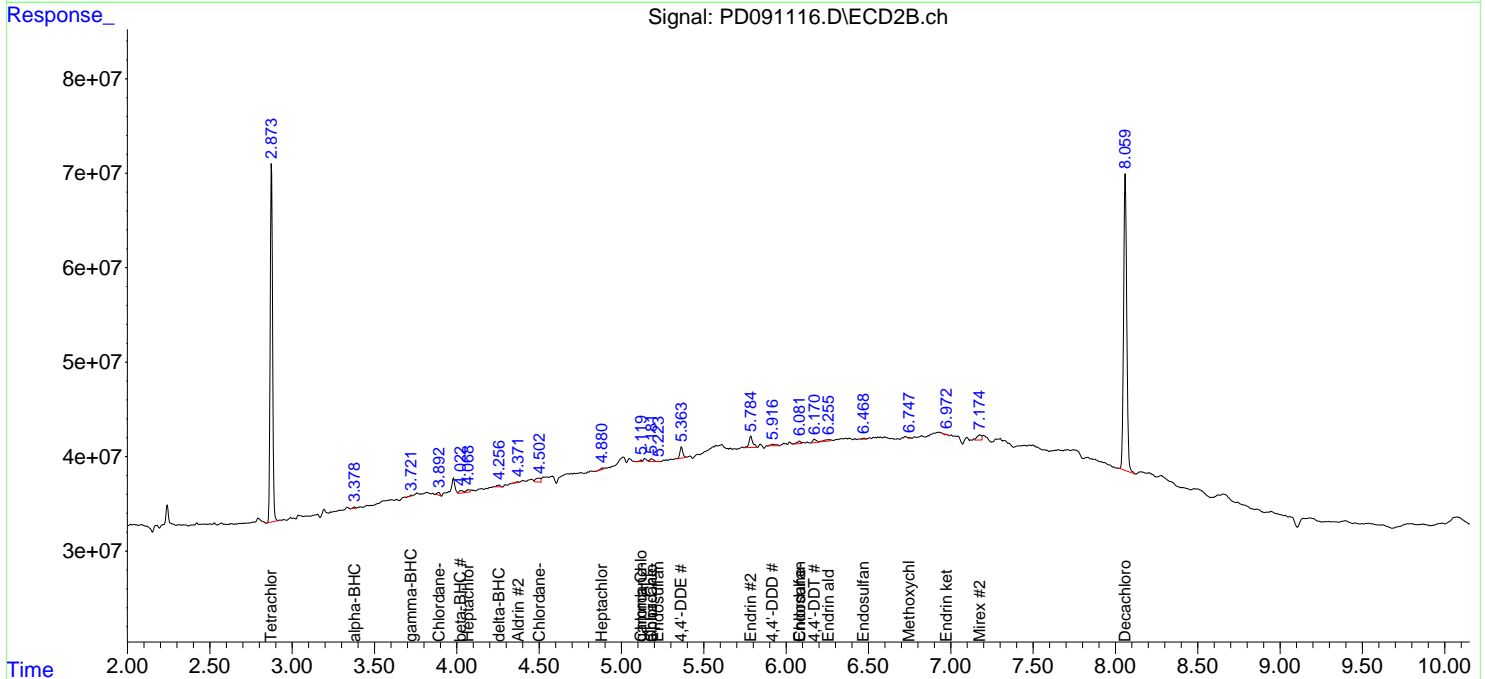
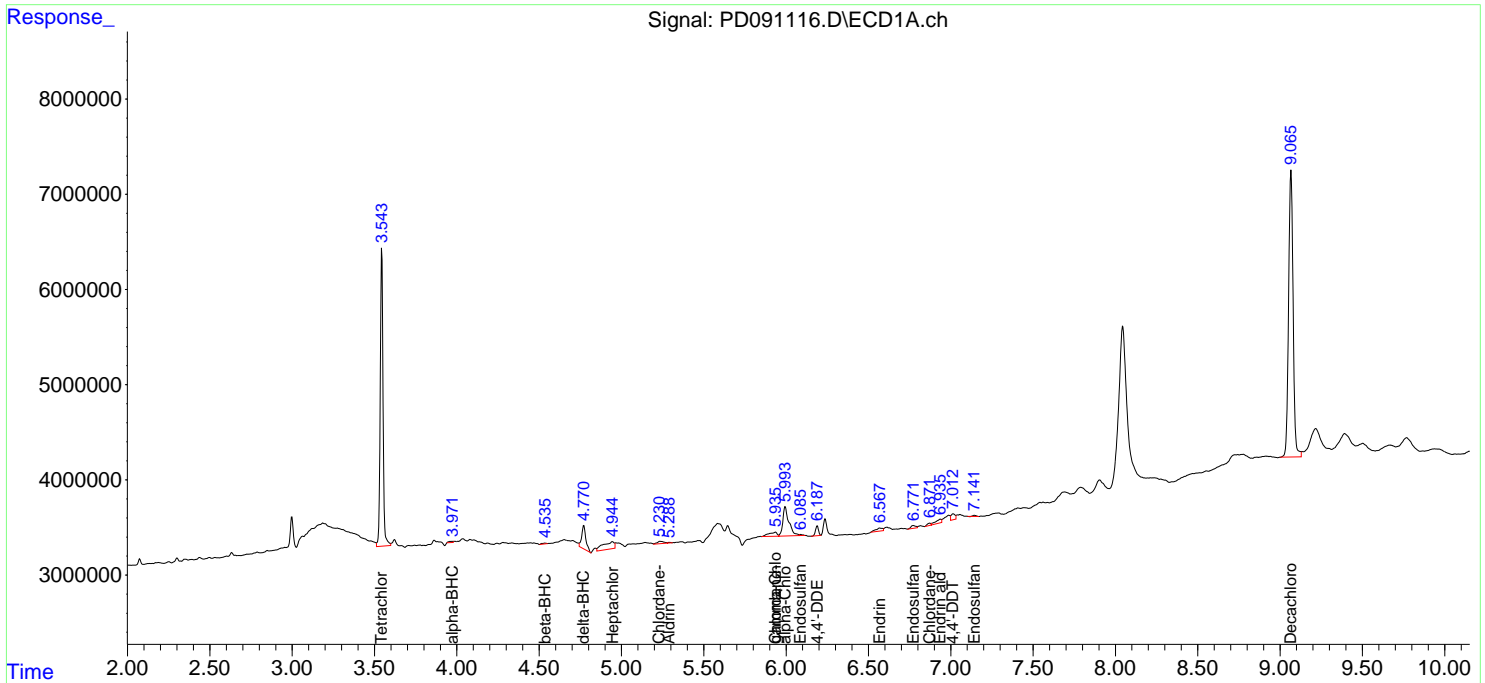
(f)=RT Delta > 1/2 Window (#)=Amounts differ by > 25% (m)=manual int.

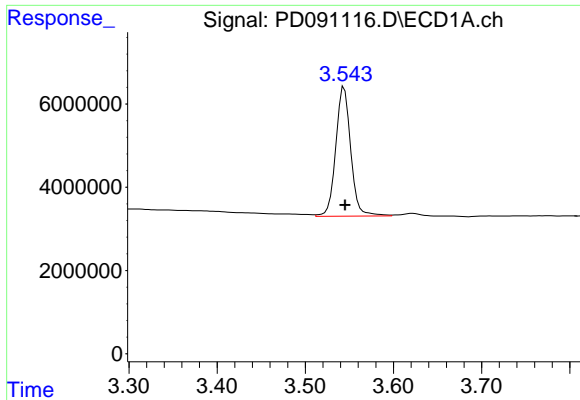
Data Path : Z:\pestpcbsrv\HPCHEM1\ECD\_D\Data\PD111225\  
 Data File : PD091116.D  
 Signal(s) : Signal #1: ECD1A.ch Signal #2: ECD2B.ch  
 Acq On : 12 Nov 2025 17:01  
 Operator : AR\AJ  
 Sample : Q3600-01  
 Misc :  
 ALS Vial : 50 Sample Multiplier: 1

**Instrument :**  
 ECD\_D  
**ClientSampleId :**  
 CENTRAL-ROW-CONCRETE

Integration File signal 1: autoint1.e  
 Integration File signal 2: autoint2.e  
 Quant Time: Nov 12 21:28:12 2025  
 Quant Method : Z:\pestpcbsrv\HPCHEM1\ECD\_D\Method\PD101725.M  
 Quant Title : GC Extractables  
 QLast Update : Fri Oct 17 17:43:28 2025  
 Response via : Initial Calibration  
 Integrator: ChemStation

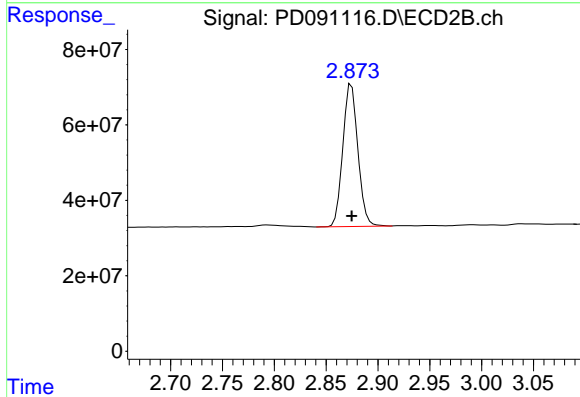
Volume Inj. : 1 µl  
 Signal #1 Phase : ZB-MR1 Signal #2 Phase: ZB-MR2  
 Signal #1 Info : 30M x 0.32mm x0.5 Signal #2 Info : 30M x 0.32mm x 0.25µm



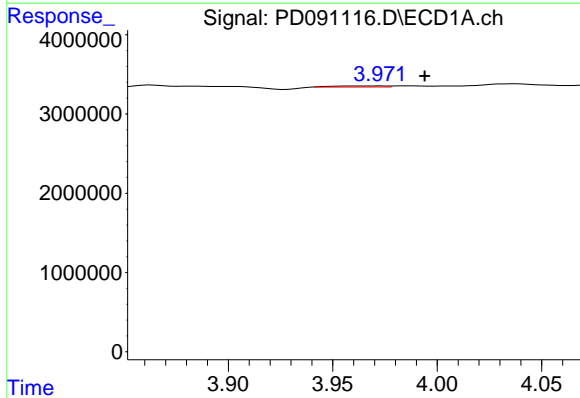


#1 Tetrachloro-m-xylene  
 R.T.: 3.544 min  
 Delta R.T.: 0.000 min  
 Response: 36762649  
 Conc: 11.80 ng/ml

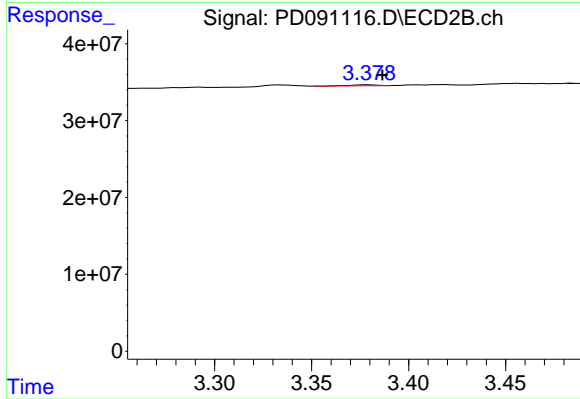
Instrument :  
 ECD\_D  
 ClientSampleId :  
 CENTRAL-ROW-CONCRETE



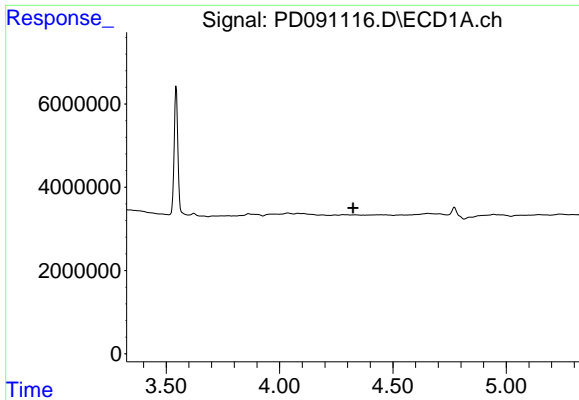
#1 Tetrachloro-m-xylene  
 R.T.: 2.874 min  
 Delta R.T.: 0.000 min  
 Response: 382085808  
 Conc: 12.83 ng/ml



#2 alpha-BHC  
 R.T.: 3.973 min  
 Delta R.T.: -0.021 min  
 Response: 225975  
 Conc: 0.03 ng/ml



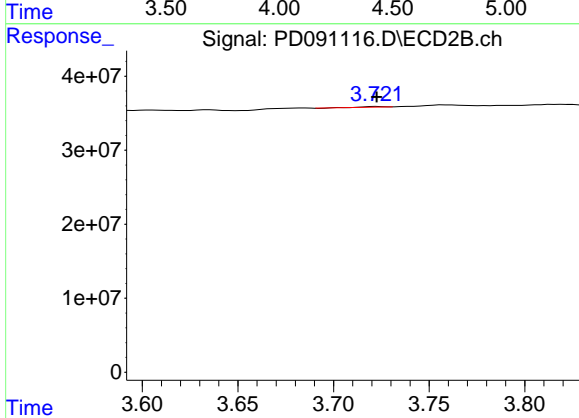
#2 alpha-BHC  
 R.T.: 3.379 min  
 Delta R.T.: -0.007 min  
 Response: 1171700  
 Conc: 0.02 ng/ml



#3 gamma-BHC (Lindane)

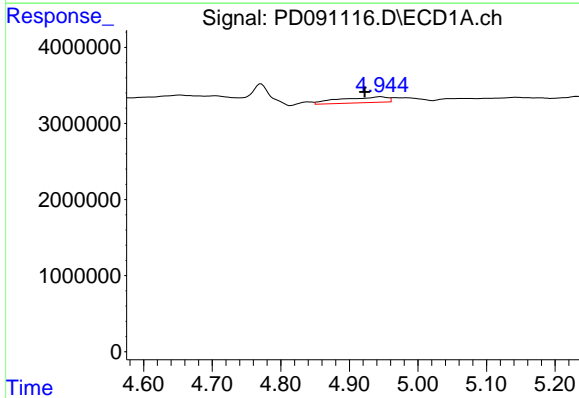
R.T.: 0.000 min  
 Exp R.T.: 4.325 min  
 Response: 0  
 Conc: N.D.

Instrument :  
 ECD\_D  
 ClientSampleId :  
 CENTRAL-ROW-CONCRETE



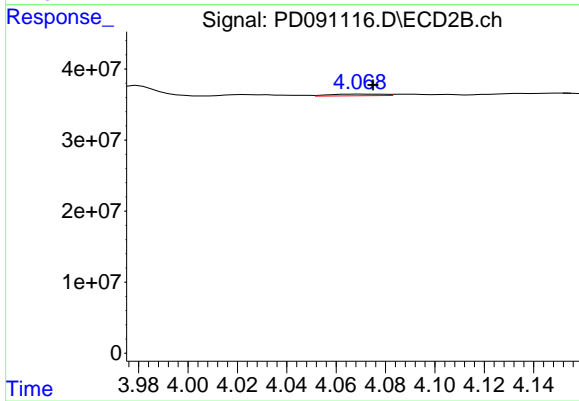
#3 gamma-BHC (Lindane)

R.T.: 3.723 min  
 Delta R.T.: 0.000 min  
 Response: 555394  
 Conc: 0.01 ng/ml



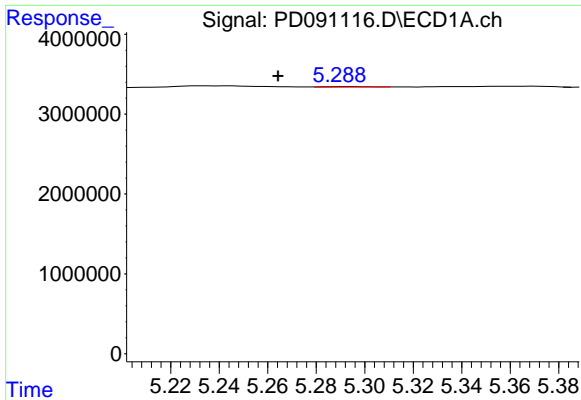
#4 Heptachlor

R.T.: 4.945 min  
 Delta R.T.: 0.023 min  
 Response: 3646590  
 Conc: 0.65 ng/ml



#4 Heptachlor

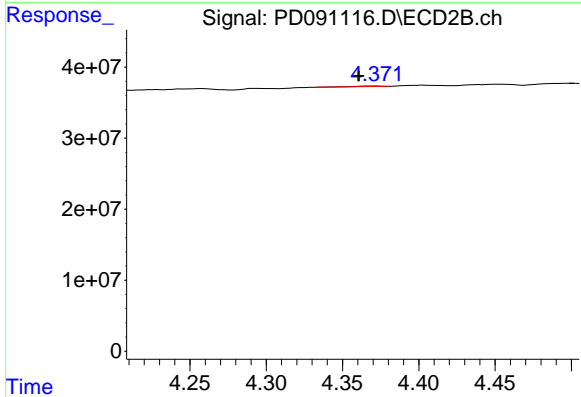
R.T.: 4.070 min  
 Delta R.T.: -0.005 min  
 Response: 3547030  
 Conc: 0.08 ng/ml



#5 Aldrin

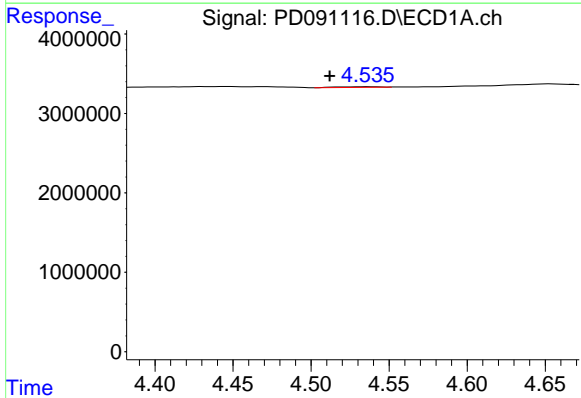
R.T.: 5.291 min  
 Delta R.T.: 0.027 min  
 Response: 113821  
 Conc: 0.02 ng/ml

Instrument :  
 ECD\_D  
 ClientSampleId :  
 CENTRAL-ROW-CONCRETE



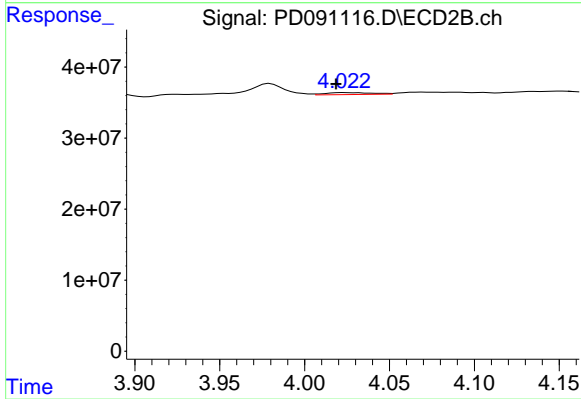
#5 Aldrin

R.T.: 4.372 min  
 Delta R.T.: 0.011 min  
 Response: 820911  
 Conc: 0.02 ng/ml



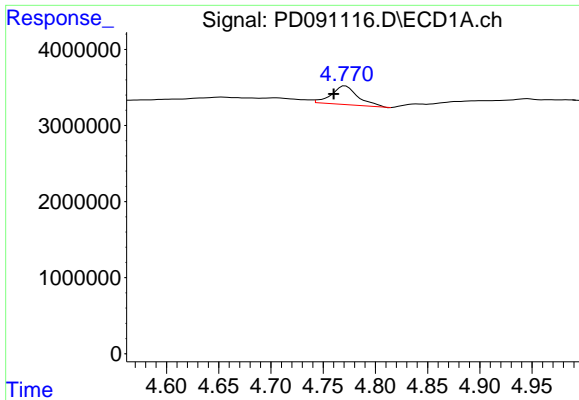
#6 beta-BHC

R.T.: 4.536 min  
 Delta R.T.: 0.024 min  
 Response: 145082  
 Conc: 0.06 ng/ml



#6 beta-BHC

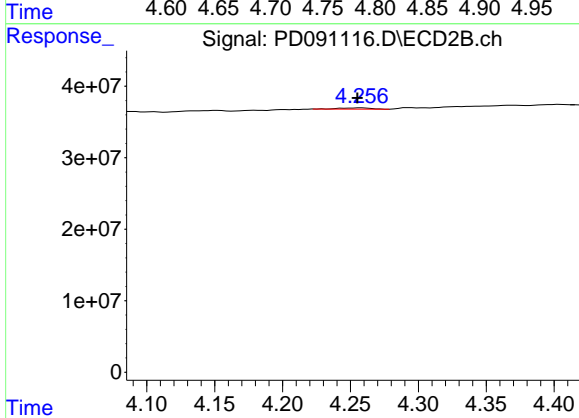
R.T.: 4.023 min  
 Delta R.T.: 0.004 min  
 Response: 5209085  
 Conc: 0.26 ng/ml



#7 delta-BHC

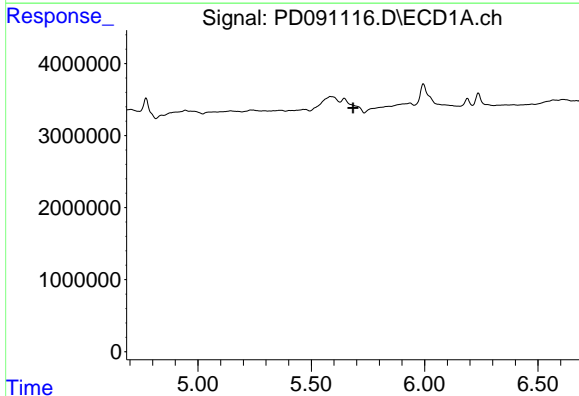
R.T.: 4.771 min  
 Delta R.T.: 0.011 min  
 Response: 4357595  
 Conc: 0.64 ng/ml

Instrument :  
 ECD\_D  
 ClientSampleId :  
 CENTRAL-ROW-CONCRETE



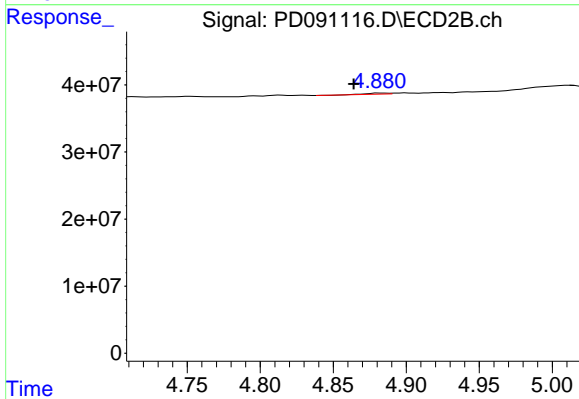
#7 delta-BHC

R.T.: 4.258 min  
 Delta R.T.: 0.003 min  
 Response: 2781516  
 Conc: 0.06 ng/ml



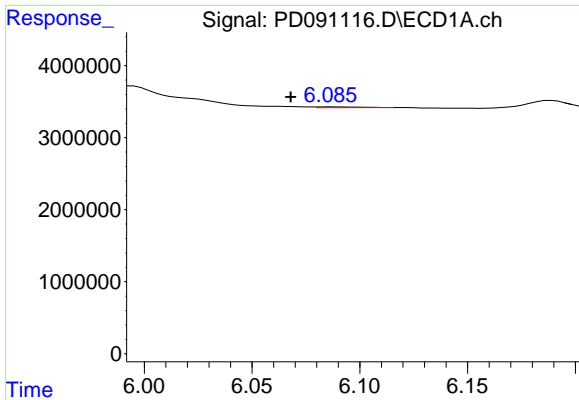
#8 Heptachlor epoxide

R.T.: 0.000 min  
 Exp R.T. : 5.684 min  
 Response: 0  
 Conc: N.D.



#8 Heptachlor epoxide

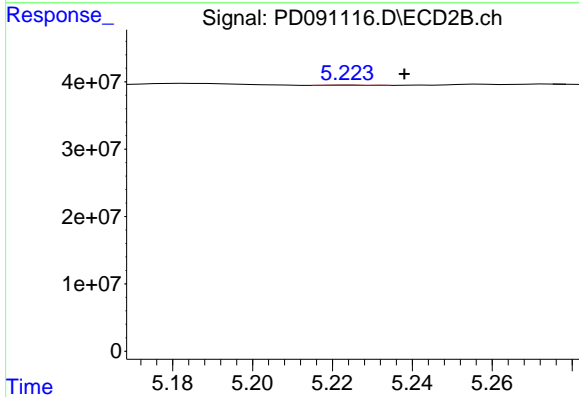
R.T.: 4.882 min  
 Delta R.T.: 0.018 min  
 Response: 1581762  
 Conc: 0.04 ng/ml



#9 Endosulfan I

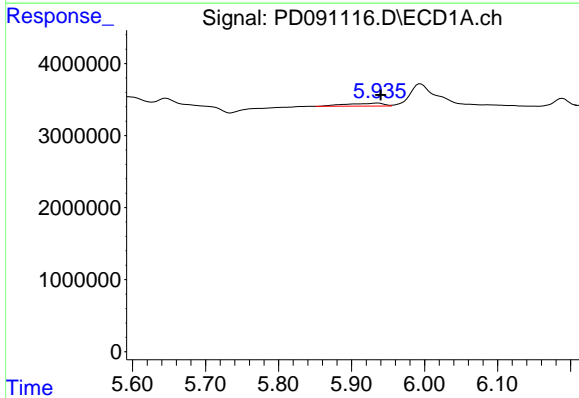
R.T.: 6.087 min  
 Delta R.T.: 0.019 min  
 Response: 161760  
 Conc: 0.03 ng/ml

Instrument :  
 ECD\_D  
 ClientSampleId :  
 CENTRAL-ROW-CONCRETE



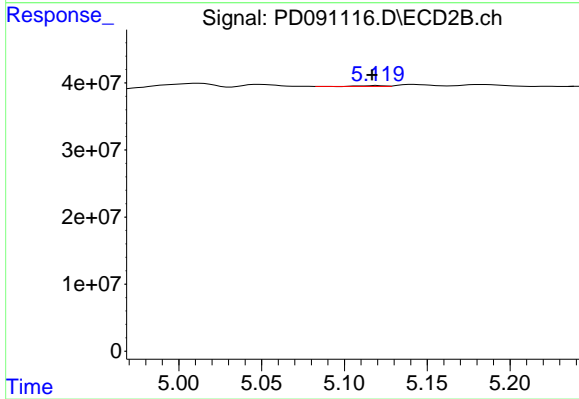
#9 Endosulfan I

R.T.: 5.224 min  
 Delta R.T.: -0.014 min  
 Response: 166747  
 Conc: 0.00 ng/ml



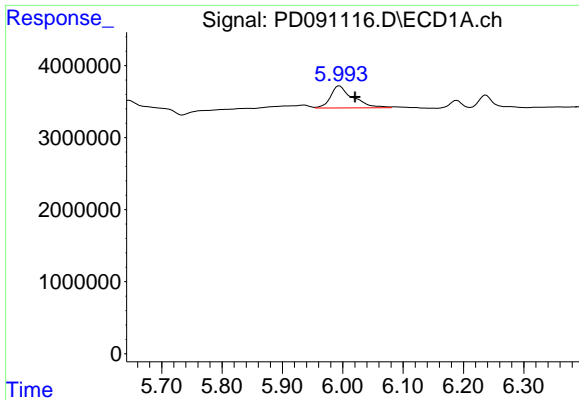
#10 gamma-Chlordane

R.T.: 5.936 min  
 Delta R.T.: -0.004 min  
 Response: 1502919  
 Conc: 0.25 ng/ml



#10 gamma-Chlordane

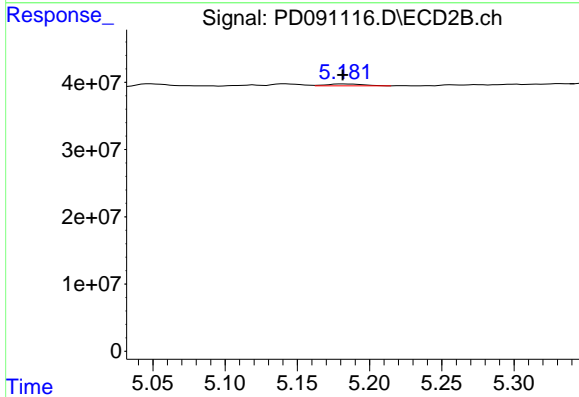
R.T.: 5.120 min  
 Delta R.T.: 0.003 min  
 Response: 1104246  
 Conc: 0.02 ng/ml



#11 alpha-Chlordane

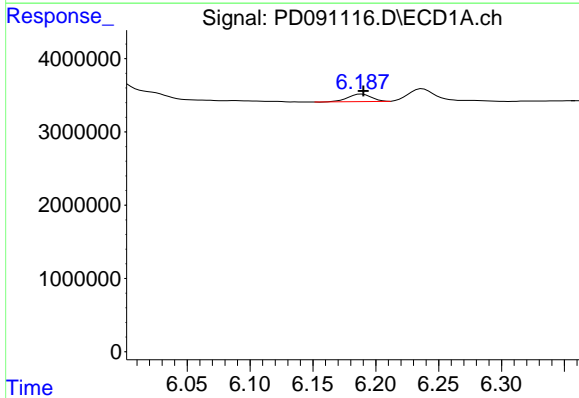
R.T.: 5.994 min  
 Delta R.T.: -0.026 min  
 Response: 7912664  
 Conc: 1.28 ng/ml

Instrument :  
 ECD\_D  
 ClientSampleId :  
 CENTRAL-ROW-CONCRETE



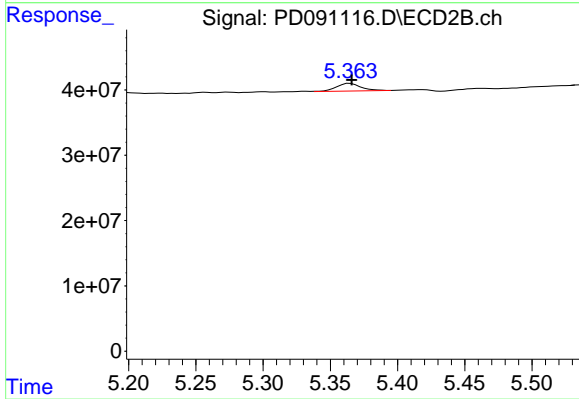
#11 alpha-Chlordane

R.T.: 5.183 min  
 Delta R.T.: 0.001 min  
 Response: 5070182  
 Conc: 0.12 ng/ml



#12 4,4'-DDE

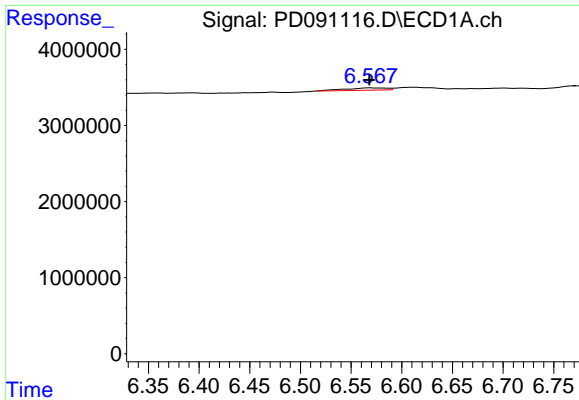
R.T.: 6.189 min  
 Delta R.T.: -0.001 min  
 Response: 1309516  
 Conc: 0.25 ng/ml



#12 4,4'-DDE

R.T.: 5.365 min  
 Delta R.T.: -0.001 min  
 Response: 14584267  
 Conc: 0.33 ng/ml

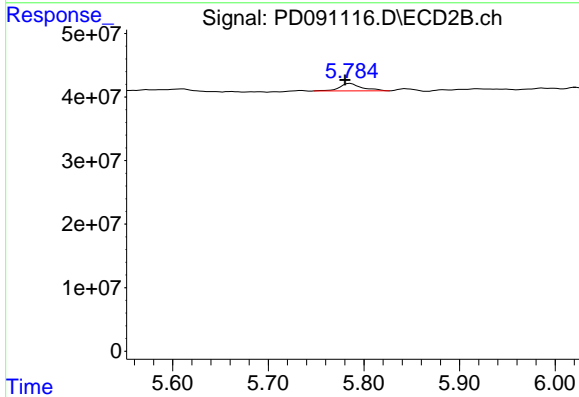




#14 Endrin

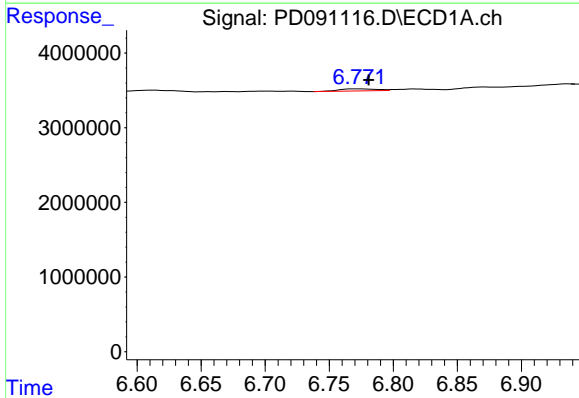
R.T.: 6.568 min  
 Delta R.T.: 0.000 min  
 Response: 905555  
 Conc: 0.18 ng/ml

Instrument :  
 ECD\_D  
 ClientSampleId :  
 CENTRAL-ROW-CONCRETE



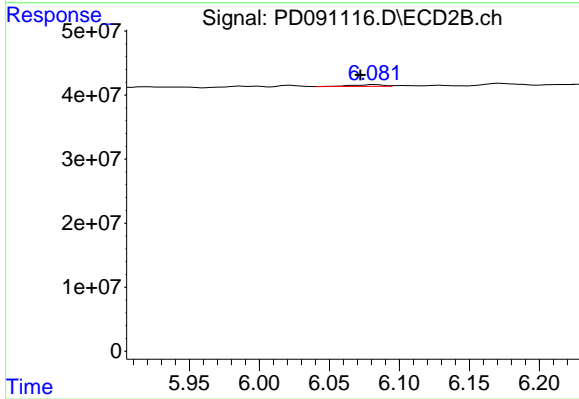
#14 Endrin

R.T.: 5.786 min  
 Delta R.T.: 0.005 min  
 Response: 19314149  
 Conc: 0.48 ng/ml



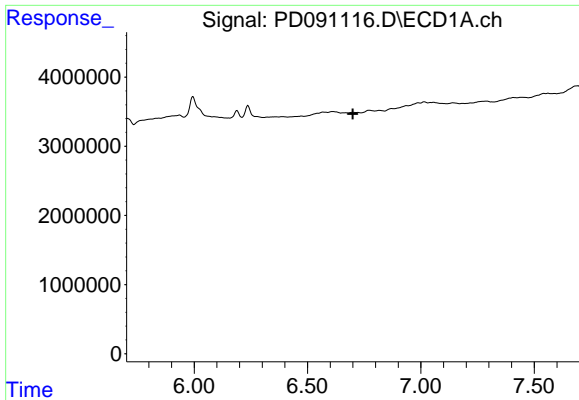
#15 Endosulfan II

R.T.: 6.773 min  
 Delta R.T.: -0.008 min  
 Response: 560694  
 Conc: 0.11 ng/ml



#15 Endosulfan II

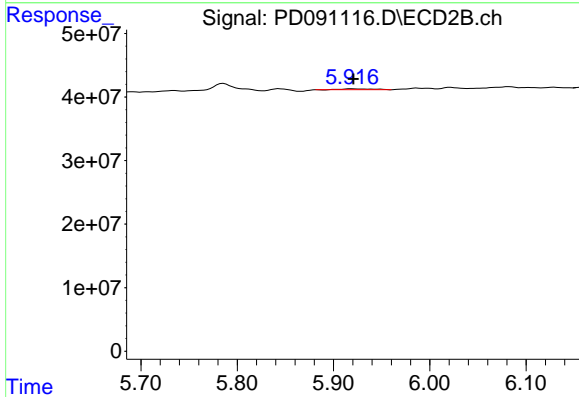
R.T.: 6.082 min  
 Delta R.T.: 0.010 min  
 Response: 4166878  
 Conc: 0.11 ng/ml



#16 4,4'-DDD

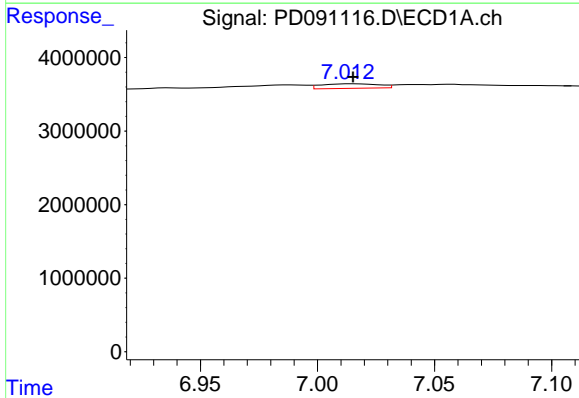
R.T.: 0.000 min  
 Exp R.T.: 6.700 min  
 Response: 0  
 Conc: N.D.

Instrument :  
 ECD\_D  
 ClientSampleId :  
 CENTRAL-ROW-CONCRETE



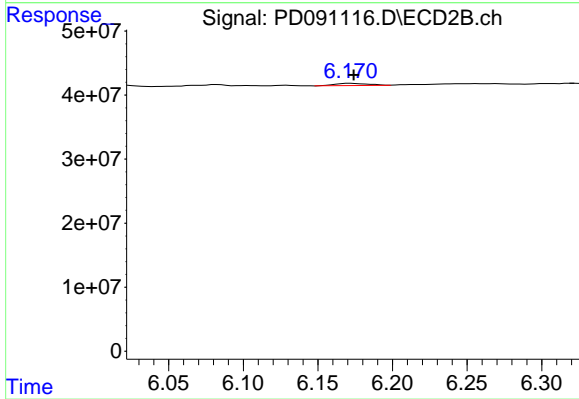
#16 4,4'-DDD

R.T.: 5.918 min  
 Delta R.T.: -0.003 min  
 Response: 3451091  
 Conc: 0.09 ng/ml



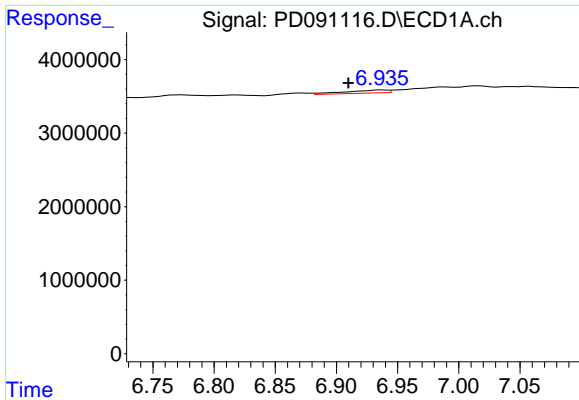
#17 4,4'-DDT

R.T.: 7.015 min  
 Delta R.T.: 0.000 min  
 Response: 1050553  
 Conc: 0.26 ng/ml



#17 4,4'-DDT

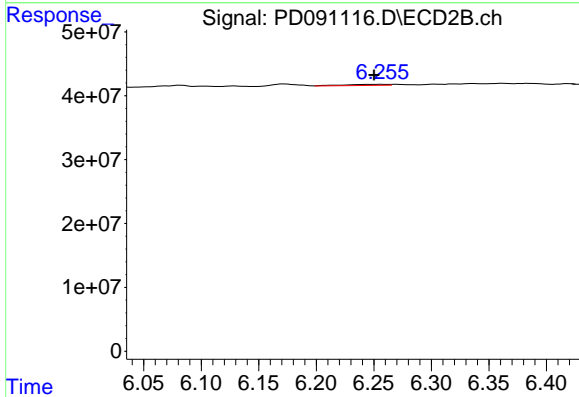
R.T.: 6.172 min  
 Delta R.T.: -0.002 min  
 Response: 5341047  
 Conc: 0.15 ng/ml



#18 Endrin aldehyde

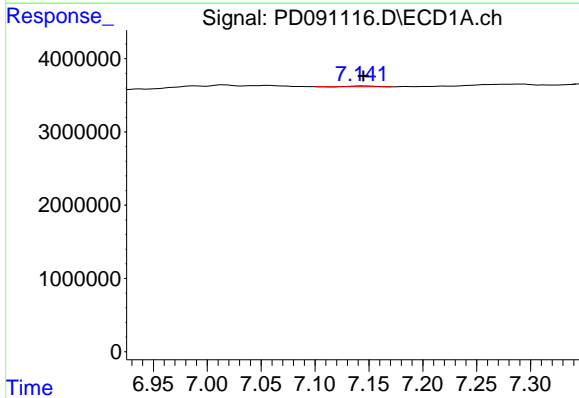
R.T.: 6.937 min  
 Delta R.T.: 0.027 min  
 Response: 980821  
 Conc: 0.27 ng/ml

Instrument :  
 ECD\_D  
 ClientSampleId :  
 CENTRAL-ROW-CONCRETE



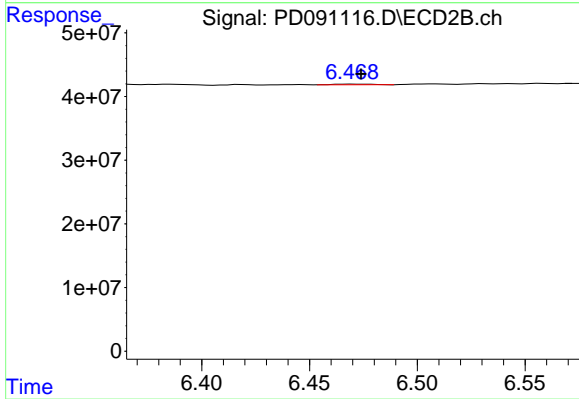
#18 Endrin aldehyde

R.T.: 6.257 min  
 Delta R.T.: 0.006 min  
 Response: 4288425  
 Conc: 0.15 ng/ml



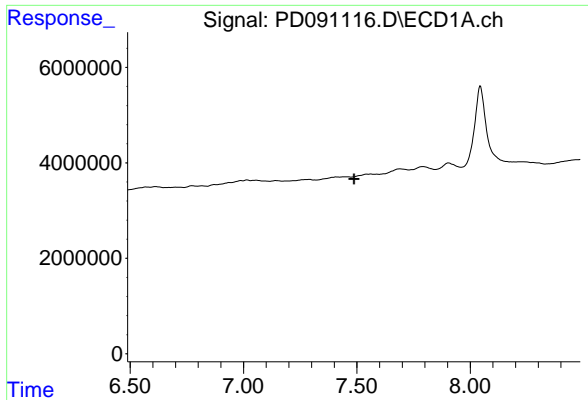
#19 Endosulfan Sulfate

R.T.: 7.142 min  
 Delta R.T.: -0.003 min  
 Response: 167383  
 Conc: 0.04 ng/ml



#19 Endosulfan Sulfate

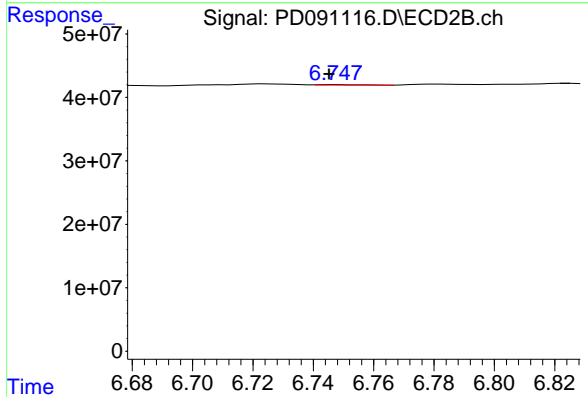
R.T.: 6.471 min  
 Delta R.T.: -0.003 min  
 Response: 1369515  
 Conc: 0.04 ng/ml



#20 Methoxychlor

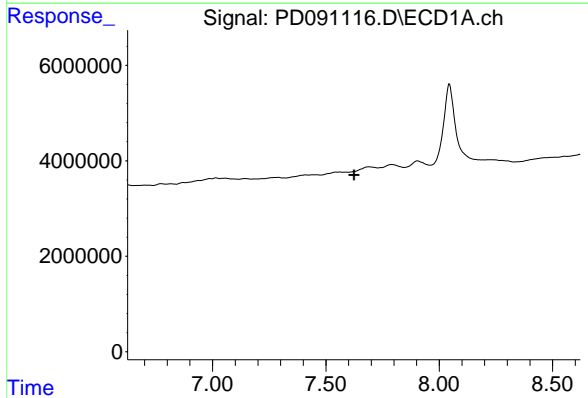
R.T.: 0.000 min  
 Exp R.T.: 7.488 min  
 Response: 0  
 Conc: N.D.

Instrument :  
 ECD\_D  
 ClientSampleId :  
 CENTRAL-ROW-CONCRETE



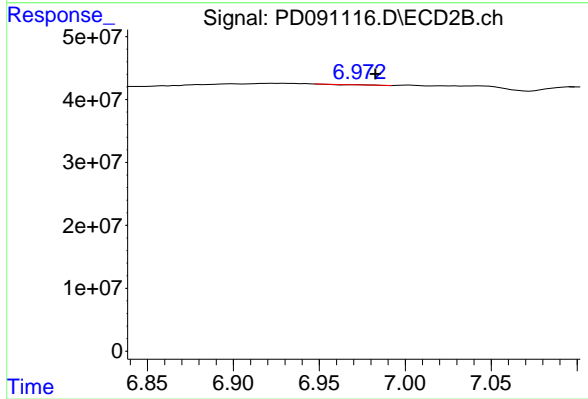
#20 Methoxychlor

R.T.: 6.748 min  
 Delta R.T.: 0.002 min  
 Response: 644190  
 Conc: 0.04 ng/ml



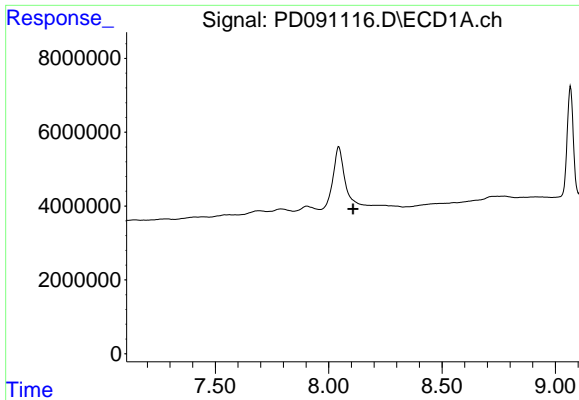
#21 Endrin ketone

R.T.: 0.000 min  
 Exp R.T.: 7.625 min  
 Response: 0  
 Conc: N.D.



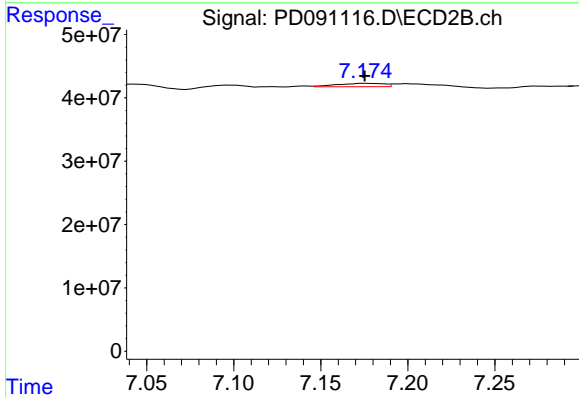
#21 Endrin ketone

R.T.: 6.972 min  
 Delta R.T.: -0.010 min  
 Response: 111752  
 Conc: 0.00 ng/ml

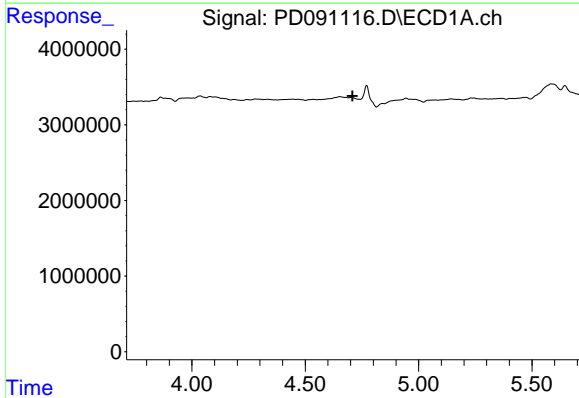


#22 Mirex  
 R.T.: 0.000 min  
 Exp R.T.: 8.107 min  
 Response: 0  
 Conc: N.D.

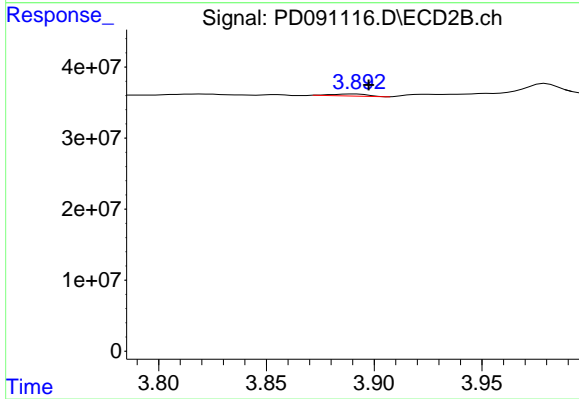
Instrument :  
 ECD\_D  
 ClientSampleId :  
 CENTRAL-ROW-CONCRETE



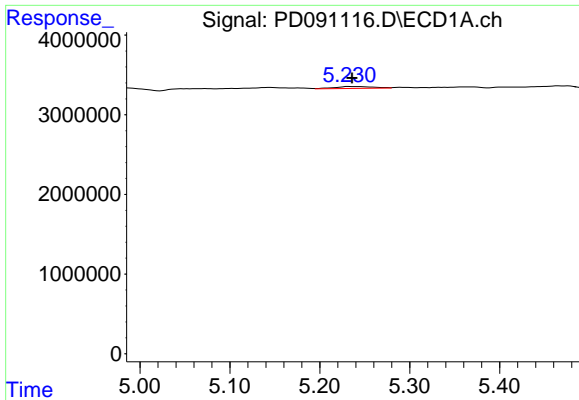
#22 Mirex  
 R.T.: 7.176 min  
 Delta R.T.: 0.000 min  
 Response: 10067127  
 Conc: 0.39 ng/ml



#23 Chlordane-1  
 R.T.: 0.000 min  
 Exp R.T.: 4.709 min  
 Response: 0  
 Conc: N.D.



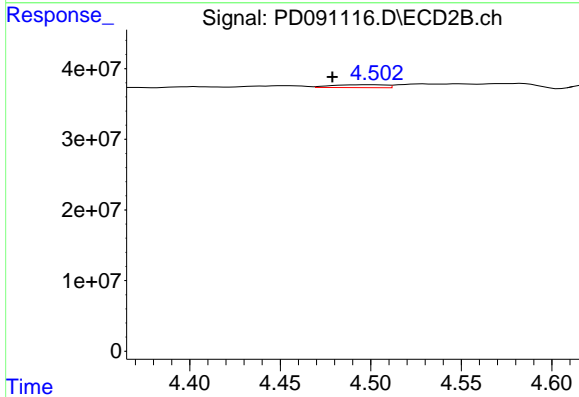
#23 Chlordane-1  
 R.T.: 3.891 min  
 Delta R.T.: -0.007 min  
 Response: 3435170  
 Conc: 2.76 ng/ml



#24 Chlordane-2

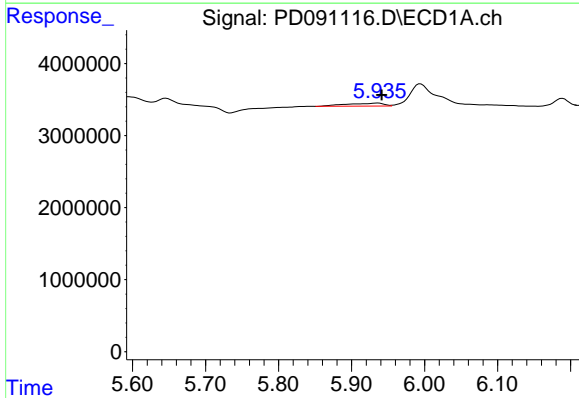
R.T.: 5.232 min  
 Delta R.T.: -0.003 min  
 Response: 713228  
 Conc: 3.69 ng/ml

Instrument :  
 ECD\_D  
 ClientSampleId :  
 CENTRAL-ROW-CONCRETE



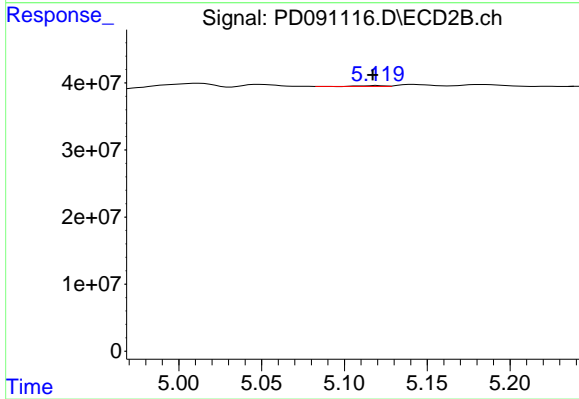
#24 Chlordane-2

R.T.: 4.502 min  
 Delta R.T.: 0.024 min  
 Response: 8606964  
 Conc: 6.60 ng/ml



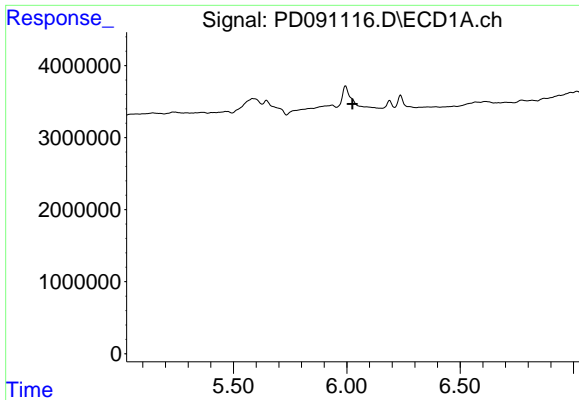
#25 Chlordane-3

R.T.: 5.936 min  
 Delta R.T.: -0.005 min  
 Response: 1502919  
 Conc: 1.97 ng/ml



#25 Chlordane-3

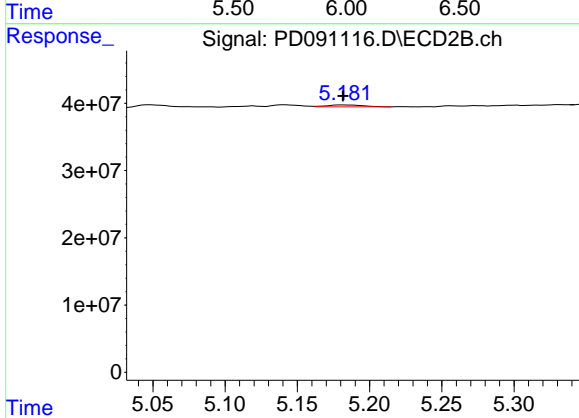
R.T.: 5.120 min  
 Delta R.T.: 0.003 min  
 Response: 1104246  
 Conc: 0.28 ng/ml



#26 Chlordane-4

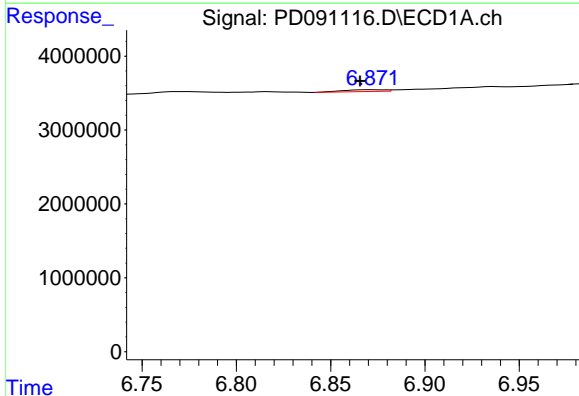
R.T.: 0.000 min  
 Exp R.T.: 6.025 min  
 Response: 0  
 Conc: N.D.

Instrument : ECD\_D  
 ClientSampleId : CENTRAL-ROW-CONCRETE



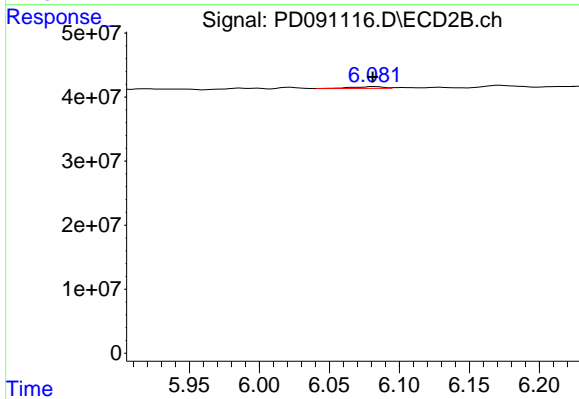
#26 Chlordane-4

R.T.: 5.183 min  
 Delta R.T.: 0.001 min  
 Response: 5070182  
 Conc: 1.52 ng/ml



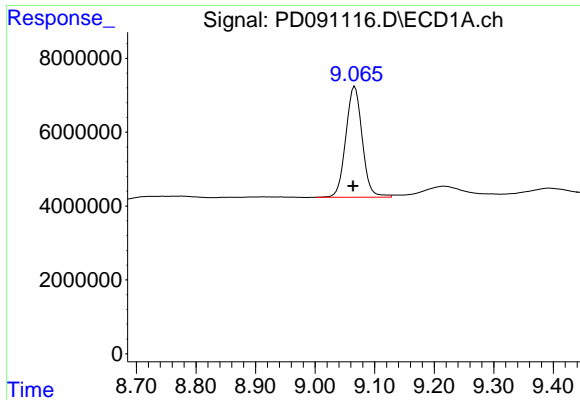
#27 Chlordane-5

R.T.: 6.872 min  
 Delta R.T.: 0.006 min  
 Response: 377076  
 Conc: 2.51 ng/ml



#27 Chlordane-5

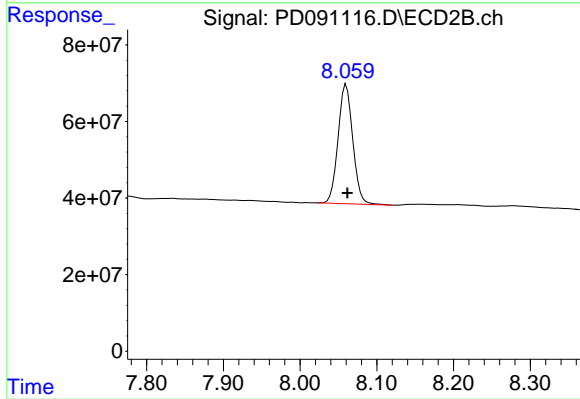
R.T.: 6.082 min  
 Delta R.T.: 0.001 min  
 Response: 4166878  
 Conc: 2.82 ng/ml



#28 Decachlorobiphenyl

R.T.: 9.067 min  
Delta R.T.: 0.002 min  
Response: 57385852  
Conc: 12.27 ng/ml

Instrument :  
ECD\_D  
ClientSampleId :  
CENTRAL-ROW-CONCRETE



#28 Decachlorobiphenyl

R.T.: 8.060 min  
Delta R.T.: -0.002 min  
Response: 414491591  
Conc: 13.68 ng/ml