

Data Path : Z:\pestpcbsrv\HPCHEM1\ECD_D\Data\PD111225\
 Data File : PD091117.D
 Signal(s) : Signal #1: ECD1A.ch Signal #2: ECD2B.ch
 Acq On : 12 Nov 2025 17:15
 Operator : AR\AJ
 Sample : I.BLK
 Misc :
 ALS Vial : 2 Sample Multiplier: 1

Instrument :
 ECD_D
 ClientSampleId :
 I.BLK

Integration File signal 1: autoint1.e
 Integration File signal 2: autoint2.e
 Quant Time: Nov 12 21:28:37 2025
 Quant Method : Z:\pestpcbsrv\HPCHEM1\ECD_D\Method\PD101725.M
 Quant Title : GC Extractables
 QLast Update : Fri Oct 17 17:43:28 2025
 Response via : Initial Calibration
 Integrator: ChemStation

Volume Inj. : 1 µl
 Signal #1 Phase : ZB-MR2 Signal #2 Phase: ZB-MR2
 Signal #1 Info : 30M x 0.32mm x0.5 Signal #2 Info : 30M x 0.32mm x 0.25µm

	Compound	RT#1	RT#2	Resp#1	Resp#2	ng/ml	ng/ml

System Monitoring Compounds							
1)	SA Tetrachlo...	3.544	2.874	66894890	723.1E6	21.481	24.282
28)	SA Decachlor...	9.067	8.060	101.4E6	783.3E6	21.672	25.859
Target Compounds							
2)	A alpha-BHC	0.000	3.376	0	4204771	N.D.	0.082 #
3)	MA gamma-BHC...	4.334	3.723	128445	838106	0.019	0.018
4)	MA Heptachlor	4.913	4.069	4046978	867687	0.724	0.019 #
5)	MB Aldrin	0.000	4.374	0	1028285	N.D.	0.022 #
6)	B beta-BHC	0.000	4.021	0	2740136	N.D.	0.138 #
7)	B delta-BHC	4.772	4.261	9051395	1310515	1.339	0.027 #
8)	Heptachlo...	5.677	4.859	1565307	1072431	0.270	0.025 #
9)	A Endosulfan I	6.052f	5.217f	97115	2022517	0.018	0.051 #
10)	B gamma-Chl...	0.000	5.116	0	1046953	N.D.	0.023 #
11)	B alpha-Chl...	5.991f	5.189	3031155	1048465	0.490	0.024 #
12)	B 4,4'-DDE	0.000	5.392f	0	4656398	N.D.	0.106 #
13)	MA Dieldrin	0.000	5.498	0	1254208	N.D.	0.028 #
14)	MA Endrin	0.000	5.786	0	76313076	N.D.	1.885 #
15)	B Endosulfa...	0.000	6.073	0	1282320	N.D.	0.034 #
16)	A 4,4'-DDD	6.702	5.913	904285	-397250	0.223	N.D. #
17)	MA 4,4'-DDT	6.987f	6.185	4194621	1718375	1.020	0.049 #
18)	B Endrin al...	0.000	6.251	0	3634138	N.D.	0.131 #
19)	B Endosulfa...	0.000	6.480	0	901236	N.D.	0.025 #
20)	A Methoxychlor	7.463f	6.743	36646	2164130	0.017	0.124 #
21)	B Endrin ke...	0.000	6.999f	0	1005460	N.D.	0.027 #
22)	Mirex	8.108	7.174	2081417	22428076	0.650	0.873 #
23)	Chlordane-1	0.000	3.898	0	743284	N.D.	0.596 #
24)	Chlordane-2	0.000	4.494	0	4535633	N.D.	3.477 #
25)	Chlordane-3	0.000	5.116	0	1046953	N.D.	0.269 #
26)	Chlordane-4	6.052f	5.189	97115	1048465	0.100	0.314 #
27)	Chlordane-5	0.000	6.073	0	1282320	N.D.	0.869 #

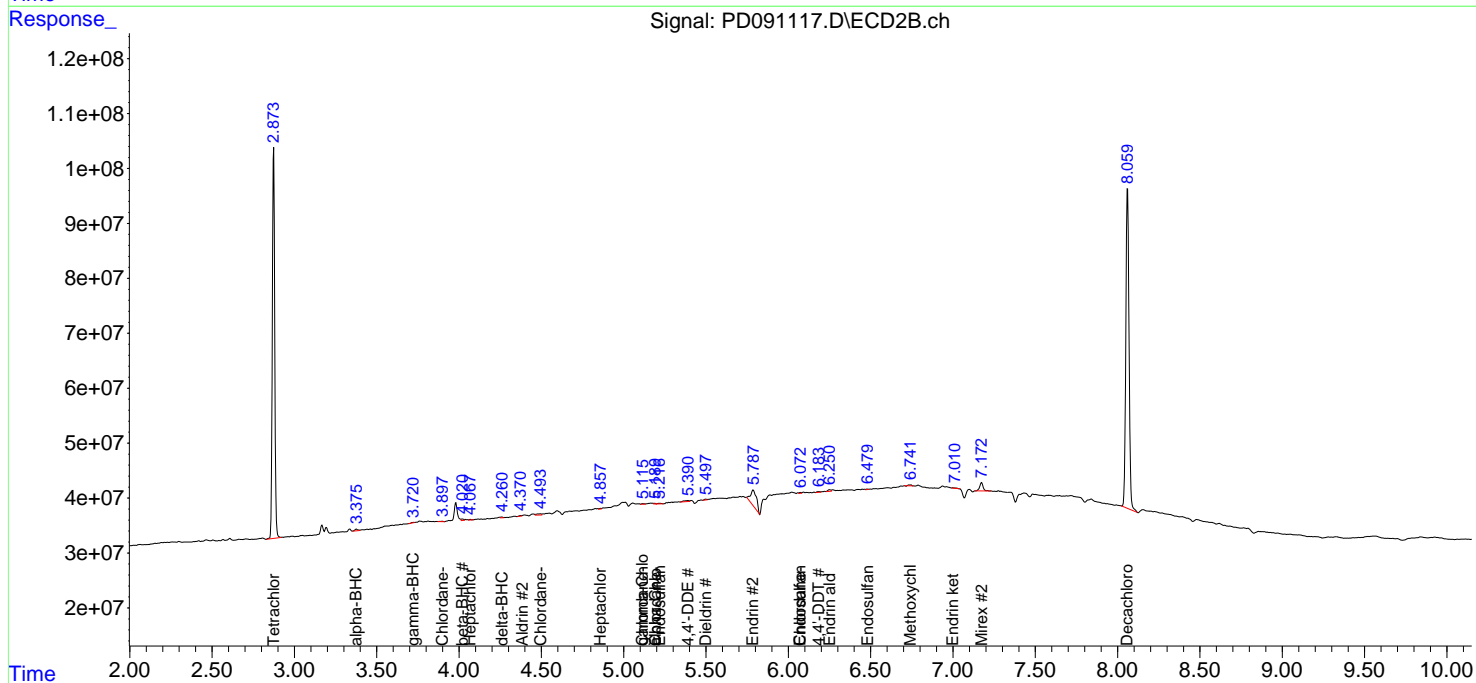
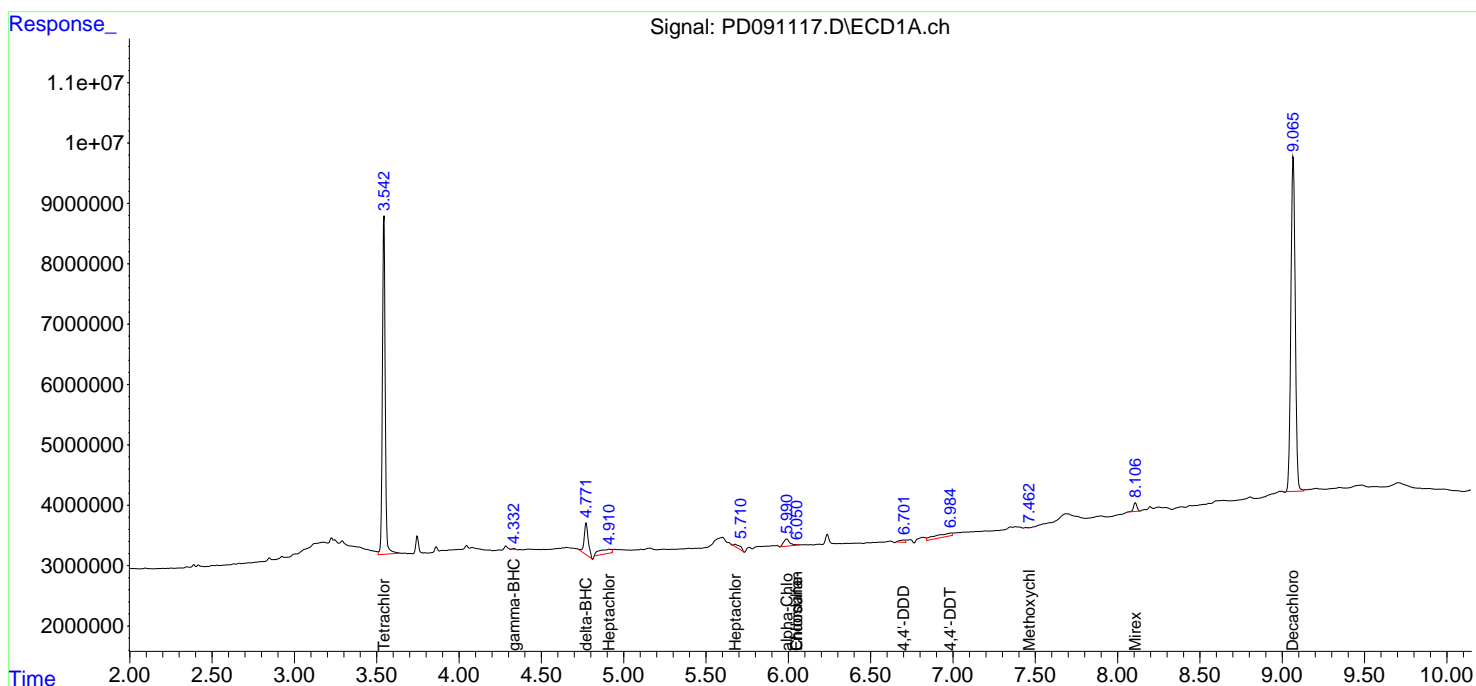
(f)=RT Delta > 1/2 Window (#)=Amounts differ by > 25% (m)=manual int.

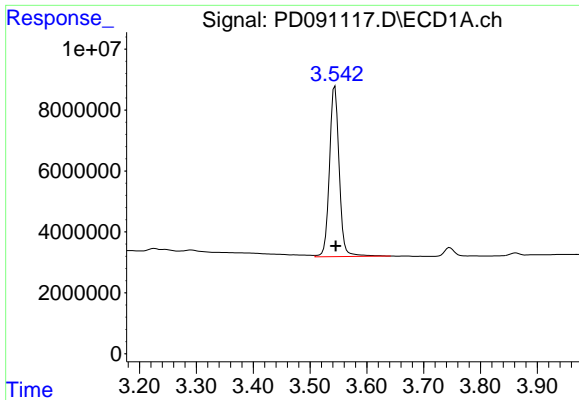
Data Path : Z:\pestpcbsrv\HPCHEM1\ECD_D\Data\PD111225\
 Data File : PD091117.D
 Signal(s) : Signal #1: ECD1A.ch Signal #2: ECD2B.ch
 Acq On : 12 Nov 2025 17:15
 Operator : AR\AJ
 Sample : I.BLK
 Misc :
 ALS Vial : 2 Sample Multiplier: 1

Instrument :
 ECD_D
 ClientSampleId :
 I.BLK

Integration File signal 1: autoint1.e
 Integration File signal 2: autoint2.e
 Quant Time: Nov 12 21:28:37 2025
 Quant Method : Z:\pestpcbsrv\HPCHEM1\ECD_D\Method\PD101725.M
 Quant Title : GC Extractables
 QLast Update : Fri Oct 17 17:43:28 2025
 Response via : Initial Calibration
 Integrator: ChemStation

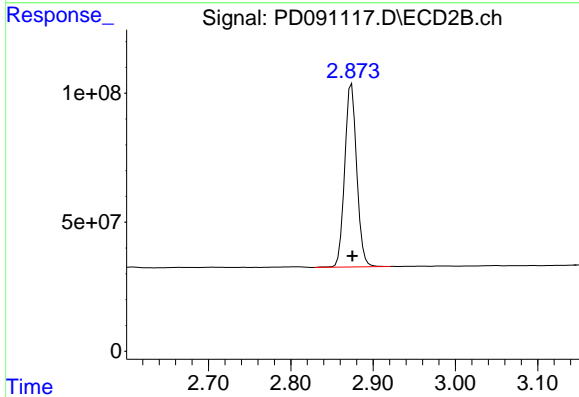
Volume Inj. : 1 µl
 Signal #1 Phase : ZB-MR1 Signal #2 Phase: ZB-MR2
 Signal #1 Info : 30M x 0.32mm x0.5 Signal #2 Info : 30M x 0.32mm x 0.25µm



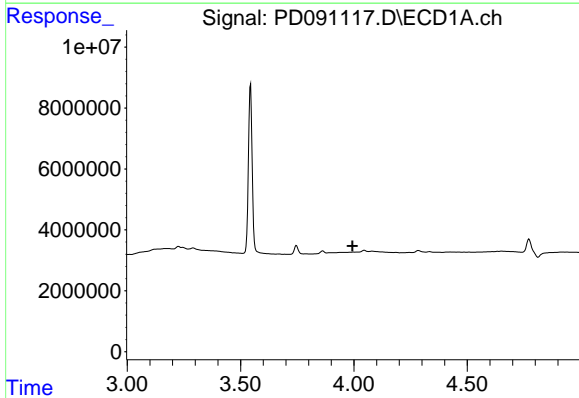


#1 Tetrachloro-m-xylene
 R.T.: 3.544 min
 Delta R.T.: -0.001 min
 Response: 66894890
 Conc: 21.48 ng/ml

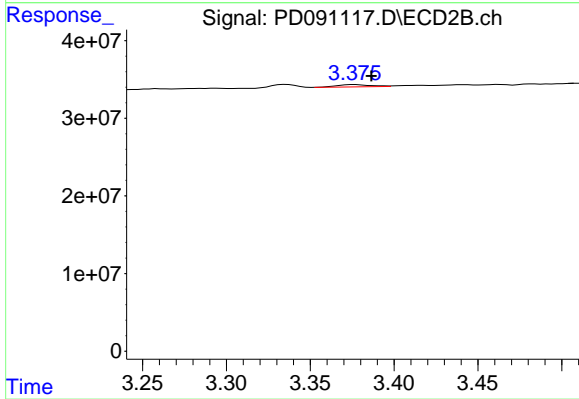
Instrument :
 ECD_D
 ClientSampleId :
 I.BLK



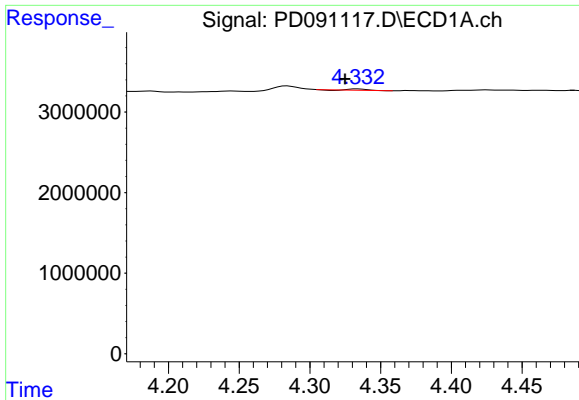
#1 Tetrachloro-m-xylene
 R.T.: 2.874 min
 Delta R.T.: 0.000 min
 Response: 723053856
 Conc: 24.28 ng/ml



#2 alpha-BHC
 R.T.: 0.000 min
 Exp R.T. : 3.994 min
 Response: 0
 Conc: N.D.

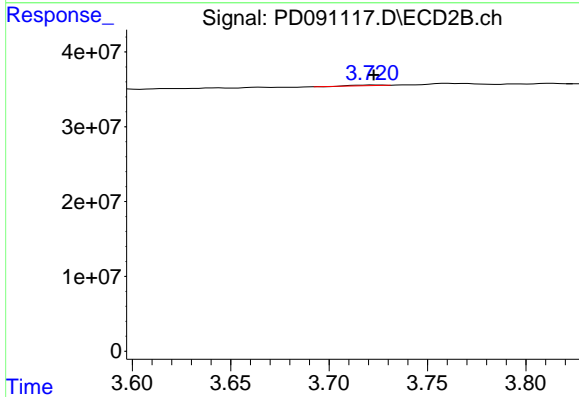


#2 alpha-BHC
 R.T.: 3.376 min
 Delta R.T.: -0.010 min
 Response: 4204771
 Conc: 0.08 ng/ml

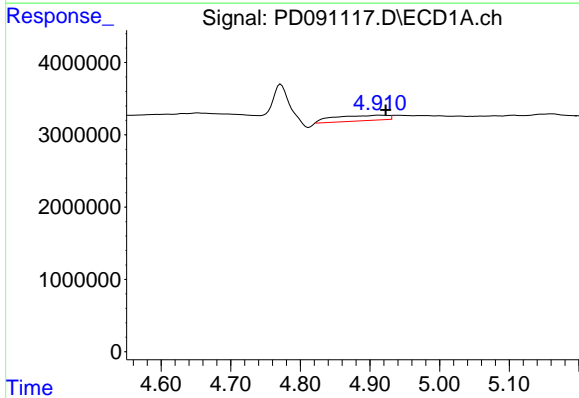


#3 gamma-BHC (Lindane)
 R.T.: 4.334 min
 Delta R.T.: 0.009 min
 Response: 128445
 Conc: 0.02 ng/ml

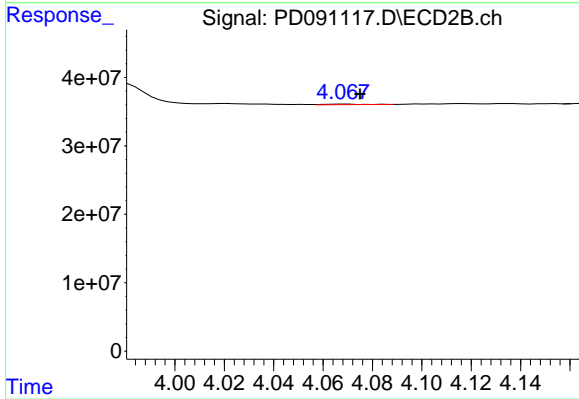
Instrument :
 ECD_D
 ClientSampleId :
 I.BLK



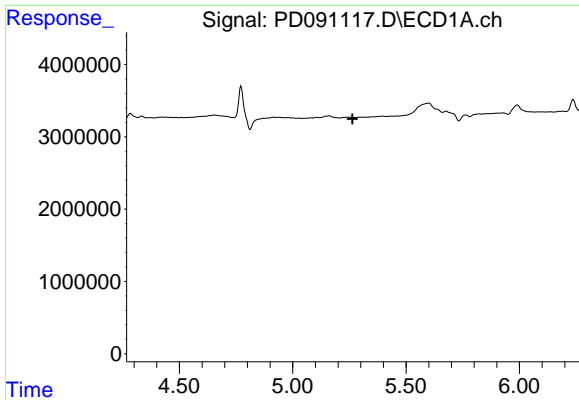
#3 gamma-BHC (Lindane)
 R.T.: 3.723 min
 Delta R.T.: 0.000 min
 Response: 838106
 Conc: 0.02 ng/ml



#4 Heptachlor
 R.T.: 4.913 min
 Delta R.T.: -0.010 min
 Response: 4046978
 Conc: 0.72 ng/ml

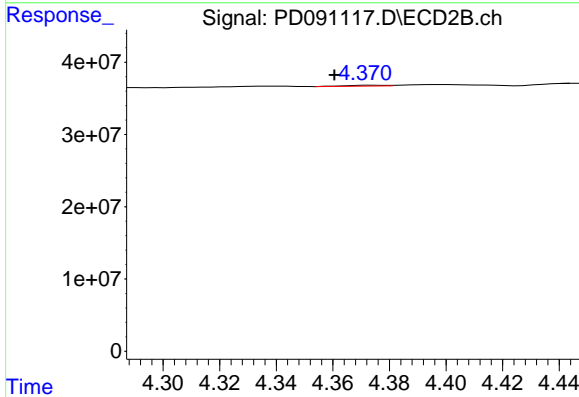


#4 Heptachlor
 R.T.: 4.069 min
 Delta R.T.: -0.006 min
 Response: 867687
 Conc: 0.02 ng/ml

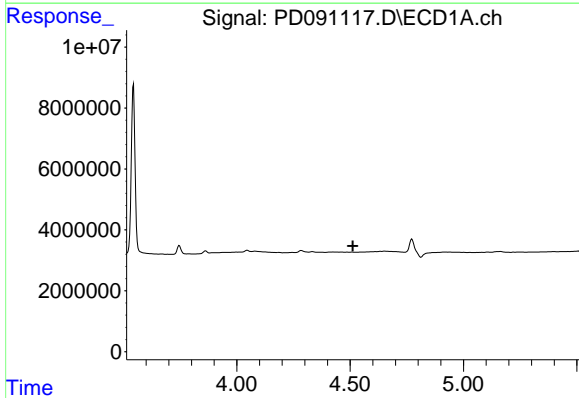


#5 Aldrin
 R.T.: 0.000 min
 Exp R.T.: 5.264 min
 Response: 0
 Conc: N.D.

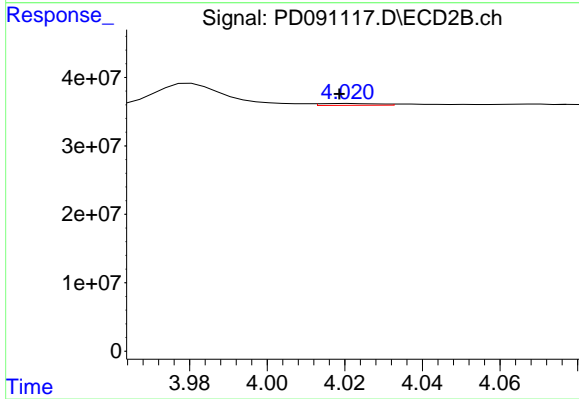
Instrument :
 ECD_D
 ClientSampleId :
 I.BLK



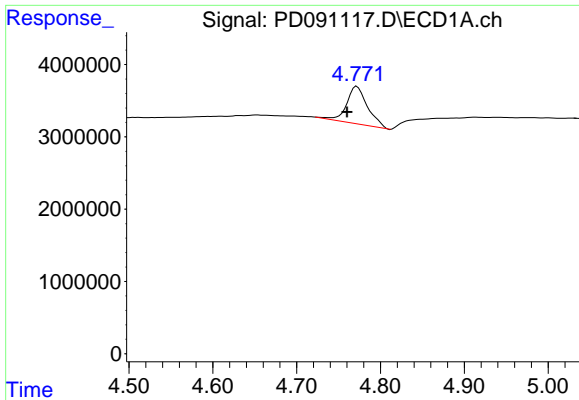
#5 Aldrin
 R.T.: 4.374 min
 Delta R.T.: 0.014 min
 Response: 1028285
 Conc: 0.02 ng/ml



#6 beta-BHC
 R.T.: 0.000 min
 Exp R.T.: 4.512 min
 Response: 0
 Conc: N.D.



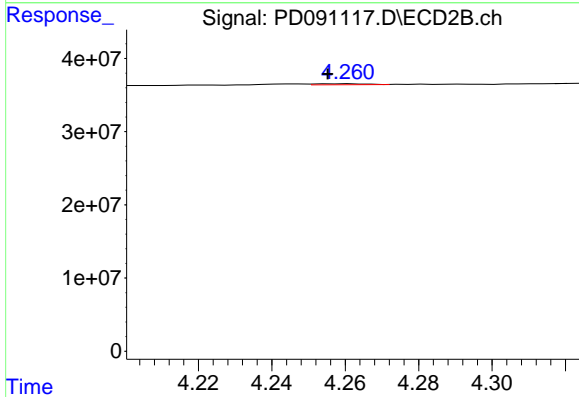
#6 beta-BHC
 R.T.: 4.021 min
 Delta R.T.: 0.003 min
 Response: 2740136
 Conc: 0.14 ng/ml



#7 delta-BHC

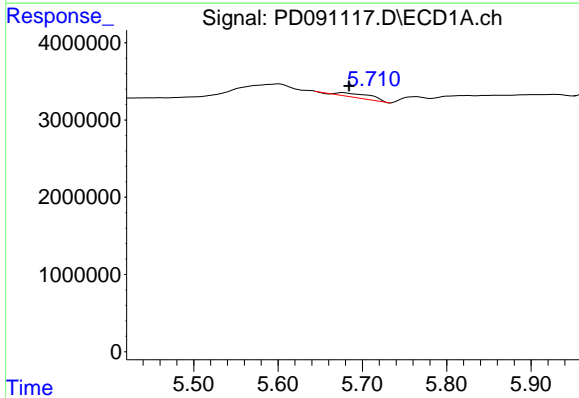
R.T.: 4.772 min
 Delta R.T.: 0.012 min
 Response: 9051395
 Conc: 1.34 ng/ml

Instrument :
 ECD_D
 ClientSampleId :
 I.BLK



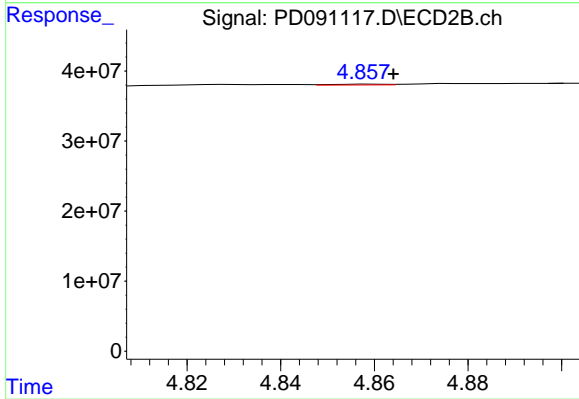
#7 delta-BHC

R.T.: 4.261 min
 Delta R.T.: 0.006 min
 Response: 1310515
 Conc: 0.03 ng/ml



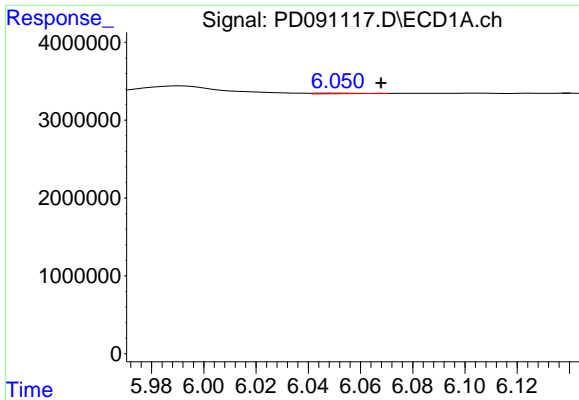
#8 Heptachlor epoxide

R.T.: 5.677 min
 Delta R.T.: -0.007 min
 Response: 1565307
 Conc: 0.27 ng/ml



#8 Heptachlor epoxide

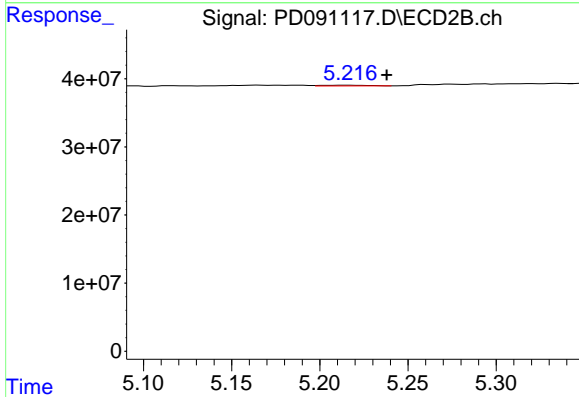
R.T.: 4.859 min
 Delta R.T.: -0.005 min
 Response: 1072431
 Conc: 0.03 ng/ml



#9 Endosulfan I

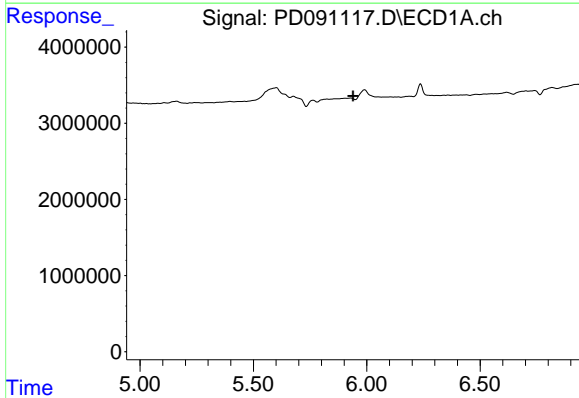
R.T.: 6.052 min
 Delta R.T.: -0.016 min
 Response: 97115
 Conc: 0.02 ng/ml

Instrument :
 ECD_D
 ClientSampleId :
 I.BLK



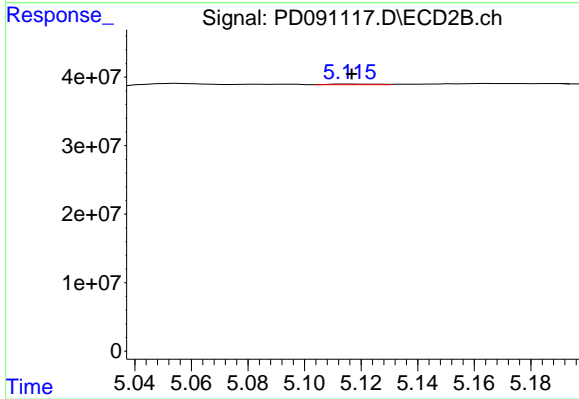
#9 Endosulfan I

R.T.: 5.217 min
 Delta R.T.: -0.021 min
 Response: 2022517
 Conc: 0.05 ng/ml



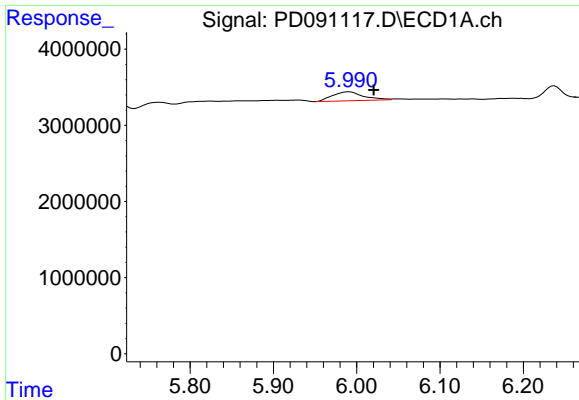
#10 gamma-Chlordane

R.T.: 0.000 min
 Exp R.T. : 5.940 min
 Response: 0
 Conc: N.D.



#10 gamma-Chlordane

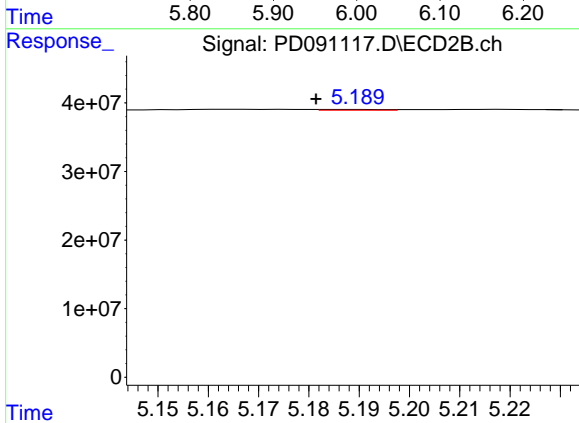
R.T.: 5.116 min
 Delta R.T.: 0.000 min
 Response: 1046953
 Conc: 0.02 ng/ml



#11 alpha-Chlordane

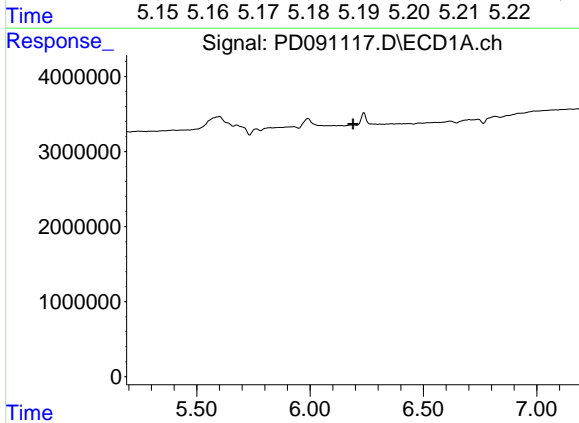
R.T.: 5.991 min
 Delta R.T.: -0.030 min
 Response: 3031155
 Conc: 0.49 ng/ml

Instrument :
 ECD_D
 ClientSampleId :
 I.BLK



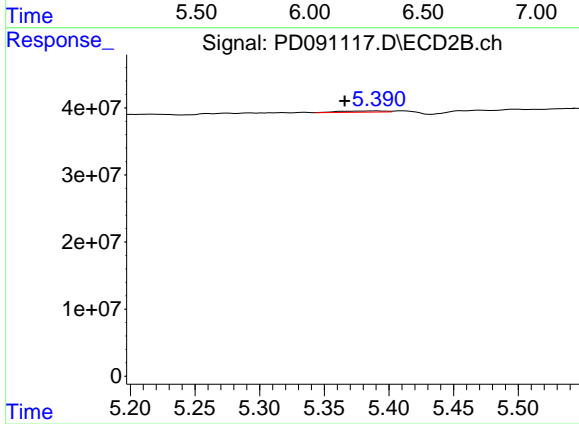
#11 alpha-Chlordane

R.T.: 5.189 min
 Delta R.T.: 0.007 min
 Response: 1048465
 Conc: 0.02 ng/ml



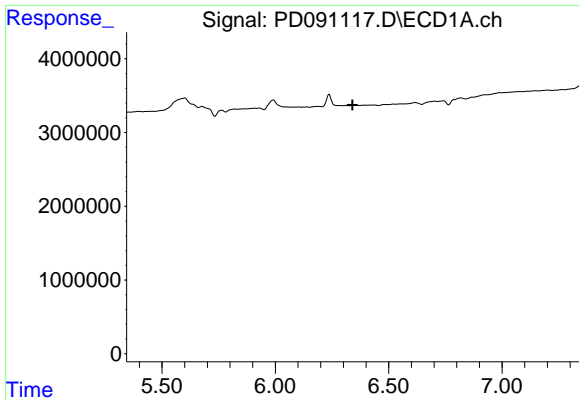
#12 4,4'-DDE

R.T.: 0.000 min
 Exp R.T. : 6.190 min
 Response: 0
 Conc: N.D.



#12 4,4'-DDE

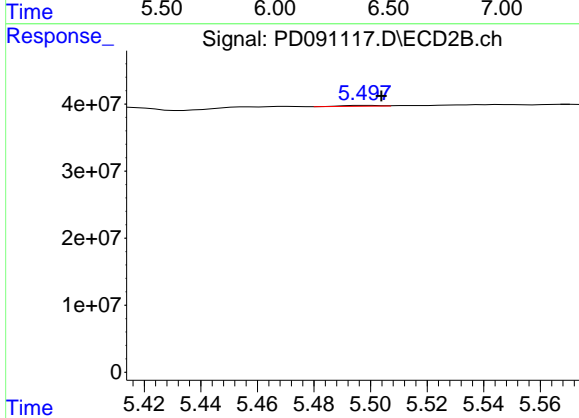
R.T.: 5.392 min
 Delta R.T.: 0.026 min
 Response: 4656398
 Conc: 0.11 ng/ml



#13 Dieldrin

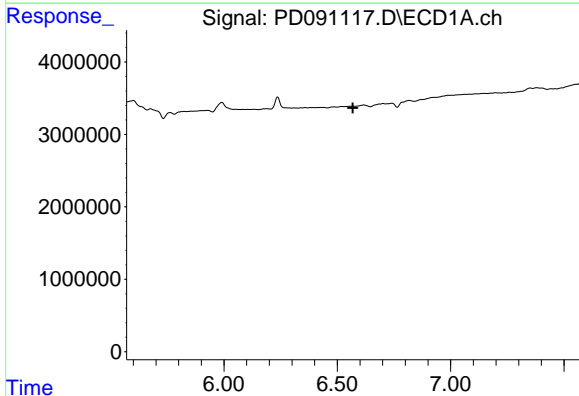
R.T.: 0.000 min
 Exp R.T.: 6.340 min
 Response: 0
 Conc: N.D.

Instrument : ECD_D
 ClientSampleId : I.BLK



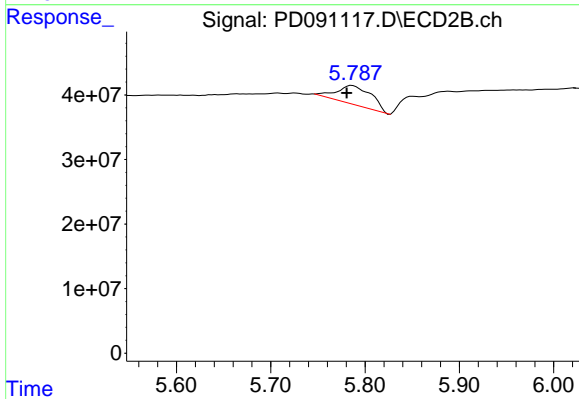
#13 Dieldrin

R.T.: 5.498 min
 Delta R.T.: -0.005 min
 Response: 1254208
 Conc: 0.03 ng/ml



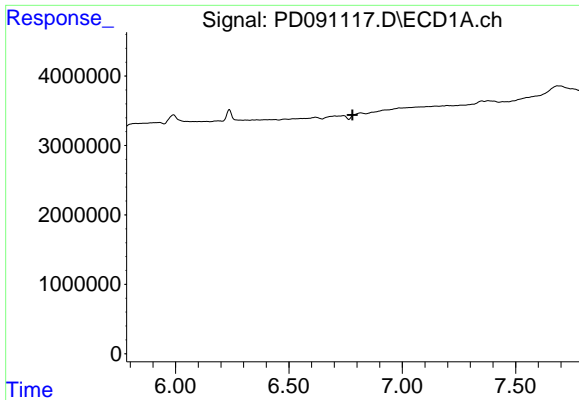
#14 Endrin

R.T.: 0.000 min
 Exp R.T.: 6.568 min
 Response: 0
 Conc: N.D.



#14 Endrin

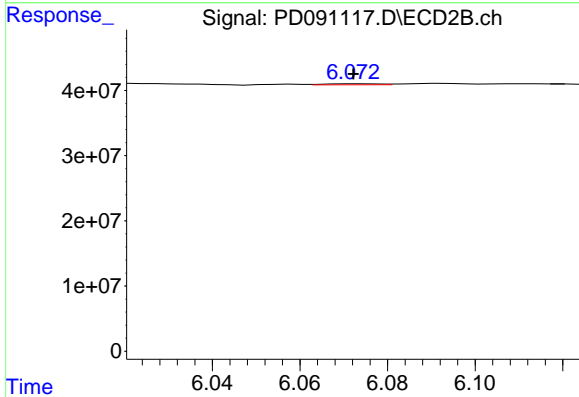
R.T.: 5.786 min
 Delta R.T.: 0.006 min
 Response: 76313076
 Conc: 1.88 ng/ml



#15 Endosulfan II

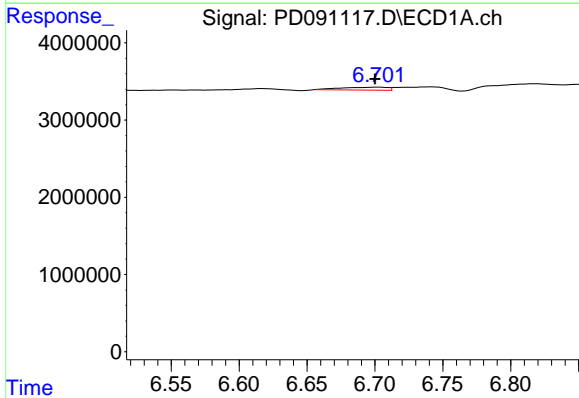
R.T.: 0.000 min
 Exp R.T.: 6.781 min
 Response: 0
 Conc: N.D.

Instrument :
 ECD_D
 ClientSampleId :
 I.BLK



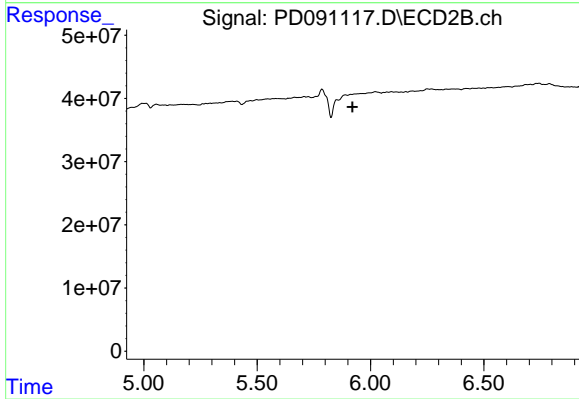
#15 Endosulfan II

R.T.: 6.073 min
 Delta R.T.: 0.000 min
 Response: 1282320
 Conc: 0.03 ng/ml



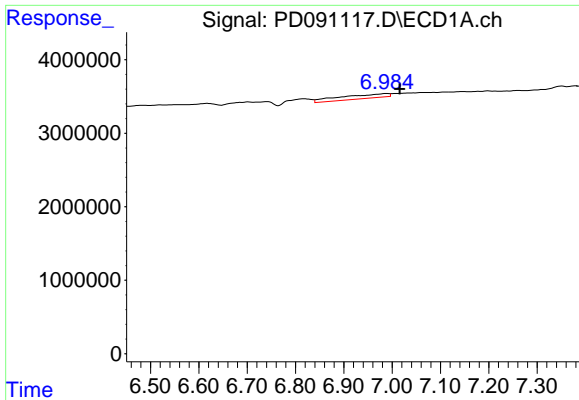
#16 4,4'-DDD

R.T.: 6.702 min
 Delta R.T.: 0.002 min
 Response: 904285
 Conc: 0.22 ng/ml



#16 4,4'-DDD

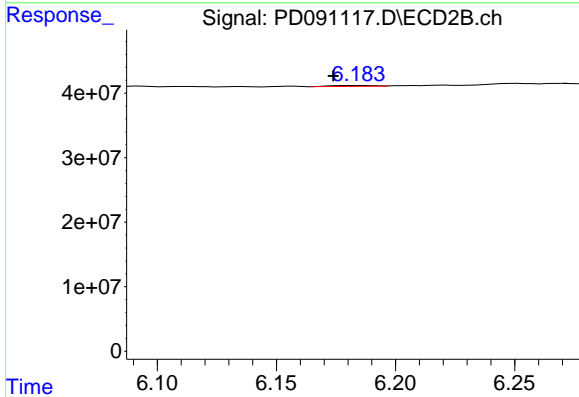
R.T.: 5.913 min
 Delta R.T.: -0.008 min
 Response: -397250
 Conc: N.D.



#17 4,4'-DDT

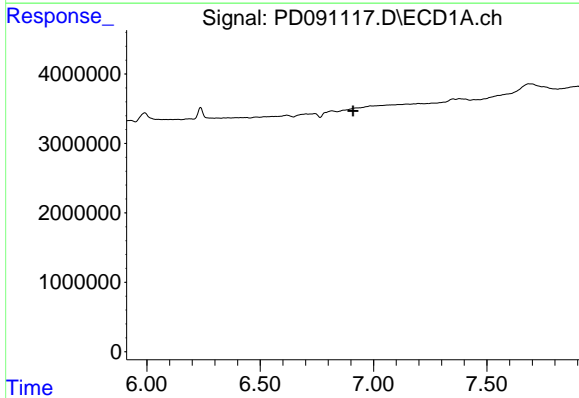
R.T.: 6.987 min
 Delta R.T.: -0.028 min
 Response: 4194621
 Conc: 1.02 ng/ml

Instrument :
 ECD_D
 ClientSampleId :
 I.BLK



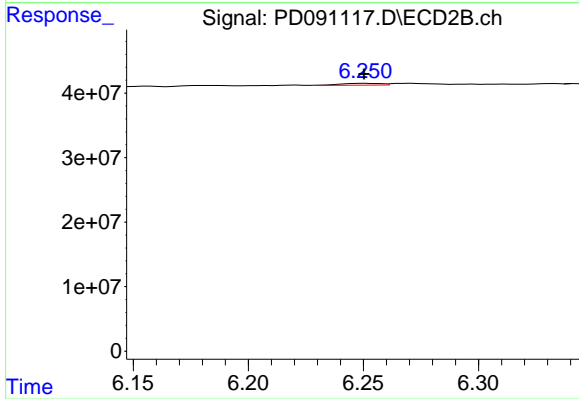
#17 4,4'-DDT

R.T.: 6.185 min
 Delta R.T.: 0.011 min
 Response: 1718375
 Conc: 0.05 ng/ml



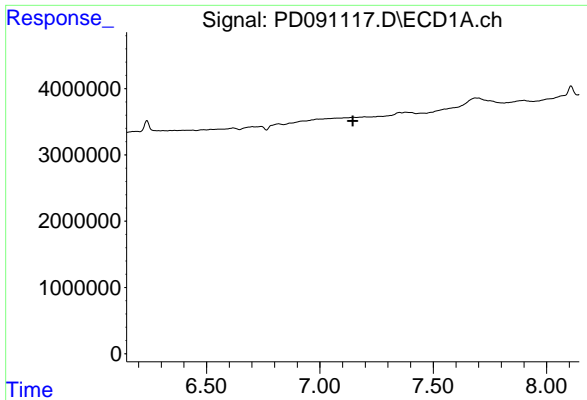
#18 Endrin aldehyde

R.T.: 0.000 min
 Exp R.T. : 6.910 min
 Response: 0
 Conc: N.D.



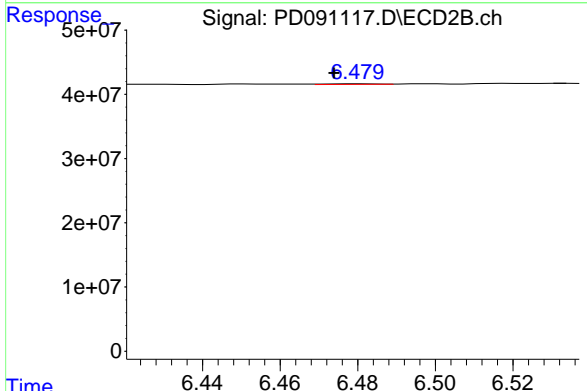
#18 Endrin aldehyde

R.T.: 6.251 min
 Delta R.T.: 0.000 min
 Response: 3634138
 Conc: 0.13 ng/ml

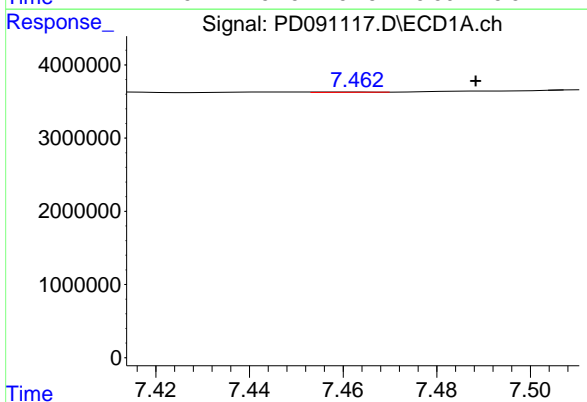


#19 Endosulfan Sulfate
 R.T.: 0.000 min
 Exp R.T.: 7.145 min
 Response: 0
 Conc: N.D.

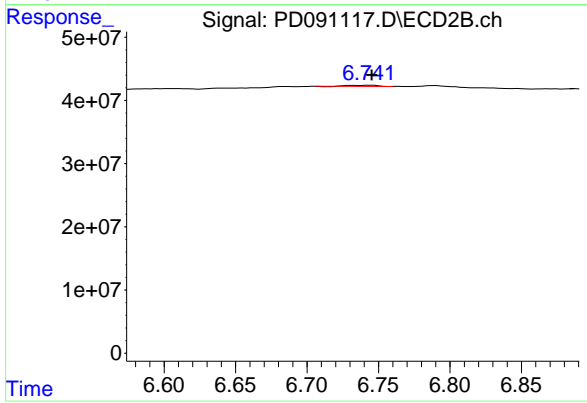
Instrument : ECD_D
 ClientSampleId : I.BLK



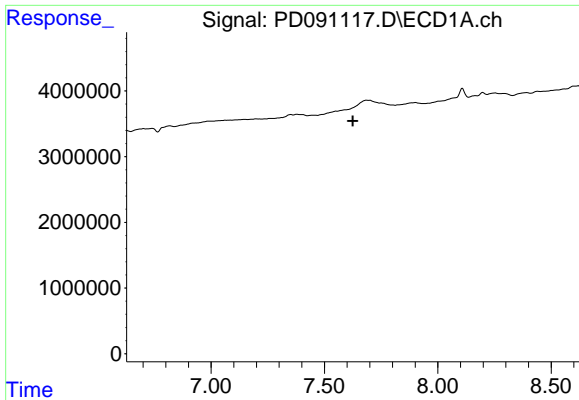
#19 Endosulfan Sulfate
 R.T.: 6.480 min
 Delta R.T.: 0.006 min
 Response: 901236
 Conc: 0.03 ng/ml



#20 Methoxychlor
 R.T.: 7.463 min
 Delta R.T.: -0.026 min
 Response: 36646
 Conc: 0.02 ng/ml



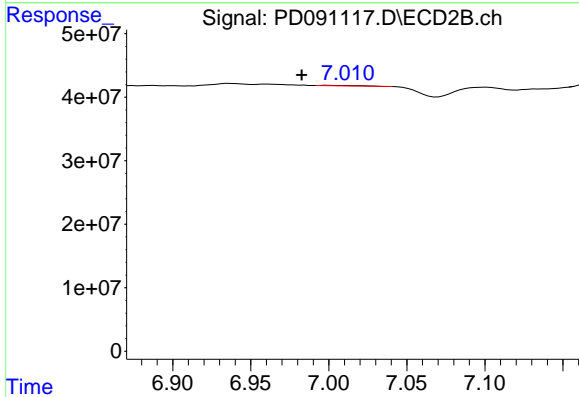
#20 Methoxychlor
 R.T.: 6.743 min
 Delta R.T.: -0.002 min
 Response: 2164130
 Conc: 0.12 ng/ml



#21 Endrin ketone

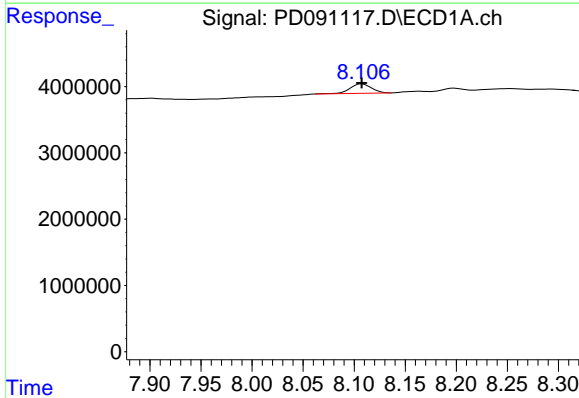
R.T.: 0.000 min
 Exp R.T.: 7.625 min
 Response: 0
 Conc: N.D.

Instrument :
 ECD_D
 ClientSampleId :
 I.BLK



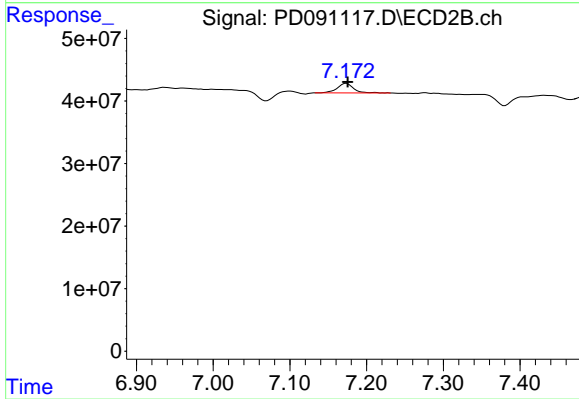
#21 Endrin ketone

R.T.: 6.999 min
 Delta R.T.: 0.017 min
 Response: 1005460
 Conc: 0.03 ng/ml



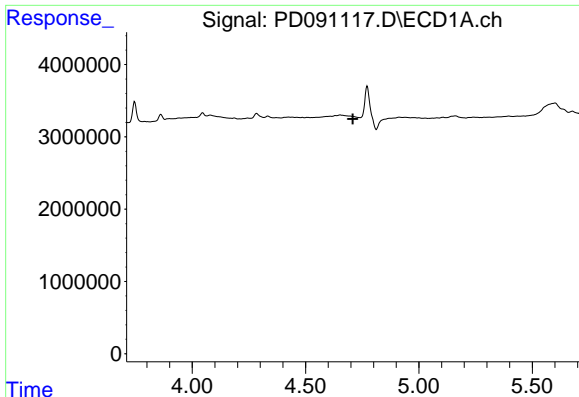
#22 Mirex

R.T.: 8.108 min
 Delta R.T.: 0.000 min
 Response: 2081417
 Conc: 0.65 ng/ml



#22 Mirex

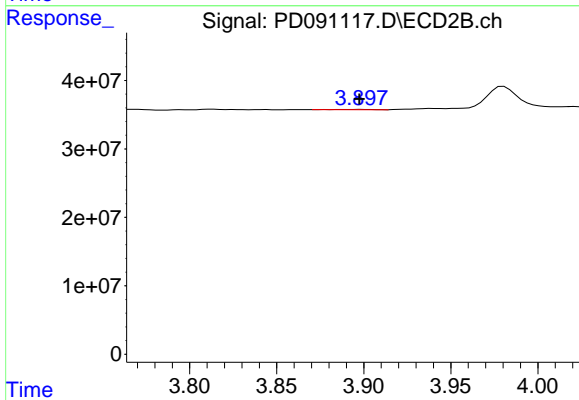
R.T.: 7.174 min
 Delta R.T.: -0.002 min
 Response: 22428076
 Conc: 0.87 ng/ml



#23 Chlordane-1

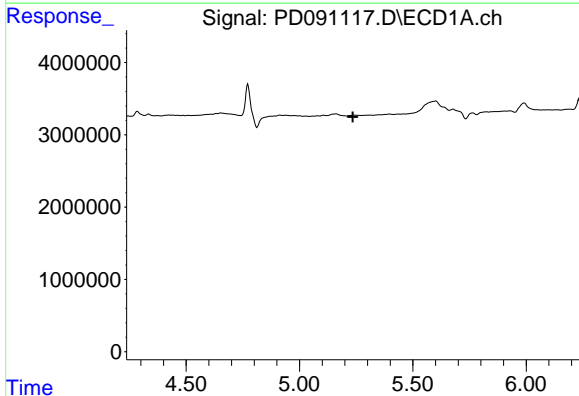
R.T.: 0.000 min
 Exp R.T. : 4.709 min
 Response: 0
 Conc: N.D.

Instrument :
 ECD_D
 ClientSampleId :
 I.BLK



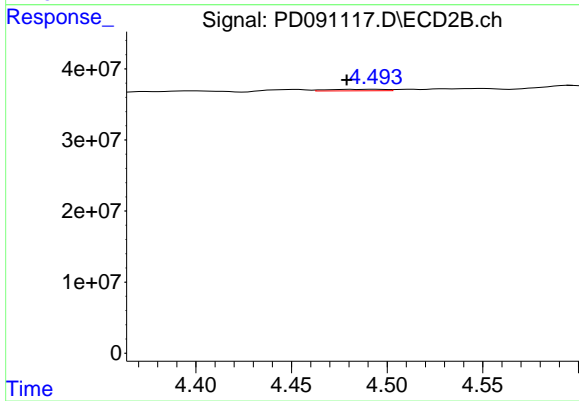
#23 Chlordane-1

R.T.: 3.898 min
 Delta R.T.: 0.000 min
 Response: 743284
 Conc: 0.60 ng/ml



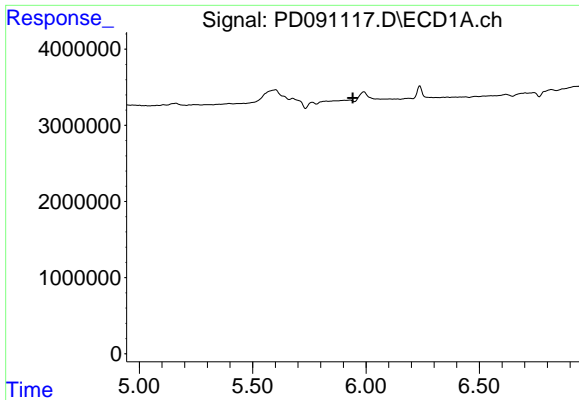
#24 Chlordane-2

R.T.: 0.000 min
 Exp R.T. : 5.236 min
 Response: 0
 Conc: N.D.



#24 Chlordane-2

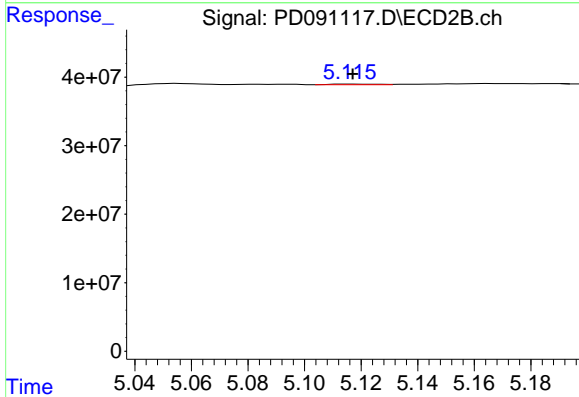
R.T.: 4.494 min
 Delta R.T.: 0.015 min
 Response: 4535633
 Conc: 3.48 ng/ml



#25 Chlordane-3

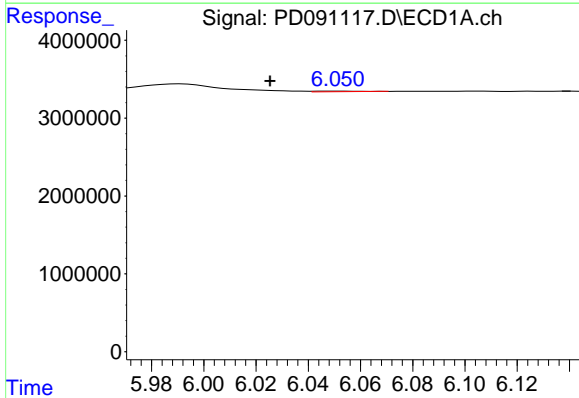
R.T.: 0.000 min
 Exp R.T.: 5.941 min
 Response: 0
 Conc: N.D.

Instrument :
 ECD_D
 ClientSampleId :
 I.BLK



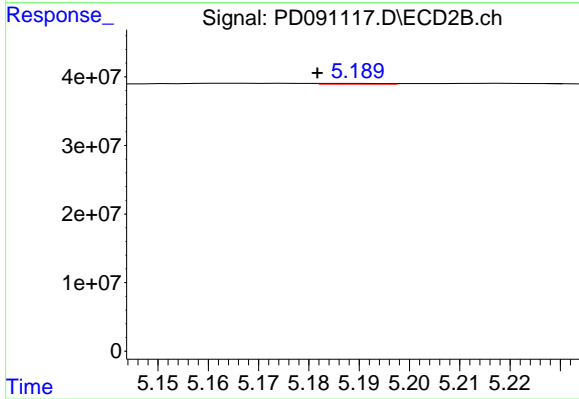
#25 Chlordane-3

R.T.: 5.116 min
 Delta R.T.: 0.000 min
 Response: 1046953
 Conc: 0.27 ng/ml



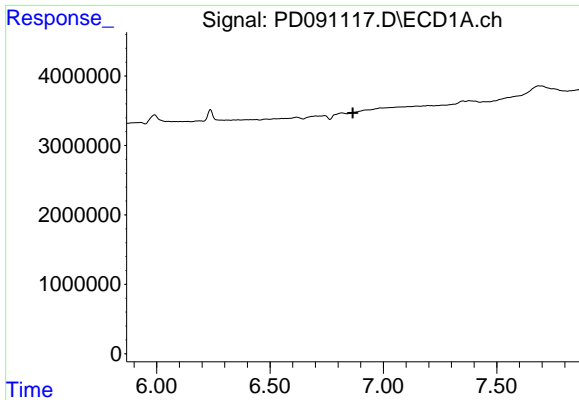
#26 Chlordane-4

R.T.: 6.052 min
 Delta R.T.: 0.026 min
 Response: 97115
 Conc: 0.10 ng/ml



#26 Chlordane-4

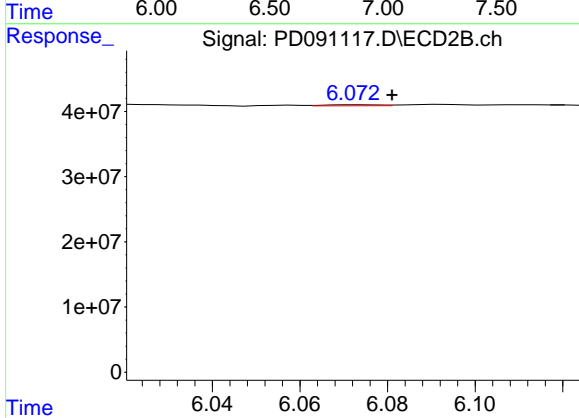
R.T.: 5.189 min
 Delta R.T.: 0.007 min
 Response: 1048465
 Conc: 0.31 ng/ml



#27 Chlordane-5

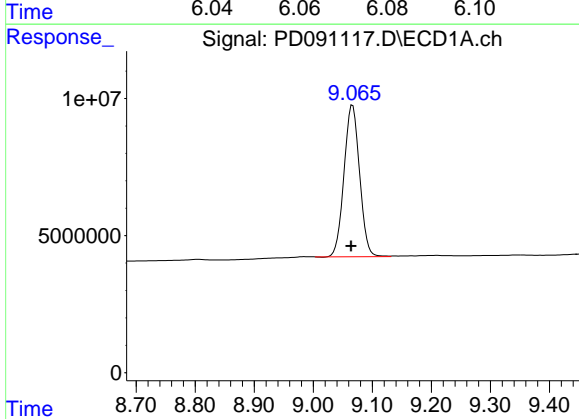
R.T.: 0.000 min
 Exp R.T.: 6.866 min
 Response: 0
 Conc: N.D.

Instrument :
 ECD_D
 ClientSampleId :
 I.BLK



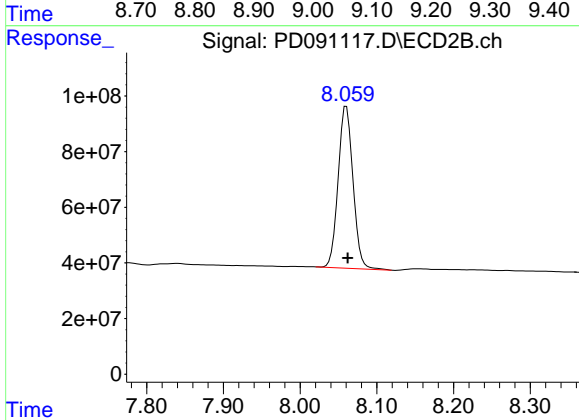
#27 Chlordane-5

R.T.: 6.073 min
 Delta R.T.: -0.008 min
 Response: 1282320
 Conc: 0.87 ng/ml



#28 Decachlorobiphenyl

R.T.: 9.067 min
 Delta R.T.: 0.002 min
 Response: 101382368
 Conc: 21.67 ng/ml



#28 Decachlorobiphenyl

R.T.: 8.060 min
 Delta R.T.: -0.002 min
 Response: 783316463
 Conc: 25.86 ng/ml