

Data Path : Z:\pestpcbsrv\HPCHEM1\ECD_D\Data\PD111225\
 Data File : PD091124.D
 Signal(s) : Signal #1: ECD1A.ch Signal #2: ECD2B.ch
 Acq On : 12 Nov 2025 19:18
 Operator : AR\AJ
 Sample : Q3584-07
 Misc :
 ALS Vial : 56 Sample Multiplier: 1

Instrument :
 ECD_D
 ClientSampleId :
 SEEP-1

Integration File signal 1: autoint1.e
 Integration File signal 2: autoint2.e
 Quant Time: Nov 12 21:32:32 2025
 Quant Method : Z:\pestpcbsrv\HPCHEM1\ECD_D\Method\PD101725.M
 Quant Title : GC Extractables
 QLast Update : Fri Oct 17 17:43:28 2025
 Response via : Initial Calibration
 Integrator: ChemStation

Volume Inj. : 1 µl
 Signal #1 Phase : ZB-MR2 Signal #2 Phase: ZB-MR2
 Signal #1 Info : 30M x 0.32mm x0.5 Signal #2 Info : 30M x 0.32mm x 0.25µm

	Compound	RT#1	RT#2	Resp#1	Resp#2	ng/ml	ng/ml

System Monitoring Compounds							
1)	SA Tetrachlo...	3.545	2.874	80307858	542.9E6	25.788	18.231 #
28)	SA Decachlor...	9.066	8.059	67001769	230.5E6	14.323	7.611 #
Target Compounds							
2)	A alpha-BHC	0.000	3.402f	0	27869114	N.D.	0.545 #
3)	MA gamma-BHC...	4.316	3.723	5074932	41774674	0.746	0.884
4)	MA Heptachlor	4.920	4.065	17658996	17234172	3.159	0.386 #
5)	MB Aldrin	5.241f	0.000	2941997	0	0.449	N.D. #
6)	B beta-BHC	4.507	4.022	8854119	6555084	3.380	0.331 #
7)	B delta-BHC	4.775	4.264	20469596	-6178533	3.027	N.D. #
8)	B Heptachlo...	5.707f	4.840f	499850	37612334	0.086	0.882 #
9)	A Endosulfan I	6.054	5.243	2298267	31462954	0.415	0.799 #
10)	B gamma-Chl...	5.926	5.124	1762939	32120419	0.297	0.715 #
11)	B alpha-Chl...	5.998f	5.171	3392502	27564526	0.549	0.639
12)	B 4,4'-DDE	0.000	5.369	0	24993231	N.D.	0.570 #
14)	MA Endrin	6.577	5.793	1565878	29989038	0.316	0.741 #
15)	B Endosulfa...	6.784	6.049f	1037665	7702665	0.208	0.205
17)	MA 4,4'-DDT	6.995f	6.187	3499437	41121420	0.851	1.172 #
18)	B Endrin al...	6.905	6.226f	6680749	9040088	1.824	0.326 #
19)	B Endosulfa...	0.000	6.461	0	21728355	N.D.	0.606 #
20)	A Methoxychlor	7.489	6.738	4344457	9449258	2.044	0.542 #
22)	Mirex	8.079f	7.162	2488586	152.5E6	0.777	5.937 #
23)	Chlordane-1	4.722	3.903	14229205	27936411	75.298	22.416 #
24)	Chlordane-2	5.241	4.495	2941997	27719592	15.233	21.249 #
25)	Chlordane-3	5.926	5.124	1762939	32120419	2.311	8.254 #
26)	Chlordane-4	5.998f	5.171	3392502	27564526	3.501	8.250 #
27)	Chlordane-5	6.864	6.098	2971439	26588836	19.775	18.014

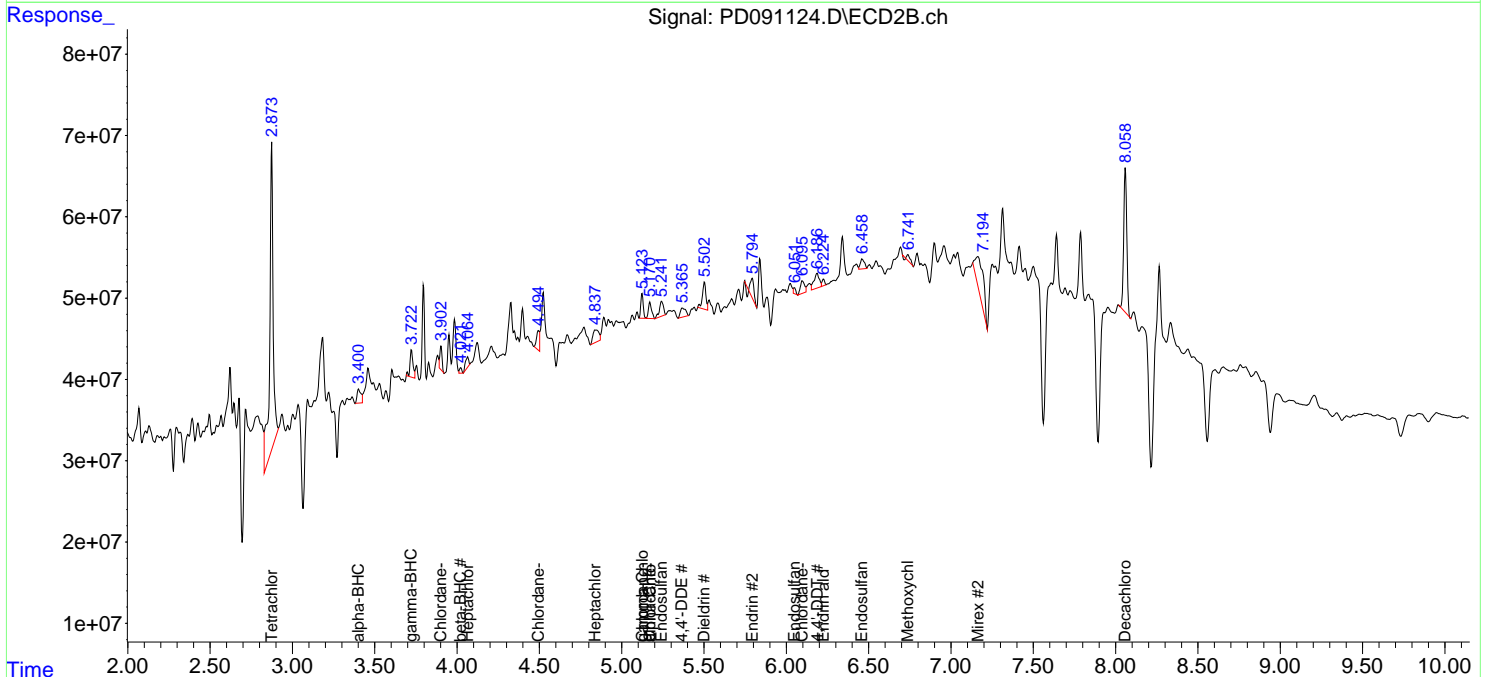
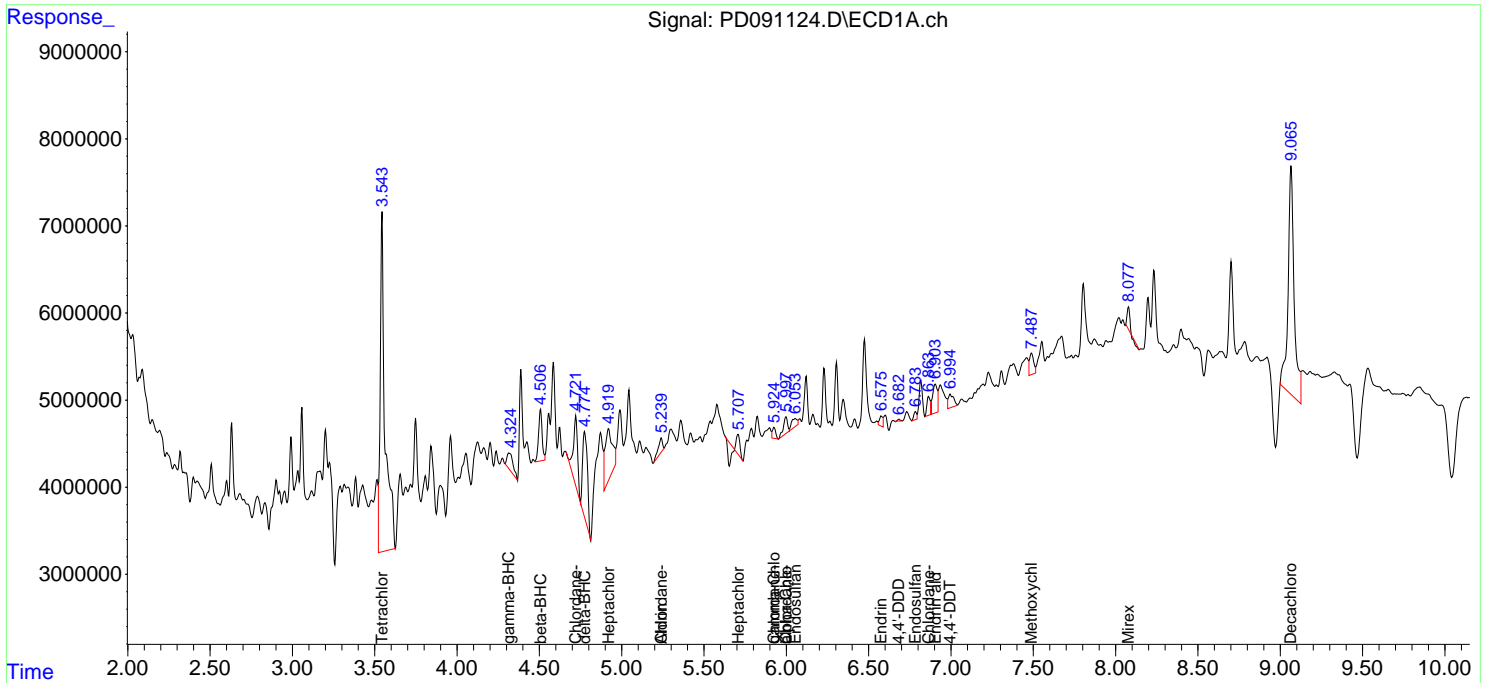
(f)=RT Delta > 1/2 Window (#)=Amounts differ by > 25% (m)=manual int.

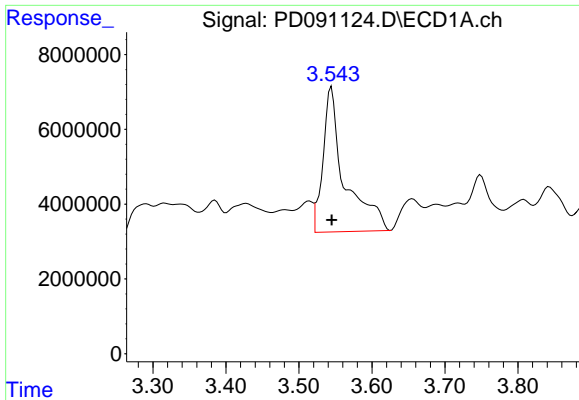
Data Path : Z:\pestpcbsrv\HPCHEM1\ECD_D\Data\PD111225\
 Data File : PD091124.D
 Signal(s) : Signal #1: ECD1A.ch Signal #2: ECD2B.ch
 Acq On : 12 Nov 2025 19:18
 Operator : AR\AJ
 Sample : Q3584-07
 Misc :
 ALS Vial : 56 Sample Multiplier: 1

Instrument :
 ECD_D
 ClientSampleId :
 SEEP-1

Integration File signal 1: autoint1.e
 Integration File signal 2: autoint2.e
 Quant Time: Nov 12 21:32:32 2025
 Quant Method : Z:\pestpcbsrv\HPCHEM1\ECD_D\Method\PD101725.M
 Quant Title : GC Extractables
 QLast Update : Fri Oct 17 17:43:28 2025
 Response via : Initial Calibration
 Integrator: ChemStation

Volume Inj. : 1 µl
 Signal #1 Phase : ZB-MR1 Signal #2 Phase: ZB-MR2
 Signal #1 Info : 30M x 0.32mm x0.5 Signal #2 Info : 30M x 0.32mm x 0.25µm

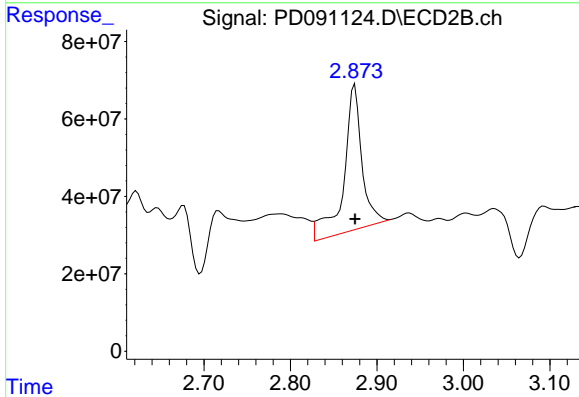




#1 Tetrachloro-m-xylene

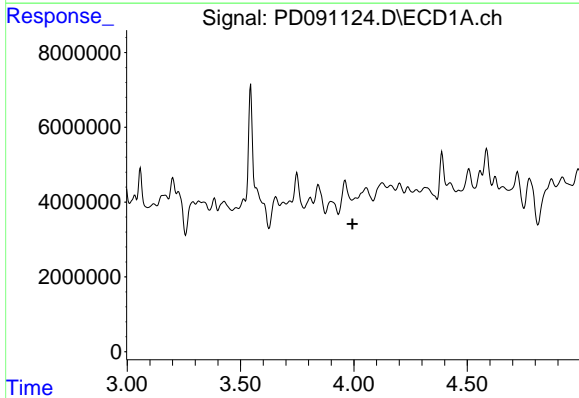
R.T.: 3.545 min
 Delta R.T.: 0.000 min
 Response: 80307858
 Conc: 25.79 ng/ml

Instrument :
 ECD_D
 ClientSampleId :
 SEEP-1



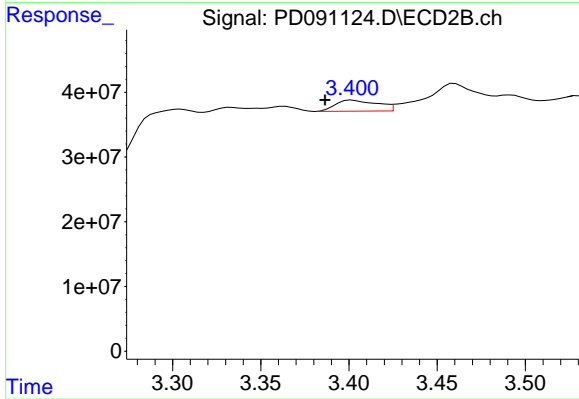
#1 Tetrachloro-m-xylene

R.T.: 2.874 min
 Delta R.T.: 0.000 min
 Response: 542857950
 Conc: 18.23 ng/ml



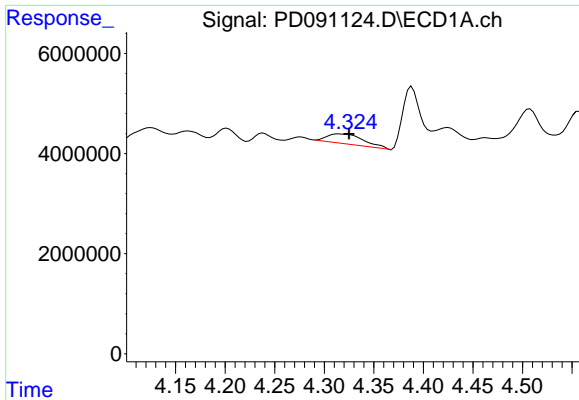
#2 alpha-BHC

R.T.: 0.000 min
 Exp R.T. : 3.994 min
 Response: 0
 Conc: N.D.



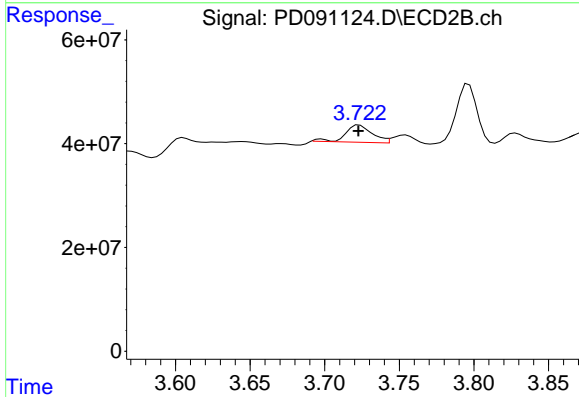
#2 alpha-BHC

R.T.: 3.402 min
 Delta R.T.: 0.015 min
 Response: 27869114
 Conc: 0.55 ng/ml

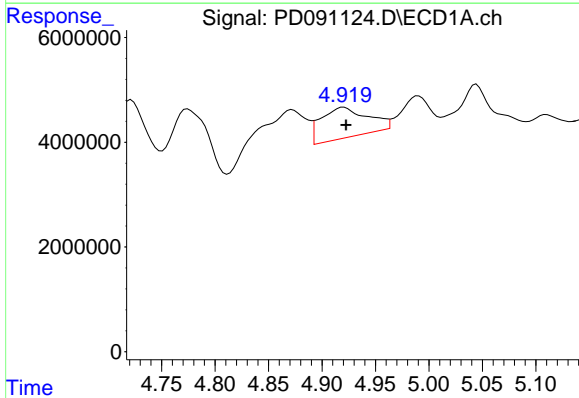


#3 gamma-BHC (Lindane)
 R.T.: 4.316 min
 Delta R.T.: -0.009 min
 Response: 5074932
 Conc: 0.75 ng/ml

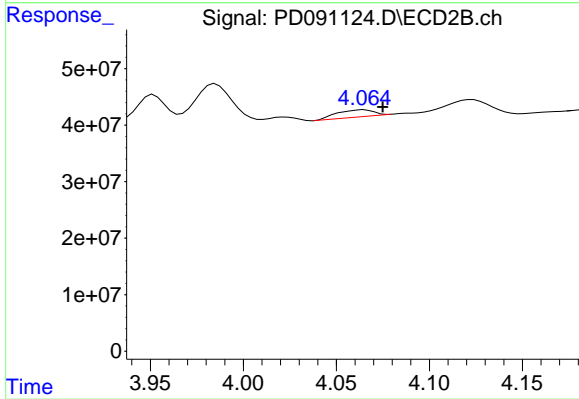
Instrument :
 ECD_D
 ClientSampleId :
 SEEP-1



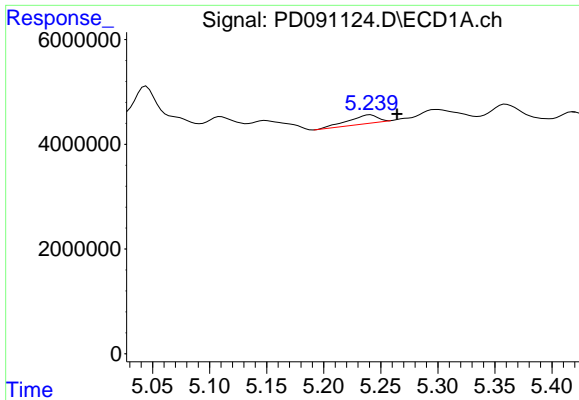
#3 gamma-BHC (Lindane)
 R.T.: 3.723 min
 Delta R.T.: 0.000 min
 Response: 41774674
 Conc: 0.88 ng/ml



#4 Heptachlor
 R.T.: 4.920 min
 Delta R.T.: -0.002 min
 Response: 17658996
 Conc: 3.16 ng/ml

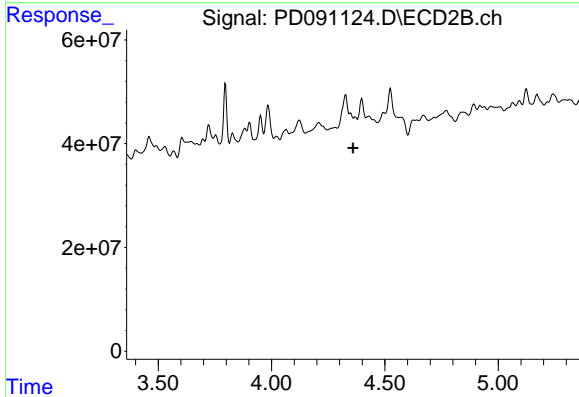


#4 Heptachlor
 R.T.: 4.065 min
 Delta R.T.: -0.010 min
 Response: 17234172
 Conc: 0.39 ng/ml

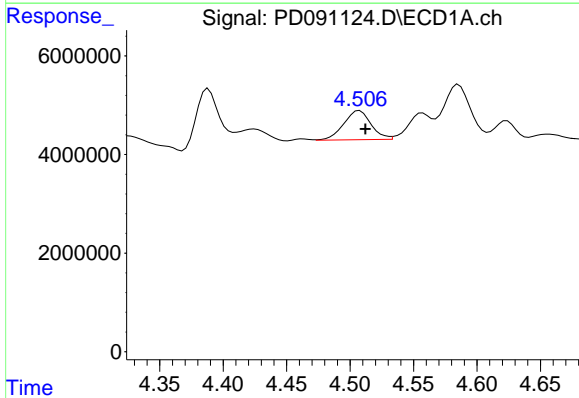


#5 Aldrin
 R.T.: 5.241 min
 Delta R.T.: -0.024 min
 Response: 2941997
 Conc: 0.45 ng/ml

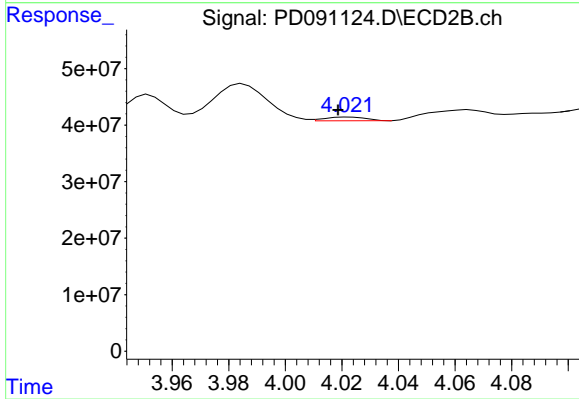
Instrument :
 ECD_D
 ClientSampleId :
 SEEP-1



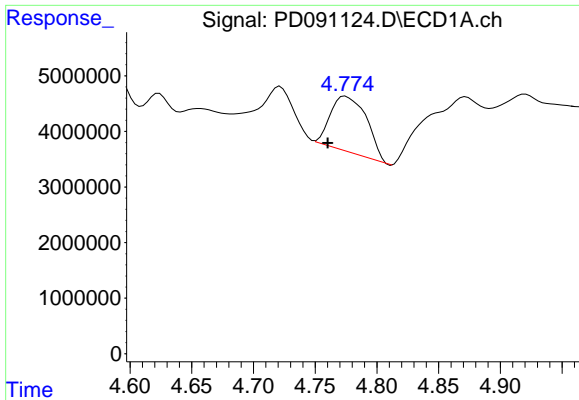
#5 Aldrin
 R.T.: 0.000 min
 Exp R.T. : 4.361 min
 Response: 0
 Conc: N.D.



#6 beta-BHC
 R.T.: 4.507 min
 Delta R.T.: -0.005 min
 Response: 8854119
 Conc: 3.38 ng/ml



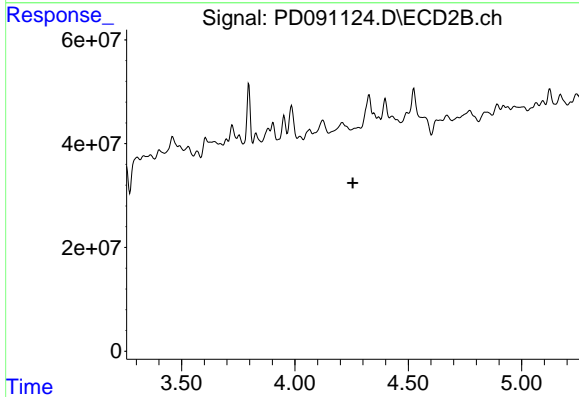
#6 beta-BHC
 R.T.: 4.022 min
 Delta R.T.: 0.004 min
 Response: 6555084
 Conc: 0.33 ng/ml



#7 delta-BHC

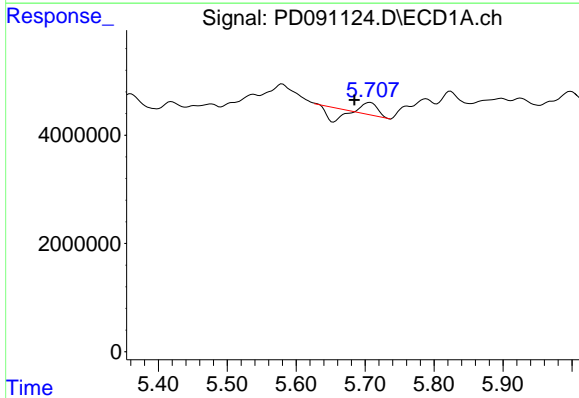
R.T.: 4.775 min
 Delta R.T.: 0.015 min
 Response: 20469596
 Conc: 3.03 ng/ml

Instrument :
 ECD_D
 ClientSampleId :
 SEEP-1



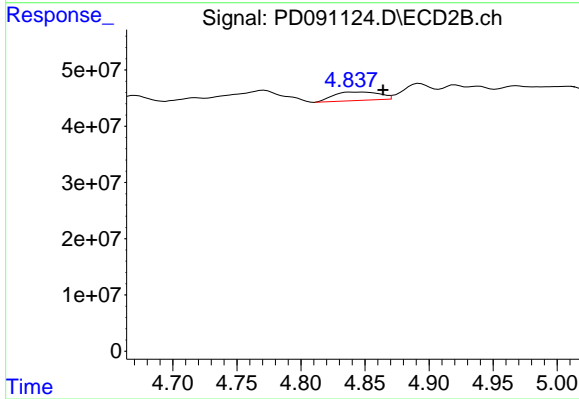
#7 delta-BHC

R.T.: 4.264 min
 Delta R.T.: 0.009 min
 Response: -6178533
 Conc: N.D.



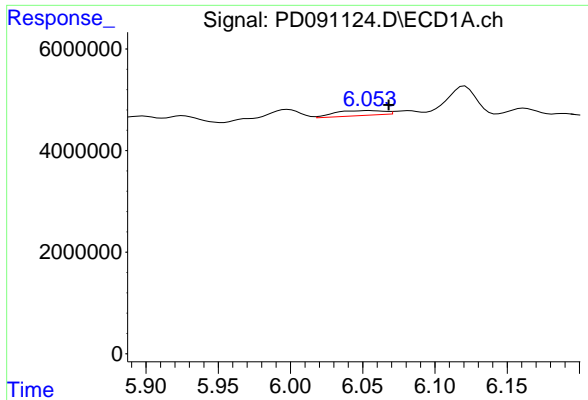
#8 Heptachlor epoxide

R.T.: 5.707 min
 Delta R.T.: 0.023 min
 Response: 499850
 Conc: 0.09 ng/ml



#8 Heptachlor epoxide

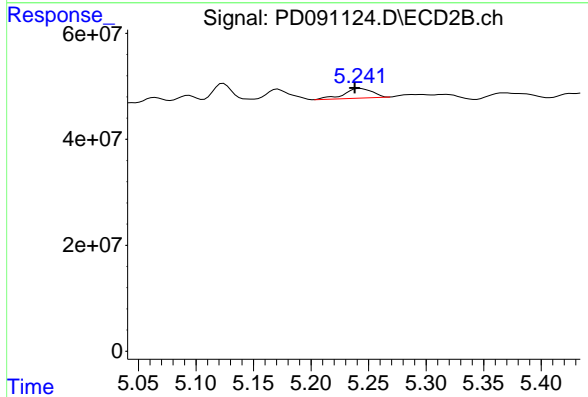
R.T.: 4.840 min
 Delta R.T.: -0.024 min
 Response: 37612334
 Conc: 0.88 ng/ml



#9 Endosulfan I

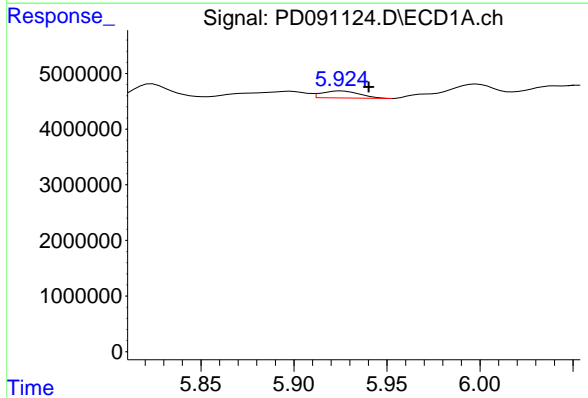
R.T.: 6.054 min
 Delta R.T.: -0.013 min
 Response: 2298267
 Conc: 0.42 ng/ml

Instrument :
 ECD_D
 ClientSampleId :
 SEEP-1



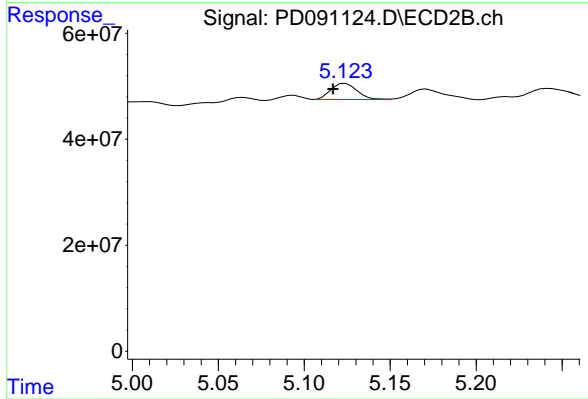
#9 Endosulfan I

R.T.: 5.243 min
 Delta R.T.: 0.005 min
 Response: 31462954
 Conc: 0.80 ng/ml



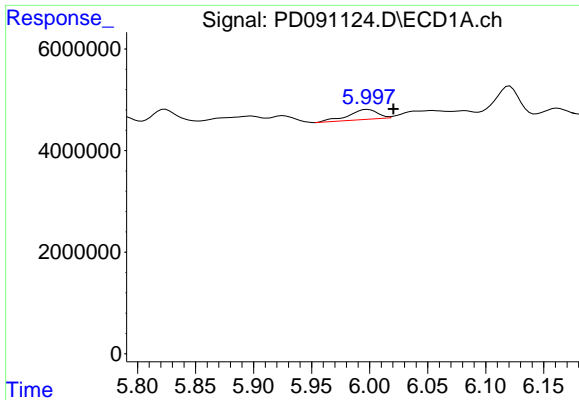
#10 gamma-Chlordane

R.T.: 5.926 min
 Delta R.T.: -0.015 min
 Response: 1762939
 Conc: 0.30 ng/ml



#10 gamma-Chlordane

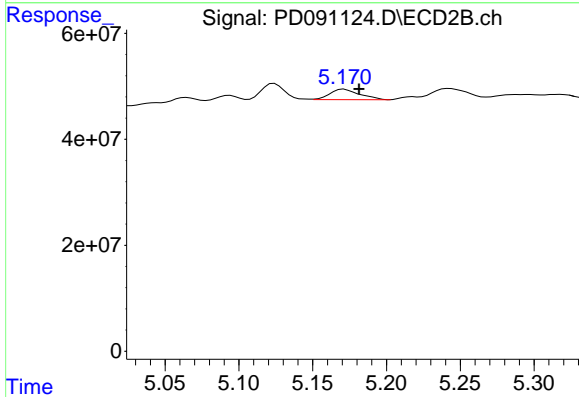
R.T.: 5.124 min
 Delta R.T.: 0.007 min
 Response: 32120419
 Conc: 0.71 ng/ml



#11 alpha-Chlordane

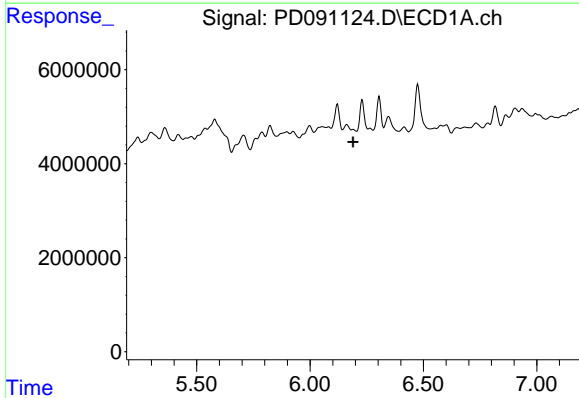
R.T.: 5.998 min
 Delta R.T.: -0.022 min
 Response: 3392502
 Conc: 0.55 ng/ml

Instrument :
 ECD_D
 ClientSampleId :
 SEEP-1



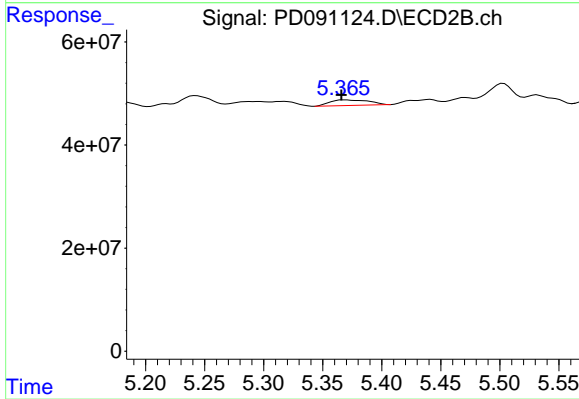
#11 alpha-Chlordane

R.T.: 5.171 min
 Delta R.T.: -0.010 min
 Response: 27564526
 Conc: 0.64 ng/ml



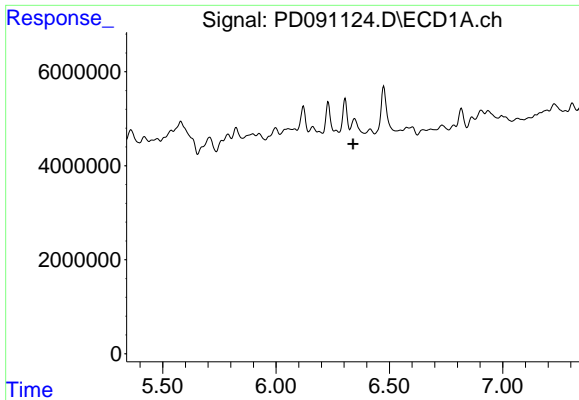
#12 4,4'-DDE

R.T.: 0.000 min
 Exp R.T. : 6.190 min
 Response: 0
 Conc: N.D.



#12 4,4'-DDE

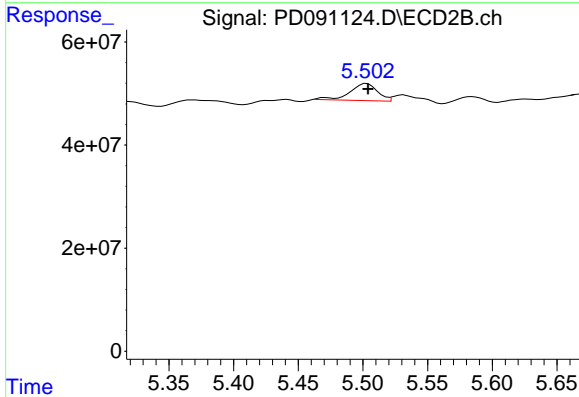
R.T.: 5.369 min
 Delta R.T.: 0.003 min
 Response: 24993231
 Conc: 0.57 ng/ml



#13 Dieldrin

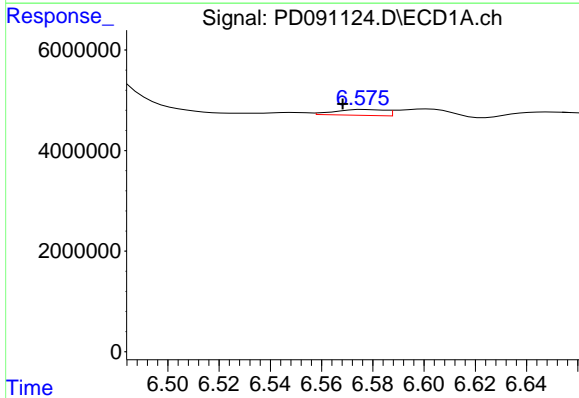
R.T.: 6.346 min
 Delta R.T.: 0.006 min
 Response: -7947106
 Conc: N.D.

Instrument :
 ECD_D
 ClientSampleId :
 SEEP-1



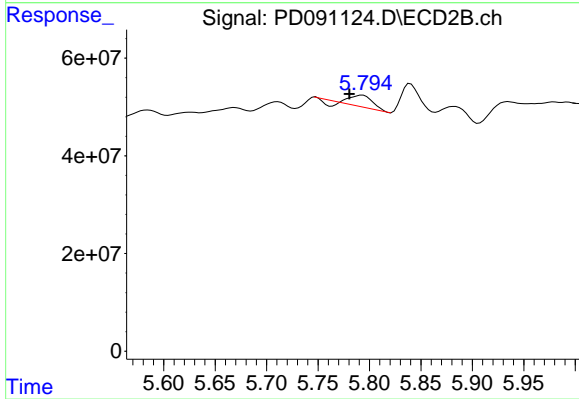
#13 Dieldrin

R.T.: 5.503 min
 Delta R.T.: 0.000 min
 Response: 49210097
 Conc: 1.11 ng/ml



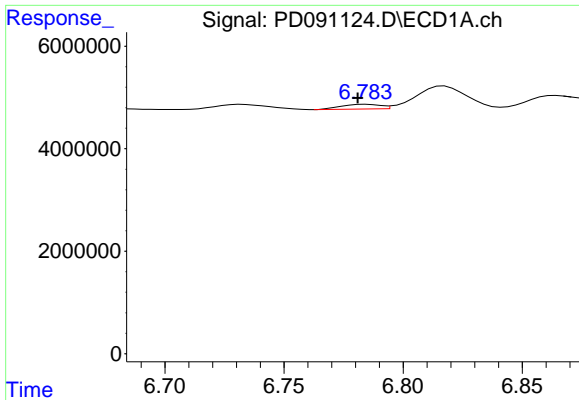
#14 Endrin

R.T.: 6.577 min
 Delta R.T.: 0.009 min
 Response: 1565878
 Conc: 0.32 ng/ml



#14 Endrin

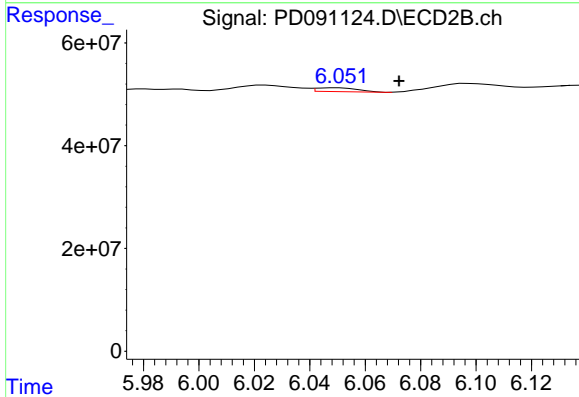
R.T.: 5.793 min
 Delta R.T.: 0.013 min
 Response: 29989038
 Conc: 0.74 ng/ml



#15 Endosulfan II

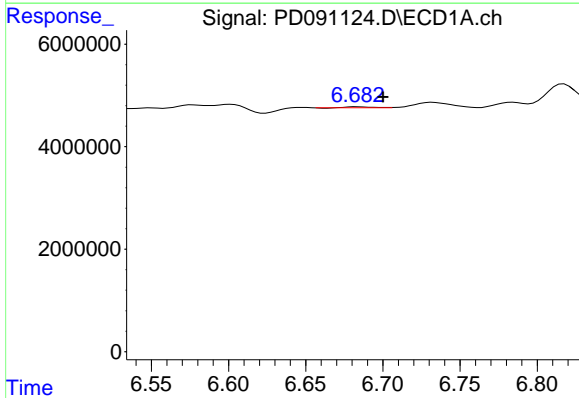
R.T.: 6.784 min
 Delta R.T.: 0.004 min
 Response: 1037665
 Conc: 0.21 ng/ml

Instrument :
 ECD_D
 ClientSampleId :
 SEEP-1



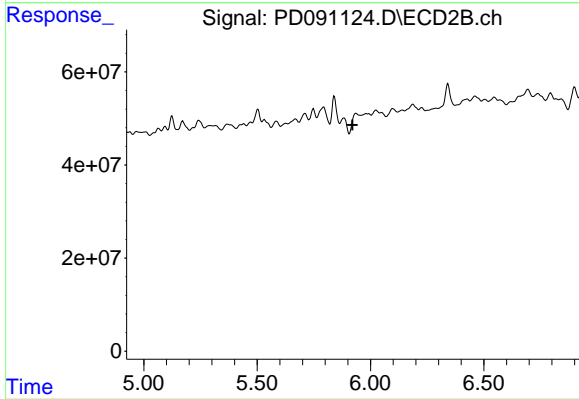
#15 Endosulfan II

R.T.: 6.049 min
 Delta R.T.: -0.023 min
 Response: 7702665
 Conc: 0.21 ng/ml



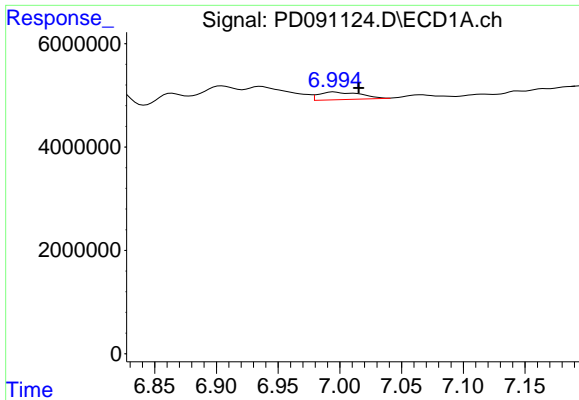
#16 4,4'-DDD

R.T.: 6.684 min
 Delta R.T.: -0.016 min
 Response: 182776
 Conc: 0.05 ng/ml



#16 4,4'-DDD

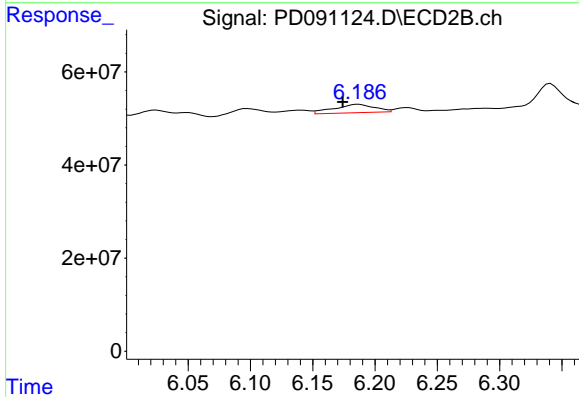
R.T.: 5.936 min
 Delta R.T.: 0.015 min
 Response: -30832208
 Conc: N.D.



#17 4,4'-DDT

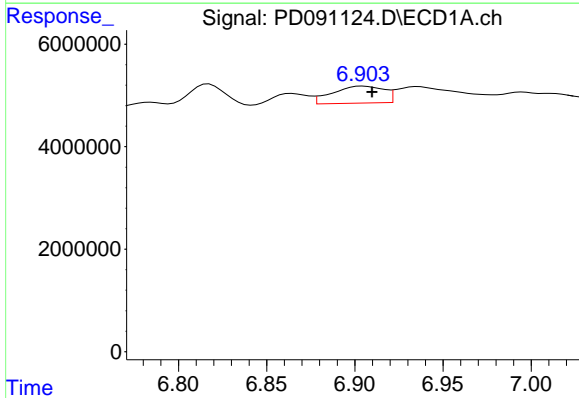
R.T.: 6.995 min
 Delta R.T.: -0.020 min
 Response: 3499437
 Conc: 0.85 ng/ml

Instrument :
 ECD_D
 ClientSampleId :
 SEEP-1



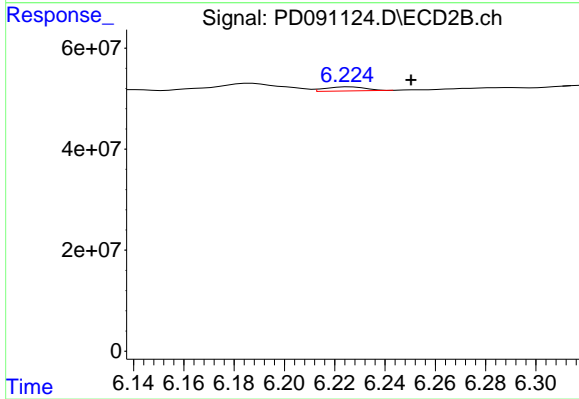
#17 4,4'-DDT

R.T.: 6.187 min
 Delta R.T.: 0.013 min
 Response: 41121420
 Conc: 1.17 ng/ml



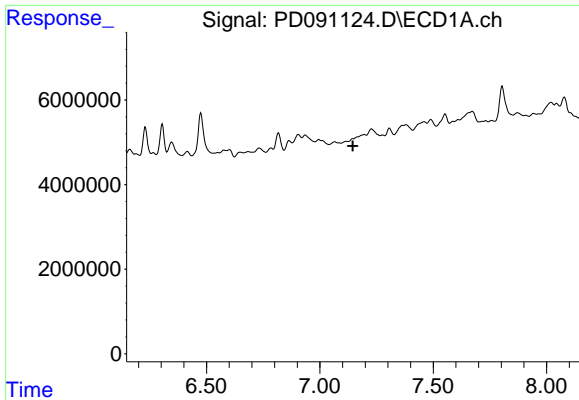
#18 Endrin aldehyde

R.T.: 6.905 min
 Delta R.T.: -0.005 min
 Response: 6680749
 Conc: 1.82 ng/ml



#18 Endrin aldehyde

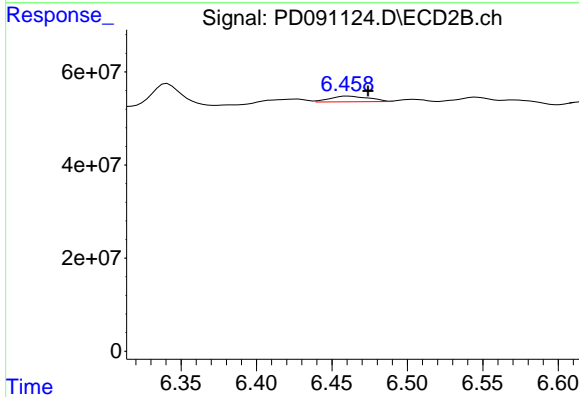
R.T.: 6.226 min
 Delta R.T.: -0.024 min
 Response: 9040088
 Conc: 0.33 ng/ml



#19 Endosulfan Sulfate

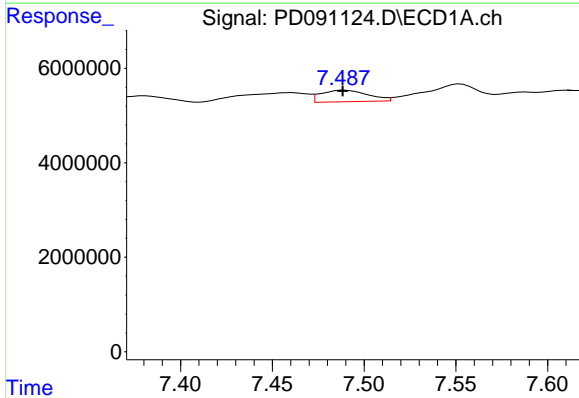
R.T.: 0.000 min
 Exp R.T.: 7.145 min
 Response: 0
 Conc: N.D.

Instrument :
 ECD_D
 ClientSampleId :
 SEEP-1



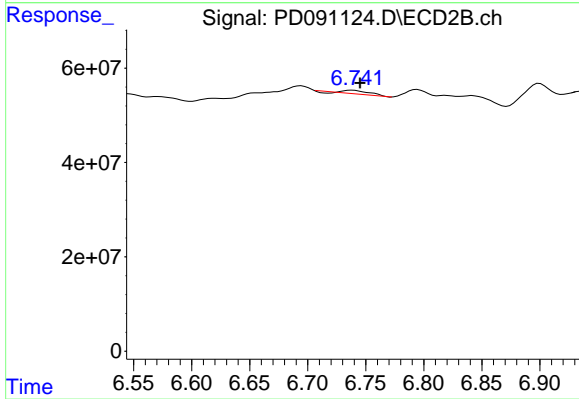
#19 Endosulfan Sulfate

R.T.: 6.461 min
 Delta R.T.: -0.013 min
 Response: 21728355
 Conc: 0.61 ng/ml



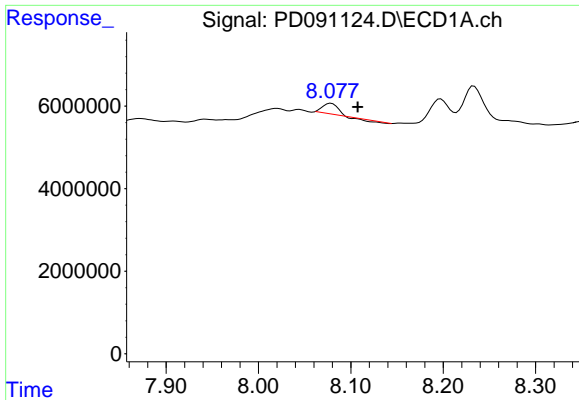
#20 Methoxychlor

R.T.: 7.489 min
 Delta R.T.: 0.001 min
 Response: 4344457
 Conc: 2.04 ng/ml



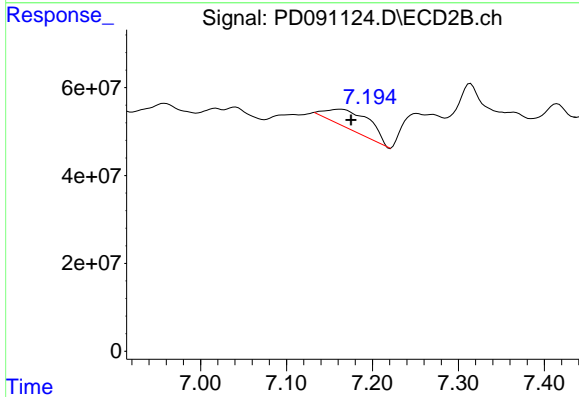
#20 Methoxychlor

R.T.: 6.738 min
 Delta R.T.: -0.007 min
 Response: 9449258
 Conc: 0.54 ng/ml

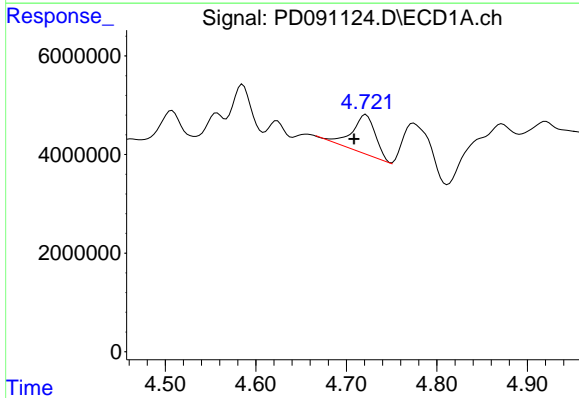


#22 Mirex
 R.T.: 8.079 min
 Delta R.T.: -0.029 min
 Response: 2488586
 Conc: 0.78 ng/ml

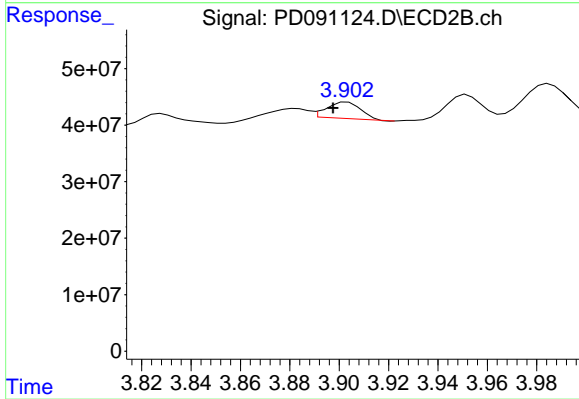
Instrument :
 ECD_D
 ClientSampleId :
 SEEP-1



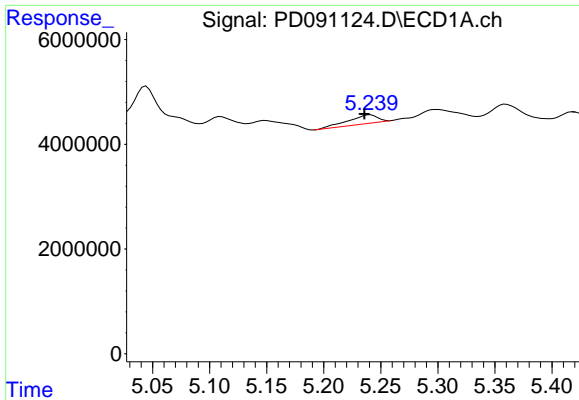
#22 Mirex
 R.T.: 7.162 min
 Delta R.T.: -0.013 min
 Response: 152517423
 Conc: 5.94 ng/ml



#23 Chlordane-1
 R.T.: 4.722 min
 Delta R.T.: 0.013 min
 Response: 14229205
 Conc: 75.30 ng/ml



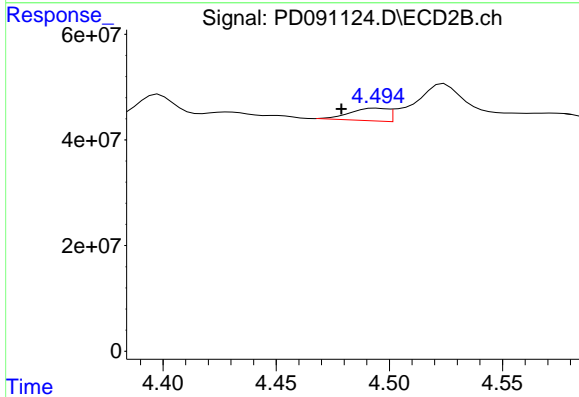
#23 Chlordane-1
 R.T.: 3.903 min
 Delta R.T.: 0.006 min
 Response: 27936411
 Conc: 22.42 ng/ml



#24 Chlordane-2

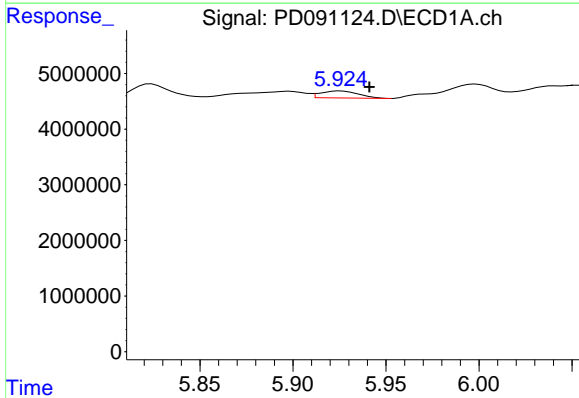
R.T.: 5.241 min
 Delta R.T.: 0.005 min
 Response: 2941997
 Conc: 15.23 ng/ml

Instrument :
 ECD_D
 ClientSampleId :
 SEEP-1



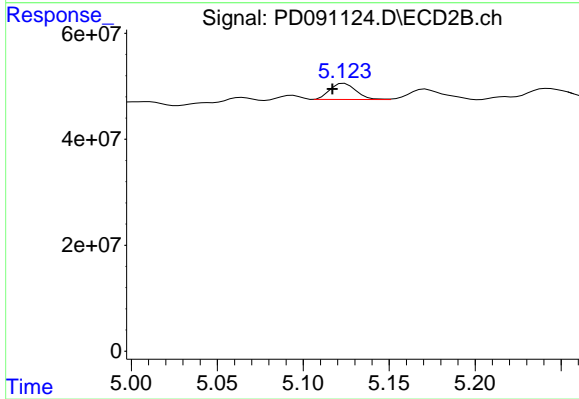
#24 Chlordane-2

R.T.: 4.495 min
 Delta R.T.: 0.016 min
 Response: 27719592
 Conc: 21.25 ng/ml



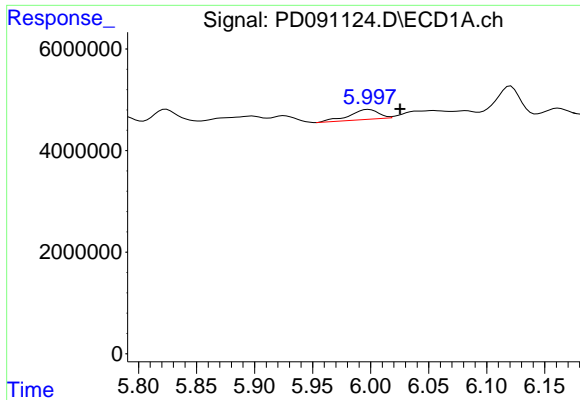
#25 Chlordane-3

R.T.: 5.926 min
 Delta R.T.: -0.016 min
 Response: 1762939
 Conc: 2.31 ng/ml



#25 Chlordane-3

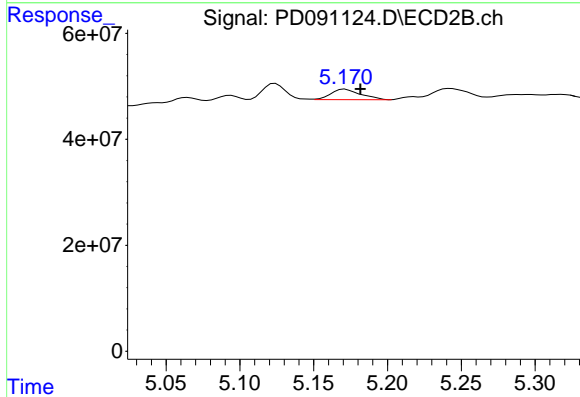
R.T.: 5.124 min
 Delta R.T.: 0.007 min
 Response: 32120419
 Conc: 8.25 ng/ml



#26 Chlordane-4

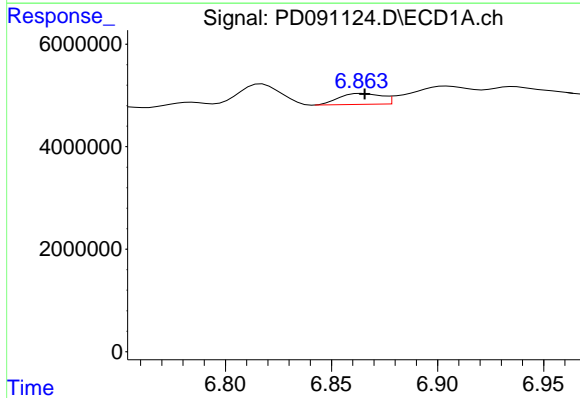
R.T.: 5.998 min
 Delta R.T.: -0.027 min
 Response: 3392502
 Conc: 3.50 ng/ml

Instrument :
 ECD_D
 ClientSampleId :
 SEEP-1



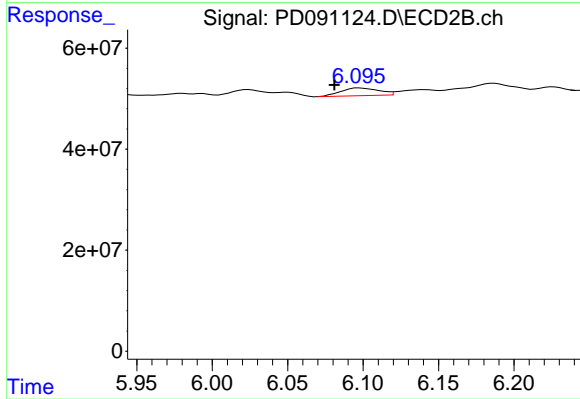
#26 Chlordane-4

R.T.: 5.171 min
 Delta R.T.: -0.010 min
 Response: 27564526
 Conc: 8.25 ng/ml



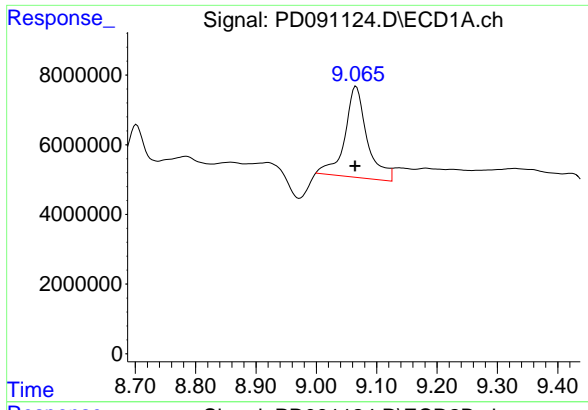
#27 Chlordane-5

R.T.: 6.864 min
 Delta R.T.: -0.001 min
 Response: 2971439
 Conc: 19.78 ng/ml



#27 Chlordane-5

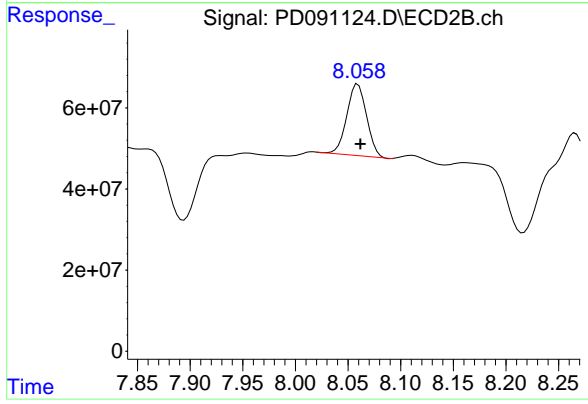
R.T.: 6.098 min
 Delta R.T.: 0.017 min
 Response: 26588836
 Conc: 18.01 ng/ml



#28 Decachlorobiphenyl

R.T.: 9.066 min
Delta R.T.: 0.002 min
Response: 67001769
Conc: 14.32 ng/ml

Instrument :
ECD_D
ClientSampleId :
SEEP-1



#28 Decachlorobiphenyl

R.T.: 8.059 min
Delta R.T.: -0.002 min
Response: 230536544
Conc: 7.61 ng/ml