

Data Path : Z:\pestpcbsrv\HPCHEM1\ECD\_D\Data\PD111225\  
 Data File : PD091134.D  
 Signal(s) : Signal #1: ECD1A.ch Signal #2: ECD2B.ch  
 Acq On : 12 Nov 2025 22:29  
 Operator : AR\AJ  
 Sample : Q3604-01  
 Misc :  
 ALS Vial : 64 Sample Multiplier: 1

Instrument :  
 ECD\_D  
 ClientSampleId :  
 S-1

Integration File signal 1: autoint1.e  
 Integration File signal 2: autoint2.e  
 Quant Time: Nov 13 12:42:53 2025  
 Quant Method : Z:\pestpcbsrv\HPCHEM1\ECD\_D\Method\PD101725.M  
 Quant Title : GC Extractables  
 QLast Update : Fri Oct 17 17:43:28 2025  
 Response via : Initial Calibration  
 Integrator: ChemStation

Volume Inj. : 1 µl  
 Signal #1 Phase : ZB-MR2 Signal #2 Phase: ZB-MR2  
 Signal #1 Info : 30M x 0.32mm x0.5 Signal #2 Info : 30M x 0.32mm x 0.25µm

Compound	RT#1	RT#2	Resp#1	Resp#2	ng/ml	ng/ml
-----						
System Monitoring Compounds						
1) SA Tetrachlo...	3.544	2.860	56003222	81296339	17.983	2.730 #
28) SA Decachlor...	9.064	8.079	80164738	605.1E6	17.137	19.977
Target Compounds						
2) A alpha-BHC	3.994	3.399	1395127	20711316	0.194	0.405 #
3) MA gamma-BHC...	4.317	3.728	2343202	-1950705	0.345	N.D. #
4) MA Heptachlor	4.939f	4.095f	946968	1215644	0.169	0.027 #
5) MB Aldrin	0.000	4.350	0	5344490	N.D.	0.115 #
6) B beta-BHC	4.511	4.000f	671952	139.1E6	0.257	7.015 #
7) B delta-BHC	4.772	4.254	20622042	463340	3.050	0.010 #
8) B Heptachlo...	5.676	4.868	1183342	6179351	0.204	0.145 #
9) A Endosulfan I	6.073	5.238	76348	5429807	0.014	0.138 #
10) B gamma-Chl...	0.000	5.128	0	1261950	N.D.	0.028 #
11) B alpha-Chl...	6.024	5.177	870877	3778941	0.141	0.088 #
12) B 4,4'-DDE	6.171f	5.354	425456	4858817	0.080	0.111 #
13) MA Dieldrin	6.355	5.493	2261829	13742702	0.388	0.311
14) MA Endrin	0.000	5.767	0	548514	N.D.	0.014 #
15) B Endosulfa...	6.771	6.075	965249	3005508	0.193	0.080 #
16) A 4,4'-DDD	0.000	5.920	0	1552763	N.D.	0.043 #
17) MA 4,4'-DDT	0.000	6.173	0	492189	N.D.	0.014 #
18) B Endrin al...	0.000	6.278f	0	5882699	N.D.	0.212 #
19) B Endosulfa...	0.000	6.466	0	1066476	N.D.	0.030 #
21) B Endrin ke...	7.651f	0.000	283570	0	0.058	N.D. #
22) Mirex	0.000	7.194f	0	1378456	N.D.	0.054 #
23) Chlordane-1	0.000	3.917f	0	8449858	N.D.	6.780 #
24) Chlordane-2	5.217	4.472	326056	4056435	1.688	3.110 #
25) Chlordane-3	0.000	5.128	0	1261950	N.D.	0.324 #
26) Chlordane-4	6.024	5.177	870877	3778941	0.899	1.131 #
27) Chlordane-5	0.000	6.075	0	3005508	N.D.	2.036 #

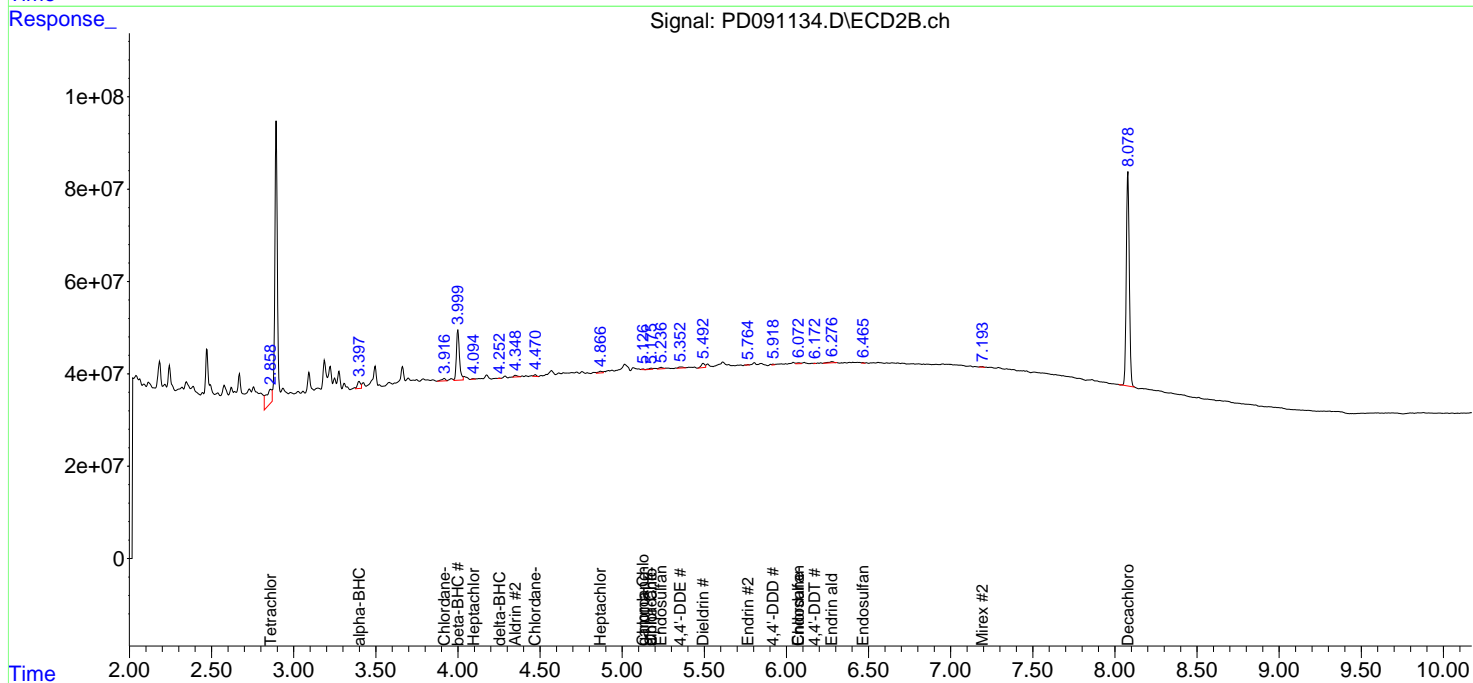
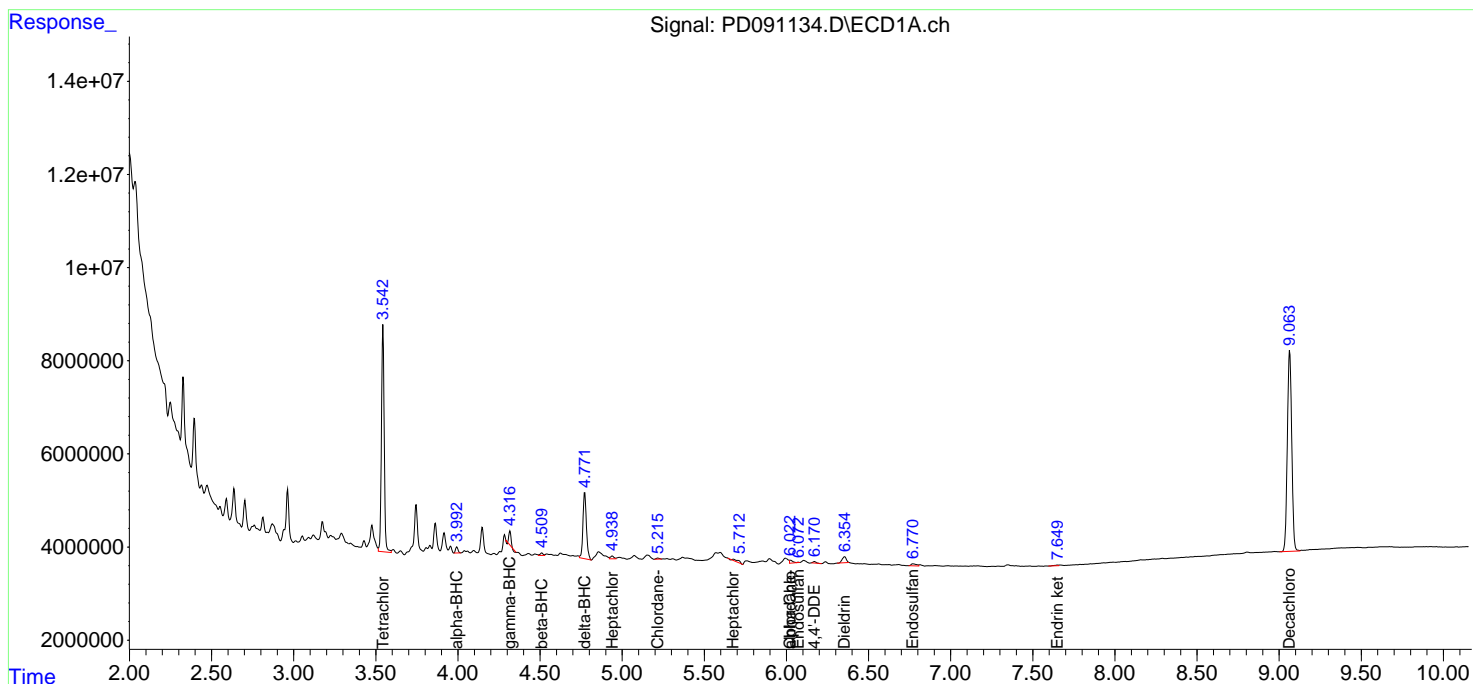
(f)=RT Delta > 1/2 Window (#)=Amounts differ by > 25% (m)=manual int.

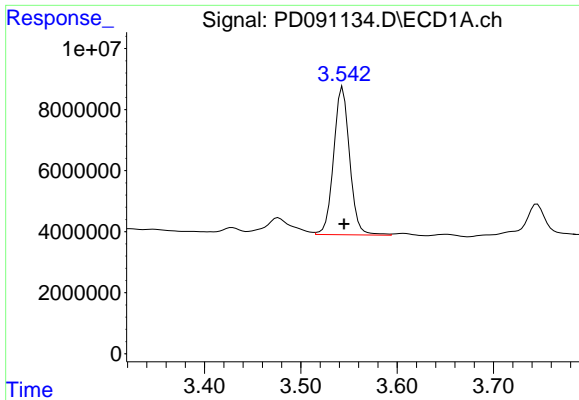
Data Path : Z:\pestpcbsrv\HPCHEM1\ECD\_D\Data\PD111225\  
 Data File : PD091134.D  
 Signal(s) : Signal #1: ECD1A.ch Signal #2: ECD2B.ch  
 Acq On : 12 Nov 2025 22:29  
 Operator : AR\AJ  
 Sample : Q3604-01  
 Misc :  
 ALS Vial : 64 Sample Multiplier: 1

Instrument :  
 ECD\_D  
 ClientSampleId :  
 S-1

Integration File signal 1: autoint1.e  
 Integration File signal 2: autoint2.e  
 Quant Time: Nov 13 12:42:53 2025  
 Quant Method : Z:\pestpcbsrv\HPCHEM1\ECD\_D\Method\PD101725.M  
 Quant Title : GC Extractables  
 QLast Update : Fri Oct 17 17:43:28 2025  
 Response via : Initial Calibration  
 Integrator: ChemStation

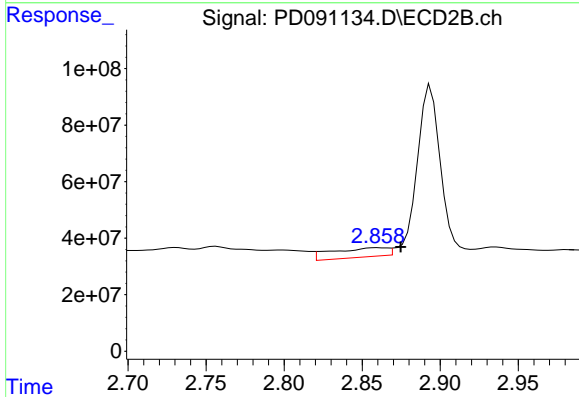
Volume Inj. : 1 µl  
 Signal #1 Phase : ZB-MR1 Signal #2 Phase: ZB-MR2  
 Signal #1 Info : 30M x 0.32mm x0.5 Signal #2 Info : 30M x 0.32mm x 0.25µm



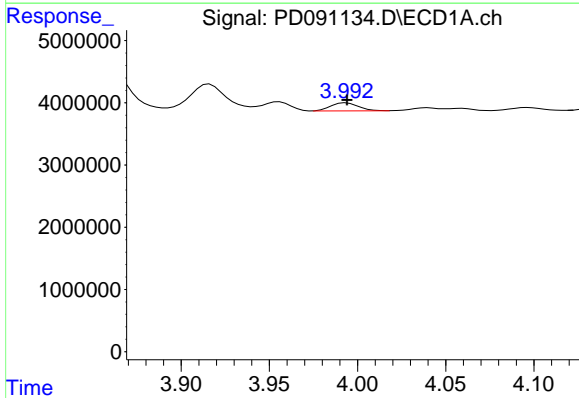


#1 Tetrachloro-m-xylene  
 R.T.: 3.544 min  
 Delta R.T.: -0.001 min  
 Response: 56003222  
 Conc: 17.98 ng/ml

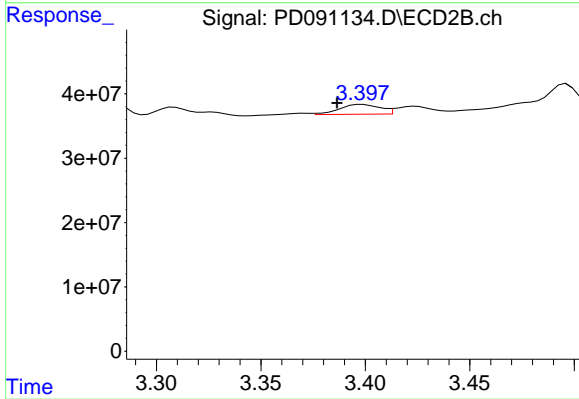
Instrument :  
 ECD\_D  
 ClientSampleId :  
 S-1



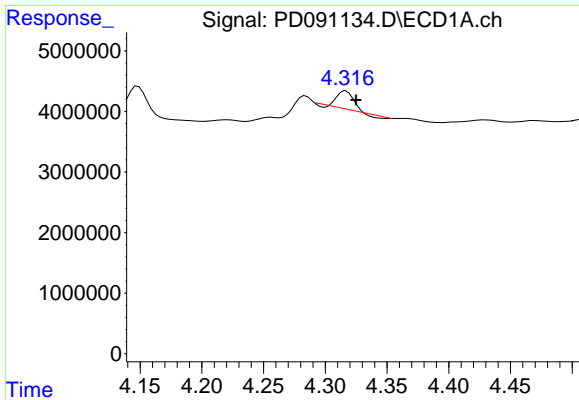
#1 Tetrachloro-m-xylene  
 R.T.: 2.860 min  
 Delta R.T.: -0.015 min  
 Response: 81296339  
 Conc: 2.73 ng/ml



#2 alpha-BHC  
 R.T.: 3.994 min  
 Delta R.T.: 0.000 min  
 Response: 1395127  
 Conc: 0.19 ng/ml

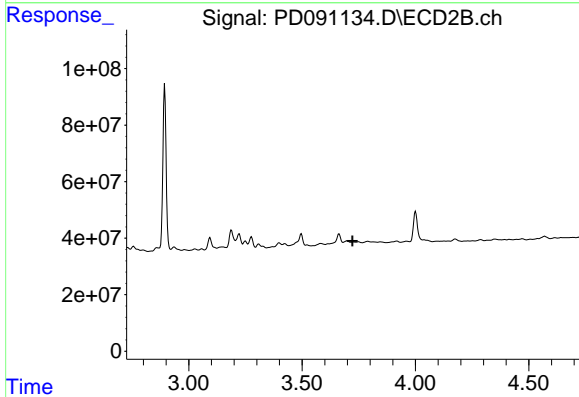


#2 alpha-BHC  
 R.T.: 3.399 min  
 Delta R.T.: 0.012 min  
 Response: 20711316  
 Conc: 0.41 ng/ml

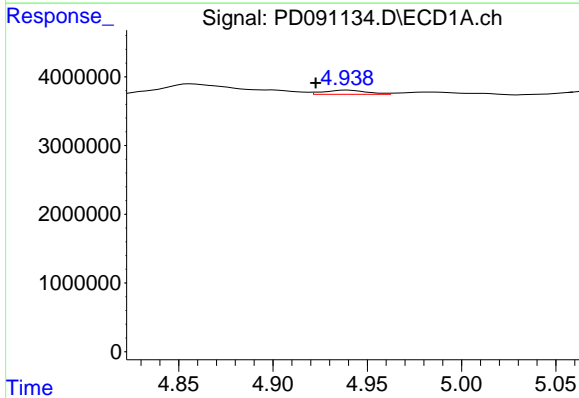


#3 gamma-BHC (Lindane)  
 R.T.: 4.317 min  
 Delta R.T.: -0.008 min  
 Response: 2343202  
 Conc: 0.34 ng/ml

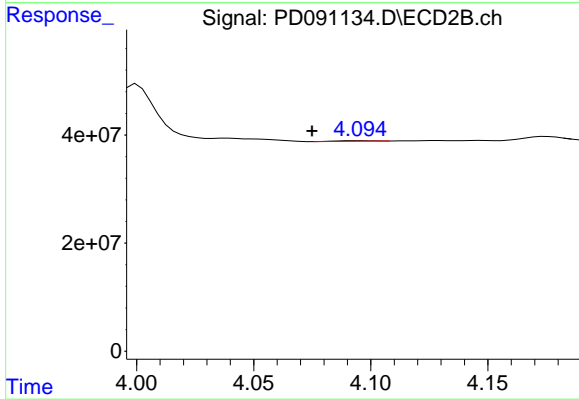
Instrument :  
 ECD\_D  
 ClientSampleId :  
 S-1



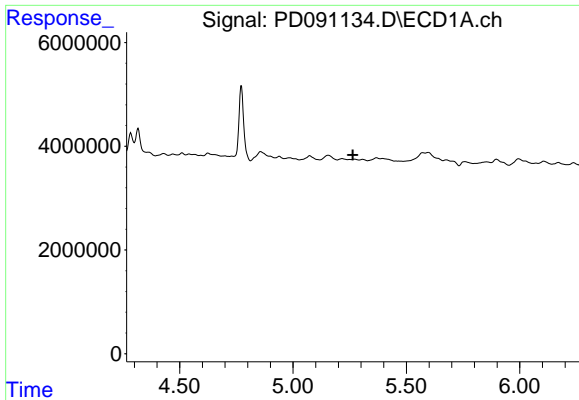
#3 gamma-BHC (Lindane)  
 R.T.: 3.728 min  
 Delta R.T.: 0.006 min  
 Response: -1950705  
 Conc: N.D.



#4 Heptachlor  
 R.T.: 4.939 min  
 Delta R.T.: 0.017 min  
 Response: 946968  
 Conc: 0.17 ng/ml

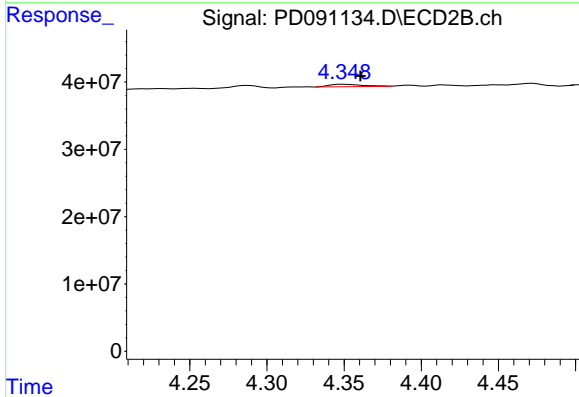


#4 Heptachlor  
 R.T.: 4.095 min  
 Delta R.T.: 0.020 min  
 Response: 1215644  
 Conc: 0.03 ng/ml

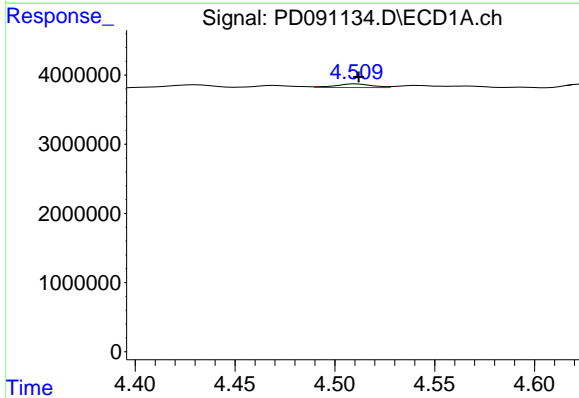


#5 Aldrin  
 R.T.: 0.000 min  
 Exp R.T.: 5.264 min  
 Response: 0  
 Conc: N.D.

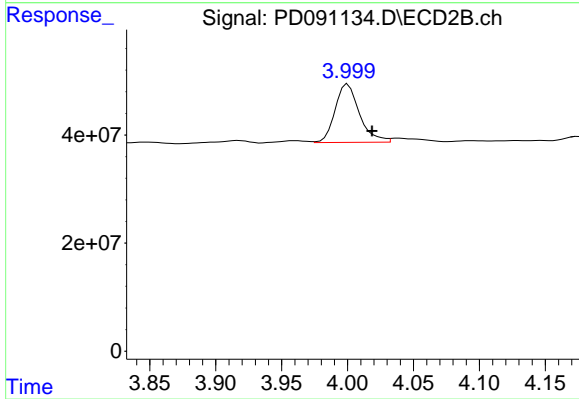
Instrument :  
 ECD\_D  
 ClientSampleId :  
 S-1



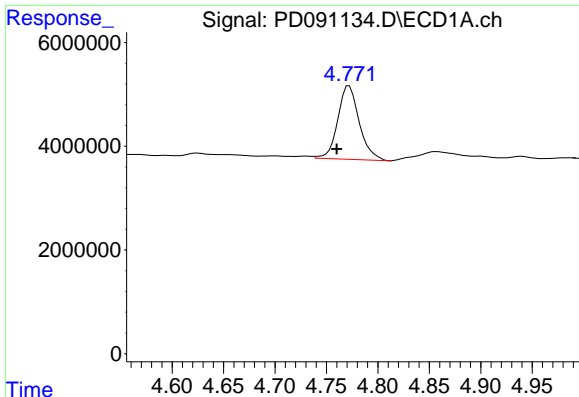
#5 Aldrin  
 R.T.: 4.350 min  
 Delta R.T.: -0.011 min  
 Response: 5344490  
 Conc: 0.12 ng/ml



#6 beta-BHC  
 R.T.: 4.511 min  
 Delta R.T.: -0.001 min  
 Response: 671952  
 Conc: 0.26 ng/ml



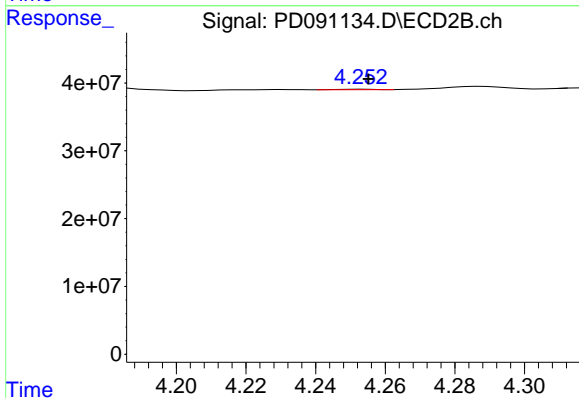
#6 beta-BHC  
 R.T.: 4.000 min  
 Delta R.T.: -0.018 min  
 Response: 139107172  
 Conc: 7.02 ng/ml



#7 delta-BHC

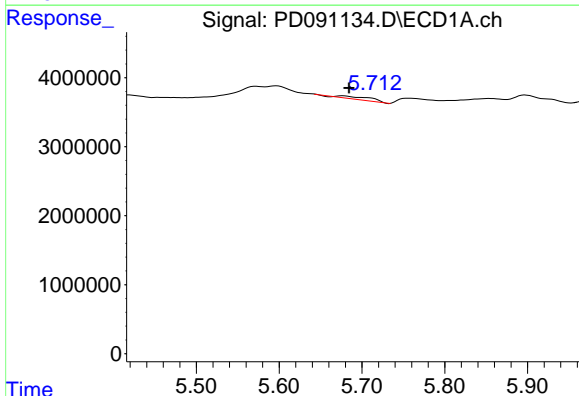
R.T.: 4.772 min  
 Delta R.T.: 0.012 min  
 Response: 20622042  
 Conc: 3.05 ng/ml

Instrument :  
 ECD\_D  
 ClientSampleId :  
 S-1



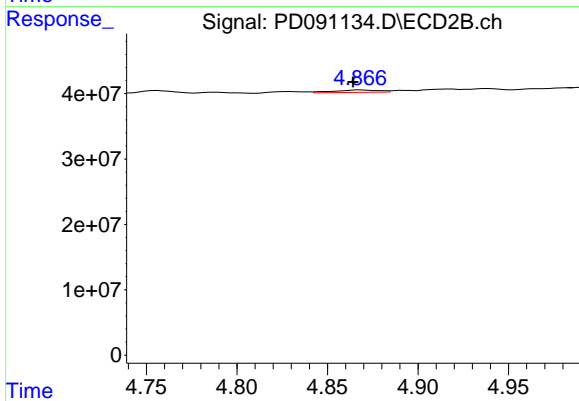
#7 delta-BHC

R.T.: 4.254 min  
 Delta R.T.: -0.002 min  
 Response: 463340  
 Conc: 0.01 ng/ml



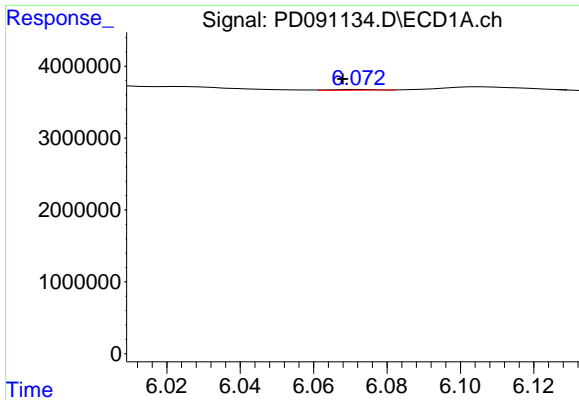
#8 Heptachlor epoxide

R.T.: 5.676 min  
 Delta R.T.: -0.008 min  
 Response: 1183342  
 Conc: 0.20 ng/ml



#8 Heptachlor epoxide

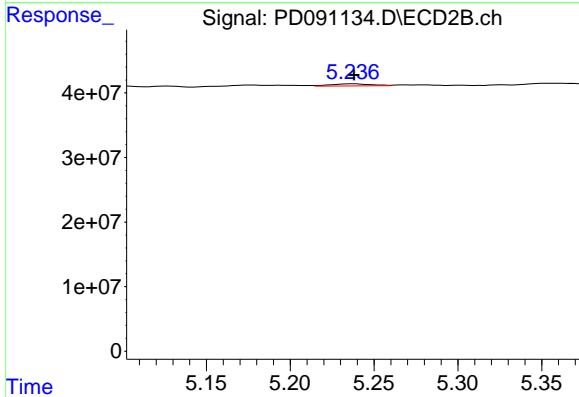
R.T.: 4.868 min  
 Delta R.T.: 0.004 min  
 Response: 6179351  
 Conc: 0.14 ng/ml



#9 Endosulfan I

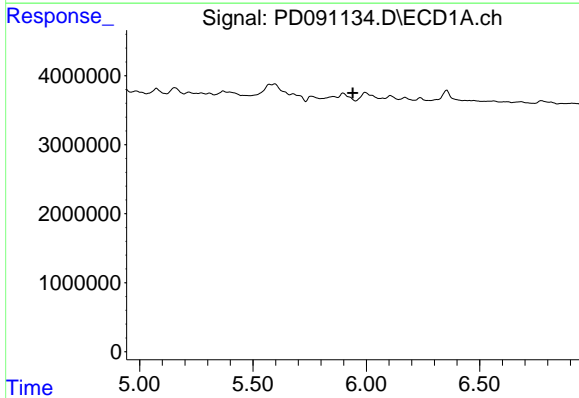
R.T.: 6.073 min  
 Delta R.T.: 0.005 min  
 Response: 76348  
 Conc: 0.01 ng/ml

Instrument :  
 ECD\_D  
 ClientSampleId :  
 S-1



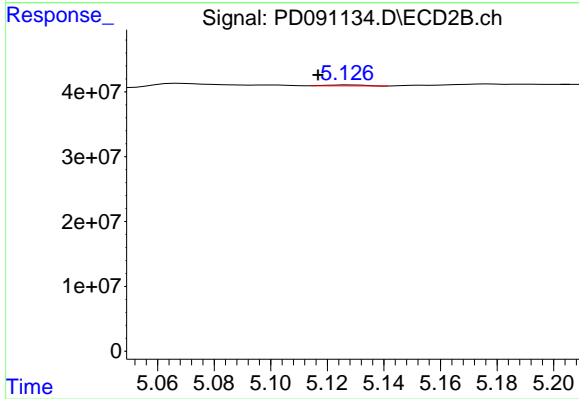
#9 Endosulfan I

R.T.: 5.238 min  
 Delta R.T.: 0.000 min  
 Response: 5429807  
 Conc: 0.14 ng/ml



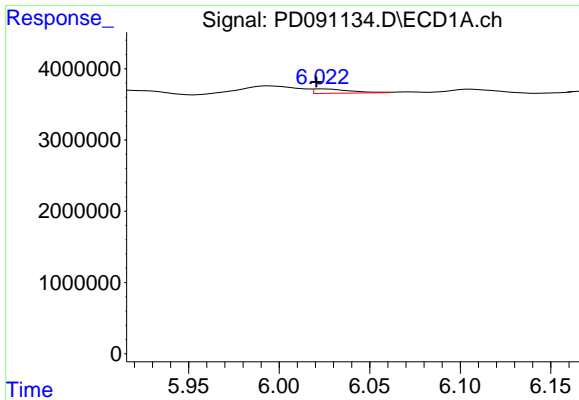
#10 gamma-Chlordane

R.T.: 0.000 min  
 Exp R.T. : 5.940 min  
 Response: 0  
 Conc: N.D.



#10 gamma-Chlordane

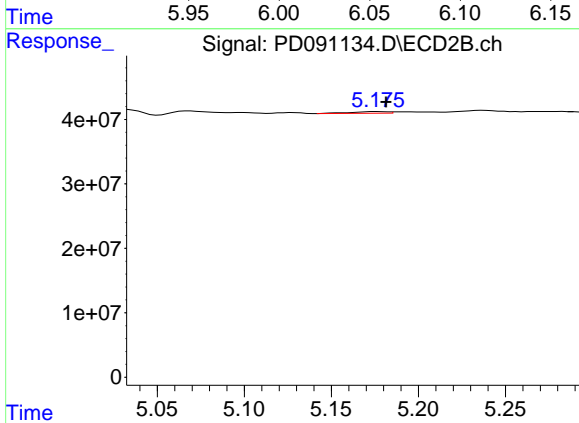
R.T.: 5.128 min  
 Delta R.T.: 0.011 min  
 Response: 1261950  
 Conc: 0.03 ng/ml



#11 alpha-Chlordane

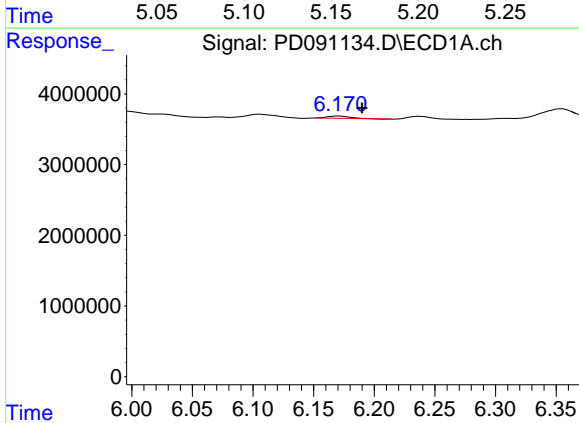
R.T.: 6.024 min  
 Delta R.T.: 0.004 min  
 Response: 870877  
 Conc: 0.14 ng/ml

Instrument : ECD\_D  
 ClientSampleId : S-1



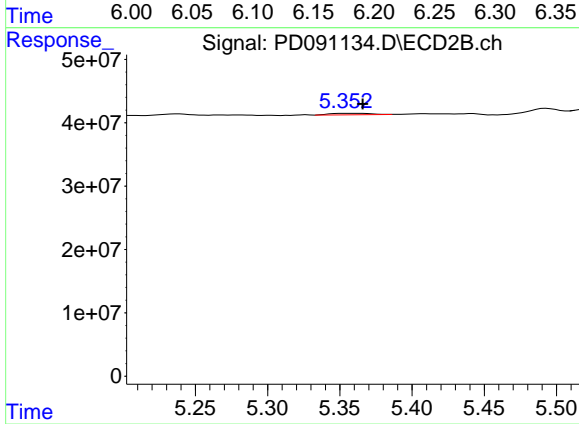
#11 alpha-Chlordane

R.T.: 5.177 min  
 Delta R.T.: -0.005 min  
 Response: 3778941  
 Conc: 0.09 ng/ml



#12 4,4'-DDE

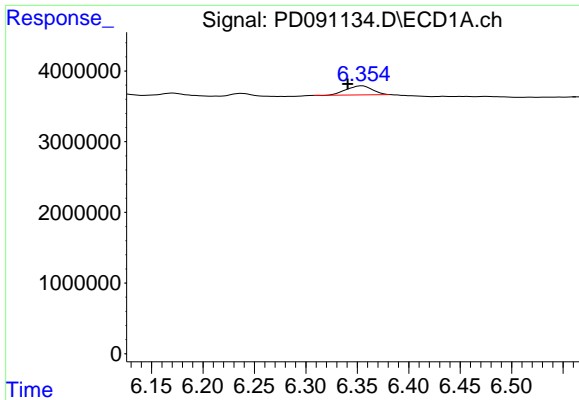
R.T.: 6.171 min  
 Delta R.T.: -0.019 min  
 Response: 425456  
 Conc: 0.08 ng/ml



#12 4,4'-DDE

R.T.: 5.354 min  
 Delta R.T.: -0.012 min  
 Response: 4858817  
 Conc: 0.11 ng/ml

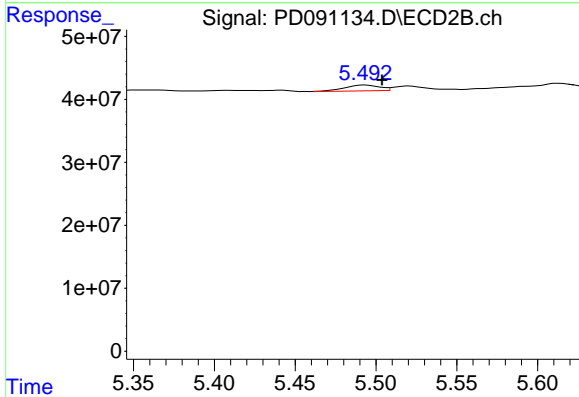




#13 Dieldrin

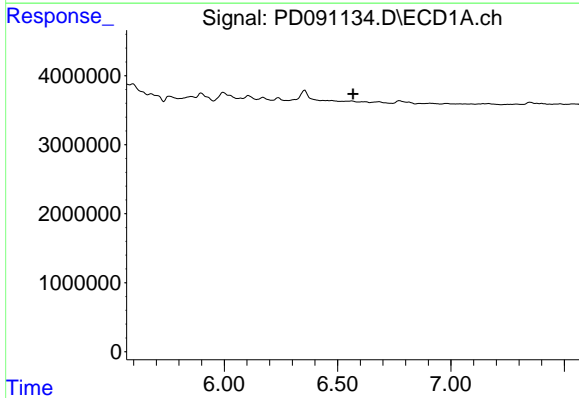
R.T.: 6.355 min  
 Delta R.T.: 0.014 min  
 Response: 2261829  
 Conc: 0.39 ng/ml

Instrument :  
 ECD\_D  
 ClientSampleId :  
 S-1



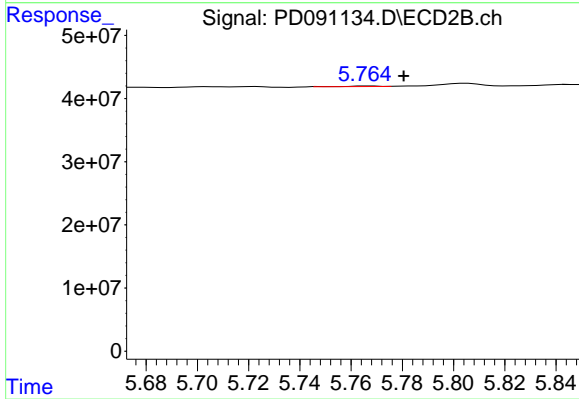
#13 Dieldrin

R.T.: 5.493 min  
 Delta R.T.: -0.011 min  
 Response: 13742702  
 Conc: 0.31 ng/ml



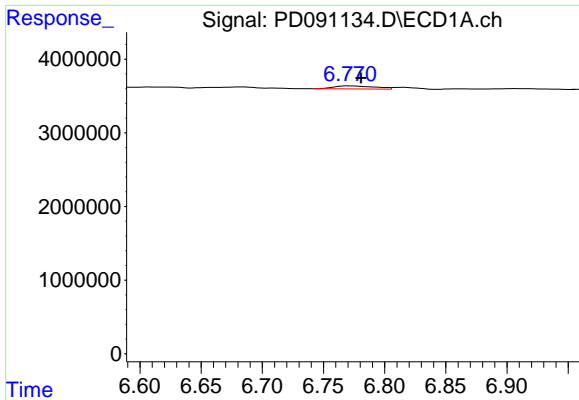
#14 Endrin

R.T.: 0.000 min  
 Exp R.T. : 6.568 min  
 Response: 0  
 Conc: N.D.



#14 Endrin

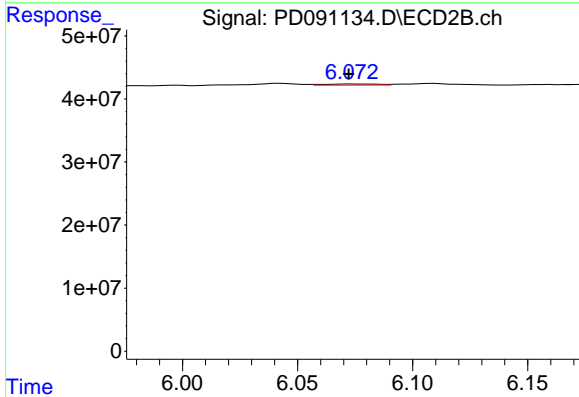
R.T.: 5.767 min  
 Delta R.T.: -0.013 min  
 Response: 548514  
 Conc: 0.01 ng/ml



#15 Endosulfan II

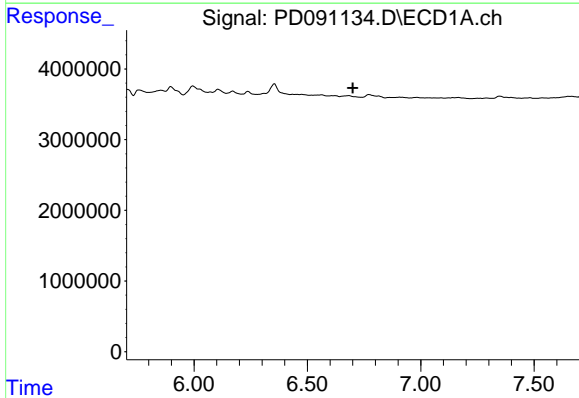
R.T.: 6.771 min  
 Delta R.T.: -0.010 min  
 Response: 965249  
 Conc: 0.19 ng/ml

Instrument :  
 ECD\_D  
 ClientSampleId :  
 S-1



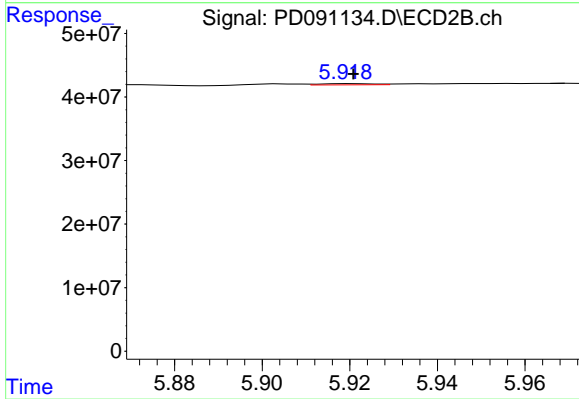
#15 Endosulfan II

R.T.: 6.075 min  
 Delta R.T.: 0.003 min  
 Response: 3005508  
 Conc: 0.08 ng/ml



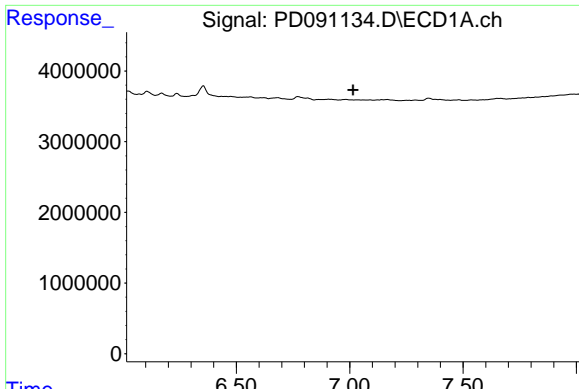
#16 4,4'-DDD

R.T.: 0.000 min  
 Exp R.T. : 6.700 min  
 Response: 0  
 Conc: N.D.



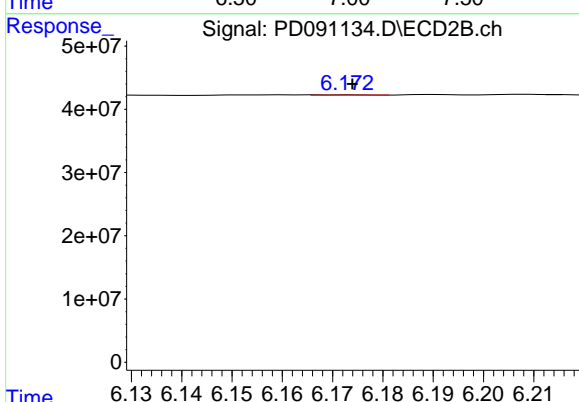
#16 4,4'-DDD

R.T.: 5.920 min  
 Delta R.T.: 0.000 min  
 Response: 1552763  
 Conc: 0.04 ng/ml

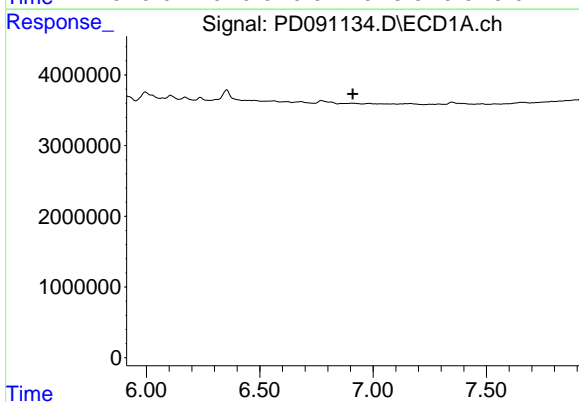


#17 4,4'-DDT  
 R.T.: 0.000 min  
 Exp R.T. : 7.015 min  
 Response: 0  
 Conc: N.D.

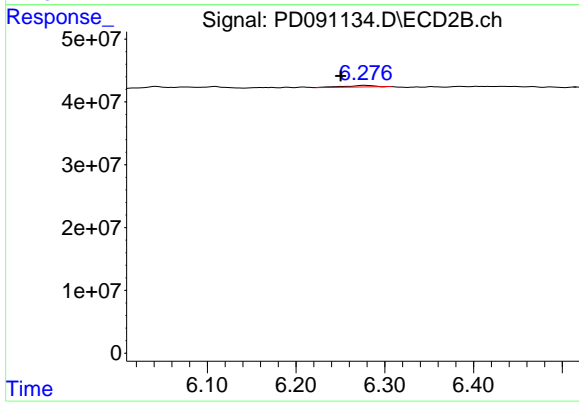
Instrument : ECD\_D  
 ClientSampleId : S-1



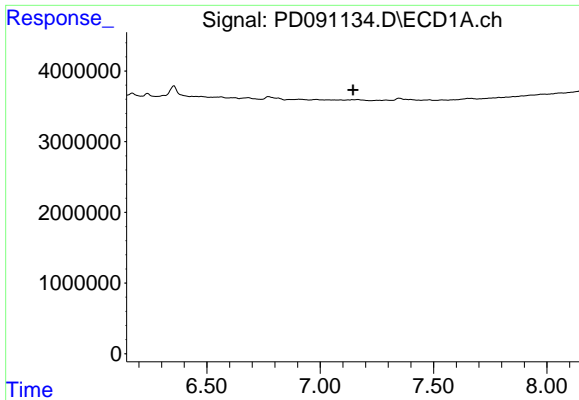
#17 4,4'-DDT  
 R.T.: 6.173 min  
 Delta R.T.: 0.000 min  
 Response: 492189  
 Conc: 0.01 ng/ml



#18 Endrin aldehyde  
 R.T.: 0.000 min  
 Exp R.T. : 6.910 min  
 Response: 0  
 Conc: N.D.



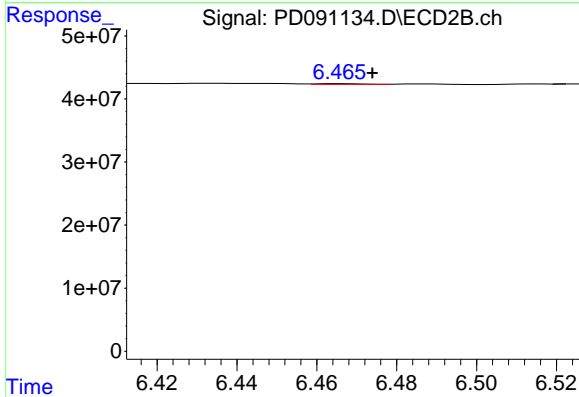
#18 Endrin aldehyde  
 R.T.: 6.278 min  
 Delta R.T.: 0.027 min  
 Response: 5882699  
 Conc: 0.21 ng/ml



#19 Endosulfan Sulfate

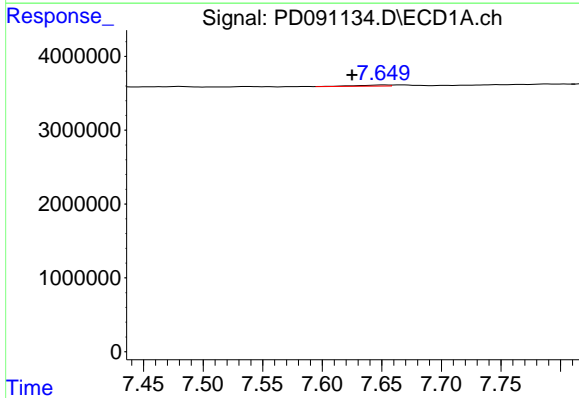
R.T.: 0.000 min  
 Exp R.T.: 7.145 min  
 Response: 0  
 Conc: N.D.

Instrument :  
 ECD\_D  
 ClientSampleId :  
 S-1



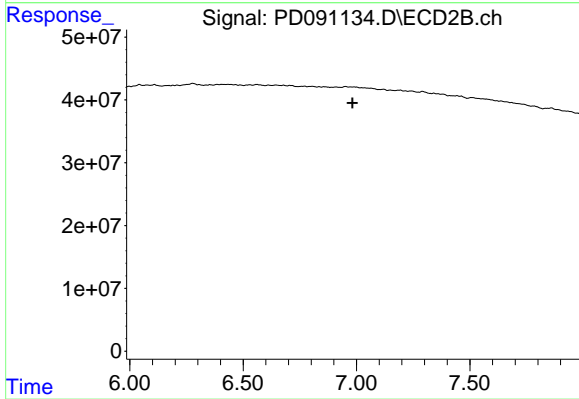
#19 Endosulfan Sulfate

R.T.: 6.466 min  
 Delta R.T.: -0.008 min  
 Response: 1066476  
 Conc: 0.03 ng/ml



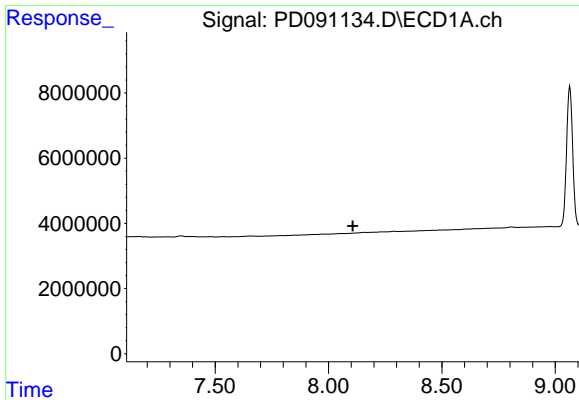
#21 Endrin ketone

R.T.: 7.651 min  
 Delta R.T.: 0.026 min  
 Response: 283570  
 Conc: 0.06 ng/ml



#21 Endrin ketone

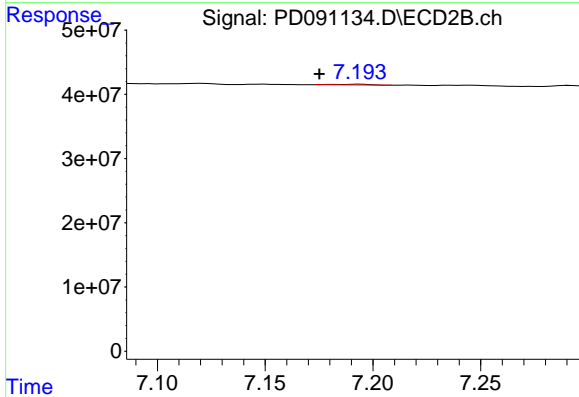
R.T.: 0.000 min  
 Exp R.T.: 6.983 min  
 Response: 0  
 Conc: N.D.



#22 Mirex

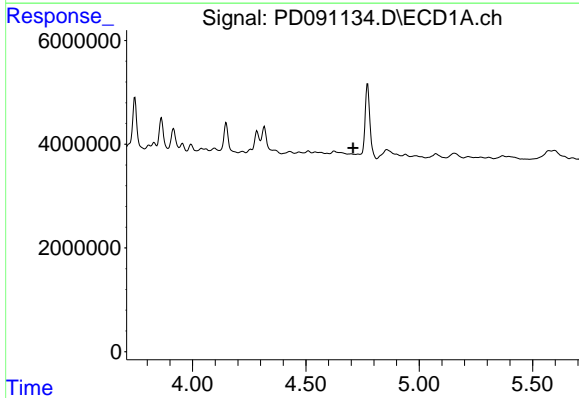
R.T.: 0.000 min  
 Exp R.T.: 8.107 min  
 Response: 0  
 Conc: N.D.

Instrument :  
 ECD\_D  
 ClientSampleId :  
 S-1



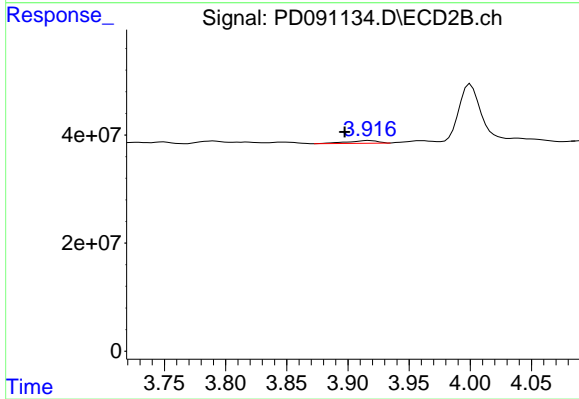
#22 Mirex

R.T.: 7.194 min  
 Delta R.T.: 0.019 min  
 Response: 1378456  
 Conc: 0.05 ng/ml



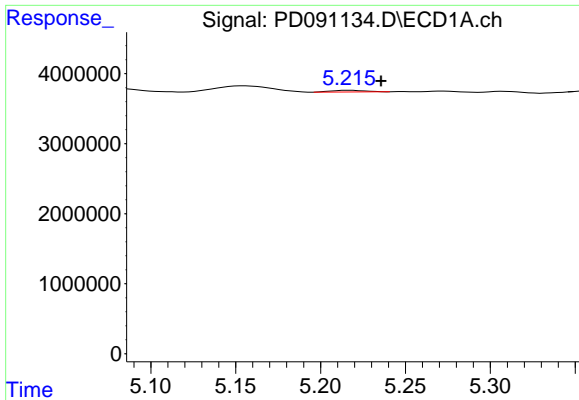
#23 Chlordane-1

R.T.: 0.000 min  
 Exp R.T.: 4.709 min  
 Response: 0  
 Conc: N.D.



#23 Chlordane-1

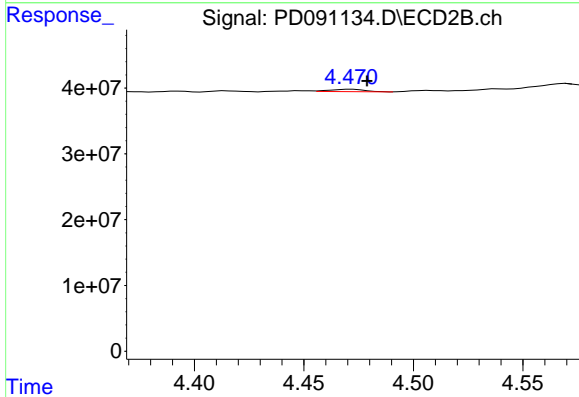
R.T.: 3.917 min  
 Delta R.T.: 0.020 min  
 Response: 8449858  
 Conc: 6.78 ng/ml



#24 Chlordane-2

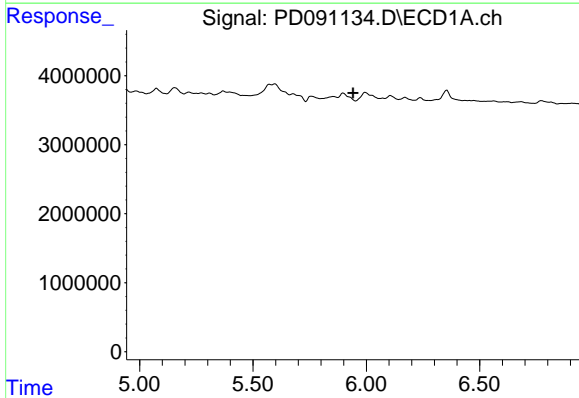
R.T.: 5.217 min  
 Delta R.T.: -0.019 min  
 Response: 326056  
 Conc: 1.69 ng/ml

Instrument : ECD\_D  
 ClientSampleId : S-1



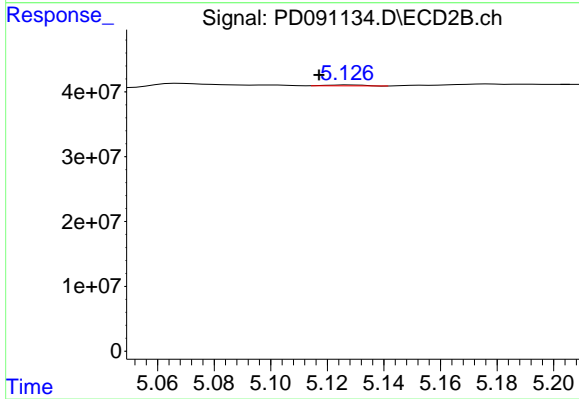
#24 Chlordane-2

R.T.: 4.472 min  
 Delta R.T.: -0.007 min  
 Response: 4056435  
 Conc: 3.11 ng/ml



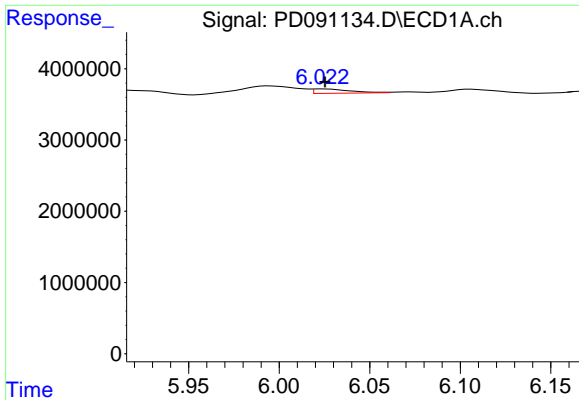
#25 Chlordane-3

R.T.: 0.000 min  
 Exp R.T. : 5.941 min  
 Response: 0  
 Conc: N.D.



#25 Chlordane-3

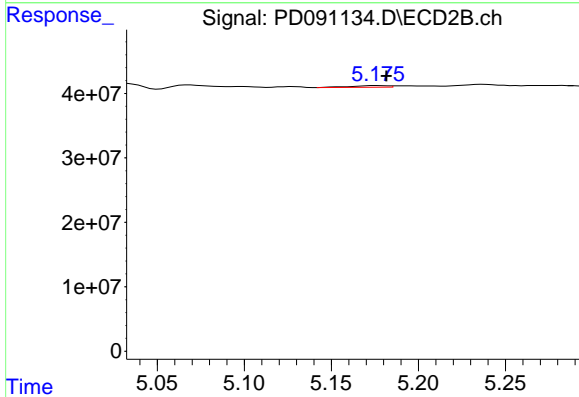
R.T.: 5.128 min  
 Delta R.T.: 0.011 min  
 Response: 1261950  
 Conc: 0.32 ng/ml



#26 Chlordane-4

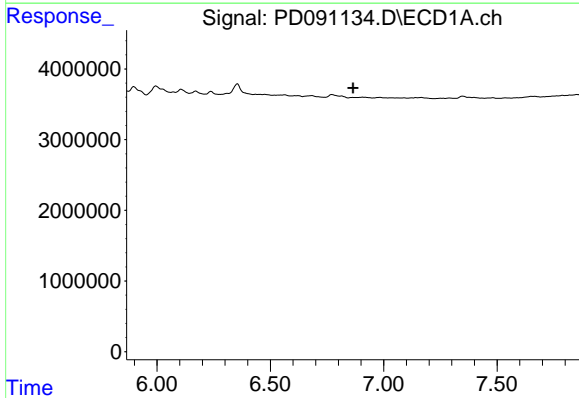
R.T.: 6.024 min  
 Delta R.T.: -0.001 min  
 Response: 870877  
 Conc: 0.90 ng/ml

Instrument :  
 ECD\_D  
 ClientSampleId :  
 S-1



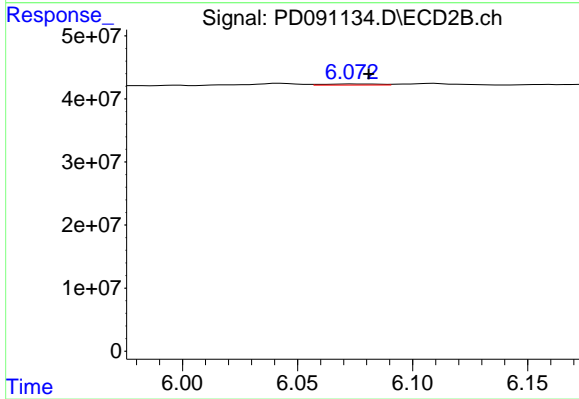
#26 Chlordane-4

R.T.: 5.177 min  
 Delta R.T.: -0.005 min  
 Response: 3778941  
 Conc: 1.13 ng/ml



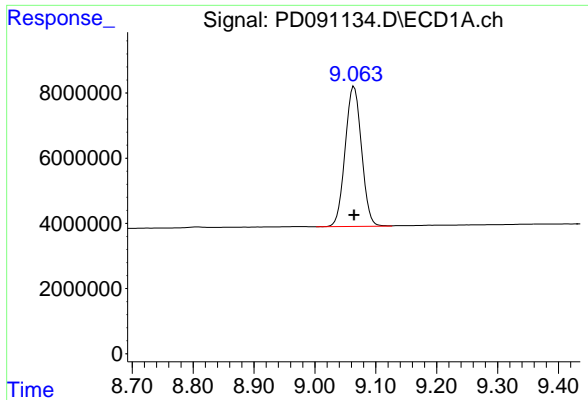
#27 Chlordane-5

R.T.: 0.000 min  
 Exp R.T. : 6.866 min  
 Response: 0  
 Conc: N.D.



#27 Chlordane-5

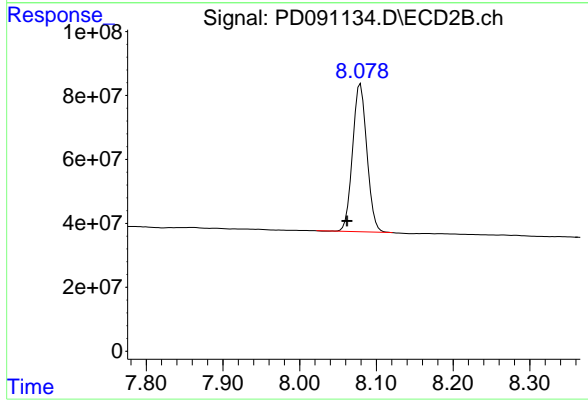
R.T.: 6.075 min  
 Delta R.T.: -0.006 min  
 Response: 3005508  
 Conc: 2.04 ng/ml



#28 Decachlorobiphenyl

R.T.: 9.064 min  
 Delta R.T.: 0.000 min  
 Response: 80164738  
 Conc: 17.14 ng/ml

Instrument :  
 ECD\_D  
 ClientSampleId :  
 S-1



#28 Decachlorobiphenyl

R.T.: 8.079 min  
 Delta R.T.: 0.018 min  
 Response: 605133035  
 Conc: 19.98 ng/ml