

Data Path : Z:\pestpcbsrv\HPCHEM1\ECD\_D\Data\PD111225\  
 Data File : PD091135.D  
 Signal(s) : Signal #1: ECD1A.ch Signal #2: ECD2B.ch  
 Acq On : 12 Nov 2025 22:43  
 Operator : AR\AJ  
 Sample : Q3604-01MS  
 Misc :  
 ALS Vial : 65 Sample Multiplier: 1

Instrument :  
 ECD\_D  
 ClientSampleId :  
 S-1MS

Integration File signal 1: autoint1.e  
 Integration File signal 2: autoint2.e  
 Quant Time: Nov 13 12:43:18 2025  
 Quant Method : Z:\pestpcbsrv\HPCHEM1\ECD\_D\Method\PD101725.M  
 Quant Title : GC Extractables  
 QLast Update : Fri Oct 17 17:43:28 2025  
 Response via : Initial Calibration  
 Integrator: ChemStation

Volume Inj. : 1 µl  
 Signal #1 Phase : ZB-MR2 Signal #2 Phase: ZB-MR2  
 Signal #1 Info : 30M x 0.32mm x0.5 Signal #2 Info : 30M x 0.32mm x 0.25µm

Compound	RT#1	RT#2	Resp#1	Resp#2	ng/ml	ng/ml
System Monitoring Compounds						
1) SA Tetrachlo...	3.544	2.874	57542195	591.1E6	18.478	19.850
28) SA Decachlor...	9.065	8.060	90338257	691.1E6	19.311	22.817
Target Compounds						
2) A alpha-BHC	3.993	3.385	358.3E6	2613.5E6	49.923	51.149
3) MA gamma-BHC...	4.324	3.721	338.5E6	2406.0E6	49.793	50.921
4) MA Heptachlor	4.922	4.073	325.3E6	2321.5E6	58.205	52.049
5) MB Aldrin	5.263	4.358	317.8E6	2335.1E6	48.533	50.414
6) B beta-BHC	4.511	4.018	126.9E6	1013.2E6	48.429	51.095
7) B delta-BHC	4.760	4.253	351.5E6	2479.0E6	51.980	51.953
8) B Heptachlo...	5.683	4.862	289.9E6	2191.1E6	50.085	51.387
9) A Endosulfan I	6.068	5.236	274.9E6	2090.9E6	49.651	53.082
10) B gamma-Chl...	5.939	5.115	291.6E6	2359.2E6	49.162	52.487
11) B alpha-Chl...	6.020	5.179	292.7E6	2267.3E6	47.353	52.559
12) B 4,4'-DDE	6.189	5.364	263.7E6	2316.5E6	49.510	52.841
13) MA Dieldrin	6.340	5.502	296.7E6	2387.1E6	50.876	54.027
14) MA Endrin	6.567	5.779	242.3E6	2109.2E6	48.918	52.087
15) B Endosulfa...	6.781	6.071	249.9E6	2061.9E6	49.989	54.904
16) A 4,4'-DDD	6.699	5.919	213.1E6	2050.0E6	52.572	56.261
17) MA 4,4'-DDT	7.015	6.172	208.8E6	1945.8E6	50.807	55.478
18) B Endrin al...	6.910	6.248	184.9E6	1550.8E6	50.481	55.999
19) B Endosulfa...	7.144	6.472	233.0E6	1992.2E6	50.228	55.577
20) A Methoxychlor	7.488	6.743	106.0E6	976.2E6	49.887	56.015
21) B Endrin ke...	7.625	6.981	251.8E6	2227.6E6	51.825	59.058
22) Mirex	8.108	7.173	152.0E6	1404.6E6	47.489	54.673
23) Chlordane-1	0.000	3.894	0	6459556	N.D.	5.183 #
24) Chlordane-2	5.219	4.496	216956	12317240	1.123	9.442 #
25) Chlordane-3	5.939	5.115	291.6E6	2359.2E6	382.283	606.242 #
26) Chlordane-4	6.020	5.179	292.7E6	2267.3E6	302.053	678.580 #
27) Chlordane-5	0.000	6.071	0	2061.9E6	N.D.	1396.944 #

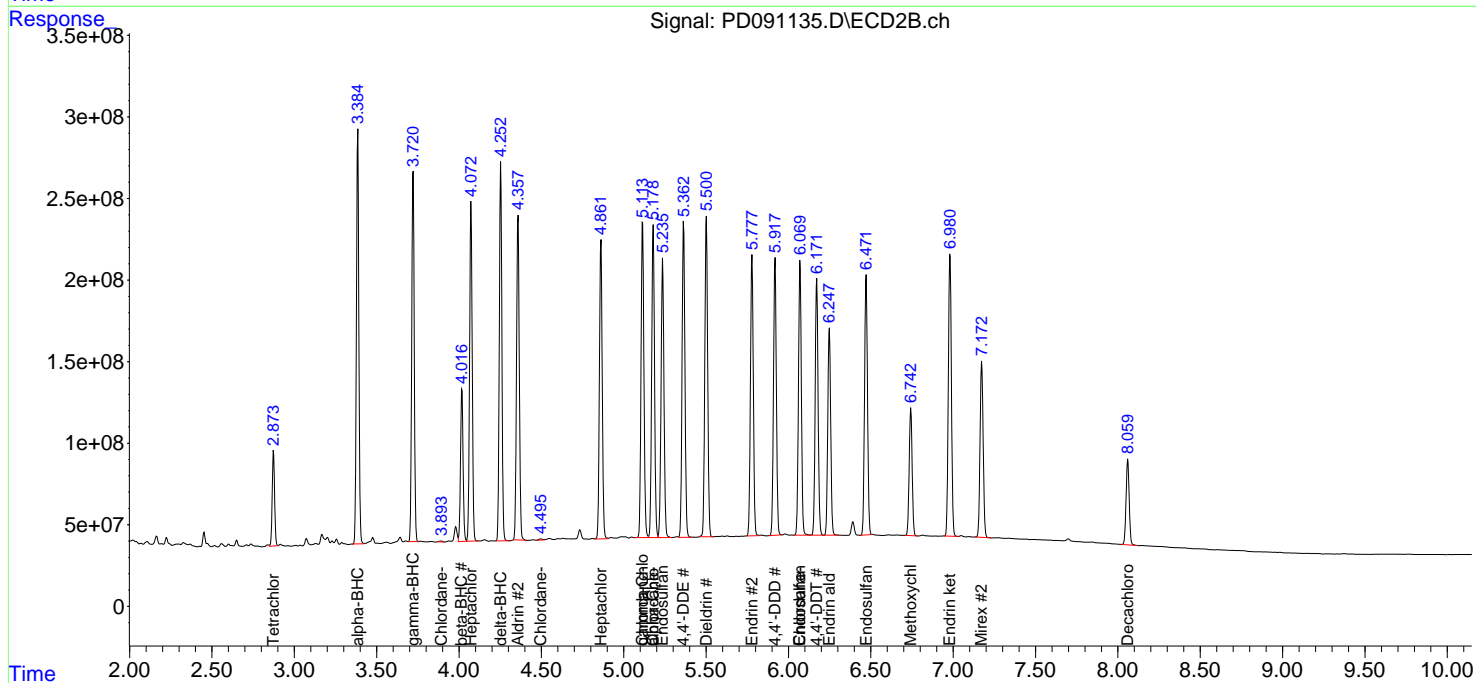
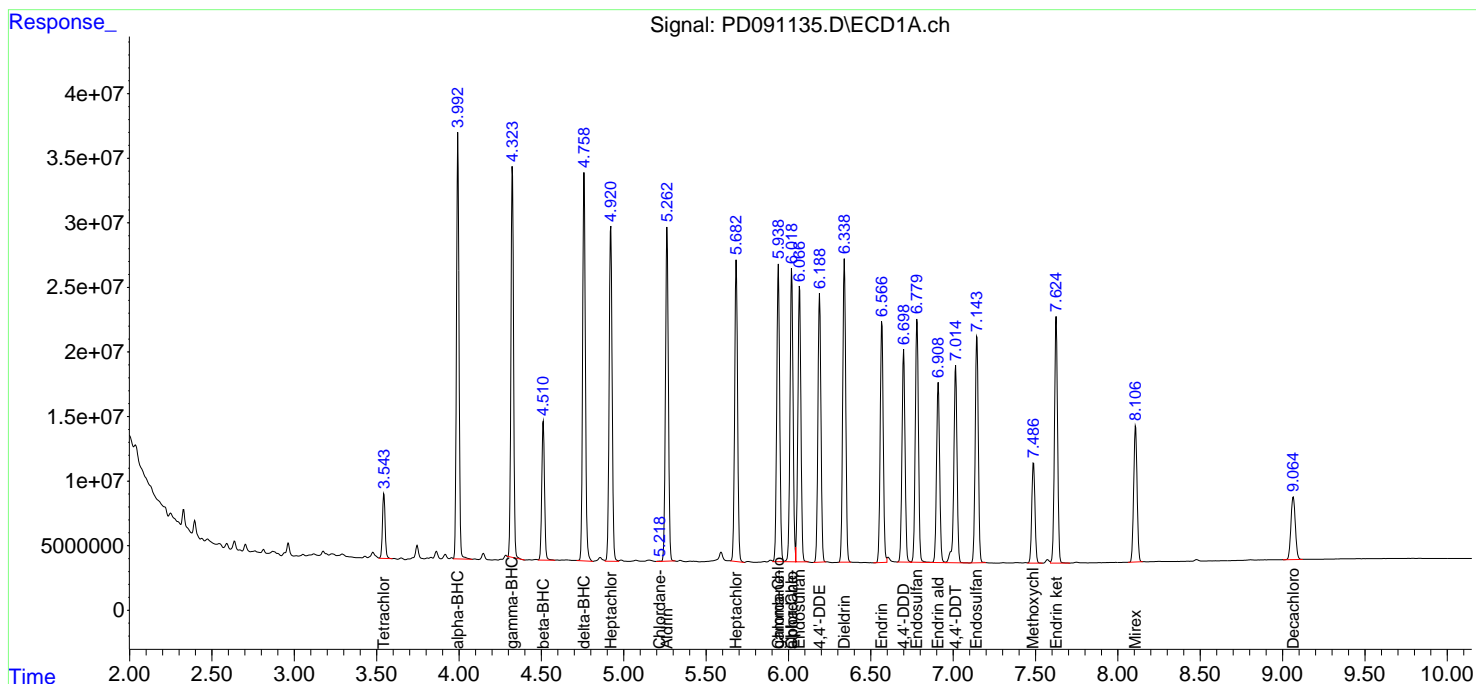
(f)=RT Delta > 1/2 Window (#)=Amounts differ by > 25% (m)=manual int.

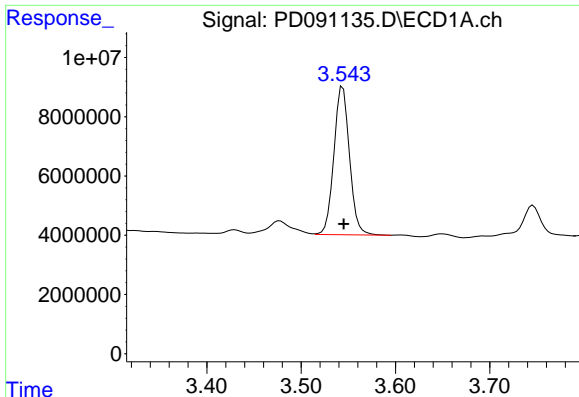
Data Path : Z:\pestpcbsrv\HPCHEM1\ECD\_D\Data\PD111225\  
 Data File : PD091135.D  
 Signal(s) : Signal #1: ECD1A.ch Signal #2: ECD2B.ch  
 Acq On : 12 Nov 2025 22:43  
 Operator : AR\AJ  
 Sample : Q3604-01MS  
 Misc :  
 ALS Vial : 65 Sample Multiplier: 1

Instrument :  
 ECD\_D  
 ClientSampleId :  
 S-1MS

Integration File signal 1: autoint1.e  
 Integration File signal 2: autoint2.e  
 Quant Time: Nov 13 12:43:18 2025  
 Quant Method : Z:\pestpcbsrv\HPCHEM1\ECD\_D\Method\PD101725.M  
 Quant Title : GC Extractables  
 QLast Update : Fri Oct 17 17:43:28 2025  
 Response via : Initial Calibration  
 Integrator: ChemStation

Volume Inj. : 1 µl  
 Signal #1 Phase : ZB-MR1 Signal #2 Phase: ZB-MR2  
 Signal #1 Info : 30M x 0.32mm x0.5 Signal #2 Info : 30M x 0.32mm x 0.25µm

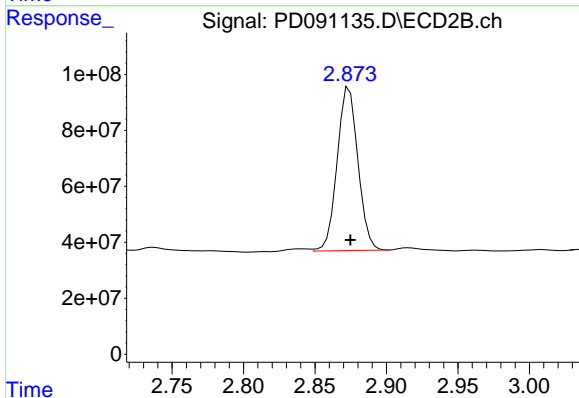




#1 Tetrachloro-m-xylene

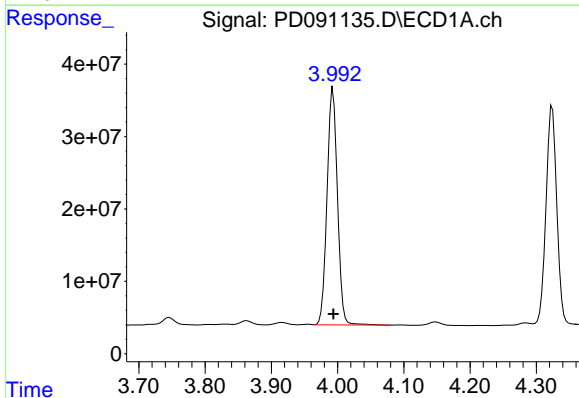
R.T.: 3.544 min  
 Delta R.T.: 0.000 min  
 Response: 57542195  
 Conc: 18.48 ng/ml

Instrument :  
 ECD\_D  
 ClientSampleId :  
 S-1MS



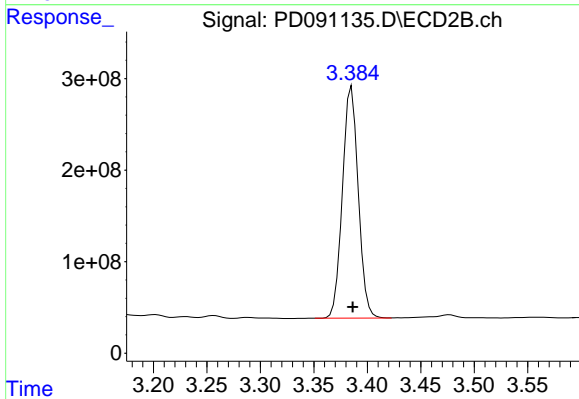
#1 Tetrachloro-m-xylene

R.T.: 2.874 min  
 Delta R.T.: 0.000 min  
 Response: 591081543  
 Conc: 19.85 ng/ml



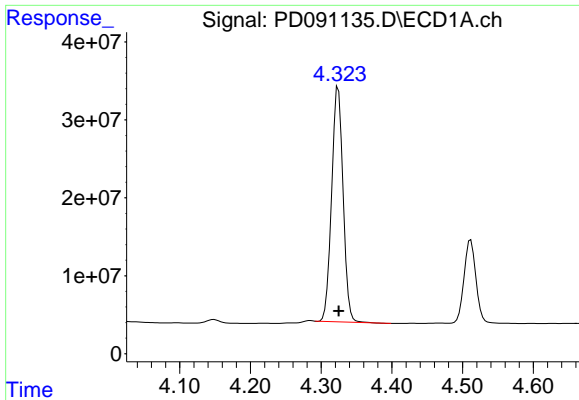
#2 alpha-BHC

R.T.: 3.993 min  
 Delta R.T.: 0.000 min  
 Response: 358307141  
 Conc: 49.92 ng/ml



#2 alpha-BHC

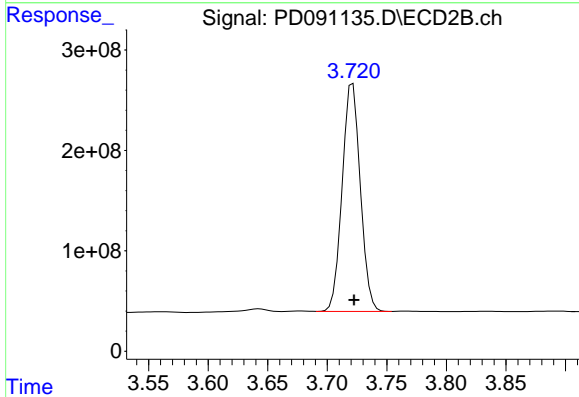
R.T.: 3.385 min  
 Delta R.T.: -0.001 min  
 Response: 2613476994  
 Conc: 51.15 ng/ml



#3 gamma-BHC (Lindane)

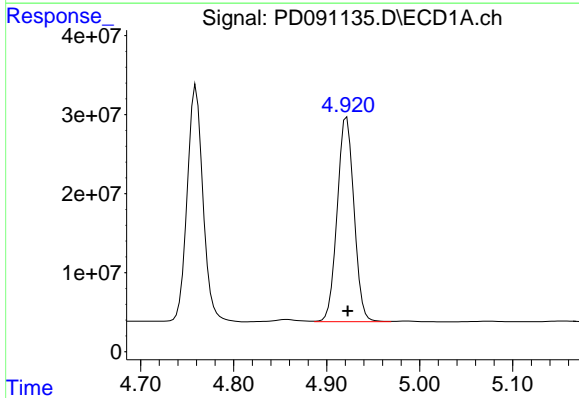
R.T.: 4.324 min  
 Delta R.T.: 0.000 min  
 Response: 338534802  
 Conc: 49.79 ng/ml

Instrument :  
 ECD\_D  
 ClientSampleId :  
 S-1MS



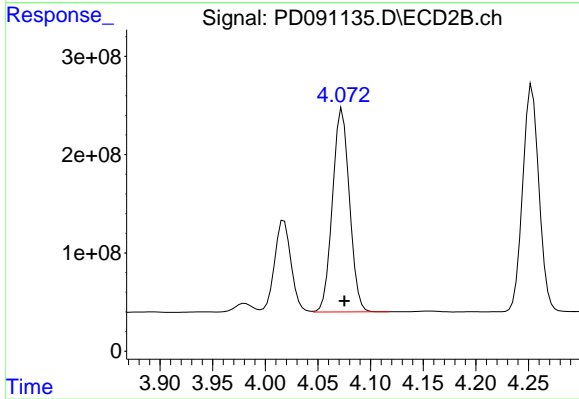
#3 gamma-BHC (Lindane)

R.T.: 3.721 min  
 Delta R.T.: -0.001 min  
 Response: 2405981372  
 Conc: 50.92 ng/ml



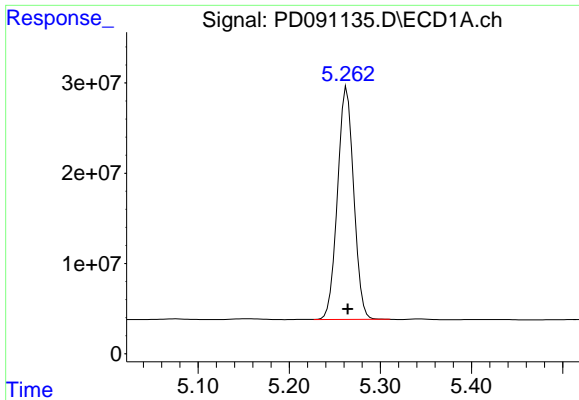
#4 Heptachlor

R.T.: 4.922 min  
 Delta R.T.: -0.001 min  
 Response: 325342637  
 Conc: 58.21 ng/ml



#4 Heptachlor

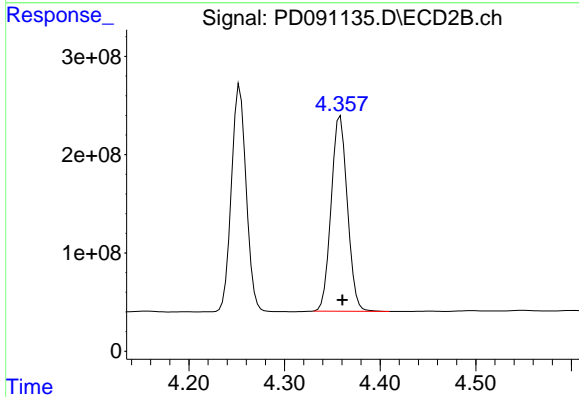
R.T.: 4.073 min  
 Delta R.T.: -0.002 min  
 Response: 2321532308  
 Conc: 52.05 ng/ml



#5 Aldrin

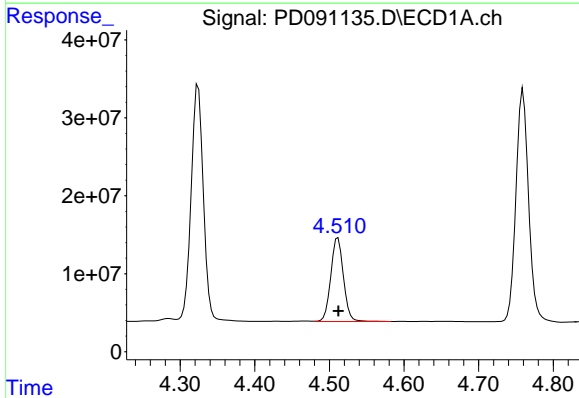
R.T.: 5.263 min  
 Delta R.T.: -0.001 min  
 Response: 317755711  
 Conc: 48.53 ng/ml

Instrument :  
 ECD\_D  
 ClientSampleId :  
 S-1MS



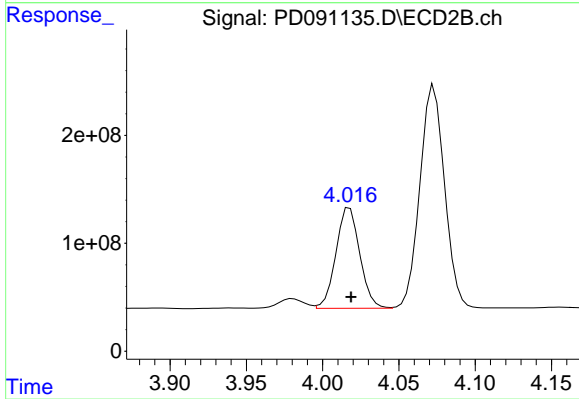
#5 Aldrin

R.T.: 4.358 min  
 Delta R.T.: -0.002 min  
 Response: 2335127210  
 Conc: 50.41 ng/ml



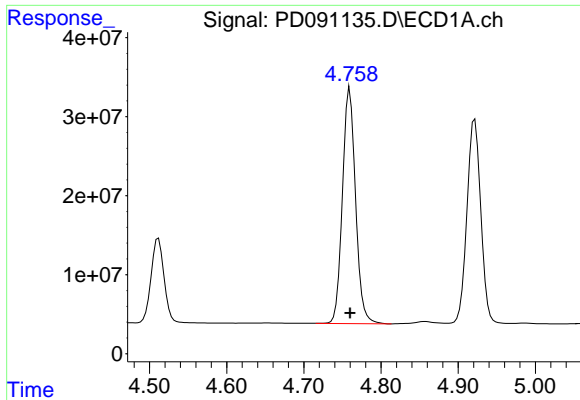
#6 beta-BHC

R.T.: 4.511 min  
 Delta R.T.: 0.000 min  
 Response: 126865796  
 Conc: 48.43 ng/ml



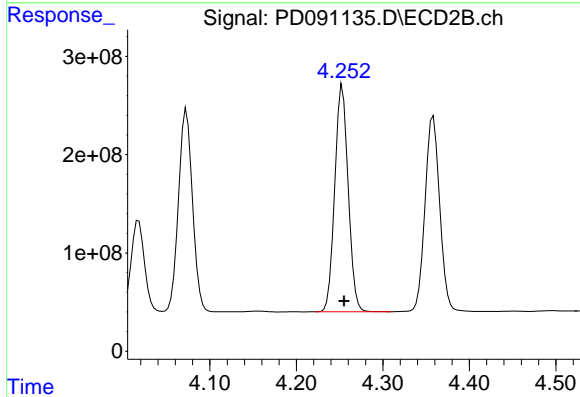
#6 beta-BHC

R.T.: 4.018 min  
 Delta R.T.: 0.000 min  
 Response: 1013191694  
 Conc: 51.10 ng/ml

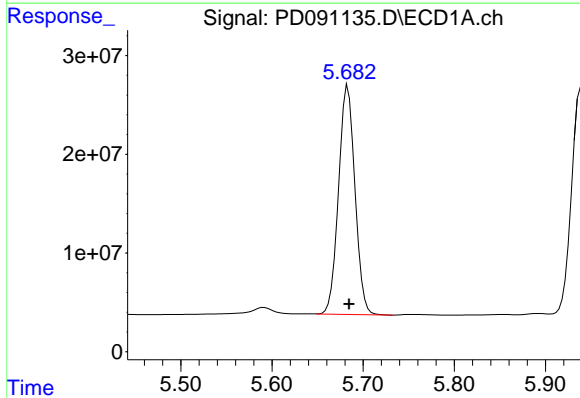


#7 delta-BHC  
 R.T.: 4.760 min  
 Delta R.T.: 0.000 min  
 Response: 351473852  
 Conc: 51.98 ng/ml

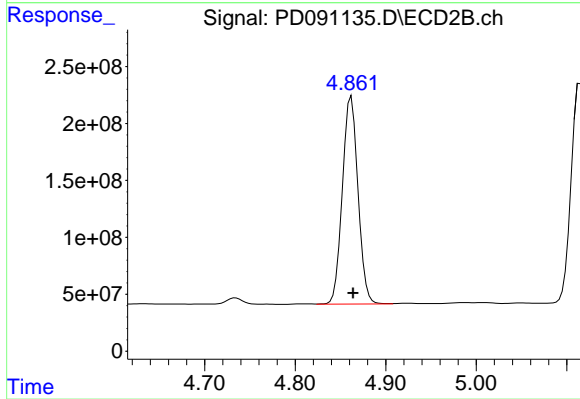
Instrument :  
 ECD\_D  
 ClientSampleId :  
 S-1MS



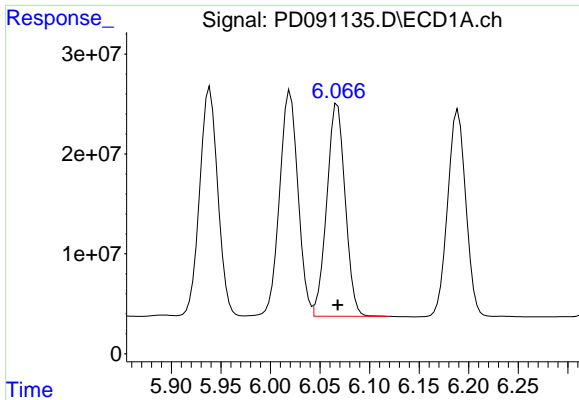
#7 delta-BHC  
 R.T.: 4.253 min  
 Delta R.T.: -0.002 min  
 Response: 2479045756  
 Conc: 51.95 ng/ml



#8 Heptachlor epoxide  
 R.T.: 5.683 min  
 Delta R.T.: -0.001 min  
 Response: 289946332  
 Conc: 50.09 ng/ml



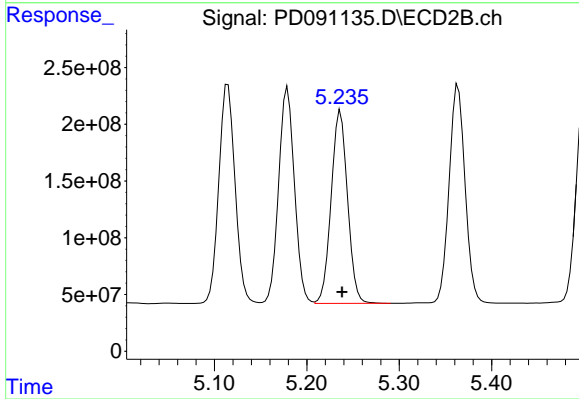
#8 Heptachlor epoxide  
 R.T.: 4.862 min  
 Delta R.T.: -0.002 min  
 Response: 2191072739  
 Conc: 51.39 ng/ml



#9 Endosulfan I

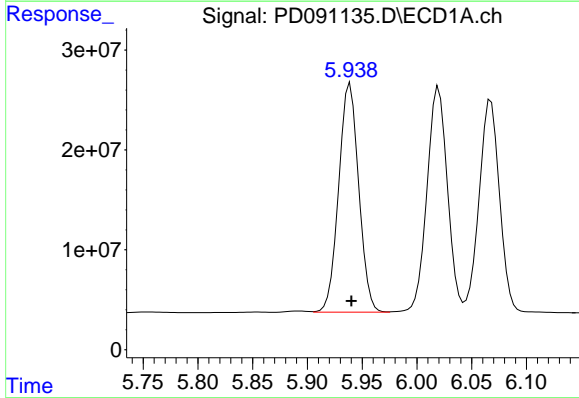
R.T.: 6.068 min  
 Delta R.T.: 0.000 min  
 Response: 274897488  
 Conc: 49.65 ng/ml

Instrument :  
 ECD\_D  
 ClientSampleId :  
 S-1MS



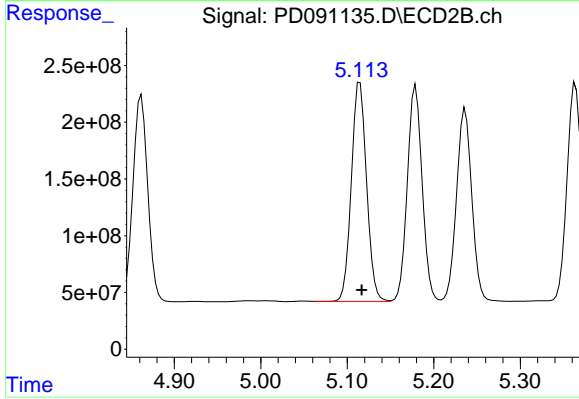
#9 Endosulfan I

R.T.: 5.236 min  
 Delta R.T.: -0.002 min  
 Response: 2090932016  
 Conc: 53.08 ng/ml



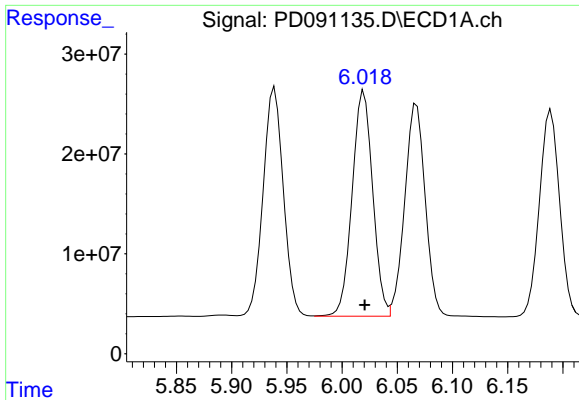
#10 gamma-Chlordane

R.T.: 5.939 min  
 Delta R.T.: -0.001 min  
 Response: 291590235  
 Conc: 49.16 ng/ml



#10 gamma-Chlordane

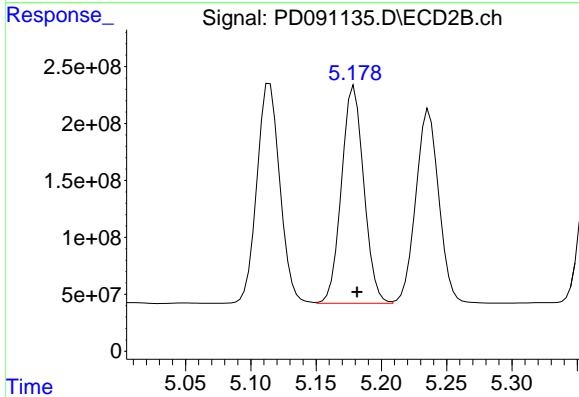
R.T.: 5.115 min  
 Delta R.T.: -0.002 min  
 Response: 2359232409  
 Conc: 52.49 ng/ml



#11 alpha-Chlordane

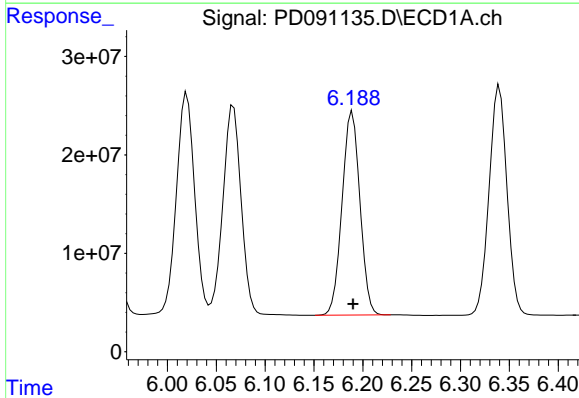
R.T.: 6.020 min  
 Delta R.T.: 0.000 min  
 Response: 292655241  
 Conc: 47.35 ng/ml

Instrument :  
 ECD\_D  
 ClientSampleId :  
 S-1MS



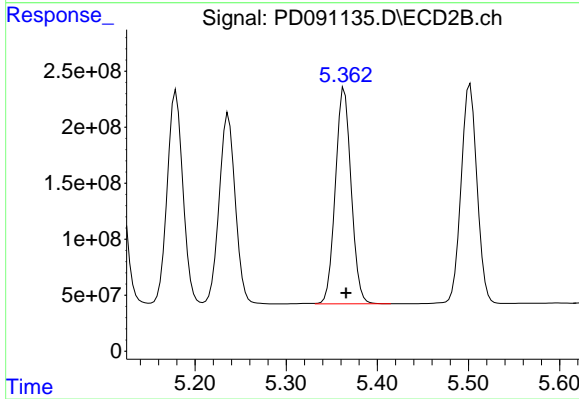
#11 alpha-Chlordane

R.T.: 5.179 min  
 Delta R.T.: -0.002 min  
 Response: 2267296458  
 Conc: 52.56 ng/ml



#12 4,4'-DDE

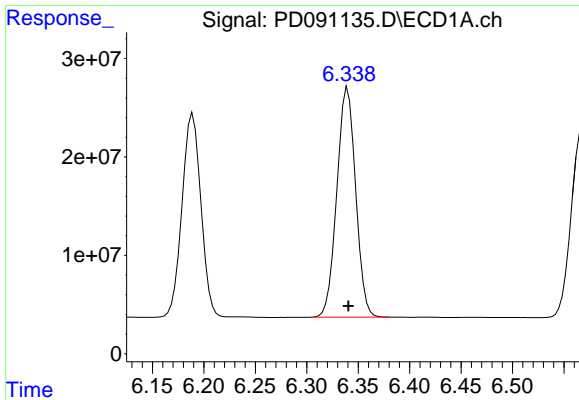
R.T.: 6.189 min  
 Delta R.T.: 0.000 min  
 Response: 263721876  
 Conc: 49.51 ng/ml



#12 4,4'-DDE

R.T.: 5.364 min  
 Delta R.T.: -0.002 min  
 Response: 2316458492  
 Conc: 52.84 ng/ml

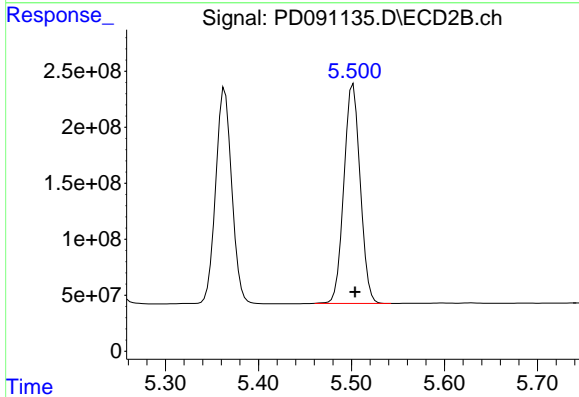




#13 Dieldrin

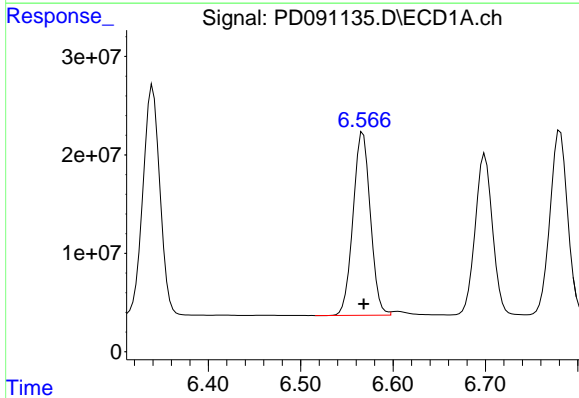
R.T.: 6.340 min  
 Delta R.T.: 0.000 min  
 Response: 296677108  
 Conc: 50.88 ng/ml

Instrument :  
 ECD\_D  
 ClientSampleId :  
 S-1MS



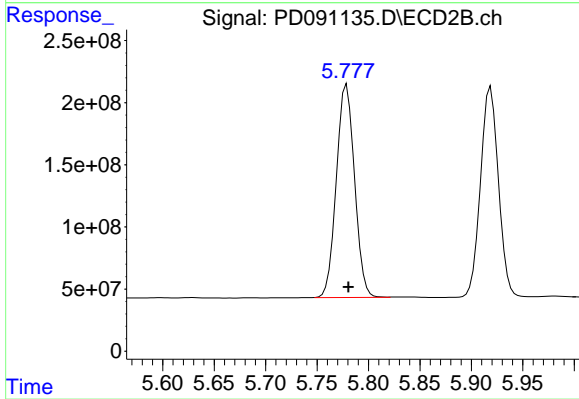
#13 Dieldrin

R.T.: 5.502 min  
 Delta R.T.: -0.002 min  
 Response: 2387135765  
 Conc: 54.03 ng/ml



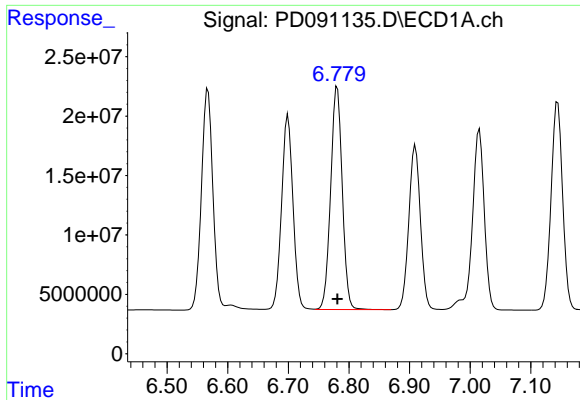
#14 Endrin

R.T.: 6.567 min  
 Delta R.T.: 0.000 min  
 Response: 242326975  
 Conc: 48.92 ng/ml



#14 Endrin

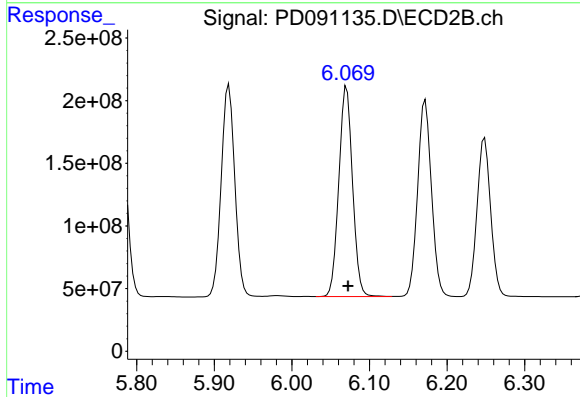
R.T.: 5.779 min  
 Delta R.T.: -0.002 min  
 Response: 2109220100  
 Conc: 52.09 ng/ml



#15 Endosulfan II

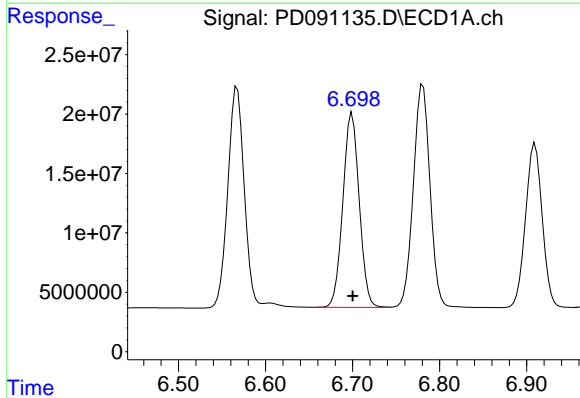
R.T.: 6.781 min  
 Delta R.T.: 0.000 min  
 Response: 249941476  
 Conc: 49.99 ng/ml

Instrument :  
 ECD\_D  
 ClientSampleId :  
 S-1MS



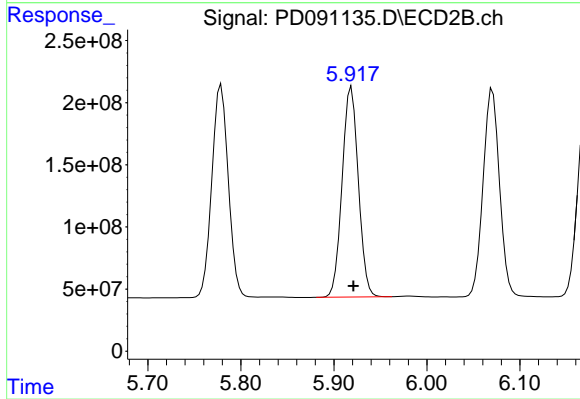
#15 Endosulfan II

R.T.: 6.071 min  
 Delta R.T.: -0.002 min  
 Response: 2061935812  
 Conc: 54.90 ng/ml



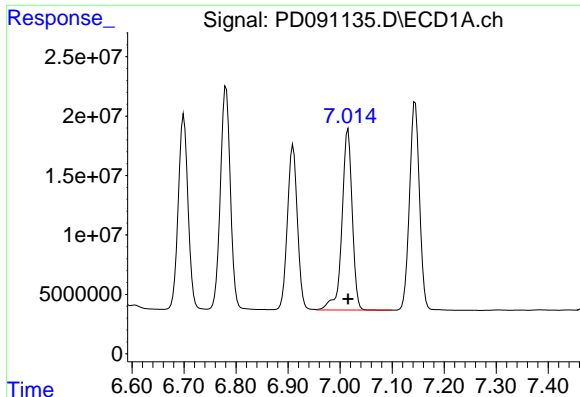
#16 4,4'-DDD

R.T.: 6.699 min  
 Delta R.T.: 0.000 min  
 Response: 213137796  
 Conc: 52.57 ng/ml



#16 4,4'-DDD

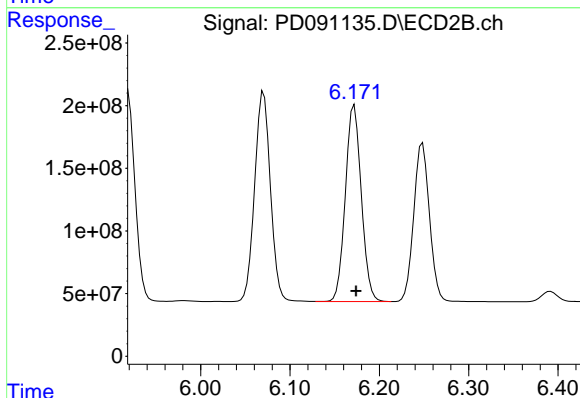
R.T.: 5.919 min  
 Delta R.T.: -0.002 min  
 Response: 2050025202  
 Conc: 56.26 ng/ml



#17 4,4'-DDT

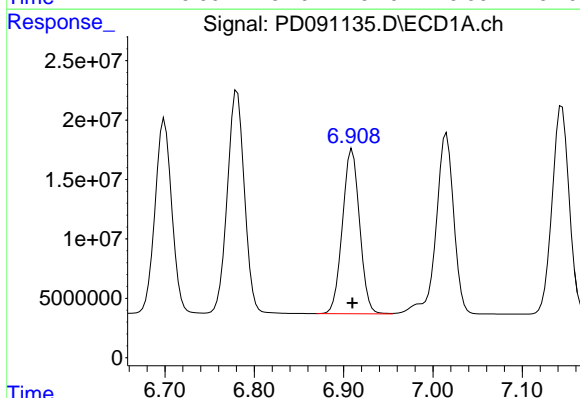
R.T.: 7.015 min  
 Delta R.T.: 0.000 min  
 Response: 208839420  
 Conc: 50.81 ng/ml

Instrument :  
 ECD\_D  
 ClientSampleId :  
 S-1MS



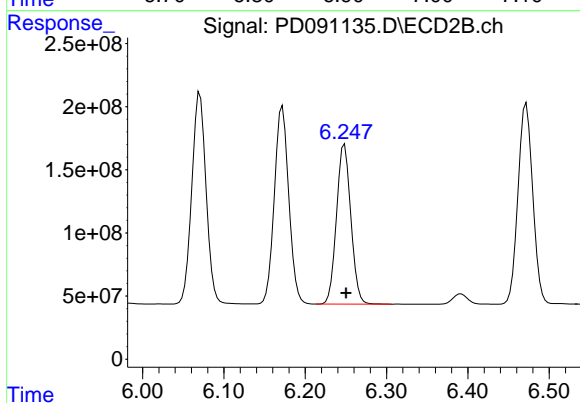
#17 4,4'-DDT

R.T.: 6.172 min  
 Delta R.T.: -0.002 min  
 Response: 1945772476  
 Conc: 55.48 ng/ml



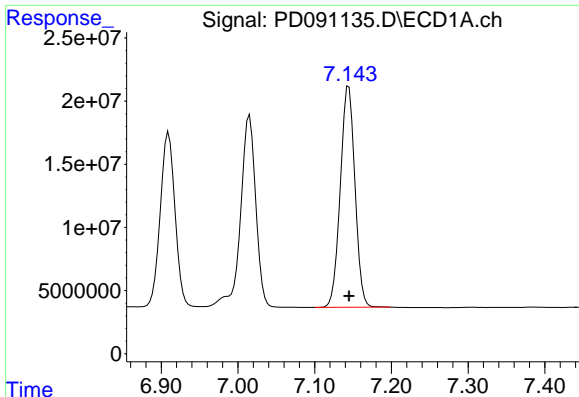
#18 Endrin aldehyde

R.T.: 6.910 min  
 Delta R.T.: 0.000 min  
 Response: 184895730  
 Conc: 50.48 ng/ml



#18 Endrin aldehyde

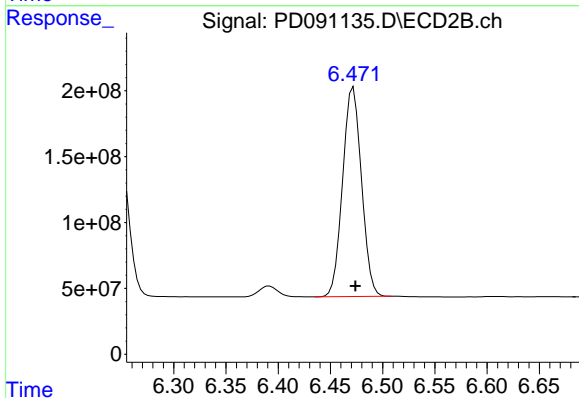
R.T.: 6.248 min  
 Delta R.T.: -0.002 min  
 Response: 1550768808  
 Conc: 56.00 ng/ml



#19 Endosulfan Sulfate

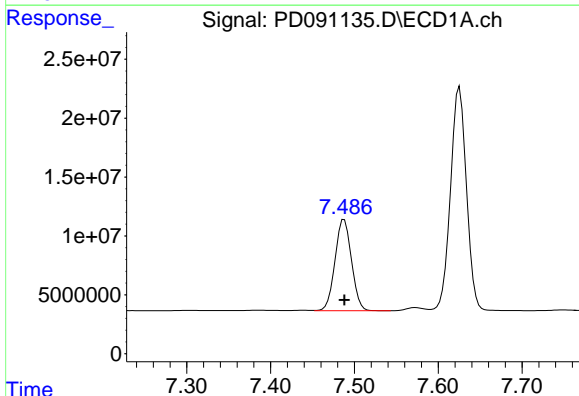
R.T.: 7.144 min  
 Delta R.T.: 0.000 min  
 Response: 232964910  
 Conc: 50.23 ng/ml

Instrument :  
 ECD\_D  
 ClientSampleId :  
 S-1MS



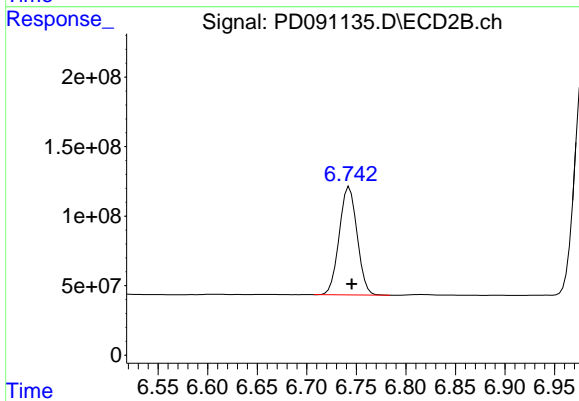
#19 Endosulfan Sulfate

R.T.: 6.472 min  
 Delta R.T.: -0.002 min  
 Response: 1992169811  
 Conc: 55.58 ng/ml



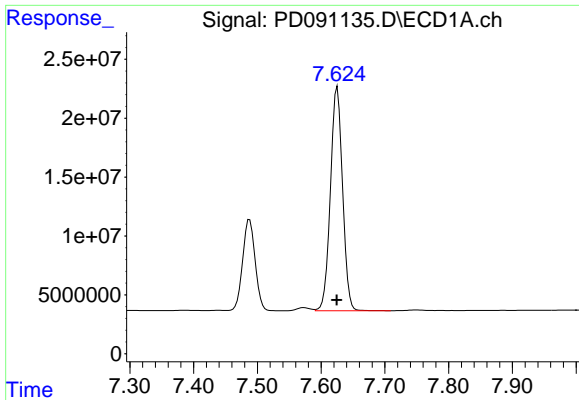
#20 Methoxychlor

R.T.: 7.488 min  
 Delta R.T.: 0.000 min  
 Response: 106039351  
 Conc: 49.89 ng/ml



#20 Methoxychlor

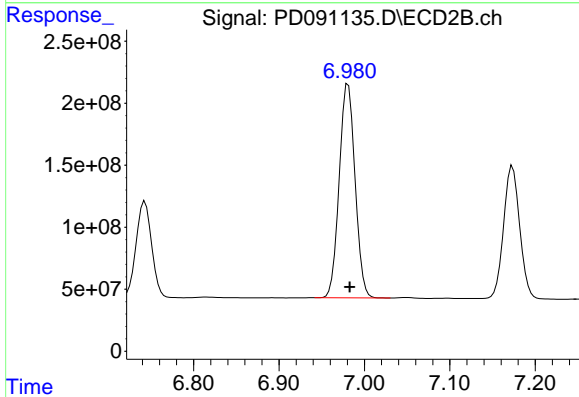
R.T.: 6.743 min  
 Delta R.T.: -0.002 min  
 Response: 976214201  
 Conc: 56.01 ng/ml



#21 Endrin ketone

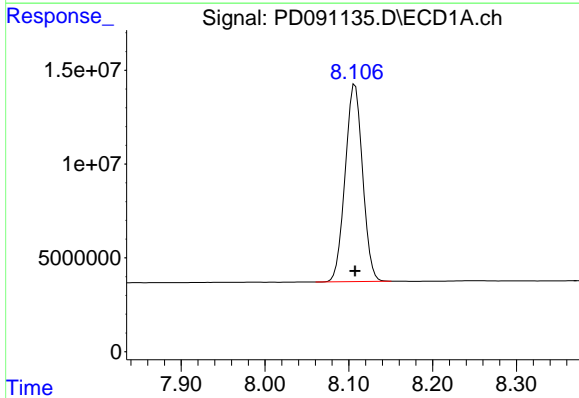
R.T.: 7.625 min  
 Delta R.T.: 0.000 min  
 Response: 251811033  
 Conc: 51.83 ng/ml

Instrument :  
 ECD\_D  
 ClientSampleId :  
 S-1MS



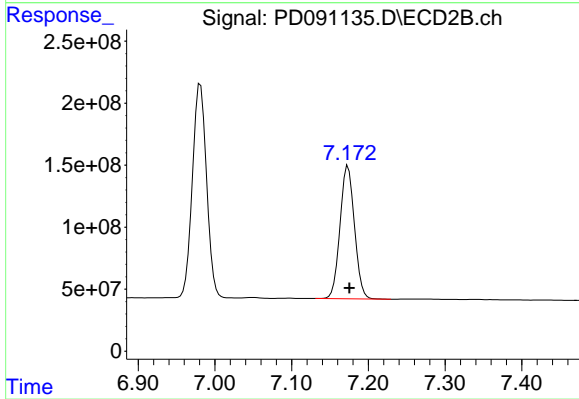
#21 Endrin ketone

R.T.: 6.981 min  
 Delta R.T.: -0.002 min  
 Response: 2227555034  
 Conc: 59.06 ng/ml



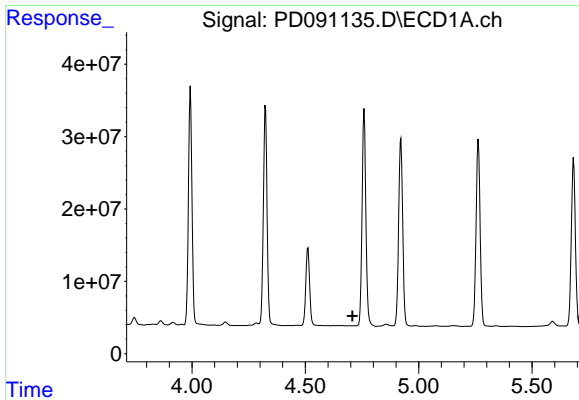
#22 Mirex

R.T.: 8.108 min  
 Delta R.T.: 0.000 min  
 Response: 152004390  
 Conc: 47.49 ng/ml



#22 Mirex

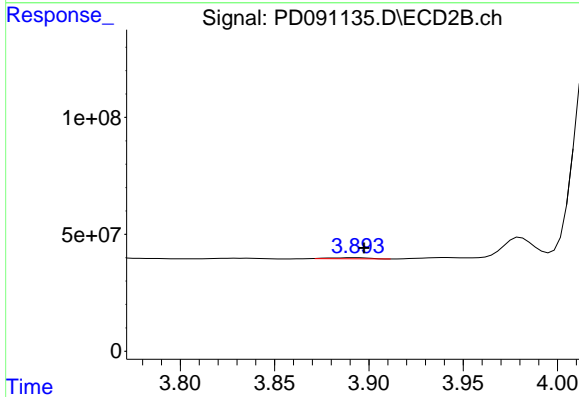
R.T.: 7.173 min  
 Delta R.T.: -0.002 min  
 Response: 1404604353  
 Conc: 54.67 ng/ml



#23 Chlordane-1

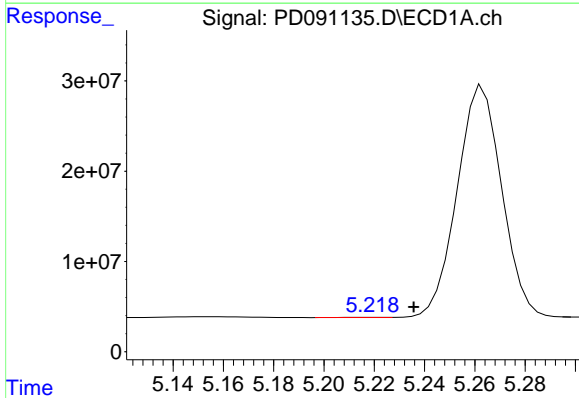
R.T.: 0.000 min  
 Exp R.T.: 4.709 min  
 Response: 0  
 Conc: N.D.

Instrument :  
 ECD\_D  
 ClientSampleId :  
 S-1MS



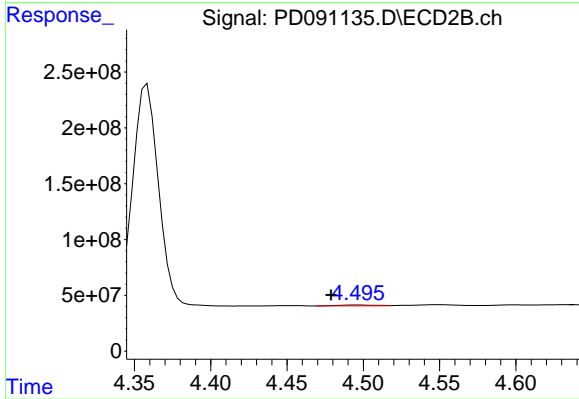
#23 Chlordane-1

R.T.: 3.894 min  
 Delta R.T.: -0.004 min  
 Response: 6459556  
 Conc: 5.18 ng/ml



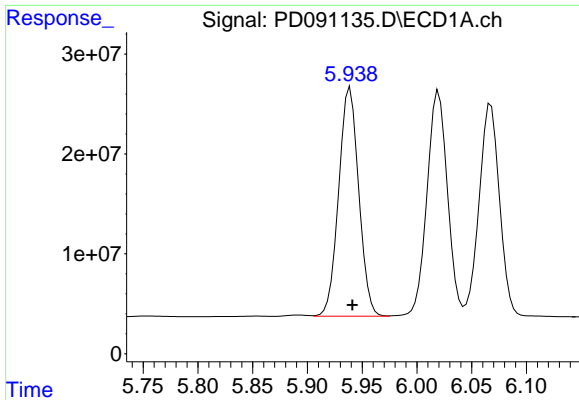
#24 Chlordane-2

R.T.: 5.219 min  
 Delta R.T.: -0.016 min  
 Response: 216956  
 Conc: 1.12 ng/ml



#24 Chlordane-2

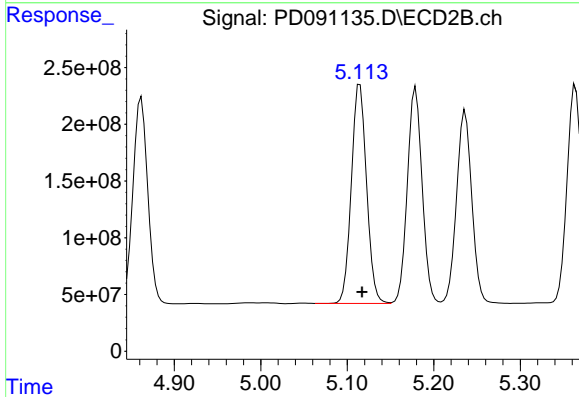
R.T.: 4.496 min  
 Delta R.T.: 0.017 min  
 Response: 12317240  
 Conc: 9.44 ng/ml



#25 Chlordane-3

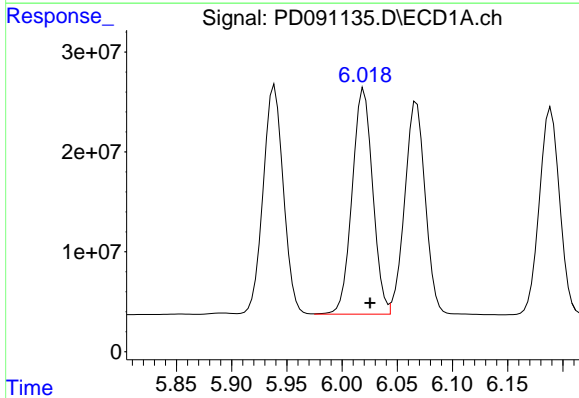
R.T.: 5.939 min  
 Delta R.T.: -0.002 min  
 Response: 291590235  
 Conc: 382.28 ng/ml

Instrument :  
 ECD\_D  
 ClientSampleId :  
 S-1MS



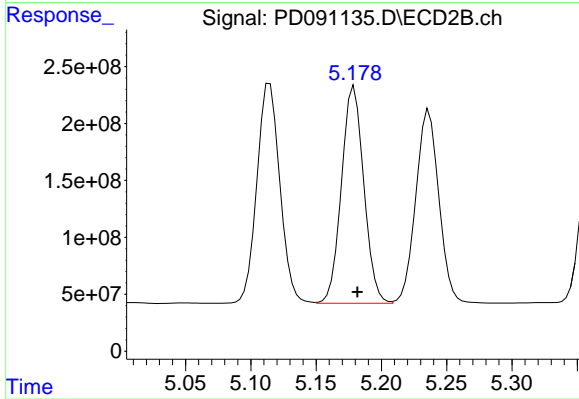
#25 Chlordane-3

R.T.: 5.115 min  
 Delta R.T.: -0.003 min  
 Response: 2359232409  
 Conc: 606.24 ng/ml



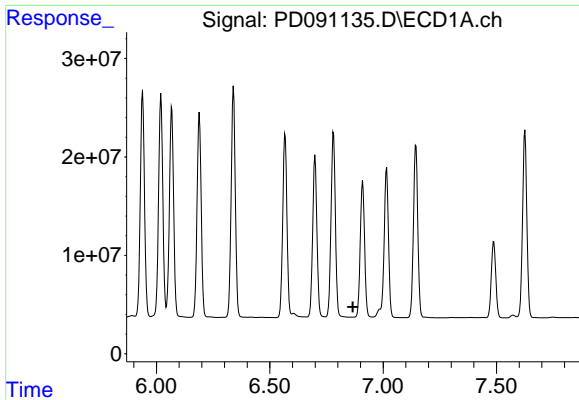
#26 Chlordane-4

R.T.: 6.020 min  
 Delta R.T.: -0.005 min  
 Response: 292655241  
 Conc: 302.05 ng/ml



#26 Chlordane-4

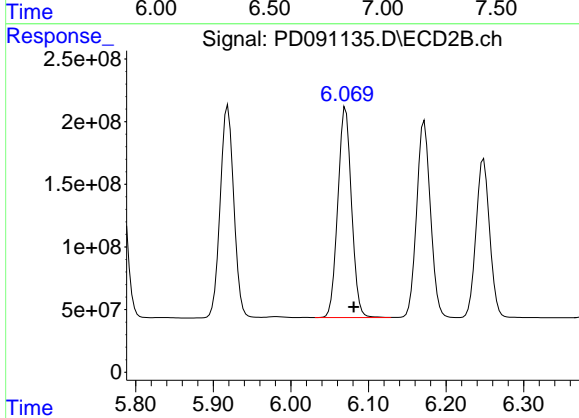
R.T.: 5.179 min  
 Delta R.T.: -0.003 min  
 Response: 2267296458  
 Conc: 678.58 ng/ml



#27 Chlordane-5

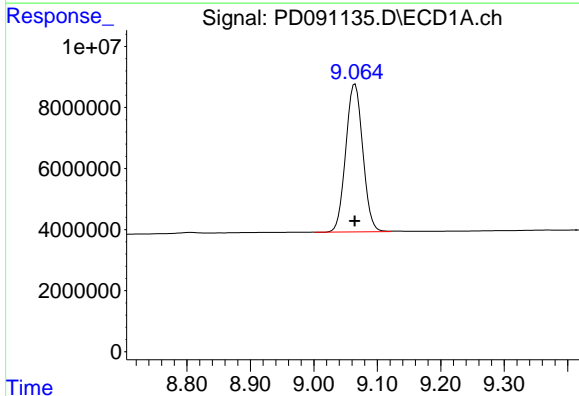
R.T.: 0.000 min  
 Exp R.T.: 6.866 min  
 Response: 0  
 Conc: N.D.

Instrument :  
 ECD\_D  
 ClientSampleId :  
 S-1MS



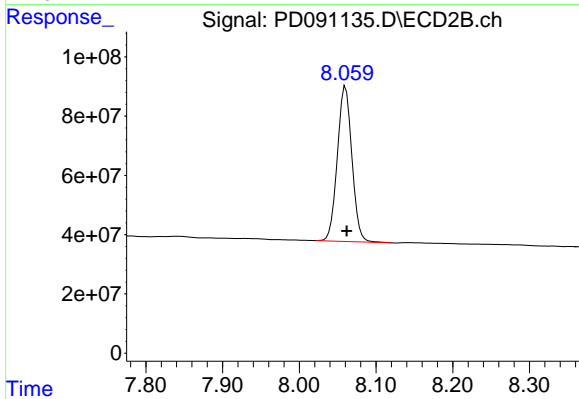
#27 Chlordane-5

R.T.: 6.071 min  
 Delta R.T.: -0.010 min  
 Response: 2061935812  
 Conc: 1396.94 ng/ml



#28 Decachlorobiphenyl

R.T.: 9.065 min  
 Delta R.T.: 0.000 min  
 Response: 90338257  
 Conc: 19.31 ng/ml



#28 Decachlorobiphenyl

R.T.: 8.060 min  
 Delta R.T.: -0.002 min  
 Response: 691143926  
 Conc: 22.82 ng/ml