

Data Path : Z:\pestpcbsrv\HPCHEM1\ECD\_D\Data\PD111319\  
 Data File : PD055963.D  
 Signal(s) : Signal #1: ECD1A.ch Signal #2: ECD2B.ch  
 Acq On : 14 Nov 2019 01:06  
 Operator : SG\AJ  
 Sample : K5774-21MS  
 Misc :  
 ALS Vial : 52 Sample Multiplier: 1

Instrument :  
 ECD\_D  
 ClientSampleId :  
 C0AS7MS

Integration File signal 1: autoint1.e  
 Integration File signal 2: autoint2.e  
 Quant Time: Nov 14 03:06:16 2019  
 Quant Method : Z:\pestpcbsrv\HPCHEM1\ECD\_D\Method\PD110319CLP.M  
 Quant Title : GC Extractables  
 QLast Update : Sat Nov 02 07:20:38 2019  
 Response via : Initial Calibration  
 Integrator: ChemStation

Volume Inj. : 1 µl  
 Signal #1 Phase : ZB-MR2 Signal #2 Phase: ZB-MR1  
 Signal #1 Info : 30M x 0.32mm x0.2 Signal #2 Info : 30M x 0.32mm x 0.50µm

Compound	RT#1	RT#2	Resp#1	Resp#2	ng/ml	ng/ml
-----						
System Monitoring Compounds						
1) SA Tetrachlo...	3.289	3.963	11988621	13411351	15.926	12.798
27) SA Decachlor...	7.962	8.997	19462699	22074044	23.877	19.439
Target Compounds						
3) MA gamma-BHC...	3.991	4.632	54507857	67799062	53.290	48.123
4) MA Heptachlor	4.276	5.138	47216328	60115474	49.869	41.335
5) MB Aldrin	4.515	5.441	43611838	59575911	47.073	43.419
6) B beta-BHC	4.276f	4.817	47216328	-1723494	104.391	N.D. #
7) B delta-BHC	4.431	0.000	2132041	0	2.089	N.D. #
8) B Heptachlo...	5.016f	5.815	9643423	3562321	10.801	2.640 #
9) A Endosulfan I	5.311	0.000	10459142	0	12.481	N.D. #
10) B trans-Chl...	0.000	6.042	0	27679585	N.D.	19.404
12) B 4,4'-DDE	0.000	6.282	0	2448630	N.D.	1.817
13) MA Dieldrin	5.523	6.436	119.0E6	134.8E6	126.546	95.393
14) MA Endrin	5.776	6.653	79977874	104.7E6	99.695	90.972
15) B Endosulfa...	0.000	6.848	0	4774181	N.D.	3.687
16) A 4,4'-DDD	5.915	6.780	2494105	36456173	3.531	32.648 #
17) MA 4,4'-DDT	6.144	7.072	79565620	97658348	122.782	89.811 #
18) B Endrin al...	6.232	6.997	1790789	3569929	2.507	3.288 #
19) B Endosulfa...	6.424	7.179	10532993	9547018	13.424	7.919 #
20) A Methoxychlor	6.668	7.580f	15104994	13495386	40.382	21.652 #
21) B Endrin ke...	6.859f	7.731f	4974885	8503502	5.617	6.447
22) Toxaphene-1	5.523	6.315	119.0E6	1471216	14392.320	143.288 #
23) Toxaphene-2	5.648	6.653	13579603	104.7E6	1520.963	8725.971 #
24) Toxaphene-3	5.972	6.997	16494033	3569929	2118.874	192.632 #
25) Toxaphene-4	6.144	7.072	79565620	97658348	3488.756	1895.567 #
26) Toxaphene-5	6.859	7.580	4974885	13495386	173.699	555.346 #

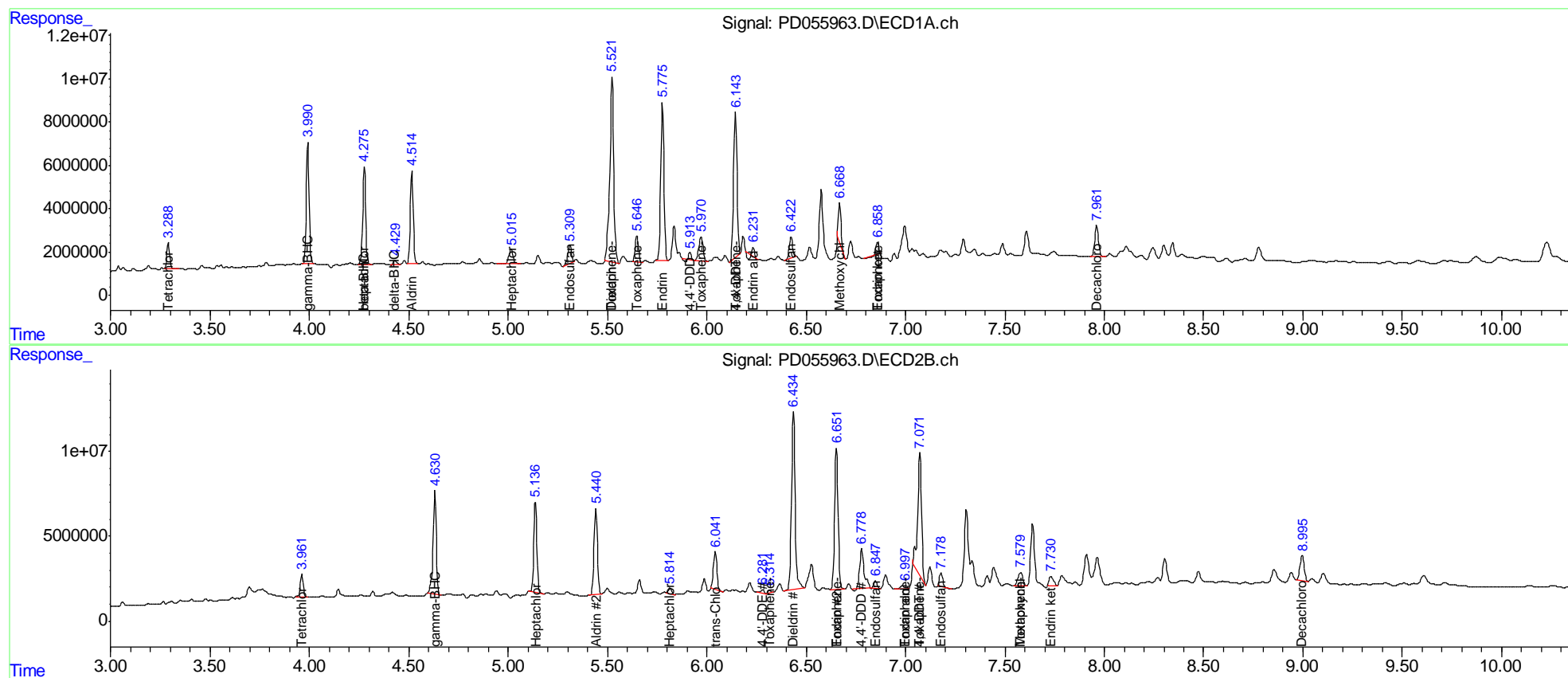
(f)=RT Delta > 1/2 Window (#)=Amounts differ by > 25% (m)=manual int.

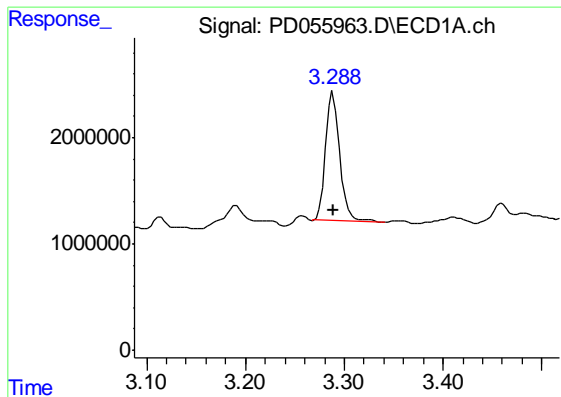
Data Path : Z:\pestpcbsrv\HPCHEM1\ECD\_D\Data\PD111319\  
 Data File : PD055963.D  
 Signal(s) : Signal #1: ECD1A.ch Signal #2: ECD2B.ch  
 Acq On : 14 Nov 2019 01:06  
 Operator : SG\AJ  
 Sample : K5774-21MS  
 Misc :  
 ALS Vial : 52 Sample Multiplier: 1

Instrument :  
 ECD\_D  
 Client Sample Id :  
 C0A57MS

Integration File signal 1: autoint1.e  
 Integration File signal 2: autoint2.e  
 Quant Time: Nov 14 03:06:16 2019  
 Quant Method : Z:\pestpcbsrv\HPCHEM1\ECD\_D\Method\PD110319CLP.M  
 Quant Title : GC Extractables  
 QLast Update : Sat Nov 02 07:20:38 2019  
 Response via : Initial Calibration  
 Integrator: ChemStation

Volume Inj. : 1 µl  
 Signal #1 Phase : ZB-MR2 Signal #2 Phase: ZB-MR1  
 Signal #1 Info : 30M x 0.32mm x0.2 Signal #2 Info : 30M x 0.32mm x 0.50µm

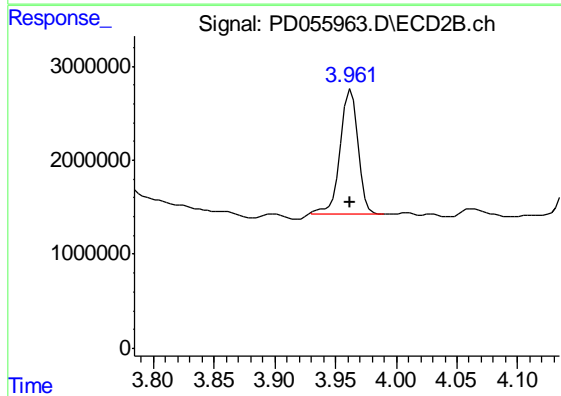




#1 Tetrachloro-m-xylene

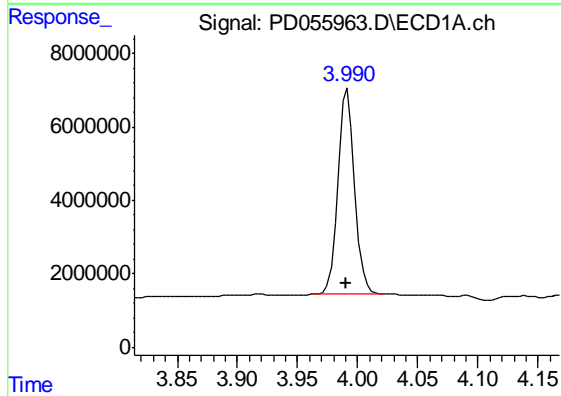
R.T.: 3.289 min  
 Delta R.T.: 0.000 min  
 Response: 11988621  
 Conc: 15.93 ng/ml

Instrument :  
 ECD\_D  
 ClientSampleId :  
 C0AS7MS



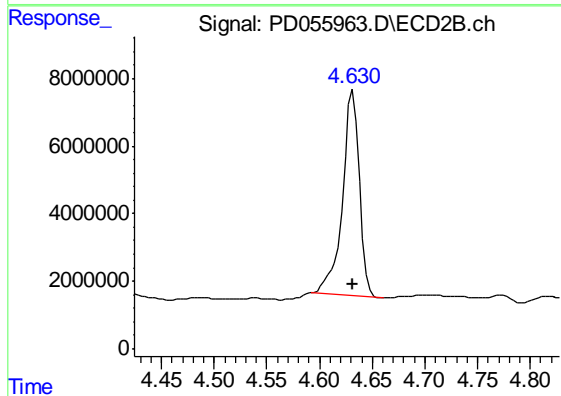
#1 Tetrachloro-m-xylene

R.T.: 3.963 min  
 Delta R.T.: 0.000 min  
 Response: 13411351  
 Conc: 12.80 ng/ml



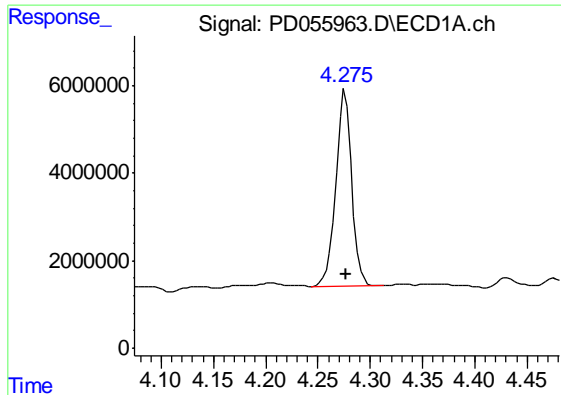
#3 gamma-BHC (Lindane)

R.T.: 3.991 min  
 Delta R.T.: 0.000 min  
 Response: 54507857  
 Conc: 53.29 ng/ml



#3 gamma-BHC (Lindane)

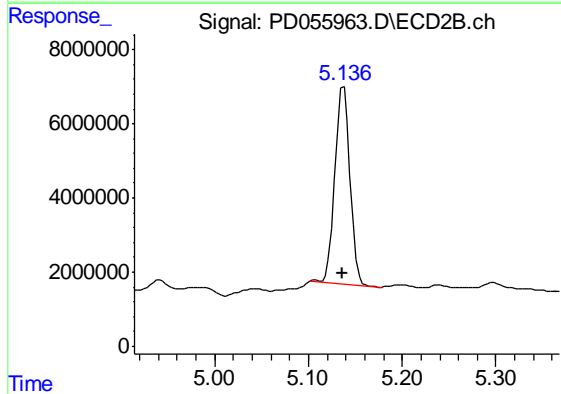
R.T.: 4.632 min  
 Delta R.T.: 0.000 min  
 Response: 67799062  
 Conc: 48.12 ng/ml



#4 Heptachlor

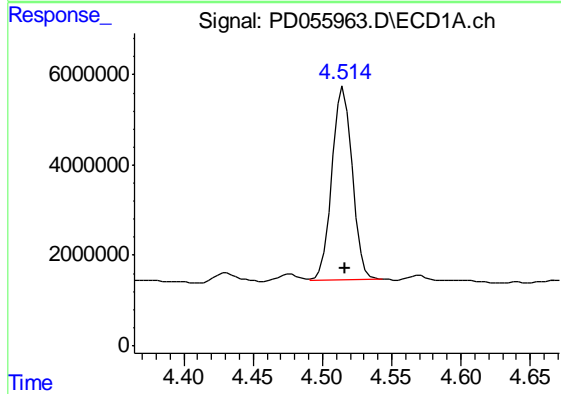
R.T.: 4.276 min  
 Delta R.T.: 0.000 min  
 Response: 47216328  
 Conc: 49.87 ng/ml

Instrument :  
 ECD\_D  
 ClientSampleId :  
 C0AS7MS



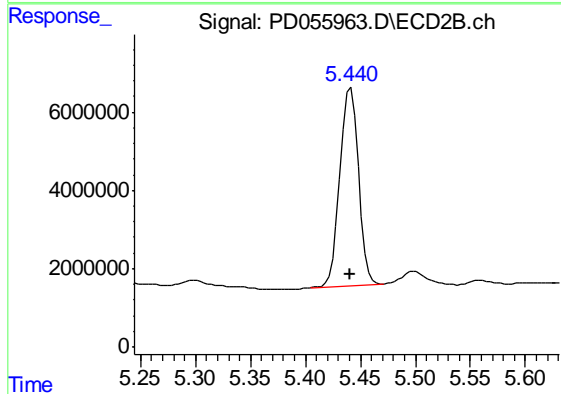
#4 Heptachlor

R.T.: 5.138 min  
 Delta R.T.: 0.000 min  
 Response: 60115474  
 Conc: 41.34 ng/ml



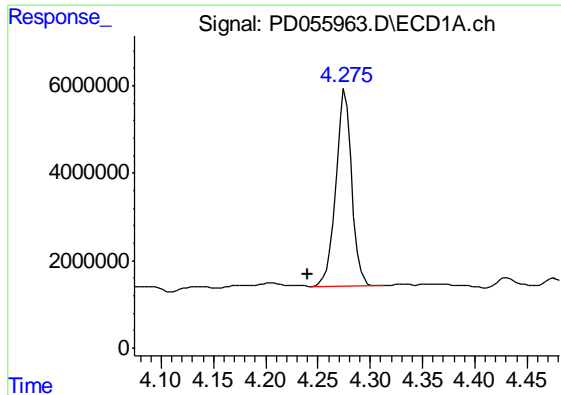
#5 Aldrin

R.T.: 4.515 min  
 Delta R.T.: 0.000 min  
 Response: 43611838  
 Conc: 47.07 ng/ml



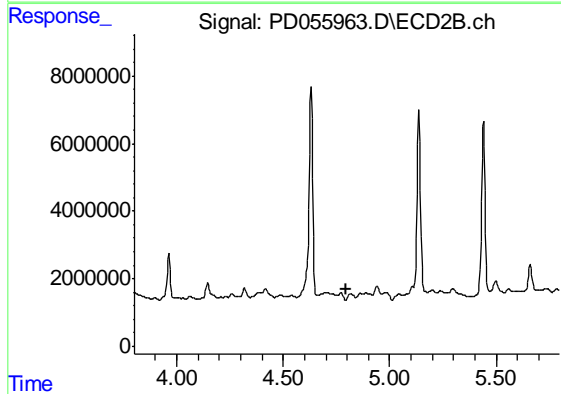
#5 Aldrin

R.T.: 5.441 min  
 Delta R.T.: 0.000 min  
 Response: 59575911  
 Conc: 43.42 ng/ml

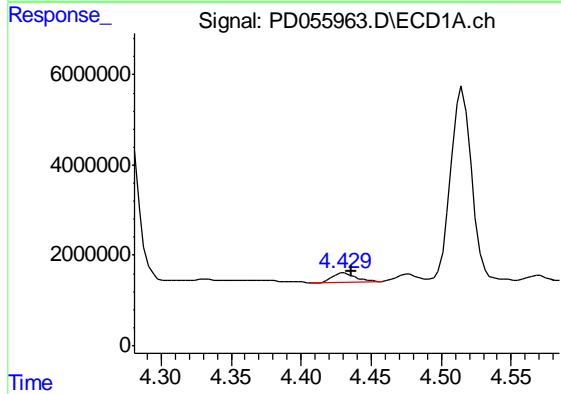


#6 beta-BHC  
 R.T.: 4.276 min  
 Delta R.T.: 0.036 min  
 Response: 47216328  
 Conc: 104.39 ng/ml

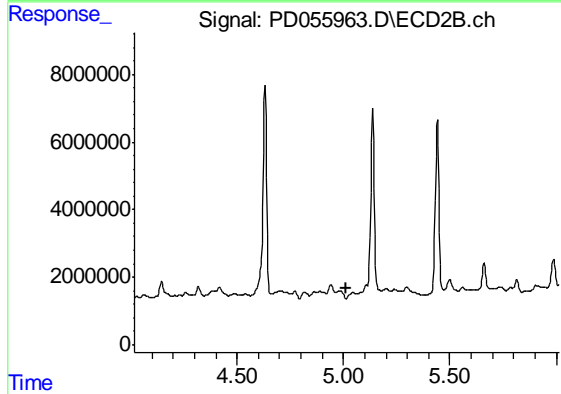
Instrument :  
 ECD\_D  
 ClientSampleId :  
 C0A57MS



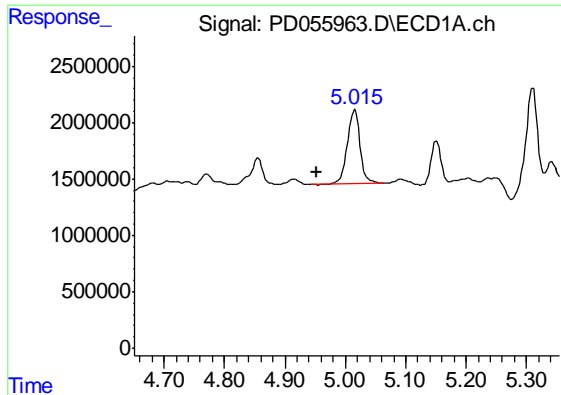
#6 beta-BHC  
 R.T.: 4.817 min  
 Delta R.T.: 0.018 min  
 Response: -1723494  
 Conc: N.D.



#7 delta-BHC  
 R.T.: 4.431 min  
 Delta R.T.: -0.005 min  
 Response: 2132041  
 Conc: 2.09 ng/ml



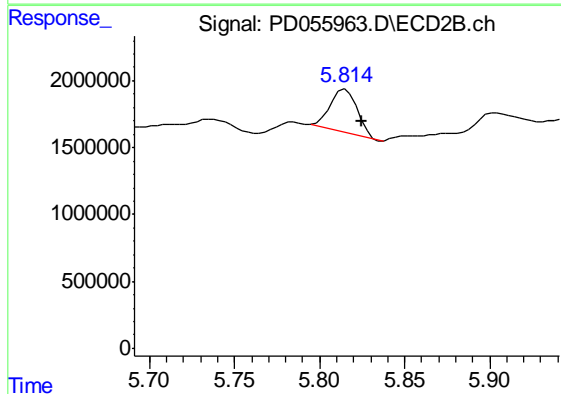
#7 delta-BHC  
 R.T.: 0.000 min  
 Exp R.T. : 5.015 min  
 Response: 0  
 Conc: N.D.



#8 Heptachlor epoxide

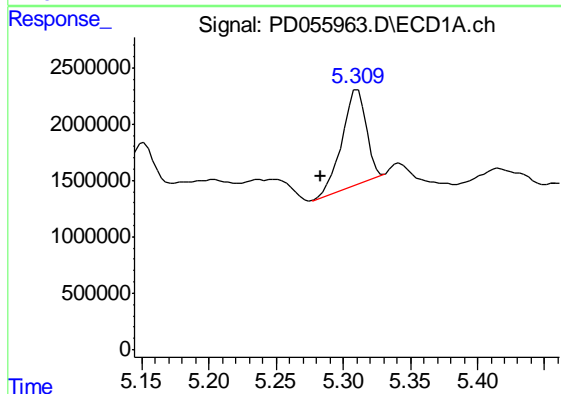
R.T.: 5.016 min  
Delta R.T.: 0.064 min  
Response: 9643423  
Conc: 10.80 ng/ml

Instrument :  
ECD\_D  
ClientSampleId :  
C0AS7MS



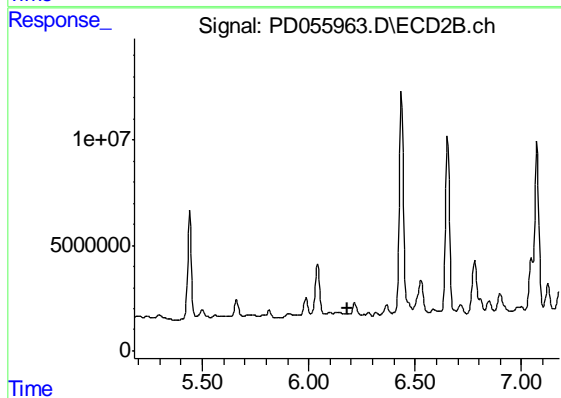
#8 Heptachlor epoxide

R.T.: 5.815 min  
Delta R.T.: -0.009 min  
Response: 3562321  
Conc: 2.64 ng/ml



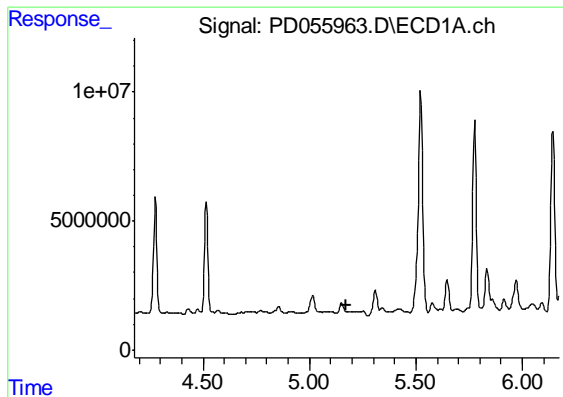
#9 Endosulfan I

R.T.: 5.311 min  
Delta R.T.: 0.027 min  
Response: 10459142  
Conc: 12.48 ng/ml



#9 Endosulfan I

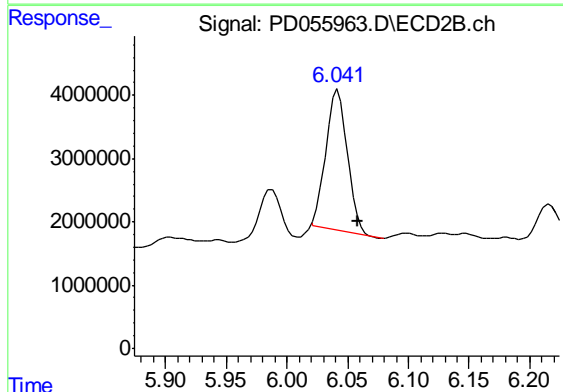
R.T.: 0.000 min  
Exp R.T. : 6.180 min  
Response: 0  
Conc: N.D.



#10 trans-Chlordane

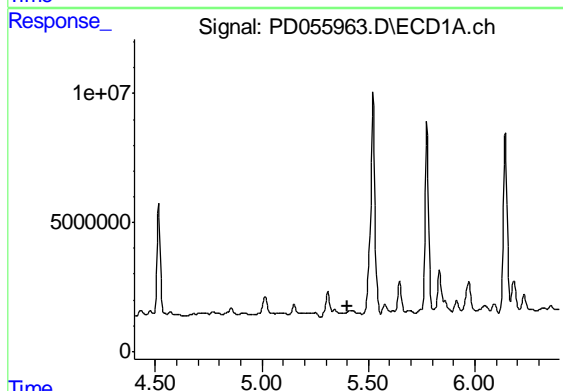
R.T.: 0.000 min  
 Exp R.T. : 5.174 min  
 Response: 0  
 Conc: N.D.

Instrument :  
 ECD\_D  
 ClientSampled :  
 C0AS7MS



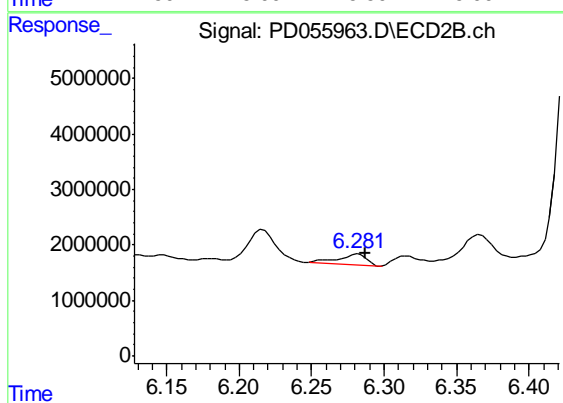
#10 trans-Chlordane

R.T.: 6.042 min  
 Delta R.T.: -0.016 min  
 Response: 27679585  
 Conc: 19.40 ng/ml



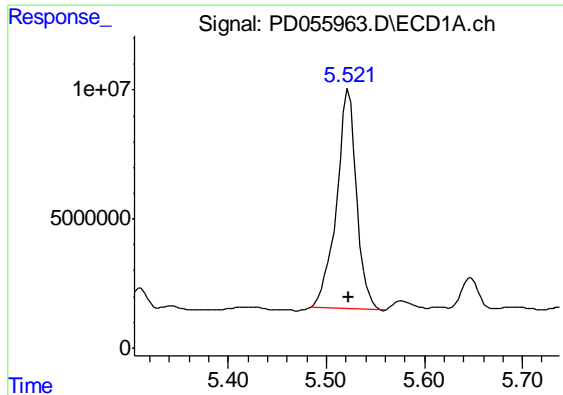
#12 4,4'-DDE

R.T.: 0.000 min  
 Exp R.T. : 5.400 min  
 Response: 0  
 Conc: N.D.



#12 4,4'-DDE

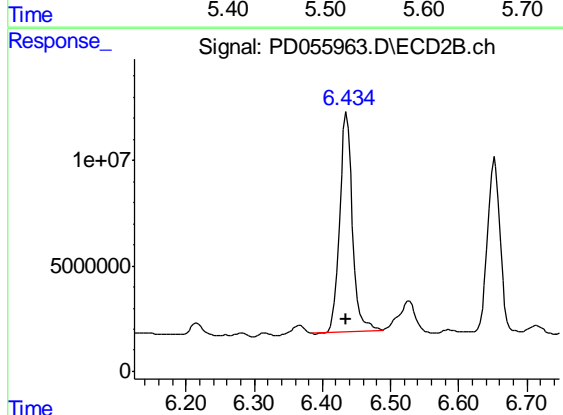
R.T.: 6.282 min  
 Delta R.T.: -0.005 min  
 Response: 2448630  
 Conc: 1.82 ng/ml



#13 Dieldrin

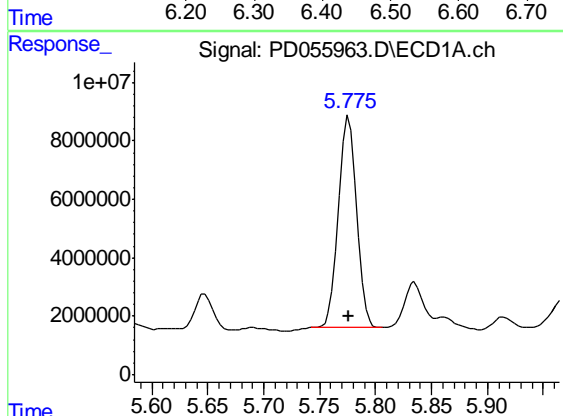
R.T.: 5.523 min  
 Delta R.T.: 0.000 min  
 Response: 119029735  
 Conc: 126.55 ng/ml

Instrument :  
 ECD\_D  
 ClientSampleId :  
 C0AS7MS



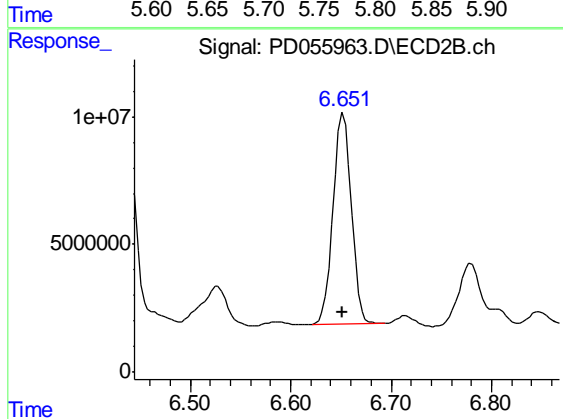
#13 Dieldrin

R.T.: 6.436 min  
 Delta R.T.: 0.000 min  
 Response: 134846705  
 Conc: 95.39 ng/ml



#14 Endrin

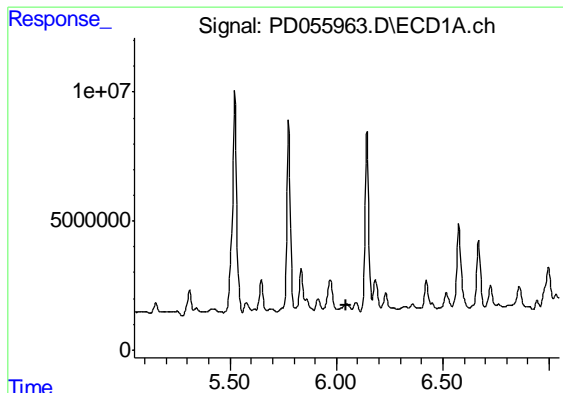
R.T.: 5.776 min  
 Delta R.T.: 0.000 min  
 Response: 79977874  
 Conc: 99.69 ng/ml



#14 Endrin

R.T.: 6.653 min  
 Delta R.T.: 0.000 min  
 Response: 104735064  
 Conc: 90.97 ng/ml

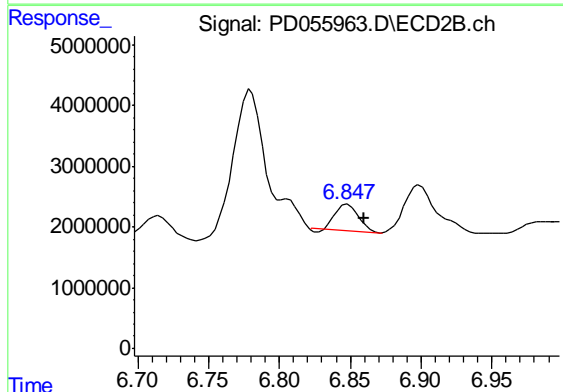




#15 Endosulfan II

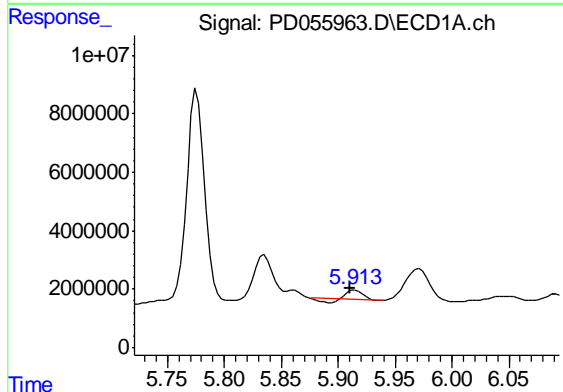
R.T.: 0.000 min  
 Exp R.T. : 6.049 min  
 Response: 0  
 Conc: N.D.

Instrument :  
 ECD\_D  
 ClientSampleId :  
 C0AS7MS



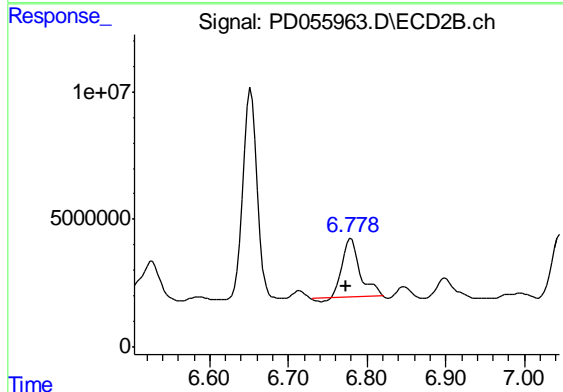
#15 Endosulfan II

R.T.: 6.848 min  
 Delta R.T.: -0.012 min  
 Response: 4774181  
 Conc: 3.69 ng/ml



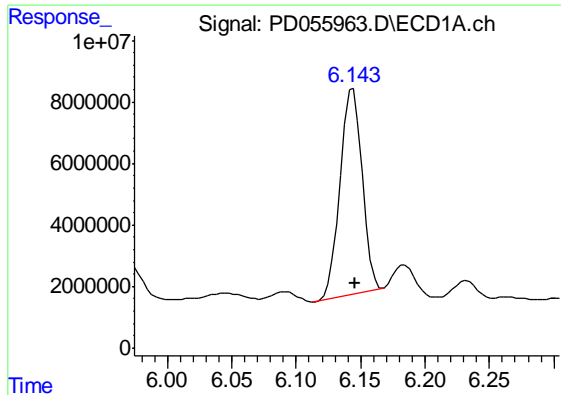
#16 4,4'-DDD

R.T.: 5.915 min  
 Delta R.T.: 0.004 min  
 Response: 2494105  
 Conc: 3.53 ng/ml



#16 4,4'-DDD

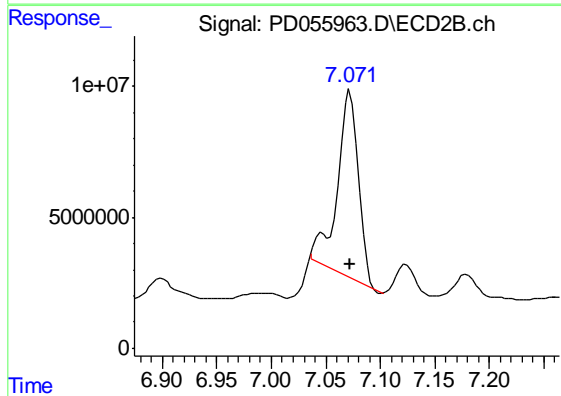
R.T.: 6.780 min  
 Delta R.T.: 0.006 min  
 Response: 36456173  
 Conc: 32.65 ng/ml



#17 4,4'-DDT

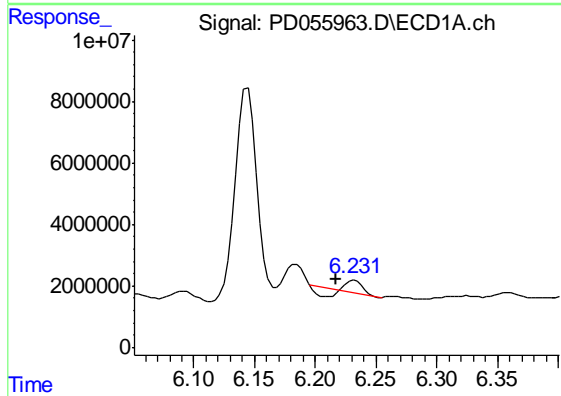
R.T.: 6.144 min  
 Delta R.T.: -0.002 min  
 Response: 79565620  
 Conc: 122.78 ng/ml

Instrument :  
 ECD\_D  
 ClientSampleId :  
 C0AS7MS



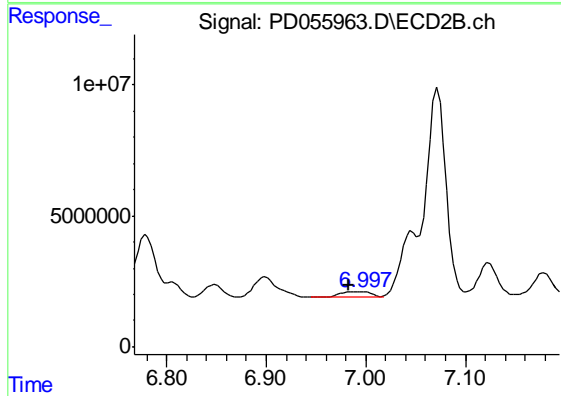
#17 4,4'-DDT

R.T.: 7.072 min  
 Delta R.T.: 0.000 min  
 Response: 97658348  
 Conc: 89.81 ng/ml



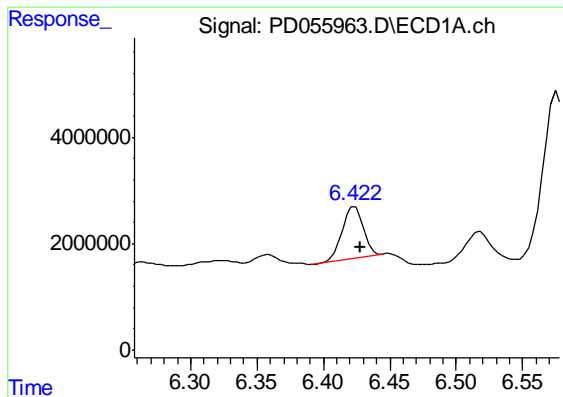
#18 Endrin aldehyde

R.T.: 6.232 min  
 Delta R.T.: 0.015 min  
 Response: 1790789  
 Conc: 2.51 ng/ml



#18 Endrin aldehyde

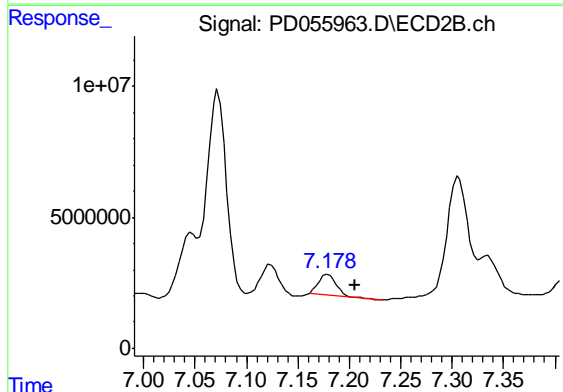
R.T.: 6.997 min  
 Delta R.T.: 0.014 min  
 Response: 3569929  
 Conc: 3.29 ng/ml



#19 Endosulfan Sulfate

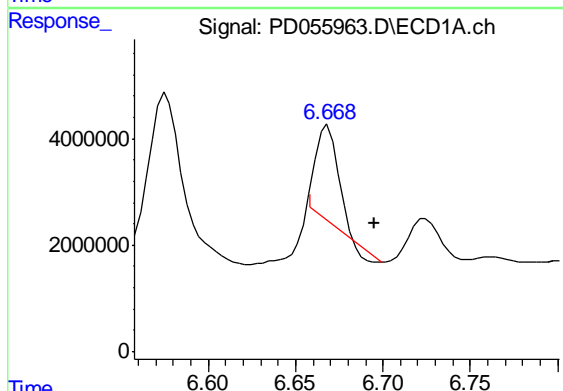
R.T.: 6.424 min  
 Delta R.T.: -0.004 min  
 Response: 10532993  
 Conc: 13.42 ng/ml

Instrument :  
 ECD\_D  
 ClientSampleId :  
 C0AS7MS



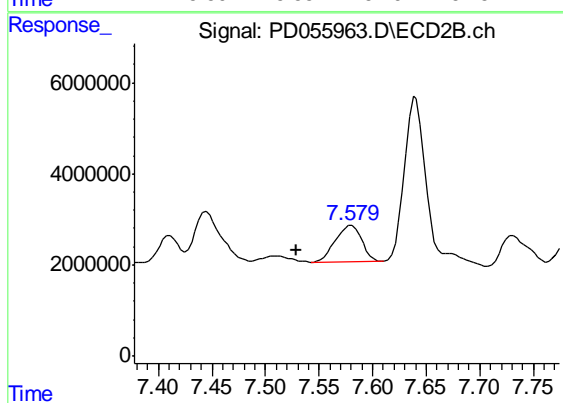
#19 Endosulfan Sulfate

R.T.: 7.179 min  
 Delta R.T.: -0.026 min  
 Response: 9547018  
 Conc: 7.92 ng/ml



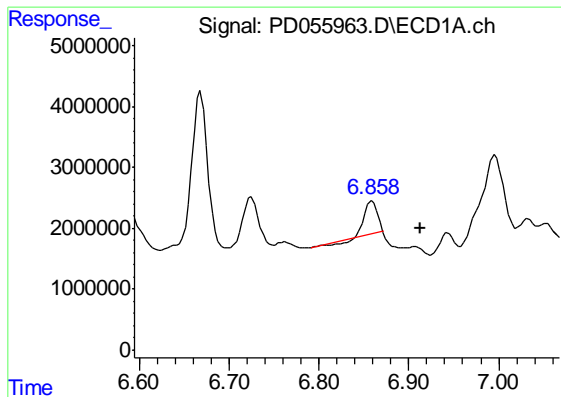
#20 Methoxychlor

R.T.: 6.668 min  
 Delta R.T.: -0.027 min  
 Response: 15104994  
 Conc: 40.38 ng/ml



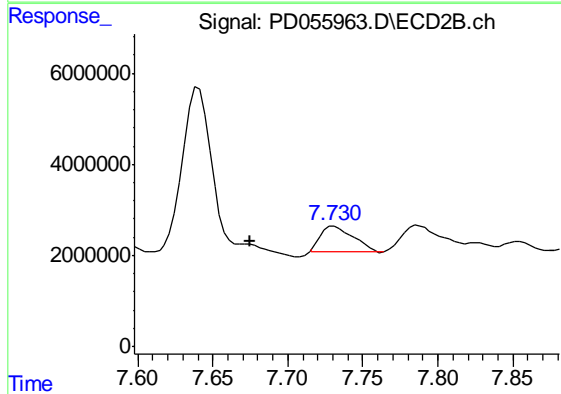
#20 Methoxychlor

R.T.: 7.580 min  
 Delta R.T.: 0.052 min  
 Response: 13495386  
 Conc: 21.65 ng/ml

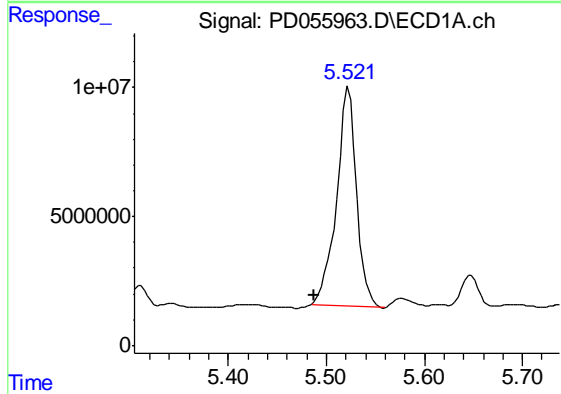


#21 Endrin ketone  
R.T.: 6.859 min  
Delta R.T.: -0.053 min  
Response: 4974885  
Conc: 5.62 ng/ml

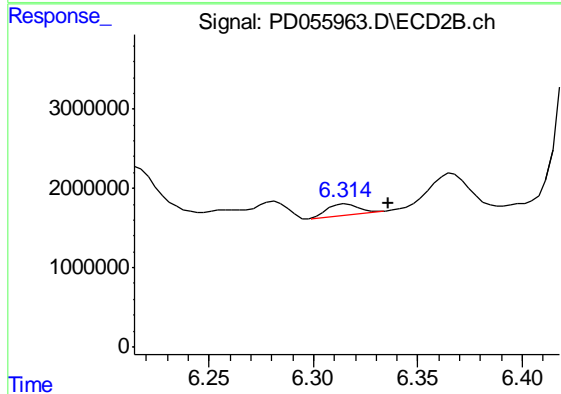
Instrument :  
ECD\_D  
ClientSampleId :  
C0AS7MS



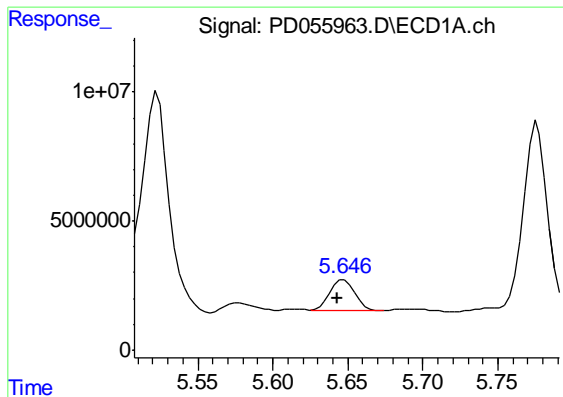
#21 Endrin ketone  
R.T.: 7.731 min  
Delta R.T.: 0.056 min  
Response: 8503502  
Conc: 6.45 ng/ml



#22 Toxaphene-1  
R.T.: 5.523 min  
Delta R.T.: 0.034 min  
Response: 119029735  
Conc: 14392.32 ng/ml



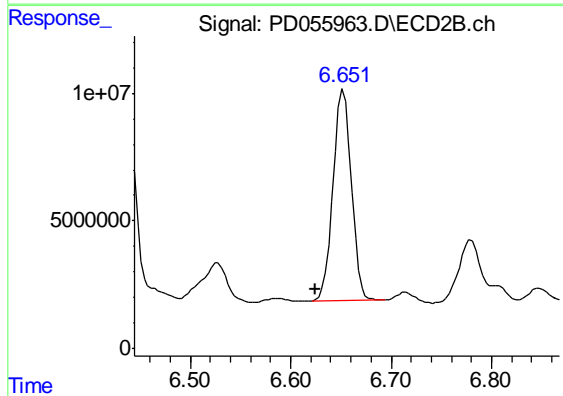
#22 Toxaphene-1  
R.T.: 6.315 min  
Delta R.T.: -0.020 min  
Response: 1471216  
Conc: 143.29 ng/ml



#23 Toxaphene-2

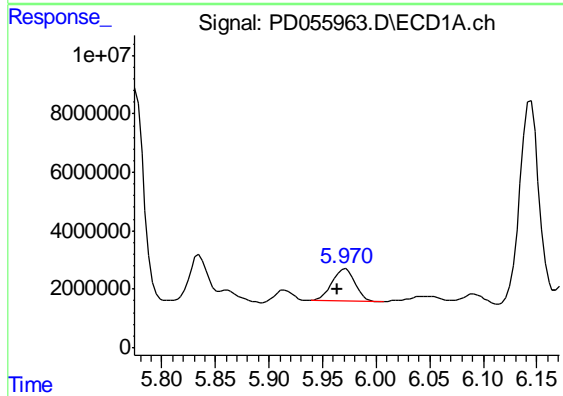
R.T.: 5.648 min  
 Delta R.T.: 0.005 min  
 Response: 13579603  
 Conc: 1520.96 ng/ml

Instrument :  
 ECD\_D  
 ClientSampleId :  
 C0AS7MS



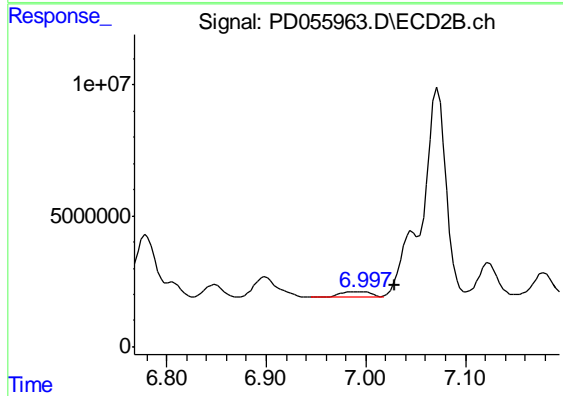
#23 Toxaphene-2

R.T.: 6.653 min  
 Delta R.T.: 0.028 min  
 Response: 104735064  
 Conc: 8725.97 ng/ml



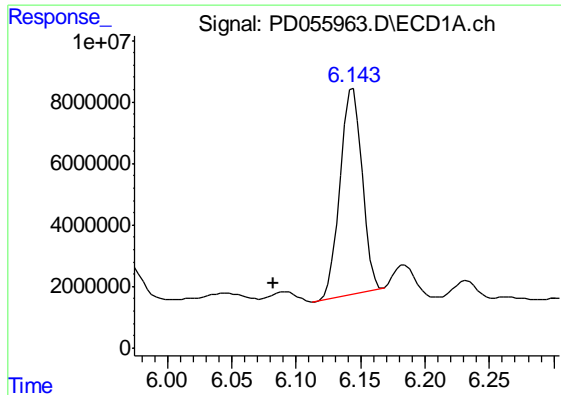
#24 Toxaphene-3

R.T.: 5.972 min  
 Delta R.T.: 0.008 min  
 Response: 16494033  
 Conc: 2118.87 ng/ml



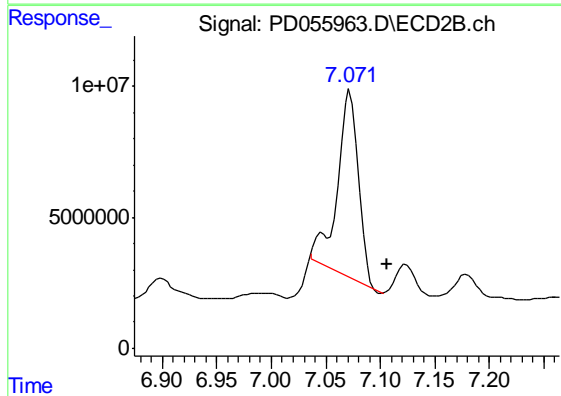
#24 Toxaphene-3

R.T.: 6.997 min  
 Delta R.T.: -0.033 min  
 Response: 3569929  
 Conc: 192.63 ng/ml

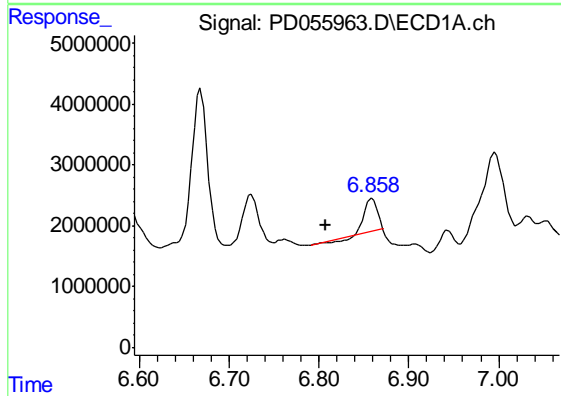


#25 Toxaphene-4  
 R.T.: 6.144 min  
 Delta R.T.: 0.062 min  
 Response: 79565620  
 Conc: 3488.76 ng/ml

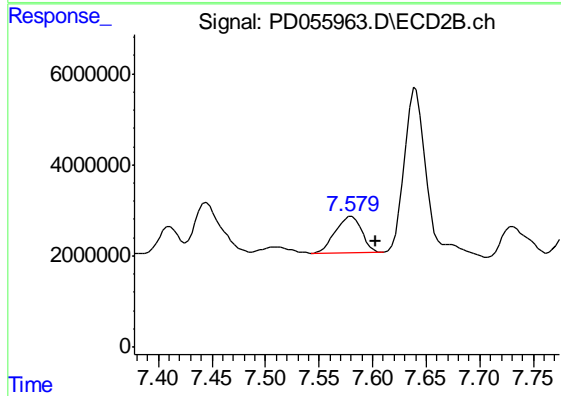
Instrument :  
 ECD\_D  
 ClientSampleId :  
 C0AS7MS



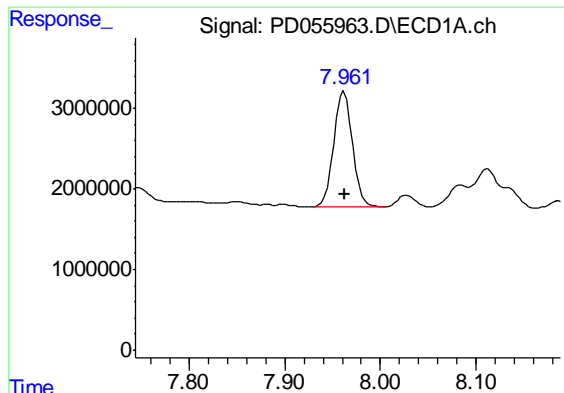
#25 Toxaphene-4  
 R.T.: 7.072 min  
 Delta R.T.: -0.034 min  
 Response: 97658348  
 Conc: 1895.57 ng/ml



#26 Toxaphene-5  
 R.T.: 6.859 min  
 Delta R.T.: 0.053 min  
 Response: 4974885  
 Conc: 173.70 ng/ml



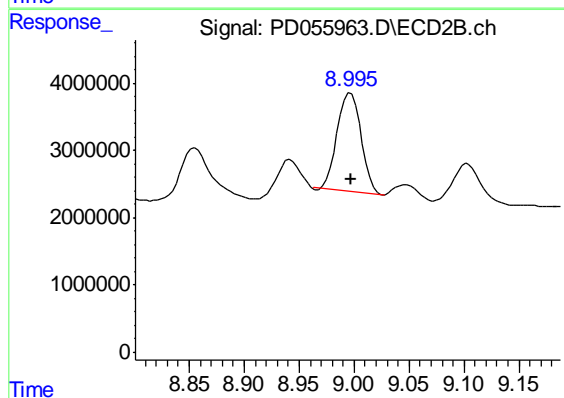
#26 Toxaphene-5  
 R.T.: 7.580 min  
 Delta R.T.: -0.023 min  
 Response: 13495386  
 Conc: 555.35 ng/ml



#27 Decachlorobiphenyl

R.T.: 7.962 min  
Delta R.T.: -0.001 min  
Response: 19462699  
Conc: 23.88 ng/ml

Instrument :  
ECD\_D  
ClientSampleId :  
C0AS7MS



#27 Decachlorobiphenyl

R.T.: 8.997 min  
Delta R.T.: 0.000 min  
Response: 22074044  
Conc: 19.44 ng/ml