

Data Path : Z:\pestpcbsrv\HPCHEM1\ECD_D\Data\PD111419\
 Data File : PD055982.D
 Signal(s) : Signal #1: ECD1A.ch Signal #2: ECD2B.ch
 Acq On : 14 Nov 2019 12:06
 Operator : SG\AJ
 Sample : INDB345
 Misc :
 ALS Vial : 14 Sample Multiplier: 1

Instrument :
 ECD_D
 ClientSampleId :
 INDB345

Integration File signal 1: autoint1.e
 Integration File signal 2: autoint2.e
 Quant Time: Nov 15 03:47:18 2019
 Quant Method : Z:\pestpcbsrv\HPCHEM1\ECD_D\Method\PD110319CLP.M
 Quant Title : GC Extractables
 QLast Update : Sat Nov 02 07:20:38 2019
 Response via : Initial Calibration
 Integrator: ChemStation

Volume Inj. : 1 µl
 Signal #1 Phase : ZB-MR1 Signal #2 Phase: ZB-MR1
 Signal #1 Info : 30M x 0.32mm x0.2 Signal #2 Info : 30M x 0.32mm x 0.50µm

	Compound	RT#1	RT#2	Resp#1	Resp#2	ng/ml	ng/ml

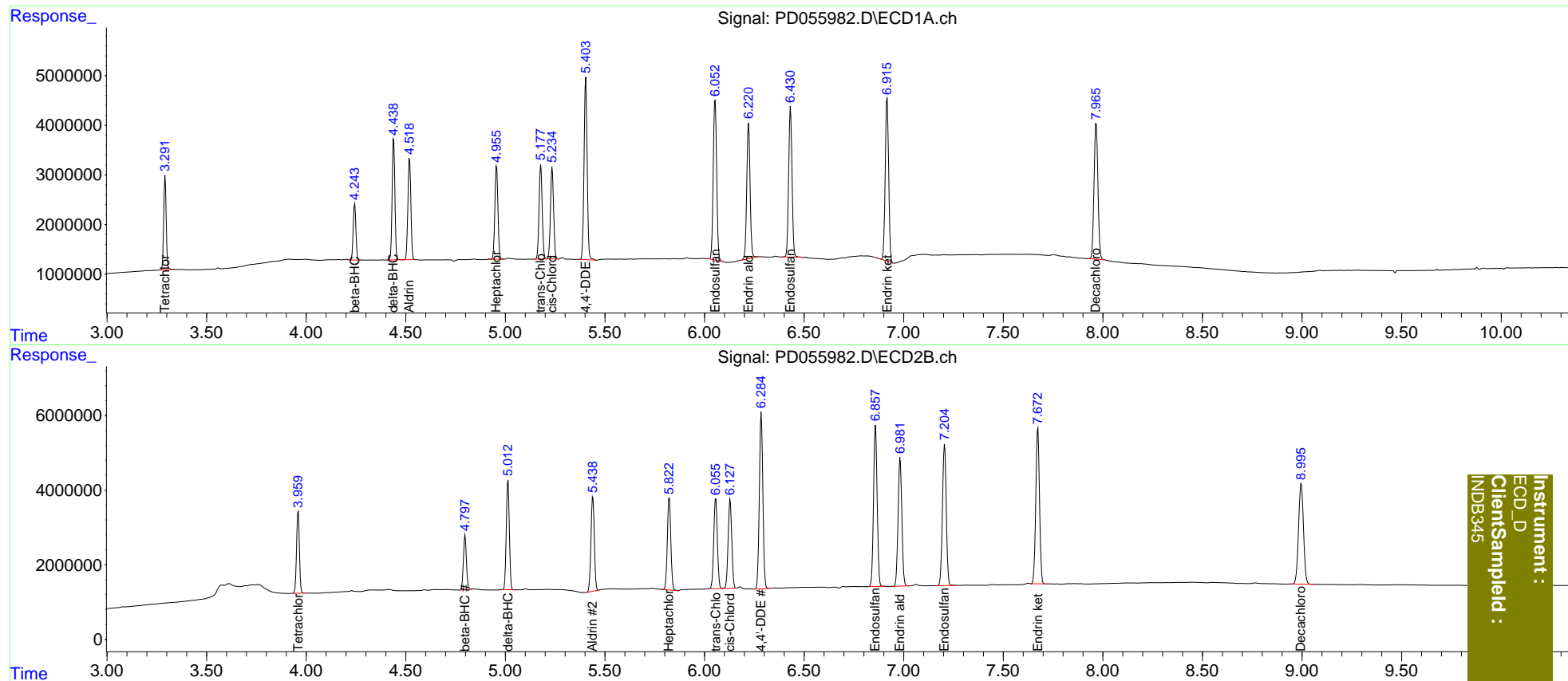
System Monitoring Compounds							
1)	SA Tetrachlo...	3.292	3.960	16720074	21964611	22.211	20.960
27)	SA Decachlor...	7.966	8.996	37192801	46343807	45.629	40.811
Target Compounds							
5)	MB Aldrin	4.519	5.440	21102552	29820213	22.777	21.733
6)	B beta-BHC	4.244	4.798	10625658	15428401	23.492	22.052
7)	B delta-BHC	4.440	5.014	23526847	31180965	23.052	23.653
8)	B Heptachlo...	4.956	5.823	20135227	29835780	22.551	22.108
10)	B trans-Chl...	5.178	6.057	20653218	30392882	22.777	21.306
11)	B cis-Chlor...	5.235	6.129	20234724	29830950	22.852	21.255
12)	B 4,4'-DDE	5.404	6.285	40328503	58043596	46.385	43.074
15)	B Endosulfa...	6.053	6.859	38797273	54426709	46.044	42.030
18)	B Endrin al...	6.222	6.982	31899276	45348240	44.653	41.764
19)	B Endosulfa...	6.432	7.205	35335479	50497876	45.035	41.885
21)	B Endrin ke...	6.917	7.674	39256403	54356586	44.321	41.211

(f)=RT Delta > 1/2 Window (#)=Amounts differ by > 25% (m)=manual int.

Data Path : Z:\pestpcbsrv\HPCHEM1\ECD_D\Data\PD111419\
 Data File : PD055982.D
 Signal(s) : Signal #1: ECD1A.ch Signal #2: ECD2B.ch
 Acq On : 14 Nov 2019 12:06
 Operator : SG\AJ
 Sample : INDB345
 Misc :
 ALS Vial : 14 Sample Multiplier: 1

Integration File signal 1: autoint1.e
 Integration File signal 2: autoint2.e
 Quant Time: Nov 15 03:47:18 2019
 Quant Method : Z:\pestpcbsrv\HPCHEM1\ECD_D\Method\PD110319CLP.M
 Quant Title : GC Extractables
 QLast Update : Sat Nov 02 07:20:38 2019
 Response via : Initial Calibration
 Integrator: ChemStation

Volume Inj. : 1 µl
 Signal #1 Phase : ZB-MR2 Signal #2 Phase: ZB-MR1
 Signal #1 Info : 30M x 0.32mm x0.2 Signal #2 Info : 30M x 0.32mm x 0.50µm



Instrument :
 ECD_D
 Client:Sampled :
 INDB345