

Data Path : Z:\pestpcbsrv\HPCHEM1\ECD_D\Data\PD111424\
 Data File : PD086668.D
 Signal(s) : Signal #1: ECD1A.ch Signal #2: ECD2B.ch
 Acq On : 13 Nov 2024 21:33
 Operator : AR\AJ
 Sample : P4724-13
 Misc :
 ALS Vial : 37 Sample Multiplier: 1

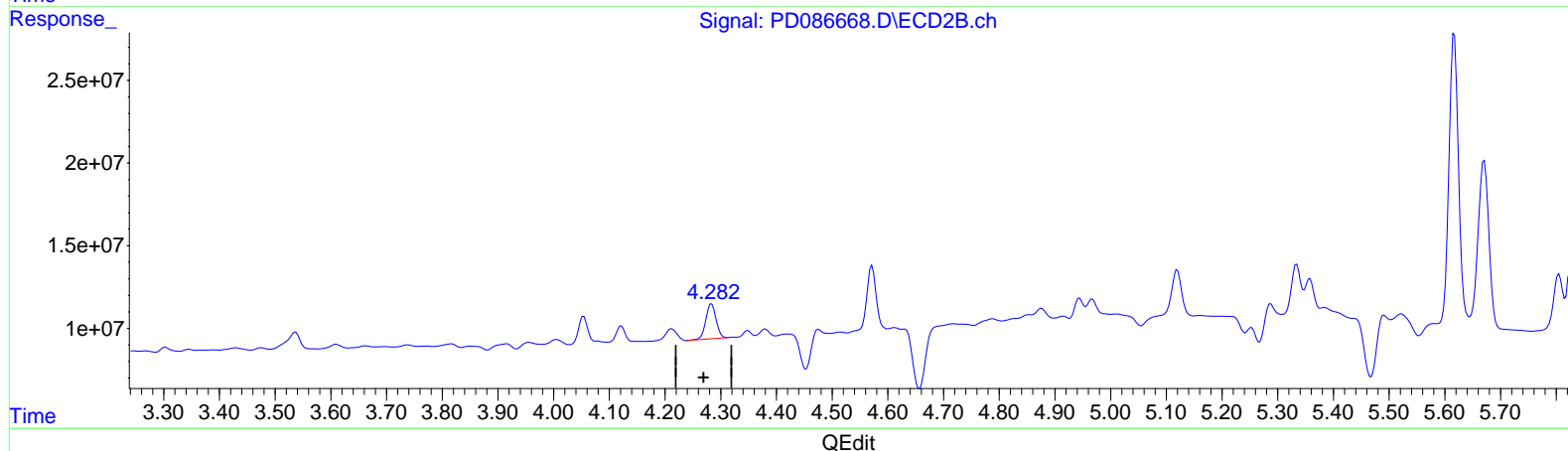
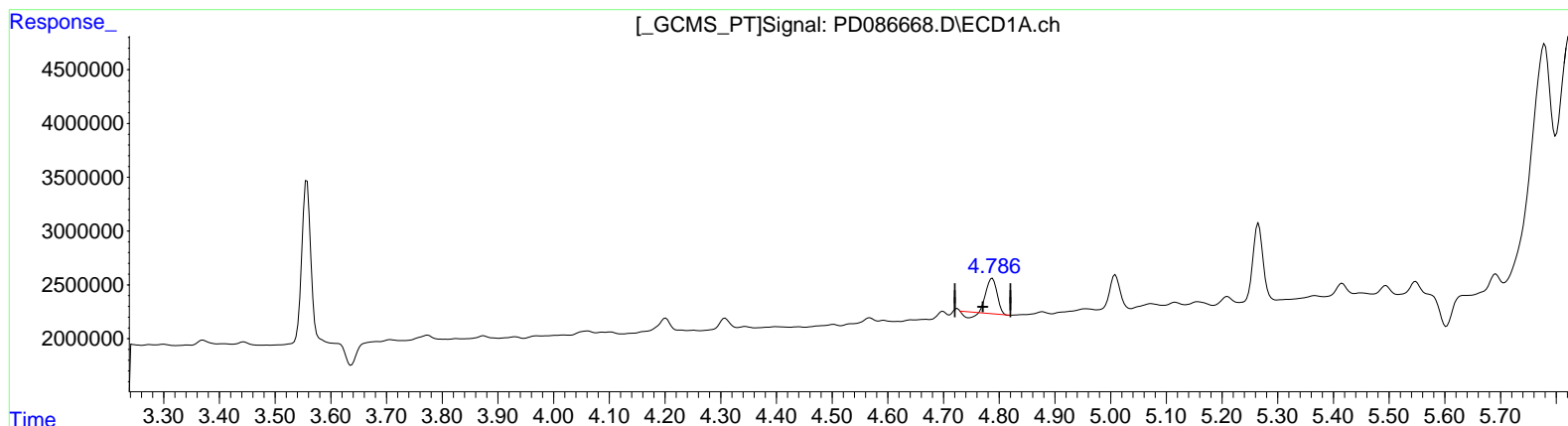
Instrument :
 ECD_D
 ClientSampleId :
 BH9C4

Manual Integrations APPROVED

Reviewed By :Yogesh Patel 11/14/2024
 Supervised By :Ankita Jodhani 11/15/2024

Integration File signal 1: autoint1.e
 Integration File signal 2: autoint2.e
 Quant Time: Nov 14 04:25:21 2024
 Quant Method : Z:\pestpcbsrv\HPCHEM1\ECD_D\Method\PD111424CLP.M
 Quant Title : GC Extractables
 QLast Update : Thu Nov 14 03:38:57 2024
 Response via : Initial Calibration
 Integrator: ChemStation

Volume Inj. : 1 µl
 Signal #1 Phase : ZB-MR1 Signal #2 Phase: ZB-MR2
 Signal #1 Info : 30M x 0.32mm x 0.5 Signal #2 Info : 30M x 0.32mm x 0.25µm



(7) delta-BHC (B)
 4.788min 1.343 ng/ml
 response 3795200

(7) delta-BHC #2 (B)
 4.284min 1.783 ng/ml
 response 27195042

Data Path : Z:\pestpcbsrv\HPCHEM1\ECD_D\Data\PD111424\
 Data File : PD086668.D
 Signal(s) : Signal #1: ECD1A.ch Signal #2: ECD2B.ch
 Acq On : 13 Nov 2024 21:33
 Operator : AR\AJ
 Sample : P4724-13
 Misc :
 ALS Vial : 37 Sample Multiplier: 1

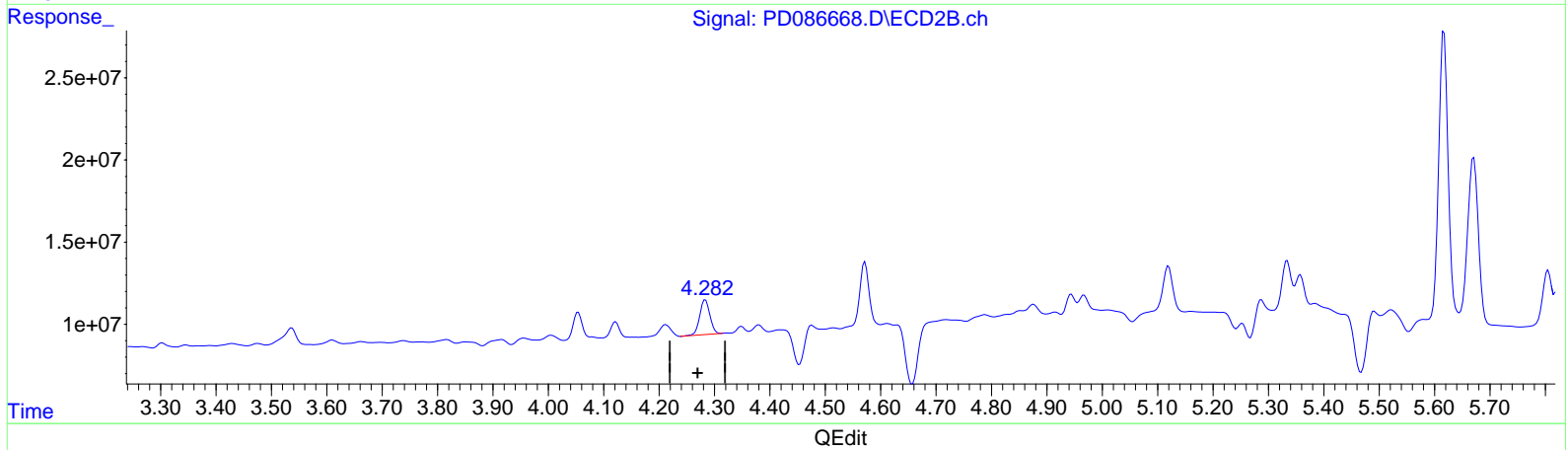
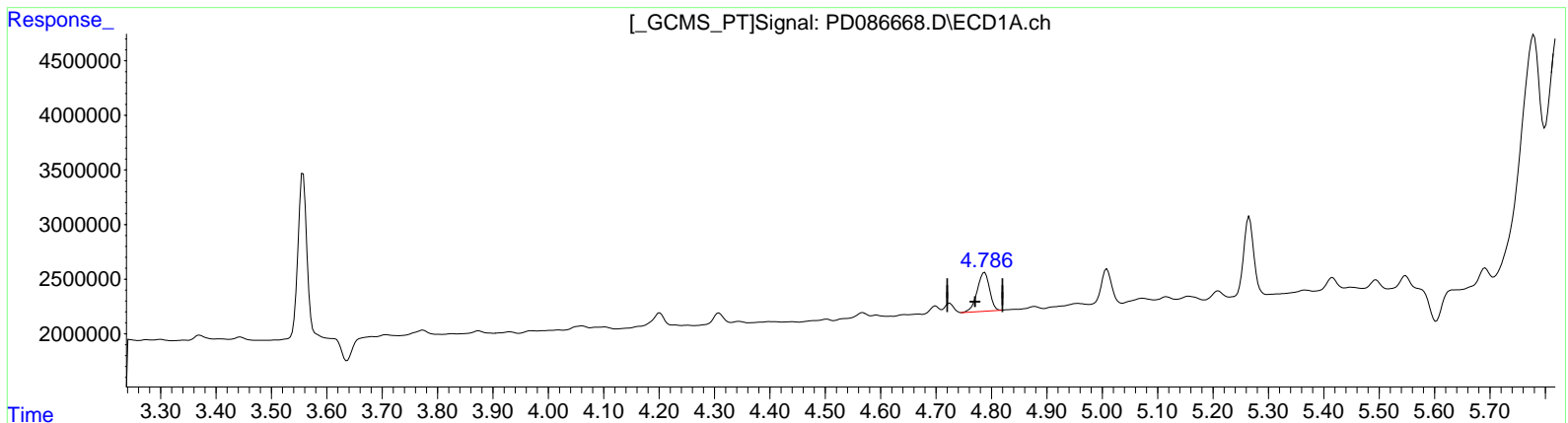
Instrument :
 ECD_D
 ClientSampleId :
 BH9C4

Manual Integrations APPROVED

Reviewed By :Yogesh Patel 11/14/2024
 Supervised By :Ankita Jodhani 11/15/2024

Integration File signal 1: autoint1.e
 Integration File signal 2: autoint2.e
 Quant Time: Nov 14 04:25:21 2024
 Quant Method : Z:\pestpcbsrv\HPCHEM1\ECD_D\Method\PD111424CLP.M
 Quant Title : GC Extractables
 QLast Update : Thu Nov 14 03:38:57 2024
 Response via : Initial Calibration
 Integrator: ChemStation

Volume Inj. : 1 µl
 Signal #1 Phase : ZB-MR1 Signal #2 Phase: ZB-MR2
 Signal #1 Info : 30M x 0.32mm x0.5 Signal #2 Info : 30M x 0.32mm x 0.25µm



(7) delta-BHC (B)
 4.786min 1.961 ng/ml m
 response 5542538

(7) delta-BHC #2 (B)
 4.284min 1.783 ng/ml
 response 27195042

Data Path : Z:\pestpcbsrv\HPCHEM1\ECD_D\Data\PD111424\
 Data File : PD086668.D
 Signal(s) : Signal #1: ECD1A.ch Signal #2: ECD2B.ch
 Acq On : 13 Nov 2024 21:33
 Operator : AR\AJ
 Sample : P4724-13
 Misc :
 ALS Vial : 37 Sample Multiplier: 1

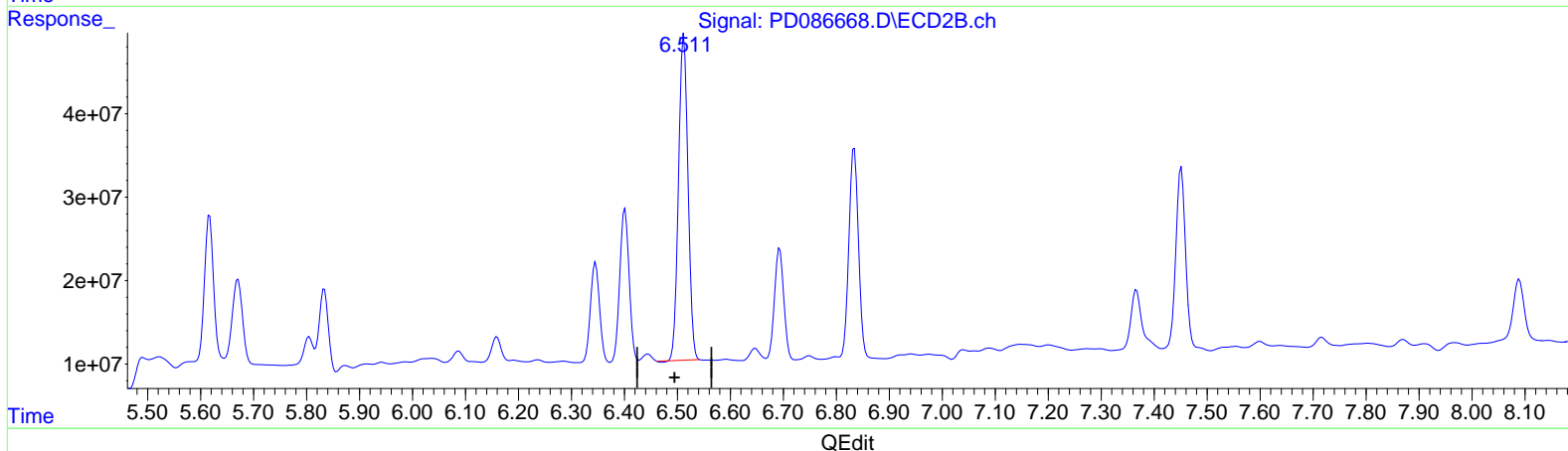
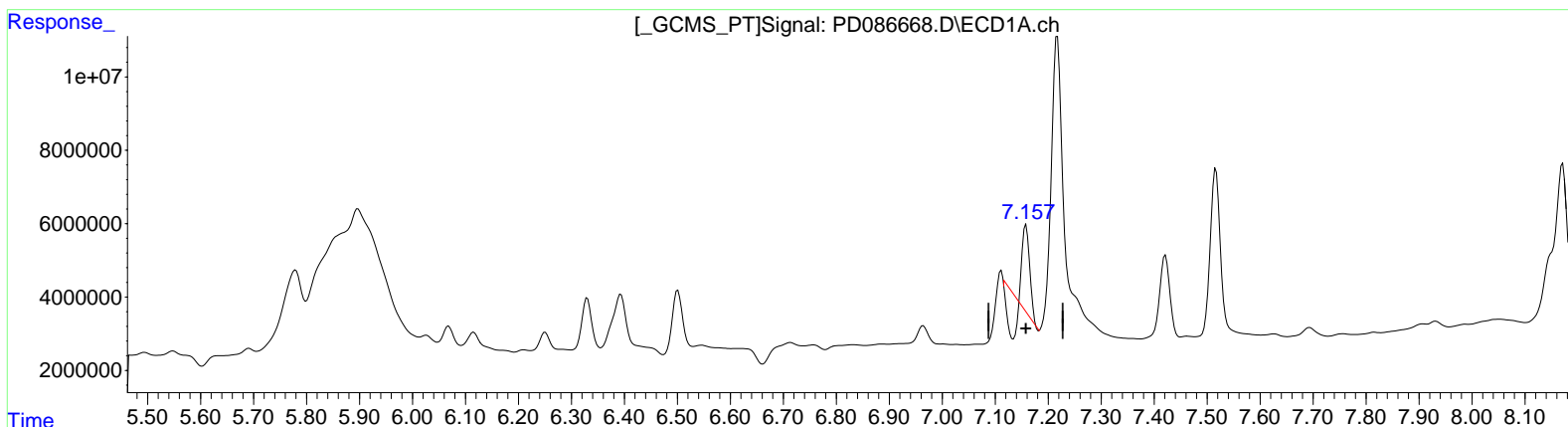
Instrument :
 ECD_D
 ClientSampleId :
 BH9C4

Manual Integrations APPROVED

Reviewed By :Yogesh Patel 11/14/2024
 Supervised By :Ankita Jodhani 11/15/2024

Integration File signal 1: autoint1.e
 Integration File signal 2: autoint2.e
 Quant Time: Nov 14 04:25:21 2024
 Quant Method : Z:\pestpcbsrv\HPCHEM1\ECD_D\Method\PD111424CLP.M
 Quant Title : GC Extractables
 QLast Update : Thu Nov 14 03:38:57 2024
 Response via : Initial Calibration
 Integrator: ChemStation

Volume Inj. : 1 µl
 Signal #1 Phase : ZB-MR1 Signal #2 Phase: ZB-MR2
 Signal #1 Info : 30M x 0.32mm x0.5 Signal #2 Info : 30M x 0.32mm x 0.25µm



(19) Endosulfan Sulfate (B)
 7.158min 4.545 ng/ml
 response 9666896

(19) Endosulfan Sulfate #2 (B)
 6.512min 40.802 ng/ml
 response 482472229

Data Path : Z:\pestpcbsrv\HPCHEM1\ECD_D\Data\PD111424\
 Data File : PD086668.D
 Signal(s) : Signal #1: ECD1A.ch Signal #2: ECD2B.ch
 Acq On : 13 Nov 2024 21:33
 Operator : AR\AJ
 Sample : P4724-13
 Misc :
 ALS Vial : 37 Sample Multiplier: 1

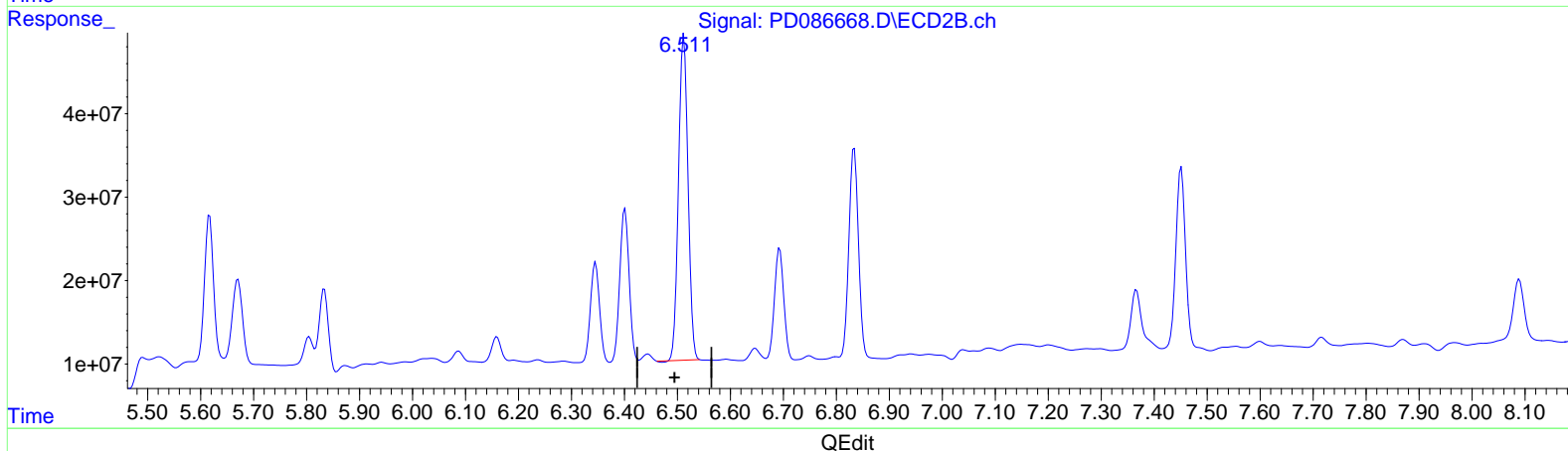
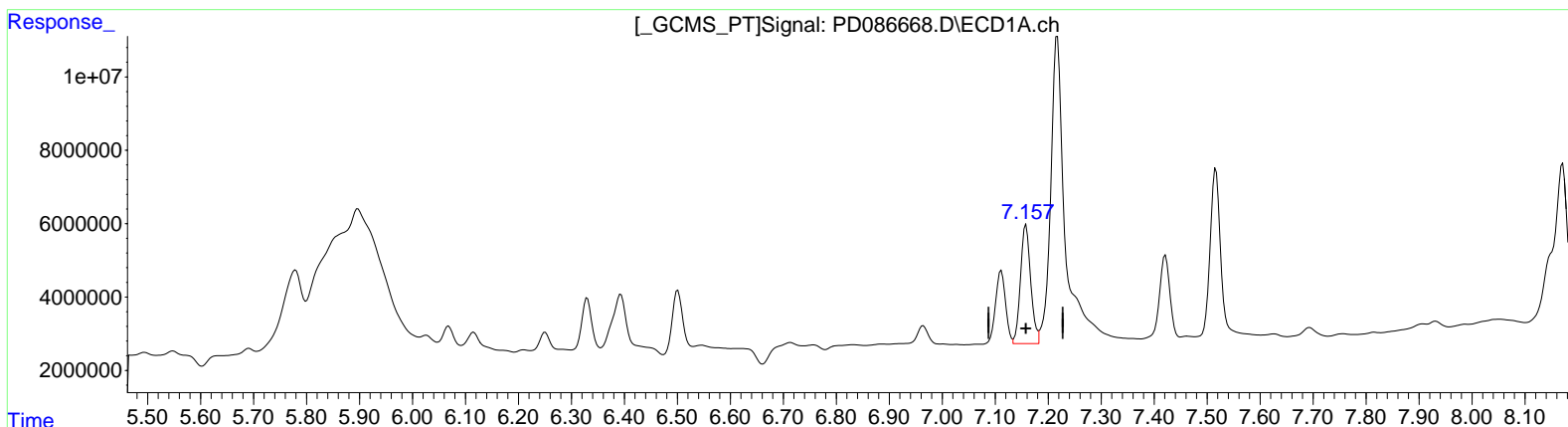
Instrument :
 ECD_D
 ClientSampleId :
 BH9C4

Manual Integrations APPROVED

Reviewed By :Yogesh Patel 11/14/2024
 Supervised By :Ankita Jodhani 11/15/2024

Integration File signal 1: autoint1.e
 Integration File signal 2: autoint2.e
 Quant Time: Nov 14 04:25:21 2024
 Quant Method : Z:\pestpcbsrv\HPCHEM1\ECD_D\Method\PD111424CLP.M
 Quant Title : GC Extractables
 QLast Update : Thu Nov 14 03:38:57 2024
 Response via : Initial Calibration
 Integrator: ChemStation

Volume Inj. : 1 µl
 Signal #1 Phase : ZB-MR1 Signal #2 Phase: ZB-MR2
 Signal #1 Info : 30M x 0.32mm x0.5 Signal #2 Info : 30M x 0.32mm x 0.25µm



(19) Endosulfan Sulfate (B)
 7.157min 20.604 ng/ml m
 response 43820801

(19) Endosulfan Sulfate #2 (B)
 6.512min 40.802 ng/ml
 response 482472229