

Data Path : Z:\pestpcbsrv\HPCHEM1\ECD_D\Data\PD111425\
 Data File : PD091170.D
 Signal(s) : Signal #1: ECD1A.ch Signal #2: ECD2B.ch
 Acq On : 14 Nov 2025 12:57
 Operator : AR\AJ
 Sample : Q3628-01
 Misc :
 ALS Vial : 9 Sample Multiplier: 1

Instrument :
 ECD_D
 ClientSampleId :
 TP-5

Integration File signal 1: autoint1.e
 Integration File signal 2: autoint2.e
 Quant Time: Nov 15 01:08:12 2025
 Quant Method : Z:\pestpcbsrv\HPCHEM1\ECD_D\Method\PD101725.M
 Quant Title : GC Extractables
 QLast Update : Fri Oct 17 17:43:28 2025
 Response via : Initial Calibration
 Integrator: ChemStation

Volume Inj. : 1 µl
 Signal #1 Phase : ZB-MR2 Signal #2 Phase: ZB-MR2
 Signal #1 Info : 30M x 0.32mm x0.5 Signal #2 Info : 30M x 0.32mm x 0.25µm

	Compound	RT#1	RT#2	Resp#1	Resp#2	ng/ml	ng/ml

System Monitoring Compounds							
1)	SA Tetrachlo...	3.544	2.890	99980071	704.8E6	32.105	23.669 #
28)	SA Decachlor...	9.064	8.074	71304937	515.5E6	15.243	17.019
Target Compounds							
2)	A alpha-BHC	3.992	3.398	1589151	2057359	0.221	0.040 #
3)	MA gamma-BHC...	0.000	3.739f	0	9195446	N.D.	0.195 #
4)	MA Heptachlor	4.939f	4.089	7585761	17668648	1.357	0.396 #
6)	B beta-BHC	4.511	4.040f	3717925	24969979	1.419	1.259
7)	B delta-BHC	4.772	4.270	17541167	10114851	2.594	0.212 #
8)	B Heptachlo...	5.680	4.878	4204800	21400859	0.726	0.502 #
9)	A Endosulfan I	6.065	0.000	515808	0	0.093	N.D. #
10)	B gamma-Chl...	5.938	5.131	5373427	72962854	0.906	1.623 #
11)	B alpha-Chl...	6.022	5.195	11476577	113.3E6	1.857	2.627 #
12)	B 4,4'-DDE	6.192	5.380	632531	13535397	0.119	0.309 #
13)	MA Dieldrin	6.344	5.518	1202133	49834071	0.206	1.128 #
14)	MA Endrin	6.568	5.796f	1046064	119.4E6	0.211	2.948 #
15)	B Endosulfa...	6.782	6.089f	1179507	53954811	0.236	1.437 #
16)	A 4,4'-DDD	6.687	5.940f	3834477	8723812	0.946	0.239 #
17)	MA 4,4'-DDT	7.015	6.188	1433466	36392828	0.349	1.038 #
18)	B Endrin al...	6.912	6.266f	1735299	11392025	0.474	0.411
20)	A Methoxychlor	7.487	6.742	498966	10599552	0.235	0.608 #
21)	B Endrin ke...	7.611	6.992	2118858	16325422	0.436	0.433
22)	Mirex	8.104	7.182	773490	2367040	0.242	0.092 #
23)	Chlordane-1	4.683f	3.908	3465241	17788590	18.337	14.273
24)	Chlordane-2	5.258f	4.459	1067684	10622096	5.528	8.143 #
25)	Chlordane-3	5.938	5.131	5373427	72962854	7.045	18.749 #
26)	Chlordane-4	6.022	5.195	11476577	113.3E6	11.845	33.912 #
27)	Chlordane-5	6.862	6.089	1779623	53954811	11.844	36.554 #

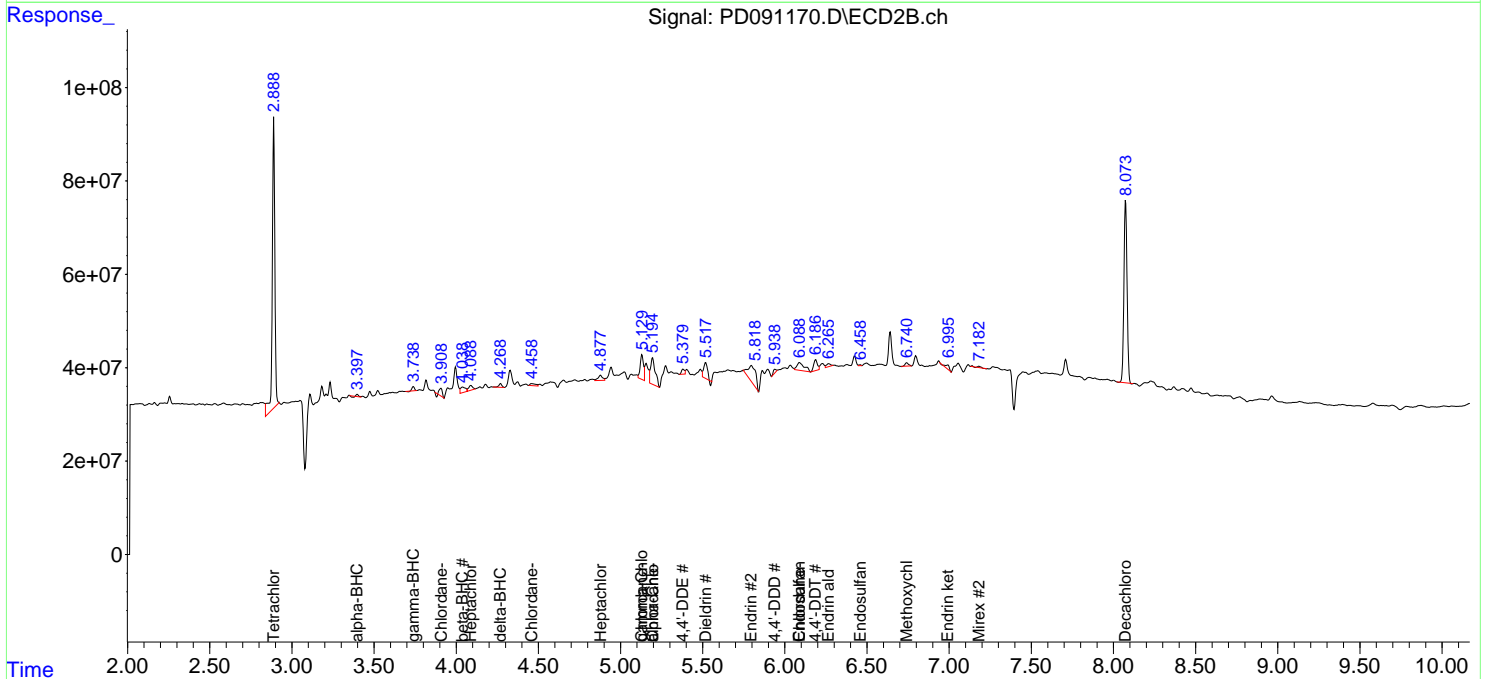
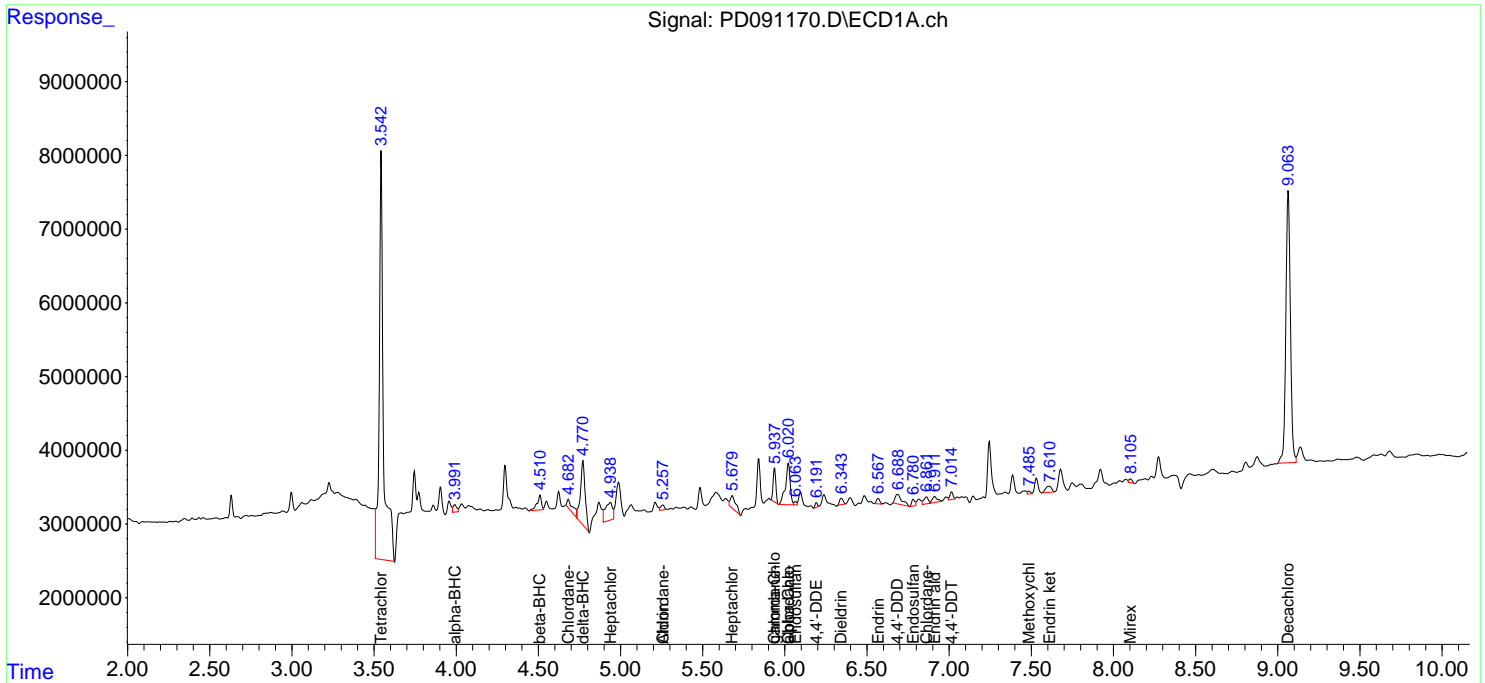
(f)=RT Delta > 1/2 Window (#)=Amounts differ by > 25% (m)=manual int.

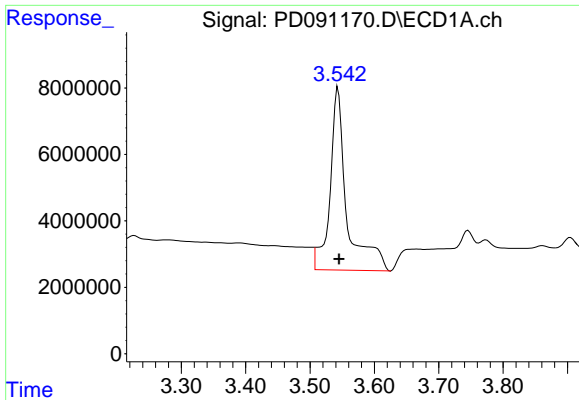
Data Path : Z:\pestpcbsrv\HPCHEM1\ECD_D\Data\PD111425\
 Data File : PD091170.D
 Signal(s) : Signal #1: ECD1A.ch Signal #2: ECD2B.ch
 Acq On : 14 Nov 2025 12:57
 Operator : AR\AJ
 Sample : Q3628-01
 Misc :
 ALS Vial : 9 Sample Multiplier: 1

Instrument :
 ECD_D
 ClientSampleId :
 TP-5

Integration File signal 1: autoint1.e
 Integration File signal 2: autoint2.e
 Quant Time: Nov 15 01:08:12 2025
 Quant Method : Z:\pestpcbsrv\HPCHEM1\ECD_D\Method\PD101725.M
 Quant Title : GC Extractables
 QLast Update : Fri Oct 17 17:43:28 2025
 Response via : Initial Calibration
 Integrator: ChemStation

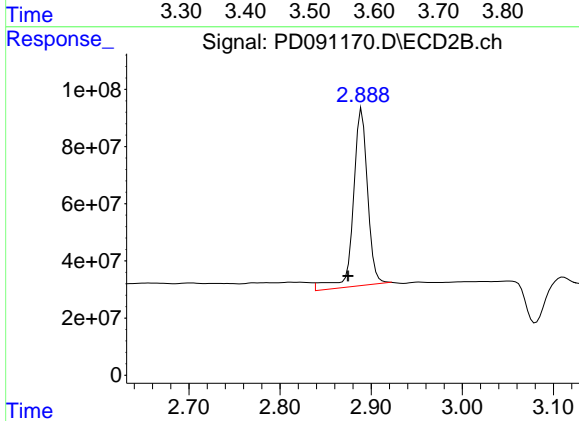
Volume Inj. : 1 µl
 Signal #1 Phase : ZB-MR1 Signal #2 Phase: ZB-MR2
 Signal #1 Info : 30M x 0.32mm x0.5 Signal #2 Info : 30M x 0.32mm x 0.25µm



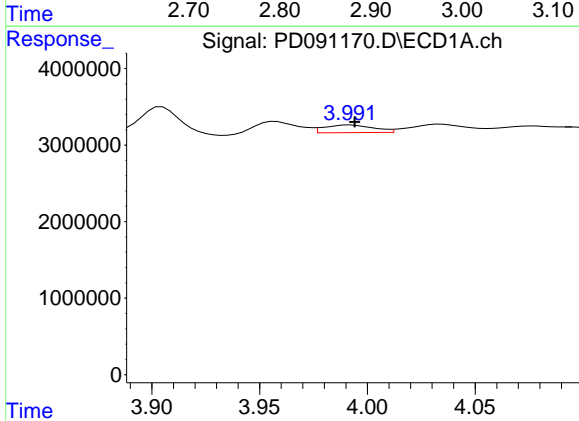


#1 Tetrachloro-m-xylene
 R.T.: 3.544 min
 Delta R.T.: -0.001 min
 Response: 99980071
 Conc: 32.10 ng/ml

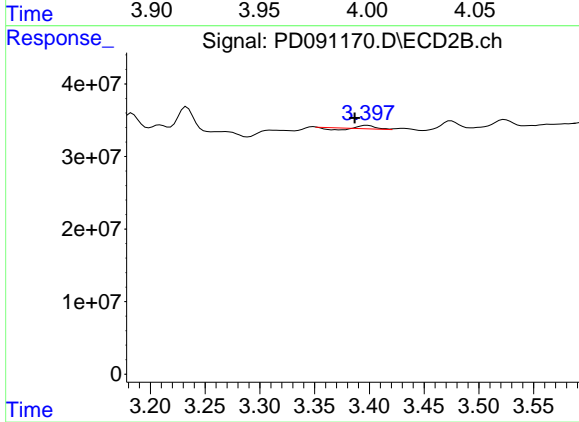
Instrument :
 ECD_D
 ClientSampleId :
 TP-5



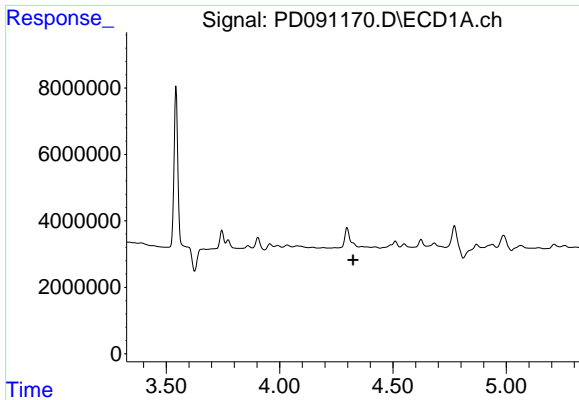
#1 Tetrachloro-m-xylene
 R.T.: 2.890 min
 Delta R.T.: 0.015 min
 Response: 704798867
 Conc: 23.67 ng/ml



#2 alpha-BHC
 R.T.: 3.992 min
 Delta R.T.: -0.002 min
 Response: 1589151
 Conc: 0.22 ng/ml



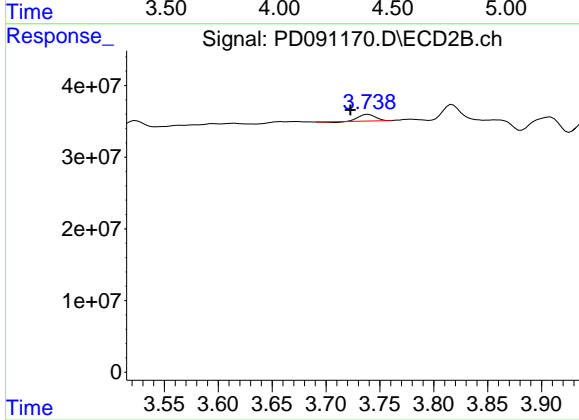
#2 alpha-BHC
 R.T.: 3.398 min
 Delta R.T.: 0.012 min
 Response: 2057359
 Conc: 0.04 ng/ml



#3 gamma-BHC (Lindane)

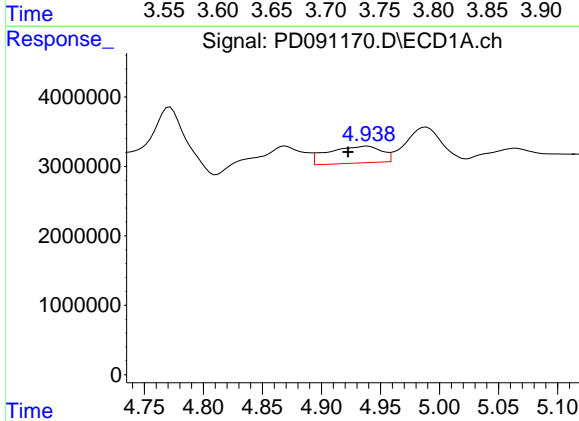
R.T.: 0.000 min
 Exp R.T.: 4.325 min
 Response: 0
 Conc: N.D.

Instrument :
 ECD_D
 ClientSampleId :
 TP-5



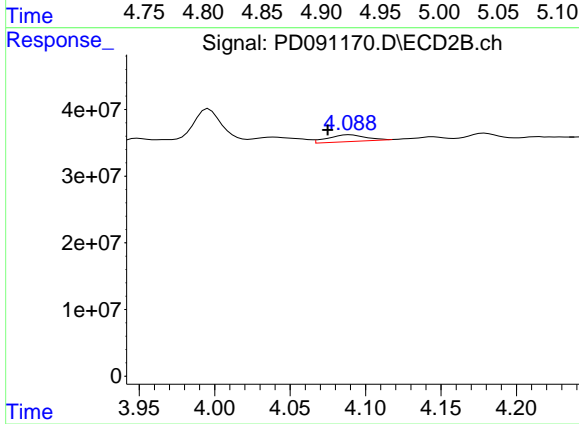
#3 gamma-BHC (Lindane)

R.T.: 3.739 min
 Delta R.T.: 0.017 min
 Response: 9195446
 Conc: 0.19 ng/ml



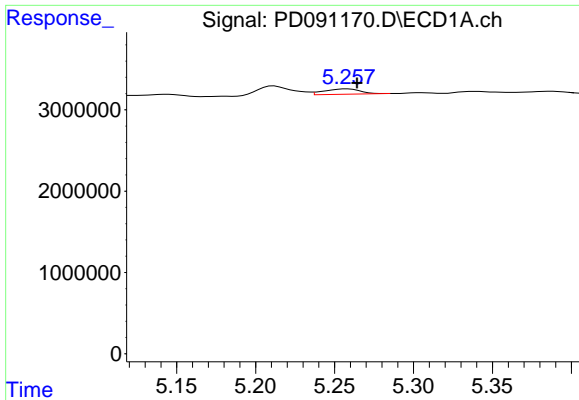
#4 Heptachlor

R.T.: 4.939 min
 Delta R.T.: 0.016 min
 Response: 7585761
 Conc: 1.36 ng/ml



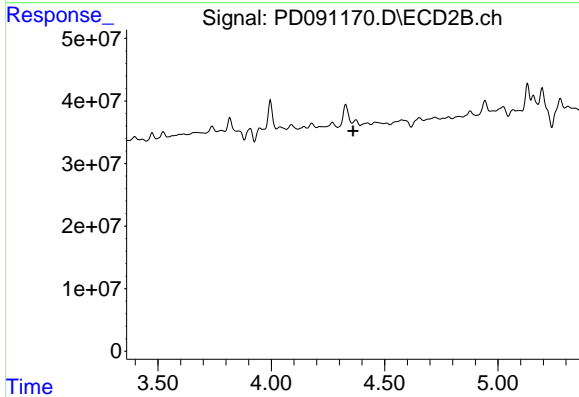
#4 Heptachlor

R.T.: 4.089 min
 Delta R.T.: 0.014 min
 Response: 17668648
 Conc: 0.40 ng/ml

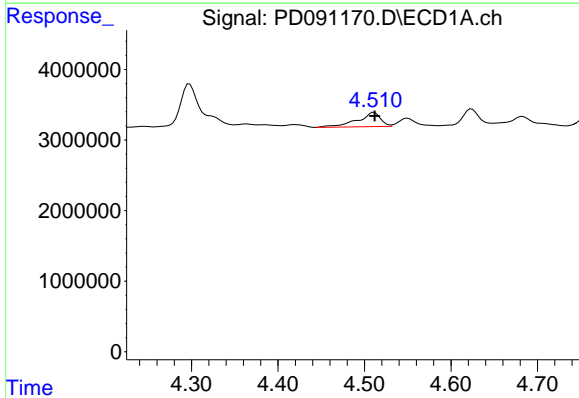


#5 Aldrin
 R.T.: 5.258 min
 Delta R.T.: -0.006 min
 Response: 1067684
 Conc: 0.16 ng/ml

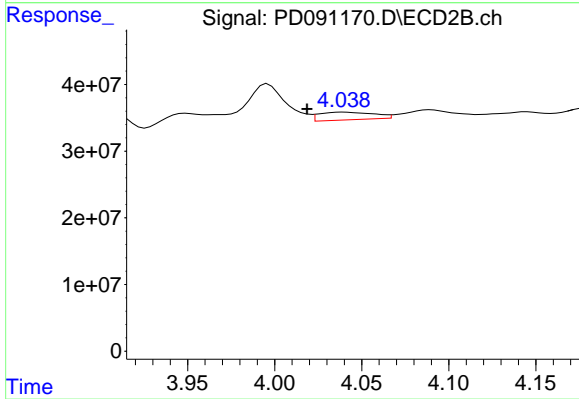
Instrument :
 ECD_D
 ClientSampleId :
 TP-5



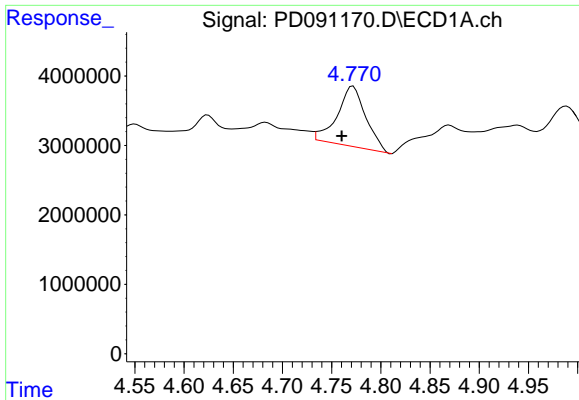
#5 Aldrin
 R.T.: 4.374 min
 Delta R.T.: 0.014 min
 Response: -18462539
 Conc: N.D.



#6 beta-BHC
 R.T.: 4.511 min
 Delta R.T.: 0.000 min
 Response: 3717925
 Conc: 1.42 ng/ml



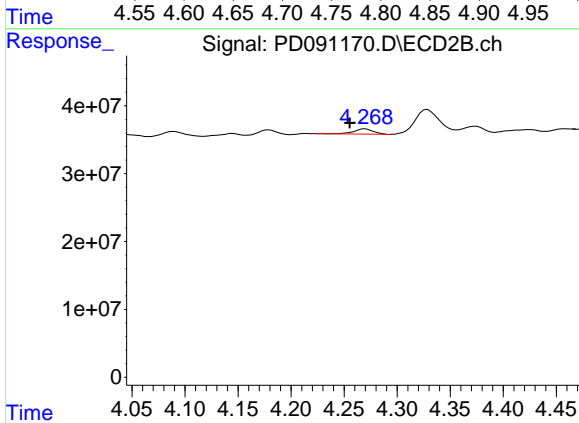
#6 beta-BHC
 R.T.: 4.040 min
 Delta R.T.: 0.021 min
 Response: 24969979
 Conc: 1.26 ng/ml



#7 delta-BHC

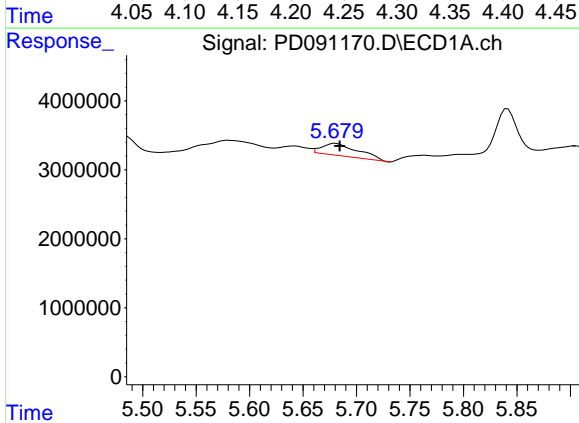
R.T.: 4.772 min
 Delta R.T.: 0.012 min
 Response: 17541167
 Conc: 2.59 ng/ml

Instrument :
 ECD_D
 ClientSampleId :
 TP-5



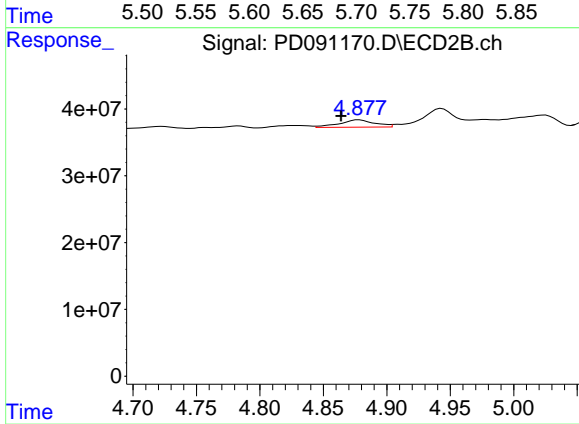
#7 delta-BHC

R.T.: 4.270 min
 Delta R.T.: 0.015 min
 Response: 10114851
 Conc: 0.21 ng/ml



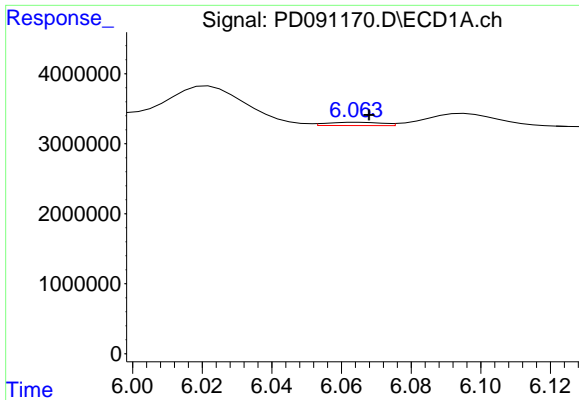
#8 Heptachlor epoxide

R.T.: 5.680 min
 Delta R.T.: -0.004 min
 Response: 4204800
 Conc: 0.73 ng/ml



#8 Heptachlor epoxide

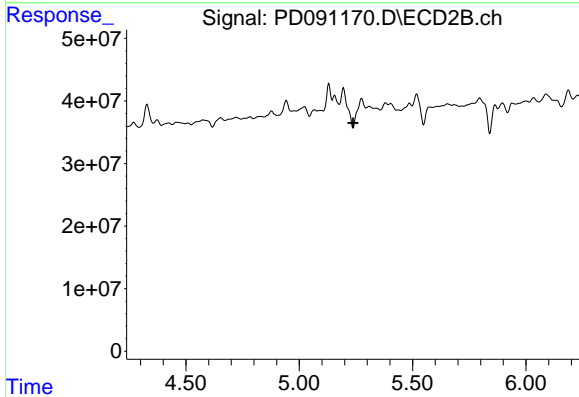
R.T.: 4.878 min
 Delta R.T.: 0.014 min
 Response: 21400859
 Conc: 0.50 ng/ml



#9 Endosulfan I

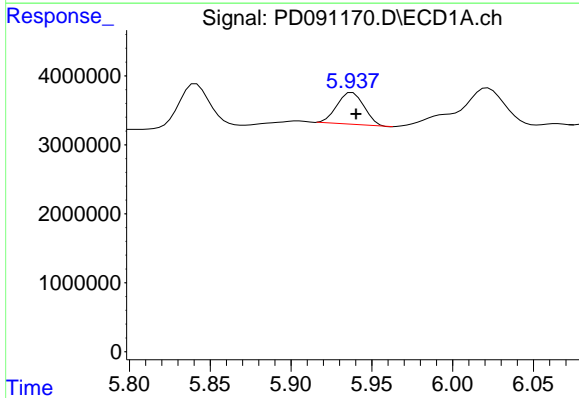
R.T.: 6.065 min
 Delta R.T.: -0.003 min
 Response: 515808
 Conc: 0.09 ng/ml

Instrument :
 ECD_D
 ClientSampleId :
 TP-5



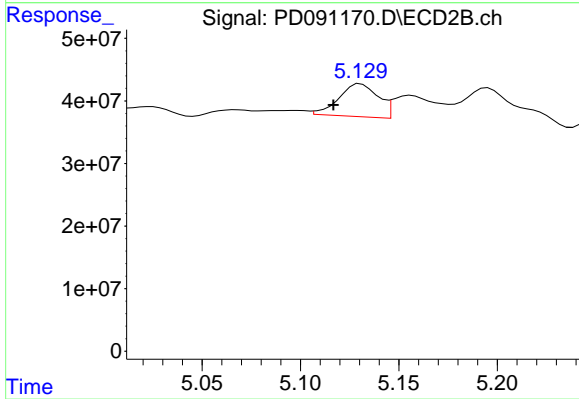
#9 Endosulfan I

R.T.: 0.000 min
 Exp R.T. : 5.238 min
 Response: 0
 Conc: N.D.



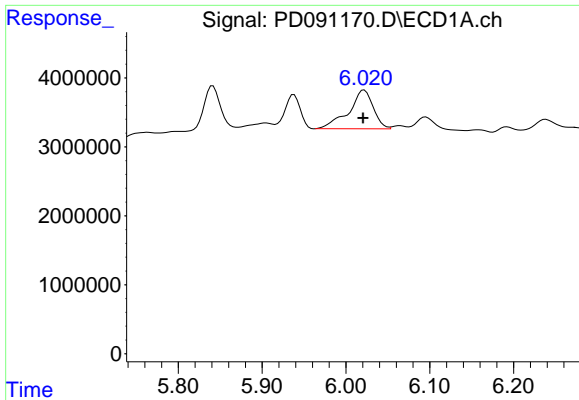
#10 gamma-Chlordane

R.T.: 5.938 min
 Delta R.T.: -0.002 min
 Response: 5373427
 Conc: 0.91 ng/ml



#10 gamma-Chlordane

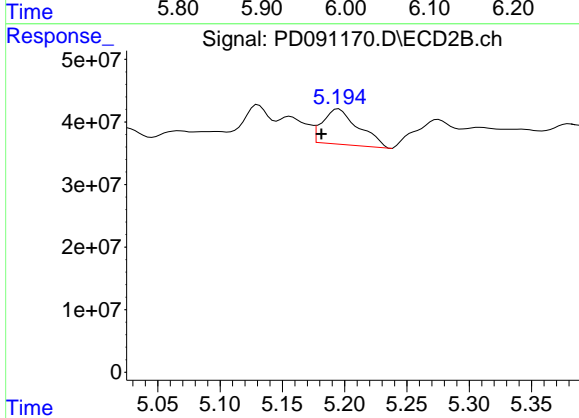
R.T.: 5.131 min
 Delta R.T.: 0.014 min
 Response: 72962854
 Conc: 1.62 ng/ml



#11 alpha-Chlordane

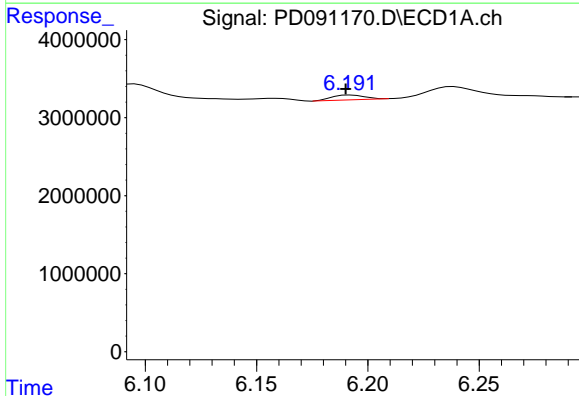
R.T.: 6.022 min
 Delta R.T.: 0.001 min
 Response: 11476577
 Conc: 1.86 ng/ml

Instrument :
 ECD_D
 ClientSampleId :
 TP-5



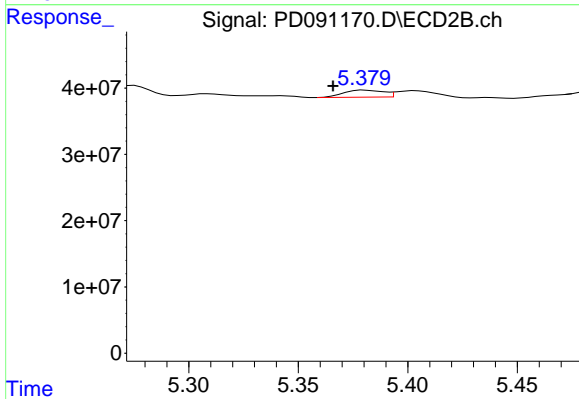
#11 alpha-Chlordane

R.T.: 5.195 min
 Delta R.T.: 0.014 min
 Response: 113307920
 Conc: 2.63 ng/ml



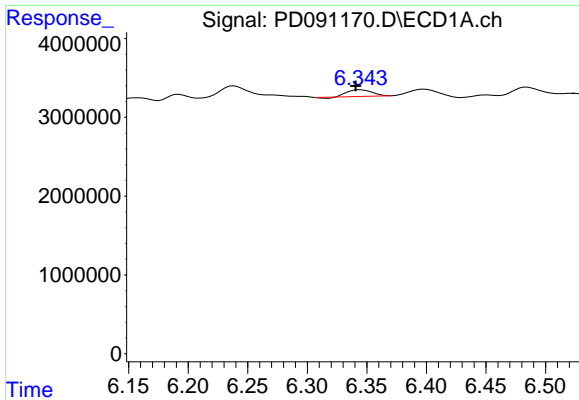
#12 4,4'-DDE

R.T.: 6.192 min
 Delta R.T.: 0.002 min
 Response: 632531
 Conc: 0.12 ng/ml



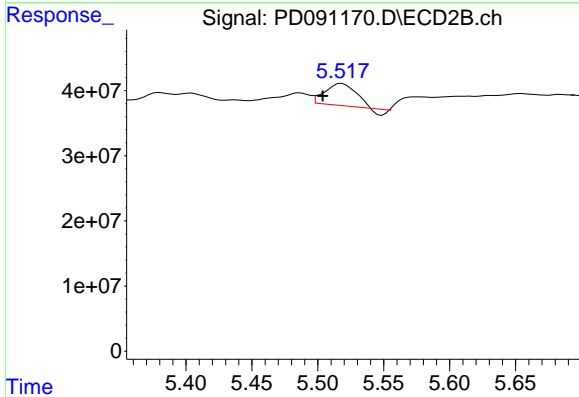
#12 4,4'-DDE

R.T.: 5.380 min
 Delta R.T.: 0.014 min
 Response: 13535397
 Conc: 0.31 ng/ml

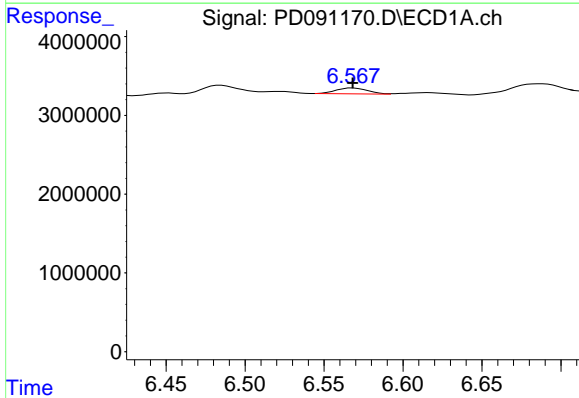


#13 Dieldrin
 R.T.: 6.344 min
 Delta R.T.: 0.004 min
 Response: 1202133
 Conc: 0.21 ng/ml

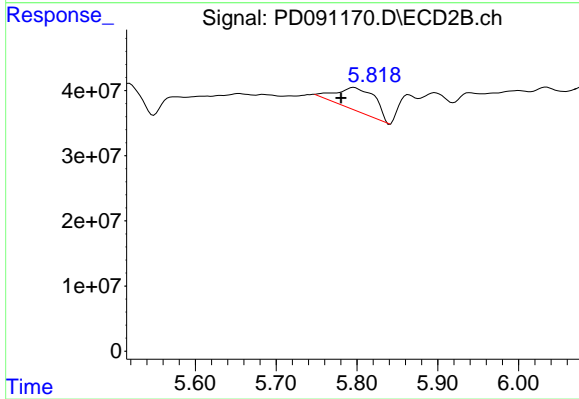
Instrument : ECD_D
 ClientSampleId : TP-5



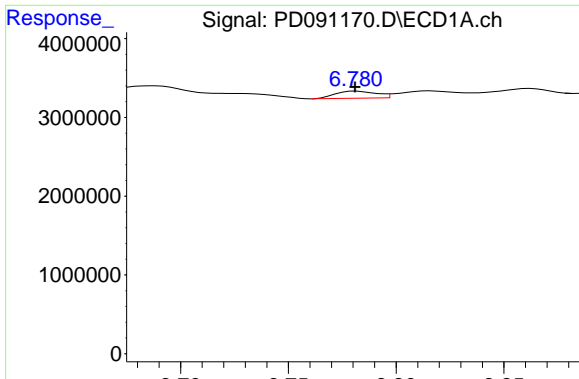
#13 Dieldrin
 R.T.: 5.518 min
 Delta R.T.: 0.015 min
 Response: 49834071
 Conc: 1.13 ng/ml



#14 Endrin
 R.T.: 6.568 min
 Delta R.T.: 0.000 min
 Response: 1046064
 Conc: 0.21 ng/ml



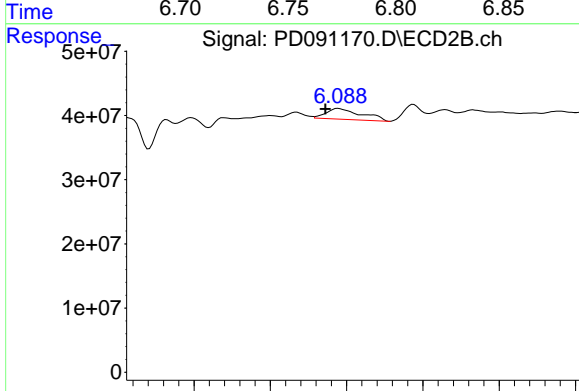
#14 Endrin
 R.T.: 5.796 min
 Delta R.T.: 0.016 min
 Response: 119378672
 Conc: 2.95 ng/ml



#15 Endosulfan II

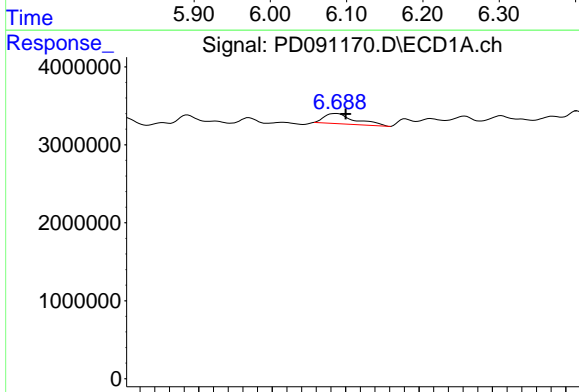
R.T.: 6.782 min
 Delta R.T.: 0.000 min
 Response: 1179507
 Conc: 0.24 ng/ml

Instrument :
 ECD_D
 ClientSampleId :
 TP-5



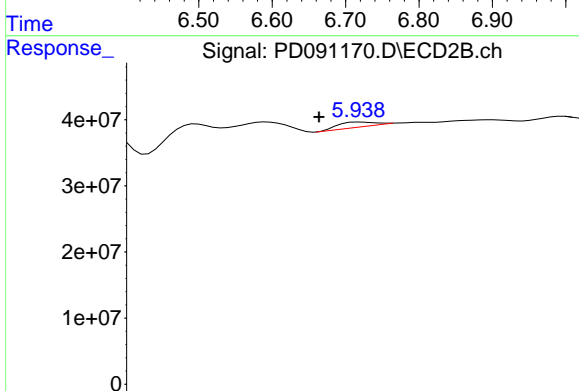
#15 Endosulfan II

R.T.: 6.089 min
 Delta R.T.: 0.017 min
 Response: 53954811
 Conc: 1.44 ng/ml



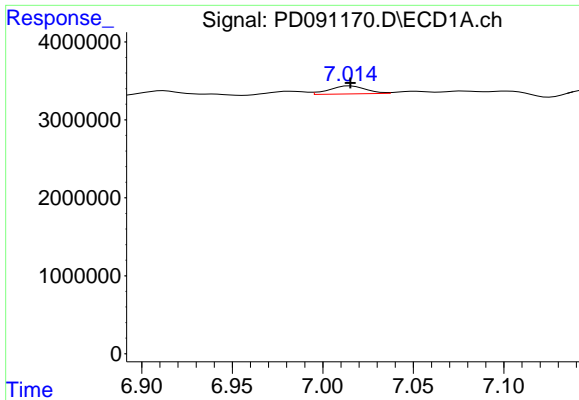
#16 4,4'-DDD

R.T.: 6.687 min
 Delta R.T.: -0.013 min
 Response: 3834477
 Conc: 0.95 ng/ml



#16 4,4'-DDD

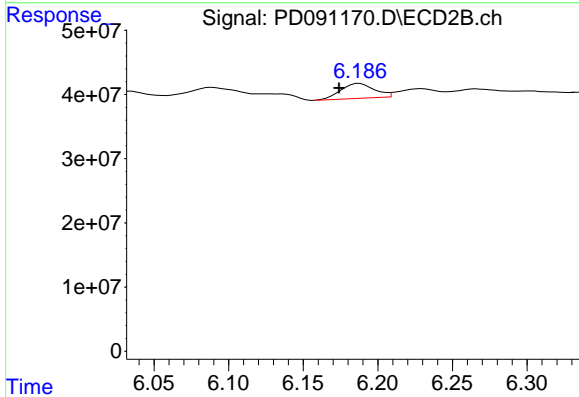
R.T.: 5.940 min
 Delta R.T.: 0.019 min
 Response: 8723812
 Conc: 0.24 ng/ml



#17 4,4'-DDT

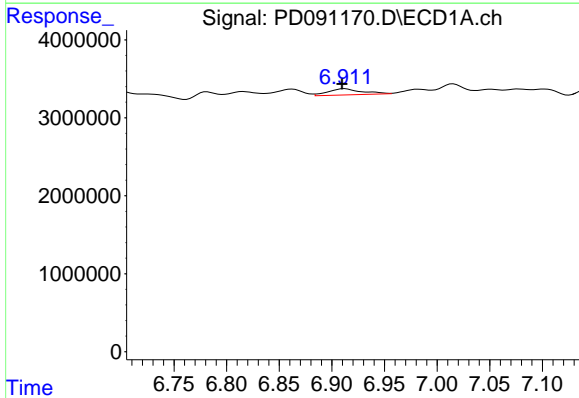
R.T.: 7.015 min
 Delta R.T.: 0.000 min
 Response: 1433466
 Conc: 0.35 ng/ml

Instrument :
 ECD_D
 ClientSampleId :
 TP-5



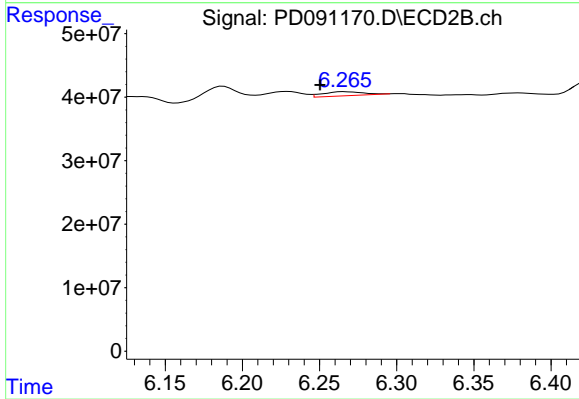
#17 4,4'-DDT

R.T.: 6.188 min
 Delta R.T.: 0.014 min
 Response: 36392828
 Conc: 1.04 ng/ml



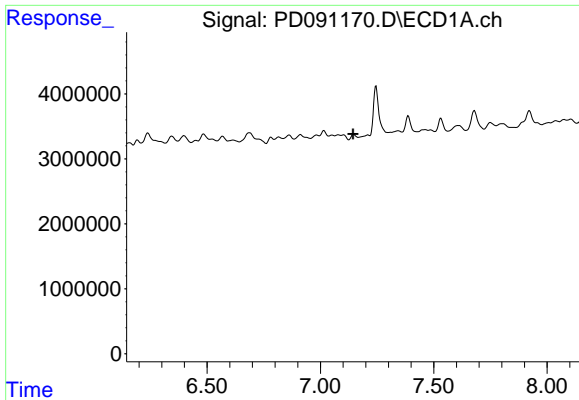
#18 Endrin aldehyde

R.T.: 6.912 min
 Delta R.T.: 0.002 min
 Response: 1735299
 Conc: 0.47 ng/ml



#18 Endrin aldehyde

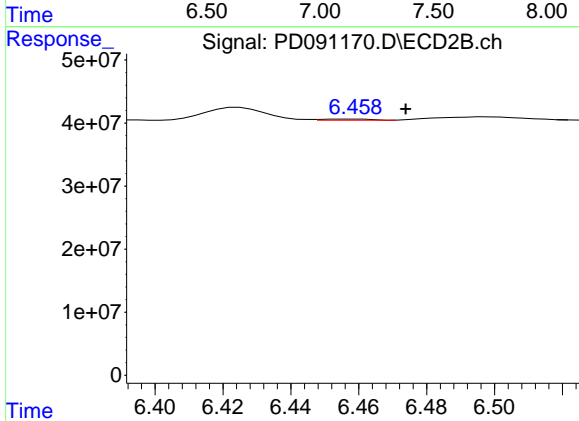
R.T.: 6.266 min
 Delta R.T.: 0.016 min
 Response: 11392025
 Conc: 0.41 ng/ml



#19 Endosulfan Sulfate

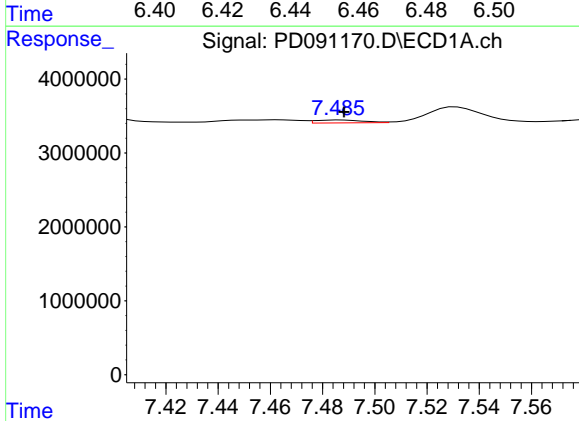
R.T.: 7.146 min
 Delta R.T.: 0.001 min
 Response: -278060
 Conc: N.D.

Instrument :
 ECD_D
 ClientSampleId :
 TP-5



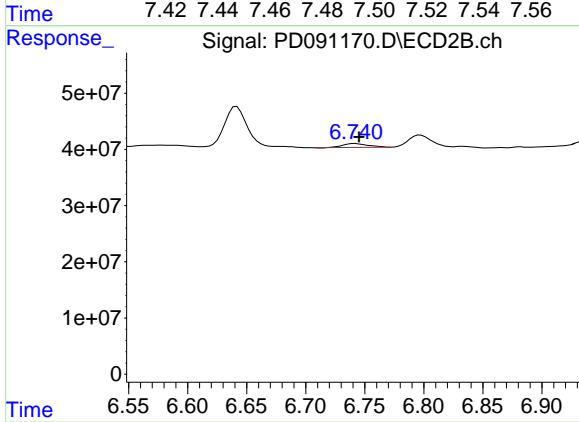
#19 Endosulfan Sulfate

R.T.: 6.459 min
 Delta R.T.: -0.015 min
 Response: 1797542
 Conc: 0.05 ng/ml



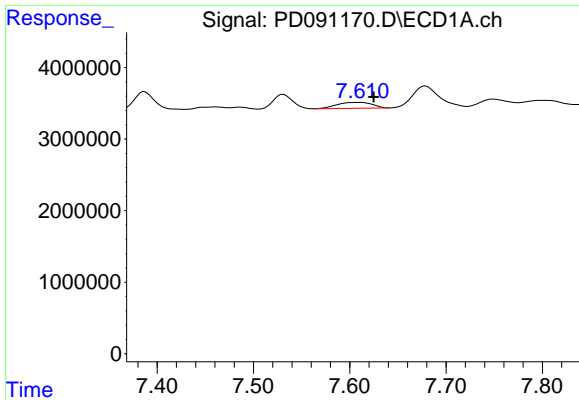
#20 Methoxychlor

R.T.: 7.487 min
 Delta R.T.: -0.002 min
 Response: 498966
 Conc: 0.23 ng/ml



#20 Methoxychlor

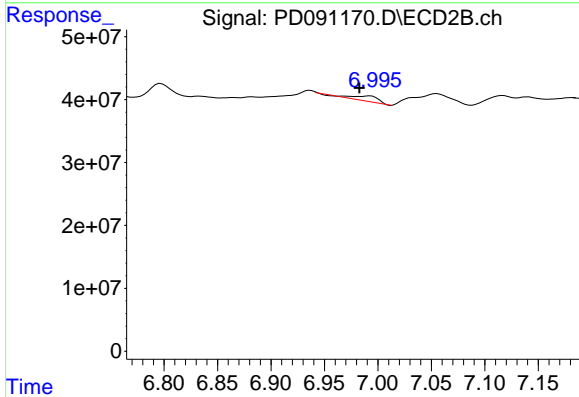
R.T.: 6.742 min
 Delta R.T.: -0.004 min
 Response: 10599552
 Conc: 0.61 ng/ml



#21 Endrin ketone

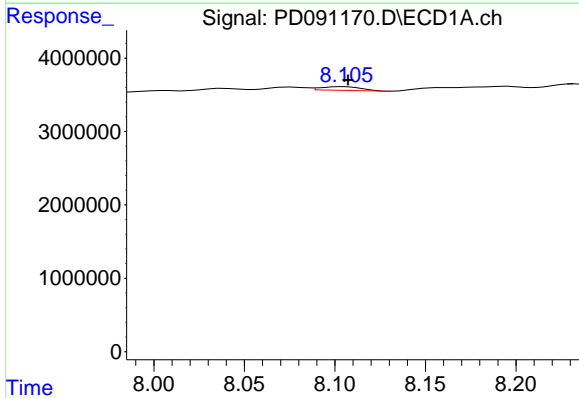
R.T.: 7.611 min
 Delta R.T.: -0.014 min
 Response: 2118858
 Conc: 0.44 ng/ml

Instrument :
 ECD_D
 ClientSampleId :
 TP-5



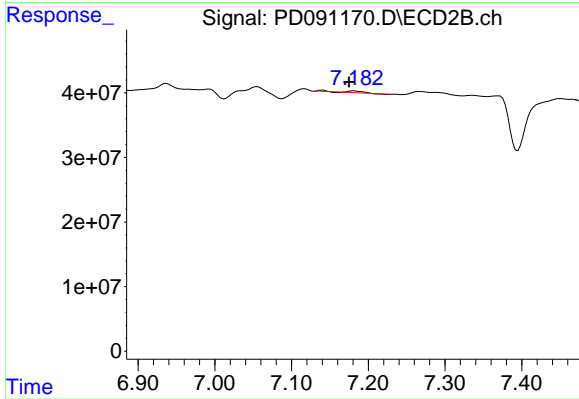
#21 Endrin ketone

R.T.: 6.992 min
 Delta R.T.: 0.009 min
 Response: 16325422
 Conc: 0.43 ng/ml



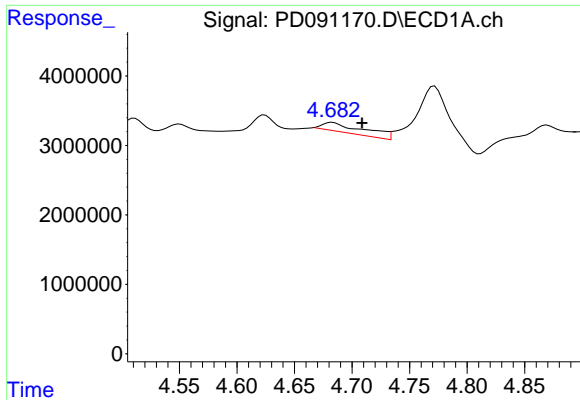
#22 Mirex

R.T.: 8.104 min
 Delta R.T.: -0.003 min
 Response: 773490
 Conc: 0.24 ng/ml



#22 Mirex

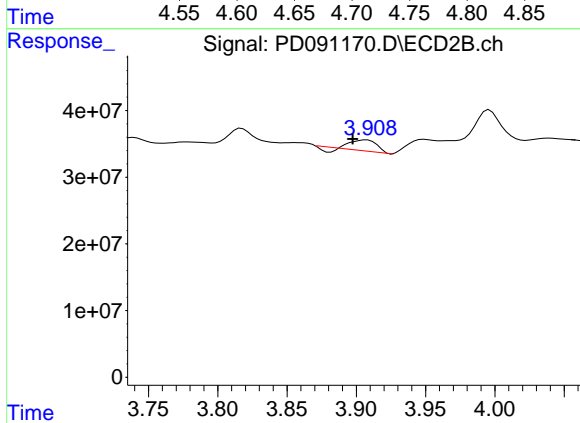
R.T.: 7.182 min
 Delta R.T.: 0.006 min
 Response: 2367040
 Conc: 0.09 ng/ml



#23 Chlordane-1

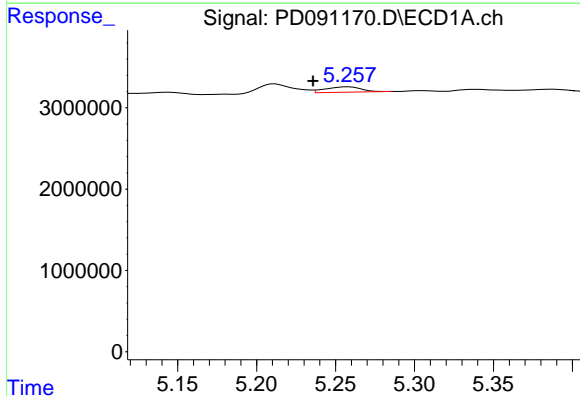
R.T.: 4.683 min
 Delta R.T.: -0.026 min
 Response: 3465241
 Conc: 18.34 ng/ml

Instrument :
 ECD_D
 ClientSampleId :
 TP-5



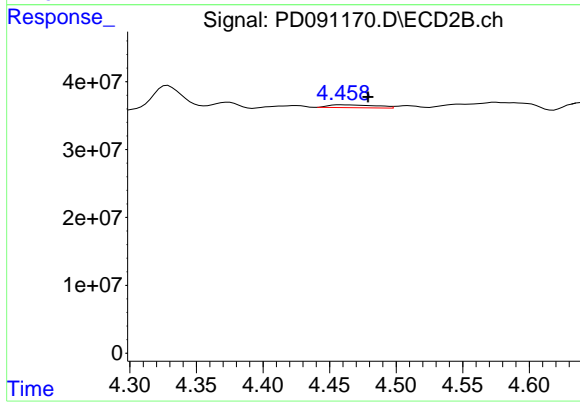
#23 Chlordane-1

R.T.: 3.908 min
 Delta R.T.: 0.010 min
 Response: 17788590
 Conc: 14.27 ng/ml



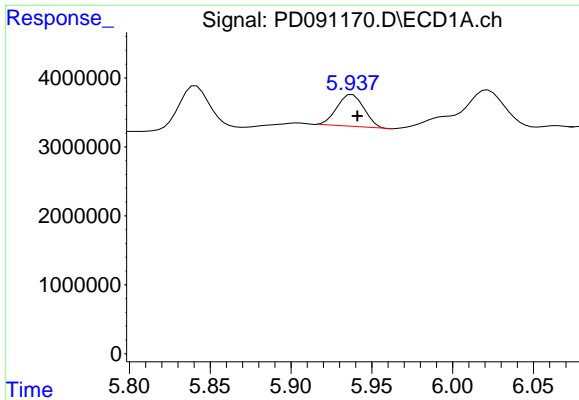
#24 Chlordane-2

R.T.: 5.258 min
 Delta R.T.: 0.023 min
 Response: 1067684
 Conc: 5.53 ng/ml



#24 Chlordane-2

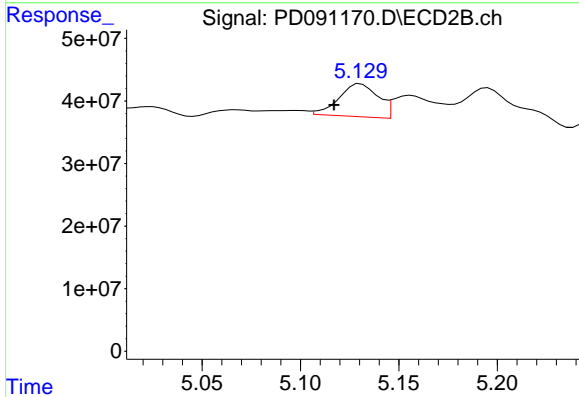
R.T.: 4.459 min
 Delta R.T.: -0.020 min
 Response: 10622096
 Conc: 8.14 ng/ml



#25 Chlordane-3

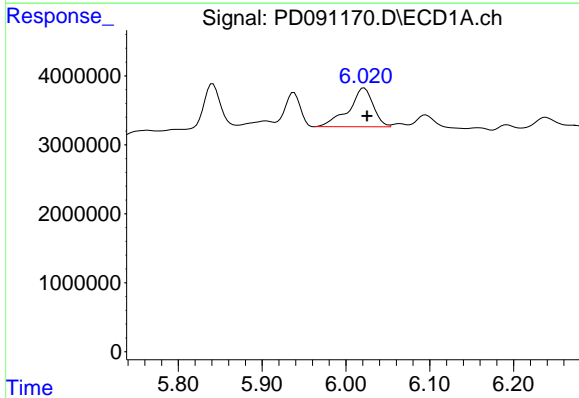
R.T.: 5.938 min
 Delta R.T.: -0.003 min
 Response: 5373427
 Conc: 7.04 ng/ml

Instrument :
 ECD_D
 ClientSampleId :
 TP-5



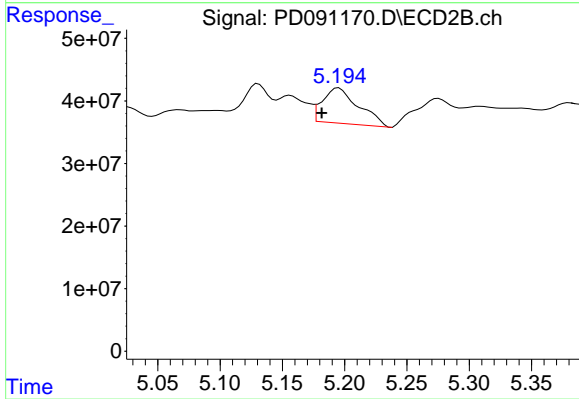
#25 Chlordane-3

R.T.: 5.131 min
 Delta R.T.: 0.013 min
 Response: 72962854
 Conc: 18.75 ng/ml



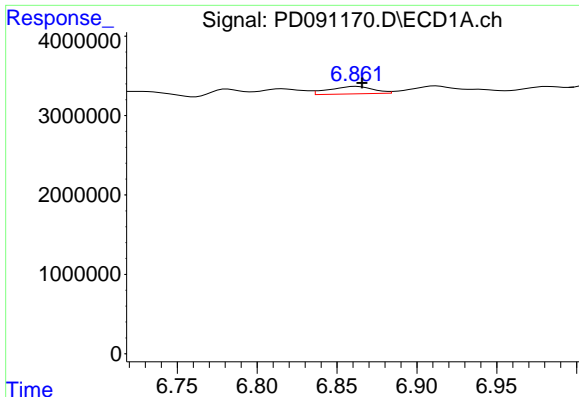
#26 Chlordane-4

R.T.: 6.022 min
 Delta R.T.: -0.003 min
 Response: 11476577
 Conc: 11.85 ng/ml



#26 Chlordane-4

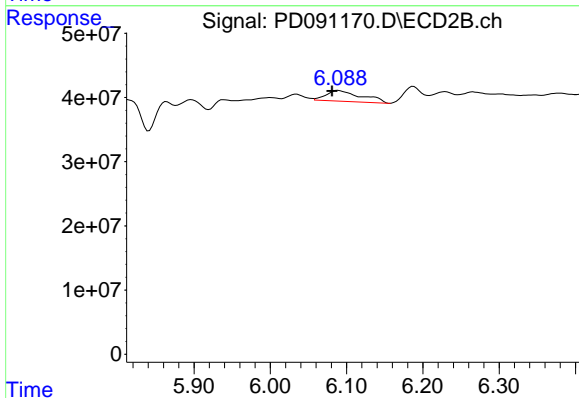
R.T.: 5.195 min
 Delta R.T.: 0.014 min
 Response: 113307920
 Conc: 33.91 ng/ml



#27 Chlordane-5

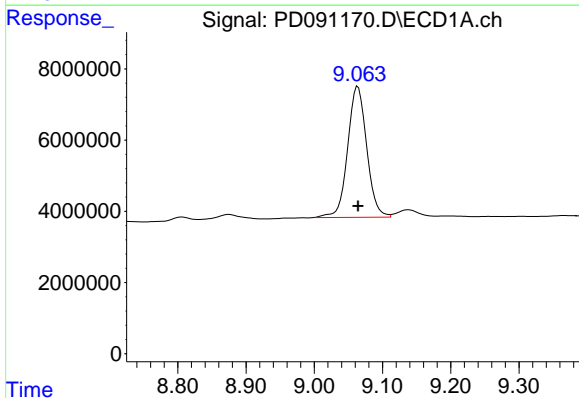
R.T.: 6.862 min
 Delta R.T.: -0.003 min
 Response: 1779623
 Conc: 11.84 ng/ml

Instrument :
 ECD_D
 ClientSampleId :
 TP-5



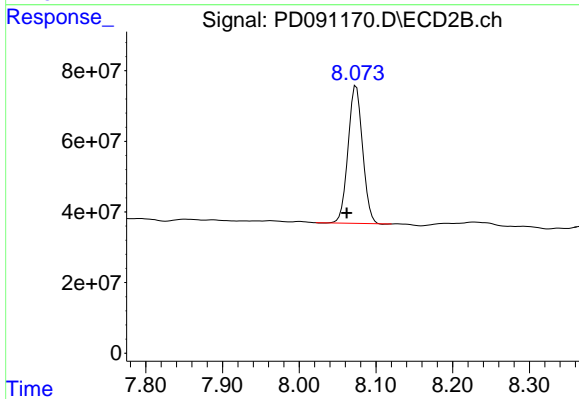
#27 Chlordane-5

R.T.: 6.089 min
 Delta R.T.: 0.008 min
 Response: 53954811
 Conc: 36.55 ng/ml



#28 Decachlorobiphenyl

R.T.: 9.064 min
 Delta R.T.: 0.000 min
 Response: 71304937
 Conc: 15.24 ng/ml



#28 Decachlorobiphenyl

R.T.: 8.074 min
 Delta R.T.: 0.013 min
 Response: 515516812
 Conc: 17.02 ng/ml