

Data Path : Z:\pestpcbsrv\HPCHEM1\ECD\_D\Data\PD111425\  
 Data File : PD091172.D  
 Signal(s) : Signal #1: ECD1A.ch Signal #2: ECD2B.ch  
 Acq On : 14 Nov 2025 13:25  
 Operator : AR\AJ  
 Sample : Q3628-01MSD  
 Misc :  
 ALS Vial : 11 Sample Multiplier: 1

Instrument :  
 ECD\_D  
 ClientSampleId :  
 TP-5MSD

Integration File signal 1: autoint1.e  
 Integration File signal 2: autoint2.e  
 Quant Time: Nov 15 01:08:29 2025  
 Quant Method : Z:\pestpcbsrv\HPCHEM1\ECD\_D\Method\PD101725.M  
 Quant Title : GC Extractables  
 QLast Update : Fri Oct 17 17:43:28 2025  
 Response via : Initial Calibration  
 Integrator: ChemStation

Volume Inj. : 1 µl  
 Signal #1 Phase : ZB-MR2 Signal #2 Phase: ZB-MR2  
 Signal #1 Info : 30M x 0.32mm x0.5 Signal #2 Info : 30M x 0.32mm x 0.25µm

	Compound	RT#1	RT#2	Resp#1	Resp#2	ng/ml	ng/ml
-----							
System Monitoring Compounds							
1)	SA Tetrachlo...	3.544	2.874	96537988	622.1E6	31.000	20.893 #
28)	SA Decachlor...	9.063	8.059	71846991	499.6E6	15.359	16.494
Target Compounds							
2)	A alpha-BHC	3.993	3.385	385.4E6	2909.0E6	53.694	56.932
3)	MA gamma-BHC...	4.324	3.721	351.5E6	2674.7E6	51.706	56.609
4)	MA Heptachlor	4.922	4.073	355.0E6	2627.8E6	63.518	58.917
5)	MB Aldrin	5.263	4.358	342.2E6	2579.3E6	52.263	55.686
6)	B beta-BHC	4.511	4.017	134.9E6	1129.5E6	51.492	56.960
7)	B delta-BHC	4.760	4.253	368.5E6	2684.6E6	54.499	56.262
8)	B Heptachlo...	5.683	4.862	301.6E6	2336.1E6	52.102	54.787
9)	A Endosulfan I	6.067	5.237	285.5E6	2092.1E6	51.571	53.112
10)	B gamma-Chl...	5.939	5.115	303.5E6	2549.6E6	51.167	56.723
11)	B alpha-Chl...	6.020	5.180	309.4E6	2412.3E6	50.069	55.921
12)	B 4,4'-DDE	6.189	5.364	266.2E6	2418.7E6	49.973	55.173
13)	MA Dieldrin	6.340	5.502	302.8E6	2489.9E6	51.921	56.353
14)	MA Endrin	6.567	5.779	251.8E6	2257.2E6	50.837	55.742
15)	B Endosulfa...	6.780	6.070	242.6E6	2096.1E6	48.516	55.815
16)	A 4,4'-DDD	6.699	5.918	219.1E6	1972.1E6	54.046	54.121
17)	MA 4,4'-DDT	7.015	6.172	215.9E6	1985.9E6	52.524	56.623
18)	B Endrin al...	6.909	6.248	182.2E6	1521.1E6	49.732	54.927
19)	B Endosulfa...	7.144	6.472	231.0E6	1954.5E6	49.803	54.526
20)	A Methoxychlor	7.488	6.742	110.8E6	941.2E6	52.104	54.003
21)	B Endrin ke...	7.625	6.981	252.3E6	2077.8E6	51.928	55.087
22)	Mirex	8.106	7.173	147.7E6	1339.5E6	46.149	52.140
23)	Chlordane-1	4.683f	3.890	2910170	25095178	15.400	20.136 #
24)	Chlordane-2	5.212f	4.496	1418200	12662065	7.343	9.706 #
25)	Chlordane-3	5.939	5.115	303.5E6	2549.6E6	397.871	655.165 #
26)	Chlordane-4	6.020	5.180	309.4E6	2412.3E6	319.379	721.981 #
27)	Chlordane-5	6.862	6.070	569893	2096.1E6	3.793	1420.120 #

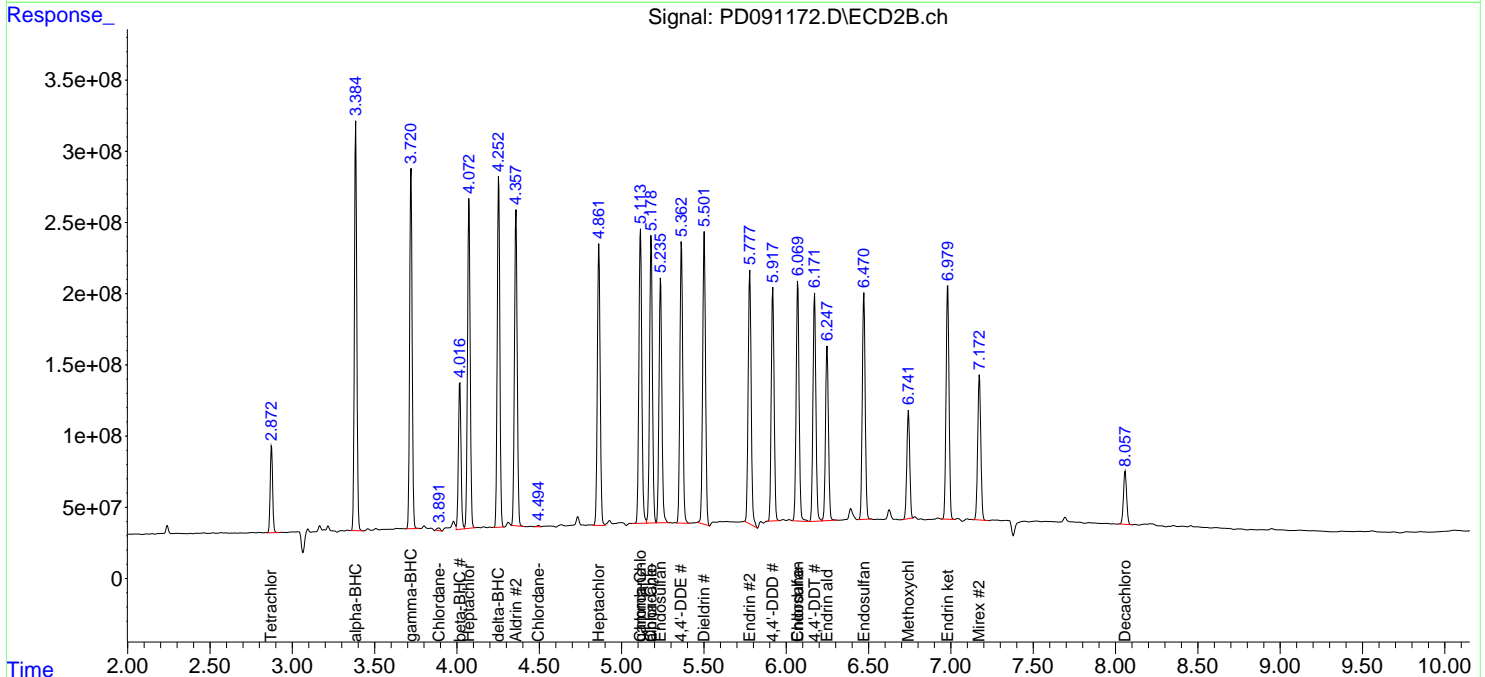
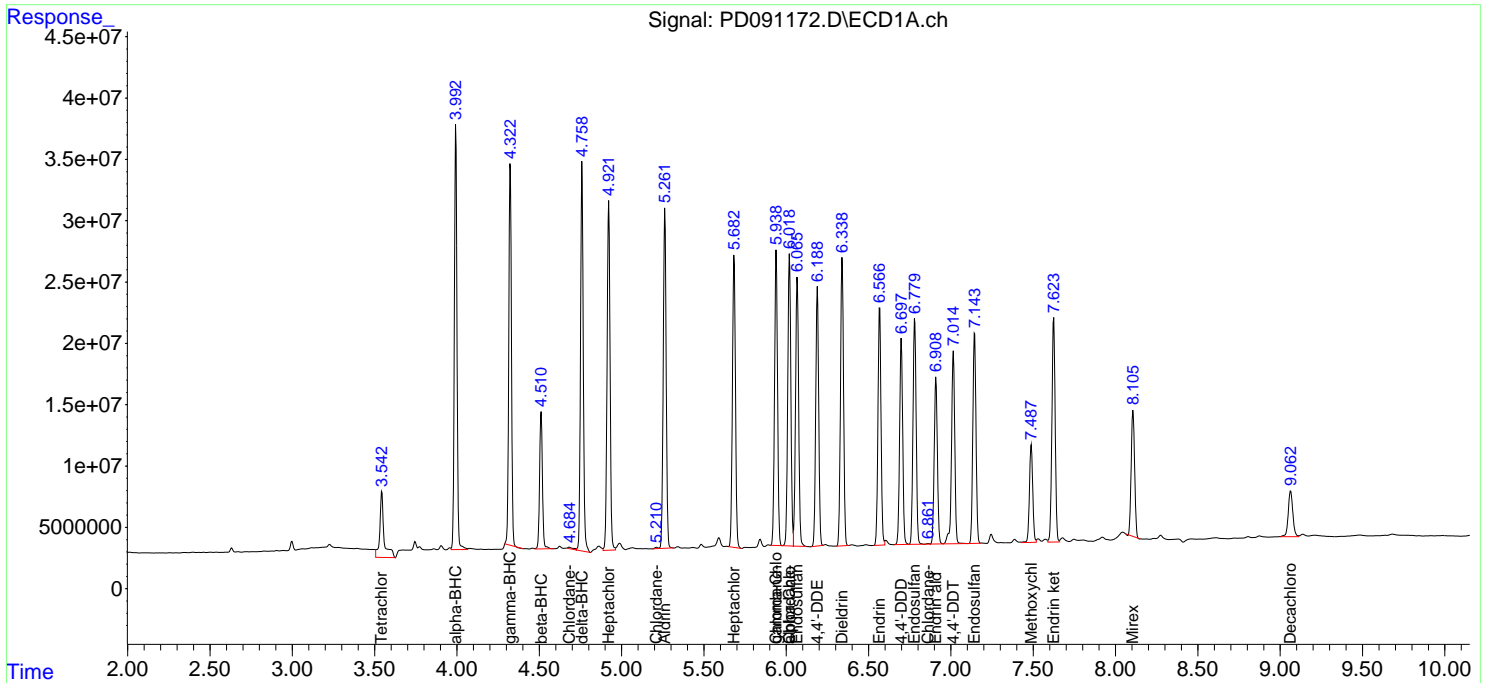
(f)=RT Delta > 1/2 Window (#)=Amounts differ by > 25% (m)=manual int.

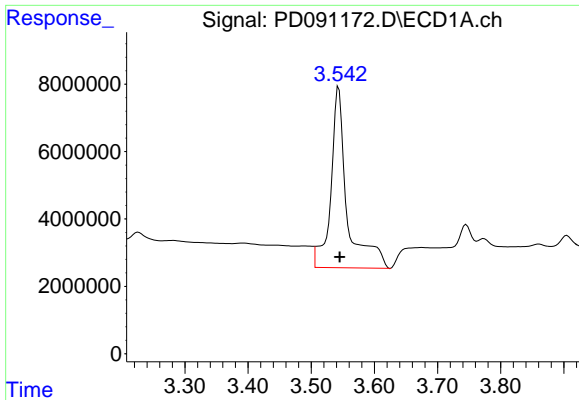
Data Path : Z:\pestpcbsrv\HPCHEM1\ECD\_D\Data\PD111425\  
 Data File : PD091172.D  
 Signal(s) : Signal #1: ECD1A.ch Signal #2: ECD2B.ch  
 Acq On : 14 Nov 2025 13:25  
 Operator : AR\AJ  
 Sample : Q3628-01MSD  
 Misc :  
 ALS Vial : 11 Sample Multiplier: 1

Instrument :  
 ECD\_D  
 ClientSampleId :  
 TP-5MSD

Integration File signal 1: autoint1.e  
 Integration File signal 2: autoint2.e  
 Quant Time: Nov 15 01:08:29 2025  
 Quant Method : Z:\pestpcbsrv\HPCHEM1\ECD\_D\Method\PD101725.M  
 Quant Title : GC Extractables  
 QLast Update : Fri Oct 17 17:43:28 2025  
 Response via : Initial Calibration  
 Integrator: ChemStation

Volume Inj. : 1 µl  
 Signal #1 Phase : ZB-MR1 Signal #2 Phase: ZB-MR2  
 Signal #1 Info : 30M x 0.32mm x0.5 Signal #2 Info : 30M x 0.32mm x 0.25µm

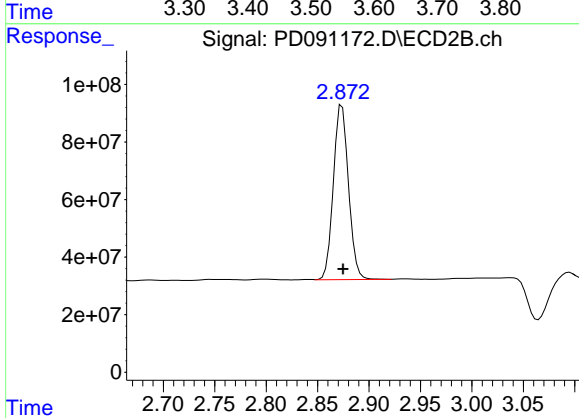




#1 Tetrachloro-m-xylene

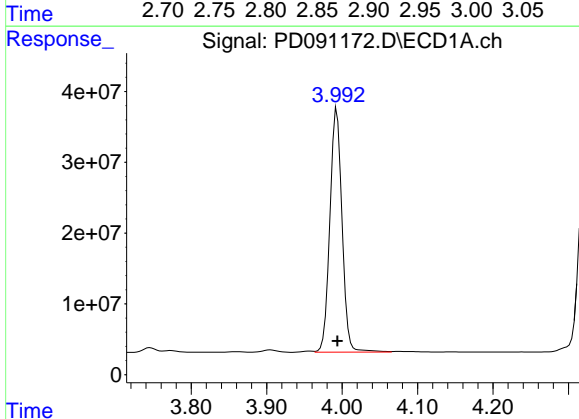
R.T.: 3.544 min  
Delta R.T.: -0.001 min  
Response: 96537988  
Conc: 31.00 ng/ml

Instrument :  
ECD\_D  
ClientSampleId :  
TP-5MSD



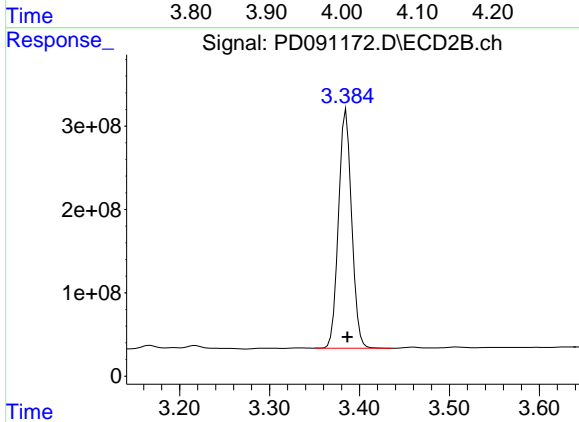
#1 Tetrachloro-m-xylene

R.T.: 2.874 min  
Delta R.T.: 0.000 min  
Response: 622129779  
Conc: 20.89 ng/ml



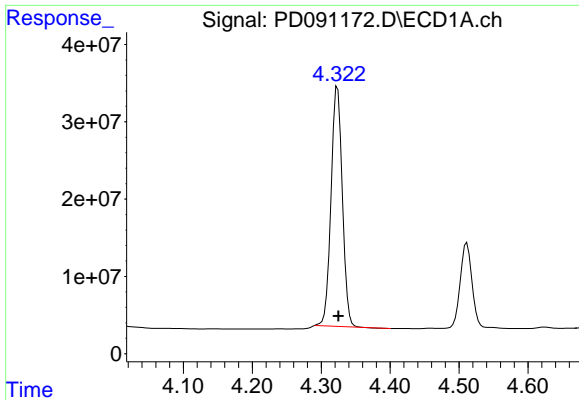
#2 alpha-BHC

R.T.: 3.993 min  
Delta R.T.: 0.000 min  
Response: 385370678  
Conc: 53.69 ng/ml



#2 alpha-BHC

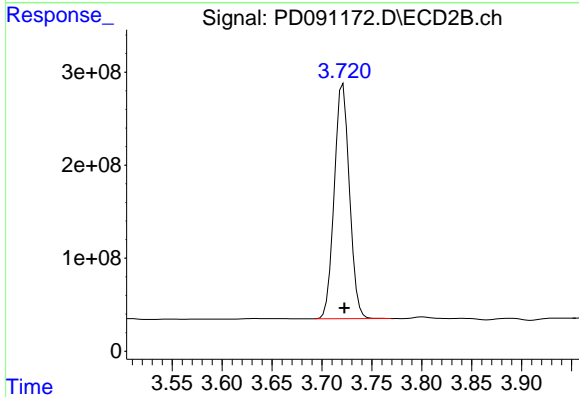
R.T.: 3.385 min  
Delta R.T.: -0.001 min  
Response: 2908963336  
Conc: 56.93 ng/ml



#3 gamma-BHC (Lindane)

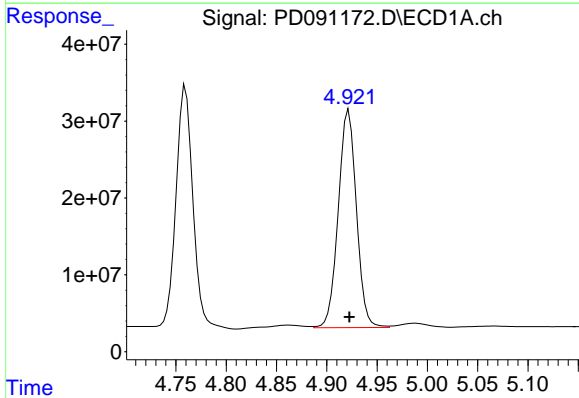
R.T.: 4.324 min  
 Delta R.T.: -0.001 min  
 Response: 351537375  
 Conc: 51.71 ng/ml

Instrument :  
 ECD\_D  
 ClientSampleId :  
 TP-5MSD



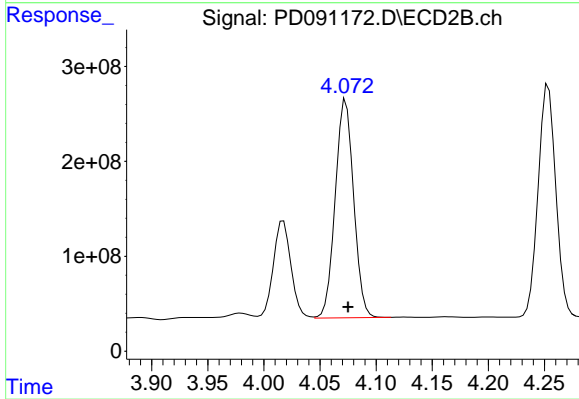
#3 gamma-BHC (Lindane)

R.T.: 3.721 min  
 Delta R.T.: -0.001 min  
 Response: 2674721351  
 Conc: 56.61 ng/ml



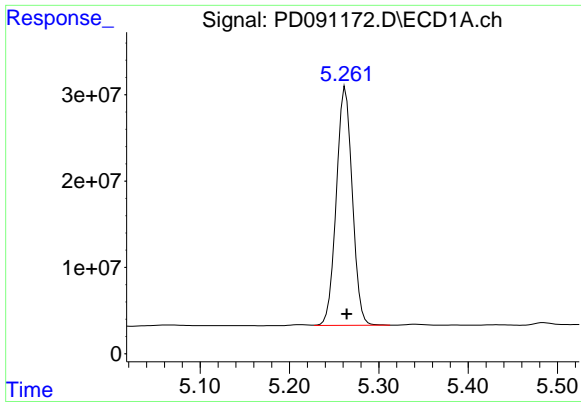
#4 Heptachlor

R.T.: 4.922 min  
 Delta R.T.: 0.000 min  
 Response: 355035080  
 Conc: 63.52 ng/ml



#4 Heptachlor

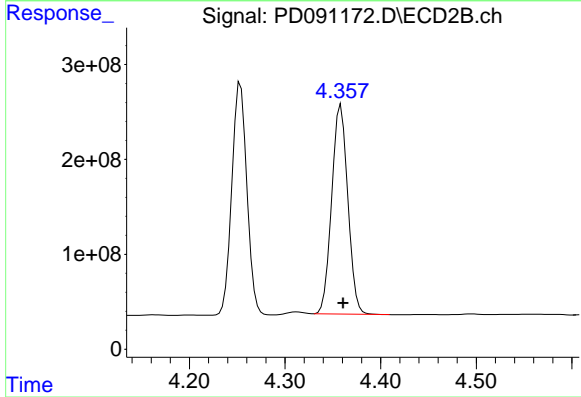
R.T.: 4.073 min  
 Delta R.T.: -0.002 min  
 Response: 2627848820  
 Conc: 58.92 ng/ml



#5 Aldrin

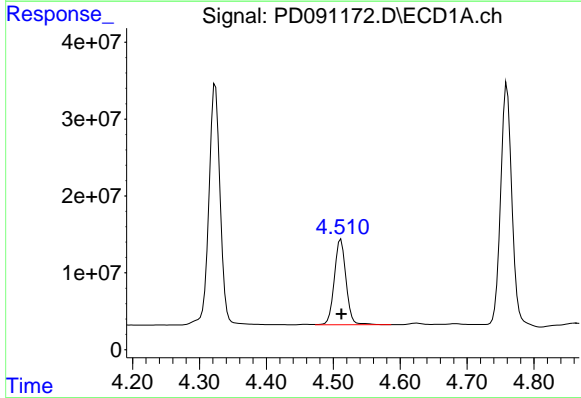
R.T.: 5.263 min  
 Delta R.T.: -0.002 min  
 Response: 342181218  
 Conc: 52.26 ng/ml

Instrument :  
 ECD\_D  
 ClientSampleId :  
 TP-5MSD



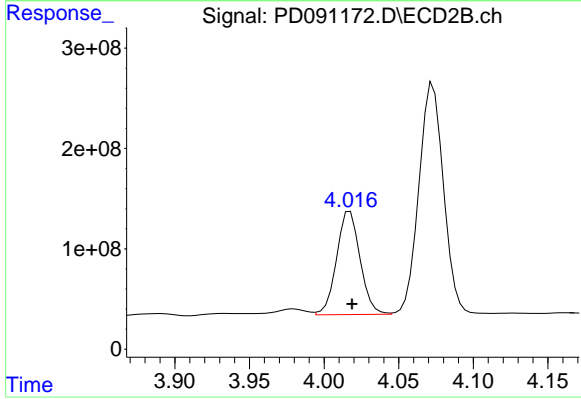
#5 Aldrin

R.T.: 4.358 min  
 Delta R.T.: -0.002 min  
 Response: 2579290483  
 Conc: 55.69 ng/ml



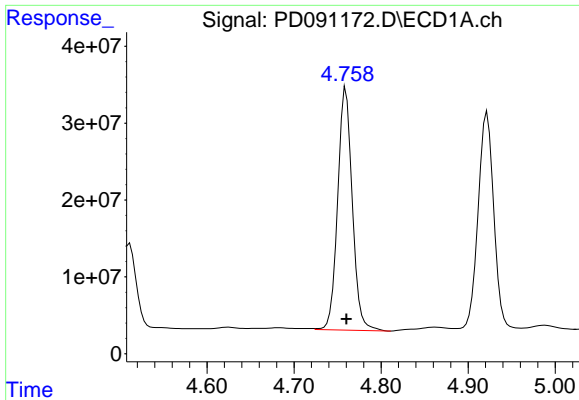
#6 beta-BHC

R.T.: 4.511 min  
 Delta R.T.: 0.000 min  
 Response: 134890270  
 Conc: 51.49 ng/ml



#6 beta-BHC

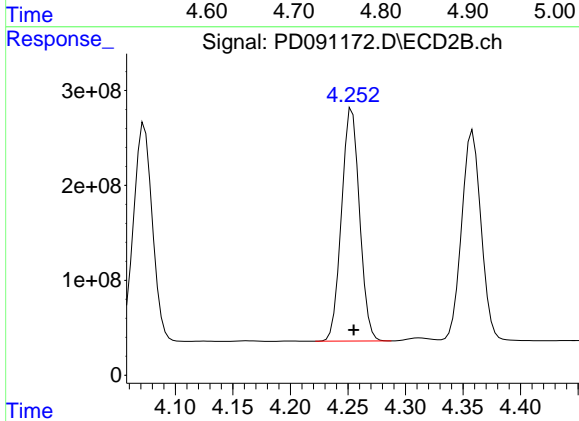
R.T.: 4.017 min  
 Delta R.T.: -0.001 min  
 Response: 1129484935  
 Conc: 56.96 ng/ml



#7 delta-BHC

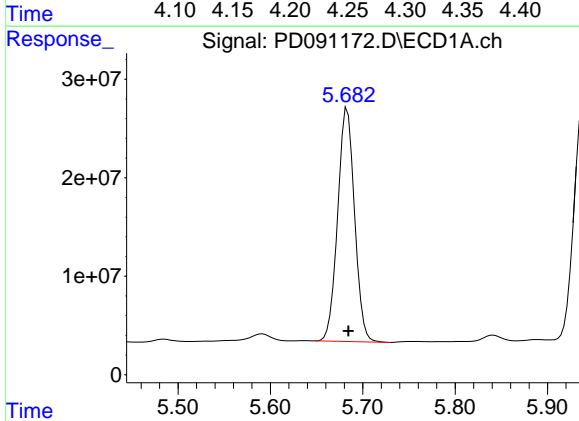
R.T.: 4.760 min  
 Delta R.T.: 0.000 min  
 Response: 368505650  
 Conc: 54.50 ng/ml

Instrument :  
 ECD\_D  
 ClientSampleId :  
 TP-5MSD



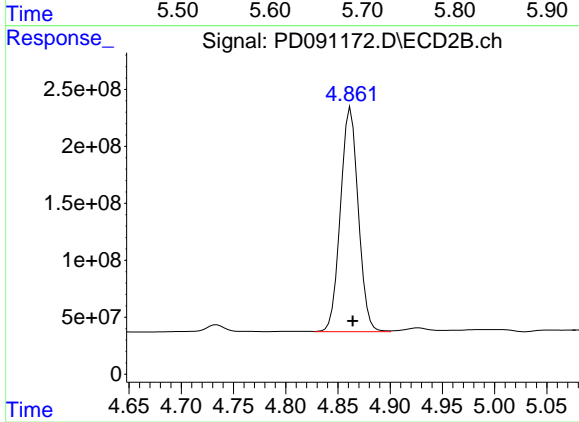
#7 delta-BHC

R.T.: 4.253 min  
 Delta R.T.: -0.002 min  
 Response: 2684617501  
 Conc: 56.26 ng/ml



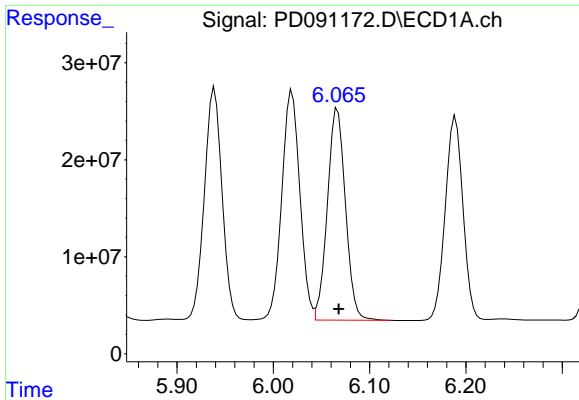
#8 Heptachlor epoxide

R.T.: 5.683 min  
 Delta R.T.: -0.001 min  
 Response: 301620317  
 Conc: 52.10 ng/ml



#8 Heptachlor epoxide

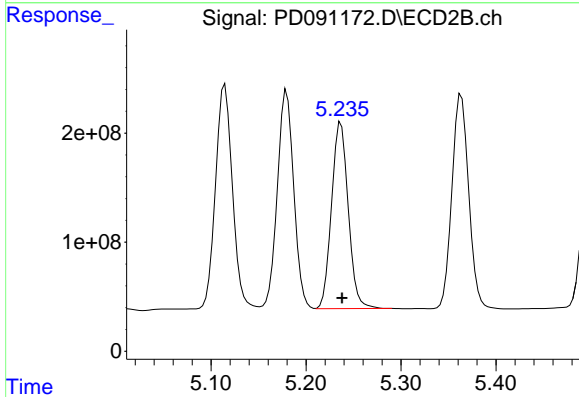
R.T.: 4.862 min  
 Delta R.T.: -0.002 min  
 Response: 2336061423  
 Conc: 54.79 ng/ml



#9 Endosulfan I

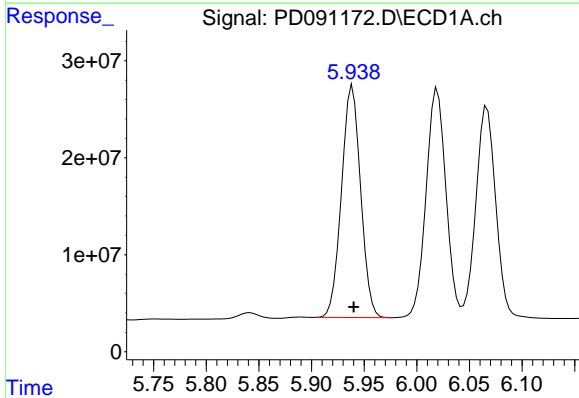
R.T.: 6.067 min  
 Delta R.T.: -0.001 min  
 Response: 285528819  
 Conc: 51.57 ng/ml

Instrument :  
 ECD\_D  
 ClientSampleId :  
 TP-5MSD



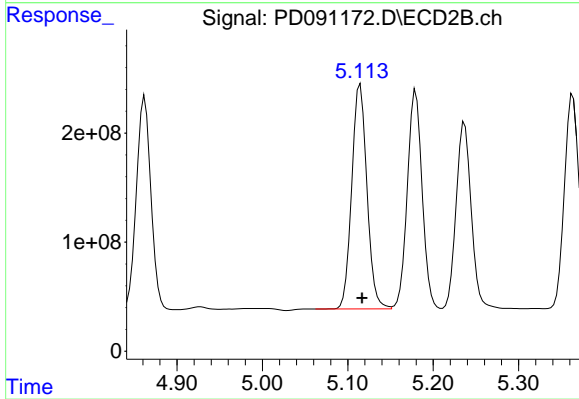
#9 Endosulfan I

R.T.: 5.237 min  
 Delta R.T.: -0.001 min  
 Response: 2092105102  
 Conc: 53.11 ng/ml



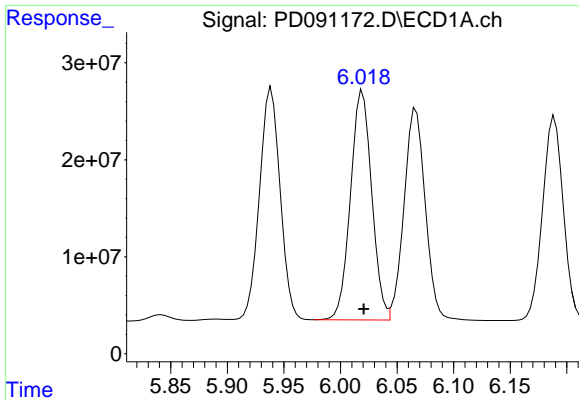
#10 gamma-Chlordane

R.T.: 5.939 min  
 Delta R.T.: -0.001 min  
 Response: 303480857  
 Conc: 51.17 ng/ml



#10 gamma-Chlordane

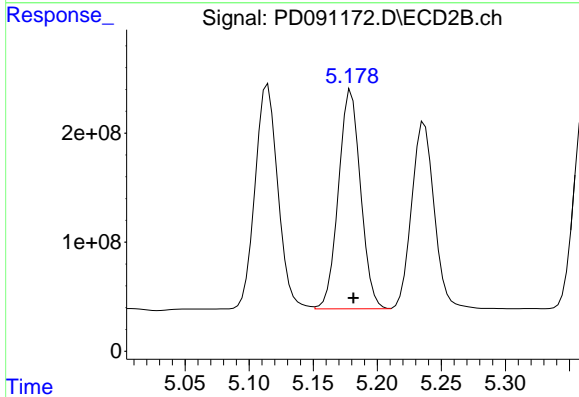
R.T.: 5.115 min  
 Delta R.T.: -0.002 min  
 Response: 2549621180  
 Conc: 56.72 ng/ml



#11 alpha-Chlordane

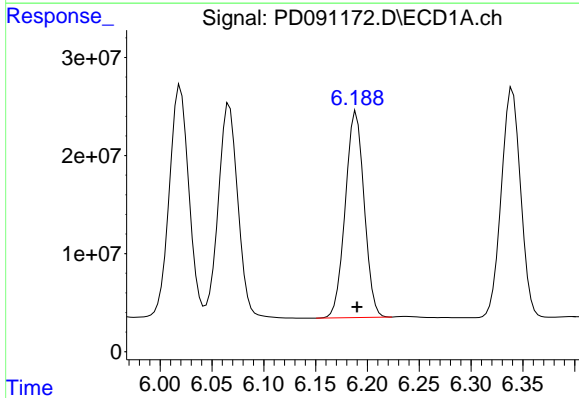
R.T.: 6.020 min  
 Delta R.T.: 0.000 min  
 Response: 309441590  
 Conc: 50.07 ng/ml

Instrument :  
 ECD\_D  
 ClientSampleId :  
 TP-5MSD



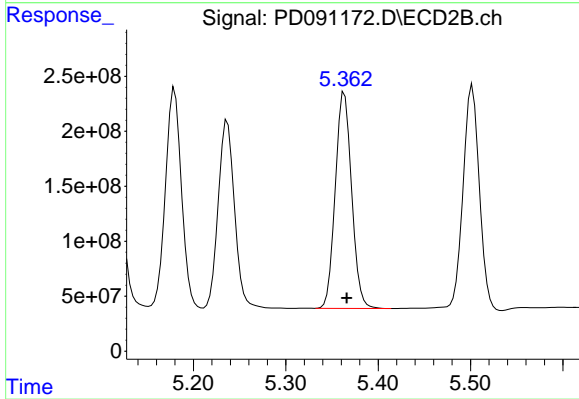
#11 alpha-Chlordane

R.T.: 5.180 min  
 Delta R.T.: -0.002 min  
 Response: 2412309069  
 Conc: 55.92 ng/ml



#12 4,4'-DDE

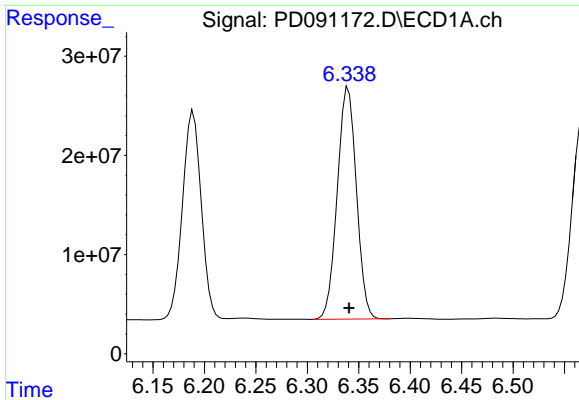
R.T.: 6.189 min  
 Delta R.T.: 0.000 min  
 Response: 266190509  
 Conc: 49.97 ng/ml



#12 4,4'-DDE

R.T.: 5.364 min  
 Delta R.T.: -0.002 min  
 Response: 2418693613  
 Conc: 55.17 ng/ml

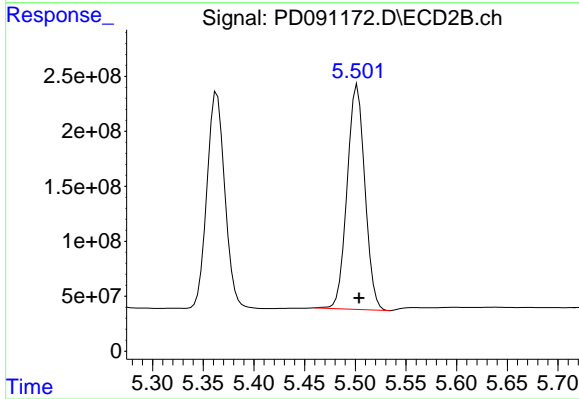




#13 Dieldrin

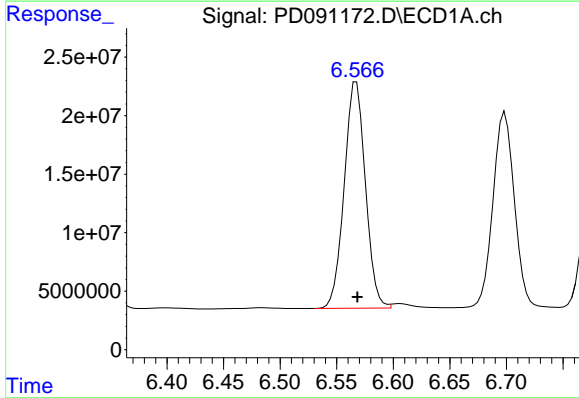
R.T.: 6.340 min  
 Delta R.T.: 0.000 min  
 Response: 302768710  
 Conc: 51.92 ng/ml

Instrument :  
 ECD\_D  
 ClientSampleId :  
 TP-5MSD



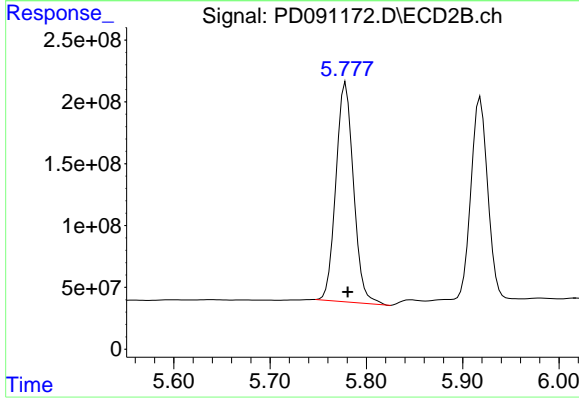
#13 Dieldrin

R.T.: 5.502 min  
 Delta R.T.: -0.002 min  
 Response: 2489907248  
 Conc: 56.35 ng/ml



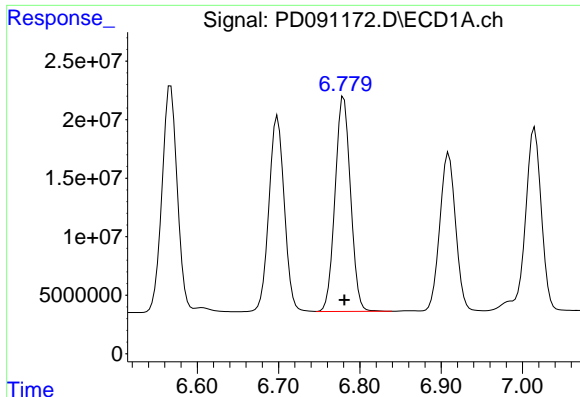
#14 Endrin

R.T.: 6.567 min  
 Delta R.T.: 0.000 min  
 Response: 251832305  
 Conc: 50.84 ng/ml



#14 Endrin

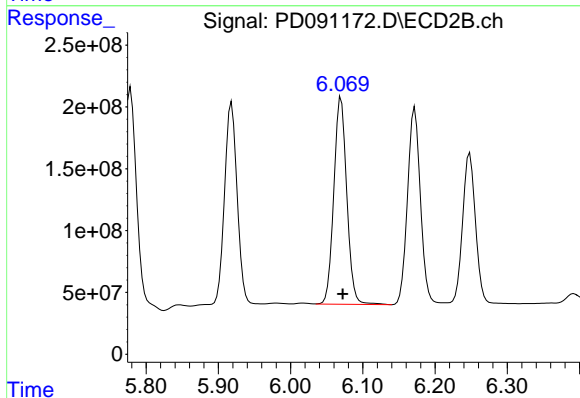
R.T.: 5.779 min  
 Delta R.T.: -0.002 min  
 Response: 2257218539  
 Conc: 55.74 ng/ml



#15 Endosulfan II

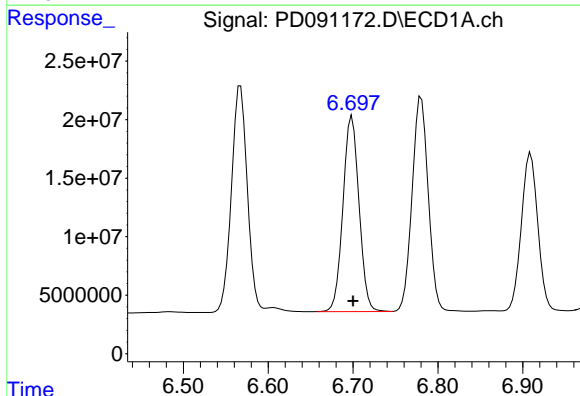
R.T.: 6.780 min  
Delta R.T.: 0.000 min  
Response: 242580431  
Conc: 48.52 ng/ml

Instrument :  
ECD\_D  
ClientSampleId :  
TP-5MSD



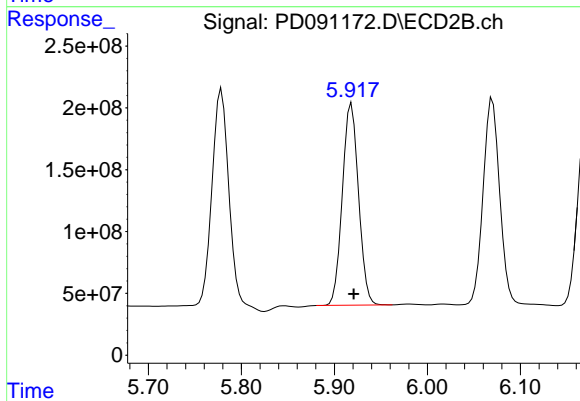
#15 Endosulfan II

R.T.: 6.070 min  
Delta R.T.: -0.002 min  
Response: 2096144339  
Conc: 55.81 ng/ml



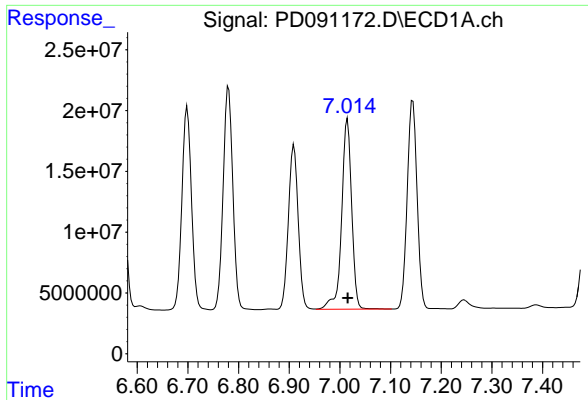
#16 4,4'-DDD

R.T.: 6.699 min  
Delta R.T.: -0.001 min  
Response: 219115322  
Conc: 54.05 ng/ml



#16 4,4'-DDD

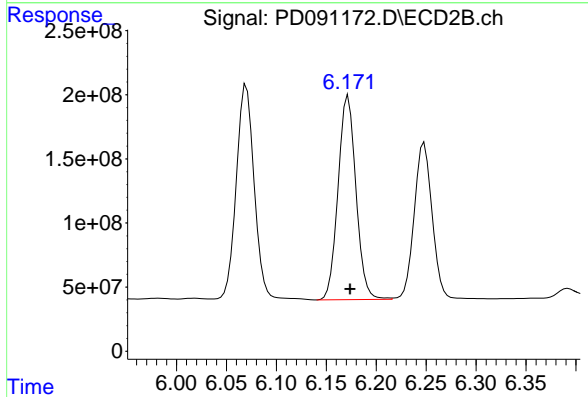
R.T.: 5.918 min  
Delta R.T.: -0.002 min  
Response: 1972069306  
Conc: 54.12 ng/ml



#17 4,4'-DDT

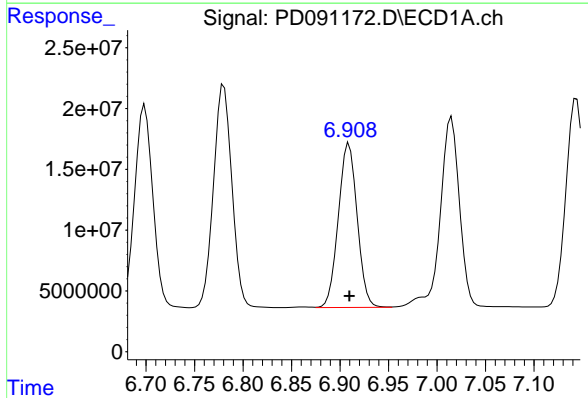
R.T.: 7.015 min  
 Delta R.T.: 0.000 min  
 Response: 215897600  
 Conc: 52.52 ng/ml

Instrument :  
 ECD\_D  
 ClientSampleId :  
 TP-5MSD



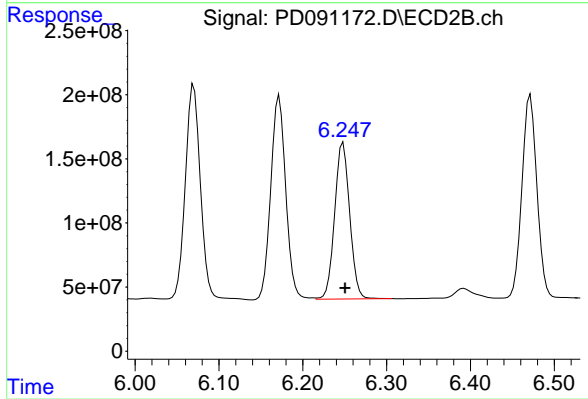
#17 4,4'-DDT

R.T.: 6.172 min  
 Delta R.T.: -0.002 min  
 Response: 1985948081  
 Conc: 56.62 ng/ml



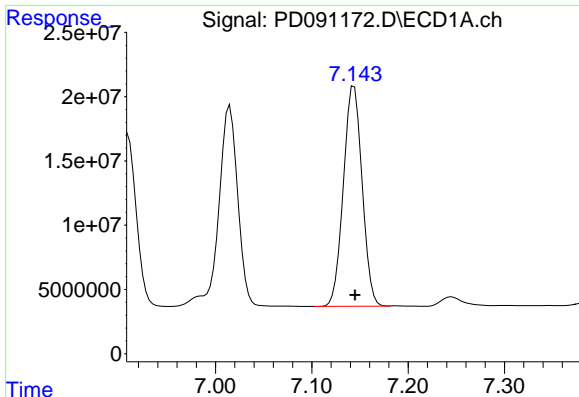
#18 Endrin aldehyde

R.T.: 6.909 min  
 Delta R.T.: 0.000 min  
 Response: 182153406  
 Conc: 49.73 ng/ml



#18 Endrin aldehyde

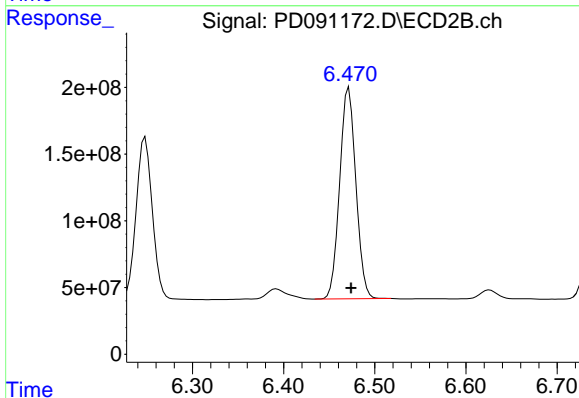
R.T.: 6.248 min  
 Delta R.T.: -0.002 min  
 Response: 1521078772  
 Conc: 54.93 ng/ml



#19 Endosulfan Sulfate

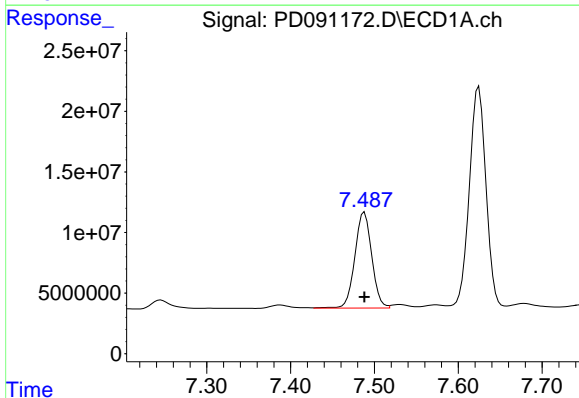
R.T.: 7.144 min  
 Delta R.T.: 0.000 min  
 Response: 230995587  
 Conc: 49.80 ng/ml

Instrument :  
 ECD\_D  
 ClientSampleId :  
 TP-5MSD



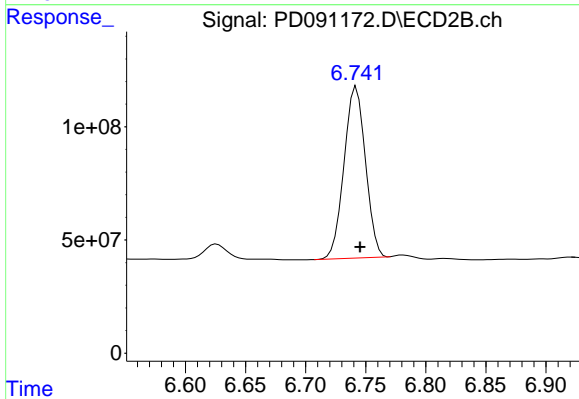
#19 Endosulfan Sulfate

R.T.: 6.472 min  
 Delta R.T.: -0.002 min  
 Response: 1954485944  
 Conc: 54.53 ng/ml



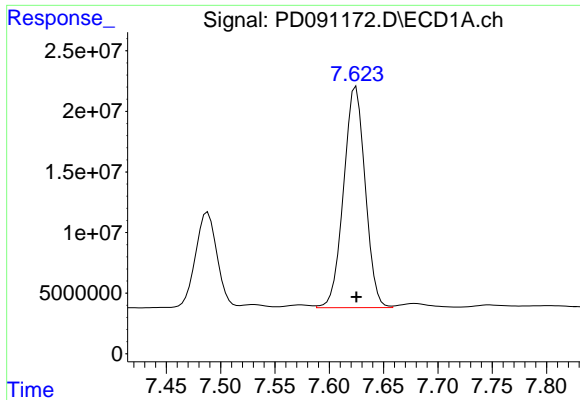
#20 Methoxychlor

R.T.: 7.488 min  
 Delta R.T.: 0.000 min  
 Response: 110752352  
 Conc: 52.10 ng/ml



#20 Methoxychlor

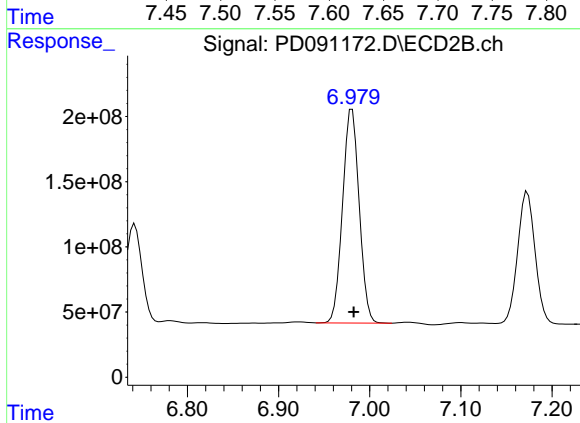
R.T.: 6.742 min  
 Delta R.T.: -0.003 min  
 Response: 941160072  
 Conc: 54.00 ng/ml



#21 Endrin ketone

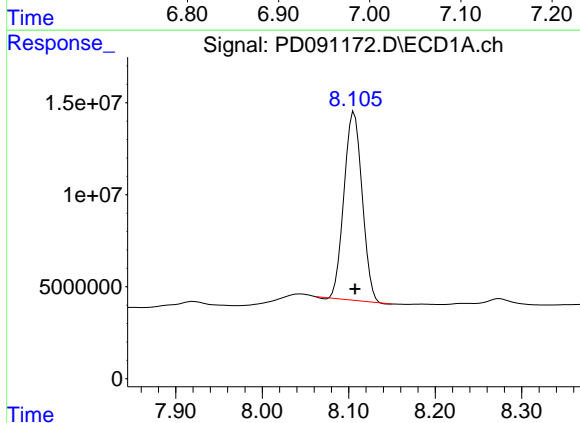
R.T.: 7.625 min  
 Delta R.T.: 0.000 min  
 Response: 252308409  
 Conc: 51.93 ng/ml

Instrument :  
 ECD\_D  
 ClientSampleId :  
 TP-5MSD



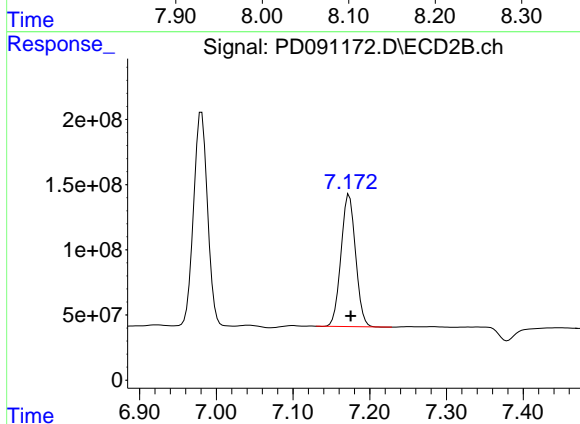
#21 Endrin ketone

R.T.: 6.981 min  
 Delta R.T.: -0.002 min  
 Response: 2077764956  
 Conc: 55.09 ng/ml



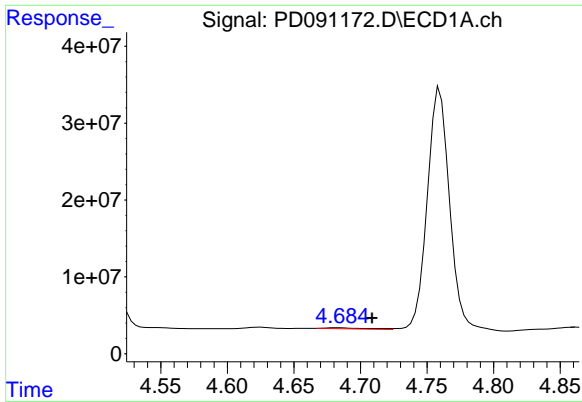
#22 Mirex

R.T.: 8.106 min  
 Delta R.T.: -0.001 min  
 Response: 147716949  
 Conc: 46.15 ng/ml



#22 Mirex

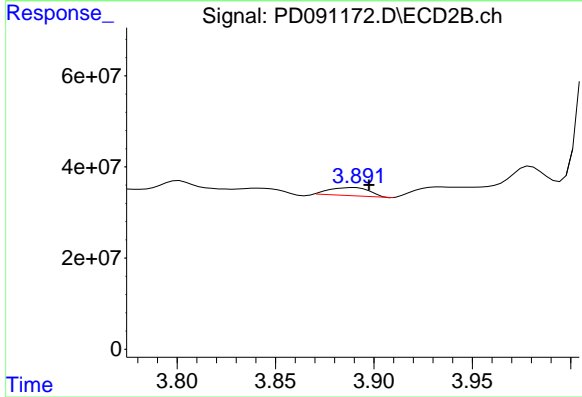
R.T.: 7.173 min  
 Delta R.T.: -0.002 min  
 Response: 1339529144  
 Conc: 52.14 ng/ml



#23 Chlordane-1

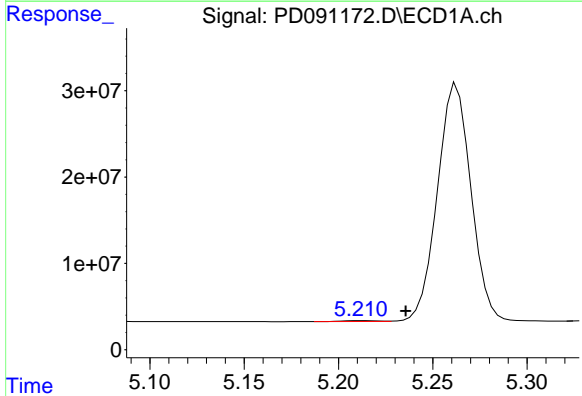
R.T.: 4.683 min  
 Delta R.T.: -0.026 min  
 Response: 2910170  
 Conc: 15.40 ng/ml

Instrument :  
 ECD\_D  
 ClientSampleId :  
 TP-5MSD



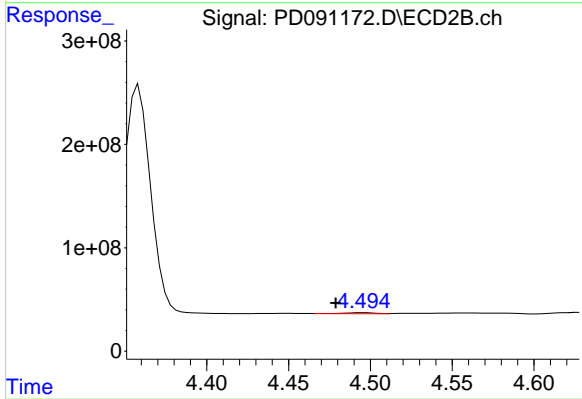
#23 Chlordane-1

R.T.: 3.890 min  
 Delta R.T.: -0.007 min  
 Response: 25095178  
 Conc: 20.14 ng/ml



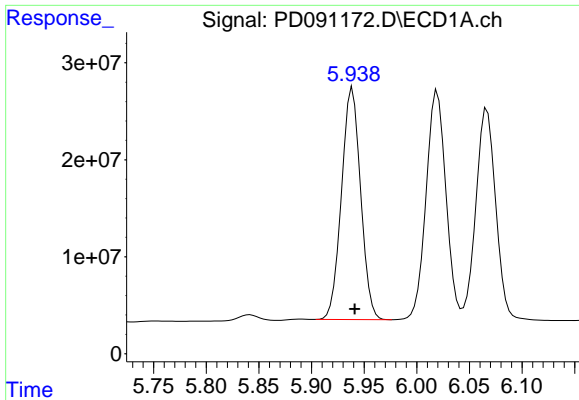
#24 Chlordane-2

R.T.: 5.212 min  
 Delta R.T.: -0.024 min  
 Response: 1418200  
 Conc: 7.34 ng/ml



#24 Chlordane-2

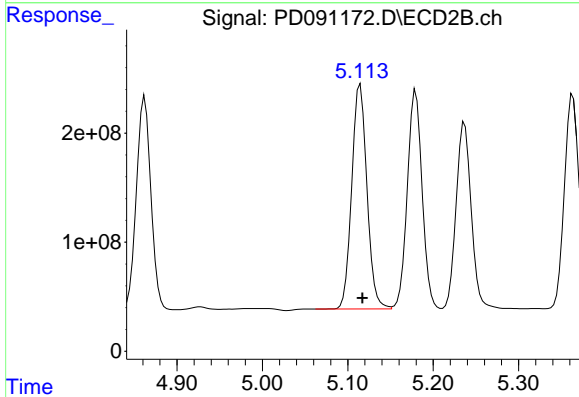
R.T.: 4.496 min  
 Delta R.T.: 0.017 min  
 Response: 12662065  
 Conc: 9.71 ng/ml



#25 Chlordane-3

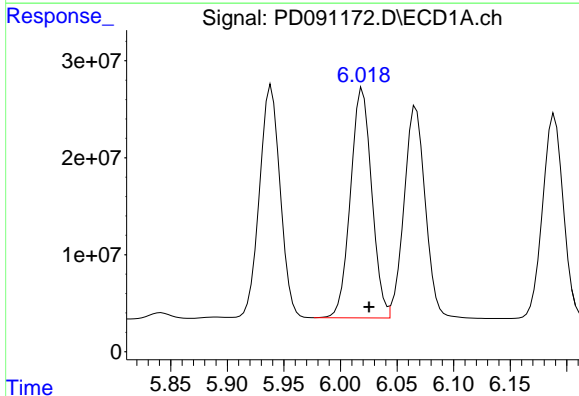
R.T.: 5.939 min  
 Delta R.T.: -0.002 min  
 Response: 303480857  
 Conc: 397.87 ng/ml

Instrument :  
 ECD\_D  
 ClientSampleId :  
 TP-5MSD



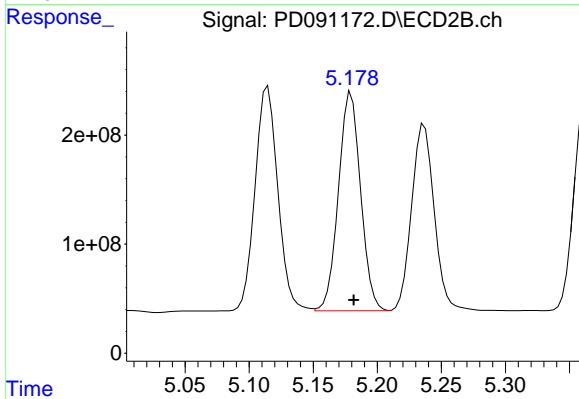
#25 Chlordane-3

R.T.: 5.115 min  
 Delta R.T.: -0.002 min  
 Response: 2549621180  
 Conc: 655.17 ng/ml



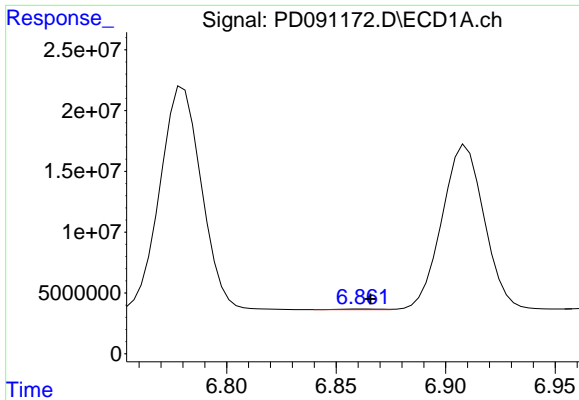
#26 Chlordane-4

R.T.: 6.020 min  
 Delta R.T.: -0.006 min  
 Response: 309441590  
 Conc: 319.38 ng/ml



#26 Chlordane-4

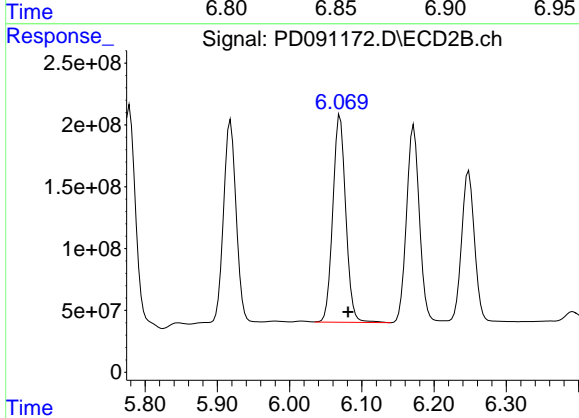
R.T.: 5.180 min  
 Delta R.T.: -0.002 min  
 Response: 2412309069  
 Conc: 721.98 ng/ml



#27 Chlordane-5

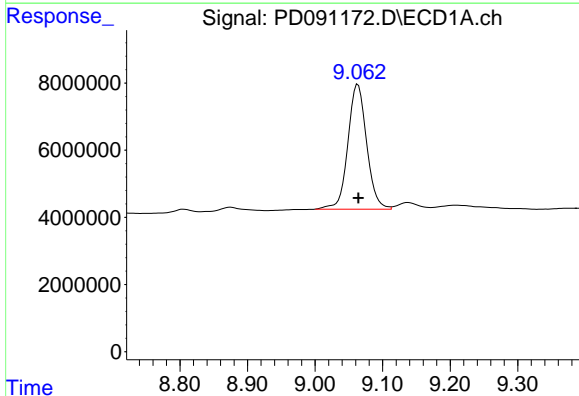
R.T.: 6.862 min  
 Delta R.T.: -0.003 min  
 Response: 569893  
 Conc: 3.79 ng/ml

Instrument :  
 ECD\_D  
 ClientSampleId :  
 TP-5MSD



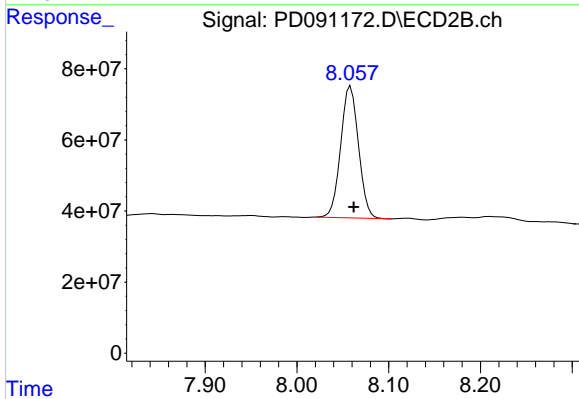
#27 Chlordane-5

R.T.: 6.070 min  
 Delta R.T.: -0.011 min  
 Response: 2096144339  
 Conc: 1420.12 ng/ml



#28 Decachlorobiphenyl

R.T.: 9.063 min  
 Delta R.T.: 0.000 min  
 Response: 71846991  
 Conc: 15.36 ng/ml



#28 Decachlorobiphenyl

R.T.: 8.059 min  
 Delta R.T.: -0.003 min  
 Response: 499616100  
 Conc: 16.49 ng/ml