

Data Path : Z:\pestpcbsrv\HPCHEM1\ECD\_D\Data\PD111425\  
 Data File : PD091177.D  
 Signal(s) : Signal #1: ECD1A.ch Signal #2: ECD2B.ch  
 Acq On : 14 Nov 2025 14:33  
 Operator : AR\AJ  
 Sample : Q3633-05  
 Misc :  
 ALS Vial : 16 Sample Multiplier: 1

Instrument :  
 ECD\_D  
 ClientSampleId :  
 ETGI-368

Integration File signal 1: autoint1.e  
 Integration File signal 2: autoint2.e  
 Quant Time: Nov 15 01:09:15 2025  
 Quant Method : Z:\pestpcbsrv\HPCHEM1\ECD\_D\Method\PD101725.M  
 Quant Title : GC Extractables  
 QLast Update : Fri Oct 17 17:43:28 2025  
 Response via : Initial Calibration  
 Integrator: ChemStation

Volume Inj. : 1 µl  
 Signal #1 Phase : ZB-MR2 Signal #2 Phase: ZB-MR2  
 Signal #1 Info : 30M x 0.32mm x0.5 Signal #2 Info : 30M x 0.32mm x 0.25µm

	Compound	RT#1	RT#2	Resp#1	Resp#2	ng/ml	ng/ml
-----							
System Monitoring Compounds							
1)	SA Tetrachlo...	3.543	2.874	97607295	585.1E6	31.343	19.651 #
28)	SA Decachlor...	9.064	8.058	86107923	437.8E6	18.407	14.453
Target Compounds							
2)	A alpha-BHC	0.000	3.379	0	1406170	N.D.	0.028 #
3)	MA gamma-BHC...	0.000	3.725	0	31881830	N.D.	0.675 #
4)	MA Heptachlor	4.939f	4.086	4813060	12129006	0.861	0.272 #
5)	MB Aldrin	5.249f	4.355	2971875	24124097	0.454	0.521
6)	B beta-BHC	4.480f	4.029	3892472	88853385	1.486	4.481 #
7)	B delta-BHC	4.772	4.248	14827177	9007764	2.193	0.189 #
8)	Heptachlo...	5.680	4.861	4562611	19561807	0.788	0.459 #
9)	A Endosulfan I	6.092f	5.258f	7145775	165.1E6	1.291	4.193 #
10)	B gamma-Chl...	5.937	5.115	3425563	88028516	0.578	1.958 #
11)	B alpha-Chl...	6.024	5.179	15518962	288.8E6	2.511	6.695 #
12)	B 4,4'-DDE	6.192	5.363	903299	85176899	0.170	1.943 #
13)	MA Dieldrin	6.343	5.504	2656112	179.2E6	0.455	4.055 #
14)	MA Endrin	6.569	5.779	4251849	54260173	0.858	1.340 #
15)	B Endosulfa...	6.786	6.077	1296192	31251235	0.259	0.832 #
16)	A 4,4'-DDD	6.714	5.919	4462258	-8518066	1.101	N.D. #
17)	MA 4,4'-DDT	7.013	6.169	5122702	79925937	1.246	2.279 #
18)	B Endrin al...	0.000	6.267f	0	22211341	N.D.	0.802 #
19)	B Endosulfa...	7.138	6.468	149814	37707744	0.032	1.052 #
20)	A Methoxychlor	0.000	6.725f	0	102.4E6	N.D.	5.873 #
21)	B Endrin ke...	7.607f	0.000	20269331	0	4.172	N.D. #
22)	Mirex	0.000	7.188	0	46629993	N.D.	1.815 #
23)	Chlordane-1	4.681f	3.893	5134950	133.3E6	27.173	106.992 #
24)	Chlordane-2	5.249	4.493	2971875	6924425	15.388	5.308 #
25)	Chlordane-3	5.937	5.115	3425563	88028516	4.491	22.620 #
26)	Chlordane-4	6.024	5.179	15518962	288.8E6	16.017	86.434 #
27)	Chlordane-5	6.864	6.077	7249216	31251235	48.245	21.172 #

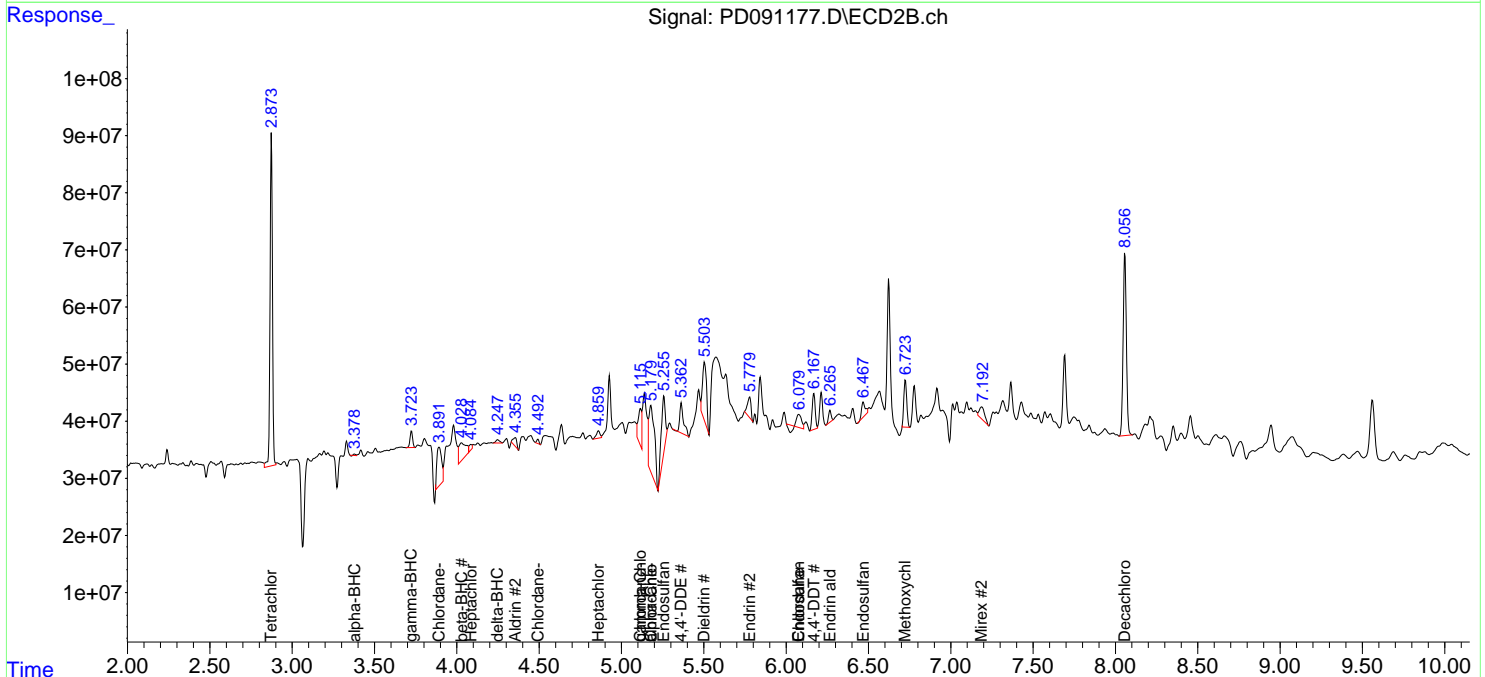
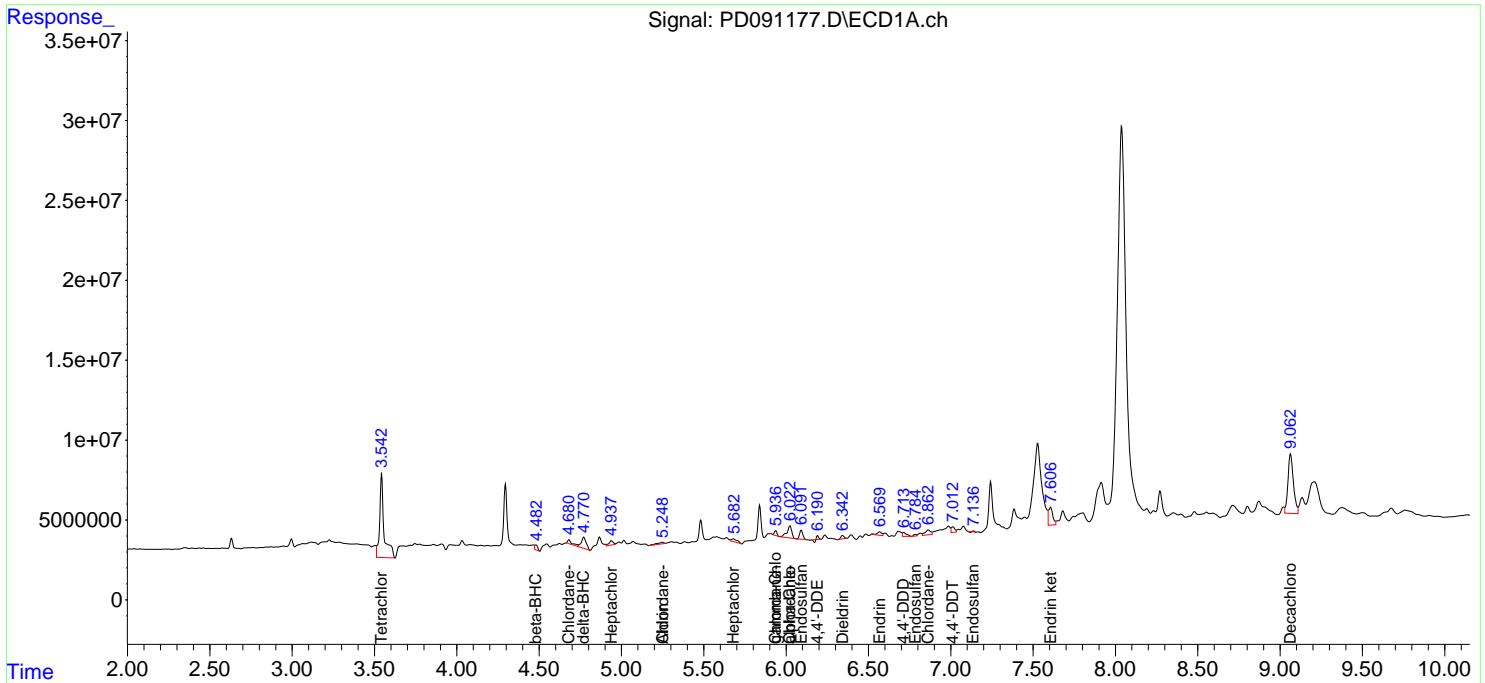
(f)=RT Delta > 1/2 Window (#)=Amounts differ by > 25% (m)=manual int.

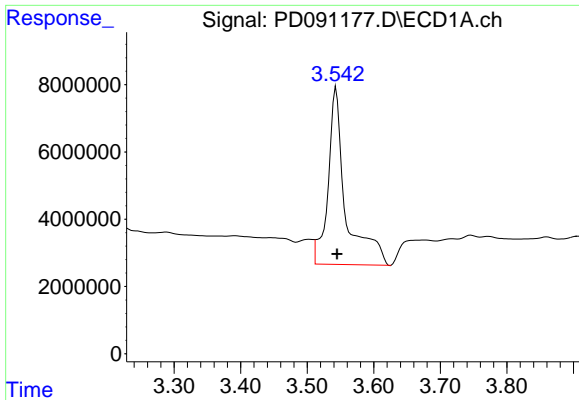
Data Path : Z:\pestpcbsrv\HPCHEM1\ECD\_D\Data\PD111425\  
 Data File : PD091177.D  
 Signal(s) : Signal #1: ECD1A.ch Signal #2: ECD2B.ch  
 Acq On : 14 Nov 2025 14:33  
 Operator : AR\AJ  
 Sample : Q3633-05  
 Misc :  
 ALS Vial : 16 Sample Multiplier: 1

Instrument :  
 ECD\_D  
 ClientSampleId :  
 ETGI-368

Integration File signal 1: autoint1.e  
 Integration File signal 2: autoint2.e  
 Quant Time: Nov 15 01:09:15 2025  
 Quant Method : Z:\pestpcbsrv\HPCHEM1\ECD\_D\Method\PD101725.M  
 Quant Title : GC Extractables  
 QLast Update : Fri Oct 17 17:43:28 2025  
 Response via : Initial Calibration  
 Integrator: ChemStation

Volume Inj. : 1 µl  
 Signal #1 Phase : ZB-MR1 Signal #2 Phase: ZB-MR2  
 Signal #1 Info : 30M x 0.32mm x0.5 Signal #2 Info : 30M x 0.32mm x 0.25µm

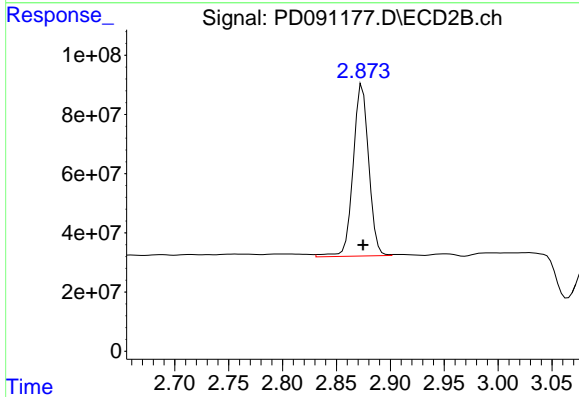




#1 Tetrachloro-m-xylene

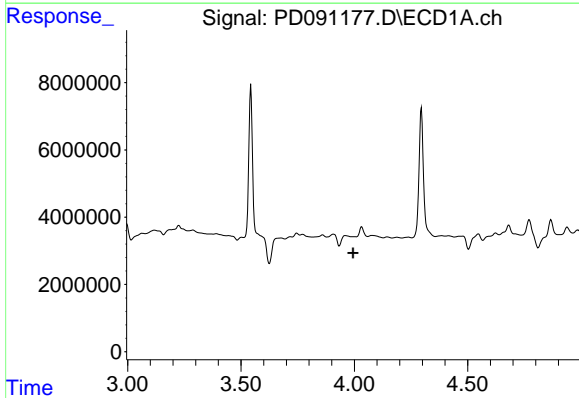
R.T.: 3.543 min  
 Delta R.T.: -0.002 min  
 Response: 97607295  
 Conc: 31.34 ng/ml

Instrument :  
 ECD\_D  
 ClientSampleId :  
 ETGI-368



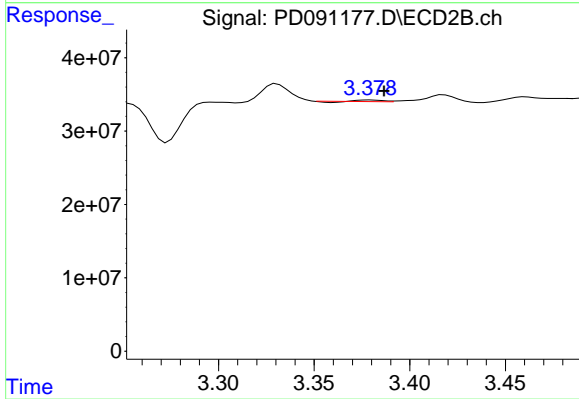
#1 Tetrachloro-m-xylene

R.T.: 2.874 min  
 Delta R.T.: 0.000 min  
 Response: 585146568  
 Conc: 19.65 ng/ml



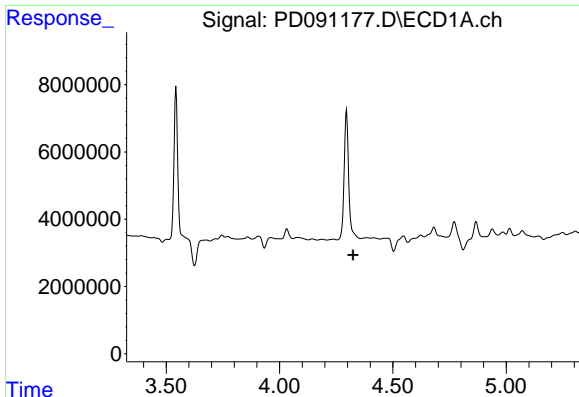
#2 alpha-BHC

R.T.: 0.000 min  
 Exp R.T. : 3.994 min  
 Response: 0  
 Conc: N.D.



#2 alpha-BHC

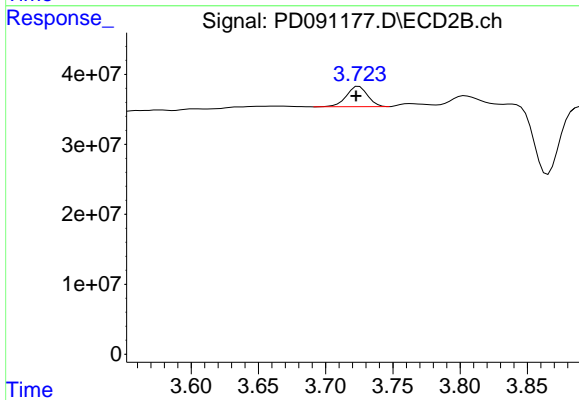
R.T.: 3.379 min  
 Delta R.T.: -0.008 min  
 Response: 1406170  
 Conc: 0.03 ng/ml



#3 gamma-BHC (Lindane)

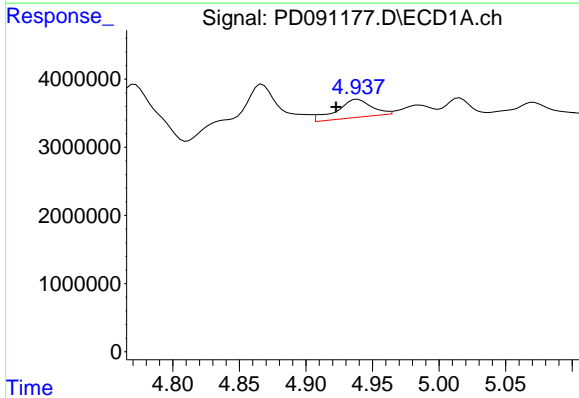
R.T.: 0.000 min  
Exp R.T.: 4.325 min  
Response: 0  
Conc: N.D.

Instrument :  
ECD\_D  
ClientSampleId :  
ETGI-368



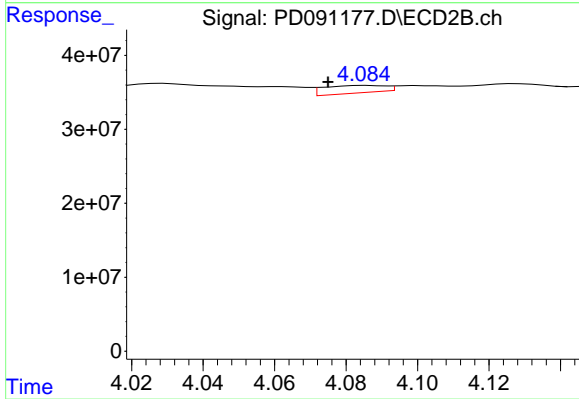
#3 gamma-BHC (Lindane)

R.T.: 3.725 min  
Delta R.T.: 0.002 min  
Response: 31881830  
Conc: 0.67 ng/ml



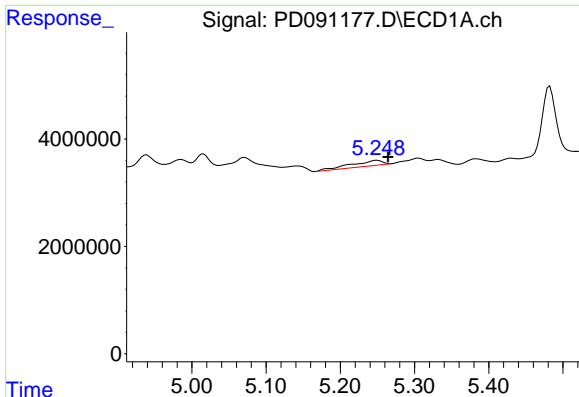
#4 Heptachlor

R.T.: 4.939 min  
Delta R.T.: 0.016 min  
Response: 4813060  
Conc: 0.86 ng/ml



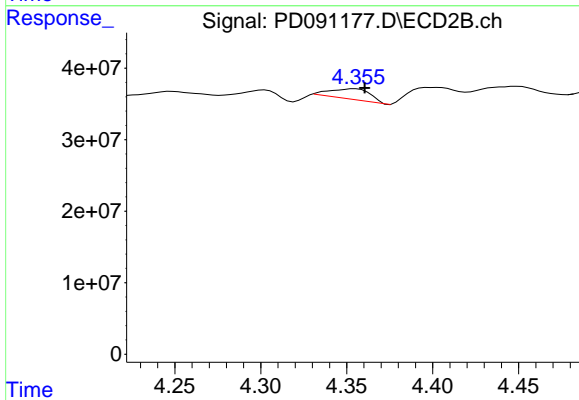
#4 Heptachlor

R.T.: 4.086 min  
Delta R.T.: 0.011 min  
Response: 12129006  
Conc: 0.27 ng/ml

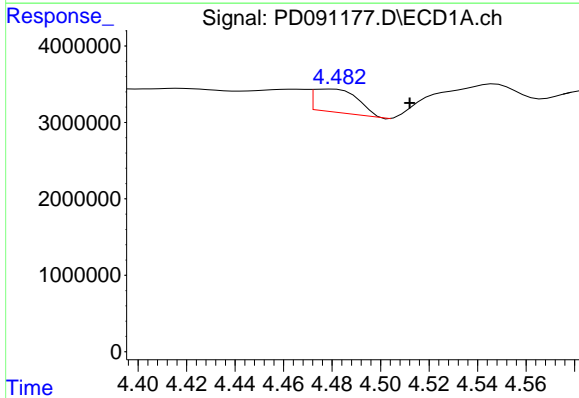


#5 Aldrin  
 R.T.: 5.249 min  
 Delta R.T.: -0.015 min  
 Response: 2971875  
 Conc: 0.45 ng/ml

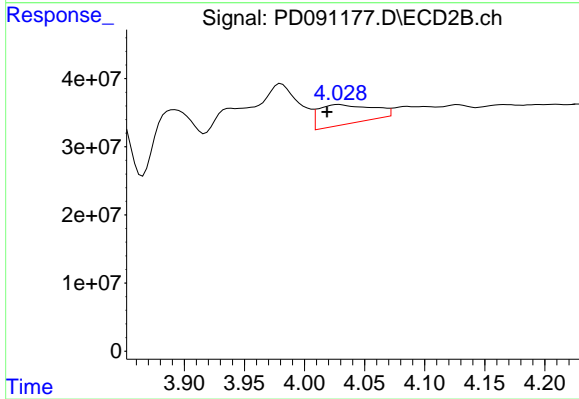
Instrument :  
 ECD\_D  
 ClientSampleId :  
 ETGI-368



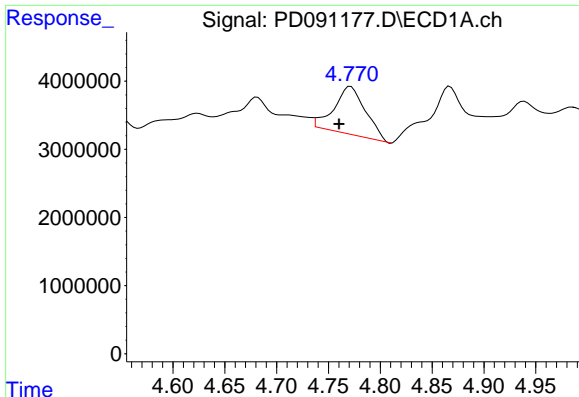
#5 Aldrin  
 R.T.: 4.355 min  
 Delta R.T.: -0.005 min  
 Response: 24124097  
 Conc: 0.52 ng/ml



#6 beta-BHC  
 R.T.: 4.480 min  
 Delta R.T.: -0.032 min  
 Response: 3892472  
 Conc: 1.49 ng/ml



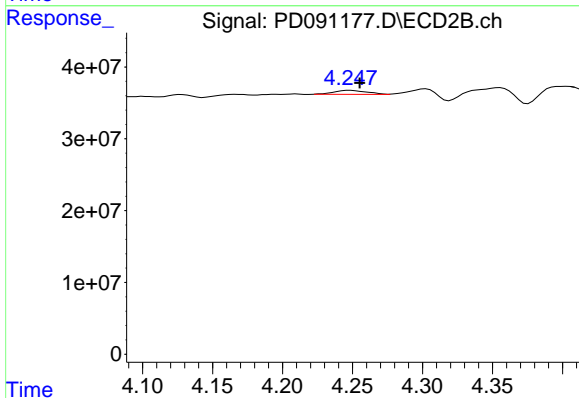
#6 beta-BHC  
 R.T.: 4.029 min  
 Delta R.T.: 0.010 min  
 Response: 88853385  
 Conc: 4.48 ng/ml



#7 delta-BHC

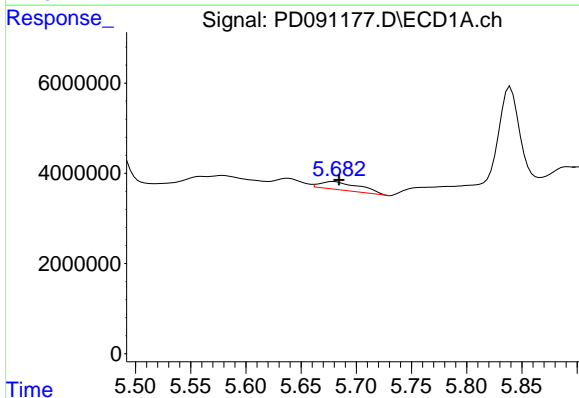
R.T.: 4.772 min  
 Delta R.T.: 0.011 min  
 Response: 14827177  
 Conc: 2.19 ng/ml

Instrument :  
 ECD\_D  
 ClientSampleId :  
 ETGI-368



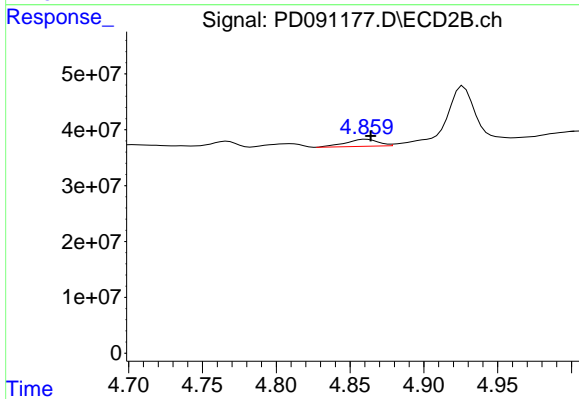
#7 delta-BHC

R.T.: 4.248 min  
 Delta R.T.: -0.007 min  
 Response: 9007764  
 Conc: 0.19 ng/ml



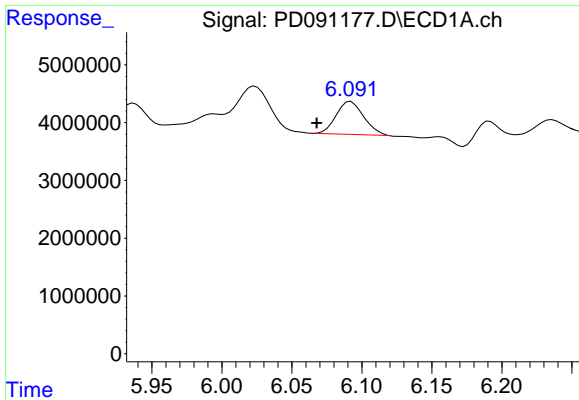
#8 Heptachlor epoxide

R.T.: 5.680 min  
 Delta R.T.: -0.005 min  
 Response: 4562611  
 Conc: 0.79 ng/ml



#8 Heptachlor epoxide

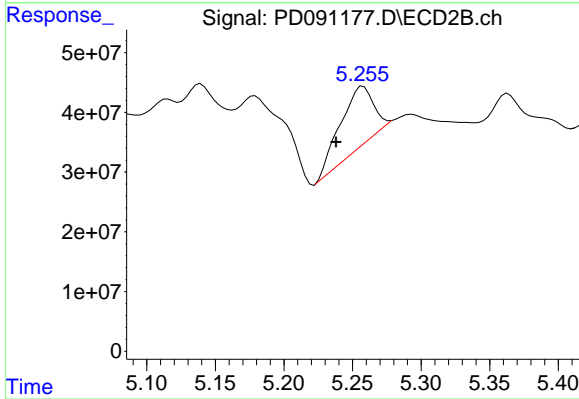
R.T.: 4.861 min  
 Delta R.T.: -0.003 min  
 Response: 19561807  
 Conc: 0.46 ng/ml



#9 Endosulfan I

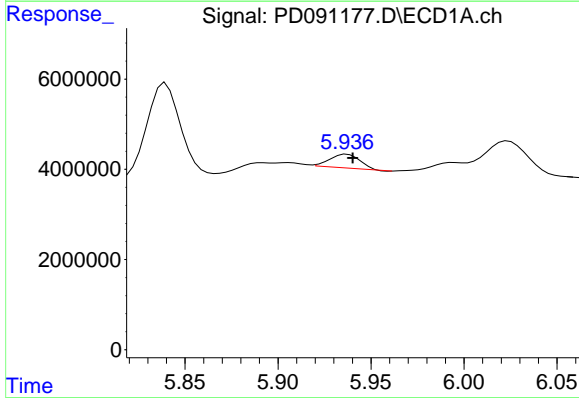
R.T.: 6.092 min  
 Delta R.T.: 0.024 min  
 Response: 7145775  
 Conc: 1.29 ng/ml

Instrument :  
 ECD\_D  
 ClientSampleId :  
 ETGI-368



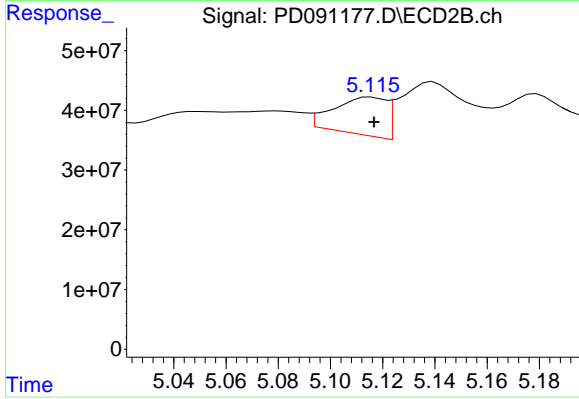
#9 Endosulfan I

R.T.: 5.258 min  
 Delta R.T.: 0.020 min  
 Response: 165149079  
 Conc: 4.19 ng/ml



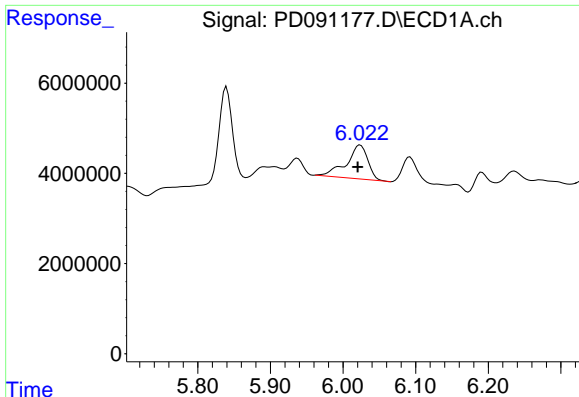
#10 gamma-Chlordane

R.T.: 5.937 min  
 Delta R.T.: -0.003 min  
 Response: 3425563  
 Conc: 0.58 ng/ml



#10 gamma-Chlordane

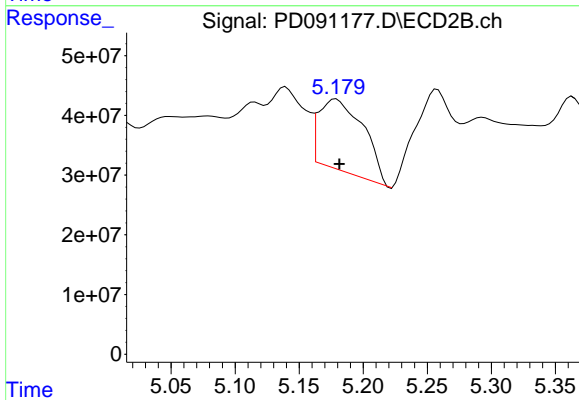
R.T.: 5.115 min  
 Delta R.T.: -0.001 min  
 Response: 88028516  
 Conc: 1.96 ng/ml



#11 alpha-Chlordane

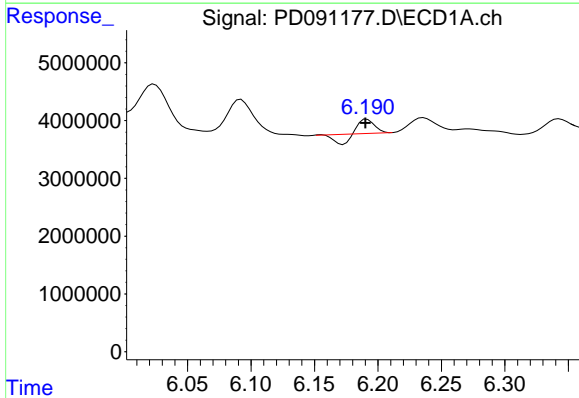
R.T.: 6.024 min  
 Delta R.T.: 0.003 min  
 Response: 15518962  
 Conc: 2.51 ng/ml

Instrument :  
 ECD\_D  
 ClientSampleId :  
 ETGI-368



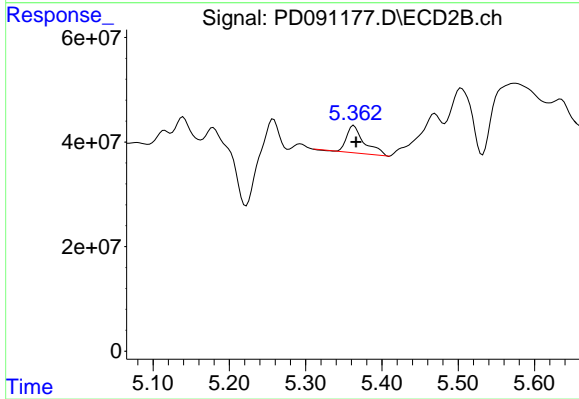
#11 alpha-Chlordane

R.T.: 5.179 min  
 Delta R.T.: -0.003 min  
 Response: 288796562  
 Conc: 6.69 ng/ml



#12 4,4'-DDE

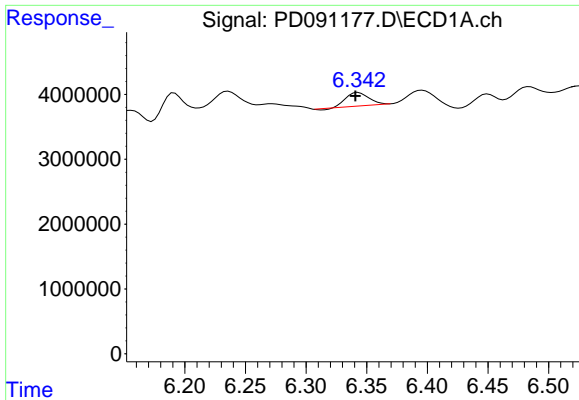
R.T.: 6.192 min  
 Delta R.T.: 0.001 min  
 Response: 903299  
 Conc: 0.17 ng/ml



#12 4,4'-DDE

R.T.: 5.363 min  
 Delta R.T.: -0.003 min  
 Response: 85176899  
 Conc: 1.94 ng/ml

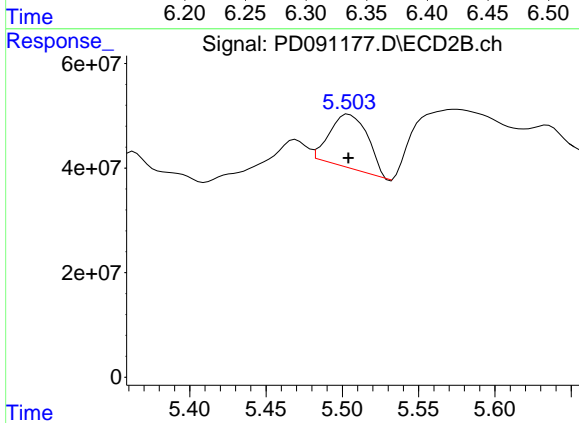




#13 Dieldrin

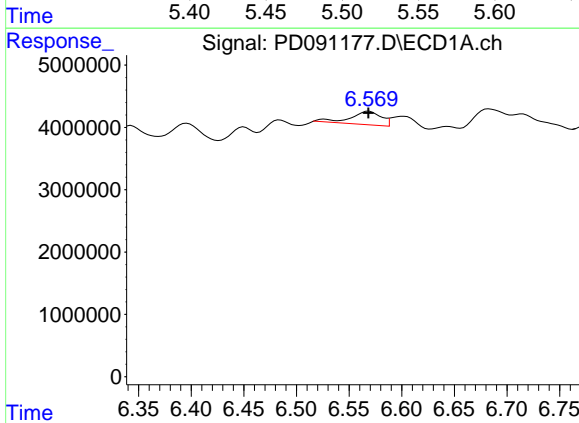
R.T.: 6.343 min  
 Delta R.T.: 0.003 min  
 Response: 2656112  
 Conc: 0.46 ng/ml

Instrument :  
 ECD\_D  
 ClientSampleId :  
 ETGI-368



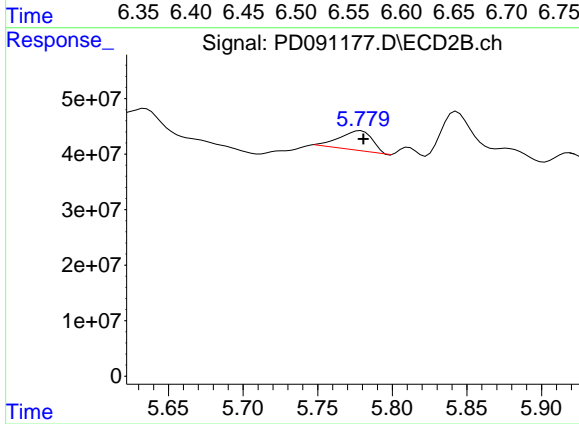
#13 Dieldrin

R.T.: 5.504 min  
 Delta R.T.: 0.000 min  
 Response: 179170091  
 Conc: 4.06 ng/ml



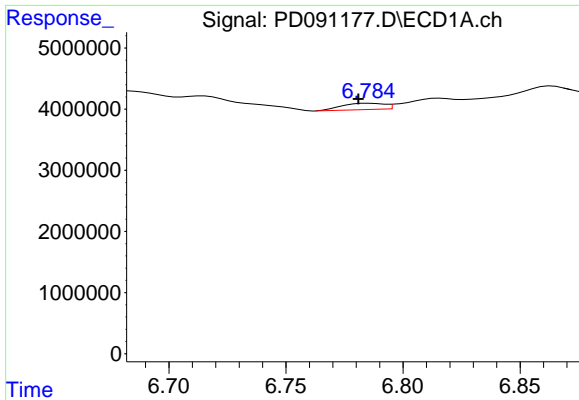
#14 Endrin

R.T.: 6.569 min  
 Delta R.T.: 0.000 min  
 Response: 4251849  
 Conc: 0.86 ng/ml



#14 Endrin

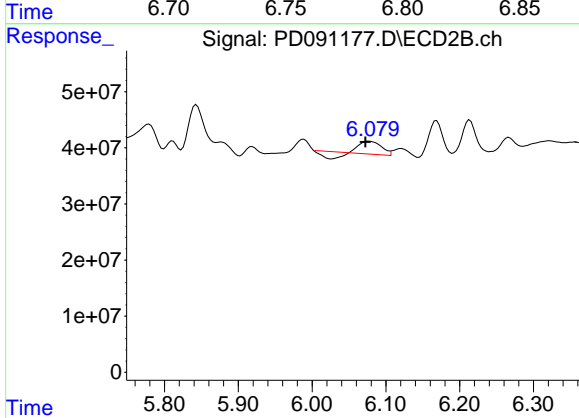
R.T.: 5.779 min  
 Delta R.T.: -0.002 min  
 Response: 54260173  
 Conc: 1.34 ng/ml



#15 Endosulfan II

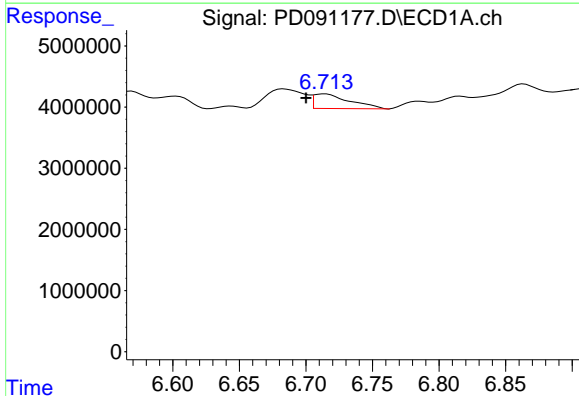
R.T.: 6.786 min  
 Delta R.T.: 0.005 min  
 Response: 1296192  
 Conc: 0.26 ng/ml

Instrument :  
 ECD\_D  
 ClientSampleId :  
 ETGI-368



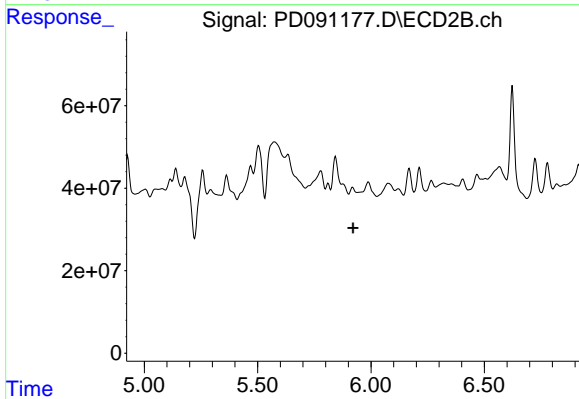
#15 Endosulfan II

R.T.: 6.077 min  
 Delta R.T.: 0.005 min  
 Response: 31251235  
 Conc: 0.83 ng/ml



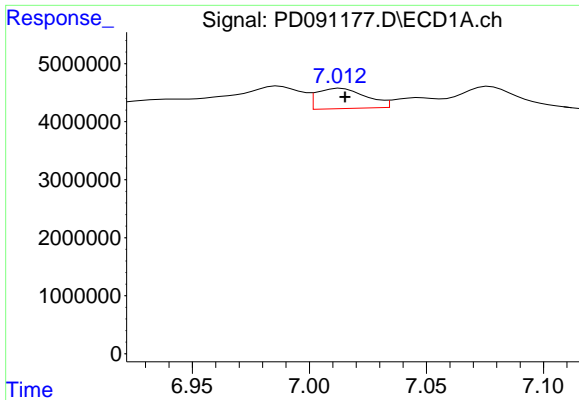
#16 4,4'-DDD

R.T.: 6.714 min  
 Delta R.T.: 0.014 min  
 Response: 4462258  
 Conc: 1.10 ng/ml



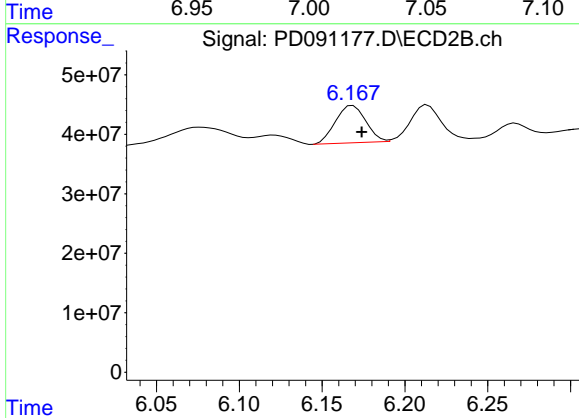
#16 4,4'-DDD

R.T.: 5.919 min  
 Delta R.T.: -0.002 min  
 Response: -8518066  
 Conc: N.D.

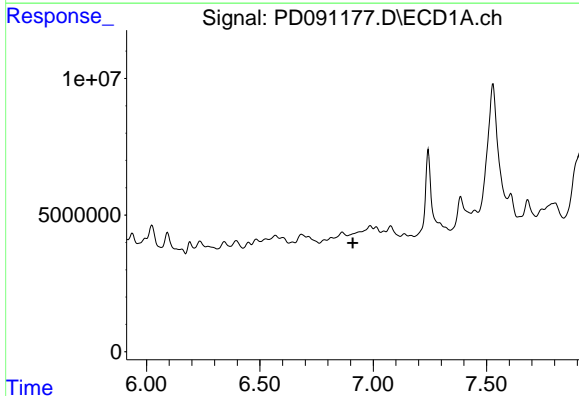


#17 4,4'-DDT  
 R.T.: 7.013 min  
 Delta R.T.: -0.002 min  
 Response: 5122702  
 Conc: 1.25 ng/ml

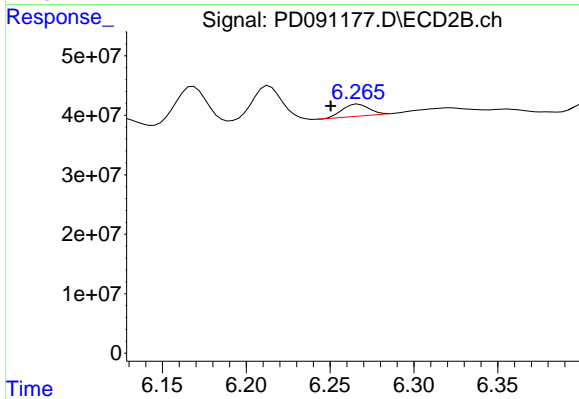
Instrument :  
 ECD\_D  
 ClientSampleId :  
 ETGI-368



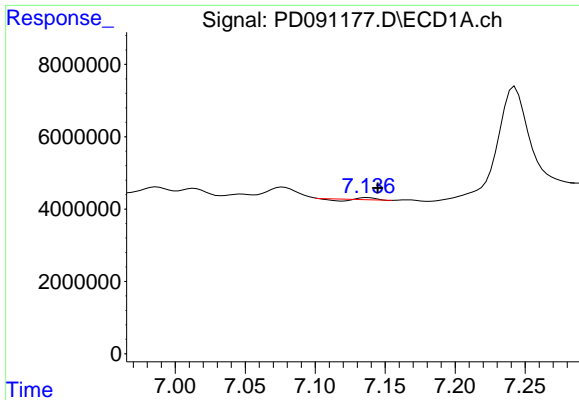
#17 4,4'-DDT  
 R.T.: 6.169 min  
 Delta R.T.: -0.005 min  
 Response: 79925937  
 Conc: 2.28 ng/ml



#18 Endrin aldehyde  
 R.T.: 0.000 min  
 Exp R.T. : 6.910 min  
 Response: 0  
 Conc: N.D.

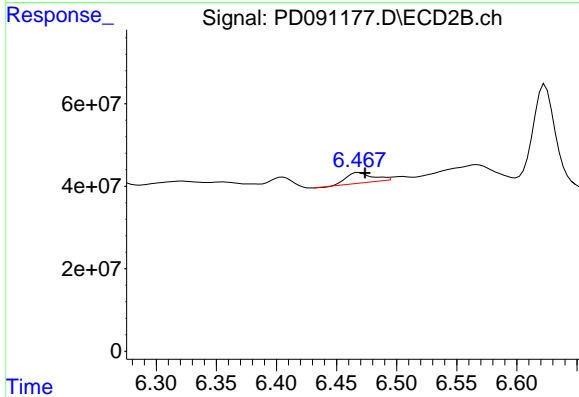


#18 Endrin aldehyde  
 R.T.: 6.267 min  
 Delta R.T.: 0.016 min  
 Response: 22211341  
 Conc: 0.80 ng/ml

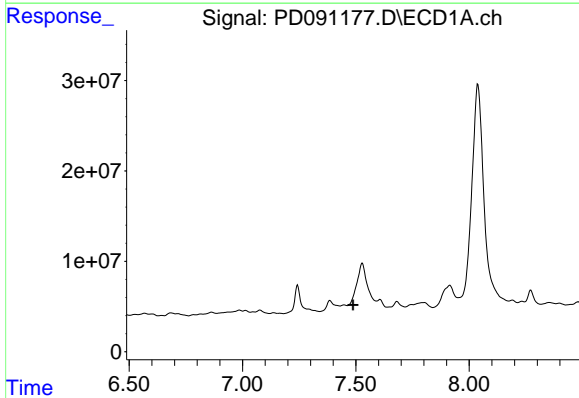


#19 Endosulfan Sulfate  
 R.T.: 7.138 min  
 Delta R.T.: -0.007 min  
 Response: 149814  
 Conc: 0.03 ng/ml

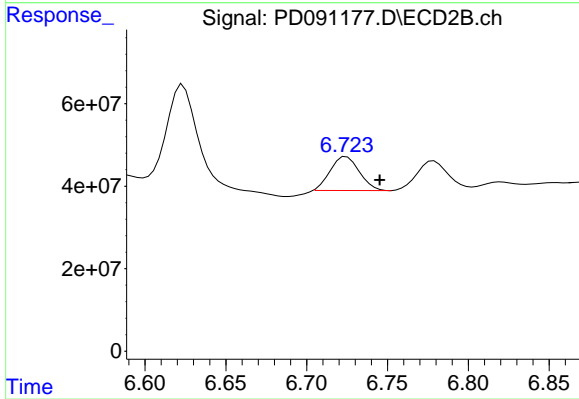
Instrument :  
 ECD\_D  
 ClientSampleId :  
 ETGI-368



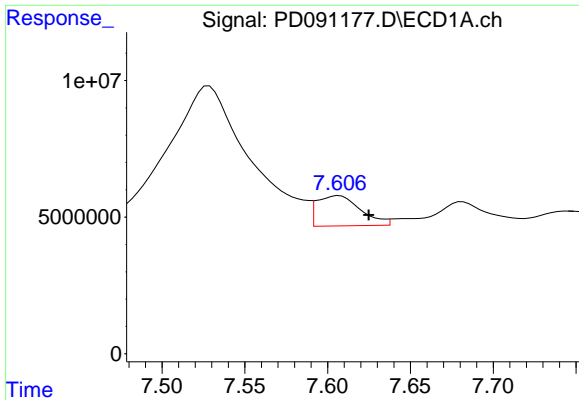
#19 Endosulfan Sulfate  
 R.T.: 6.468 min  
 Delta R.T.: -0.005 min  
 Response: 37707744  
 Conc: 1.05 ng/ml



#20 Methoxychlor  
 R.T.: 0.000 min  
 Exp R.T. : 7.488 min  
 Response: 0  
 Conc: N.D.



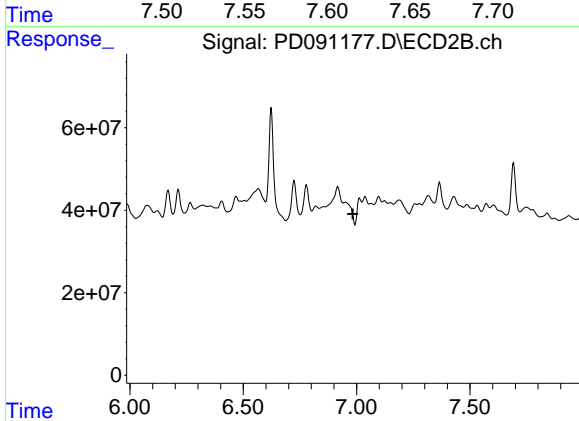
#20 Methoxychlor  
 R.T.: 6.725 min  
 Delta R.T.: -0.021 min  
 Response: 102351046  
 Conc: 5.87 ng/ml



#21 Endrin ketone

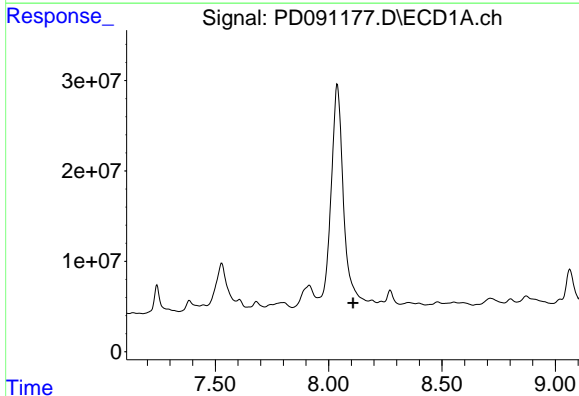
R.T.: 7.607 min  
 Delta R.T.: -0.018 min  
 Response: 20269331  
 Conc: 4.17 ng/ml

Instrument :  
 ECD\_D  
 ClientSampleId :  
 ETGI-368



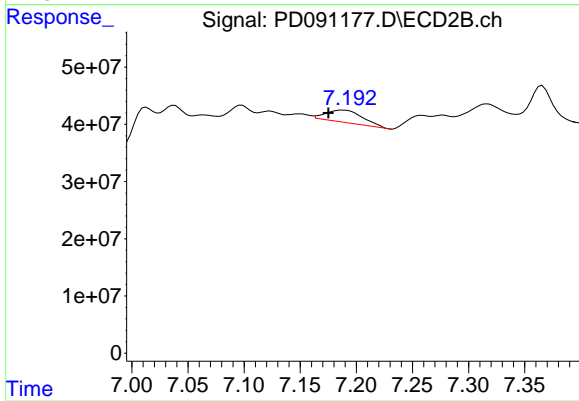
#21 Endrin ketone

R.T.: 0.000 min  
 Exp R.T. : 6.983 min  
 Response: 0  
 Conc: N.D.



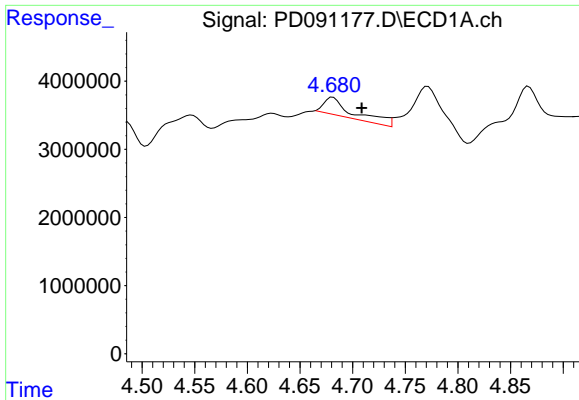
#22 Mirex

R.T.: 0.000 min  
 Exp R.T. : 8.107 min  
 Response: 0  
 Conc: N.D.



#22 Mirex

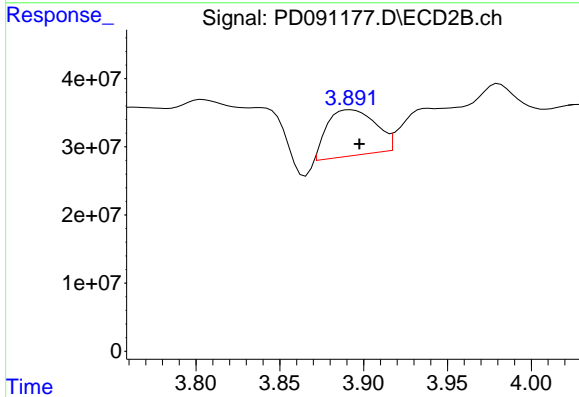
R.T.: 7.188 min  
 Delta R.T.: 0.013 min  
 Response: 46629993  
 Conc: 1.82 ng/ml



#23 Chlordane-1

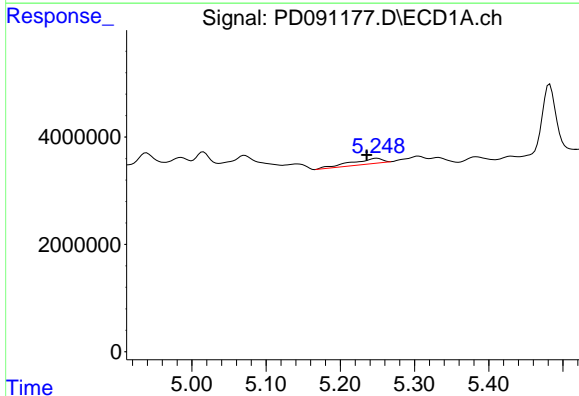
R.T.: 4.681 min  
 Delta R.T.: -0.027 min  
 Response: 5134950  
 Conc: 27.17 ng/ml

Instrument :  
 ECD\_D  
 ClientSampleId :  
 ETGI-368



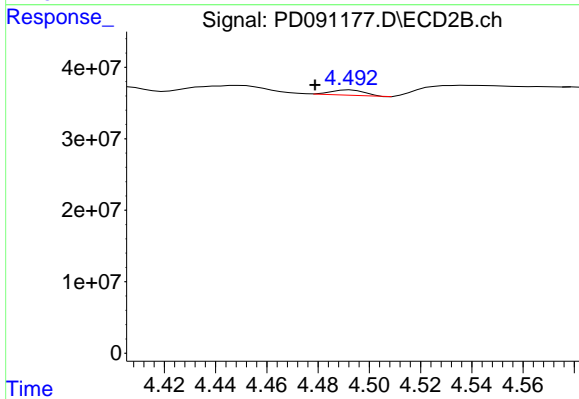
#23 Chlordane-1

R.T.: 3.893 min  
 Delta R.T.: -0.005 min  
 Response: 133340732  
 Conc: 106.99 ng/ml



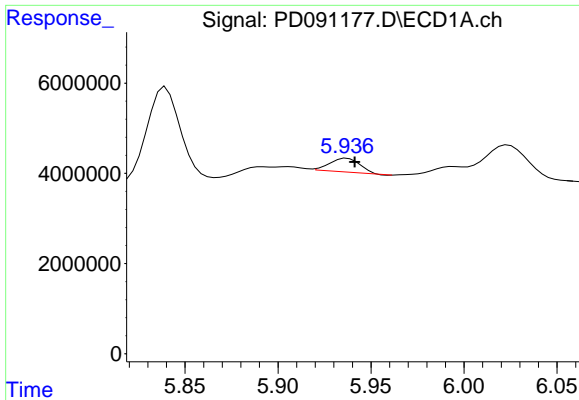
#24 Chlordane-2

R.T.: 5.249 min  
 Delta R.T.: 0.013 min  
 Response: 2971875  
 Conc: 15.39 ng/ml



#24 Chlordane-2

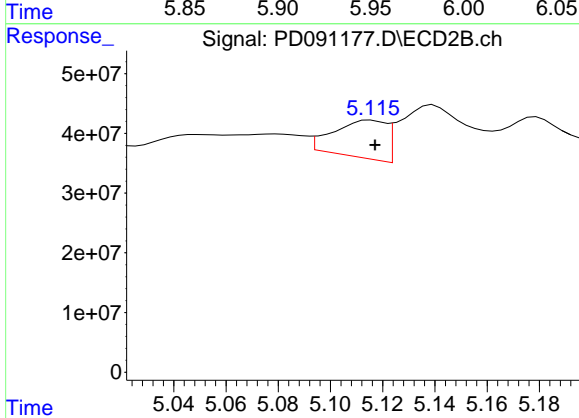
R.T.: 4.493 min  
 Delta R.T.: 0.014 min  
 Response: 6924425  
 Conc: 5.31 ng/ml



#25 Chlordane-3

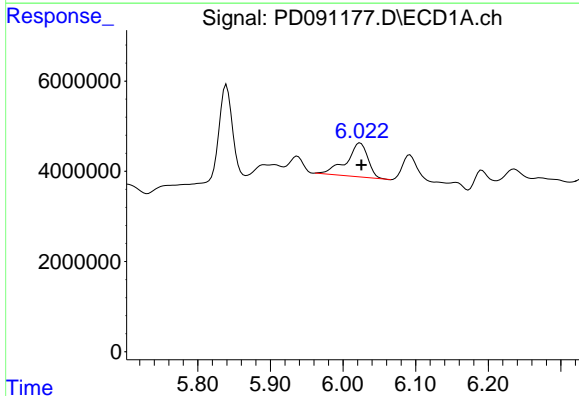
R.T.: 5.937 min  
 Delta R.T.: -0.004 min  
 Response: 3425563  
 Conc: 4.49 ng/ml

Instrument :  
 ECD\_D  
 ClientSampleId :  
 ETGI-368



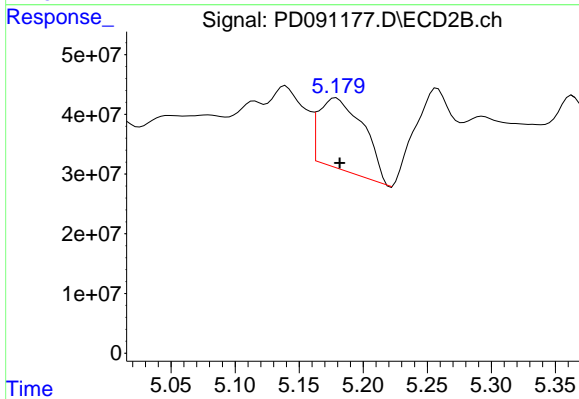
#25 Chlordane-3

R.T.: 5.115 min  
 Delta R.T.: -0.002 min  
 Response: 88028516  
 Conc: 22.62 ng/ml



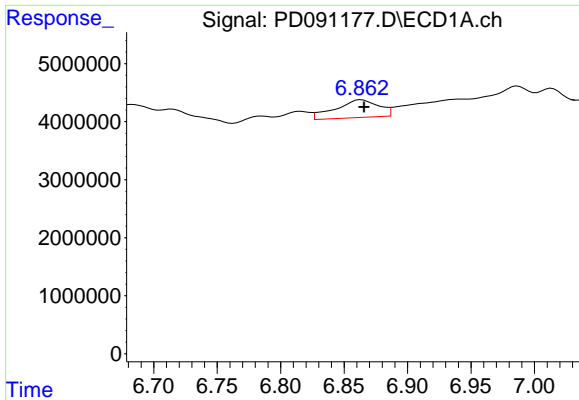
#26 Chlordane-4

R.T.: 6.024 min  
 Delta R.T.: -0.002 min  
 Response: 15518962  
 Conc: 16.02 ng/ml



#26 Chlordane-4

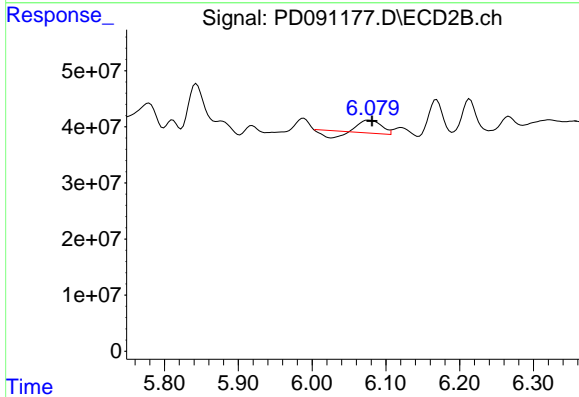
R.T.: 5.179 min  
 Delta R.T.: -0.003 min  
 Response: 288796562  
 Conc: 86.43 ng/ml



#27 Chlordane-5

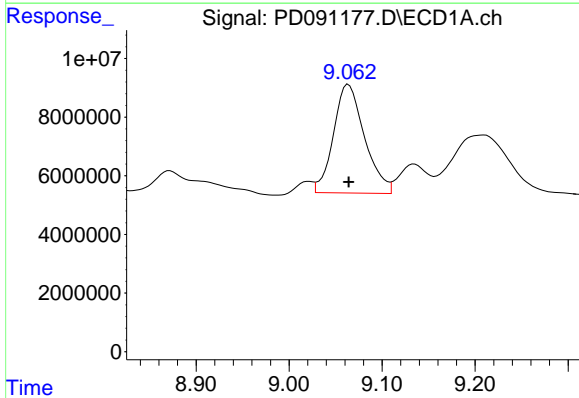
R.T.: 6.864 min  
 Delta R.T.: -0.002 min  
 Response: 7249216  
 Conc: 48.24 ng/ml

Instrument :  
 ECD\_D  
 ClientSampleId :  
 ETGI-368



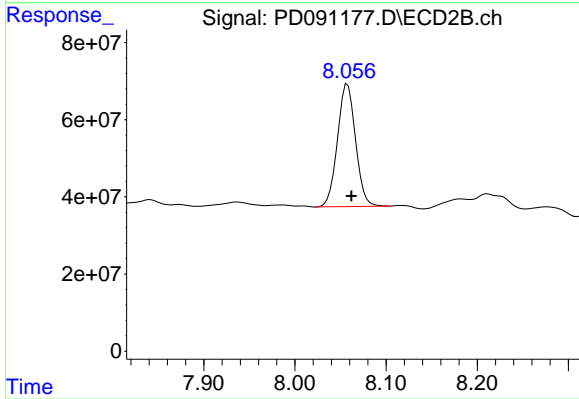
#27 Chlordane-5

R.T.: 6.077 min  
 Delta R.T.: -0.004 min  
 Response: 31251235  
 Conc: 21.17 ng/ml



#28 Decachlorobiphenyl

R.T.: 9.064 min  
 Delta R.T.: 0.000 min  
 Response: 86107923  
 Conc: 18.41 ng/ml



#28 Decachlorobiphenyl

R.T.: 8.058 min  
 Delta R.T.: -0.004 min  
 Response: 437800129  
 Conc: 14.45 ng/ml