

Data Path : Z:\pestpcbsrv\HPCHEM1\ECD_D\Data\PD111425\
 Data File : PD091178.D
 Signal(s) : Signal #1: ECD1A.ch Signal #2: ECD2B.ch
 Acq On : 14 Nov 2025 14:47
 Operator : AR\AJ
 Sample : I.BLK
 Misc :
 ALS Vial : 2 Sample Multiplier: 1

Instrument :
 ECD_D
 ClientSampleId :
 I.BLK

Integration File signal 1: autoint1.e
 Integration File signal 2: autoint2.e
 Quant Time: Nov 15 01:09:24 2025
 Quant Method : Z:\pestpcbsrv\HPCHEM1\ECD_D\Method\PD101725.M
 Quant Title : GC Extractables
 QLast Update : Fri Oct 17 17:43:28 2025
 Response via : Initial Calibration
 Integrator: ChemStation

Volume Inj. : 1 µl
 Signal #1 Phase : ZB-MR2 Signal #2 Phase: ZB-MR2
 Signal #1 Info : 30M x 0.32mm x0.5 Signal #2 Info : 30M x 0.32mm x 0.25µm

	Compound	RT#1	RT#2	Resp#1	Resp#2	ng/ml	ng/ml

System Monitoring Compounds							
1)	SA Tetrachlo...	3.544	2.874	67499047	750.6E6	21.675	25.206
28)	SA Decachlor...	9.063	8.058	87754204	623.6E6	18.759	20.585
Target Compounds							
2)	A alpha-BHC	3.992	3.379	89283	3025304	0.012	0.059 #
3)	MA gamma-BHC...	0.000	3.718	0	670326	N.D.	0.014 #
4)	MA Heptachlor	4.951f	4.078	6141661	1934761	1.099	0.043 #
5)	MB Aldrin	5.254	4.390f	128737	5147523	0.020	0.111 #
6)	B beta-BHC	0.000	4.030	0	4958753	N.D.	0.250 #
7)	B delta-BHC	4.772	4.255	11030945	2425175	1.631	0.051 #
8)	B Heptachlo...	5.675	4.883f	4045527	4169085	0.699	0.098 #
9)	A Endosulfan I	6.099f	0.000	520357	0	0.094	N.D. #
10)	B gamma-Chl...	5.932	5.117	2269443	6971125	0.383	0.155 #
11)	B alpha-Chl...	5.994f	5.183	6525125	23957200	1.056	0.555 #
12)	B 4,4'-DDE	0.000	5.376	0	4173933	N.D.	0.095 #
14)	MA Endrin	6.575	5.785	6996145	99134193	1.412	2.448 #
15)	B Endosulfa...	6.797f	6.064	1189970	3364822	0.238	0.090 #
16)	A 4,4'-DDD	6.699	5.922	2764155	-1124161	0.682	N.D. #
17)	MA 4,4'-DDT	7.026	6.173	1946129	1697252	0.473	0.048 #
18)	B Endrin al...	6.884f	6.256	778717	1544378	0.213	0.056 #
20)	A Methoxychlor	0.000	6.726f	0	20177915	N.D.	1.158 #
21)	B Endrin ke...	7.628	0.000	605497	0	0.125	N.D. #
22)	Mirex	0.000	7.173	0	54548000	N.D.	2.123 #
23)	Chlordane-1	0.000	3.890	0	1700816	N.D.	1.365 #
24)	Chlordane-2	5.254	4.449f	128737	1071418	0.667	0.821
25)	Chlordane-3	5.932	5.117	2269443	6971125	2.975	1.791 #
26)	Chlordane-4	0.000	5.183	0	23957200	N.D.	7.170 #
27)	Chlordane-5	6.868	6.083	1767891	4569618	11.766	3.096 #

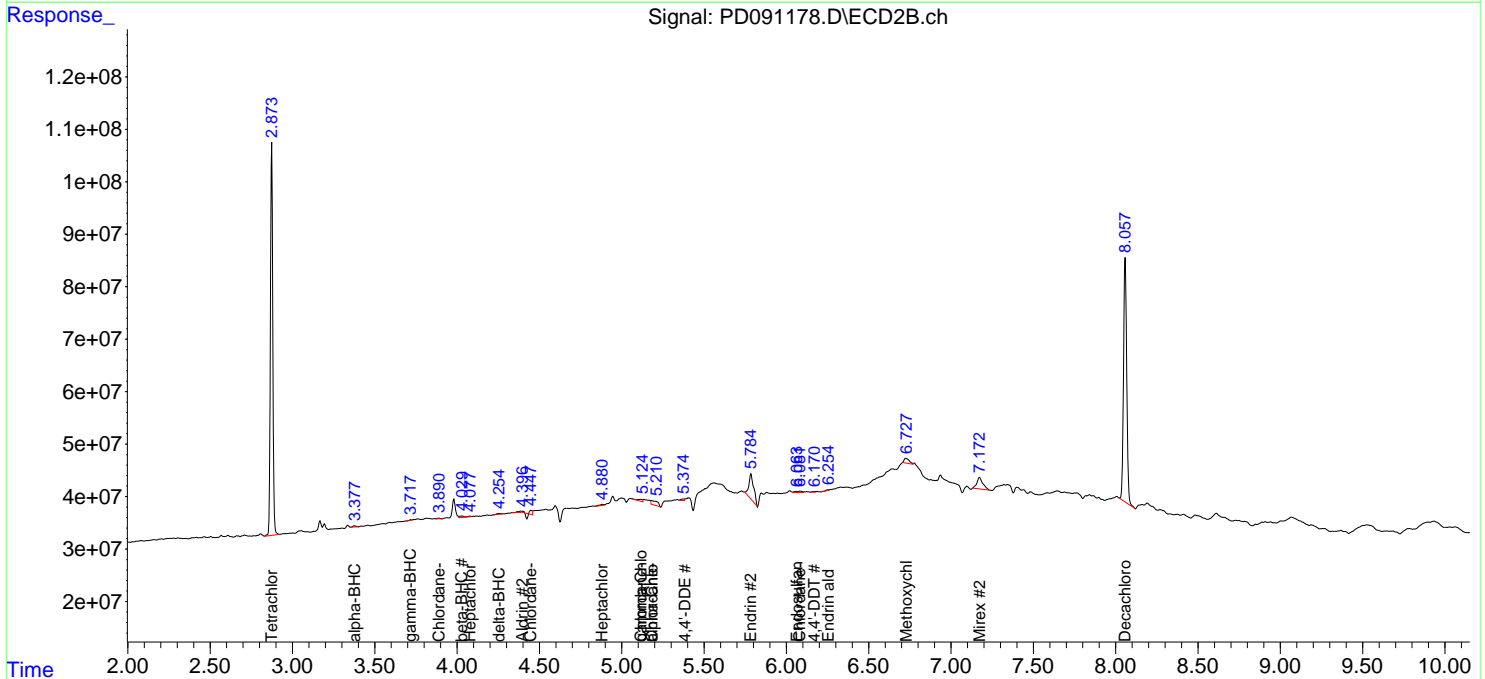
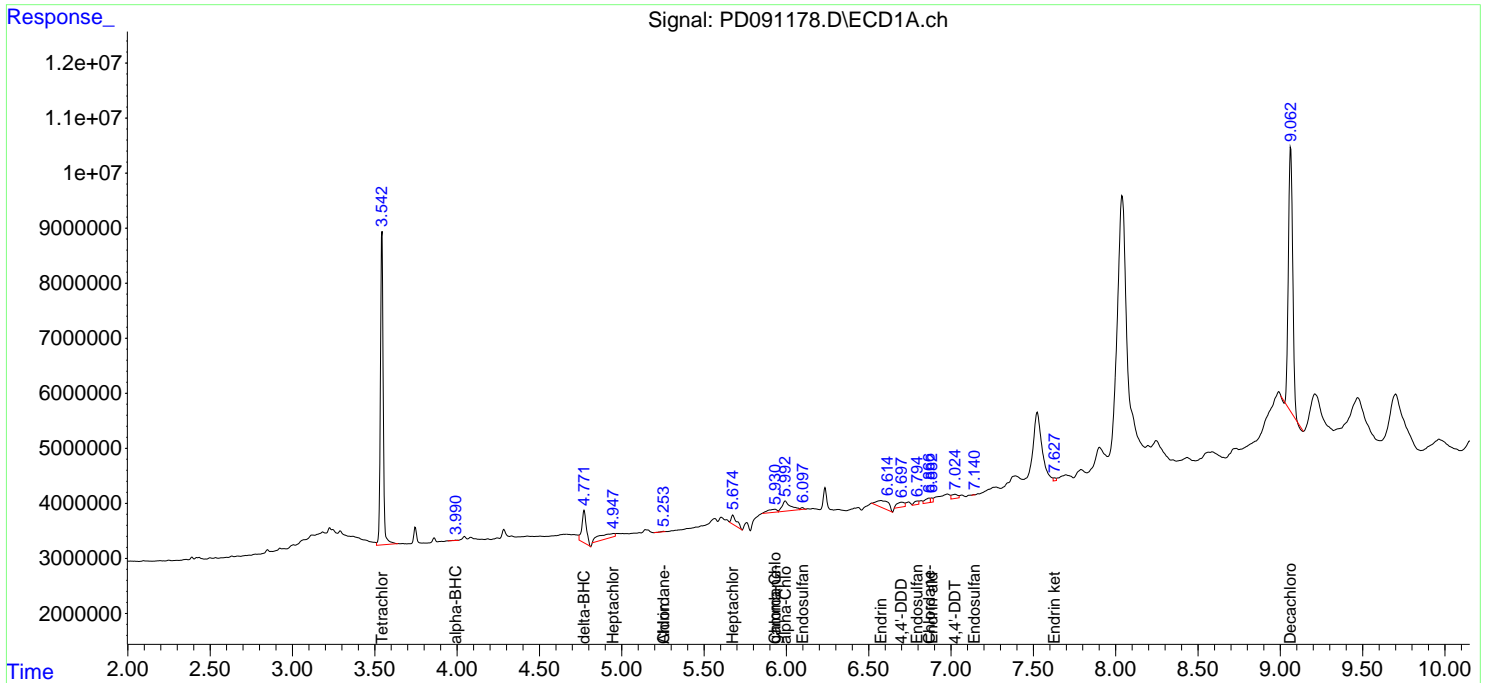
(f)=RT Delta > 1/2 Window (#)=Amounts differ by > 25% (m)=manual int.

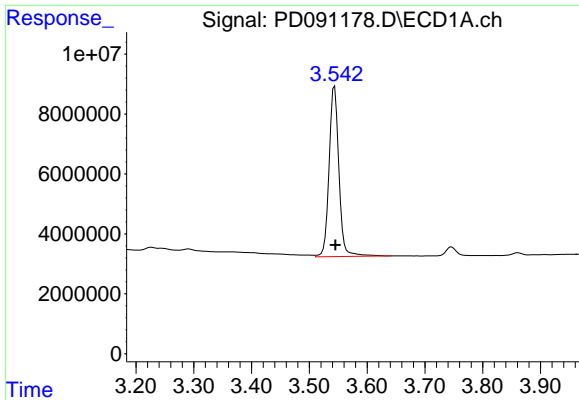
Data Path : Z:\pestpcbsrv\HPCHEM1\ECD_D\Data\PD111425\
 Data File : PD091178.D
 Signal(s) : Signal #1: ECD1A.ch Signal #2: ECD2B.ch
 Acq On : 14 Nov 2025 14:47
 Operator : AR\AJ
 Sample : I.BLK
 Misc :
 ALS Vial : 2 Sample Multiplier: 1

Instrument :
 ECD_D
 ClientSampleId :
 I.BLK

Integration File signal 1: autoint1.e
 Integration File signal 2: autoint2.e
 Quant Time: Nov 15 01:09:24 2025
 Quant Method : Z:\pestpcbsrv\HPCHEM1\ECD_D\Method\PD101725.M
 Quant Title : GC Extractables
 QLast Update : Fri Oct 17 17:43:28 2025
 Response via : Initial Calibration
 Integrator: ChemStation

Volume Inj. : 1 µl
 Signal #1 Phase : ZB-MR1 Signal #2 Phase: ZB-MR2
 Signal #1 Info : 30M x 0.32mm x0.5 Signal #2 Info : 30M x 0.32mm x 0.25µm

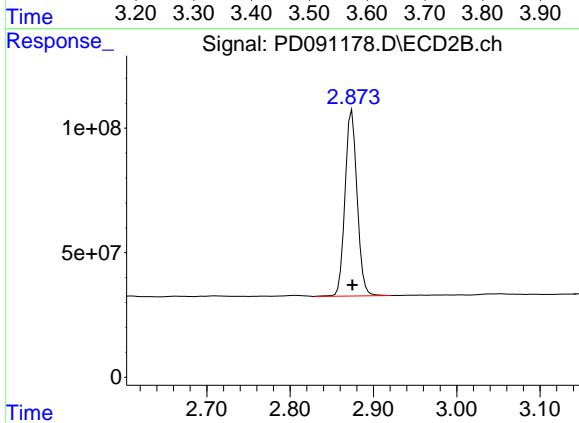




#1 Tetrachloro-m-xylene

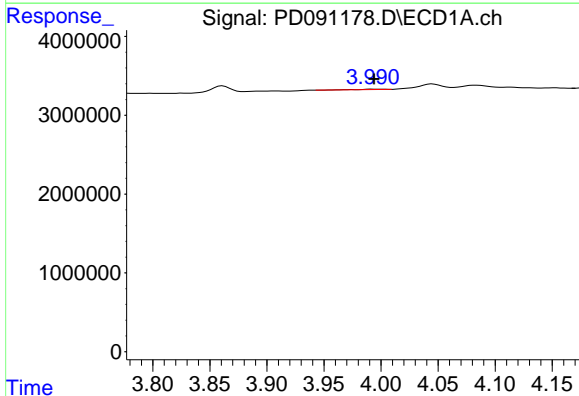
R.T.: 3.544 min
 Delta R.T.: -0.001 min
 Response: 67499047
 Conc: 21.67 ng/ml

Instrument :
 ECD_D
 ClientSampleId :
 I.BLK



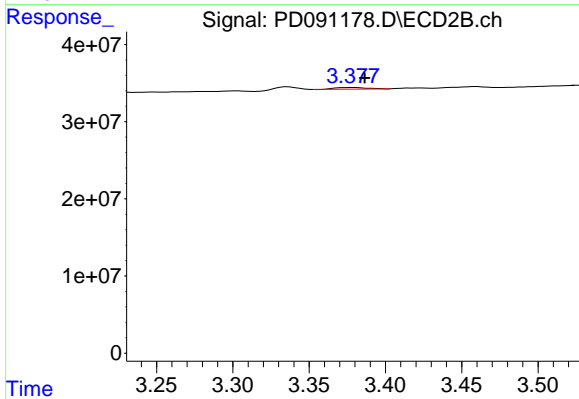
#1 Tetrachloro-m-xylene

R.T.: 2.874 min
 Delta R.T.: 0.000 min
 Response: 750571498
 Conc: 25.21 ng/ml



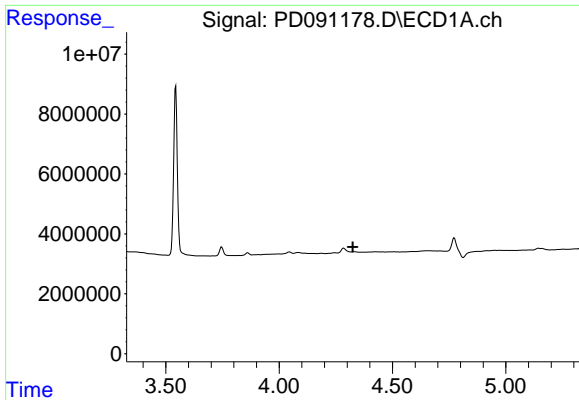
#2 alpha-BHC

R.T.: 3.992 min
 Delta R.T.: -0.002 min
 Response: 89283
 Conc: 0.01 ng/ml



#2 alpha-BHC

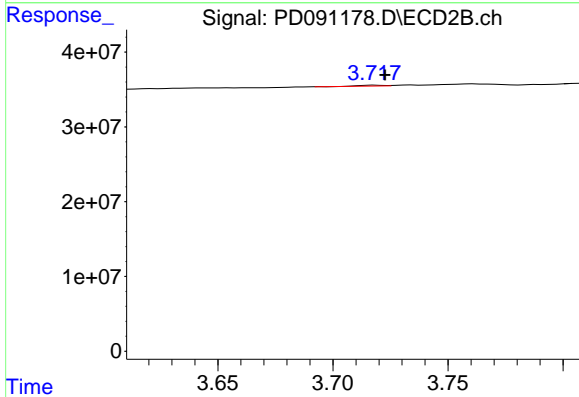
R.T.: 3.379 min
 Delta R.T.: -0.007 min
 Response: 3025304
 Conc: 0.06 ng/ml



#3 gamma-BHC (Lindane)

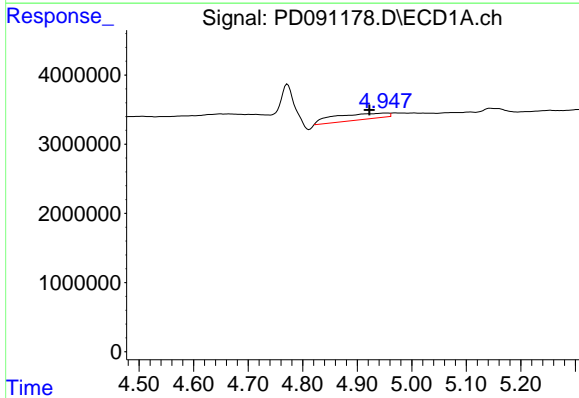
R.T.: 0.000 min
 Exp R.T.: 4.325 min
 Response: 0
 Conc: N.D.

Instrument :
 ECD_D
 ClientSampleId :
 I.BLK



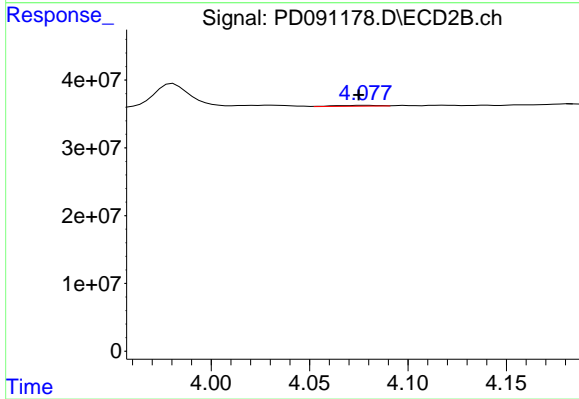
#3 gamma-BHC (Lindane)

R.T.: 3.718 min
 Delta R.T.: -0.005 min
 Response: 670326
 Conc: 0.01 ng/ml



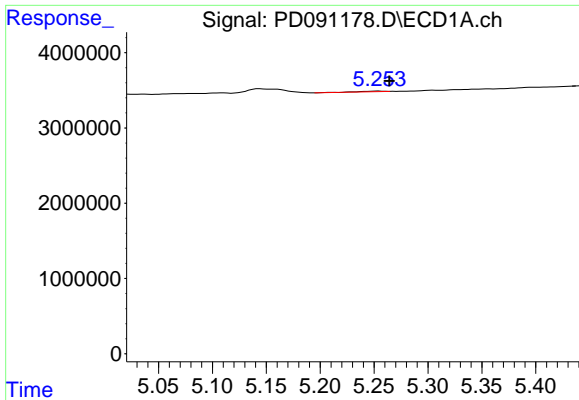
#4 Heptachlor

R.T.: 4.951 min
 Delta R.T.: 0.028 min
 Response: 6141661
 Conc: 1.10 ng/ml



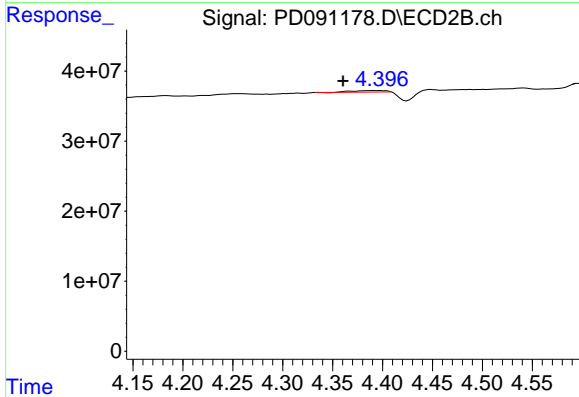
#4 Heptachlor

R.T.: 4.078 min
 Delta R.T.: 0.003 min
 Response: 1934761
 Conc: 0.04 ng/ml

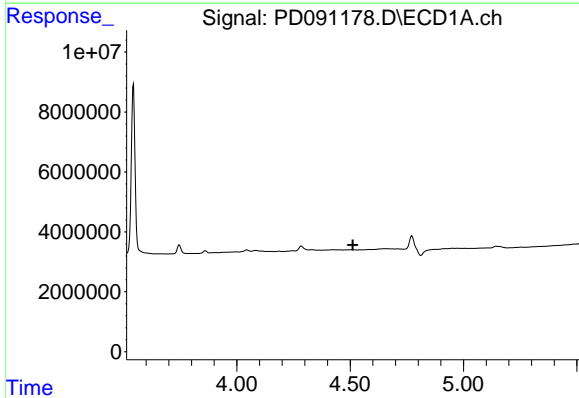


#5 Aldrin
 R.T.: 5.254 min
 Delta R.T.: -0.010 min
 Response: 128737
 Conc: 0.02 ng/ml

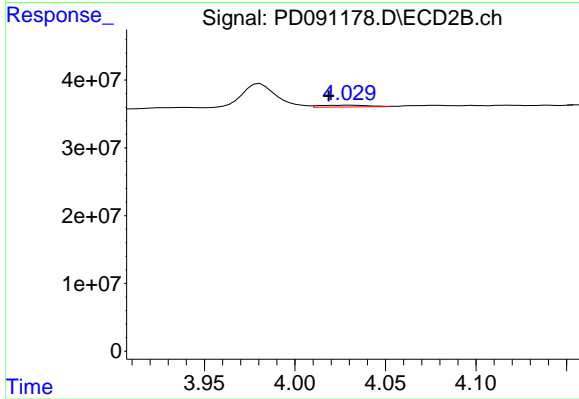
Instrument :
 ECD_D
 ClientSampleId :
 I.BLK



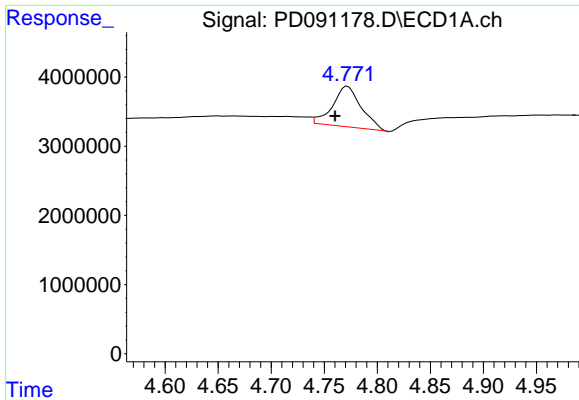
#5 Aldrin
 R.T.: 4.390 min
 Delta R.T.: 0.029 min
 Response: 5147523
 Conc: 0.11 ng/ml



#6 beta-BHC
 R.T.: 0.000 min
 Exp R.T. : 4.512 min
 Response: 0
 Conc: N.D.



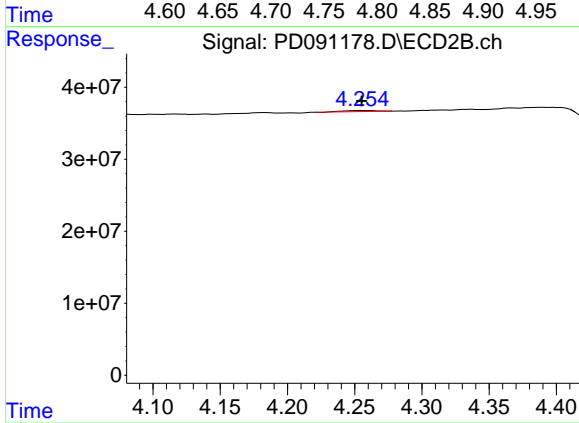
#6 beta-BHC
 R.T.: 4.030 min
 Delta R.T.: 0.012 min
 Response: 4958753
 Conc: 0.25 ng/ml



#7 delta-BHC

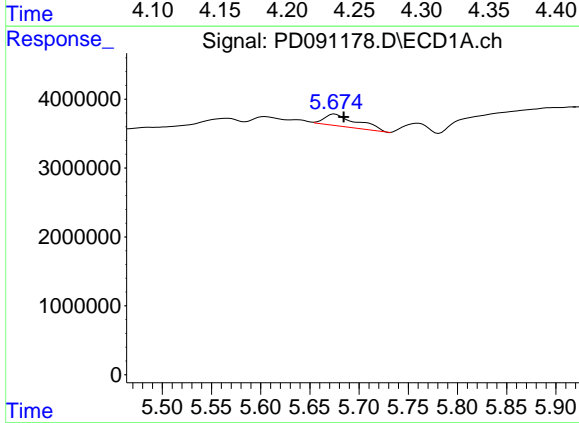
R.T.: 4.772 min
 Delta R.T.: 0.012 min
 Response: 11030945
 Conc: 1.63 ng/ml

Instrument :
 ECD_D
 ClientSampleId :
 I.BLK



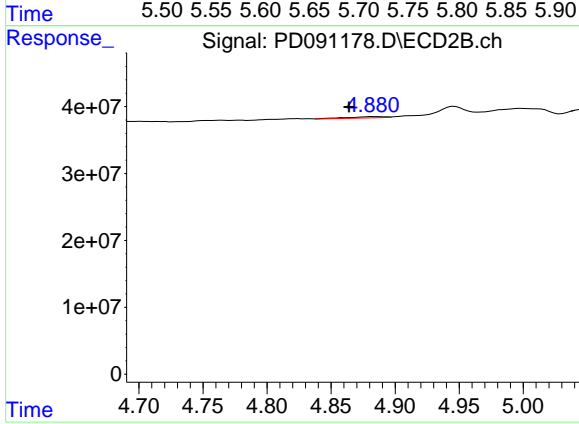
#7 delta-BHC

R.T.: 4.255 min
 Delta R.T.: 0.000 min
 Response: 2425175
 Conc: 0.05 ng/ml



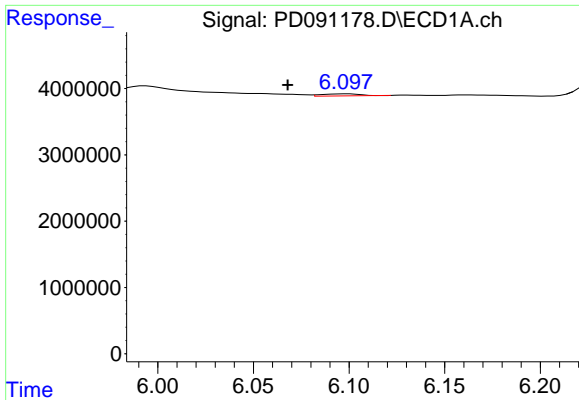
#8 Heptachlor epoxide

R.T.: 5.675 min
 Delta R.T.: -0.009 min
 Response: 4045527
 Conc: 0.70 ng/ml



#8 Heptachlor epoxide

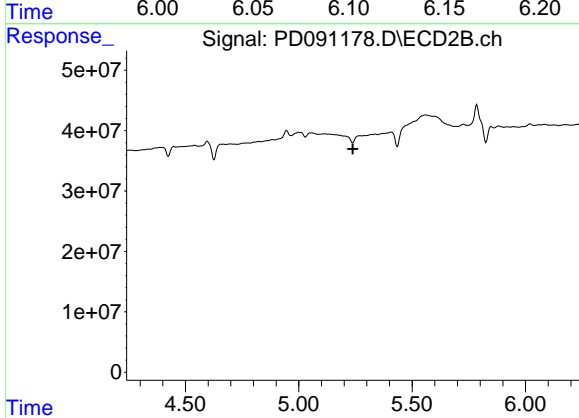
R.T.: 4.883 min
 Delta R.T.: 0.019 min
 Response: 4169085
 Conc: 0.10 ng/ml



#9 Endosulfan I

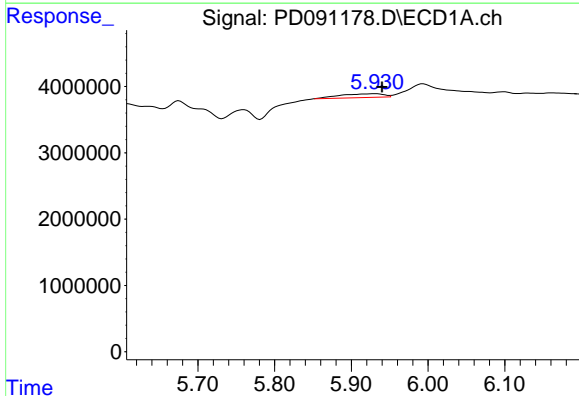
R.T.: 6.099 min
 Delta R.T.: 0.031 min
 Response: 520357
 Conc: 0.09 ng/ml

Instrument :
 ECD_D
 ClientSampleId :
 I.BLK



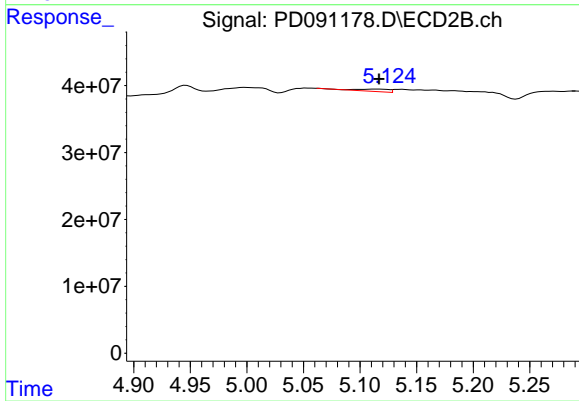
#9 Endosulfan I

R.T.: 0.000 min
 Exp R.T. : 5.238 min
 Response: 0
 Conc: N.D.



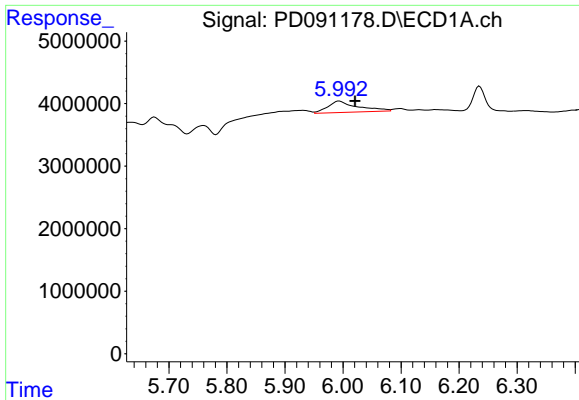
#10 gamma-Chlordane

R.T.: 5.932 min
 Delta R.T.: -0.009 min
 Response: 2269443
 Conc: 0.38 ng/ml



#10 gamma-Chlordane

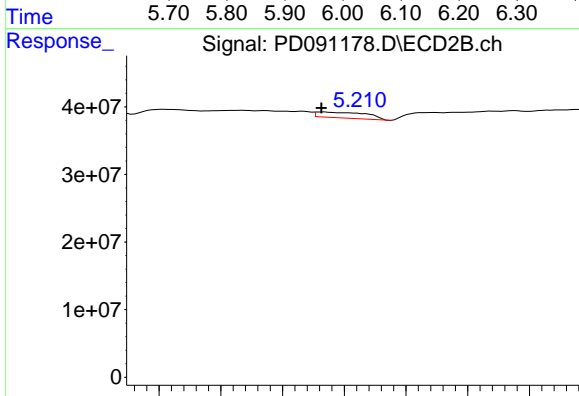
R.T.: 5.117 min
 Delta R.T.: 0.000 min
 Response: 6971125
 Conc: 0.16 ng/ml



#11 alpha-Chlordane

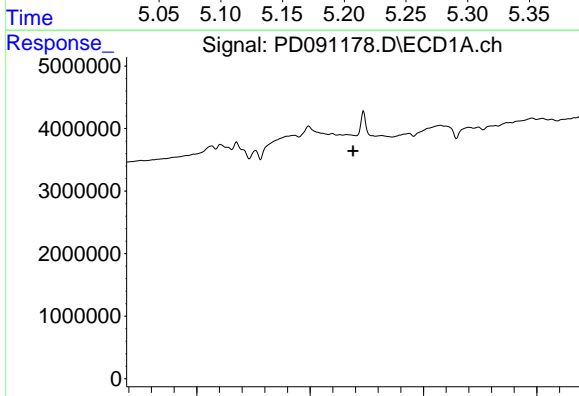
R.T.: 5.994 min
 Delta R.T.: -0.027 min
 Response: 6525125
 Conc: 1.06 ng/ml

Instrument :
 ECD_D
 ClientSampleId :
 I.BLK



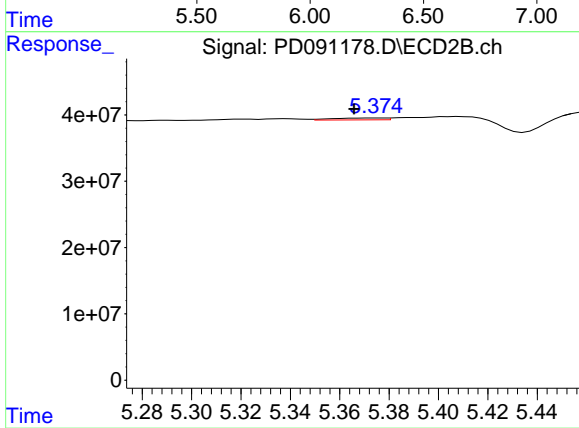
#11 alpha-Chlordane

R.T.: 5.183 min
 Delta R.T.: 0.002 min
 Response: 23957200
 Conc: 0.56 ng/ml



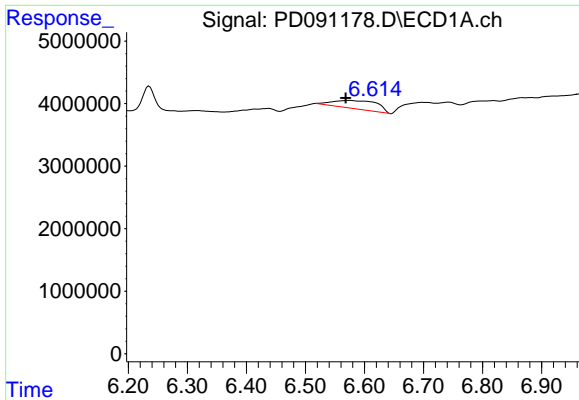
#12 4,4'-DDE

R.T.: 0.000 min
 Exp R.T. : 6.190 min
 Response: 0
 Conc: N.D.



#12 4,4'-DDE

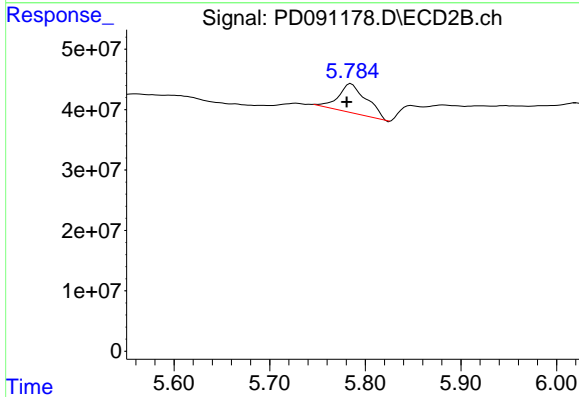
R.T.: 5.376 min
 Delta R.T.: 0.010 min
 Response: 4173933
 Conc: 0.10 ng/ml



#14 Endrin

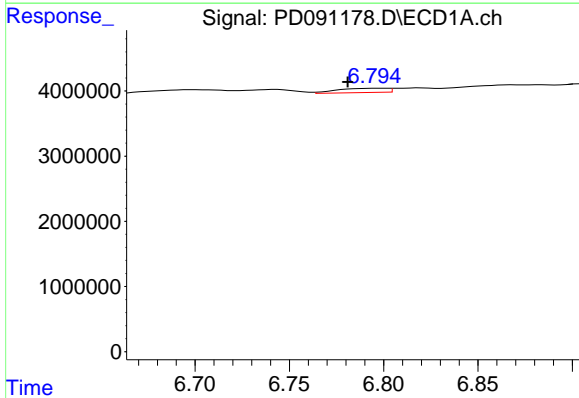
R.T.: 6.575 min
 Delta R.T.: 0.007 min
 Response: 6996145
 Conc: 1.41 ng/ml

Instrument :
 ECD_D
 ClientSampleId :
 I.BLK



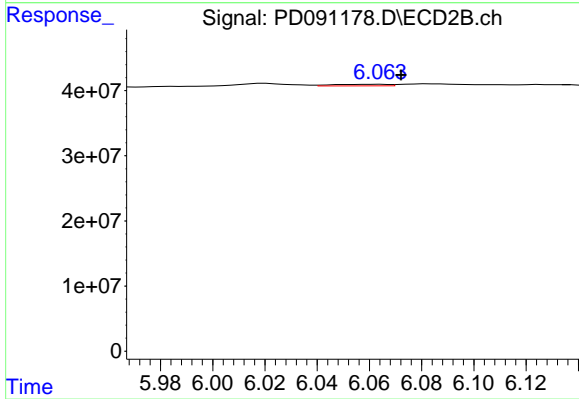
#14 Endrin

R.T.: 5.785 min
 Delta R.T.: 0.005 min
 Response: 99134193
 Conc: 2.45 ng/ml



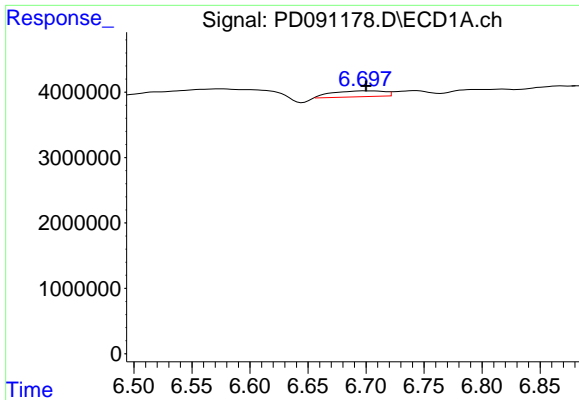
#15 Endosulfan II

R.T.: 6.797 min
 Delta R.T.: 0.016 min
 Response: 1189970
 Conc: 0.24 ng/ml



#15 Endosulfan II

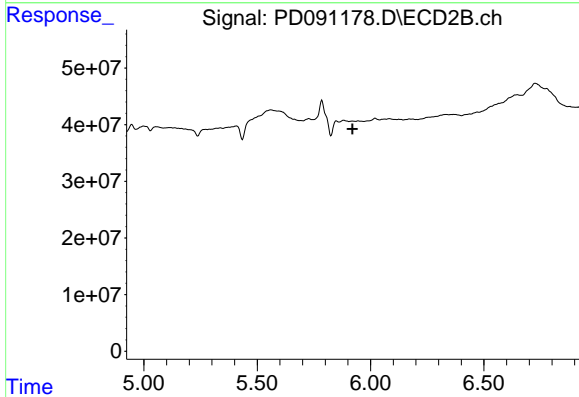
R.T.: 6.064 min
 Delta R.T.: -0.008 min
 Response: 3364822
 Conc: 0.09 ng/ml



#16 4,4'-DDD

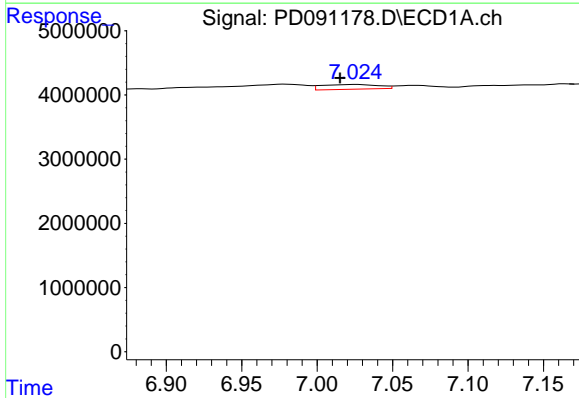
R.T.: 6.699 min
 Delta R.T.: -0.002 min
 Response: 2764155
 Conc: 0.68 ng/ml

Instrument :
 ECD_D
 ClientSampleId :
 I.BLK



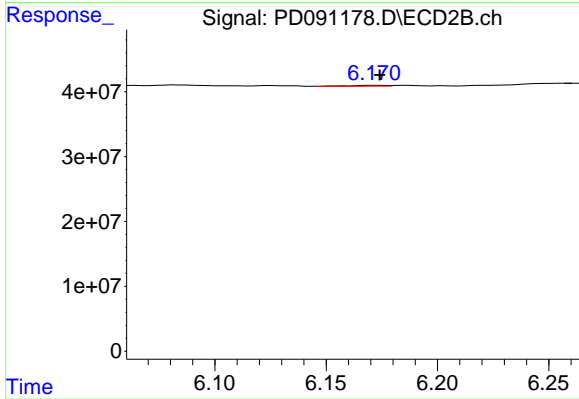
#16 4,4'-DDD

R.T.: 5.922 min
 Delta R.T.: 0.000 min
 Response: -1124161
 Conc: N.D.



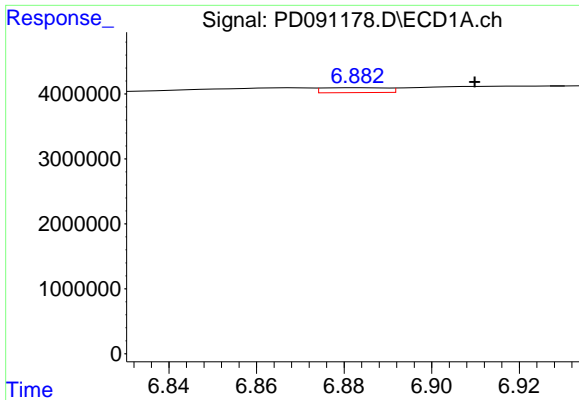
#17 4,4'-DDT

R.T.: 7.026 min
 Delta R.T.: 0.010 min
 Response: 1946129
 Conc: 0.47 ng/ml



#17 4,4'-DDT

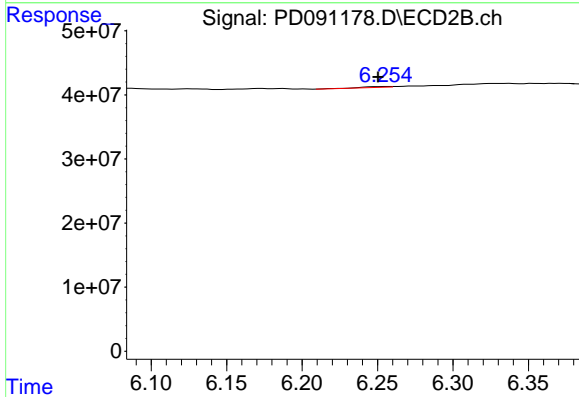
R.T.: 6.173 min
 Delta R.T.: -0.001 min
 Response: 1697252
 Conc: 0.05 ng/ml



#18 Endrin aldehyde

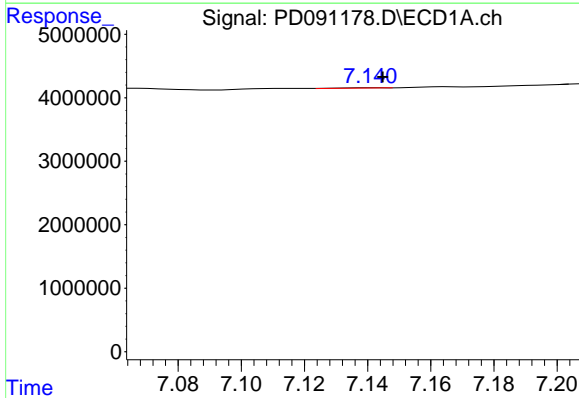
R.T.: 6.884 min
 Delta R.T.: -0.026 min
 Response: 778717
 Conc: 0.21 ng/ml

Instrument :
 ECD_D
 ClientSampleId :
 I.BLK



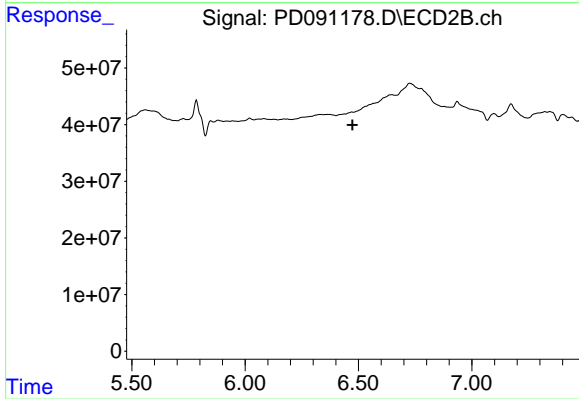
#18 Endrin aldehyde

R.T.: 6.256 min
 Delta R.T.: 0.006 min
 Response: 1544378
 Conc: 0.06 ng/ml



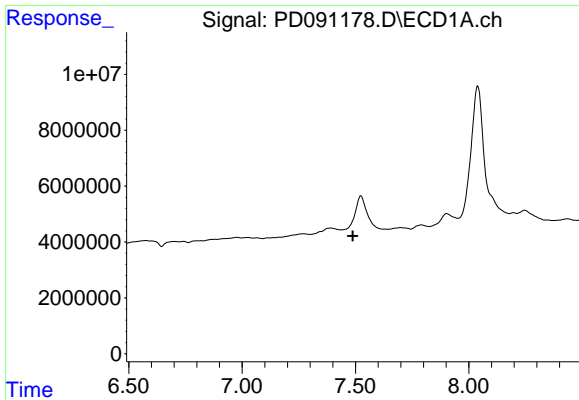
#19 Endosulfan Sulfate

R.T.: 7.141 min
 Delta R.T.: -0.004 min
 Response: 38948
 Conc: 0.01 ng/ml



#19 Endosulfan Sulfate

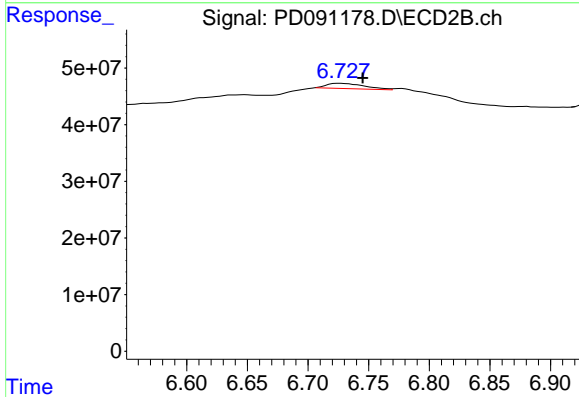
R.T.: 6.471 min
 Delta R.T.: -0.003 min
 Response: -5473034
 Conc: N.D.



#20 Methoxychlor

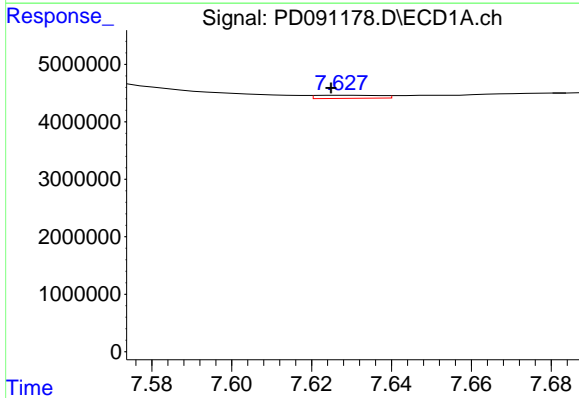
R.T.: 0.000 min
 Exp R.T.: 7.488 min
 Response: 0
 Conc: N.D.

Instrument :
 ECD_D
 ClientSampleId :
 I.BLK



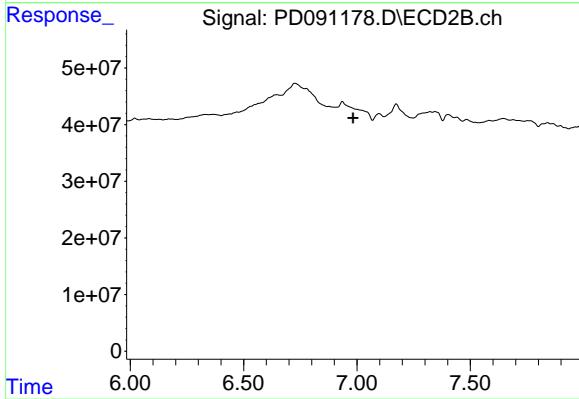
#20 Methoxychlor

R.T.: 6.726 min
 Delta R.T.: -0.019 min
 Response: 20177915
 Conc: 1.16 ng/ml



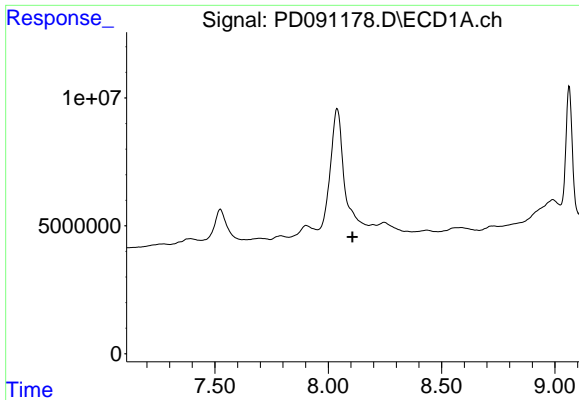
#21 Endrin ketone

R.T.: 7.628 min
 Delta R.T.: 0.003 min
 Response: 605497
 Conc: 0.12 ng/ml



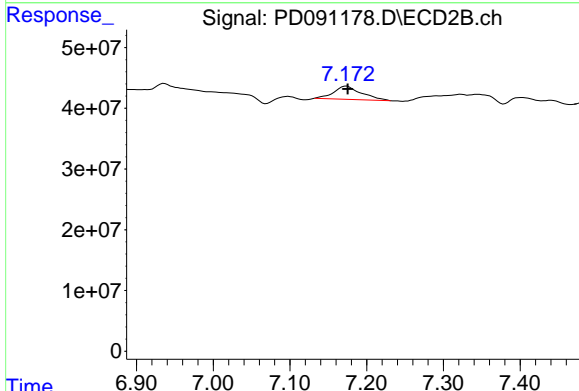
#21 Endrin ketone

R.T.: 0.000 min
 Exp R.T.: 6.983 min
 Response: 0
 Conc: N.D.

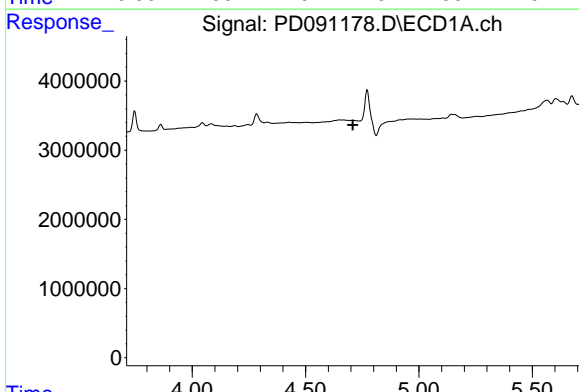


#22 Mirex
 R.T.: 0.000 min
 Exp R.T.: 8.107 min
 Response: 0
 Conc: N.D.

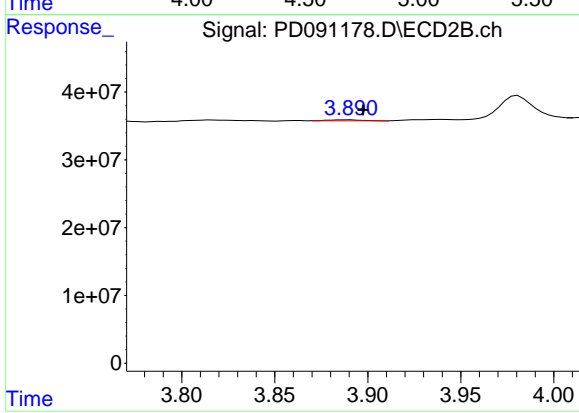
Instrument : ECD_D
 ClientSampleId : I.BLK



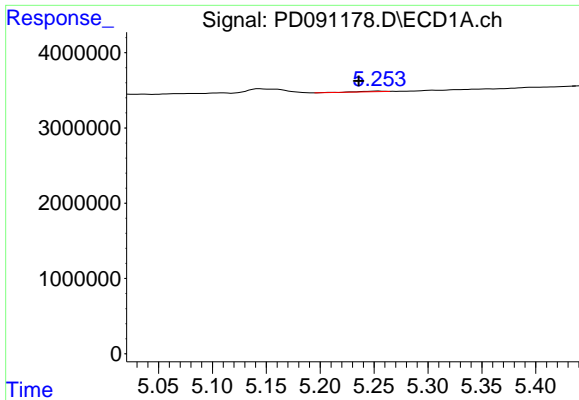
#22 Mirex
 R.T.: 7.173 min
 Delta R.T.: -0.002 min
 Response: 54548000
 Conc: 2.12 ng/ml



#23 Chlordane-1
 R.T.: 0.000 min
 Exp R.T.: 4.709 min
 Response: 0
 Conc: N.D.



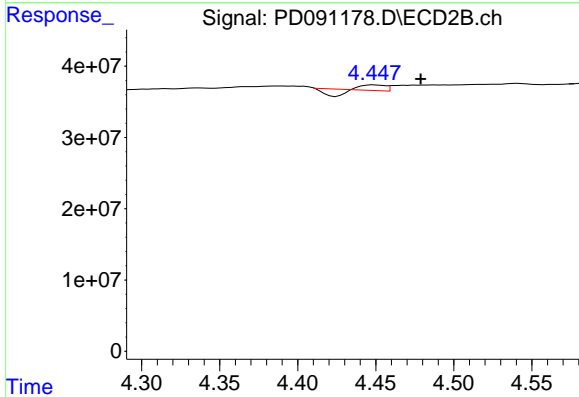
#23 Chlordane-1
 R.T.: 3.890 min
 Delta R.T.: -0.007 min
 Response: 1700816
 Conc: 1.36 ng/ml



#24 Chlordane-2

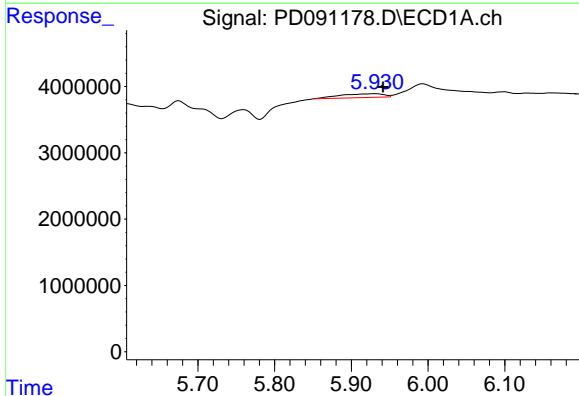
R.T.: 5.254 min
 Delta R.T.: 0.018 min
 Response: 128737
 Conc: 0.67 ng/ml

Instrument :
 ECD_D
 ClientSampleId :
 I.BLK



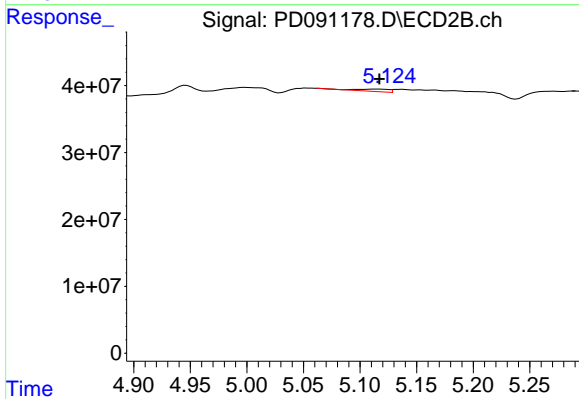
#24 Chlordane-2

R.T.: 4.449 min
 Delta R.T.: -0.030 min
 Response: 1071418
 Conc: 0.82 ng/ml



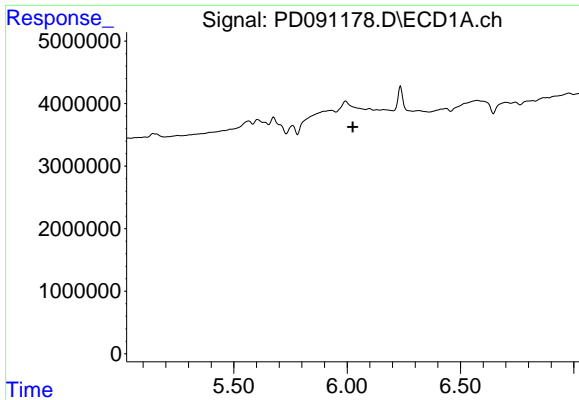
#25 Chlordane-3

R.T.: 5.932 min
 Delta R.T.: -0.010 min
 Response: 2269443
 Conc: 2.98 ng/ml



#25 Chlordane-3

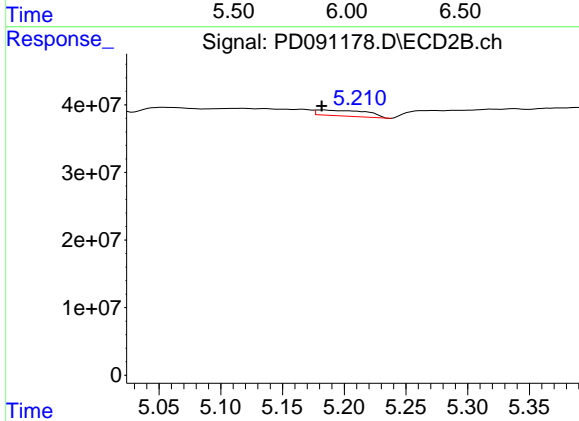
R.T.: 5.117 min
 Delta R.T.: 0.000 min
 Response: 6971125
 Conc: 1.79 ng/ml



#26 Chlordane-4

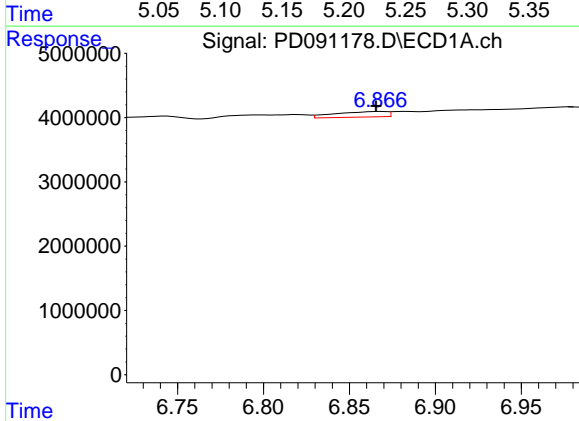
R.T.: 0.000 min
 Exp R.T.: 6.025 min
 Response: 0
 Conc: N.D.

Instrument :
 ECD_D
 ClientSampleId :
 I.BLK



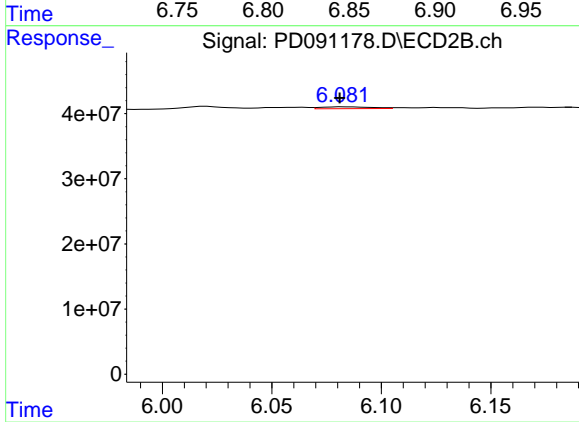
#26 Chlordane-4

R.T.: 5.183 min
 Delta R.T.: 0.002 min
 Response: 23957200
 Conc: 7.17 ng/ml



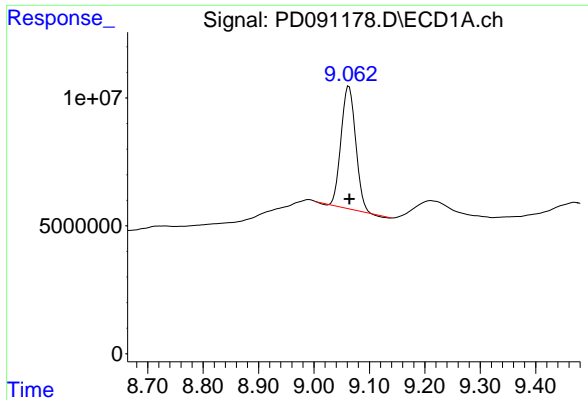
#27 Chlordane-5

R.T.: 6.868 min
 Delta R.T.: 0.002 min
 Response: 1767891
 Conc: 11.77 ng/ml



#27 Chlordane-5

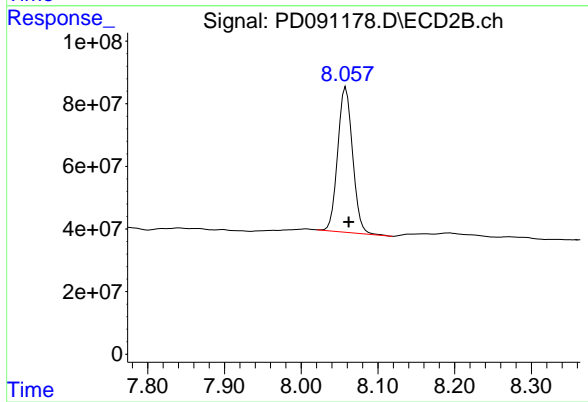
R.T.: 6.083 min
 Delta R.T.: 0.002 min
 Response: 4569618
 Conc: 3.10 ng/ml



#28 Decachlorobiphenyl

R.T.: 9.063 min
Delta R.T.: -0.001 min
Response: 87754204
Conc: 18.76 ng/ml

Instrument :
ECD_D
ClientSampleId :
I.BLK



#28 Decachlorobiphenyl

R.T.: 8.058 min
Delta R.T.: -0.004 min
Response: 623552486
Conc: 20.59 ng/ml