

Data Path : Z:\pestpcbsrv\HPCHEM1\ECD_D\Data\PD111425\
 Data File : PD091180.D
 Signal(s) : Signal #1: ECD1A.ch Signal #2: ECD2B.ch
 Acq On : 14 Nov 2025 15:14
 Operator : AR\AJ
 Sample : PB170554BL
 Misc :
 ALS Vial : 20 Sample Multiplier: 1

Instrument :
 ECD_D
 ClientSampleId :
 PB170554BL

Integration File signal 1: autoint1.e
 Integration File signal 2: autoint2.e
 Quant Time: Nov 15 01:09:42 2025
 Quant Method : Z:\pestpcbsrv\HPCHEM1\ECD_D\Method\PD101725.M
 Quant Title : GC Extractables
 QLast Update : Fri Oct 17 17:43:28 2025
 Response via : Initial Calibration
 Integrator: ChemStation

Volume Inj. : 1 µl
 Signal #1 Phase : ZB-MR2 Signal #2 Phase: ZB-MR2
 Signal #1 Info : 30M x 0.32mm x0.5 Signal #2 Info : 30M x 0.32mm x 0.25µm

	Compound	RT#1	RT#2	Resp#1	Resp#2	ng/ml	ng/ml

System Monitoring Compounds							
1)	SA Tetrachlo...	3.544	2.874	60267895	663.1E6	19.353	22.267
28)	SA Decachlor...	9.063	8.058	88631826	634.3E6	18.947	20.940
Target Compounds							
2)	A alpha-BHC	3.993	3.376	246761	4179141	0.034	0.082 #
3)	MA gamma-BHC...	4.328	3.719	215129	2497034	0.032	0.053 #
4)	MA Heptachlor	4.922	4.074	704867	2807425	0.126	0.063 #
5)	MB Aldrin	5.262	4.356	249800	2777364	0.038	0.060 #
6)	B beta-BHC	4.512	4.015	99054	2095073	0.038	0.106 #
7)	B delta-BHC	4.771	4.254	6102718	3918864	0.903	0.082 #
8)	Heptachlo...	5.678	4.863	277261	2639942	0.048	0.062 #
9)	A Endosulfan I	6.066	5.222f	534193	997298	0.096	0.025 #
10)	B gamma-Chl...	5.934	5.107	886531	2544041	0.149	0.057 #
11)	B alpha-Chl...	5.995f	5.176	2314867	2621518	0.375	0.061 #
12)	B 4,4'-DDE	0.000	5.368	0	2021840	N.D.	0.046 #
13)	MA Dieldrin	6.338	5.501	221889	2043552	0.038	0.046
14)	MA Endrin	6.570	5.785	431260	74328461	0.087	1.836 #
15)	B Endosulfa...	0.000	6.080	0	4782243	N.D.	0.127 #
16)	A 4,4'-DDD	6.699	5.917	1513890	1484912	0.373	0.041 #
17)	MA 4,4'-DDT	7.012	6.186	1556303	7578366	0.379	0.216 #
18)	B Endrin al...	6.912	6.248	9318631	13292349	2.544	0.480 #
19)	B Endosulfa...	7.141	6.469	55006	926290	0.012	0.026 #
20)	A Methoxychlor	7.461f	6.744	267566	1332717	0.126	0.076 #
21)	B Endrin ke...	0.000	6.975	0	956898	N.D.	0.025 #
22)	Mirex	0.000	7.178	0	786865	N.D.	0.031 #
23)	Chlordane-1	0.000	3.887	0	923305	N.D.	0.741 #
24)	Chlordane-2	5.262f	4.488	249800	2520082	1.293	1.932 #
25)	Chlordane-3	5.934	5.107	886531	2544041	1.162	0.654 #
26)	Chlordane-4	5.995f	5.176	2314867	2621518	2.389	0.785 #
27)	Chlordane-5	0.000	6.080	0	4782243	N.D.	3.240 #

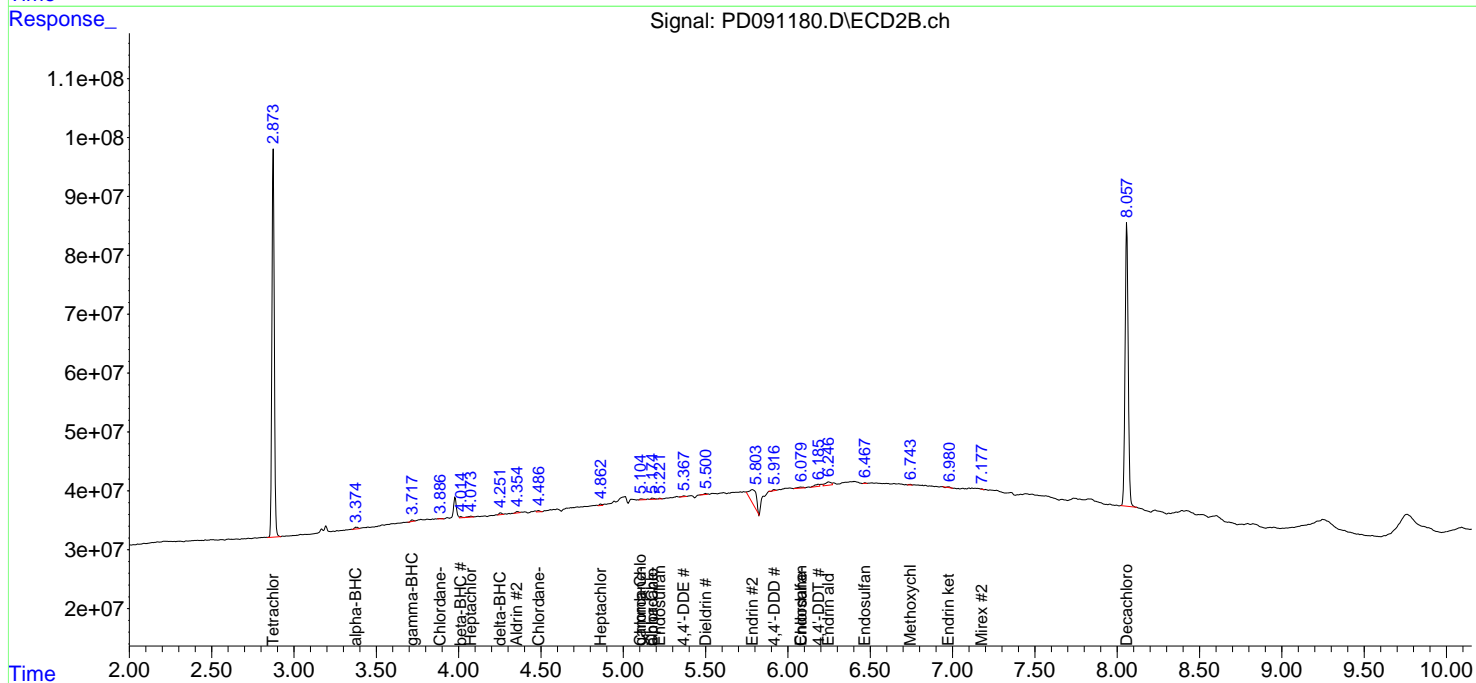
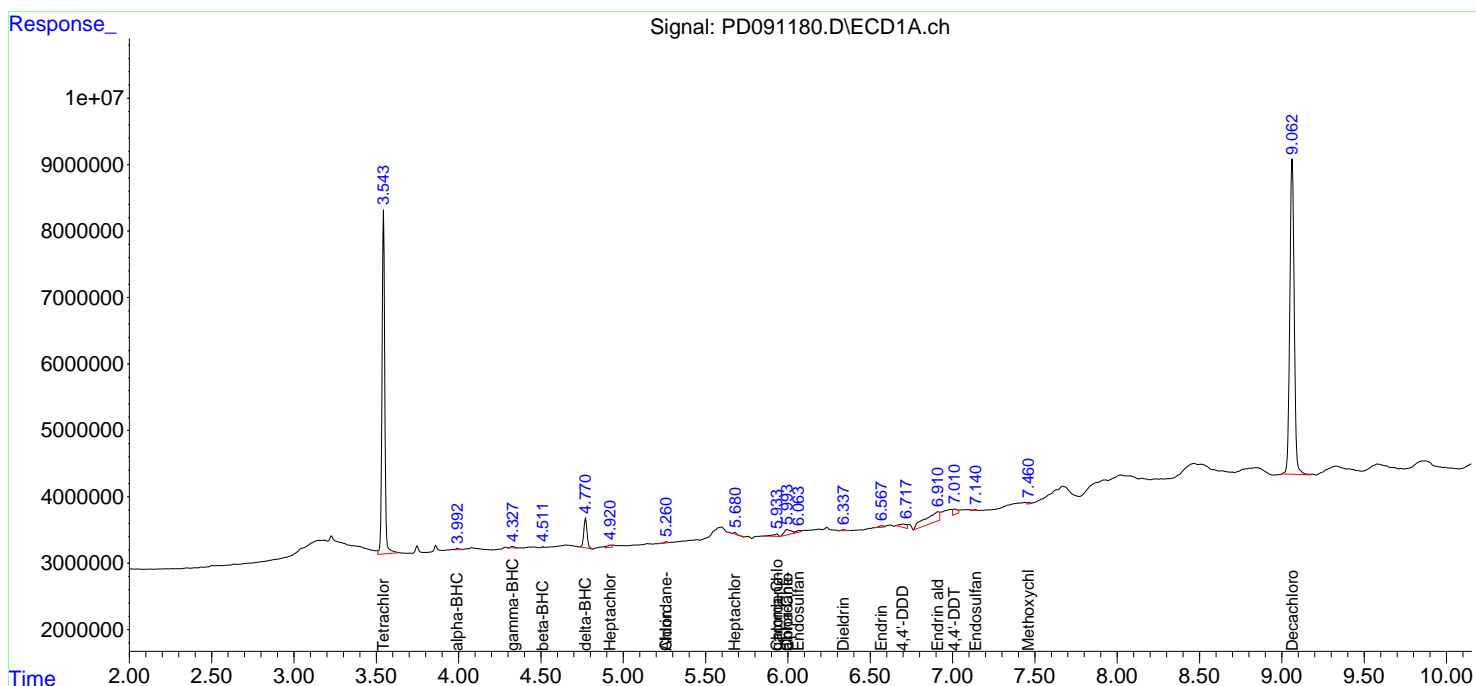
(f)=RT Delta > 1/2 Window (#)=Amounts differ by > 25% (m)=manual int.

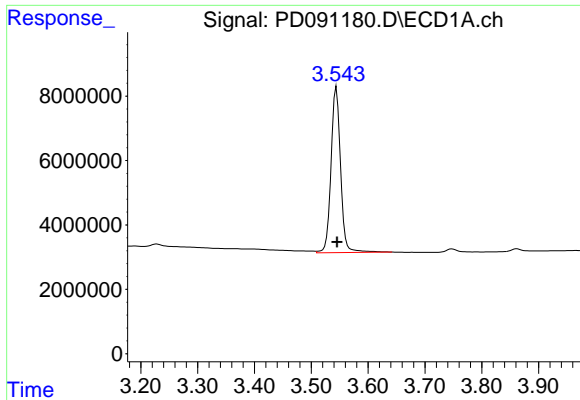
Data Path : Z:\pestpcbsrv\HPCHEM1\ECD_D\Data\PD111425\
 Data File : PD091180.D
 Signal(s) : Signal #1: ECD1A.ch Signal #2: ECD2B.ch
 Acq On : 14 Nov 2025 15:14
 Operator : AR\AJ
 Sample : PB170554BL
 Misc :
 ALS Vial : 20 Sample Multiplier: 1

Instrument :
 ECD_D
 ClientSampleId :
 PB170554BL

Integration File signal 1: autoint1.e
 Integration File signal 2: autoint2.e
 Quant Time: Nov 15 01:09:42 2025
 Quant Method : Z:\pestpcbsrv\HPCHEM1\ECD_D\Method\PD101725.M
 Quant Title : GC Extractables
 QLast Update : Fri Oct 17 17:43:28 2025
 Response via : Initial Calibration
 Integrator: ChemStation

Volume Inj. : 1 µl
 Signal #1 Phase : ZB-MR1 Signal #2 Phase: ZB-MR2
 Signal #1 Info : 30M x 0.32mm x0.5 Signal #2 Info : 30M x 0.32mm x 0.25µm

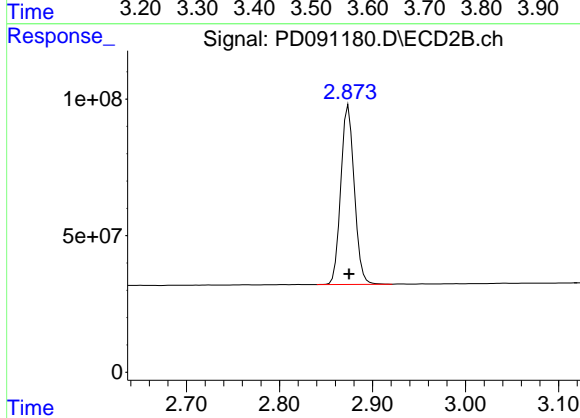




#1 Tetrachloro-m-xylene

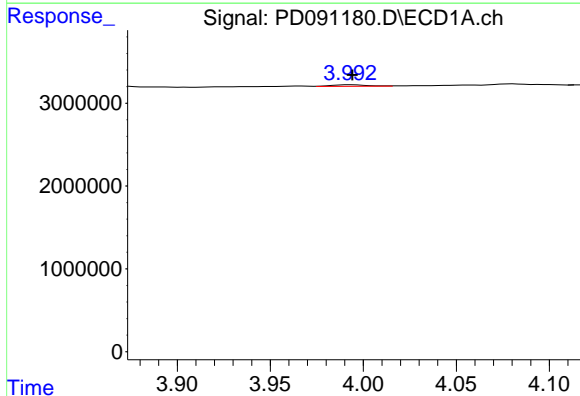
R.T.: 3.544 min
 Delta R.T.: 0.000 min
 Response: 60267895
 Conc: 19.35 ng/ml

Instrument :
 ECD_D
 ClientSampleId :
 PB170554BL



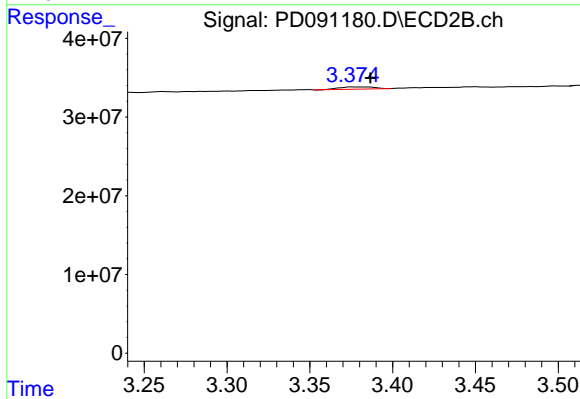
#1 Tetrachloro-m-xylene

R.T.: 2.874 min
 Delta R.T.: 0.000 min
 Response: 663052677
 Conc: 22.27 ng/ml



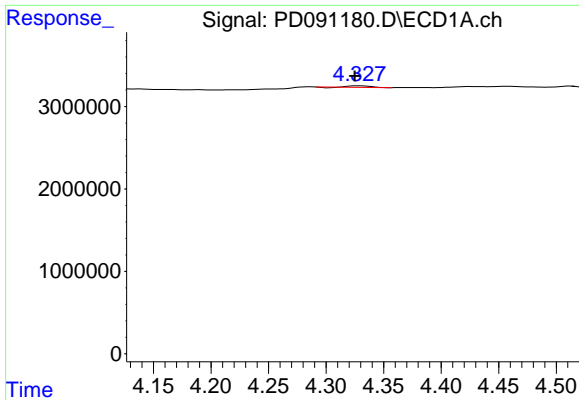
#2 alpha-BHC

R.T.: 3.993 min
 Delta R.T.: 0.000 min
 Response: 246761
 Conc: 0.03 ng/ml



#2 alpha-BHC

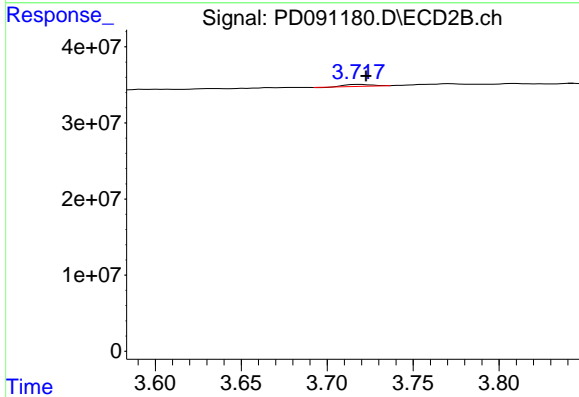
R.T.: 3.376 min
 Delta R.T.: -0.011 min
 Response: 4179141
 Conc: 0.08 ng/ml



#3 gamma-BHC (Lindane)

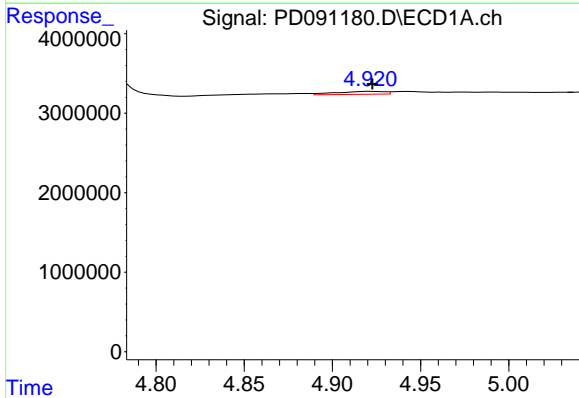
R.T.: 4.328 min
 Delta R.T.: 0.003 min
 Response: 215129
 Conc: 0.03 ng/ml

Instrument :
 ECD_D
 ClientSampleId :
 PB170554BL



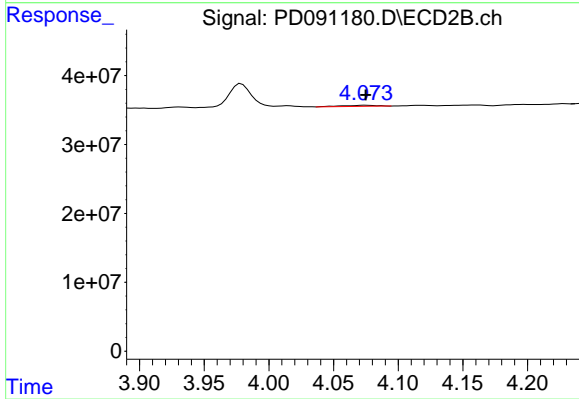
#3 gamma-BHC (Lindane)

R.T.: 3.719 min
 Delta R.T.: -0.004 min
 Response: 2497034
 Conc: 0.05 ng/ml



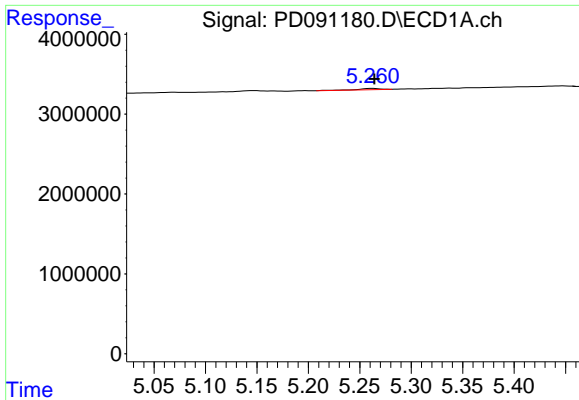
#4 Heptachlor

R.T.: 4.922 min
 Delta R.T.: 0.000 min
 Response: 704867
 Conc: 0.13 ng/ml



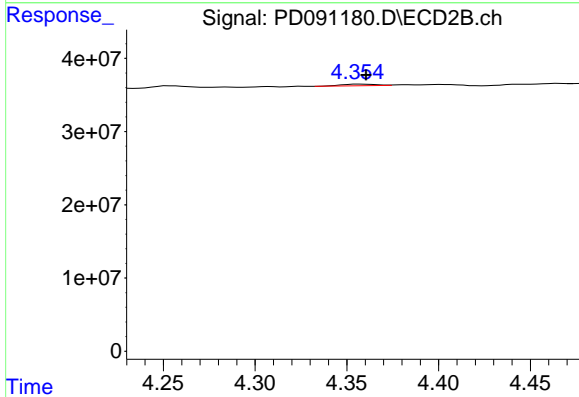
#4 Heptachlor

R.T.: 4.074 min
 Delta R.T.: 0.000 min
 Response: 2807425
 Conc: 0.06 ng/ml

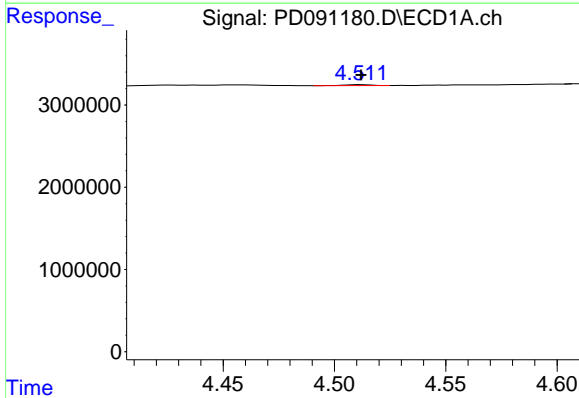


#5 Aldrin
 R.T.: 5.262 min
 Delta R.T.: -0.002 min
 Response: 249800
 Conc: 0.04 ng/ml

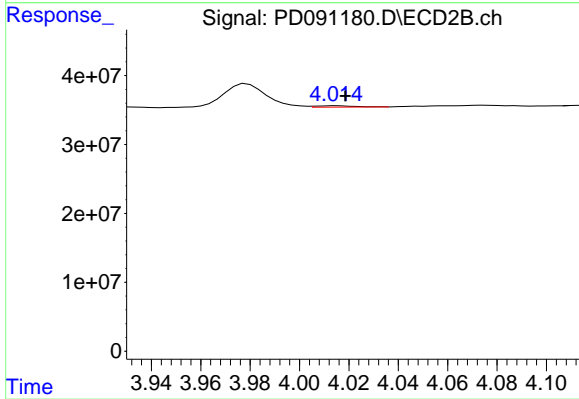
Instrument :
 ECD_D
 ClientSampleId :
 PB170554BL



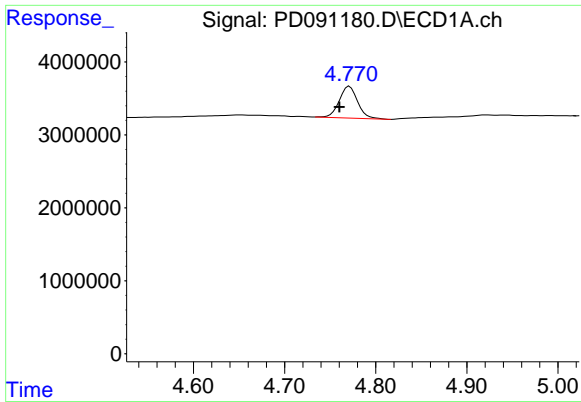
#5 Aldrin
 R.T.: 4.356 min
 Delta R.T.: -0.005 min
 Response: 2777364
 Conc: 0.06 ng/ml



#6 beta-BHC
 R.T.: 4.512 min
 Delta R.T.: 0.000 min
 Response: 99054
 Conc: 0.04 ng/ml



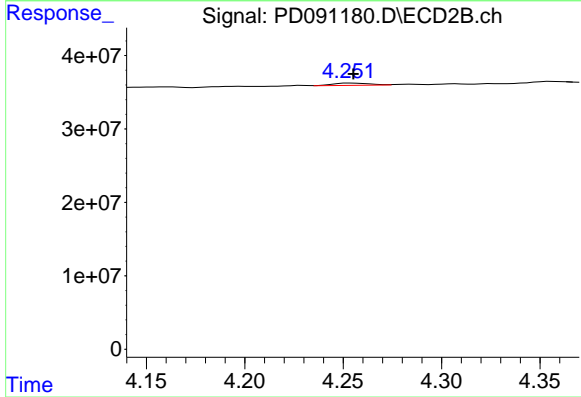
#6 beta-BHC
 R.T.: 4.015 min
 Delta R.T.: -0.003 min
 Response: 2095073
 Conc: 0.11 ng/ml



#7 delta-BHC

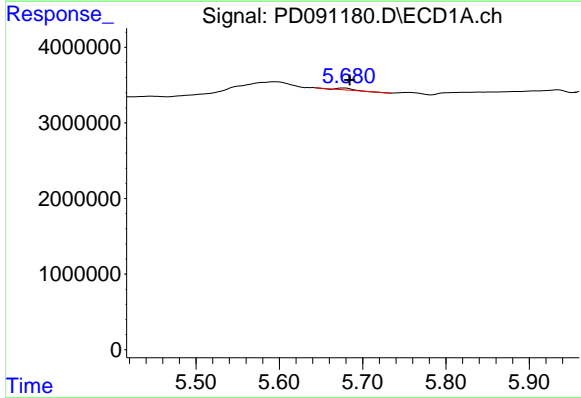
R.T.: 4.771 min
 Delta R.T.: 0.011 min
 Response: 6102718
 Conc: 0.90 ng/ml

Instrument :
 ECD_D
 ClientSampleId :
 PB170554BL



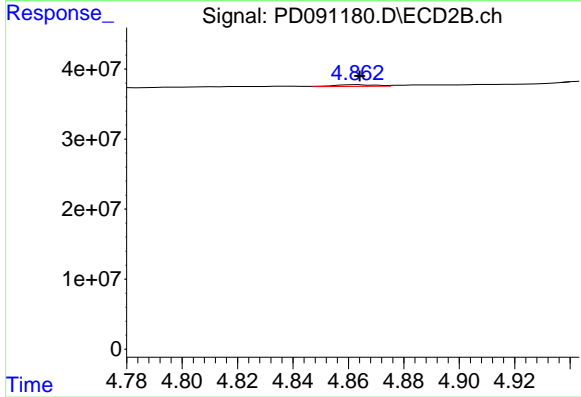
#7 delta-BHC

R.T.: 4.254 min
 Delta R.T.: -0.002 min
 Response: 3918864
 Conc: 0.08 ng/ml



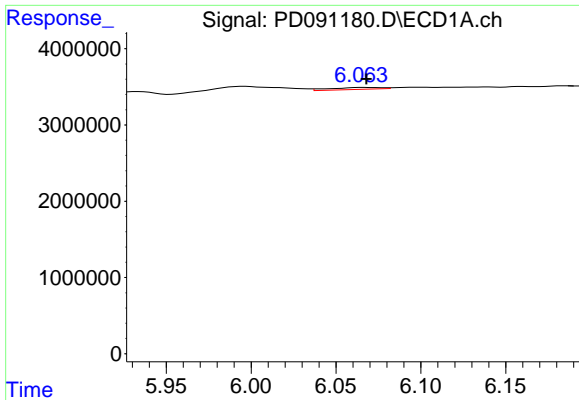
#8 Heptachlor epoxide

R.T.: 5.678 min
 Delta R.T.: -0.007 min
 Response: 277261
 Conc: 0.05 ng/ml



#8 Heptachlor epoxide

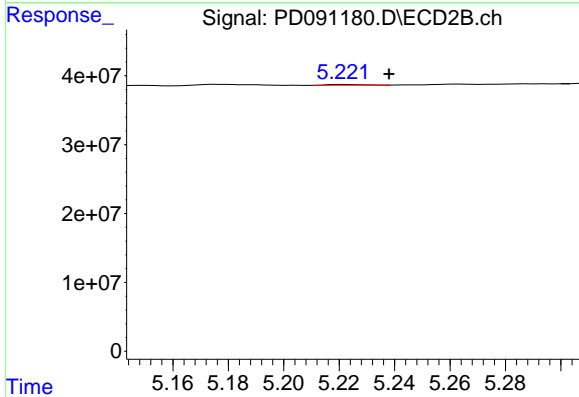
R.T.: 4.863 min
 Delta R.T.: 0.000 min
 Response: 2639942
 Conc: 0.06 ng/ml



#9 Endosulfan I

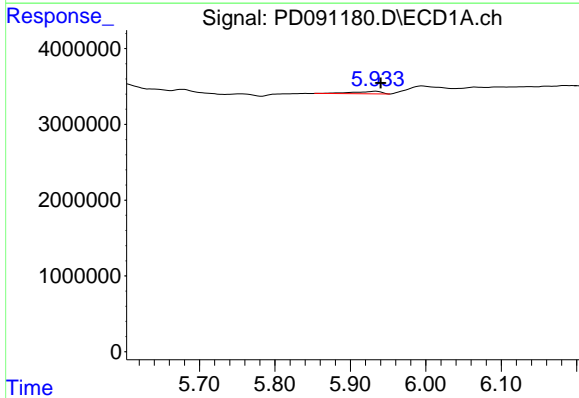
R.T.: 6.066 min
 Delta R.T.: -0.002 min
 Response: 534193
 Conc: 0.10 ng/ml

Instrument :
 ECD_D
 ClientSampleId :
 PB170554BL



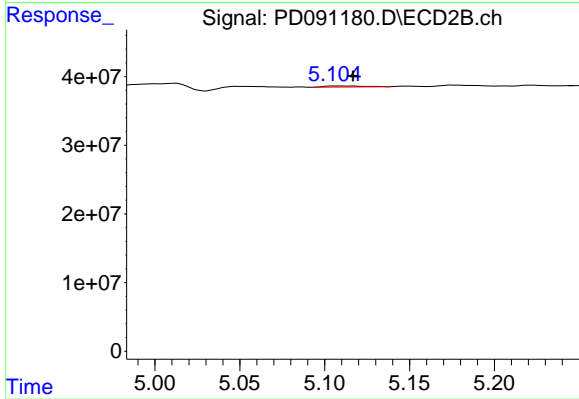
#9 Endosulfan I

R.T.: 5.222 min
 Delta R.T.: -0.016 min
 Response: 997298
 Conc: 0.03 ng/ml



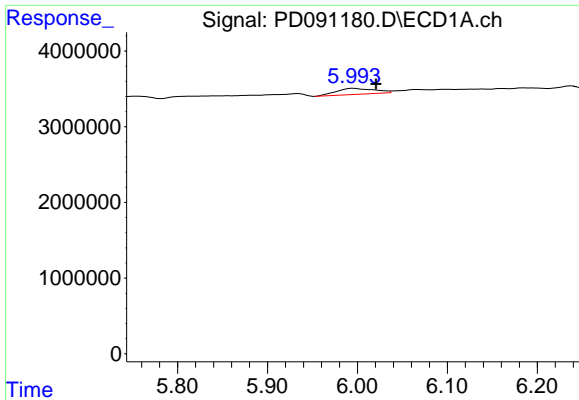
#10 gamma-Chlordane

R.T.: 5.934 min
 Delta R.T.: -0.006 min
 Response: 886531
 Conc: 0.15 ng/ml



#10 gamma-Chlordane

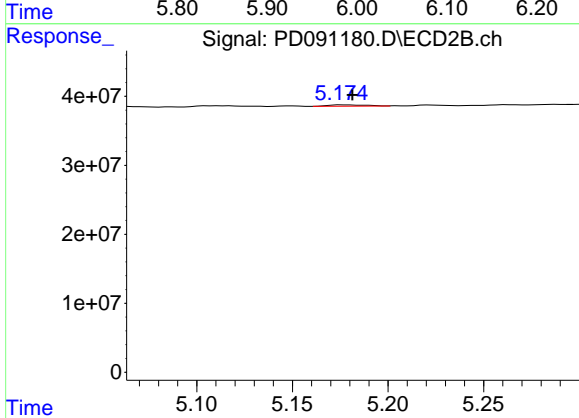
R.T.: 5.107 min
 Delta R.T.: -0.010 min
 Response: 2544041
 Conc: 0.06 ng/ml



#11 alpha-Chlordane

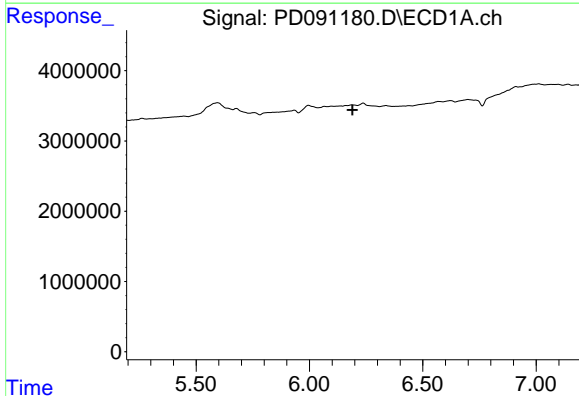
R.T.: 5.995 min
 Delta R.T.: -0.025 min
 Response: 2314867
 Conc: 0.37 ng/ml

Instrument :
 ECD_D
 ClientSampleId :
 PB170554BL



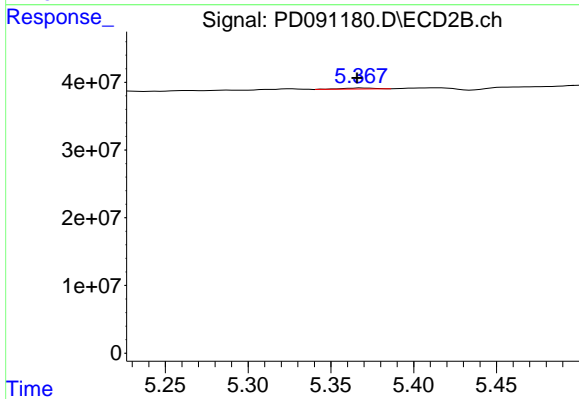
#11 alpha-Chlordane

R.T.: 5.176 min
 Delta R.T.: -0.005 min
 Response: 2621518
 Conc: 0.06 ng/ml



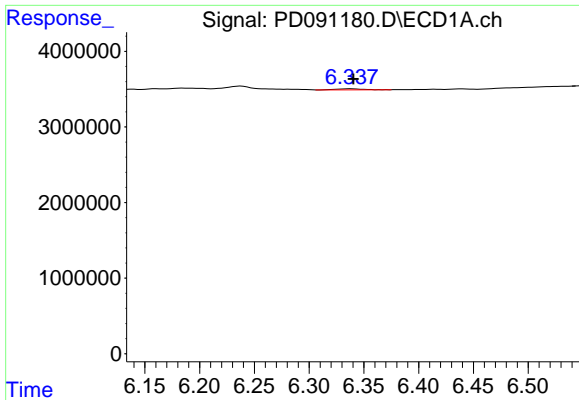
#12 4,4'-DDE

R.T.: 0.000 min
 Exp R.T. : 6.190 min
 Response: 0
 Conc: N.D.



#12 4,4'-DDE

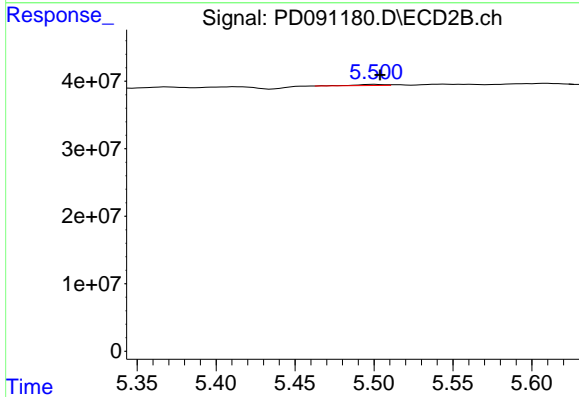
R.T.: 5.368 min
 Delta R.T.: 0.003 min
 Response: 2021840
 Conc: 0.05 ng/ml



#13 Dieldrin

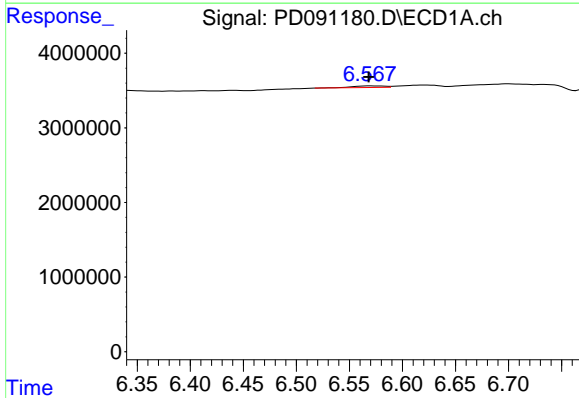
R.T.: 6.338 min
 Delta R.T.: -0.002 min
 Response: 221889
 Conc: 0.04 ng/ml

Instrument :
 ECD_D
 ClientSampleId :
 PB170554BL



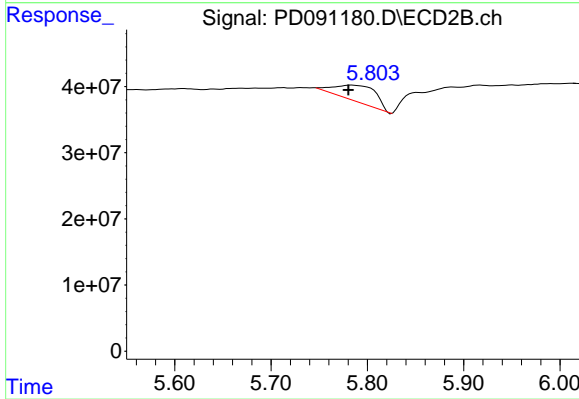
#13 Dieldrin

R.T.: 5.501 min
 Delta R.T.: -0.003 min
 Response: 2043552
 Conc: 0.05 ng/ml



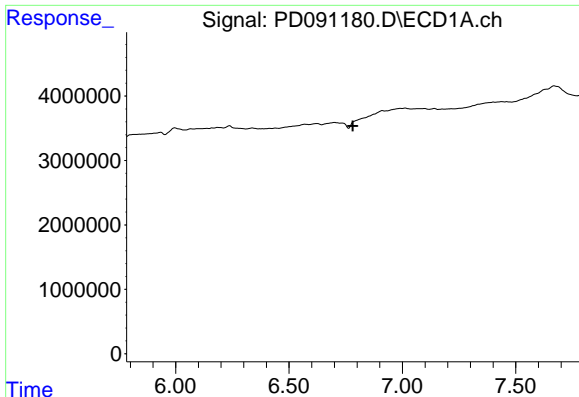
#14 Endrin

R.T.: 6.570 min
 Delta R.T.: 0.002 min
 Response: 431260
 Conc: 0.09 ng/ml



#14 Endrin

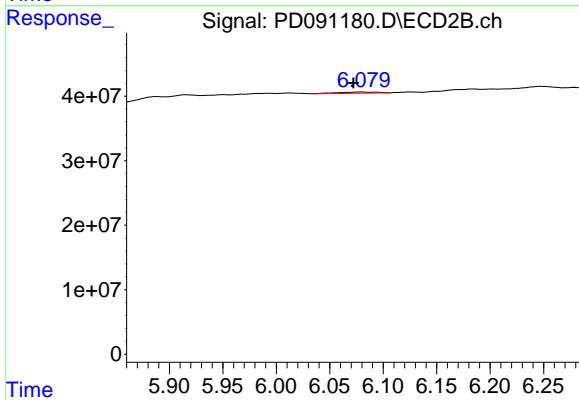
R.T.: 5.785 min
 Delta R.T.: 0.004 min
 Response: 74328461
 Conc: 1.84 ng/ml



#15 Endosulfan II

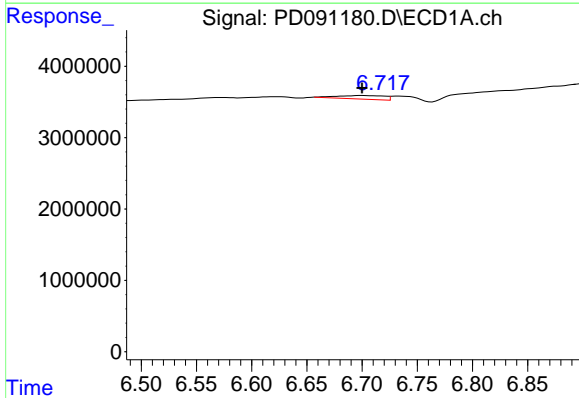
R.T.: 0.000 min
 Exp R.T.: 6.781 min
 Response: 0
 Conc: N.D.

Instrument :
 ECD_D
 ClientSampleId :
 PB170554BL



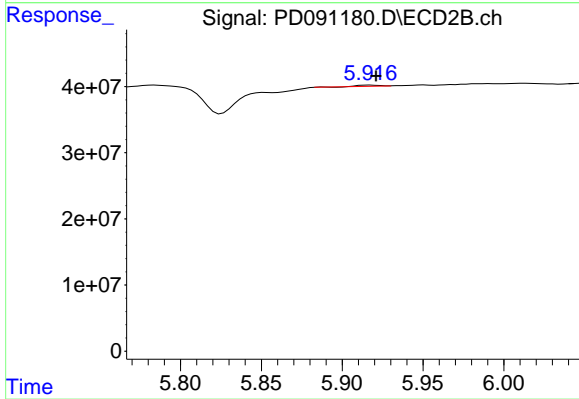
#15 Endosulfan II

R.T.: 6.080 min
 Delta R.T.: 0.008 min
 Response: 4782243
 Conc: 0.13 ng/ml



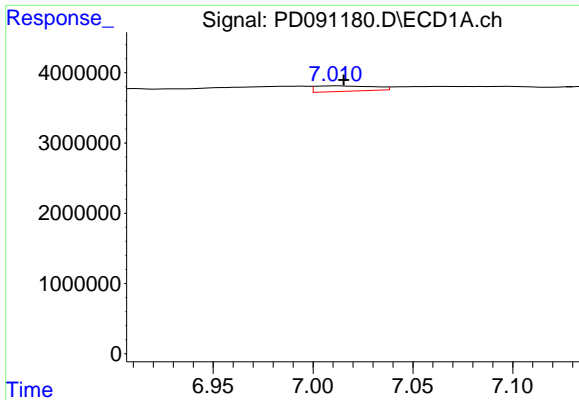
#16 4,4'-DDD

R.T.: 6.699 min
 Delta R.T.: -0.001 min
 Response: 1513890
 Conc: 0.37 ng/ml



#16 4,4'-DDD

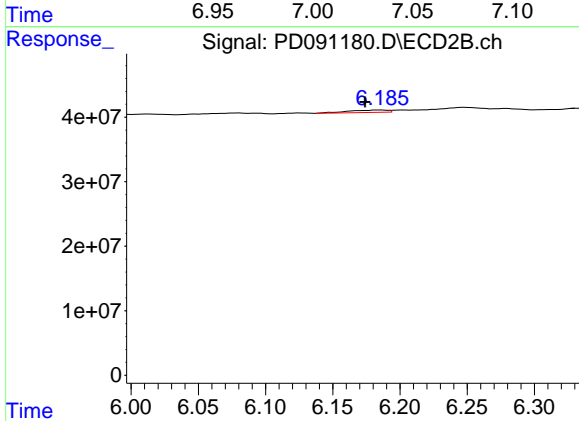
R.T.: 5.917 min
 Delta R.T.: -0.004 min
 Response: 1484912
 Conc: 0.04 ng/ml



#17 4,4'-DDT

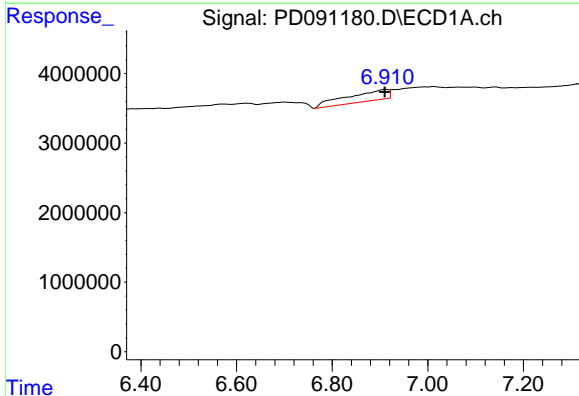
R.T.: 7.012 min
 Delta R.T.: -0.003 min
 Response: 1556303
 Conc: 0.38 ng/ml

Instrument :
 ECD_D
 ClientSampleId :
 PB170554BL



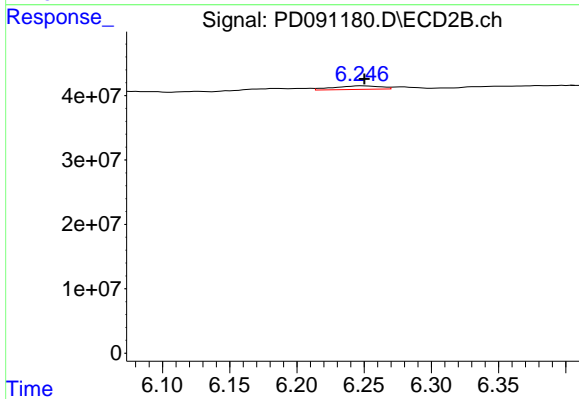
#17 4,4'-DDT

R.T.: 6.186 min
 Delta R.T.: 0.012 min
 Response: 7578366
 Conc: 0.22 ng/ml



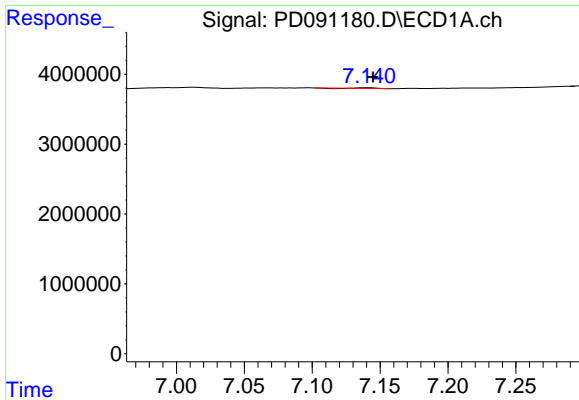
#18 Endrin aldehyde

R.T.: 6.912 min
 Delta R.T.: 0.002 min
 Response: 9318631
 Conc: 2.54 ng/ml



#18 Endrin aldehyde

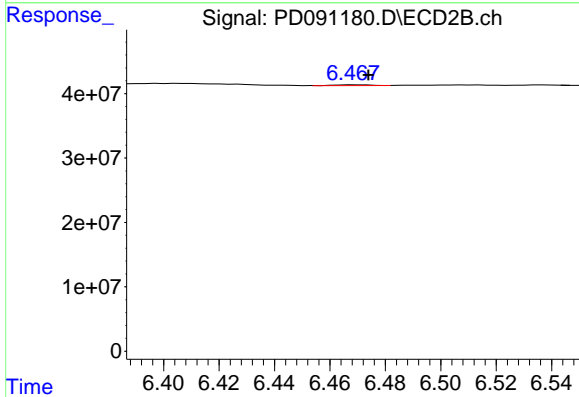
R.T.: 6.248 min
 Delta R.T.: -0.003 min
 Response: 13292349
 Conc: 0.48 ng/ml



#19 Endosulfan Sulfate

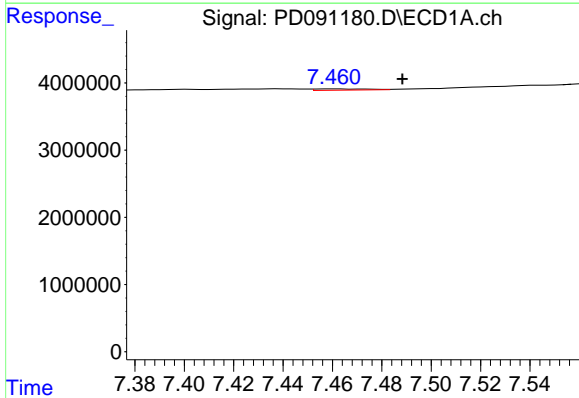
R.T.: 7.141 min
 Delta R.T.: -0.004 min
 Response: 55006
 Conc: 0.01 ng/ml

Instrument :
 ECD_D
 ClientSampleId :
 PB170554BL



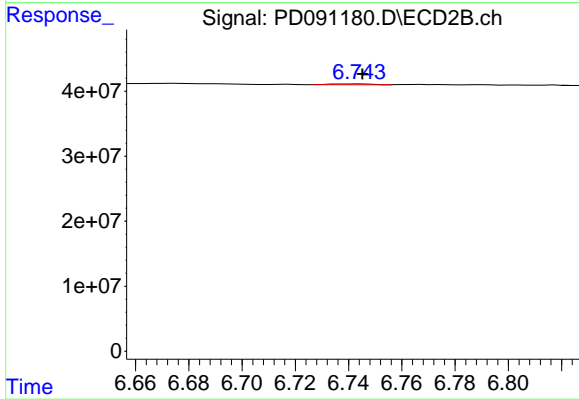
#19 Endosulfan Sulfate

R.T.: 6.469 min
 Delta R.T.: -0.005 min
 Response: 926290
 Conc: 0.03 ng/ml



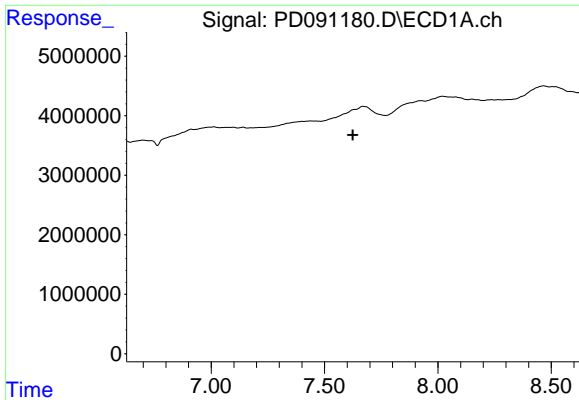
#20 Methoxychlor

R.T.: 7.461 min
 Delta R.T.: -0.027 min
 Response: 267566
 Conc: 0.13 ng/ml



#20 Methoxychlor

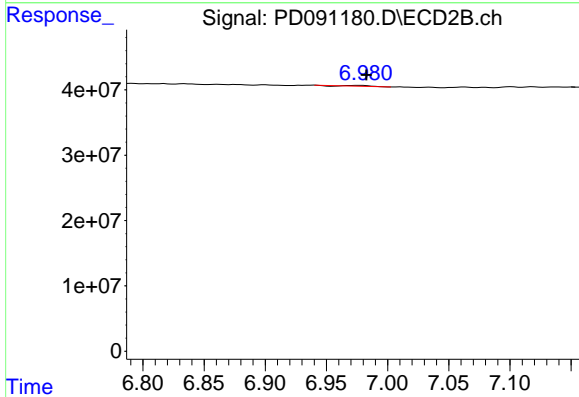
R.T.: 6.744 min
 Delta R.T.: 0.000 min
 Response: 1332717
 Conc: 0.08 ng/ml



#21 Endrin ketone

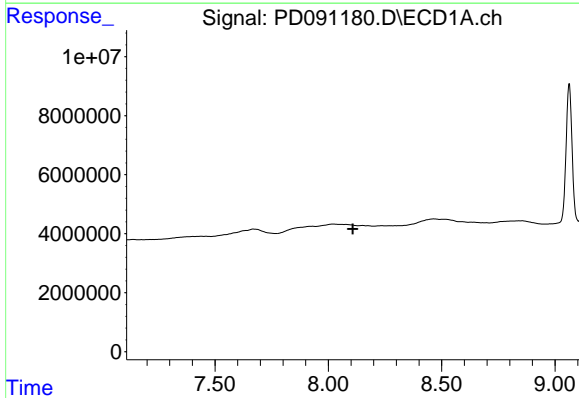
R.T.: 0.000 min
 Exp R.T.: 7.625 min
 Response: 0
 Conc: N.D.

Instrument :
 ECD_D
 ClientSampleId :
 PB170554BL



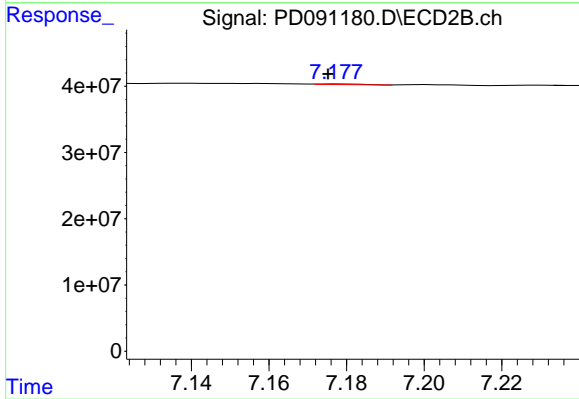
#21 Endrin ketone

R.T.: 6.975 min
 Delta R.T.: -0.008 min
 Response: 956898
 Conc: 0.03 ng/ml



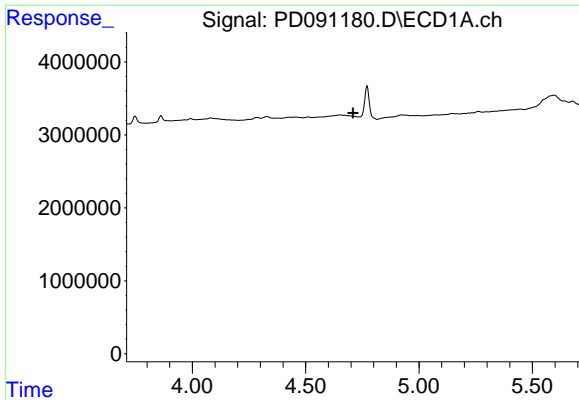
#22 Mirex

R.T.: 0.000 min
 Exp R.T.: 8.107 min
 Response: 0
 Conc: N.D.



#22 Mirex

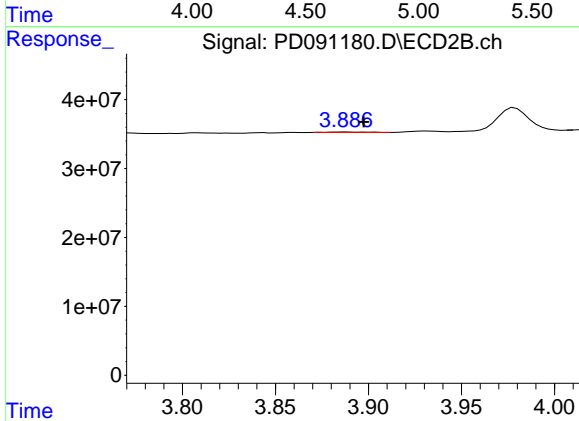
R.T.: 7.178 min
 Delta R.T.: 0.002 min
 Response: 786865
 Conc: 0.03 ng/ml



#23 Chlordane-1

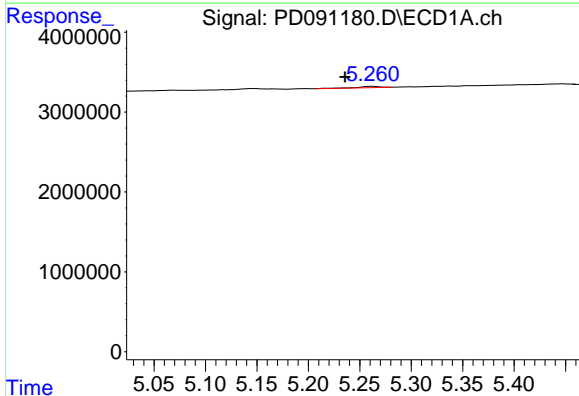
R.T.: 0.000 min
 Exp R.T.: 4.709 min
 Response: 0
 Conc: N.D.

Instrument :
 ECD_D
 ClientSampleId :
 PB170554BL



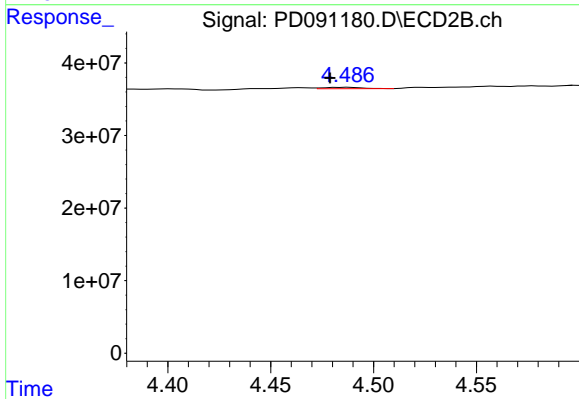
#23 Chlordane-1

R.T.: 3.887 min
 Delta R.T.: -0.010 min
 Response: 923305
 Conc: 0.74 ng/ml



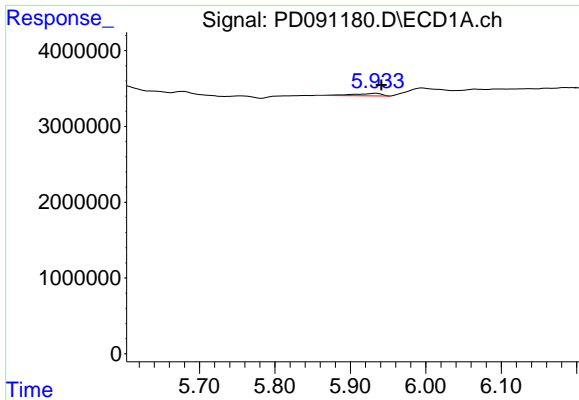
#24 Chlordane-2

R.T.: 5.262 min
 Delta R.T.: 0.026 min
 Response: 249800
 Conc: 1.29 ng/ml



#24 Chlordane-2

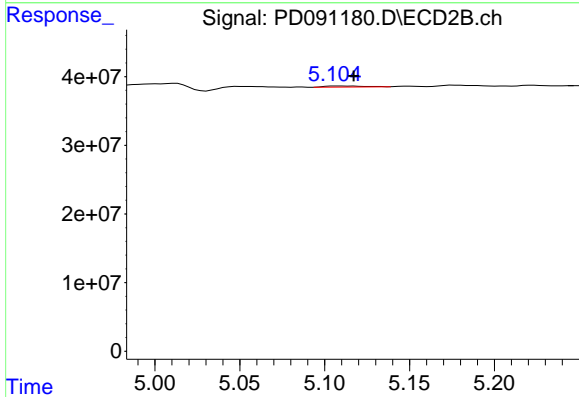
R.T.: 4.488 min
 Delta R.T.: 0.009 min
 Response: 2520082
 Conc: 1.93 ng/ml



#25 Chlordane-3

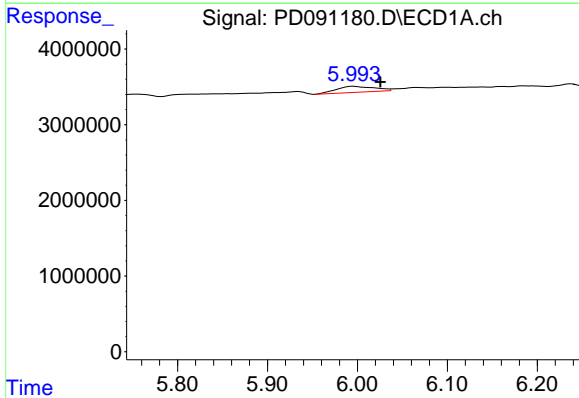
R.T.: 5.934 min
 Delta R.T.: -0.007 min
 Response: 886531
 Conc: 1.16 ng/ml

Instrument :
 ECD_D
 ClientSampleId :
 PB170554BL



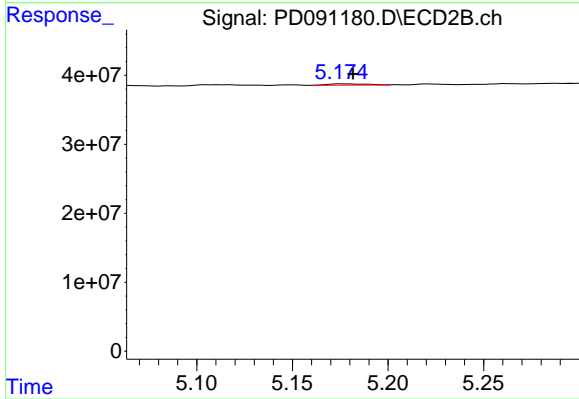
#25 Chlordane-3

R.T.: 5.107 min
 Delta R.T.: -0.010 min
 Response: 2544041
 Conc: 0.65 ng/ml



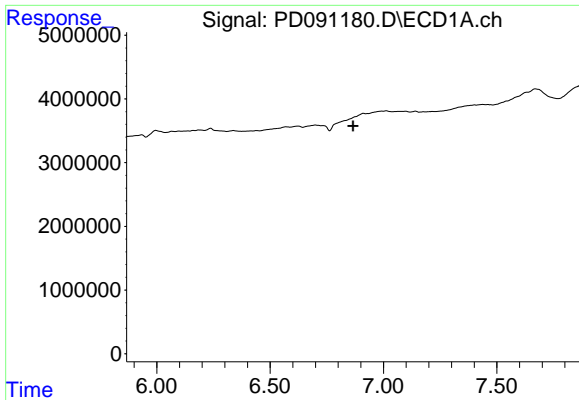
#26 Chlordane-4

R.T.: 5.995 min
 Delta R.T.: -0.030 min
 Response: 2314867
 Conc: 2.39 ng/ml



#26 Chlordane-4

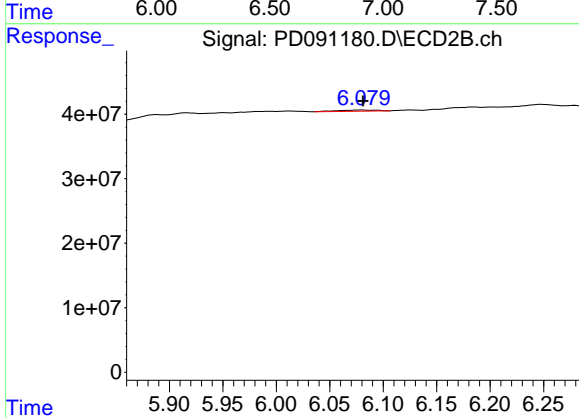
R.T.: 5.176 min
 Delta R.T.: -0.005 min
 Response: 2621518
 Conc: 0.78 ng/ml



#27 Chlordane-5

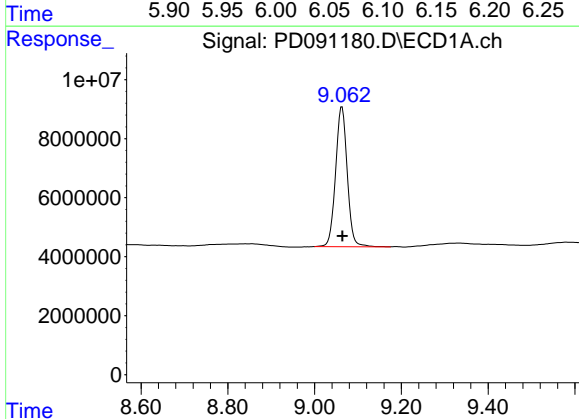
R.T.: 0.000 min
 Exp R.T.: 6.866 min
 Response: 0
 Conc: N.D.

Instrument :
 ECD_D
 ClientSampleId :
 PB170554BL



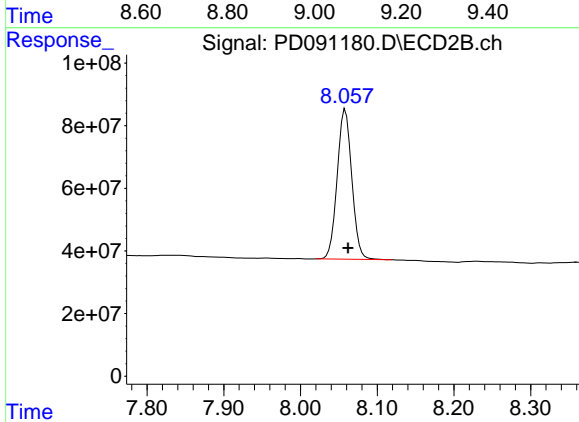
#27 Chlordane-5

R.T.: 6.080 min
 Delta R.T.: -0.001 min
 Response: 4782243
 Conc: 3.24 ng/ml



#28 Decachlorobiphenyl

R.T.: 9.063 min
 Delta R.T.: -0.001 min
 Response: 88631826
 Conc: 18.95 ng/ml



#28 Decachlorobiphenyl

R.T.: 8.058 min
 Delta R.T.: -0.003 min
 Response: 634306973
 Conc: 20.94 ng/ml