

Data Path : Z:\pestpcbsrv\HPCHEM1\ECD\_D\Data\PD111425\  
 Data File : PD091181.D  
 Signal(s) : Signal #1: ECD1A.ch Signal #2: ECD2B.ch  
 Acq On : 14 Nov 2025 15:28  
 Operator : AR\AJ  
 Sample : PB170554BS  
 Misc :  
 ALS Vial : 21 Sample Multiplier: 1

Instrument :  
 ECD\_D  
 ClientSampleId :  
 PB170554BS

Integration File signal 1: autoint1.e  
 Integration File signal 2: autoint2.e  
 Quant Time: Nov 15 01:09:51 2025  
 Quant Method : Z:\pestpcbsrv\HPCHEM1\ECD\_D\Method\PD101725.M  
 Quant Title : GC Extractables  
 QLast Update : Fri Oct 17 17:43:28 2025  
 Response via : Initial Calibration  
 Integrator: ChemStation

Volume Inj. : 1 µl  
 Signal #1 Phase : ZB-MR2 Signal #2 Phase: ZB-MR2  
 Signal #1 Info : 30M x 0.32mm x0.5 Signal #2 Info : 30M x 0.32mm x 0.25µm

Compound	RT#1	RT#2	Resp#1	Resp#2	ng/ml	ng/ml
-----						
System Monitoring Compounds						
1) SA Tetrachlo...	3.544	2.875	65635598	715.8E6	21.076	24.037
28) SA Decachlor...	9.064	8.059	96855214	703.6E6	20.705	23.227
Target Compounds						
2) A alpha-BHC	3.994	3.386	345.1E6	2747.9E6	48.085	53.780
3) MA gamma-BHC...	4.324	3.722	322.5E6	2524.5E6	47.430	53.430
4) MA Heptachlor	4.921	4.074	310.1E6	2424.0E6	55.478	54.346
5) MB Aldrin	5.263	4.359	308.8E6	2547.9E6	47.162	55.009
6) B beta-BHC	4.511	4.018	121.4E6	1020.1E6	46.342	51.441
7) B delta-BHC	4.760	4.254	325.9E6	2548.6E6	48.203	53.411
8) Heptachlo...	5.683	4.862	294.3E6	2183.2E6	50.831	51.202
9) A Endosulfan I	6.067	5.235	265.3E6	1234.6E6	47.916	31.343 #
10) B gamma-Chl...	5.939	5.114	272.4E6	2358.3E6	45.927	52.465
11) B alpha-Chl...	6.019	5.179	270.3E6	2236.7E6	43.741	51.850
12) B 4,4'-DDE	6.189	5.364	236.9E6	2535.7E6	44.475	57.843 #
13) MA Dieldrin	6.340	5.502	271.2E6	2326.7E6	46.514	52.659
14) MA Endrin	6.567	5.779	227.4E6	2136.9E6	45.909	52.770
15) B Endosulfa...	6.780	6.070	261.9E6	1928.3E6	52.376	51.346
16) A 4,4'-DDD	6.699	5.918	237.9E6	1899.0E6	58.678	52.116
17) MA 4,4'-DDT	7.014	6.171	190.3E6	1730.2E6	46.303	49.331
18) B Endrin al...	6.909	6.248	195.3E6	1491.6E6	53.328	53.861
19) B Endosulfa...	7.143	6.471	209.3E6	1836.9E6	45.134	51.245
20) A Methoxychlor	7.488	6.742	93158009	832.3E6	43.827	47.756
21) B Endrin ke...	7.624	6.980	233.3E6	1847.1E6	48.026	48.972
22) Mirex	8.106	7.172	140.4E6	1237.8E6	43.849	48.179
23) Chlordane-1	0.000	3.889	0	4627006	N.D.	3.713 #
24) Chlordane-2	5.263f	4.496	308.8E6	454.6E6	1598.825	348.459 #
25) Chlordane-3	5.939	5.114	272.4E6	2358.3E6	357.127	605.992 #
26) Chlordane-4	6.019	5.179	270.3E6	2236.7E6	279.013	669.420 #
27) Chlordane-5	0.000	6.070	0	1928.3E6	N.D.	1306.427 #

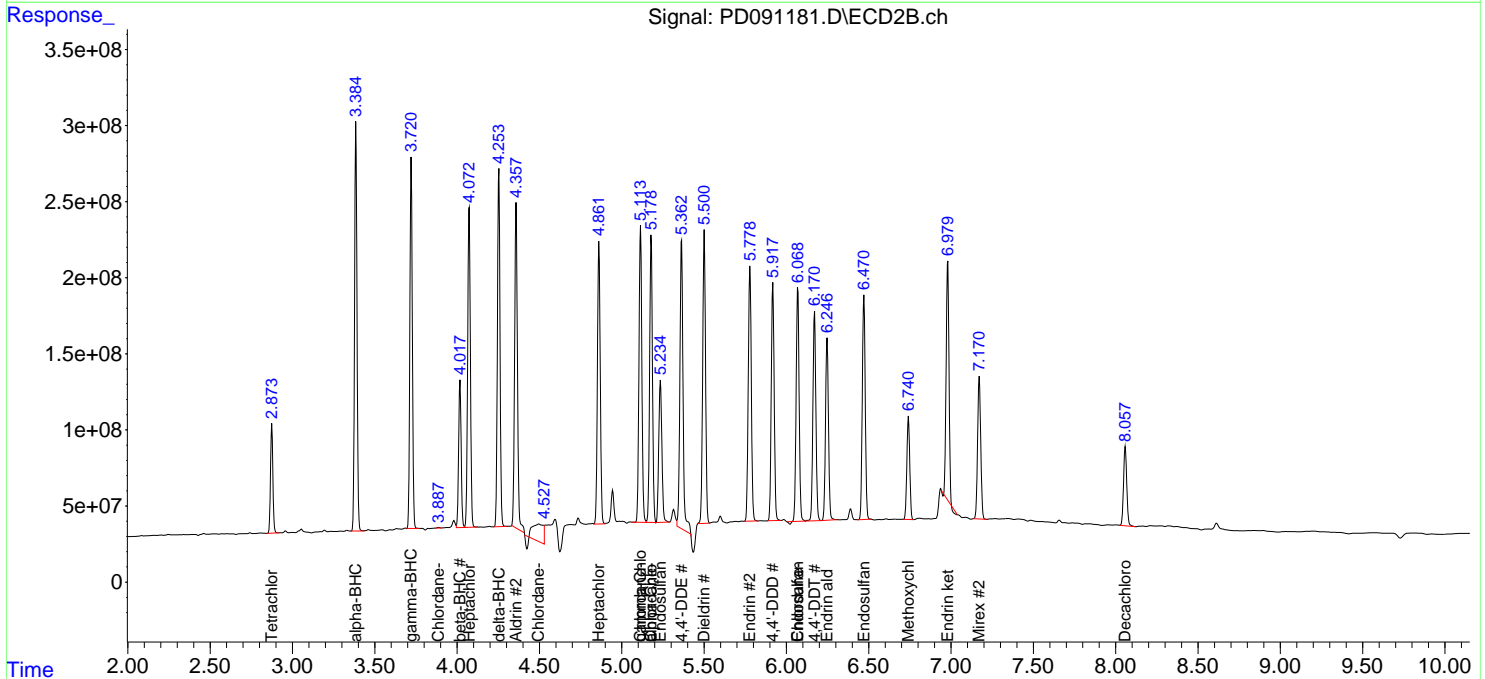
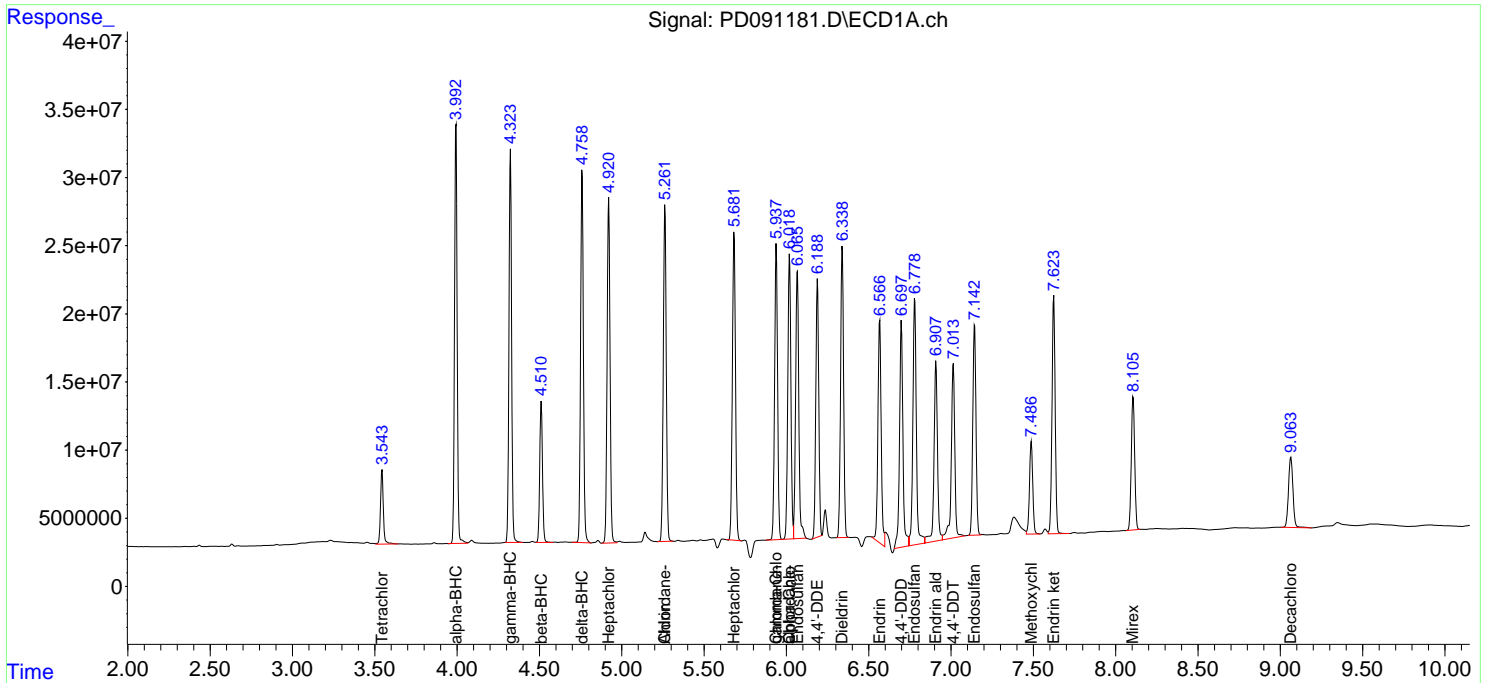
(f)=RT Delta > 1/2 Window (#)=Amounts differ by > 25% (m)=manual int.

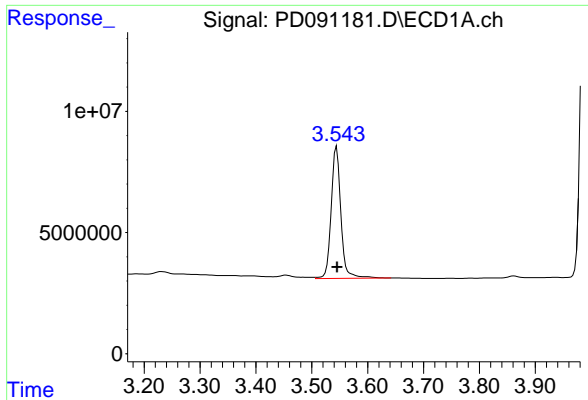
Data Path : Z:\pestpcbsrv\HPCHEM1\ECD\_D\Data\PD111425\  
 Data File : PD091181.D  
 Signal(s) : Signal #1: ECD1A.ch Signal #2: ECD2B.ch  
 Acq On : 14 Nov 2025 15:28  
 Operator : AR\AJ  
 Sample : PB170554BS  
 Misc :  
 ALS Vial : 21 Sample Multiplier: 1

Instrument :  
 ECD\_D  
 ClientSampleId :  
 PB170554BS

Integration File signal 1: autoint1.e  
 Integration File signal 2: autoint2.e  
 Quant Time: Nov 15 01:09:51 2025  
 Quant Method : Z:\pestpcbsrv\HPCHEM1\ECD\_D\Method\PD101725.M  
 Quant Title : GC Extractables  
 QLast Update : Fri Oct 17 17:43:28 2025  
 Response via : Initial Calibration  
 Integrator: ChemStation

Volume Inj. : 1 µl  
 Signal #1 Phase : ZB-MR1 Signal #2 Phase: ZB-MR2  
 Signal #1 Info : 30M x 0.32mm x0.5 Signal #2 Info : 30M x 0.32mm x 0.25µm

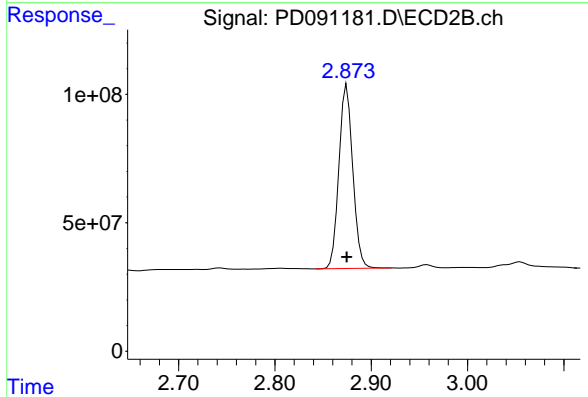




#1 Tetrachloro-m-xylene

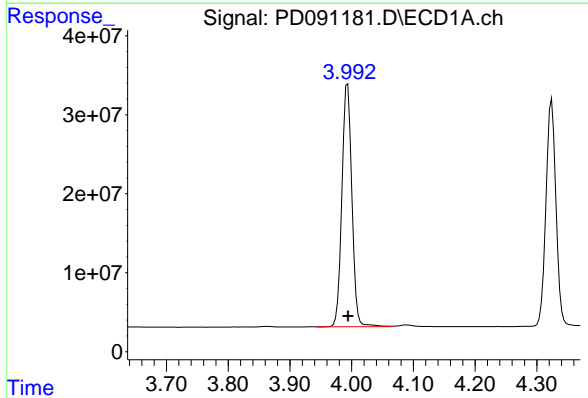
R.T.: 3.544 min  
 Delta R.T.: 0.000 min  
 Response: 65635598  
 Conc: 21.08 ng/ml

Instrument :  
 ECD\_D  
 ClientSampleId :  
 PB170554BS



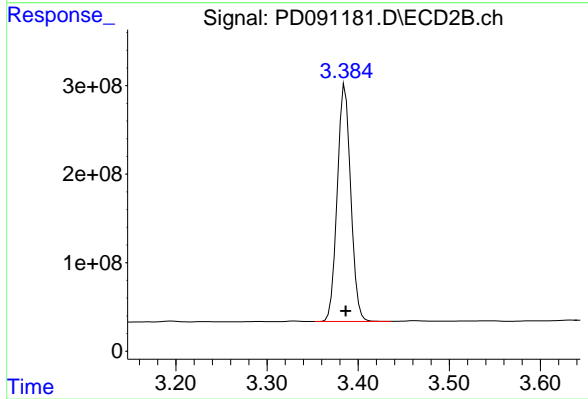
#1 Tetrachloro-m-xylene

R.T.: 2.875 min  
 Delta R.T.: 0.000 min  
 Response: 715758783  
 Conc: 24.04 ng/ml



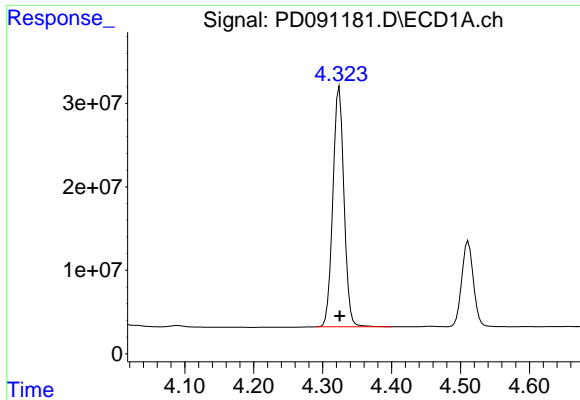
#2 alpha-BHC

R.T.: 3.994 min  
 Delta R.T.: 0.000 min  
 Response: 345111291  
 Conc: 48.08 ng/ml



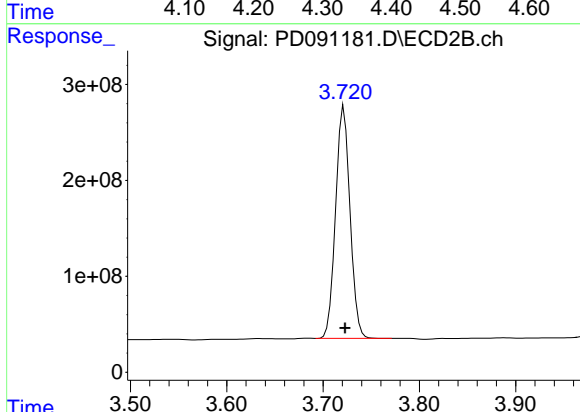
#2 alpha-BHC

R.T.: 3.386 min  
 Delta R.T.: 0.000 min  
 Response: 2747942699  
 Conc: 53.78 ng/ml

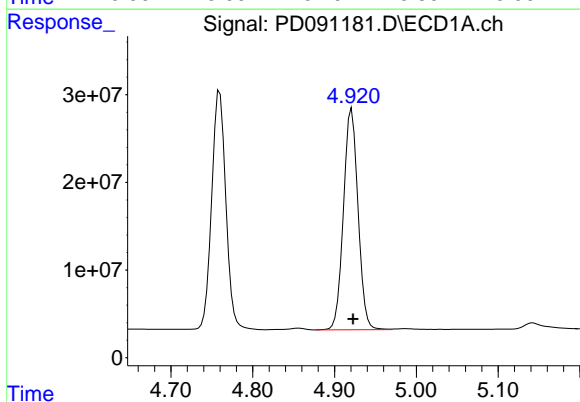


#3 gamma-BHC (Lindane)  
R.T.: 4.324 min  
Delta R.T.: 0.000 min  
Response: 322470327  
Conc: 47.43 ng/ml

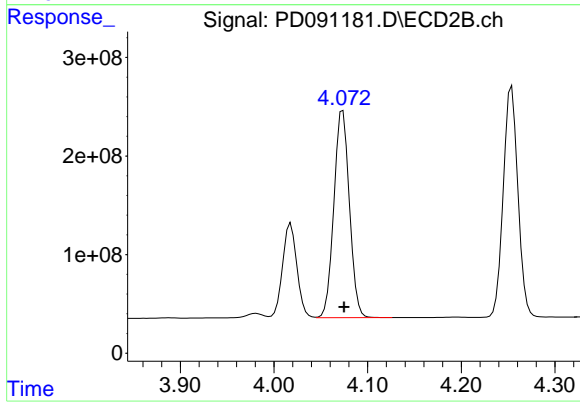
Instrument :  
ECD\_D  
ClientSampleId :  
PB170554BS



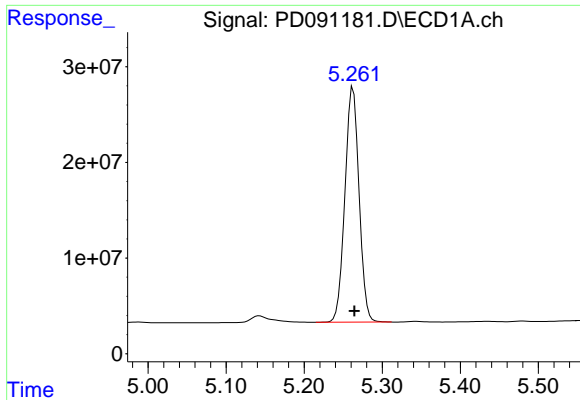
#3 gamma-BHC (Lindane)  
R.T.: 3.722 min  
Delta R.T.: 0.000 min  
Response: 2524503934  
Conc: 53.43 ng/ml



#4 Heptachlor  
R.T.: 4.921 min  
Delta R.T.: -0.002 min  
Response: 310094955  
Conc: 55.48 ng/ml



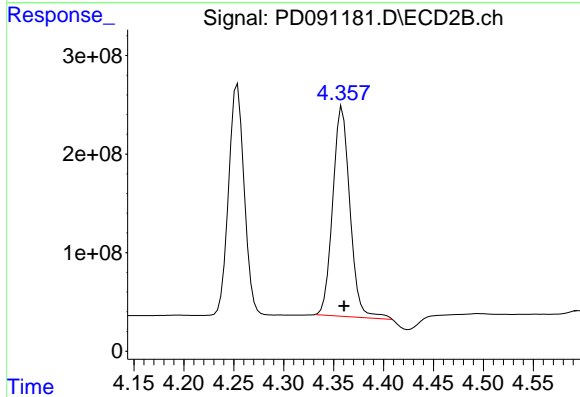
#4 Heptachlor  
R.T.: 4.074 min  
Delta R.T.: -0.001 min  
Response: 2423978529  
Conc: 54.35 ng/ml



#5 Aldrin

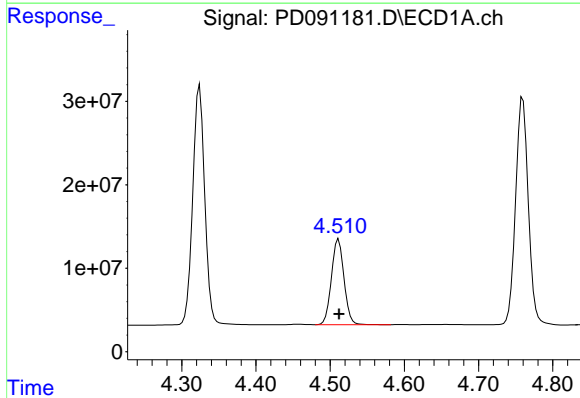
R.T.: 5.263 min  
 Delta R.T.: -0.002 min  
 Response: 308780585  
 Conc: 47.16 ng/ml

Instrument :  
 ECD\_D  
 ClientSampleId :  
 PB170554BS



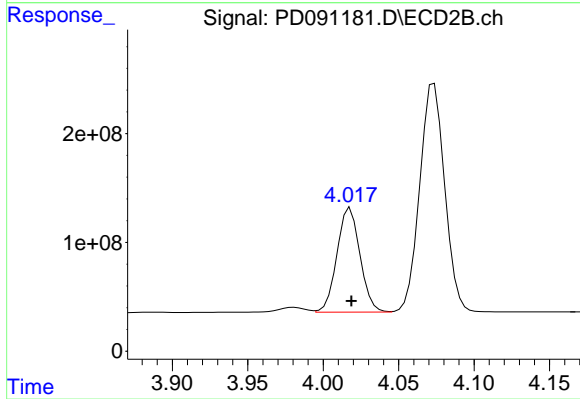
#5 Aldrin

R.T.: 4.359 min  
 Delta R.T.: -0.002 min  
 Response: 2547948848  
 Conc: 55.01 ng/ml



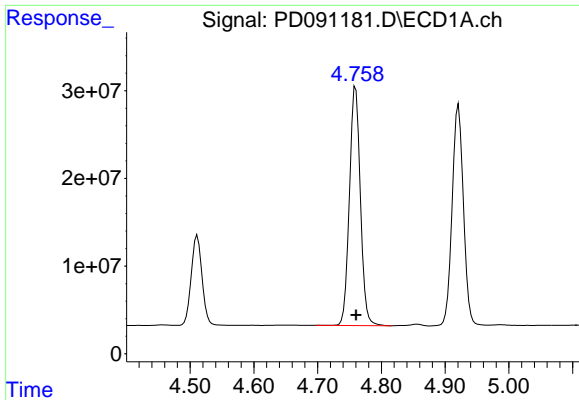
#6 beta-BHC

R.T.: 4.511 min  
 Delta R.T.: 0.000 min  
 Response: 121397671  
 Conc: 46.34 ng/ml



#6 beta-BHC

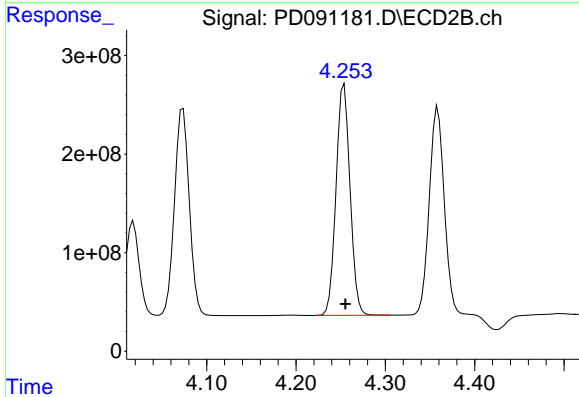
R.T.: 4.018 min  
 Delta R.T.: 0.000 min  
 Response: 1020057401  
 Conc: 51.44 ng/ml



#7 delta-BHC

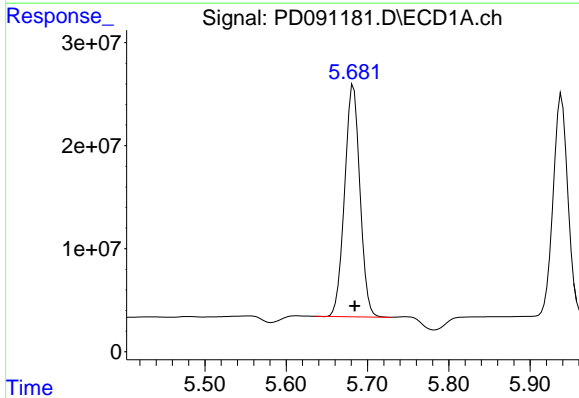
R.T.: 4.760 min  
 Delta R.T.: 0.000 min  
 Response: 325935379  
 Conc: 48.20 ng/ml

Instrument :  
 ECD\_D  
 ClientSampleId :  
 PB170554BS



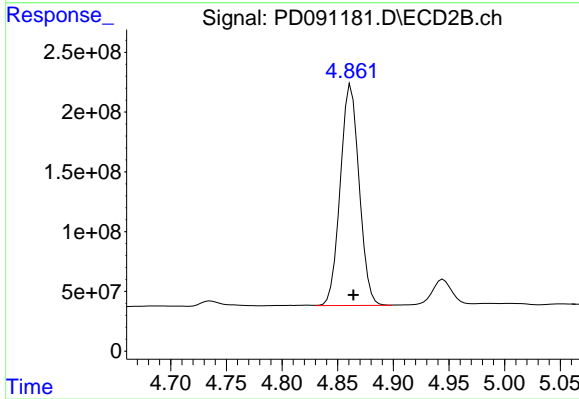
#7 delta-BHC

R.T.: 4.254 min  
 Delta R.T.: -0.001 min  
 Response: 2548570618  
 Conc: 53.41 ng/ml



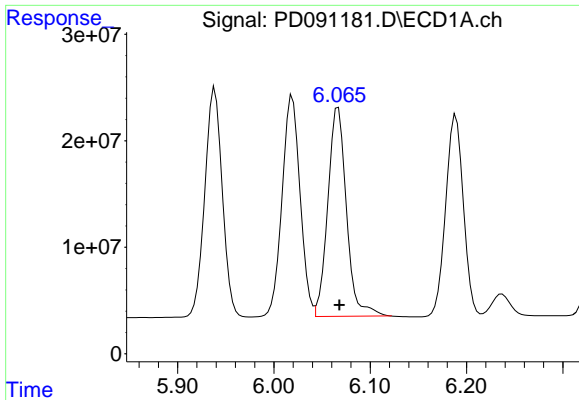
#8 Heptachlor epoxide

R.T.: 5.683 min  
 Delta R.T.: -0.002 min  
 Response: 294266147  
 Conc: 50.83 ng/ml



#8 Heptachlor epoxide

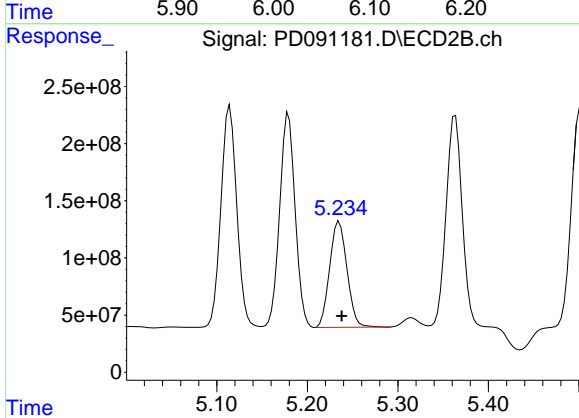
R.T.: 4.862 min  
 Delta R.T.: -0.002 min  
 Response: 2183211841  
 Conc: 51.20 ng/ml



#9 Endosulfan I

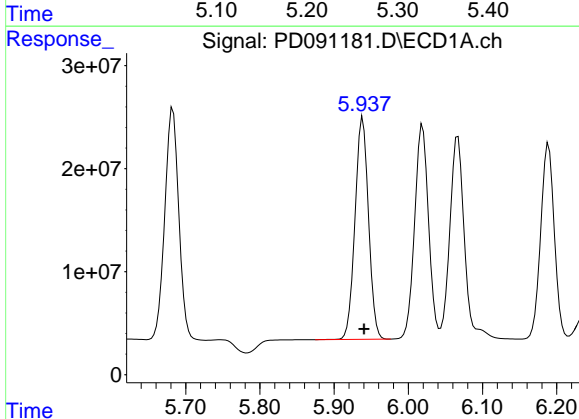
R.T.: 6.067 min  
 Delta R.T.: -0.001 min  
 Response: 265295493  
 Conc: 47.92 ng/ml

Instrument :  
 ECD\_D  
 ClientSampleId :  
 PB170554BS



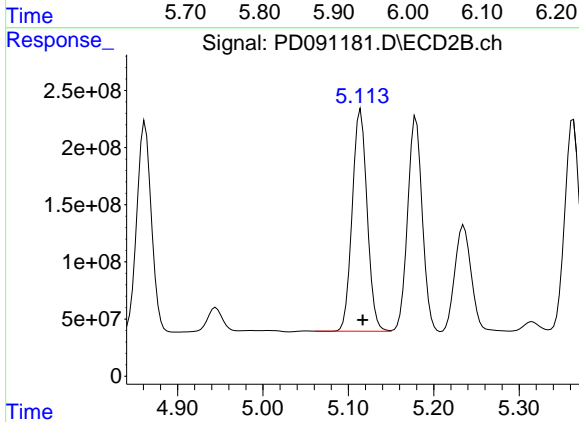
#9 Endosulfan I

R.T.: 5.235 min  
 Delta R.T.: -0.003 min  
 Response: 1234618386  
 Conc: 31.34 ng/ml



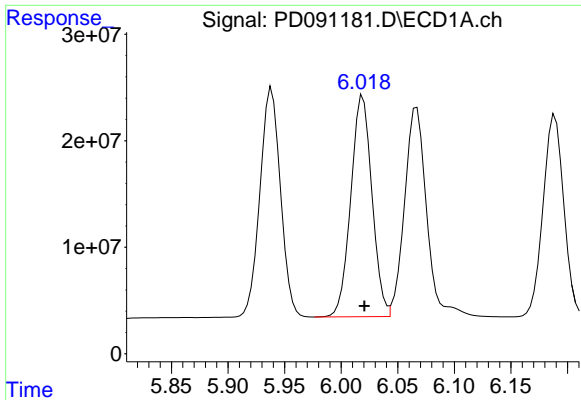
#10 gamma-Chlordane

R.T.: 5.939 min  
 Delta R.T.: -0.002 min  
 Response: 272402934  
 Conc: 45.93 ng/ml



#10 gamma-Chlordane

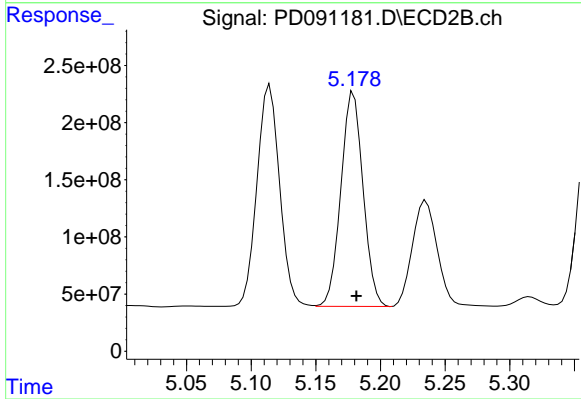
R.T.: 5.114 min  
 Delta R.T.: -0.002 min  
 Response: 2358260661  
 Conc: 52.47 ng/ml



#11 alpha-Chlordane

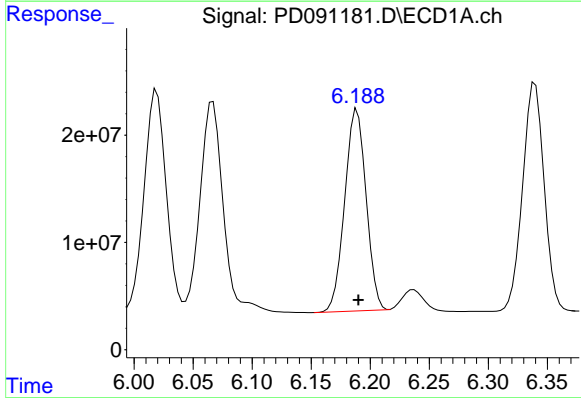
R.T.: 6.019 min  
 Delta R.T.: -0.001 min  
 Response: 270332062  
 Conc: 43.74 ng/ml

Instrument :  
 ECD\_D  
 ClientSampleId :  
 PB170554BS



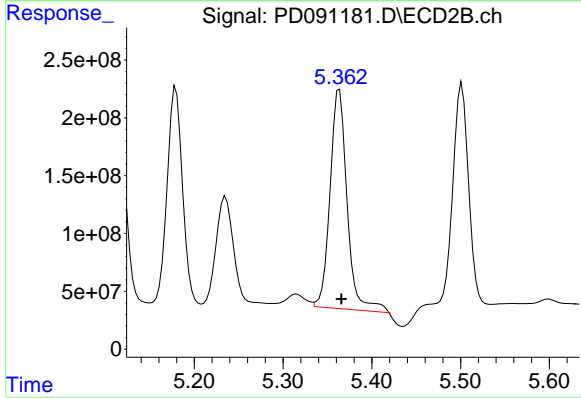
#11 alpha-Chlordane

R.T.: 5.179 min  
 Delta R.T.: -0.002 min  
 Response: 2236690506  
 Conc: 51.85 ng/ml



#12 4,4'-DDE

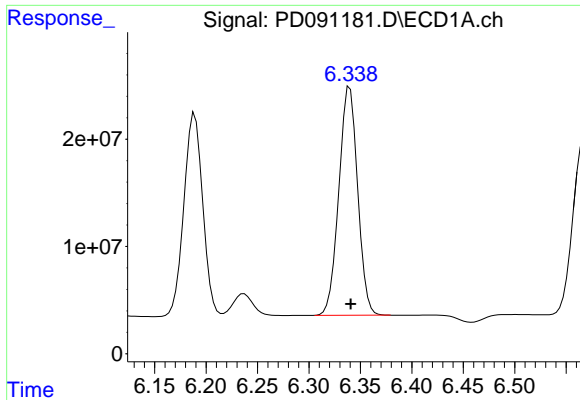
R.T.: 6.189 min  
 Delta R.T.: -0.001 min  
 Response: 236900243  
 Conc: 44.47 ng/ml



#12 4,4'-DDE

R.T.: 5.364 min  
 Delta R.T.: -0.002 min  
 Response: 2535725506  
 Conc: 57.84 ng/ml

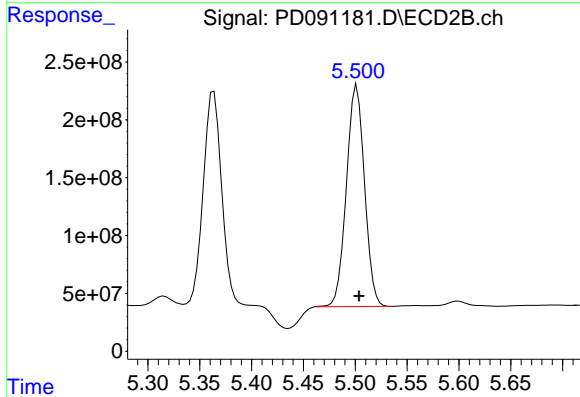




#13 Dieldrin

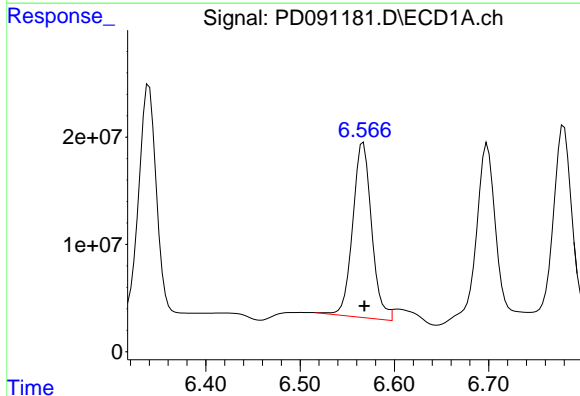
R.T.: 6.340 min  
 Delta R.T.: 0.000 min  
 Response: 271237667  
 Conc: 46.51 ng/ml

Instrument :  
 ECD\_D  
 ClientSampleId :  
 PB170554BS



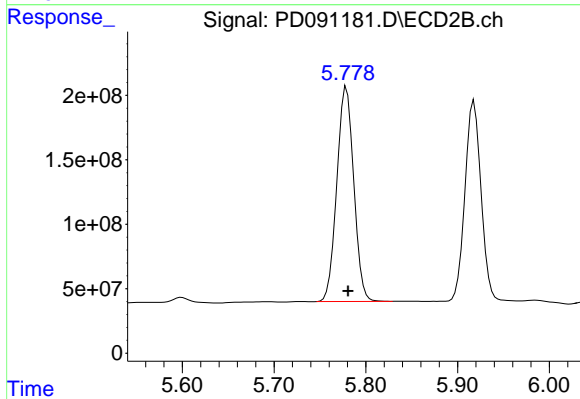
#13 Dieldrin

R.T.: 5.502 min  
 Delta R.T.: -0.002 min  
 Response: 2326661770  
 Conc: 52.66 ng/ml



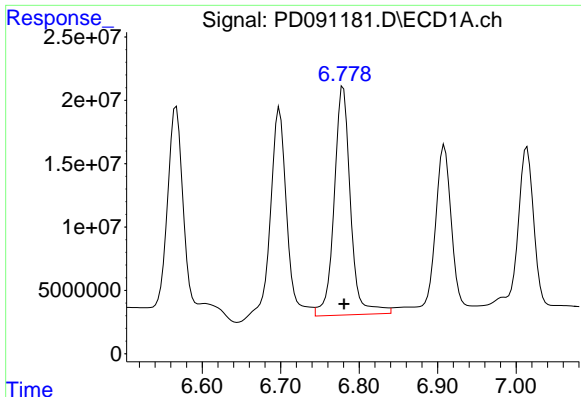
#14 Endrin

R.T.: 6.567 min  
 Delta R.T.: -0.001 min  
 Response: 227417408  
 Conc: 45.91 ng/ml



#14 Endrin

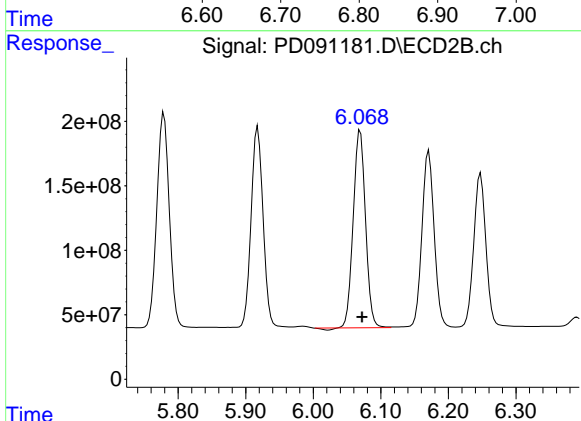
R.T.: 5.779 min  
 Delta R.T.: -0.001 min  
 Response: 2136859425  
 Conc: 52.77 ng/ml



#15 Endosulfan II

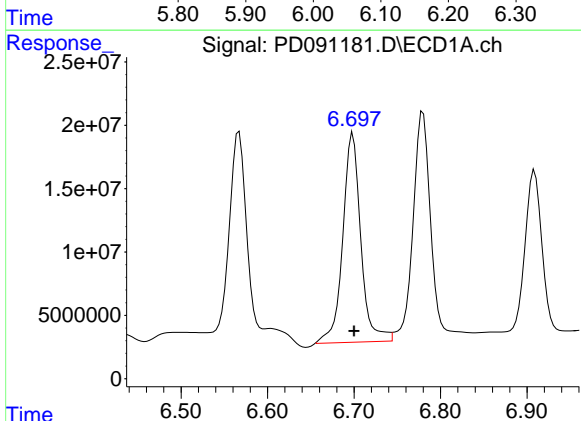
R.T.: 6.780 min  
 Delta R.T.: -0.001 min  
 Response: 261877412  
 Conc: 52.38 ng/ml

Instrument :  
 ECD\_D  
 ClientSampleId :  
 PB170554BS



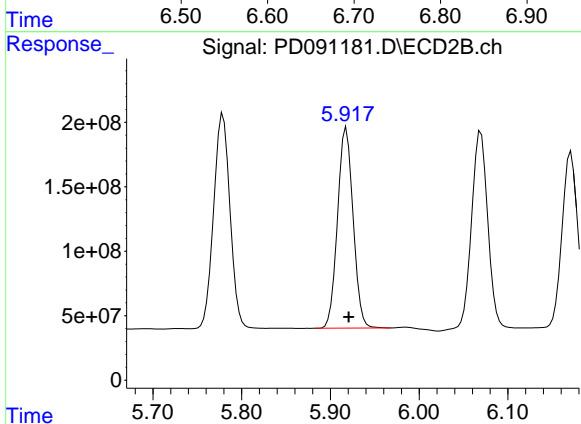
#15 Endosulfan II

R.T.: 6.070 min  
 Delta R.T.: -0.003 min  
 Response: 1928330041  
 Conc: 51.35 ng/ml



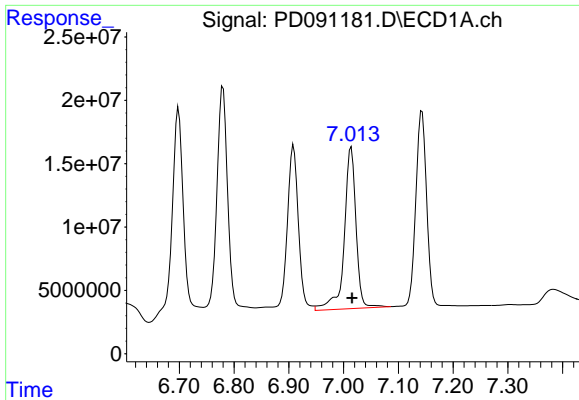
#16 4,4'-DDD

R.T.: 6.699 min  
 Delta R.T.: -0.002 min  
 Response: 237894823  
 Conc: 58.68 ng/ml



#16 4,4'-DDD

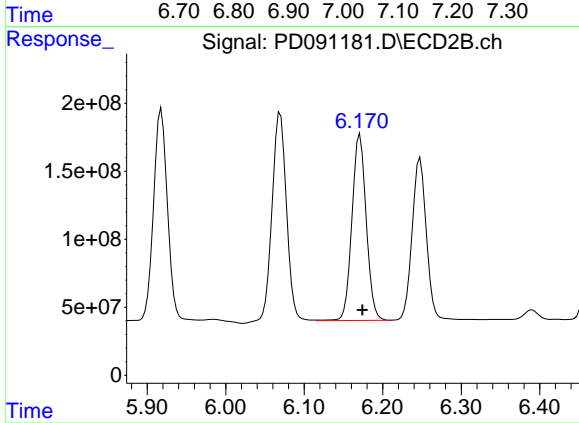
R.T.: 5.918 min  
 Delta R.T.: -0.003 min  
 Response: 1899001728  
 Conc: 52.12 ng/ml



#17 4,4'-DDT

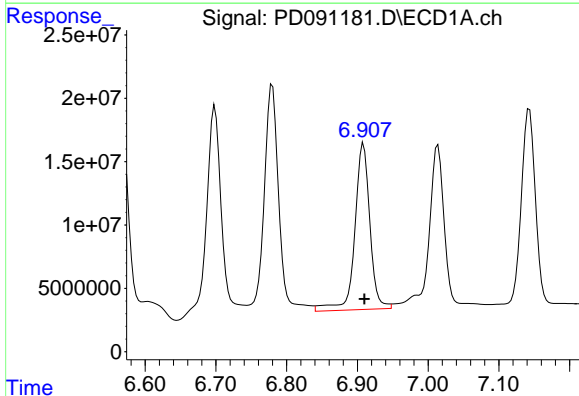
R.T.: 7.014 min  
 Delta R.T.: -0.001 min  
 Response: 190327303  
 Conc: 46.30 ng/ml

Instrument :  
 ECD\_D  
 ClientSampleId :  
 PB170554BS



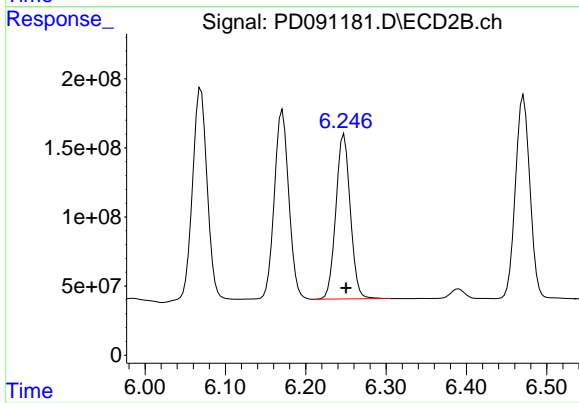
#17 4,4'-DDT

R.T.: 6.171 min  
 Delta R.T.: -0.003 min  
 Response: 1730176748  
 Conc: 49.33 ng/ml



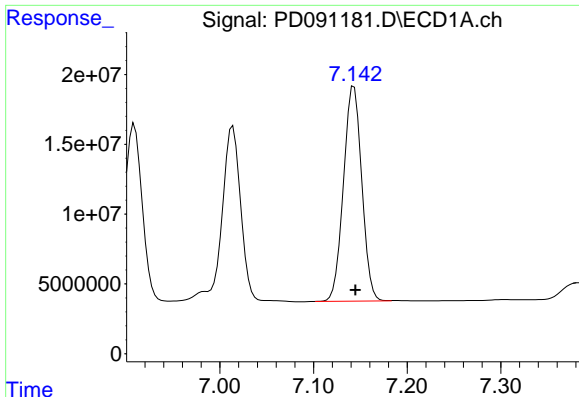
#18 Endrin aldehyde

R.T.: 6.909 min  
 Delta R.T.: -0.001 min  
 Response: 195324401  
 Conc: 53.33 ng/ml



#18 Endrin aldehyde

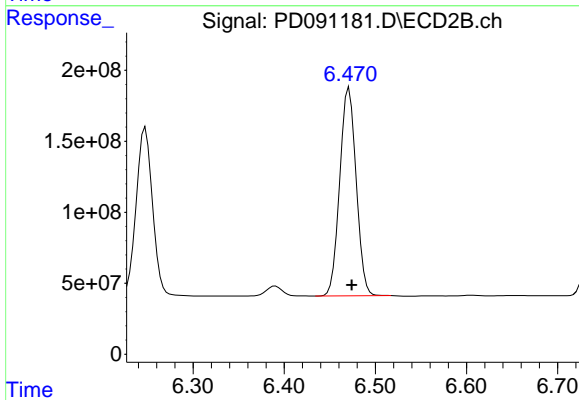
R.T.: 6.248 min  
 Delta R.T.: -0.003 min  
 Response: 1491560355  
 Conc: 53.86 ng/ml



#19 Endosulfan Sulfate

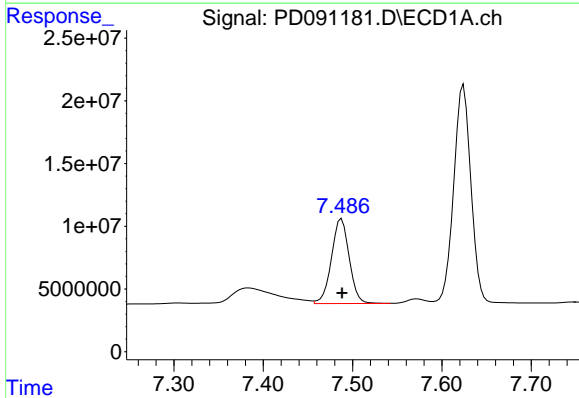
R.T.: 7.143 min  
 Delta R.T.: -0.002 min  
 Response: 209337995  
 Conc: 45.13 ng/ml

Instrument :  
 ECD\_D  
 ClientSampleId :  
 PB170554BS



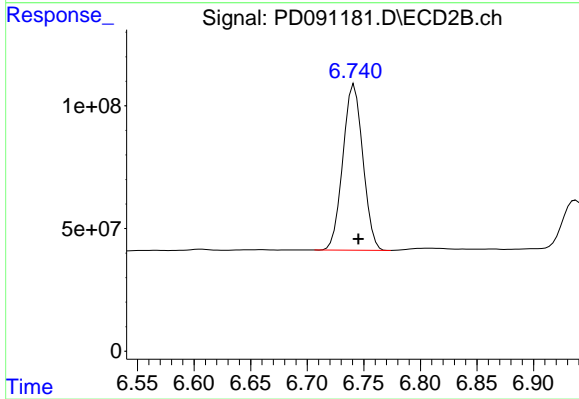
#19 Endosulfan Sulfate

R.T.: 6.471 min  
 Delta R.T.: -0.003 min  
 Response: 1836890986  
 Conc: 51.25 ng/ml



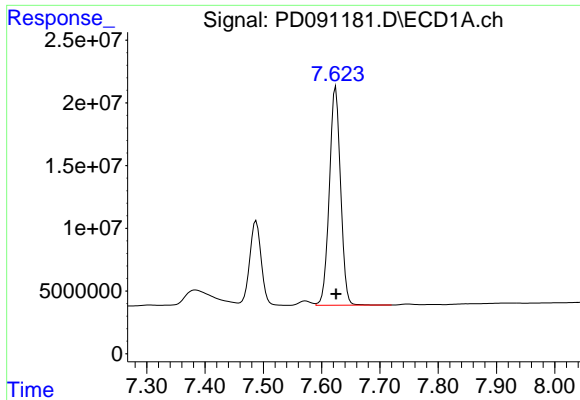
#20 Methoxychlor

R.T.: 7.488 min  
 Delta R.T.: 0.000 min  
 Response: 93158009  
 Conc: 43.83 ng/ml



#20 Methoxychlor

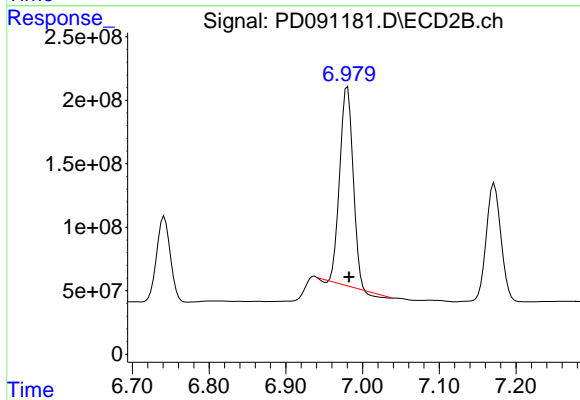
R.T.: 6.742 min  
 Delta R.T.: -0.004 min  
 Response: 832282883  
 Conc: 47.76 ng/ml



#21 Endrin ketone

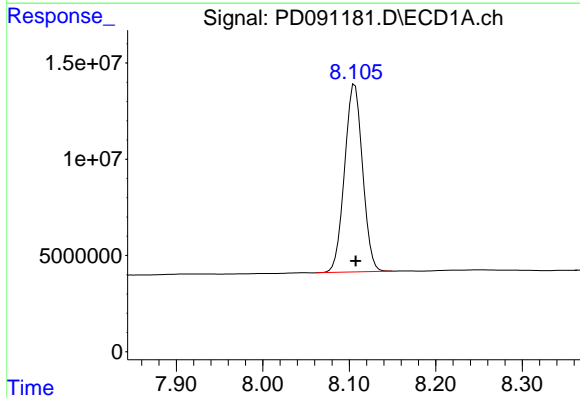
R.T.: 7.624 min  
 Delta R.T.: 0.000 min  
 Response: 233349479  
 Conc: 48.03 ng/ml

Instrument :  
 ECD\_D  
 ClientSampleId :  
 PB170554BS



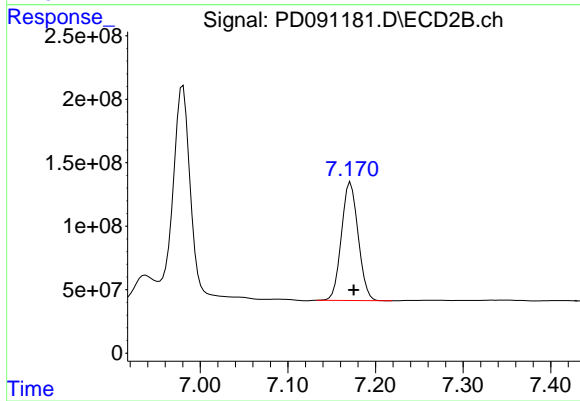
#21 Endrin ketone

R.T.: 6.980 min  
 Delta R.T.: -0.002 min  
 Response: 1847109626  
 Conc: 48.97 ng/ml



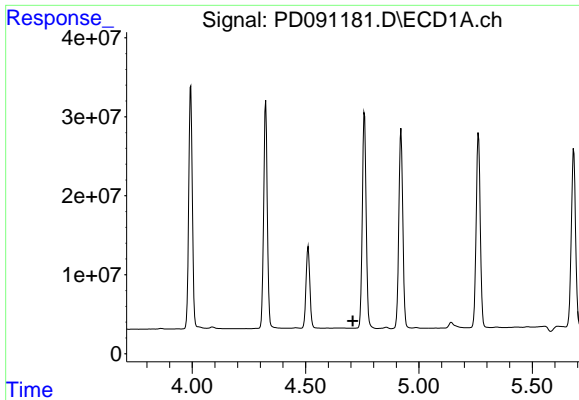
#22 Mirex

R.T.: 8.106 min  
 Delta R.T.: 0.000 min  
 Response: 140354966  
 Conc: 43.85 ng/ml



#22 Mirex

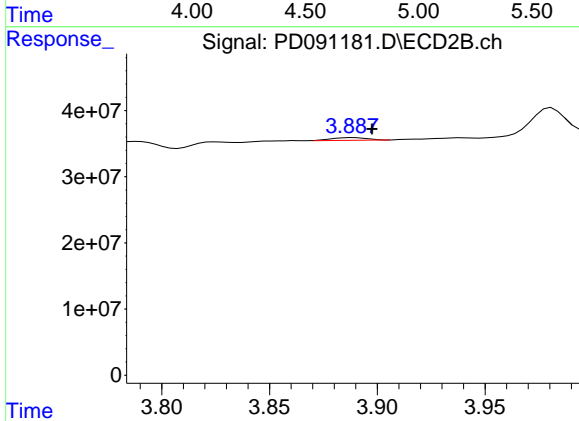
R.T.: 7.172 min  
 Delta R.T.: -0.004 min  
 Response: 1237759496  
 Conc: 48.18 ng/ml



#23 Chlordane-1

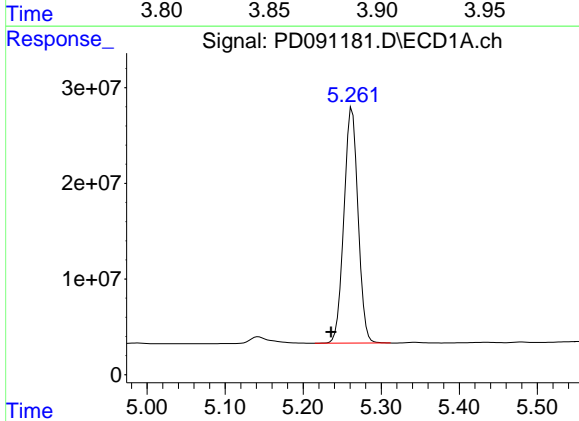
R.T.: 0.000 min  
 Exp R.T.: 4.709 min  
 Response: 0  
 Conc: N.D.

Instrument :  
 ECD\_D  
 ClientSampleId :  
 PB170554BS



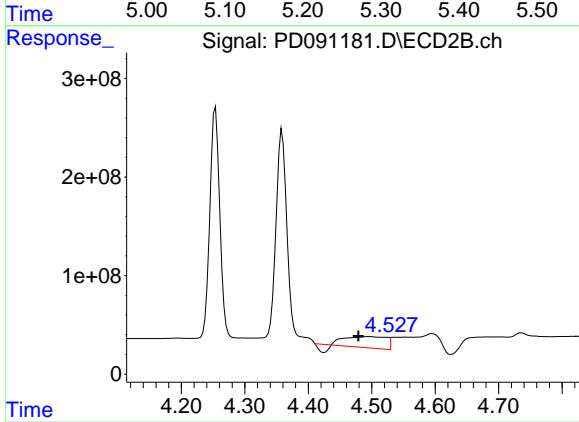
#23 Chlordane-1

R.T.: 3.889 min  
 Delta R.T.: -0.009 min  
 Response: 4627006  
 Conc: 3.71 ng/ml



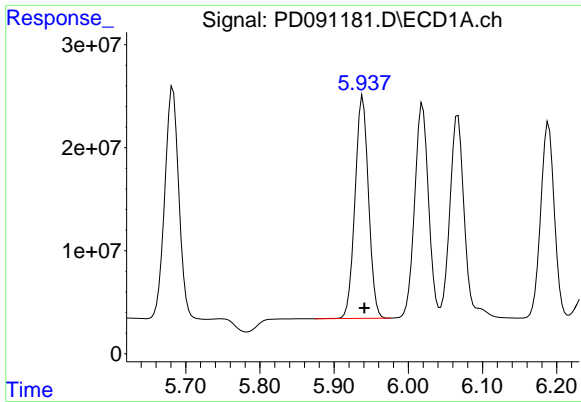
#24 Chlordane-2

R.T.: 5.263 min  
 Delta R.T.: 0.027 min  
 Response: 308780585  
 Conc: 1598.82 ng/ml



#24 Chlordane-2

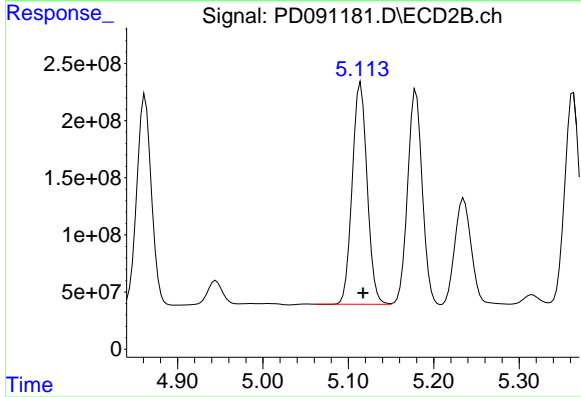
R.T.: 4.496 min  
 Delta R.T.: 0.018 min  
 Response: 454571837  
 Conc: 348.46 ng/ml



#25 Chlordane-3

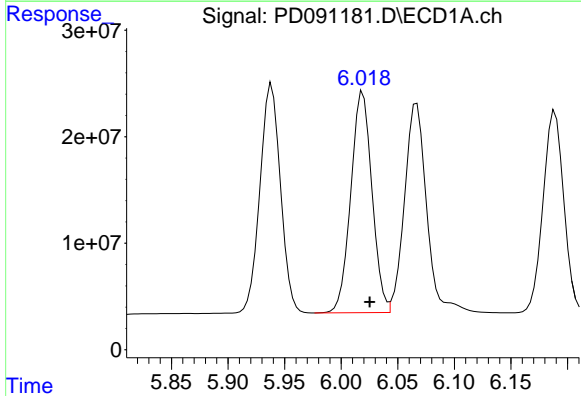
R.T.: 5.939 min  
 Delta R.T.: -0.003 min  
 Response: 272402934  
 Conc: 357.13 ng/ml

Instrument :  
 ECD\_D  
 ClientSampleId :  
 PB170554BS



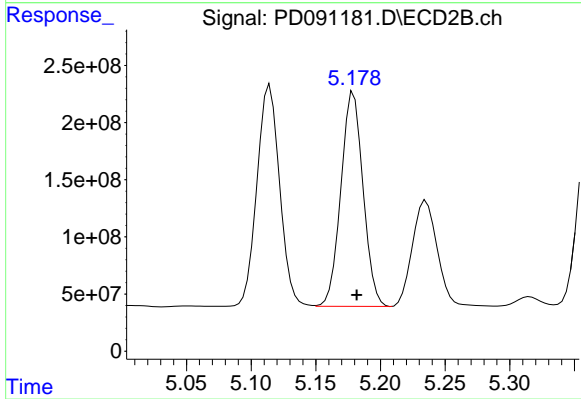
#25 Chlordane-3

R.T.: 5.114 min  
 Delta R.T.: -0.003 min  
 Response: 2358260661  
 Conc: 605.99 ng/ml



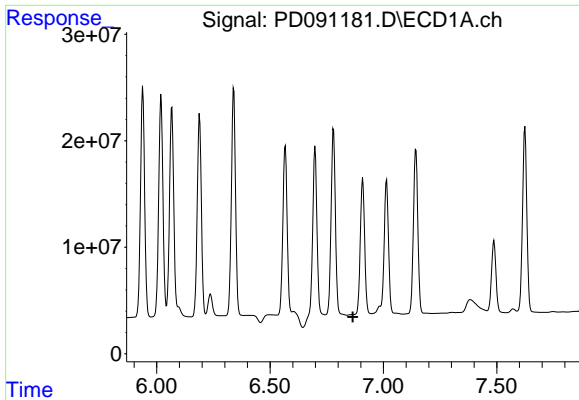
#26 Chlordane-4

R.T.: 6.019 min  
 Delta R.T.: -0.006 min  
 Response: 270332062  
 Conc: 279.01 ng/ml



#26 Chlordane-4

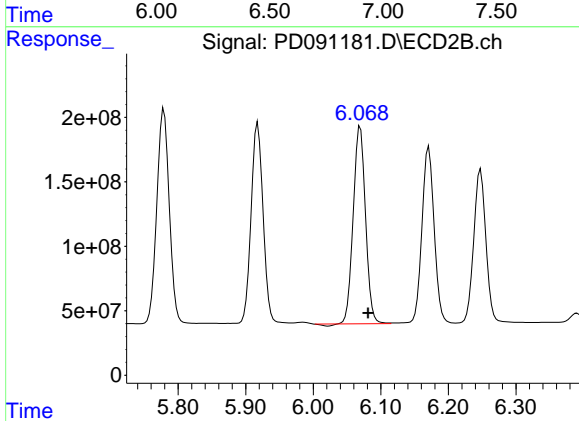
R.T.: 5.179 min  
 Delta R.T.: -0.002 min  
 Response: 2236690506  
 Conc: 669.42 ng/ml



#27 Chlordane-5

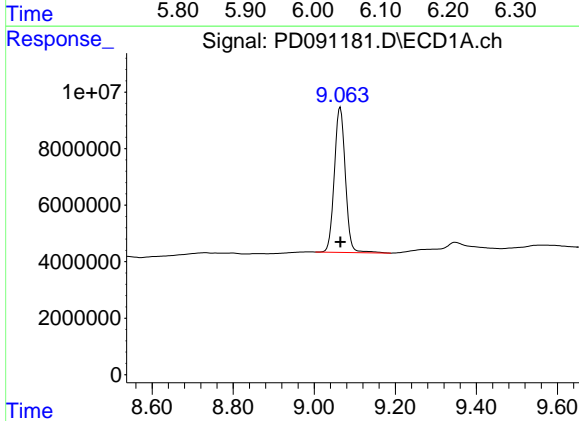
R.T.: 0.000 min  
 Exp R.T.: 6.866 min  
 Response: 0  
 Conc: N.D.

Instrument :  
 ECD\_D  
 ClientSampleId :  
 PB170554BS



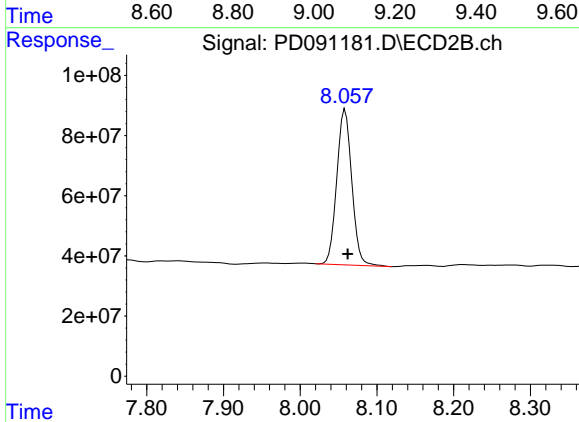
#27 Chlordane-5

R.T.: 6.070 min  
 Delta R.T.: -0.011 min  
 Response: 1928330041  
 Conc: 1306.43 ng/ml



#28 Decachlorobiphenyl

R.T.: 9.064 min  
 Delta R.T.: 0.000 min  
 Response: 96855214  
 Conc: 20.70 ng/ml



#28 Decachlorobiphenyl

R.T.: 8.059 min  
 Delta R.T.: -0.003 min  
 Response: 703565807  
 Conc: 23.23 ng/ml