

Data Path : Z:\pestpcbsrv\HPCHEM1\ECD_D\Data\PD111425\
 Data File : PD091182.D
 Signal(s) : Signal #1: ECD1A.ch Signal #2: ECD2B.ch
 Acq On : 14 Nov 2025 15:42
 Operator : AR\AJ
 Sample : PB170517TB
 Misc :
 ALS Vial : 22 Sample Multiplier: 1

Instrument :
 ECD_D
 ClientSampleId :
 PB170517TB

Integration File signal 1: autoint1.e
 Integration File signal 2: autoint2.e
 Quant Time: Nov 15 01:10:00 2025
 Quant Method : Z:\pestpcbsrv\HPCHEM1\ECD_D\Method\PD101725.M
 Quant Title : GC Extractables
 QLast Update : Fri Oct 17 17:43:28 2025
 Response via : Initial Calibration
 Integrator: ChemStation

Volume Inj. : 1 µl
 Signal #1 Phase : ZB-MR2 Signal #2 Phase: ZB-MR2
 Signal #1 Info : 30M x 0.32mm x0.5 Signal #2 Info : 30M x 0.32mm x 0.25µm

Compound	RT#1	RT#2	Resp#1	Resp#2	ng/ml	ng/ml

System Monitoring Compounds						
1) SA Tetrachlo...	3.544	2.874	66705241	732.8E6	21.420	24.610
28) SA Decachlor...	9.064	8.059	97472508	708.1E6	20.837	23.375
Target Compounds						
2) A alpha-BHC	3.993	3.379	214518	5796907	0.030	0.113 #
3) MA gamma-BHC...	4.335	3.719	598945	2468263	0.088	0.052 #
4) MA Heptachlor	4.919	4.076	1241703	1757258	0.222	0.039 #
5) MB Aldrin	5.262	4.363	181047	1509271	0.028	0.033
6) B beta-BHC	4.513	4.048f	105929	335000	0.040	0.017 #
7) B delta-BHC	4.771	4.252	3886925	2706610	0.575	0.057 #
8) B Heptachlo...	0.000	4.863	0	3181399	N.D.	0.075 #
9) A Endosulfan I	6.063	5.247	212993	433295	0.038	0.011 #
10) B gamma-Chl...	0.000	5.116	0	1781472	N.D.	0.040 #
11) B alpha-Chl...	5.991f	5.188	2596171	2330005	0.420	0.054 #
12) B 4,4'-DDE	0.000	5.365	0	2553337	N.D.	0.058 #
13) MA Dieldrin	6.338	5.504	204649	2052043	0.035	0.046 #
14) MA Endrin	6.567	5.784	252335	4232414	0.051	0.105 #
15) B Endosulfa...	6.776	6.073	790197	2404816	0.158	0.064 #
16) A 4,4'-DDD	0.000	5.924	0	3004692	N.D.	0.082 #
17) MA 4,4'-DDT	7.020	6.175	148863	1598059	0.036	0.046 #
18) B Endrin al...	6.912	6.256	598002	4880156	0.163	0.176
19) B Endosulfa...	0.000	6.473	0	1571703	N.D.	0.044 #
20) A Methoxychlor	7.490	6.740	4704564	1857365	2.213	0.107 #
21) B Endrin ke...	7.627	6.978	1020286	2347997	0.210	0.062 #
22) Mirex	0.000	7.153f	0	2593239	N.D.	0.101 #
23) Chlordane-1	0.000	3.884	0	972465	N.D.	0.780 #
24) Chlordane-2	5.262f	4.476	181047	393899	0.937	0.302 #
25) Chlordane-3	0.000	5.116	0	1781472	N.D.	0.458 #
26) Chlordane-4	0.000	5.188	0	2330005	N.D.	0.697 #
27) Chlordane-5	0.000	6.086	0	4076525	N.D.	2.762 #

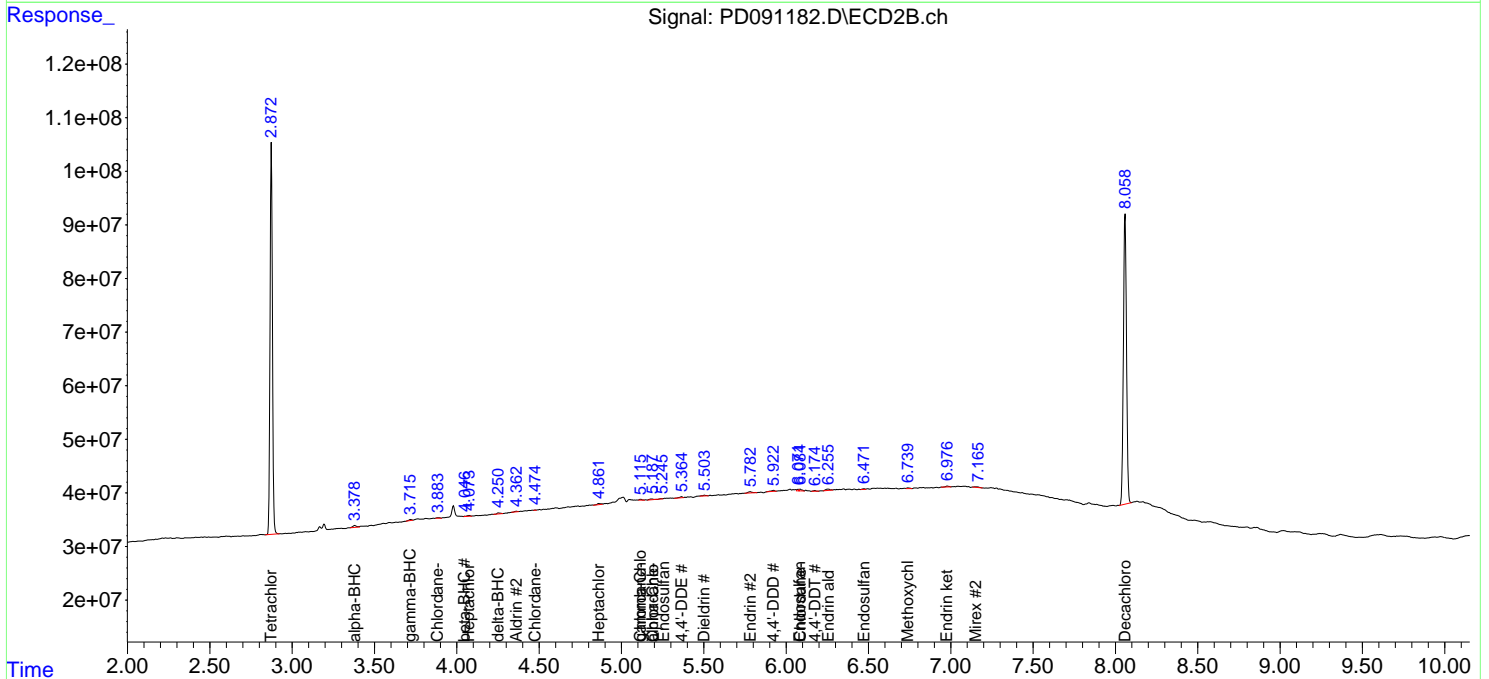
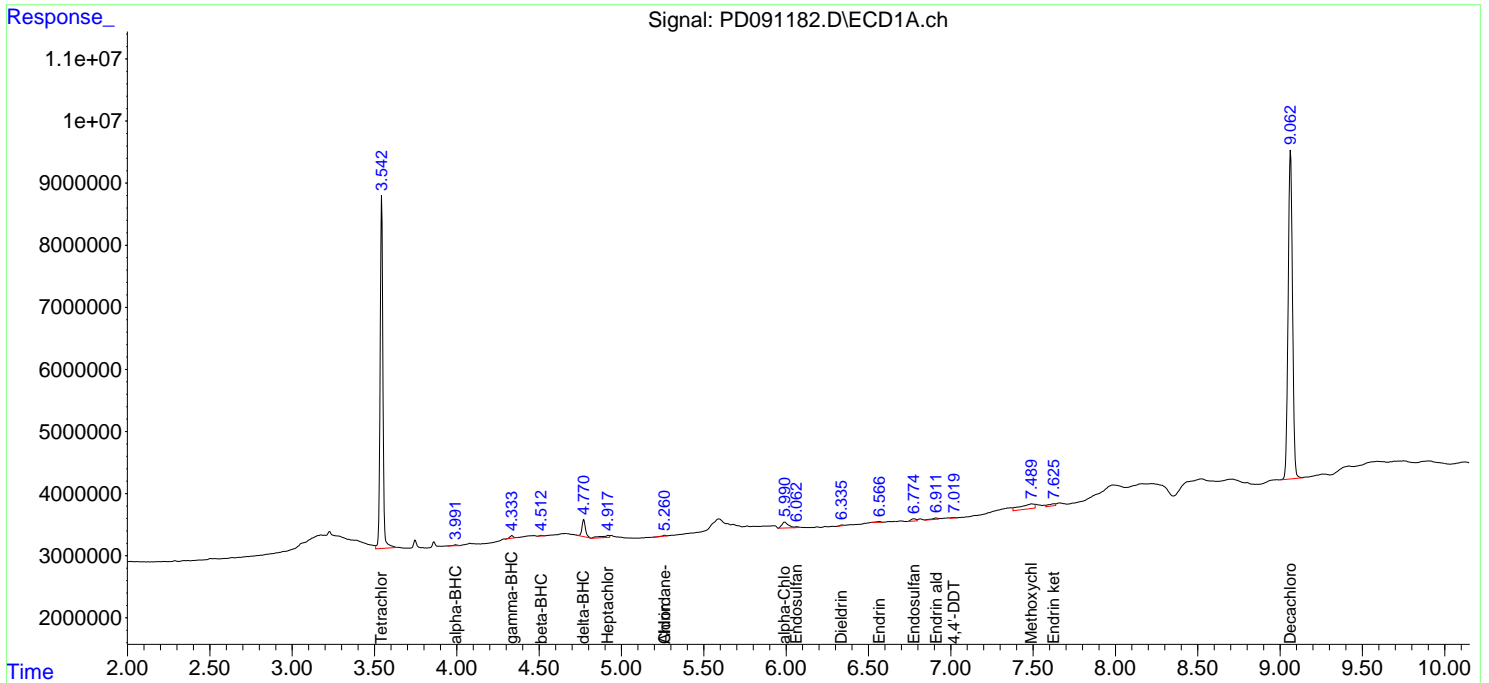
(f)=RT Delta > 1/2 Window (#)=Amounts differ by > 25% (m)=manual int.

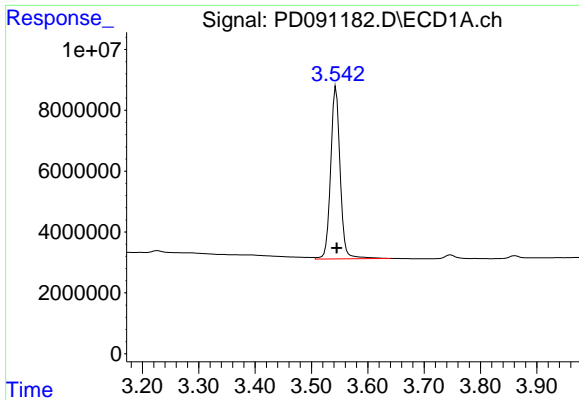
Data Path : Z:\pestpcbsrv\HPCHEM1\ECD_D\Data\PD111425\
 Data File : PD091182.D
 Signal(s) : Signal #1: ECD1A.ch Signal #2: ECD2B.ch
 Acq On : 14 Nov 2025 15:42
 Operator : AR\AJ
 Sample : PB170517TB
 Misc :
 ALS Vial : 22 Sample Multiplier: 1

Instrument :
 ECD_D
 ClientSampleId :
 PB170517TB

Integration File signal 1: autoint1.e
 Integration File signal 2: autoint2.e
 Quant Time: Nov 15 01:10:00 2025
 Quant Method : Z:\pestpcbsrv\HPCHEM1\ECD_D\Method\PD101725.M
 Quant Title : GC Extractables
 QLast Update : Fri Oct 17 17:43:28 2025
 Response via : Initial Calibration
 Integrator: ChemStation

Volume Inj. : 1 µl
 Signal #1 Phase : ZB-MR1 Signal #2 Phase: ZB-MR2
 Signal #1 Info : 30M x 0.32mm x0.5 Signal #2 Info : 30M x 0.32mm x 0.25µm

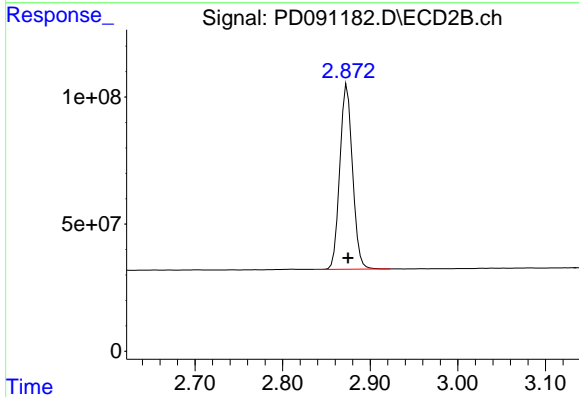




#1 Tetrachloro-m-xylene

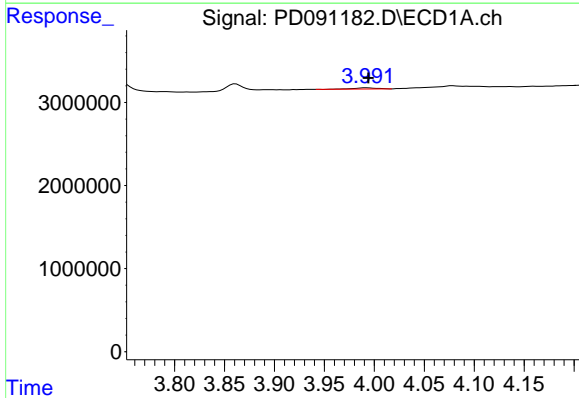
R.T.: 3.544 min
 Delta R.T.: -0.001 min
 Response: 66705241
 Conc: 21.42 ng/ml

Instrument :
 ECD_D
 ClientSampleId :
 PB170517TB



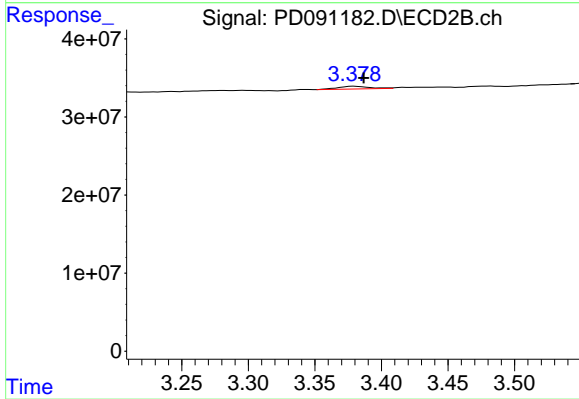
#1 Tetrachloro-m-xylene

R.T.: 2.874 min
 Delta R.T.: -0.001 min
 Response: 732802967
 Conc: 24.61 ng/ml



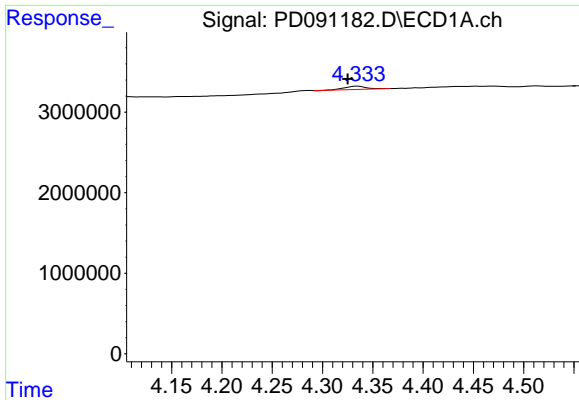
#2 alpha-BHC

R.T.: 3.993 min
 Delta R.T.: -0.001 min
 Response: 214518
 Conc: 0.03 ng/ml



#2 alpha-BHC

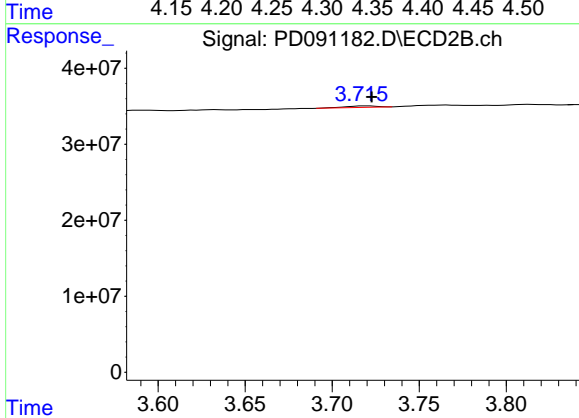
R.T.: 3.379 min
 Delta R.T.: -0.007 min
 Response: 5796907
 Conc: 0.11 ng/ml



#3 gamma-BHC (Lindane)

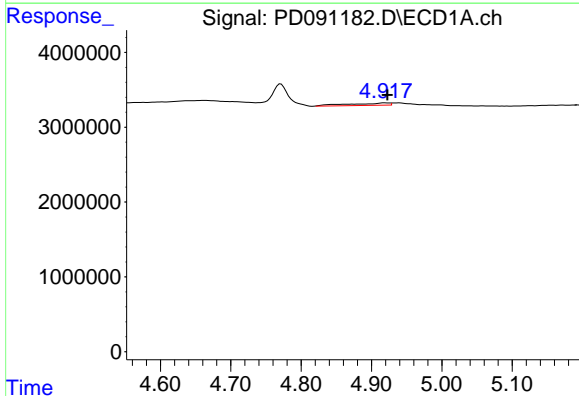
R.T.: 4.335 min
 Delta R.T.: 0.010 min
 Response: 598945
 Conc: 0.09 ng/ml

Instrument :
 ECD_D
 ClientSampleId :
 PB170517TB



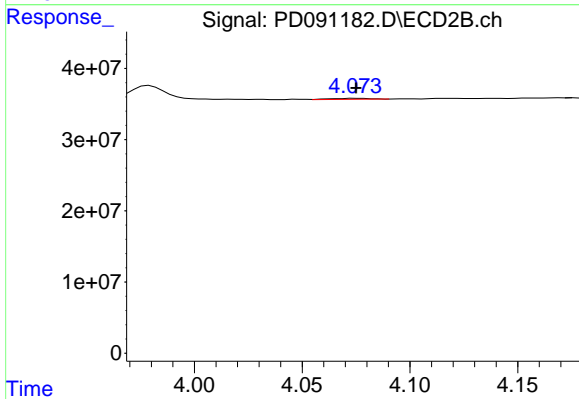
#3 gamma-BHC (Lindane)

R.T.: 3.719 min
 Delta R.T.: -0.004 min
 Response: 2468263
 Conc: 0.05 ng/ml



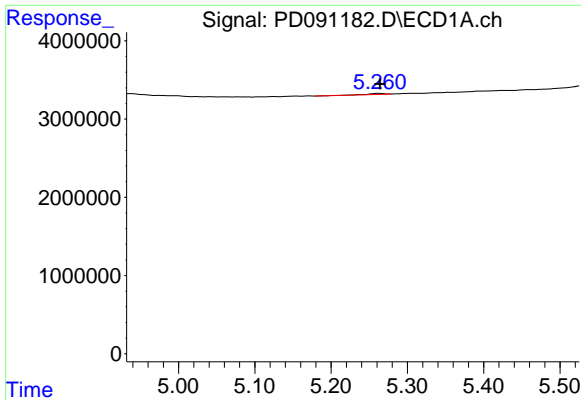
#4 Heptachlor

R.T.: 4.919 min
 Delta R.T.: -0.004 min
 Response: 1241703
 Conc: 0.22 ng/ml



#4 Heptachlor

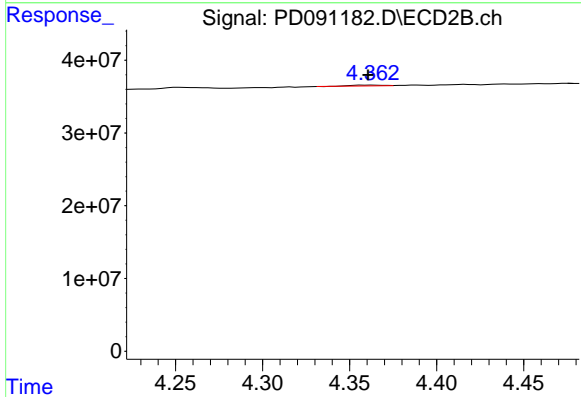
R.T.: 4.076 min
 Delta R.T.: 0.000 min
 Response: 1757258
 Conc: 0.04 ng/ml



#5 Aldrin

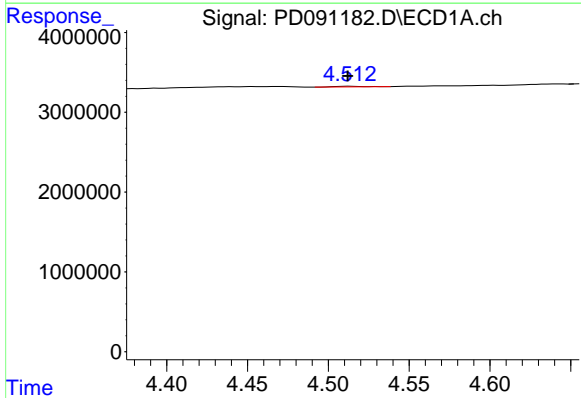
R.T.: 5.262 min
 Delta R.T.: -0.002 min
 Response: 181047
 Conc: 0.03 ng/ml

Instrument :
 ECD_D
 ClientSampleId :
 PB170517TB



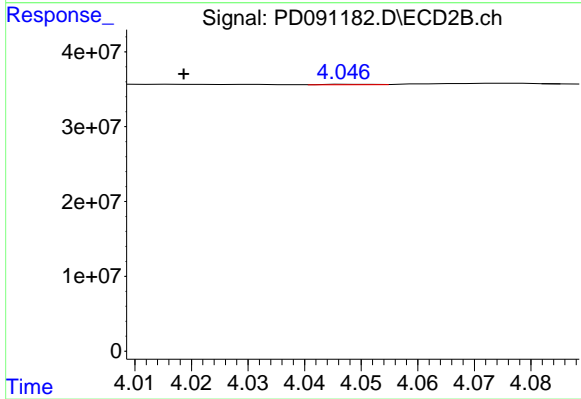
#5 Aldrin

R.T.: 4.363 min
 Delta R.T.: 0.003 min
 Response: 1509271
 Conc: 0.03 ng/ml



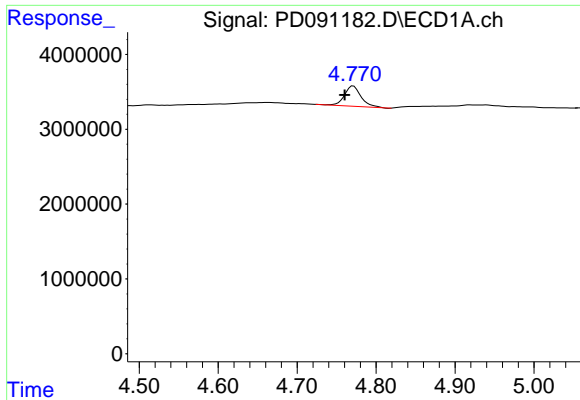
#6 beta-BHC

R.T.: 4.513 min
 Delta R.T.: 0.000 min
 Response: 105929
 Conc: 0.04 ng/ml



#6 beta-BHC

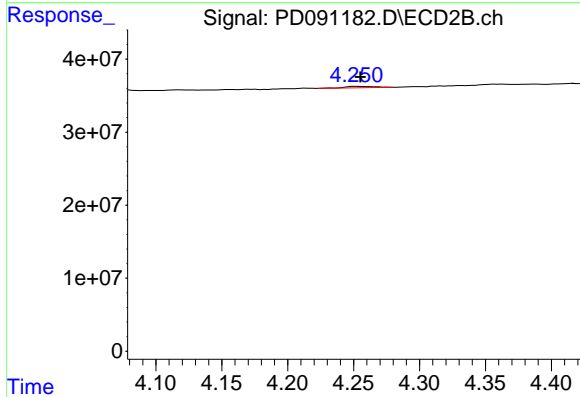
R.T.: 4.048 min
 Delta R.T.: 0.030 min
 Response: 335000
 Conc: 0.02 ng/ml



#7 delta-BHC

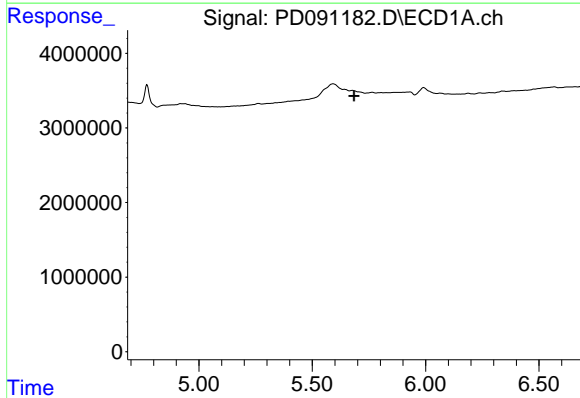
R.T.: 4.771 min
 Delta R.T.: 0.011 min
 Response: 3886925
 Conc: 0.57 ng/ml

Instrument :
 ECD_D
 ClientSampleId :
 PB170517TB



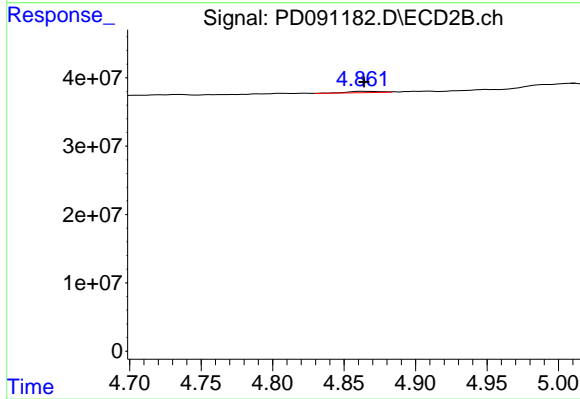
#7 delta-BHC

R.T.: 4.252 min
 Delta R.T.: -0.003 min
 Response: 2706610
 Conc: 0.06 ng/ml



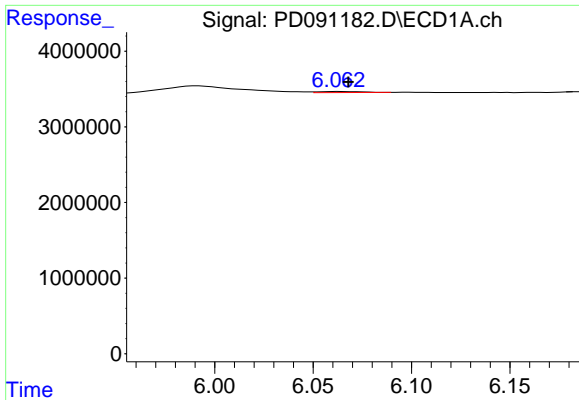
#8 Heptachlor epoxide

R.T.: 0.000 min
 Exp R.T. : 5.684 min
 Response: 0
 Conc: N.D.



#8 Heptachlor epoxide

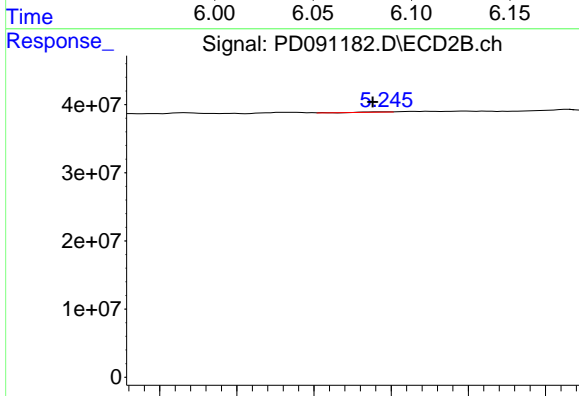
R.T.: 4.863 min
 Delta R.T.: -0.001 min
 Response: 3181399
 Conc: 0.07 ng/ml



#9 Endosulfan I

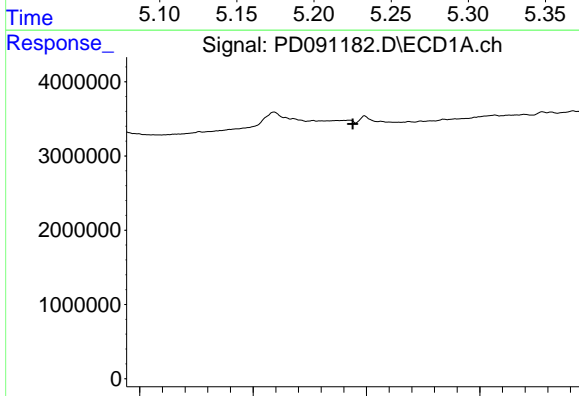
R.T.: 6.063 min
 Delta R.T.: -0.005 min
 Response: 212993
 Conc: 0.04 ng/ml

Instrument :
 ECD_D
 ClientSampleId :
 PB170517TB



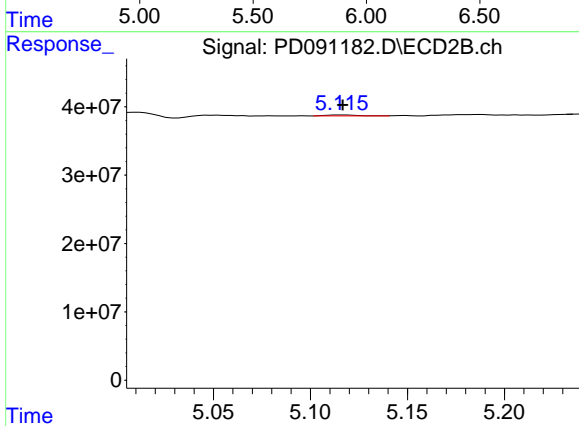
#9 Endosulfan I

R.T.: 5.247 min
 Delta R.T.: 0.009 min
 Response: 433295
 Conc: 0.01 ng/ml



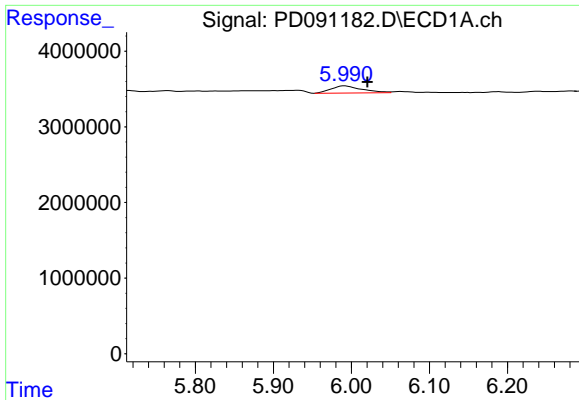
#10 gamma-Chlordane

R.T.: 0.000 min
 Exp R.T. : 5.940 min
 Response: 0
 Conc: N.D.



#10 gamma-Chlordane

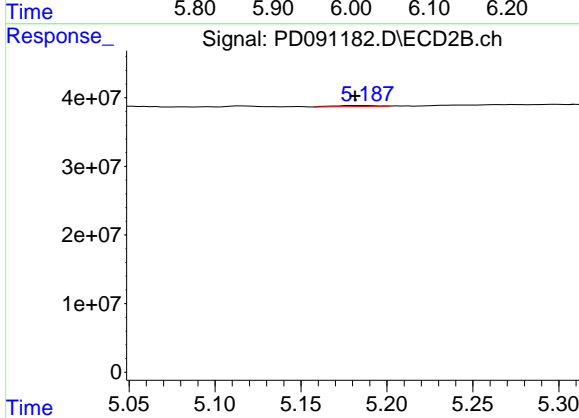
R.T.: 5.116 min
 Delta R.T.: 0.000 min
 Response: 1781472
 Conc: 0.04 ng/ml



#11 alpha-Chlordane

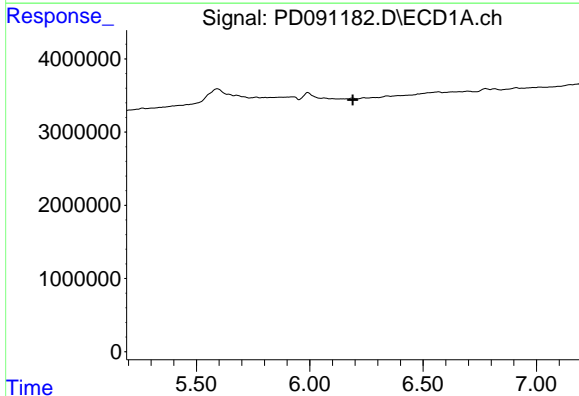
R.T.: 5.991 min
 Delta R.T.: -0.029 min
 Response: 2596171
 Conc: 0.42 ng/ml

Instrument :
 ECD_D
 ClientSampleId :
 PB170517TB



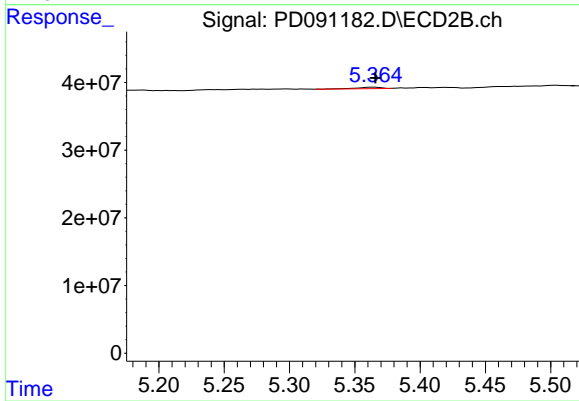
#11 alpha-Chlordane

R.T.: 5.188 min
 Delta R.T.: 0.006 min
 Response: 2330005
 Conc: 0.05 ng/ml



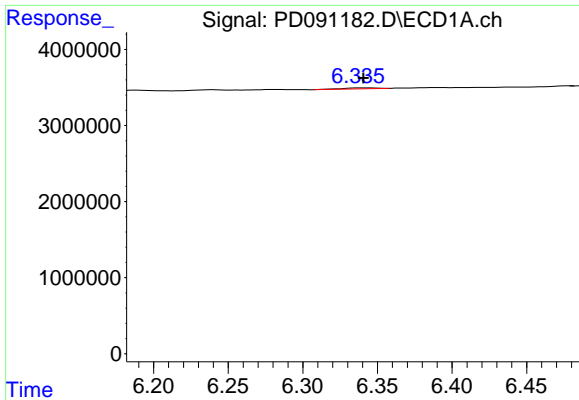
#12 4,4'-DDE

R.T.: 0.000 min
 Exp R.T. : 6.190 min
 Response: 0
 Conc: N.D.



#12 4,4'-DDE

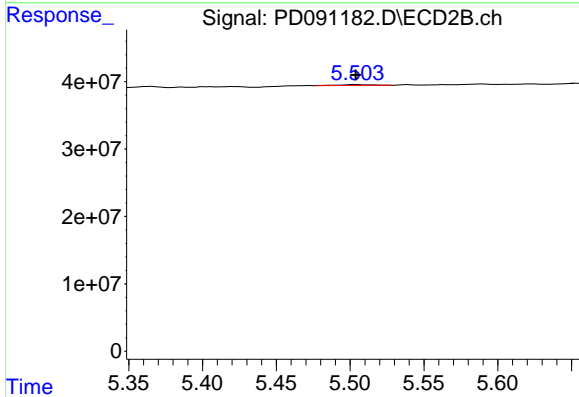
R.T.: 5.365 min
 Delta R.T.: 0.000 min
 Response: 2553337
 Conc: 0.06 ng/ml



#13 Dieldrin

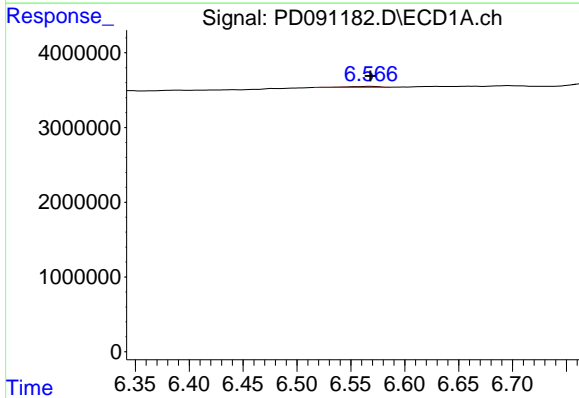
R.T.: 6.338 min
 Delta R.T.: -0.002 min
 Response: 204649
 Conc: 0.04 ng/ml

Instrument :
 ECD_D
 ClientSampleId :
 PB170517TB



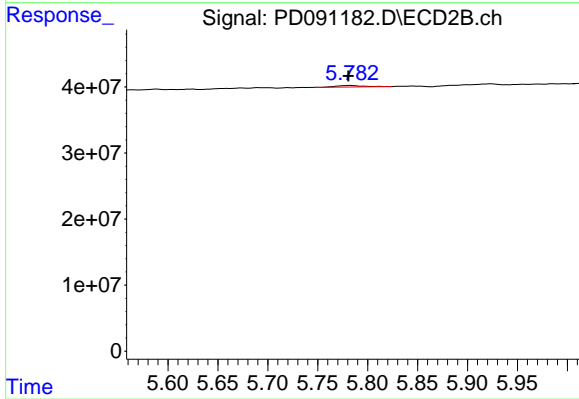
#13 Dieldrin

R.T.: 5.504 min
 Delta R.T.: 0.000 min
 Response: 2052043
 Conc: 0.05 ng/ml



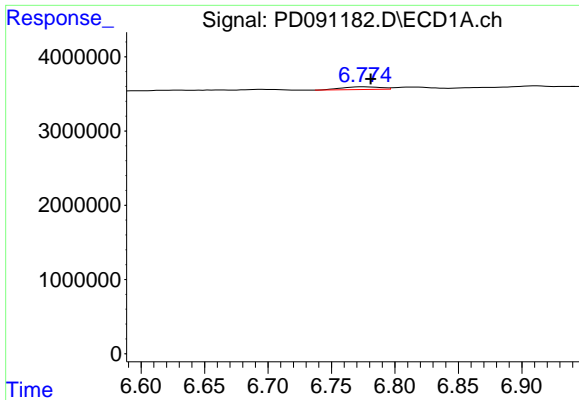
#14 Endrin

R.T.: 6.567 min
 Delta R.T.: 0.000 min
 Response: 252335
 Conc: 0.05 ng/ml



#14 Endrin

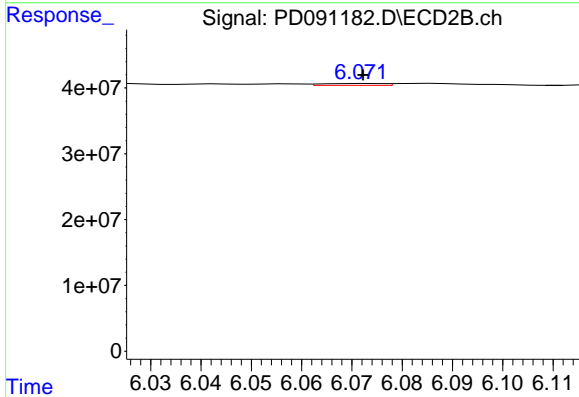
R.T.: 5.784 min
 Delta R.T.: 0.003 min
 Response: 4232414
 Conc: 0.10 ng/ml



#15 Endosulfan II

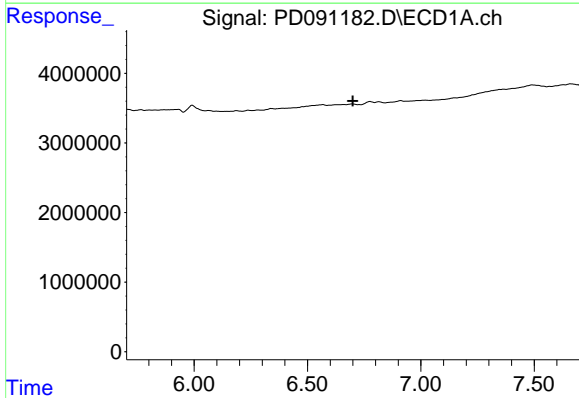
R.T.: 6.776 min
 Delta R.T.: -0.005 min
 Response: 790197
 Conc: 0.16 ng/ml

Instrument :
 ECD_D
 ClientSampleId :
 PB170517TB



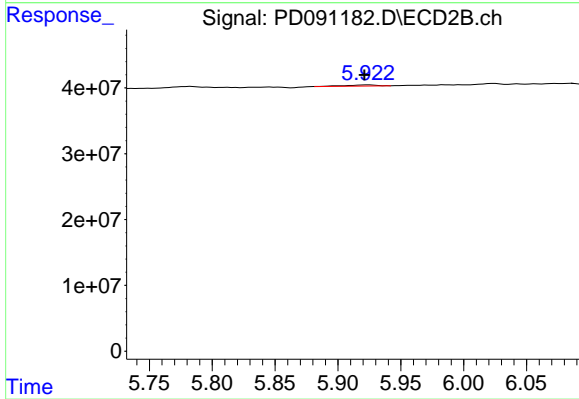
#15 Endosulfan II

R.T.: 6.073 min
 Delta R.T.: 0.000 min
 Response: 2404816
 Conc: 0.06 ng/ml



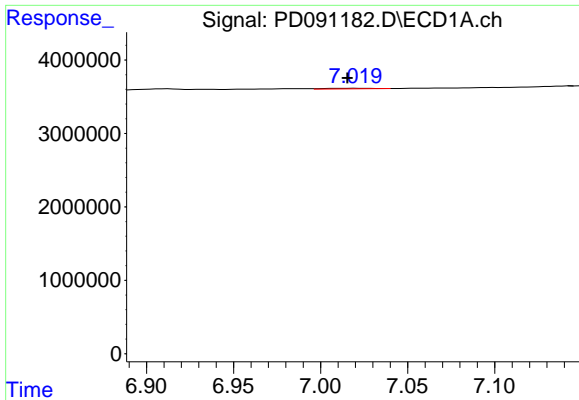
#16 4,4'-DDD

R.T.: 0.000 min
 Exp R.T. : 6.700 min
 Response: 0
 Conc: N.D.



#16 4,4'-DDD

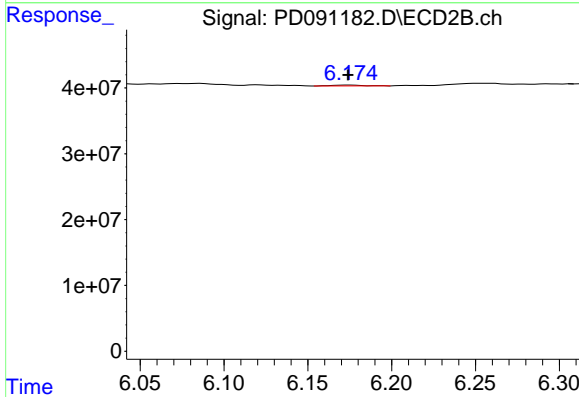
R.T.: 5.924 min
 Delta R.T.: 0.003 min
 Response: 3004692
 Conc: 0.08 ng/ml



#17 4,4'-DDT

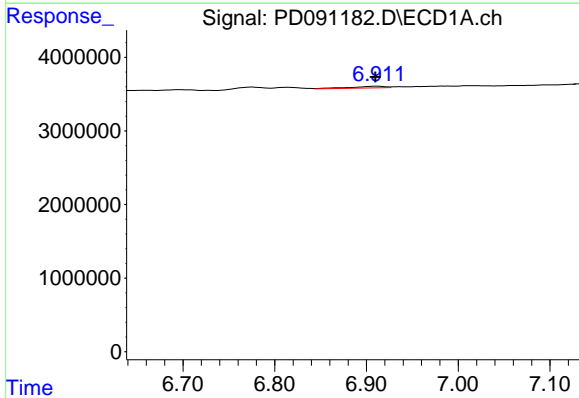
R.T.: 7.020 min
 Delta R.T.: 0.005 min
 Response: 148863
 Conc: 0.04 ng/ml

Instrument :
 ECD_D
 ClientSampleId :
 PB170517TB



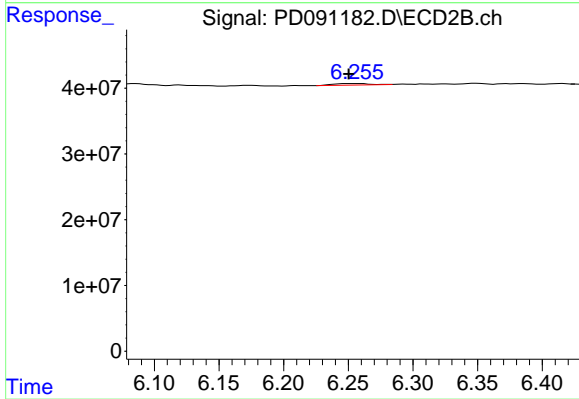
#17 4,4'-DDT

R.T.: 6.175 min
 Delta R.T.: 0.001 min
 Response: 1598059
 Conc: 0.05 ng/ml



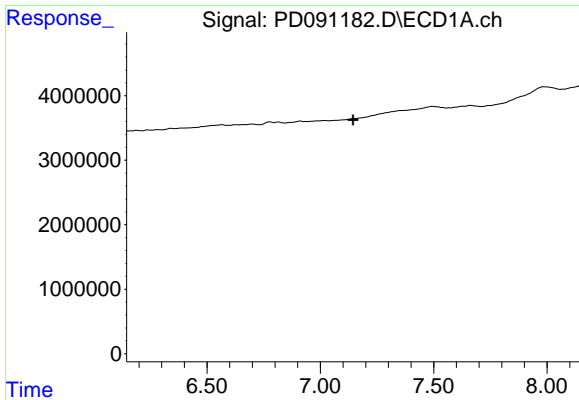
#18 Endrin aldehyde

R.T.: 6.912 min
 Delta R.T.: 0.002 min
 Response: 598002
 Conc: 0.16 ng/ml



#18 Endrin aldehyde

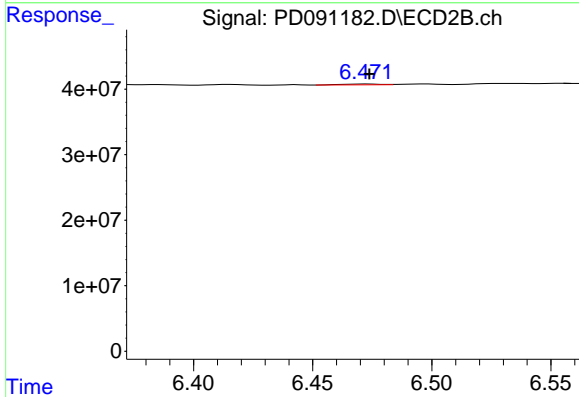
R.T.: 6.256 min
 Delta R.T.: 0.006 min
 Response: 4880156
 Conc: 0.18 ng/ml



#19 Endosulfan Sulfate

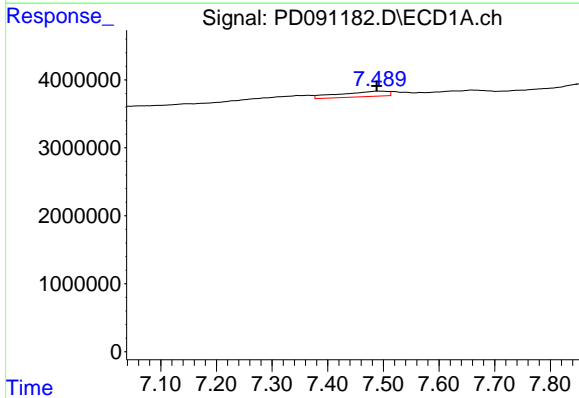
R.T.: 0.000 min
 Exp R.T.: 7.145 min
 Response: 0
 Conc: N.D.

Instrument :
 ECD_D
 ClientSampleId :
 PB170517TB



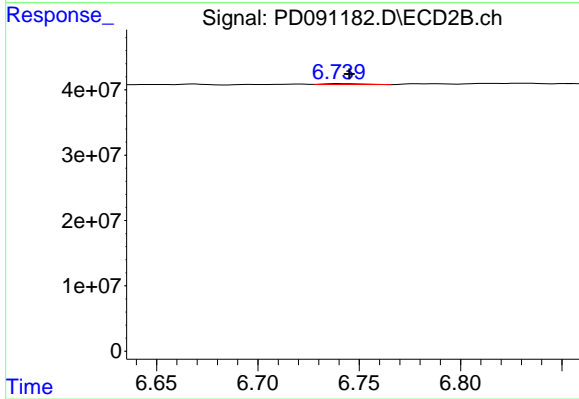
#19 Endosulfan Sulfate

R.T.: 6.473 min
 Delta R.T.: -0.001 min
 Response: 1571703
 Conc: 0.04 ng/ml



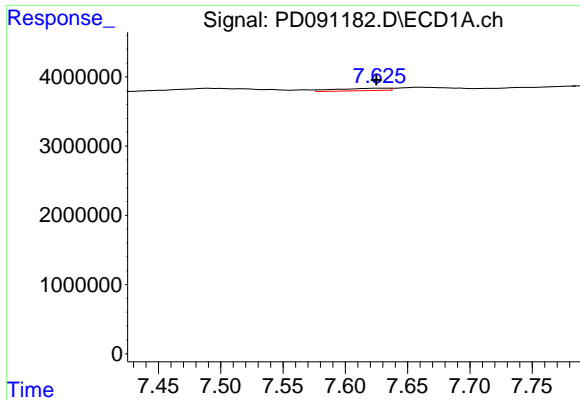
#20 Methoxychlor

R.T.: 7.490 min
 Delta R.T.: 0.002 min
 Response: 4704564
 Conc: 2.21 ng/ml



#20 Methoxychlor

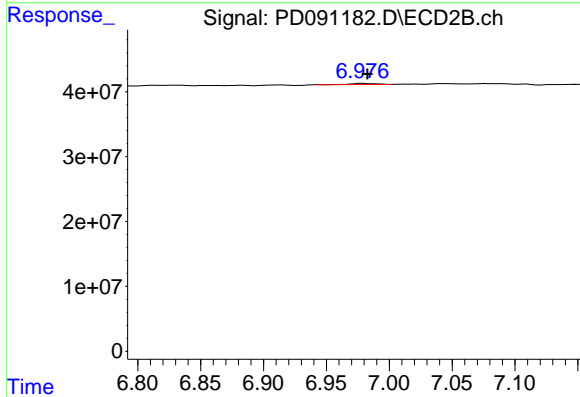
R.T.: 6.740 min
 Delta R.T.: -0.005 min
 Response: 1857365
 Conc: 0.11 ng/ml



#21 Endrin ketone

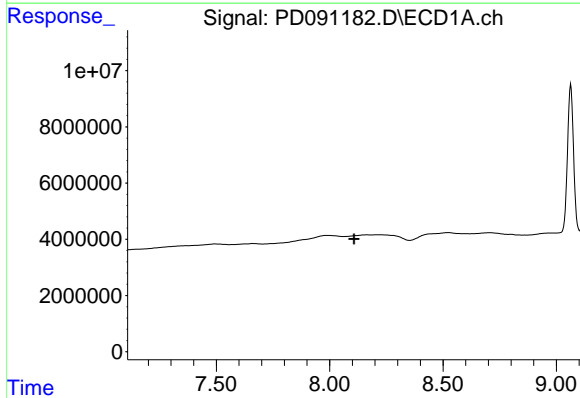
R.T.: 7.627 min
 Delta R.T.: 0.002 min
 Response: 1020286
 Conc: 0.21 ng/ml

Instrument : ECD_D
 ClientSampleId : PB170517TB



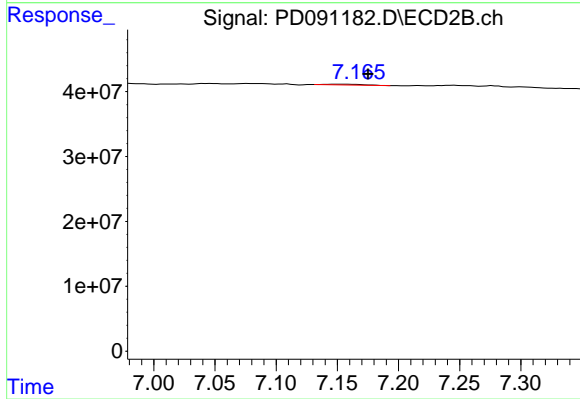
#21 Endrin ketone

R.T.: 6.978 min
 Delta R.T.: -0.005 min
 Response: 2347997
 Conc: 0.06 ng/ml



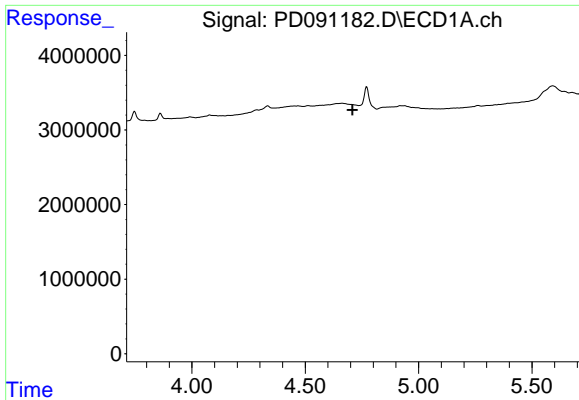
#22 Mirex

R.T.: 0.000 min
 Exp R.T. : 8.107 min
 Response: 0
 Conc: N.D.



#22 Mirex

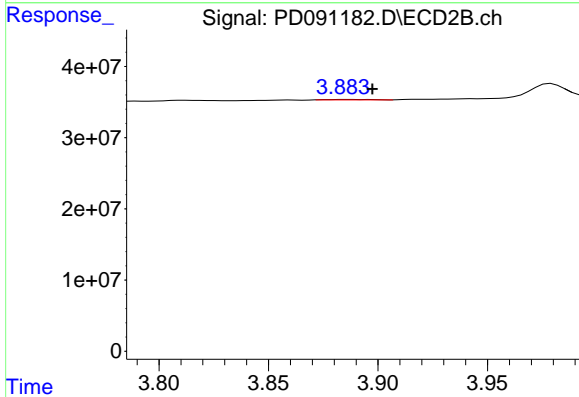
R.T.: 7.153 min
 Delta R.T.: -0.022 min
 Response: 2593239
 Conc: 0.10 ng/ml



#23 Chlordane-1

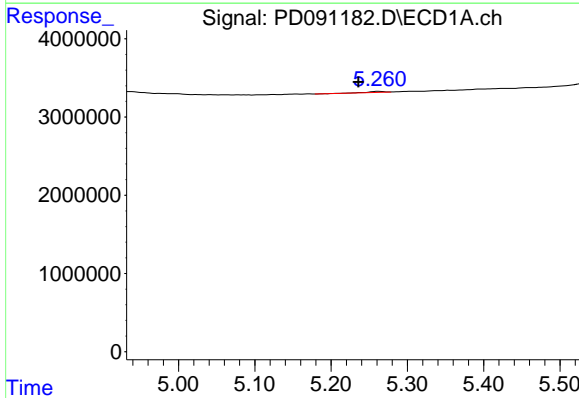
R.T.: 0.000 min
 Exp R.T.: 4.709 min
 Response: 0
 Conc: N.D.

Instrument :
 ECD_D
 ClientSampleId :
 PB170517TB



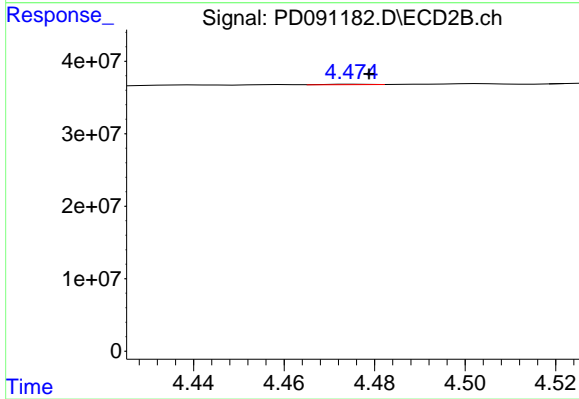
#23 Chlordane-1

R.T.: 3.884 min
 Delta R.T.: -0.013 min
 Response: 972465
 Conc: 0.78 ng/ml



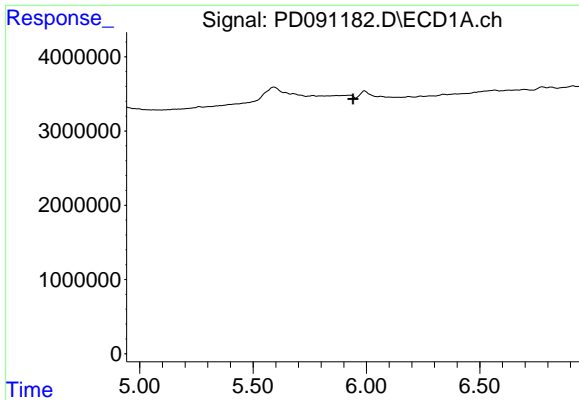
#24 Chlordane-2

R.T.: 5.262 min
 Delta R.T.: 0.026 min
 Response: 181047
 Conc: 0.94 ng/ml



#24 Chlordane-2

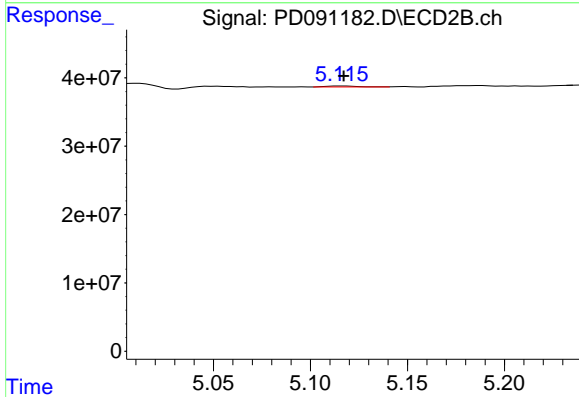
R.T.: 4.476 min
 Delta R.T.: -0.003 min
 Response: 393899
 Conc: 0.30 ng/ml



#25 Chlordane-3

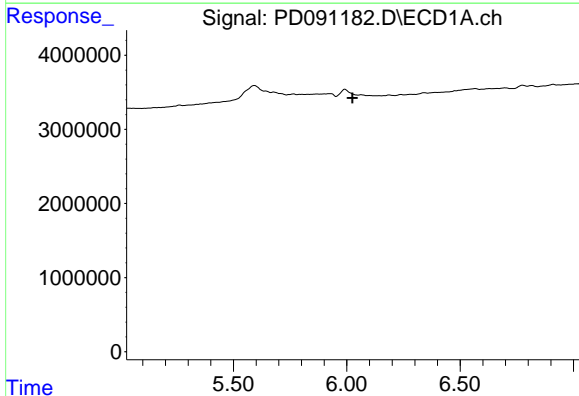
R.T.: 0.000 min
 Exp R.T.: 5.941 min
 Response: 0
 Conc: N.D.

Instrument :
 ECD_D
 ClientSampleId :
 PB170517TB



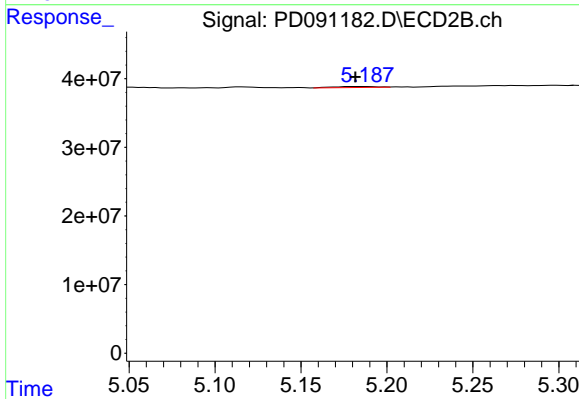
#25 Chlordane-3

R.T.: 5.116 min
 Delta R.T.: 0.000 min
 Response: 1781472
 Conc: 0.46 ng/ml



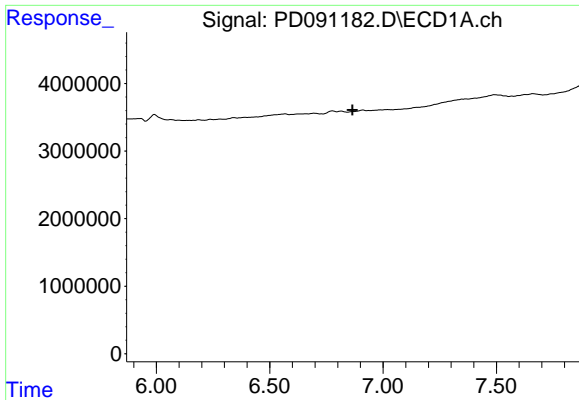
#26 Chlordane-4

R.T.: 0.000 min
 Exp R.T.: 6.025 min
 Response: 0
 Conc: N.D.



#26 Chlordane-4

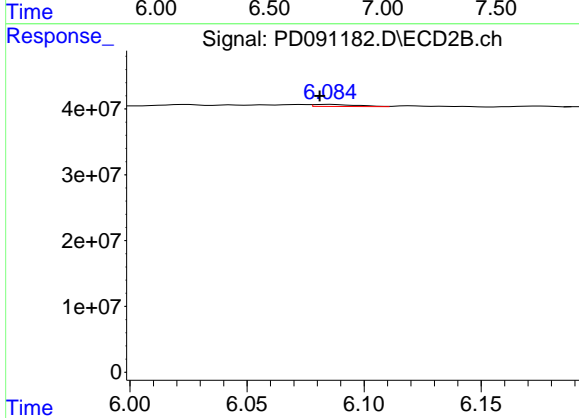
R.T.: 5.188 min
 Delta R.T.: 0.006 min
 Response: 2330005
 Conc: 0.70 ng/ml



#27 Chlordane-5

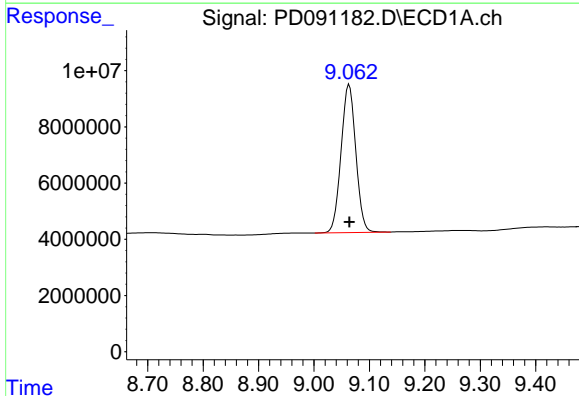
R.T.: 0.000 min
 Exp R.T.: 6.866 min
 Response: 0
 Conc: N.D.

Instrument :
 ECD_D
 ClientSampleId :
 PB170517TB



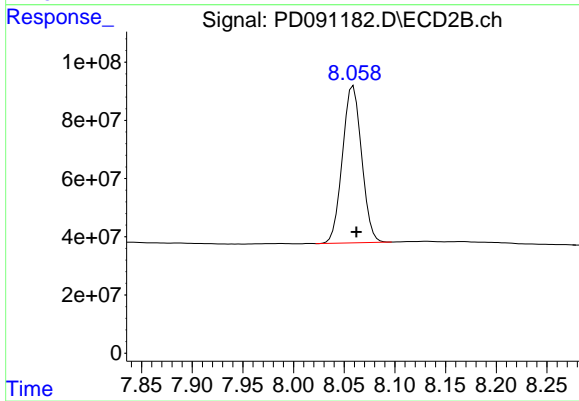
#27 Chlordane-5

R.T.: 6.086 min
 Delta R.T.: 0.005 min
 Response: 4076525
 Conc: 2.76 ng/ml



#28 Decachlorobiphenyl

R.T.: 9.064 min
 Delta R.T.: 0.000 min
 Response: 97472508
 Conc: 20.84 ng/ml



#28 Decachlorobiphenyl

R.T.: 8.059 min
 Delta R.T.: -0.003 min
 Response: 708051156
 Conc: 23.37 ng/ml