

Data Path : Z:\pestpcbsrv\HPCHEM1\ECD_D\Data\PD111425\
 Data File : PD091187.D
 Signal(s) : Signal #1: ECD1A.ch Signal #2: ECD2B.ch
 Acq On : 14 Nov 2025 16:50
 Operator : AR\AJ
 Sample : Q3609-09
 Misc :
 ALS Vial : 27 Sample Multiplier: 1

Instrument :
 ECD_D
 ClientSampleId :
 AU-713-COMP-03

Integration File signal 1: autoint1.e
 Integration File signal 2: autoint2.e
 Quant Time: Nov 15 01:10:45 2025
 Quant Method : Z:\pestpcbsrv\HPCHEM1\ECD_D\Method\PD101725.M
 Quant Title : GC Extractables
 QLast Update : Fri Oct 17 17:43:28 2025
 Response via : Initial Calibration
 Integrator: ChemStation

Volume Inj. : 1 µl
 Signal #1 Phase : ZB-MR2 Signal #2 Phase: ZB-MR2
 Signal #1 Info : 30M x 0.32mm x0.5 Signal #2 Info : 30M x 0.32mm x 0.25µm

| Compound | RT#1 | RT#2 | Resp#1 | Resp#2 | ng/ml | ng/ml |
|-----------------------------|--------|--------|----------|----------|--------|----------|
| ----- | | | | | | |
| System Monitoring Compounds | | | | | | |
| 1) SA Tetrachlo... | 3.543 | 2.873 | 46970994 | 499.0E6 | 15.083 | 16.757 |
| 28) SA Decachlor... | 9.063 | 8.058 | 63049585 | 471.1E6 | 13.478 | 15.552 |
| Target Compounds | | | | | | |
| 2) A alpha-BHC | 3.993 | 3.381 | 263608 | 6044825 | 0.037 | 0.118 # |
| 3) MA gamma-BHC... | 0.000 | 3.730 | 0 | 2310465 | N.D. | 0.049 # |
| 4) MA Heptachlor | 4.939f | 4.069 | 1391776 | 19334040 | 0.249 | 0.433 # |
| 5) MB Aldrin | 5.246f | 4.372 | 625522 | -2066403 | 0.096 | N.D. # |
| 6) B beta-BHC | 4.507 | 4.030 | 1091563 | 6710792 | 0.417 | 0.338 |
| 7) B delta-BHC | 4.772 | 4.263 | 23140494 | 77058 | 3.422 | 0.002 # |
| 8) B Heptachlo... | 5.681 | 4.863 | 2660554 | 18129727 | 0.460 | 0.425 |
| 9) A Endosulfan I | 6.039f | 5.234 | 16166085 | 2580053 | 2.920 | 0.065 # |
| 10) B gamma-Chl... | 5.930 | 5.111 | 549349 | -902958 | 0.093 | N.D. # |
| 11) B alpha-Chl... | 6.039f | 5.175 | 16166085 | 2057780 | 2.616 | 0.048 # |
| 12) B 4,4'-DDE | 6.169f | 5.362 | 307156 | 1220585 | 0.058 | 0.028 # |
| 13) MA Dieldrin | 6.354 | 5.500 | 316118 | 1659855 | 0.054 | 0.038 # |
| 14) MA Endrin | 0.000 | 5.785 | 0 | 88179165 | N.D. | 2.178 # |
| 15) B Endosulfa... | 0.000 | 6.066 | 0 | 704561 | N.D. | 0.019 # |
| 16) A 4,4'-DDD | 0.000 | 5.926 | 0 | 5635828 | N.D. | 0.155 # |
| 17) MA 4,4'-DDT | 7.018 | 6.181 | 245348 | 647004 | 0.060 | 0.018 # |
| 18) B Endrin al... | 6.928f | 6.247 | 3468706 | 2997030 | 0.947 | 0.108 # |
| 19) B Endosulfa... | 0.000 | 6.458f | 0 | 2094689 | N.D. | 0.058 # |
| 20) A Methoxychlor | 7.480 | 6.750 | 708253 | 834831 | 0.333 | 0.048 # |
| 21) B Endrin ke... | 7.613 | 6.976 | 539599 | 1949006 | 0.111 | 0.052 # |
| 22) Mirex | 0.000 | 7.162 | 0 | 4320032 | N.D. | 0.168 # |
| 23) Chlordane-1 | 4.683f | 3.900 | 4031674 | 19212186 | 21.335 | 15.416 # |
| 24) Chlordane-2 | 5.246 | 4.485 | 625522 | 5067837 | 3.239 | 3.885 |
| 25) Chlordane-3 | 5.930 | 5.111 | 549349 | -902958 | 0.720 | N.D. # |
| 26) Chlordane-4 | 6.039 | 5.175 | 16166085 | 2057780 | 16.685 | 0.616 # |
| 27) Chlordane-5 | 0.000 | 6.086 | 0 | 4144917 | N.D. | 2.808 # |

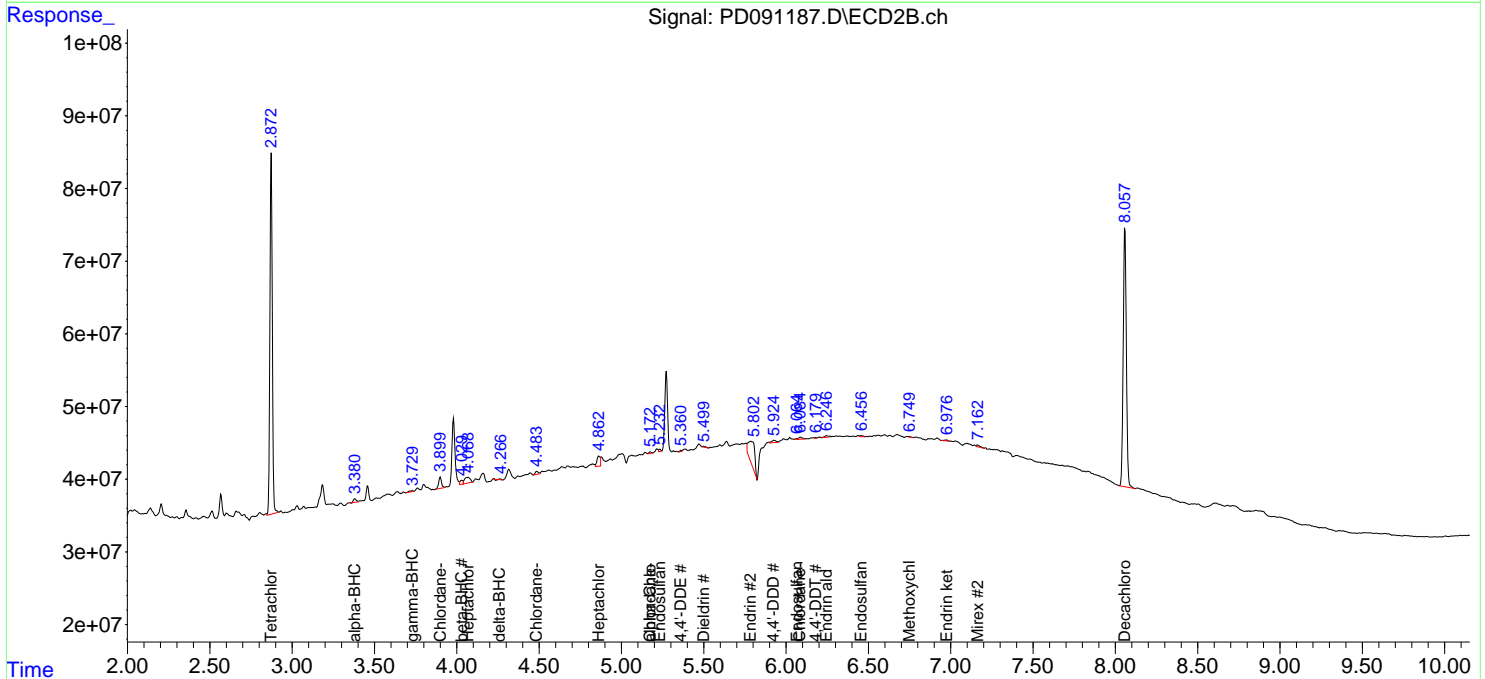
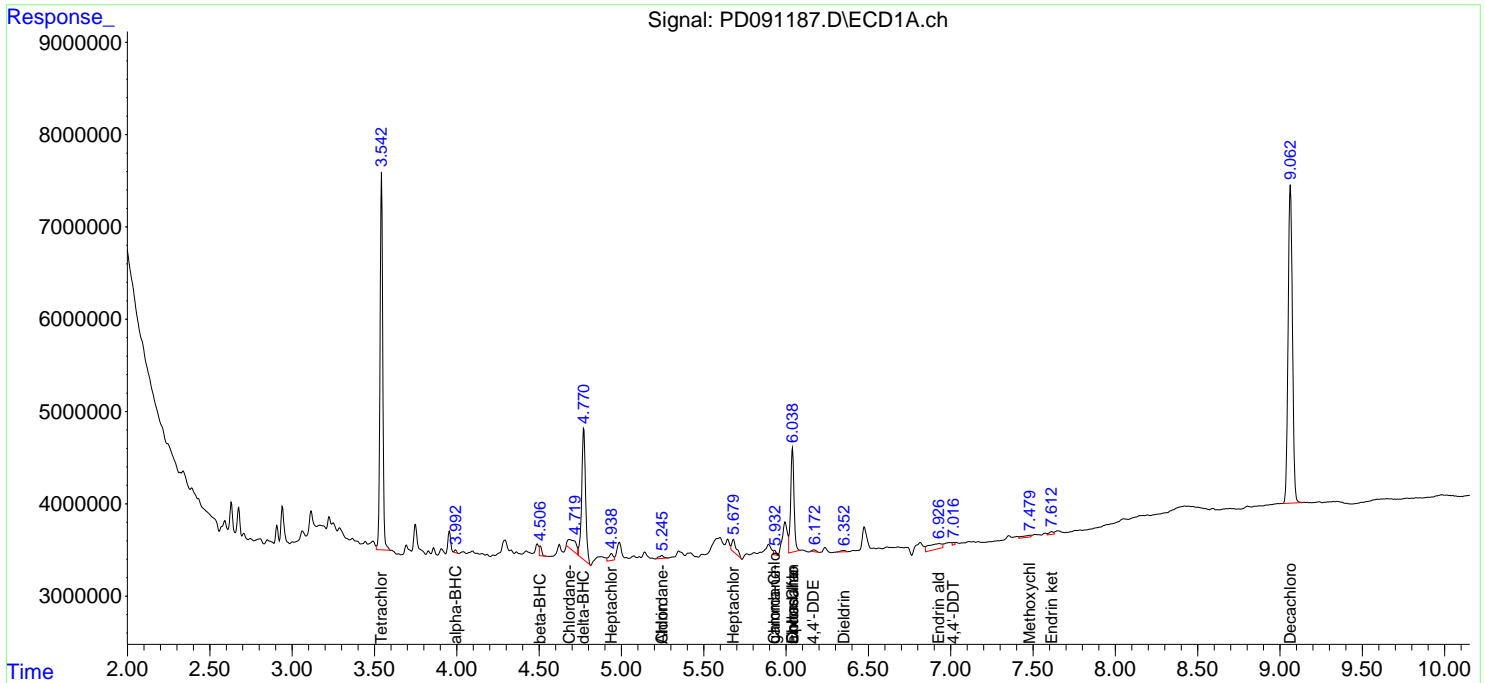
(f)=RT Delta > 1/2 Window (#)=Amounts differ by > 25% (m)=manual int.

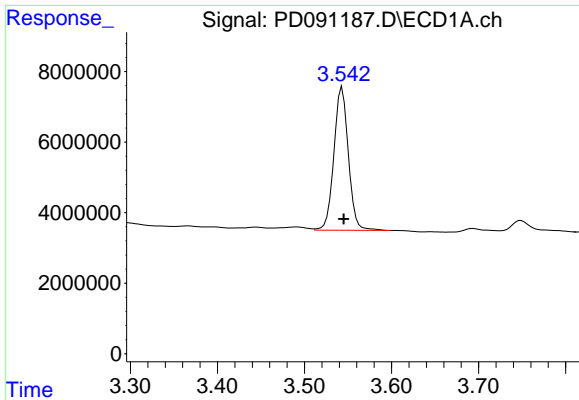
Data Path : Z:\pestpcbsrv\HPCHEM1\ECD_D\Data\PD111425\
 Data File : PD091187.D
 Signal(s) : Signal #1: ECD1A.ch Signal #2: ECD2B.ch
 Acq On : 14 Nov 2025 16:50
 Operator : AR\AJ
 Sample : Q3609-09
 Misc :
 ALS Vial : 27 Sample Multiplier: 1

Instrument :
 ECD_D
 ClientSampleId :
 AU-713-COMP-03

Integration File signal 1: autoint1.e
 Integration File signal 2: autoint2.e
 Quant Time: Nov 15 01:10:45 2025
 Quant Method : Z:\pestpcbsrv\HPCHEM1\ECD_D\Method\PD101725.M
 Quant Title : GC Extractables
 QLast Update : Fri Oct 17 17:43:28 2025
 Response via : Initial Calibration
 Integrator: ChemStation

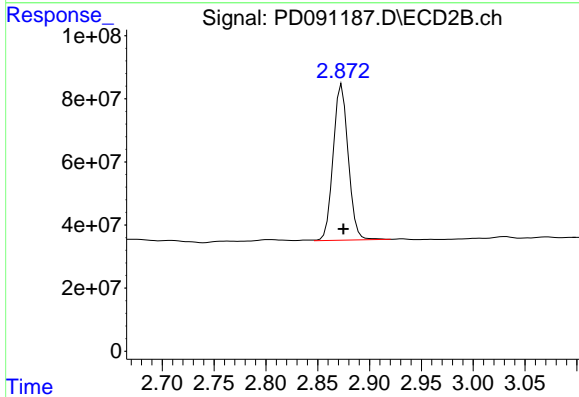
Volume Inj. : 1 µl
 Signal #1 Phase : ZB-MR1 Signal #2 Phase: ZB-MR2
 Signal #1 Info : 30M x 0.32mm x0.5 Signal #2 Info : 30M x 0.32mm x 0.25µm



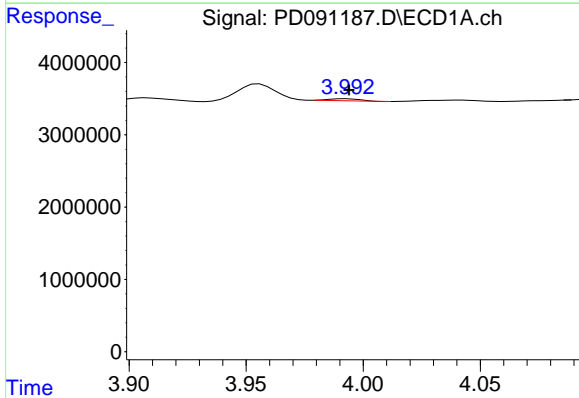


#1 Tetrachloro-m-xylene
 R.T.: 3.543 min
 Delta R.T.: -0.002 min
 Response: 46970994
 Conc: 15.08 ng/ml

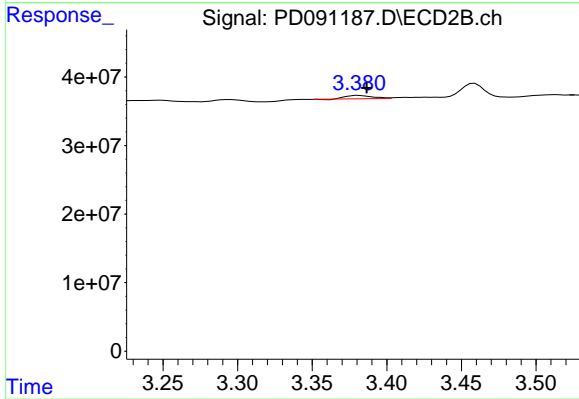
Instrument :
 ECD_D
 ClientSampleId :
 AU-713-COMP-03



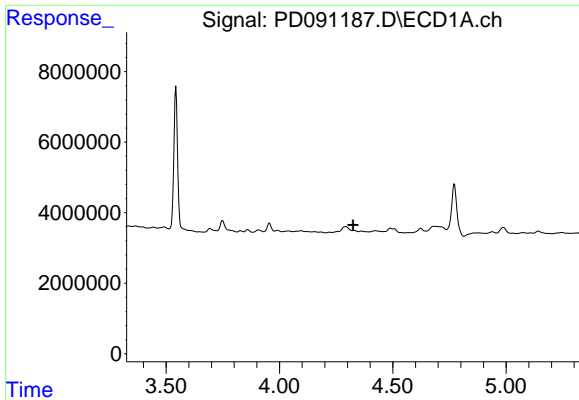
#1 Tetrachloro-m-xylene
 R.T.: 2.873 min
 Delta R.T.: -0.001 min
 Response: 498989538
 Conc: 16.76 ng/ml



#2 alpha-BHC
 R.T.: 3.993 min
 Delta R.T.: -0.001 min
 Response: 263608
 Conc: 0.04 ng/ml



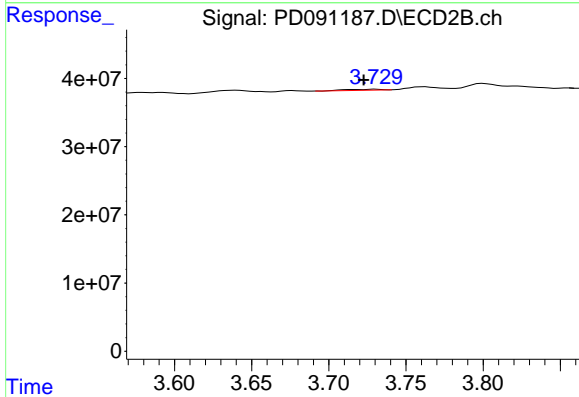
#2 alpha-BHC
 R.T.: 3.381 min
 Delta R.T.: -0.006 min
 Response: 6044825
 Conc: 0.12 ng/ml



#3 gamma-BHC (Lindane)

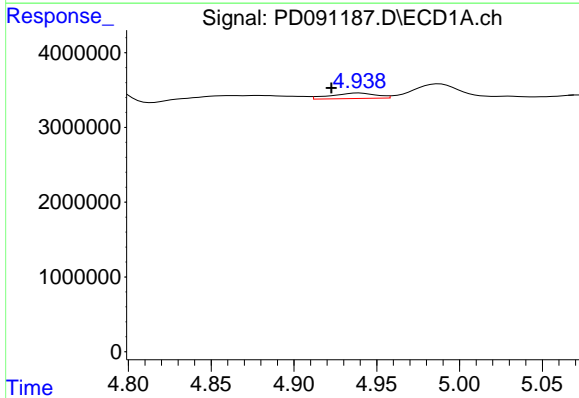
R.T.: 0.000 min
 Exp R.T.: 4.325 min
 Response: 0
 Conc: N.D.

Instrument :
 ECD_D
 ClientSampleId :
 AU-713-COMP-03



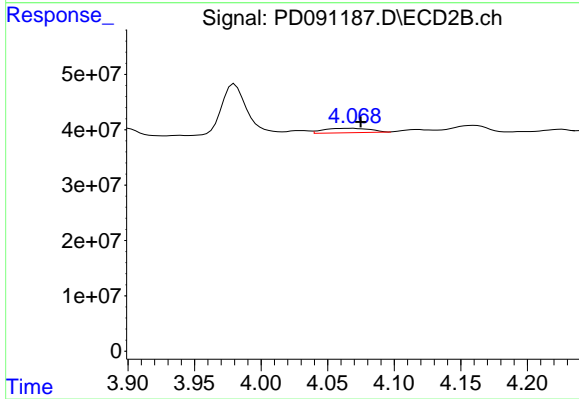
#3 gamma-BHC (Lindane)

R.T.: 3.730 min
 Delta R.T.: 0.008 min
 Response: 2310465
 Conc: 0.05 ng/ml



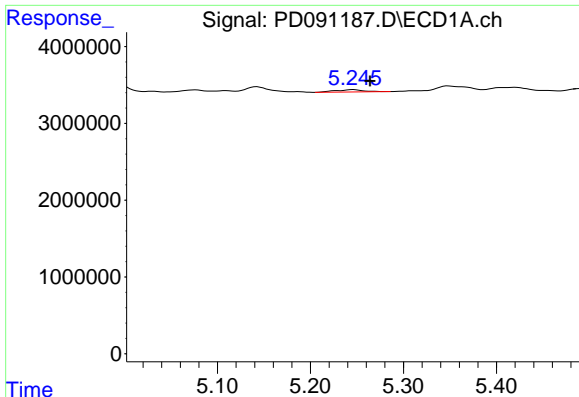
#4 Heptachlor

R.T.: 4.939 min
 Delta R.T.: 0.017 min
 Response: 1391776
 Conc: 0.25 ng/ml



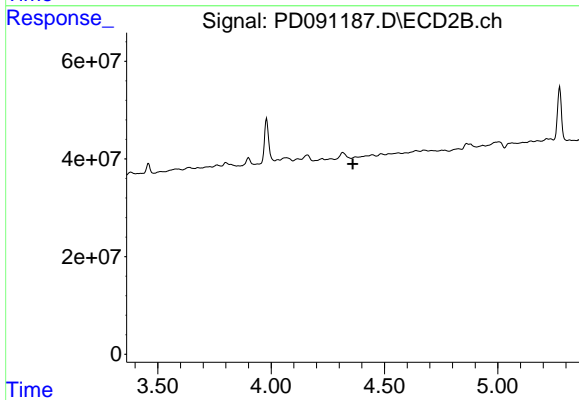
#4 Heptachlor

R.T.: 4.069 min
 Delta R.T.: -0.006 min
 Response: 19334040
 Conc: 0.43 ng/ml

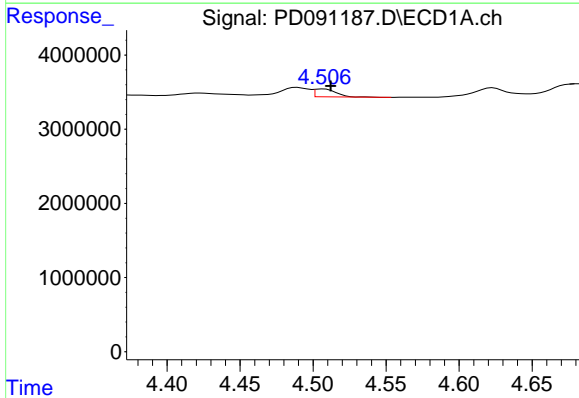


#5 Aldrin
 R.T.: 5.246 min
 Delta R.T.: -0.018 min
 Response: 625522
 Conc: 0.10 ng/ml

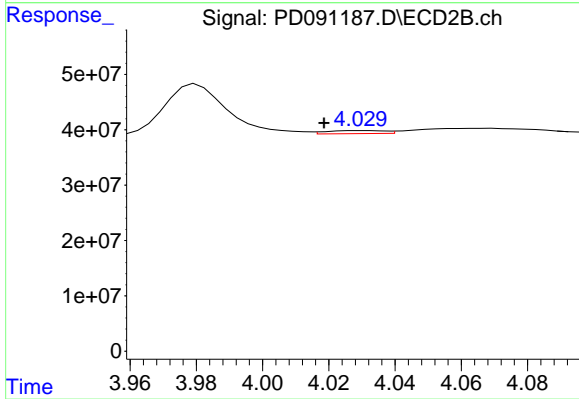
Instrument :
 ECD_D
 ClientSampleId :
 AU-713-COMP-03



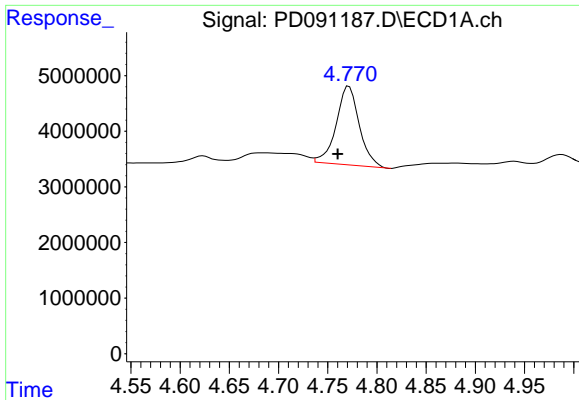
#5 Aldrin
 R.T.: 4.372 min
 Delta R.T.: 0.011 min
 Response: -2066403
 Conc: N.D.



#6 beta-BHC
 R.T.: 4.507 min
 Delta R.T.: -0.005 min
 Response: 1091563
 Conc: 0.42 ng/ml



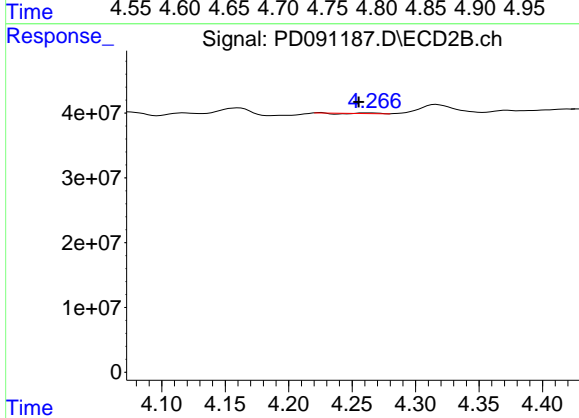
#6 beta-BHC
 R.T.: 4.030 min
 Delta R.T.: 0.012 min
 Response: 6710792
 Conc: 0.34 ng/ml



#7 delta-BHC

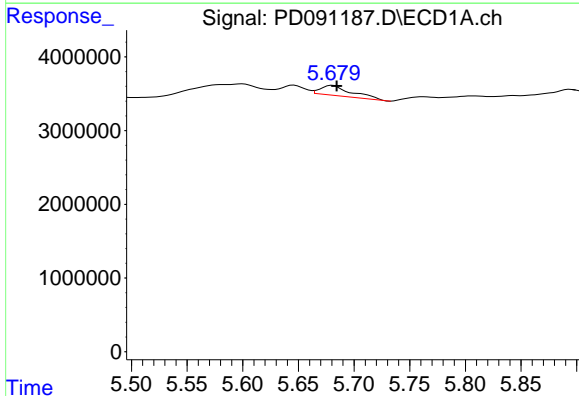
R.T.: 4.772 min
 Delta R.T.: 0.012 min
 Response: 23140494
 Conc: 3.42 ng/ml

Instrument :
 ECD_D
 ClientSampleId :
 AU-713-COMP-03



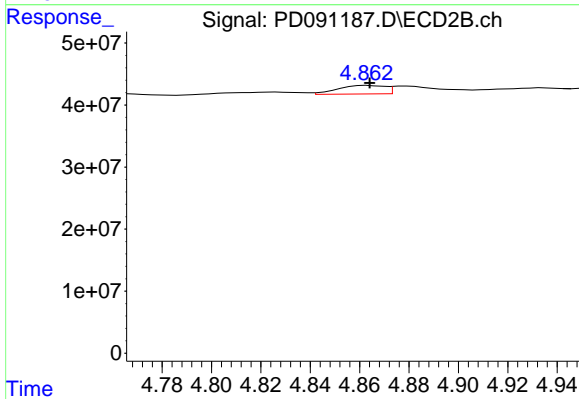
#7 delta-BHC

R.T.: 4.263 min
 Delta R.T.: 0.008 min
 Response: 77058
 Conc: 0.00 ng/ml



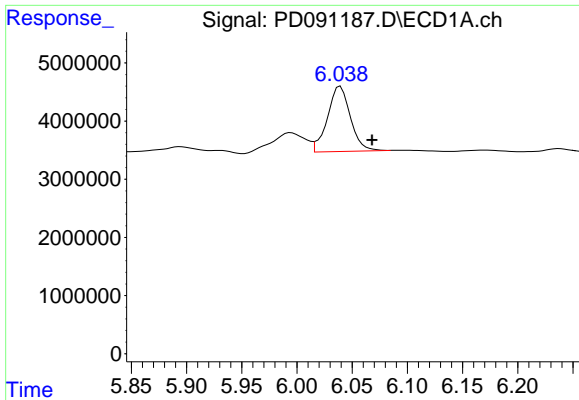
#8 Heptachlor epoxide

R.T.: 5.681 min
 Delta R.T.: -0.004 min
 Response: 2660554
 Conc: 0.46 ng/ml



#8 Heptachlor epoxide

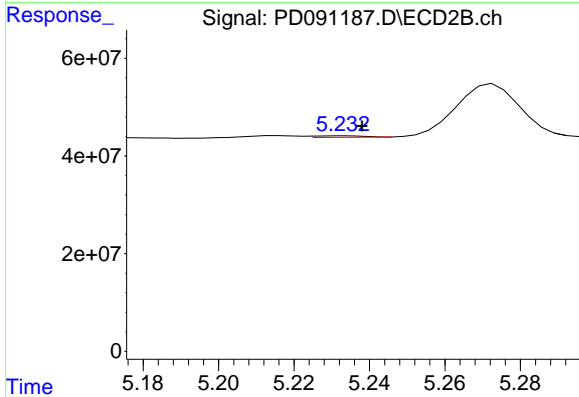
R.T.: 4.863 min
 Delta R.T.: -0.001 min
 Response: 18129727
 Conc: 0.43 ng/ml



#9 Endosulfan I

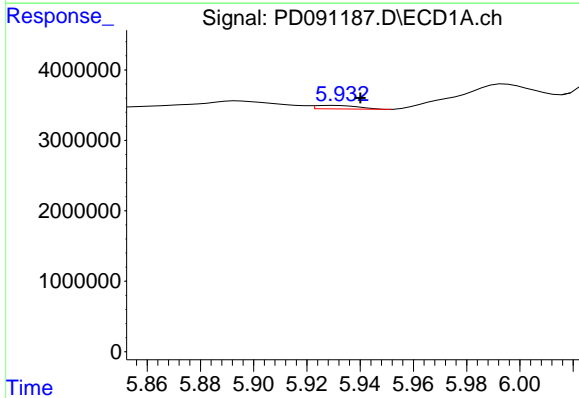
R.T.: 6.039 min
 Delta R.T.: -0.029 min
 Response: 16166085
 Conc: 2.92 ng/ml

Instrument :
 ECD_D
 ClientSampleId :
 AU-713-COMP-03



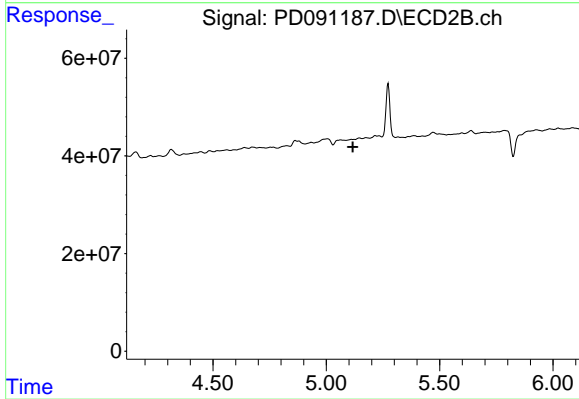
#9 Endosulfan I

R.T.: 5.234 min
 Delta R.T.: -0.004 min
 Response: 2580053
 Conc: 0.07 ng/ml



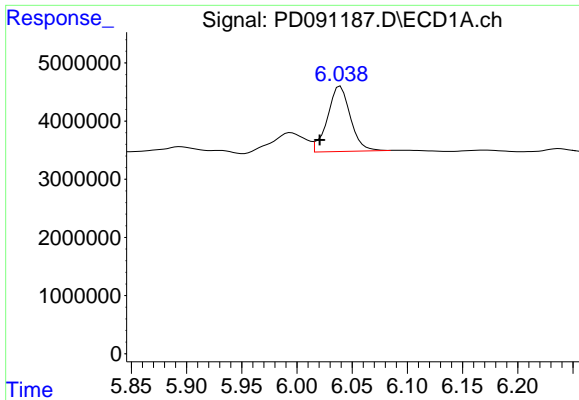
#10 gamma-Chlordane

R.T.: 5.930 min
 Delta R.T.: -0.010 min
 Response: 549349
 Conc: 0.09 ng/ml



#10 gamma-Chlordane

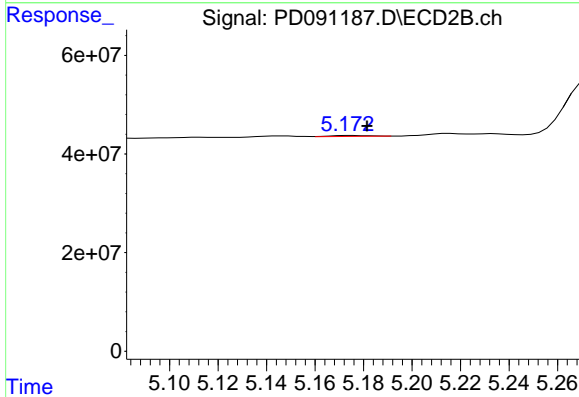
R.T.: 5.111 min
 Delta R.T.: -0.005 min
 Response: -902958
 Conc: N.D.



#11 alpha-Chlordane

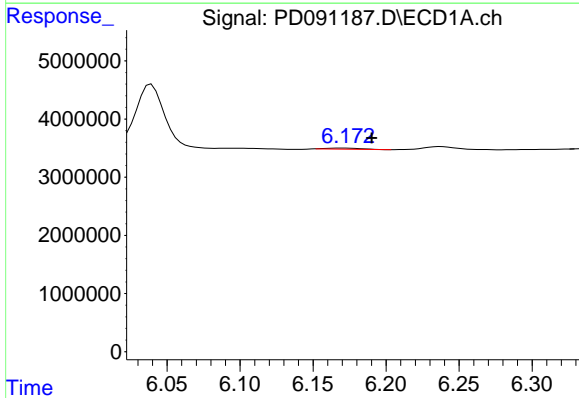
R.T.: 6.039 min
 Delta R.T.: 0.019 min
 Response: 16166085
 Conc: 2.62 ng/ml

Instrument :
 ECD_D
 ClientSampleId :
 AU-713-COMP-03



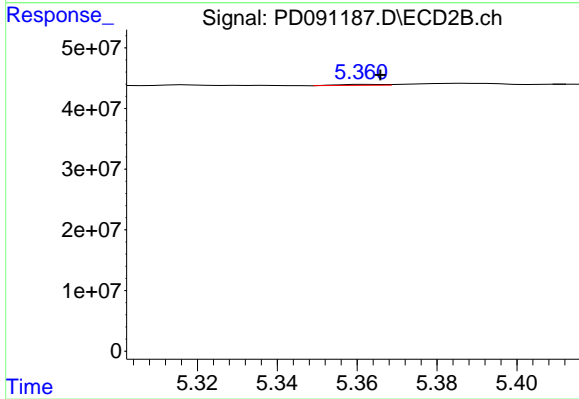
#11 alpha-Chlordane

R.T.: 5.175 min
 Delta R.T.: -0.007 min
 Response: 2057780
 Conc: 0.05 ng/ml



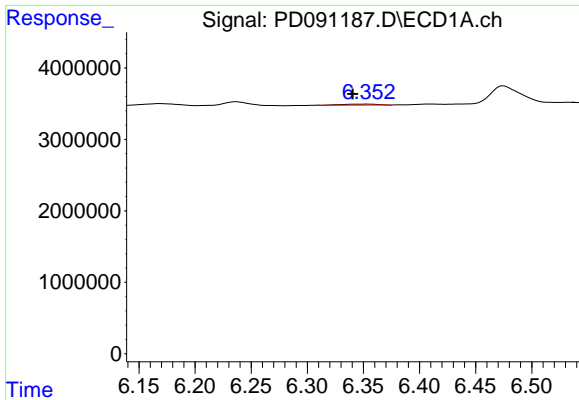
#12 4,4'-DDE

R.T.: 6.169 min
 Delta R.T.: -0.021 min
 Response: 307156
 Conc: 0.06 ng/ml



#12 4,4'-DDE

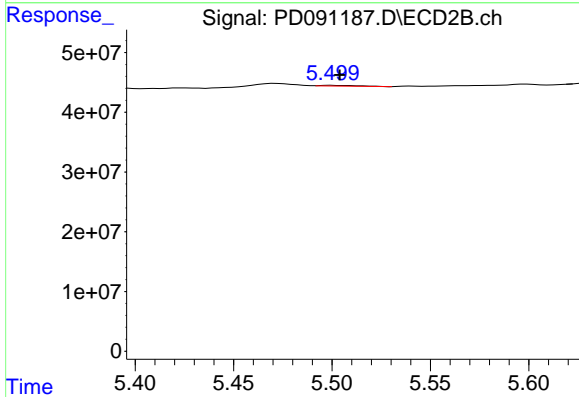
R.T.: 5.362 min
 Delta R.T.: -0.004 min
 Response: 1220585
 Conc: 0.03 ng/ml



#13 Dieldrin

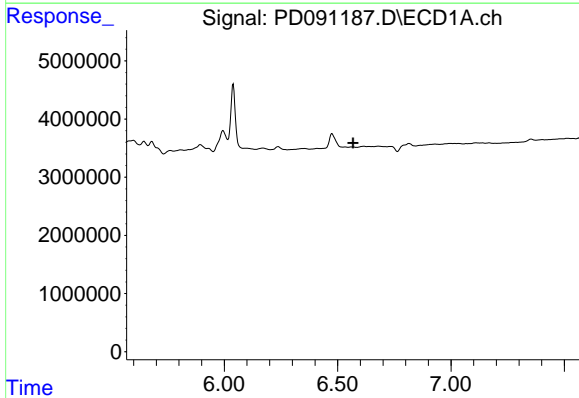
R.T.: 6.354 min
 Delta R.T.: 0.013 min
 Response: 316118
 Conc: 0.05 ng/ml

Instrument :
 ECD_D
 ClientSampleId :
 AU-713-COMP-03



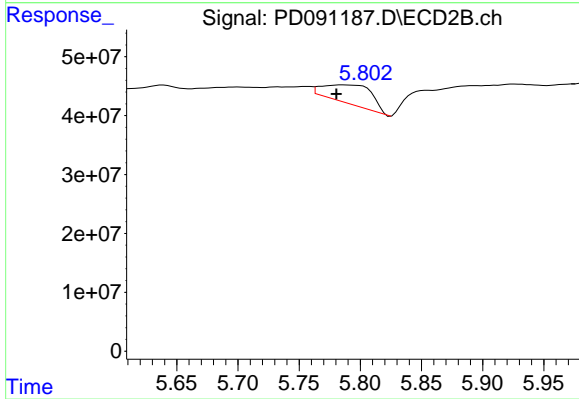
#13 Dieldrin

R.T.: 5.500 min
 Delta R.T.: -0.004 min
 Response: 1659855
 Conc: 0.04 ng/ml



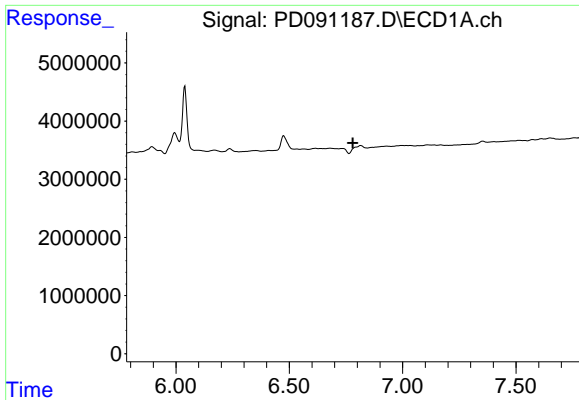
#14 Endrin

R.T.: 0.000 min
 Exp R.T. : 6.568 min
 Response: 0
 Conc: N.D.



#14 Endrin

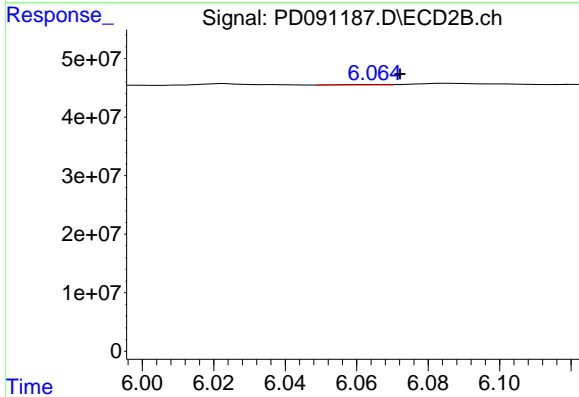
R.T.: 5.785 min
 Delta R.T.: 0.005 min
 Response: 88179165
 Conc: 2.18 ng/ml



#15 Endosulfan II

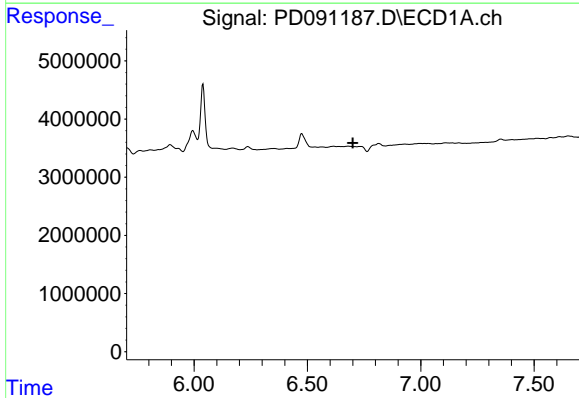
R.T.: 0.000 min
 Exp R.T. : 6.781 min
 Response: 0
 Conc: N.D.

Instrument :
 ECD_D
 ClientSampleId :
 AU-713-COMP-03



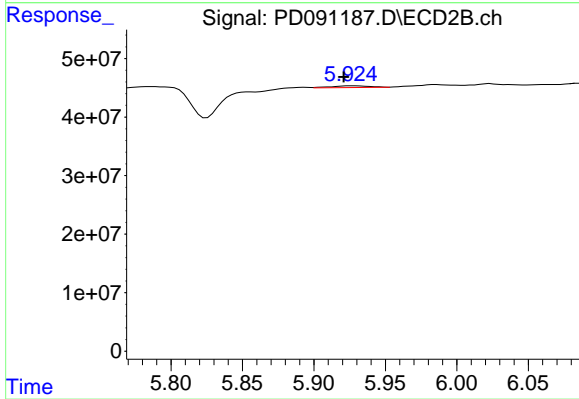
#15 Endosulfan II

R.T.: 6.066 min
 Delta R.T.: -0.007 min
 Response: 704561
 Conc: 0.02 ng/ml



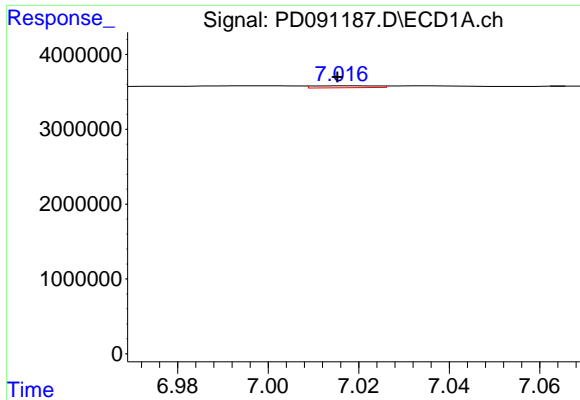
#16 4,4'-DDD

R.T.: 0.000 min
 Exp R.T. : 6.700 min
 Response: 0
 Conc: N.D.



#16 4,4'-DDD

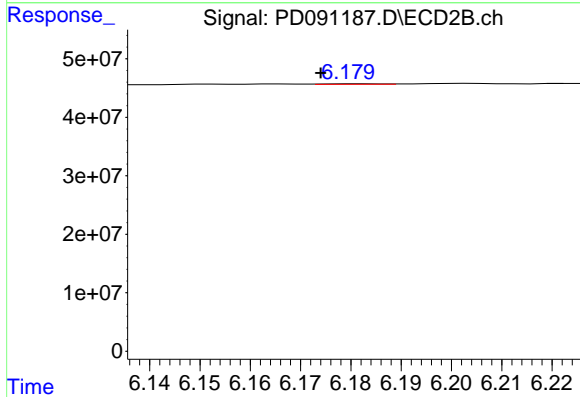
R.T.: 5.926 min
 Delta R.T.: 0.005 min
 Response: 5635828
 Conc: 0.15 ng/ml



#17 4,4'-DDT

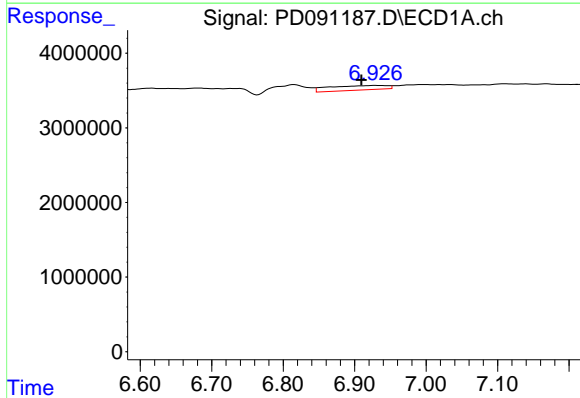
R.T.: 7.018 min
 Delta R.T.: 0.002 min
 Response: 245348
 Conc: 0.06 ng/ml

Instrument :
 ECD_D
 ClientSampleId :
 AU-713-COMP-03



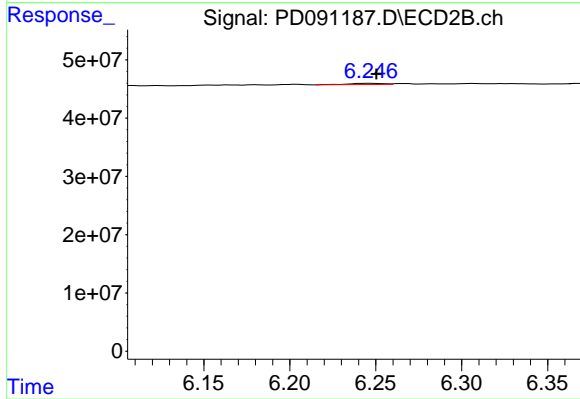
#17 4,4'-DDT

R.T.: 6.181 min
 Delta R.T.: 0.007 min
 Response: 647004
 Conc: 0.02 ng/ml



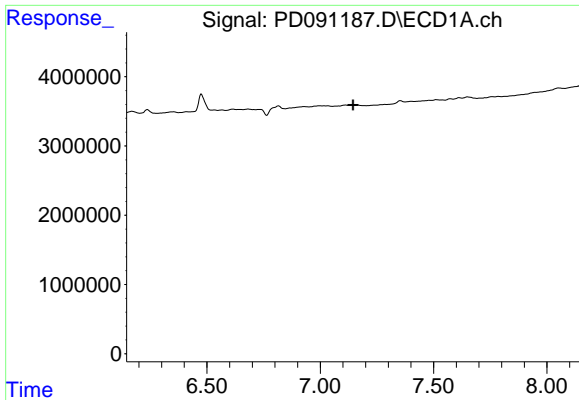
#18 Endrin aldehyde

R.T.: 6.928 min
 Delta R.T.: 0.018 min
 Response: 3468706
 Conc: 0.95 ng/ml



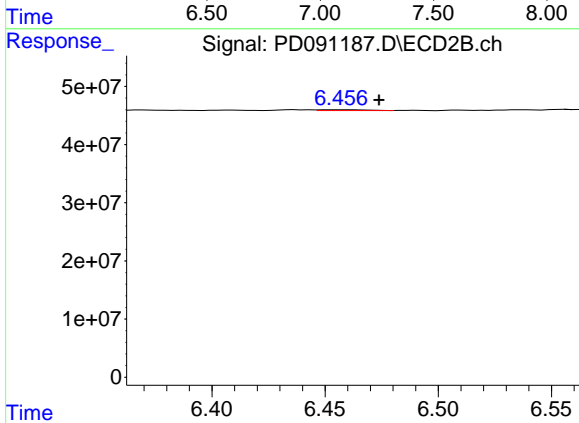
#18 Endrin aldehyde

R.T.: 6.247 min
 Delta R.T.: -0.003 min
 Response: 2997030
 Conc: 0.11 ng/ml

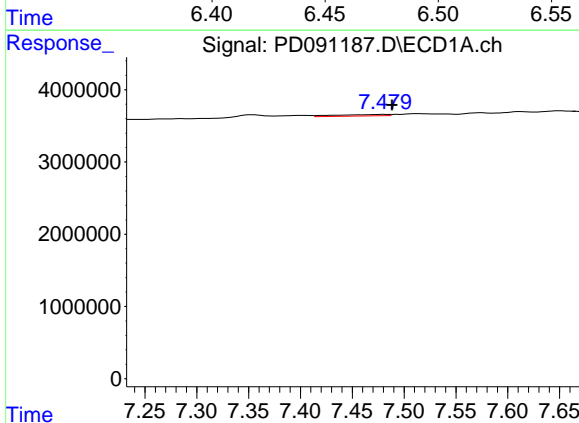


#19 Endosulfan Sulfate
 R.T.: 0.000 min
 Exp R.T.: 7.145 min
 Response: 0
 Conc: N.D.

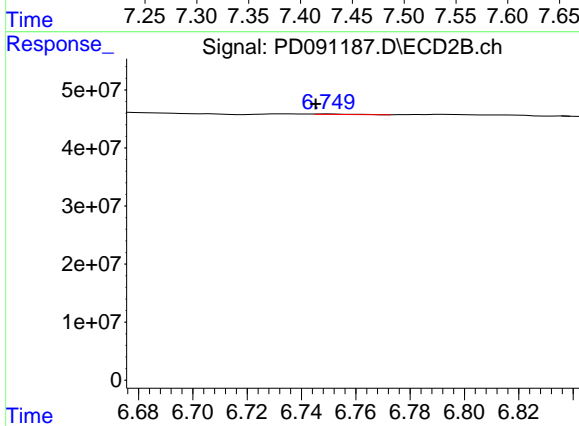
Instrument :
 ECD_D
 ClientSampleId :
 AU-713-COMP-03



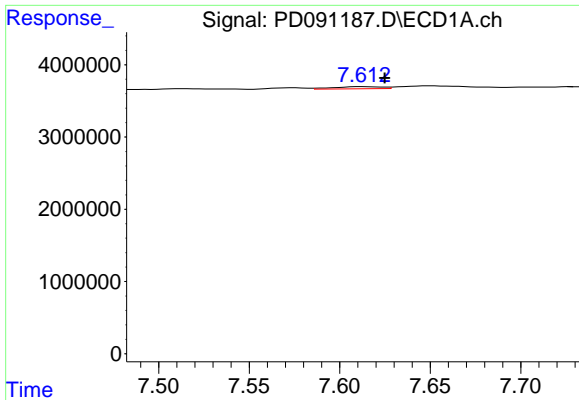
#19 Endosulfan Sulfate
 R.T.: 6.458 min
 Delta R.T.: -0.016 min
 Response: 2094689
 Conc: 0.06 ng/ml



#20 Methoxychlor
 R.T.: 7.480 min
 Delta R.T.: -0.008 min
 Response: 708253
 Conc: 0.33 ng/ml



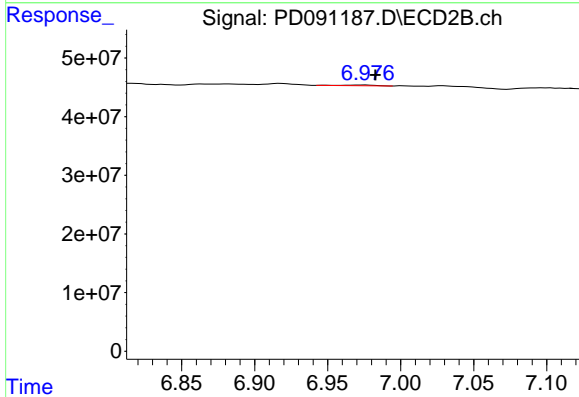
#20 Methoxychlor
 R.T.: 6.750 min
 Delta R.T.: 0.005 min
 Response: 834831
 Conc: 0.05 ng/ml



#21 Endrin ketone

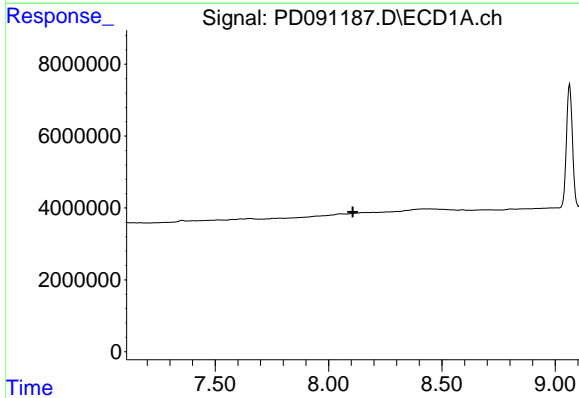
R.T.: 7.613 min
 Delta R.T.: -0.012 min
 Response: 539599
 Conc: 0.11 ng/ml

Instrument : ECD_D
 ClientSampleId : AU-713-COMP-03



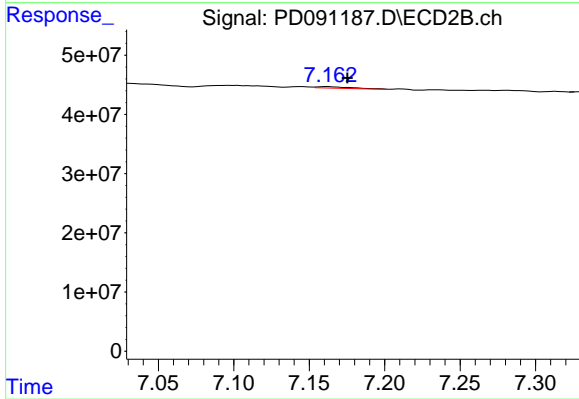
#21 Endrin ketone

R.T.: 6.976 min
 Delta R.T.: -0.007 min
 Response: 1949006
 Conc: 0.05 ng/ml



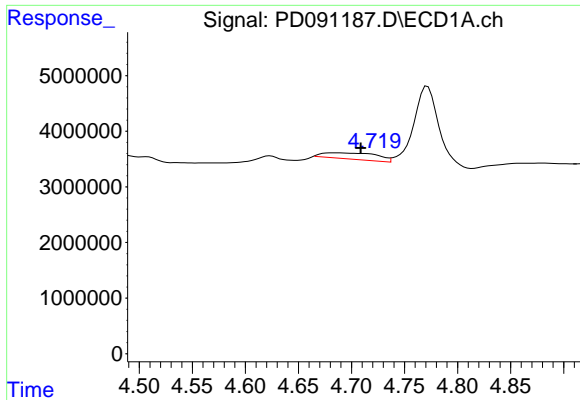
#22 Mirex

R.T.: 0.000 min
 Exp R.T. : 8.107 min
 Response: 0
 Conc: N.D.



#22 Mirex

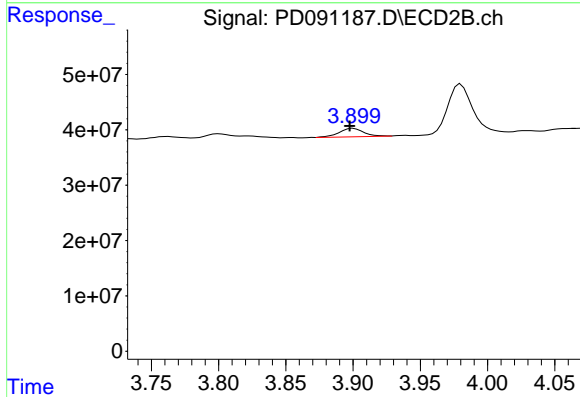
R.T.: 7.162 min
 Delta R.T.: -0.013 min
 Response: 4320032
 Conc: 0.17 ng/ml



#23 Chlordane-1

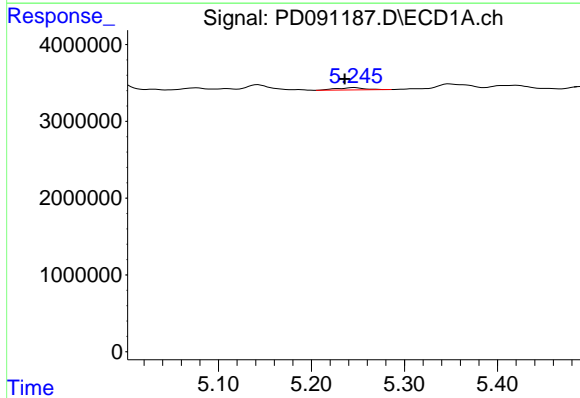
R.T.: 4.683 min
 Delta R.T.: -0.025 min
 Response: 4031674
 Conc: 21.33 ng/ml

Instrument :
 ECD_D
 ClientSampleId :
 AU-713-COMP-03



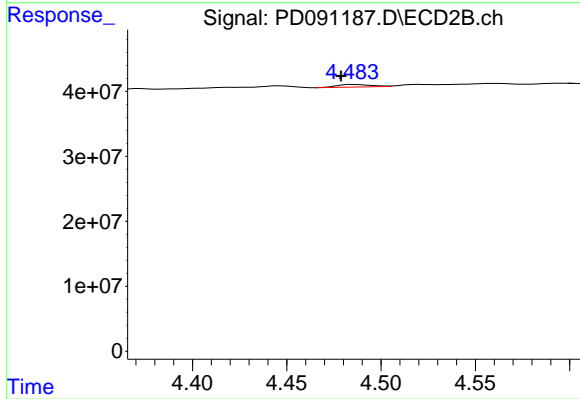
#23 Chlordane-1

R.T.: 3.900 min
 Delta R.T.: 0.003 min
 Response: 19212186
 Conc: 15.42 ng/ml



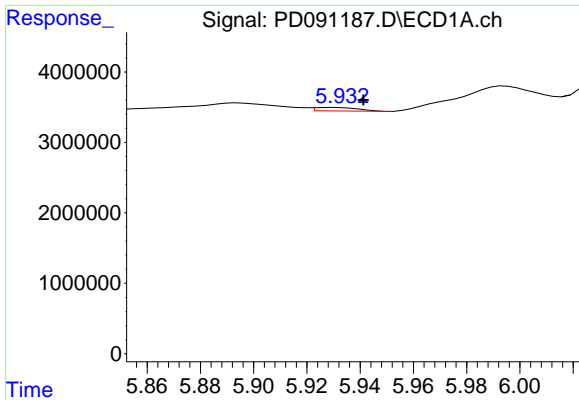
#24 Chlordane-2

R.T.: 5.246 min
 Delta R.T.: 0.011 min
 Response: 625522
 Conc: 3.24 ng/ml



#24 Chlordane-2

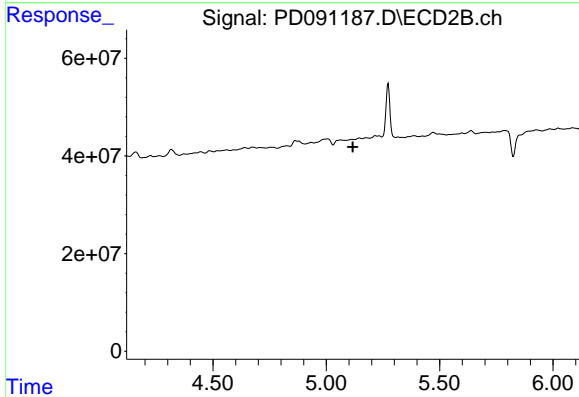
R.T.: 4.485 min
 Delta R.T.: 0.006 min
 Response: 5067837
 Conc: 3.88 ng/ml



#25 Chlordane-3

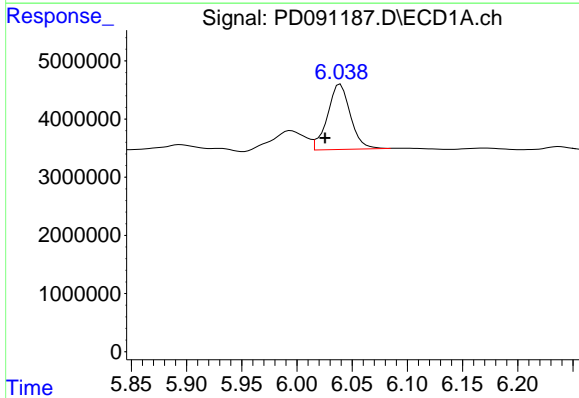
R.T.: 5.930 min
 Delta R.T.: -0.011 min
 Response: 549349
 Conc: 0.72 ng/ml

Instrument :
 ECD_D
 ClientSampleId :
 AU-713-COMP-03



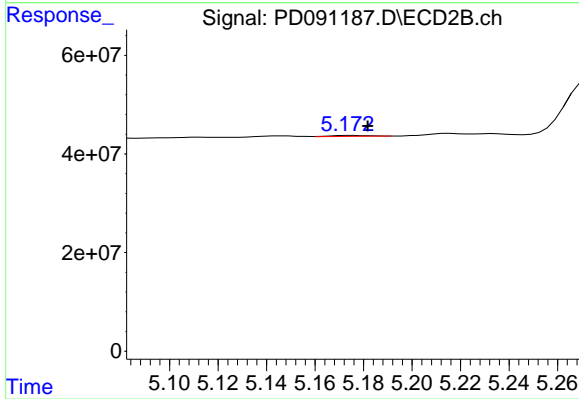
#25 Chlordane-3

R.T.: 5.111 min
 Delta R.T.: -0.006 min
 Response: -902958
 Conc: N.D.



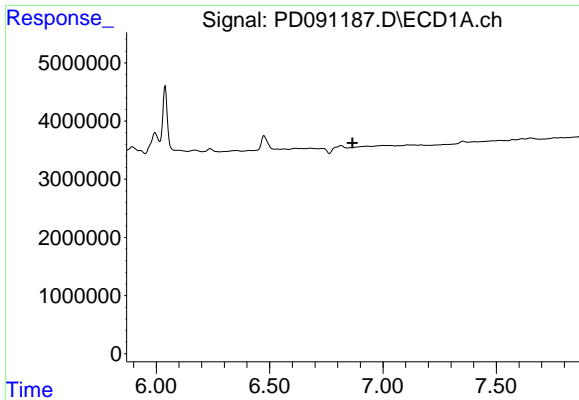
#26 Chlordane-4

R.T.: 6.039 min
 Delta R.T.: 0.014 min
 Response: 16166085
 Conc: 16.69 ng/ml



#26 Chlordane-4

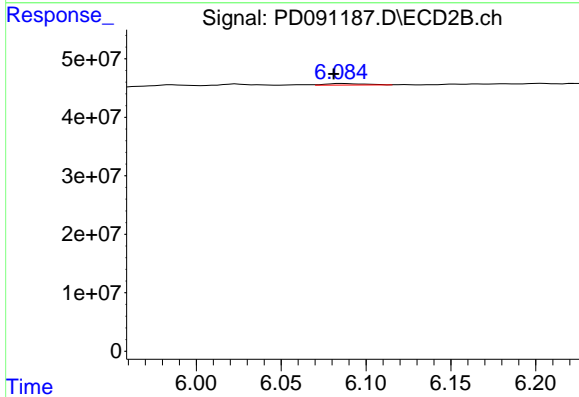
R.T.: 5.175 min
 Delta R.T.: -0.007 min
 Response: 2057780
 Conc: 0.62 ng/ml



#27 Chlordane-5

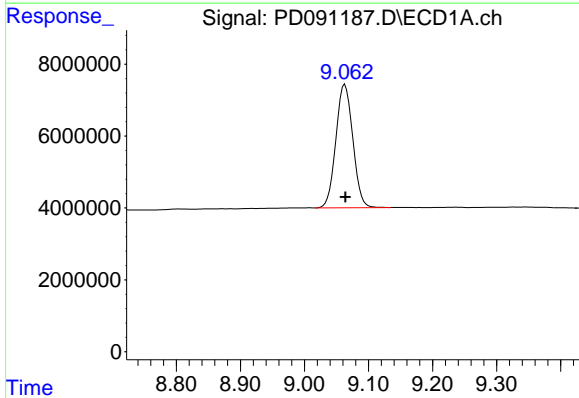
R.T.: 0.000 min
 Exp R.T.: 6.866 min
 Response: 0
 Conc: N.D.

Instrument :
 ECD_D
 ClientSampleId :
 AU-713-COMP-03



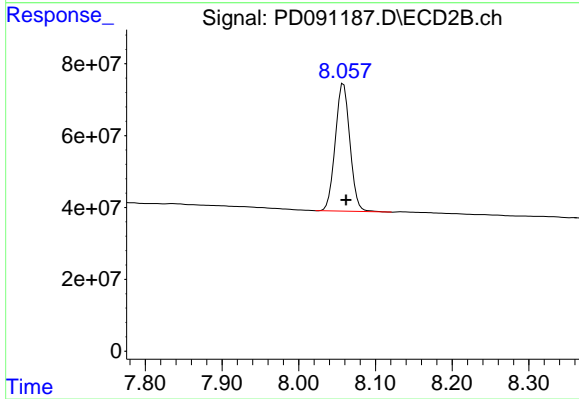
#27 Chlordane-5

R.T.: 6.086 min
 Delta R.T.: 0.005 min
 Response: 4144917
 Conc: 2.81 ng/ml



#28 Decachlorobiphenyl

R.T.: 9.063 min
 Delta R.T.: -0.001 min
 Response: 63049585
 Conc: 13.48 ng/ml



#28 Decachlorobiphenyl

R.T.: 8.058 min
 Delta R.T.: -0.003 min
 Response: 471083382
 Conc: 15.55 ng/ml