

Data Path : Z:\pestpcbsrv\HPCHEM1\ECD\_D\Data\PD111425\  
 Data File : PD091190.D  
 Signal(s) : Signal #1: ECD1A.ch Signal #2: ECD2B.ch  
 Acq On : 14 Nov 2025 17:31  
 Operator : AR\AJ  
 Sample : Q3624-01  
 Misc :  
 ALS Vial : 30 Sample Multiplier: 1

Instrument :  
 ECD\_D  
 ClientSampleId :  
 OK-02-11122025RE

Integration File signal 1: autoint1.e  
 Integration File signal 2: autoint2.e  
 Quant Time: Nov 15 01:11:12 2025  
 Quant Method : Z:\pestpcbsrv\HPCHEM1\ECD\_D\Method\PD101725.M  
 Quant Title : GC Extractables  
 QLast Update : Fri Oct 17 17:43:28 2025  
 Response via : Initial Calibration  
 Integrator: ChemStation

Volume Inj. : 1 µl  
 Signal #1 Phase : ZB-MR1 Signal #2 Phase: ZB-MR2  
 Signal #1 Info : 30M x 0.32mm x0.5 Signal #2 Info : 30M x 0.32mm x 0.25µm

	Compound	RT#1	RT#2	Resp#1	Resp#2	ng/ml	ng/ml
-----							
System Monitoring Compounds							
1)	SA Tetrachlo...	3.544	2.874	43399364	437.0E6	13.936	14.677
28)	SA Decachlor...	9.063	8.058	168.2E6	992.9E6	35.945	32.777
Target Compounds							
2)	A alpha-BHC	0.000	3.374	0	1939141	N.D.	0.038 #
3)	MA gamma-BHC...	4.329	0.000	1387784	0	0.204	N.D. #
4)	MA Heptachlor	4.947f	4.073	25391171	89103678	4.543	1.998 #
5)	MB Aldrin	0.000	4.355	0	22695692	N.D.	0.490 #
6)	B beta-BHC	4.542f	4.017	7554351	60537675	2.884	3.053
7)	B delta-BHC	4.772	4.267	4262884	8946512	0.630	0.187 #
8)	Heptachlo...	5.708f	4.867	13955804	22554489	2.411	0.529 #
9)	A Endosulfan I	0.000	5.251	0	55648353	N.D.	1.413 #
10)	B gamma-Chl...	5.939	5.115	26080007	179.9E6	4.397	4.002
11)	B alpha-Chl...	6.020	5.179	71129994	485.8E6	11.509	11.261
12)	B 4,4'-DDE	6.173f	5.364	8708369	56372486	1.635	1.286
13)	MA Dieldrin	6.358f	5.498	129845	103.4E6	0.022	2.341 #
14)	MA Endrin	6.567	5.782	655847	17851101	0.132	0.441 #
15)	B Endosulfa...	6.787	6.078	1192773	163.6E6	0.239	4.356 #
16)	A 4,4'-DDD	6.718f	5.917	2743349	5048088	0.677	0.139 #
17)	MA 4,4'-DDT	7.014	6.169	2129147	35508555	0.518	1.012 #
18)	B Endrin al...	6.926f	6.271f	1529374	18076004	0.418	0.653 #
19)	B Endosulfa...	7.161f	6.468	1001843	21549495	0.216	0.601 #
20)	A Methoxychlor	7.497	6.751	518538	516733	0.244	0.030 #
21)	B Endrin ke...	7.610	6.977	2712197	3986064	0.558	0.106 #
22)	Mirex	0.000	7.176	0	6631244	N.D.	0.258 #
23)	Chlordane-1	4.706	3.896	11922404	254.7E6	63.091	204.346 #
24)	Chlordane-2	5.229	4.479	104.9E6	743.9E6	543.232	570.257
25)	Chlordane-3	5.939	5.115	26080007	179.9E6	34.192	46.221 #
26)	Chlordane-4	6.020	5.179	71129994	485.8E6	73.414	145.389 #
27)	Chlordane-5	6.863	6.078	19264039	163.6E6	128.206	110.820

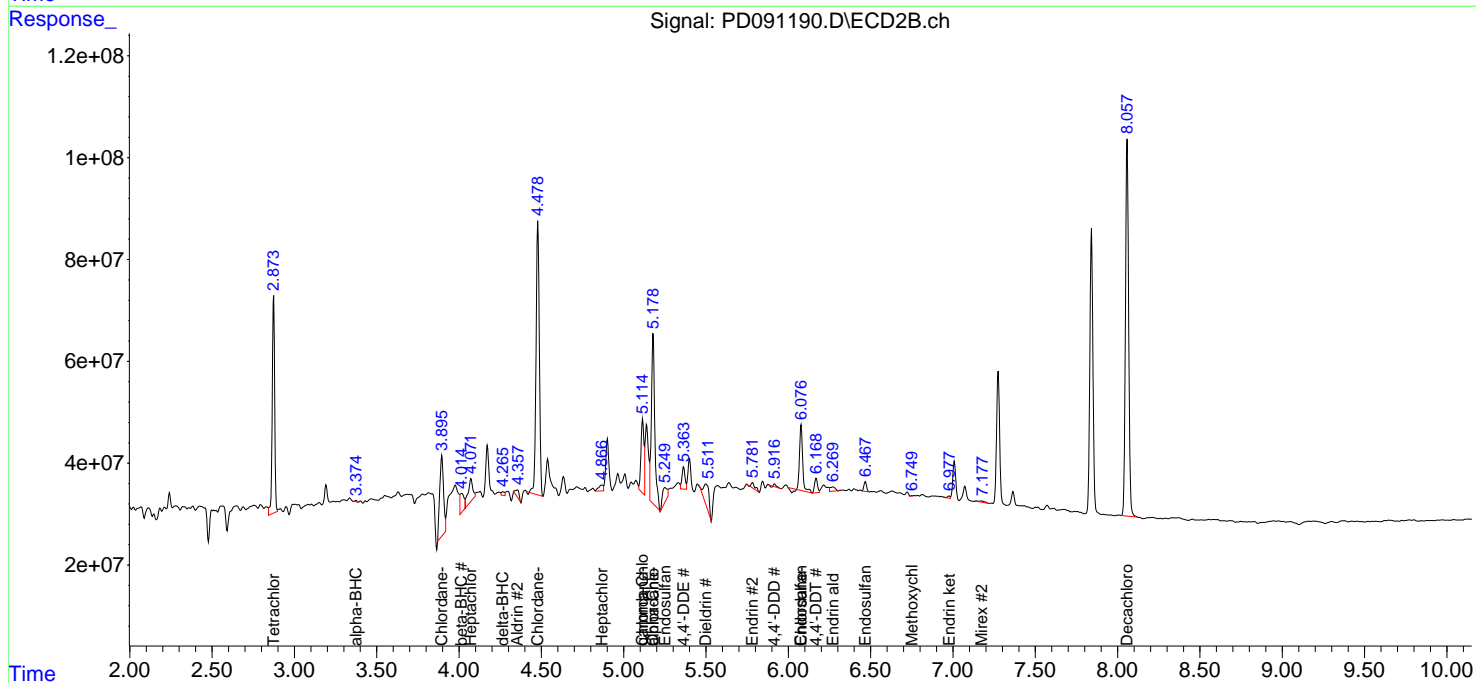
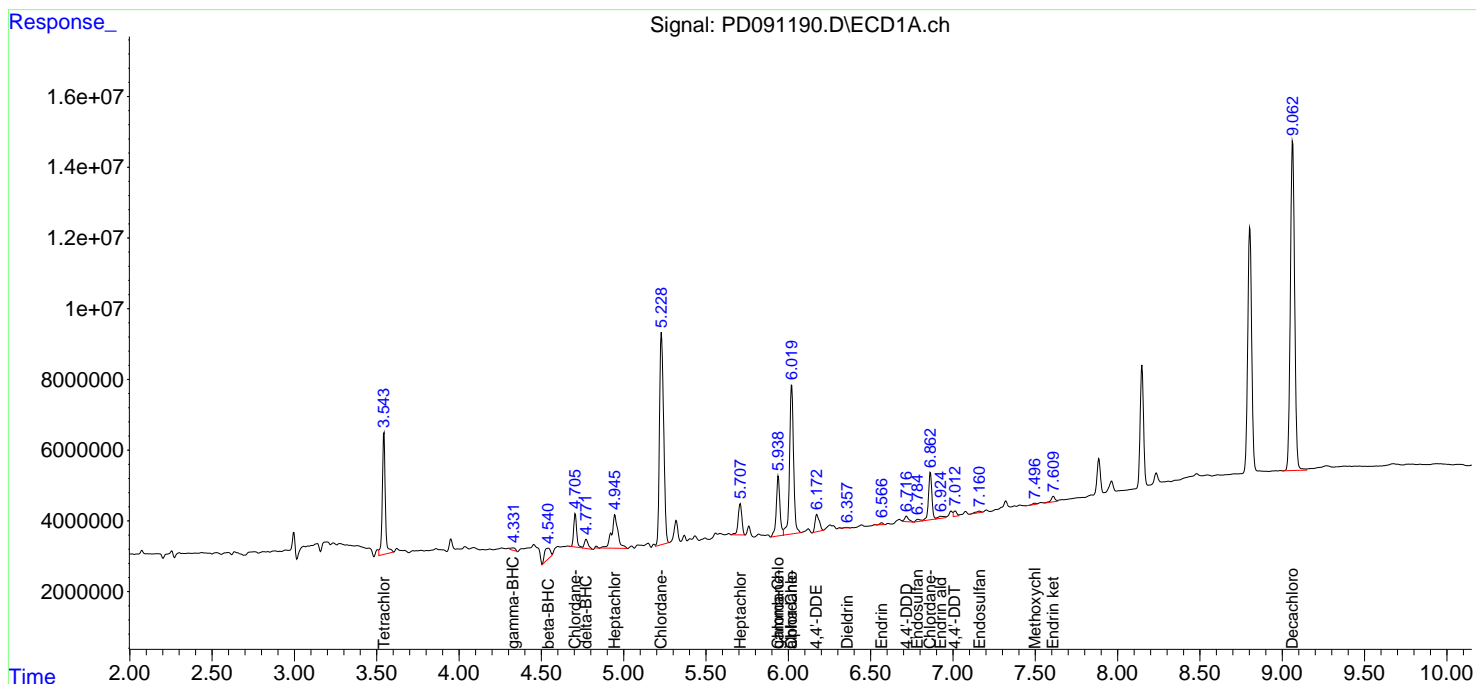
(f)=RT Delta > 1/2 Window (#)=Amounts differ by > 25% (m)=manual int.

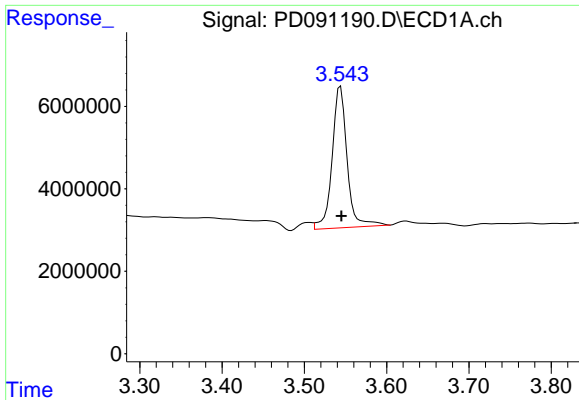
Data Path : Z:\pestpcbsrv\HPCHEM1\ECD\_D\Data\PD111425\  
 Data File : PD091190.D  
 Signal(s) : Signal #1: ECD1A.ch Signal #2: ECD2B.ch  
 Acq On : 14 Nov 2025 17:31  
 Operator : AR\AJ  
 Sample : Q3624-01  
 Misc :  
 ALS Vial : 30 Sample Multiplier: 1

Instrument :  
 ECD\_D  
 ClientSampleId :  
 OK-02-11122025RE

Integration File signal 1: autoint1.e  
 Integration File signal 2: autoint2.e  
 Quant Time: Nov 15 01:11:12 2025  
 Quant Method : Z:\pestpcbsrv\HPCHEM1\ECD\_D\Method\PD101725.M  
 Quant Title : GC Extractables  
 QLast Update : Fri Oct 17 17:43:28 2025  
 Response via : Initial Calibration  
 Integrator: ChemStation

Volume Inj. : 1 µl  
 Signal #1 Phase : ZB-MR1 Signal #2 Phase: ZB-MR2  
 Signal #1 Info : 30M x 0.32mm x0.5 Signal #2 Info : 30M x 0.32mm x 0.25µm

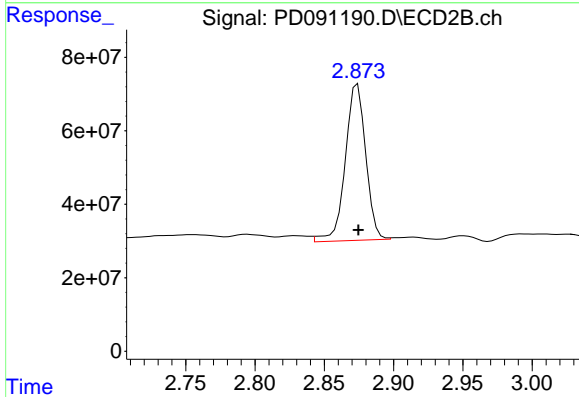




#1 Tetrachloro-m-xylene

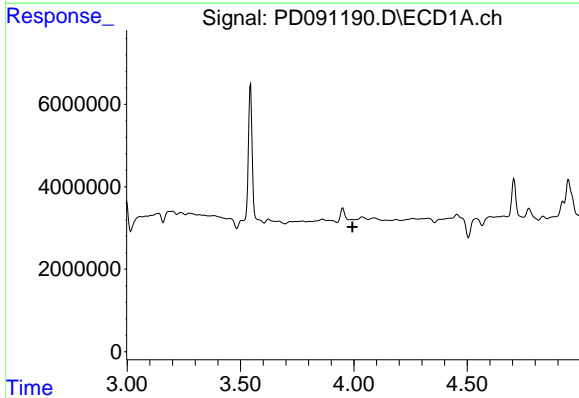
R.T.: 3.544 min  
 Delta R.T.: -0.001 min  
 Response: 43399364  
 Conc: 13.94 ng/ml

Instrument :  
 ECD\_D  
 ClientSampleId :  
 OK-02-11122025RE



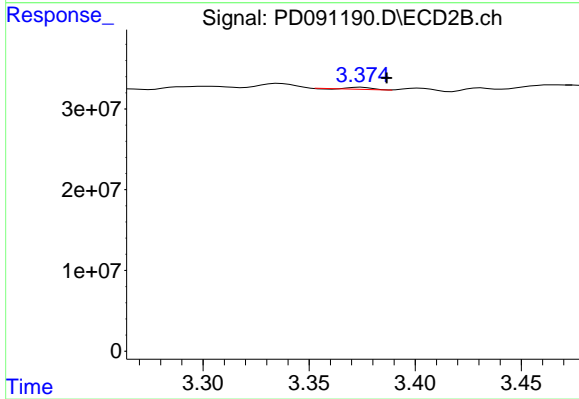
#1 Tetrachloro-m-xylene

R.T.: 2.874 min  
 Delta R.T.: 0.000 min  
 Response: 437039838  
 Conc: 14.68 ng/ml



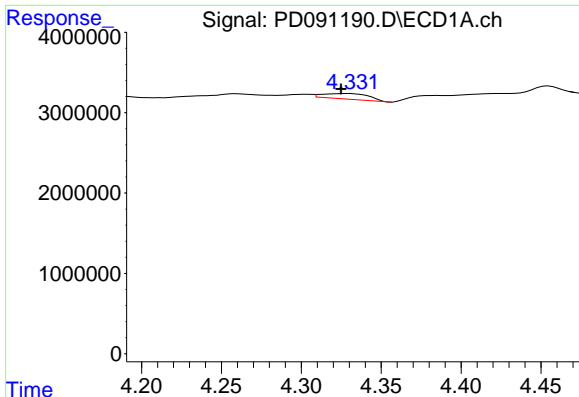
#2 alpha-BHC

R.T.: 0.000 min  
 Exp R.T. : 3.994 min  
 Response: 0  
 Conc: N.D.



#2 alpha-BHC

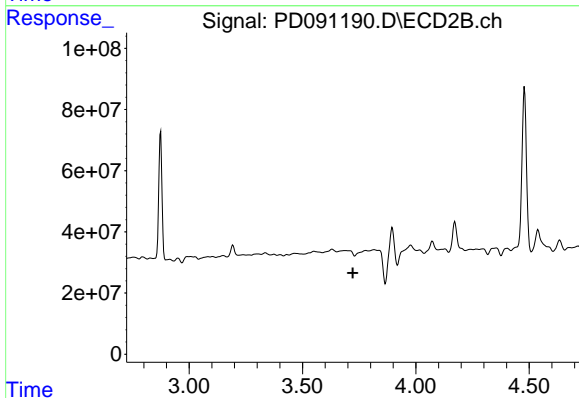
R.T.: 3.374 min  
 Delta R.T.: -0.012 min  
 Response: 1939141  
 Conc: 0.04 ng/ml



#3 gamma-BHC (Lindane)

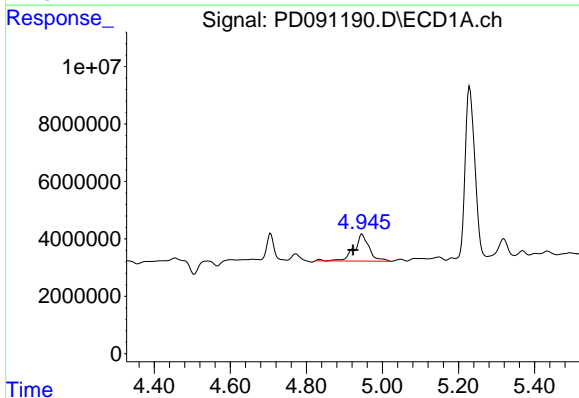
R.T.: 4.329 min  
 Delta R.T.: 0.005 min  
 Response: 1387784  
 Conc: 0.20 ng/ml

Instrument : ECD\_D  
 ClientSampleId : OK-02-11122025RE



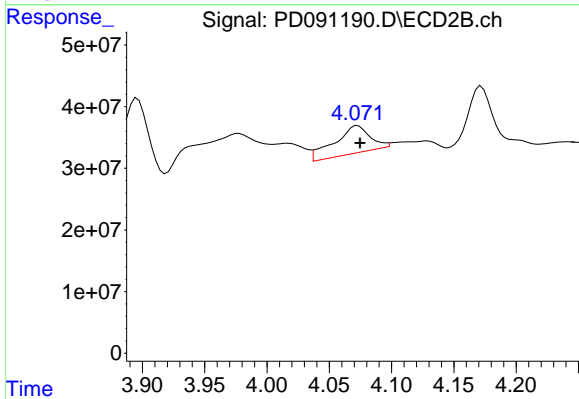
#3 gamma-BHC (Lindane)

R.T.: 0.000 min  
 Exp R.T. : 3.723 min  
 Response: 0  
 Conc: N.D.



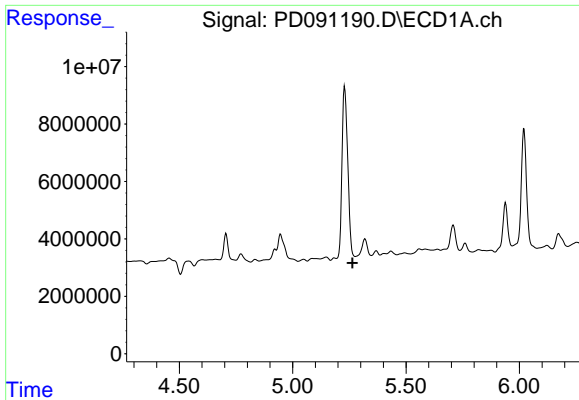
#4 Heptachlor

R.T.: 4.947 min  
 Delta R.T.: 0.024 min  
 Response: 25391171  
 Conc: 4.54 ng/ml



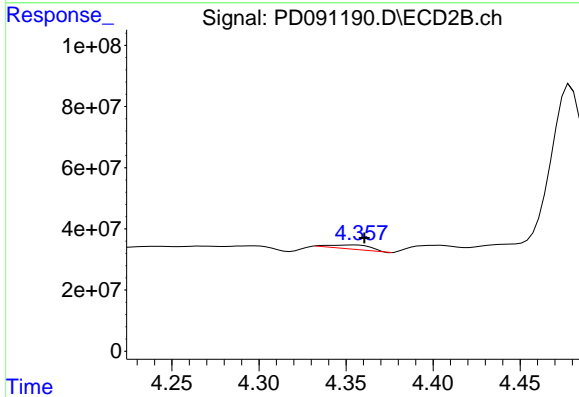
#4 Heptachlor

R.T.: 4.073 min  
 Delta R.T.: -0.002 min  
 Response: 89103678  
 Conc: 2.00 ng/ml

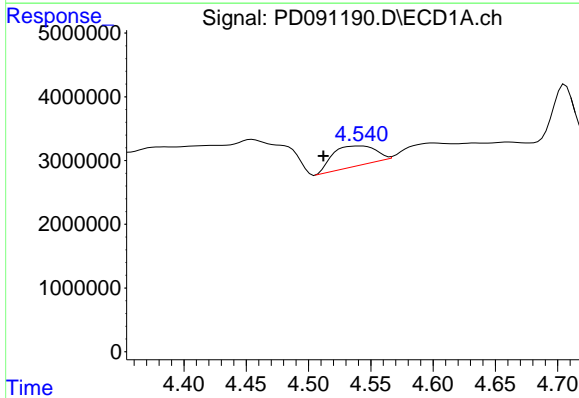


#5 Aldrin  
 R.T.: 0.000 min  
 Exp R.T.: 5.264 min  
 Response: 0  
 Conc: N.D.

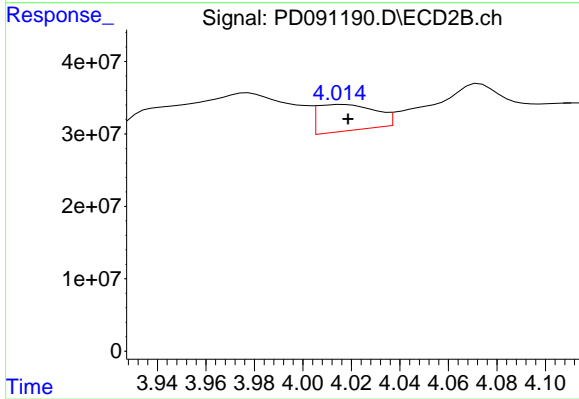
Instrument :  
 ECD\_D  
 ClientSampleId :  
 OK-02-11122025RE



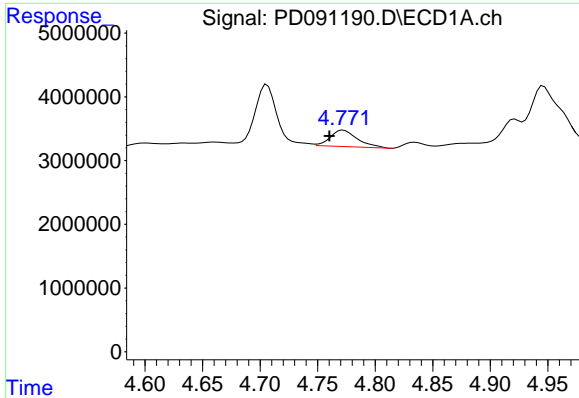
#5 Aldrin  
 R.T.: 4.355 min  
 Delta R.T.: -0.005 min  
 Response: 22695692  
 Conc: 0.49 ng/ml



#6 beta-BHC  
 R.T.: 4.542 min  
 Delta R.T.: 0.030 min  
 Response: 7554351  
 Conc: 2.88 ng/ml

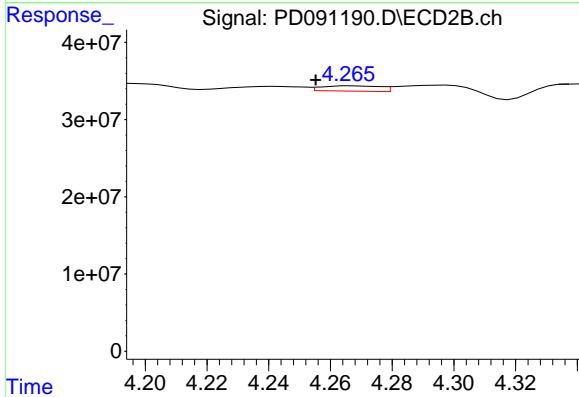


#6 beta-BHC  
 R.T.: 4.017 min  
 Delta R.T.: -0.002 min  
 Response: 60537675  
 Conc: 3.05 ng/ml

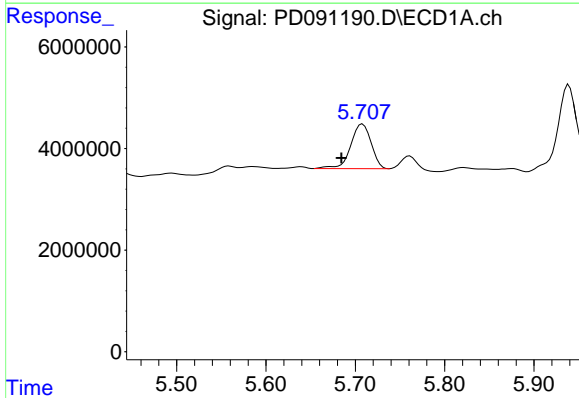


#7 delta-BHC  
 R.T.: 4.772 min  
 Delta R.T.: 0.012 min  
 Response: 4262884  
 Conc: 0.63 ng/ml

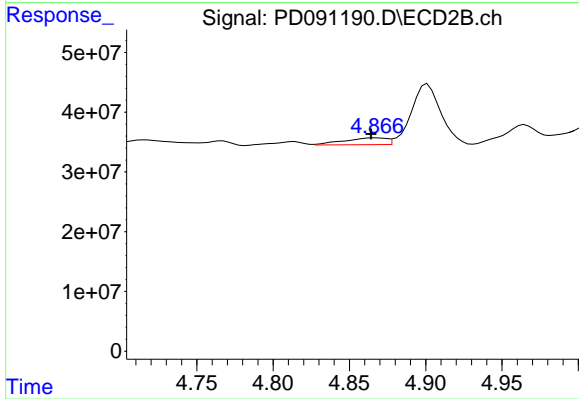
Instrument :  
 ECD\_D  
 ClientSampleId :  
 OK-02-11122025RE



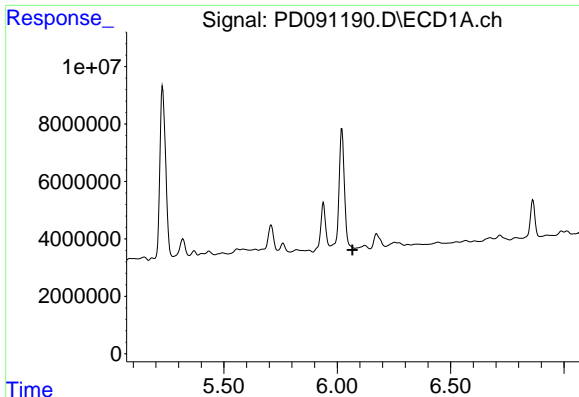
#7 delta-BHC  
 R.T.: 4.267 min  
 Delta R.T.: 0.011 min  
 Response: 8946512  
 Conc: 0.19 ng/ml



#8 Heptachlor epoxide  
 R.T.: 5.708 min  
 Delta R.T.: 0.024 min  
 Response: 13955804  
 Conc: 2.41 ng/ml



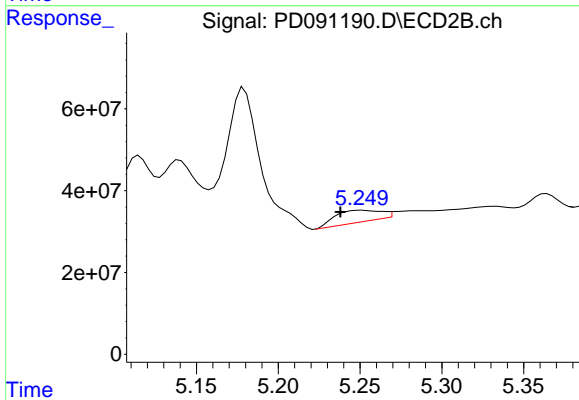
#8 Heptachlor epoxide  
 R.T.: 4.867 min  
 Delta R.T.: 0.003 min  
 Response: 22554489  
 Conc: 0.53 ng/ml



#9 Endosulfan I

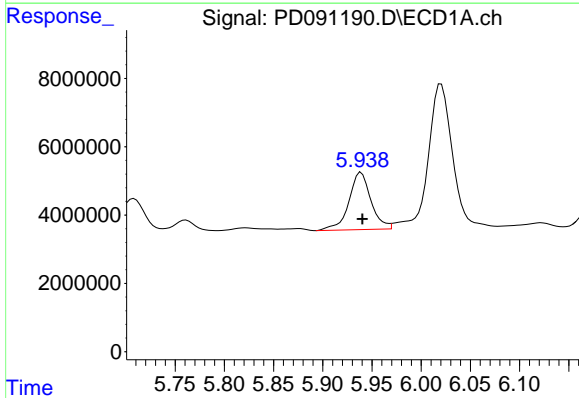
R.T.: 0.000 min  
 Exp R.T.: 6.068 min  
 Response: 0  
 Conc: N.D.

Instrument :  
 ECD\_D  
 ClientSampleId :  
 OK-02-11122025RE



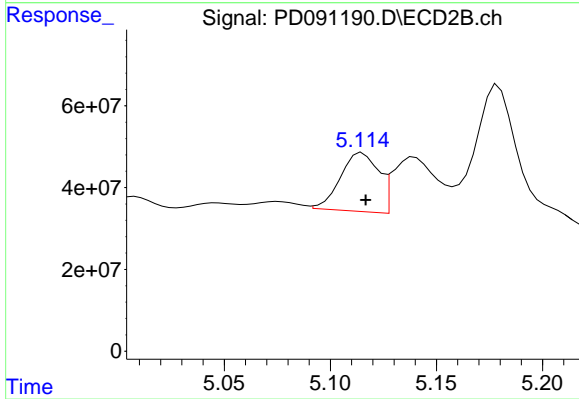
#9 Endosulfan I

R.T.: 5.251 min  
 Delta R.T.: 0.013 min  
 Response: 55648353  
 Conc: 1.41 ng/ml



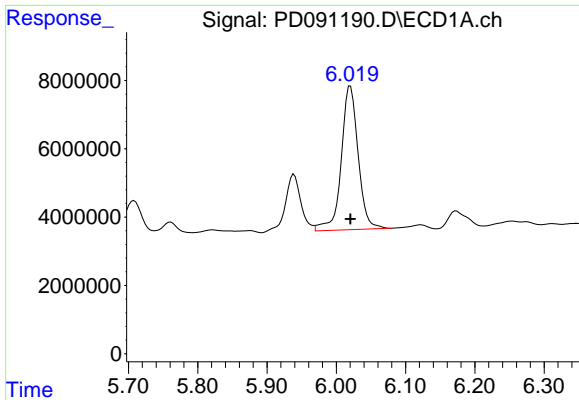
#10 gamma-Chlordane

R.T.: 5.939 min  
 Delta R.T.: -0.001 min  
 Response: 26080007  
 Conc: 4.40 ng/ml



#10 gamma-Chlordane

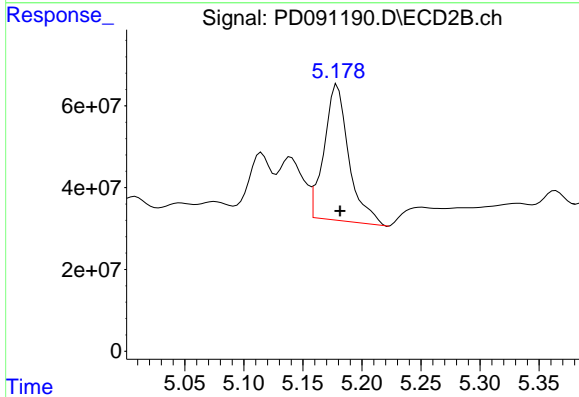
R.T.: 5.115 min  
 Delta R.T.: -0.002 min  
 Response: 179870560  
 Conc: 4.00 ng/ml



#11 alpha-Chlordane

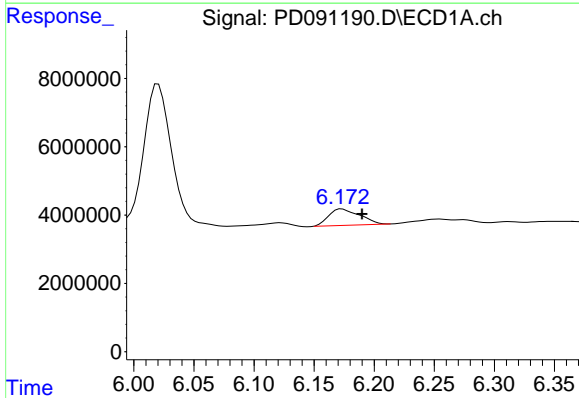
R.T.: 6.020 min  
 Delta R.T.: 0.000 min  
 Response: 71129994  
 Conc: 11.51 ng/ml

Instrument :  
 ECD\_D  
 ClientSampleId :  
 OK-02-11122025RE



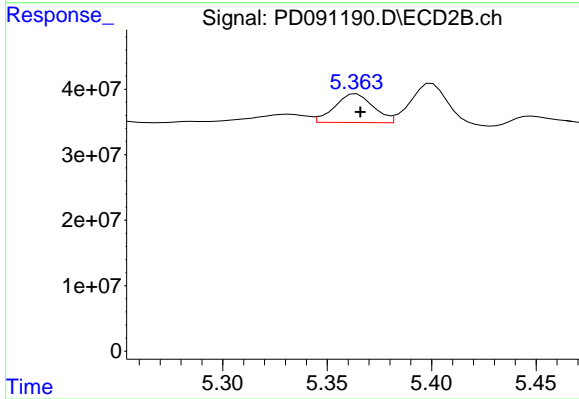
#11 alpha-Chlordane

R.T.: 5.179 min  
 Delta R.T.: -0.002 min  
 Response: 485777713  
 Conc: 11.26 ng/ml



#12 4,4'-DDE

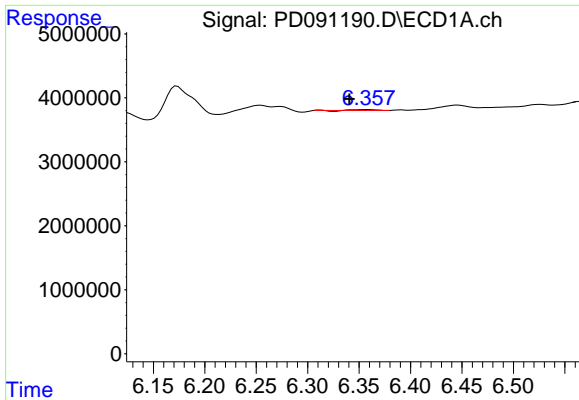
R.T.: 6.173 min  
 Delta R.T.: -0.017 min  
 Response: 8708369  
 Conc: 1.63 ng/ml



#12 4,4'-DDE

R.T.: 5.364 min  
 Delta R.T.: -0.002 min  
 Response: 56372486  
 Conc: 1.29 ng/ml

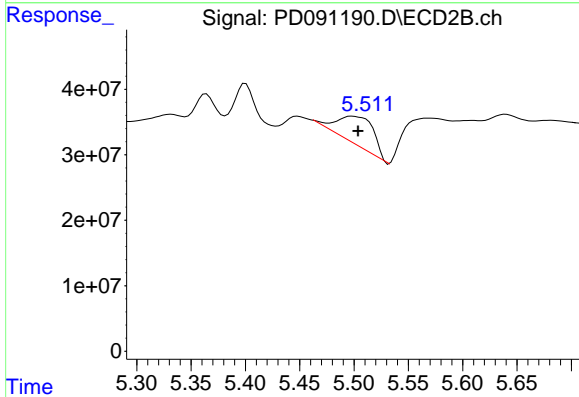




#13 Dieldrin

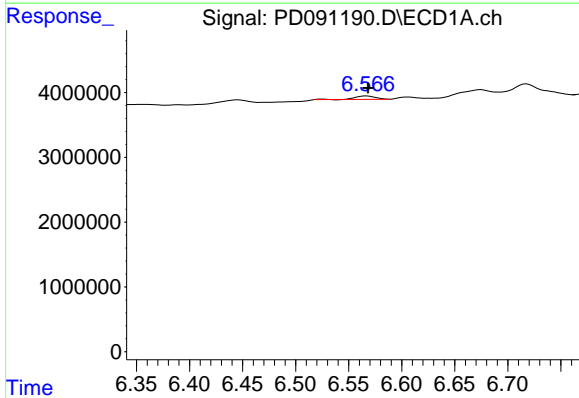
R.T.: 6.358 min  
 Delta R.T.: 0.017 min  
 Response: 129845  
 Conc: 0.02 ng/ml

Instrument :  
 ECD\_D  
 ClientSampleId :  
 OK-02-11122025RE



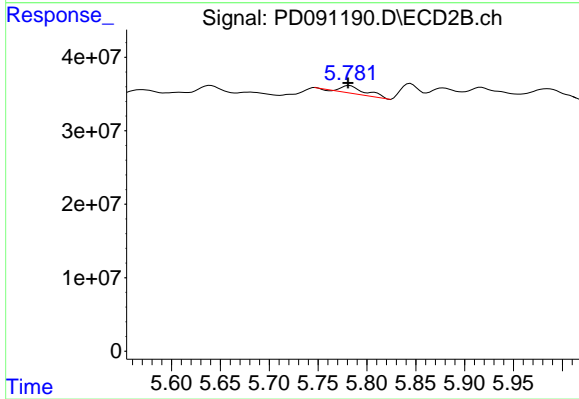
#13 Dieldrin

R.T.: 5.498 min  
 Delta R.T.: -0.006 min  
 Response: 103447639  
 Conc: 2.34 ng/ml



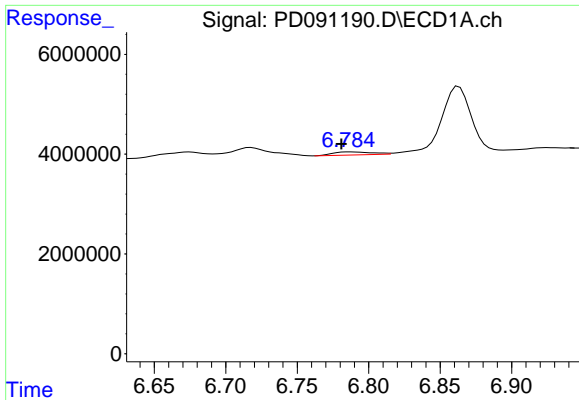
#14 Endrin

R.T.: 6.567 min  
 Delta R.T.: -0.001 min  
 Response: 655847  
 Conc: 0.13 ng/ml



#14 Endrin

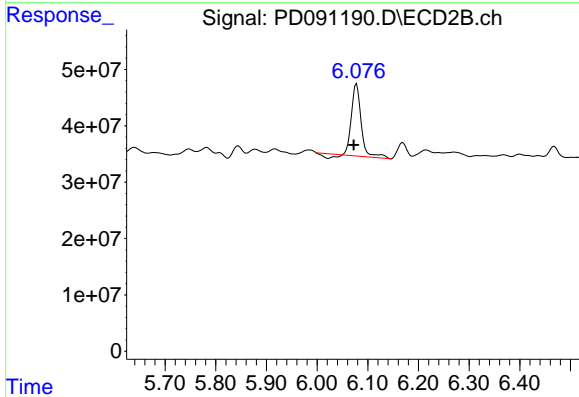
R.T.: 5.782 min  
 Delta R.T.: 0.002 min  
 Response: 17851101  
 Conc: 0.44 ng/ml



#15 Endosulfan II

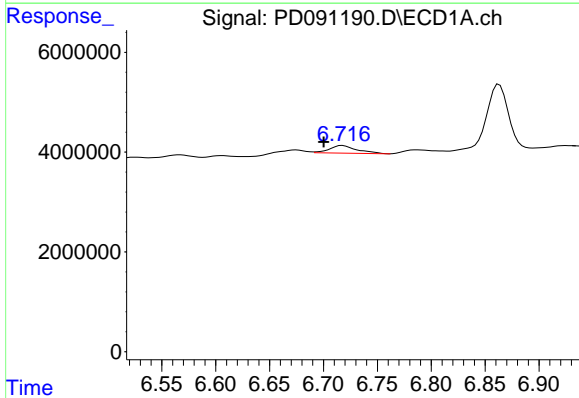
R.T.: 6.787 min  
 Delta R.T.: 0.006 min  
 Response: 1192773  
 Conc: 0.24 ng/ml

Instrument :  
 ECD\_D  
 ClientSampleId :  
 OK-02-11122025RE



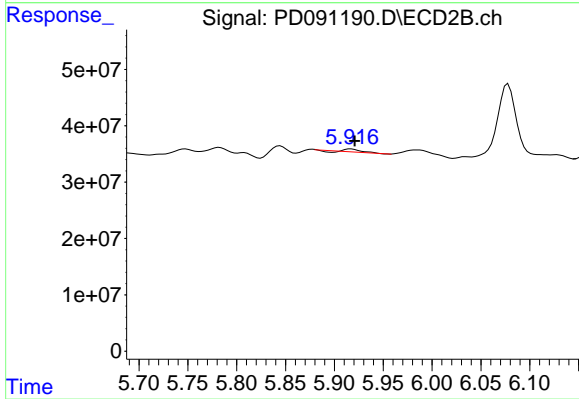
#15 Endosulfan II

R.T.: 6.078 min  
 Delta R.T.: 0.006 min  
 Response: 163574473  
 Conc: 4.36 ng/ml



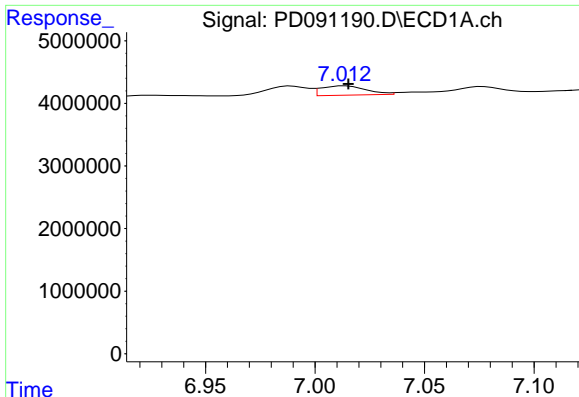
#16 4,4'-DDD

R.T.: 6.718 min  
 Delta R.T.: 0.018 min  
 Response: 2743349  
 Conc: 0.68 ng/ml



#16 4,4'-DDD

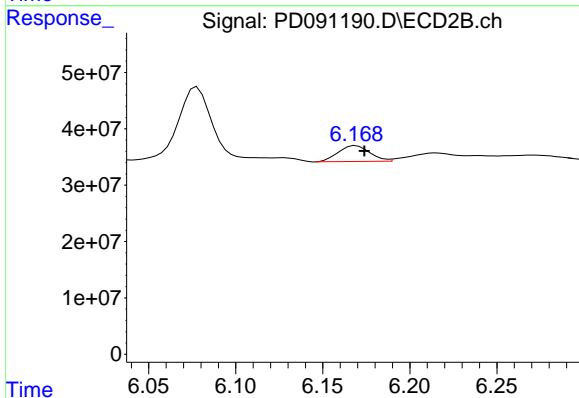
R.T.: 5.917 min  
 Delta R.T.: -0.004 min  
 Response: 5048088  
 Conc: 0.14 ng/ml



#17 4,4'-DDT

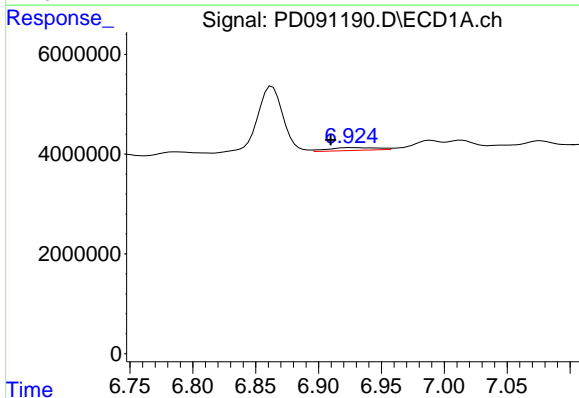
R.T.: 7.014 min  
 Delta R.T.: -0.002 min  
 Response: 2129147  
 Conc: 0.52 ng/ml

Instrument :  
 ECD\_D  
 ClientSampleId :  
 OK-02-11122025RE



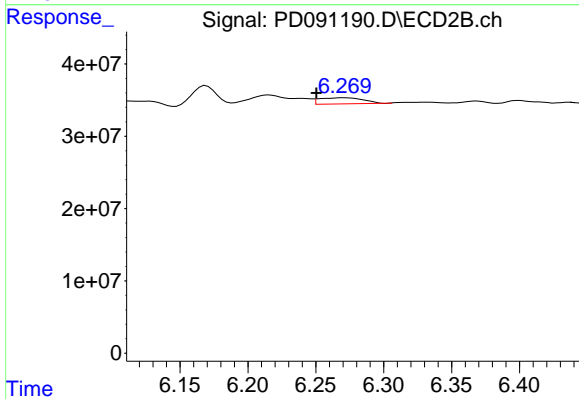
#17 4,4'-DDT

R.T.: 6.169 min  
 Delta R.T.: -0.005 min  
 Response: 35508555  
 Conc: 1.01 ng/ml



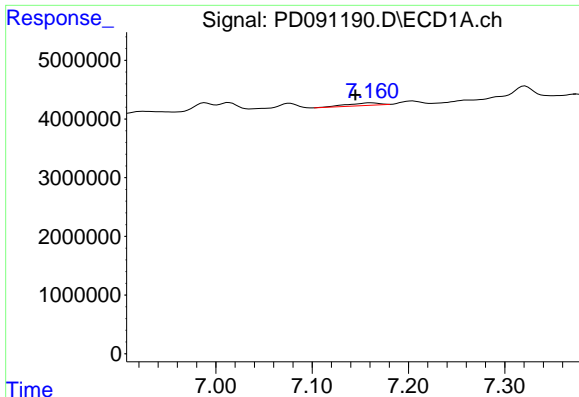
#18 Endrin aldehyde

R.T.: 6.926 min  
 Delta R.T.: 0.016 min  
 Response: 1529374  
 Conc: 0.42 ng/ml



#18 Endrin aldehyde

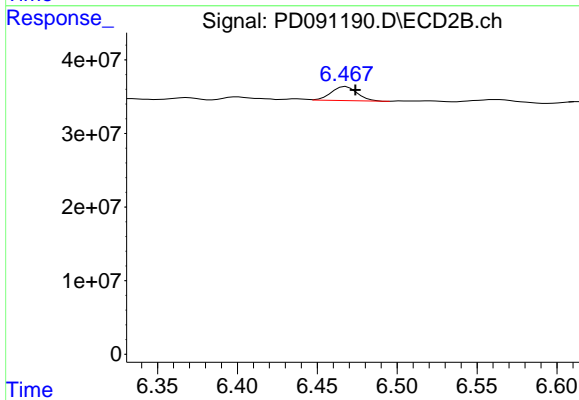
R.T.: 6.271 min  
 Delta R.T.: 0.021 min  
 Response: 18076004  
 Conc: 0.65 ng/ml



#19 Endosulfan Sulfate

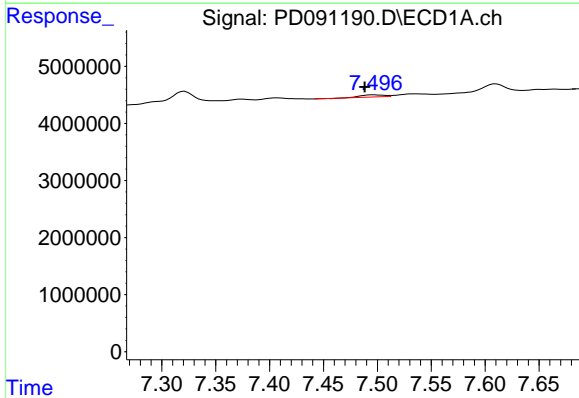
R.T.: 7.161 min  
 Delta R.T.: 0.017 min  
 Response: 1001843  
 Conc: 0.22 ng/ml

Instrument :  
 ECD\_D  
 ClientSampleId :  
 OK-02-11122025RE



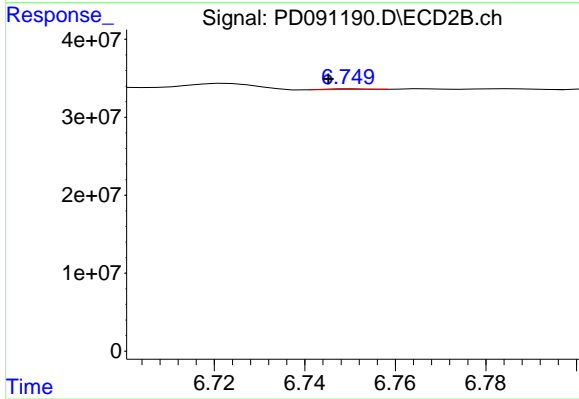
#19 Endosulfan Sulfate

R.T.: 6.468 min  
 Delta R.T.: -0.006 min  
 Response: 21549495  
 Conc: 0.60 ng/ml



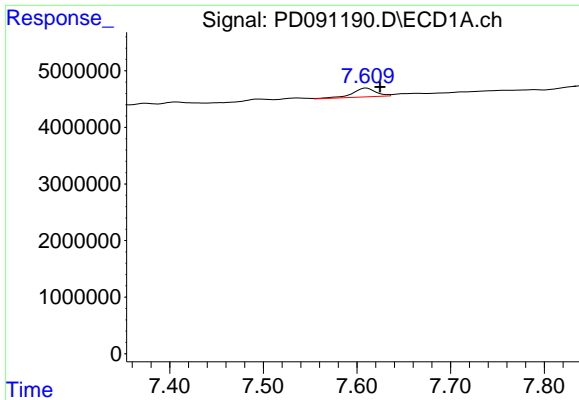
#20 Methoxychlor

R.T.: 7.497 min  
 Delta R.T.: 0.009 min  
 Response: 518538  
 Conc: 0.24 ng/ml



#20 Methoxychlor

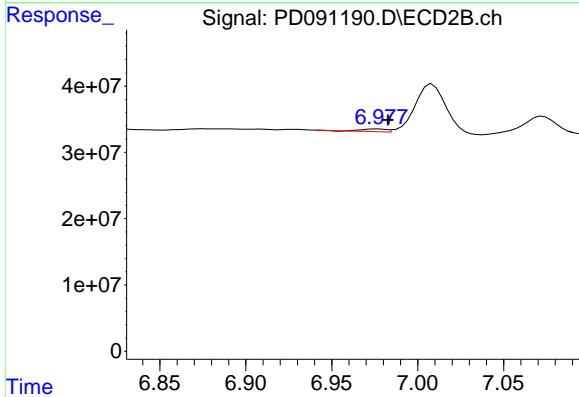
R.T.: 6.751 min  
 Delta R.T.: 0.005 min  
 Response: 516733  
 Conc: 0.03 ng/ml



#21 Endrin ketone

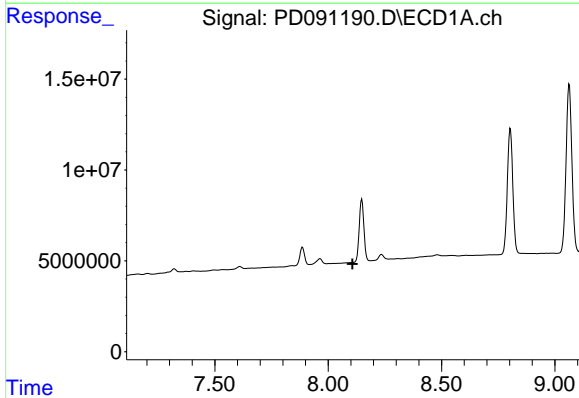
R.T.: 7.610 min  
 Delta R.T.: -0.015 min  
 Response: 2712197  
 Conc: 0.56 ng/ml

Instrument :  
 ECD\_D  
 ClientSampleId :  
 OK-02-11122025RE



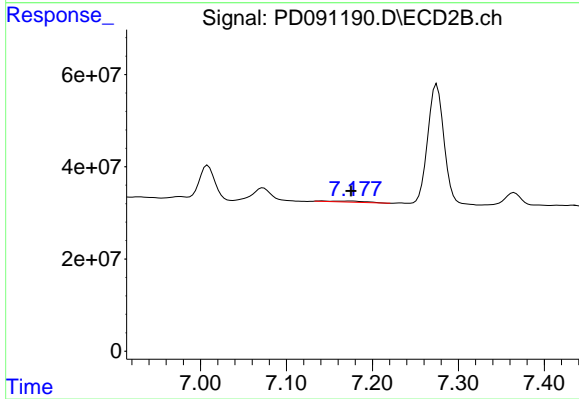
#21 Endrin ketone

R.T.: 6.977 min  
 Delta R.T.: -0.006 min  
 Response: 3986064  
 Conc: 0.11 ng/ml



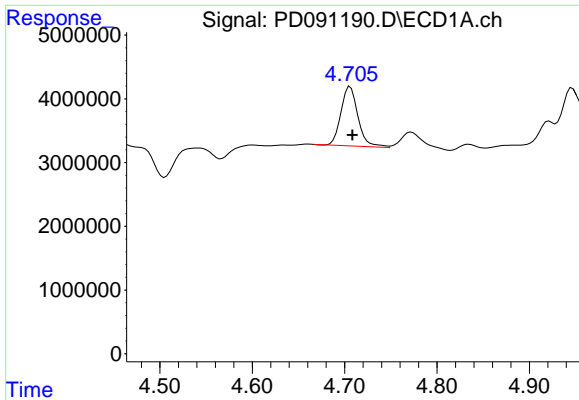
#22 Mirex

R.T.: 0.000 min  
 Exp R.T. : 8.107 min  
 Response: 0  
 Conc: N.D.



#22 Mirex

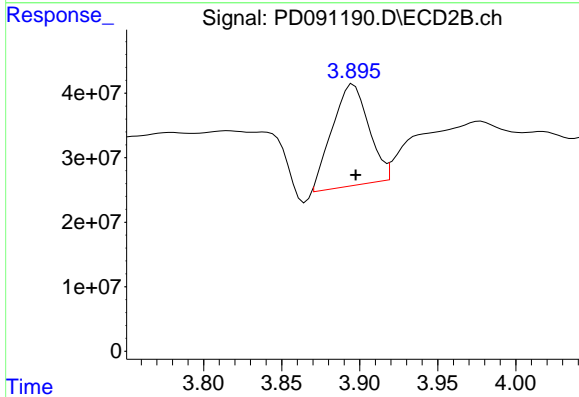
R.T.: 7.176 min  
 Delta R.T.: 0.000 min  
 Response: 6631244  
 Conc: 0.26 ng/ml



#23 Chlordane-1

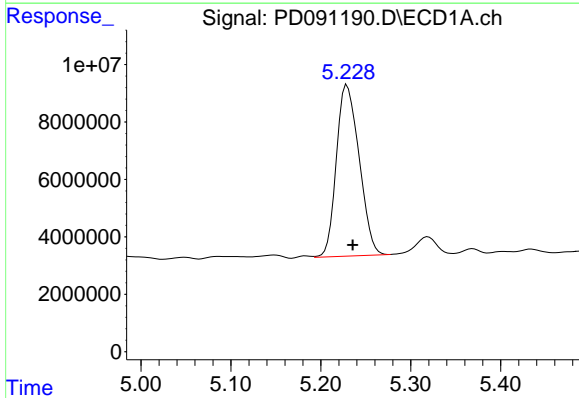
R.T.: 4.706 min  
 Delta R.T.: -0.003 min  
 Response: 11922404  
 Conc: 63.09 ng/ml

Instrument :  
 ECD\_D  
 ClientSampleId :  
 OK-02-11122025RE



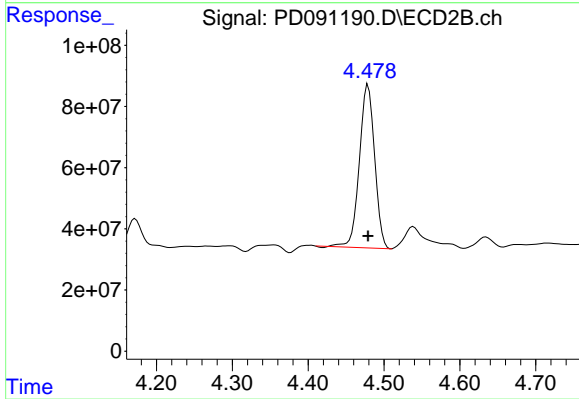
#23 Chlordane-1

R.T.: 3.896 min  
 Delta R.T.: -0.002 min  
 Response: 254670444  
 Conc: 204.35 ng/ml



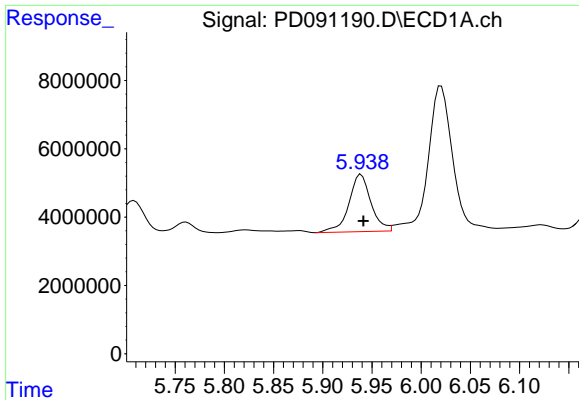
#24 Chlordane-2

R.T.: 5.229 min  
 Delta R.T.: -0.006 min  
 Response: 104914290  
 Conc: 543.23 ng/ml



#24 Chlordane-2

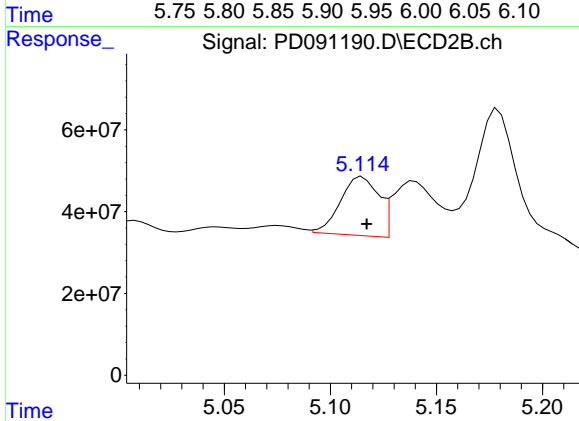
R.T.: 4.479 min  
 Delta R.T.: 0.000 min  
 Response: 743912116  
 Conc: 570.26 ng/ml



#25 Chlordane-3

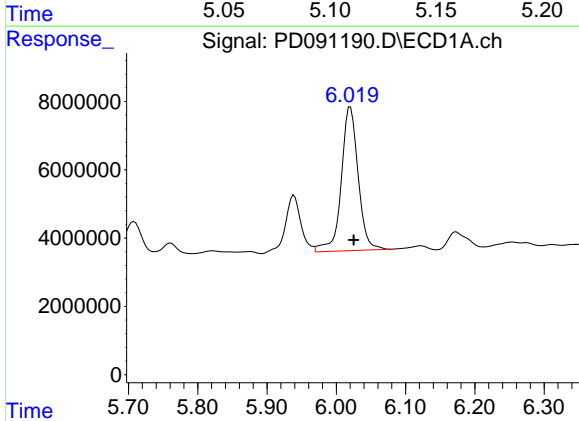
R.T.: 5.939 min  
 Delta R.T.: -0.002 min  
 Response: 26080007  
 Conc: 34.19 ng/ml

Instrument :  
 ECD\_D  
 ClientSampleId :  
 OK-02-11122025RE



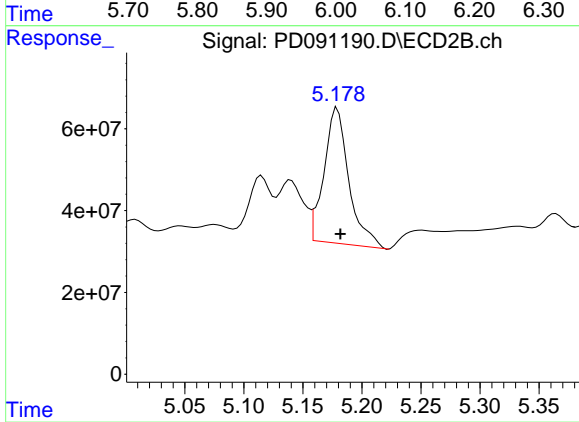
#25 Chlordane-3

R.T.: 5.115 min  
 Delta R.T.: -0.002 min  
 Response: 179870560  
 Conc: 46.22 ng/ml



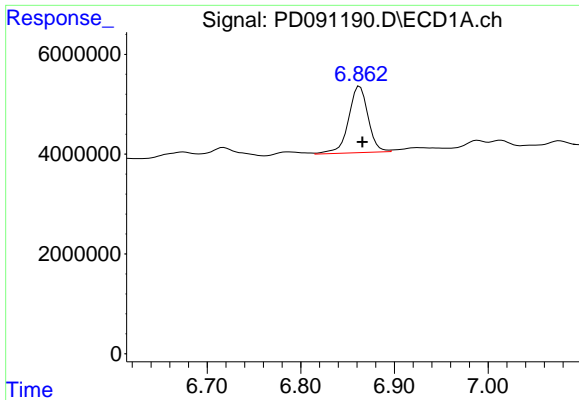
#26 Chlordane-4

R.T.: 6.020 min  
 Delta R.T.: -0.005 min  
 Response: 71129994  
 Conc: 73.41 ng/ml



#26 Chlordane-4

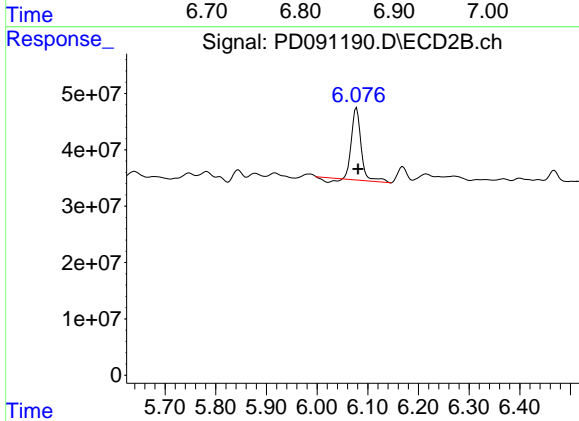
R.T.: 5.179 min  
 Delta R.T.: -0.003 min  
 Response: 485777713  
 Conc: 145.39 ng/ml



#27 Chlordane-5

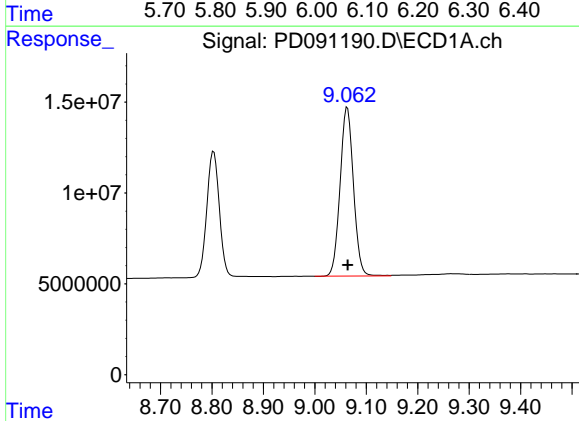
R.T.: 6.863 min  
 Delta R.T.: -0.003 min  
 Response: 19264039  
 Conc: 128.21 ng/ml

Instrument :  
 ECD\_D  
 ClientSampleId :  
 OK-02-11122025RE



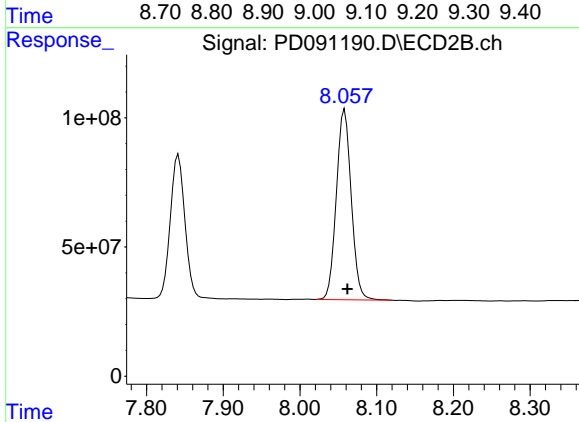
#27 Chlordane-5

R.T.: 6.078 min  
 Delta R.T.: -0.003 min  
 Response: 163574473  
 Conc: 110.82 ng/ml



#28 Decachlorobiphenyl

R.T.: 9.063 min  
 Delta R.T.: 0.000 min  
 Response: 168150361  
 Conc: 35.95 ng/ml



#28 Decachlorobiphenyl

R.T.: 8.058 min  
 Delta R.T.: -0.004 min  
 Response: 992870178  
 Conc: 32.78 ng/ml