

Data Path : Z:\pestpcbsrv\HPCHEM1\ECD\_D\Data\PD111518\  
 Data File : PD050326.D  
 Signal(s) : Signal #1: ECD1A.CH Signal #2: ECD2B.CH  
 Acq On : 15 Nov 2018 18:30  
 Operator : AJ\SJ  
 Sample : TOXAPH501  
 Misc :  
 ALS Vial : 8 Sample Multiplier: 1

Instrument :  
 ECD\_D  
 ClientSampleId :

Integration File signal 1: autoint1.e  
 Integration File signal 2: autoint2.e  
 Quant Time: Nov 16 04:58:58 2018  
 Quant Method : Z:\pestpcbsrv\HPCHEM1\ECD\_D\Method\PD111518CLP.M  
 Quant Title : GC Extractables  
 QLast Update : Fri Nov 16 04:56:51 2018  
 Response via : Initial Calibration  
 Integrator: ChemStation 6890 Scale Mode: Large solvent peaks clipped

Volume Inj. : 1 µl  
 Signal #1 Phase : ZB-MR2 Signal #2 Phase: ZB-MR1  
 Signal #1 Info : 30M x 0.32mm x0.2 Signal #2 Info : 30M x 0.32mm x 0.50µm

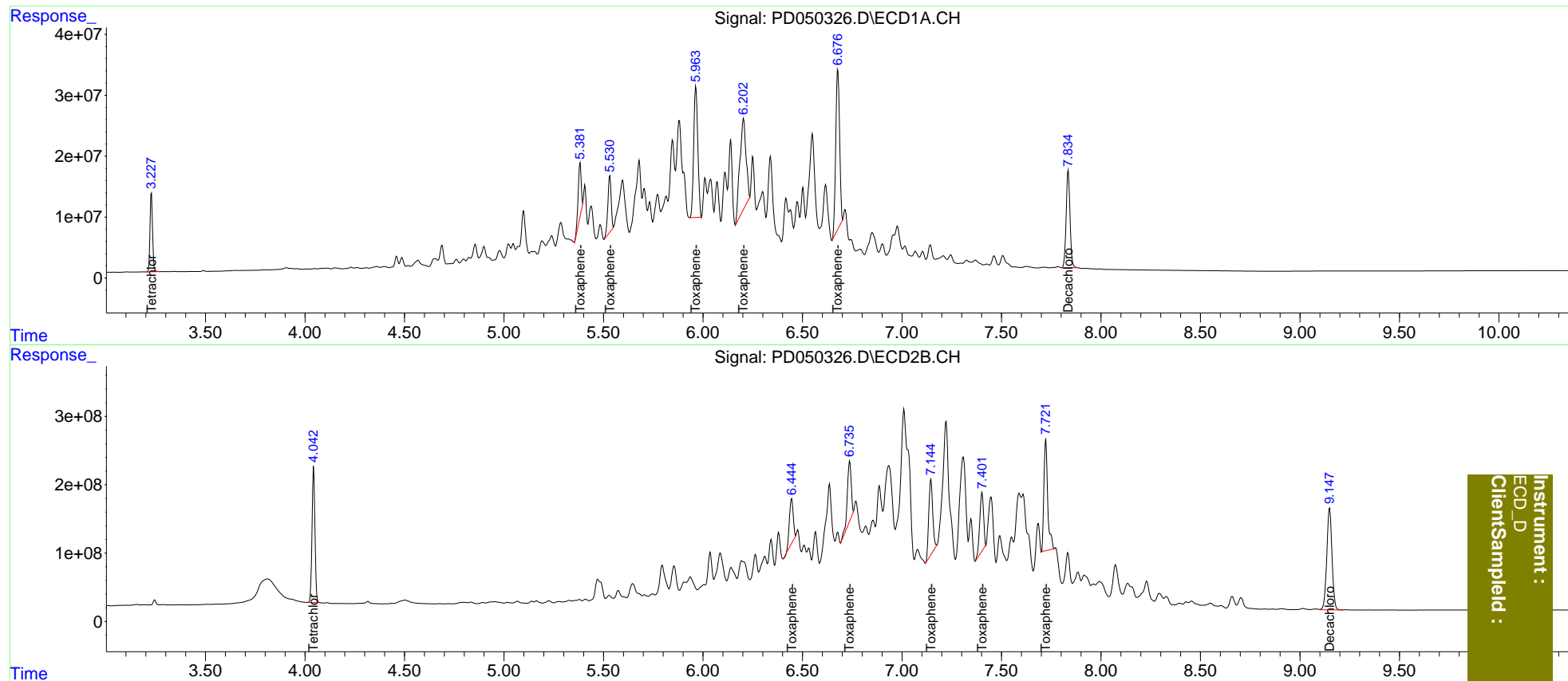
Compound	RT#1	RT#2	Resp#1	Resp#2	ng/ml	ng/ml
-----						
System Monitoring Compounds						
1) SA Tetrachlo...	3.228	4.044	116.4E6	2039.3E6	78.697	69.180
27) SA Decachlor...	7.835	9.149	215.5E6	2716.9E6	147.001	134.368
Target Compounds						
22) Toxaphene-1	5.383	6.446	88385973	861.1E6	8833.458	6929.846
23) Toxaphene-2	5.532	6.737	104.1E6	1171.7E6	8479.518	7430.232
24) Toxaphene-3	5.964	7.146	309.3E6	1501.2E6	8855.445	7203.017
25) Toxaphene-4	6.204	7.402	320.9E6	1171.1E6	9063.090	7914.594
26) Toxaphene-5	6.678	7.723	355.0E6	2181.3E6	8714.507	7175.887
-----						

(f)=RT Delta > 1/2 Window (#)=Amounts differ by > 25% (m)=manual int.

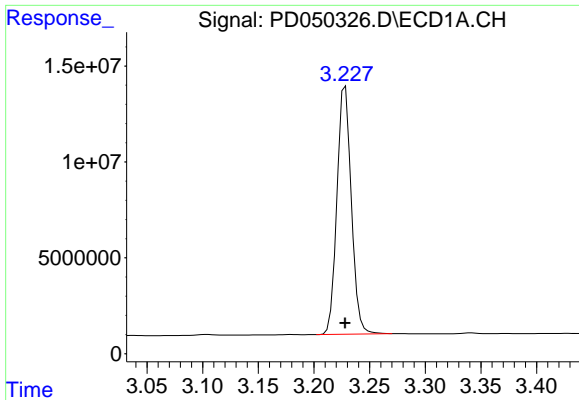
Data Path : Z:\pestpcbsrv\HPCHEM1\ECD\_D\Data\PD111518\  
 Data File : PD050326.D  
 Signal(s) : Signal #1: ECD1A.CH Signal #2: ECD2B.CH  
 Acq On : 15 Nov 2018 18:30  
 Operator : AJ\SJ  
 Sample : TOXAPH501  
 Misc :  
 ALS Vial : 8 Sample Multiplier: 1

Integration File signal 1: autoint1.e  
 Integration File signal 2: autoint2.e  
 Quant Time: Nov 16 04:58:58 2018  
 Quant Method : Z:\pestpcbsrv\HPCHEM1\ECD\_D\Method\PD111518CLP.M  
 Quant Title : GC Extractables  
 QLast Update : Fri Nov 16 04:56:51 2018  
 Response via : Initial Calibration  
 Integrator: ChemStation 6890 Scale Mode: Large solvent peaks clipped

Volume Inj. : 1 µl  
 Signal #1 Phase : ZB-MR2 Signal #2 Phase: ZB-MR1  
 Signal #1 Info : 30M x 0.32mm x0.2 Signal #2 Info : 30M x 0.32mm x 0.50µm

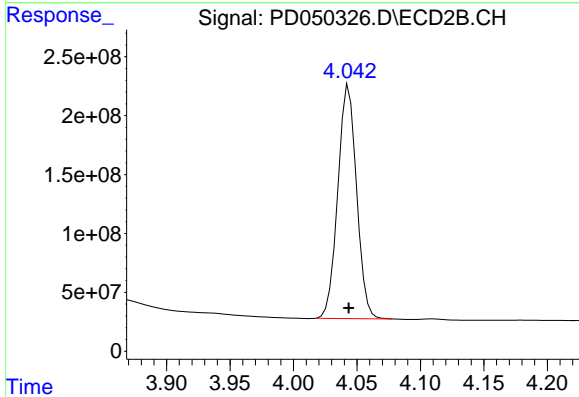


Instrument :  
 ECD\_D  
 ClientSampleId :

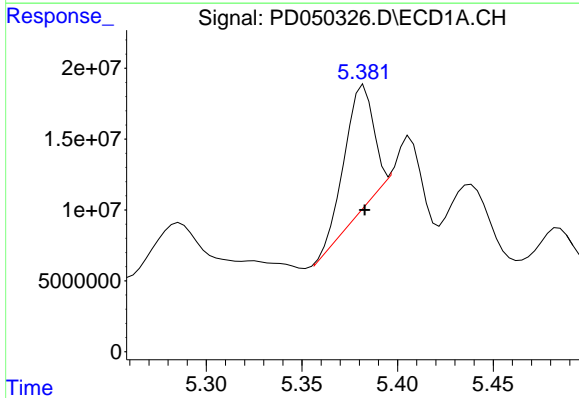


#1 Tetrachloro-m-xylene  
 R.T.: 3.228 min  
 Delta R.T.: 0.000 min  
 Response: 116367243  
 Conc: 78.70 ng/ml

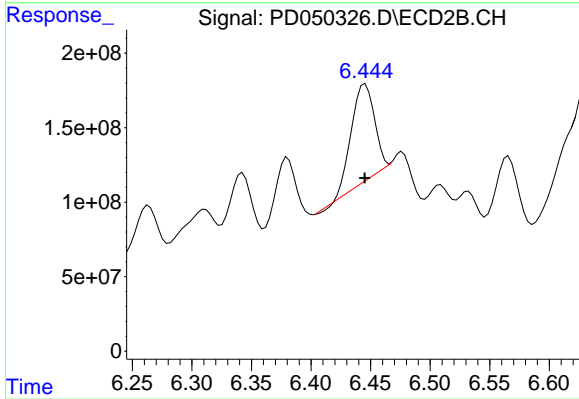
Instrument :  
 ECD\_D  
 ClientSampleId :



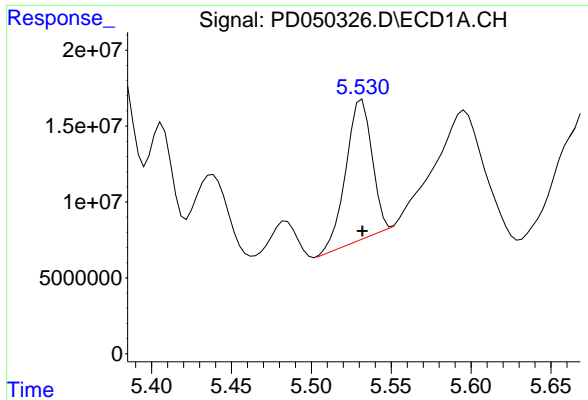
#1 Tetrachloro-m-xylene  
 R.T.: 4.044 min  
 Delta R.T.: 0.000 min  
 Response: 2039308703  
 Conc: 69.18 ng/ml



#22 Toxaphene-1  
 R.T.: 5.383 min  
 Delta R.T.: 0.000 min  
 Response: 88385973  
 Conc: 8833.46 ng/ml

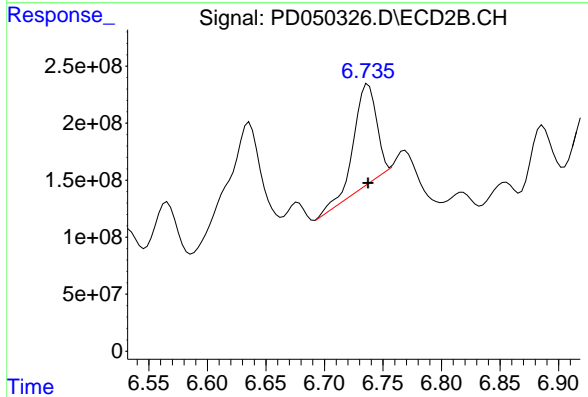


#22 Toxaphene-1  
 R.T.: 6.446 min  
 Delta R.T.: 0.000 min  
 Response: 861062780  
 Conc: 6929.85 ng/ml

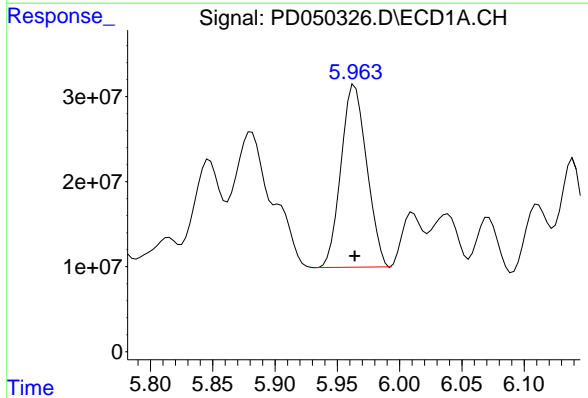


#23 Toxaphene-2  
 R.T.: 5.532 min  
 Delta R.T.: 0.000 min  
 Response: 104070527  
 Conc: 8479.52 ng/ml

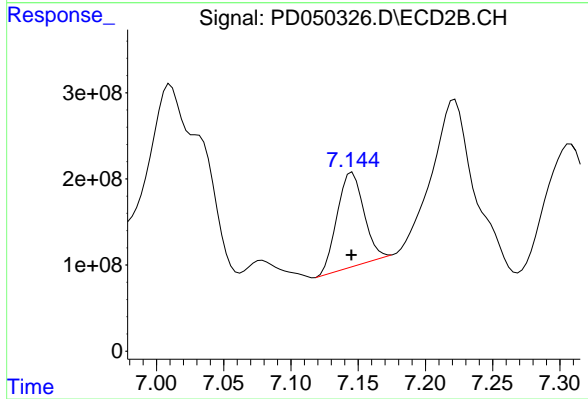
Instrument :  
 ECD\_D  
 ClientSampleId :



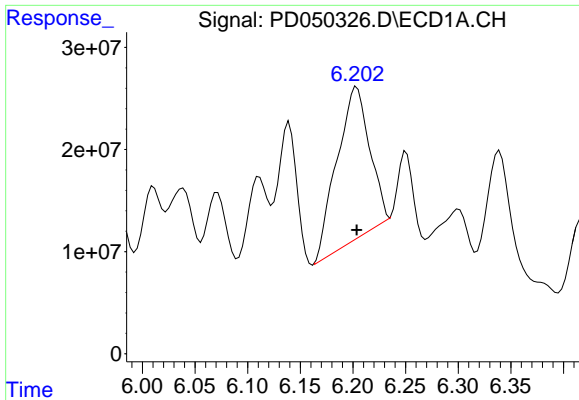
#23 Toxaphene-2  
 R.T.: 6.737 min  
 Delta R.T.: 0.000 min  
 Response: 1171690103  
 Conc: 7430.23 ng/ml



#24 Toxaphene-3  
 R.T.: 5.964 min  
 Delta R.T.: 0.000 min  
 Response: 309305394  
 Conc: 8855.45 ng/ml



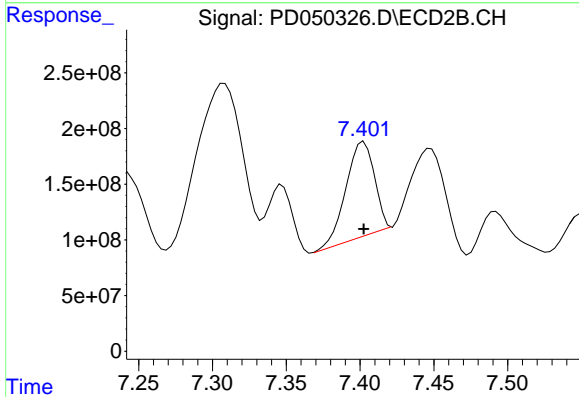
#24 Toxaphene-3  
 R.T.: 7.146 min  
 Delta R.T.: 0.000 min  
 Response: 1501160107  
 Conc: 7203.02 ng/ml



#25 Toxaphene-4

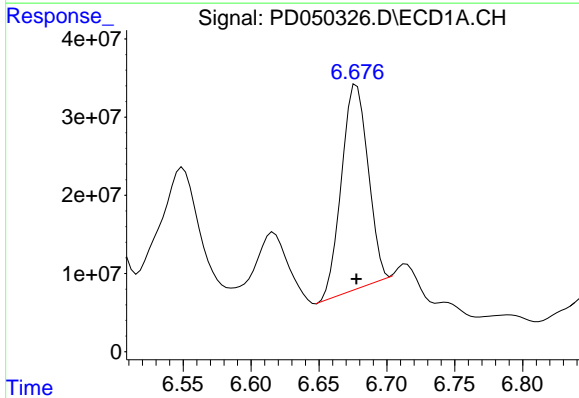
R.T.: 6.204 min  
 Delta R.T.: 0.000 min  
 Response: 32090271  
 Conc: 9063.09 ng/ml

Instrument :  
 ECD\_D  
 ClientSampleId :



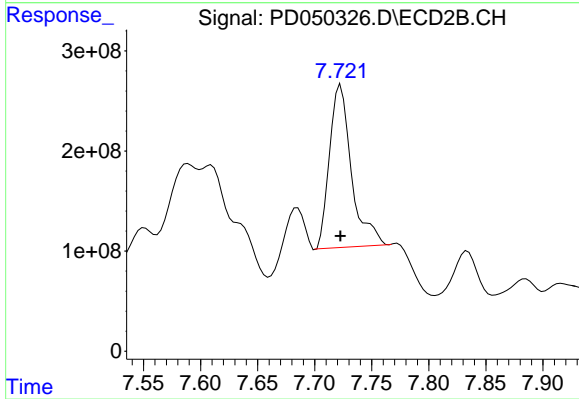
#25 Toxaphene-4

R.T.: 7.402 min  
 Delta R.T.: 0.000 min  
 Response: 1171064381  
 Conc: 7914.59 ng/ml



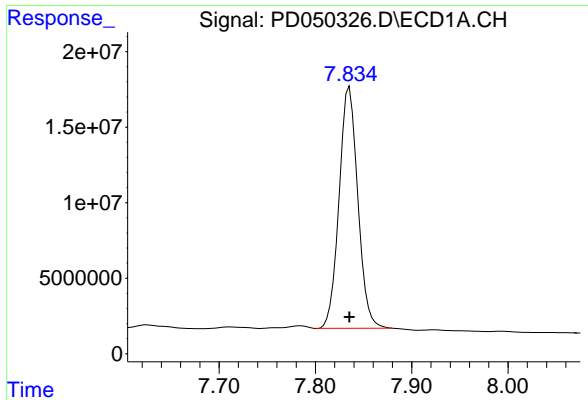
#26 Toxaphene-5

R.T.: 6.678 min  
 Delta R.T.: 0.000 min  
 Response: 355043958  
 Conc: 8714.51 ng/ml



#26 Toxaphene-5

R.T.: 7.723 min  
 Delta R.T.: 0.000 min  
 Response: 2181267691  
 Conc: 7175.89 ng/ml



#27 Decachlorobiphenyl

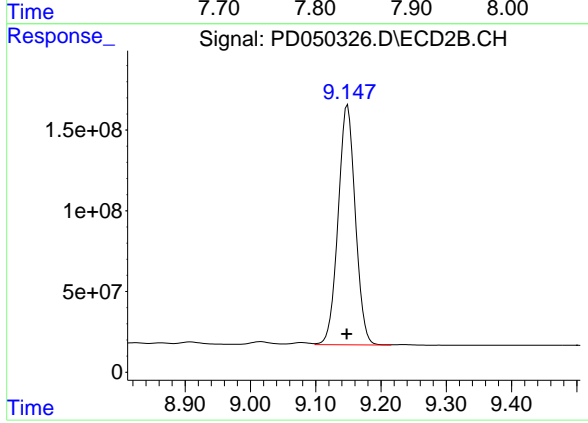
R.T.: 7.835 min

Delta R.T.: 0.000 min

Response: 215463667

Conc: 147.00 ng/ml

Instrument :  
ECD\_D  
ClientSampleId :



#27 Decachlorobiphenyl

R.T.: 9.149 min

Delta R.T.: 0.001 min

Response: 2716879533

Conc: 134.37 ng/ml