

Data Path : Z:\pestpcbsrv\HPCHEM1\ECD\_D\Data\PD111519\  
 Data File : PD056043.D  
 Signal(s) : Signal #1: ECD1A.ch Signal #2: ECD2B.ch  
 Acq On : 15 Nov 2019 18:06  
 Operator : SG\AJ  
 Sample : K5783-22  
 Misc :  
 ALS Vial : 29 Sample Multiplier: 1

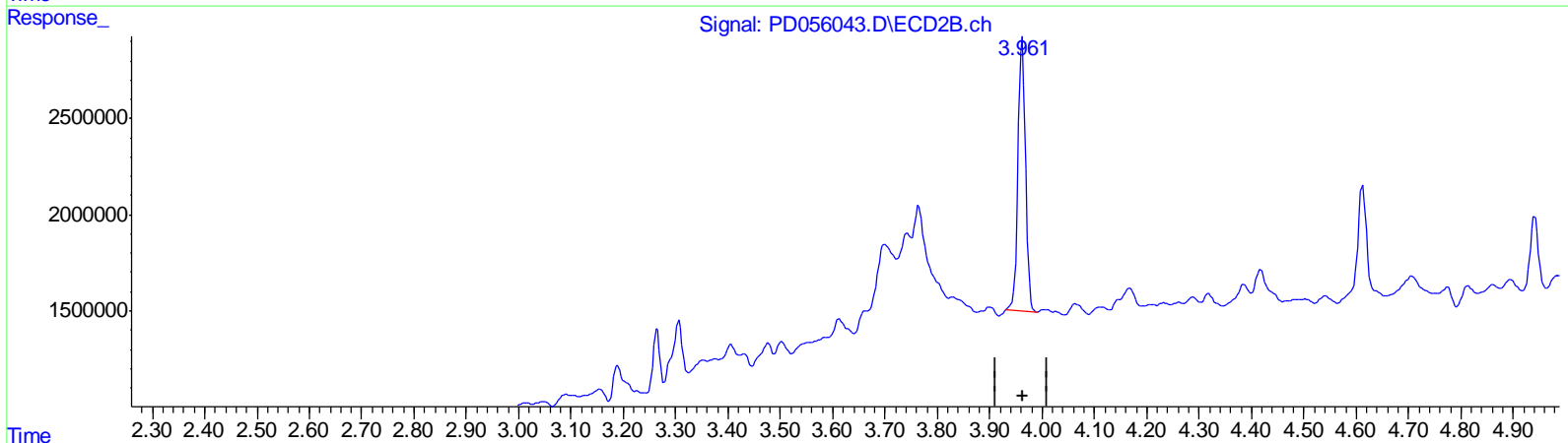
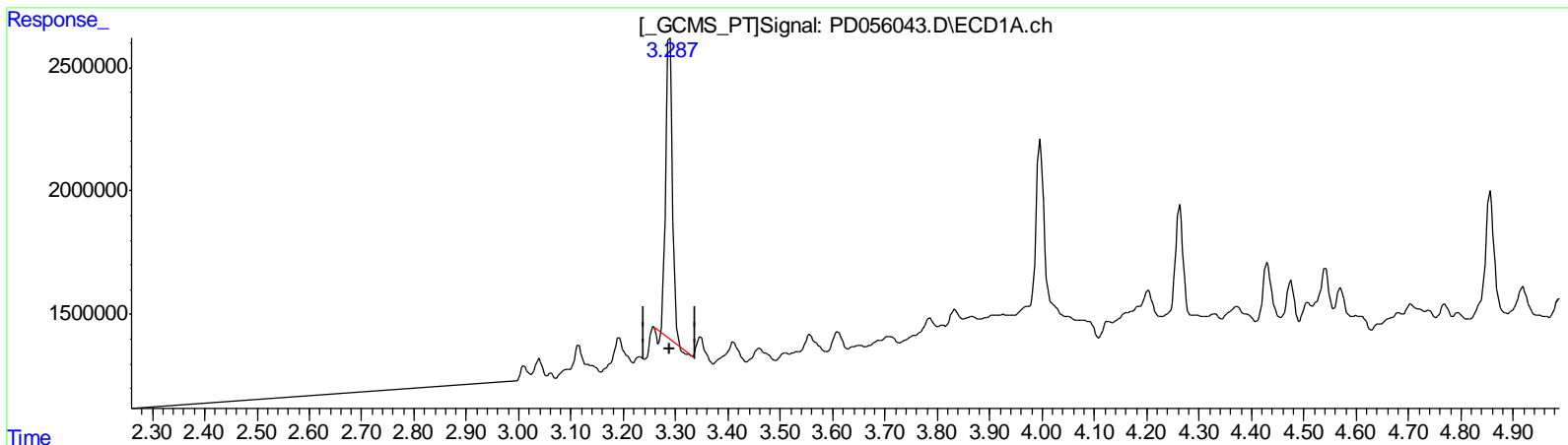
Instrument :  
 ECD\_D  
 Client Sampled :  
 C0AZ7

Manual Integrations  
 APPROVED

Ankita  
 11/18/2019 2:57:05 PM

Integration File signal 1: autoint1.e  
 Integration File signal 2: autoint2.e  
 Quant Time: Nov 16 02:21:24 2019  
 Quant Method : Z:\pestpcbsrv\HPCHEM1\ECD\_D\Method\PD110319CLP.M  
 Quant Title : GC Extractables  
 QLast Update : Sat Nov 02 07:20:38 2019  
 Response via : Initial Calibration  
 Integrator: ChemStation

Volume Inj. : 1 µl  
 Signal #1 Phase : ZB-MR2 Signal #2 Phase: ZB-MR1  
 Signal #1 Info : 30M x 0.32mm x0.2 Signal #2 Info : 30M x 0.32mm x 0.50µm



QEdit

(1) Tetrachloro-m-xylene (SA)  
 3.288min 14.675 ng/ml  
 response 11046613

(1) Tetrachloro-m-xylene #2 (SA)  
 3.962min 13.843 ng/ml  
 response 14506951

(+) = Expected Retention Time

Data Path : Z:\pestpcbsrv\HPCHEM1\ECD\_D\Data\PD111519\  
 Data File : PD056043.D  
 Signal(s) : Signal #1: ECD1A.ch Signal #2: ECD2B.ch  
 Acq On : 15 Nov 2019 18:06  
 Operator : SG\AJ  
 Sample : K5783-22  
 Misc :  
 ALS Vial : 29 Sample Multiplier: 1

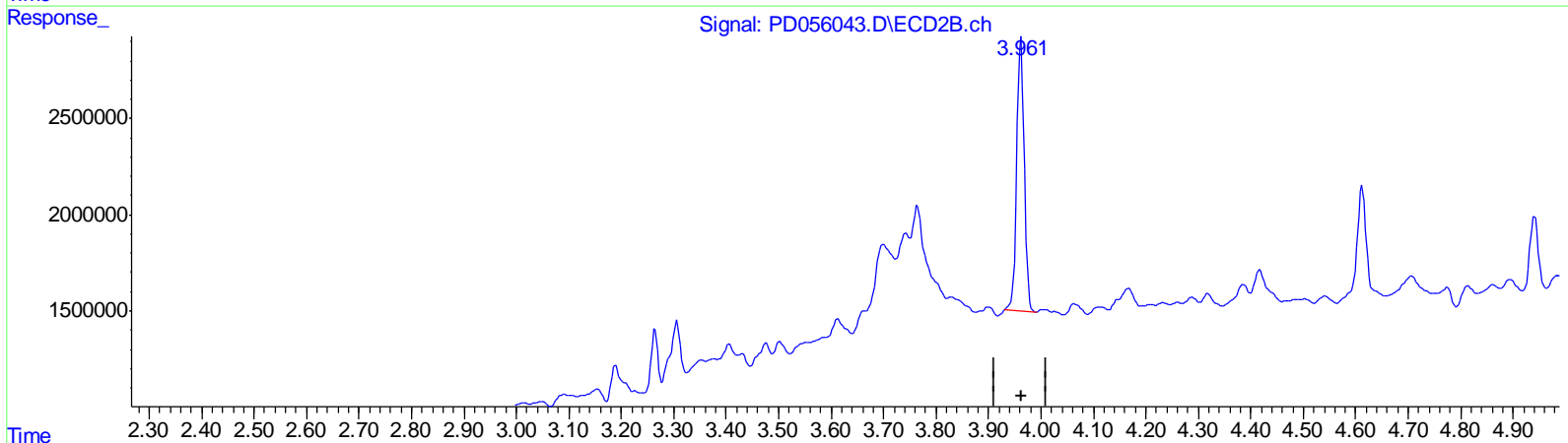
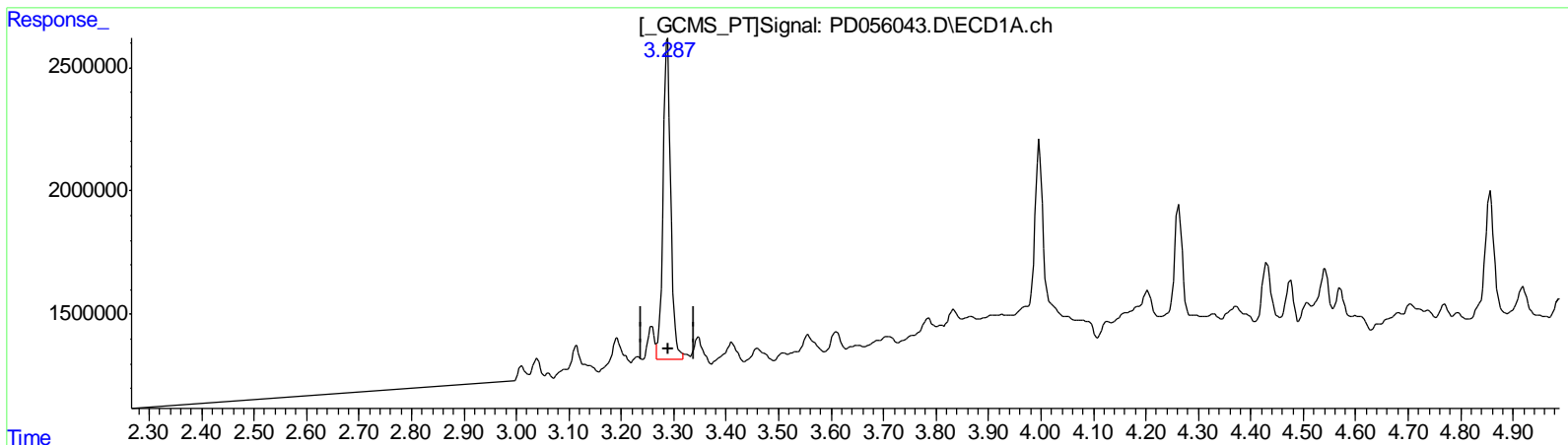
Instrument :  
 ECD\_D  
 Client Sampled :  
 C0AZ7

Manual Integrations  
 APPROVED

Ankita  
 11/18/2019 2:57:05 PM

Integration File signal 1: autoint1.e  
 Integration File signal 2: autoint2.e  
 Quant Time: Nov 16 02:21:24 2019  
 Quant Method : Z:\pestpcbsrv\HPCHEM1\ECD\_D\Method\PD110319CLP.M  
 Quant Title : GC Extractables  
 QLast Update : Sat Nov 02 07:20:38 2019  
 Response via : Initial Calibration  
 Integrator: ChemStation

Volume Inj. : 1 µl  
 Signal #1 Phase : ZB-MR2 Signal #2 Phase: ZB-MR1  
 Signal #1 Info : 30M x 0.32mm x0.2 Signal #2 Info : 30M x 0.32mm x 0.50µm



QEdit

(1) Tetrachloro-m-xylene (SA)

3.287min 17.874 ng/ml m

response 13455315

(1) Tetrachloro-m-xylene #2 (SA)

3.962min 13.843 ng/ml

response 14506951

(+) = Expected Retention Time

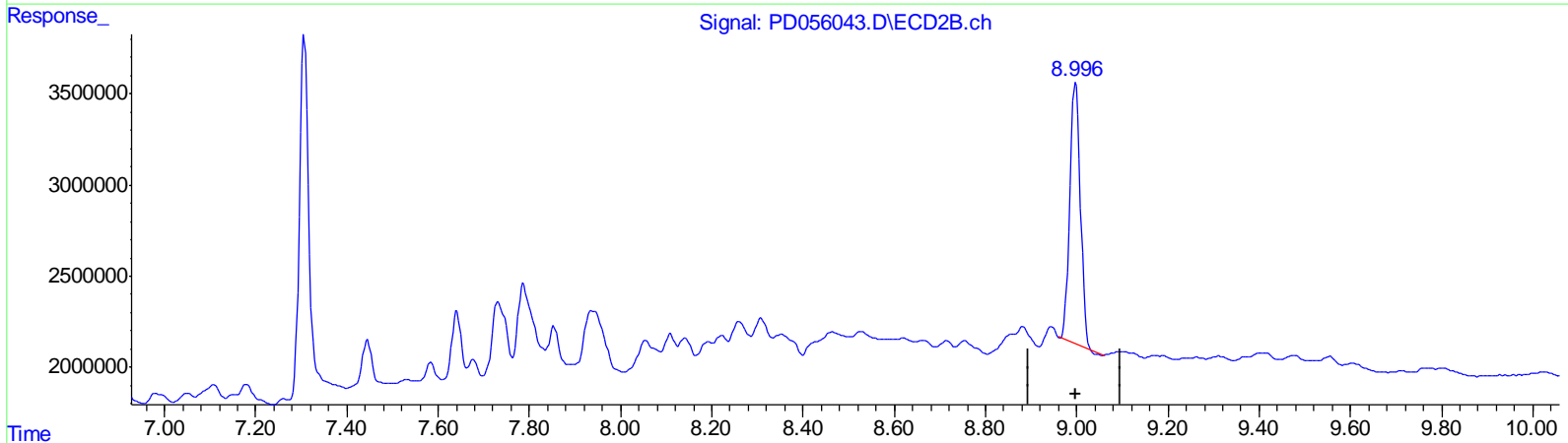
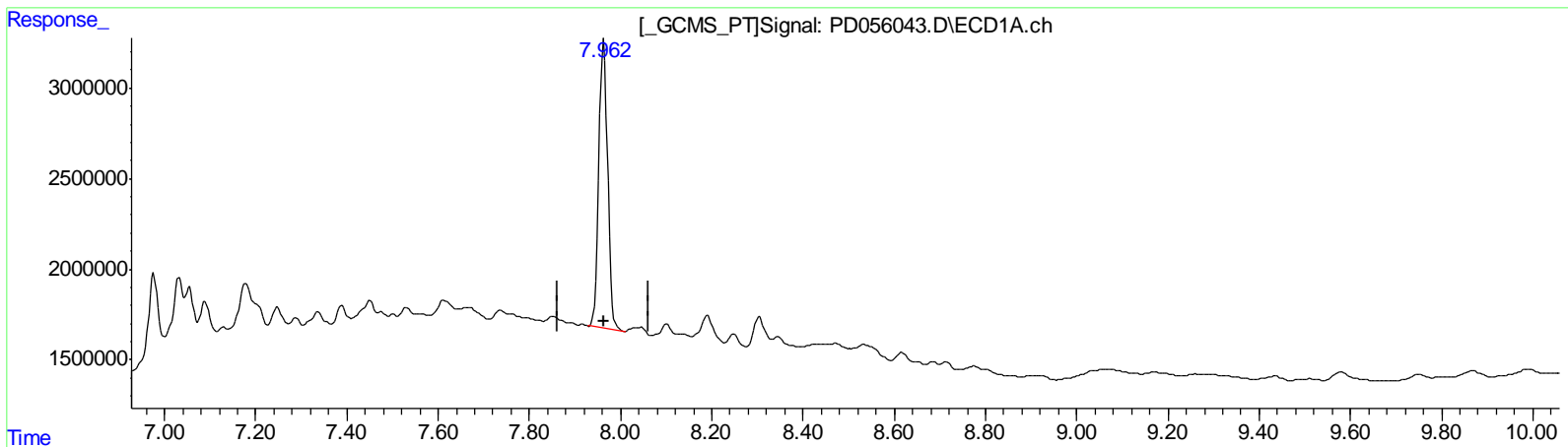
Data Path : Z:\pestpcbsrv\HPCHEM1\ECD\_D\Data\PD111519\  
 Data File : PD056043.D  
 Signal(s) : Signal #1: ECD1A.ch Signal #2: ECD2B.ch  
 Acq On : 15 Nov 2019 18:06  
 Operator : SG\AJ  
 Sample : K5783-22  
 Misc :  
 ALS Vial : 29 Sample Multiplier: 1

**Instrument :**  
 ECD\_D  
**ClientSampled :**  
 C0AZ7

**Manual Integrations**  
**APPROVED**  
 Ankita  
 11/18/2019 2:57:05 PM

Integration File signal 1: autoint1.e  
 Integration File signal 2: autoint2.e  
 Quant Time: Nov 16 02:21:24 2019  
 Quant Method : Z:\pestpcbsrv\HPCHEM1\ECD\_D\Method\PD110319CLP.M  
 Quant Title : GC Extractables  
 QLast Update : Sat Nov 02 07:20:38 2019  
 Response via : Initial Calibration  
 Integrator: ChemStation

Volume Inj. : 1 µl  
 Signal #1 Phase : ZB-MR2 Signal #2 Phase: ZB-MR1  
 Signal #1 Info : 30M x 0.32mm x0.2 Signal #2 Info : 30M x 0.32mm x 0.50µm



QEdit

(27) Decachlorobiphenyl (SA)

7.963min 25.771 ng/ml

response 21006470

(27) Decachlorobiphenyl #2 (SA)

8.998min 20.131 ng/ml

response 22859648

(+) = Expected Retention Time

Data Path : Z:\pestpcbsrv\HPCHEM1\ECD\_D\Data\PD111519\  
 Data File : PD056043.D  
 Signal(s) : Signal #1: ECD1A.ch Signal #2: ECD2B.ch  
 Acq On : 15 Nov 2019 18:06  
 Operator : SG\AJ  
 Sample : K5783-22  
 Misc :  
 ALS Vial : 29 Sample Multiplier: 1

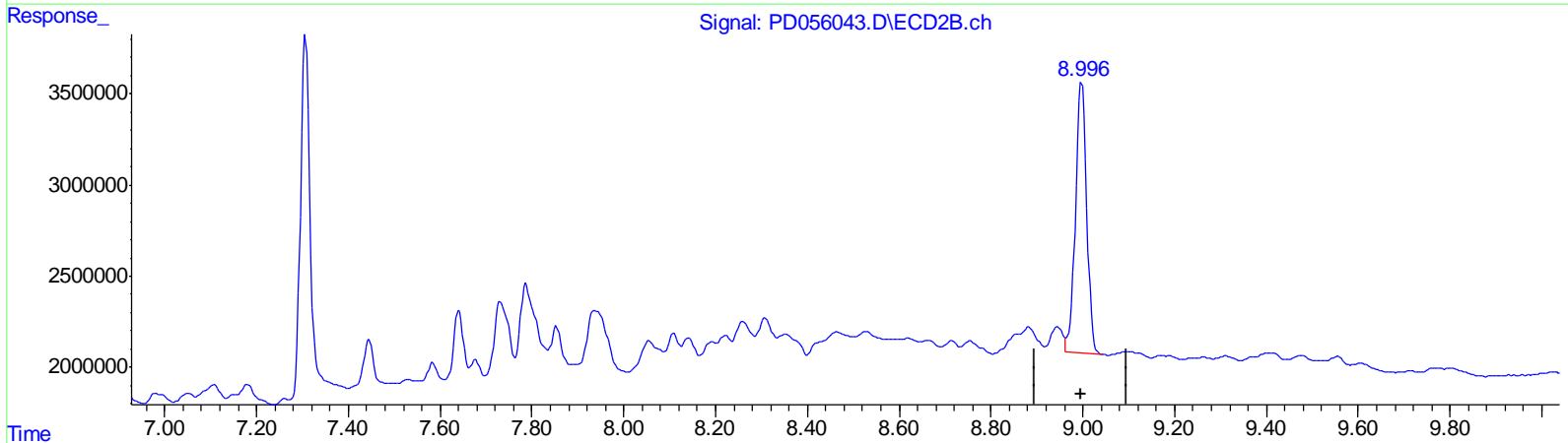
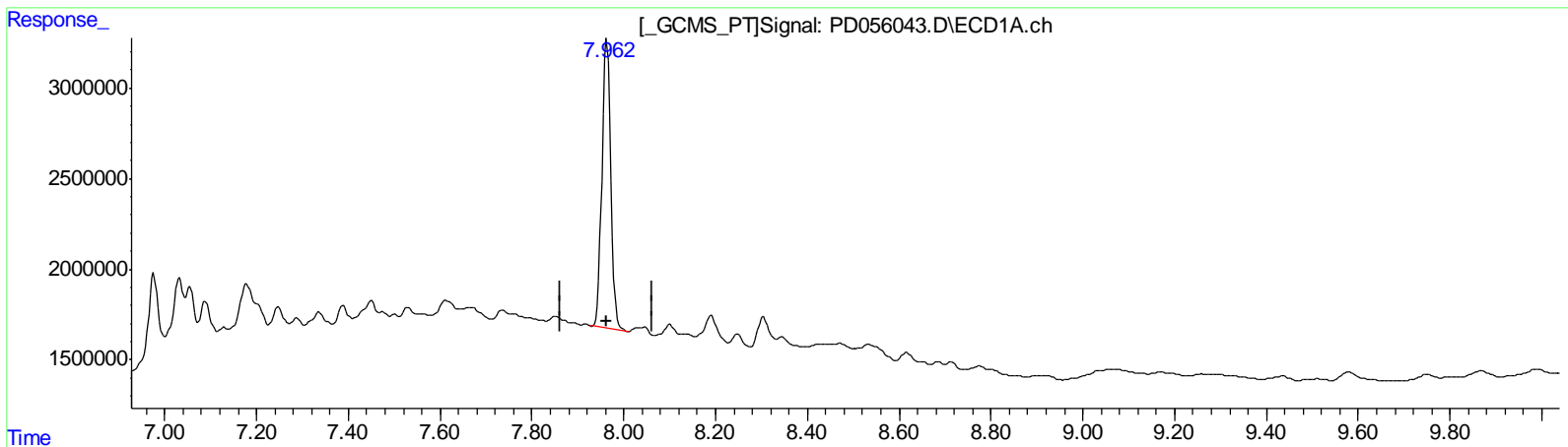
Instrument :  
 ECD\_D  
 ClientSampled :  
 C0AZ7

Manual Integrations  
 APPROVED

Ankita  
 11/18/2019 2:57:05 PM

Integration File signal 1: autoint1.e  
 Integration File signal 2: autoint2.e  
 Quant Time: Nov 16 02:21:24 2019  
 Quant Method : Z:\pestpcbsrv\HPCHEM1\ECD\_D\Method\PD110319CLP.M  
 Quant Title : GC Extractables  
 QLast Update : Sat Nov 02 07:20:38 2019  
 Response via : Initial Calibration  
 Integrator: ChemStation

Volume Inj. : 1 µl  
 Signal #1 Phase : ZB-MR2 Signal #2 Phase: ZB-MR1  
 Signal #1 Info : 30M x 0.32mm x0.2 Signal #2 Info : 30M x 0.32mm x 0.50µm



QEdit

(27) Decachlorobiphenyl (SA)

7.963min 25.771 ng/ml

response 21006470

(27) Decachlorobiphenyl #2 (SA)

8.996min 22.344 ng/ml m

response 25372432

(+) = Expected Retention Time

Data Path : Z:\pestpcbsrv\HPCHEM1\ECD\_D\Data\PD111519\  
 Data File : PD056043.D  
 Signal(s) : Signal #1: ECD1A.ch Signal #2: ECD2B.ch  
 Acq On : 15 Nov 2019 18:06  
 Operator : SG\AJ  
 Sample : K5783-22  
 Misc :  
 ALS Vial : 29 Sample Multiplier: 1

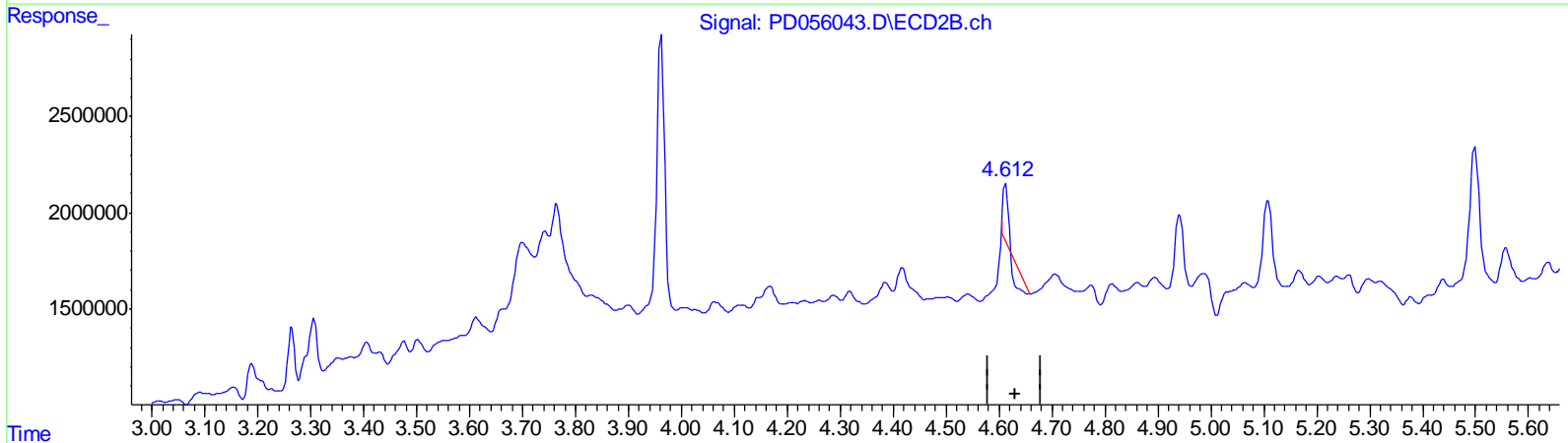
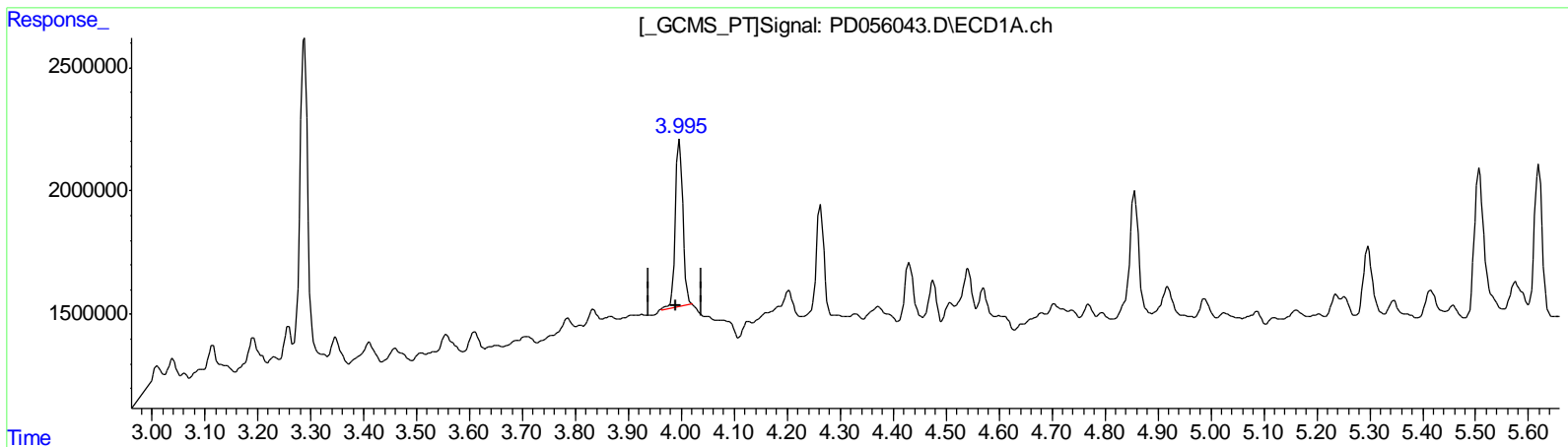
Instrument :  
 ECD\_D  
 ClientSampled :  
 C0AZ7

Manual Integrations  
 APPROVED

Ankita  
 11/18/2019 2:57:05 PM

Integration File signal 1: autoint1.e  
 Integration File signal 2: autoint2.e  
 Quant Time: Nov 16 02:21:24 2019  
 Quant Method : Z:\pestpcbsrv\HPCHEM1\ECD\_D\Method\PD110319CLP.M  
 Quant Title : GC Extractables  
 QLast Update : Sat Nov 02 07:20:38 2019  
 Response via : Initial Calibration  
 Integrator: ChemStation

Volume Inj. : 1 µl  
 Signal #1 Phase : ZB-MR2 Signal #2 Phase: ZB-MR1  
 Signal #1 Info : 30M x 0.32mm x0.2 Signal #2 Info : 30M x 0.32mm x 0.50µm



QEdit

(3) gamma-BHC (Lindane) (MA)

3.997min 6.570 ng/ml

response 6720544

(3) gamma-BHC (Lindane) #2 (MA)

4.613min 0.461 ng/ml

response 649191

(+) = Expected Retention Time

Data Path : Z:\pestpcbsrv\HPCHEM1\ECD\_D\Data\PD111519\  
 Data File : PD056043.D  
 Signal(s) : Signal #1: ECD1A.ch Signal #2: ECD2B.ch  
 Acq On : 15 Nov 2019 18:06  
 Operator : SG\AJ  
 Sample : K5783-22  
 Misc :  
 ALS Vial : 29 Sample Multiplier: 1

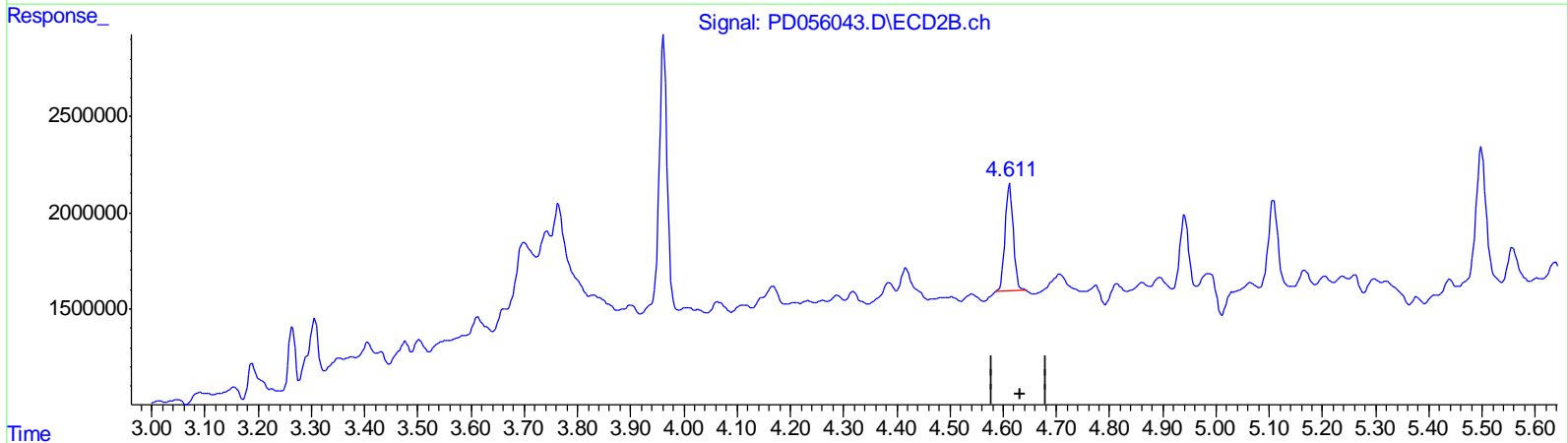
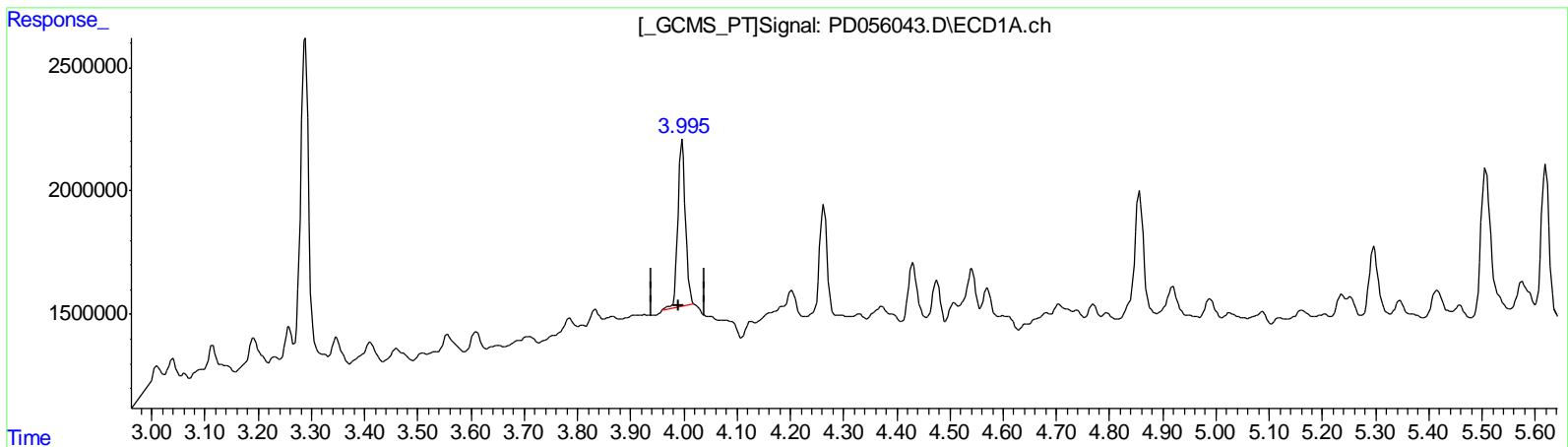
Instrument :  
 ECD\_D  
 ClientSampled :  
 C0AZ7

Manual Integrations  
 APPROVED

Ankita  
 11/18/2019 2:57:05 PM

Integration File signal 1: autoint1.e  
 Integration File signal 2: autoint2.e  
 Quant Time: Nov 16 02:21:24 2019  
 Quant Method : Z:\pestpcbsrv\HPCHEM1\ECD\_D\Method\PD110319CLP.M  
 Quant Title : GC Extractables  
 QLast Update : Sat Nov 02 07:20:38 2019  
 Response via : Initial Calibration  
 Integrator: ChemStation

Volume Inj. : 1 µl  
 Signal #1 Phase : ZB-MR2 Signal #2 Phase: ZB-MR1  
 Signal #1 Info : 30M x 0.32mm x0.2 Signal #2 Info : 30M x 0.32mm x 0.50µm



QEdit

(3) gamma-BHC (Lindane) (MA)

3.997min 6.570 ng/ml

response 6720544

(3) gamma-BHC (Lindane) #2 (MA)

4.611min 4.299 ng/ml m

response 6056218

(+) = Expected Retention Time

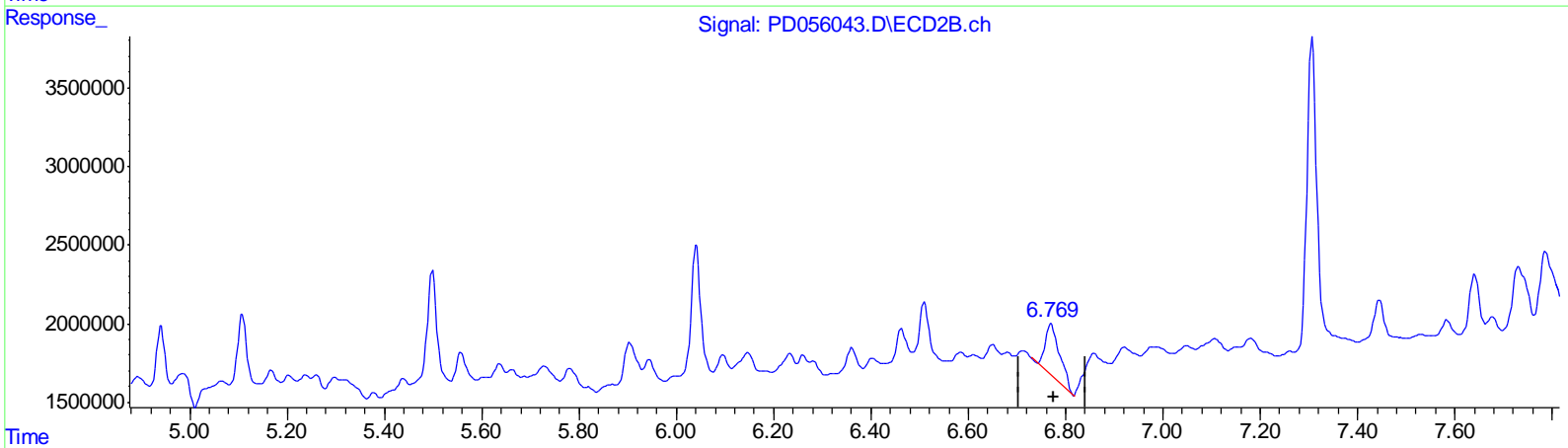
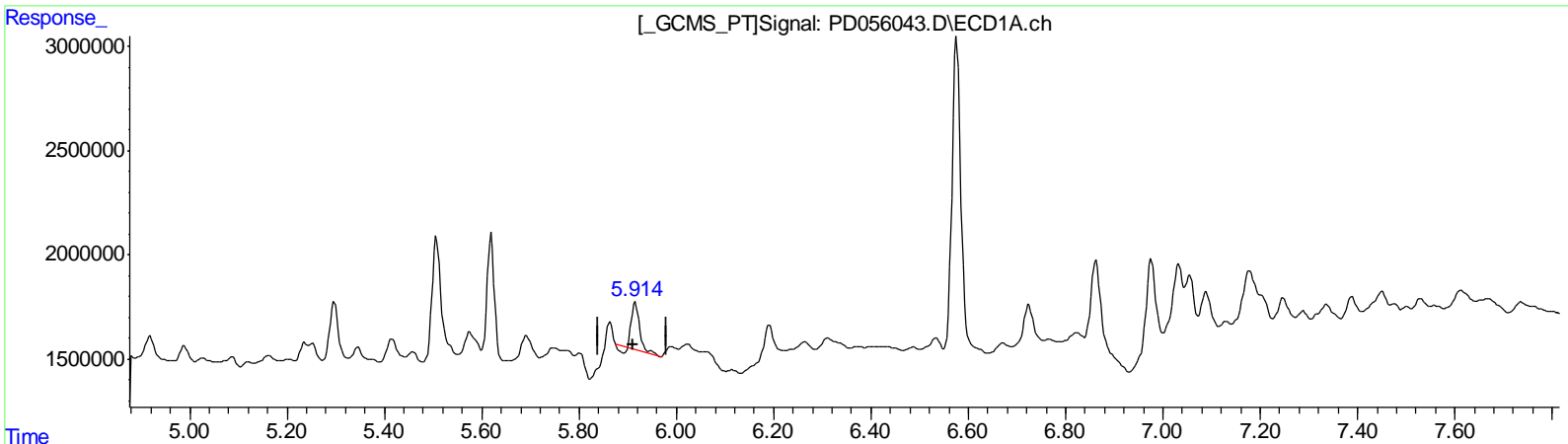
Data Path : Z:\pestpcbsrv\HPCHEM1\ECD\_D\Data\PD111519\  
 Data File : PD056043.D  
 Signal(s) : Signal #1: ECD1A.ch Signal #2: ECD2B.ch  
 Acq On : 15 Nov 2019 18:06  
 Operator : SG\AJ  
 Sample : K5783-22  
 Misc :  
 ALS Vial : 29 Sample Multiplier: 1

**Instrument :**  
 ECD\_D  
**ClientSampled :**  
 C0AZ7

**Manual Integrations**  
**APPROVED**  
 Ankita  
 11/18/2019 2:57:05 PM

Integration File signal 1: autoint1.e  
 Integration File signal 2: autoint2.e  
 Quant Time: Nov 16 02:21:24 2019  
 Quant Method : Z:\pestpcbsrv\HPCHEM1\ECD\_D\Method\PD110319CLP.M  
 Quant Title : GC Extractables  
 QLast Update : Sat Nov 02 07:20:38 2019  
 Response via : Initial Calibration  
 Integrator: ChemStation

Volume Inj. : 1 µl  
 Signal #1 Phase : ZB-MR2 Signal #2 Phase: ZB-MR1  
 Signal #1 Info : 30M x 0.32mm x0.2 Signal #2 Info : 30M x 0.32mm x 0.50µm



QEdit

(16) 4,4'-DDD (A)  
 5.916min 3.621 ng/ml  
 response 2557520

(16) 4,4'-DDD #2 (A)  
 6.770min 6.053 ng/ml  
 response 6759441

(+) = Expected Retention Time

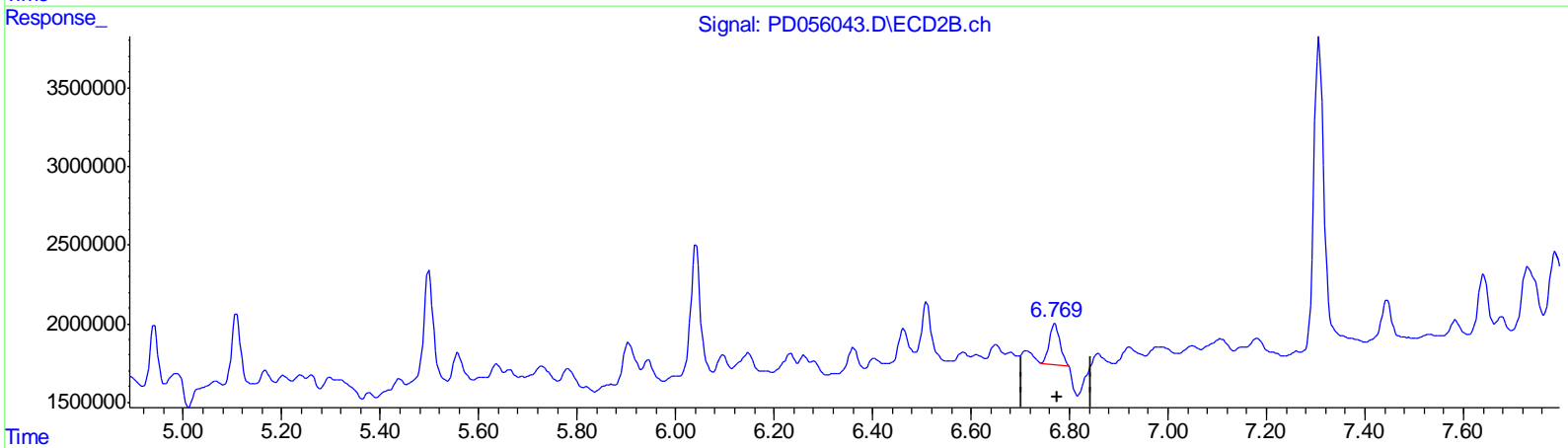
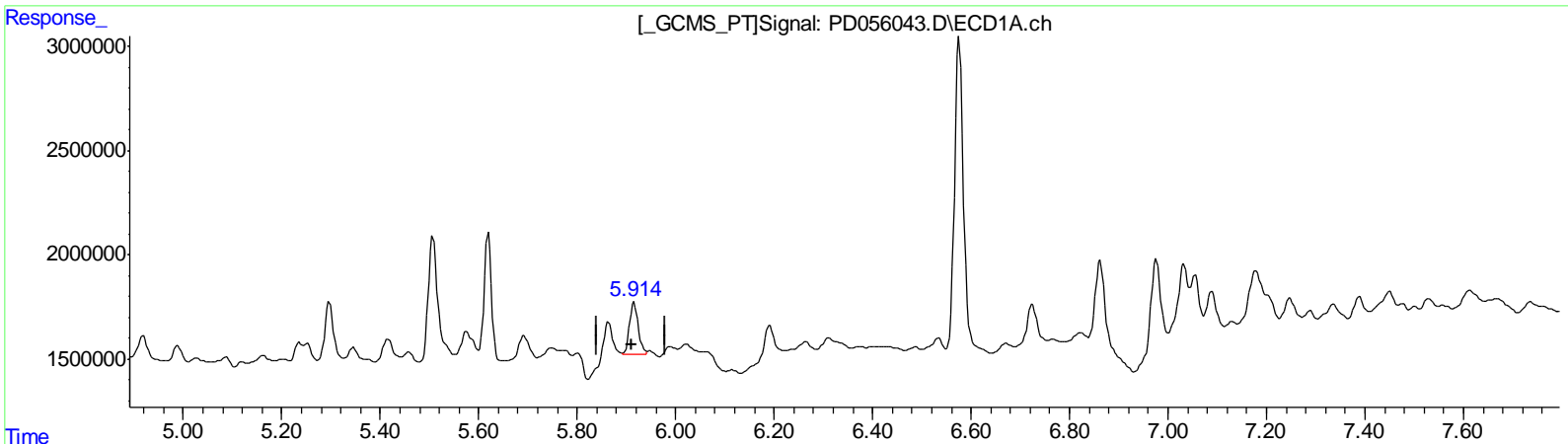
Data Path : Z:\pestpcbsrv\HPCHEM1\ECD\_D\Data\PD111519\  
 Data File : PD056043.D  
 Signal(s) : Signal #1: ECD1A.ch Signal #2: ECD2B.ch  
 Acq On : 15 Nov 2019 18:06  
 Operator : SG\AJ  
 Sample : K5783-22  
 Misc :  
 ALS Vial : 29 Sample Multiplier: 1

**Instrument :**  
 ECD\_D  
**ClientSampled :**  
 C0AZ7

**Manual Integrations**  
**APPROVED**  
 Ankita  
 11/18/2019 2:57:05 PM

Integration File signal 1: autoint1.e  
 Integration File signal 2: autoint2.e  
 Quant Time: Nov 16 02:21:24 2019  
 Quant Method : Z:\pestpcbsrv\HPCHEM1\ECD\_D\Method\PD110319CLP.M  
 Quant Title : GC Extractables  
 QLast Update : Sat Nov 02 07:20:38 2019  
 Response via : Initial Calibration  
 Integrator: ChemStation

Volume Inj. : 1 µl  
 Signal #1 Phase : ZB-MR2 Signal #2 Phase: ZB-MR1  
 Signal #1 Info : 30M x 0.32mm x0.2 Signal #2 Info : 30M x 0.32mm x 0.50µm



QEdit

(16) 4,4'-DDD (A)  
 5.914min 4.374 ng/ml m  
 response 3089235

(16) 4,4'-DDD #2 (A)  
 6.769min 3.663 ng/ml m  
 response 4089964

(+) = Expected Retention Time



Data Path : Z:\pestpcbsrv\HPCHEM1\ECD\_D\Data\PD111519\  
 Data File : PD056043.D  
 Signal(s) : Signal #1: ECD1A.ch Signal #2: ECD2B.ch  
 Acq On : 15 Nov 2019 18:06  
 Operator : SG\AJ  
 Sample : K5783-22  
 Misc :  
 ALS Vial : 29 Sample Multiplier: 1

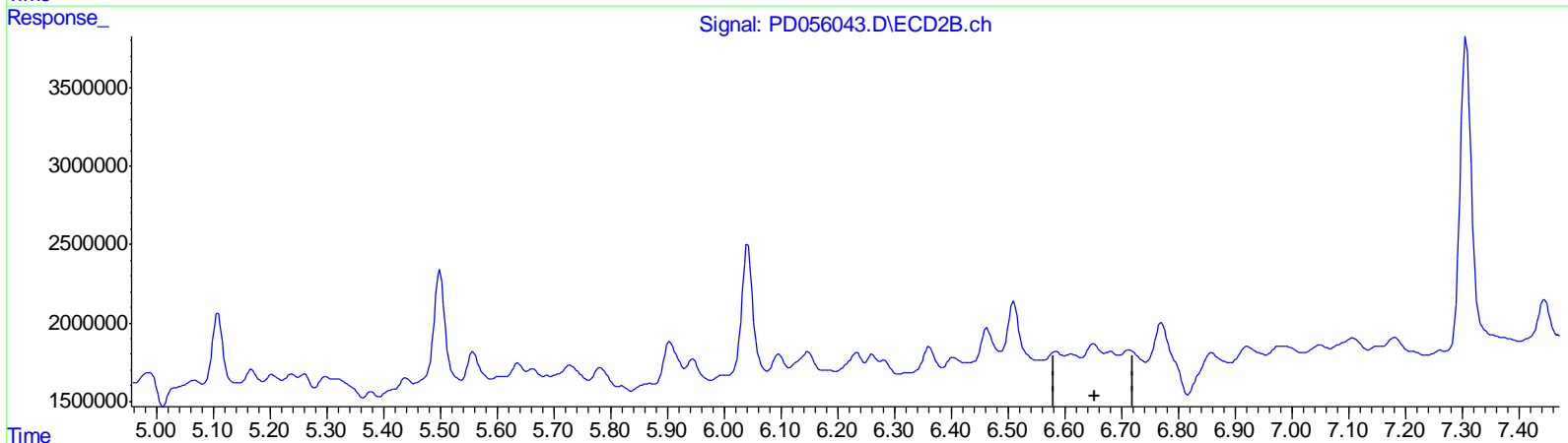
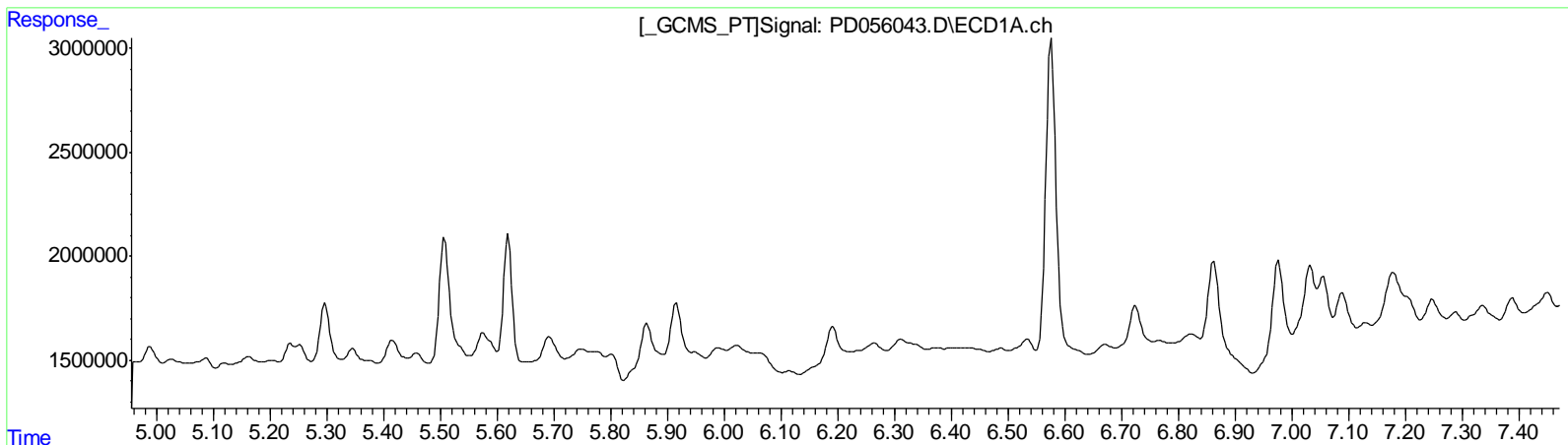
Instrument :  
 ECD\_D  
 ClientSampled :  
 C0AZ7

Manual Integrations  
 APPROVED

Ankita  
 11/18/2019 2:57:05 PM

Integration File signal 1: autoint1.e  
 Integration File signal 2: autoint2.e  
 Quant Time: Nov 16 02:21:24 2019  
 Quant Method : Z:\pestpcbsrv\HPCHEM1\ECD\_D\Method\PD110319CLP.M  
 Quant Title : GC Extractables  
 QLast Update : Sat Nov 02 07:20:38 2019  
 Response via : Initial Calibration  
 Integrator: ChemStation

Volume Inj. : 1 µl  
 Signal #1 Phase : ZB-MR2 Signal #2 Phase: ZB-MR1  
 Signal #1 Info : 30M x 0.32mm x0.2 Signal #2 Info : 30M x 0.32mm x 0.50µm



QEdit

(14) Endrin (MA)  
 0.000min 0.000 ng/ml  
 response 0

(14) Endrin #2 (MA)  
 0.000min 0.000 ng/ml  
 response 0

(+) = Expected Retention Time

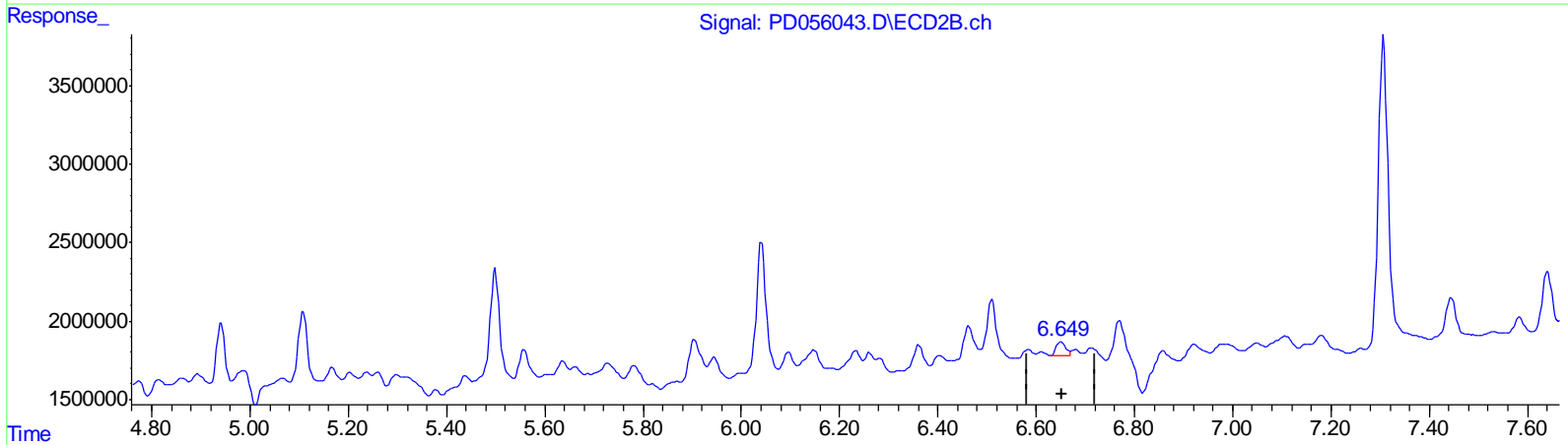
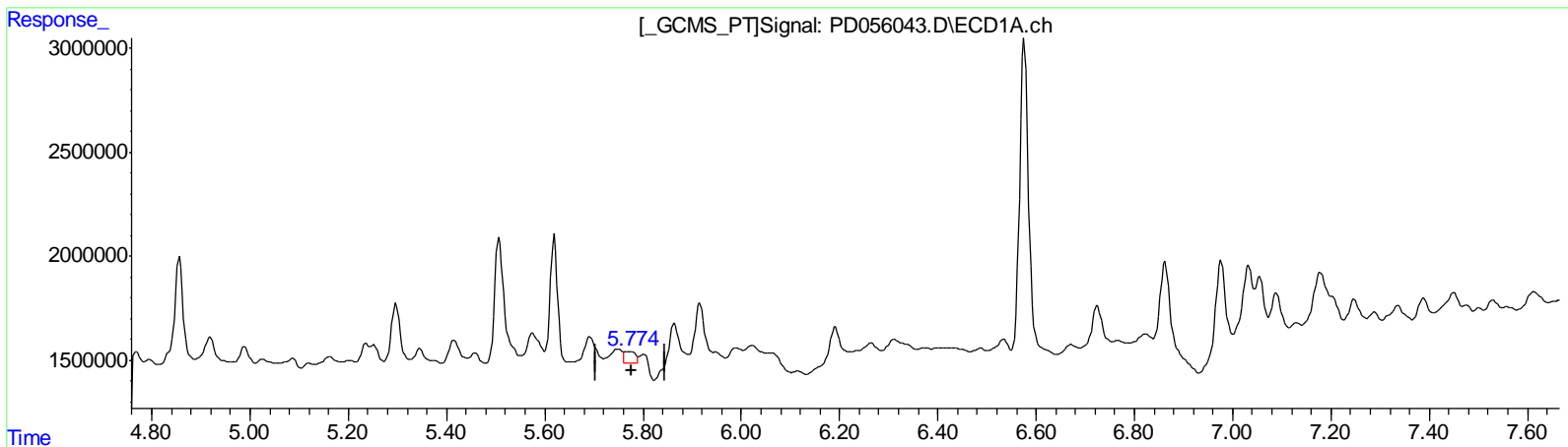
Data Path : Z:\pestpcbsrv\HPCHEM1\ECD\_D\Data\PD111519\  
 Data File : PD056043.D  
 Signal(s) : Signal #1: ECD1A.ch Signal #2: ECD2B.ch  
 Acq On : 15 Nov 2019 18:06  
 Operator : SG\AJ  
 Sample : K5783-22  
 Misc :  
 ALS Vial : 29 Sample Multiplier: 1

**Instrument :**  
 ECD\_D  
**ClientSampled :**  
 C0AZ7

**Manual Integrations**  
**APPROVED**  
 Ankita  
 11/18/2019 2:57:05 PM

Integration File signal 1: autoint1.e  
 Integration File signal 2: autoint2.e  
 Quant Time: Nov 16 02:21:24 2019  
 Quant Method : Z:\pestpcbsrv\HPCHEM1\ECD\_D\Method\PD110319CLP.M  
 Quant Title : GC Extractables  
 QLast Update : Sat Nov 02 07:20:38 2019  
 Response via : Initial Calibration  
 Integrator: ChemStation

Volume Inj. : 1 µl  
 Signal #1 Phase : ZB-MR2 Signal #2 Phase: ZB-MR1  
 Signal #1 Info : 30M x 0.32mm x0.2 Signal #2 Info : 30M x 0.32mm x 0.50µm



QEdit

(14) Endrin (MA)  
 5.774min 1.136 ng/ml m  
 response 911484

(14) Endrin #2 (MA)  
 6.649min 1.017 ng/ml m  
 response 1170340

(+) = Expected Retention Time

Data Path : Z:\pestpcbsrv\HPCHEM1\ECD\_D\Data\PD111519\  
 Data File : PD056043.D  
 Signal(s) : Signal #1: ECD1A.ch Signal #2: ECD2B.ch  
 Acq On : 15 Nov 2019 18:06  
 Operator : SG\AJ  
 Sample : K5783-22  
 Misc :  
 ALS Vial : 29 Sample Multiplier: 1

Instrument :  
 ECD\_D  
 Client Sampled :  
 C0AZ7

Integration File signal 1: autoint1.e  
 Integration File signal 2: autoint2.e  
 Quant Time: Nov 16 02:21:24 2019  
 Quant Method : Z:\pestpcbsrv\HPCHEM1\ECD\_D\Method\PD110319CLP.M  
 Quant Title : GC Extractables  
 QLast Update : Sat Nov 02 07:20:38 2019  
 Response via : Initial Calibration  
 Integrator: ChemStation

Manual Integrations  
 APPROVED  
 Ankita  
 11/18/2019 2:57:05 PM

Volume Inj. : 1 µl  
 Signal #1 Phase : ZB-MR2 Signal #2 Phase: ZB-MR1  
 Signal #1 Info : 30M x 0.32mm x0.2 Signal #2 Info : 30M x 0.32mm x 0.50µm

Compound	RT#1	RT#2	Resp#1	Resp#2	ng/ml	ng/ml
-----						
System Monitoring Compounds						
1) SA Tetrachlo...	3.287	3.962	13455315	14506951	17.874m	13.843
27) SA Decachlor...	7.963	8.996	21006470	25372432	25.771	22.344m
Target Compounds						
3) MA gamma-BHC...	3.997	4.611	6720544	6056218	6.570	4.299m#
14) MA Endrin	5.774	6.649	911484	1170340	1.136m	1.017m
16) A 4,4'-DDD	5.914	6.769	3089235	4089964	4.374m	3.663m
-----						

AS  
 11/20/19

(f)=RT Delta > 1/2 Window (#)=Amounts differ by > 25% (m)=manual int.