

Data Path : Z:\pestpcbsrv\HPCHEM1\ECD_D\Data\PD111618\
 Data File : PD050346.D
 Signal(s) : Signal #1: ECD1A.CH Signal #2: ECD2B.CH
 Acq On : 15 Nov 2018 23:09
 Operator : AJ\SJ
 Sample : PSTDICC025
 Misc :
 ALS Vial : 26 Sample Multiplier: 1

Instrument :
 ECD_D
 ClientSampleId :

Integration File signal 1: autoint1.e
 Integration File signal 2: autoint2.e
 Quant Time: Nov 16 02:26:05 2018
 Quant Method : Z:\pestpcbsrv\HPCHEM1\ECD_D\Method\PD111618.M
 Quant Title : GC Extractables
 QLast Update : Fri Nov 16 02:23:40 2018
 Response via : Initial Calibration
 Integrator: ChemStation 6890 Scale Mode: Large solvent peaks clipped

Volume Inj. : 2 µl
 Signal #1 Phase : ZB-MR2 Signal #2 Phase: ZB-MR1
 Signal #1 Info : 30M x 0.32mm x0.2 Signal #2 Info : 30M x 0.32mm x 0.50µm

Compound	RT#1	RT#2	Resp#1	Resp#2	ng/ml	ng/ml

System Monitoring Compounds						
1) SA Tetrachlo...	3.228	4.044	35307373	706.2E6	24.062	26.189
28) SA Decachlor...	7.837	9.152	37743780	522.1E6	26.819	27.243
Target Compounds						
2) A alpha-BHC	3.649	4.436	55532547	1075.2E6	22.900	25.749
3) MA gamma-BHC...	3.918	4.723	53390583	965.9E6	23.377	25.817
4) MA Heptachlor	4.196	5.237	52569317	966.8E6	23.162	26.119
5) MB Aldrin	4.429	5.544	54455774	909.0E6	23.161	25.938
6) B beta-BHC	4.163	4.892	22593259	426.8E6	24.581	26.395
7) B delta-BHC	4.352	5.111	51541372	944.9E6	22.750	25.786
8) B Heptachlo...	4.857	5.932	50900655	808.2E6	23.482	26.144
9) A Endosulfan I	5.179	6.290	48408832	725.2E6	23.636	26.187
10) B gamma-Chl...	5.075	6.166	52547981	803.9E6	23.398	25.911
11) B alpha-Chl...	5.131	6.239	52288367	772.6E6	23.661	25.947
12) B 4,4'-DDE	5.301	6.395	48554598	742.1E6	22.954	25.620
13) MA Dieldrin	5.414	6.548	52422441	762.2E6	23.122	25.845
14) MA Endrin	5.662	6.767	45866617	608.7E6	23.537	25.782
15) B Endosulfa...	5.932	6.975	46003587	619.1E6	23.874	26.000
16) A 4,4'-DDD	5.802	6.886	41188539	580.3E6	23.610	25.576
17) MA 4,4'-DDT	6.035	7.186	41933884	520.0E6	23.430	24.937
18) B Endrin al...	6.099	7.099	36543419	517.5E6	24.076	26.157
19) B Endosulfa...	6.307	7.323	44968319	618.8E6	24.315	26.216
20) A Methoxychlor	6.581	7.644	23847459	285.2E6	25.460	25.931
21) B Endrin ke...	6.783	7.797	52883355	588.6E6	24.632	25.926

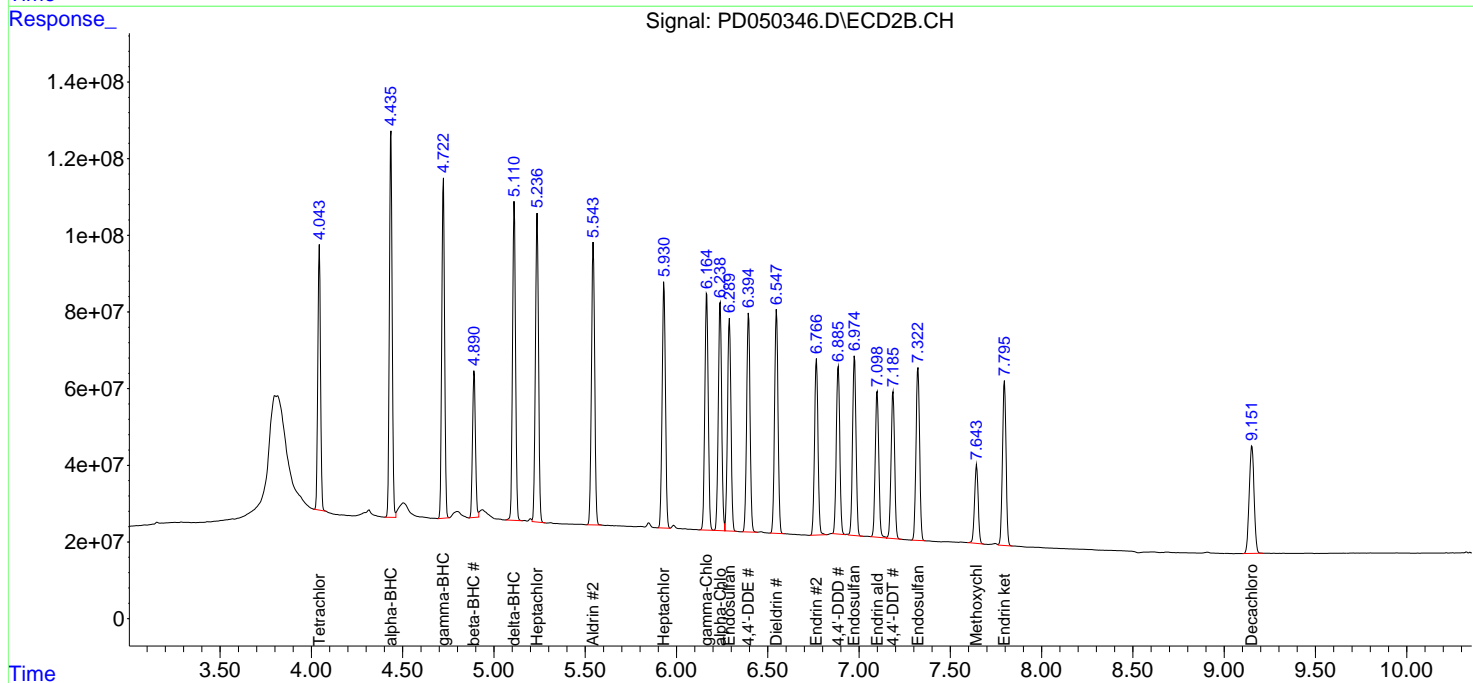
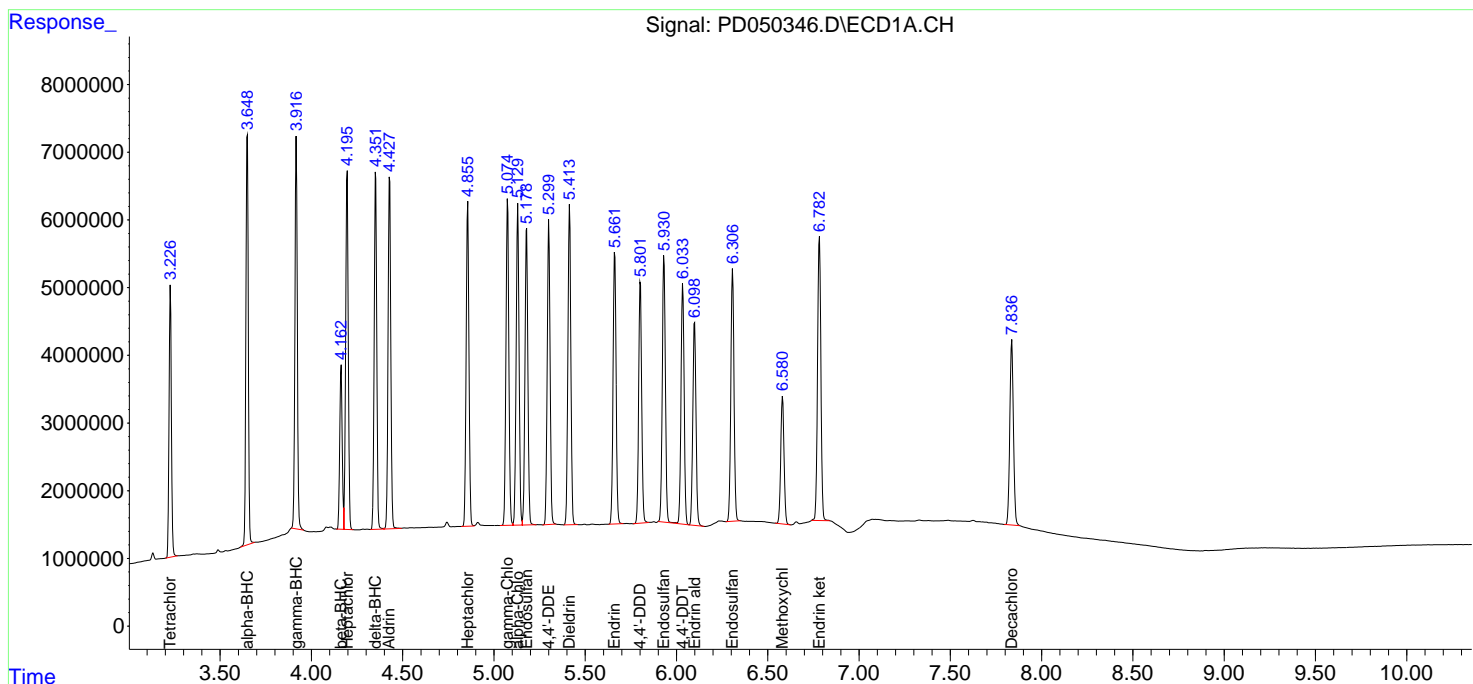
(f)=RT Delta > 1/2 Window (#)=Amounts differ by > 25% (m)=manual int.

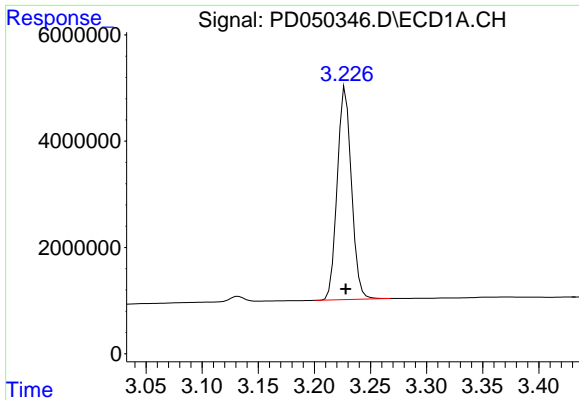
Data Path : Z:\pestpcbsrv\HPCHEM1\ECD_D\Data\PD111618\
 Data File : PD050346.D
 Signal(s) : Signal #1: ECD1A.CH Signal #2: ECD2B.CH
 Acq On : 15 Nov 2018 23:09
 Operator : AJ\SJ
 Sample : PSTDICC025
 Misc :
 ALS Vial : 26 Sample Multiplier: 1

Instrument :
 ECD_D
 ClientSampled :

Integration File signal 1: autoint1.e
 Integration File signal 2: autoint2.e
 Quant Time: Nov 16 02:26:05 2018
 Quant Method : Z:\pestpcbsrv\HPCHEM1\ECD_D\Method\PD111618.M
 Quant Title : GC Extractables
 QLast Update : Fri Nov 16 02:23:40 2018
 Response via : Initial Calibration
 Integrator: ChemStation 6890 Scale Mode: Large solvent peaks clipped

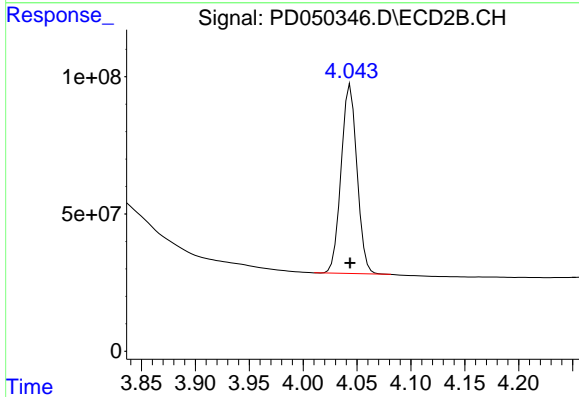
Volume Inj. : 2 µl
 Signal #1 Phase : ZB-MR2 Signal #2 Phase: ZB-MR1
 Signal #1 Info : 30M x 0.32mm x0.2 Signal #2 Info : 30M x 0.32mm x 0.50µm



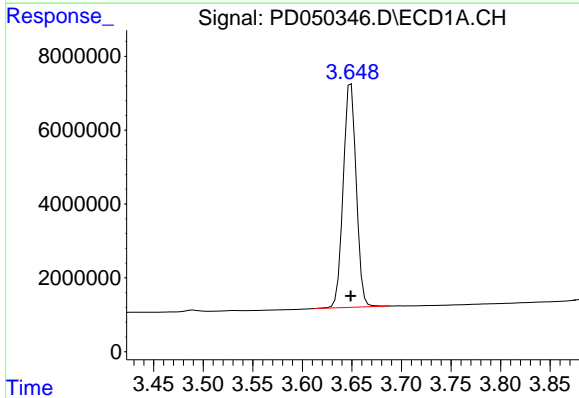


#1 Tetrachloro-m-xylene
 R.T.: 3.228 min
 Delta R.T.: 0.000 min
 Response: 35307373
 Conc: 24.06 ng/ml

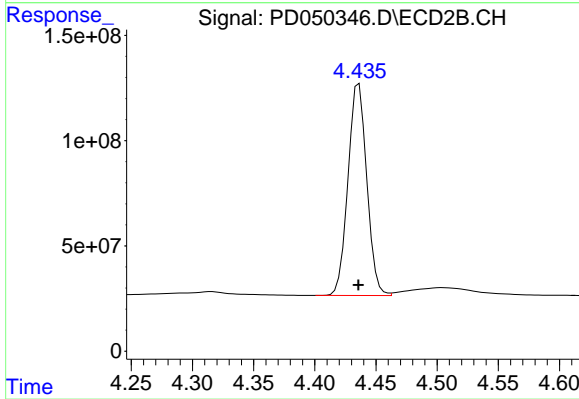
Instrument :
 ECD_D
 ClientSampleId :



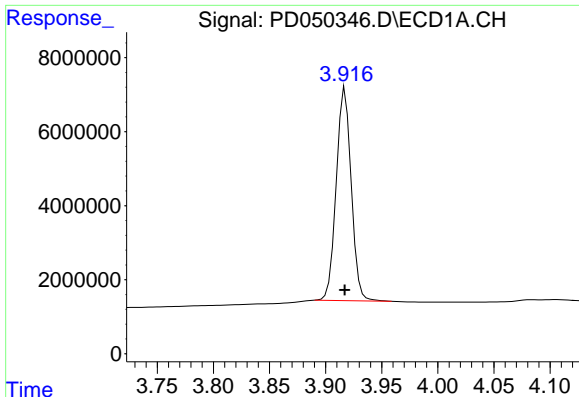
#1 Tetrachloro-m-xylene
 R.T.: 4.044 min
 Delta R.T.: 0.000 min
 Response: 706160470
 Conc: 26.19 ng/ml



#2 alpha-BHC
 R.T.: 3.649 min
 Delta R.T.: 0.000 min
 Response: 55532547
 Conc: 22.90 ng/ml

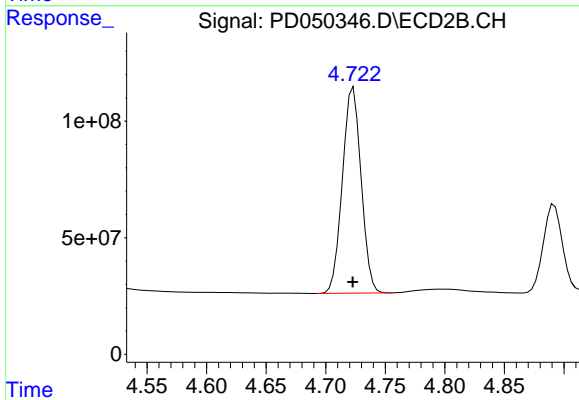


#2 alpha-BHC
 R.T.: 4.436 min
 Delta R.T.: 0.000 min
 Response: 1075218714
 Conc: 25.75 ng/ml

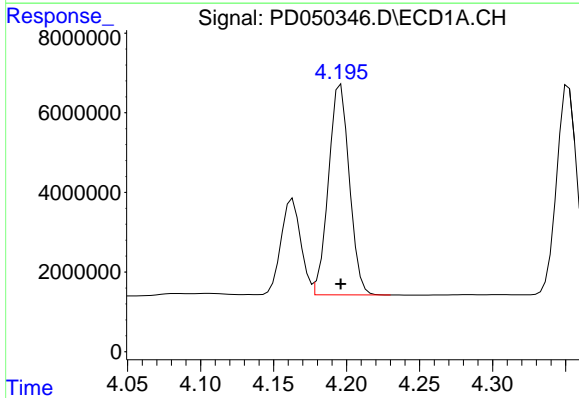


#3 gamma-BHC (Lindane)
 R.T.: 3.918 min
 Delta R.T.: 0.000 min
 Response: 53390583
 Conc: 23.38 ng/ml

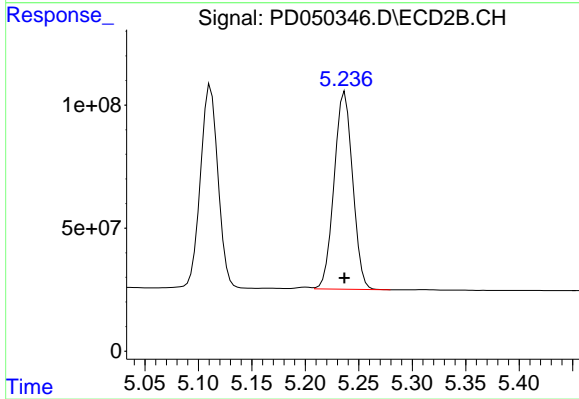
Instrument :
 ECD_D
 ClientSampled :



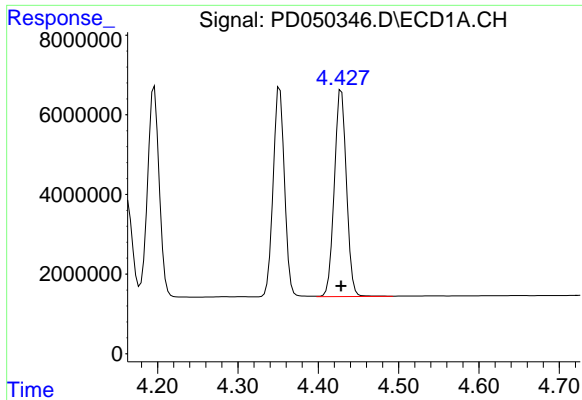
#3 gamma-BHC (Lindane)
 R.T.: 4.723 min
 Delta R.T.: 0.000 min
 Response: 965923523
 Conc: 25.82 ng/ml



#4 Heptachlor
 R.T.: 4.196 min
 Delta R.T.: 0.000 min
 Response: 52569317
 Conc: 23.16 ng/ml

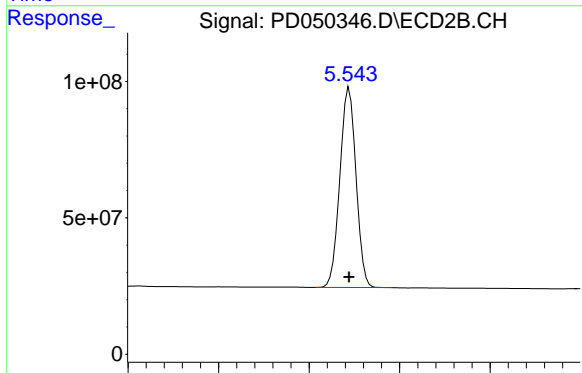


#4 Heptachlor
 R.T.: 5.237 min
 Delta R.T.: 0.000 min
 Response: 966793665
 Conc: 26.12 ng/ml

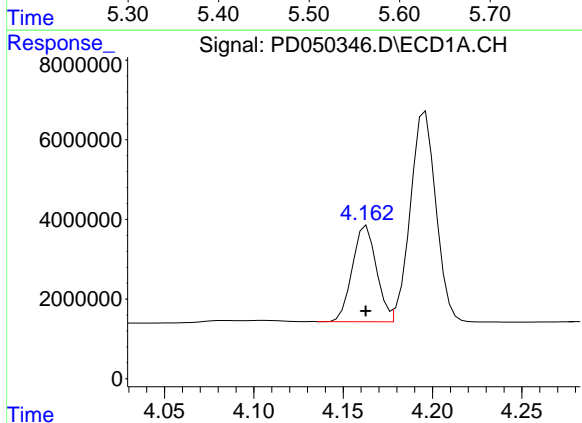


#5 Aldrin
 R.T.: 4.429 min
 Delta R.T.: 0.000 min
 Response: 54455774
 Conc: 23.16 ng/ml

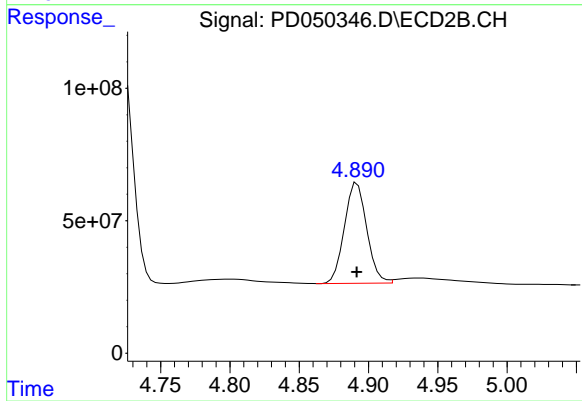
Instrument :
 ECD_D
 ClientSampled :



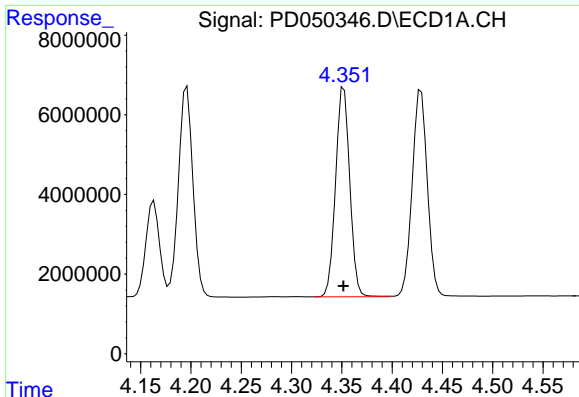
#5 Aldrin
 R.T.: 5.544 min
 Delta R.T.: 0.000 min
 Response: 908981133
 Conc: 25.94 ng/ml



#6 beta-BHC
 R.T.: 4.163 min
 Delta R.T.: 0.000 min
 Response: 22593259
 Conc: 24.58 ng/ml



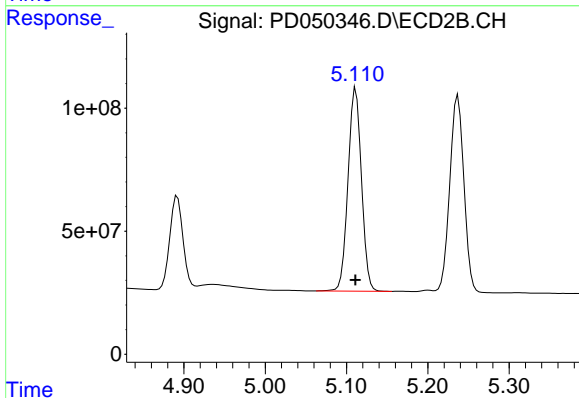
#6 beta-BHC
 R.T.: 4.892 min
 Delta R.T.: 0.000 min
 Response: 426844972
 Conc: 26.40 ng/ml



#7 delta-BHC

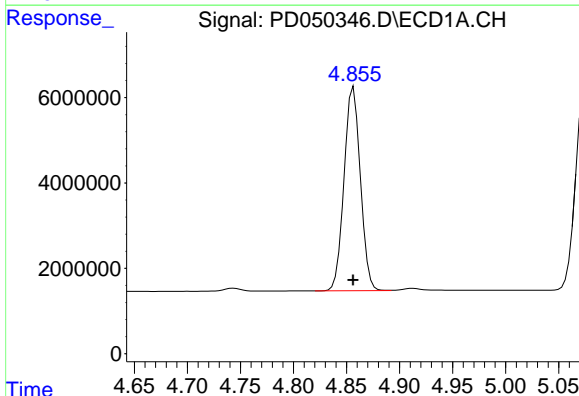
R.T.: 4.352 min
 Delta R.T.: 0.000 min
 Response: 51541372
 Conc: 22.75 ng/ml

Instrument :
 ECD_D
 ClientSampleId :



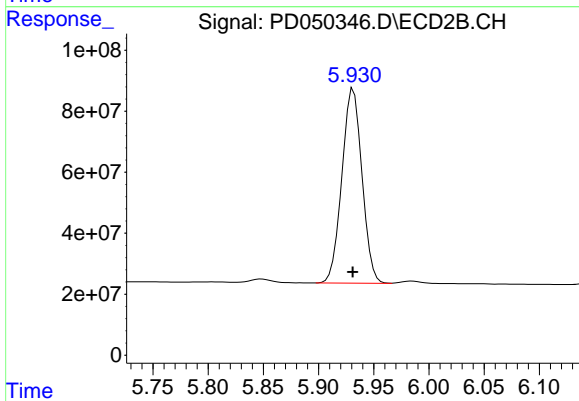
#7 delta-BHC

R.T.: 5.111 min
 Delta R.T.: 0.000 min
 Response: 944896913
 Conc: 25.79 ng/ml



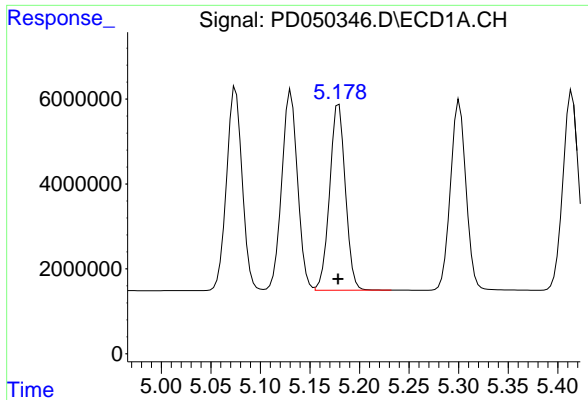
#8 Heptachlor epoxide

R.T.: 4.857 min
 Delta R.T.: 0.000 min
 Response: 50900655
 Conc: 23.48 ng/ml



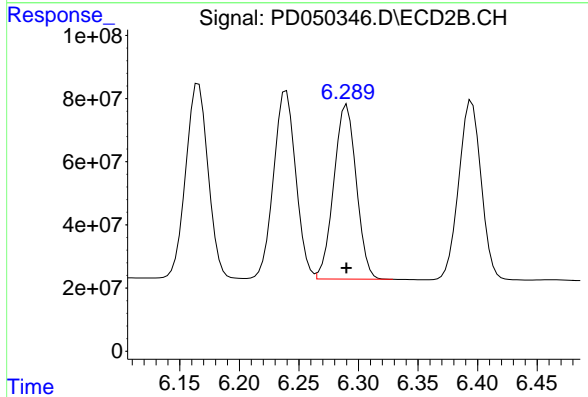
#8 Heptachlor epoxide

R.T.: 5.932 min
 Delta R.T.: 0.000 min
 Response: 808245818
 Conc: 26.14 ng/ml

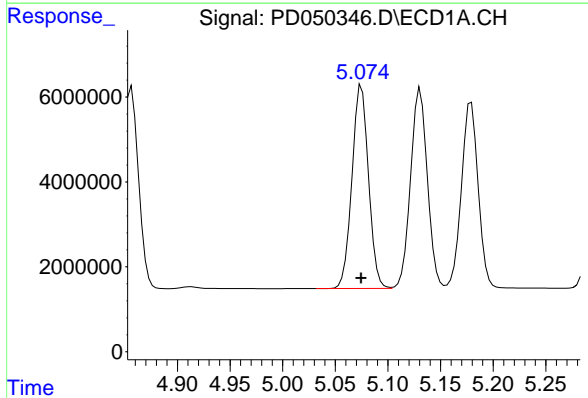


#9 Endosulfan I
 R.T.: 5.179 min
 Delta R.T.: 0.000 min
 Response: 48408832
 Conc: 23.64 ng/ml

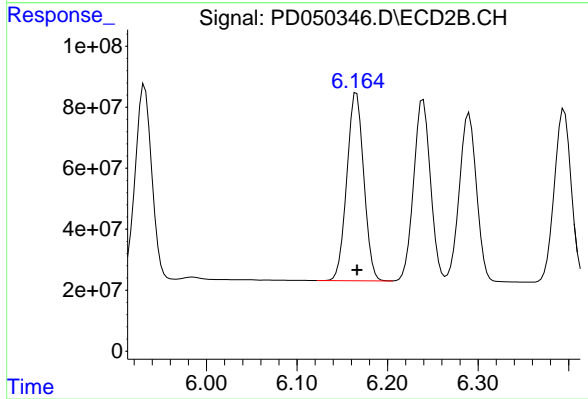
Instrument :
 ECD_D
 ClientSampleId :



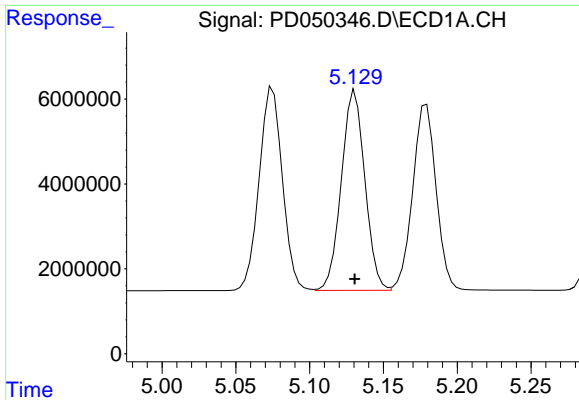
#9 Endosulfan I
 R.T.: 6.290 min
 Delta R.T.: 0.000 min
 Response: 725197588
 Conc: 26.19 ng/ml



#10 gamma-Chlordane
 R.T.: 5.075 min
 Delta R.T.: 0.000 min
 Response: 52547981
 Conc: 23.40 ng/ml



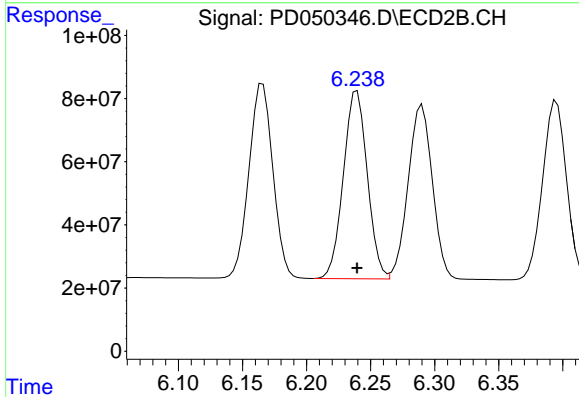
#10 gamma-Chlordane
 R.T.: 6.166 min
 Delta R.T.: 0.000 min
 Response: 803948324
 Conc: 25.91 ng/ml



#11 alpha-Chlordane

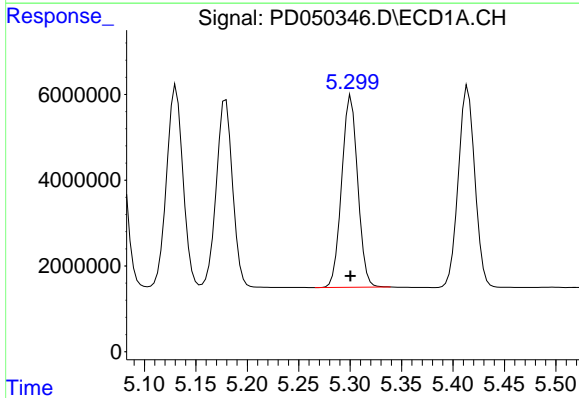
R.T.: 5.131 min
 Delta R.T.: 0.000 min
 Response: 52288367
 Conc: 23.66 ng/ml

Instrument :
 ECD_D
 ClientSampleId :



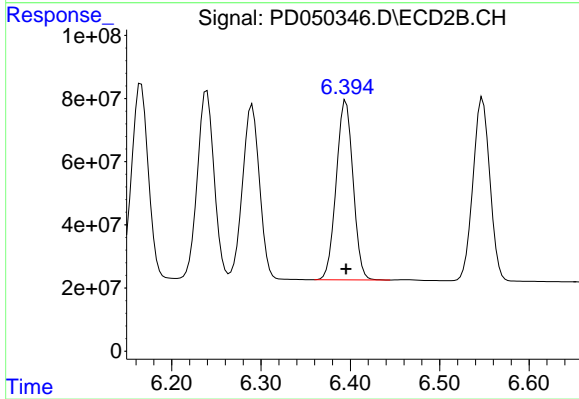
#11 alpha-Chlordane

R.T.: 6.239 min
 Delta R.T.: 0.000 min
 Response: 772616947
 Conc: 25.95 ng/ml



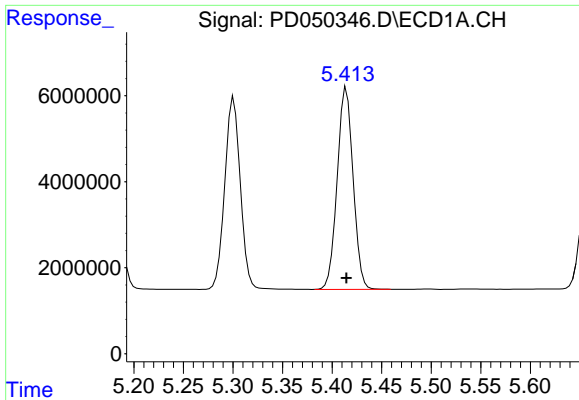
#12 4,4'-DDE

R.T.: 5.301 min
 Delta R.T.: 0.000 min
 Response: 48554598
 Conc: 22.95 ng/ml



#12 4,4'-DDE

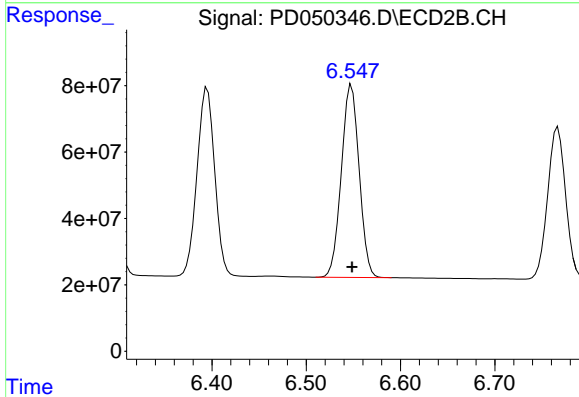
R.T.: 6.395 min
 Delta R.T.: 0.000 min
 Response: 742099700
 Conc: 25.62 ng/ml



#13 Dieldrin

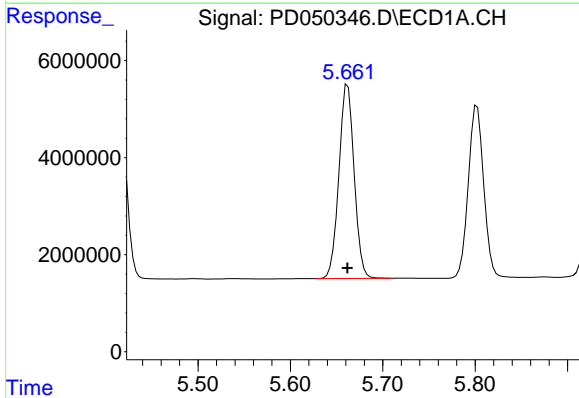
R.T.: 5.414 min
 Delta R.T.: 0.000 min
 Response: 52422441
 Conc: 23.12 ng/ml

Instrument :
 ECD_D
 ClientSampled :



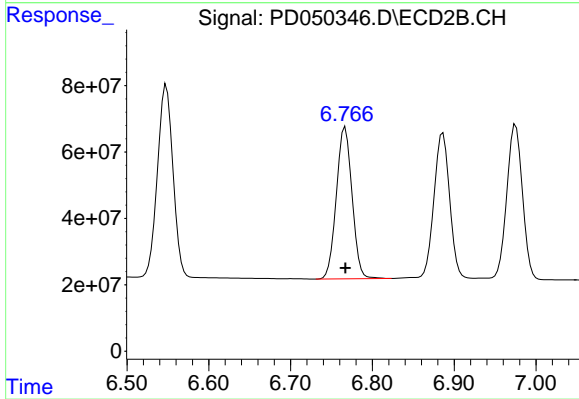
#13 Dieldrin

R.T.: 6.548 min
 Delta R.T.: 0.000 min
 Response: 762240424
 Conc: 25.84 ng/ml



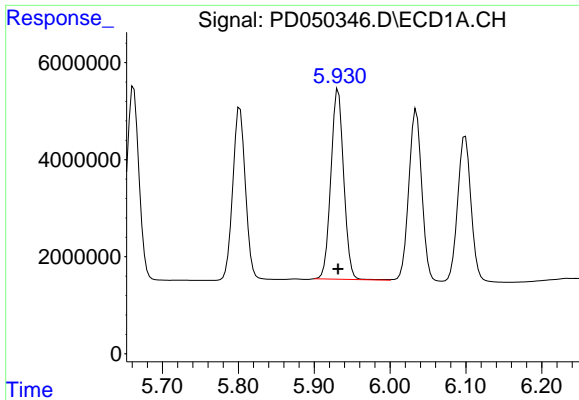
#14 Endrin

R.T.: 5.662 min
 Delta R.T.: 0.000 min
 Response: 45866617
 Conc: 23.54 ng/ml



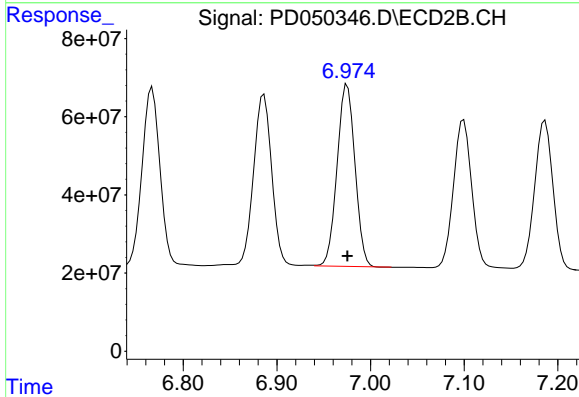
#14 Endrin

R.T.: 6.767 min
 Delta R.T.: 0.000 min
 Response: 608651824
 Conc: 25.78 ng/ml

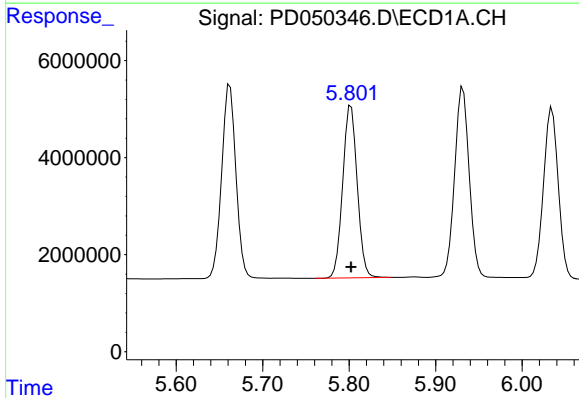


#15 Endosulfan II
 R.T.: 5.932 min
 Delta R.T.: 0.000 min
 Response: 46003587
 Conc: 23.87 ng/ml

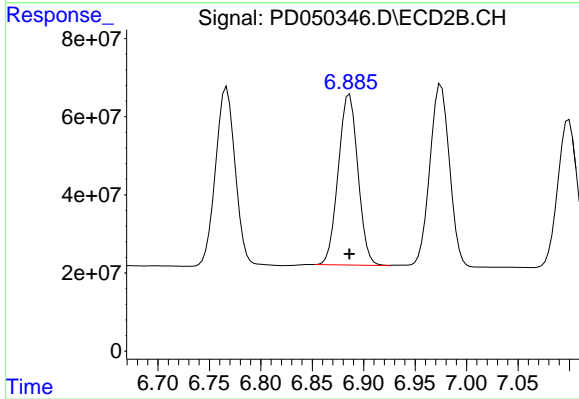
Instrument :
 ECD_D
 ClientSampled :



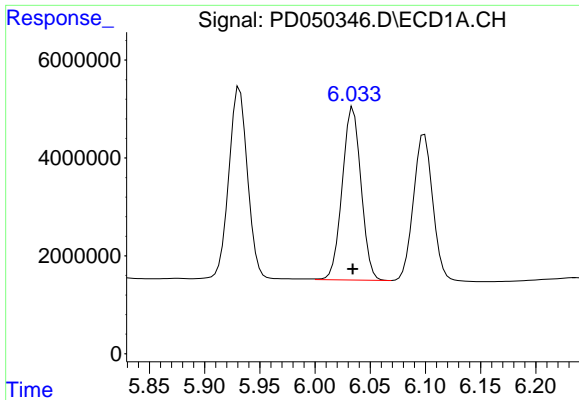
#15 Endosulfan II
 R.T.: 6.975 min
 Delta R.T.: 0.000 min
 Response: 619098857
 Conc: 26.00 ng/ml



#16 4,4'-DDD
 R.T.: 5.802 min
 Delta R.T.: 0.000 min
 Response: 41188539
 Conc: 23.61 ng/ml



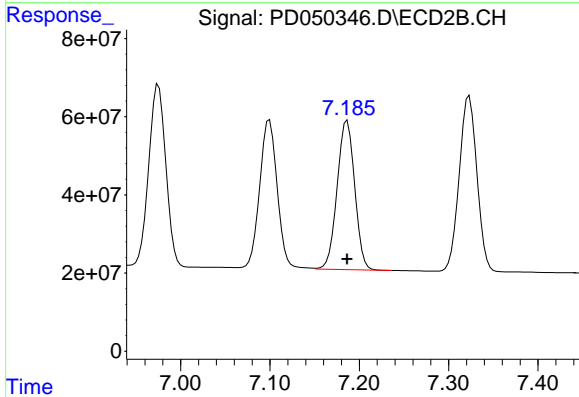
#16 4,4'-DDD
 R.T.: 6.886 min
 Delta R.T.: 0.000 min
 Response: 580300610
 Conc: 25.58 ng/ml



#17 4,4'-DDT

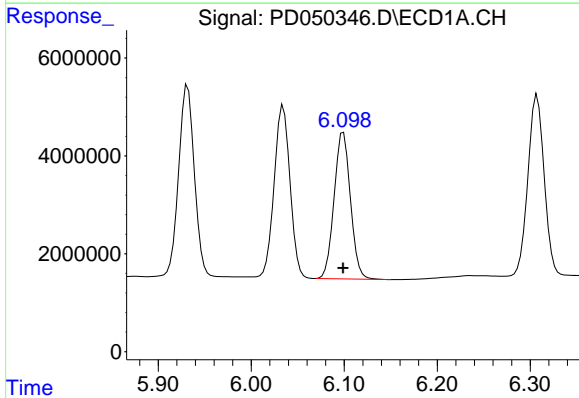
R.T.: 6.035 min
 Delta R.T.: 0.000 min
 Response: 41933884
 Conc: 23.43 ng/ml

Instrument :
 ECD_D
 ClientSampleId :



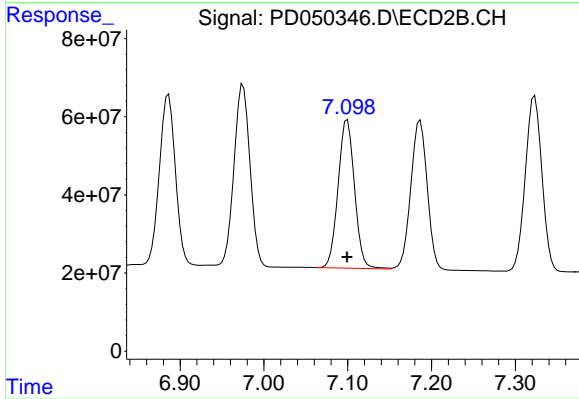
#17 4,4'-DDT

R.T.: 7.186 min
 Delta R.T.: 0.000 min
 Response: 520045145
 Conc: 24.94 ng/ml



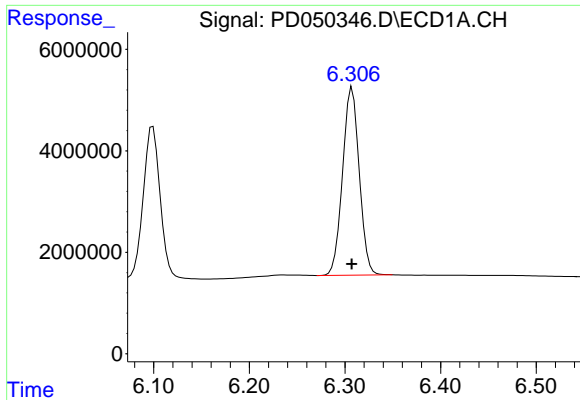
#18 Endrin aldehyde

R.T.: 6.099 min
 Delta R.T.: 0.000 min
 Response: 36543419
 Conc: 24.08 ng/ml



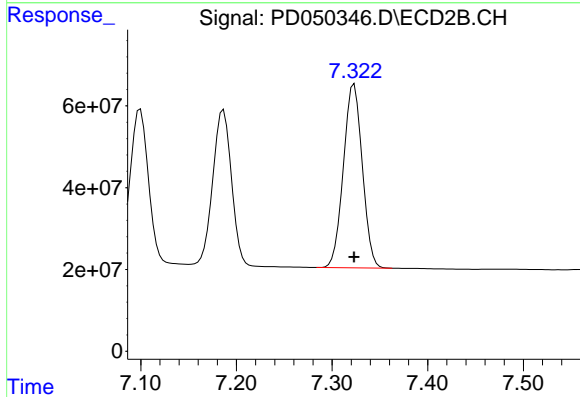
#18 Endrin aldehyde

R.T.: 7.099 min
 Delta R.T.: 0.000 min
 Response: 517509145
 Conc: 26.16 ng/ml

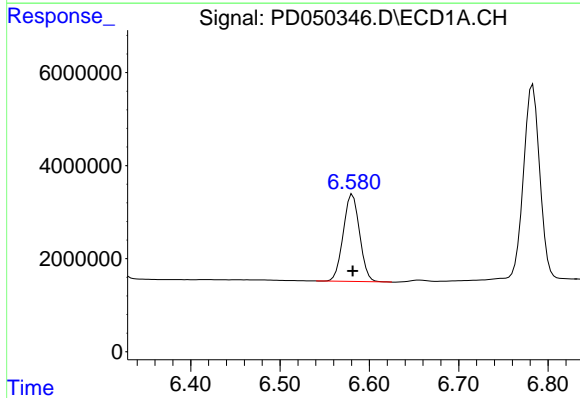


#19 Endosulfan Sulfate
 R.T.: 6.307 min
 Delta R.T.: 0.000 min
 Response: 44968319
 Conc: 24.32 ng/ml

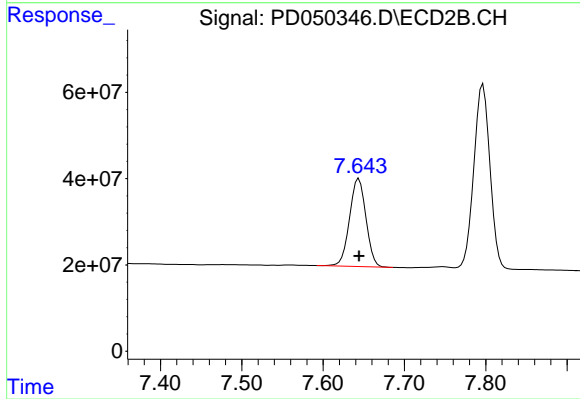
Instrument :
 ECD_D
 ClientSampleId :



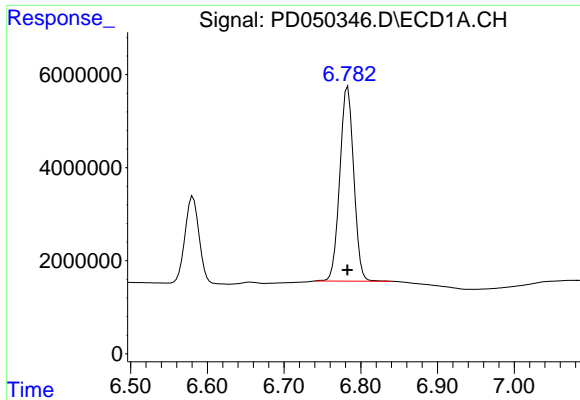
#19 Endosulfan Sulfate
 R.T.: 7.323 min
 Delta R.T.: 0.000 min
 Response: 618804073
 Conc: 26.22 ng/ml



#20 Methoxychlor
 R.T.: 6.581 min
 Delta R.T.: 0.000 min
 Response: 23847459
 Conc: 25.46 ng/ml



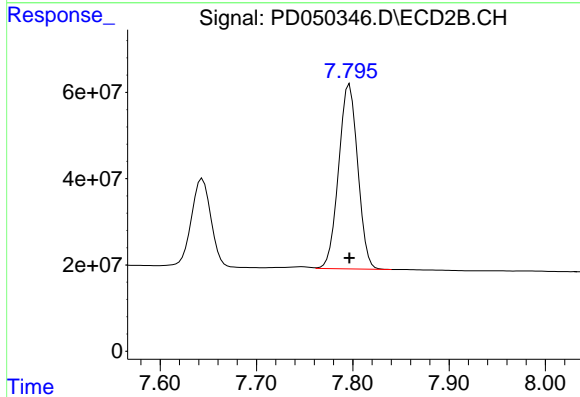
#20 Methoxychlor
 R.T.: 7.644 min
 Delta R.T.: 0.000 min
 Response: 285201445
 Conc: 25.93 ng/ml



#21 Endrin ketone

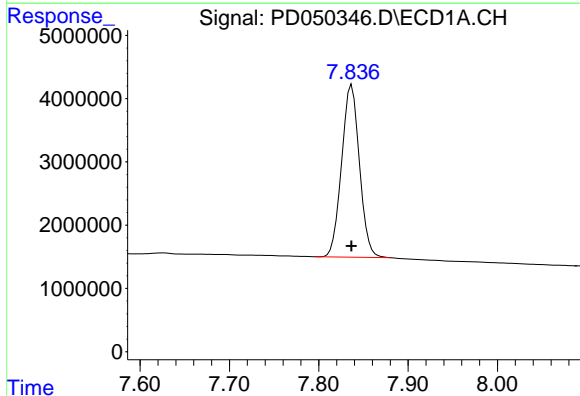
R.T.: 6.783 min
 Delta R.T.: 0.000 min
 Response: 52883355
 Conc: 24.63 ng/ml

Instrument :
 ECD_D
 ClientSampled :



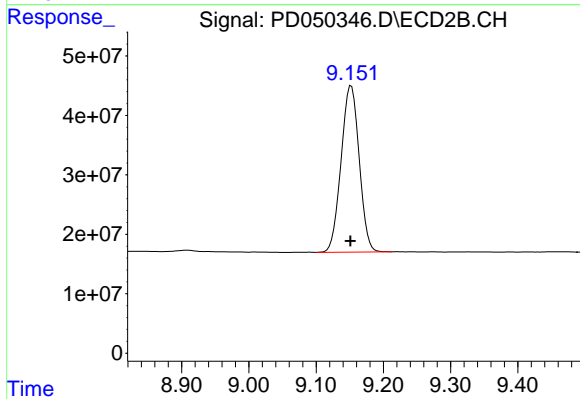
#21 Endrin ketone

R.T.: 7.797 min
 Delta R.T.: 0.000 min
 Response: 588639871
 Conc: 25.93 ng/ml



#28 Decachlorobiphenyl

R.T.: 7.837 min
 Delta R.T.: 0.000 min
 Response: 37743780
 Conc: 26.82 ng/ml



#28 Decachlorobiphenyl

R.T.: 9.152 min
 Delta R.T.: 0.001 min
 Response: 522100001
 Conc: 27.24 ng/ml