

Data Path : Z:\pestpcbsrv\HPCHEM1\ECD_D\Data\PD111618\
 Data File : PD050377.D
 Signal(s) : Signal #1: ECD1A.CH Signal #2: ECD2B.CH
 Acq On : 16 Nov 2018 6:20
 Operator : AJ\SJ
 Sample : J5939-02MS
 Misc :
 ALS Vial : 51 Sample Multiplier: 1

Instrument :
 ECD_D
 ClientSampled :

Integration File signal 1: autoint1.e
 Integration File signal 2: autoint2.e
 Quant Time: Nov 16 06:59:33 2018
 Quant Method : Z:\pestpcbsrv\HPCHEM1\ECD_D\Method\PD111618.M
 Quant Title : GC Extractables
 QLast Update : Fri Nov 16 02:59:21 2018
 Response via : Initial Calibration
 Integrator: ChemStation 6890 Scale Mode: Large solvent peaks clipped

Volume Inj. : 2 µl
 Signal #1 Phase : ZB-MR2 Signal #2 Phase: ZB-MR1
 Signal #1 Info : 30M x 0.32mm x0.2 Signal #2 Info : 30M x 0.32mm x 0.50µm

Compound	RT#1	RT#2	Resp#1	Resp#2	ng/ml	ng/ml
System Monitoring Compounds						
1) SA Tetrachlo...	3.228	4.044	29905989	561.6E6	20.551	20.388
28) SA Decachlor...	7.837	9.154	18532958	211.6E6	12.519	10.454
Target Compounds						
2) A alpha-BHC	3.650	4.437	126.4E6	2105.6E6	53.845	49.611
3) MA gamma-BHC...	3.918	4.724	122.7E6	1901.3E6	52.596	49.977
4) MA Heptachlor	4.197	5.238	110.0E6	1680.0E6	49.875	44.327
5) MB Aldrin	4.430	5.546	105.7E6	1530.5E6	46.121	42.800
6) B beta-BHC	4.164	4.893	48974253	813.7E6	53.568	49.043
7) B delta-BHC	4.353	5.112	109.5E6	1668.7E6	50.238	44.697
8) B Heptachlo...	4.858	5.933	114.3E6	1525.1E6	53.783	47.982
9) A Endosulfan I	5.180	6.292	107.0E6	1352.4E6	53.125	47.647
10) B gamma-Chl...	5.076	6.168	110.2E6	1422.3E6	50.009	44.880
11) B alpha-Chl...	5.132	6.242	109.5E6	1373.7E6	50.232	45.183
12) B 4,4'-DDE	5.302	6.397	94763197	1203.3E6	46.239	40.923
13) MA Dieldrin	5.416	6.550	118.2E6	1441.3E6	53.533	47.831
14) MA Endrin	5.663	6.769	101.7E6	1095.1E6	52.934	45.435
15) B Endosulfa...	5.934	6.978	102.9E6	1174.3E6	53.989	48.112
16) A 4,4'-DDD	5.804	6.888	89743960	1063.5E6	52.358	46.573
17) MA 4,4'-DDT	6.036	7.189	84169542	881.8E6	47.502	42.725
18) B Endrin al...	6.101	7.102	82256237	948.2E6	54.259	46.890
19) B Endosulfa...	6.309	7.326	99563711	1131.8E6	53.678	46.457
20) A Methoxychlor	6.583	7.647	51396753	511.5E6	53.846	45.998
21) B Endrin ke...	6.784	7.799	123.8E6	1137.5E6	57.290	49.078
23) Chlordane-1	4.083	5.112	511990	1668.7E6	7.601	1205.552 #
24) Chlordane-2	0.000	5.546	0	1530.5E6	N.D.	1226.937 #
25) Chlordane-3	5.076	6.168	110.2E6	1422.3E6	474.298	353.057 #
26) Chlordane-4	5.132	6.242	109.5E6	1373.7E6	491.618	300.089 #
27) Chlordane-5	5.934	7.050	102.9E6	907700	1354.255	0.993 #

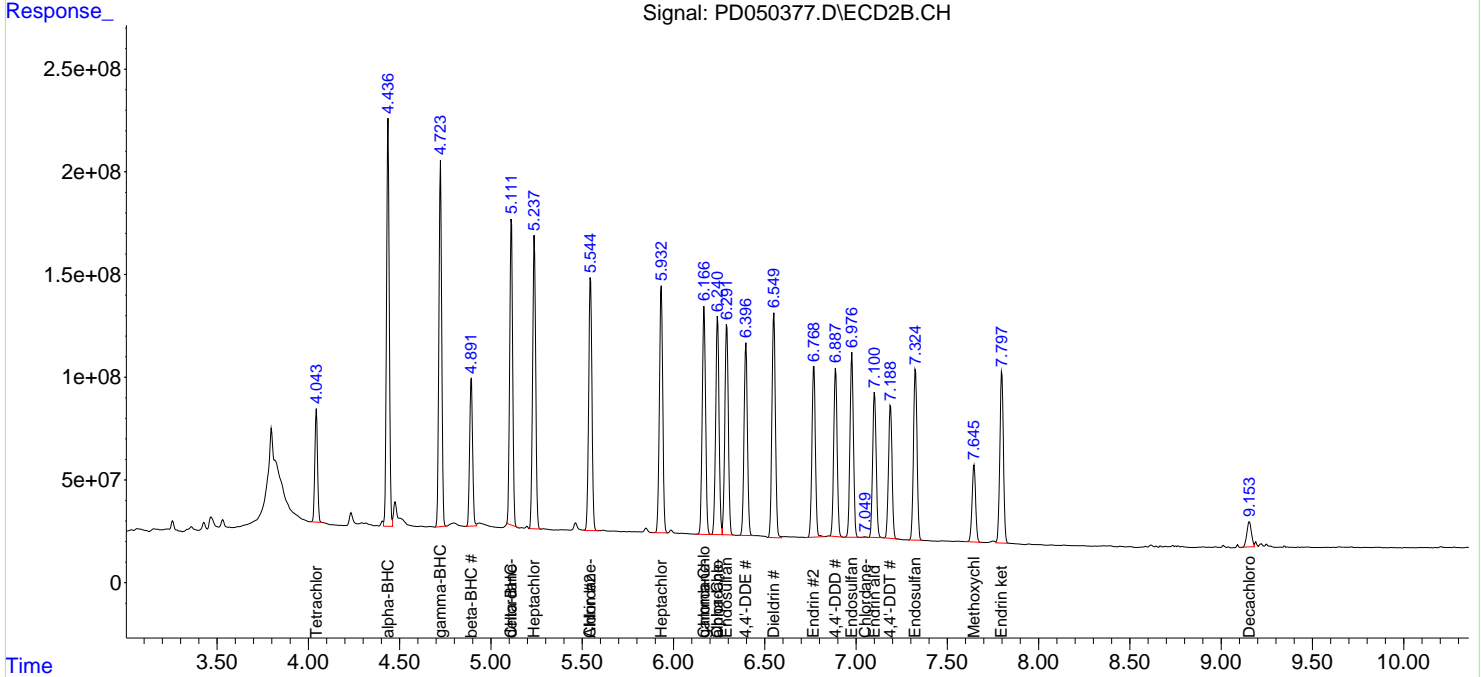
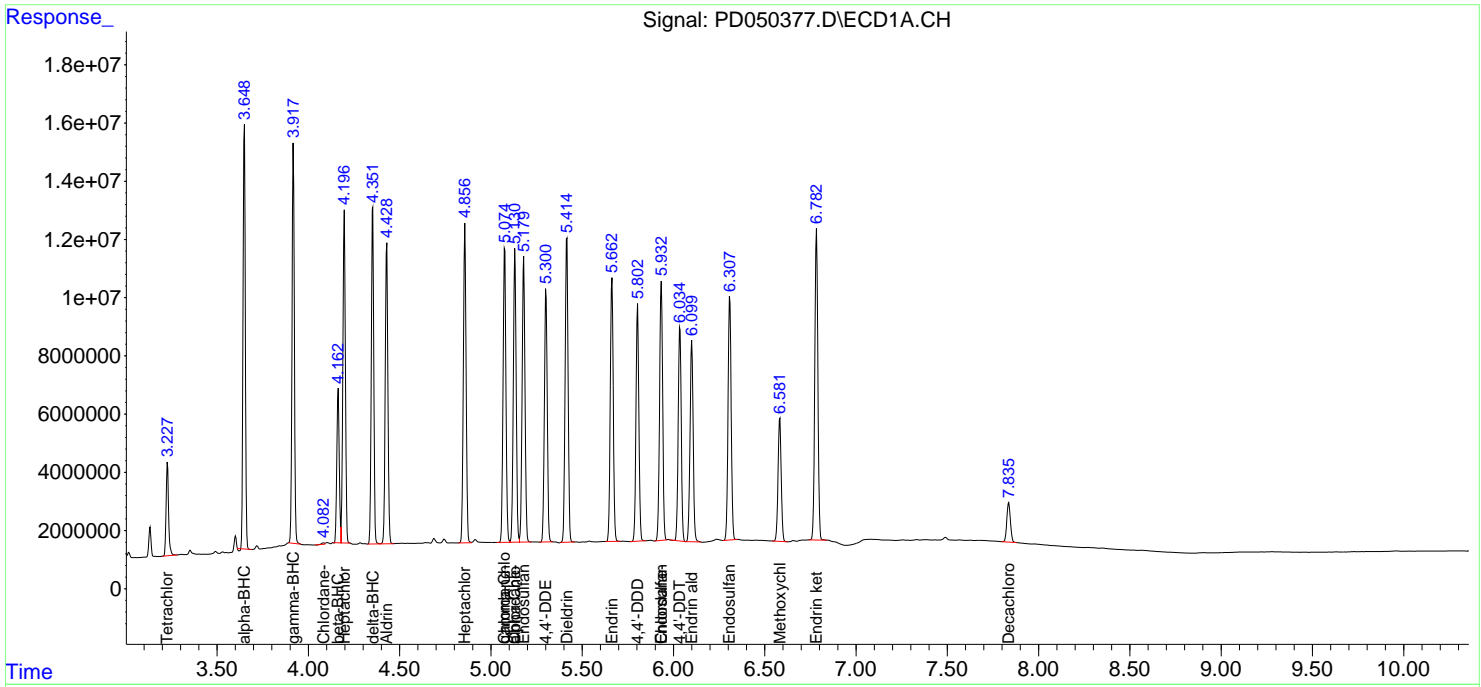
(f)=RT Delta > 1/2 Window (#)=Amounts differ by > 25% (m)=manual int.

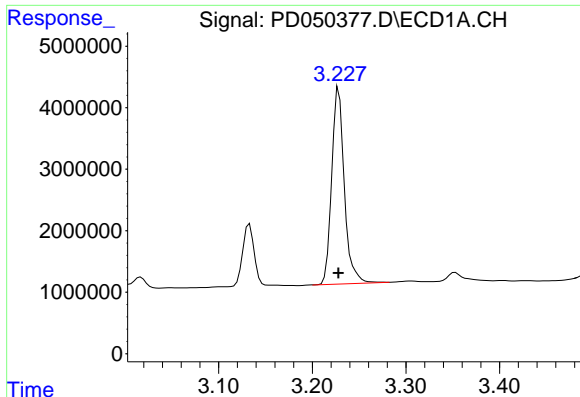
Data Path : Z:\pestpcbsrv\HPCHEM1\ECD_D\Data\PD111618\
 Data File : PD050377.D
 Signal(s) : Signal #1: ECD1A.CH Signal #2: ECD2B.CH
 Acq On : 16 Nov 2018 6:20
 Operator : AJ\SJ
 Sample : J5939-02MS
 Misc :
 ALS Vial : 51 Sample Multiplier: 1

Instrument :
 ECD_D
 ClientSampled :

Integration File signal 1: autoint1.e
 Integration File signal 2: autoint2.e
 Quant Time: Nov 16 06:59:33 2018
 Quant Method : Z:\pestpcbsrv\HPCHEM1\ECD_D\Method\PD111618.M
 Quant Title : GC Extractables
 QLast Update : Fri Nov 16 02:59:21 2018
 Response via : Initial Calibration
 Integrator: ChemStation 6890 Scale Mode: Large solvent peaks clipped

Volume Inj. : 2 µl
 Signal #1 Phase : ZB-MR2 Signal #2 Phase: ZB-MR1
 Signal #1 Info : 30M x 0.32mm x0.2 Signal #2 Info : 30M x 0.32mm x 0.50µm

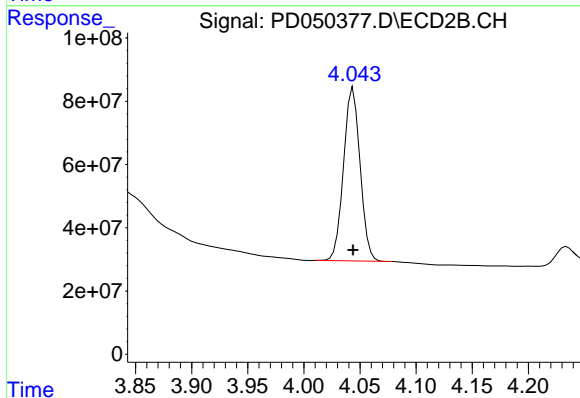




#1 Tetrachloro-m-xylene

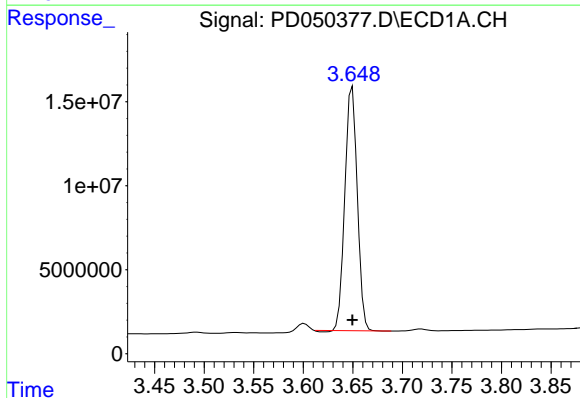
R.T.: 3.228 min
 Delta R.T.: 0.000 min
 Response: 29905989
 Conc: 20.55 ng/ml

Instrument :
 ECD_D
 ClientSampleId :



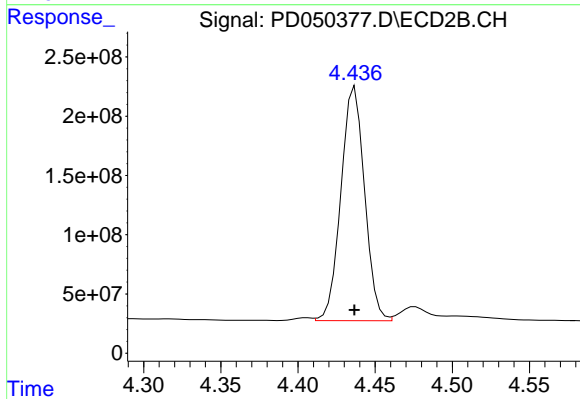
#1 Tetrachloro-m-xylene

R.T.: 4.044 min
 Delta R.T.: 0.000 min
 Response: 561572219
 Conc: 20.39 ng/ml



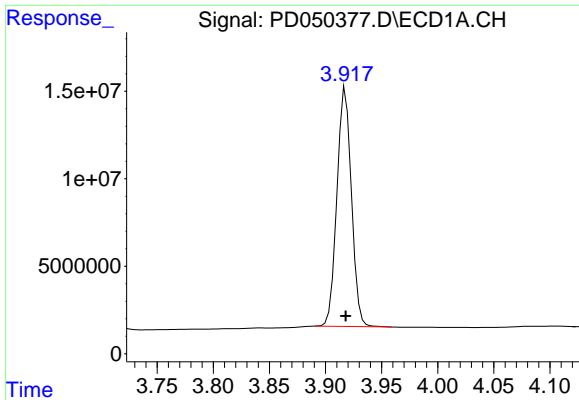
#2 alpha-BHC

R.T.: 3.650 min
 Delta R.T.: 0.000 min
 Response: 126406904
 Conc: 53.84 ng/ml



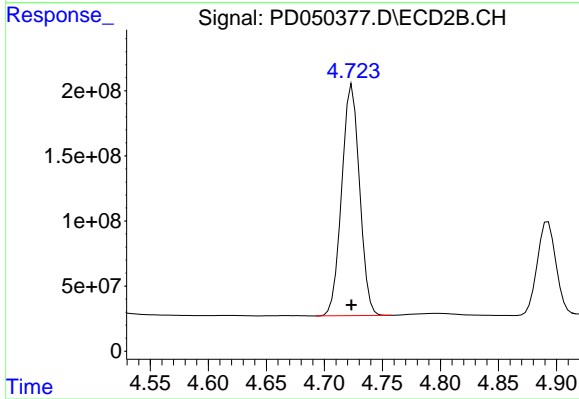
#2 alpha-BHC

R.T.: 4.437 min
 Delta R.T.: 0.000 min
 Response: 2105591131
 Conc: 49.61 ng/ml

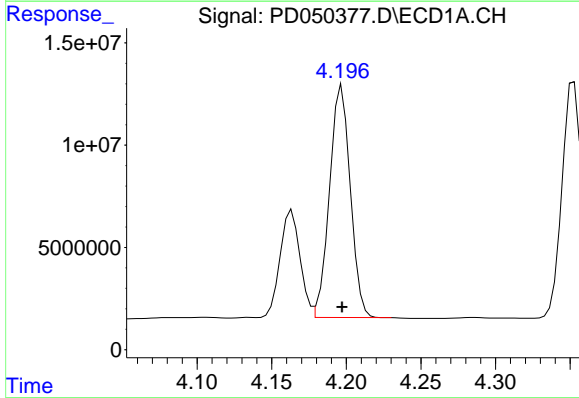


#3 gamma-BHC (Lindane)
 R.T.: 3.918 min
 Delta R.T.: 0.000 min
 Response: 122718883
 Conc: 52.60 ng/ml

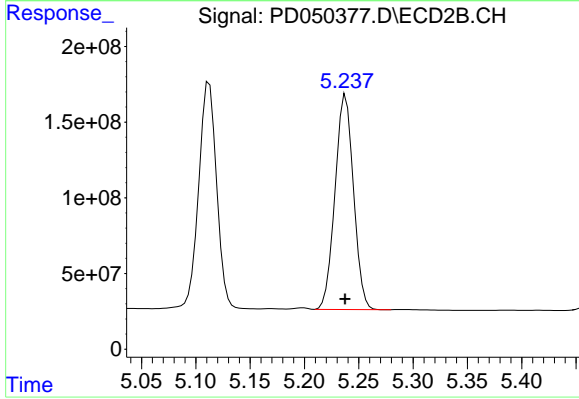
Instrument :
 ECD_D
 ClientSampleId :



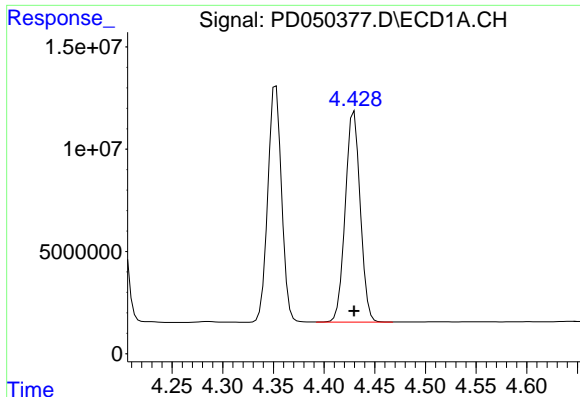
#3 gamma-BHC (Lindane)
 R.T.: 4.724 min
 Delta R.T.: 0.000 min
 Response: 1901271555
 Conc: 49.98 ng/ml



#4 Heptachlor
 R.T.: 4.197 min
 Delta R.T.: 0.000 min
 Response: 110048569
 Conc: 49.87 ng/ml

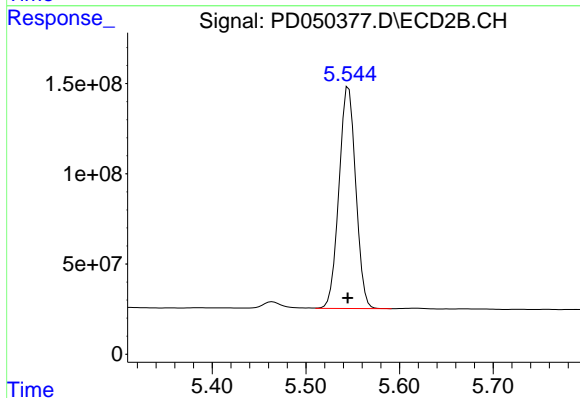


#4 Heptachlor
 R.T.: 5.238 min
 Delta R.T.: 0.000 min
 Response: 1680029799
 Conc: 44.33 ng/ml

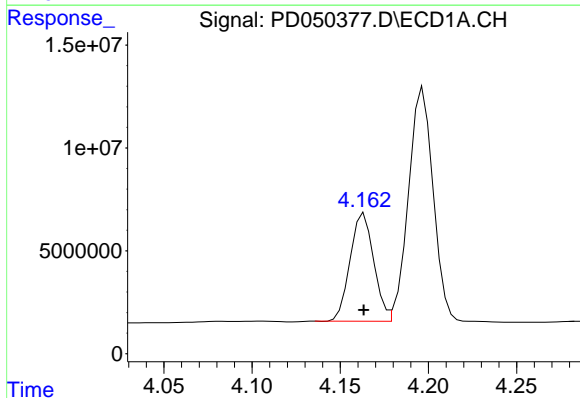


#5 Aldrin
 R.T.: 4.430 min
 Delta R.T.: 0.000 min
 Response: 105698736
 Conc: 46.12 ng/ml

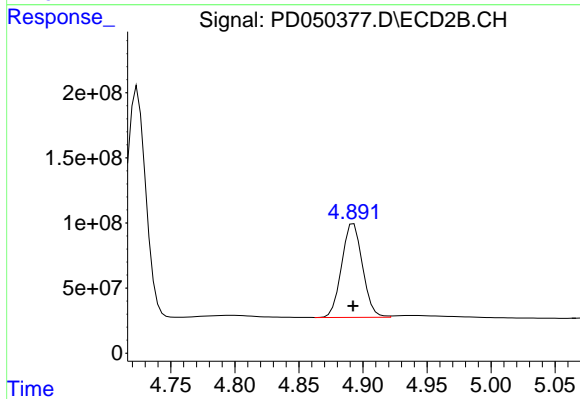
Instrument :
 ECD_D
 ClientSampled :



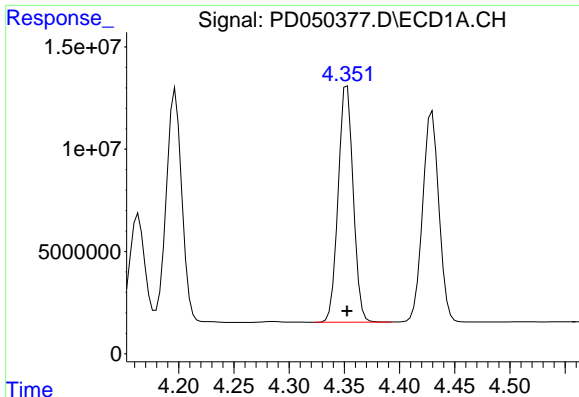
#5 Aldrin
 R.T.: 5.546 min
 Delta R.T.: 0.000 min
 Response: 1530528751
 Conc: 42.80 ng/ml



#6 beta-BHC
 R.T.: 4.164 min
 Delta R.T.: 0.000 min
 Response: 48974253
 Conc: 53.57 ng/ml



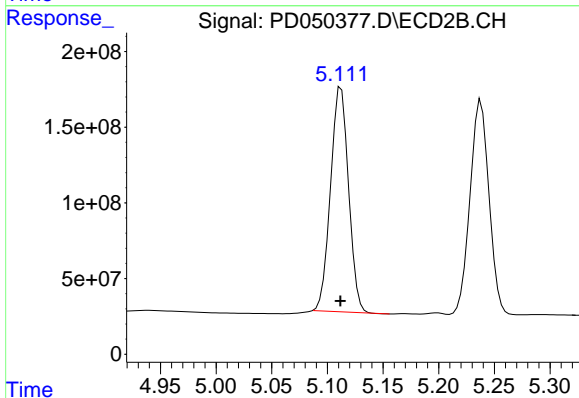
#6 beta-BHC
 R.T.: 4.893 min
 Delta R.T.: 0.000 min
 Response: 813668800
 Conc: 49.04 ng/ml



#7 delta-BHC

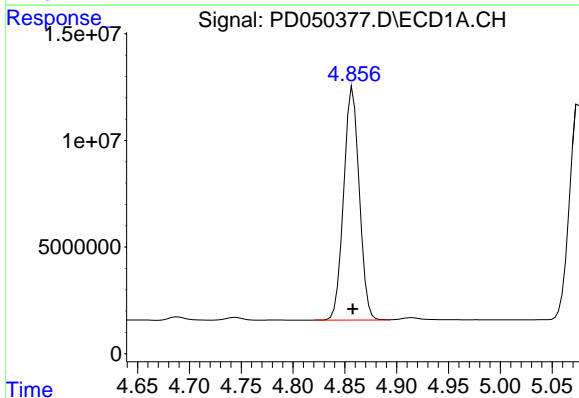
R.T.: 4.353 min
 Delta R.T.: 0.000 min
 Response: 109526469
 Conc: 50.24 ng/ml

Instrument :
 ECD_D
 ClientSampled :



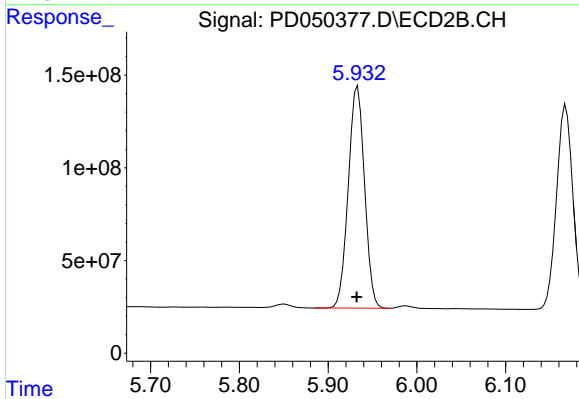
#7 delta-BHC

R.T.: 5.112 min
 Delta R.T.: 0.000 min
 Response: 1668738803
 Conc: 44.70 ng/ml



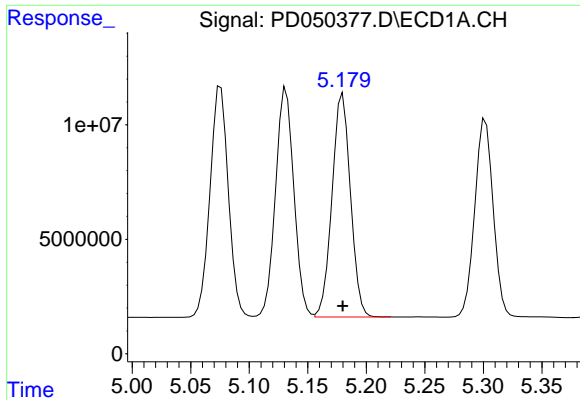
#8 Heptachlor epoxide

R.T.: 4.858 min
 Delta R.T.: 0.000 min
 Response: 114273039
 Conc: 53.78 ng/ml



#8 Heptachlor epoxide

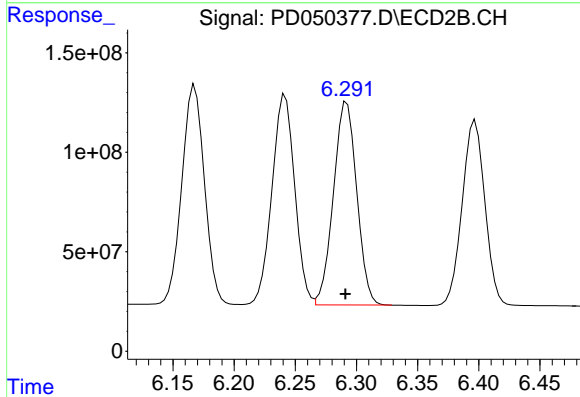
R.T.: 5.933 min
 Delta R.T.: 0.000 min
 Response: 1525125792
 Conc: 47.98 ng/ml



#9 Endosulfan I

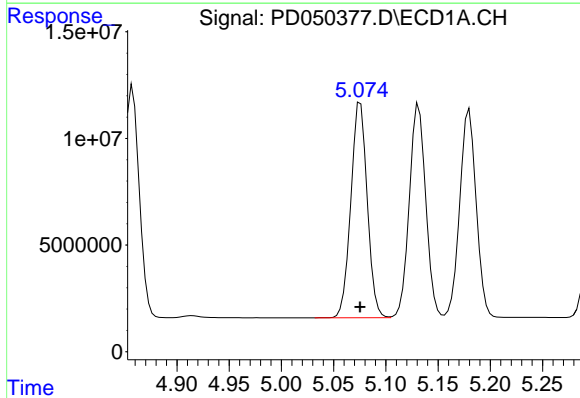
R.T.: 5.180 min
 Delta R.T.: 0.000 min
 Response: 107046893
 Conc: 53.13 ng/ml

Instrument :
 ECD_D
 ClientSampleId :



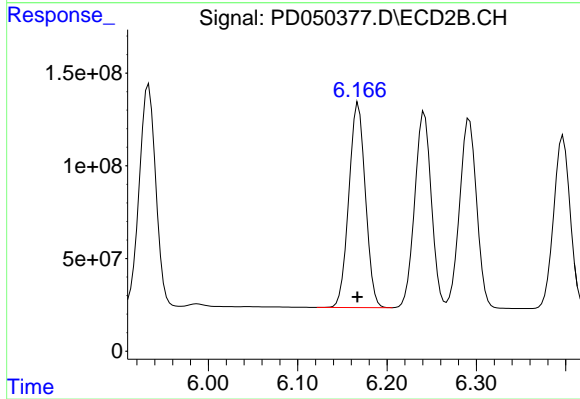
#9 Endosulfan I

R.T.: 6.292 min
 Delta R.T.: 0.001 min
 Response: 1352435871
 Conc: 47.65 ng/ml



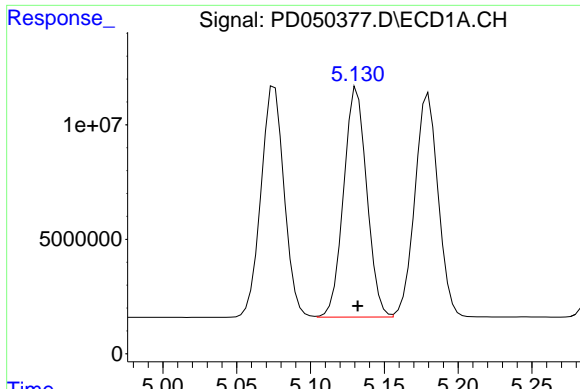
#10 gamma-Chlordane

R.T.: 5.076 min
 Delta R.T.: 0.000 min
 Response: 110202833
 Conc: 50.01 ng/ml



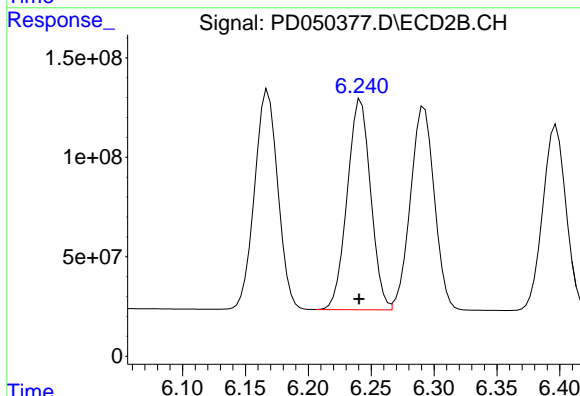
#10 gamma-Chlordane

R.T.: 6.168 min
 Delta R.T.: 0.000 min
 Response: 1422257136
 Conc: 44.88 ng/ml

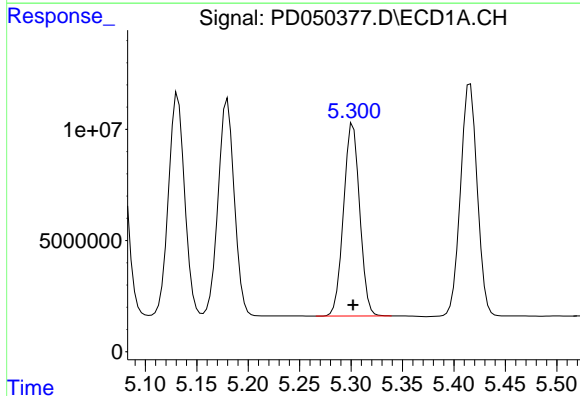


#11 alpha-Chlordane
 R.T.: 5.132 min
 Delta R.T.: 0.000 min
 Response: 109451688
 Conc: 50.23 ng/ml

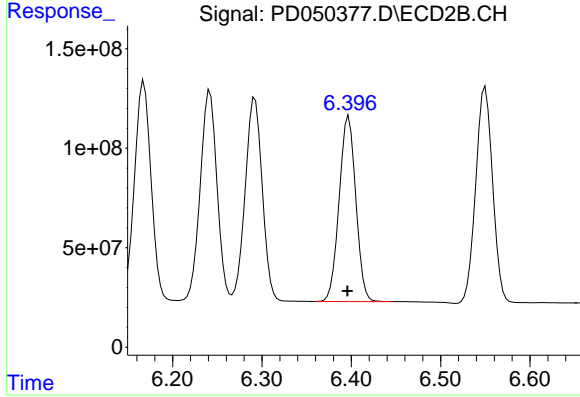
Instrument :
 ECD_D
 ClientSampled :



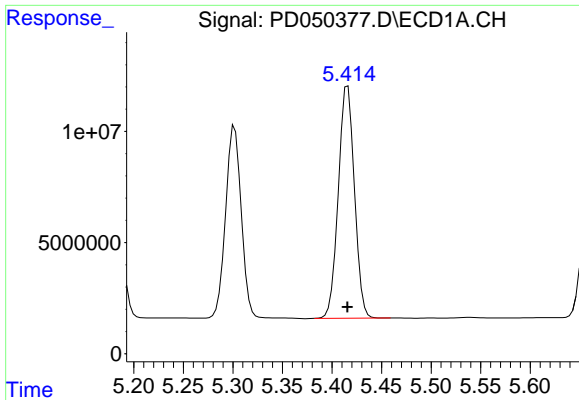
#11 alpha-Chlordane
 R.T.: 6.242 min
 Delta R.T.: 0.002 min
 Response: 1373734218
 Conc: 45.18 ng/ml



#12 4,4'-DDE
 R.T.: 5.302 min
 Delta R.T.: 0.000 min
 Response: 94763197
 Conc: 46.24 ng/ml



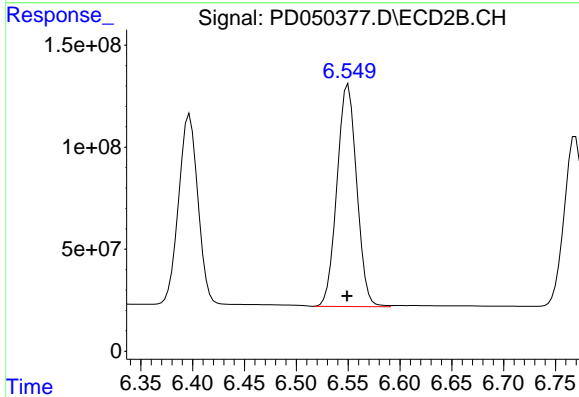
#12 4,4'-DDE
 R.T.: 6.397 min
 Delta R.T.: 0.002 min
 Response: 1203348429
 Conc: 40.92 ng/ml



#13 Dieldrin

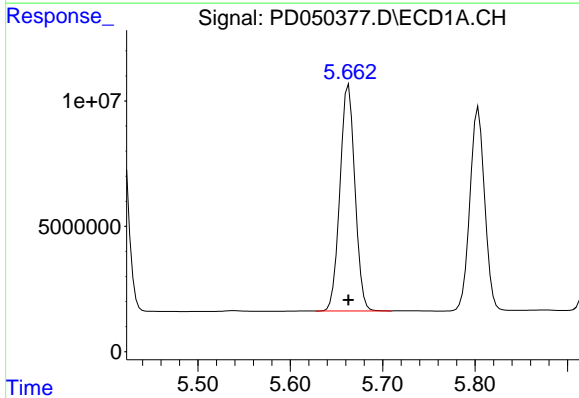
R.T.: 5.416 min
 Delta R.T.: 0.000 min
 Response: 118220045
 Conc: 53.53 ng/ml

Instrument :
 ECD_D
 ClientSampled :



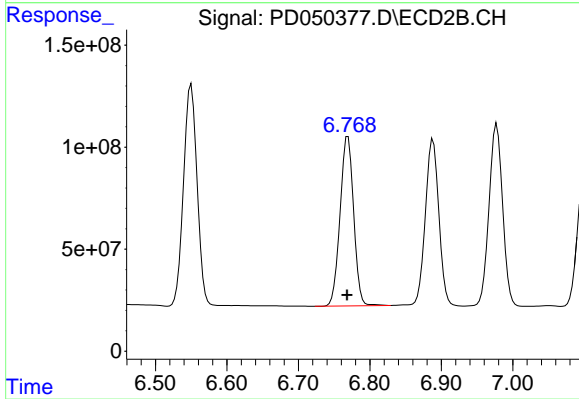
#13 Dieldrin

R.T.: 6.550 min
 Delta R.T.: 0.001 min
 Response: 1441311814
 Conc: 47.83 ng/ml



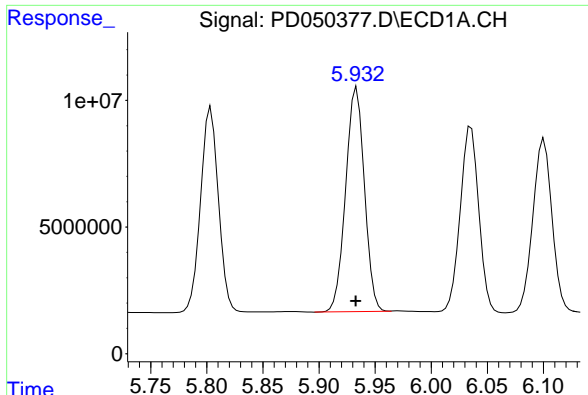
#14 Endrin

R.T.: 5.663 min
 Delta R.T.: 0.000 min
 Response: 101702438
 Conc: 52.93 ng/ml



#14 Endrin

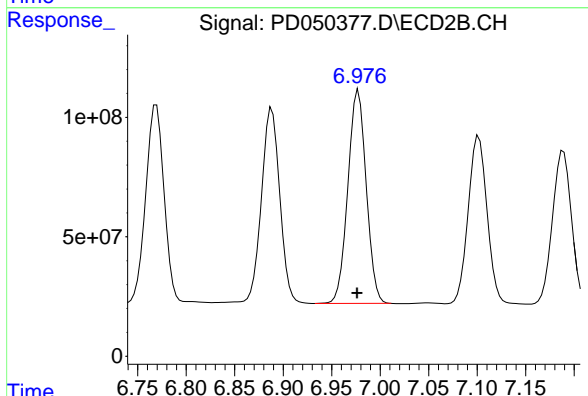
R.T.: 6.769 min
 Delta R.T.: 0.001 min
 Response: 1095080958
 Conc: 45.43 ng/ml



#15 Endosulfan II

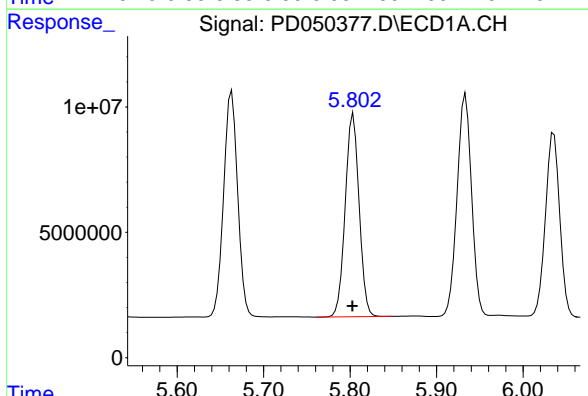
R.T.: 5.934 min
 Delta R.T.: 0.000 min
 Response: 102917475
 Conc: 53.99 ng/ml

Instrument :
 ECD_D
 ClientSampleId :



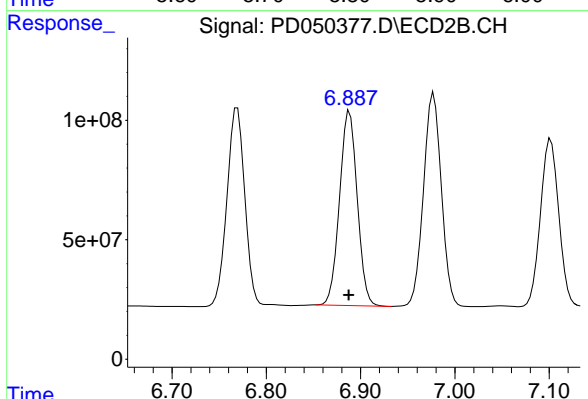
#15 Endosulfan II

R.T.: 6.978 min
 Delta R.T.: 0.001 min
 Response: 1174292952
 Conc: 48.11 ng/ml



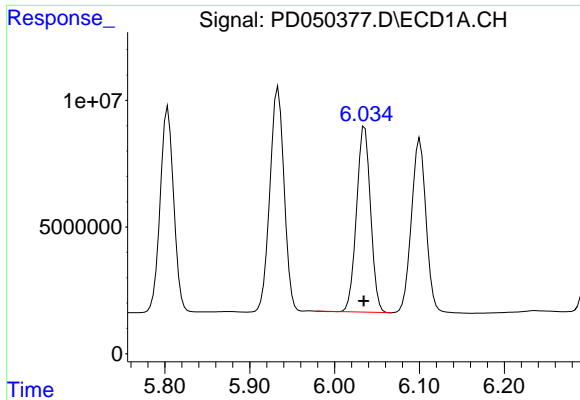
#16 4,4'-DDD

R.T.: 5.804 min
 Delta R.T.: 0.000 min
 Response: 89743960
 Conc: 52.36 ng/ml



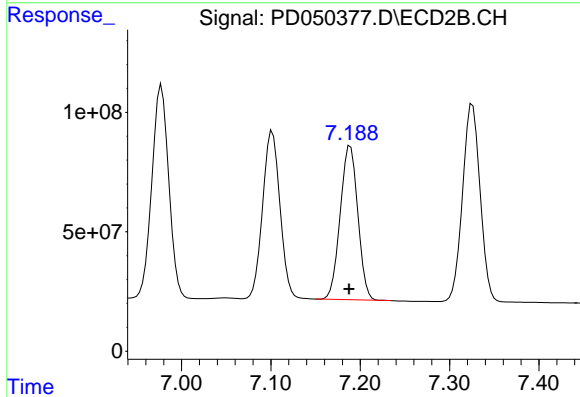
#16 4,4'-DDD

R.T.: 6.888 min
 Delta R.T.: 0.001 min
 Response: 1063483461
 Conc: 46.57 ng/ml

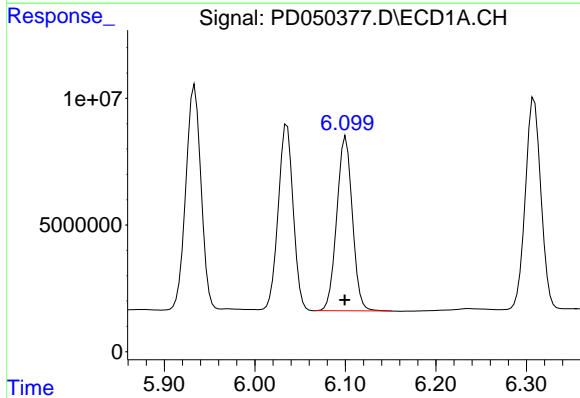


#17 4,4'-DDT
 R.T.: 6.036 min
 Delta R.T.: 0.001 min
 Response: 84169542
 Conc: 47.50 ng/ml

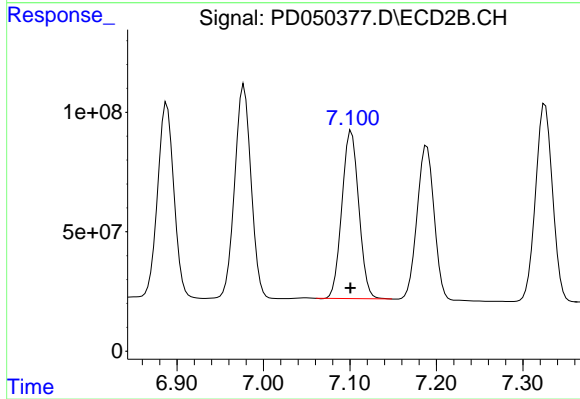
Instrument :
 ECD_D
 ClientSampled :



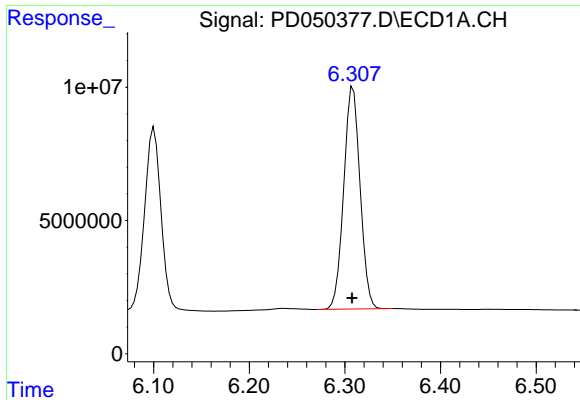
#17 4,4'-DDT
 R.T.: 7.189 min
 Delta R.T.: 0.001 min
 Response: 881839094
 Conc: 42.73 ng/ml



#18 Endrin aldehyde
 R.T.: 6.101 min
 Delta R.T.: 0.001 min
 Response: 82256237
 Conc: 54.26 ng/ml



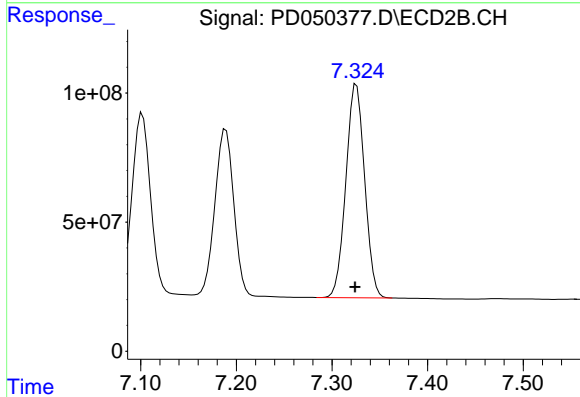
#18 Endrin aldehyde
 R.T.: 7.102 min
 Delta R.T.: 0.001 min
 Response: 948182888
 Conc: 46.89 ng/ml



#19 Endosulfan Sulfate

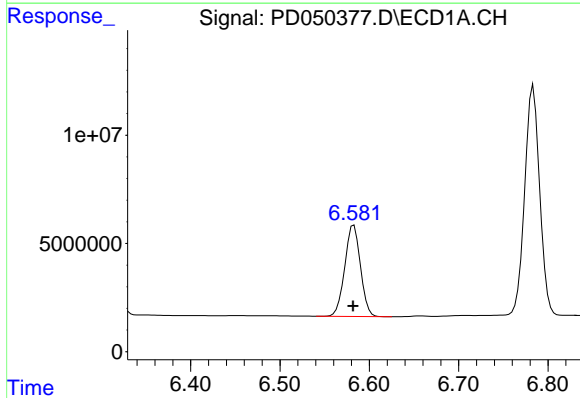
R.T.: 6.309 min
 Delta R.T.: 0.001 min
 Response: 99563711
 Conc: 53.68 ng/ml

Instrument :
 ECD_D
 ClientSampled :



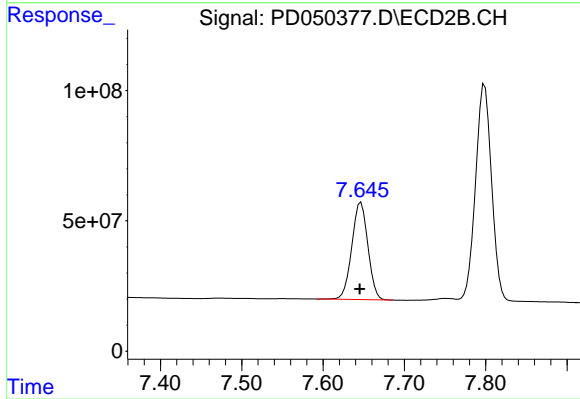
#19 Endosulfan Sulfate

R.T.: 7.326 min
 Delta R.T.: 0.001 min
 Response: 1131839917
 Conc: 46.46 ng/ml



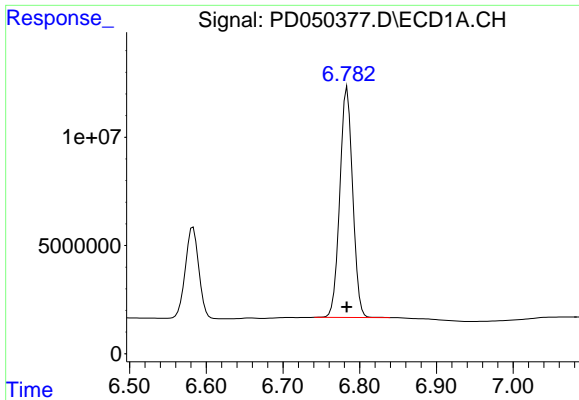
#20 Methoxychlor

R.T.: 6.583 min
 Delta R.T.: 0.001 min
 Response: 51396753
 Conc: 53.85 ng/ml



#20 Methoxychlor

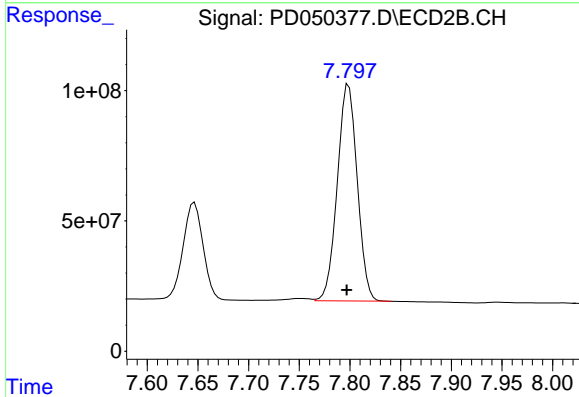
R.T.: 7.647 min
 Delta R.T.: 0.002 min
 Response: 511450496
 Conc: 46.00 ng/ml



#21 Endrin ketone

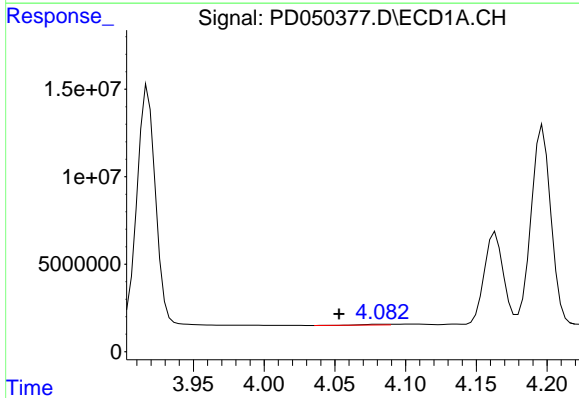
R.T.: 6.784 min
 Delta R.T.: 0.000 min
 Response: 123840470
 Conc: 57.29 ng/ml

Instrument :
 ECD_D
 ClientSampleId :



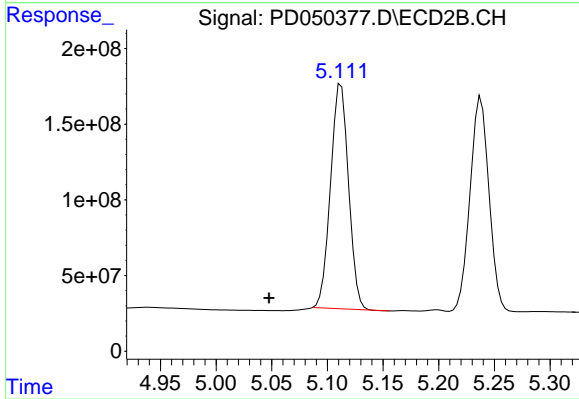
#21 Endrin ketone

R.T.: 7.799 min
 Delta R.T.: 0.002 min
 Response: 1137504794
 Conc: 49.08 ng/ml



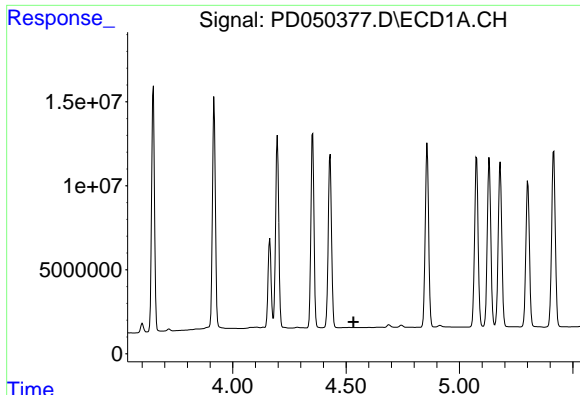
#23 Chlordane-1

R.T.: 4.083 min
 Delta R.T.: 0.030 min
 Response: 511990
 Conc: 7.60 ng/ml



#23 Chlordane-1

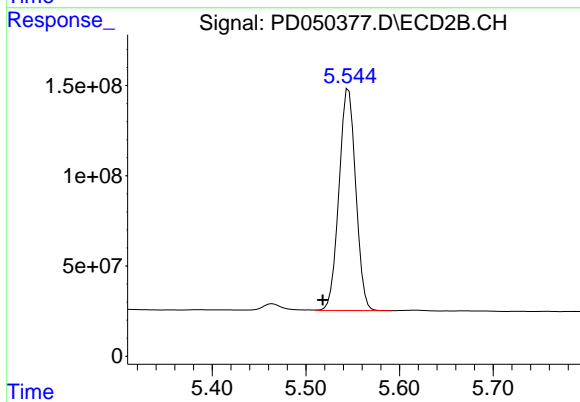
R.T.: 5.112 min
 Delta R.T.: 0.065 min
 Response: 1668738803
 Conc: 1205.55 ng/ml



#24 Chlordane-2

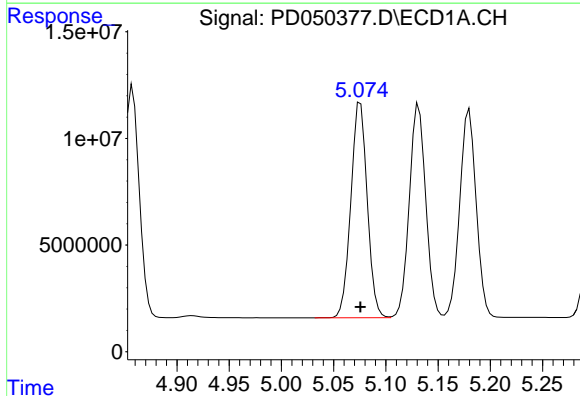
R.T.: 0.000 min
 Exp R.T.: 4.533 min
 Response: 0
 Conc: N.D.

Instrument :
 ECD_D
 ClientSampled :



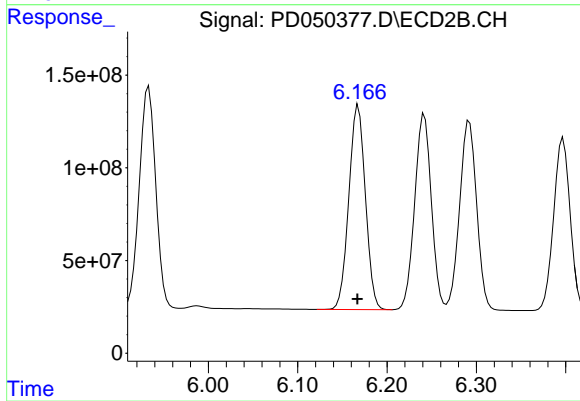
#24 Chlordane-2

R.T.: 5.546 min
 Delta R.T.: 0.028 min
 Response: 1530528751
 Conc: 1226.94 ng/ml



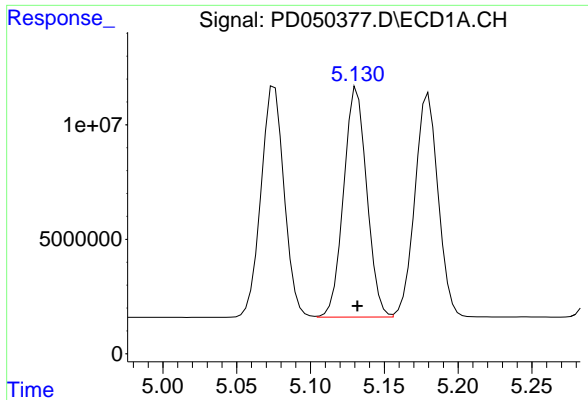
#25 Chlordane-3

R.T.: 5.076 min
 Delta R.T.: 0.000 min
 Response: 110202833
 Conc: 474.30 ng/ml



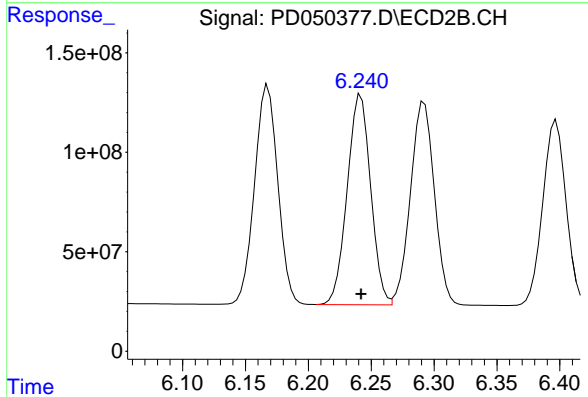
#25 Chlordane-3

R.T.: 6.168 min
 Delta R.T.: 0.000 min
 Response: 1422257136
 Conc: 353.06 ng/ml

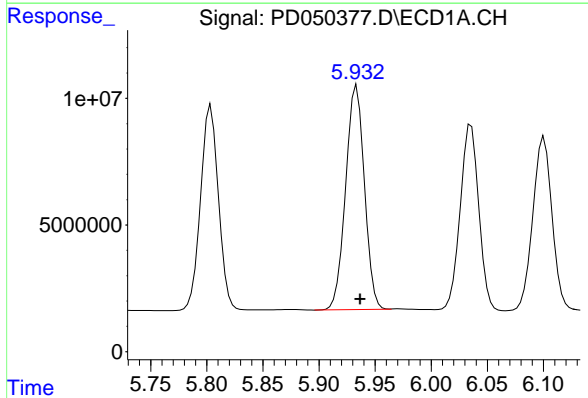


#26 Chlordane-4
 R.T.: 5.132 min
 Delta R.T.: 0.000 min
 Response: 109451688
 Conc: 491.62 ng/ml

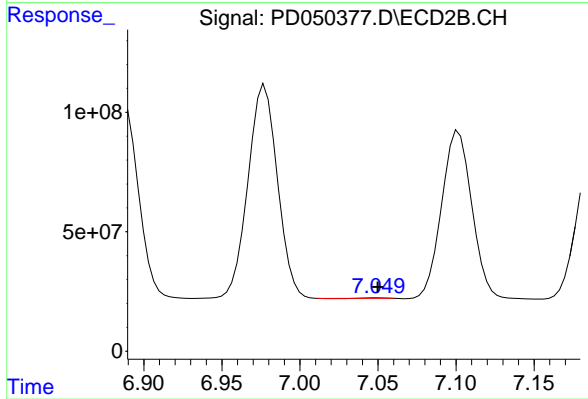
Instrument :
 ECD_D
 ClientSampled :



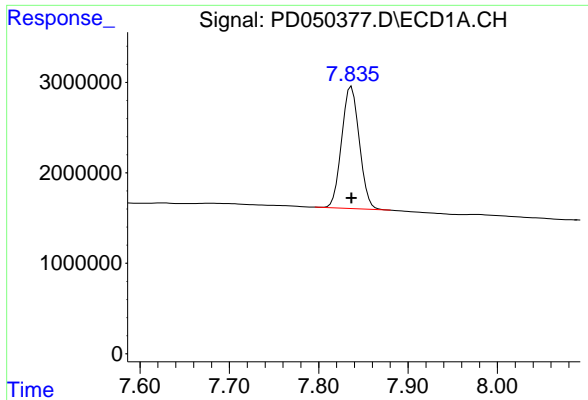
#26 Chlordane-4
 R.T.: 6.242 min
 Delta R.T.: 0.000 min
 Response: 1373734218
 Conc: 300.09 ng/ml



#27 Chlordane-5
 R.T.: 5.934 min
 Delta R.T.: -0.003 min
 Response: 102917475
 Conc: 1354.25 ng/ml



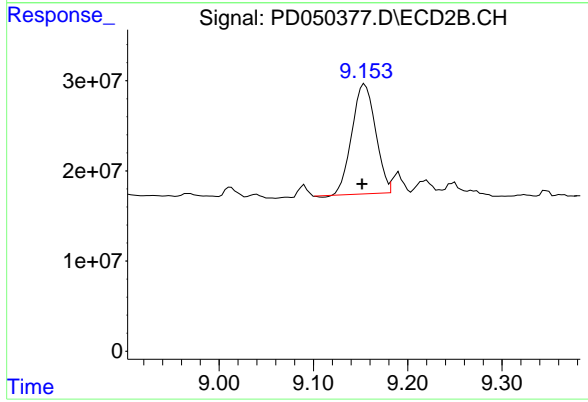
#27 Chlordane-5
 R.T.: 7.050 min
 Delta R.T.: 0.000 min
 Response: 907700
 Conc: 0.99 ng/ml



#28 Decachlorobiphenyl

R.T.: 7.837 min
Delta R.T.: 0.000 min
Response: 18532958
Conc: 12.52 ng/ml

Instrument :
ECD_D
ClientSampleId :



#28 Decachlorobiphenyl

R.T.: 9.154 min
Delta R.T.: 0.003 min
Response: 211615008
Conc: 10.45 ng/ml