

Data Path : Z:\pestpcbsrv\HPCHEM1\ECD\_D\Data\PD111721\  
 Data File : PD066987.D  
 Signal(s) : Signal #1: ECD1A.ch Signal #2: ECD2B.ch  
 Acq On : 17 Nov 2021 12:32  
 Operator : AR\AJ  
 Sample : M4677-02  
 Misc :  
 ALS Vial : 11 Sample Multiplier: 1

Instrument :  
 ECD\_D  
 ClientSampleId :

Integration File signal 1: autoint1.e  
 Integration File signal 2: autoint2.e  
 Quant Time: Nov 18 01:18:29 2021  
 Quant Method : Z:\pestpcbsrv\HPCHEM1\ECD\_D\Method\PD102721CLP.M  
 Quant Title : GC Extractables  
 QLast Update : Wed Oct 27 16:50:52 2021  
 Response via : Initial Calibration  
 Integrator: ChemStation

Volume Inj. : 1 µl  
 Signal #1 Phase : ZB-MR2 Signal #2 Phase: ZB-MR1  
 Signal #1 Info : 30M x 0.32mm x0.2 Signal #2 Info : 30M x 0.32mm x 0.50µm

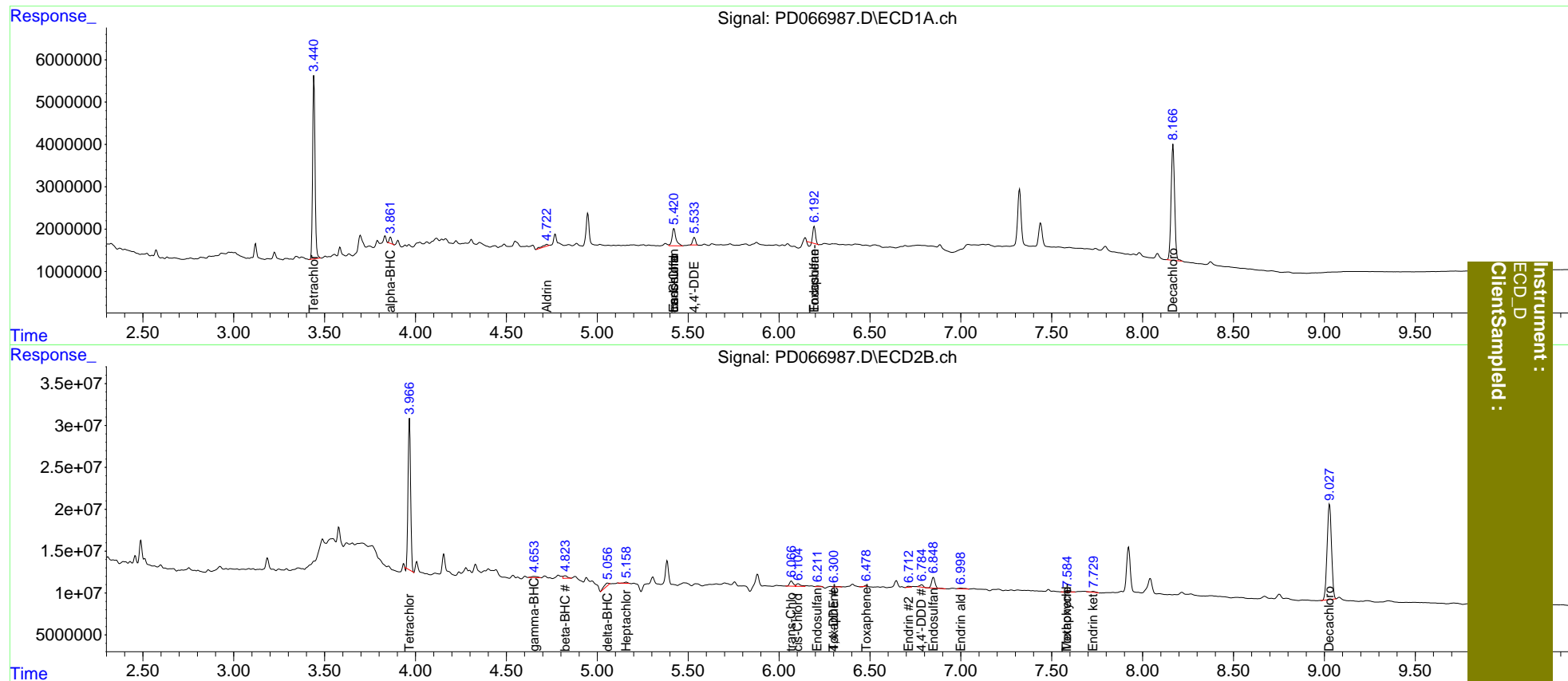
	Compound	RT#1	RT#2	Resp#1	Resp#2	ng/ml	ng/ml
-----							
System Monitoring Compounds							
1)	SA Tetrachlo...	3.441	3.967	39807261	176.6E6	20.593	20.392
2)	SA Decachlor...	8.167	9.028	36676154	191.2E6	31.302	36.665
Target Compounds							
2)	A alpha-BHC	3.863	4.380	1398786	-3567979	0.478	N.D. #
3)	MA gamma-BHC...	0.000	4.653	0	3264432	N.D.	0.323
4)	MA Heptachlor	0.000	5.160	0	1657860	N.D.	0.169
5)	MB Aldrin	4.723f	5.477f	1123162	-843009	0.390	N.D. #
6)	B beta-BHC	0.000	4.824	0	4692784	N.D.	0.952
7)	B delta-BHC	0.000	5.057	0	5680271	N.D.	0.574
9)	A Endosulfan I	5.422f	6.213	6091501	1373199	2.657	0.175 #
10)	B trans-Chl...	5.422f	6.068	6091501	8459598	2.357	0.982 #
11)	B cis-Chlor...	5.422	6.105f	6091501	5298506	2.391	0.617 #
12)	B 4,4'-DDE	5.534f	6.302	2001979	1523913	0.877	0.200 #
13)	MA Dieldrin	0.000	6.479	0	427444	N.D.	<MDL
14)	MA Endrin	0.000	6.713f	0	1672218	N.D.	0.246
15)	B Endosulfa...	6.194f	6.849f	3415478	17786810	1.645	2.480 #
16)	A 4,4'-DDD	0.000	6.785	0	3937652	N.D.	0.610
18)	B Endrin al...	0.000	6.999	0	1936211	N.D.	0.364
20)	A Methoxychlor	0.000	7.586	0	901767	N.D.	0.279
21)	B Endrin ke...	0.000	7.729	0	1639458	N.D.	0.209
22)	Toxaphene-1	0.000	6.302	0	1523913	N.D.	37.700
23)	Toxaphene-2	6.194	6.479	3415478	427444	212.432	6.472 #

(f)=RT Delta > 1/2 Window (#)=Amounts differ by > 25% (m)=manual int.

Data Path : Z:\pestpcbsrv\HPCHEM1\ECD\_D\Data\PD111721\  
 Data File : PD066987.D  
 Signal(s) : Signal #1: ECD1A.ch Signal #2: ECD2B.ch  
 Acq On : 17 Nov 2021 12:32  
 Operator : AR\AJ  
 Sample : M4677-02  
 Misc :  
 ALS Vial : 11 Sample Multiplier: 1

Integration File signal 1: autoint1.e  
 Integration File signal 2: autoint2.e  
 Quant Time: Nov 18 01:18:29 2021  
 Quant Method : Z:\pestpcbsrv\HPCHEM1\ECD\_D\Method\PD102721CLP.M  
 Quant Title : GC Extractables  
 QLast Update : Wed Oct 27 16:50:52 2021  
 Response via : Initial Calibration  
 Integrator: ChemStation

Volume Inj. : 1 µl  
 Signal #1 Phase : ZB-MR2 Signal #2 Phase: ZB-MR1  
 Signal #1 Info : 30M x 0.32mm x0.2 Signal #2 Info : 30M x 0.32mm x 0.50µm



Instrument : ECD\_D  
 ClientSampled :