

Data Path : Z:\pestpcbsrv\HPCHEM1\ECD_D\Data\PD111723\
 Data File : PD079692.D
 Signal(s) : Signal #1: ECD1A.ch Signal #2: ECD2B.ch
 Acq On : 18 Nov 2023 04:51
 Operator : AR\AJ
 Sample : 05364-10
 Misc :
 ALS Vial : 37 Sample Multiplier: 1

Instrument :
 ECD_D
 ClientSampleId :

Integration File signal 1: autoint1.e
 Integration File signal 2: autoint2.e
 Quant Time: Nov 19 21:50:42 2023
 Quant Method : Z:\pestpcbsrv\HPCHEM1\ECD_D\Method\PD110623CLP.M
 Quant Title : GC Extractables
 QLast Update : Sat Nov 04 07:14:58 2023
 Response via : Initial Calibration
 Integrator: ChemStation

Volume Inj. : 1 µl
 Signal #1 Phase : ZB-MR1 Signal #2 Phase: ZB-MR2
 Signal #1 Info : 30M x 0.32mm x0.5 Signal #2 Info : 30M x 0.32mm x 0.25µm

	Compound	RT#1	RT#2	Resp#1	Resp#2	ng/ml	ng/ml

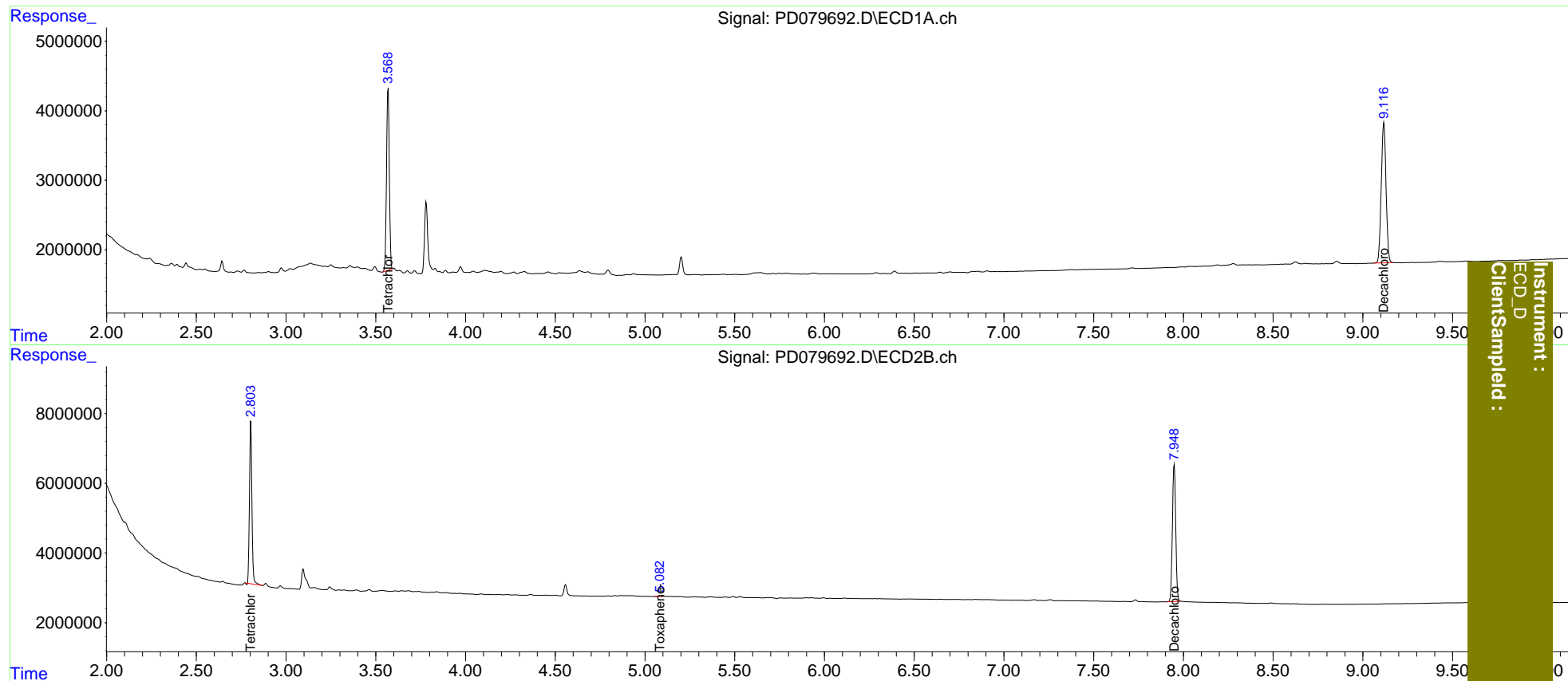
System Monitoring Compounds							
1)	SA Tetrachlo...	3.569	2.804	28283667	44310168	19.367	19.372
27)	SA Decachlor...	9.117	7.949	37281492	50638448	21.009	21.210
Target Compounds							
3)	MA gamma-BHC...	0.000	3.644	0	193908	N.D.	<MDL
6)	B beta-BHC	0.000	3.891f	0	56191	N.D.	<MDL
9)	A Endosulfan I	0.000	5.083f	0	157940	N.D.	<MDL
11)	B cis-Chlor...	0.000	5.083	0	157940	N.D.	<MDL
14)	MA Endrin	0.000	5.688	0	106664	N.D.	<MDL
15)	B Endosulfa...	0.000	5.995	0	132220	N.D.	<MDL
22)	Toxaphene-1	0.000	5.083f	0	157940	N.D.	9.446

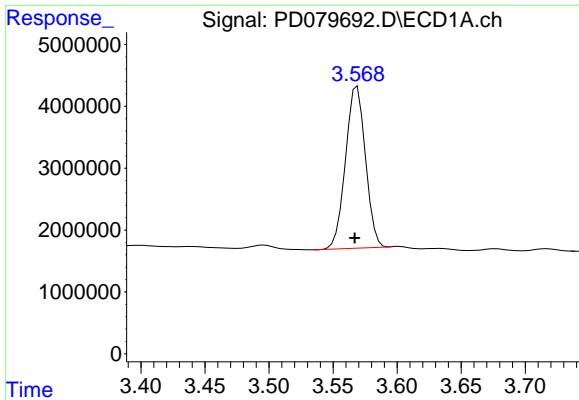
(f)=RT Delta > 1/2 Window (#)=Amounts differ by > 25% (m)=manual int.

Data Path : Z:\pestpcbsrv\HPCHEM1\ECD_D\Data\PD111723\
 Data File : PD079692.D
 Signal(s) : Signal #1: ECD1A.ch Signal #2: ECD2B.ch
 Acq On : 18 Nov 2023 04:51
 Operator : AR\AJ
 Sample : 05364-10
 Misc :
 ALS Vial : 37 Sample Multiplier: 1

Integration File signal 1: autoint1.e
 Integration File signal 2: autoint2.e
 Quant Time: Nov 19 21:50:42 2023
 Quant Method : Z:\pestpcbsrv\HPCHEM1\ECD_D\Method\PD110623CLP.M
 Quant Title : GC Extractables
 QLast Update : Sat Nov 04 07:14:58 2023
 Response via : Initial Calibration
 Integrator: ChemStation

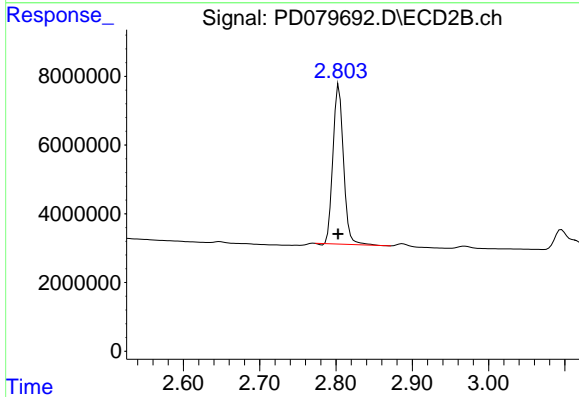
Volume Inj. : 1 µl
 Signal #1 Phase : ZB-MR1 Signal #2 Phase: ZB-MR2
 Signal #1 Info : 30M x 0.32mm x0.5 Signal #2 Info : 30M x 0.32mm x 0.25µm



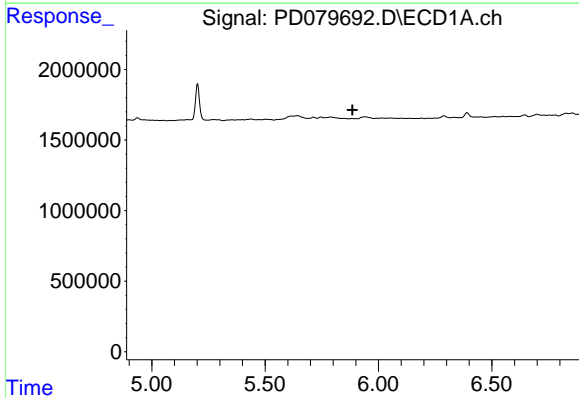


#1 Tetrachloro-m-xylene
 R.T.: 3.569 min
 Delta R.T.: 0.002 min
 Response: 28283667
 Conc: 19.37 ng/ml

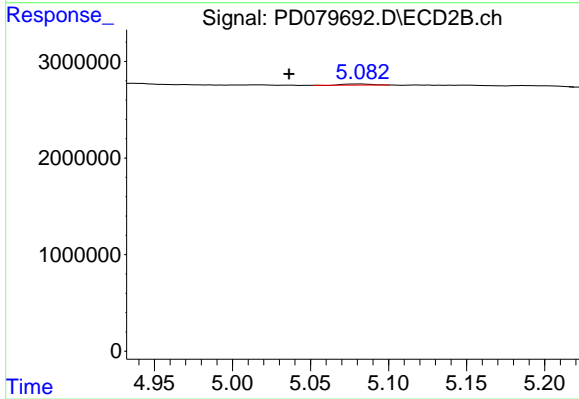
Instrument :
 ECD_D
 ClientSampleId :



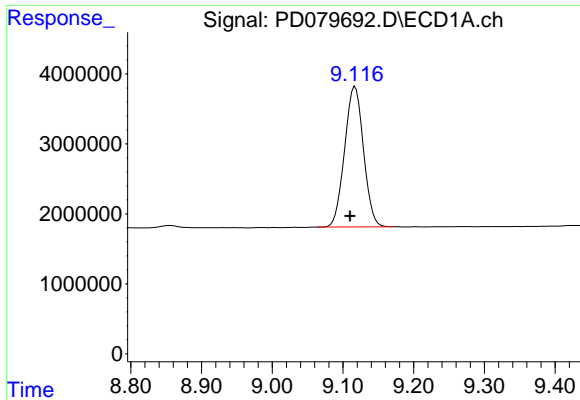
#1 Tetrachloro-m-xylene
 R.T.: 2.804 min
 Delta R.T.: 0.001 min
 Response: 44310168
 Conc: 19.37 ng/ml



#22 Toxaphene-1
 R.T.: 0.000 min
 Exp R.T. : 5.886 min
 Response: 0
 Conc: N.D.



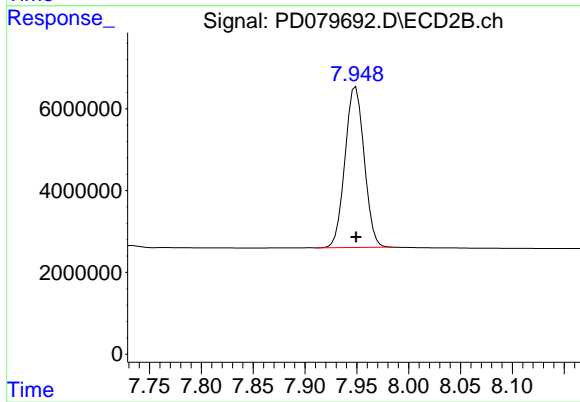
#22 Toxaphene-1
 R.T.: 5.083 min
 Delta R.T.: 0.046 min
 Response: 157940
 Conc: 9.45 ng/ml



#27 Decachlorobiphenyl

R.T.: 9.117 min
Delta R.T.: 0.007 min
Response: 37281492
Conc: 21.01 ng/ml

Instrument :
ECD_D
ClientSampleId :



#27 Decachlorobiphenyl

R.T.: 7.949 min
Delta R.T.: 0.000 min
Response: 50638448
Conc: 21.21 ng/ml