

Data Path : Z:\pestpcbsrv\HPCHEM1\ECD_D\Data\PD111724\
 Data File : PD086759.D
 Signal(s) : Signal #1: ECD1A.ch Signal #2: ECD2B.ch
 Acq On : 15 Nov 2024 08:43
 Operator : AR\AJ
 Sample : HEXANE
 Misc :
 ALS Vial : 1 Sample Multiplier: 1

Instrument :
 ECD_D
 ClientSampleId :
 HEXANE

Integration File signal 1: autoint1.e
 Integration File signal 2: autoint2.e
 Quant Time: Nov 16 00:07:58 2024
 Quant Method : Z:\pestpcbsrv\HPCHEM1\ECD_D\Method\PD103024.M
 Quant Title : GC Extractables
 QLast Update : Thu Oct 31 11:38:14 2024
 Response via : Initial Calibration
 Integrator: ChemStation

Volume Inj. : 1 µl
 Signal #1 Phase : ZB-MR2 Signal #2 Phase: ZB-MR2
 Signal #1 Info : 30M x 0.32mm x0.5 Signal #2 Info : 30M x 0.32mm x 0.25µm

	Compound	RT#1	RT#2	Resp#1	Resp#2	ng/ml	ng/ml

System Monitoring Compounds							
1)	SA Tetrachlo...	3.591f	2.890	136223	268892	0.093	0.027 #
28)	SA Decachlor...	0.000	8.089	0	446691	N.D.	0.042 #
Target Compounds							
2)	A alpha-BHC	0.000	3.390	0	67689	N.D.	0.004 #
4)	MA Heptachlor	0.000	4.089	0	158635	N.D.	0.011 #
5)	MB Aldrin	5.269f	4.390	43494	450924	0.016	0.031 #
6)	B beta-BHC	0.000	4.055f	0	333998	N.D.	0.052 #
7)	B delta-BHC	4.792f	4.267	135688	439782	0.046	0.030 #
8)	B Heptachlo...	0.000	4.869f	0	444755	N.D.	0.034 #
9)	A Endosulfan I	6.061f	5.253	128165	514050	0.056	0.041 #
10)	B gamma-Chl...	0.000	5.161f	0	829161	N.D.	0.061 #
11)	B alpha-Chl...	6.035	5.221	388889	867204	0.161	0.065 #
12)	B 4,4'-DDE	0.000	5.401	0	517384	N.D.	0.040 #
13)	MA Dieldrin	0.000	5.539	0	45288	N.D.	0.003 #
14)	MA Endrin	0.000	5.809	0	2114874	N.D.	0.172 #
15)	B Endosulfa...	0.000	6.125f	0	1911571	N.D.	0.159 #
16)	A 4,4'-DDD	0.000	5.957	0	649748	N.D.	0.059 #
17)	MA 4,4'-DDT	0.000	6.206	0	2434418	N.D.	0.210 #
18)	B Endrin al...	0.000	6.270	0	927424	N.D.	0.099 #
19)	B Endosulfa...	0.000	6.503	0	2480800	N.D.	0.214 #
20)	A Methoxychlor	0.000	6.768	0	582072	N.D.	0.092 #
21)	B Endrin ke...	7.644	7.018	1068690	63526	0.471	0.005 #
22)	Mirex	0.000	7.197	0	5363933	N.D.	0.516 #
23)	Chlordane-1	0.000	3.928	0	233919	N.D.	0.503 #
24)	Chlordane-2	5.269	4.494	43494	534444	0.445	1.079 #
25)	Chlordane-3	0.000	5.161	0	829161	N.D.	0.557 #
26)	Chlordane-4	6.061	5.221	128165	867204	0.279	0.690 #
27)	Chlordane-5	0.000	5.878	0	1587044	N.D.	3.887 #

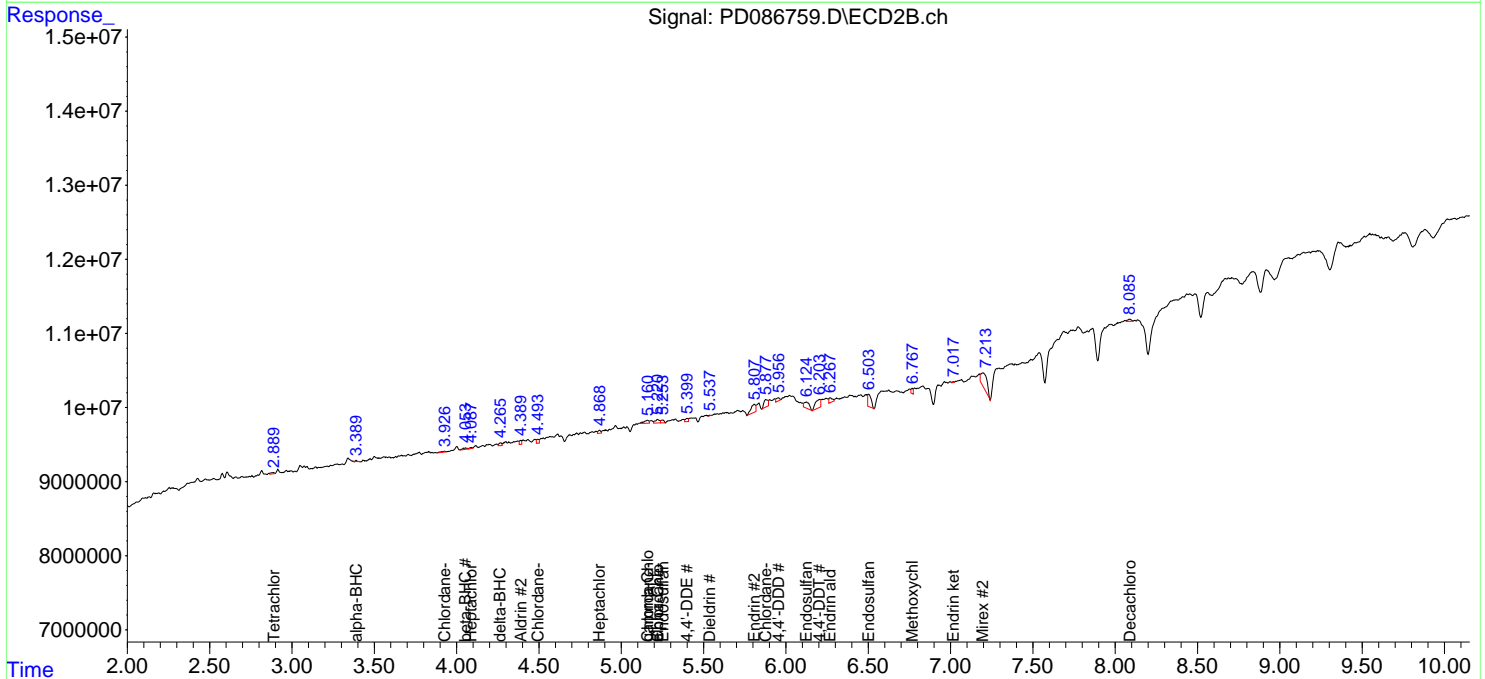
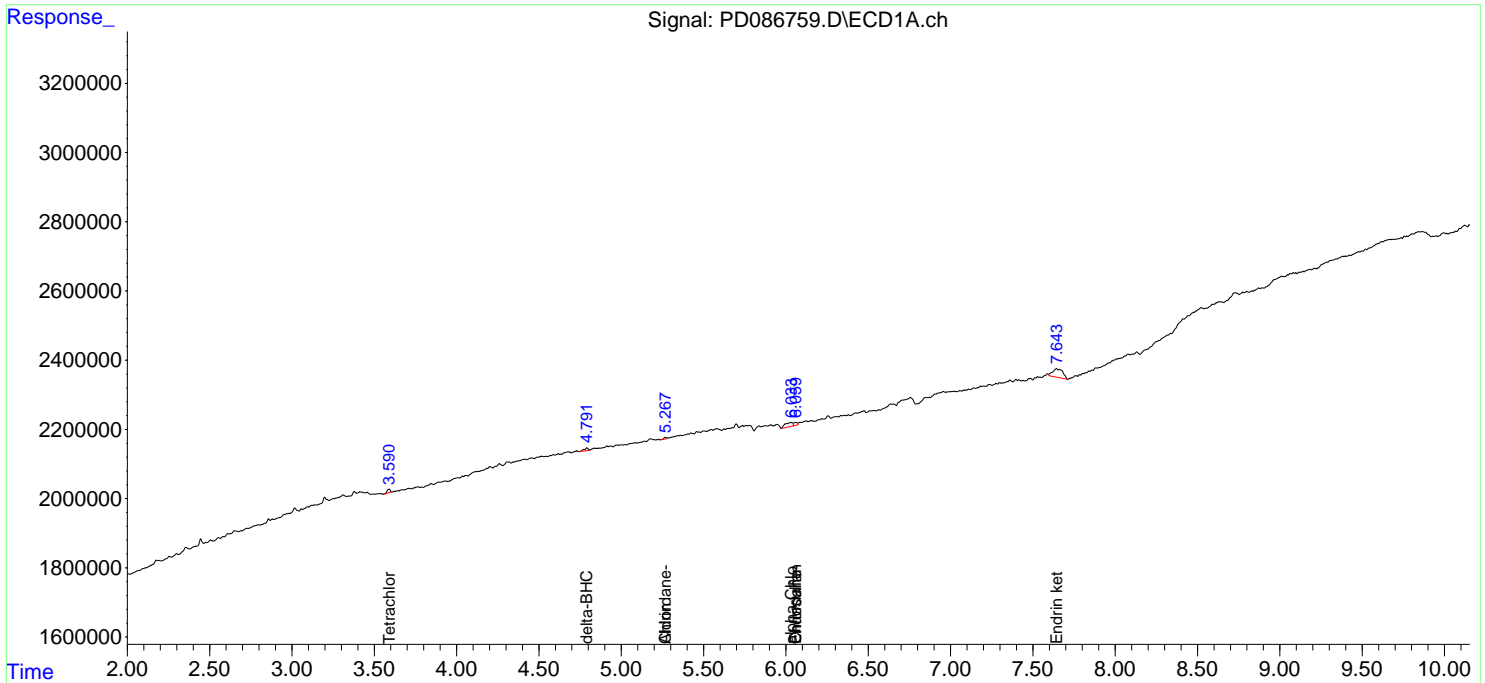
(f)=RT Delta > 1/2 Window (#)=Amounts differ by > 25% (m)=manual int.

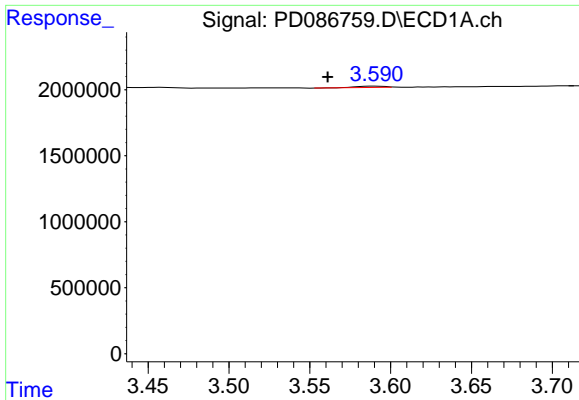
Data Path : Z:\pestpcbsrv\HPCHEM1\ECD_D\Data\PD111724\
 Data File : PD086759.D
 Signal(s) : Signal #1: ECD1A.ch Signal #2: ECD2B.ch
 Acq On : 15 Nov 2024 08:43
 Operator : AR\AJ
 Sample : HEXANE
 Misc :
 ALS Vial : 1 Sample Multiplier: 1

Instrument :
 ECD_D
ClientSampleId :
 HEXANE

Integration File signal 1: autoint1.e
 Integration File signal 2: autoint2.e
 Quant Time: Nov 16 00:07:58 2024
 Quant Method : Z:\pestpcbsrv\HPCHEM1\ECD_D\Method\PD103024.M
 Quant Title : GC Extractables
 QLast Update : Thu Oct 31 11:38:14 2024
 Response via : Initial Calibration
 Integrator: ChemStation

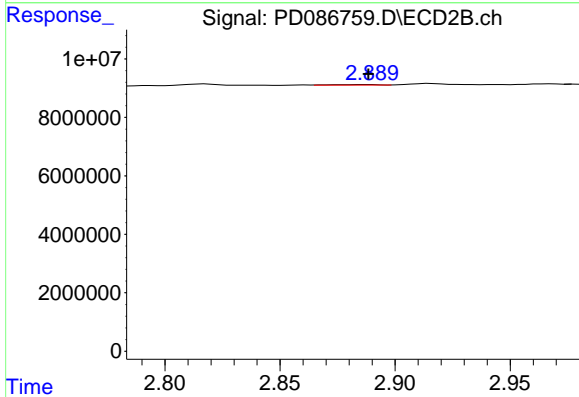
Volume Inj. : 1 µl
 Signal #1 Phase : ZB-MR1 Signal #2 Phase: ZB-MR2
 Signal #1 Info : 30M x 0.32mm x0.5 Signal #2 Info : 30M x 0.32mm x 0.25µm



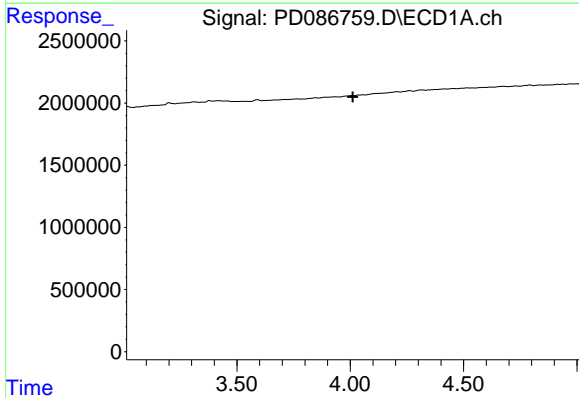


#1 Tetrachloro-m-xylene
 R.T.: 3.591 min
 Delta R.T.: 0.030 min
 Response: 136223
 Conc: 0.09 ng/ml

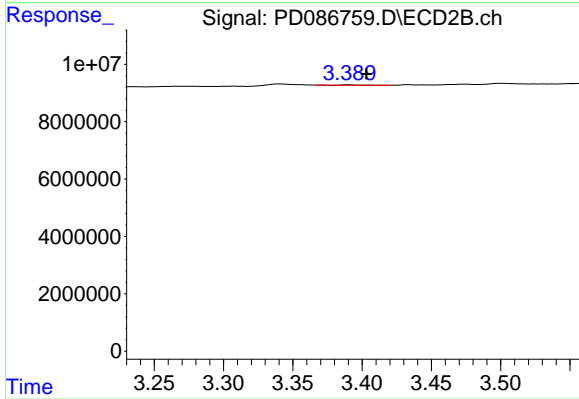
Instrument :
 ECD_D
 ClientSampleId :
 HEXANE



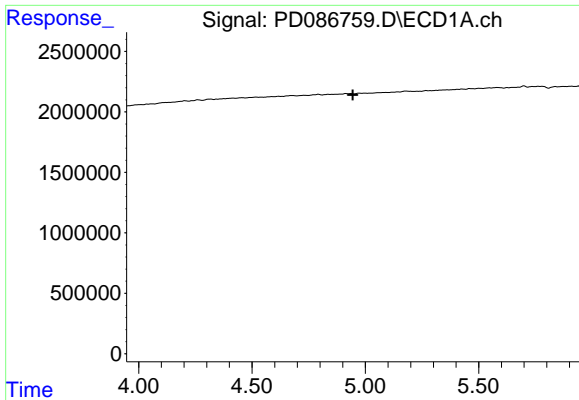
#1 Tetrachloro-m-xylene
 R.T.: 2.890 min
 Delta R.T.: 0.001 min
 Response: 268892
 Conc: 0.03 ng/ml



#2 alpha-BHC
 R.T.: 0.000 min
 Exp R.T. : 4.012 min
 Response: 0
 Conc: N.D.



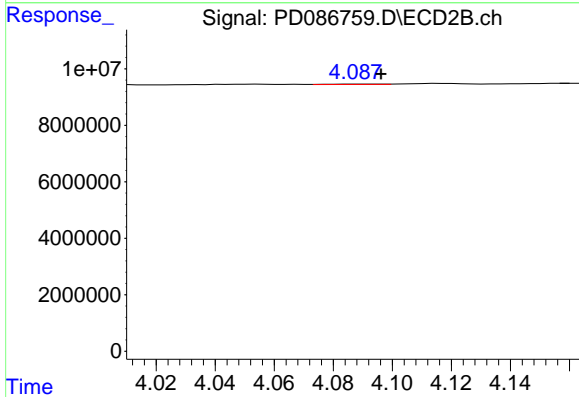
#2 alpha-BHC
 R.T.: 3.390 min
 Delta R.T.: -0.013 min
 Response: 67689
 Conc: 0.00 ng/ml



#4 Heptachlor

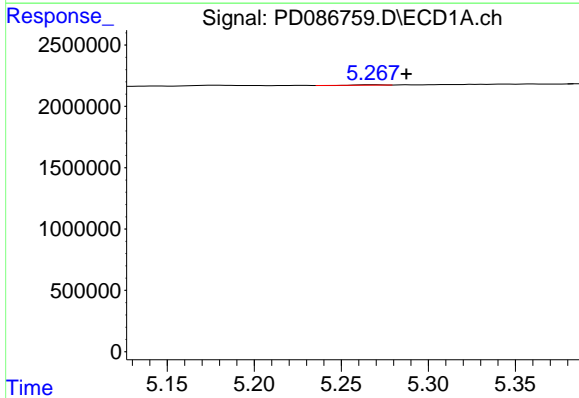
R.T.: 0.000 min
 Exp R.T.: 4.945 min
 Response: 0
 Conc: N.D.

Instrument : ECD_D
 ClientSampleId : HEXANE



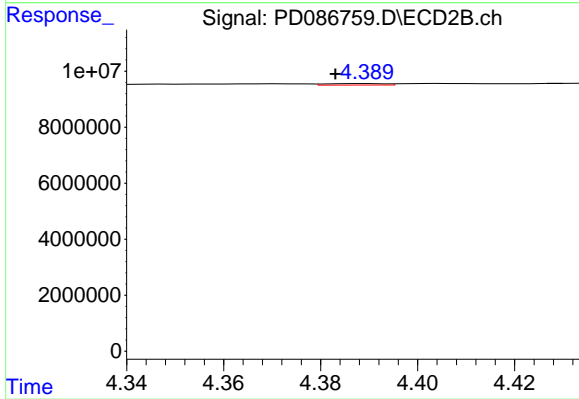
#4 Heptachlor

R.T.: 4.089 min
 Delta R.T.: -0.007 min
 Response: 158635
 Conc: 0.01 ng/ml



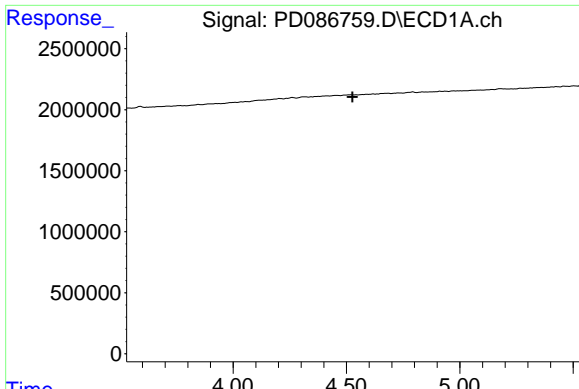
#5 Aldrin

R.T.: 5.269 min
 Delta R.T.: -0.019 min
 Response: 43494
 Conc: 0.02 ng/ml



#5 Aldrin

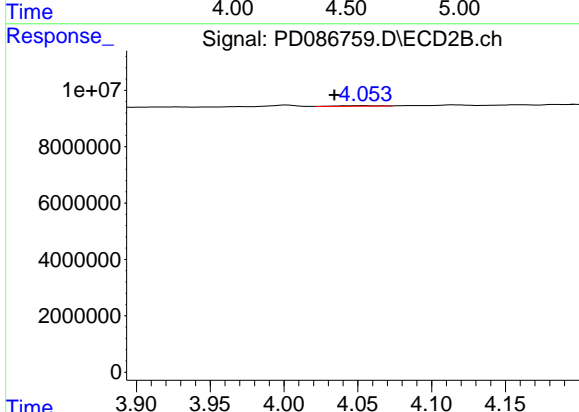
R.T.: 4.390 min
 Delta R.T.: 0.007 min
 Response: 450924
 Conc: 0.03 ng/ml



#6 beta-BHC

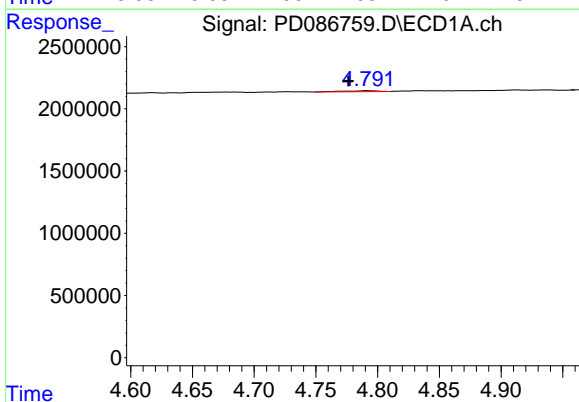
R.T.: 0.000 min
 Exp R.T.: 4.527 min
 Response: 0
 Conc: N.D.

Instrument :
 ECD_D
 ClientSampleId :
 HEXANE



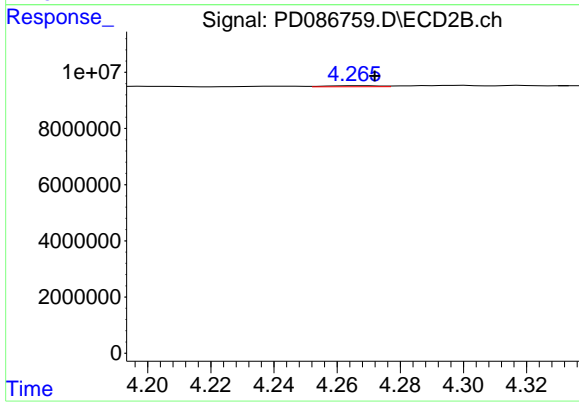
#6 beta-BHC

R.T.: 4.055 min
 Delta R.T.: 0.021 min
 Response: 333998
 Conc: 0.05 ng/ml



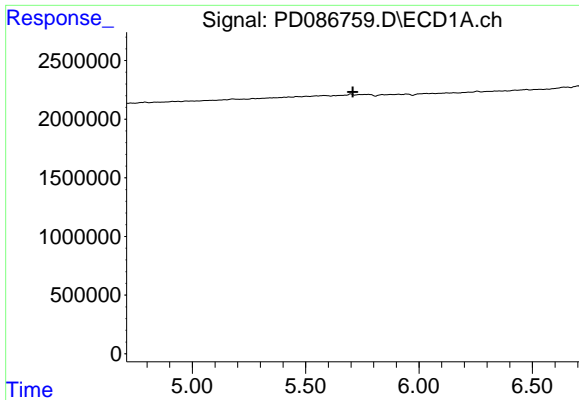
#7 delta-BHC

R.T.: 4.792 min
 Delta R.T.: 0.016 min
 Response: 135688
 Conc: 0.05 ng/ml



#7 delta-BHC

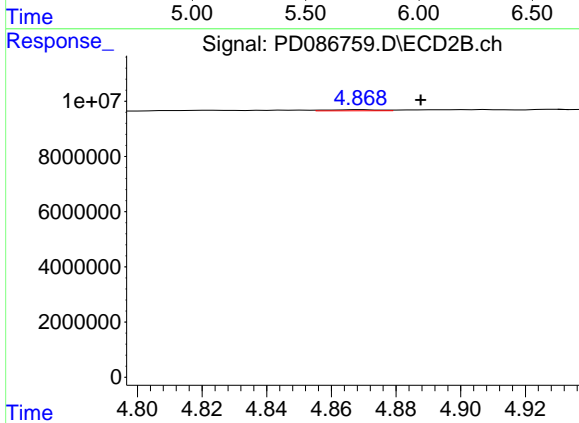
R.T.: 4.267 min
 Delta R.T.: -0.005 min
 Response: 439782
 Conc: 0.03 ng/ml



#8 Heptachlor epoxide

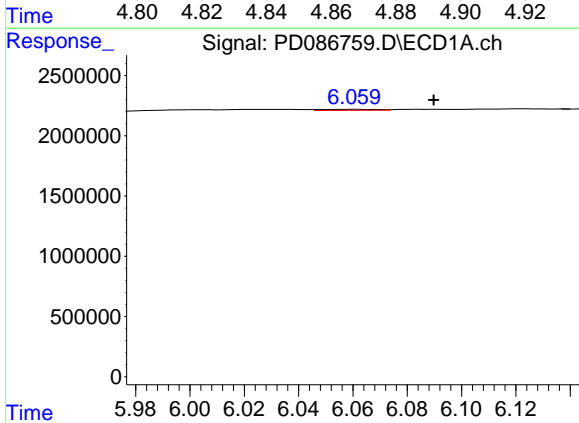
R.T.: 0.000 min
 Exp R.T.: 5.707 min
 Response: 0
 Conc: N.D.

Instrument :
 ECD_D
 ClientSampleId :
 HEXANE



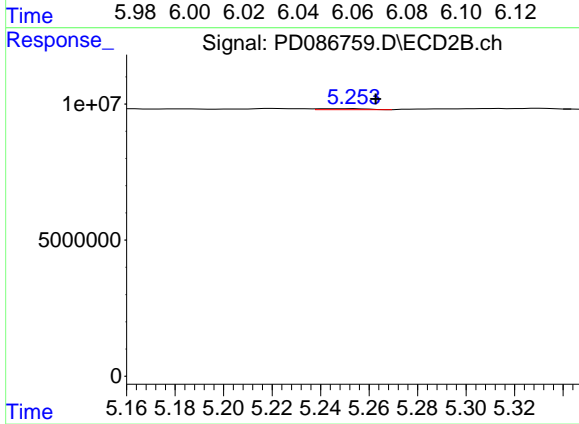
#8 Heptachlor epoxide

R.T.: 4.869 min
 Delta R.T.: -0.018 min
 Response: 444755
 Conc: 0.03 ng/ml



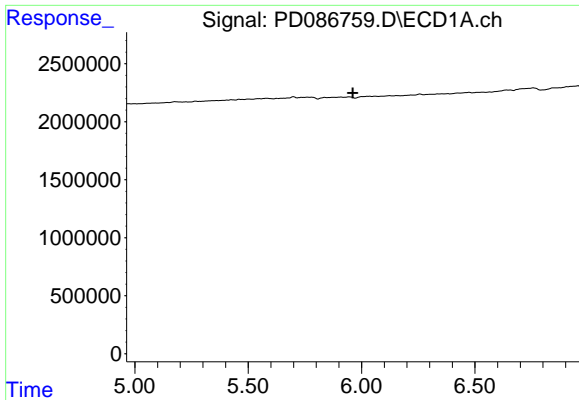
#9 Endosulfan I

R.T.: 6.061 min
 Delta R.T.: -0.029 min
 Response: 128165
 Conc: 0.06 ng/ml



#9 Endosulfan I

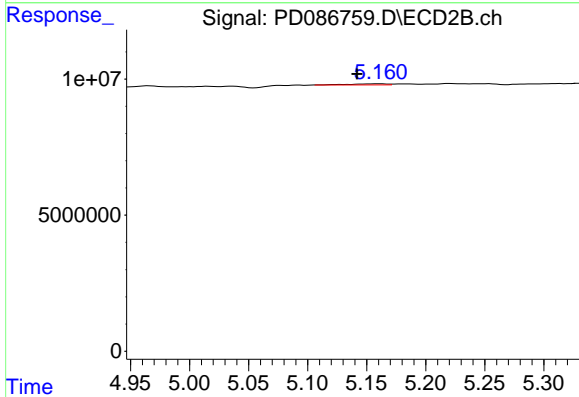
R.T.: 5.253 min
 Delta R.T.: -0.009 min
 Response: 514050
 Conc: 0.04 ng/ml



#10 gamma-Chlordane

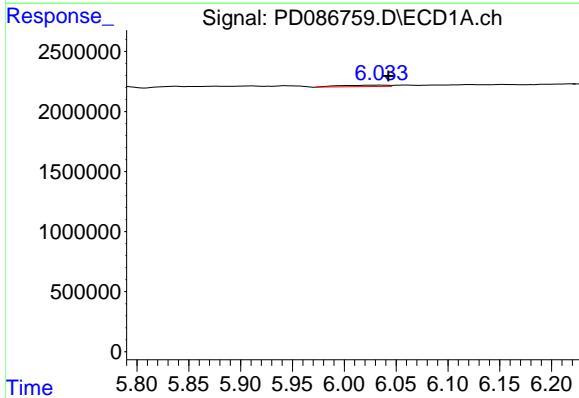
R.T.: 0.000 min
 Exp R.T.: 5.961 min
 Response: 0
 Conc: N.D.

Instrument :
 ECD_D
 ClientSampleId :
 HEXANE



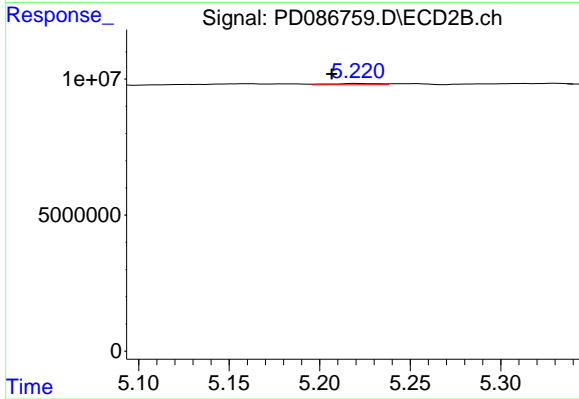
#10 gamma-Chlordane

R.T.: 5.161 min
 Delta R.T.: 0.019 min
 Response: 829161
 Conc: 0.06 ng/ml



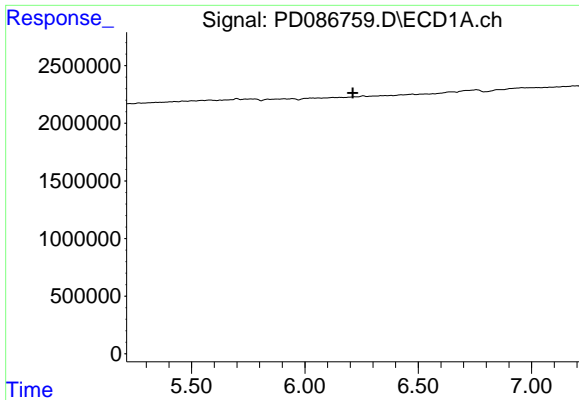
#11 alpha-Chlordane

R.T.: 6.035 min
 Delta R.T.: -0.007 min
 Response: 388889
 Conc: 0.16 ng/ml



#11 alpha-Chlordane

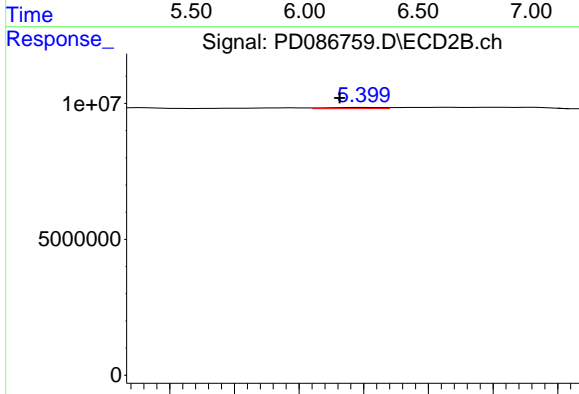
R.T.: 5.221 min
 Delta R.T.: 0.014 min
 Response: 867204
 Conc: 0.06 ng/ml



#12 4,4'-DDE

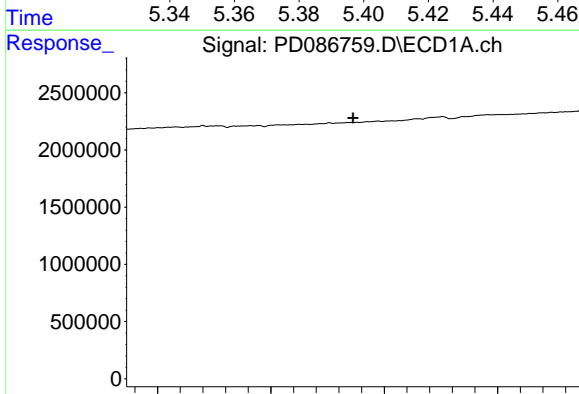
R.T.: 0.000 min
 Exp R.T.: 6.211 min
 Response: 0
 Conc: N.D.

Instrument :
 ECD_D
 ClientSampleId :
 HEXANE



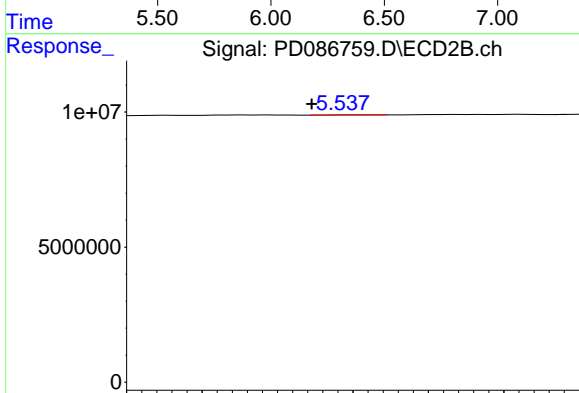
#12 4,4'-DDE

R.T.: 5.401 min
 Delta R.T.: 0.008 min
 Response: 517384
 Conc: 0.04 ng/ml



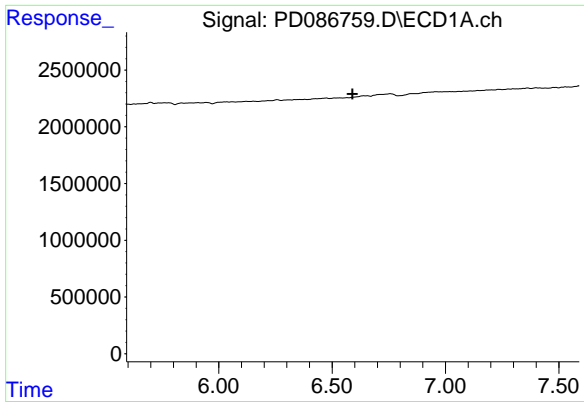
#13 Dieldrin

R.T.: 0.000 min
 Exp R.T.: 6.363 min
 Response: 0
 Conc: N.D.



#13 Dieldrin

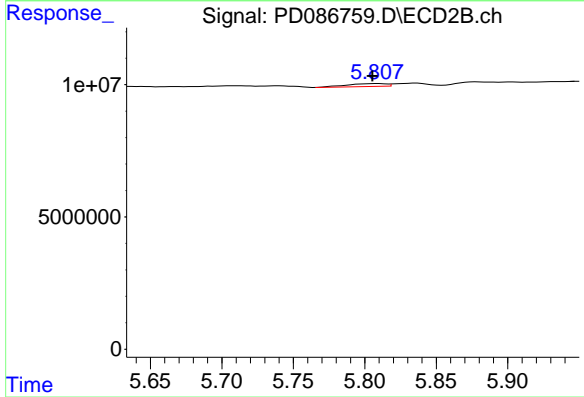
R.T.: 5.539 min
 Delta R.T.: 0.009 min
 Response: 45288
 Conc: 0.00 ng/ml



#14 Endrin

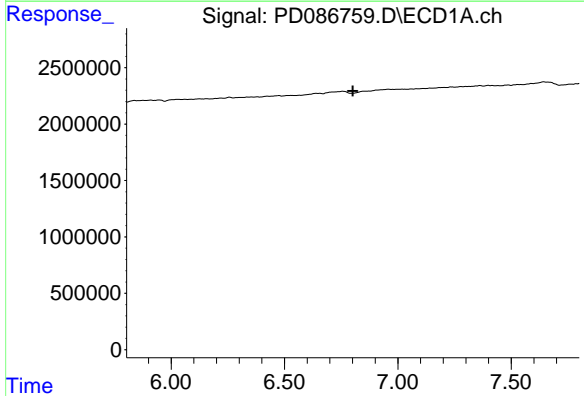
R.T.: 0.000 min
 Exp R.T. : 6.590 min
 Response: 0
 Conc: N.D.

Instrument :
 ECD_D
 ClientSampleId :
 HEXANE



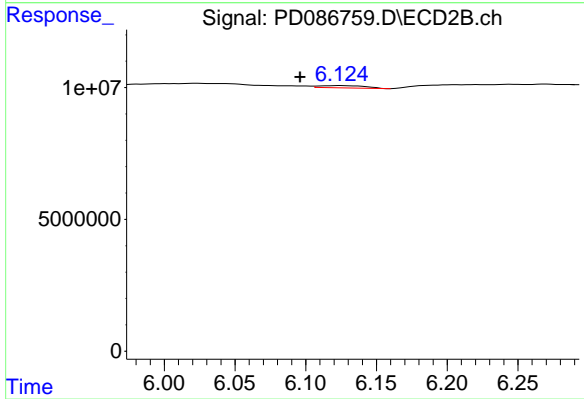
#14 Endrin

R.T.: 5.809 min
 Delta R.T.: 0.003 min
 Response: 2114874
 Conc: 0.17 ng/ml



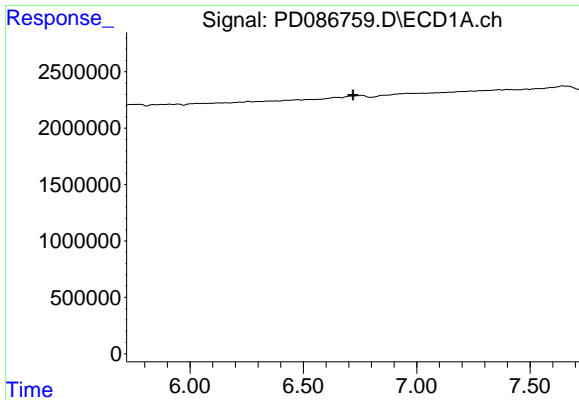
#15 Endosulfan II

R.T.: 0.000 min
 Exp R.T. : 6.801 min
 Response: 0
 Conc: N.D.



#15 Endosulfan II

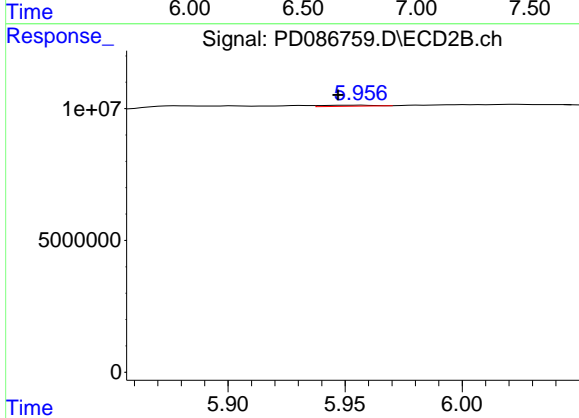
R.T.: 6.125 min
 Delta R.T.: 0.029 min
 Response: 1911571
 Conc: 0.16 ng/ml



#16 4,4'-DDD

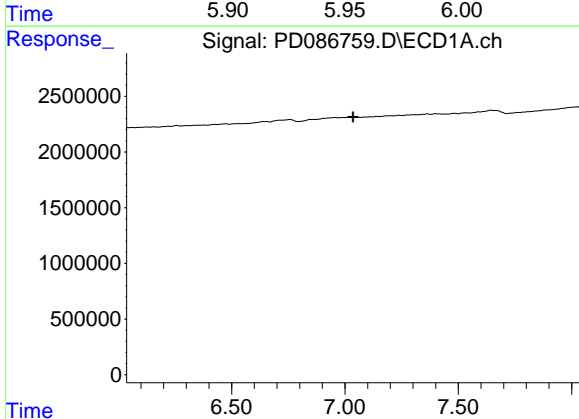
R.T.: 0.000 min
 Exp R.T.: 6.720 min
 Response: 0
 Conc: N.D.

Instrument :
 ECD_D
 ClientSampleId :
 HEXANE



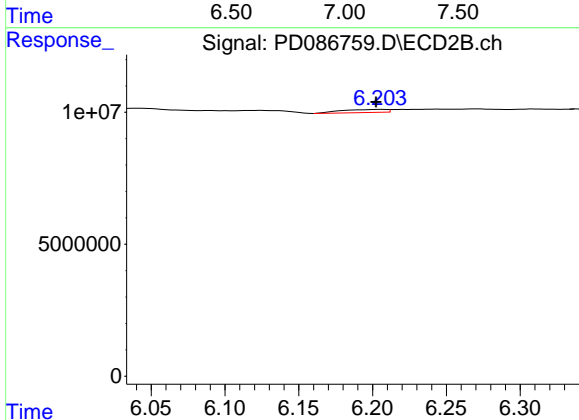
#16 4,4'-DDD

R.T.: 5.957 min
 Delta R.T.: 0.010 min
 Response: 649748
 Conc: 0.06 ng/ml



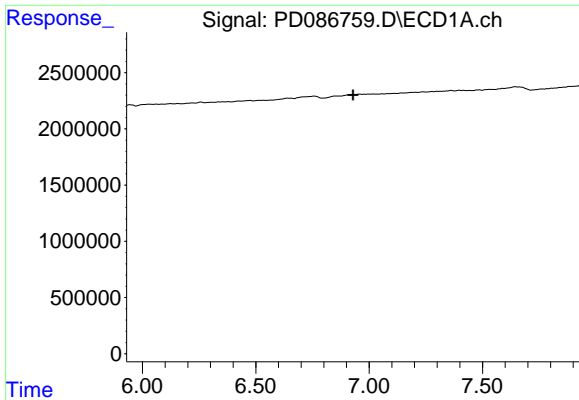
#17 4,4'-DDT

R.T.: 0.000 min
 Exp R.T.: 7.036 min
 Response: 0
 Conc: N.D.



#17 4,4'-DDT

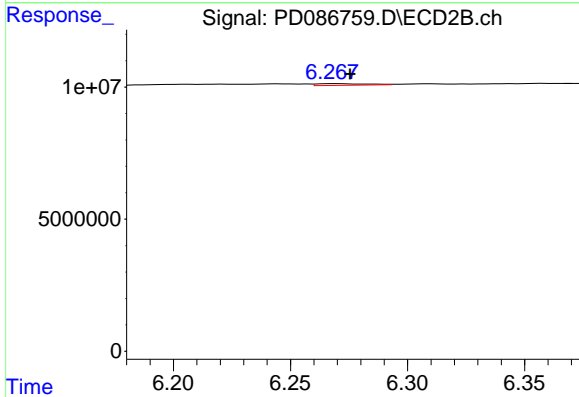
R.T.: 6.206 min
 Delta R.T.: 0.004 min
 Response: 2434418
 Conc: 0.21 ng/ml



#18 Endrin aldehyde

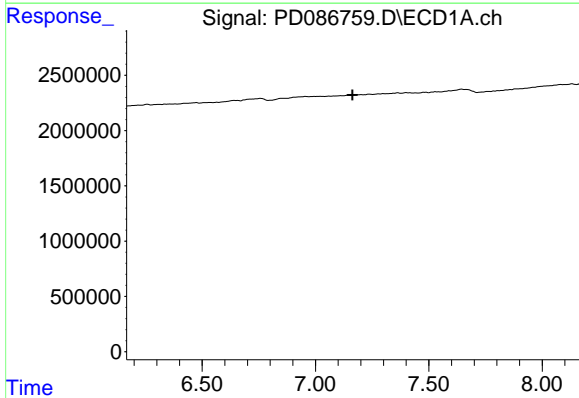
R.T.: 0.000 min
 Exp R.T. : 6.930 min
 Response: 0
 Conc: N.D.

Instrument : ECD_D
 ClientSampleId : HEXANE



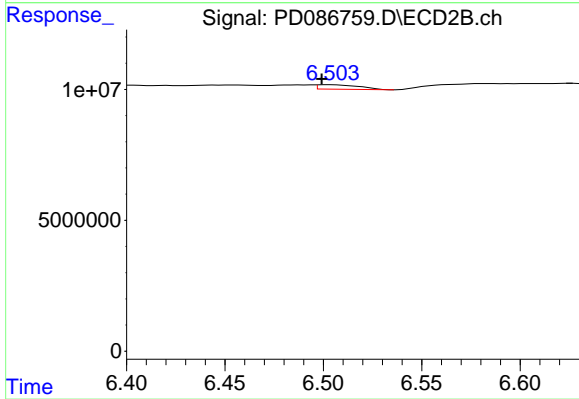
#18 Endrin aldehyde

R.T.: 6.270 min
 Delta R.T.: -0.006 min
 Response: 927424
 Conc: 0.10 ng/ml



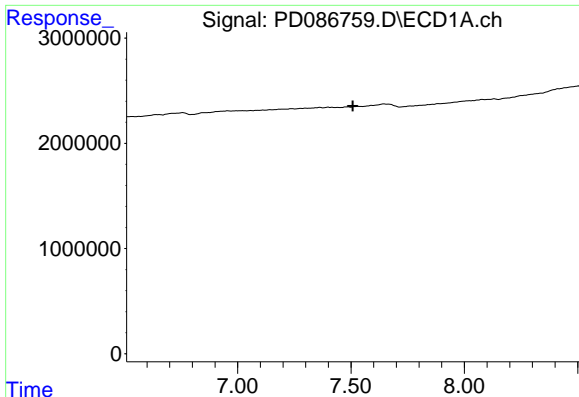
#19 Endosulfan Sulfate

R.T.: 0.000 min
 Exp R.T. : 7.163 min
 Response: 0
 Conc: N.D.



#19 Endosulfan Sulfate

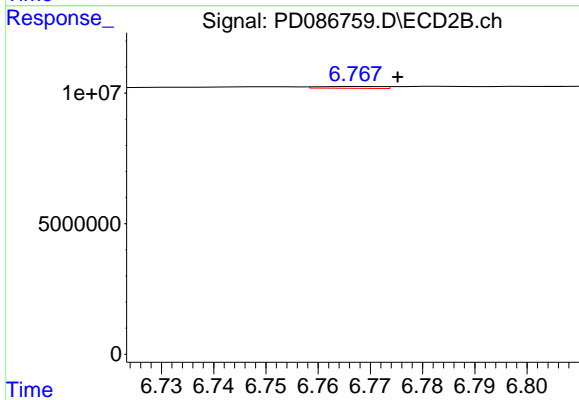
R.T.: 6.503 min
 Delta R.T.: 0.004 min
 Response: 2480800
 Conc: 0.21 ng/ml



#20 Methoxychlor

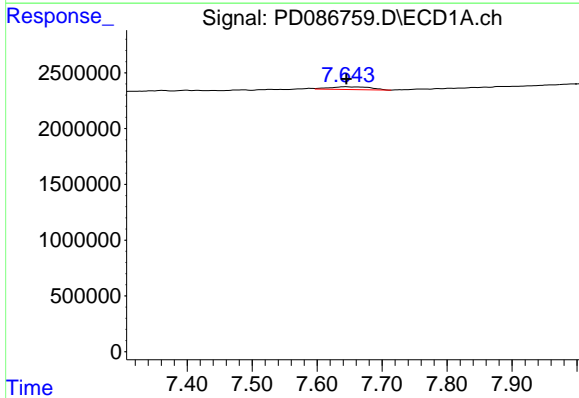
R.T.: 0.000 min
 Exp R.T.: 7.508 min
 Response: 0
 Conc: N.D.

Instrument :
 ECD_D
 ClientSampleId :
 HEXANE



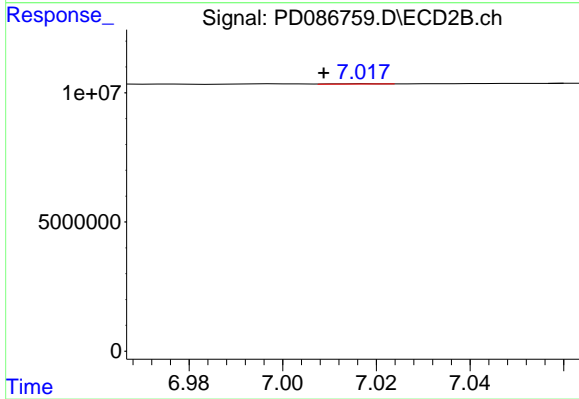
#20 Methoxychlor

R.T.: 6.768 min
 Delta R.T.: -0.007 min
 Response: 582072
 Conc: 0.09 ng/ml



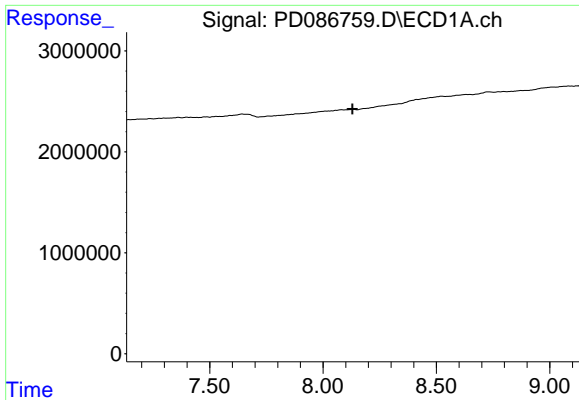
#21 Endrin ketone

R.T.: 7.644 min
 Delta R.T.: 0.000 min
 Response: 1068690
 Conc: 0.47 ng/ml



#21 Endrin ketone

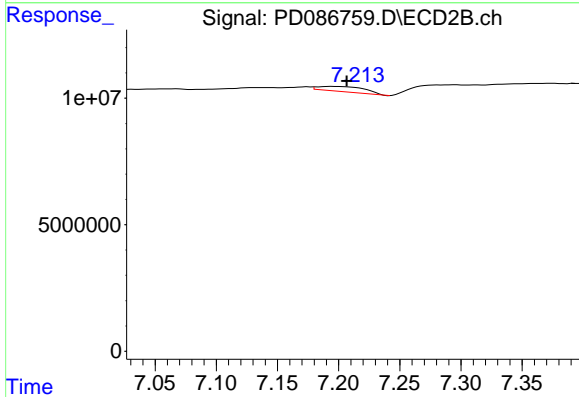
R.T.: 7.018 min
 Delta R.T.: 0.009 min
 Response: 63526
 Conc: 0.00 ng/ml



#22 Mirex

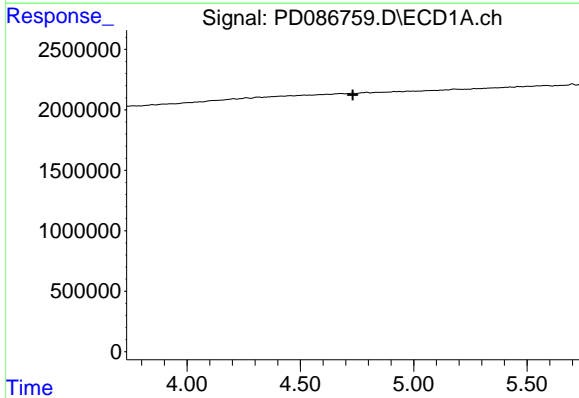
R.T.: 0.000 min
 Exp R.T. : 8.130 min
 Response: 0
 Conc: N.D.

Instrument :
 ECD_D
 ClientSampleId :
 HEXANE



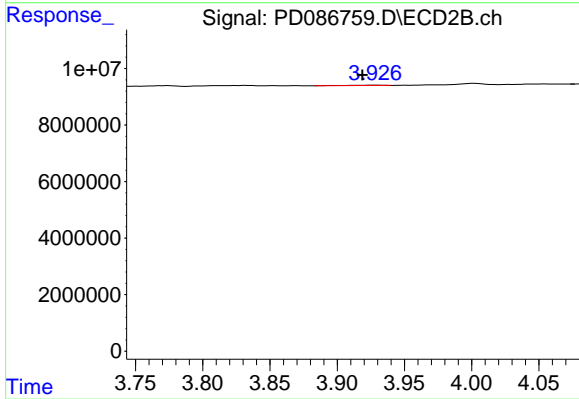
#22 Mirex

R.T.: 7.197 min
 Delta R.T.: -0.010 min
 Response: 5363933
 Conc: 0.52 ng/ml



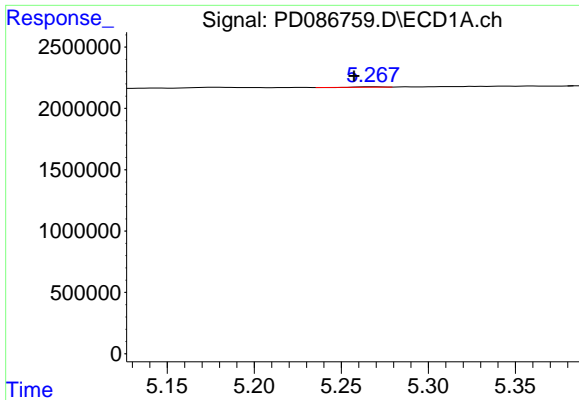
#23 Chlordane-1

R.T.: 0.000 min
 Exp R.T. : 4.731 min
 Response: 0
 Conc: N.D.



#23 Chlordane-1

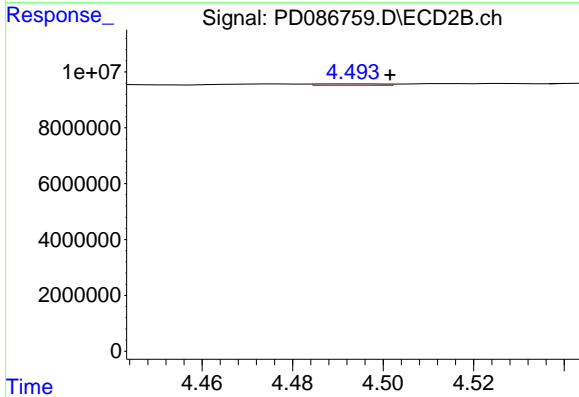
R.T.: 3.928 min
 Delta R.T.: 0.009 min
 Response: 233919
 Conc: 0.50 ng/ml



#24 Chlordane-2

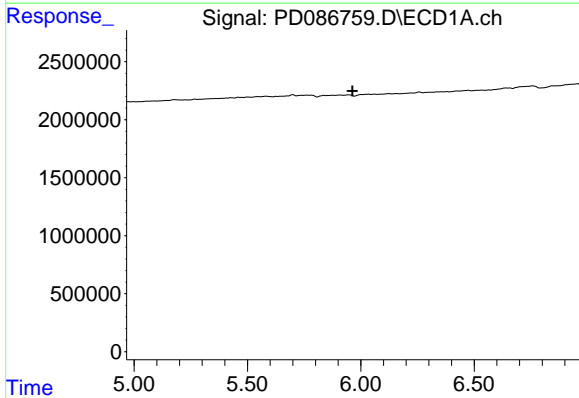
R.T.: 5.269 min
 Delta R.T.: 0.011 min
 Response: 43494
 Conc: 0.45 ng/ml

Instrument :
 ECD_D
 ClientSampleId :
 HEXANE



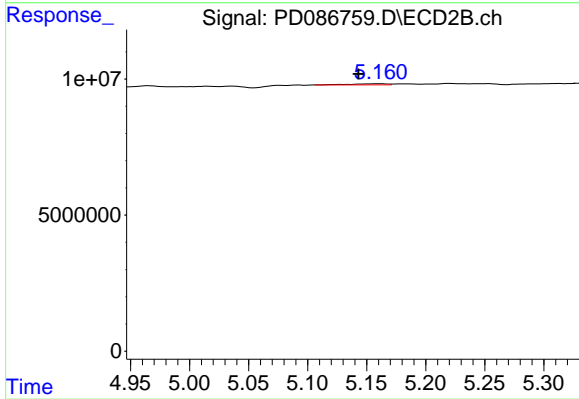
#24 Chlordane-2

R.T.: 4.494 min
 Delta R.T.: -0.008 min
 Response: 534444
 Conc: 1.08 ng/ml



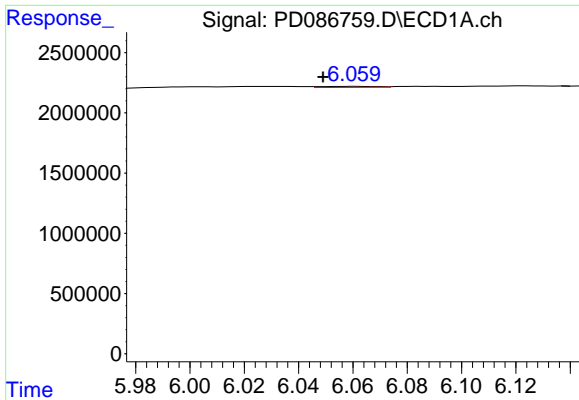
#25 Chlordane-3

R.T.: 0.000 min
 Exp R.T. : 5.963 min
 Response: 0
 Conc: N.D.



#25 Chlordane-3

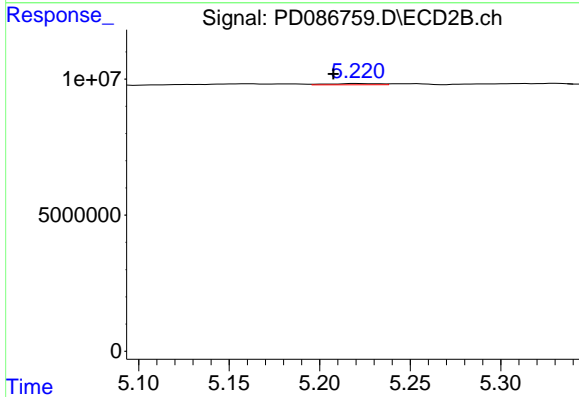
R.T.: 5.161 min
 Delta R.T.: 0.018 min
 Response: 829161
 Conc: 0.56 ng/ml



#26 Chlordane-4

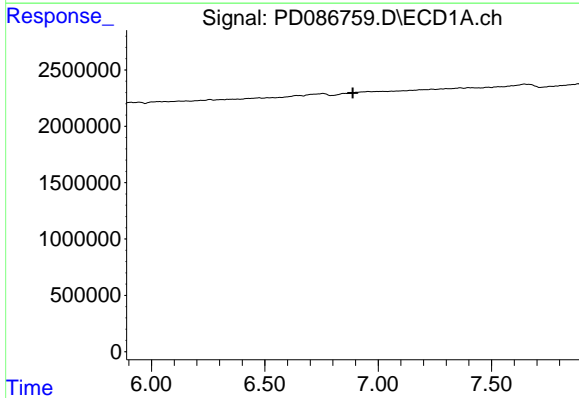
R.T.: 6.061 min
 Delta R.T.: 0.012 min
 Response: 128165
 Conc: 0.28 ng/ml

Instrument :
 ECD_D
 ClientSampleId :
 HEXANE



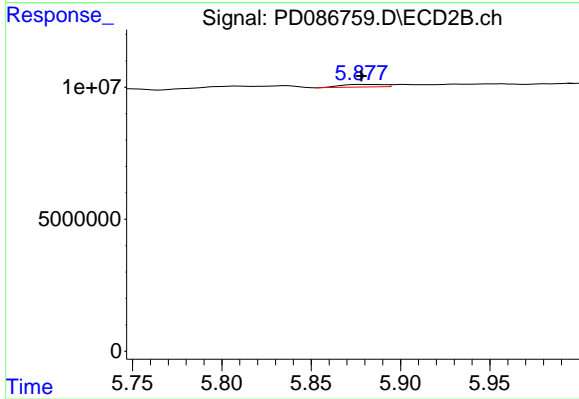
#26 Chlordane-4

R.T.: 5.221 min
 Delta R.T.: 0.013 min
 Response: 867204
 Conc: 0.69 ng/ml



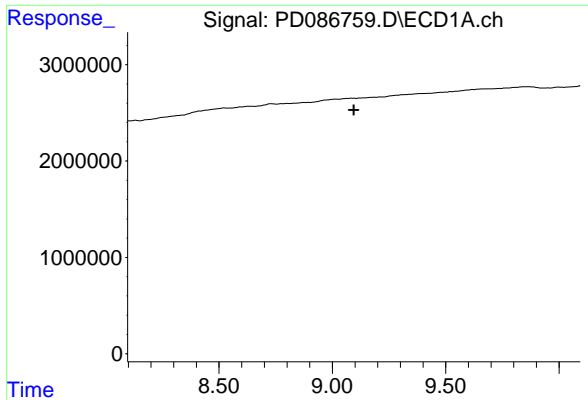
#27 Chlordane-5

R.T.: 0.000 min
 Exp R.T. : 6.888 min
 Response: 0
 Conc: N.D.



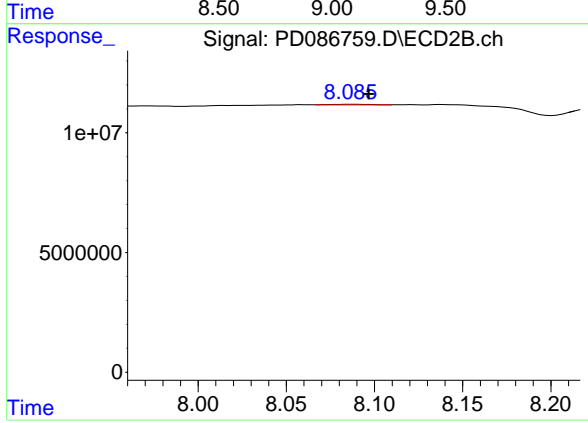
#27 Chlordane-5

R.T.: 5.878 min
 Delta R.T.: 0.000 min
 Response: 1587044
 Conc: 3.89 ng/ml



#28 Decachlorobiphenyl
 R.T.: 0.000 min
 Exp R.T.: 9.094 min
 Response: 0
 Conc: N.D.

Instrument : ECD_D
 ClientSampleId : HEXANE



#28 Decachlorobiphenyl
 R.T.: 8.089 min
 Delta R.T.: -0.008 min
 Response: 446691
 Conc: 0.04 ng/ml