

Data Path : Z:\pestpcbsrv\HPCHEM1\ECD_D\Data\PD111819\
 Data File : PD056075.D
 Signal(s) : Signal #1: ECD1A.ch Signal #2: ECD2B.ch
 Acq On : 18 Nov 2019 18:17
 Operator : SG\AJ
 Sample : K5820-10
 Misc :
 ALS Vial : 29 Sample Multiplier: 1

Instrument :
 ECD_D
 ClientSampleID :
 C0B03

Integration File signal 1: autoint1.e
 Integration File signal 2: autoint2.e
 Quant Time: Nov 19 01:31:15 2019
 Quant Method : Z:\pestpcbsrv\HPCHEM1\ECD_D\Method\PD110319CLP.M
 Quant Title : GC Extractables
 QLast Update : Sat Nov 02 07:20:38 2019
 Response via : Initial Calibration
 Integrator: ChemStation

Volume Inj. : 1 µl
 Signal #1 Phase : ZB-MR2 Signal #2 Phase: ZB-MR1
 Signal #1 Info : 30M x 0.32mm x0.2 Signal #2 Info : 30M x 0.32mm x 0.50µm

Compound	RT#1	RT#2	Resp#1	Resp#2	ng/ml	ng/ml

System Monitoring Compounds						
1) SA Tetrachlo...	3.289	3.963	21040771	28235247	27.951	26.943
27) SA Decachlor...	7.966	9.001	26416974	33354334	32.409	29.373
Target Compounds						
10) B trans-Chl...	0.000	6.046	0	5712367	N.D.	4.005
21) B Endrin ke...	0.000	7.737f	0	2212918	N.D.	1.678

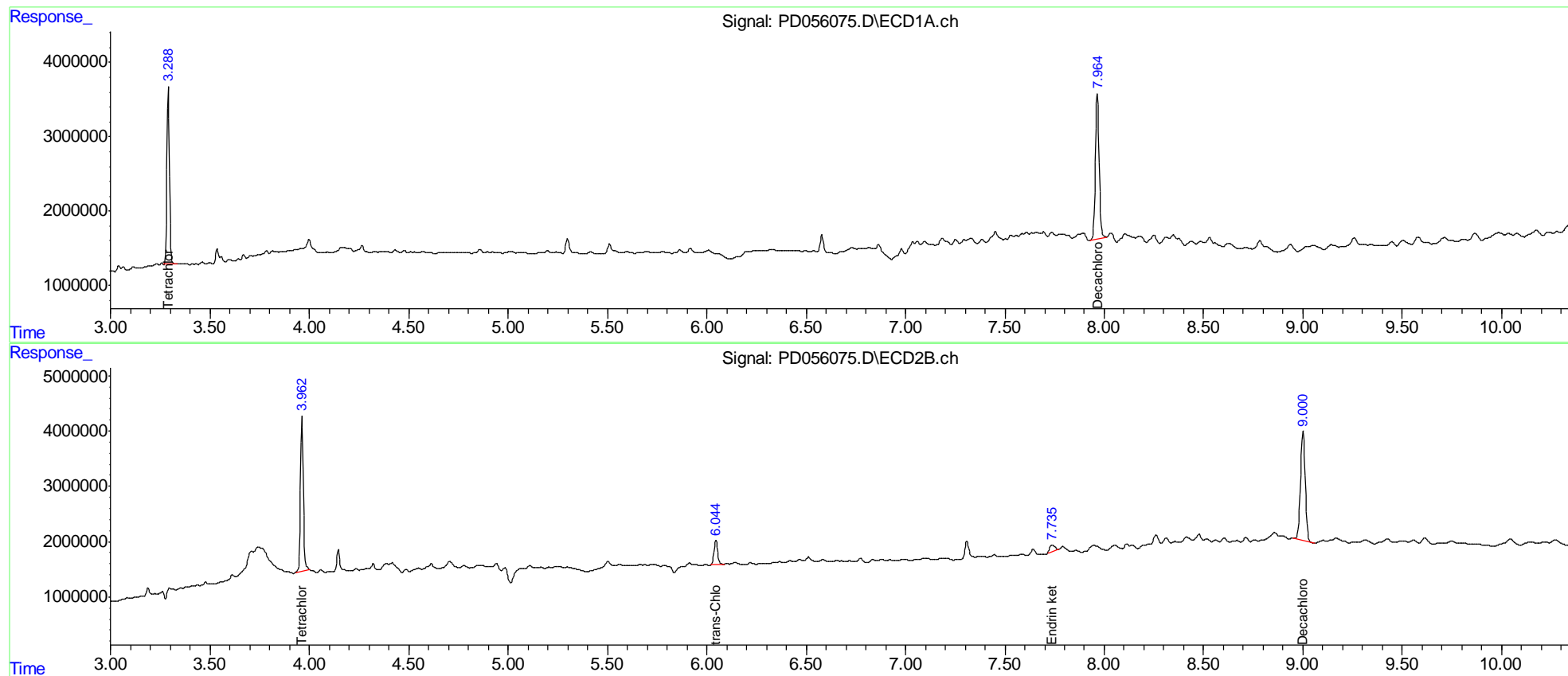
(f)=RT Delta > 1/2 Window (#)=Amounts differ by > 25% (m)=manual int.

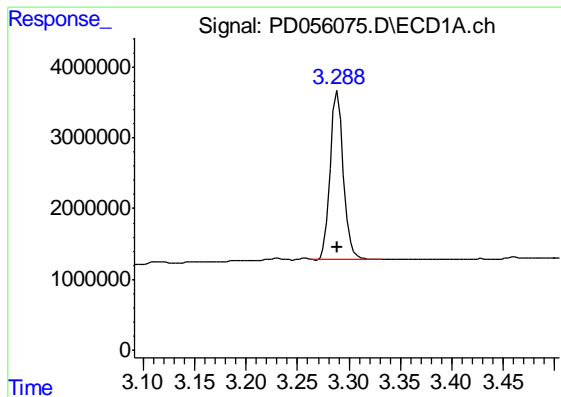
Data Path : Z:\pestpcbsrv\HPCHEM1\ECD_D\Data\PD111819\
 Data File : PD056075.D
 Signal(s) : Signal #1: ECD1A.ch Signal #2: ECD2B.ch
 Acq On : 18 Nov 2019 18:17
 Operator : SG\AJ
 Sample : K5820-10
 Misc :
 ALS Vial : 29 Sample Multiplier: 1

Instrument :
 ECD_D
 ClientSampled :
 C0B03

Integration File signal 1: autoint1.e
 Integration File signal 2: autoint2.e
 Quant Time: Nov 19 01:31:15 2019
 Quant Method : Z:\pestpcbsrv\HPCHEM1\ECD_D\Method\PD110319CLP.M
 Quant Title : GC Extractables
 QLast Update : Sat Nov 02 07:20:38 2019
 Response via : Initial Calibration
 Integrator: ChemStation

Volume Inj. : 1 µl
 Signal #1 Phase : ZB-MR2 Signal #2 Phase: ZB-MR1
 Signal #1 Info : 30M x 0.32mm x0.2 Signal #2 Info : 30M x 0.32mm x 0.50µm

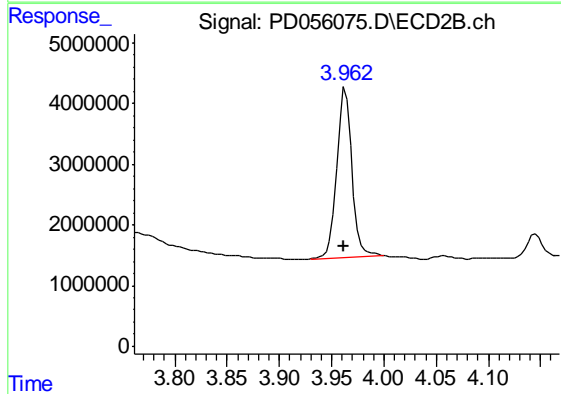




#1 Tetrachloro-m-xylene

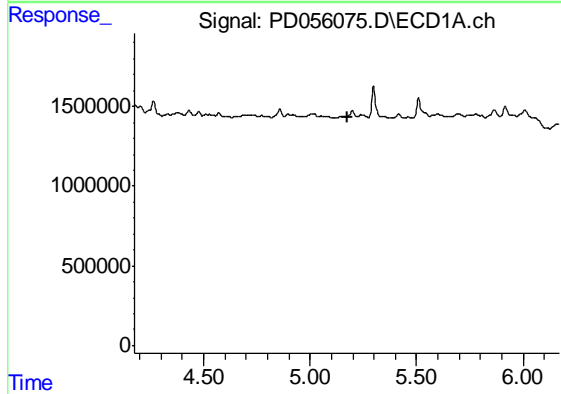
R.T.: 3.289 min
 Delta R.T.: 0.000 min
 Response: 21040771
 Conc: 27.95 ng/ml

Instrument :
 ECD_D
 ClientSampleId :
 C0B03



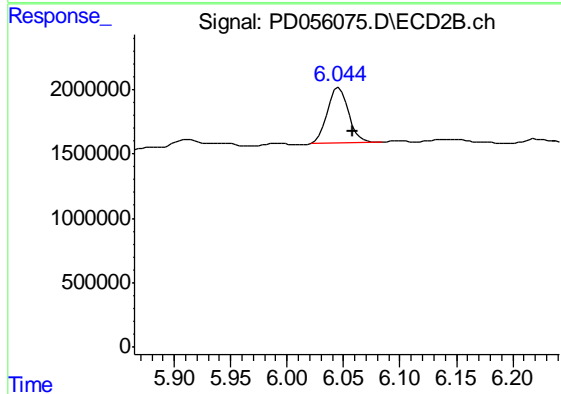
#1 Tetrachloro-m-xylene

R.T.: 3.963 min
 Delta R.T.: 0.002 min
 Response: 28235247
 Conc: 26.94 ng/ml



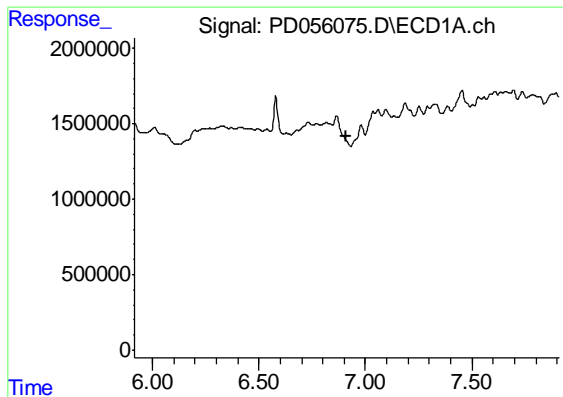
#10 trans-Chlordane

R.T.: 0.000 min
 Exp R.T. : 5.174 min
 Response: 0
 Conc: N.D.



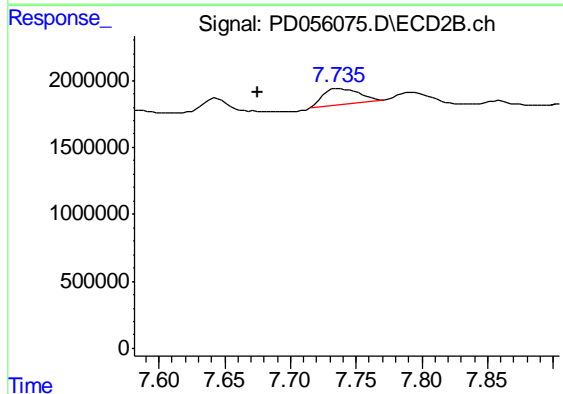
#10 trans-Chlordane

R.T.: 6.046 min
 Delta R.T.: -0.012 min
 Response: 5712367
 Conc: 4.00 ng/ml

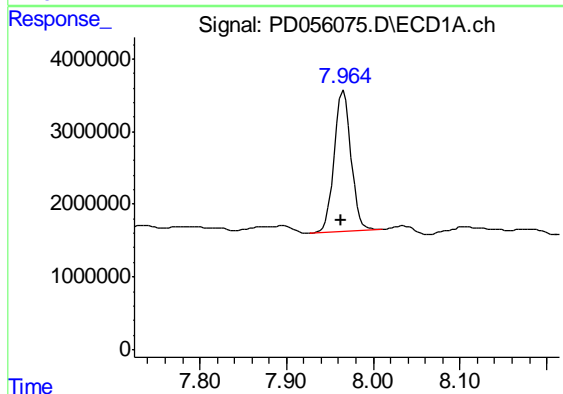


#21 Endrin ketone
 R.T.: 0.000 min
 Exp R.T. : 6.913 min
 Response: 0
 Conc: N.D.

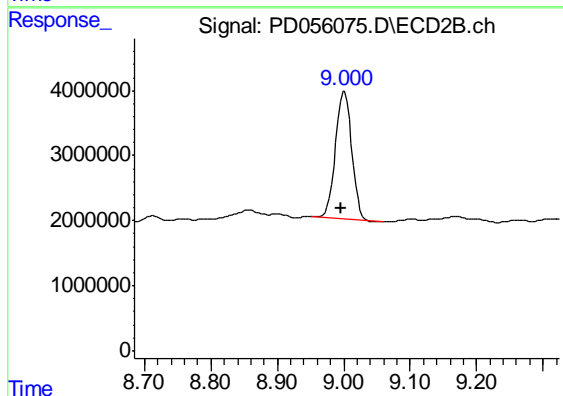
Instrument :
 ECD_D
 ClientSampleId :
 C0B03



#21 Endrin ketone
 R.T.: 7.737 min
 Delta R.T.: 0.062 min
 Response: 2212918
 Conc: 1.68 ng/ml



#27 Decachlorobiphenyl
 R.T.: 7.966 min
 Delta R.T.: 0.003 min
 Response: 26416974
 Conc: 32.41 ng/ml



#27 Decachlorobiphenyl
 R.T.: 9.001 min
 Delta R.T.: 0.004 min
 Response: 33354334
 Conc: 29.37 ng/ml