

Data Path : Z:\pestpcbsrv\HPCHEM1\ECD_D\Data\PD111819\
 Data File : PD056062.D
 Signal(s) : Signal #1: ECD1A.ch Signal #2: ECD2B.ch
 Acq On : 18 Nov 2019 13:16
 Operator : SG\AJ
 Sample : K5820-15
 Misc :
 ALS Vial : 17 Sample Multiplier: 1

Instrument :
 ECD_D
ClientSampled :
 C0B08

Manual Integrations
APPROVED
 Ankita
 11/19/2019 1:05:50 PM

Integration File signal 1: autoint1.e
 Integration File signal 2: autoint2.e
 Quant Time: Nov 19 01:27:54 2019
 Quant Method : Z:\pestpcbsrv\HPCHEM1\ECD_D\Method\PD110319CLP.M
 Quant Title : GC Extractables
 QLast Update : Sat Nov 02 07:20:38 2019
 Response via : Initial Calibration
 Integrator: ChemStation

Volume Inj. : 1 µl
 Signal #1 Phase : ZB-MR2 Signal #2 Phase: ZB-MR1
 Signal #1 Info : 30M x 0.32mm x0.2 Signal #2 Info : 30M x 0.32mm x 0.50µm

Compound	RT#1	RT#2	Resp#1	Resp#2	ng/ml	ng/ml

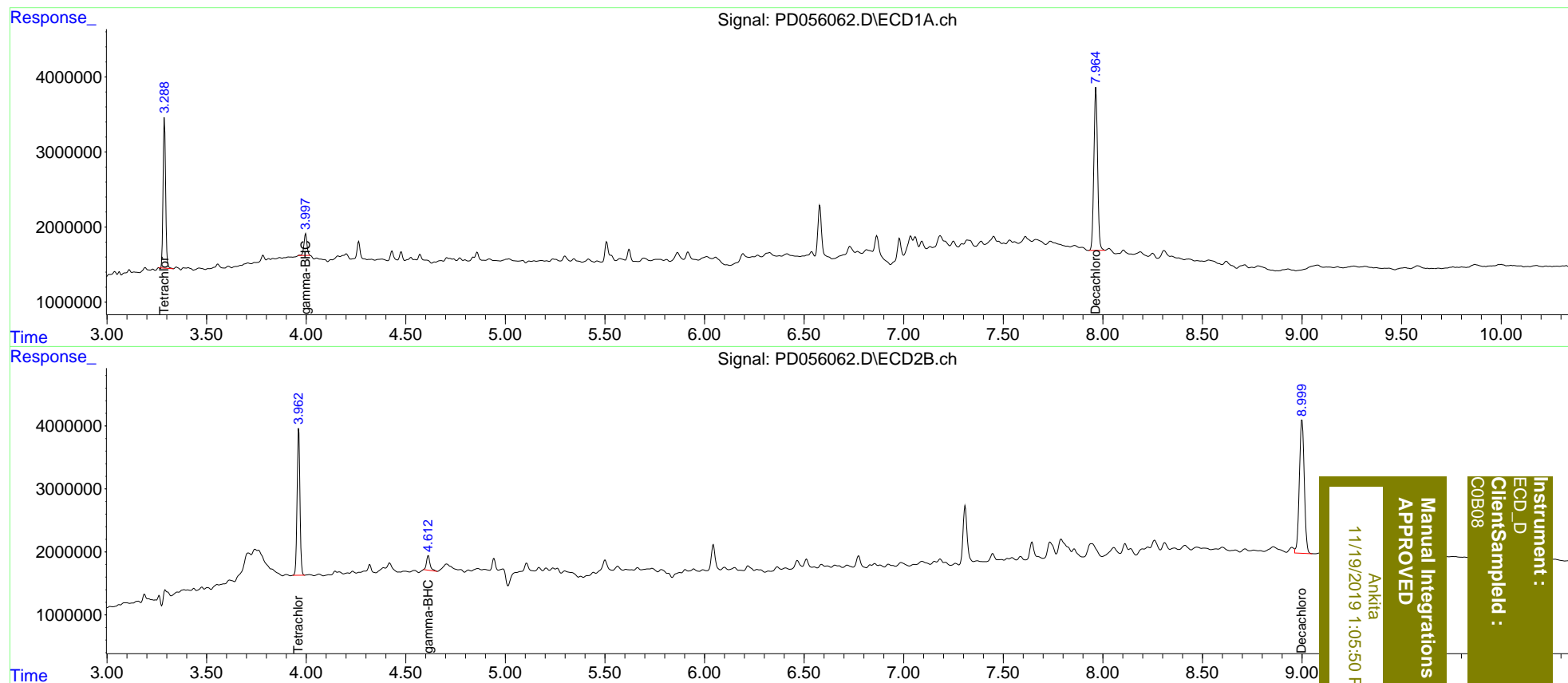
System Monitoring Compounds						
1) SA Tetrachlo...	3.289	3.963	17653661	23289048	23.451	22.223
27) SA Decachlor...	7.965	8.999	27947067	36290455	34.286	31.958m
Target Compounds						
3) MA gamma-BHC...	3.998	4.612	3034280	2853135	2.967	2.025m#

(f)=RT Delta > 1/2 Window (#)=Amounts differ by > 25% (m)=manual int.

Data Path : Z:\pestpcbsrv\HPCHEM1\ECD_D\Data\PD111819\
 Data File : PD056062.D
 Signal(s) : Signal #1: ECD1A.ch Signal #2: ECD2B.ch
 Acq On : 18 Nov 2019 13:16
 Operator : SG\AJ
 Sample : K5820-15
 Misc :
 ALS Vial : 17 Sample Multiplier: 1

Integration File signal 1: autoint1.e
 Integration File signal 2: autoint2.e
 Quant Time: Nov 19 01:27:54 2019
 Quant Method : Z:\pestpcbsrv\HPCHEM1\ECD_D\Method\PD110319CLP.M
 Quant Title : GC Extractables
 QLast Update : Sat Nov 02 07:20:38 2019
 Response via : Initial Calibration
 Integrator: ChemStation

Volume Inj. : 1 µl
 Signal #1 Phase : ZB-MR2 Signal #2 Phase: ZB-MR1
 Signal #1 Info : 30M x 0.32mm x0.2 Signal #2 Info : 30M x 0.32mm x 0.50µm



Instrument : ECD_D
 ClientSampleId : COB08
 Manual Integrations APPROVED
 Ankitia
 11/19/2019 1:05:50 PM