

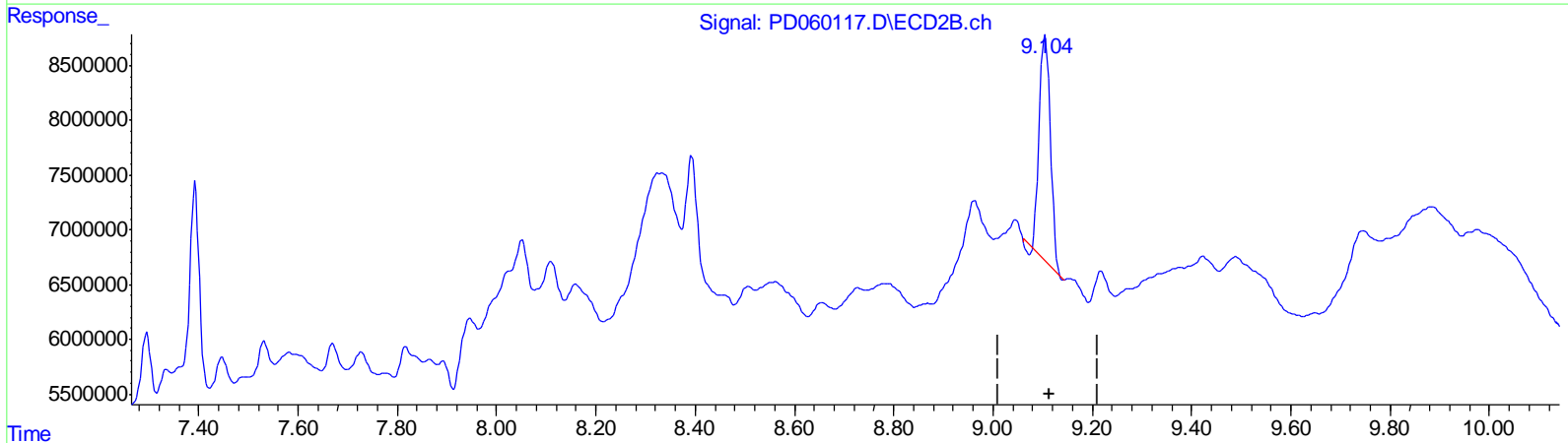
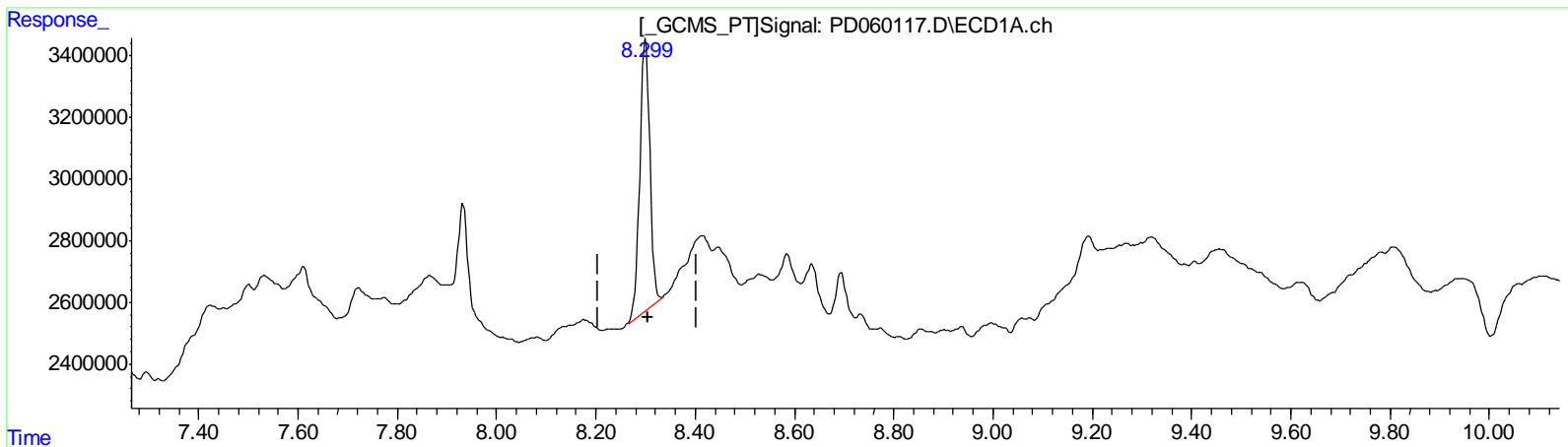
Data Path : Z:\pestpcbsrv\HPCHEM1\ECD\_D\Data\PD111820\  
 Data File : PD060117.D  
 Signal(s) : Signal #1: ECD1A.ch Signal #2: ECD2B.ch  
 Acq On : 18 Nov 2020 14:44  
 Operator : DD\AJ  
 Sample : L4710-21  
 Misc :  
 ALS Vial : 23 Sample Multiplier: 1

**Instrument :**  
 ECD\_D  
**ClientSampled :**  
 C0AY5

**Manual Integrations**  
**APPROVED**  
 Ankita  
 11/19/2020 1:21:10 PM

Integration File signal 1: autoint1.e  
 Integration File signal 2: autoint2.e  
 Quant Time: Nov 19 06:06:27 2020  
 Quant Method : Z:\pestpcbsrv\HPCHEM1\ECD\_D\Method\PD110320CLP.M  
 Quant Title : GC Extractables  
 QLast Update : Wed Nov 04 04:05:33 2020  
 Response via : Initial Calibration  
 Integrator: ChemStation

Volume Inj. : 1 µl  
 Signal #1 Phase : ZB-MR2 Signal #2 Phase: ZB-MR1  
 Signal #1 Info : 30M x 0.32mm x0.2 Signal #2 Info : 30M x 0.32mm x 0.50µm



QEdit

(27) Decachlorobiphenyl (SA)  
 8.300min 14.587 ng/ml  
 response 12120119

(27) Decachlorobiphenyl #2 (SA)  
 9.105min 13.090 ng/ml  
 response 32202147

(+) = Expected Retention Time

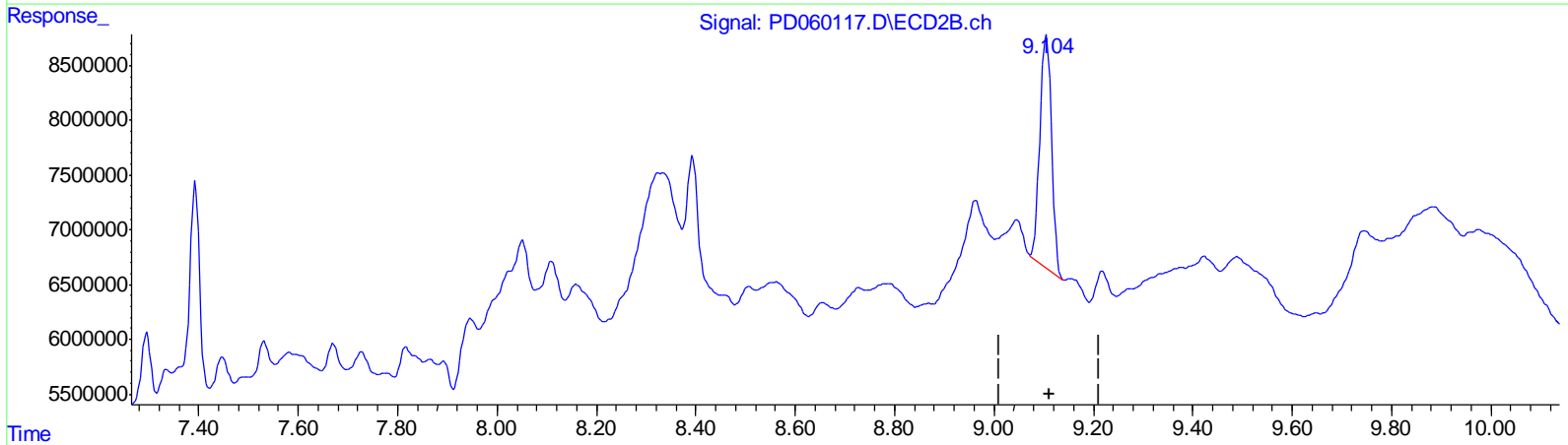
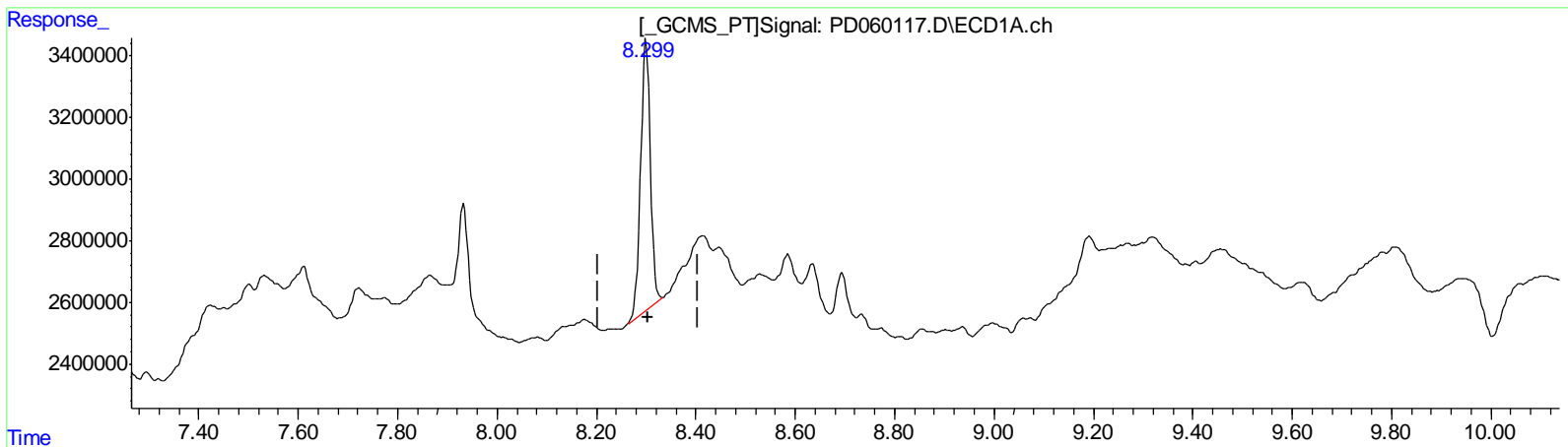
Data Path : Z:\pestpcbsrv\HPCHEM1\ECD\_D\Data\PD111820\  
 Data File : PD060117.D  
 Signal(s) : Signal #1: ECD1A.ch Signal #2: ECD2B.ch  
 Acq On : 18 Nov 2020 14:44  
 Operator : DD\AJ  
 Sample : L4710-21  
 Misc :  
 ALS Vial : 23 Sample Multiplier: 1

**Instrument :**  
 ECD\_D  
**ClientSampled :**  
 C0AY5

**Manual Integrations**  
**APPROVED**  
 Ankita  
 11/19/2020 1:21:10 PM

Integration File signal 1: autoint1.e  
 Integration File signal 2: autoint2.e  
 Quant Time: Nov 19 06:06:27 2020  
 Quant Method : Z:\pestpcbsrv\HPCHEM1\ECD\_D\Method\PD110320CLP.M  
 Quant Title : GC Extractables  
 QLast Update : Wed Nov 04 04:05:33 2020  
 Response via : Initial Calibration  
 Integrator: ChemStation

Volume Inj. : 1 µl  
 Signal #1 Phase : ZB-MR2 Signal #2 Phase: ZB-MR1  
 Signal #1 Info : 30M x 0.32mm x0.2 Signal #2 Info : 30M x 0.32mm x 0.50µm



QEdit

(27) Decachlorobiphenyl (SA)  
 8.300min 14.587 ng/ml  
 response 12120119

(27) Decachlorobiphenyl #2 (SA)  
 9.104min 14.150 ng/ml m  
 response 34808714

(+) = Expected Retention Time

Data Path : Z:\pestpcbsrv\HPCHEM1\ECD\_D\Data\PD111820\  
 Data File : PD060117.D  
 Signal(s) : Signal #1: ECD1A.ch Signal #2: ECD2B.ch  
 Acq On : 18 Nov 2020 14:44  
 Operator : DD\AJ  
 Sample : L4710-21  
 Misc :  
 ALS Vial : 23 Sample Multiplier: 1

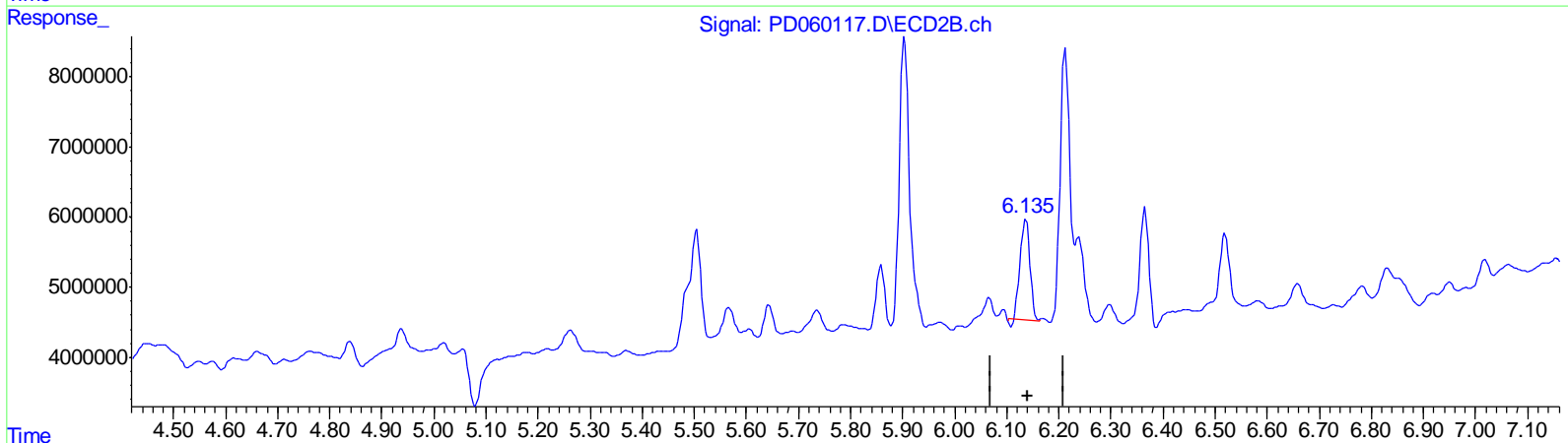
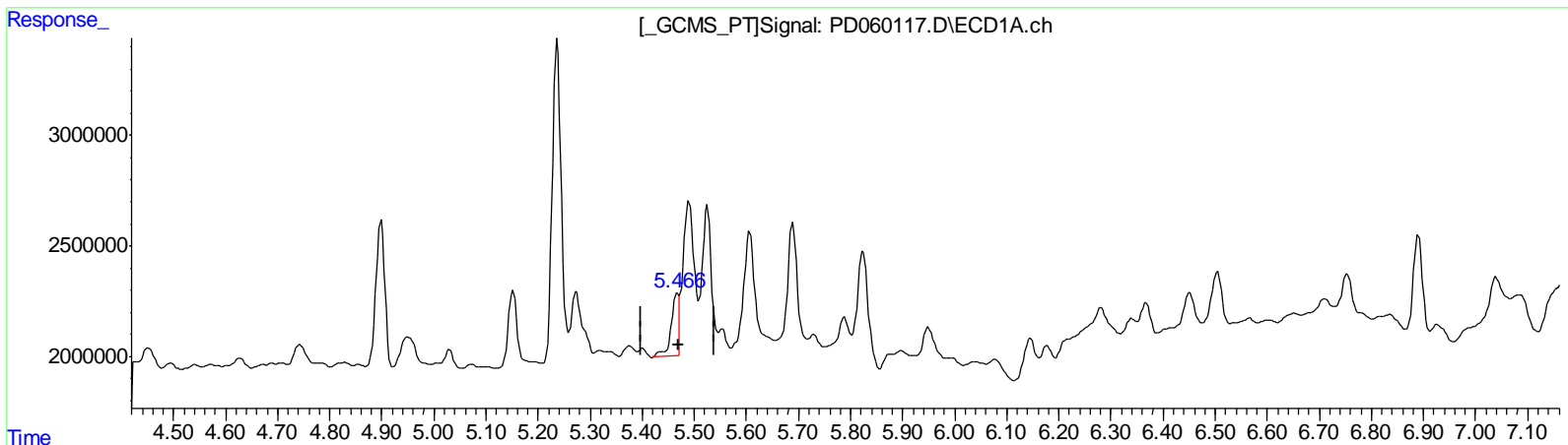
Instrument :  
 ECD\_D  
 ClientSampled :  
 C0AY5

Manual Integrations  
**APPROVED**

Ankita  
 11/19/2020 1:21:10 PM

Integration File signal 1: autoint1.e  
 Integration File signal 2: autoint2.e  
 Quant Time: Nov 19 06:06:27 2020  
 Quant Method : Z:\pestpcbsrv\HPCHEM1\ECD\_D\Method\PD110320CLP.M  
 Quant Title : GC Extractables  
 QLast Update : Wed Nov 04 04:05:33 2020  
 Response via : Initial Calibration  
 Integrator: ChemStation

Volume Inj. : 1 µl  
 Signal #1 Phase : ZB-MR2 Signal #2 Phase: ZB-MR1  
 Signal #1 Info : 30M x 0.32mm x0.2 Signal #2 Info : 30M x 0.32mm x 0.50µm



QEdit

(10) trans-Chlordane (B)

5.468min 2.616 ng/ml

response 2778293

(10) trans-Chlordane #2 (B)

6.137min 5.337 ng/ml

response 18337579

(+) = Expected Retention Time

Data Path : Z:\pestpcbsrv\HPCHEM1\ECD\_D\Data\PD111820\  
 Data File : PD060117.D  
 Signal(s) : Signal #1: ECD1A.ch Signal #2: ECD2B.ch  
 Acq On : 18 Nov 2020 14:44  
 Operator : DD\AJ  
 Sample : L4710-21  
 Misc :  
 ALS Vial : 23 Sample Multiplier: 1

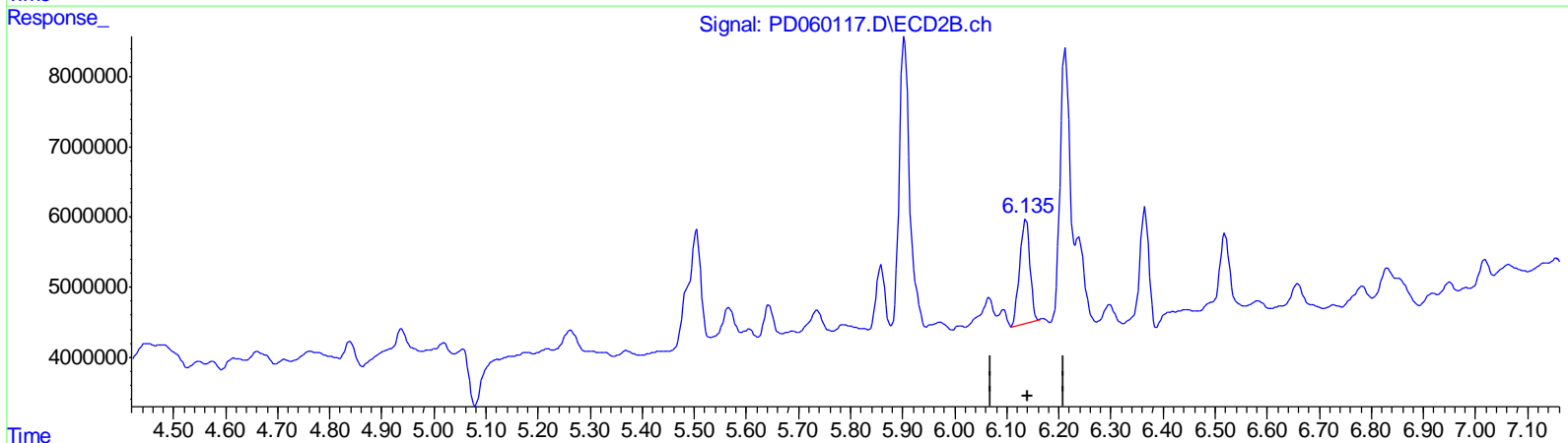
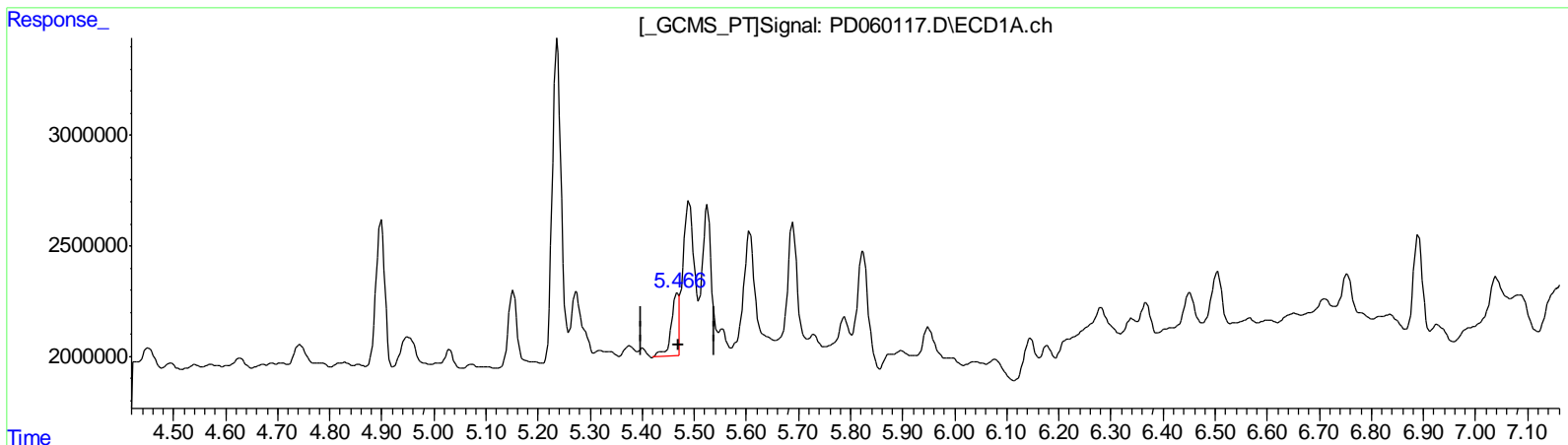
Instrument :  
 ECD\_D  
 ClientSampled :  
 C0AY5

Manual Integrations  
 APPROVED

Ankita  
 11/19/2020 1:21:10 PM

Integration File signal 1: autoint1.e  
 Integration File signal 2: autoint2.e  
 Quant Time: Nov 19 06:06:27 2020  
 Quant Method : Z:\pestpcbsrv\HPCHEM1\ECD\_D\Method\PD110320CLP.M  
 Quant Title : GC Extractables  
 QLast Update : Wed Nov 04 04:05:33 2020  
 Response via : Initial Calibration  
 Integrator: ChemStation

Volume Inj. : 1 µl  
 Signal #1 Phase : ZB-MR2 Signal #2 Phase: ZB-MR1  
 Signal #1 Info : 30M x 0.32mm x0.2 Signal #2 Info : 30M x 0.32mm x 0.50µm



QEdit

(10) trans-Chlordane (B)  
 5.468min 2.616 ng/ml  
 response 2778293

(10) trans-Chlordane #2 (B)  
 6.135min 5.975 ng/ml m  
 response 20529766

(+) = Expected Retention Time

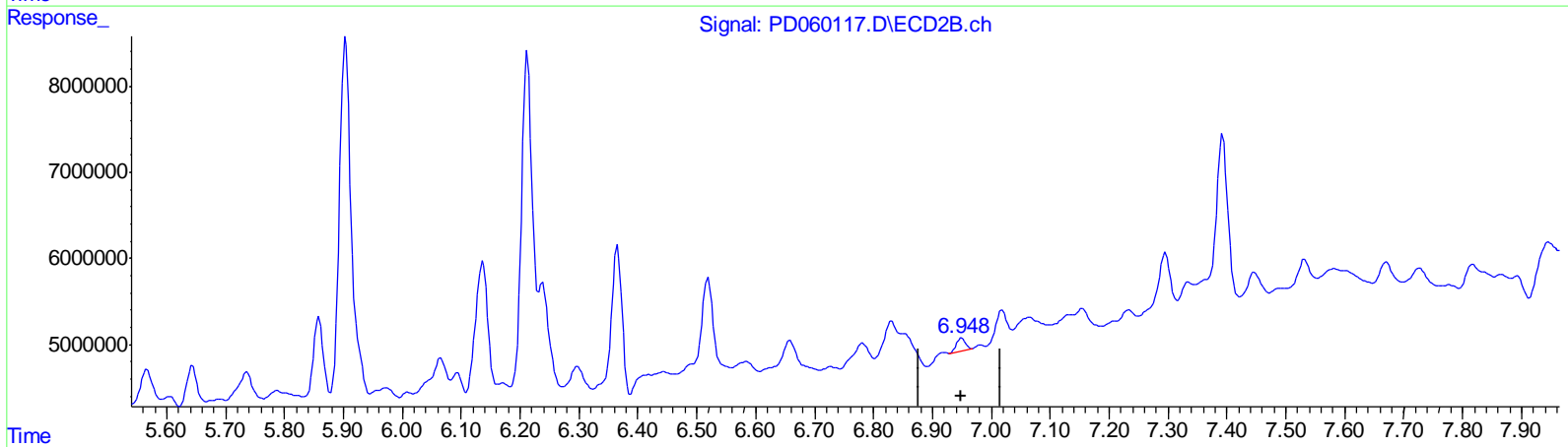
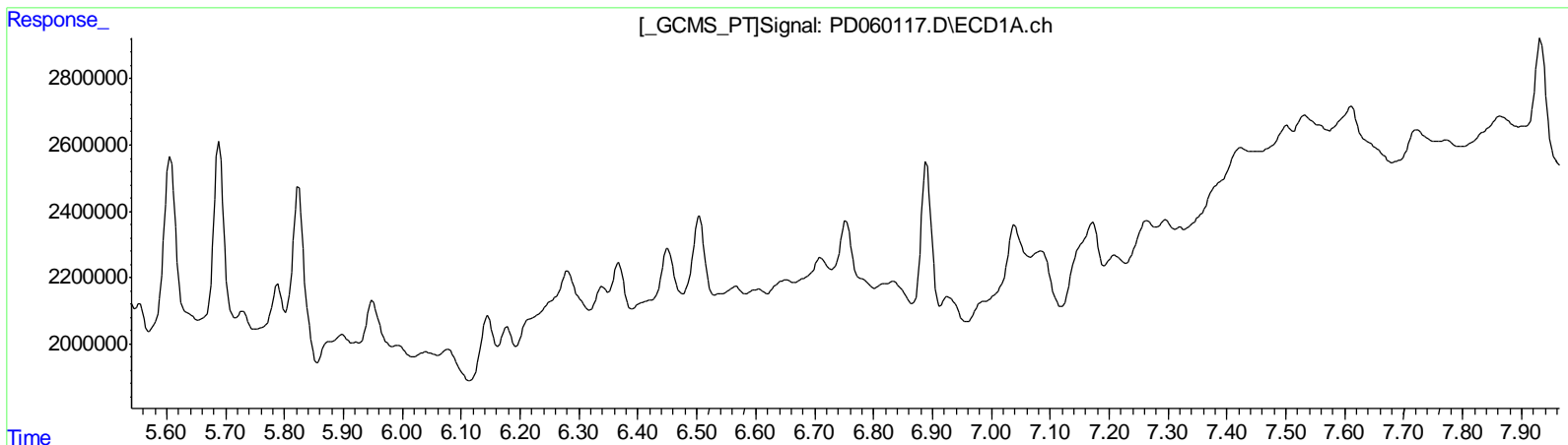
Data Path : Z:\pestpcbsrv\HPCHEM1\ECD\_D\Data\PD111820\  
 Data File : PD060117.D  
 Signal(s) : Signal #1: ECD1A.ch Signal #2: ECD2B.ch  
 Acq On : 18 Nov 2020 14:44  
 Operator : DD\AJ  
 Sample : L4710-21  
 Misc :  
 ALS Vial : 23 Sample Multiplier: 1

**Instrument :**  
 ECD\_D  
**ClientSampled :**  
 C0AY5

**Manual Integrations**  
**APPROVED**  
 Ankita  
 11/19/2020 1:21:10 PM

Integration File signal 1: autoint1.e  
 Integration File signal 2: autoint2.e  
 Quant Time: Nov 19 06:06:27 2020  
 Quant Method : Z:\pestpcbsrv\HPCHEM1\ECD\_D\Method\PD110320CLP.M  
 Quant Title : GC Extractables  
 QLast Update : Wed Nov 04 04:05:33 2020  
 Response via : Initial Calibration  
 Integrator: ChemStation

Volume Inj. : 1 µl  
 Signal #1 Phase : ZB-MR2 Signal #2 Phase: ZB-MR1  
 Signal #1 Info : 30M x 0.32mm x0.2 Signal #2 Info : 30M x 0.32mm x 0.50µm



QEdit

(15) Endosulfan II (B)  
 0.000min 0.000 ng/ml  
 response 0

(15) Endosulfan II #2 (B)  
 6.950min 0.560 ng/ml  
 response 1583452

(+) = Expected Retention Time

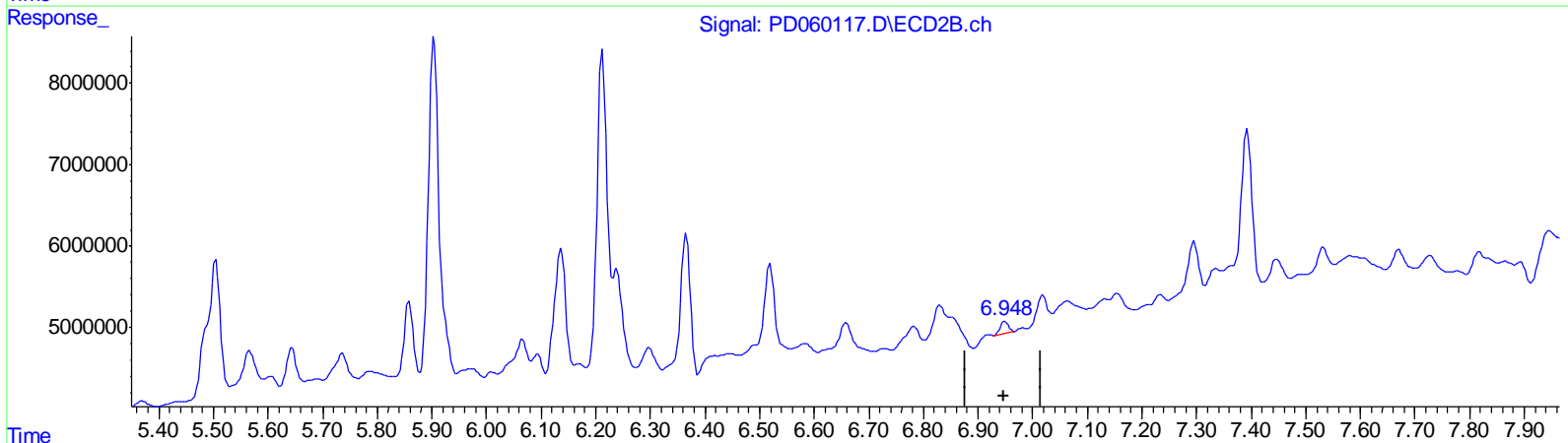
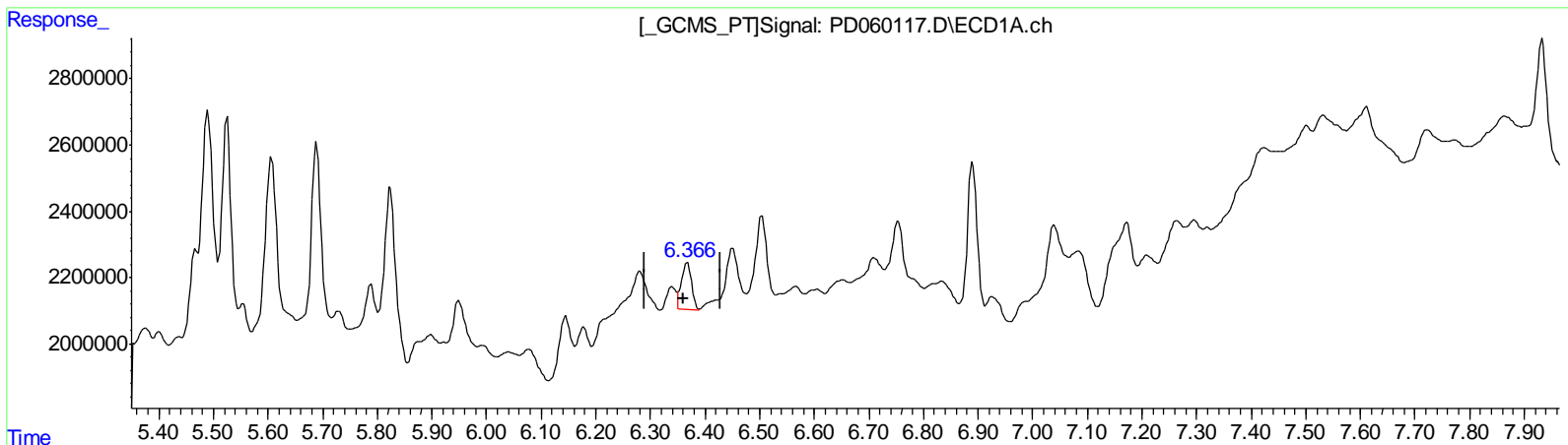
Data Path : Z:\pestpcbsrv\HPCHEM1\ECD\_D\Data\PD111820\  
 Data File : PD060117.D  
 Signal(s) : Signal #1: ECD1A.ch Signal #2: ECD2B.ch  
 Acq On : 18 Nov 2020 14:44  
 Operator : DD\AJ  
 Sample : L4710-21  
 Misc :  
 ALS Vial : 23 Sample Multiplier: 1

**Instrument :**  
 ECD\_D  
**ClientSampled :**  
 C0AY5

**Manual Integrations**  
**APPROVED**  
 Ankita  
 11/19/2020 1:21:10 PM

Integration File signal 1: autoint1.e  
 Integration File signal 2: autoint2.e  
 Quant Time: Nov 19 06:06:27 2020  
 Quant Method : Z:\pestpcbsrv\HPCHEM1\ECD\_D\Method\PD110320CLP.M  
 Quant Title : GC Extractables  
 QLast Update : Wed Nov 04 04:05:33 2020  
 Response via : Initial Calibration  
 Integrator: ChemStation

Volume Inj. : 1 µl  
 Signal #1 Phase : ZB-MR2 Signal #2 Phase: ZB-MR1  
 Signal #1 Info : 30M x 0.32mm x0.2 Signal #2 Info : 30M x 0.32mm x 0.50µm



QEdit

(15) Endosulfan II (B)  
 6.366min 1.964 ng/ml m  
 response 1771445

(15) Endosulfan II #2 (B)  
 6.950min 0.560 ng/ml  
 response 1583452

(+) = Expected Retention Time

Data Path : Z:\pestpcbsrv\HPCHEM1\ECD\_D\Data\PD111820\  
 Data File : PD060117.D  
 Signal(s) : Signal #1: ECD1A.ch Signal #2: ECD2B.ch  
 Acq On : 18 Nov 2020 14:44  
 Operator : DD\AJ  
 Sample : L4710-21  
 Misc :  
 ALS Vial : 23 Sample Multiplier: 1

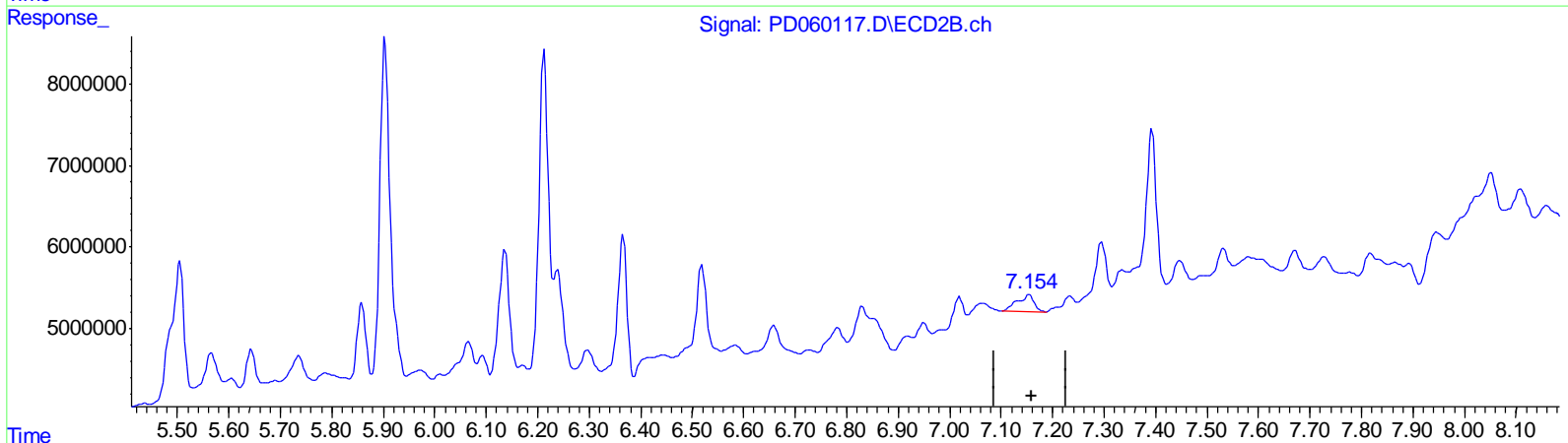
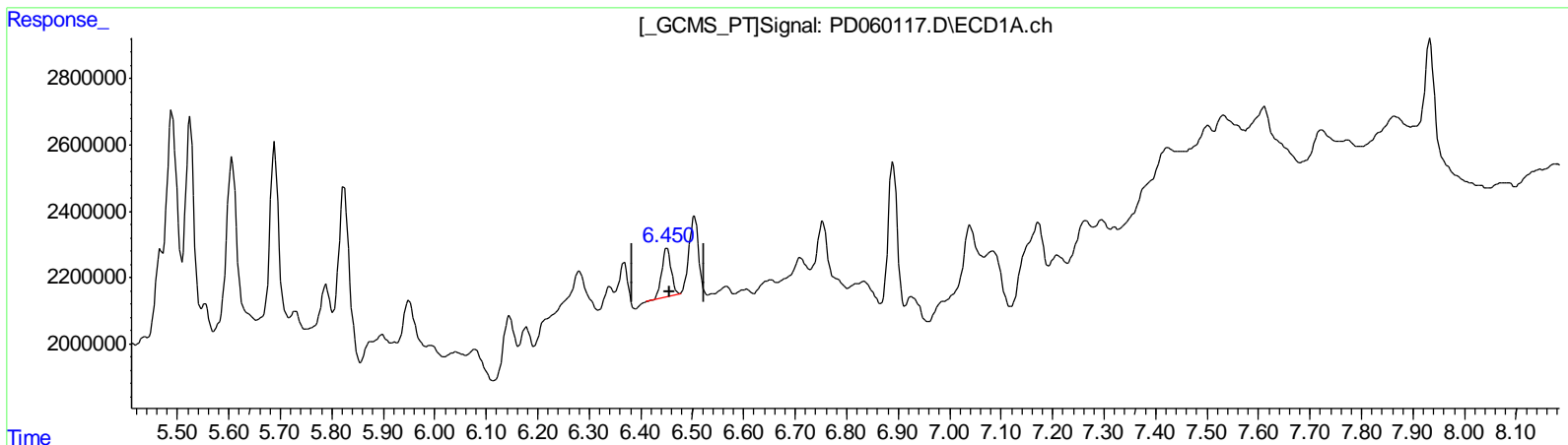
Instrument :  
 ECD\_D  
 ClientSampled :  
 C0AY5

Manual Integrations  
 APPROVED

Ankita  
 11/19/2020 1:21:10 PM

Integration File signal 1: autoint1.e  
 Integration File signal 2: autoint2.e  
 Quant Time: Nov 19 06:06:27 2020  
 Quant Method : Z:\pestpcbsrv\HPCHEM1\ECD\_D\Method\PD110320CLP.M  
 Quant Title : GC Extractables  
 QLast Update : Wed Nov 04 04:05:33 2020  
 Response via : Initial Calibration  
 Integrator: ChemStation

Volume Inj. : 1 µl  
 Signal #1 Phase : ZB-MR2 Signal #2 Phase: ZB-MR1  
 Signal #1 Info : 30M x 0.32mm x0.2 Signal #2 Info : 30M x 0.32mm x 0.50µm



QEdit

(17) 4,4'-DDT (MA)  
 6.451min 2.106 ng/ml  
 response 1892921

(17) 4,4'-DDT #2 (MA)  
 7.155min 1.666 ng/ml  
 response 4534742

(+) = Expected Retention Time

Data Path : Z:\pestpcbsrv\HPCHEM1\ECD\_D\Data\PD111820\  
 Data File : PD060117.D  
 Signal(s) : Signal #1: ECD1A.ch Signal #2: ECD2B.ch  
 Acq On : 18 Nov 2020 14:44  
 Operator : DD\AJ  
 Sample : L4710-21  
 Misc :  
 ALS Vial : 23 Sample Multiplier: 1

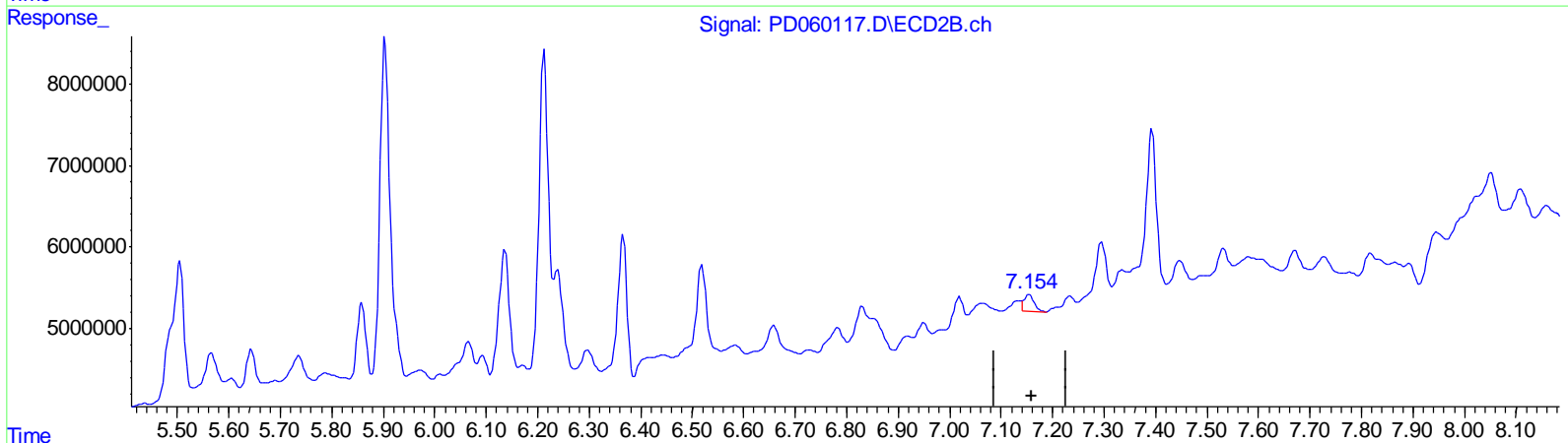
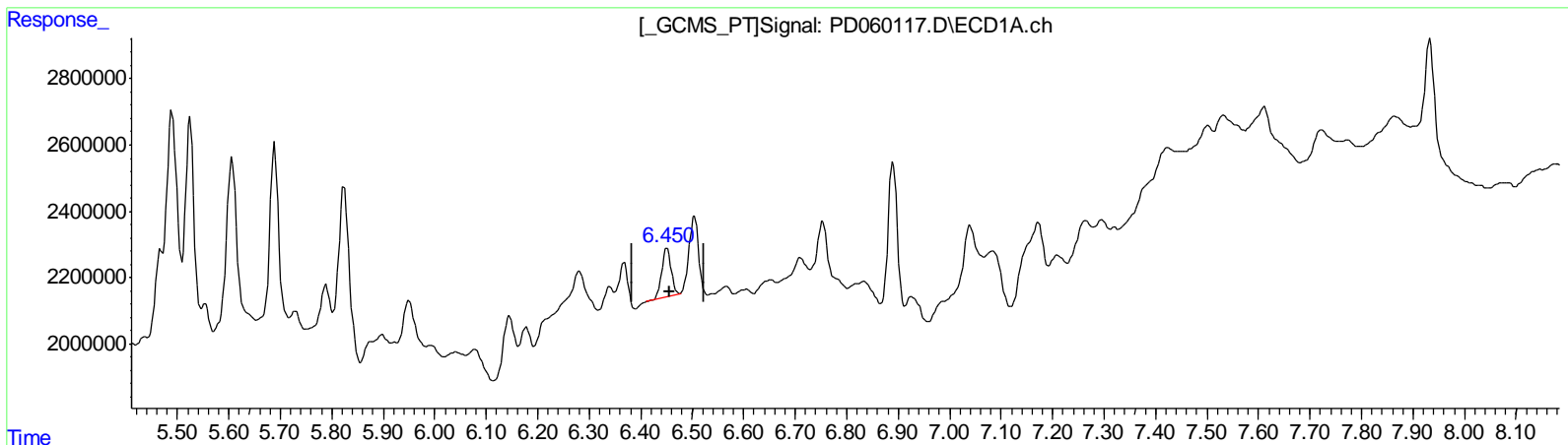
Instrument :  
 ECD\_D  
 ClientSampled :  
 C0AY5

Manual Integrations  
 APPROVED

Ankita  
 11/19/2020 1:21:10 PM

Integration File signal 1: autoint1.e  
 Integration File signal 2: autoint2.e  
 Quant Time: Nov 19 06:06:27 2020  
 Quant Method : Z:\pestpcbsrv\HPCHEM1\ECD\_D\Method\PD110320CLP.M  
 Quant Title : GC Extractables  
 QLast Update : Wed Nov 04 04:05:33 2020  
 Response via : Initial Calibration  
 Integrator: ChemStation

Volume Inj. : 1 µl  
 Signal #1 Phase : ZB-MR2 Signal #2 Phase: ZB-MR1  
 Signal #1 Info : 30M x 0.32mm x0.2 Signal #2 Info : 30M x 0.32mm x 0.50µm



QEdit

(17) 4,4'-DDT (MA)  
 6.451min 2.106 ng/ml  
 response 1892921

(17) 4,4'-DDT #2 (MA)  
 7.154min 1.051 ng/ml m  
 response 2860406

(+) = Expected Retention Time



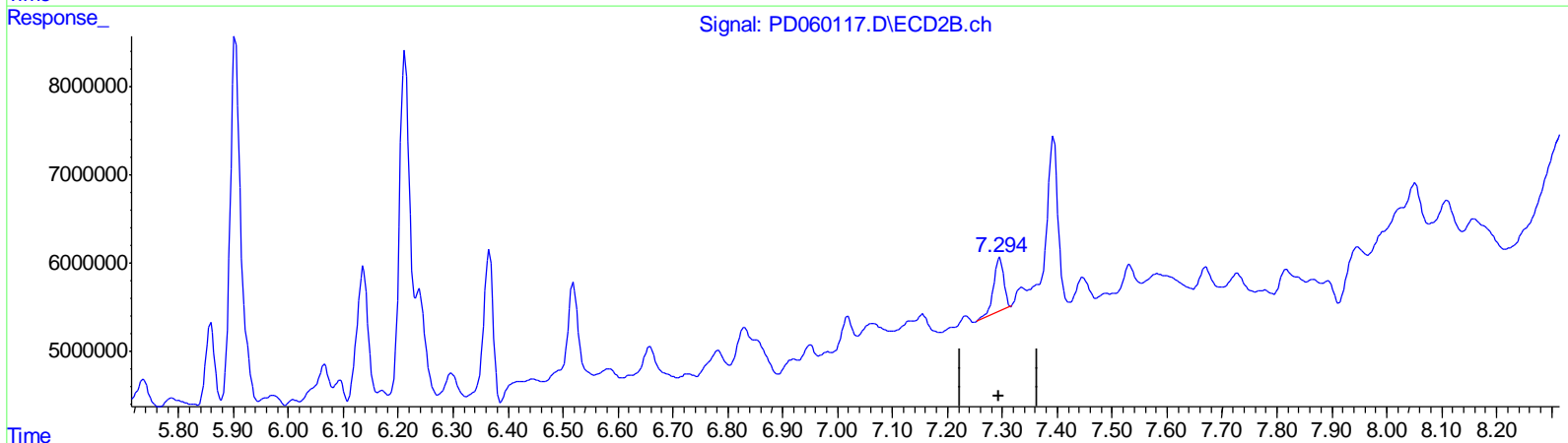
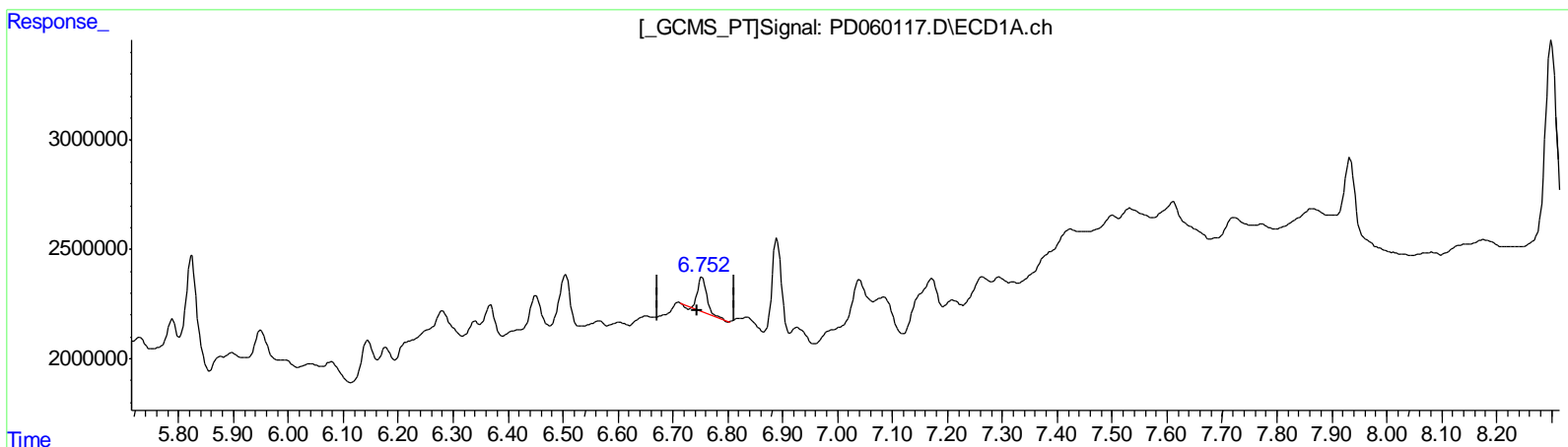
Data Path : Z:\pestpcbsrv\HPCHEM1\ECD\_D\Data\PD111820\  
 Data File : PD060117.D  
 Signal(s) : Signal #1: ECD1A.ch Signal #2: ECD2B.ch  
 Acq On : 18 Nov 2020 14:44  
 Operator : DD\AJ  
 Sample : L4710-21  
 Misc :  
 ALS Vial : 23 Sample Multiplier: 1

**Instrument :**  
 ECD\_D  
**ClientSampled :**  
 C0AY5

**Manual Integrations**  
**APPROVED**  
 Ankita  
 11/19/2020 1:21:10 PM

Integration File signal 1: autoint1.e  
 Integration File signal 2: autoint2.e  
 Quant Time: Nov 19 06:06:27 2020  
 Quant Method : Z:\pestpcbsrv\HPCHEM1\ECD\_D\Method\PD110320CLP.M  
 Quant Title : GC Extractables  
 QLast Update : Wed Nov 04 04:05:33 2020  
 Response via : Initial Calibration  
 Integrator: ChemStation

Volume Inj. : 1 µl  
 Signal #1 Phase : ZB-MR2 Signal #2 Phase: ZB-MR1  
 Signal #1 Info : 30M x 0.32mm x0.2 Signal #2 Info : 30M x 0.32mm x 0.50µm



QEdit

(19) Endosulfan Sulfate (B)  
 6.754min 2.167 ng/ml  
 response 1893432

(19) Endosulfan Sulfate #2 (B)  
 7.295min 2.765 ng/ml  
 response 7971632

(+) = Expected Retention Time

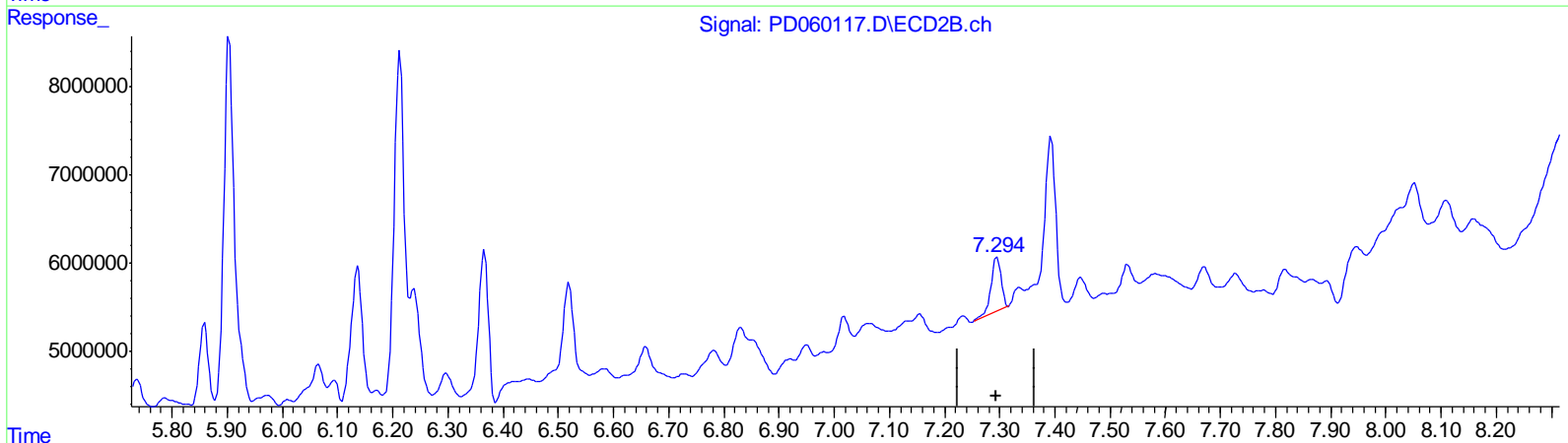
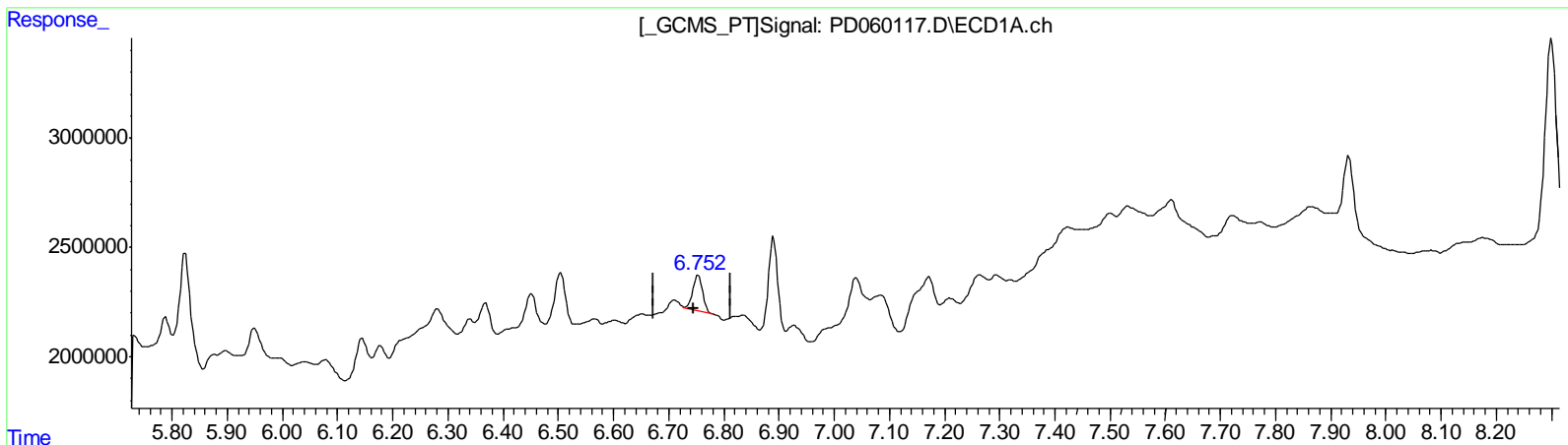
Data Path : Z:\pestpcbsrv\HPCHEM1\ECD\_D\Data\PD111820\  
 Data File : PD060117.D  
 Signal(s) : Signal #1: ECD1A.ch Signal #2: ECD2B.ch  
 Acq On : 18 Nov 2020 14:44  
 Operator : DD\AJ  
 Sample : L4710-21  
 Misc :  
 ALS Vial : 23 Sample Multiplier: 1

**Instrument :**  
 ECD\_D  
**ClientSampled :**  
 C0AY5

**Manual Integrations**  
**APPROVED**  
 Ankita  
 11/19/2020 1:21:10 PM

Integration File signal 1: autoint1.e  
 Integration File signal 2: autoint2.e  
 Quant Time: Nov 19 06:06:27 2020  
 Quant Method : Z:\pestpcbsrv\HPCHEM1\ECD\_D\Method\PD110320CLP.M  
 Quant Title : GC Extractables  
 QLast Update : Wed Nov 04 04:05:33 2020  
 Response via : Initial Calibration  
 Integrator: ChemStation

Volume Inj. : 1 µl  
 Signal #1 Phase : ZB-MR2 Signal #2 Phase: ZB-MR1  
 Signal #1 Info : 30M x 0.32mm x0.2 Signal #2 Info : 30M x 0.32mm x 0.50µm



QEdit

(19) Endosulfan Sulfate (B)  
 6.752min 2.209 ng/ml m  
 response 1930327

(19) Endosulfan Sulfate #2 (B)  
 7.295min 2.765 ng/ml  
 response 7971632

(+) = Expected Retention Time

Data Path : Z:\pestpcbsrv\HPCHEM1\ECD\_D\Data\PD111820\  
 Data File : PD060117.D  
 Signal(s) : Signal #1: ECD1A.ch Signal #2: ECD2B.ch  
 Acq On : 18 Nov 2020 14:44  
 Operator : DD\AJ  
 Sample : L4710-21  
 Misc :  
 ALS Vial : 23 Sample Multiplier: 1

Instrument :  
 ECD\_D  
 ClientSampled :  
 C0AY5

Manual Integrations  
**APPROVED**  
 Ankita  
 11/19/2020 1:21:10 PM

Integration File signal 1: autoint1.e  
 Integration File signal 2: autoint2.e  
 Quant Time: Nov 19 06:06:27 2020  
 Quant Method : Z:\pestpcbsrv\HPCHEM1\ECD\_D\Method\PD110320CLP.M  
 Quant Title : GC Extractables  
 QLast Update : Wed Nov 04 04:05:33 2020  
 Response via : Initial Calibration  
 Integrator: ChemStation

Volume Inj. : 1 µl  
 Signal #1 Phase : ZB-MR2 Signal #2 Phase: ZB-MR1  
 Signal #1 Info : 30M x 0.32mm x0.2 Signal #2 Info : 30M x 0.32mm x 0.50µm

Compound	RT#1	RT#2	Resp#1	Resp#2	ng/ml	ng/ml
-----						
System Monitoring Compounds						
1) SA Tetrachlo...	3.504	4.023	10001964	39120211	11.671	13.124
27) SA Decachlor...	8.300	9.104	12120119	34808714	14.587	14.150m
Target Compounds						
8) B Heptachlo...	5.237	5.904	16973226	59294476	16.068	18.002
10) B trans-Chl...	5.468	6.135	2778293	20529766	2.616	5.975m#
11) B cis-Chlor...	5.525	6.213	8445515	50998617	7.984	14.854 #
12) B 4,4'-DDE	5.689	6.366	7378856	19993105	7.220	6.183
13) MA Dieldrin	5.824	6.519	5564684	14845799	5.107	4.252
15) B Endosulfa...	6.366	6.950	1771445	1583452	1.964m	0.560 #
17) MA 4,4'-DDT	6.451	7.154	1892921	2860406	2.106	1.051m#
19) B Endosulfa...	6.752	7.295	1930327	7971632	2.209m	2.765 #
-----						

AJ  
 11/27/20

(f)=RT Delta > 1/2 Window (#)=Amounts differ by > 25% (m)=manual int.