

Data Path : Z:\pestpcbsrv\HPCHEM1\ECD\_D\Data\PD111822\  
 Data File : PD073104.D  
 Signal(s) : Signal #1: ECD1A.ch Signal #2: ECD2B.ch  
 Acq On : 17 Nov 2022 23:50  
 Operator : AR\AJ  
 Sample : INDB379  
 Misc :  
 ALS Vial : 5 Sample Multiplier: 1

Instrument :  
 ECD\_D  
 ClientSampleId :

Integration File signal 1: autoint1.e  
 Integration File signal 2: autoint2.e  
 Quant Time: Nov 18 05:24:12 2022  
 Quant Method : Z:\pestpcbsrv\HPCHEM1\ECD\_D\Method\PD111722CLP.M  
 Quant Title : GC Extractables  
 QLast Update : Thu Nov 17 06:19:59 2022  
 Response via : Initial Calibration  
 Integrator: ChemStation

Volume Inj. : 1 µl  
 Signal #1 Phase : ZB-MR2 Signal #2 Phase: ZB-MR1  
 Signal #1 Info : 30M x 0.32mm x0.2 Signal #2 Info : 30M x 0.32mm x 0.50µm

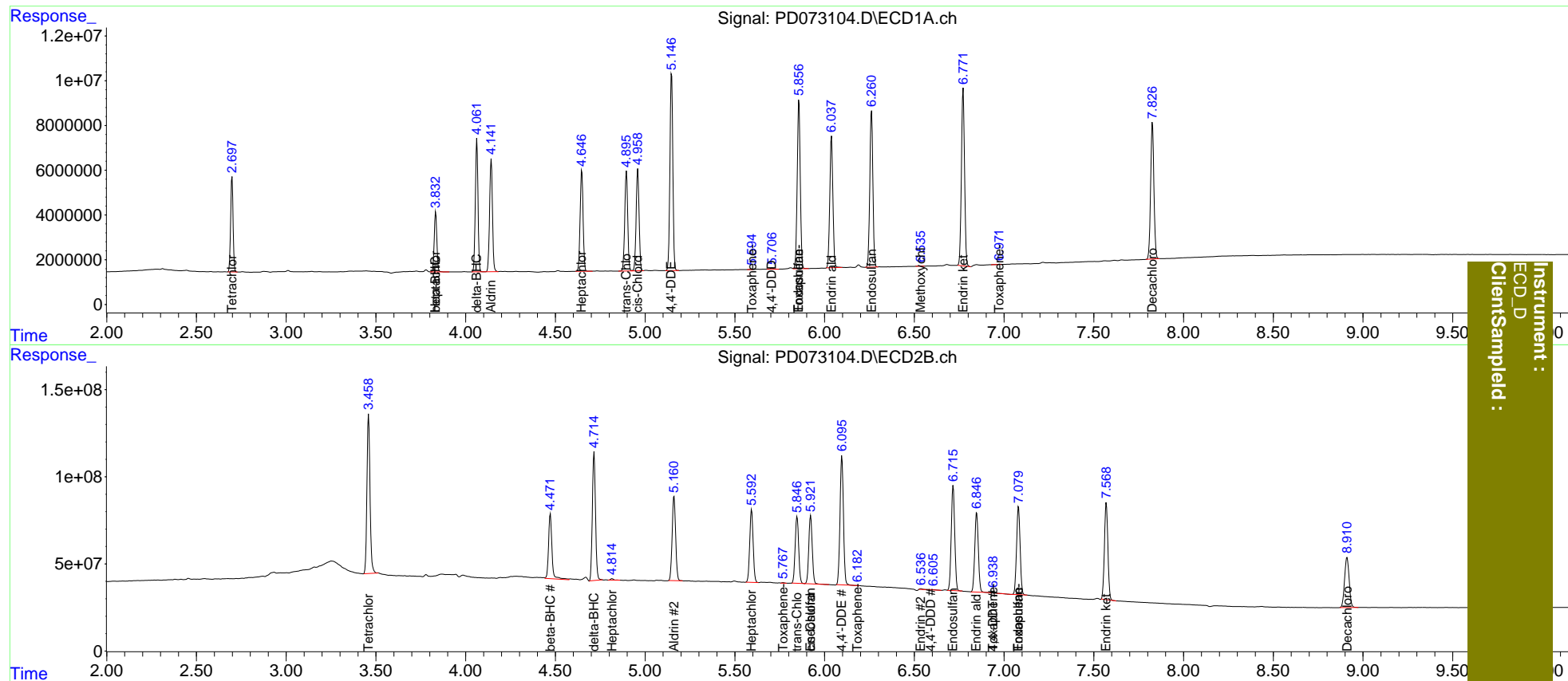
Compound	RT#1	RT#2	Resp#1	Resp#2	ng/ml	ng/ml
System Monitoring Compounds						
1) SA Tetrachlo...	2.698	3.459	40165030	1085.7E6	16.750	16.621
27) SA Decachlor...	7.827	8.911	77236381	511.0E6	33.848	34.533
Target Compounds						
2) A alpha-BHC	0.000	3.914	0	5829178	N.D.	<MDL
3) MA gamma-BHC...	3.490f	4.255	82267	4638592	<MDL	<MDL #
4) MA Heptachlor	3.833f	4.816	27397420	8972194	8.201	0.195 #
5) MB Aldrin	4.143	5.161	55773337	650.4E6	16.551	16.196
6) B beta-BHC	3.833	4.472	27397420	491.9E6	17.064	18.409
7) B delta-BHC	4.063	4.716	60176092	898.8E6	16.557	16.519
8) B Heptachlo...	4.647	5.594	51675257	555.2E6	16.631	16.426
9) A Endosulfan I	5.006	5.923f	241805	523.0E6	<MDL	17.978 #
10) B trans-Chl...	4.896	5.847	50765643	519.6E6	16.471	16.448
11) B cis-Chlor...	4.959	5.923	51727107	523.0E6	16.520	16.473
12) B 4,4'-DDE	5.148	6.097	98879256	983.3E6	33.052	32.751
14) MA Endrin	5.556	6.537f	76895	5584263	<MDL	0.226 #
15) B Endosulfa...	5.857	6.717	88929988	809.9E6	33.023	33.526
16) A 4,4'-DDD	5.707	6.593	553886	2845028	0.230	0.124 #
17) MA 4,4'-DDT	5.987	6.939	-2084	14934728	N.D.	0.695
18) B Endrin al...	6.039	6.848	70717618	632.2E6	32.742	33.369
19) B Endosulfa...	6.262	7.081	83011016	698.6E6	33.084	33.593
20) A Methoxychlor	6.537	7.479f	138754	-370031	0.111	N.D. #
21) B Endrin ke...	6.772	7.570	96163707	743.1E6	32.943	33.282
22) Toxaphene-1	0.000	5.769	0	3056475	N.D.	26.011
23) Toxaphene-2	5.594	6.183f	56224	217718	3.596	1.016 #
24) Toxaphene-3	5.857	6.939	88929988	14934728	4137.323	29.748 #
25) Toxaphene-4	0.000	7.081	0	698.6E6	N.D.	1564.342
26) Toxaphene-5	6.974	7.479	102526	-370031	2.159	N.D. #

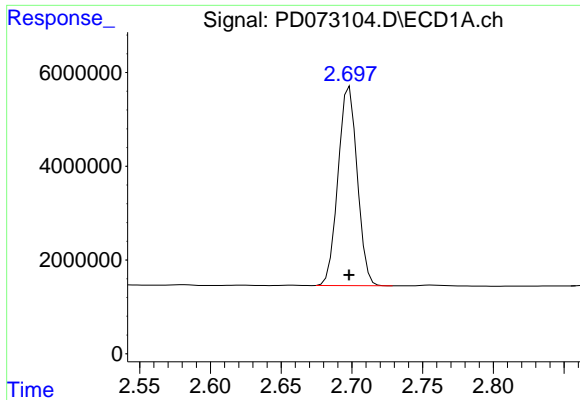
(f)=RT Delta > 1/2 Window (#)=Amounts differ by > 25% (m)=manual int.

Data Path : Z:\pestpcbsrv\HPCHEM1\ECD\_D\Data\PD111822\  
 Data File : PD073104.D  
 Signal(s) : Signal #1: ECD1A.ch Signal #2: ECD2B.ch  
 Acq On : 17 Nov 2022 23:50  
 Operator : AR\AJ  
 Sample : INDB379  
 Misc :  
 ALS Vial : 5 Sample Multiplier: 1

Integration File signal 1: autoint1.e  
 Integration File signal 2: autoint2.e  
 Quant Time: Nov 18 05:24:12 2022  
 Quant Method : Z:\pestpcbsrv\HPCHEM1\ECD\_D\Method\PD111722CLP.M  
 Quant Title : GC Extractables  
 QLast Update : Thu Nov 17 06:19:59 2022  
 Response via : Initial Calibration  
 Integrator: ChemStation

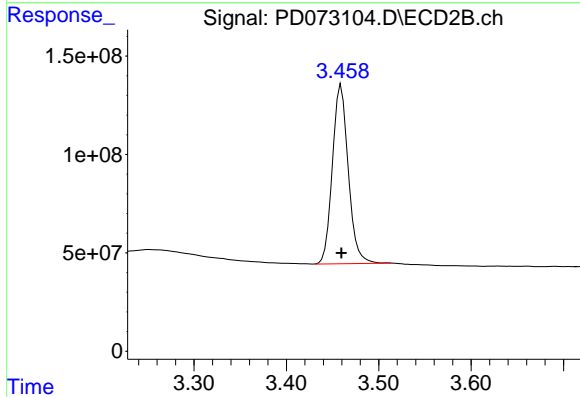
Volume Inj. : 1 µl  
 Signal #1 Phase : ZB-MR2 Signal #2 Phase: ZB-MR1  
 Signal #1 Info : 30M x 0.32mm x0.2 Signal #2 Info : 30M x 0.32mm x 0.50µm



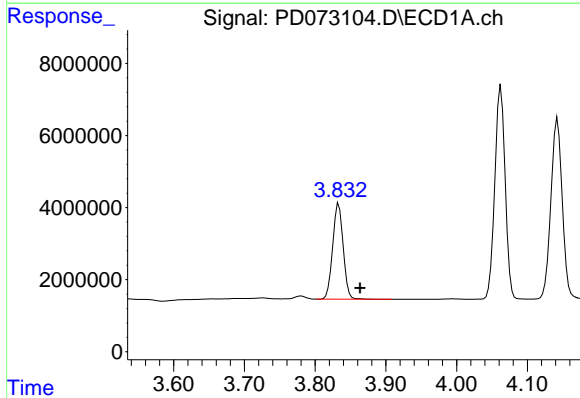


#1 Tetrachloro-m-xylene  
 R.T.: 2.698 min  
 Delta R.T.: 0.000 min  
 Response: 40165030  
 Conc: 16.75 ng/ml

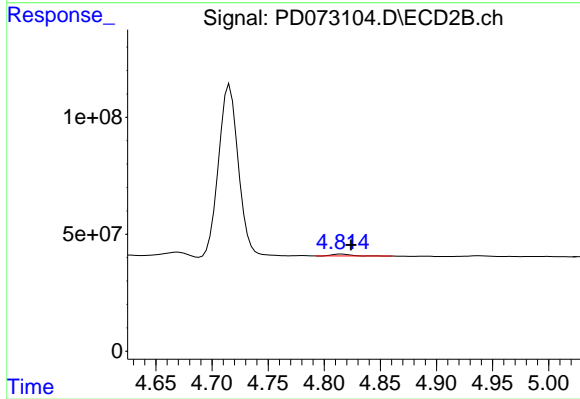
Instrument :  
 ECD\_D  
 ClientSampleId :



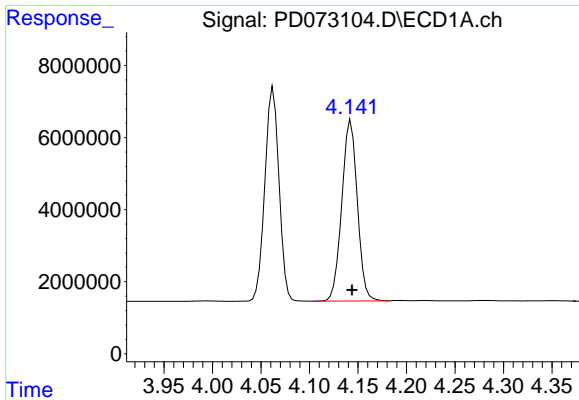
#1 Tetrachloro-m-xylene  
 R.T.: 3.459 min  
 Delta R.T.: 0.000 min  
 Response: 1085745732  
 Conc: 16.62 ng/ml



#4 Heptachlor  
 R.T.: 3.833 min  
 Delta R.T.: -0.030 min  
 Response: 27397420  
 Conc: 8.20 ng/ml

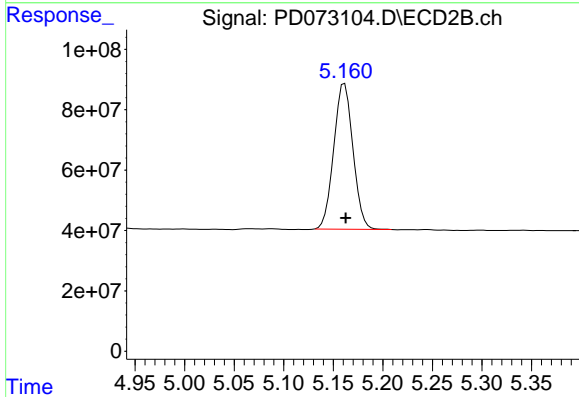


#4 Heptachlor  
 R.T.: 4.816 min  
 Delta R.T.: -0.008 min  
 Response: 8972194  
 Conc: 0.20 ng/ml

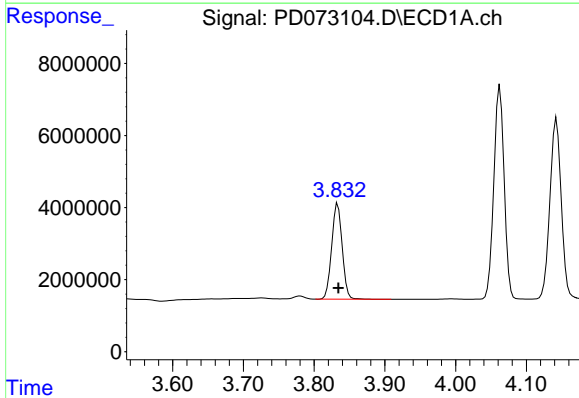


#5 Aldrin  
 R.T.: 4.143 min  
 Delta R.T.: 0.000 min  
 Response: 55773337  
 Conc: 16.55 ng/ml

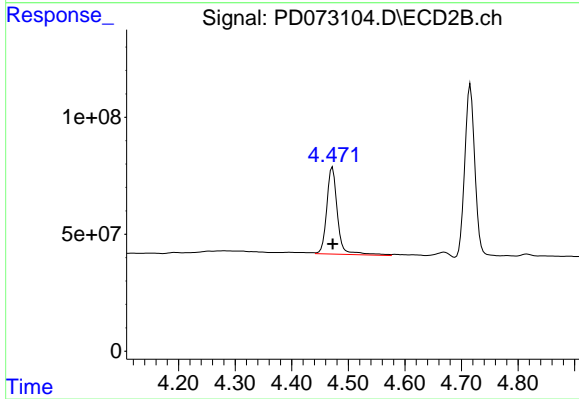
Instrument :  
 ECD\_D  
 ClientSampleId :



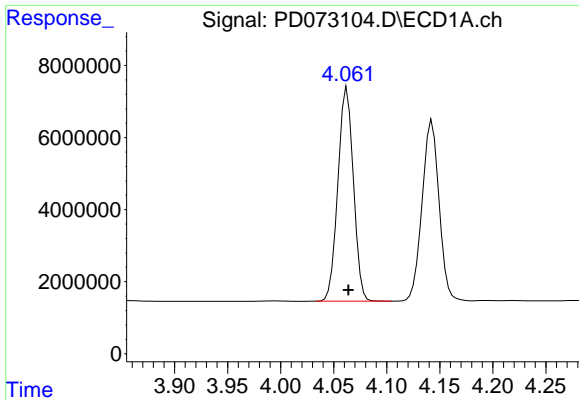
#5 Aldrin  
 R.T.: 5.161 min  
 Delta R.T.: -0.001 min  
 Response: 650446184  
 Conc: 16.20 ng/ml



#6 beta-BHC  
 R.T.: 3.833 min  
 Delta R.T.: 0.000 min  
 Response: 27397420  
 Conc: 17.06 ng/ml



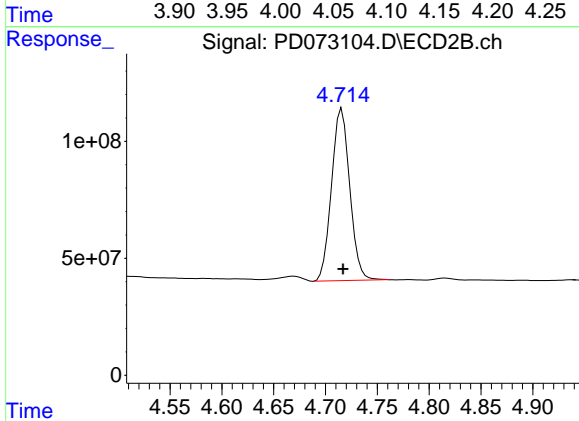
#6 beta-BHC  
 R.T.: 4.472 min  
 Delta R.T.: 0.000 min  
 Response: 491878698  
 Conc: 18.41 ng/ml



#7 delta-BHC

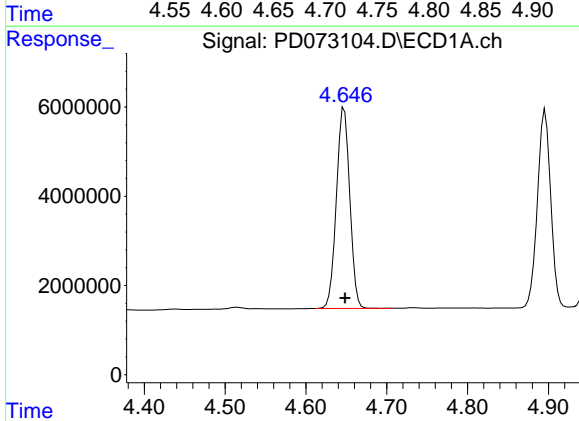
R.T.: 4.063 min  
Delta R.T.: -0.001 min  
Response: 60176092  
Conc: 16.56 ng/ml

Instrument :  
ECD\_D  
ClientSampleId :



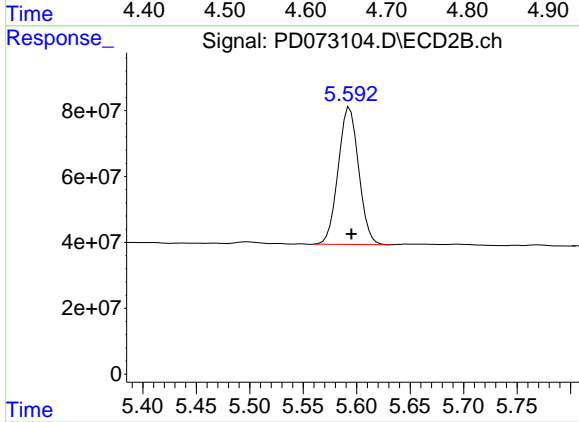
#7 delta-BHC

R.T.: 4.716 min  
Delta R.T.: -0.001 min  
Response: 898815316  
Conc: 16.52 ng/ml



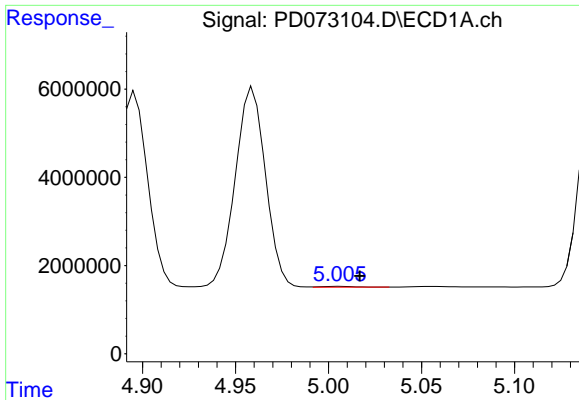
#8 Heptachlor epoxide

R.T.: 4.647 min  
Delta R.T.: -0.001 min  
Response: 51675257  
Conc: 16.63 ng/ml



#8 Heptachlor epoxide

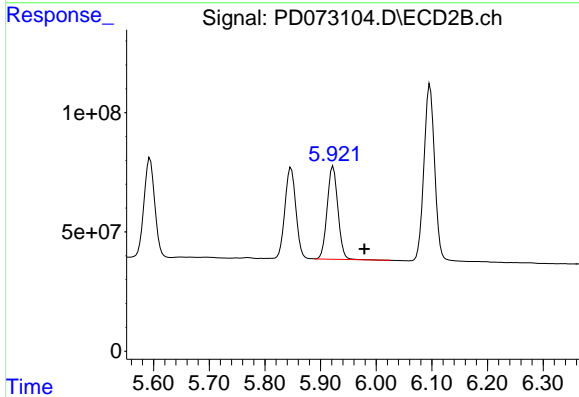
R.T.: 5.594 min  
Delta R.T.: -0.001 min  
Response: 555249257  
Conc: 16.43 ng/ml



#9 Endosulfan I

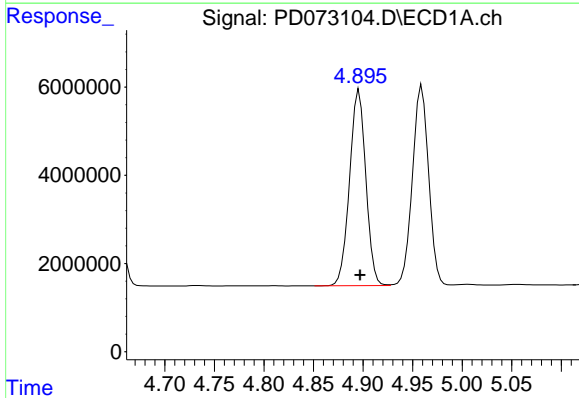
R.T.: 5.006 min  
 Delta R.T.: -0.011 min  
 Response: 241805  
 Conc: N.D.

Instrument :  
 ECD\_D  
 ClientSampleId :



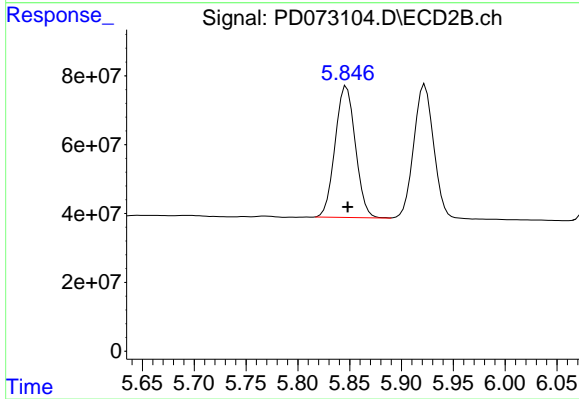
#9 Endosulfan I

R.T.: 5.923 min  
 Delta R.T.: -0.056 min  
 Response: 522951076  
 Conc: 17.98 ng/ml



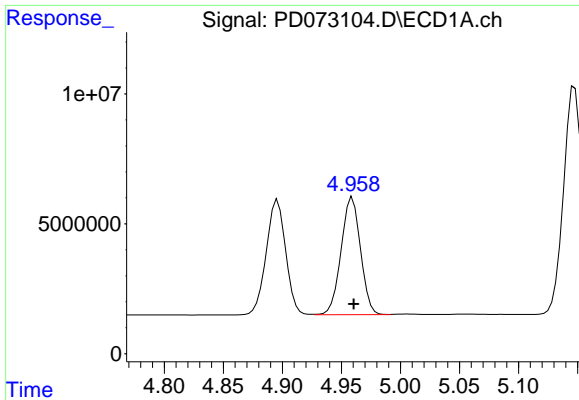
#10 trans-Chlordane

R.T.: 4.896 min  
 Delta R.T.: 0.000 min  
 Response: 50765643  
 Conc: 16.47 ng/ml



#10 trans-Chlordane

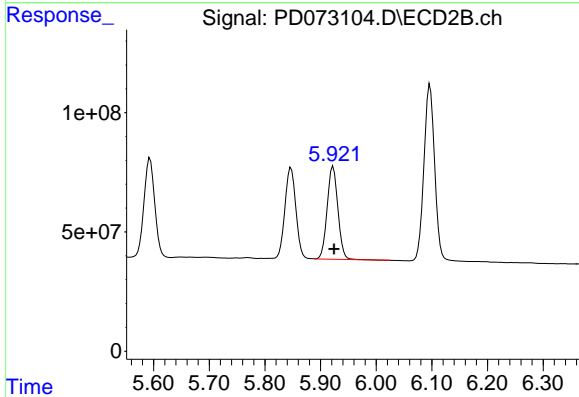
R.T.: 5.847 min  
 Delta R.T.: -0.001 min  
 Response: 519615034  
 Conc: 16.45 ng/ml



#11 cis-Chlordane

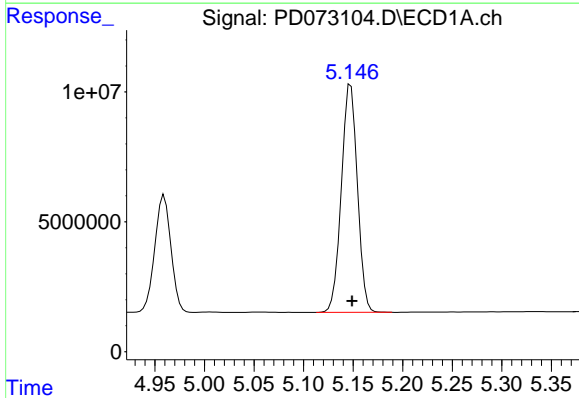
R.T.: 4.959 min  
 Delta R.T.: -0.001 min  
 Response: 51727107  
 Conc: 16.52 ng/ml

Instrument :  
 ECD\_D  
 ClientSampleId :



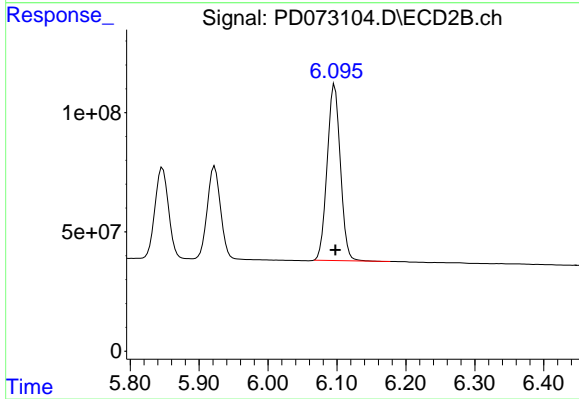
#11 cis-Chlordane

R.T.: 5.923 min  
 Delta R.T.: -0.002 min  
 Response: 522951076  
 Conc: 16.47 ng/ml



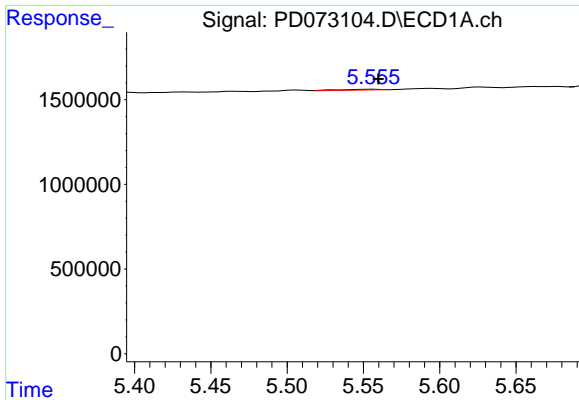
#12 4,4'-DDE

R.T.: 5.148 min  
 Delta R.T.: -0.001 min  
 Response: 98879256  
 Conc: 33.05 ng/ml



#12 4,4'-DDE

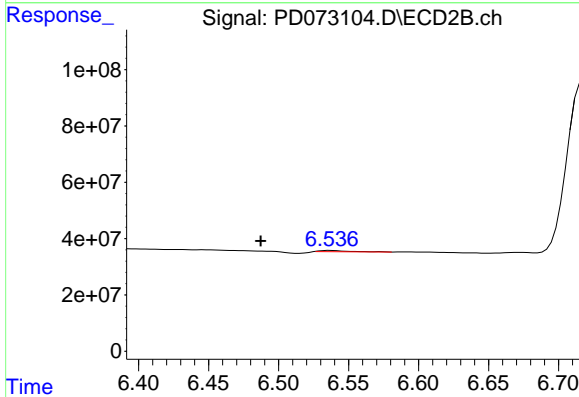
R.T.: 6.097 min  
 Delta R.T.: -0.001 min  
 Response: 983283715  
 Conc: 32.75 ng/ml



#14 Endrin

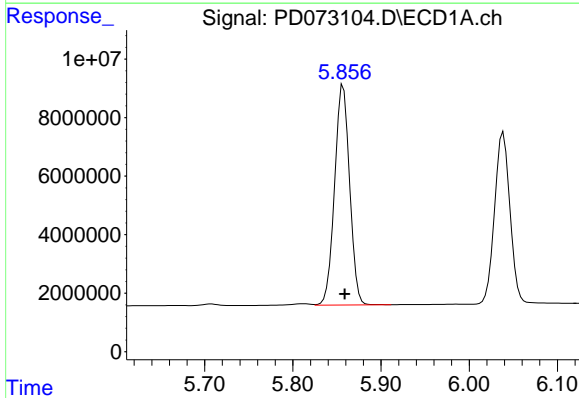
R.T.: 5.556 min  
 Delta R.T.: -0.004 min  
 Response: 76895  
 Conc: N.D.

Instrument :  
 ECD\_D  
 ClientSampleId :



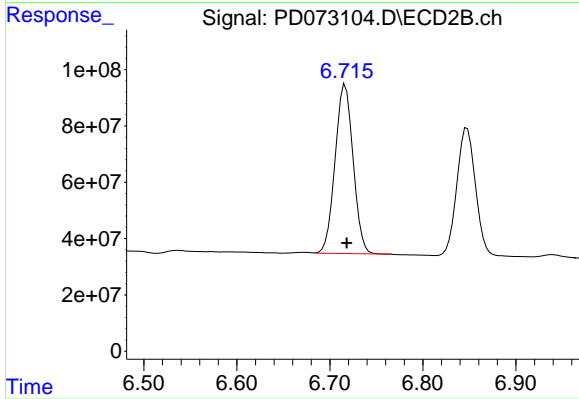
#14 Endrin

R.T.: 6.537 min  
 Delta R.T.: 0.050 min  
 Response: 5584263  
 Conc: 0.23 ng/ml



#15 Endosulfan II

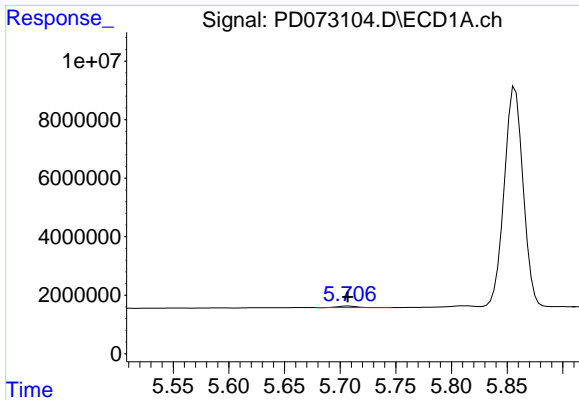
R.T.: 5.857 min  
 Delta R.T.: -0.002 min  
 Response: 88929988  
 Conc: 33.02 ng/ml



#15 Endosulfan II

R.T.: 6.717 min  
 Delta R.T.: -0.001 min  
 Response: 809906377  
 Conc: 33.53 ng/ml

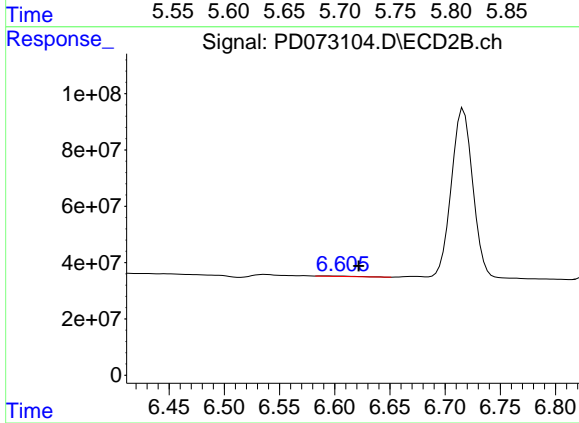




#16 4,4'-DDD

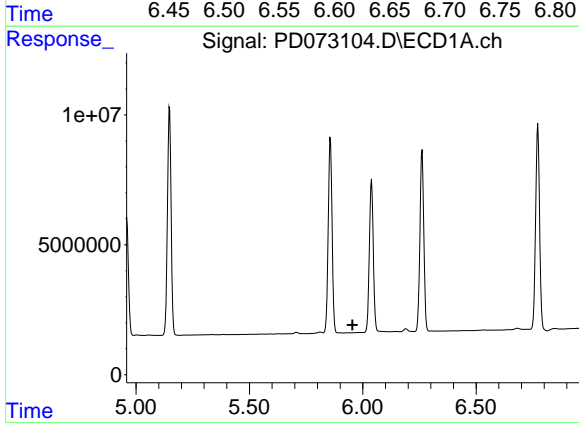
R.T.: 5.707 min  
 Delta R.T.: 0.000 min  
 Response: 553886  
 Conc: 0.23 ng/ml

Instrument :  
 ECD\_D  
 ClientSampleId :



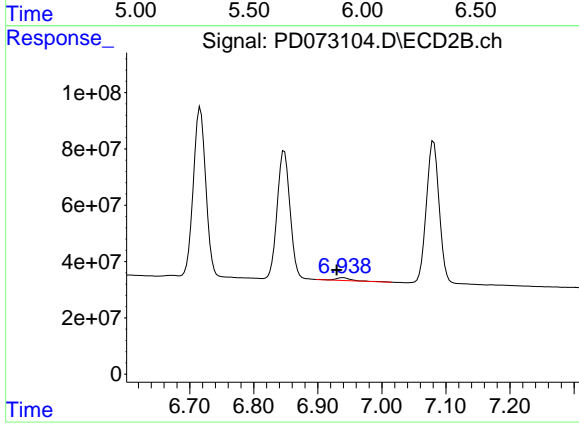
#16 4,4'-DDD

R.T.: 6.593 min  
 Delta R.T.: -0.029 min  
 Response: 2845028  
 Conc: 0.12 ng/ml



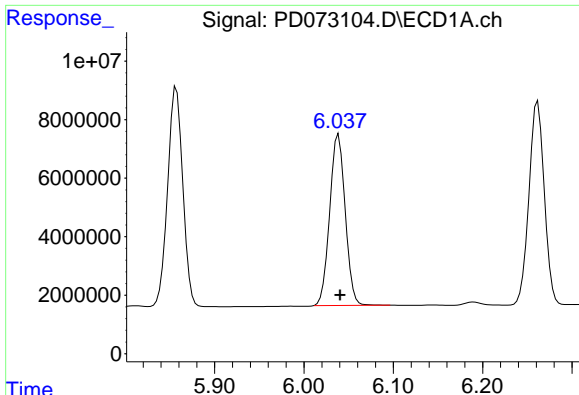
#17 4,4'-DDT

R.T.: 5.987 min  
 Delta R.T.: 0.032 min  
 Response: -2084  
 Conc: N.D.



#17 4,4'-DDT

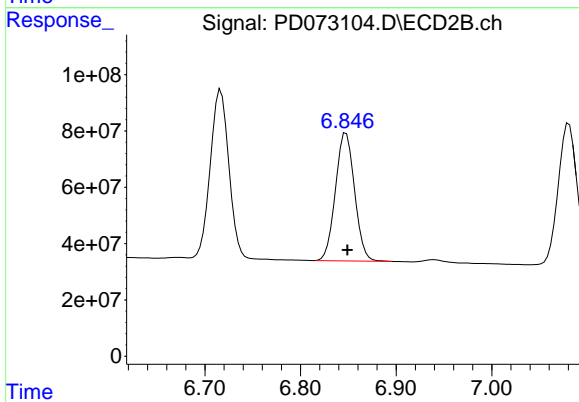
R.T.: 6.939 min  
 Delta R.T.: 0.010 min  
 Response: 14934728  
 Conc: 0.70 ng/ml



#18 Endrin aldehyde

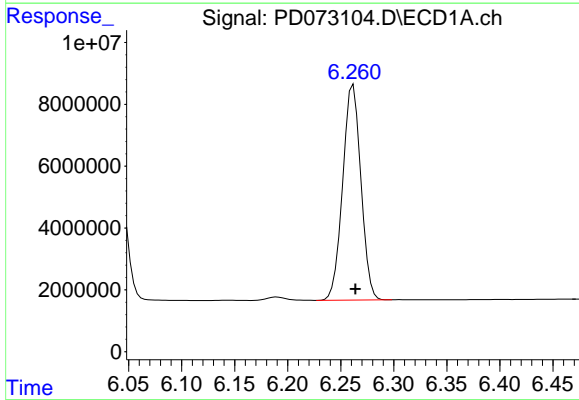
R.T.: 6.039 min  
 Delta R.T.: -0.002 min  
 Response: 70717618  
 Conc: 32.74 ng/ml

Instrument :  
 ECD\_D  
 ClientSampleId :



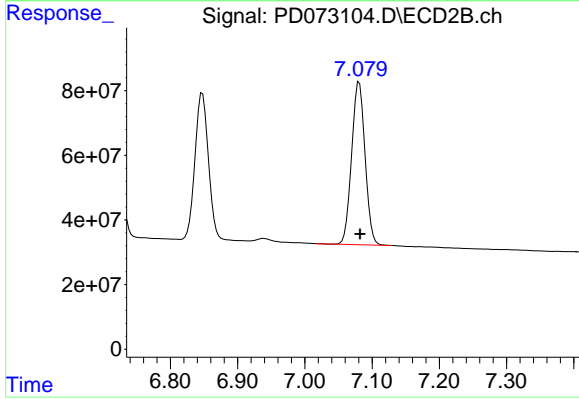
#18 Endrin aldehyde

R.T.: 6.848 min  
 Delta R.T.: -0.001 min  
 Response: 632155744  
 Conc: 33.37 ng/ml



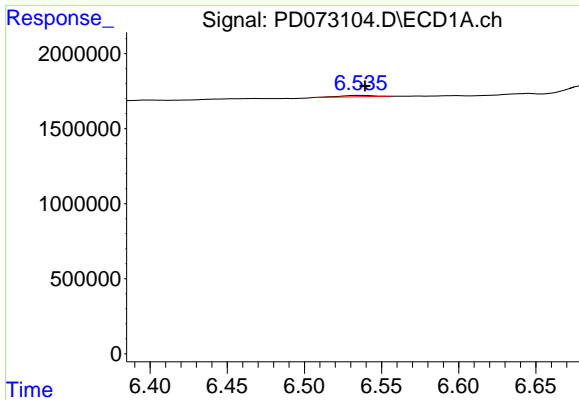
#19 Endosulfan Sulfate

R.T.: 6.262 min  
 Delta R.T.: -0.002 min  
 Response: 83011016  
 Conc: 33.08 ng/ml



#19 Endosulfan Sulfate

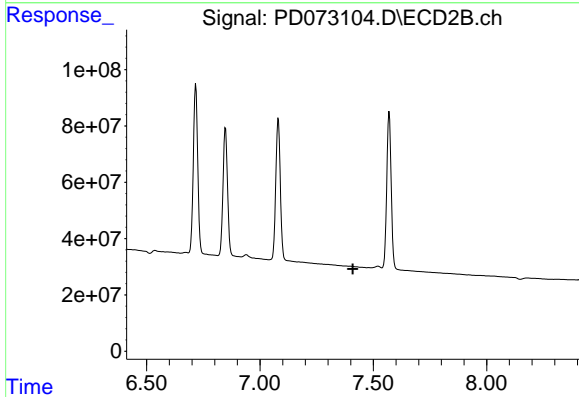
R.T.: 7.081 min  
 Delta R.T.: -0.001 min  
 Response: 698564841  
 Conc: 33.59 ng/ml



#20 Methoxychlor

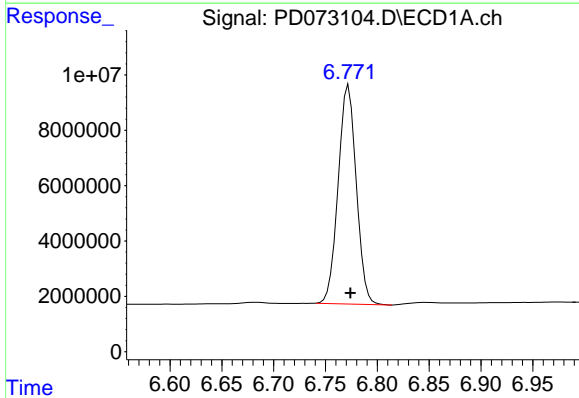
R.T.: 6.537 min  
 Delta R.T.: -0.003 min  
 Response: 138754  
 Conc: 0.11 ng/ml

Instrument :  
 ECD\_D  
 ClientSampleId :



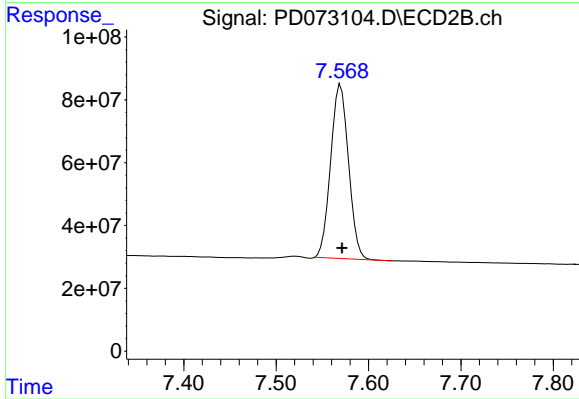
#20 Methoxychlor

R.T.: 7.479 min  
 Delta R.T.: 0.070 min  
 Response: -370031  
 Conc: N.D.



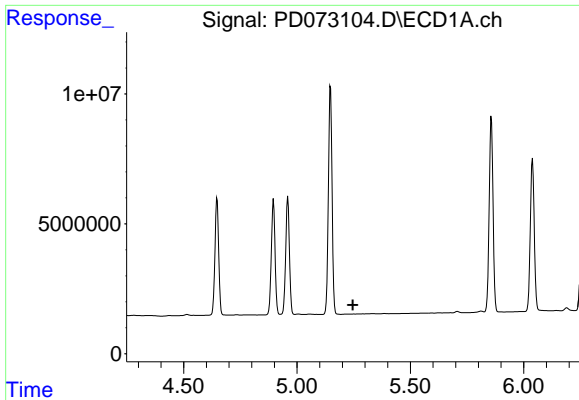
#21 Endrin ketone

R.T.: 6.772 min  
 Delta R.T.: -0.002 min  
 Response: 96163707  
 Conc: 32.94 ng/ml



#21 Endrin ketone

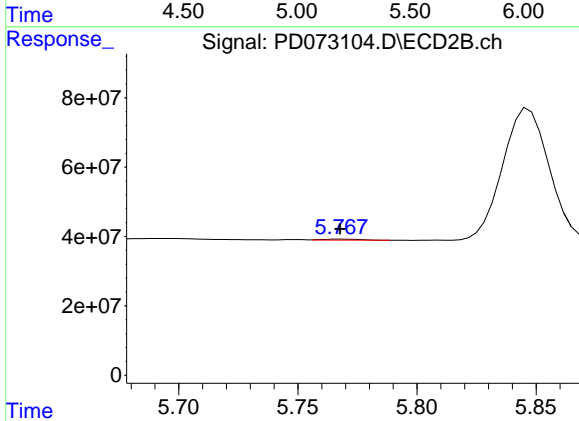
R.T.: 7.570 min  
 Delta R.T.: -0.001 min  
 Response: 743101129  
 Conc: 33.28 ng/ml



#22 Toxaphene-1

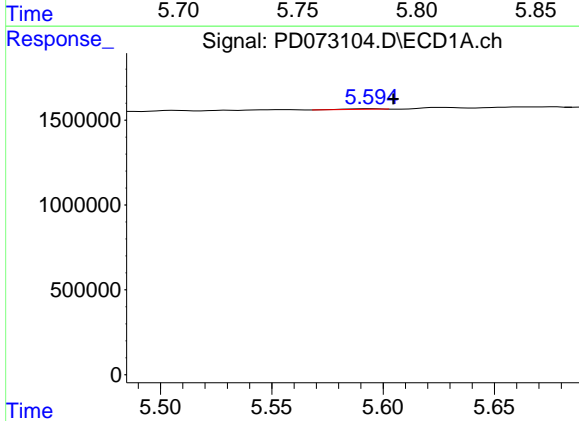
R.T.: 0.000 min  
 Exp R.T.: 5.246 min  
 Response: 0  
 Conc: N.D.

Instrument :  
 ECD\_D  
 ClientSampleId :



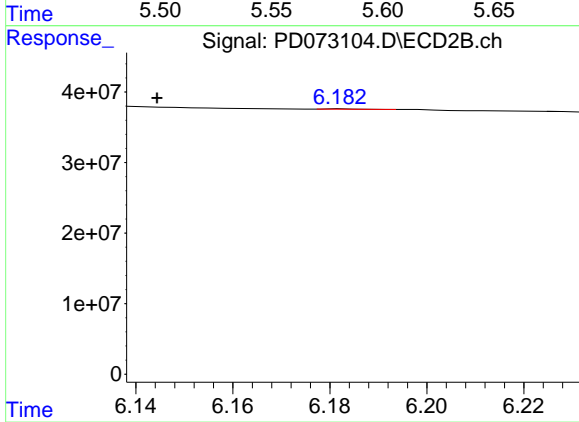
#22 Toxaphene-1

R.T.: 5.769 min  
 Delta R.T.: 0.000 min  
 Response: 3056475  
 Conc: 26.01 ng/ml



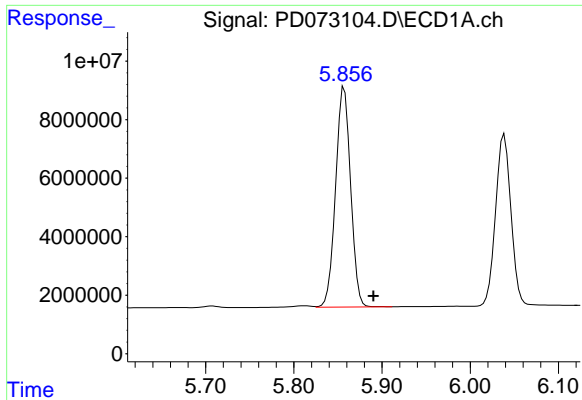
#23 Toxaphene-2

R.T.: 5.594 min  
 Delta R.T.: -0.010 min  
 Response: 56224  
 Conc: 3.60 ng/ml



#23 Toxaphene-2

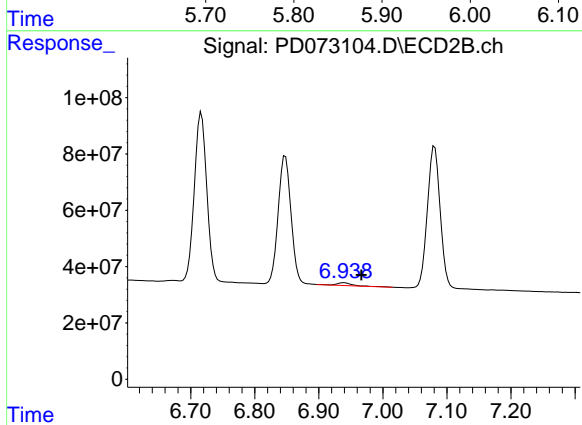
R.T.: 6.183 min  
 Delta R.T.: 0.039 min  
 Response: 217718  
 Conc: 1.02 ng/ml



#24 Toxaphene-3

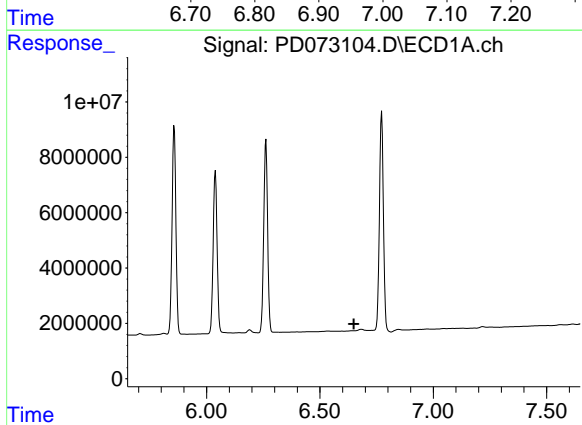
R.T.: 5.857 min  
 Delta R.T.: -0.033 min  
 Response: 88929988  
 Conc: 4137.32 ng/ml

Instrument :  
 ECD\_D  
 ClientSampleId :



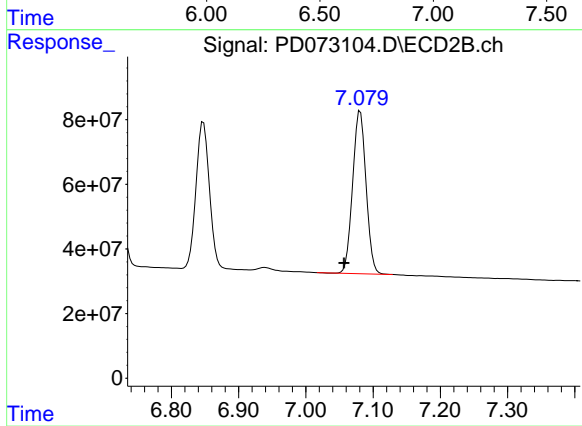
#24 Toxaphene-3

R.T.: 6.939 min  
 Delta R.T.: -0.027 min  
 Response: 14934728  
 Conc: 29.75 ng/ml



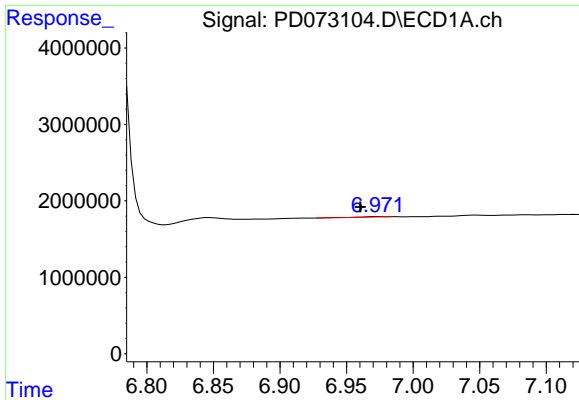
#25 Toxaphene-4

R.T.: 0.000 min  
 Exp R.T. : 6.649 min  
 Response: 0  
 Conc: N.D.



#25 Toxaphene-4

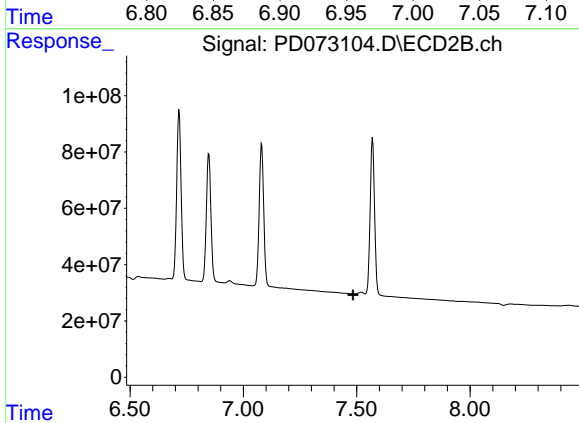
R.T.: 7.081 min  
 Delta R.T.: 0.024 min  
 Response: 698564841  
 Conc: 1564.34 ng/ml



#26 Toxaphene-5

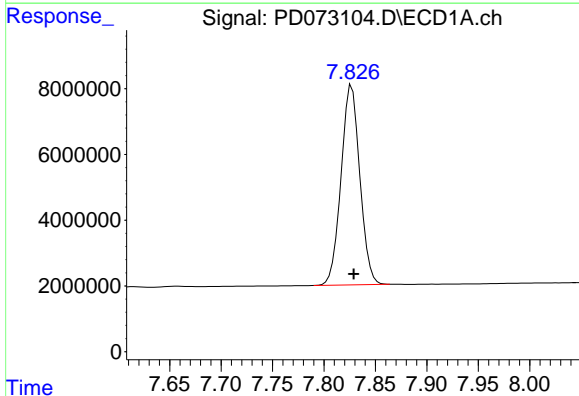
R.T.: 6.974 min  
 Delta R.T.: 0.014 min  
 Response: 102526  
 Conc: 2.16 ng/ml

Instrument :  
 ECD\_D  
 ClientSampleId :



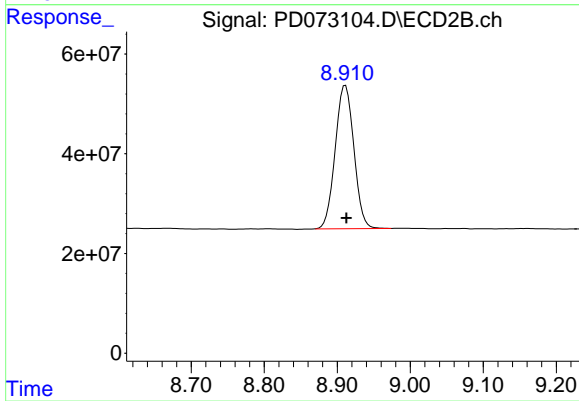
#26 Toxaphene-5

R.T.: 7.479 min  
 Delta R.T.: -0.006 min  
 Response: -370031  
 Conc: N.D.



#27 Decachlorobiphenyl

R.T.: 7.827 min  
 Delta R.T.: -0.002 min  
 Response: 77236381  
 Conc: 33.85 ng/ml



#27 Decachlorobiphenyl

R.T.: 8.911 min  
 Delta R.T.: -0.001 min  
 Response: 511037926  
 Conc: 34.53 ng/ml