

Data Path : Z:\pestpcbsrv\HPCHEM1\ECD_D\Data\PD111825\
 Data File : PD091247.D
 Signal(s) : Signal #1: ECD1A.ch Signal #2: ECD2B.ch
 Acq On : 18 Nov 2025 08:51
 Operator : AR\AJ
 Sample : PEM
 Misc :
 ALS Vial : 3 Sample Multiplier: 1

Instrument :
 ECD_D
 ClientSampleId :

Integration File signal 1: autoint1.e
 Integration File signal 2: autoint2.e
 Quant Time: Nov 18 22:13:23 2025
 Quant Method : Z:\pestpcbsrv\HPCHEM1\ECD_D\Method\PD111525.M
 Quant Title : GC Extractables
 QLast Update : Sat Nov 15 04:46:13 2025
 Response via : Initial Calibration
 Integrator: ChemStation

Volume Inj. : 1 µl
 Signal #1 Phase : ZB-MR2 Signal #2 Phase: ZB-MR2
 Signal #1 Info : 30M x 0.32mm x0.5 Signal #2 Info : 30M x 0.32mm x 0.25µm

	Compound	RT#1	RT#2	Resp#1	Resp#2	ng/ml	ng/ml

System Monitoring Compounds							
1)	SA Tetrachlo...	3.541	2.871	61179039	678.4E6	17.740	18.520
28)	SA Decachlor...	9.060	8.055	82439336	692.1E6	16.548	17.487
Target Compounds							
2)	A alpha-BHC	3.990	3.382	59078924	568.5E6	7.389	8.994
3)	MA gamma-BHC...	4.321	3.718	57171381	528.2E6	7.651	9.136
4)	MA Heptachlor	4.941f	4.081	3347700	1751860	0.467	0.032 #
5)	MB Aldrin	5.252	4.358	200571	8724944	0.028	0.155 #
6)	B beta-BHC	4.508	4.014	24856728	223.7E6	8.555	9.311
7)	B delta-BHC	4.767	4.255	6102283	630823	0.821	0.011 #
8)	Heptachlo...	5.671	4.858	7864690	12079059	1.211	0.237 #
9)	A Endosulfan I	6.067	5.210f	330485	21310738	0.054	0.445 #
10)	B gamma-Chl...	5.905f	5.112	1905900	108.6E6	0.293	1.989 #
11)	B alpha-Chl...	5.991f	5.174	4936966	16299036	0.717	0.311 #
12)	B 4,4'-DDE	6.187	5.360	412785	20783533	0.071	0.389 #
13)	MA Dieldrin	6.358f	5.501	1773474	1795852	0.274	0.033 #
14)	MA Endrin	6.564	5.775	215.5E6	2110.1E6	43.412	46.691
15)	B Endosulfa...	6.761f	6.070	17137330	4567698	3.083	0.098 #
16)	A 4,4'-DDD	6.696	5.915	9992583	82784853	2.035	1.694
17)	MA 4,4'-DDT	7.012	6.169	365.5E6	3741.9E6	88.379	95.621
18)	B Endrin al...	6.908	6.243	2783787	27497108	0.668	0.779
19)	B Endosulfa...	0.000	6.470	0	846924	N.D.	0.019 #
20)	A Methoxychlor	7.484	6.739	441.2E6	3863.2E6	202.903	192.665
21)	B Endrin ke...	7.621	6.976	4633315	51404481	0.822	1.009
22)	Mirex	0.000	7.162	0	9917360	N.D.	0.299 #
23)	Chlordane-1	0.000	3.882	0	1406250	N.D.	0.817 #
24)	Chlordane-2	5.252	4.475	200571	27185322	0.812	15.525 #
25)	Chlordane-3	0.000	5.112	0	108.6E6	N.D.	18.883 #
26)	Chlordane-4	0.000	5.174	0	16299036	N.D.	3.407 #
27)	Chlordane-5	6.860	6.070	1307993	4567698	6.620	2.251 #

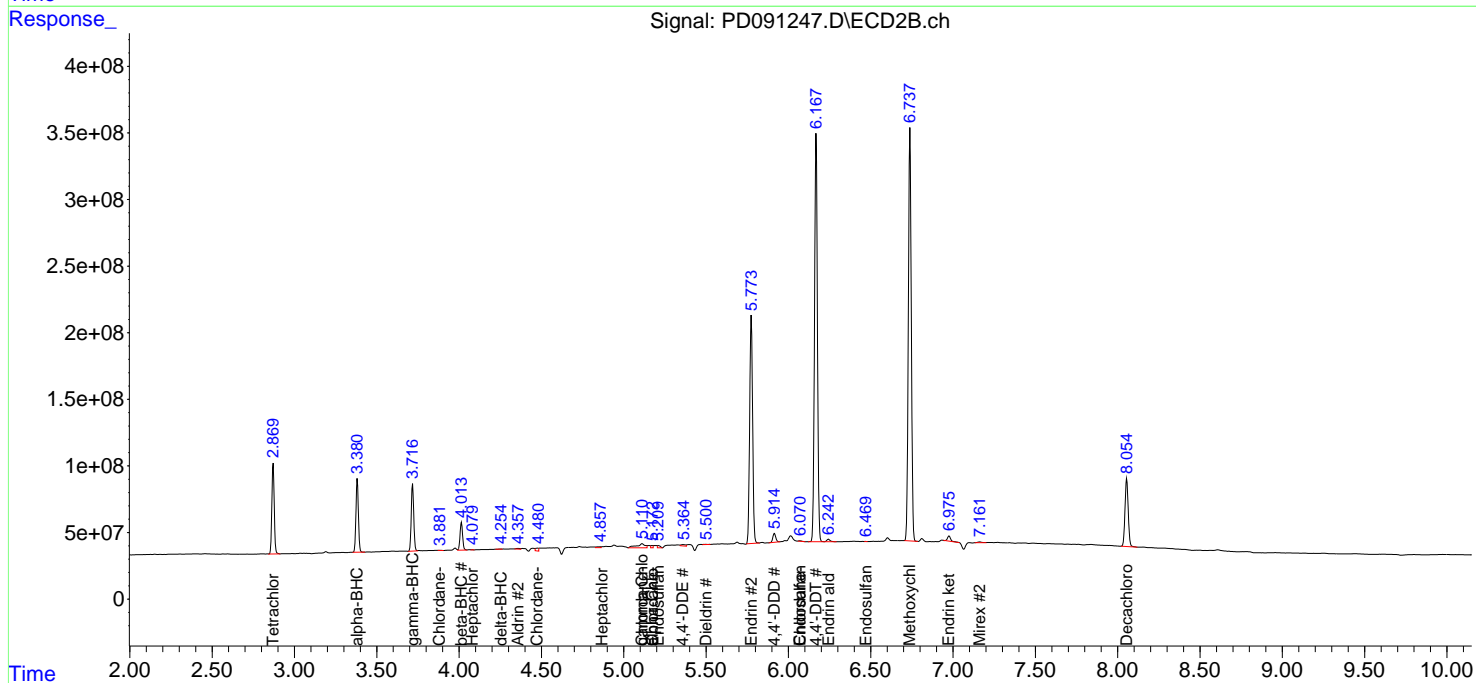
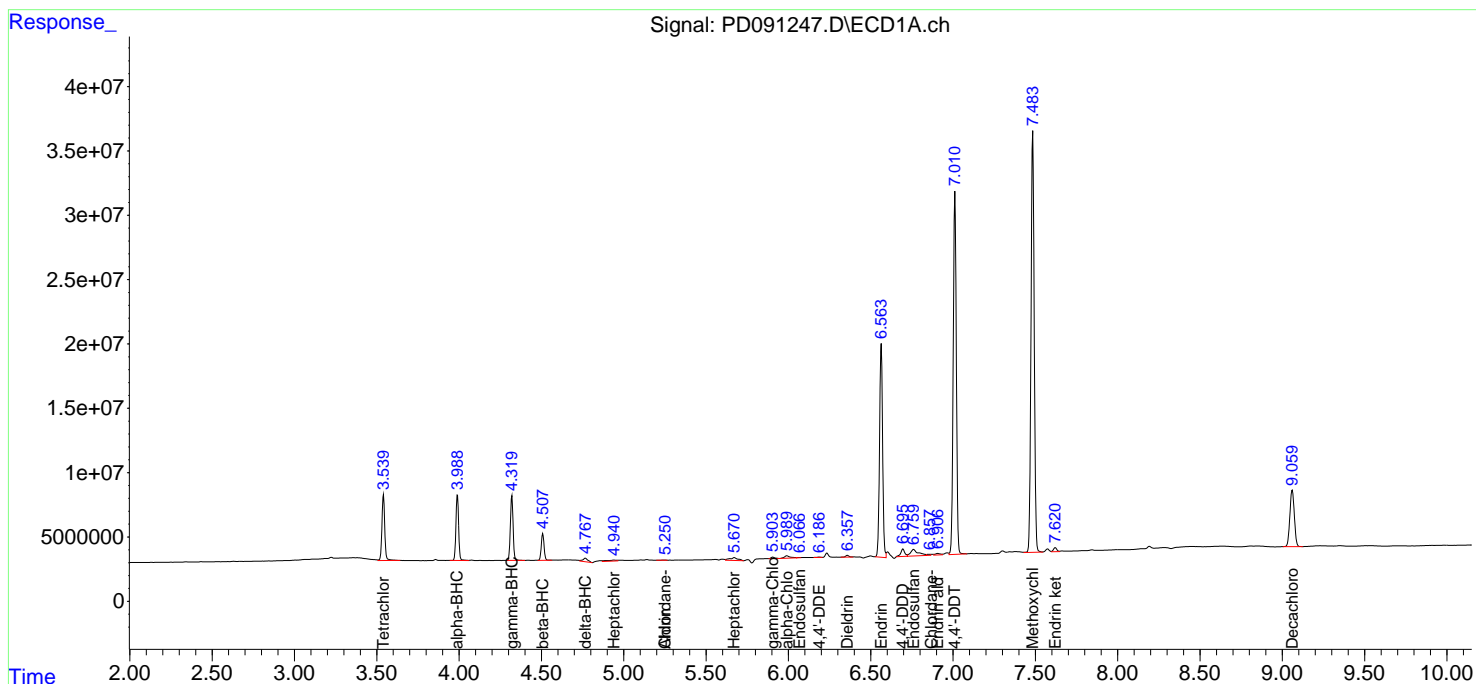
(f)=RT Delta > 1/2 Window (#)=Amounts differ by > 25% (m)=manual int.

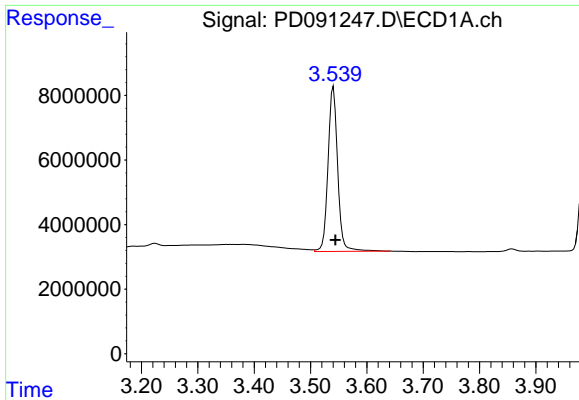
Data Path : Z:\pestpcbsrv\HPCHEM1\ECD_D\Data\PD111825\
 Data File : PD091247.D
 Signal(s) : Signal #1: ECD1A.ch Signal #2: ECD2B.ch
 Acq On : 18 Nov 2025 08:51
 Operator : AR\AJ
 Sample : PEM
 Misc :
 ALS Vial : 3 Sample Multiplier: 1

Instrument :
 ECD_D
 ClientSampleId :

Integration File signal 1: autoint1.e
 Integration File signal 2: autoint2.e
 Quant Time: Nov 18 22:13:23 2025
 Quant Method : Z:\pestpcbsrv\HPCHEM1\ECD_D\Method\PD111525.M
 Quant Title : GC Extractables
 QLast Update : Sat Nov 15 04:46:13 2025
 Response via : Initial Calibration
 Integrator: ChemStation

Volume Inj. : 1 µl
 Signal #1 Phase : ZB-MR1 Signal #2 Phase: ZB-MR2
 Signal #1 Info : 30M x 0.32mm x0.5 Signal #2 Info : 30M x 0.32mm x 0.25µm

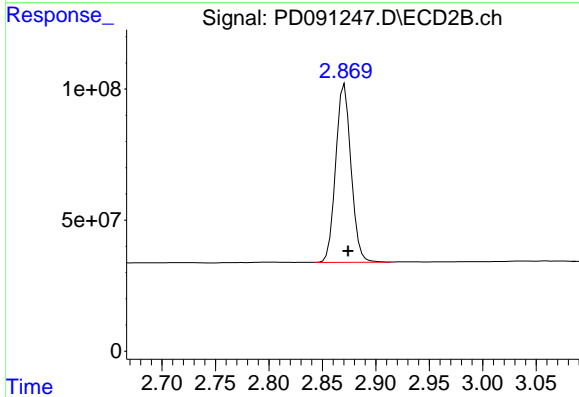




#1 Tetrachloro-m-xylene

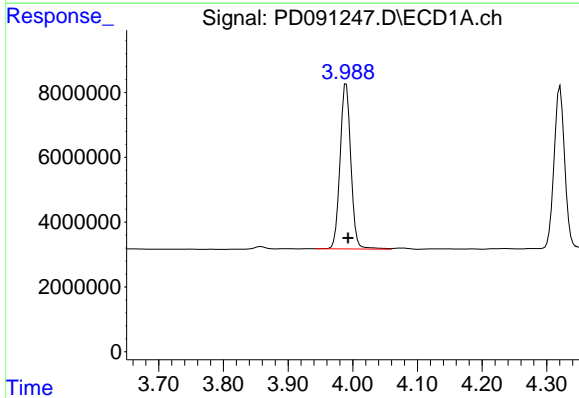
R.T.: 3.541 min
 Delta R.T.: -0.003 min
 Response: 61179039
 Conc: 17.74 ng/ml

Instrument :
 ECD_D
 ClientSampleId :



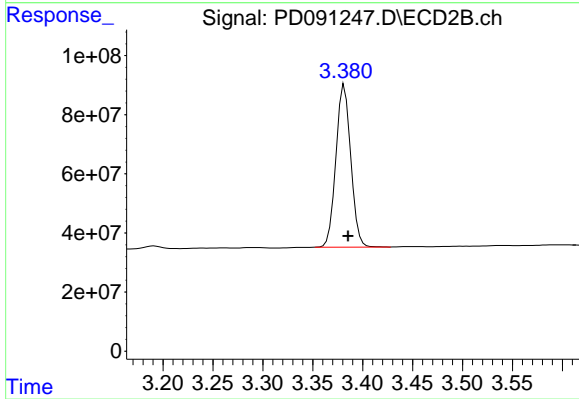
#1 Tetrachloro-m-xylene

R.T.: 2.871 min
 Delta R.T.: -0.003 min
 Response: 678377590
 Conc: 18.52 ng/ml



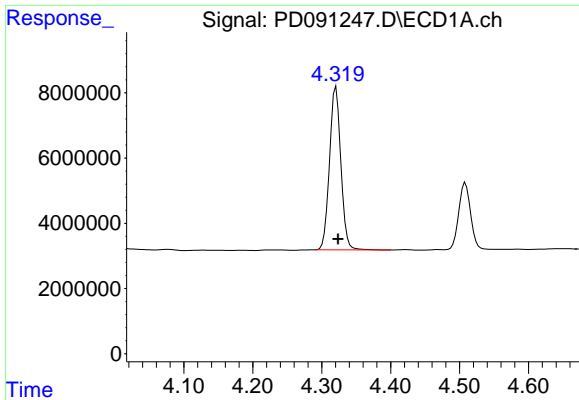
#2 alpha-BHC

R.T.: 3.990 min
 Delta R.T.: -0.003 min
 Response: 59078924
 Conc: 7.39 ng/ml



#2 alpha-BHC

R.T.: 3.382 min
 Delta R.T.: -0.003 min
 Response: 568475137
 Conc: 8.99 ng/ml



#3 gamma-BHC (Lindane)

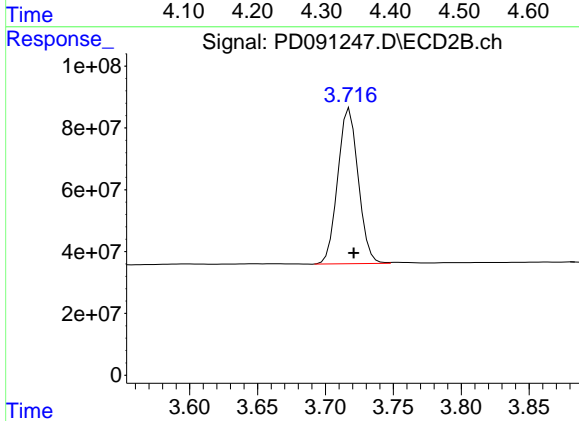
R.T.: 4.321 min

Delta R.T.: -0.003 min

Response: 57171381

Conc: 7.65 ng/ml

Instrument :
ECD_D
ClientSampleId :



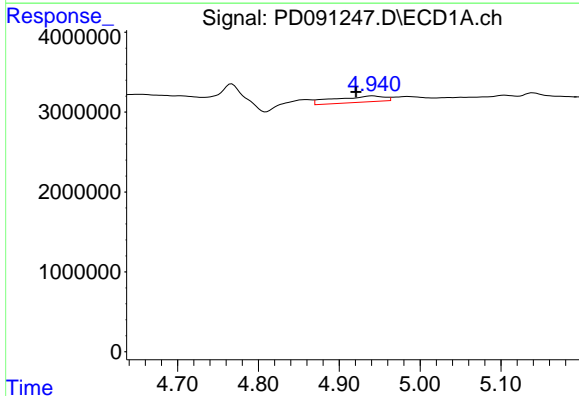
#3 gamma-BHC (Lindane)

R.T.: 3.718 min

Delta R.T.: -0.003 min

Response: 528246301

Conc: 9.14 ng/ml



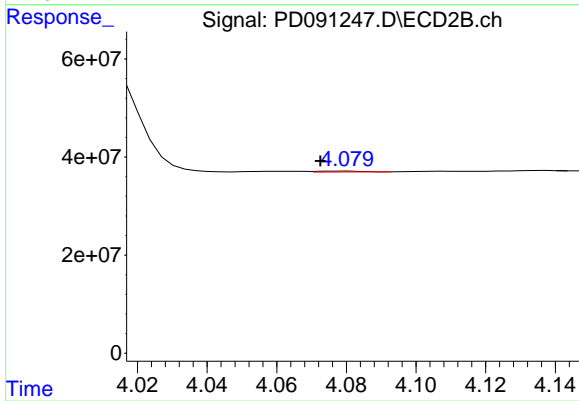
#4 Heptachlor

R.T.: 4.941 min

Delta R.T.: 0.020 min

Response: 3347700

Conc: 0.47 ng/ml



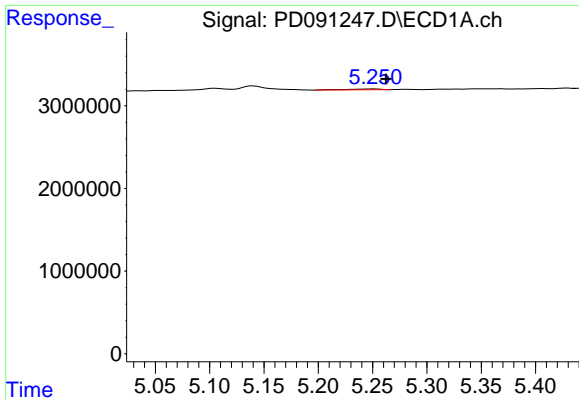
#4 Heptachlor

R.T.: 4.081 min

Delta R.T.: 0.008 min

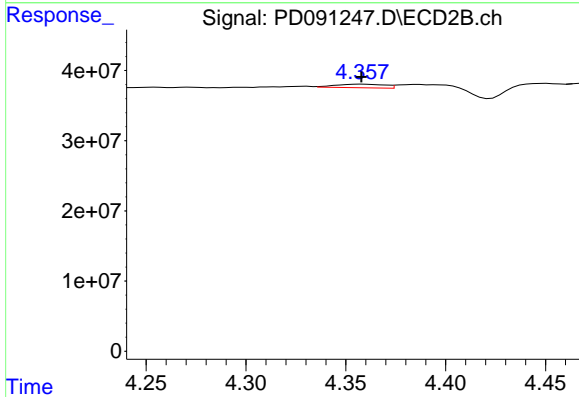
Response: 1751860

Conc: 0.03 ng/ml

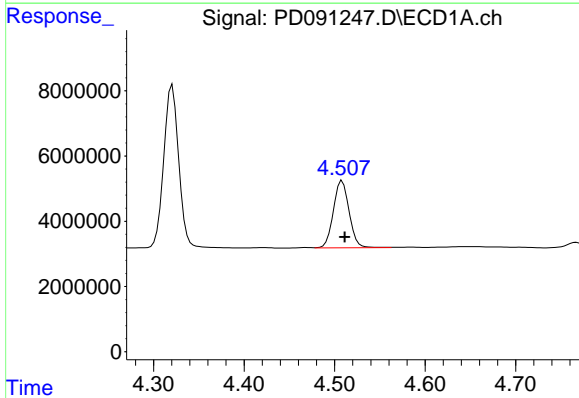


#5 Aldrin
 R.T.: 5.252 min
 Delta R.T.: -0.010 min
 Response: 200571
 Conc: 0.03 ng/ml

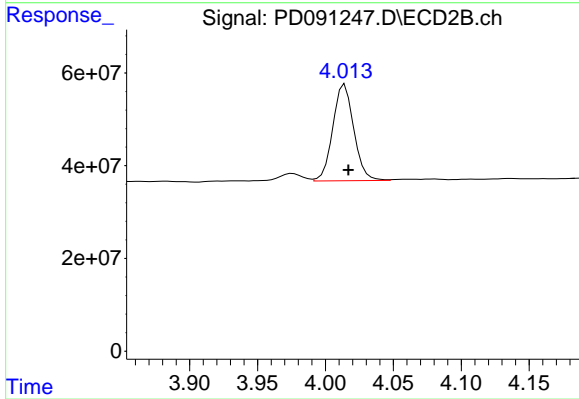
Instrument :
 ECD_D
 ClientSampleId :



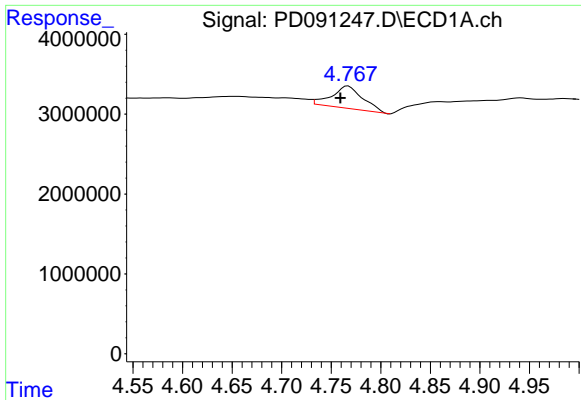
#5 Aldrin
 R.T.: 4.358 min
 Delta R.T.: 0.000 min
 Response: 8724944
 Conc: 0.15 ng/ml



#6 beta-BHC
 R.T.: 4.508 min
 Delta R.T.: -0.003 min
 Response: 24856728
 Conc: 8.56 ng/ml



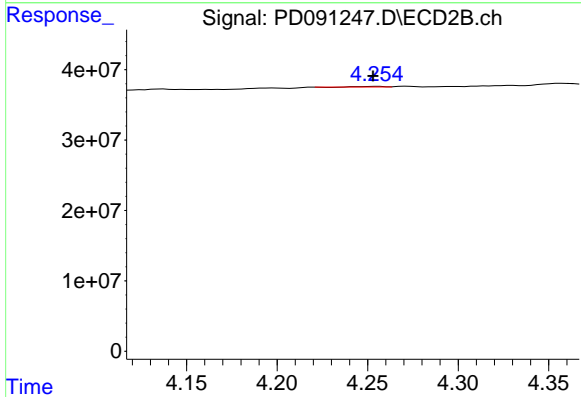
#6 beta-BHC
 R.T.: 4.014 min
 Delta R.T.: -0.003 min
 Response: 223719626
 Conc: 9.31 ng/ml



#7 delta-BHC

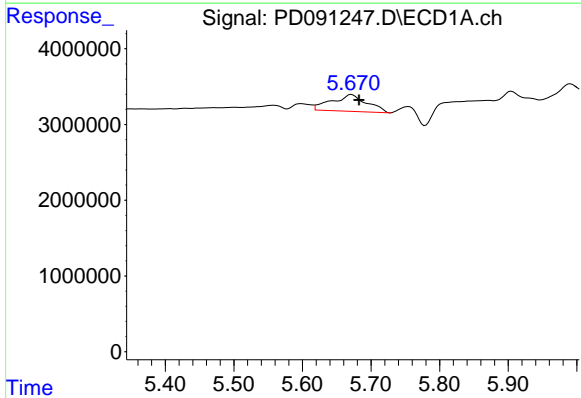
R.T.: 4.767 min
 Delta R.T.: 0.008 min
 Response: 6102283
 Conc: 0.82 ng/ml

Instrument :
 ECD_D
 ClientSampleId :



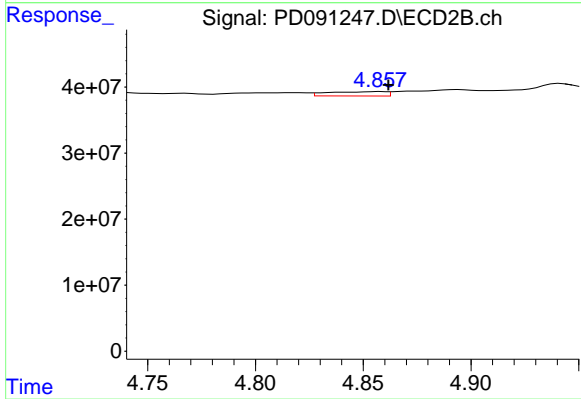
#7 delta-BHC

R.T.: 4.255 min
 Delta R.T.: 0.002 min
 Response: 630823
 Conc: 0.01 ng/ml



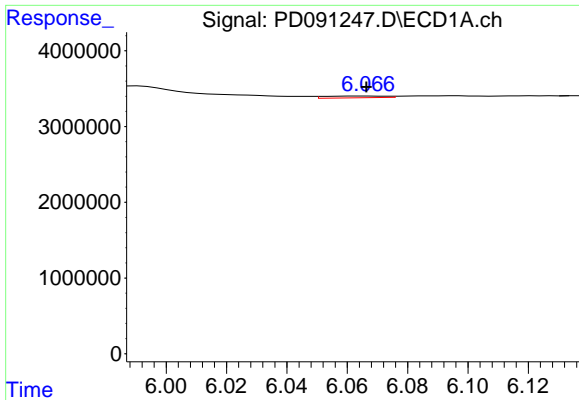
#8 Heptachlor epoxide

R.T.: 5.671 min
 Delta R.T.: -0.011 min
 Response: 7864690
 Conc: 1.21 ng/ml



#8 Heptachlor epoxide

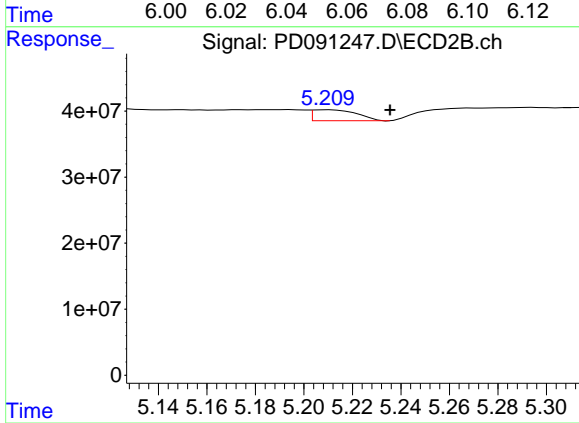
R.T.: 4.858 min
 Delta R.T.: -0.004 min
 Response: 12079059
 Conc: 0.24 ng/ml



#9 Endosulfan I

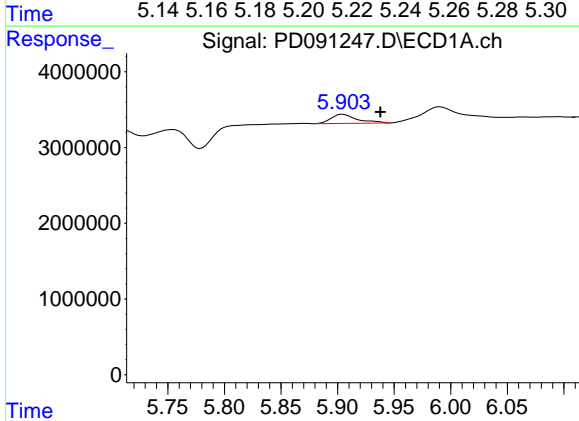
R.T.: 6.067 min
 Delta R.T.: 0.000 min
 Response: 330485
 Conc: 0.05 ng/ml

Instrument :
 ECD_D
 ClientSampleId :



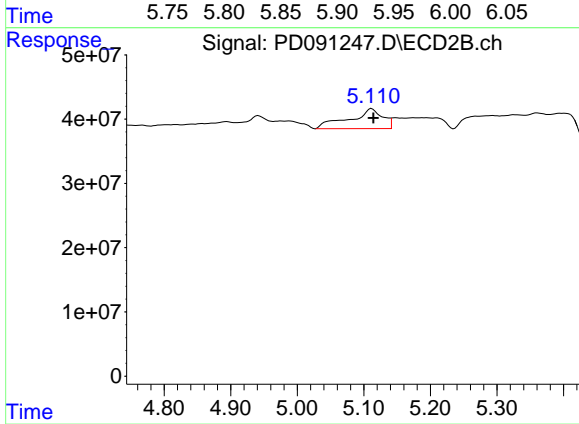
#9 Endosulfan I

R.T.: 5.210 min
 Delta R.T.: -0.025 min
 Response: 21310738
 Conc: 0.45 ng/ml



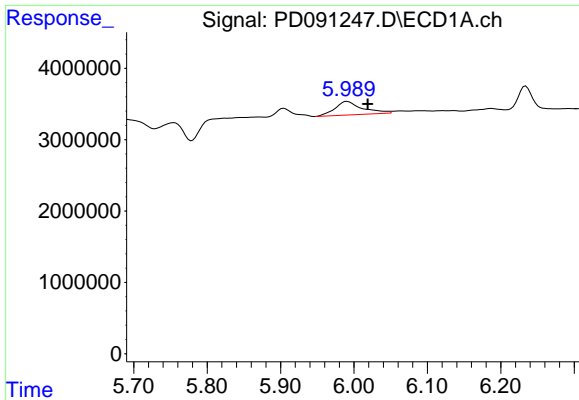
#10 gamma-Chlordane

R.T.: 5.905 min
 Delta R.T.: -0.033 min
 Response: 1905900
 Conc: 0.29 ng/ml



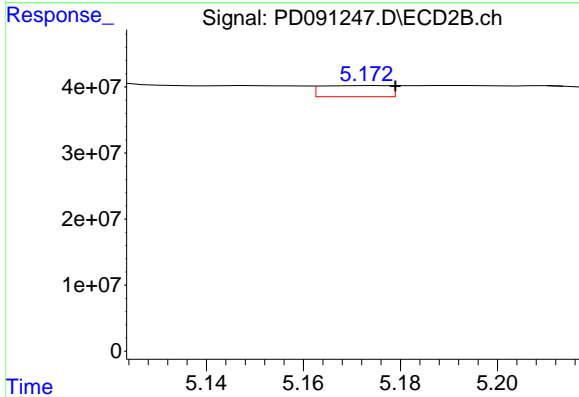
#10 gamma-Chlordane

R.T.: 5.112 min
 Delta R.T.: -0.003 min
 Response: 108647282
 Conc: 1.99 ng/ml

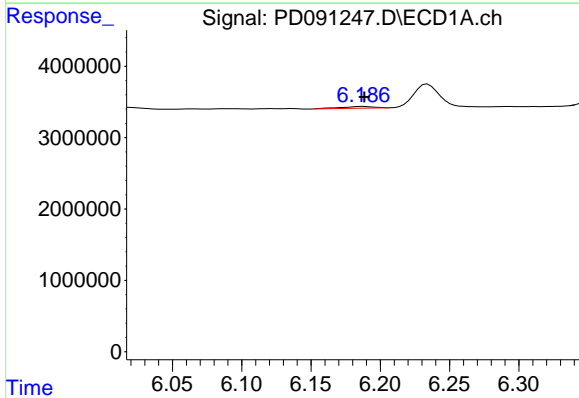


#11 alpha-Chlordane
 R.T.: 5.991 min
 Delta R.T.: -0.028 min
 Response: 4936966
 Conc: 0.72 ng/ml

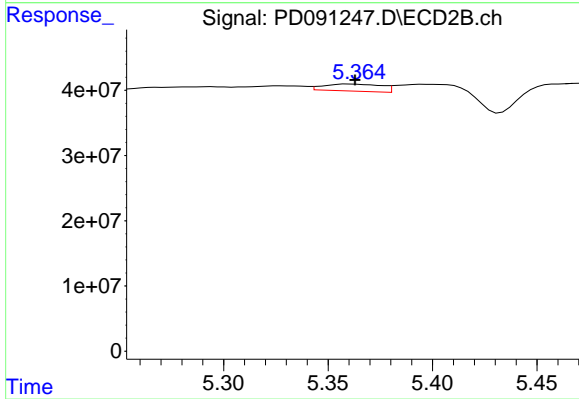
Instrument :
 ECD_D
 ClientSampleId :



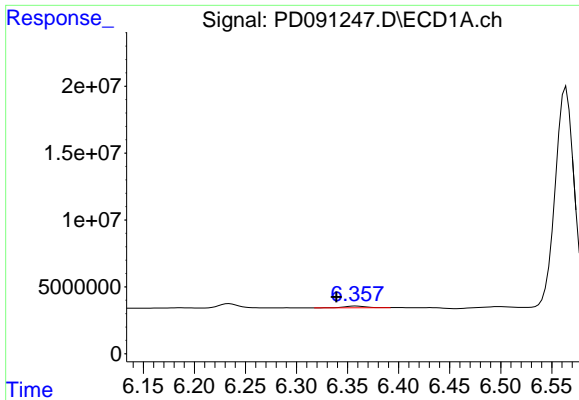
#11 alpha-Chlordane
 R.T.: 5.174 min
 Delta R.T.: -0.005 min
 Response: 16299036
 Conc: 0.31 ng/ml



#12 4,4'-DDE
 R.T.: 6.187 min
 Delta R.T.: -0.001 min
 Response: 412785
 Conc: 0.07 ng/ml



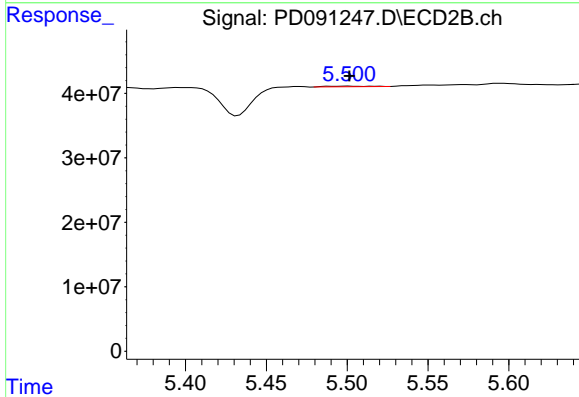
#12 4,4'-DDE
 R.T.: 5.360 min
 Delta R.T.: -0.003 min
 Response: 20783533
 Conc: 0.39 ng/ml



#13 Dieldrin

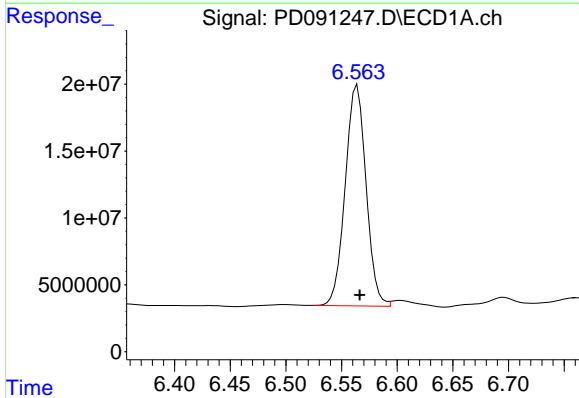
R.T.: 6.358 min
 Delta R.T.: 0.019 min
 Response: 1773474
 Conc: 0.27 ng/ml

Instrument : ECD_D
 ClientSampleId :



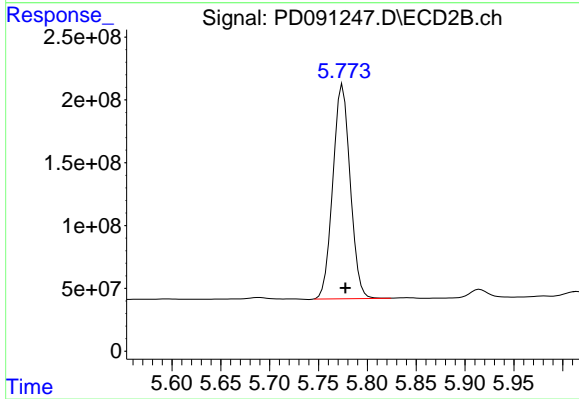
#13 Dieldrin

R.T.: 5.501 min
 Delta R.T.: 0.000 min
 Response: 1795852
 Conc: 0.03 ng/ml



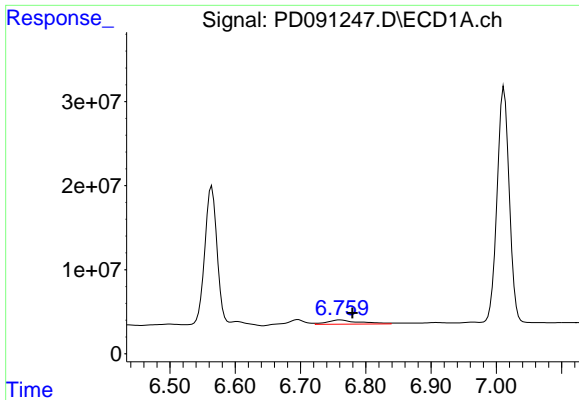
#14 Endrin

R.T.: 6.564 min
 Delta R.T.: -0.002 min
 Response: 215474073
 Conc: 43.41 ng/ml



#14 Endrin

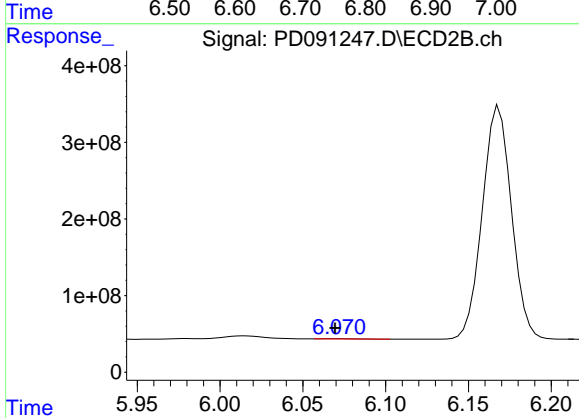
R.T.: 5.775 min
 Delta R.T.: -0.003 min
 Response: 2110105186
 Conc: 46.69 ng/ml



#15 Endosulfan II

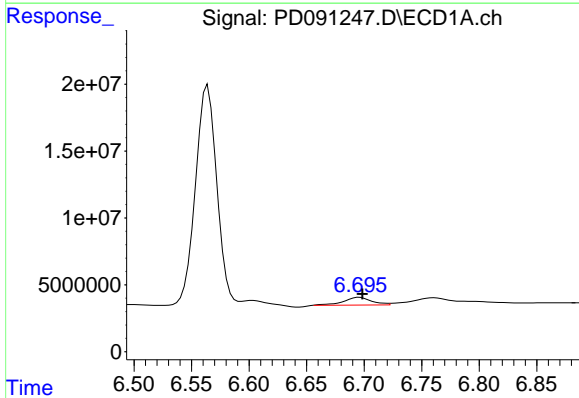
R.T.: 6.761 min
 Delta R.T.: -0.018 min
 Response: 17137330
 Conc: 3.08 ng/ml

Instrument :
 ECD_D
 ClientSampleId :



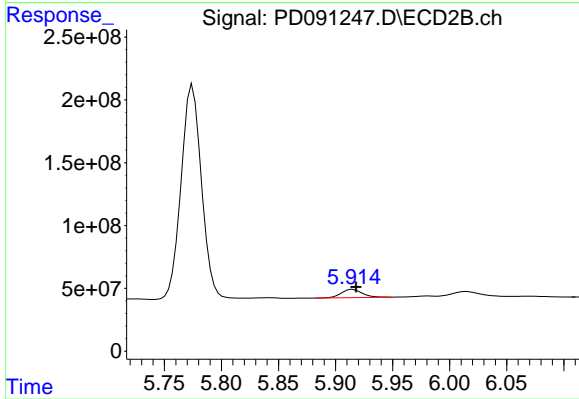
#15 Endosulfan II

R.T.: 6.070 min
 Delta R.T.: 0.000 min
 Response: 4567698
 Conc: 0.10 ng/ml



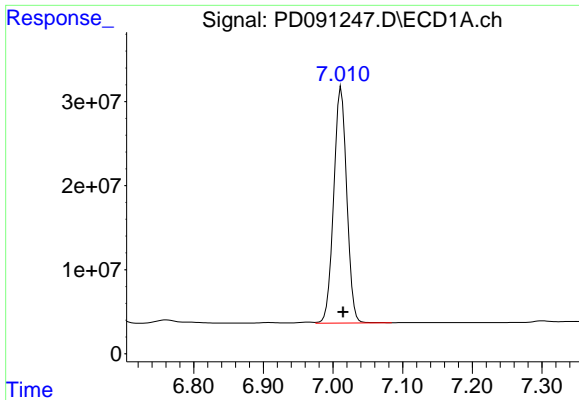
#16 4,4'-DDD

R.T.: 6.696 min
 Delta R.T.: -0.003 min
 Response: 9992583
 Conc: 2.03 ng/ml



#16 4,4'-DDD

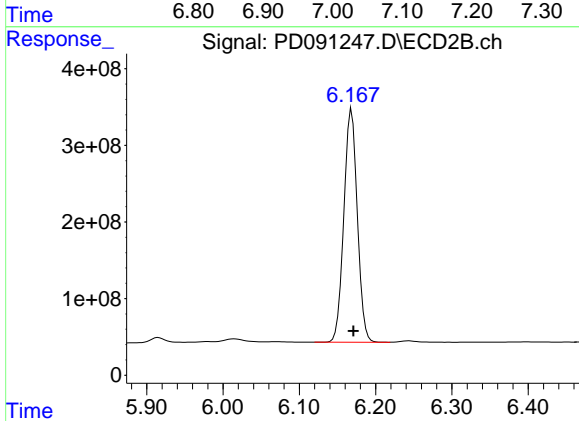
R.T.: 5.915 min
 Delta R.T.: -0.003 min
 Response: 82784853
 Conc: 1.69 ng/ml



#17 4,4'-DDT

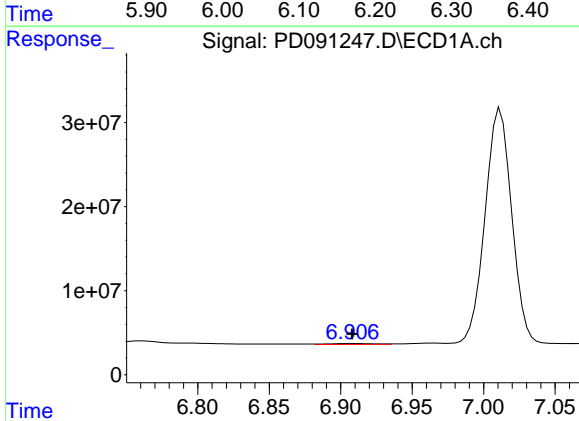
R.T.: 7.012 min
 Delta R.T.: -0.002 min
 Response: 365490338
 Conc: 88.38 ng/ml

Instrument :
 ECD_D
 ClientSampleId :



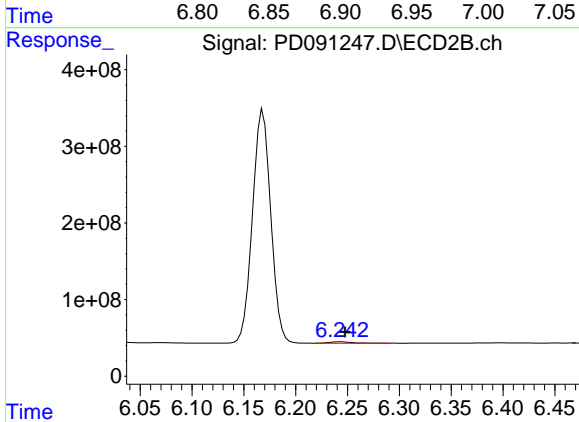
#17 4,4'-DDT

R.T.: 6.169 min
 Delta R.T.: -0.003 min
 Response: 3741880868
 Conc: 95.62 ng/ml



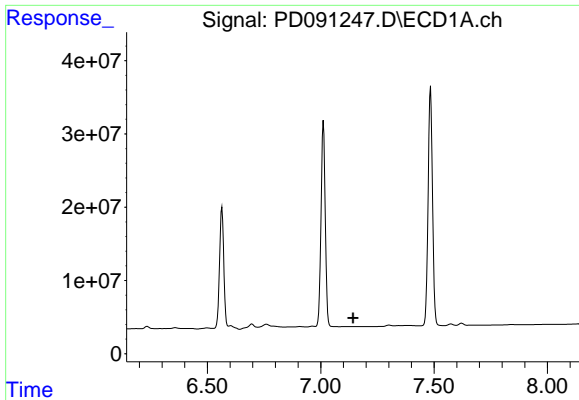
#18 Endrin aldehyde

R.T.: 6.908 min
 Delta R.T.: 0.000 min
 Response: 2783787
 Conc: 0.67 ng/ml



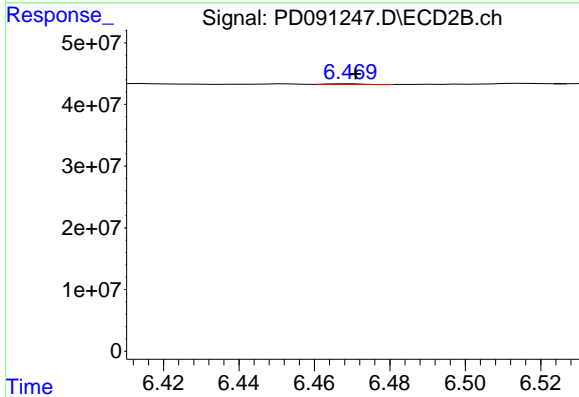
#18 Endrin aldehyde

R.T.: 6.243 min
 Delta R.T.: -0.004 min
 Response: 27497108
 Conc: 0.78 ng/ml

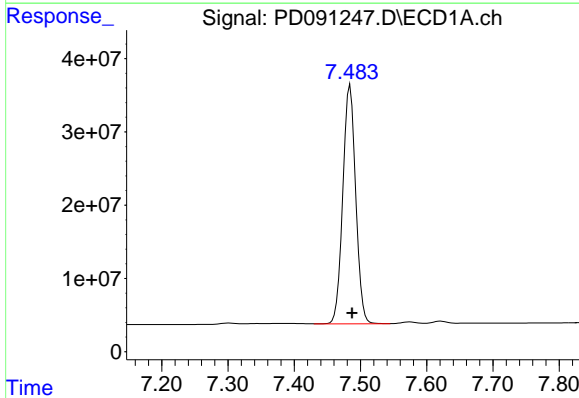


#19 Endosulfan Sulfate
 R.T.: 0.000 min
 Exp R.T.: 7.143 min
 Response: 0
 Conc: N.D.

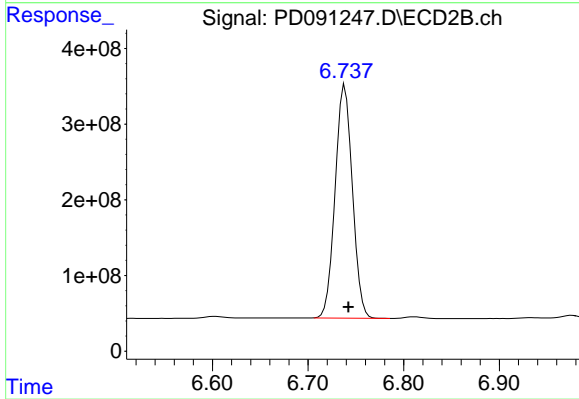
Instrument :
 ECD_D
 ClientSampleId :



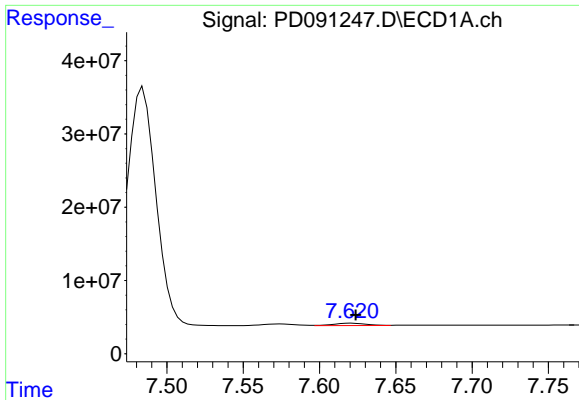
#19 Endosulfan Sulfate
 R.T.: 6.470 min
 Delta R.T.: -0.001 min
 Response: 846924
 Conc: 0.02 ng/ml



#20 Methoxychlor
 R.T.: 7.484 min
 Delta R.T.: -0.003 min
 Response: 441178628
 Conc: 202.90 ng/ml



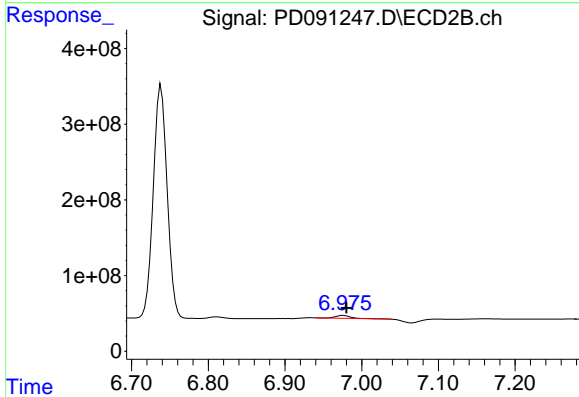
#20 Methoxychlor
 R.T.: 6.739 min
 Delta R.T.: -0.004 min
 Response: 3863210718
 Conc: 192.67 ng/ml



#21 Endrin ketone

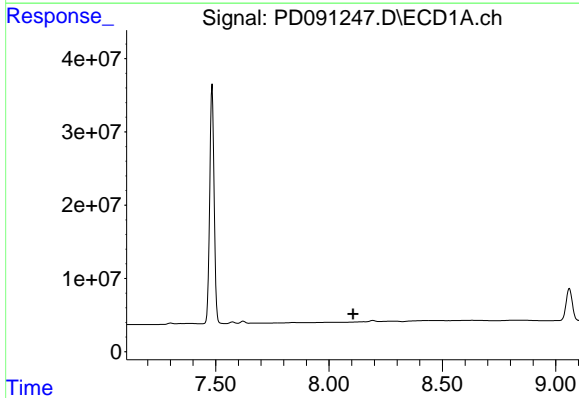
R.T.: 7.621 min
 Delta R.T.: -0.003 min
 Response: 4633315
 Conc: 0.82 ng/ml

Instrument :
 ECD_D
 ClientSampleId :



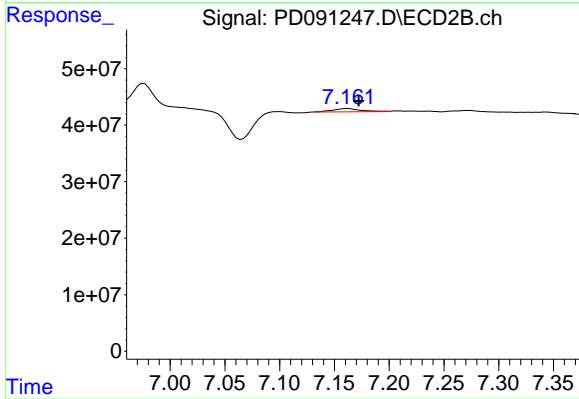
#21 Endrin ketone

R.T.: 6.976 min
 Delta R.T.: -0.004 min
 Response: 51404481
 Conc: 1.01 ng/ml



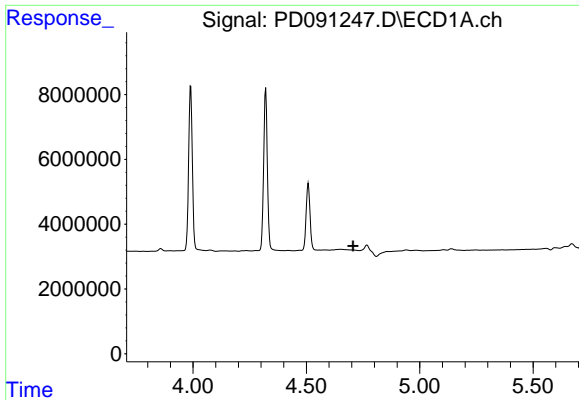
#22 Mirex

R.T.: 0.000 min
 Exp R.T. : 8.106 min
 Response: 0
 Conc: N.D.



#22 Mirex

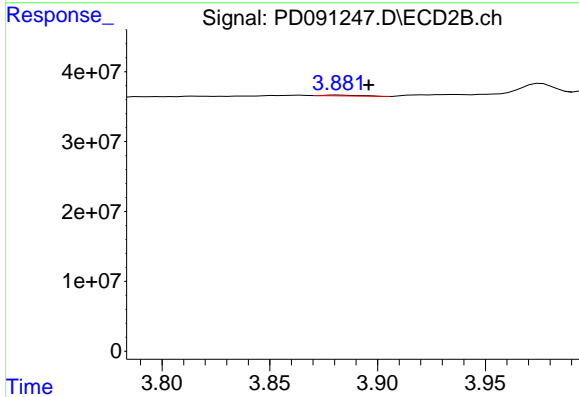
R.T.: 7.162 min
 Delta R.T.: -0.010 min
 Response: 9917360
 Conc: 0.30 ng/ml



#23 Chlordane-1

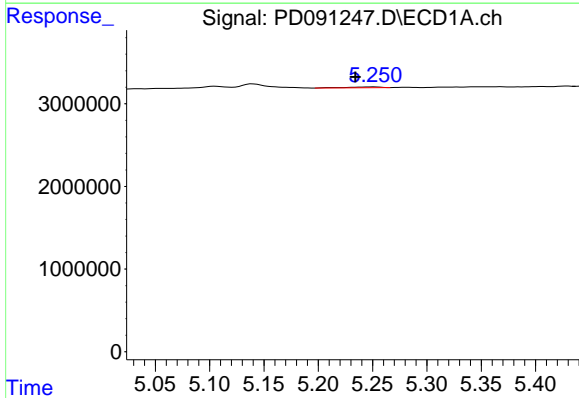
R.T.: 0.000 min
 Exp R.T.: 4.707 min
 Response: 0
 Conc: N.D.

Instrument :
 ECD_D
 ClientSampleId :



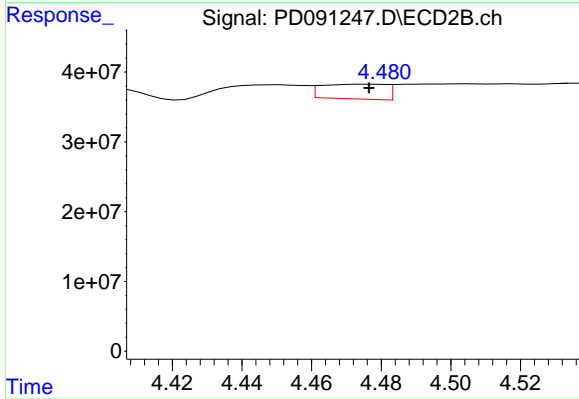
#23 Chlordane-1

R.T.: 3.882 min
 Delta R.T.: -0.014 min
 Response: 1406250
 Conc: 0.82 ng/ml



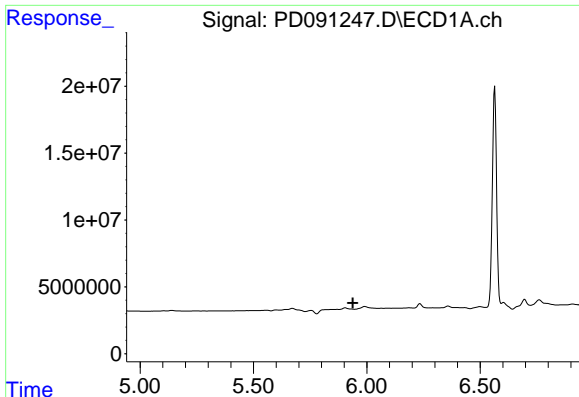
#24 Chlordane-2

R.T.: 5.252 min
 Delta R.T.: 0.018 min
 Response: 200571
 Conc: 0.81 ng/ml



#24 Chlordane-2

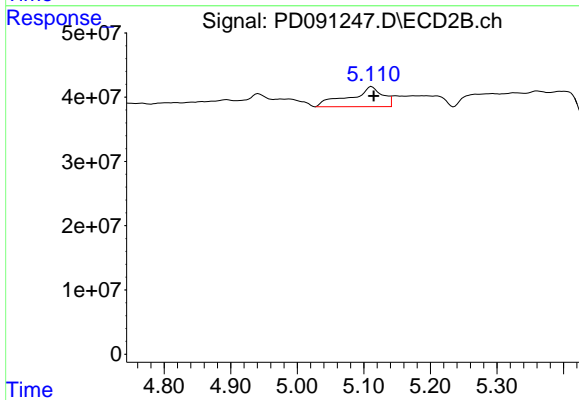
R.T.: 4.475 min
 Delta R.T.: -0.001 min
 Response: 27185322
 Conc: 15.53 ng/ml



#25 Chlordane-3

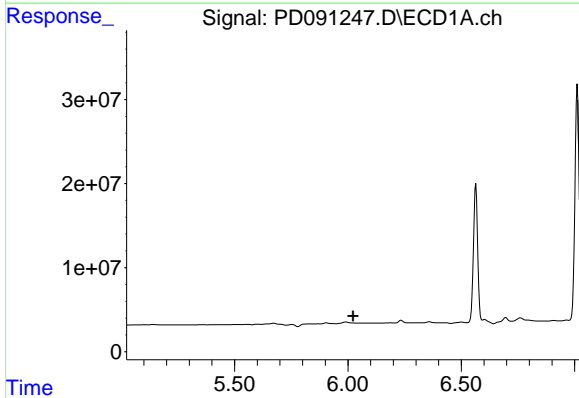
R.T.: 0.000 min
 Exp R.T. : 5.939 min
 Response: 0
 Conc: N.D.

Instrument :
 ECD_D
 ClientSampleId :



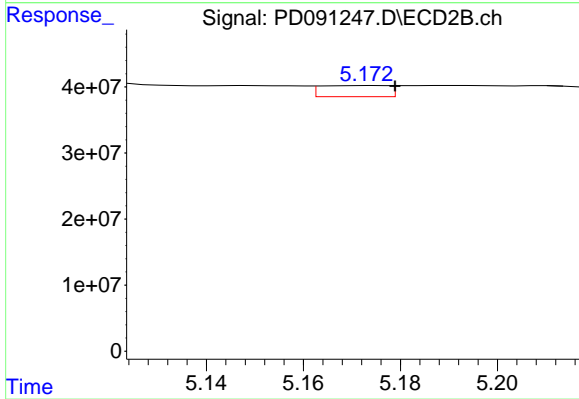
#25 Chlordane-3

R.T.: 5.112 min
 Delta R.T.: -0.003 min
 Response: 108647282
 Conc: 18.88 ng/ml



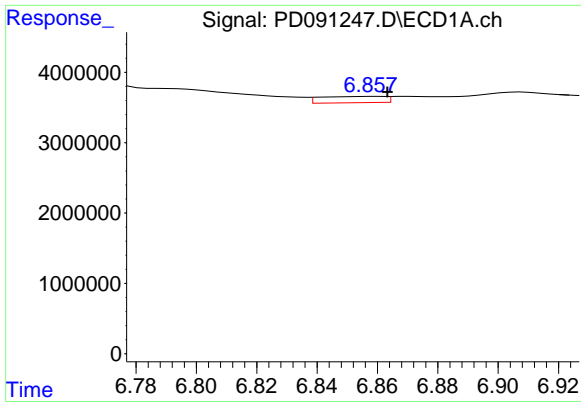
#26 Chlordane-4

R.T.: 0.000 min
 Exp R.T. : 6.024 min
 Response: 0
 Conc: N.D.



#26 Chlordane-4

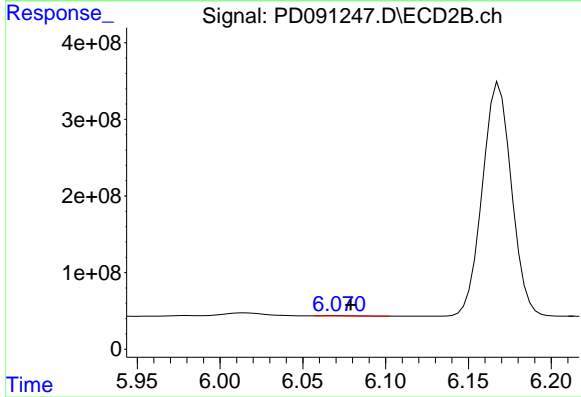
R.T.: 5.174 min
 Delta R.T.: -0.005 min
 Response: 16299036
 Conc: 3.41 ng/ml



#27 Chlordane-5

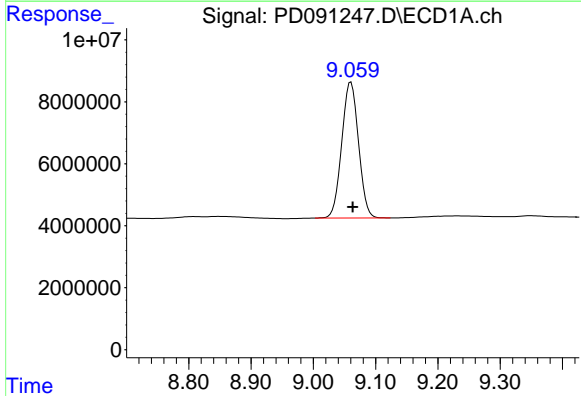
R.T.: 6.860 min
 Delta R.T.: -0.004 min
 Response: 1307993
 Conc: 6.62 ng/ml

Instrument :
 ECD_D
 ClientSampleId :



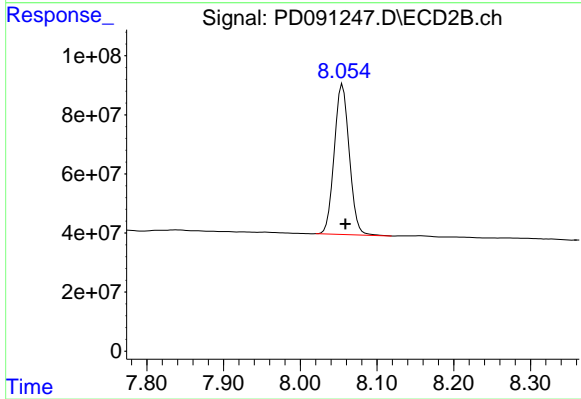
#27 Chlordane-5

R.T.: 6.070 min
 Delta R.T.: -0.008 min
 Response: 4567698
 Conc: 2.25 ng/ml



#28 Decachlorobiphenyl

R.T.: 9.060 min
 Delta R.T.: -0.003 min
 Response: 82439336
 Conc: 16.55 ng/ml



#28 Decachlorobiphenyl

R.T.: 8.055 min
 Delta R.T.: -0.004 min
 Response: 692056051
 Conc: 17.49 ng/ml