

Data Path : Z:\pestpcbsrv\HPCHEM1\ECD_D\Data\PD111825\
 Data File : PD091252.D
 Signal(s) : Signal #1: ECD1A.ch Signal #2: ECD2B.ch
 Acq On : 18 Nov 2025 13:05
 Operator : AR\AJ
 Sample : Q3658-01MS 10X
 Misc :
 ALS Vial : 8 Sample Multiplier: 1

Instrument :
 ECD_D
 ClientSampleId :

Integration File signal 1: autoint1.e
 Integration File signal 2: autoint2.e
 Quant Time: Nov 18 22:15:02 2025
 Quant Method : Z:\pestpcbsrv\HPCHEM1\ECD_D\Method\PD111525.M
 Quant Title : GC Extractables
 QLast Update : Sat Nov 15 04:46:13 2025
 Response via : Initial Calibration
 Integrator: ChemStation

Volume Inj. : 1 µl
 Signal #1 Phase : ZB-MR2 Signal #2 Phase: ZB-MR2
 Signal #1 Info : 30M x 0.32mm x0.5 Signal #2 Info : 30M x 0.32mm x 0.25µm

Compound	RT#1	RT#2	Resp#1	Resp#2	ng/ml	ng/ml

System Monitoring Compounds						
1) SA Tetrachlo...	3.542	2.871	18552619	79191909	5.380	2.162 #
28) SA Decachlor...	9.060	8.056	8142159	66783692	1.634	1.688
Target Compounds						
2) A alpha-BHC	3.990	3.382	34212793	335.4E6	4.279	5.307
3) MA gamma-BHC...	4.321	3.718	31886260	309.5E6	4.267	5.352 #
4) MA Heptachlor	4.918	4.070	35693285	309.1E6	4.984	5.598
5) MB Aldrin	5.260	4.355	33200332	306.8E6	4.575	5.434
6) B beta-BHC	4.509	4.015	14951423	152.3E6	5.146	6.341
7) B delta-BHC	4.757	4.250	36801214	311.2E6	4.952	5.321
8) B Heptachlo...	5.680	4.859	35116739	322.3E6	5.405	6.324
9) A Endosulfan I	6.064	5.233	30213693	279.5E6	4.918	5.841
10) B gamma-Chl...	5.935	5.111	28120999	403.8E6	4.326	7.393 #
11) B alpha-Chl...	6.016	5.176	38122072	322.6E6	5.539	6.165
12) B 4,4'-DDE	6.186	5.361	29690378	332.1E6	5.120	6.214
13) MA Dieldrin	6.336	5.499	29803276	302.0E6	4.610	5.560
14) MA Endrin	6.564	5.775	25891419	394.0E6	5.216	8.718 #
15) B Endosulfa...	6.777	6.067	30230959	248.8E6	5.438	5.331
16) A 4,4'-DDD	6.696	5.916	21155590	254.6E6	4.307	5.210
17) MA 4,4'-DDT	7.012	6.169	25335229	269.8E6	6.126	6.895
18) B Endrin al...	6.906	6.245	21767770	201.1E6	5.225	5.698
19) B Endosulfa...	7.141	6.469	23780786	238.7E6	4.622	5.324
20) A Methoxychlor	7.485	6.740	11606691	118.7E6	5.338	5.920
21) B Endrin ke...	7.622	6.978	24462476	262.6E6	4.342	5.154
22) Mirex	8.103	7.169	16041817	187.9E6	4.510	5.669 #
23) Chlordane-1	0.000	3.894	0	1787112	N.D.	1.039 #
24) Chlordane-2	5.209f	4.479	72738	7936180	0.295	4.532 #
25) Chlordane-3	5.935	5.111	28120999	403.8E6	29.146	70.189 #
26) Chlordane-4	6.016	5.176	38122072	322.6E6	31.737	67.444 #
27) Chlordane-5	0.000	6.067	0	248.8E6	N.D.	122.630 #

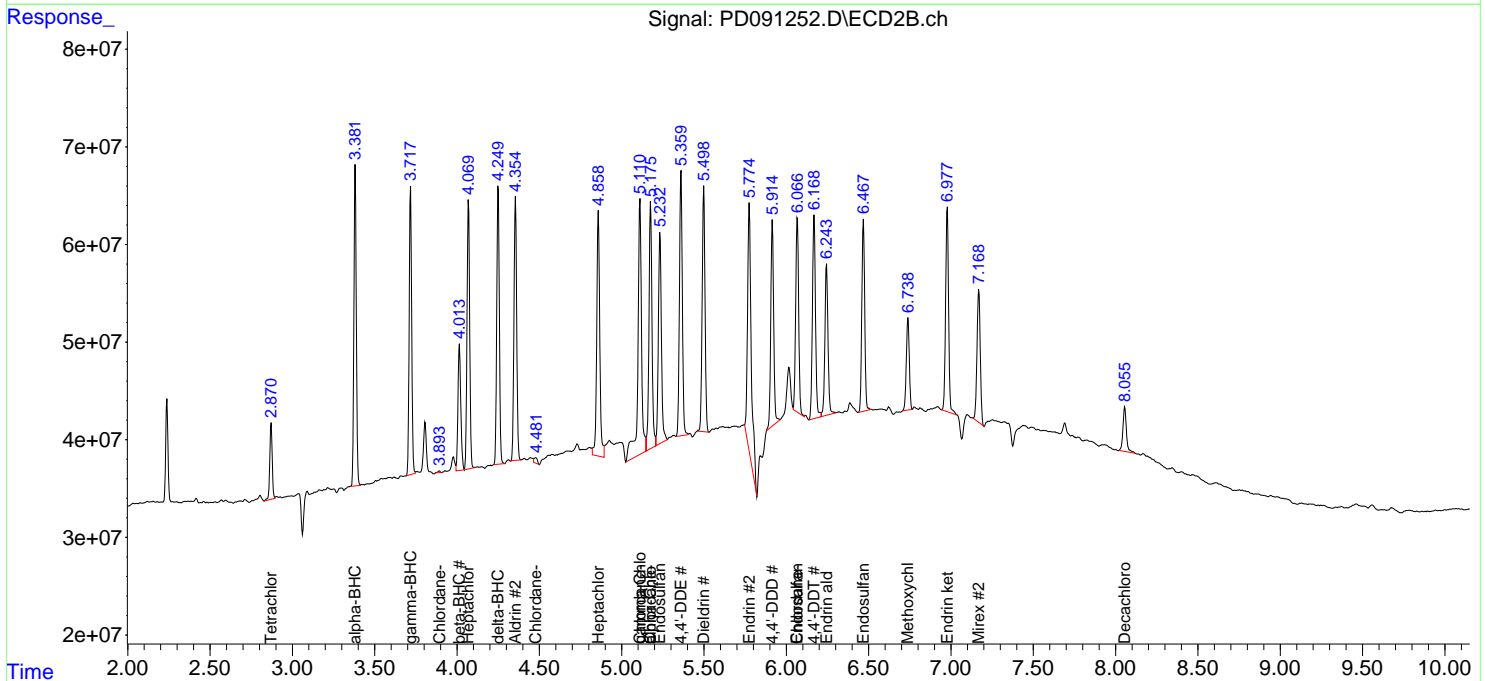
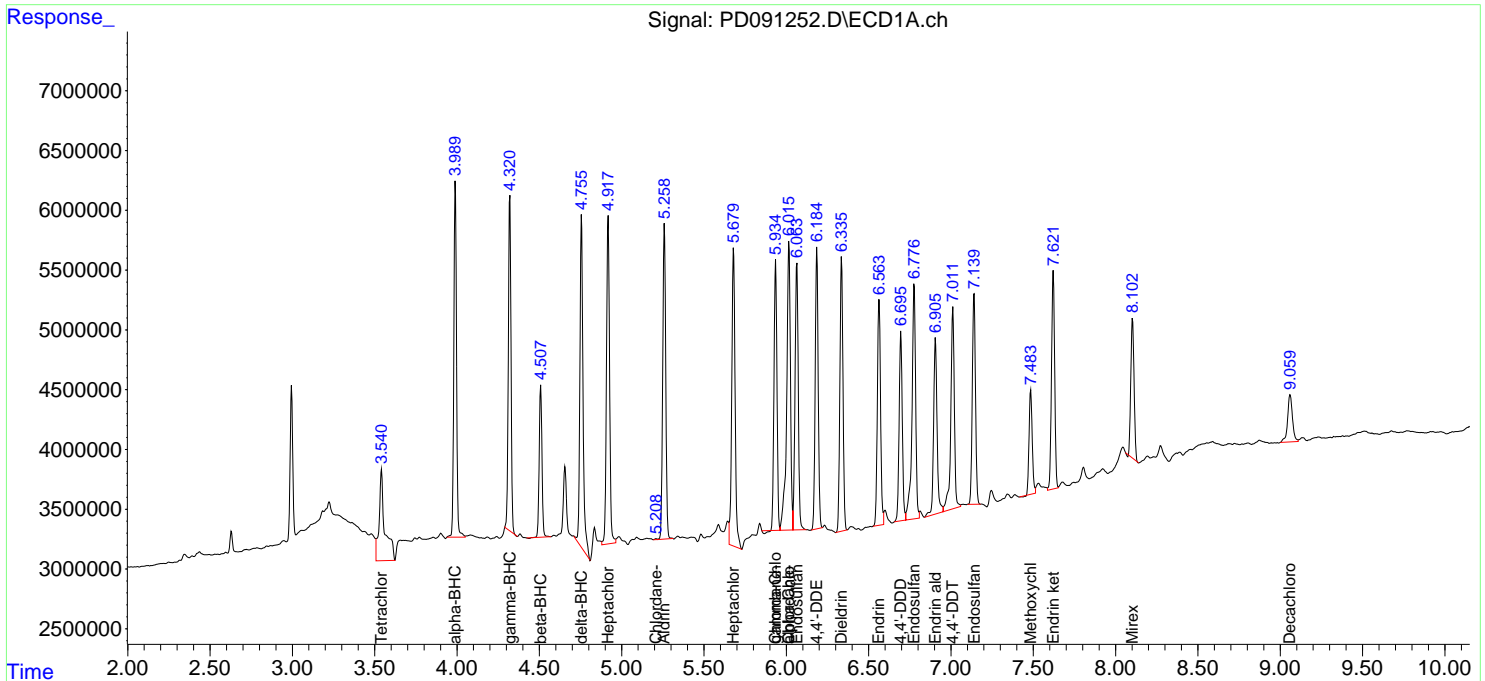
(f)=RT Delta > 1/2 Window (#)=Amounts differ by > 25% (m)=manual int.

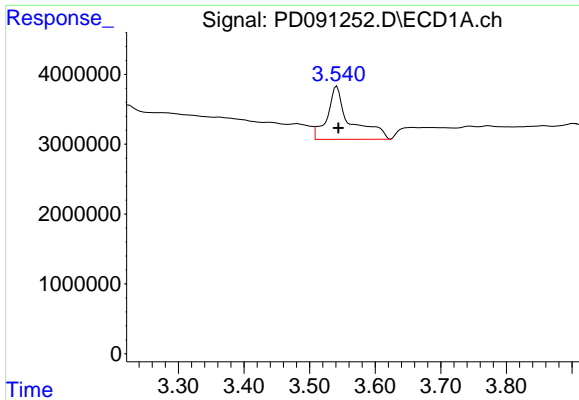
Data Path : Z:\pestpcbsrv\HPCHEM1\ECD_D\Data\PD111825\
 Data File : PD091252.D
 Signal(s) : Signal #1: ECD1A.ch Signal #2: ECD2B.ch
 Acq On : 18 Nov 2025 13:05
 Operator : AR\AJ
 Sample : Q3658-01MS 10X
 Misc :
 ALS Vial : 8 Sample Multiplier: 1

Instrument :
 ECD_D
 ClientSampleId :

Integration File signal 1: autoint1.e
 Integration File signal 2: autoint2.e
 Quant Time: Nov 18 22:15:02 2025
 Quant Method : Z:\pestpcbsrv\HPCHEM1\ECD_D\Method\PD111525.M
 Quant Title : GC Extractables
 QLast Update : Sat Nov 15 04:46:13 2025
 Response via : Initial Calibration
 Integrator: ChemStation

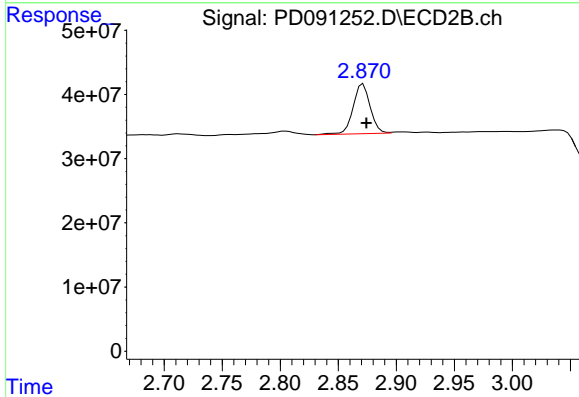
Volume Inj. : 1 µl
 Signal #1 Phase : ZB-MR1 Signal #2 Phase: ZB-MR2
 Signal #1 Info : 30M x 0.32mm x0.5 Signal #2 Info : 30M x 0.32mm x 0.25µm



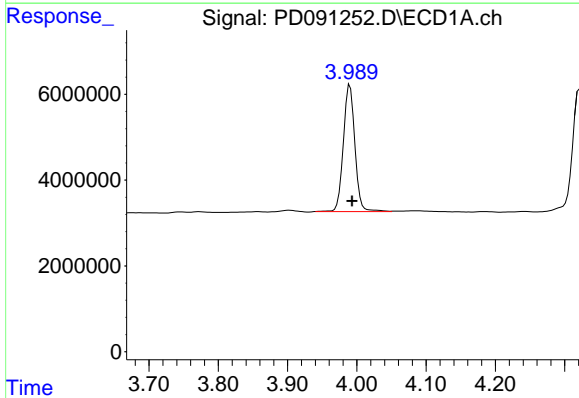


#1 Tetrachloro-m-xylene
 R.T.: 3.542 min
 Delta R.T.: -0.002 min
 Response: 18552619
 Conc: 5.38 ng/ml

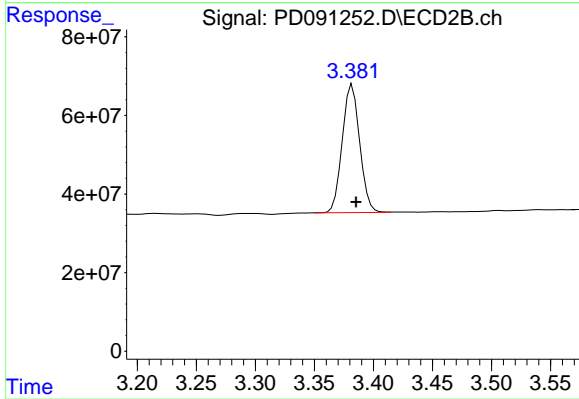
Instrument :
 ECD_D
 ClientSampleId :



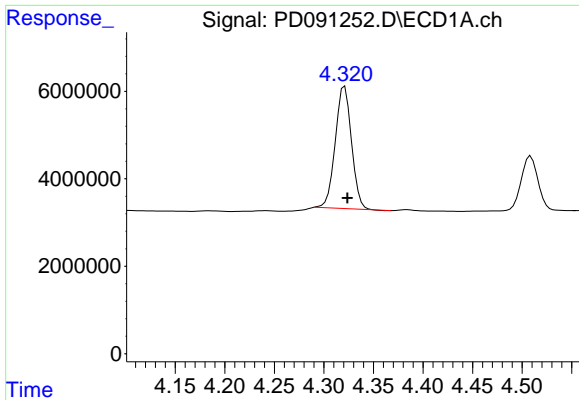
#1 Tetrachloro-m-xylene
 R.T.: 2.871 min
 Delta R.T.: -0.003 min
 Response: 79191909
 Conc: 2.16 ng/ml



#2 alpha-BHC
 R.T.: 3.990 min
 Delta R.T.: -0.003 min
 Response: 34212793
 Conc: 4.28 ng/ml



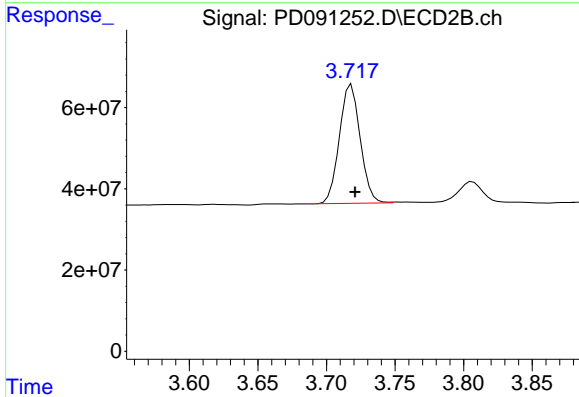
#2 alpha-BHC
 R.T.: 3.382 min
 Delta R.T.: -0.003 min
 Response: 335387763
 Conc: 5.31 ng/ml



#3 gamma-BHC (Lindane)

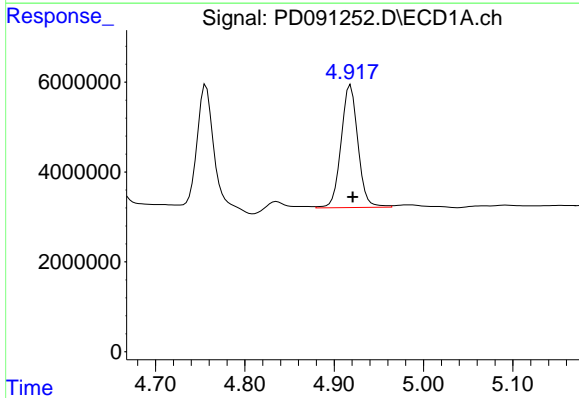
R.T.: 4.321 min
 Delta R.T.: -0.003 min
 Response: 31886260
 Conc: 4.27 ng/ml

Instrument :
 ECD_D
 ClientSampleId :



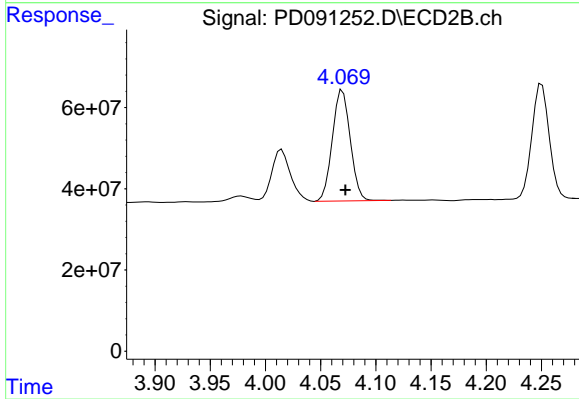
#3 gamma-BHC (Lindane)

R.T.: 3.718 min
 Delta R.T.: -0.003 min
 Response: 309467041
 Conc: 5.35 ng/ml



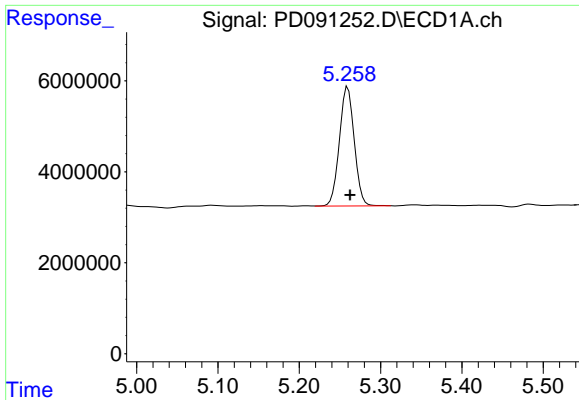
#4 Heptachlor

R.T.: 4.918 min
 Delta R.T.: -0.003 min
 Response: 35693285
 Conc: 4.98 ng/ml



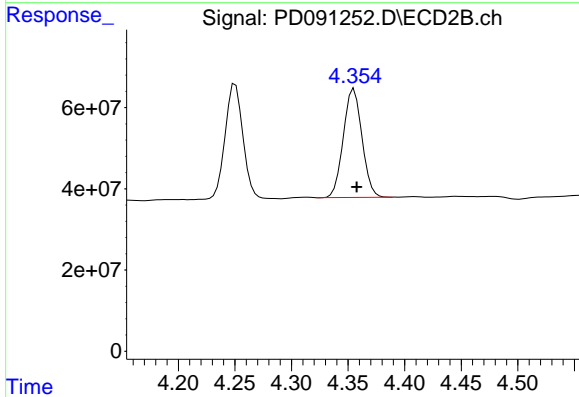
#4 Heptachlor

R.T.: 4.070 min
 Delta R.T.: -0.003 min
 Response: 309086551
 Conc: 5.60 ng/ml

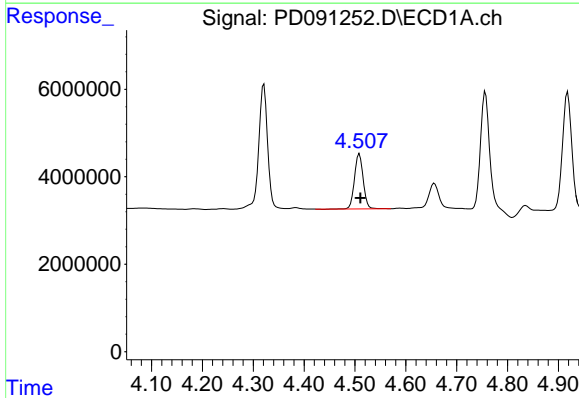


#5 Aldrin
 R.T.: 5.260 min
 Delta R.T.: -0.003 min
 Response: 33200332
 Conc: 4.58 ng/ml

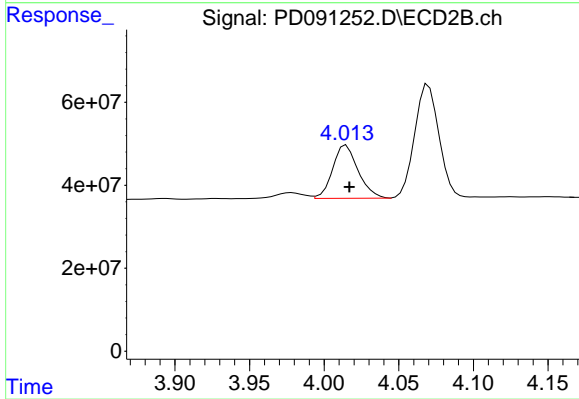
Instrument :
 ECD_D
 ClientSampleId :



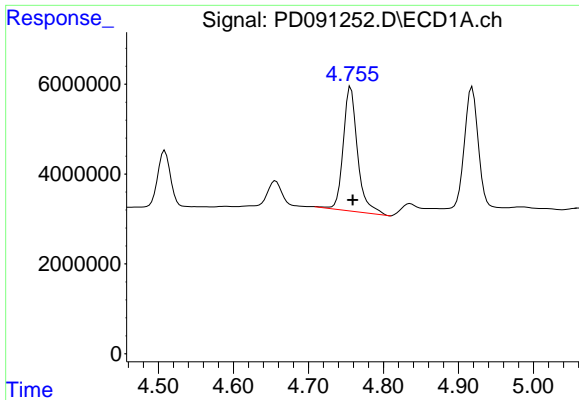
#5 Aldrin
 R.T.: 4.355 min
 Delta R.T.: -0.003 min
 Response: 306808359
 Conc: 5.43 ng/ml



#6 beta-BHC
 R.T.: 4.509 min
 Delta R.T.: -0.002 min
 Response: 14951423
 Conc: 5.15 ng/ml



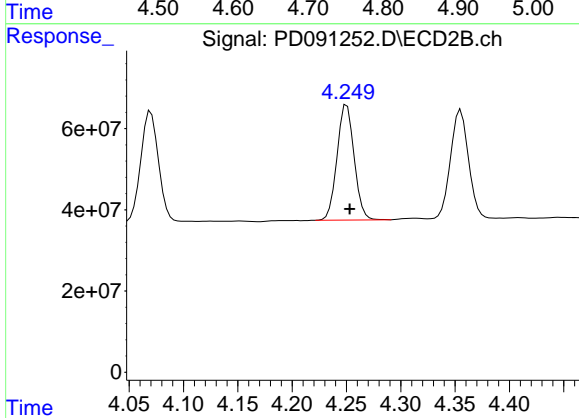
#6 beta-BHC
 R.T.: 4.015 min
 Delta R.T.: -0.002 min
 Response: 152349021
 Conc: 6.34 ng/ml



#7 delta-BHC

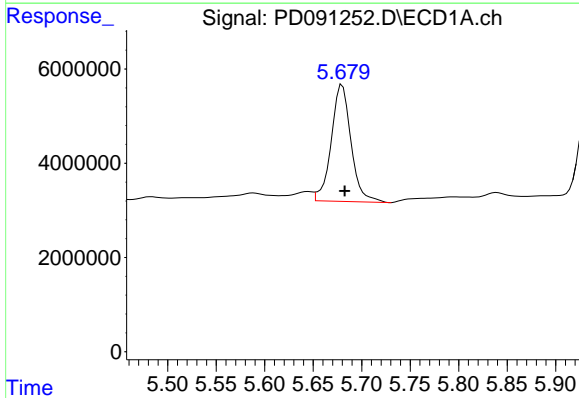
R.T.: 4.757 min
 Delta R.T.: -0.003 min
 Response: 36801214
 Conc: 4.95 ng/ml

Instrument :
 ECD_D
 ClientSampleId :



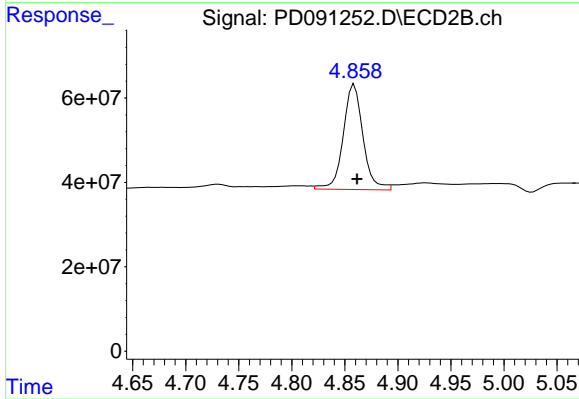
#7 delta-BHC

R.T.: 4.250 min
 Delta R.T.: -0.003 min
 Response: 311163290
 Conc: 5.32 ng/ml



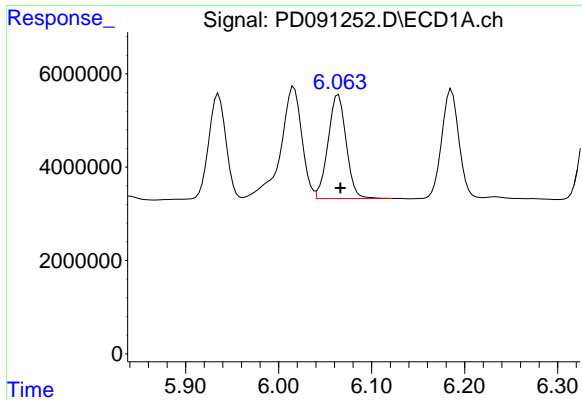
#8 Heptachlor epoxide

R.T.: 5.680 min
 Delta R.T.: -0.003 min
 Response: 35116739
 Conc: 5.41 ng/ml



#8 Heptachlor epoxide

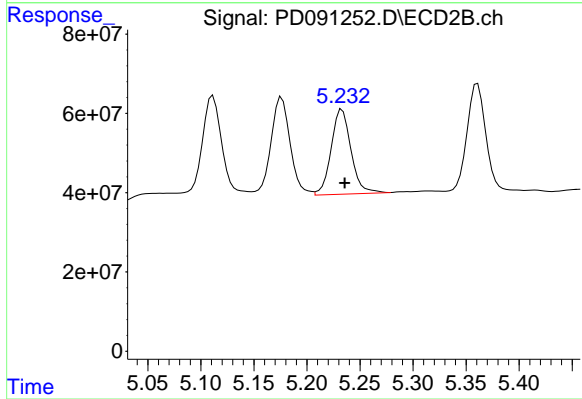
R.T.: 4.859 min
 Delta R.T.: -0.003 min
 Response: 322263041
 Conc: 6.32 ng/ml



#9 Endosulfan I

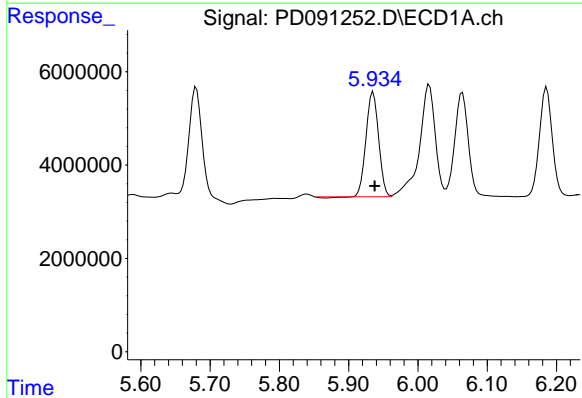
R.T.: 6.064 min
 Delta R.T.: -0.002 min
 Response: 30213693
 Conc: 4.92 ng/ml

Instrument :
 ECD_D
 ClientSampleId :



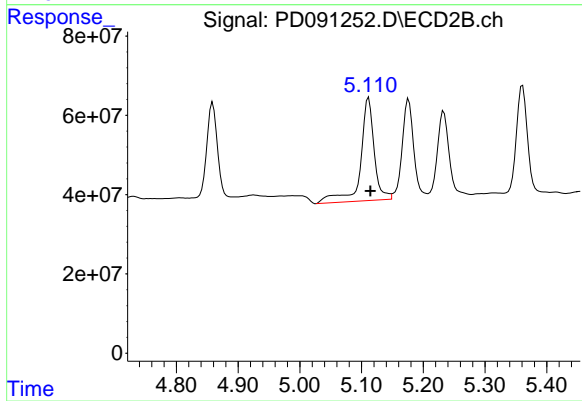
#9 Endosulfan I

R.T.: 5.233 min
 Delta R.T.: -0.002 min
 Response: 279480355
 Conc: 5.84 ng/ml



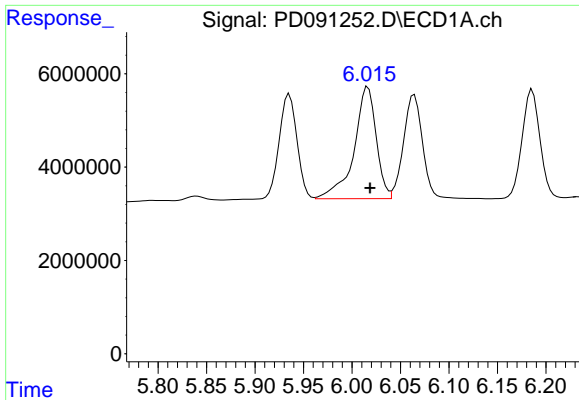
#10 gamma-Chlordane

R.T.: 5.935 min
 Delta R.T.: -0.002 min
 Response: 28120999
 Conc: 4.33 ng/ml



#10 gamma-Chlordane

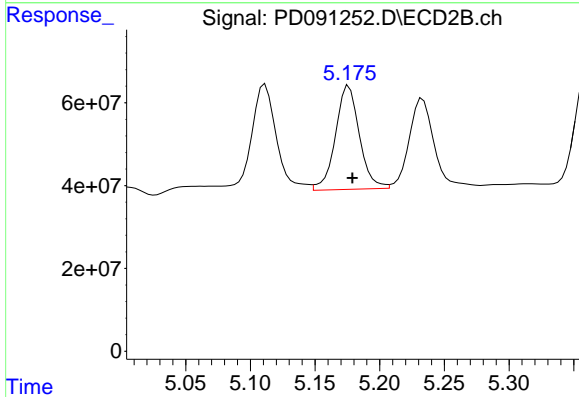
R.T.: 5.111 min
 Delta R.T.: -0.003 min
 Response: 403838186
 Conc: 7.39 ng/ml



#11 alpha-Chlordane

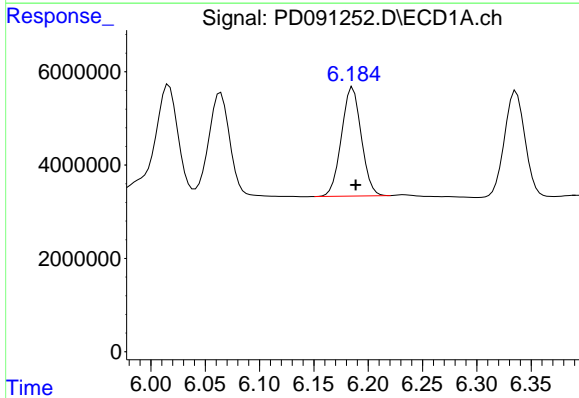
R.T.: 6.016 min
 Delta R.T.: -0.002 min
 Response: 38122072
 Conc: 5.54 ng/ml

Instrument :
 ECD_D
 ClientSampleId :



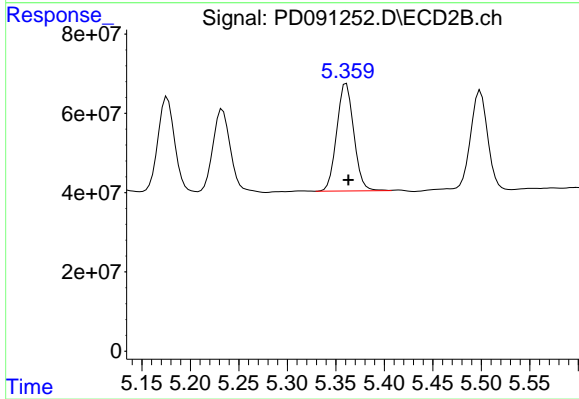
#11 alpha-Chlordane

R.T.: 5.176 min
 Delta R.T.: -0.003 min
 Response: 322622903
 Conc: 6.16 ng/ml



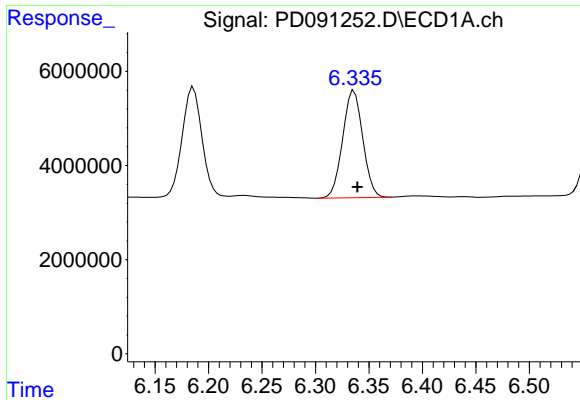
#12 4,4'-DDE

R.T.: 6.186 min
 Delta R.T.: -0.003 min
 Response: 29690378
 Conc: 5.12 ng/ml



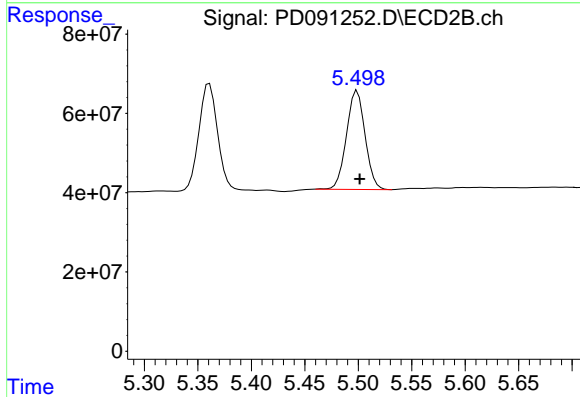
#12 4,4'-DDE

R.T.: 5.361 min
 Delta R.T.: -0.002 min
 Response: 332115548
 Conc: 6.21 ng/ml

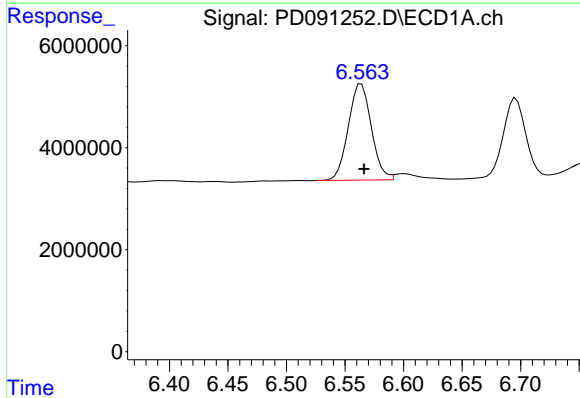


#13 Dieldrin
 R.T.: 6.336 min
 Delta R.T.: -0.003 min
 Response: 29803276
 Conc: 4.61 ng/ml

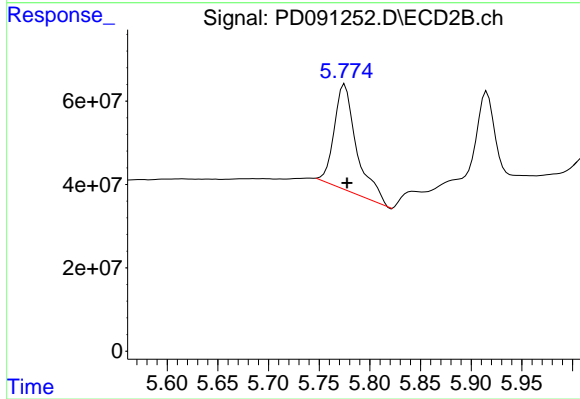
Instrument :
 ECD_D
 ClientSampleId :



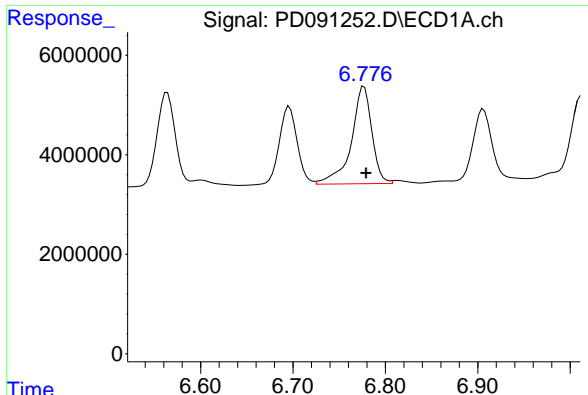
#13 Dieldrin
 R.T.: 5.499 min
 Delta R.T.: -0.002 min
 Response: 301970318
 Conc: 5.56 ng/ml



#14 Endrin
 R.T.: 6.564 min
 Delta R.T.: -0.002 min
 Response: 25891419
 Conc: 5.22 ng/ml



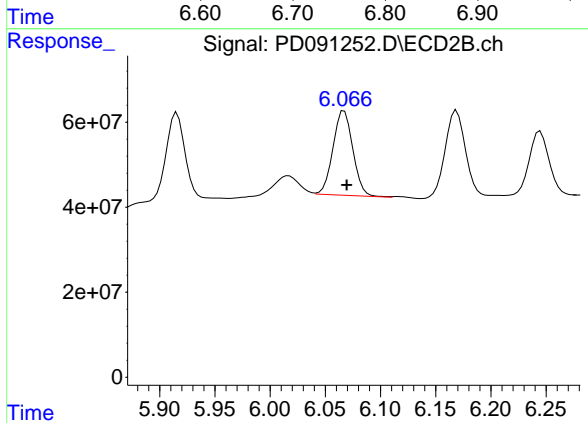
#14 Endrin
 R.T.: 5.775 min
 Delta R.T.: -0.002 min
 Response: 393993573
 Conc: 8.72 ng/ml



#15 Endosulfan II

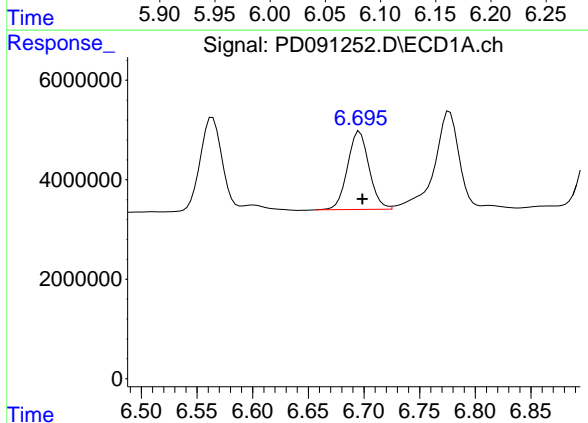
R.T.: 6.777 min
Delta R.T.: -0.002 min
Response: 30230959
Conc: 5.44 ng/ml

Instrument :
ECD_D
ClientSampleId :



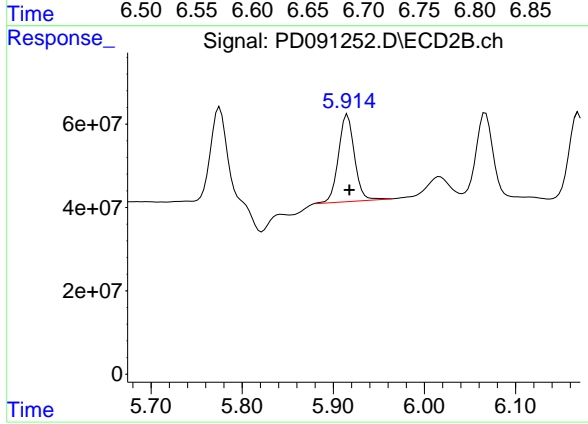
#15 Endosulfan II

R.T.: 6.067 min
Delta R.T.: -0.002 min
Response: 248841437
Conc: 5.33 ng/ml



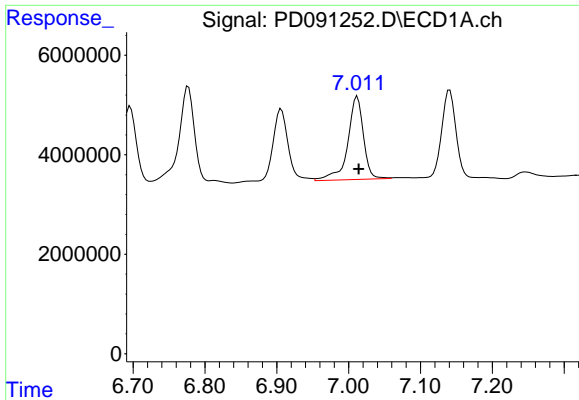
#16 4,4'-DDD

R.T.: 6.696 min
Delta R.T.: -0.002 min
Response: 21155590
Conc: 4.31 ng/ml



#16 4,4'-DDD

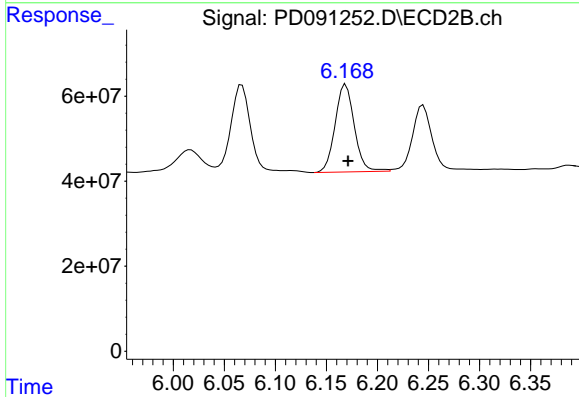
R.T.: 5.916 min
Delta R.T.: -0.002 min
Response: 254593915
Conc: 5.21 ng/ml



#17 4,4'-DDT

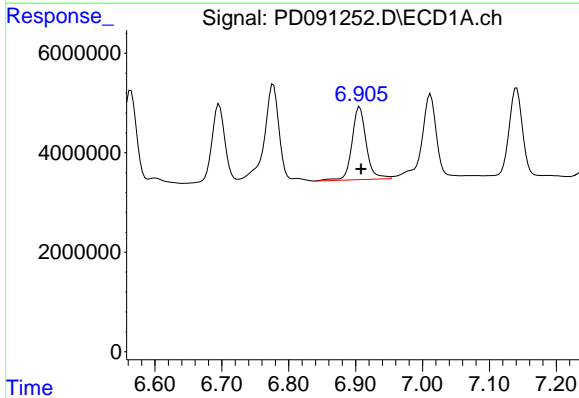
R.T.: 7.012 min
 Delta R.T.: -0.002 min
 Response: 25335229
 Conc: 6.13 ng/ml

Instrument :
 ECD_D
 ClientSampleId :



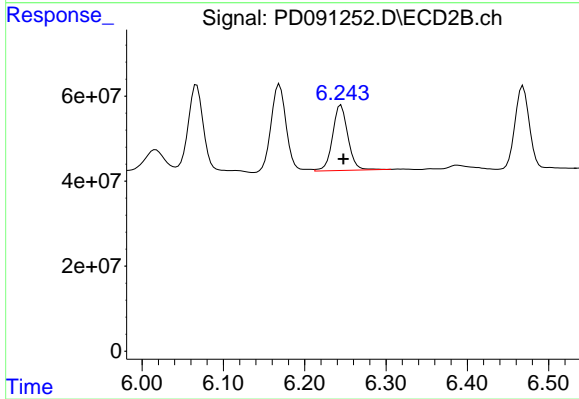
#17 4,4'-DDT

R.T.: 6.169 min
 Delta R.T.: -0.002 min
 Response: 269805442
 Conc: 6.89 ng/ml



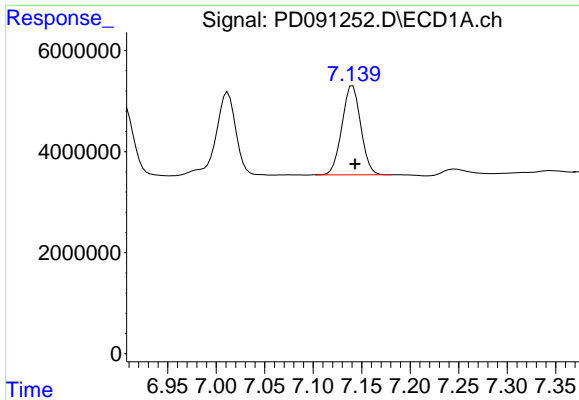
#18 Endrin aldehyde

R.T.: 6.906 min
 Delta R.T.: -0.002 min
 Response: 21767770
 Conc: 5.23 ng/ml



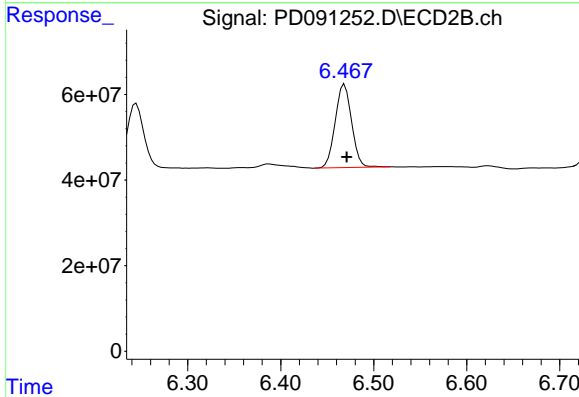
#18 Endrin aldehyde

R.T.: 6.245 min
 Delta R.T.: -0.003 min
 Response: 201072176
 Conc: 5.70 ng/ml

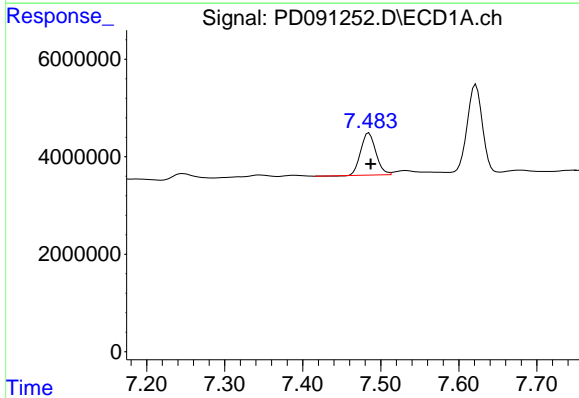


#19 Endosulfan Sulfate
 R.T.: 7.141 min
 Delta R.T.: -0.002 min
 Response: 23780786
 Conc: 4.62 ng/ml

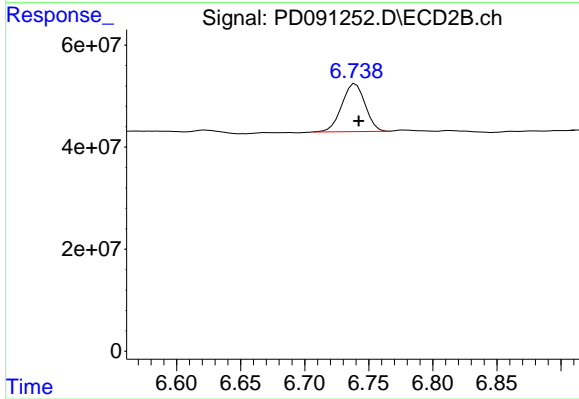
Instrument :
 ECD_D
 ClientSampleId :



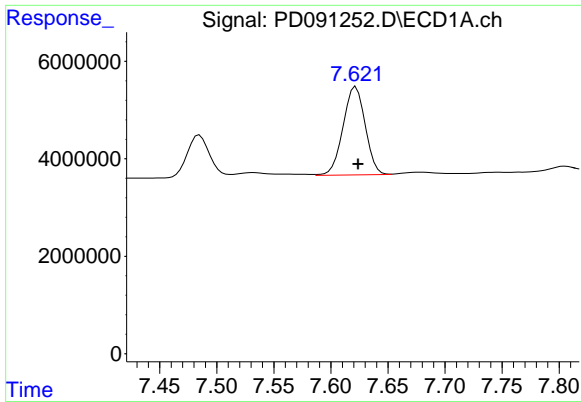
#19 Endosulfan Sulfate
 R.T.: 6.469 min
 Delta R.T.: -0.002 min
 Response: 238679249
 Conc: 5.32 ng/ml



#20 Methoxychlor
 R.T.: 7.485 min
 Delta R.T.: -0.002 min
 Response: 11606691
 Conc: 5.34 ng/ml



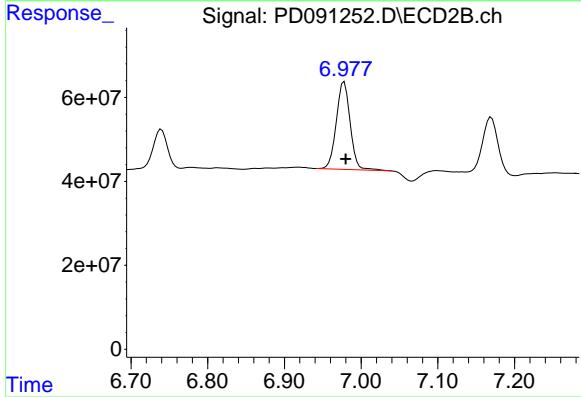
#20 Methoxychlor
 R.T.: 6.740 min
 Delta R.T.: -0.003 min
 Response: 118703606
 Conc: 5.92 ng/ml



#21 Endrin ketone

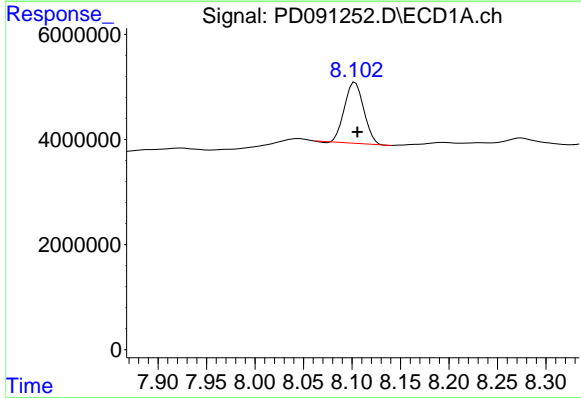
R.T.: 7.622 min
 Delta R.T.: -0.002 min
 Response: 24462476
 Conc: 4.34 ng/ml

Instrument :
 ECD_D
 ClientSampleId :



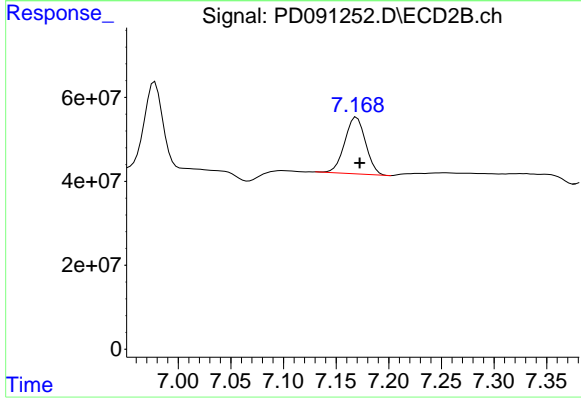
#21 Endrin ketone

R.T.: 6.978 min
 Delta R.T.: -0.002 min
 Response: 262638669
 Conc: 5.15 ng/ml



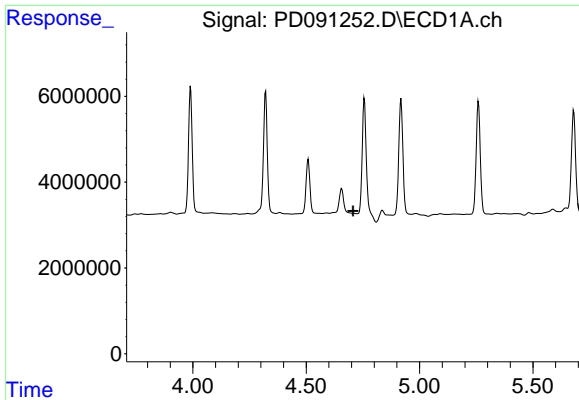
#22 Mirex

R.T.: 8.103 min
 Delta R.T.: -0.003 min
 Response: 16041817
 Conc: 4.51 ng/ml



#22 Mirex

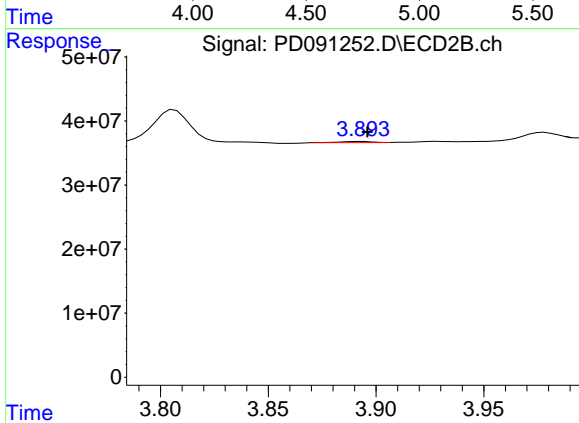
R.T.: 7.169 min
 Delta R.T.: -0.003 min
 Response: 187878192
 Conc: 5.67 ng/ml



#23 Chlordane-1

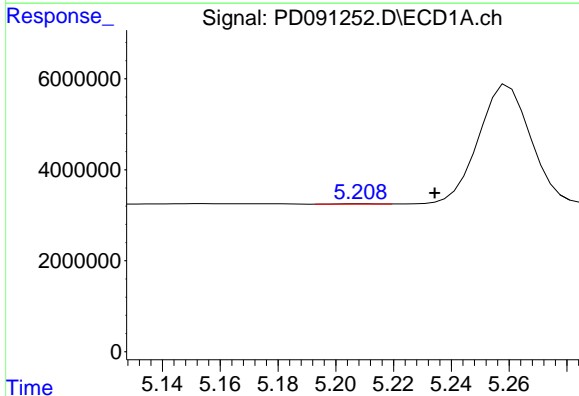
R.T.: 0.000 min
 Exp R.T.: 4.707 min
 Response: 0
 Conc: N.D.

Instrument :
 ECD_D
 ClientSampleId :



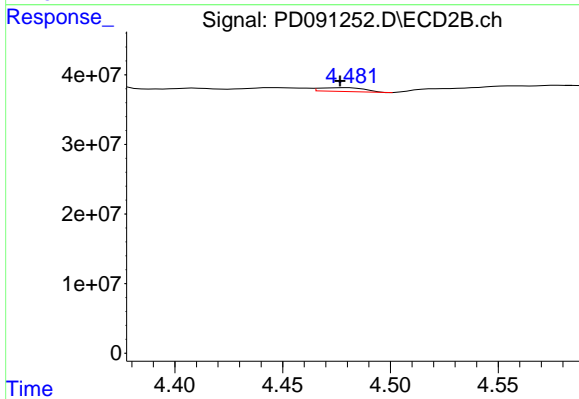
#23 Chlordane-1

R.T.: 3.894 min
 Delta R.T.: -0.002 min
 Response: 1787112
 Conc: 1.04 ng/ml



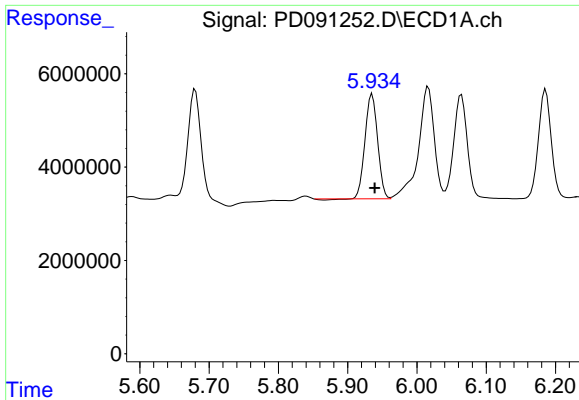
#24 Chlordane-2

R.T.: 5.209 min
 Delta R.T.: -0.025 min
 Response: 72738
 Conc: 0.29 ng/ml



#24 Chlordane-2

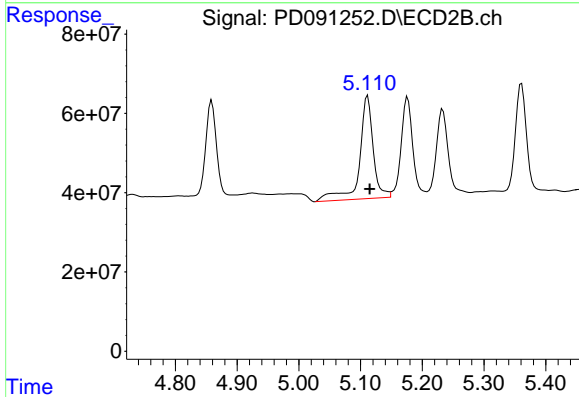
R.T.: 4.479 min
 Delta R.T.: 0.003 min
 Response: 7936180
 Conc: 4.53 ng/ml



#25 Chlordane-3

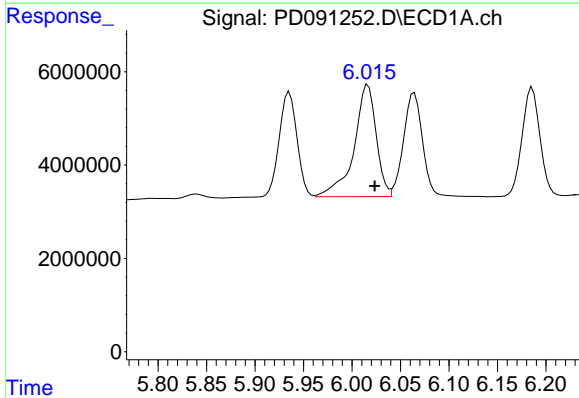
R.T.: 5.935 min
 Delta R.T.: -0.003 min
 Response: 28120999
 Conc: 29.15 ng/ml

Instrument :
 ECD_D
 ClientSampleId :



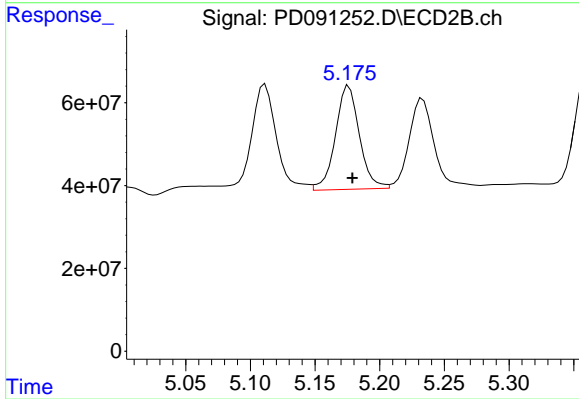
#25 Chlordane-3

R.T.: 5.111 min
 Delta R.T.: -0.003 min
 Response: 403838186
 Conc: 70.19 ng/ml



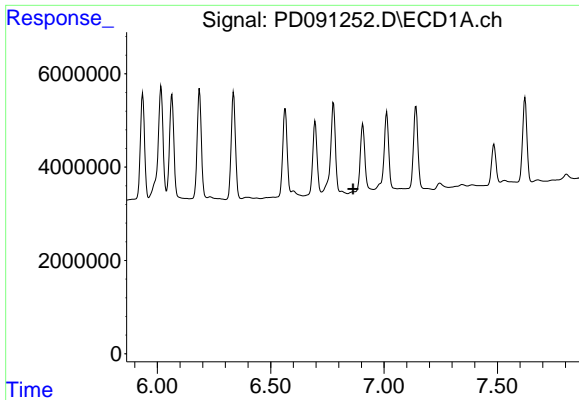
#26 Chlordane-4

R.T.: 6.016 min
 Delta R.T.: -0.007 min
 Response: 38122072
 Conc: 31.74 ng/ml



#26 Chlordane-4

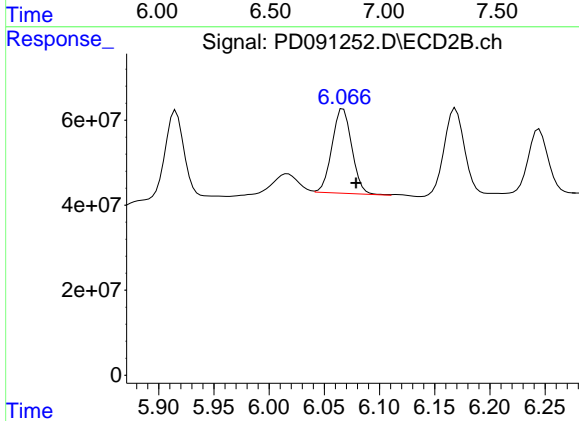
R.T.: 5.176 min
 Delta R.T.: -0.003 min
 Response: 322622903
 Conc: 67.44 ng/ml



#27 Chlordane-5

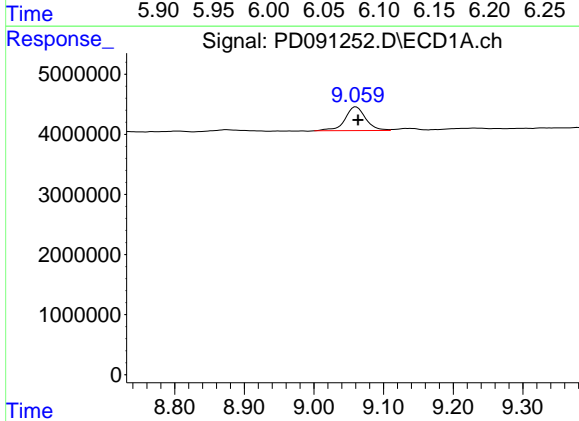
R.T.: 0.000 min
 Exp R.T.: 6.863 min
 Response: 0
 Conc: N.D.

Instrument :
 ECD_D
 ClientSampleId :



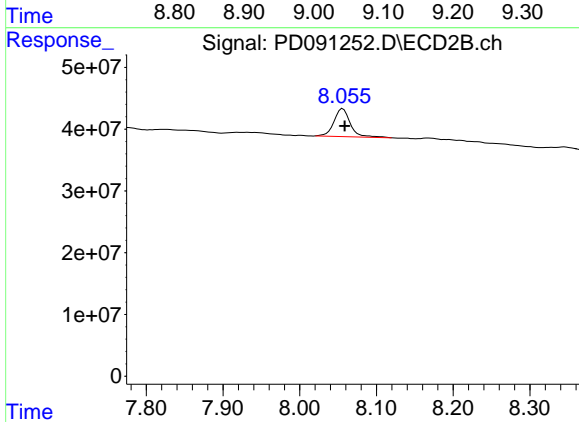
#27 Chlordane-5

R.T.: 6.067 min
 Delta R.T.: -0.012 min
 Response: 248841437
 Conc: 122.63 ng/ml



#28 Decachlorobiphenyl

R.T.: 9.060 min
 Delta R.T.: -0.003 min
 Response: 8142159
 Conc: 1.63 ng/ml



#28 Decachlorobiphenyl

R.T.: 8.056 min
 Delta R.T.: -0.003 min
 Response: 66783692
 Conc: 1.69 ng/ml