

Data Path : Z:\pestpcbsrv\HPCHEM1\ECD\_D\Data\PD111825\  
 Data File : PD091258.D  
 Signal(s) : Signal #1: ECD1A.ch Signal #2: ECD2B.ch  
 Acq On : 18 Nov 2025 16:52  
 Operator : AR\AJ  
 Sample : PB170610BL  
 Misc :  
 ALS Vial : 12 Sample Multiplier: 1

Instrument :  
 ECD\_D  
 ClientSampleId :

Integration File signal 1: autoint1.e  
 Integration File signal 2: autoint2.e  
 Quant Time: Nov 18 22:16:51 2025  
 Quant Method : Z:\pestpcbsrv\HPCHEM1\ECD\_D\Method\PD111525.M  
 Quant Title : GC Extractables  
 QLast Update : Sat Nov 15 04:46:13 2025  
 Response via : Initial Calibration  
 Integrator: ChemStation

Volume Inj. : 1 µl  
 Signal #1 Phase : ZB-MR2 Signal #2 Phase: ZB-MR2  
 Signal #1 Info : 30M x 0.32mm x0.5 Signal #2 Info : 30M x 0.32mm x 0.25µm

	Compound	RT#1	RT#2	Resp#1	Resp#2	ng/ml	ng/ml
-----							
System Monitoring Compounds							
1)	SA Tetrachlo...	3.541	2.871	69849988	795.4E6	20.254	21.715
28)	SA Decachlor...	9.061	8.056	102.4E6	846.3E6	20.551	21.386
Target Compounds							
2)	A alpha-BHC	0.000	3.375	0	3817219	N.D.	0.060 #
3)	MA gamma-BHC...	4.333	3.723	322378	1373685	0.043	0.024 #
4)	MA Heptachlor	4.946f	4.074	2772668	953726	0.387	0.017 #
5)	MB Aldrin	0.000	4.353	0	752115	N.D.	0.013 #
6)	B beta-BHC	0.000	4.021	0	1686773	N.D.	0.070 #
7)	B delta-BHC	4.769	4.245	4464814	868046	0.601	0.015 #
8)	B Heptachlo...	0.000	4.864	0	6210664	N.D.	0.122 #
9)	A Endosulfan I	6.059	5.226	182079	4538741	0.030	0.095 #
10)	B gamma-Chl...	0.000	5.125	0	5177061	N.D.	0.095 #
11)	B alpha-Chl...	5.991f	5.184	3123998	5853026	0.454	0.112 #
12)	B 4,4'-DDE	0.000	5.362	0	1653002	N.D.	0.031 #
13)	MA Dieldrin	0.000	5.501	0	950399	N.D.	0.017 #
14)	MA Endrin	0.000	5.782	0	2351781	N.D.	0.052 #
15)	B Endosulfa...	6.761f	6.071	7208706	508842	1.297	0.011 #
17)	MA 4,4'-DDT	7.036f	6.173	16139	1148266	0.004	0.029 #
18)	B Endrin al...	0.000	6.251	0	5846053	N.D.	0.166 #
19)	B Endosulfa...	7.156	6.464	82953	1955270	0.016	0.044 #
20)	A Methoxychlor	7.495	6.738	289522	798366	0.133	0.040 #
21)	B Endrin ke...	0.000	6.998f	0	1262690	N.D.	0.025 #
22)	Mirex	0.000	7.166	0	1226386	N.D.	0.037 #
24)	Chlordane-2	0.000	4.489	0	565208	N.D.	0.323 #
25)	Chlordane-3	0.000	5.125	0	5177061	N.D.	0.900 #
26)	Chlordane-4	0.000	5.184	0	5853026	N.D.	1.224 #
27)	Chlordane-5	0.000	6.071	0	508842	N.D.	0.251 #

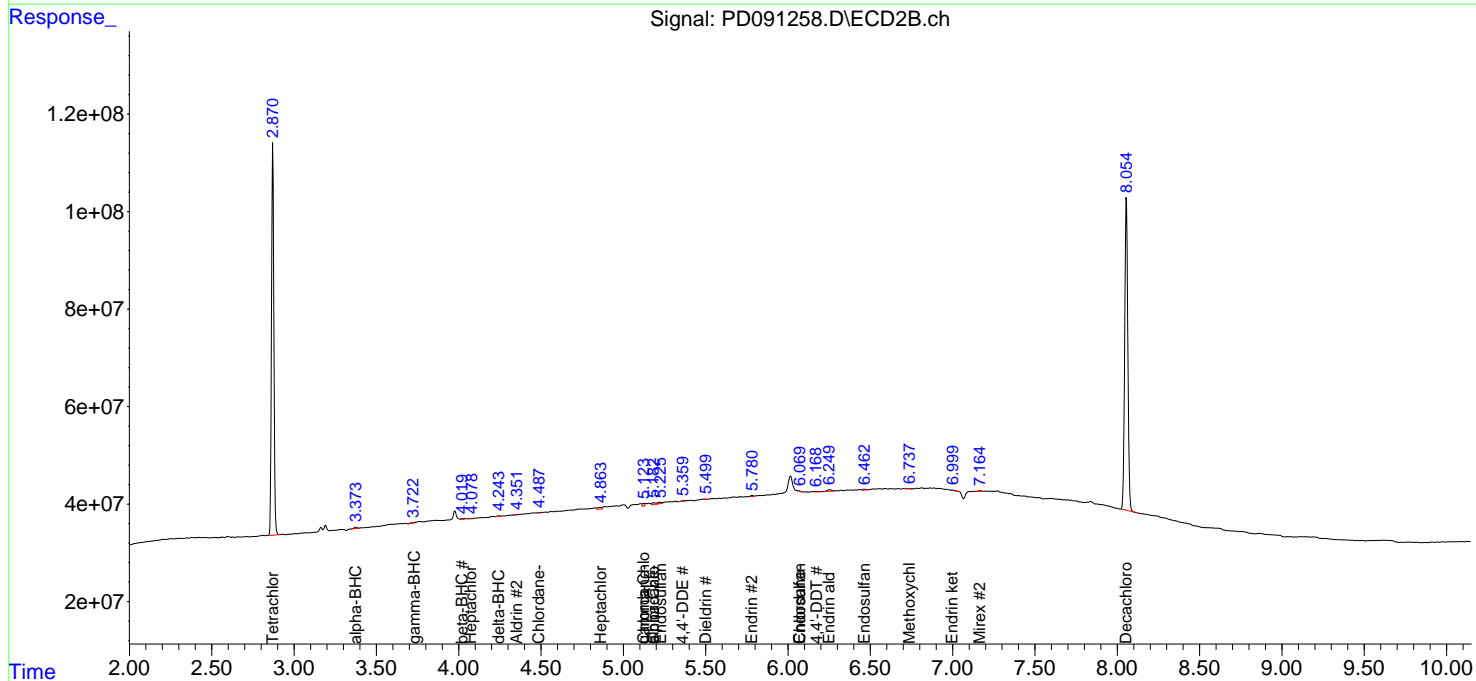
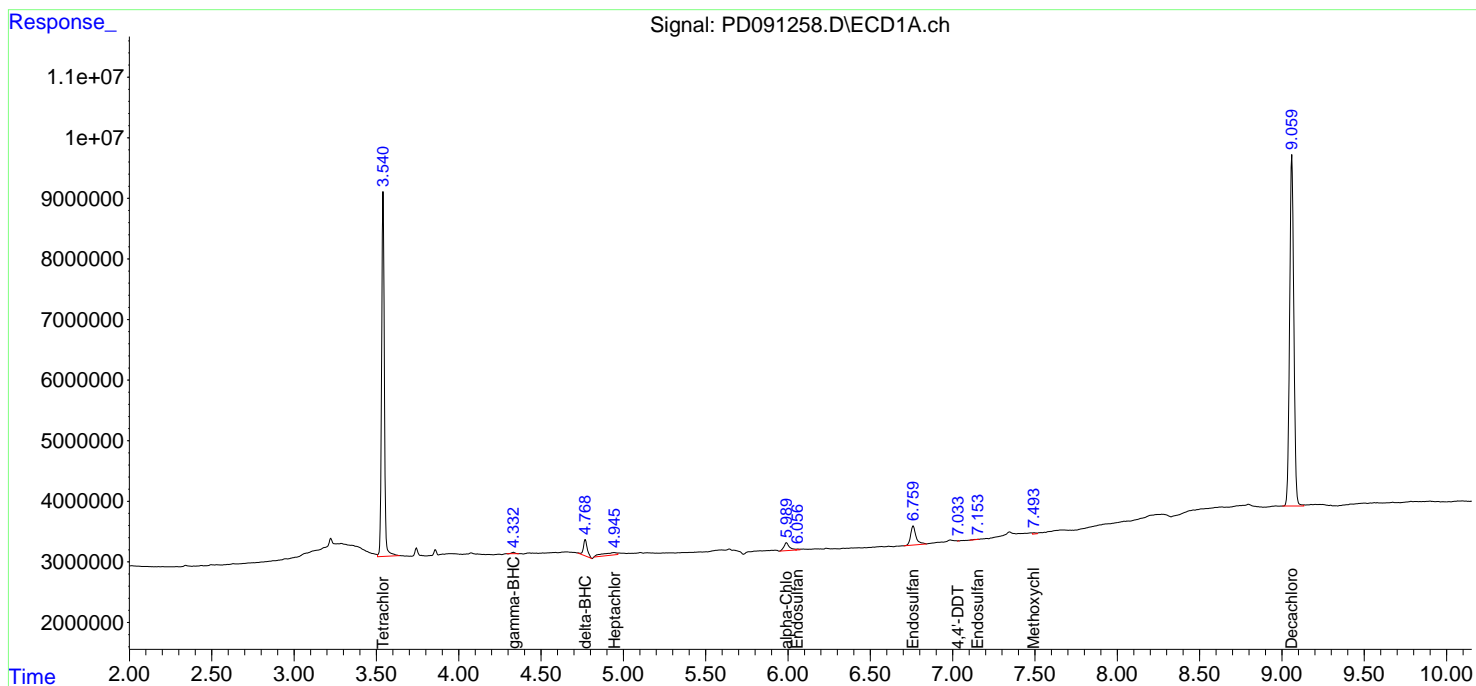
(f)=RT Delta > 1/2 Window (#)=Amounts differ by > 25% (m)=manual int.

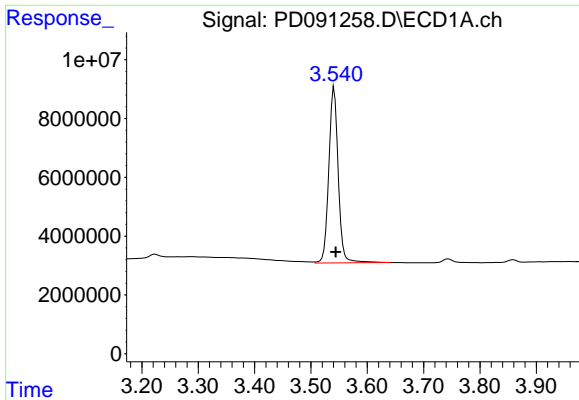
Data Path : Z:\pestpcbsrv\HPCHEM1\ECD\_D\Data\PD111825\  
 Data File : PD091258.D  
 Signal(s) : Signal #1: ECD1A.ch Signal #2: ECD2B.ch  
 Acq On : 18 Nov 2025 16:52  
 Operator : AR\AJ  
 Sample : PB170610BL  
 Misc :  
 ALS Vial : 12 Sample Multiplier: 1

Instrument :  
 ECD\_D  
 ClientSampleId :

Integration File signal 1: autoint1.e  
 Integration File signal 2: autoint2.e  
 Quant Time: Nov 18 22:16:51 2025  
 Quant Method : Z:\pestpcbsrv\HPCHEM1\ECD\_D\Method\PD111525.M  
 Quant Title : GC Extractables  
 QLast Update : Sat Nov 15 04:46:13 2025  
 Response via : Initial Calibration  
 Integrator: ChemStation

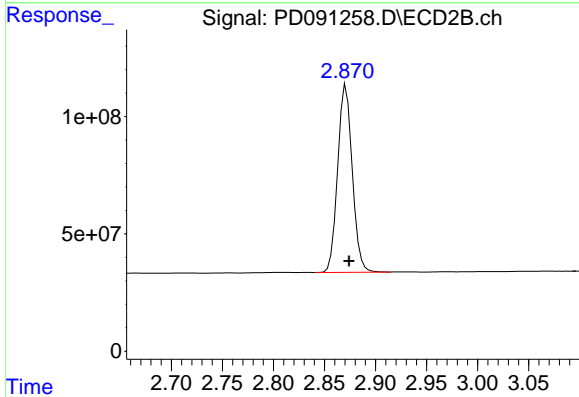
Volume Inj. : 1 µl  
 Signal #1 Phase : ZB-MR1 Signal #2 Phase: ZB-MR2  
 Signal #1 Info : 30M x 0.32mm x0.5 Signal #2 Info : 30M x 0.32mm x 0.25µm



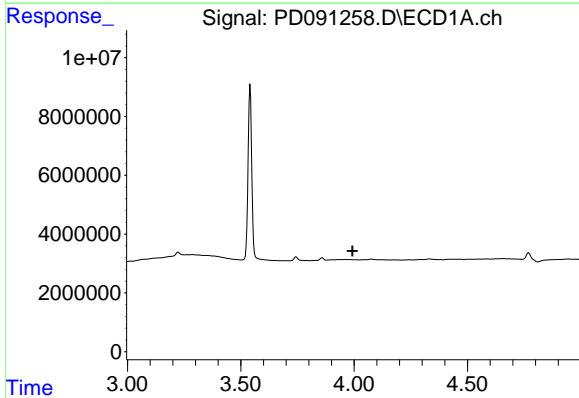


#1 Tetrachloro-m-xylene  
 R.T.: 3.541 min  
 Delta R.T.: -0.003 min  
 Response: 69849988  
 Conc: 20.25 ng/ml

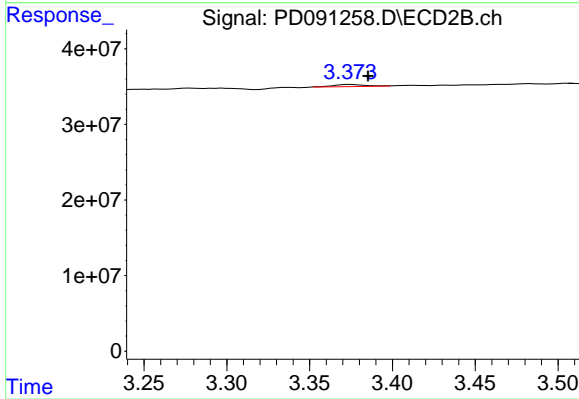
Instrument :  
 ECD\_D  
 ClientSampleId :



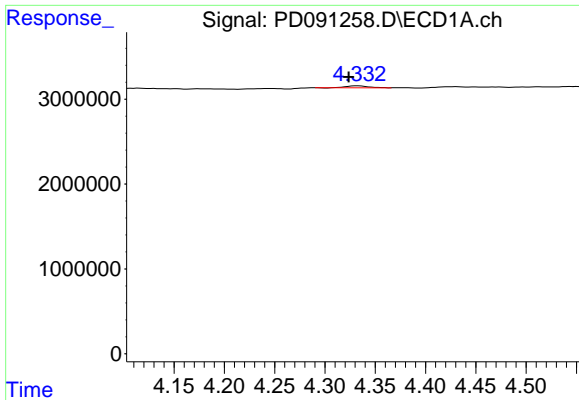
#1 Tetrachloro-m-xylene  
 R.T.: 2.871 min  
 Delta R.T.: -0.003 min  
 Response: 795422241  
 Conc: 21.71 ng/ml



#2 alpha-BHC  
 R.T.: 0.000 min  
 Exp R.T. : 3.993 min  
 Response: 0  
 Conc: N.D.



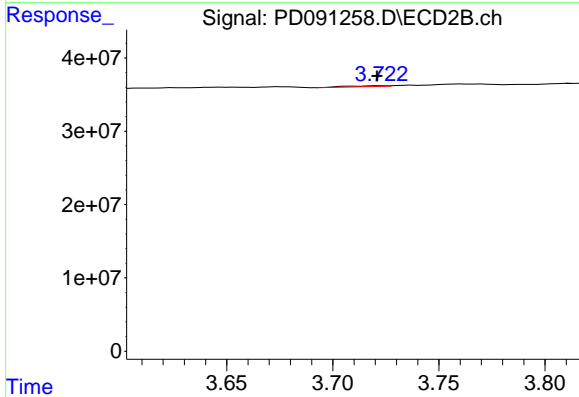
#2 alpha-BHC  
 R.T.: 3.375 min  
 Delta R.T.: -0.011 min  
 Response: 3817219  
 Conc: 0.06 ng/ml



#3 gamma-BHC (Lindane)

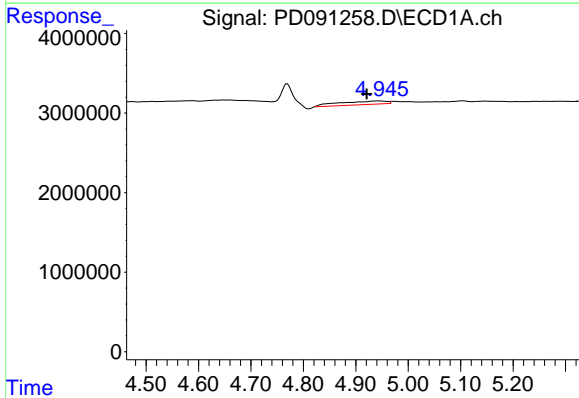
R.T.: 4.333 min  
 Delta R.T.: 0.009 min  
 Response: 322378  
 Conc: 0.04 ng/ml

Instrument :  
 ECD\_D  
 ClientSampleId :



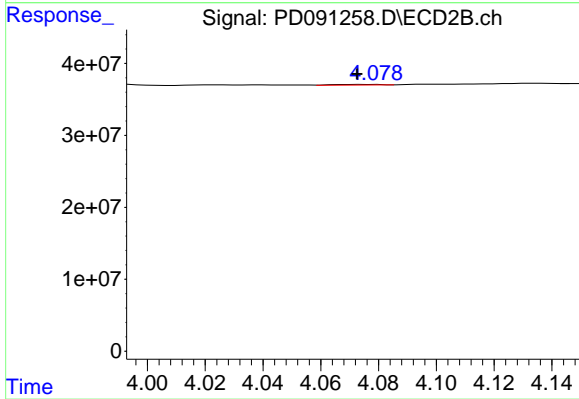
#3 gamma-BHC (Lindane)

R.T.: 3.723 min  
 Delta R.T.: 0.002 min  
 Response: 1373685  
 Conc: 0.02 ng/ml



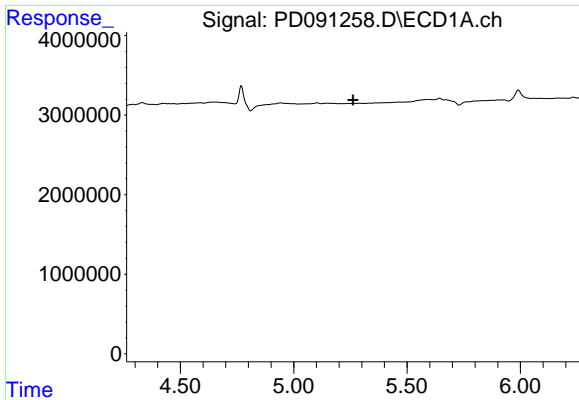
#4 Heptachlor

R.T.: 4.946 min  
 Delta R.T.: 0.025 min  
 Response: 2772668  
 Conc: 0.39 ng/ml



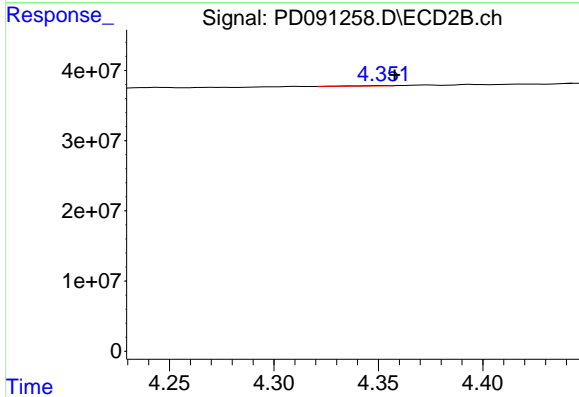
#4 Heptachlor

R.T.: 4.074 min  
 Delta R.T.: 0.001 min  
 Response: 953726  
 Conc: 0.02 ng/ml

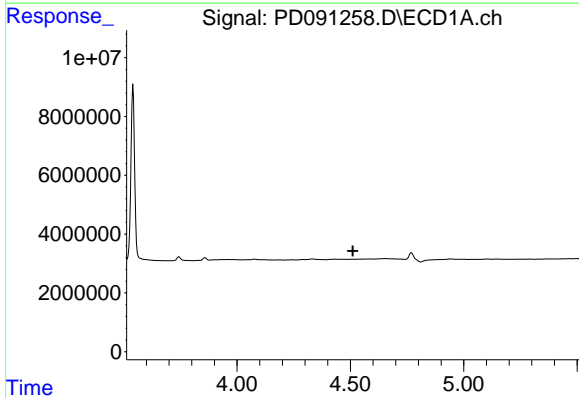


#5 Aldrin  
 R.T.: 0.000 min  
 Exp R.T.: 5.262 min  
 Response: 0  
 Conc: N.D.

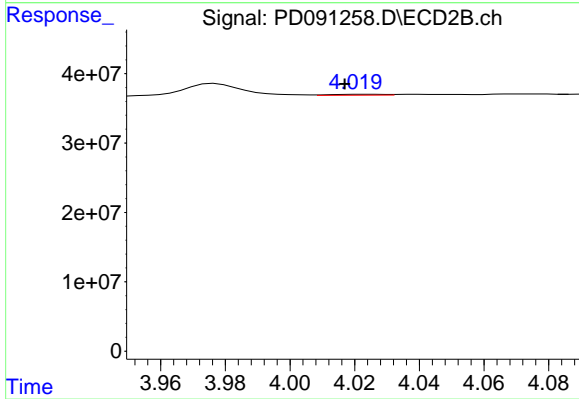
Instrument :  
 ECD\_D  
 ClientSampleId :



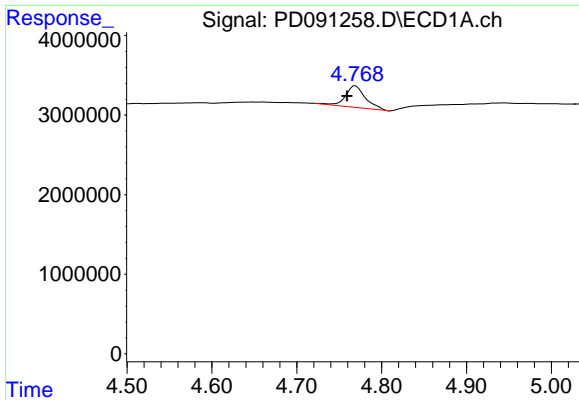
#5 Aldrin  
 R.T.: 4.353 min  
 Delta R.T.: -0.005 min  
 Response: 752115  
 Conc: 0.01 ng/ml



#6 beta-BHC  
 R.T.: 0.000 min  
 Exp R.T.: 4.511 min  
 Response: 0  
 Conc: N.D.



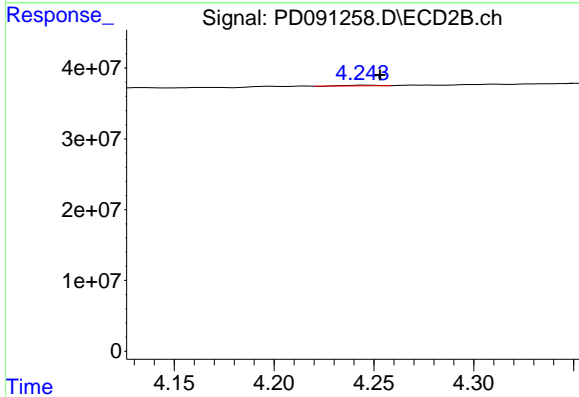
#6 beta-BHC  
 R.T.: 4.021 min  
 Delta R.T.: 0.004 min  
 Response: 1686773  
 Conc: 0.07 ng/ml



#7 delta-BHC

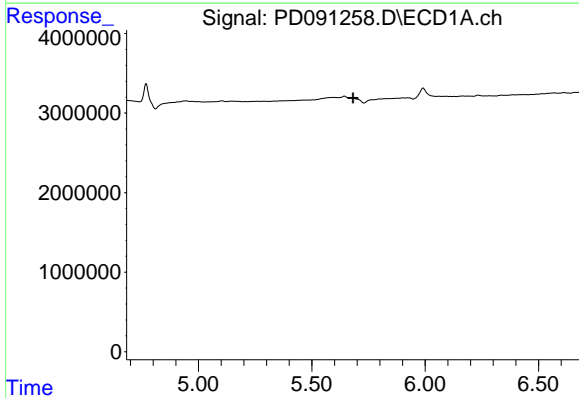
R.T.: 4.769 min  
 Delta R.T.: 0.010 min  
 Response: 4464814  
 Conc: 0.60 ng/ml

Instrument :  
 ECD\_D  
 ClientSampleId :



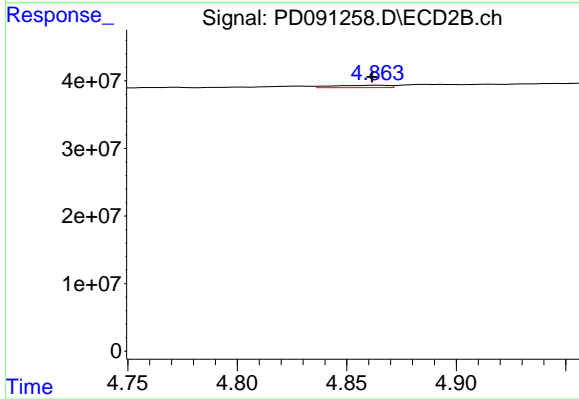
#7 delta-BHC

R.T.: 4.245 min  
 Delta R.T.: -0.008 min  
 Response: 868046  
 Conc: 0.01 ng/ml



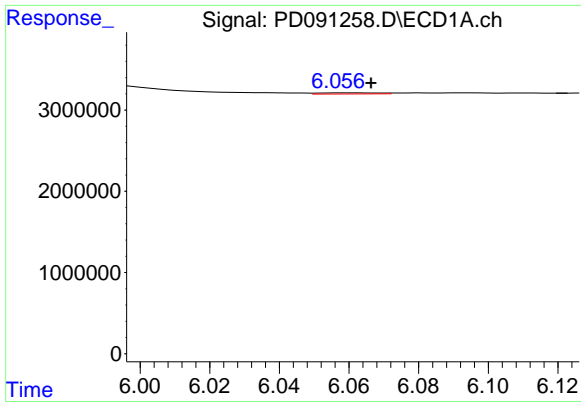
#8 Heptachlor epoxide

R.T.: 0.000 min  
 Exp R.T. : 5.683 min  
 Response: 0  
 Conc: N.D.



#8 Heptachlor epoxide

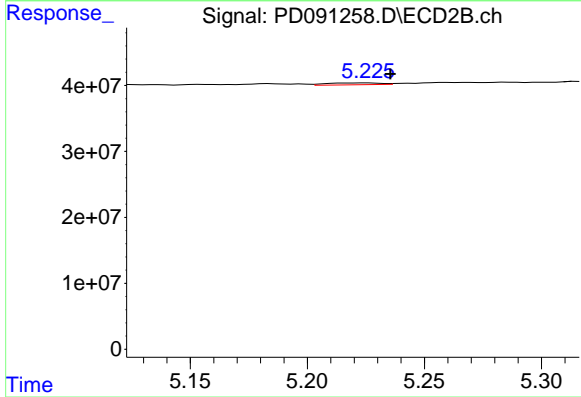
R.T.: 4.864 min  
 Delta R.T.: 0.002 min  
 Response: 6210664  
 Conc: 0.12 ng/ml



#9 Endosulfan I

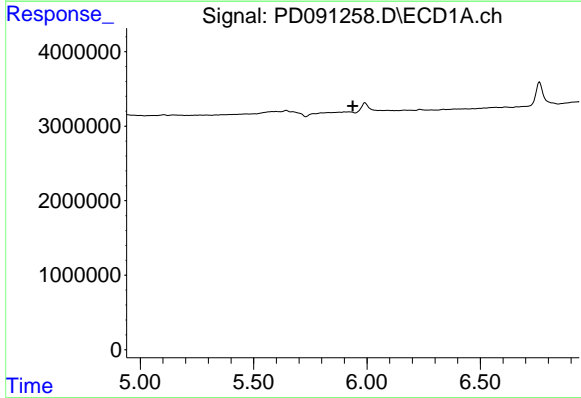
R.T.: 6.059 min  
 Delta R.T.: -0.007 min  
 Response: 182079  
 Conc: 0.03 ng/ml

Instrument :  
 ECD\_D  
 ClientSampleId :



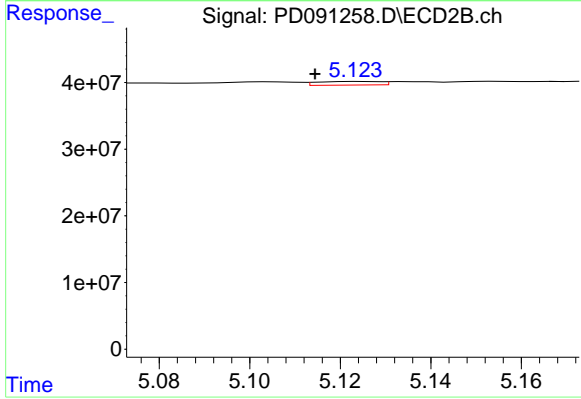
#9 Endosulfan I

R.T.: 5.226 min  
 Delta R.T.: -0.010 min  
 Response: 4538741  
 Conc: 0.09 ng/ml



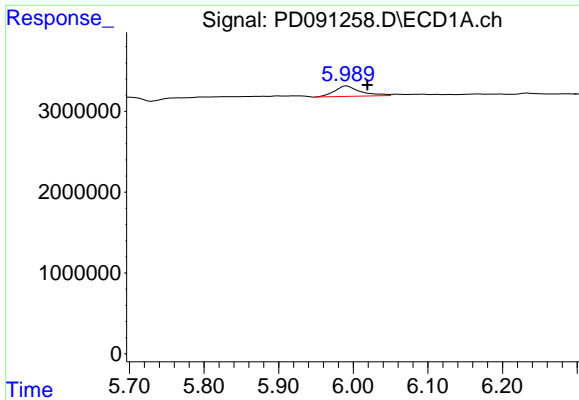
#10 gamma-Chlordane

R.T.: 0.000 min  
 Exp R.T. : 5.938 min  
 Response: 0  
 Conc: N.D.



#10 gamma-Chlordane

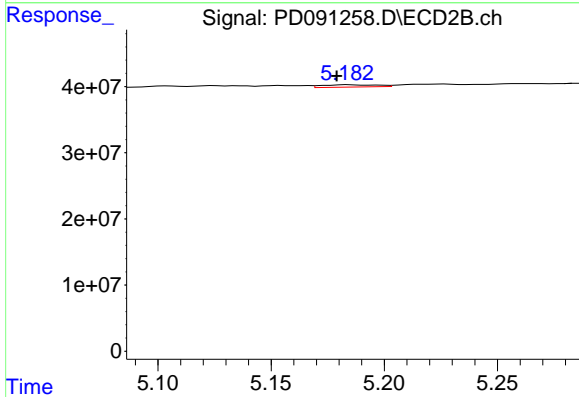
R.T.: 5.125 min  
 Delta R.T.: 0.010 min  
 Response: 5177061  
 Conc: 0.09 ng/ml



#11 alpha-Chlordane

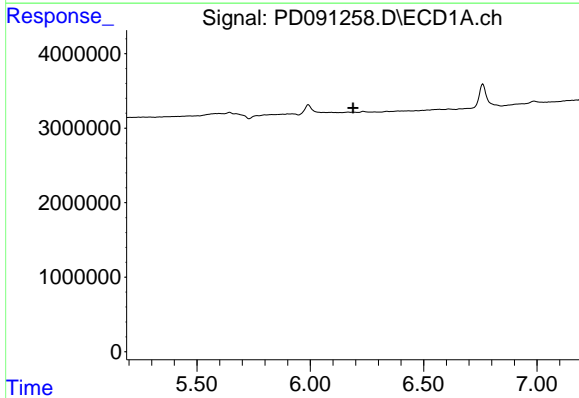
R.T.: 5.991 min  
 Delta R.T.: -0.028 min  
 Response: 3123998  
 Conc: 0.45 ng/ml

Instrument :  
 ECD\_D  
 ClientSampleId :



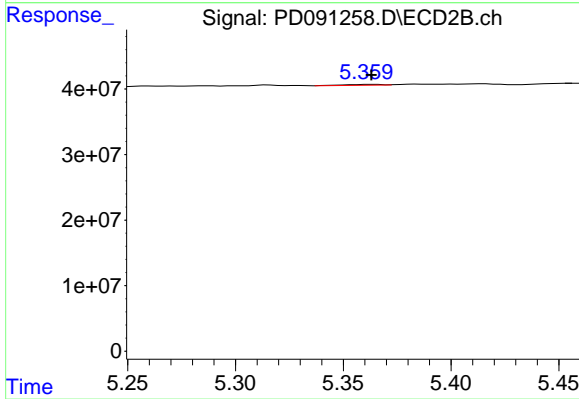
#11 alpha-Chlordane

R.T.: 5.184 min  
 Delta R.T.: 0.005 min  
 Response: 5853026  
 Conc: 0.11 ng/ml



#12 4,4'-DDE

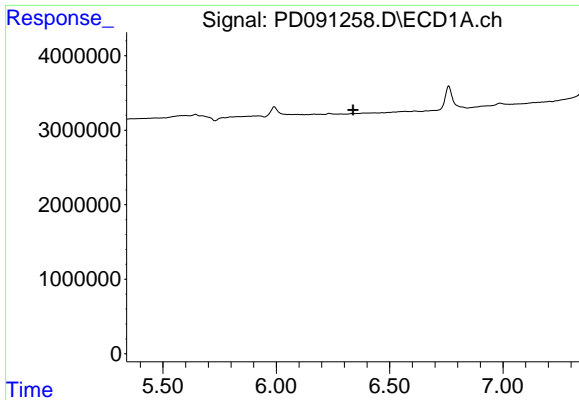
R.T.: 0.000 min  
 Exp R.T. : 6.189 min  
 Response: 0  
 Conc: N.D.



#12 4,4'-DDE

R.T.: 5.362 min  
 Delta R.T.: 0.000 min  
 Response: 1653002  
 Conc: 0.03 ng/ml

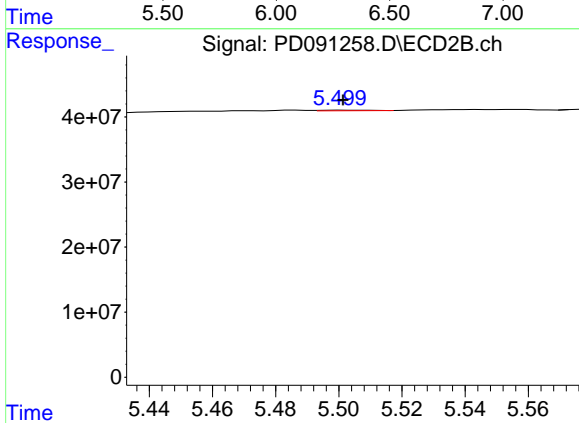




#13 Dieldrin

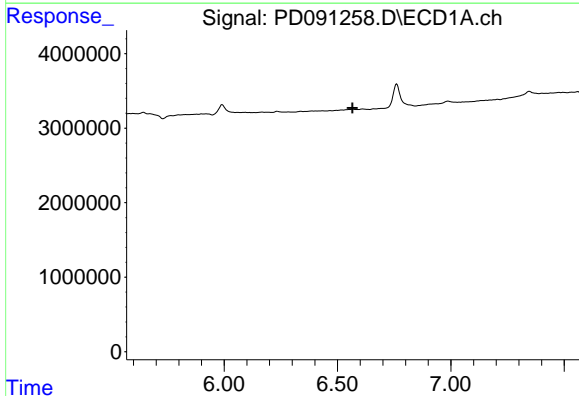
R.T.: 0.000 min  
 Exp R.T. : 6.339 min  
 Response: 0  
 Conc: N.D.

Instrument :  
 ECD\_D  
 ClientSampleId :



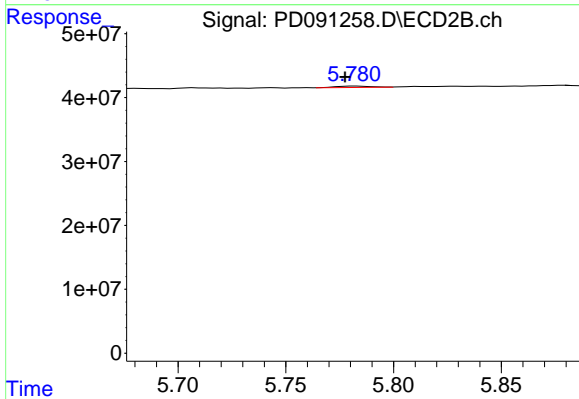
#13 Dieldrin

R.T.: 5.501 min  
 Delta R.T.: 0.000 min  
 Response: 950399  
 Conc: 0.02 ng/ml



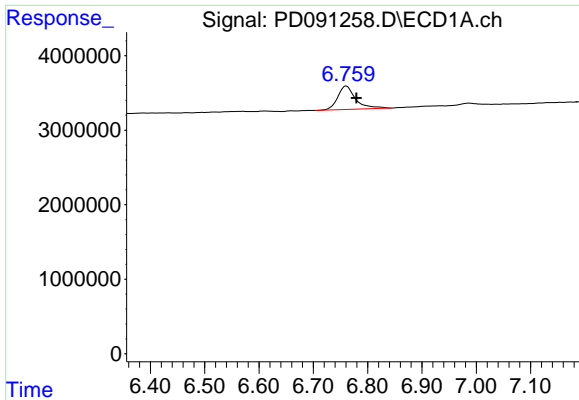
#14 Endrin

R.T.: 0.000 min  
 Exp R.T. : 6.566 min  
 Response: 0  
 Conc: N.D.



#14 Endrin

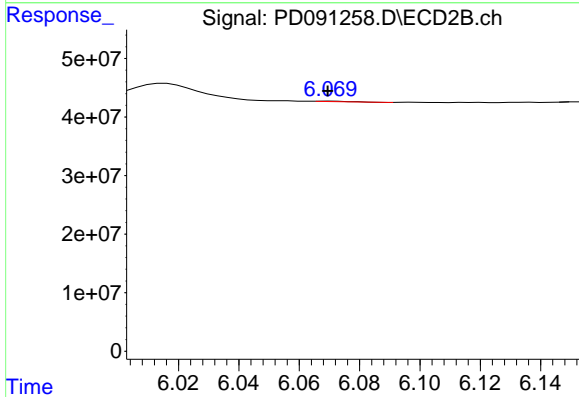
R.T.: 5.782 min  
 Delta R.T.: 0.005 min  
 Response: 2351781  
 Conc: 0.05 ng/ml



#15 Endosulfan II

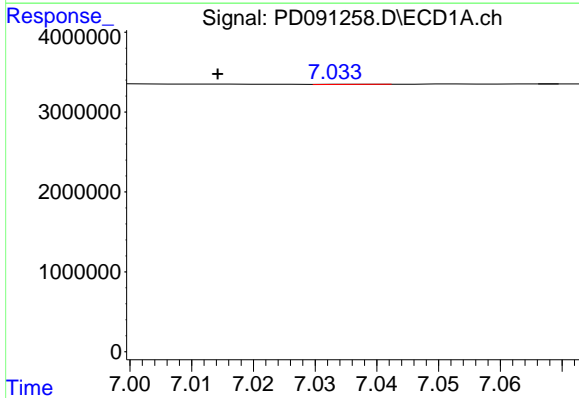
R.T.: 6.761 min  
 Delta R.T.: -0.018 min  
 Response: 7208706  
 Conc: 1.30 ng/ml

Instrument :  
 ECD\_D  
 ClientSampleId :



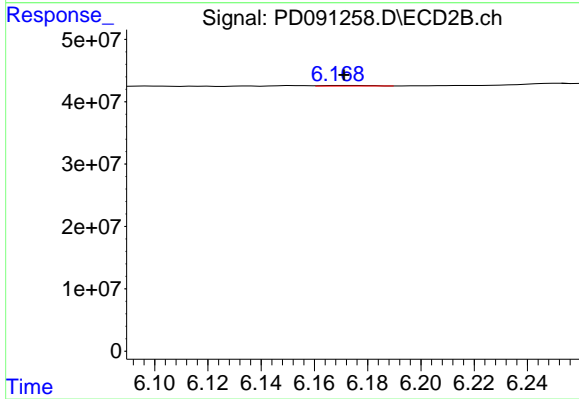
#15 Endosulfan II

R.T.: 6.071 min  
 Delta R.T.: 0.001 min  
 Response: 508842  
 Conc: 0.01 ng/ml



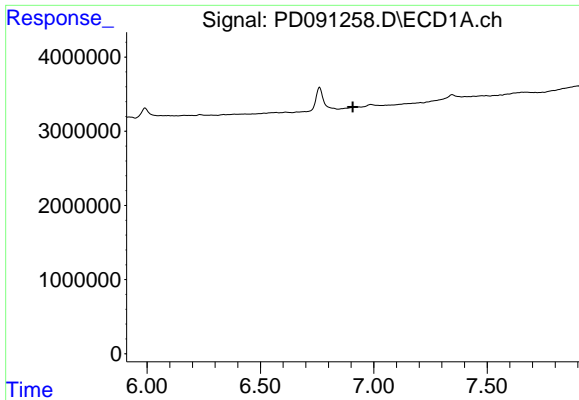
#17 4,4'-DDT

R.T.: 7.036 min  
 Delta R.T.: 0.022 min  
 Response: 16139  
 Conc: 0.00 ng/ml



#17 4,4'-DDT

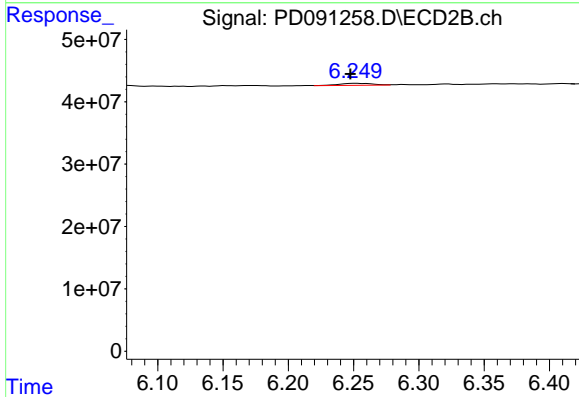
R.T.: 6.173 min  
 Delta R.T.: 0.002 min  
 Response: 1148266  
 Conc: 0.03 ng/ml



#18 Endrin aldehyde

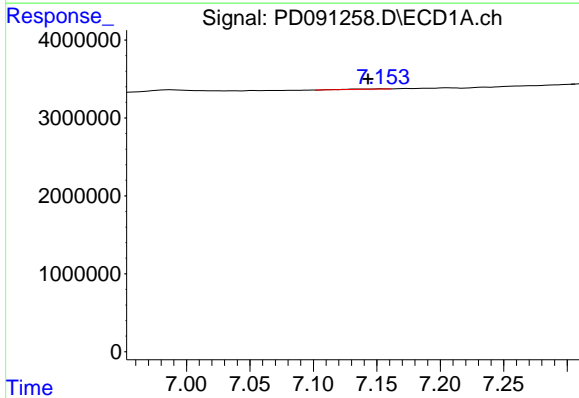
R.T.: 0.000 min  
 Exp R.T.: 6.908 min  
 Response: 0  
 Conc: N.D.

Instrument :  
 ECD\_D  
 ClientSampleId :



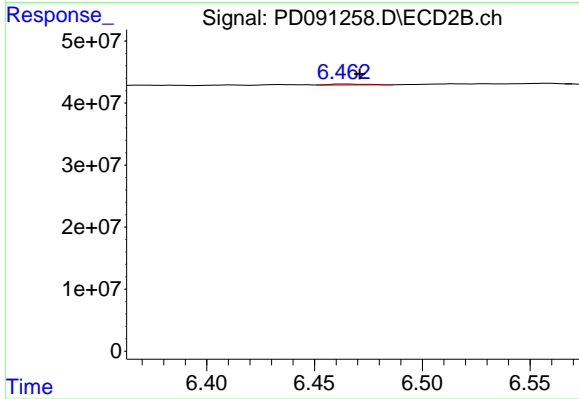
#18 Endrin aldehyde

R.T.: 6.251 min  
 Delta R.T.: 0.003 min  
 Response: 5846053  
 Conc: 0.17 ng/ml



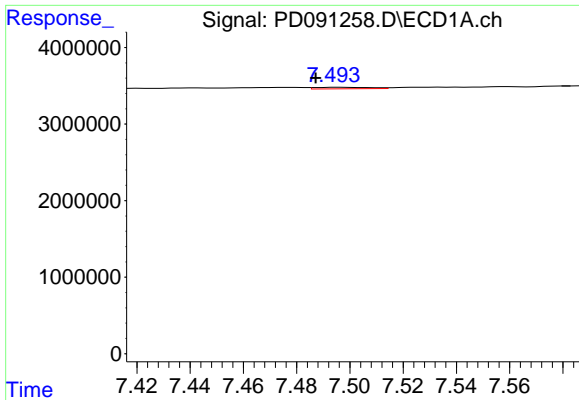
#19 Endosulfan Sulfate

R.T.: 7.156 min  
 Delta R.T.: 0.012 min  
 Response: 82953  
 Conc: 0.02 ng/ml



#19 Endosulfan Sulfate

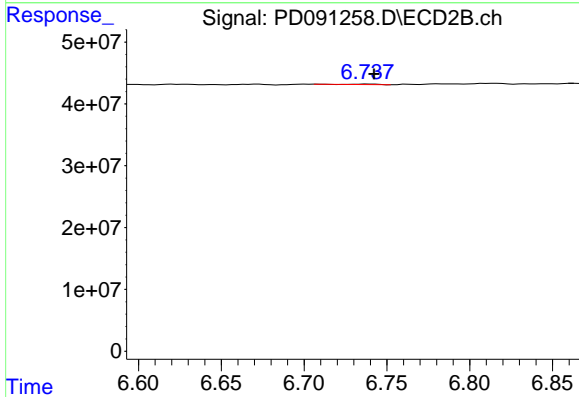
R.T.: 6.464 min  
 Delta R.T.: -0.007 min  
 Response: 1955270  
 Conc: 0.04 ng/ml



#20 Methoxychlor

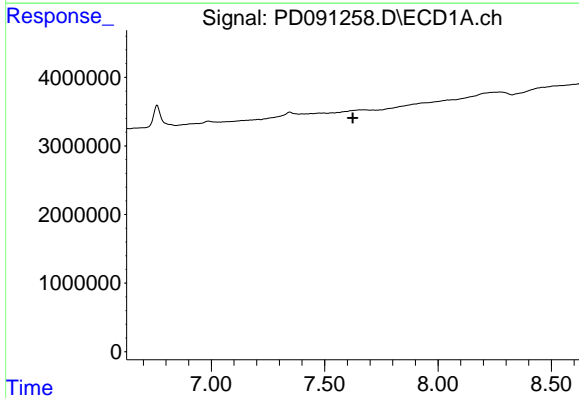
R.T.: 7.495 min  
 Delta R.T.: 0.008 min  
 Response: 289522  
 Conc: 0.13 ng/ml

Instrument :  
 ECD\_D  
 ClientSampleId :



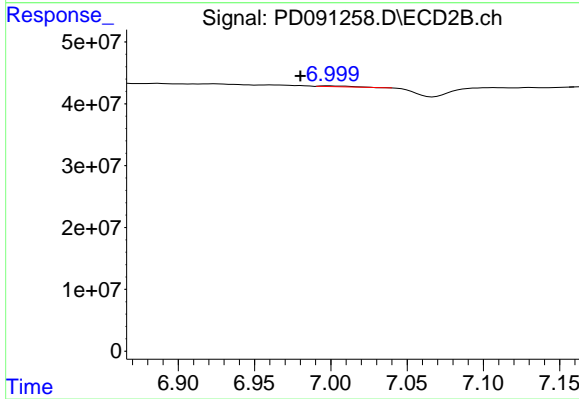
#20 Methoxychlor

R.T.: 6.738 min  
 Delta R.T.: -0.004 min  
 Response: 798366  
 Conc: 0.04 ng/ml



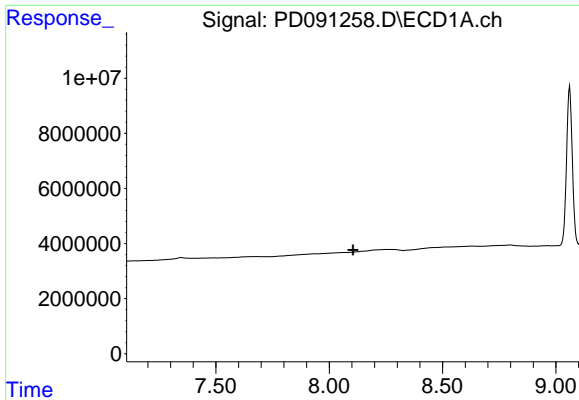
#21 Endrin ketone

R.T.: 0.000 min  
 Exp R.T. : 7.624 min  
 Response: 0  
 Conc: N.D.



#21 Endrin ketone

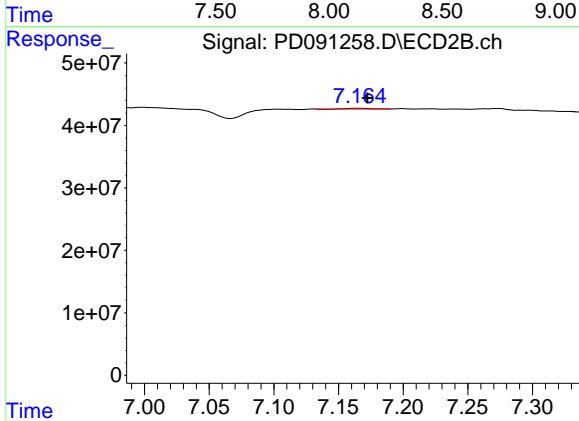
R.T.: 6.998 min  
 Delta R.T.: 0.018 min  
 Response: 1262690  
 Conc: 0.02 ng/ml



#22 Mirex

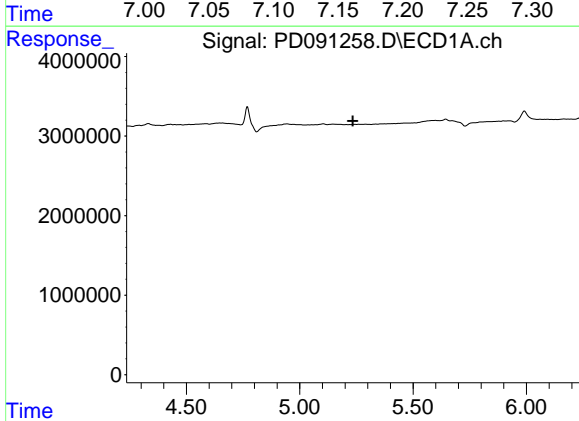
R.T.: 0.000 min  
 Exp R.T.: 8.106 min  
 Response: 0  
 Conc: N.D.

Instrument :  
 ECD\_D  
 ClientSampleId :



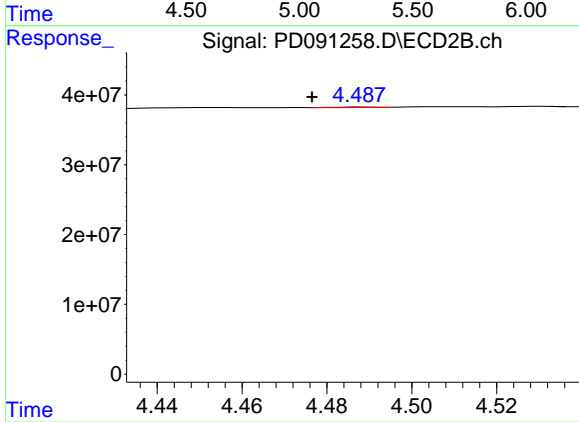
#22 Mirex

R.T.: 7.166 min  
 Delta R.T.: -0.006 min  
 Response: 1226386  
 Conc: 0.04 ng/ml



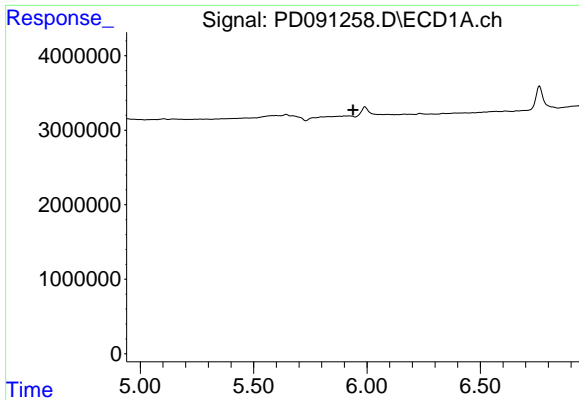
#24 Chlordane-2

R.T.: 0.000 min  
 Exp R.T.: 5.234 min  
 Response: 0  
 Conc: N.D.



#24 Chlordane-2

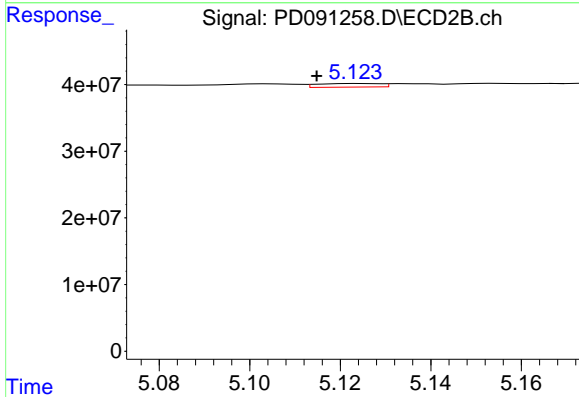
R.T.: 4.489 min  
 Delta R.T.: 0.012 min  
 Response: 565208  
 Conc: 0.32 ng/ml



#25 Chlordane-3

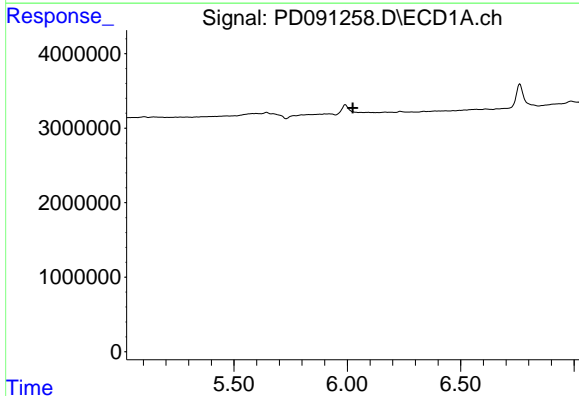
R.T.: 0.000 min  
 Exp R.T. : 5.939 min  
 Response: 0  
 Conc: N.D.

Instrument :  
 ECD\_D  
 ClientSampleId :



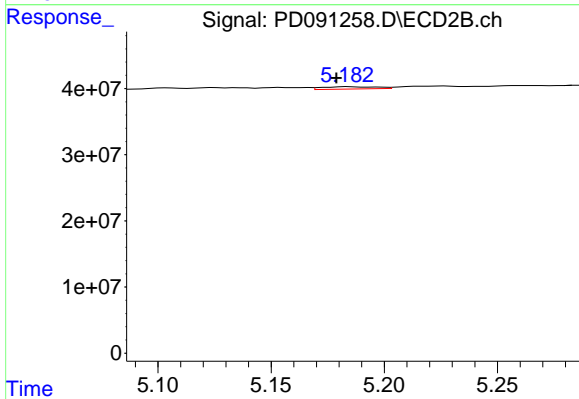
#25 Chlordane-3

R.T.: 5.125 min  
 Delta R.T.: 0.010 min  
 Response: 5177061  
 Conc: 0.90 ng/ml



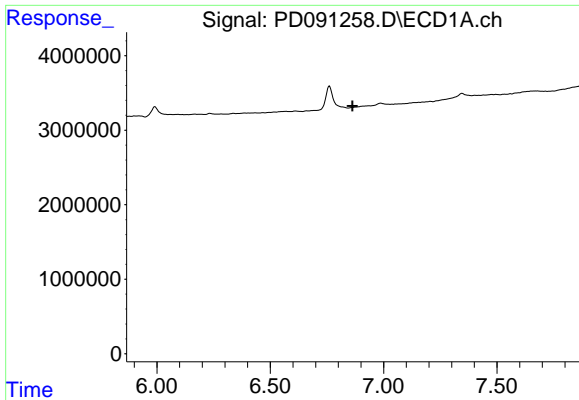
#26 Chlordane-4

R.T.: 0.000 min  
 Exp R.T. : 6.024 min  
 Response: 0  
 Conc: N.D.



#26 Chlordane-4

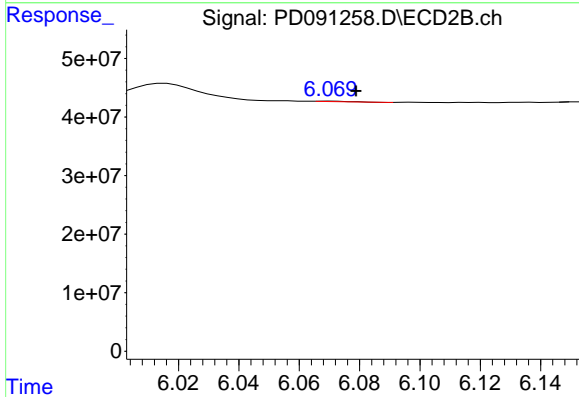
R.T.: 5.184 min  
 Delta R.T.: 0.005 min  
 Response: 5853026  
 Conc: 1.22 ng/ml



#27 Chlordane-5

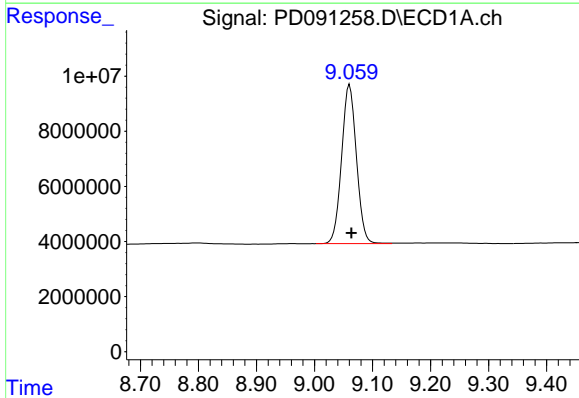
R.T.: 0.000 min  
 Exp R.T.: 6.863 min  
 Response: 0  
 Conc: N.D.

Instrument :  
 ECD\_D  
 ClientSampleId :



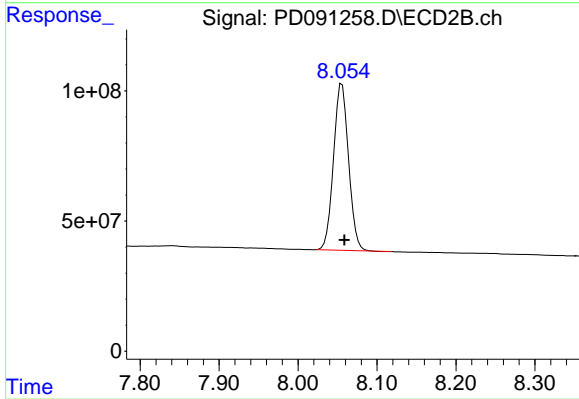
#27 Chlordane-5

R.T.: 6.071 min  
 Delta R.T.: -0.008 min  
 Response: 508842  
 Conc: 0.25 ng/ml



#28 Decachlorobiphenyl

R.T.: 9.061 min  
 Delta R.T.: -0.003 min  
 Response: 102380121  
 Conc: 20.55 ng/ml



#28 Decachlorobiphenyl

R.T.: 8.056 min  
 Delta R.T.: -0.003 min  
 Response: 846345622  
 Conc: 21.39 ng/ml