

Data Path : Z:\pestpcbsrv\HPCHEM1\ECD\_D\Data\PD111825\  
 Data File : PD091260.D  
 Signal(s) : Signal #1: ECD1A.ch Signal #2: ECD2B.ch  
 Acq On : 18 Nov 2025 17:19  
 Operator : AR\AJ  
 Sample : Q3660-01  
 Misc :  
 ALS Vial : 14 Sample Multiplier: 1

Instrument :  
 ECD\_D  
 ClientSampleId :

Integration File signal 1: autoint1.e  
 Integration File signal 2: autoint2.e  
 Quant Time: Nov 18 22:17:24 2025  
 Quant Method : Z:\pestpcbsrv\HPCHEM1\ECD\_D\Method\PD111525.M  
 Quant Title : GC Extractables  
 QLast Update : Sat Nov 15 04:46:13 2025  
 Response via : Initial Calibration  
 Integrator: ChemStation

Volume Inj. : 1 µl  
 Signal #1 Phase : ZB-MR1 Signal #2 Phase: ZB-MR2  
 Signal #1 Info : 30M x 0.32mm x0.5 Signal #2 Info : 30M x 0.32mm x 0.25µm

	Compound	RT#1	RT#2	Resp#1	Resp#2	ng/ml	ng/ml
-----							
System Monitoring Compounds							
1)	SA Tetrachlo...	3.541	2.871	70979265	810.9E6	20.582	22.138
28)	SA Decachlor...	9.060	8.056	108.0E6	906.5E6	21.671	22.905
Target Compounds							
2)	A alpha-BHC	3.991	3.383	365.0E6	2987.9E6	45.649	47.274
3)	MA gamma-BHC...	4.322	3.719	342.5E6	2762.9E6	45.838	47.784
4)	MA Heptachlor	4.919	4.070	337.1E6	2703.7E6	47.073	48.972
5)	MB Aldrin	5.260	4.355	327.4E6	2715.7E6	45.119	48.100
6)	B beta-BHC	4.509	4.015	128.3E6	1134.9E6	44.145	47.235
7)	B delta-BHC	4.757	4.251	344.6E6	2795.7E6	46.364	47.808
8)	B Heptachlo...	5.680	4.859	294.3E6	2478.0E6	45.293	48.628
9)	A Endosulfan I	6.064	5.233	276.0E6	2260.2E6	44.924	47.233
10)	B gamma-Chl...	5.935	5.112	289.3E6	2767.5E6	44.506	50.661
11)	B alpha-Chl...	6.016	5.176	295.5E6	2557.0E6	42.935	48.861
12)	B 4,4'-DDE	6.186	5.360	262.5E6	2603.8E6	45.270	48.722
13)	MA Dieldrin	6.337	5.499	294.2E6	2616.5E6	45.514	48.175
14)	MA Endrin	6.564	5.775	247.5E6	2361.5E6	49.873	52.254
15)	B Endosulfa...	6.777	6.067	256.4E6	2227.8E6	46.121	47.726
16)	A 4,4'-DDD	6.696	5.915	207.4E6	2183.5E6	42.219	44.680
17)	MA 4,4'-DDT	7.012	6.169	217.0E6	2225.5E6	52.478	56.871
18)	B Endrin al...	6.906	6.245	185.6E6	1690.8E6	44.550	47.913
19)	B Endosulfa...	7.141	6.468	229.9E6	2165.0E6	44.681	48.288
20)	A Methoxychlor	7.485	6.739	110.2E6	1101.5E6	50.682	54.933
21)	B Endrin ke...	7.621	6.977	245.1E6	2351.3E6	43.512	46.145
22)	Mirex	8.103	7.169	153.3E6	1540.7E6	43.103	46.491
23)	Chlordane-1	0.000	3.888	0	981603	N.D.	0.571 #
24)	Chlordane-2	5.260f	4.494	327.4E6	67513368	1325.883	38.556 #
25)	Chlordane-3	5.935	5.112	289.3E6	2767.5E6	299.863	480.998 #
26)	Chlordane-4	6.016	5.176	295.5E6	2557.0E6	246.015	534.532 #
27)	Chlordane-5	6.854	6.067	524238	2227.8E6	2.653	1097.888 #

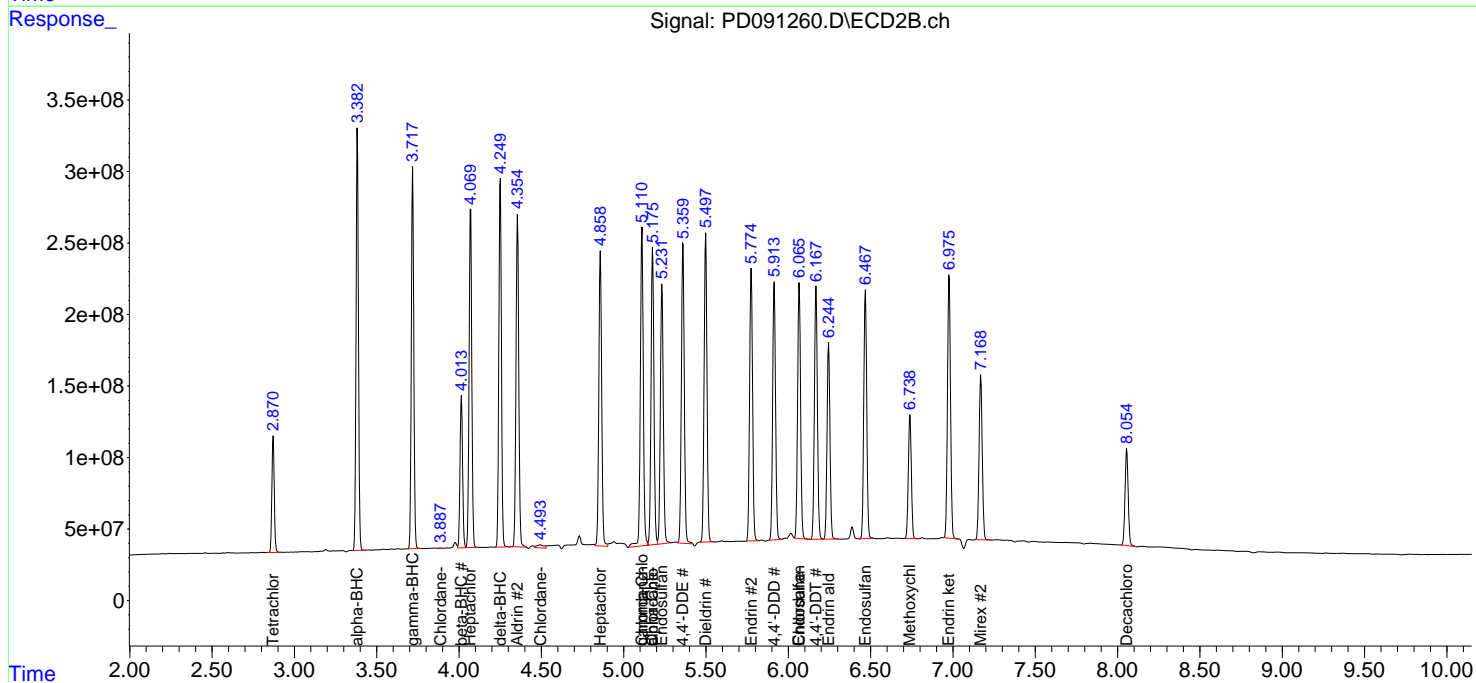
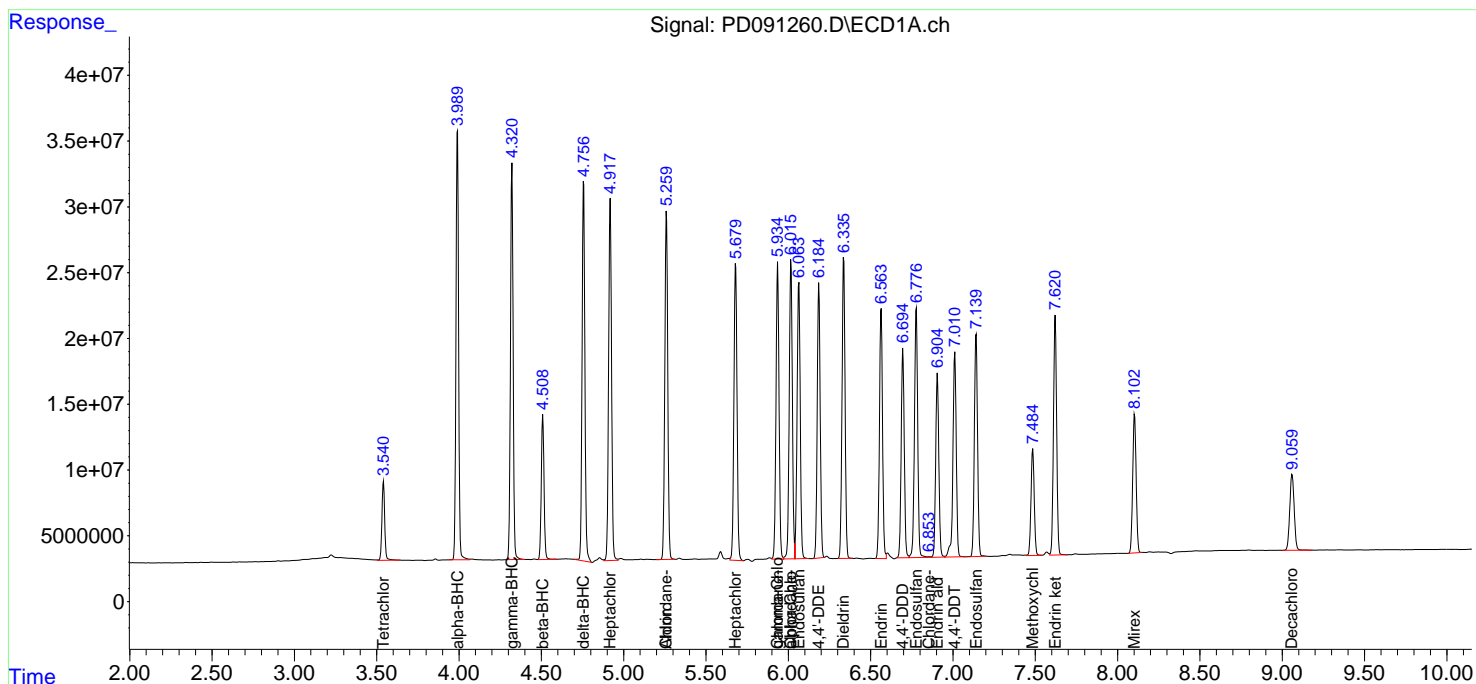
(f)=RT Delta > 1/2 Window (#)=Amounts differ by > 25% (m)=manual int.

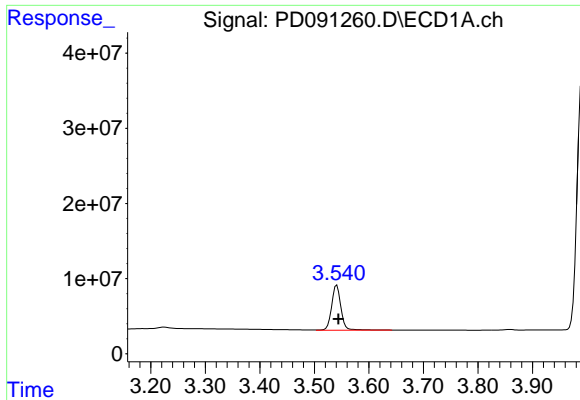
Data Path : Z:\pestpcbsrv\HPCHEM1\ECD\_D\Data\PD111825\  
 Data File : PD091260.D  
 Signal(s) : Signal #1: ECD1A.ch Signal #2: ECD2B.ch  
 Acq On : 18 Nov 2025 17:19  
 Operator : AR\AJ  
 Sample : Q3660-01  
 Misc :  
 ALS Vial : 14 Sample Multiplier: 1

Instrument :  
 ECD\_D  
 ClientSampleId :

Integration File signal 1: autoint1.e  
 Integration File signal 2: autoint2.e  
 Quant Time: Nov 18 22:17:24 2025  
 Quant Method : Z:\pestpcbsrv\HPCHEM1\ECD\_D\Method\PD111525.M  
 Quant Title : GC Extractables  
 QLast Update : Sat Nov 15 04:46:13 2025  
 Response via : Initial Calibration  
 Integrator: ChemStation

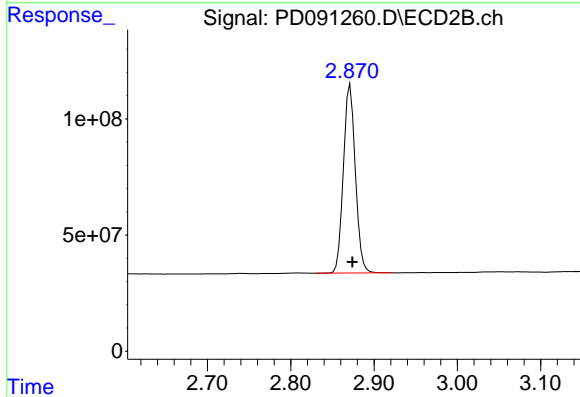
Volume Inj. : 1 µl  
 Signal #1 Phase : ZB-MR1 Signal #2 Phase: ZB-MR2  
 Signal #1 Info : 30M x 0.32mm x0.5 Signal #2 Info : 30M x 0.32mm x 0.25µm



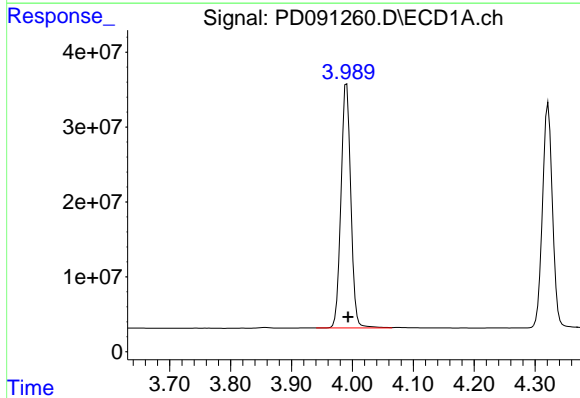


#1 Tetrachloro-m-xylene  
 R.T.: 3.541 min  
 Delta R.T.: -0.003 min  
 Response: 70979265  
 Conc: 20.58 ng/ml

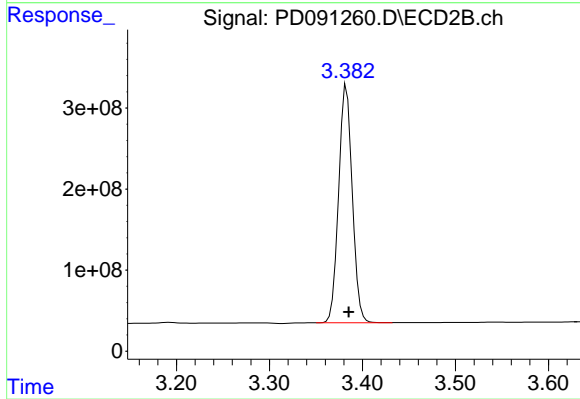
Instrument :  
 ECD\_D  
 ClientSampleId :



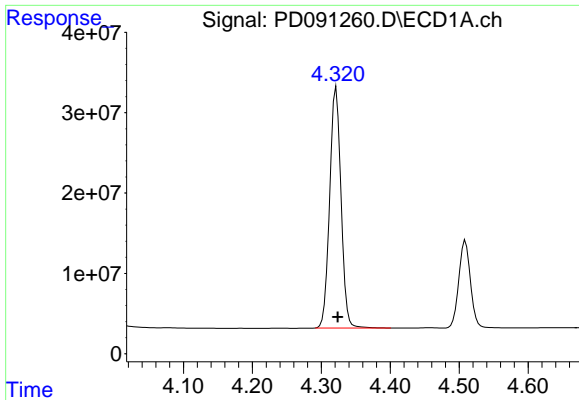
#1 Tetrachloro-m-xylene  
 R.T.: 2.871 min  
 Delta R.T.: -0.003 min  
 Response: 810905621  
 Conc: 22.14 ng/ml



#2 alpha-BHC  
 R.T.: 3.991 min  
 Delta R.T.: -0.002 min  
 Response: 364984262  
 Conc: 45.65 ng/ml

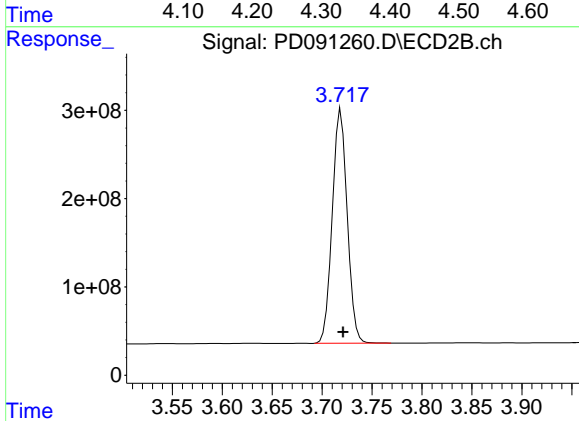


#2 alpha-BHC  
 R.T.: 3.383 min  
 Delta R.T.: -0.002 min  
 Response: 2987875250  
 Conc: 47.27 ng/ml

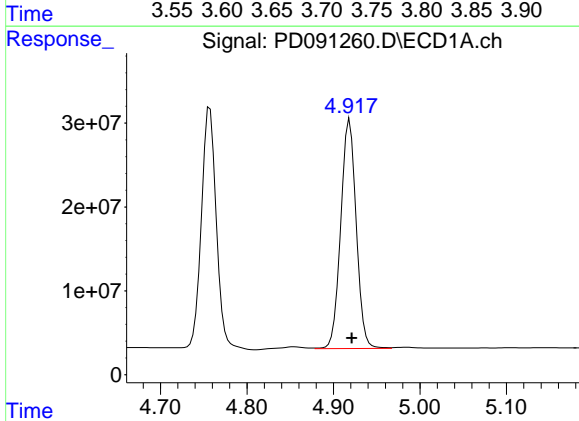


#3 gamma-BHC (Lindane)  
 R.T.: 4.322 min  
 Delta R.T.: -0.002 min  
 Response: 342539011  
 Conc: 45.84 ng/ml

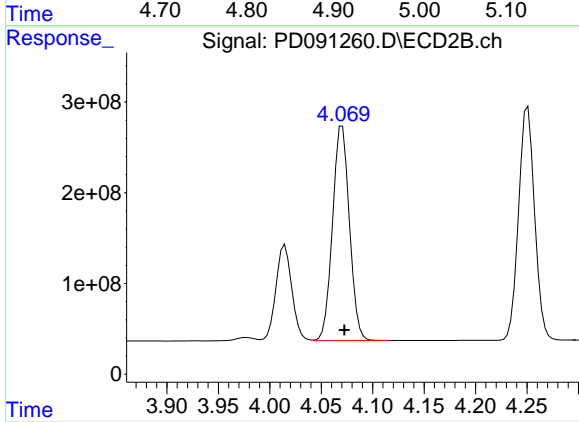
Instrument :  
 ECD\_D  
 ClientSampleId :



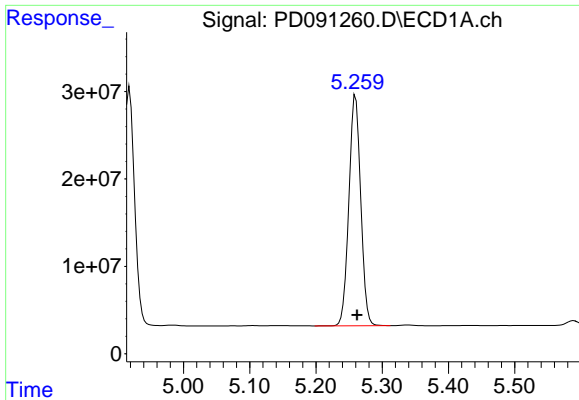
#3 gamma-BHC (Lindane)  
 R.T.: 3.719 min  
 Delta R.T.: -0.002 min  
 Response: 2762942152  
 Conc: 47.78 ng/ml



#4 Heptachlor  
 R.T.: 4.919 min  
 Delta R.T.: -0.002 min  
 Response: 337124689  
 Conc: 47.07 ng/ml



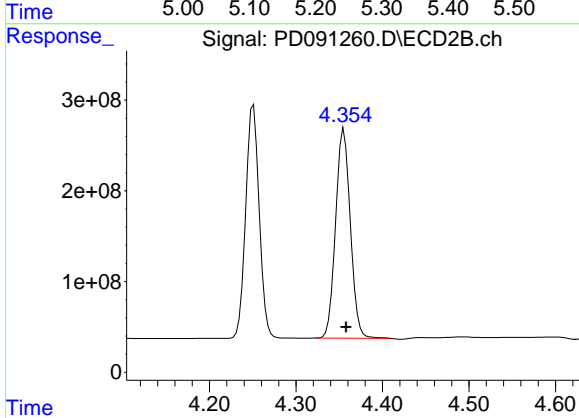
#4 Heptachlor  
 R.T.: 4.070 min  
 Delta R.T.: -0.002 min  
 Response: 2703739866  
 Conc: 48.97 ng/ml



#5 Aldrin

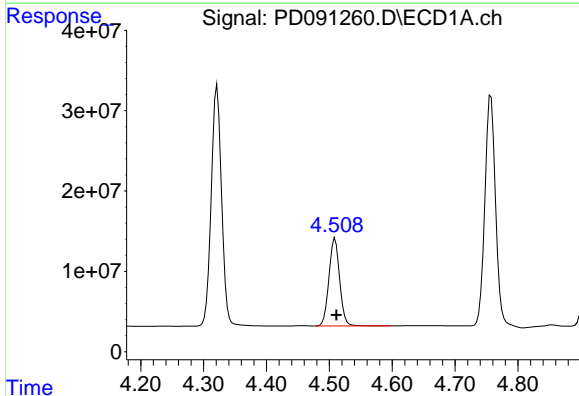
R.T.: 5.260 min  
 Delta R.T.: -0.002 min  
 Response: 327400336  
 Conc: 45.12 ng/ml

Instrument :  
 ECD\_D  
 ClientSampleId :



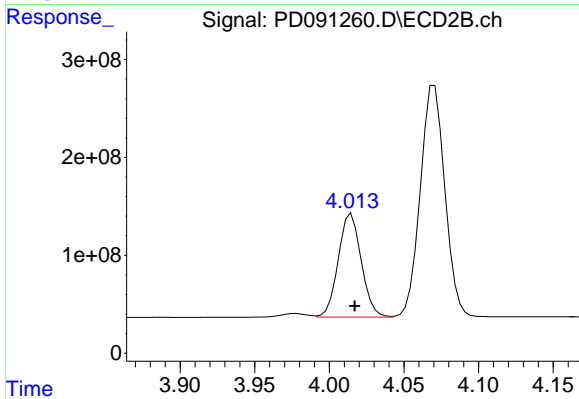
#5 Aldrin

R.T.: 4.355 min  
 Delta R.T.: -0.002 min  
 Response: 2715664615  
 Conc: 48.10 ng/ml



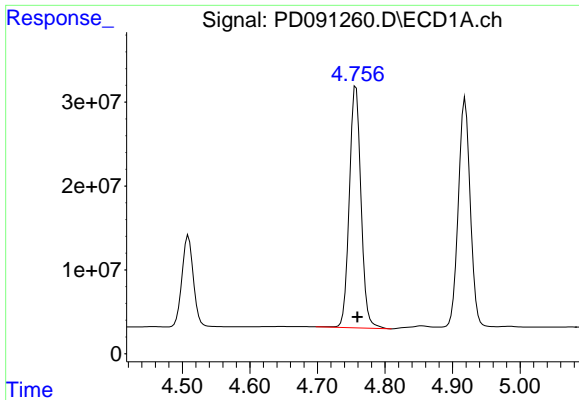
#6 beta-BHC

R.T.: 4.509 min  
 Delta R.T.: -0.002 min  
 Response: 128262132  
 Conc: 44.14 ng/ml



#6 beta-BHC

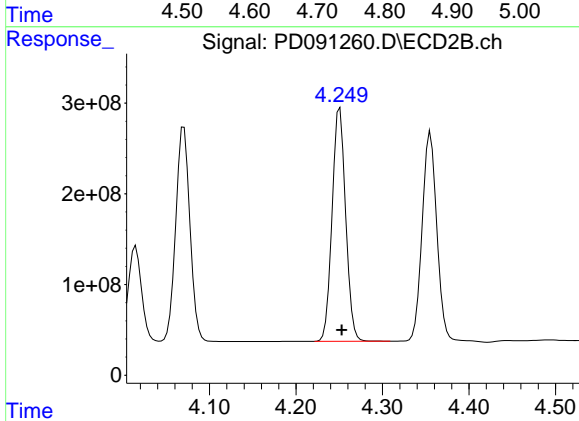
R.T.: 4.015 min  
 Delta R.T.: -0.002 min  
 Response: 1134909685  
 Conc: 47.23 ng/ml



#7 delta-BHC

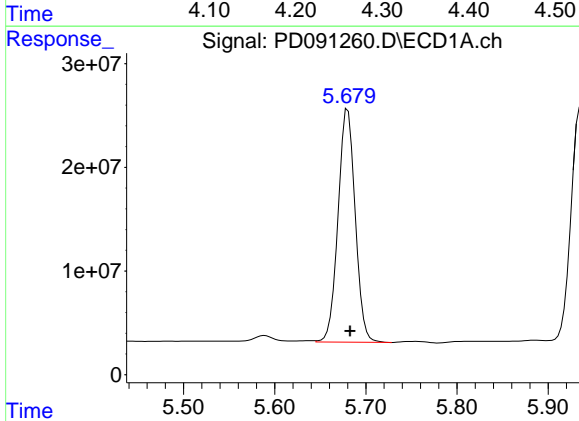
R.T.: 4.757 min  
 Delta R.T.: -0.002 min  
 Response: 344579024  
 Conc: 46.36 ng/ml

Instrument :  
 ECD\_D  
 ClientSampleId :



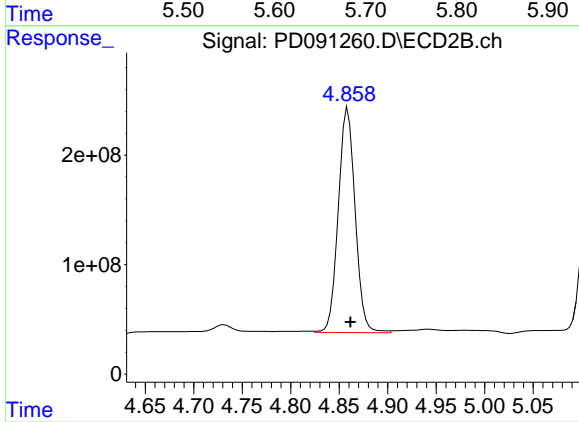
#7 delta-BHC

R.T.: 4.251 min  
 Delta R.T.: -0.002 min  
 Response: 2795665311  
 Conc: 47.81 ng/ml



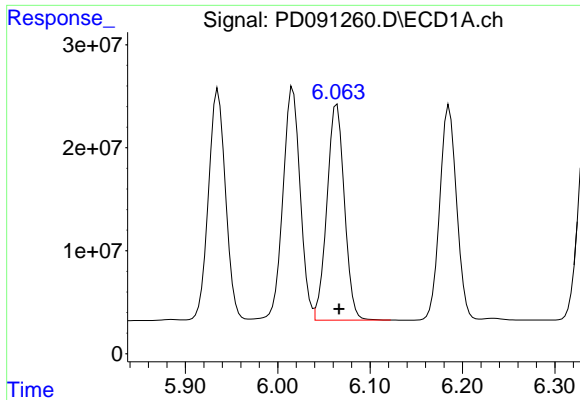
#8 Heptachlor epoxide

R.T.: 5.680 min  
 Delta R.T.: -0.002 min  
 Response: 294258938  
 Conc: 45.29 ng/ml



#8 Heptachlor epoxide

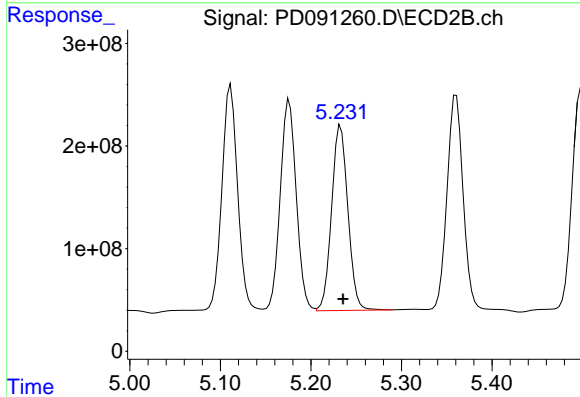
R.T.: 4.859 min  
 Delta R.T.: -0.003 min  
 Response: 2478005070  
 Conc: 48.63 ng/ml



#9 Endosulfan I

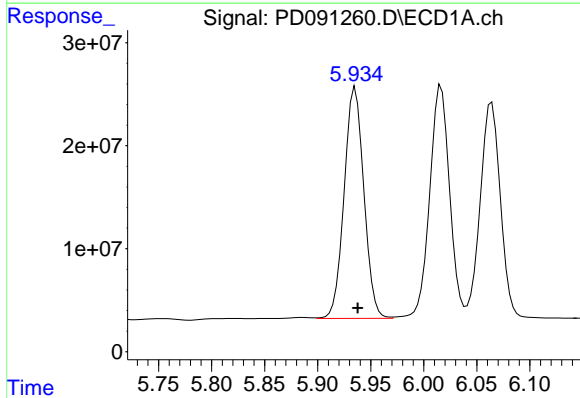
R.T.: 6.064 min  
 Delta R.T.: -0.002 min  
 Response: 275965343  
 Conc: 44.92 ng/ml

Instrument :  
 ECD\_D  
 ClientSampleId :



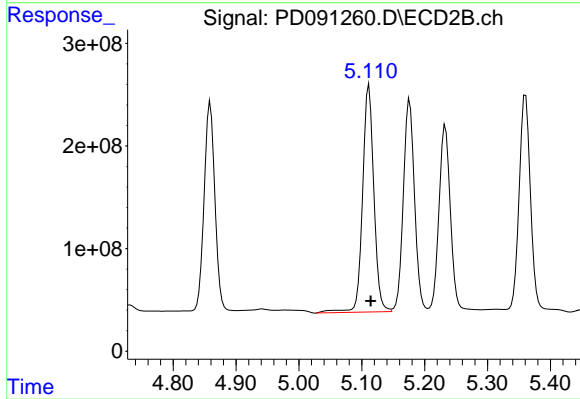
#9 Endosulfan I

R.T.: 5.233 min  
 Delta R.T.: -0.003 min  
 Response: 2260207838  
 Conc: 47.23 ng/ml



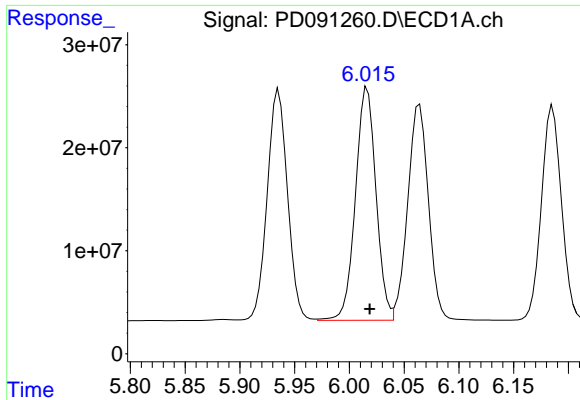
#10 gamma-Chlordane

R.T.: 5.935 min  
 Delta R.T.: -0.002 min  
 Response: 289320922  
 Conc: 44.51 ng/ml



#10 gamma-Chlordane

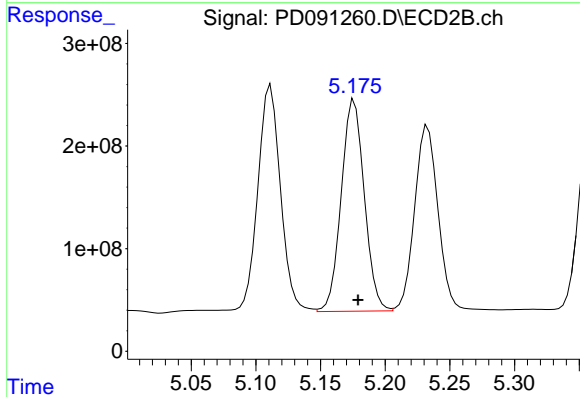
R.T.: 5.112 min  
 Delta R.T.: -0.003 min  
 Response: 2767457819  
 Conc: 50.66 ng/ml



#11 alpha-Chlordane

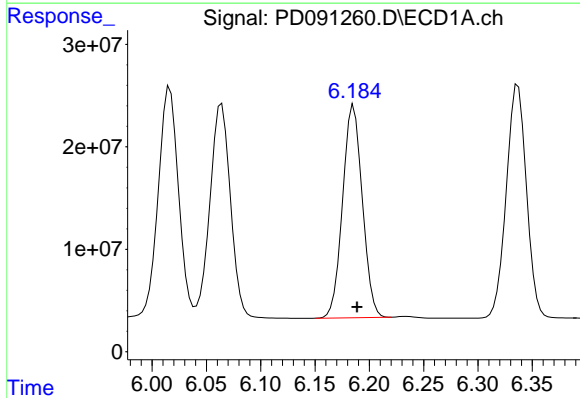
R.T.: 6.016 min  
 Delta R.T.: -0.002 min  
 Response: 295513920  
 Conc: 42.94 ng/ml

Instrument :  
 ECD\_D  
 ClientSampleId :



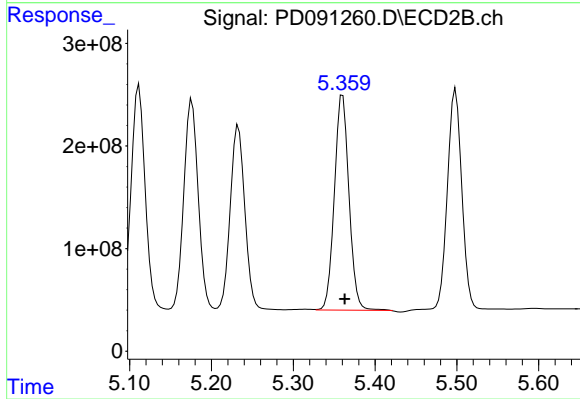
#11 alpha-Chlordane

R.T.: 5.176 min  
 Delta R.T.: -0.003 min  
 Response: 2556970734  
 Conc: 48.86 ng/ml



#12 4,4'-DDE

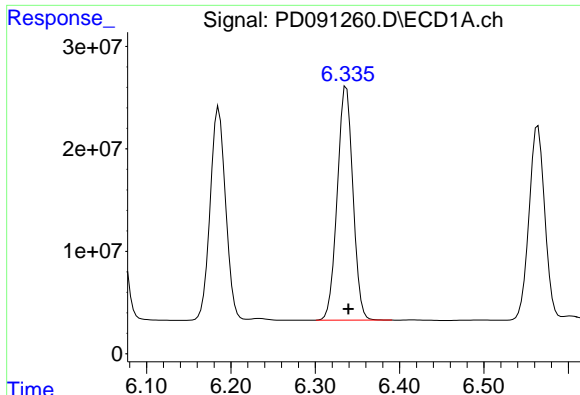
R.T.: 6.186 min  
 Delta R.T.: -0.003 min  
 Response: 262537365  
 Conc: 45.27 ng/ml



#12 4,4'-DDE

R.T.: 5.360 min  
 Delta R.T.: -0.002 min  
 Response: 2603791448  
 Conc: 48.72 ng/ml

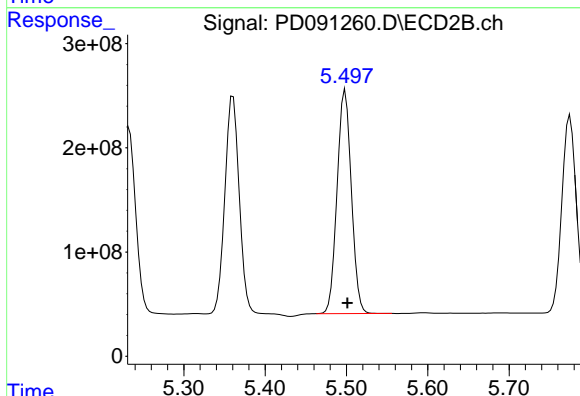




#13 Dieldrin

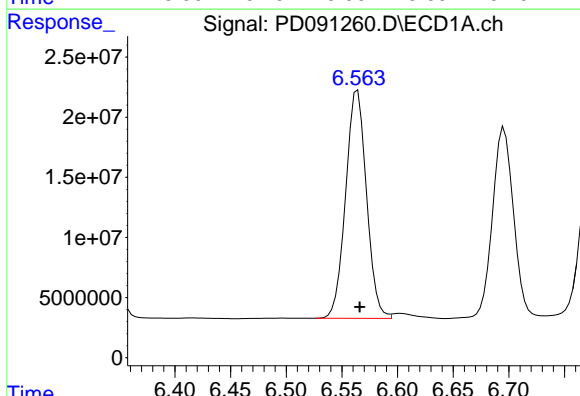
R.T.: 6.337 min  
 Delta R.T.: -0.002 min  
 Response: 294246391  
 Conc: 45.51 ng/ml

Instrument :  
 ECD\_D  
 ClientSampleId :



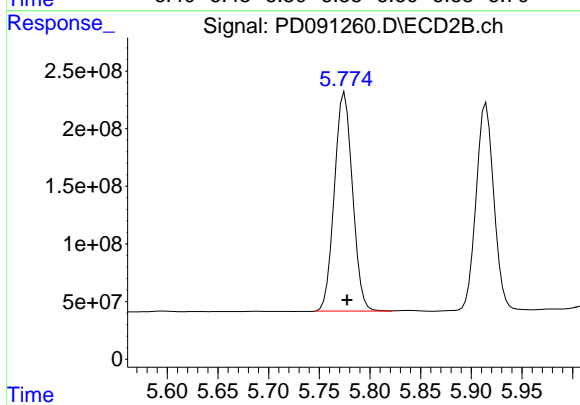
#13 Dieldrin

R.T.: 5.499 min  
 Delta R.T.: -0.003 min  
 Response: 2616454238  
 Conc: 48.18 ng/ml



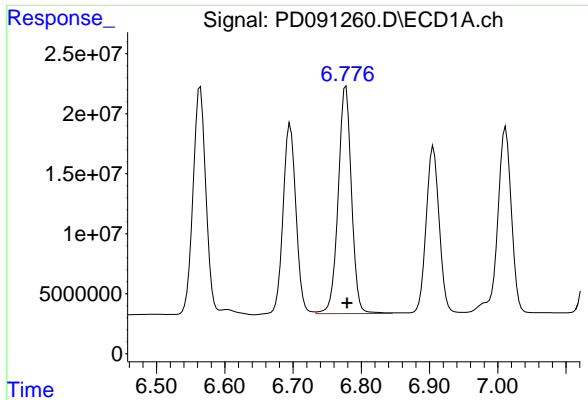
#14 Endrin

R.T.: 6.564 min  
 Delta R.T.: -0.002 min  
 Response: 247542361  
 Conc: 49.87 ng/ml



#14 Endrin

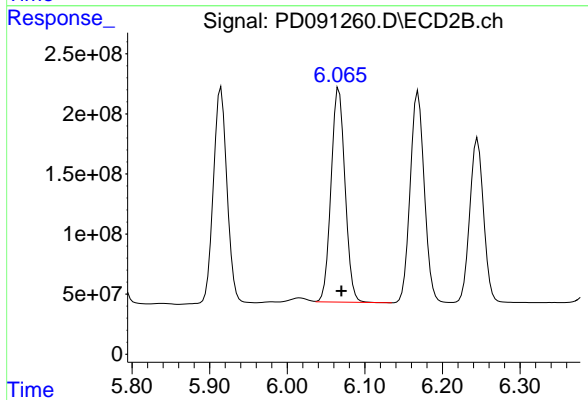
R.T.: 5.775 min  
 Delta R.T.: -0.003 min  
 Response: 2361487725  
 Conc: 52.25 ng/ml



#15 Endosulfan II

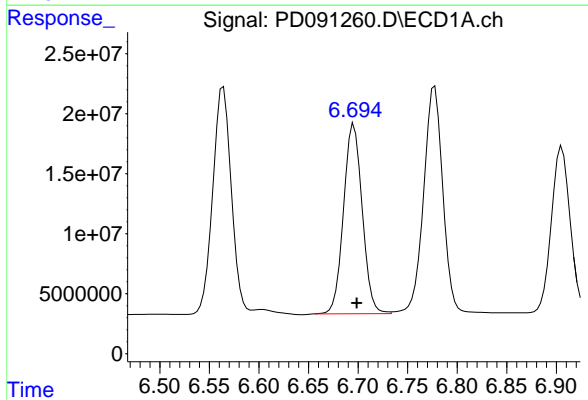
R.T.: 6.777 min  
 Delta R.T.: -0.002 min  
 Response: 256399993  
 Conc: 46.12 ng/ml

Instrument :  
 ECD\_D  
 ClientSampleId :



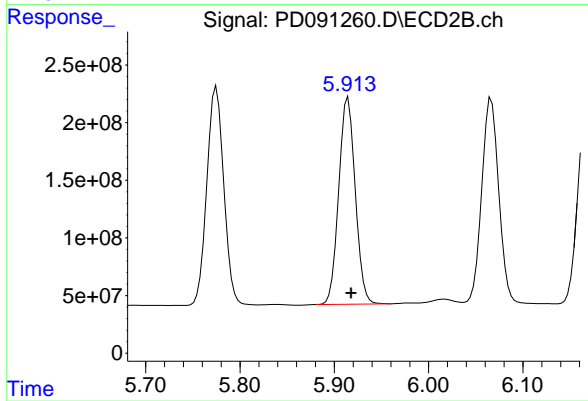
#15 Endosulfan II

R.T.: 6.067 min  
 Delta R.T.: -0.003 min  
 Response: 2227837352  
 Conc: 47.73 ng/ml



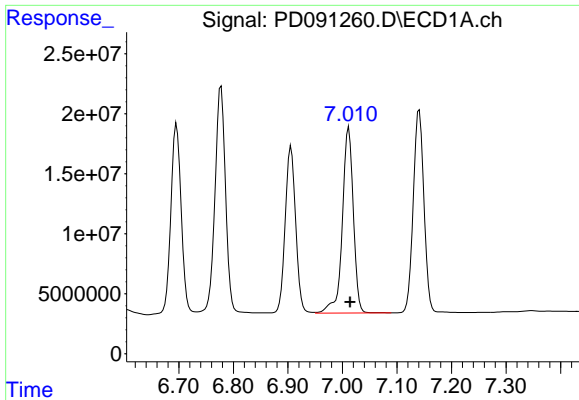
#16 4,4'-DDD

R.T.: 6.696 min  
 Delta R.T.: -0.003 min  
 Response: 207357874  
 Conc: 42.22 ng/ml



#16 4,4'-DDD

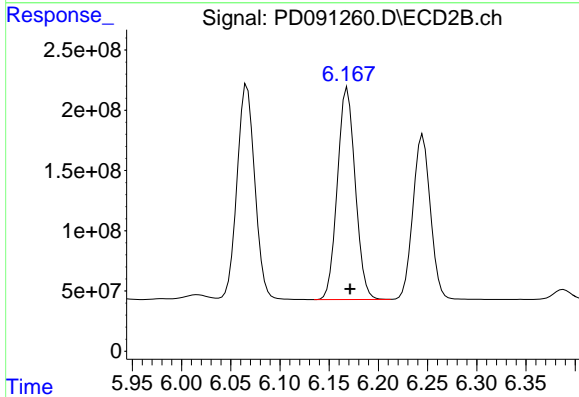
R.T.: 5.915 min  
 Delta R.T.: -0.003 min  
 Response: 2183459825  
 Conc: 44.68 ng/ml



#17 4,4'-DDT

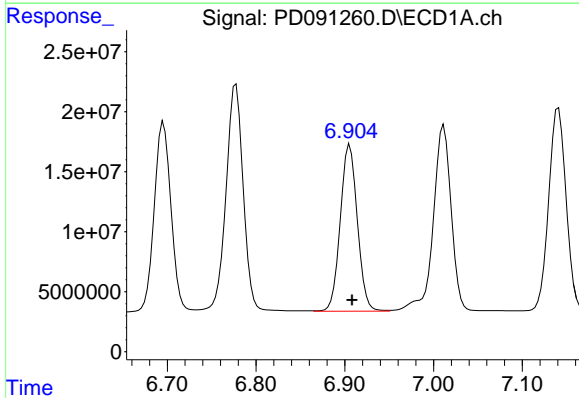
R.T.: 7.012 min  
 Delta R.T.: -0.003 min  
 Response: 217023726  
 Conc: 52.48 ng/ml

Instrument :  
 ECD\_D  
 ClientSampleId :



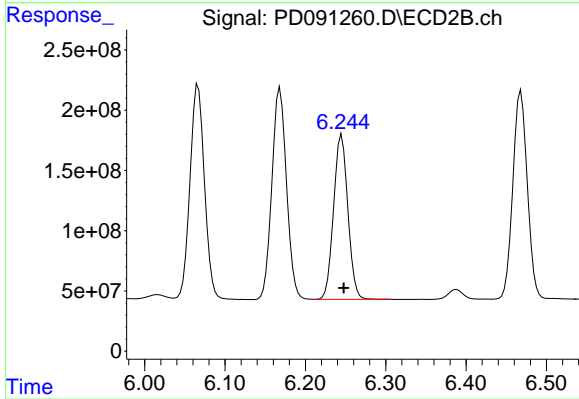
#17 4,4'-DDT

R.T.: 6.169 min  
 Delta R.T.: -0.003 min  
 Response: 2225510474  
 Conc: 56.87 ng/ml



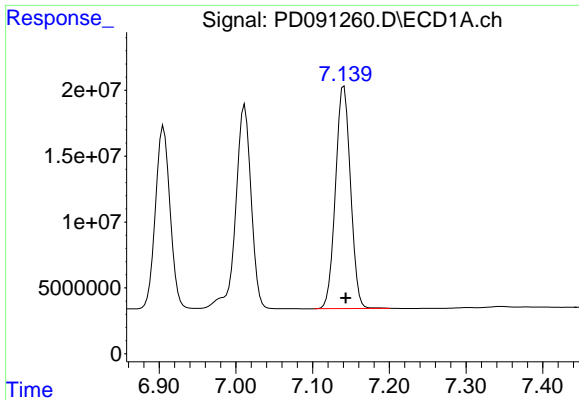
#18 Endrin aldehyde

R.T.: 6.906 min  
 Delta R.T.: -0.002 min  
 Response: 185596967  
 Conc: 44.55 ng/ml



#18 Endrin aldehyde

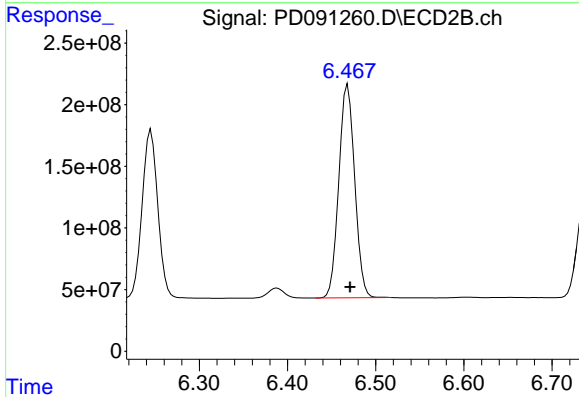
R.T.: 6.245 min  
 Delta R.T.: -0.002 min  
 Response: 1690815243  
 Conc: 47.91 ng/ml



#19 Endosulfan Sulfate

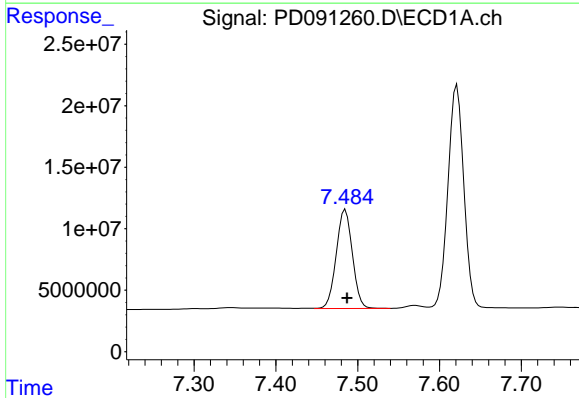
R.T.: 7.141 min  
 Delta R.T.: -0.002 min  
 Response: 229871820  
 Conc: 44.68 ng/ml

Instrument :  
 ECD\_D  
 ClientSampleId :



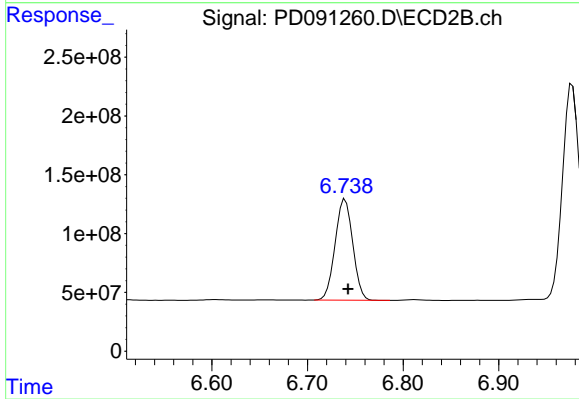
#19 Endosulfan Sulfate

R.T.: 6.468 min  
 Delta R.T.: -0.003 min  
 Response: 2164993317  
 Conc: 48.29 ng/ml



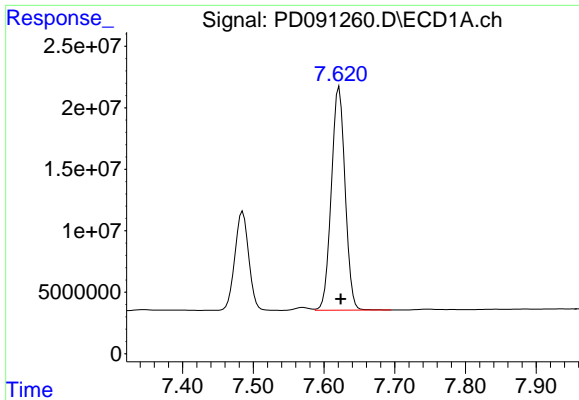
#20 Methoxychlor

R.T.: 7.485 min  
 Delta R.T.: -0.002 min  
 Response: 110200243  
 Conc: 50.68 ng/ml



#20 Methoxychlor

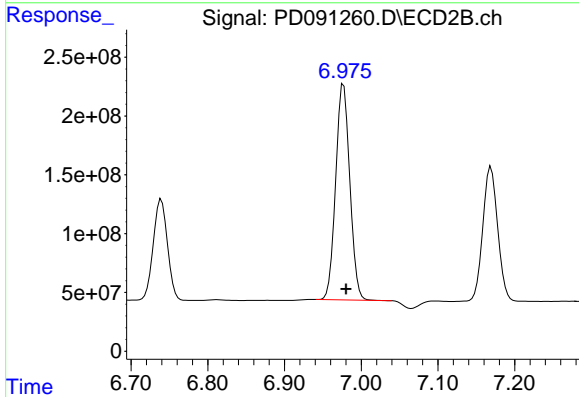
R.T.: 6.739 min  
 Delta R.T.: -0.003 min  
 Response: 1101475231  
 Conc: 54.93 ng/ml



#21 Endrin ketone

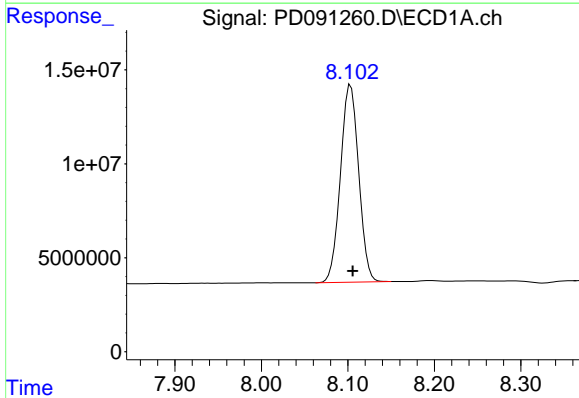
R.T.: 7.621 min  
 Delta R.T.: -0.002 min  
 Response: 245124496  
 Conc: 43.51 ng/ml

Instrument :  
 ECD\_D  
 ClientSampleId :



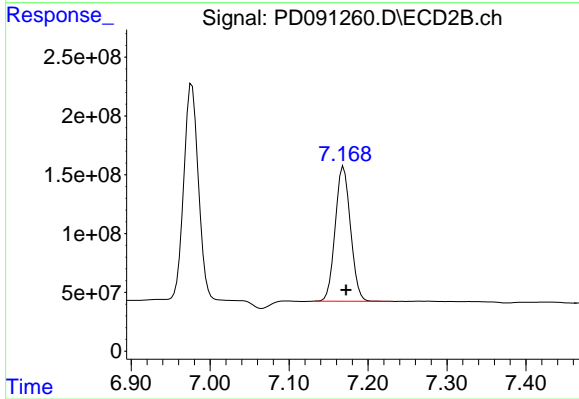
#21 Endrin ketone

R.T.: 6.977 min  
 Delta R.T.: -0.003 min  
 Response: 2351349885  
 Conc: 46.14 ng/ml



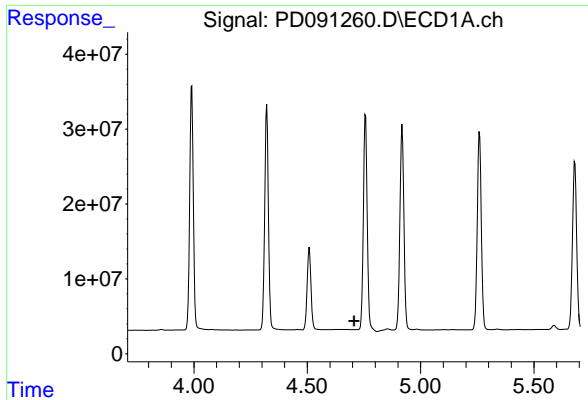
#22 Mirex

R.T.: 8.103 min  
 Delta R.T.: -0.003 min  
 Response: 153318590  
 Conc: 43.10 ng/ml



#22 Mirex

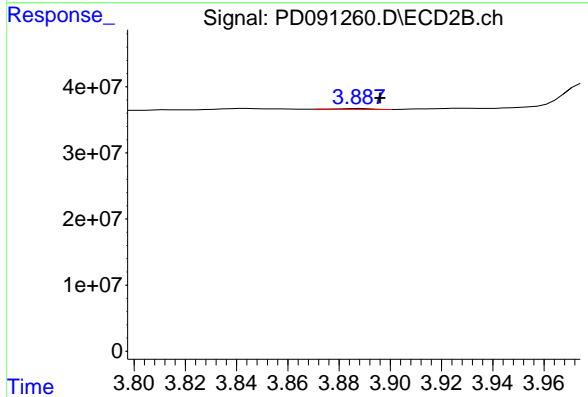
R.T.: 7.169 min  
 Delta R.T.: -0.003 min  
 Response: 1540703585  
 Conc: 46.49 ng/ml



#23 Chlordane-1

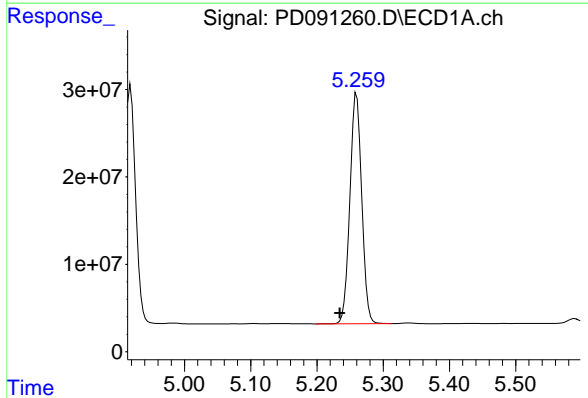
R.T.: 0.000 min  
 Exp R.T.: 4.707 min  
 Response: 0  
 Conc: N.D.

Instrument :  
 ECD\_D  
 ClientSampleId :



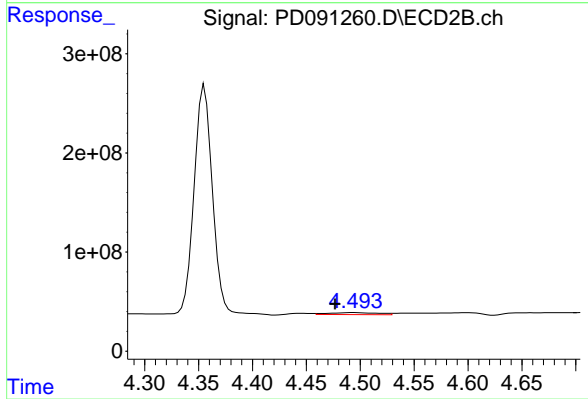
#23 Chlordane-1

R.T.: 3.888 min  
 Delta R.T.: -0.008 min  
 Response: 981603  
 Conc: 0.57 ng/ml



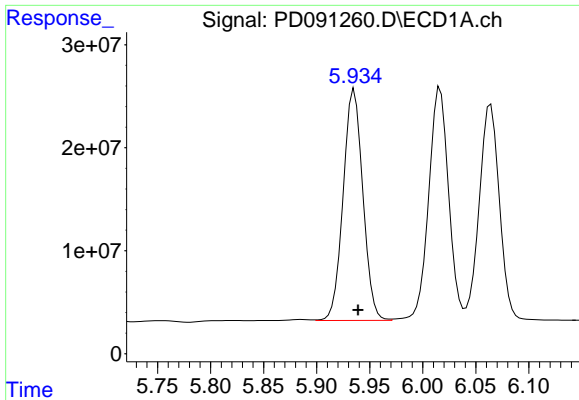
#24 Chlordane-2

R.T.: 5.260 min  
 Delta R.T.: 0.026 min  
 Response: 327400336  
 Conc: 1325.88 ng/ml



#24 Chlordane-2

R.T.: 4.494 min  
 Delta R.T.: 0.018 min  
 Response: 67513368  
 Conc: 38.56 ng/ml

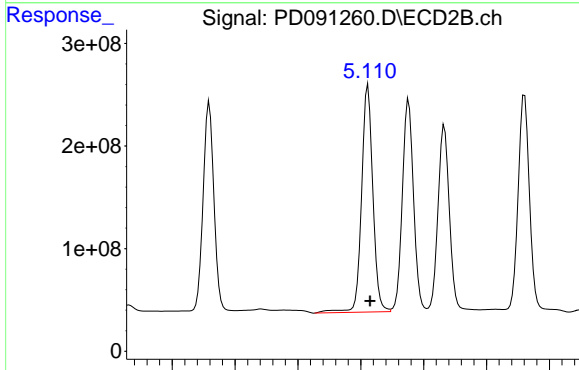


#25 Chlordane-3

R.T.: 5.935 min  
 Delta R.T.: -0.003 min  
 Response: 289320922  
 Conc: 299.86 ng/ml

Instrument :  
 ECD\_D  
 ClientSampleId :

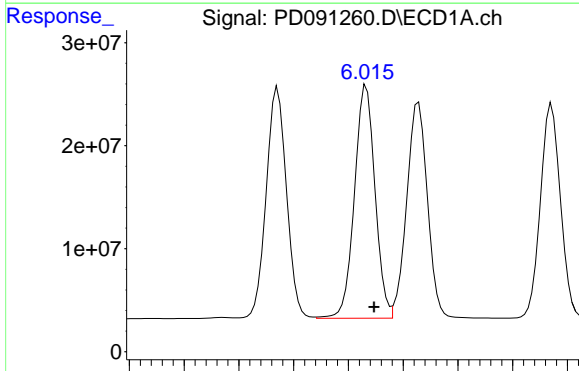
Time 5.75 5.80 5.85 5.90 5.95 6.00 6.05 6.10



#25 Chlordane-3

R.T.: 5.112 min  
 Delta R.T.: -0.003 min  
 Response: 2767457819  
 Conc: 481.00 ng/ml

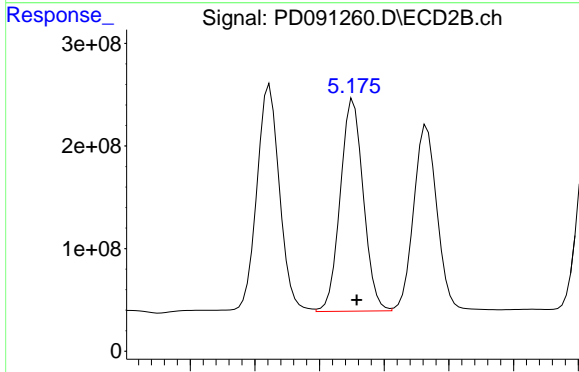
Time 4.80 4.90 5.00 5.10 5.20 5.30 5.40



#26 Chlordane-4

R.T.: 6.016 min  
 Delta R.T.: -0.007 min  
 Response: 295513920  
 Conc: 246.01 ng/ml

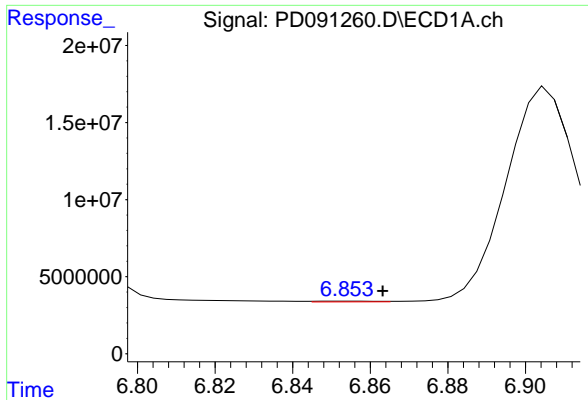
Time 5.80 5.85 5.90 5.95 6.00 6.05 6.10 6.15



#26 Chlordane-4

R.T.: 5.176 min  
 Delta R.T.: -0.003 min  
 Response: 2556970734  
 Conc: 534.53 ng/ml

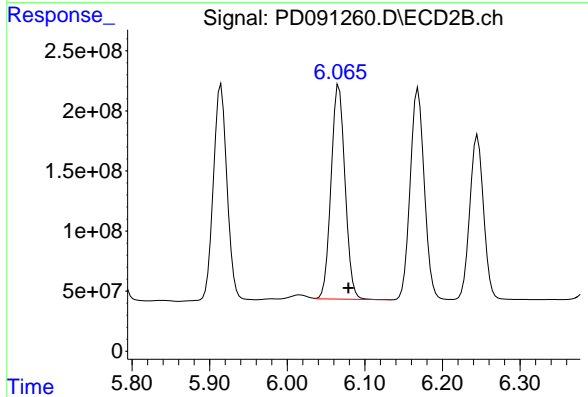
Time 5.05 5.10 5.15 5.20 5.25 5.30



#27 Chlordane-5

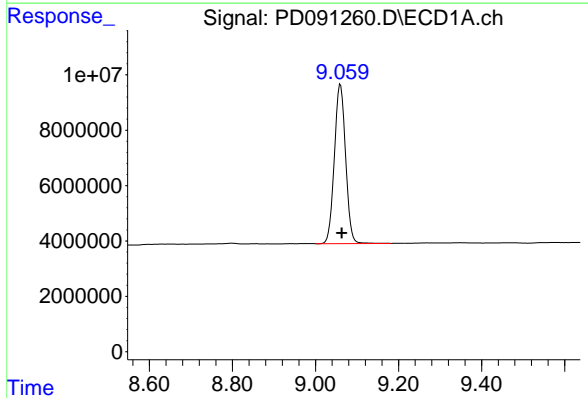
R.T.: 6.854 min  
 Delta R.T.: -0.009 min  
 Response: 524238  
 Conc: 2.65 ng/ml

Instrument :  
 ECD\_D  
 ClientSampleId :



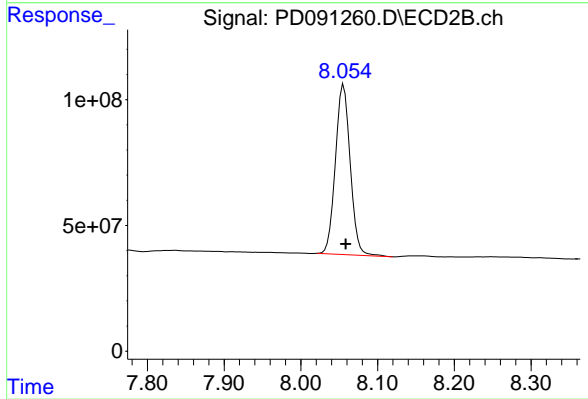
#27 Chlordane-5

R.T.: 6.067 min  
 Delta R.T.: -0.012 min  
 Response: 2227837352  
 Conc: 1097.89 ng/ml



#28 Decachlorobiphenyl

R.T.: 9.060 min  
 Delta R.T.: -0.003 min  
 Response: 107963256  
 Conc: 21.67 ng/ml



#28 Decachlorobiphenyl

R.T.: 8.056 min  
 Delta R.T.: -0.003 min  
 Response: 906454213  
 Conc: 22.90 ng/ml