

Data Path : Z:\pestpcbsrv\HPCHEM1\ECD_D\Data\PD111919\
 Data File : PD056084.D
 Signal(s) : Signal #1: ECD1A.ch Signal #2: ECD2B.ch
 Acq On : 19 Nov 2019 12:18
 Operator : SG\AJ
 Sample : K5909-12
 Misc :
 ALS Vial : 7 Sample Multiplier: 1

Instrument :
 ECD_D
 ClientSampleId :
 PEST-GPC2-BLANK-SPIKE

Integration File signal 1: autoint1.e
 Integration File signal 2: autoint2.e
 Quant Time: Nov 20 00:45:23 2019
 Quant Method : Z:\pestpcbsrv\HPCHEM1\ECD_D\Method\PD110319CLP.M
 Quant Title : GC Extractables
 QLast Update : Sat Nov 02 07:20:38 2019
 Response via : Initial Calibration
 Integrator: ChemStation

Volume Inj. : 1 µl
 Signal #1 Phase : ZB-MR2 Signal #2 Phase: ZB-MR1
 Signal #1 Info : 30M x 0.32mm x0.2 Signal #2 Info : 30M x 0.32mm x 0.50µm

Compound	RT#1	RT#2	Resp#1	Resp#2	ng/ml	ng/ml

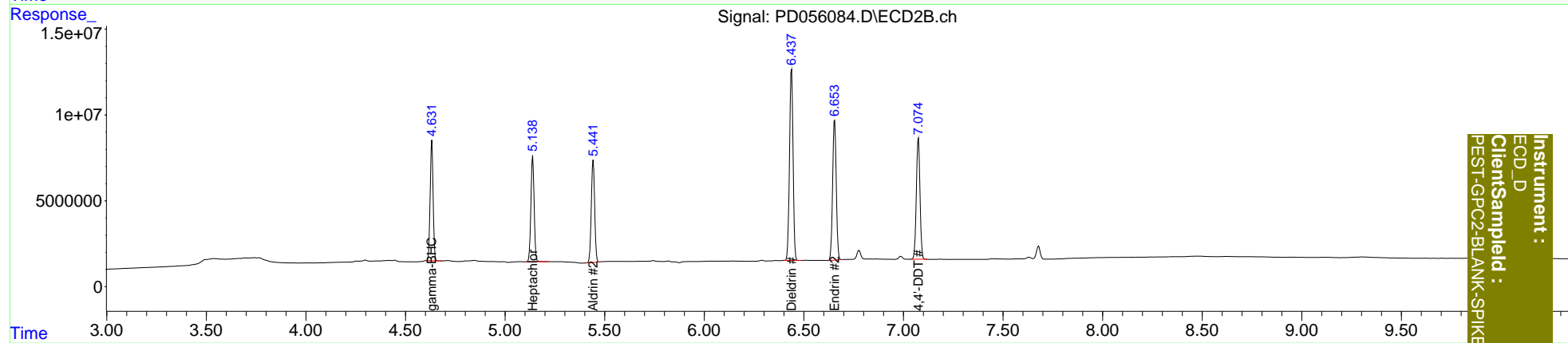
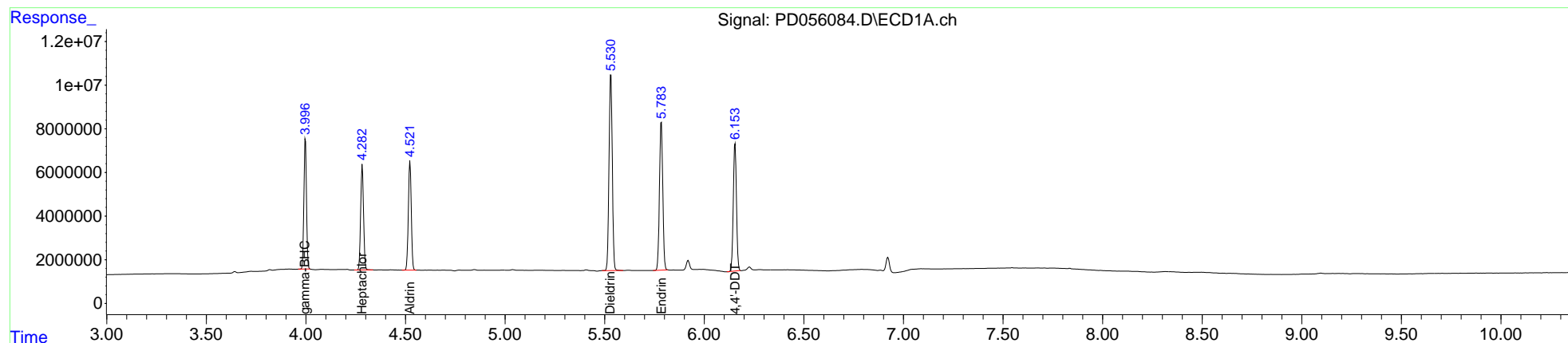
System Monitoring Compounds						
Target Compounds						
3) MA gamma-BHC...	3.998	4.632	54301620	72538505	53.089	51.487
4) MA Heptachlor	4.283	5.139	47992583	69849862	50.689	48.028
5) MB Aldrin	4.523	5.443	50667485	69591601	54.689	50.718
13) MA Dieldrin	5.531	6.438	102.5E6	138.3E6	108.962	97.809
14) MA Endrin	5.785	6.655	78445128	103.3E6	97.784	89.683
17) MA 4,4'-DDT	6.155	7.075	65003362	90363648	100.310	83.102

(f)=RT Delta > 1/2 Window (#)=Amounts differ by > 25% (m)=manual int.

Data Path : Z:\pestpcbsrv\HPCHEM1\ECD_D\Data\PD111919\
 Data File : PD056084.D
 Signal(s) : Signal #1: ECD1A.ch Signal #2: ECD2B.ch
 Acq On : 19 Nov 2019 12:18
 Operator : SG\AJ
 Sample : K5909-12
 Misc :
 ALS Vial : 7 Sample Multiplier: 1

Integration File signal 1: autoint1.e
 Integration File signal 2: autoint2.e
 Quant Time: Nov 20 00:45:23 2019
 Quant Method : Z:\pestpcbsrv\HPCHEM1\ECD_D\Method\PD110319CLP.M
 Quant Title : GC Extractables
 QLast Update : Sat Nov 02 07:20:38 2019
 Response via : Initial Calibration
 Integrator: ChemStation

Volume Inj. : 1 µl
 Signal #1 Phase : ZB-MR2 Signal #2 Phase: ZB-MR1
 Signal #1 Info : 30M x 0.32mm x 0.2 Signal #2 Info : 30M x 0.32mm x 0.50µm



Instrument :
 ECD_D
 Client Sample Id :
 PEST-GPC2-BLANK-SPIKE