

Data Path : Z:\pestpcbsrv\HPCHEM1\ECD_D\Data\PD111921\
 Data File : PD067011.D
 Signal(s) : Signal #1: ECD1A.ch Signal #2: ECD2B.ch
 Acq On : 19 Nov 2021 10:03
 Operator : AR\AJ
 Sample : PB140615BS
 Misc :
 ALS Vial : 5 Sample Multiplier: 1

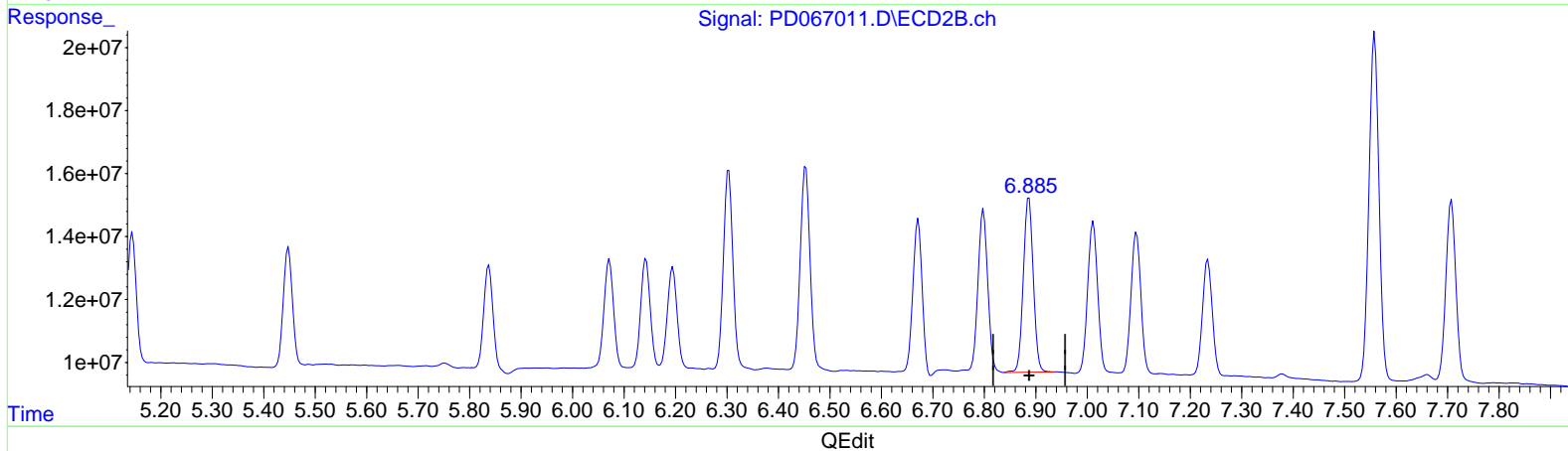
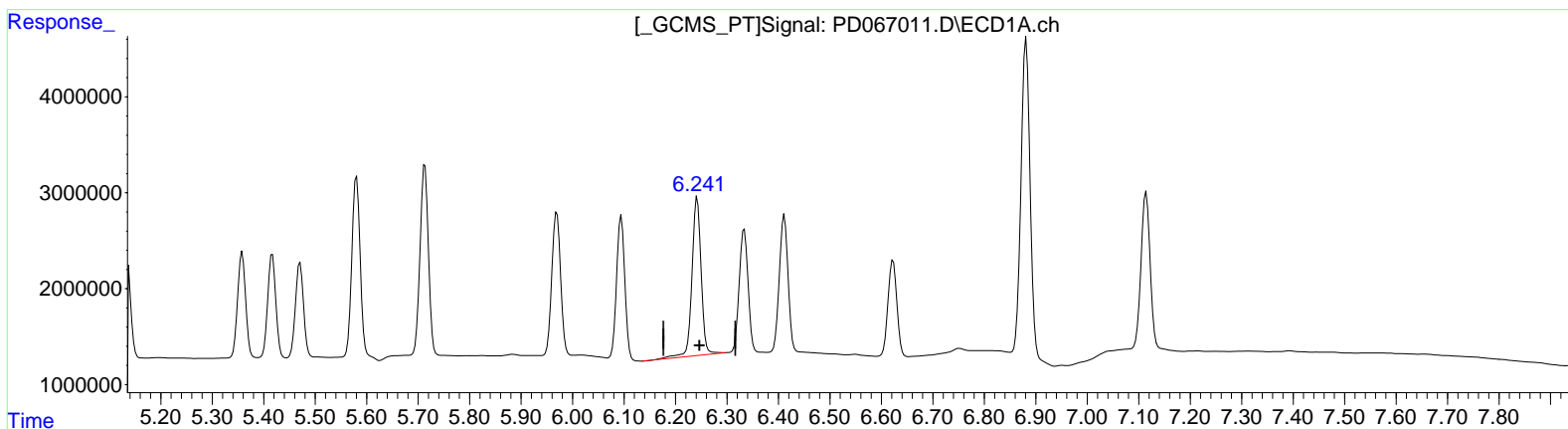
Instrument :
 ECD_D
 ClientSampleId :
 PLCS615

Manual Integrations APPROVED

Reviewed By : Abdul Mirza 11/22/2021
 Supervised By : Ankita Jodhani 11/22/2021

Integration File signal 1: autoint1.e
 Integration File signal 2: autoint2.e
 Quant Time: Nov 20 03:38:12 2021
 Quant Method : Z:\pestpcbsrv\HPCHEM1\ECD_D\Method\PD102721CLP.M
 Quant Title : GC Extractables
 QLast Update : Wed Oct 27 16:50:52 2021
 Response via : Initial Calibration
 Integrator: ChemStation

Volume Inj. : 1 µl
 Signal #1 Phase : ZB-MR2 Signal #2 Phase: ZB-MR1
 Signal #1 Info : 30M x 0.32mm x 0.2 Signal #2 Info : 30M x 0.32mm x 0.50µm



(15) Endosulfan II (B)
 6.242min 9.806 ng/ml
 response 20362206

(15) Endosulfan II #2 (B)
 6.887min 10.358 ng/ml
 response 74279307

Data Path : Z:\pestpcbsrv\HPCHEM1\ECD_D\Data\PD111921\
 Data File : PD067011.D
 Signal(s) : Signal #1: ECD1A.ch Signal #2: ECD2B.ch
 Acq On : 19 Nov 2021 10:03
 Operator : AR\AJ
 Sample : PB140615BS
 Misc :
 ALS Vial : 5 Sample Multiplier: 1

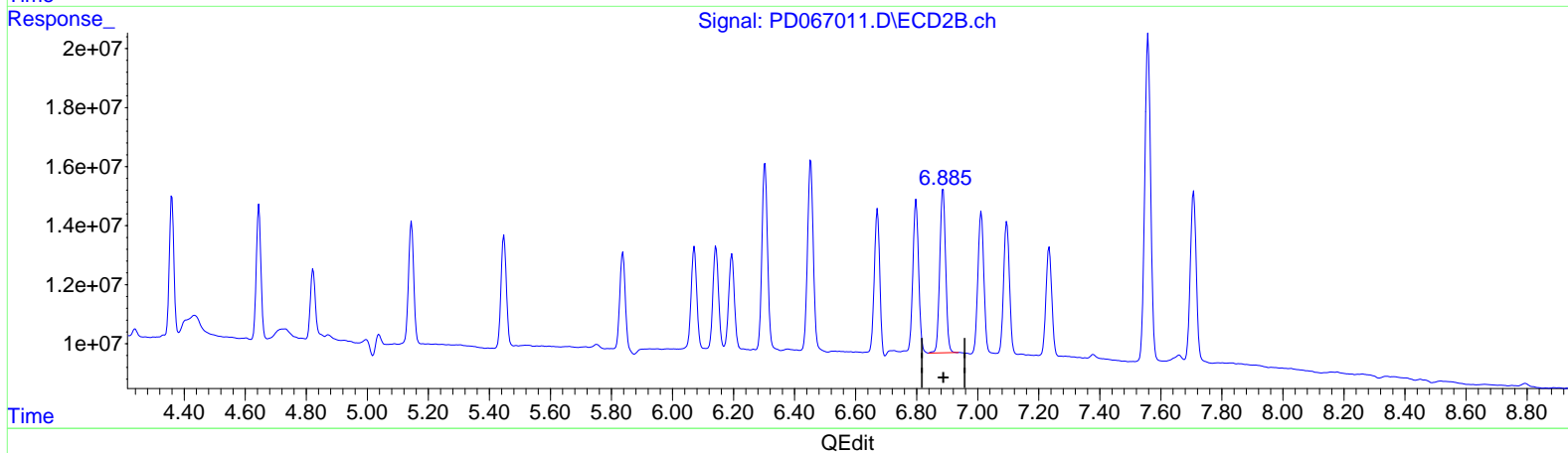
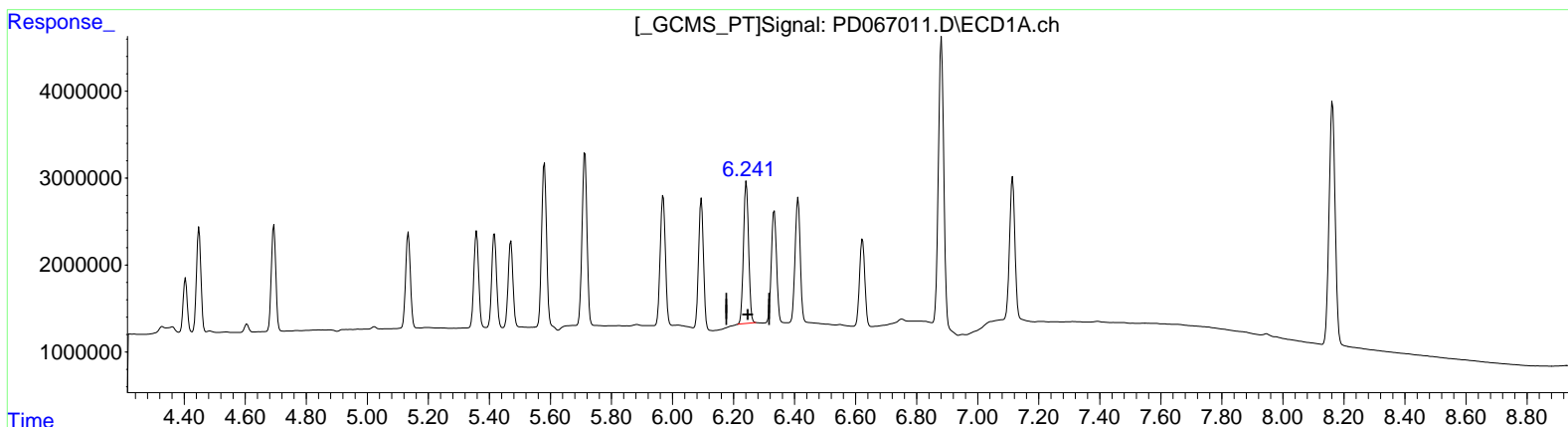
Instrument :
 ECD_D
 ClientSampleId :
 PLCS615

Manual Integrations APPROVED

Reviewed By : Abdul Mirza 11/22/2021
 Supervised By : Ankita Jodhani 11/22/2021

Integration File signal 1: autoint1.e
 Integration File signal 2: autoint2.e
 Quant Time: Nov 20 03:38:12 2021
 Quant Method : Z:\pestpcbsrv\HPCHEM1\ECD_D\Method\PD102721CLP.M
 Quant Title : GC Extractables
 QLast Update : Wed Oct 27 16:50:52 2021
 Response via : Initial Calibration
 Integrator: ChemStation

Volume Inj. : 1 µl
 Signal #1 Phase : ZB-MR2 Signal #2 Phase: ZB-MR1
 Signal #1 Info : 30M x 0.32mm x 0.2 Signal #2 Info : 30M x 0.32mm x 0.50µm



(15) Endosulfan II (B)
 6.241min 9.102 ng/ml m
 response 18899043

(15) Endosulfan II #2 (B)
 6.887min 10.358 ng/ml
 response 74279307

Data Path : Z:\pestpcbsrv\HPCHEM1\ECD_D\Data\PD111921\
 Data File : PD067011.D
 Signal(s) : Signal #1: ECD1A.ch Signal #2: ECD2B.ch
 Acq On : 19 Nov 2021 10:03
 Operator : AR\AJ
 Sample : PB140615BS
 Misc :
 ALS Vial : 5 Sample Multiplier: 1

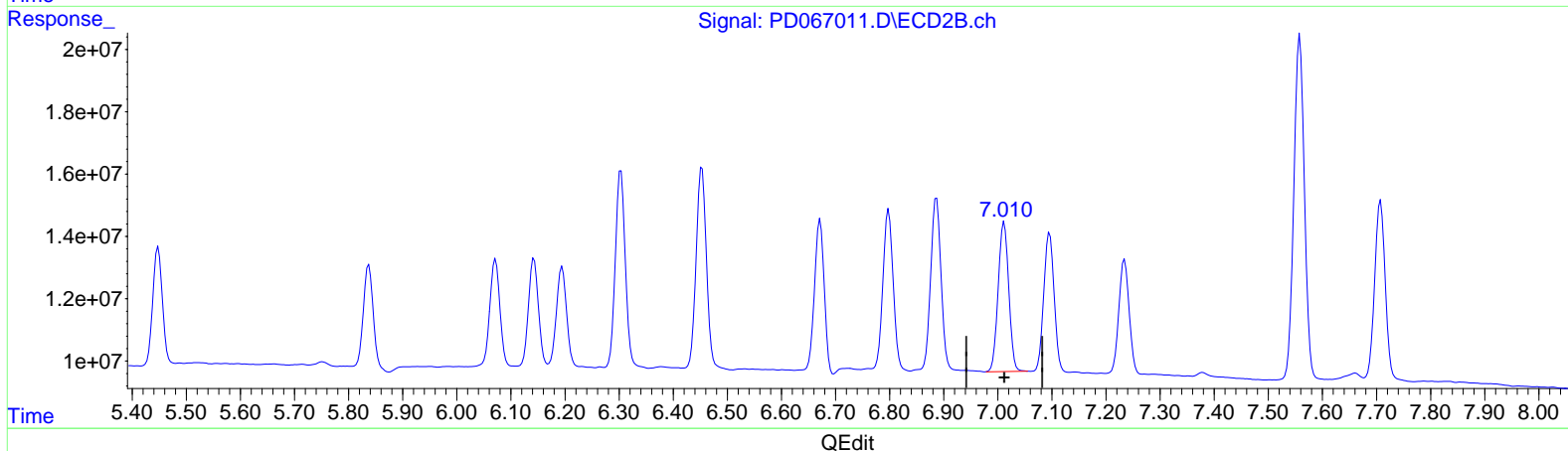
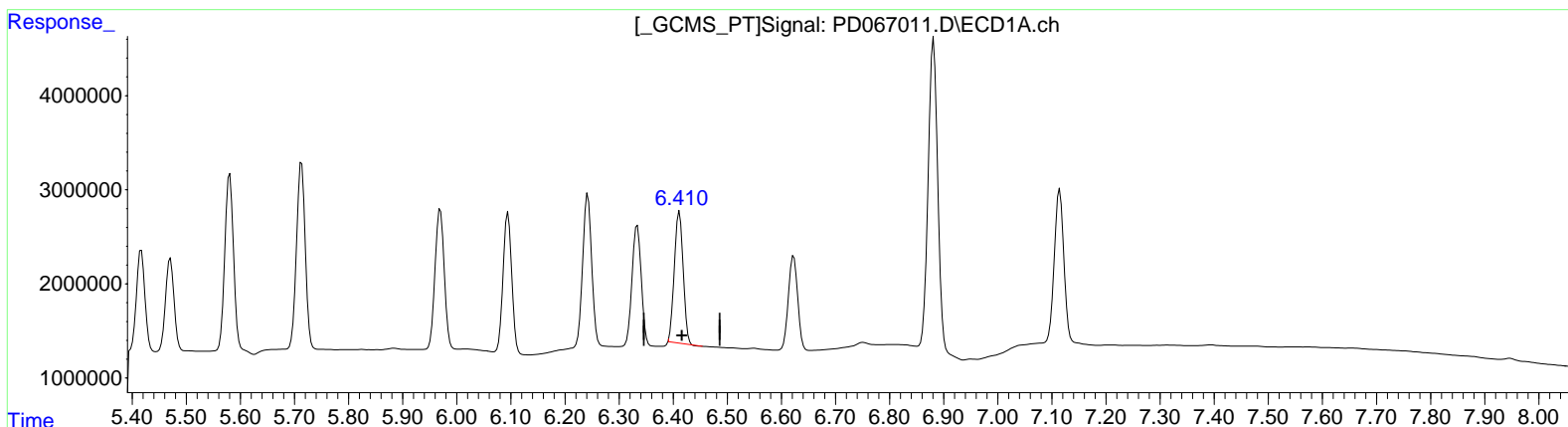
Instrument :
 ECD_D
 ClientSampleId :
 PLCS615

Manual Integrations APPROVED

Reviewed By : Abdul Mirza 11/22/2021
 Supervised By : Ankita Jodhani 11/22/2021

Integration File signal 1: autoint1.e
 Integration File signal 2: autoint2.e
 Quant Time: Nov 20 03:38:12 2021
 Quant Method : Z:\pestpcbsrv\HPCHEM1\ECD_D\Method\PD102721CLP.M
 Quant Title : GC Extractables
 QLast Update : Wed Oct 27 16:50:52 2021
 Response via : Initial Calibration
 Integrator: ChemStation

Volume Inj. : 1 µl
 Signal #1 Phase : ZB-MR2 Signal #2 Phase: ZB-MR1
 Signal #1 Info : 30M x 0.32mm x 0.2 Signal #2 Info : 30M x 0.32mm x 0.50µm



(18) Endrin aldehyde (B)
 6.411min 10.836 ng/ml
 response 15787579

(18) Endrin aldehyde #2 (B)
 7.012min 12.249 ng/ml
 response 65168894

Data Path : Z:\pestpcbsrv\HPCHEM1\ECD_D\Data\PD111921\
 Data File : PD067011.D
 Signal(s) : Signal #1: ECD1A.ch Signal #2: ECD2B.ch
 Acq On : 19 Nov 2021 10:03
 Operator : AR\AJ
 Sample : PB140615BS
 Misc :
 ALS Vial : 5 Sample Multiplier: 1

Instrument :

ECD_D

ClientSampleId :

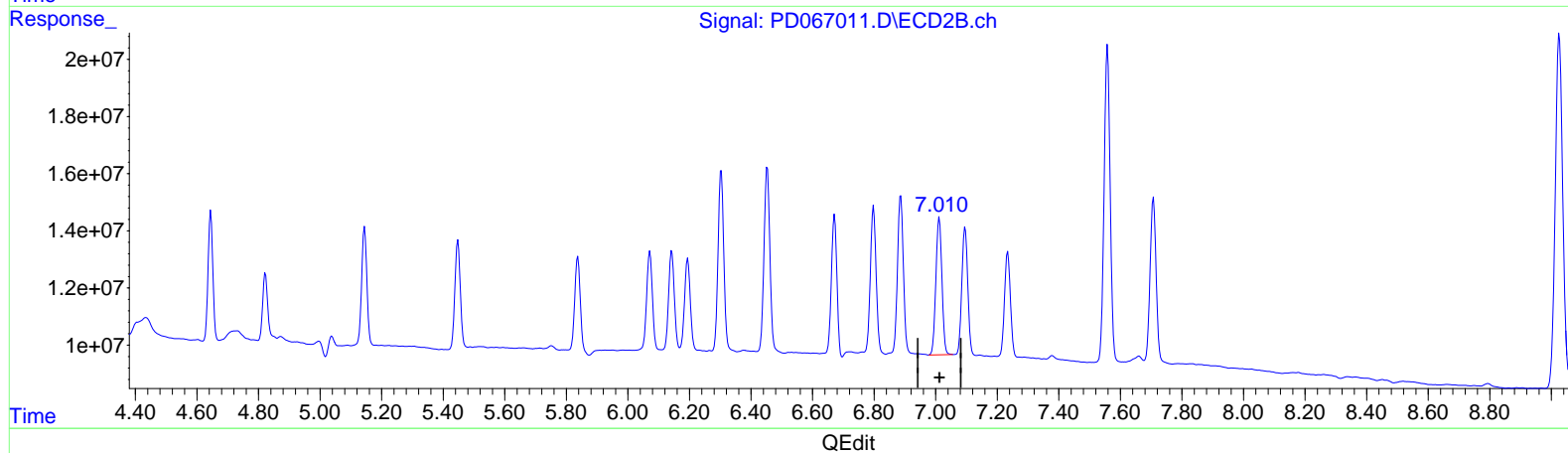
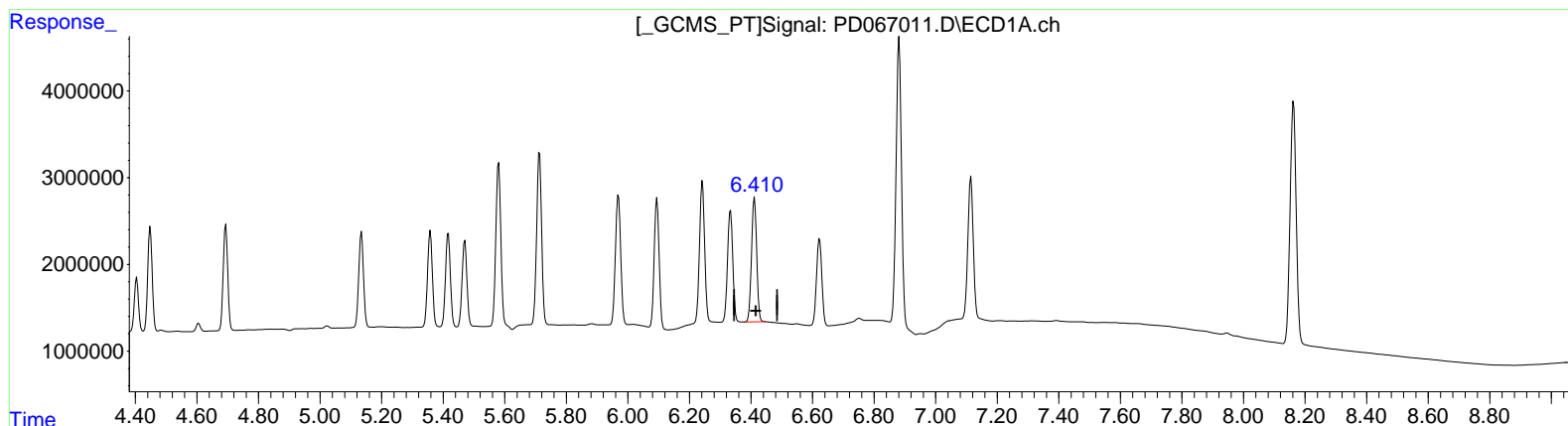
PLCS615

Manual IntegrationsAPPROVED

Reviewed By :Abdul Mirza 11/22/2021
 Supervised By :Ankita Jodhani 11/22/2021

Integration File signal 1: autoint1.e
 Integration File signal 2: autoint2.e
 Quant Time: Nov 20 03:38:12 2021
 Quant Method : Z:\pestpcbsrv\HPCHEM1\ECD_D\Method\PD102721CLP.M
 Quant Title : GC Extractables
 QLast Update : Wed Oct 27 16:50:52 2021
 Response via : Initial Calibration
 Integrator: ChemStation

Volume Inj. : 1 µl
 Signal #1 Phase : ZB-MR2 Signal #2 Phase: ZB-MR1
 Signal #1 Info : 30M x 0.32mm x0.2 Signal #2 Info : 30M x 0.32mm x 0.50µm



(18) Endrin aldehyde (B)
 6.410min 11.534 ng/ml m
 response 16803536

(18) Endrin aldehyde #2 (B)
 7.012min 12.249 ng/ml
 response 65168894

Data Path : Z:\pestpcbsrv\HPCHEM1\ECD_D\Data\PD111921\
 Data File : PD067011.D
 Signal(s) : Signal #1: ECD1A.ch Signal #2: ECD2B.ch
 Acq On : 19 Nov 2021 10:03
 Operator : AR\AJ
 Sample : PB140615BS
 Misc :
 ALS Vial : 5 Sample Multiplier: 1

Instrument :
 ECD_D
 ClientSampleId :
 PLCS615

Manual Integrations APPROVED

Reviewed By : Abdul Mirza 11/22/2021
 Supervised By : Ankita Jodhani 11/22/2021

Integration File signal 1: autoint1.e
 Integration File signal 2: autoint2.e
 Quant Time: Nov 20 03:38:12 2021
 Quant Method : Z:\pestpcbsrv\HPCHEM1\ECD_D\Method\PD102721CLP.M
 Quant Title : GC Extractables
 QLast Update : Wed Oct 27 16:50:52 2021
 Response via : Initial Calibration
 Integrator: ChemStation

Volume Inj. : 1 µl
 Signal #1 Phase : ZB-MR2 Signal #2 Phase: ZB-MR1
 Signal #1 Info : 30M x 0.32mm x 0.2 Signal #2 Info : 30M x 0.32mm x 0.50µm

Compound	RT#1	RT#2	Resp#1	Resp#2	ng/ml	ng/ml
----------	------	------	--------	--------	-------	-------

System Monitoring Compounds

1) SA Tetrachlo...	3.438	3.967	37236532	191.5E6	19.263	22.114
27) SA Decachlor...	8.163	9.026	39088679	211.7E6	33.361	40.583

Target Compounds

2) A alpha-BHC	3.874	4.360	10468404	47671852	3.576	4.360
3) MA gamma-BHC...	4.156	4.645	11314938	48243133	4.087	4.774
4) MA Heptachlor	4.449	5.145	12114902	49123760	4.259	5.012
5) MB Aldrin	4.694	5.448	12531454	46465041	4.352	4.931
6) B beta-BHC	4.404	4.822	5732668	26376014	4.564	5.353
7) B delta-BHC	4.605	5.038	911746	6984975	0.344	0.706 #
8) B Heptachlo...	5.135	5.837	11916768	42077518	4.688	5.597
9) A Endosulfan I	5.471	6.195	10903409	42055925	4.757	5.375
10) B trans-Chl...	5.358	6.072	12078975	44568448	4.673	5.176
11) B cis-Chlor...	5.417	6.143	11859325	44687915	4.655	5.208
12) B 4,4'-DDE	5.580	6.303	21590014	81301046	9.453	10.677
13) MA Dieldrin	5.713	6.453	22419774	84381280	8.984	10.577
14) MA Endrin	5.969	6.672	17540365	60838955	8.290	8.965
15) B Endosulfa...	6.241	6.887	18899043	74279307	9.102m	10.358
16) A 4,4'-DDD	6.095	6.798	16563274	67204337	9.151	10.410
17) MA 4,4'-DDT	6.334	7.096	15132997	59587317	8.004	9.020
18) B Endrin al...	6.410	7.012	16803536	65168894	11.534m	12.249
19) B Endosulfa...	6.623	7.234	11990648	48591493	6.573	7.051
20) A Methoxychlor	6.881	7.558	41074299	150.5E6	43.826	46.556
21) B Endrin ke...	7.114	7.708	20187165	77329248	9.797	9.866

AJ
 11/22/21

(f)=RT Delta > 1/2 Window (#)=Amounts differ by > 25% (m)=manual int.