

Data Path : Z:\pestpcbsrv\HPCHEM1\ECD_D\Data\PD112018\
 Data File : PD050450.D
 Signal(s) : Signal #1: ECD1A.CH Signal #2: ECD2B.CH
 Acq On : 20 Nov 2018 10:46
 Operator : AJ\SJ
 Sample : PB114956BS
 Misc :
 ALS Vial : 6 Sample Multiplier: 1

Instrument :
 ECD_D
 ClientSampleId :
 PLCS56

Integration File signal 1: autoint1.e
 Integration File signal 2: autoint2.e
 Quant Time: Nov 20 11:19:19 2018
 Quant Method : Z:\pestpcbsrv\HPCHEM1\ECD_D\Method\PD111918CLP.M
 Quant Title : GC Extractables
 QLast Update : Mon Nov 19 17:32:40 2018
 Response via : Initial Calibration
 Integrator: ChemStation 6890 Scale Mode: Large solvent peaks clipped

Volume Inj. : 1 µl
 Signal #1 Phase : ZB-MR2 Signal #2 Phase: ZB-MR1
 Signal #1 Info : 30M x 0.32mm x0.2 Signal #2 Info : 30M x 0.32mm x 0.50µm

	Compound	RT#1	RT#2	Resp#1	Resp#2	ng/ml	ng/ml

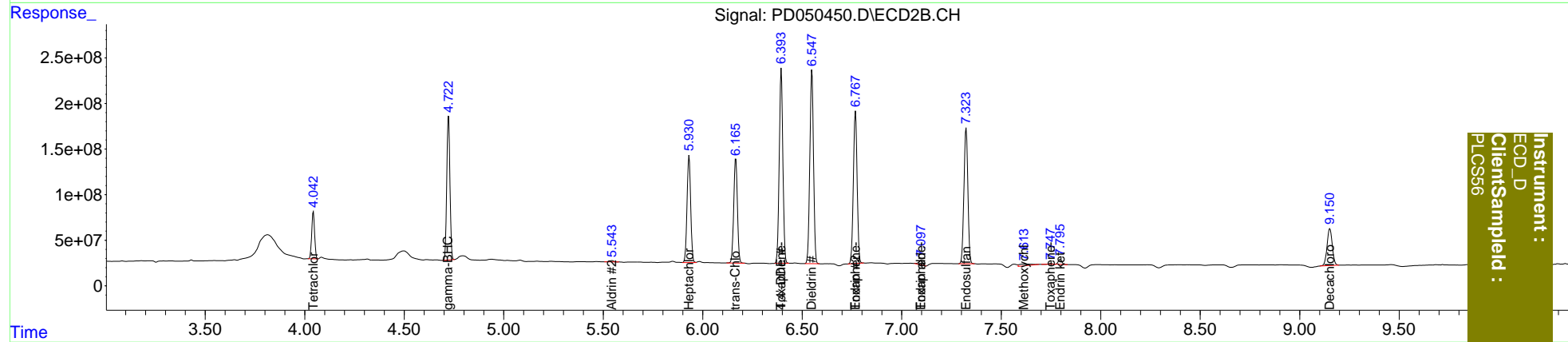
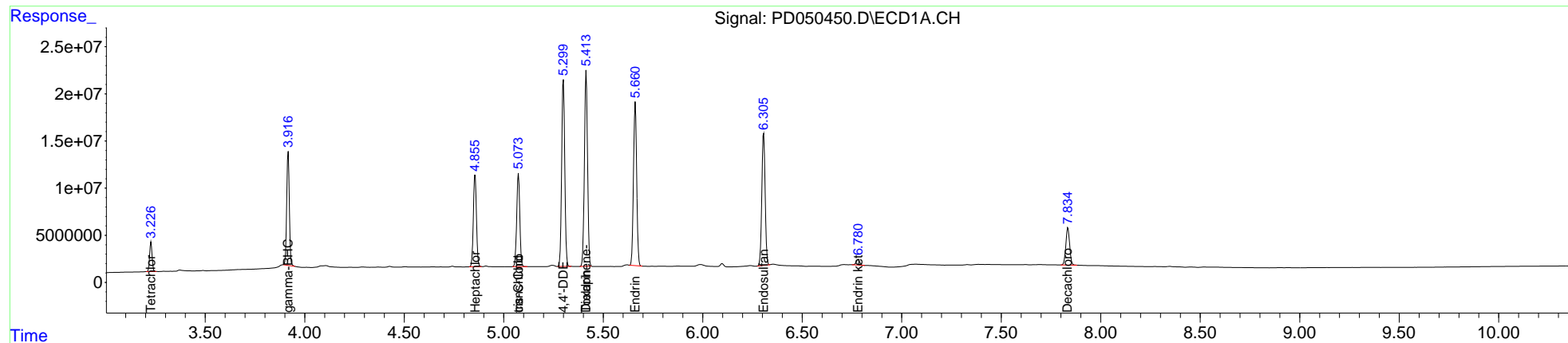
System Monitoring Compounds							
1)	SA Tetrachlo...	3.228	4.043	27197045	529.2E6	17.181	16.437
2)	SA Decachlor...	7.835	9.152	52985475	740.6E6	27.029	37.277 #
Target Compounds							
3)	MA gamma-BHC...	3.917	4.723	110.3E6	1739.5E6	46.113	39.677
5)	MB Aldrin	0.000	5.544	0	18197581	N.D.	0.482
8)	B Heptachlo...	4.856	5.931	105.5E6	1493.9E6	50.168	43.207
10)	B trans-Chl...	5.074	6.166	106.0E6	1472.3E6	48.694	42.987
11)	B cis-Chlor...	5.074f	0.000	106.0E6	0	49.810	N.D. #
12)	B 4,4'-DDE	5.300	6.395	215.1E6	2693.1E6	100.030	87.810
13)	MA Dieldrin	5.414	6.549	227.2E6	2735.2E6	91.784	82.462
14)	MA Endrin	5.661	6.768	194.2E6	2186.6E6	89.891	86.464
18)	B Endrin al...	0.000	7.097	0	70129478	N.D.	3.517
19)	B Endosulfa...	6.306	7.324	164.0E6	2031.0E6	84.772	88.047
20)	A Methoxychlor	0.000	7.616	0	76331804	N.D.	7.065
21)	B Endrin ke...	6.781	7.797	7178924	64870352	3.160	3.010
22)	Toxaphene-1	5.414	6.395	227.2E6	2693.1E6	18547.632	19163.651
23)	Toxaphene-2	0.000	6.768	0	2186.6E6	N.D.	13357.189
24)	Toxaphene-3	0.000	7.097	0	70129478	N.D.	304.490
26)	Toxaphene-5	0.000	7.749	0	8057510	N.D.	25.437

(f)=RT Delta > 1/2 Window (#)=Amounts differ by > 25% (m)=manual int.

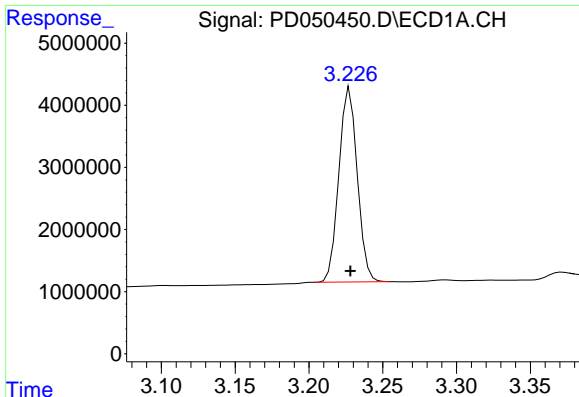
Data Path : Z:\pestpcbsrv\HPCHEM1\ECD_D\Data\PD112018\
 Data File : PD050450.D
 Signal(s) : Signal #1: ECD1A.CH Signal #2: ECD2B.CH
 Acq On : 20 Nov 2018 10:46
 Operator : AJ\SJ
 Sample : PB114956BS
 Misc :
 ALS Vial : 6 Sample Multiplier: 1

Integration File signal 1: autoint1.e
 Integration File signal 2: autoint2.e
 Quant Time: Nov 20 11:19:19 2018
 Quant Method : Z:\pestpcbsrv\HPCHEM1\ECD_D\Method\PD111918CLP.M
 Quant Title : GC Extractables
 QLast Update : Mon Nov 19 17:32:40 2018
 Response via : Initial Calibration
 Integrator: ChemStation 6890 Scale Mode: Large solvent peaks clipped

Volume Inj. : 1 µl
 Signal #1 Phase : ZB-MR2 Signal #2 Phase: ZB-MR1
 Signal #1 Info : 30M x 0.32mm x0.2 Signal #2 Info : 30M x 0.32mm x 0.50µm



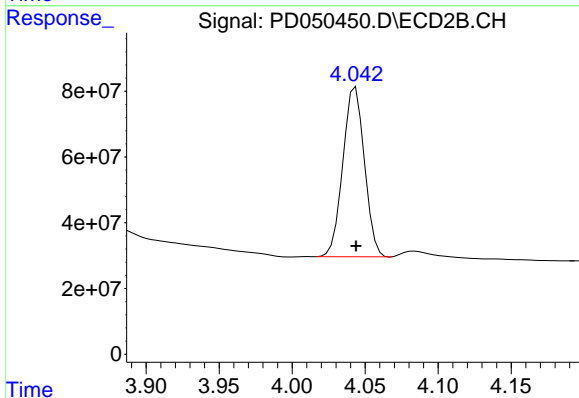
Instrument :
 ECD_D
 ClientSampleId :
 PLCS66



#1 Tetrachloro-m-xylene

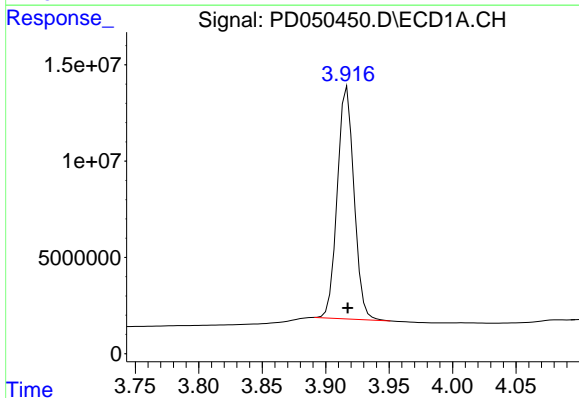
R.T.: 3.228 min
 Delta R.T.: 0.000 min
 Response: 27197045
 Conc: 17.18 ng/ml

Instrument :
 ECD_D
 ClientSampleId :
 PLCS56



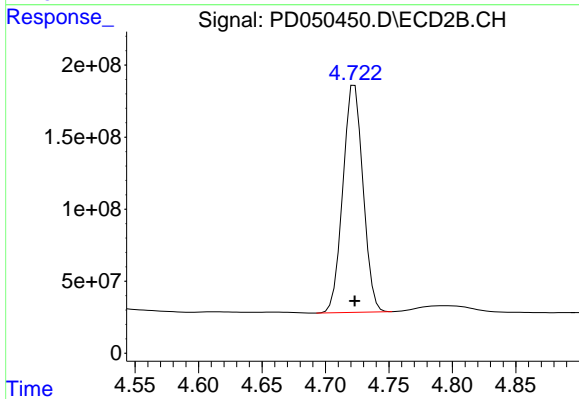
#1 Tetrachloro-m-xylene

R.T.: 4.043 min
 Delta R.T.: 0.000 min
 Response: 529245355
 Conc: 16.44 ng/ml



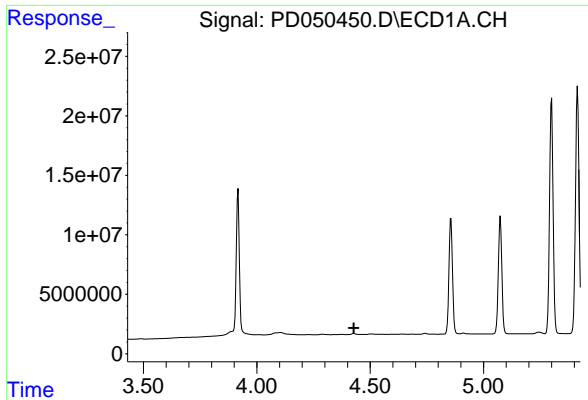
#3 gamma-BHC (Lindane)

R.T.: 3.917 min
 Delta R.T.: 0.000 min
 Response: 110339771
 Conc: 46.11 ng/ml



#3 gamma-BHC (Lindane)

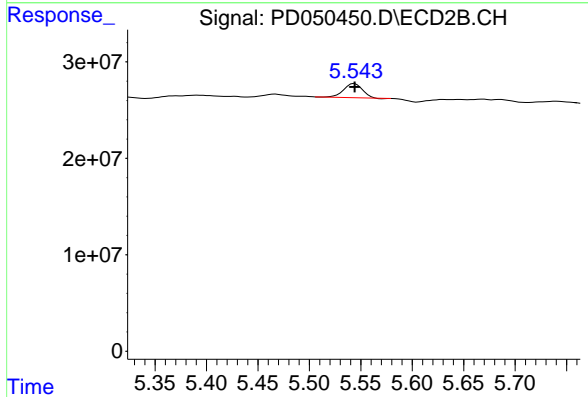
R.T.: 4.723 min
 Delta R.T.: 0.000 min
 Response: 1739542705
 Conc: 39.68 ng/ml



#5 Aldrin

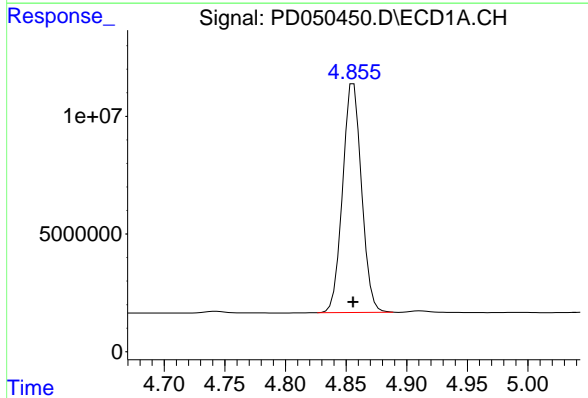
R.T.: 0.000 min
 Exp R.T.: 4.428 min
 Response: 0
 Conc: N.D.

Instrument :
 ECD_D
 ClientSampleId :
 PLCS56



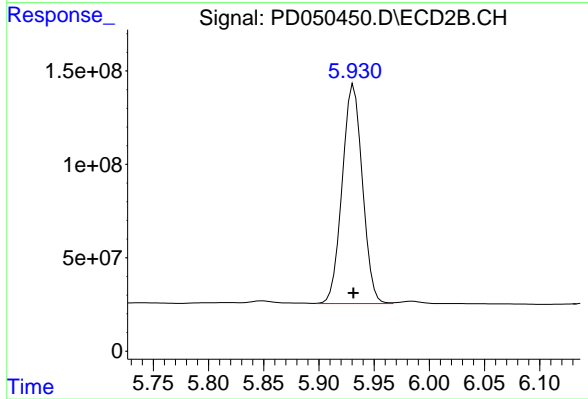
#5 Aldrin

R.T.: 5.544 min
 Delta R.T.: 0.000 min
 Response: 18197581
 Conc: 0.48 ng/ml



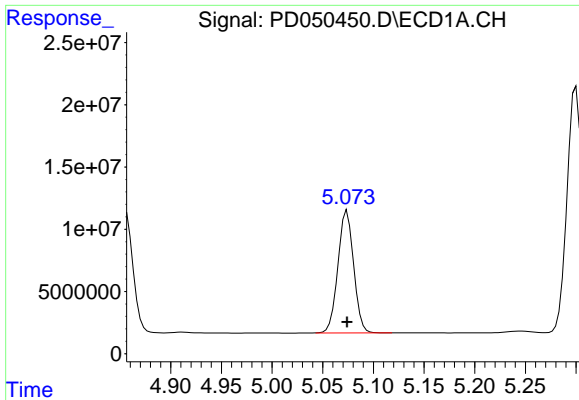
#8 Heptachlor epoxide

R.T.: 4.856 min
 Delta R.T.: 0.000 min
 Response: 105501771
 Conc: 50.17 ng/ml



#8 Heptachlor epoxide

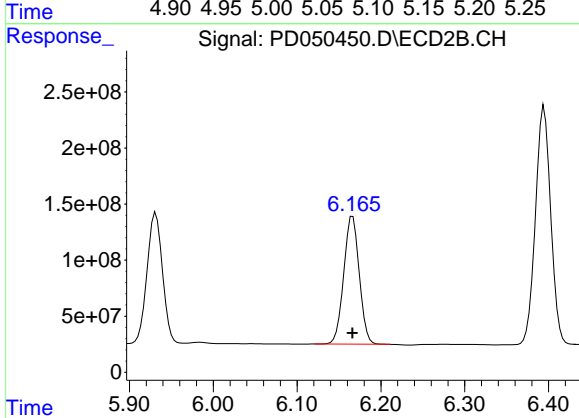
R.T.: 5.931 min
 Delta R.T.: 0.000 min
 Response: 1493875454
 Conc: 43.21 ng/ml



#10 trans-Chlordane

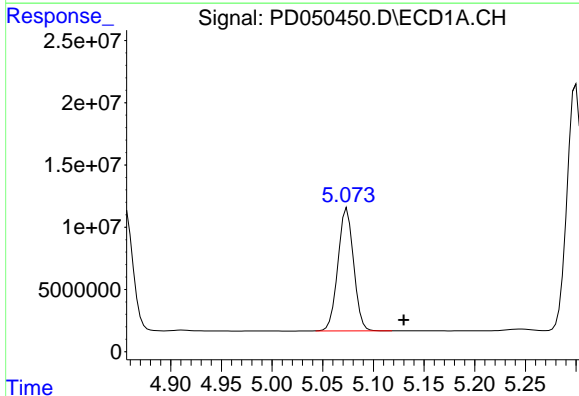
R.T.: 5.074 min
 Delta R.T.: 0.000 min
 Response: 105977516
 Conc: 48.69 ng/ml

Instrument :
 ECD_D
 ClientSampled :
 PLCS56



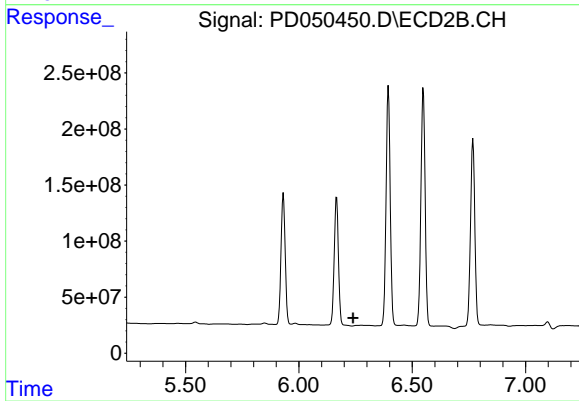
#10 trans-Chlordane

R.T.: 6.166 min
 Delta R.T.: 0.000 min
 Response: 1472320647
 Conc: 42.99 ng/ml



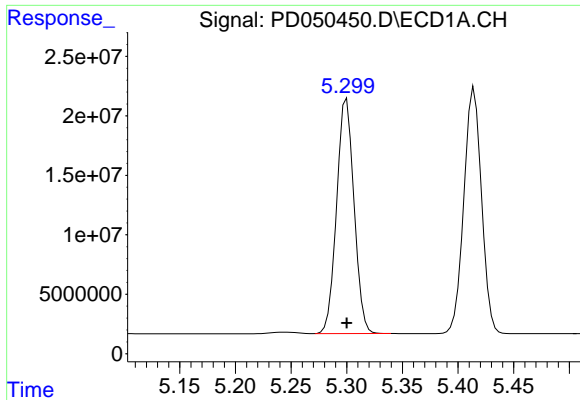
#11 cis-Chlordane

R.T.: 5.074 min
 Delta R.T.: -0.056 min
 Response: 105977516
 Conc: 49.81 ng/ml



#11 cis-Chlordane

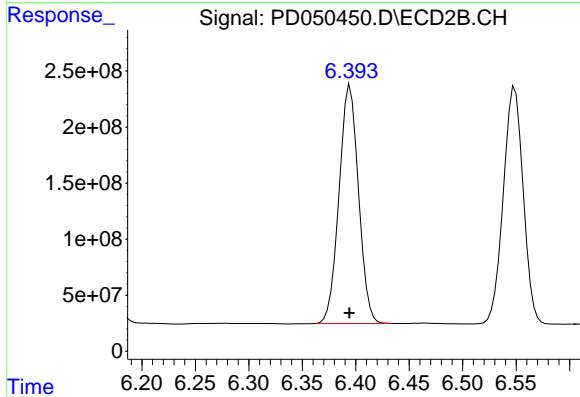
R.T.: 0.000 min
 Exp R.T. : 6.239 min
 Response: 0
 Conc: N.D.



#12 4,4'-DDE

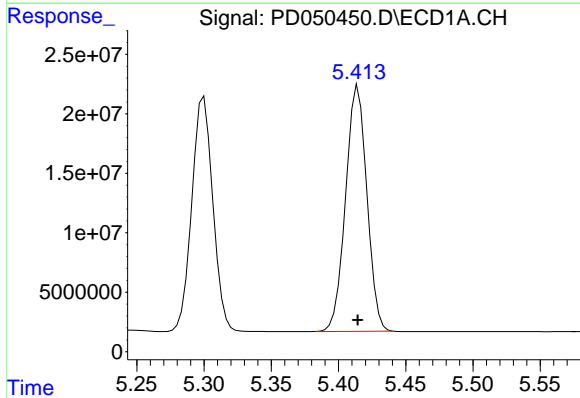
R.T.: 5.300 min
 Delta R.T.: 0.000 min
 Response: 215054203
 Conc: 100.03 ng/ml

Instrument :
 ECD_D
 ClientSampleId :
 PLCS56



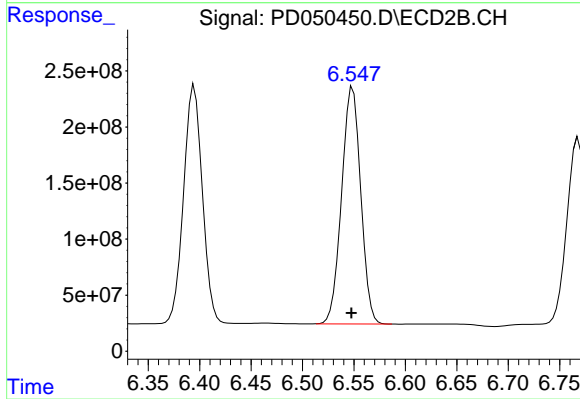
#12 4,4'-DDE

R.T.: 6.395 min
 Delta R.T.: 0.000 min
 Response: 2693104523
 Conc: 87.81 ng/ml



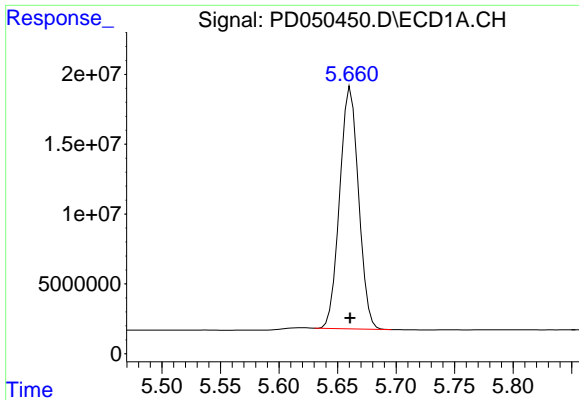
#13 Dieldrin

R.T.: 5.414 min
 Delta R.T.: 0.000 min
 Response: 227223203
 Conc: 91.78 ng/ml



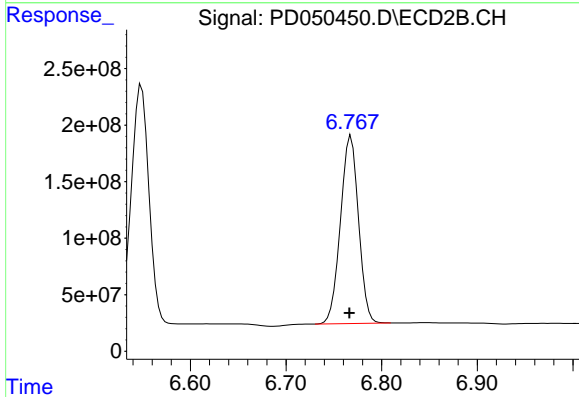
#13 Dieldrin

R.T.: 6.549 min
 Delta R.T.: 0.001 min
 Response: 2735178169
 Conc: 82.46 ng/ml

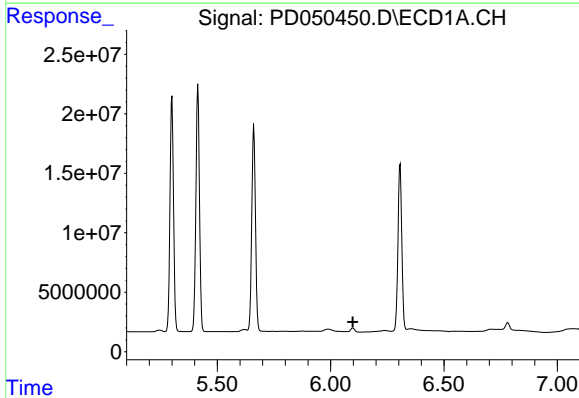


#14 Endrin
 R.T.: 5.661 min
 Delta R.T.: 0.000 min
 Response: 194168706
 Conc: 89.89 ng/ml

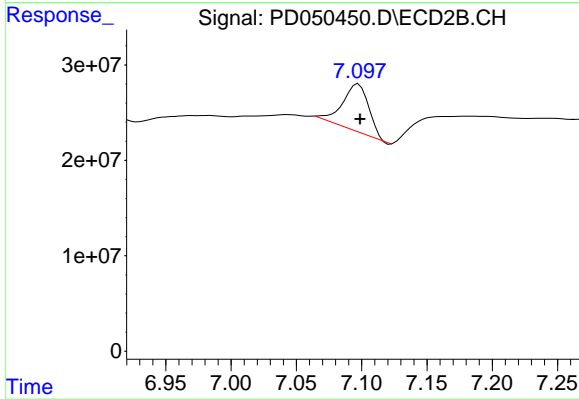
Instrument :
 ECD_D
 ClientSampled :
 PLCS56



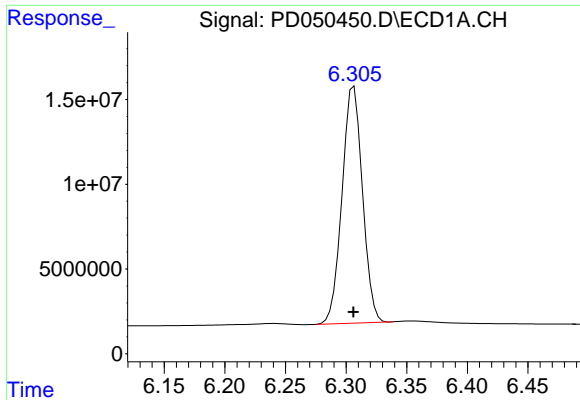
#14 Endrin
 R.T.: 6.768 min
 Delta R.T.: 0.002 min
 Response: 2186630455
 Conc: 86.46 ng/ml



#18 Endrin aldehyde
 R.T.: 0.000 min
 Exp R.T. : 6.097 min
 Response: 0
 Conc: N.D.



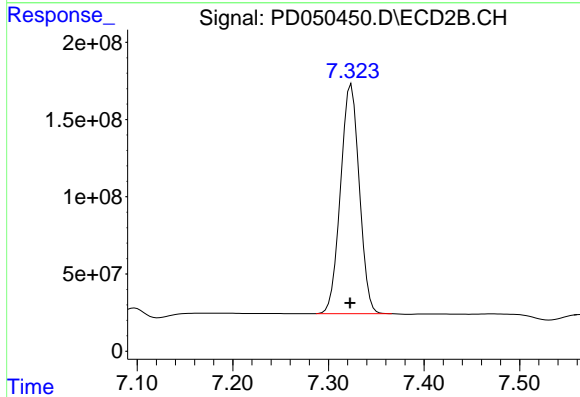
#18 Endrin aldehyde
 R.T.: 7.097 min
 Delta R.T.: -0.001 min
 Response: 70129478
 Conc: 3.52 ng/ml



#19 Endosulfan Sulfate

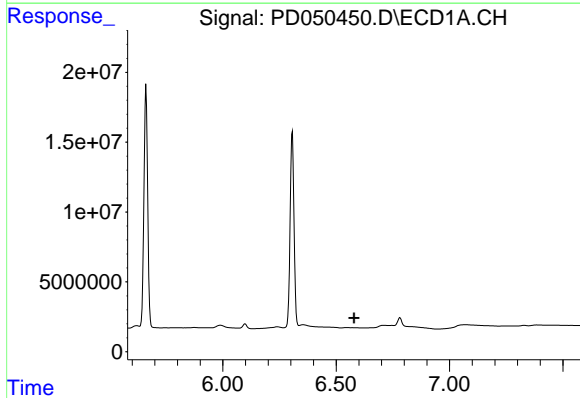
R.T.: 6.306 min
 Delta R.T.: 0.000 min
 Response: 164033509
 Conc: 84.77 ng/ml

Instrument :
 ECD_D
 ClientSampled :
 PLCS56



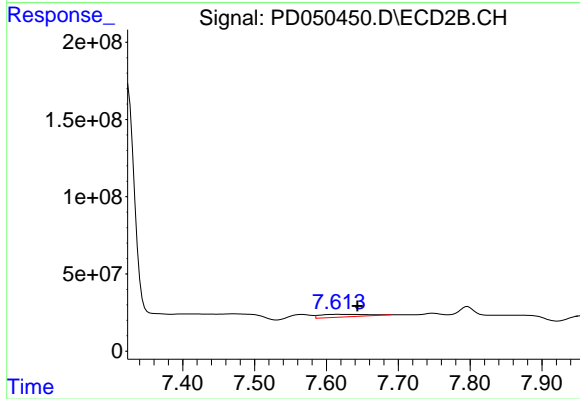
#19 Endosulfan Sulfate

R.T.: 7.324 min
 Delta R.T.: 0.001 min
 Response: 2031033266
 Conc: 88.05 ng/ml



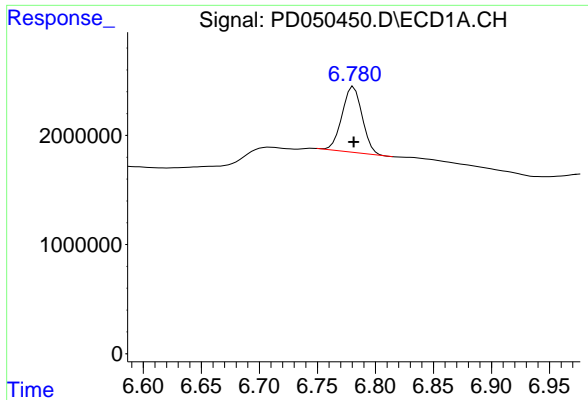
#20 Methoxychlor

R.T.: 0.000 min
 Exp R.T. : 6.579 min
 Response: 0
 Conc: N.D.



#20 Methoxychlor

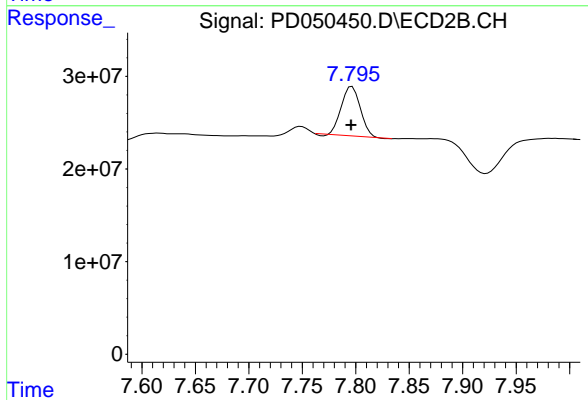
R.T.: 7.616 min
 Delta R.T.: -0.027 min
 Response: 76331804
 Conc: 7.06 ng/ml



#21 Endrin ketone

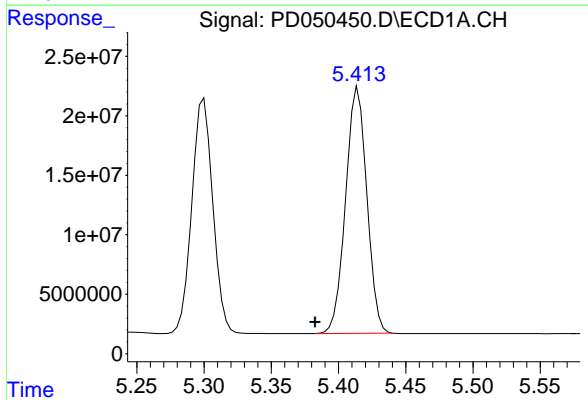
R.T.: 6.781 min
 Delta R.T.: 0.000 min
 Response: 7178924
 Conc: 3.16 ng/ml

Instrument :
 ECD_D
 ClientSampled :
 PLCS56



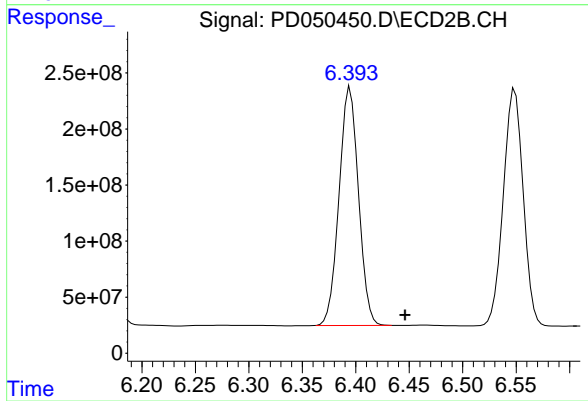
#21 Endrin ketone

R.T.: 7.797 min
 Delta R.T.: 0.000 min
 Response: 64870352
 Conc: 3.01 ng/ml



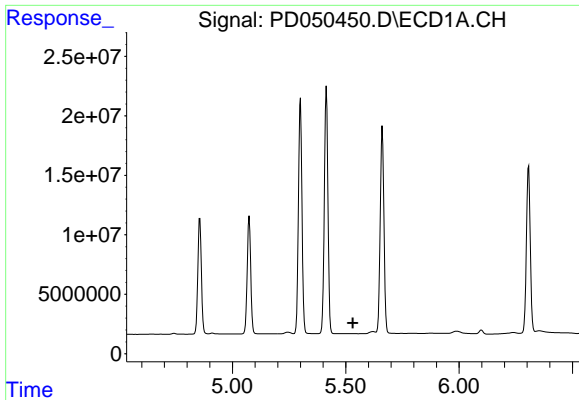
#22 Toxaphene-1

R.T.: 5.414 min
 Delta R.T.: 0.032 min
 Response: 227223203
 Conc: 18547.63 ng/ml



#22 Toxaphene-1

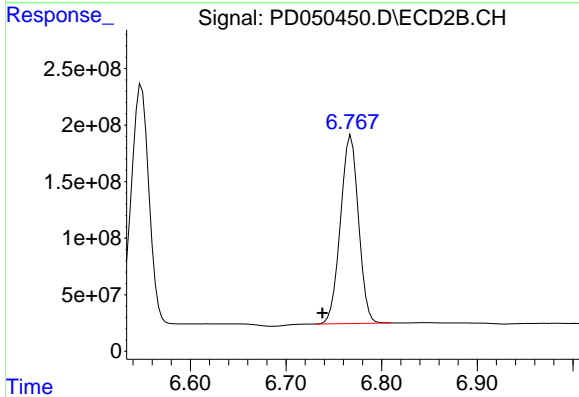
R.T.: 6.395 min
 Delta R.T.: -0.051 min
 Response: 2693104523
 Conc: 19163.65 ng/ml



#23 Toxaphene-2

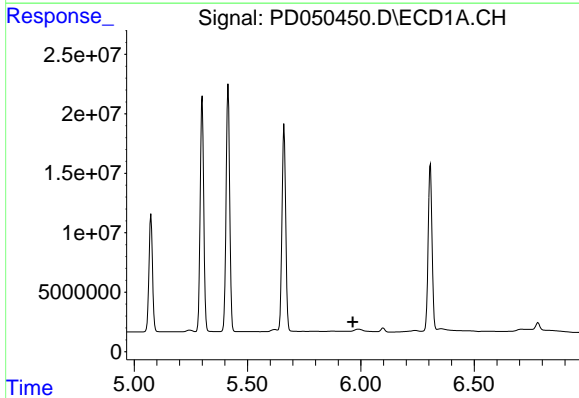
R.T.: 0.000 min
 Exp R.T. : 5.532 min
 Response: 0
 Conc: N.D.

Instrument :
 ECD_D
 ClientSampled :
 PLCS56



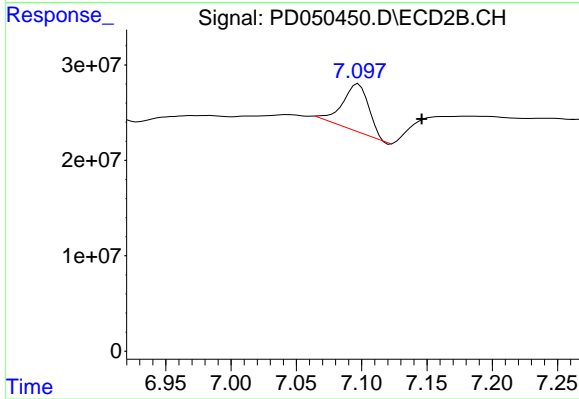
#23 Toxaphene-2

R.T.: 6.768 min
 Delta R.T.: 0.030 min
 Response: 2186630455
 Conc: 13357.19 ng/ml



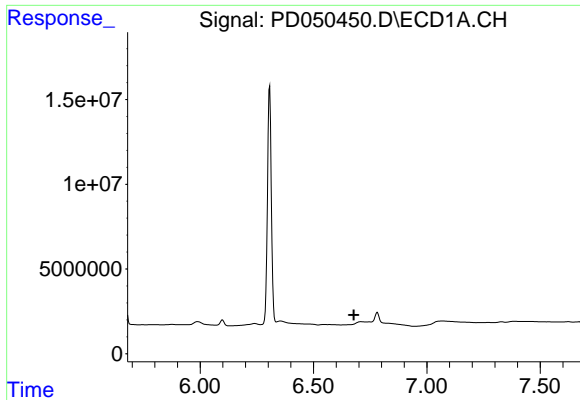
#24 Toxaphene-3

R.T.: 0.000 min
 Exp R.T. : 5.964 min
 Response: 0
 Conc: N.D.



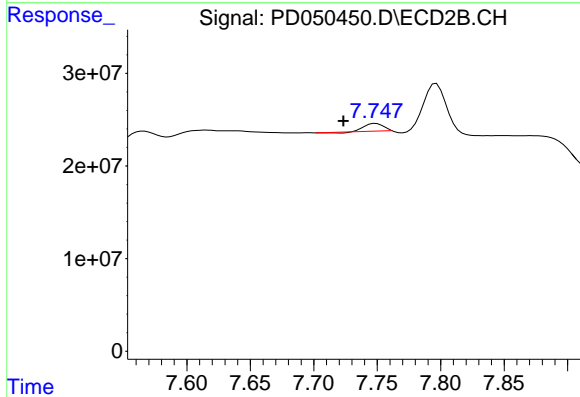
#24 Toxaphene-3

R.T.: 7.097 min
 Delta R.T.: -0.049 min
 Response: 70129478
 Conc: 304.49 ng/ml

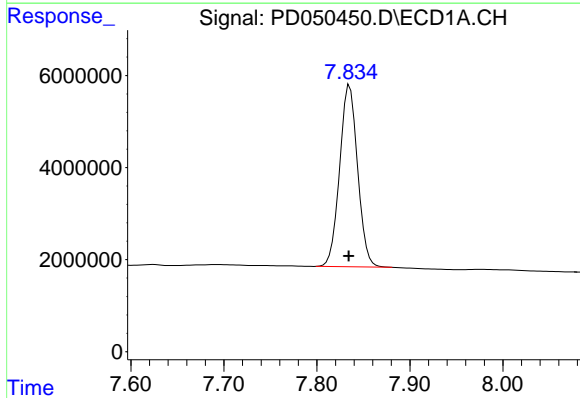


#26 Toxaphene-5
 R.T.: 0.000 min
 Exp R.T.: 6.677 min
 Response: 0
 Conc: N.D.

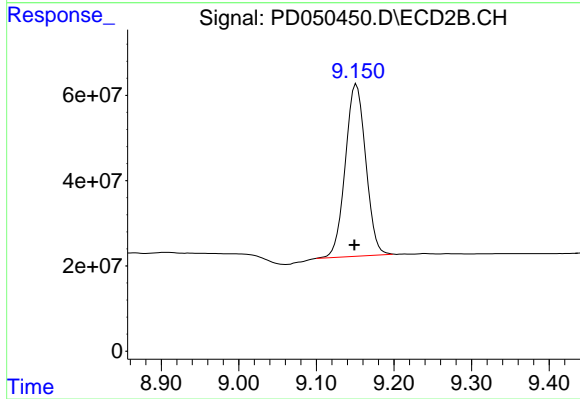
Instrument :
 ECD_D
 ClientSampled :
 PLCS56



#26 Toxaphene-5
 R.T.: 7.749 min
 Delta R.T.: 0.025 min
 Response: 8057510
 Conc: 25.44 ng/ml



#27 Decachlorobiphenyl
 R.T.: 7.835 min
 Delta R.T.: 0.001 min
 Response: 52985475
 Conc: 27.03 ng/ml



#27 Decachlorobiphenyl
 R.T.: 9.152 min
 Delta R.T.: 0.003 min
 Response: 740636267
 Conc: 37.28 ng/ml