

Data Path : Z:\pestpcbsrv\HPCHEM1\ECD_D\Data\PD112019\
 Data File : PD056141.D
 Signal(s) : Signal #1: ECD1A.ch Signal #2: ECD2B.ch
 Acq On : 20 Nov 2019 22:00
 Operator : SG\AJ
 Sample : K5888-20
 Misc :
 ALS Vial : 38 Sample Multiplier: 1

Instrument :
 ECD_D
 ClientSampleId :
 JLLR3

Integration File signal 1: autoint1.e
 Integration File signal 2: autoint2.e
 Quant Time: Nov 21 01:00:36 2019
 Quant Method : Z:\pestpcbsrv\HPCHEM1\ECD_D\Method\PD110319CLP.M
 Quant Title : GC Extractables
 QLast Update : Sat Nov 02 07:20:38 2019
 Response via : Initial Calibration
 Integrator: ChemStation

Volume Inj. : 1 µl
 Signal #1 Phase : ZB-MR2 Signal #2 Phase: ZB-MR1
 Signal #1 Info : 30M x 0.32mm x 0.2 Signal #2 Info : 30M x 0.32mm x 0.50µm

	Compound	RT#1	RT#2	Resp#1	Resp#2	ng/ml	ng/ml

System Monitoring Compounds							
1)	SA Tetrachlo...	3.289	3.962	13428748	18951117	17.839	18.084
27)	SA Decachlor...	7.962	8.997	21420221	25914879	26.279	22.821
Target Compounds							
3)	MA gamma-BHC...	0.000	4.596f	0	46694	N.D.	<MDL
10)	B trans-Chl...	0.000	6.022f	0	370241	N.D.	0.260
11)	B cis-Chlor...	0.000	6.106	0	217179	N.D.	0.155
13)	MA Dieldrin	0.000	6.370f	0	39517	N.D.	<MDL
15)	B Endosulfa...	0.000	6.873	0	806487	N.D.	0.623
16)	A 4,4'-DDD	0.000	6.736f	0	650939	N.D.	0.583
17)	MA 4,4'-DDT	0.000	7.070	0	267331	N.D.	0.246
19)	B Endosulfa...	0.000	7.239	0	91103	N.D.	<MDL
20)	A Methoxychlor	0.000	7.535	0	32515	N.D.	<MDL
21)	B Endrin ke...	0.000	7.616f	0	108966	N.D.	<MDL
22)	Toxaphene-1	0.000	6.370	0	39517	N.D.	3.849
24)	Toxaphene-3	0.000	7.070	0	267331	N.D.	14.425
25)	Toxaphene-4	0.000	7.070	0	267331	N.D.	5.189
26)	Toxaphene-5	0.000	7.616	0	108966	N.D.	4.484

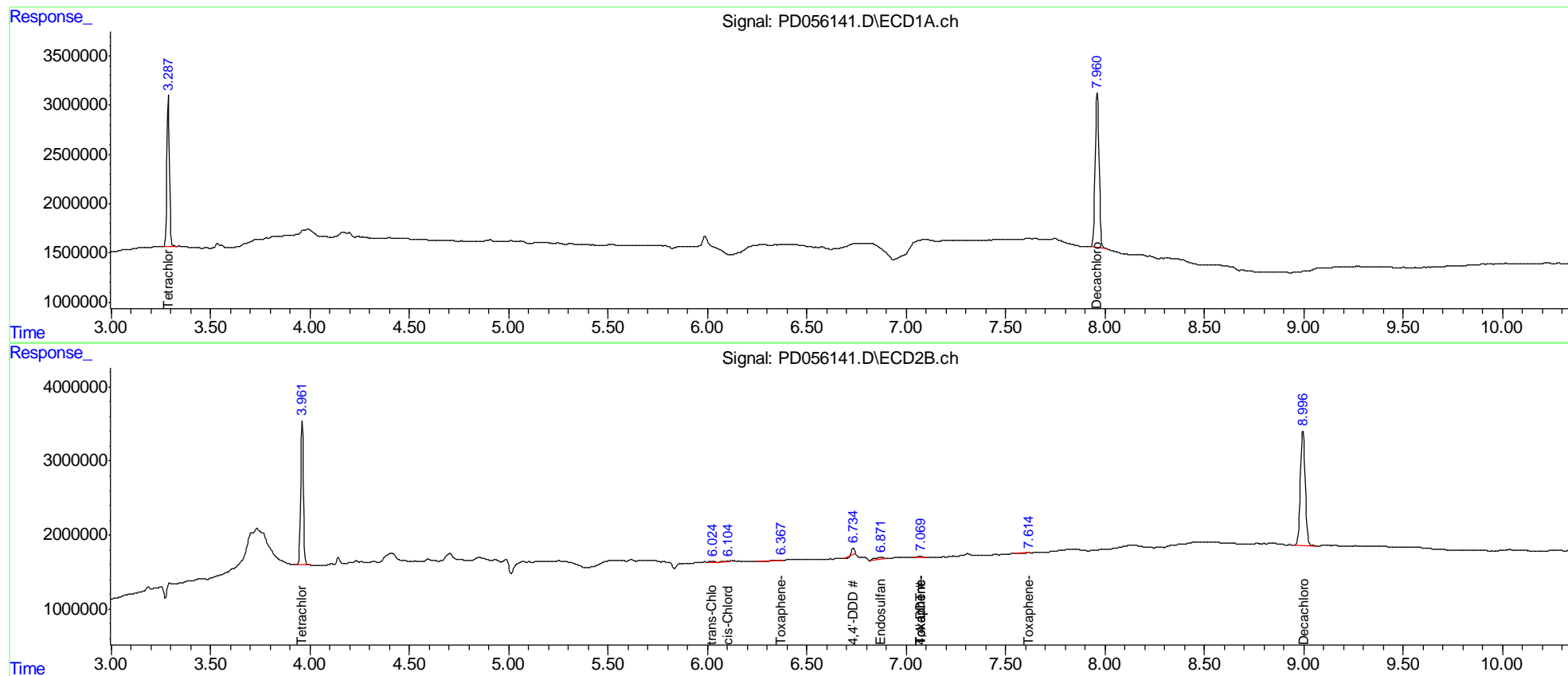
(f)=RT Delta > 1/2 Window (#)=Amounts differ by > 25% (m)=manual int.

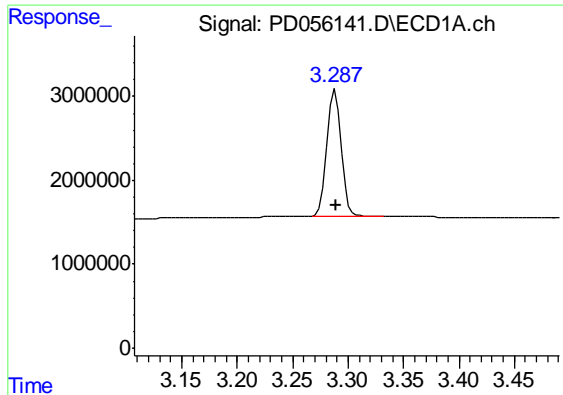
Data Path : Z:\pestpcbsrv\HPCHEM1\ECD_D\Data\PD112019\
 Data File : PD056141.D
 Signal(s) : Signal #1: ECD1A.ch Signal #2: ECD2B.ch
 Acq On : 20 Nov 2019 22:00
 Operator : SG\AJ
 Sample : K5888-20
 Misc :
 ALS Vial : 38 Sample Multiplier: 1

Instrument :
 ECD_D
 ClientSampleId :
 JLLR3

Integration File signal 1: autoint1.e
 Integration File signal 2: autoint2.e
 Quant Time: Nov 21 01:00:36 2019
 Quant Method : Z:\pestpcbsrv\HPCHEM1\ECD_D\Method\PD110319CLP.M
 Quant Title : GC Extractables
 QLast Update : Sat Nov 02 07:20:38 2019
 Response via : Initial Calibration
 Integrator: ChemStation

Volume Inj. : 1 µl
 Signal #1 Phase : ZB-MR2 Signal #2 Phase: ZB-MR1
 Signal #1 Info : 30M x 0.32mm x0.2 Signal #2 Info : 30M x 0.32mm x 0.50µm

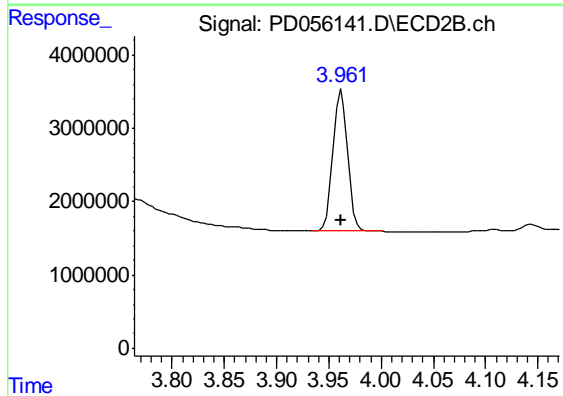




#1 Tetrachloro-m-xylene

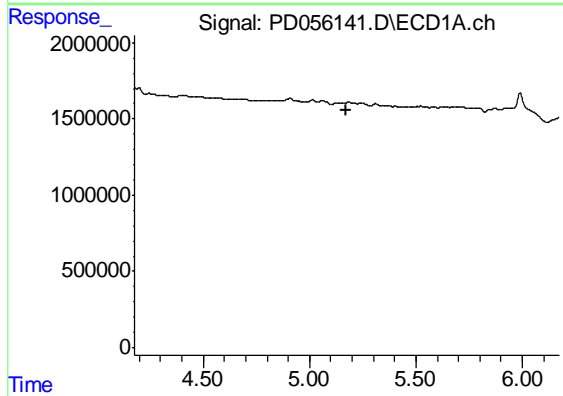
R.T.: 3.289 min
 Delta R.T.: 0.000 min
 Response: 13428748
 Conc: 17.84 ng/ml

Instrument :
 ECD_D
 ClientSampleId :
 JLLR3



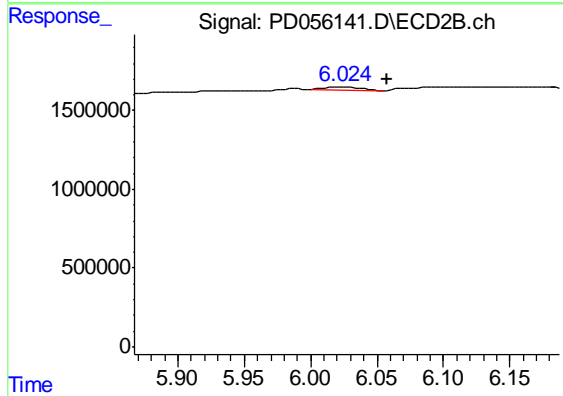
#1 Tetrachloro-m-xylene

R.T.: 3.962 min
 Delta R.T.: 0.000 min
 Response: 18951117
 Conc: 18.08 ng/ml



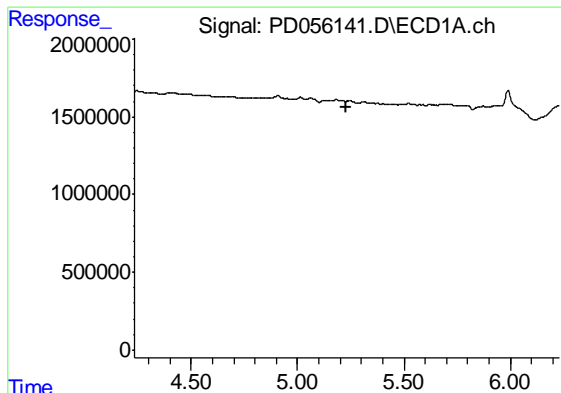
#10 trans-Chlordane

R.T.: 0.000 min
 Exp R.T. : 5.174 min
 Response: 0
 Conc: N.D.



#10 trans-Chlordane

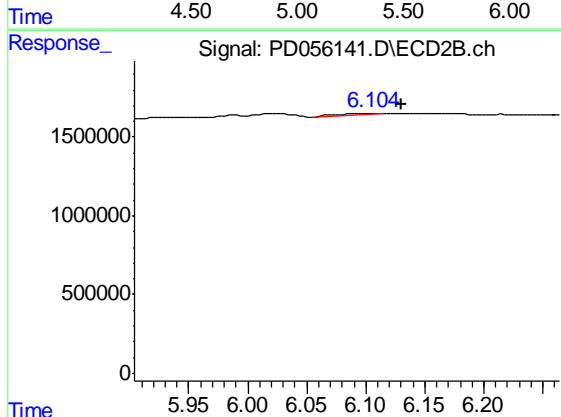
R.T.: 6.022 min
 Delta R.T.: -0.036 min
 Response: 370241
 Conc: 0.26 ng/ml



#11 cis-Chlordane

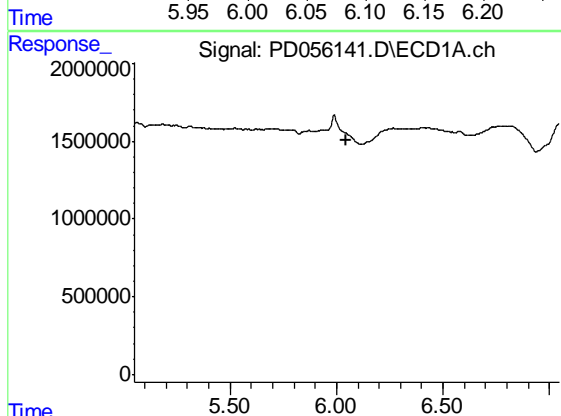
R.T.: 0.000 min
 Exp R.T. : 5.231 min
 Response: 0
 Conc: N.D.

Instrument :
 ECD_D
 ClientSampleId :
 JLLR3



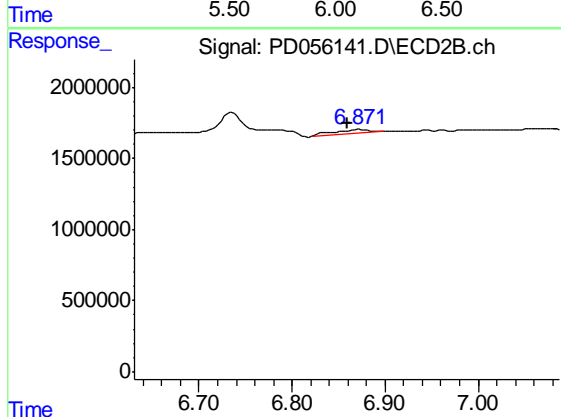
#11 cis-Chlordane

R.T.: 6.106 min
 Delta R.T.: -0.024 min
 Response: 217179
 Conc: 0.15 ng/ml



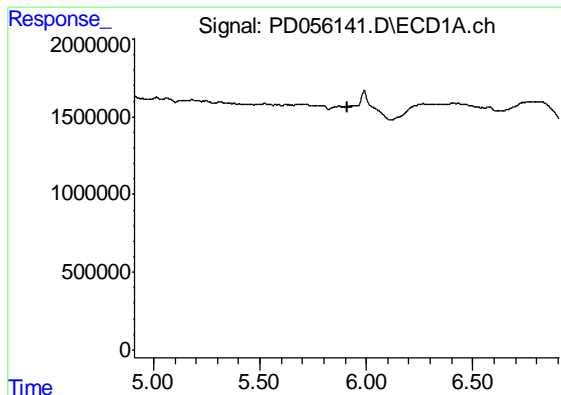
#15 Endosulfan II

R.T.: 0.000 min
 Exp R.T. : 6.049 min
 Response: 0
 Conc: N.D.



#15 Endosulfan II

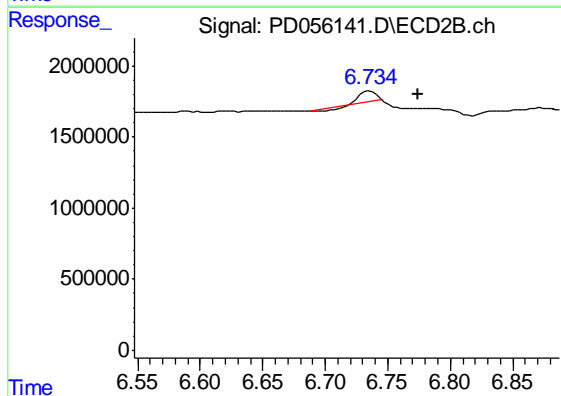
R.T.: 6.873 min
 Delta R.T.: 0.013 min
 Response: 806487
 Conc: 0.62 ng/ml



#16 4,4'-DDD

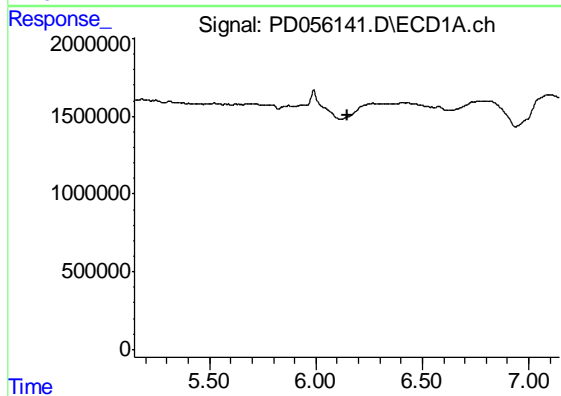
R.T.: 0.000 min
 Exp R.T. : 5.911 min
 Response: 0
 Conc: N.D.

Instrument :
 ECD_D
 ClientSampleId :
 JLLR3



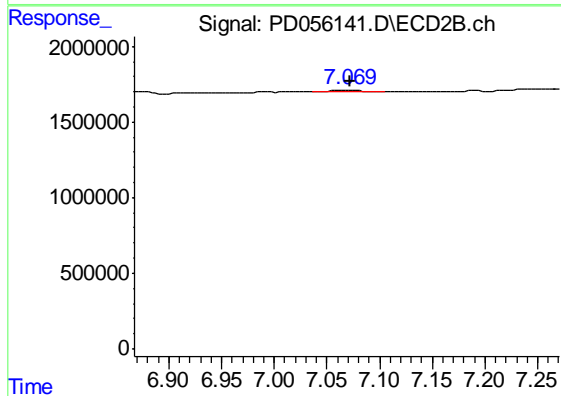
#16 4,4'-DDD

R.T.: 6.736 min
 Delta R.T.: -0.039 min
 Response: 650939
 Conc: 0.58 ng/ml



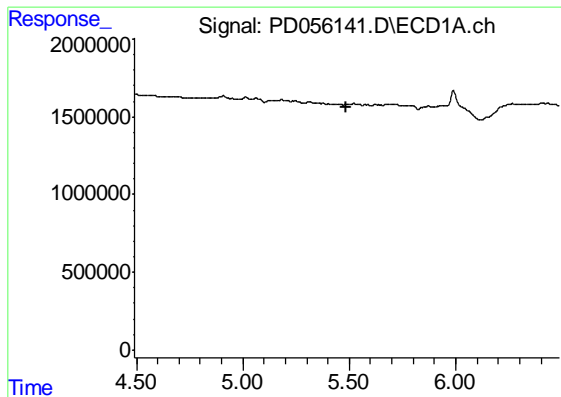
#17 4,4'-DDT

R.T.: 0.000 min
 Exp R.T. : 6.146 min
 Response: 0
 Conc: N.D.



#17 4,4'-DDT

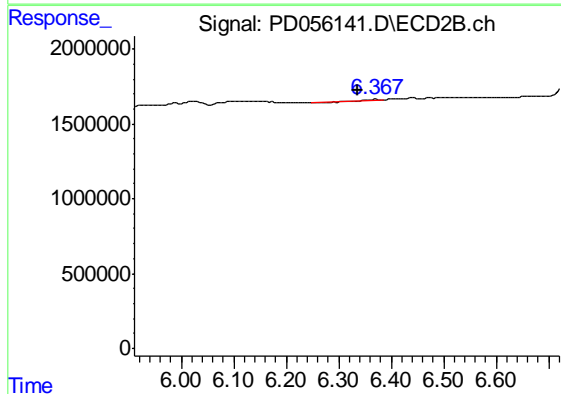
R.T.: 7.070 min
 Delta R.T.: -0.002 min
 Response: 267331
 Conc: 0.25 ng/ml



#22 Toxaphene-1

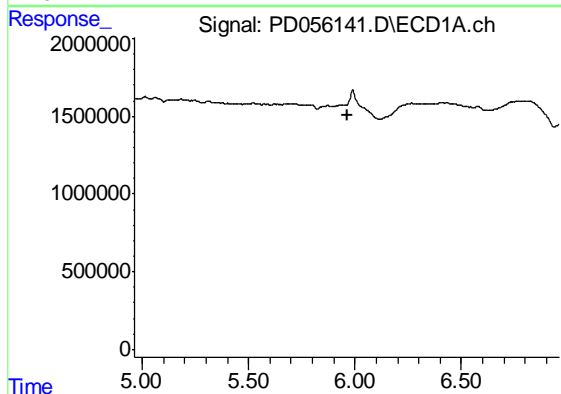
R.T.: 0.000 min
 Exp R.T. : 5.488 min
 Response: 0
 Conc: N.D.

Instrument :
 ECD_D
 ClientSampleId :
 JLLR3



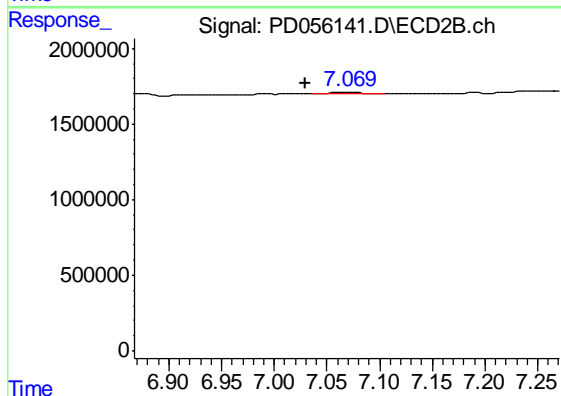
#22 Toxaphene-1

R.T.: 6.370 min
 Delta R.T.: 0.034 min
 Response: 39517
 Conc: 3.85 ng/ml



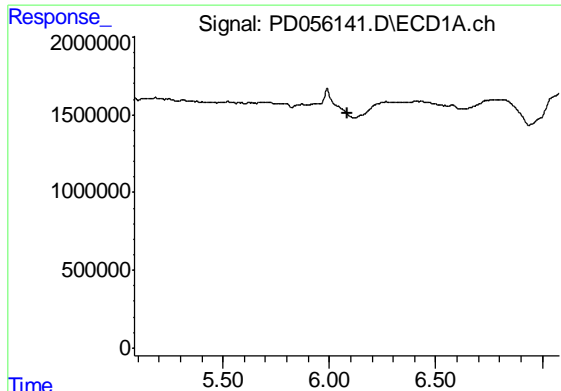
#24 Toxaphene-3

R.T.: 0.000 min
 Exp R.T. : 5.964 min
 Response: 0
 Conc: N.D.



#24 Toxaphene-3

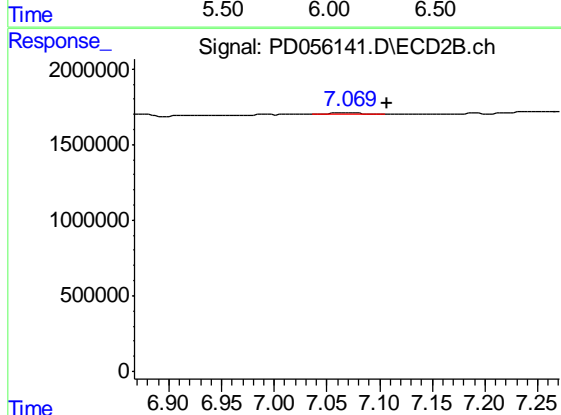
R.T.: 7.070 min
 Delta R.T.: 0.040 min
 Response: 267331
 Conc: 14.43 ng/ml



#25 Toxaphene-4

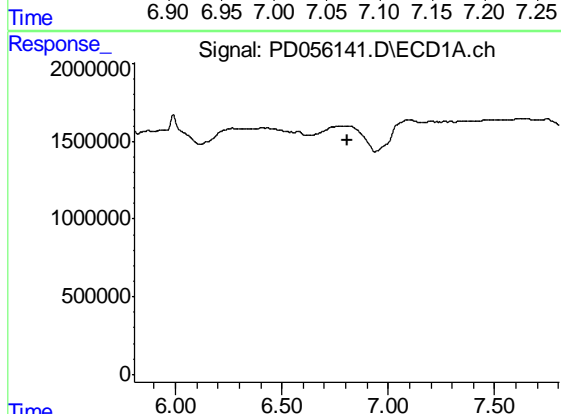
R.T.: 0.000 min
 Exp R.T. : 6.082 min
 Response: 0
 Conc: N.D.

Instrument :
 ECD_D
 ClientSampled :
 JLLR3



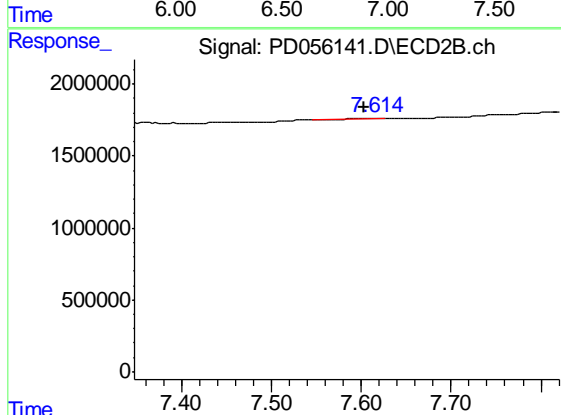
#25 Toxaphene-4

R.T.: 7.070 min
 Delta R.T.: -0.037 min
 Response: 267331
 Conc: 5.19 ng/ml



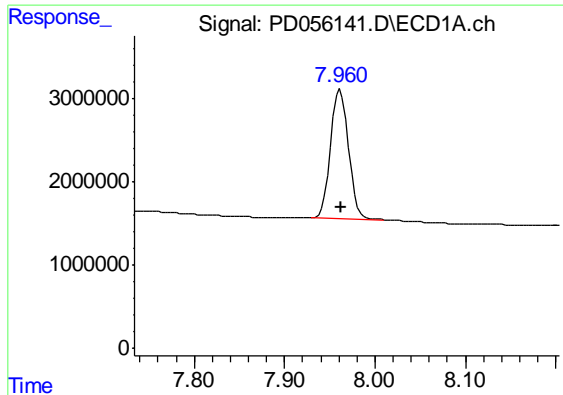
#26 Toxaphene-5

R.T.: 0.000 min
 Exp R.T. : 6.807 min
 Response: 0
 Conc: N.D.



#26 Toxaphene-5

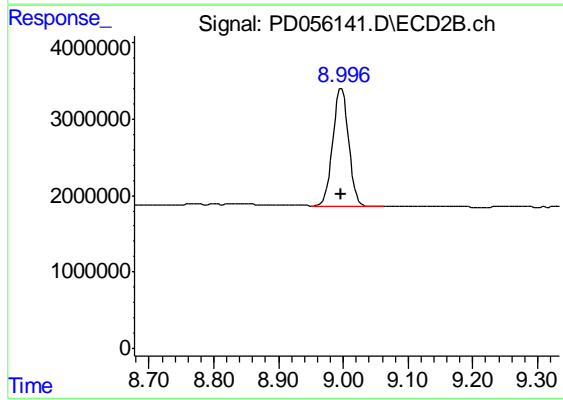
R.T.: 7.616 min
 Delta R.T.: 0.013 min
 Response: 108966
 Conc: 4.48 ng/ml



#27 Decachlorobiphenyl

R.T.: 7.962 min
Delta R.T.: -0.001 min
Response: 21420221
Conc: 26.28 ng/ml

Instrument :
ECD_D
ClientSampleId :
JLLR3



#27 Decachlorobiphenyl

R.T.: 8.997 min
Delta R.T.: 0.000 min
Response: 25914879
Conc: 22.82 ng/ml