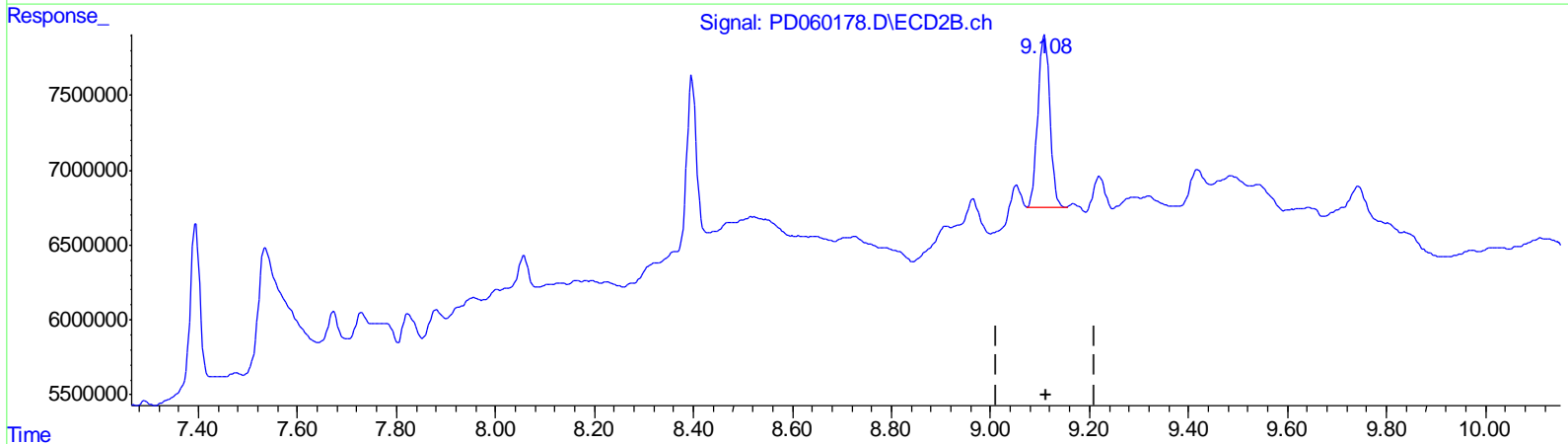
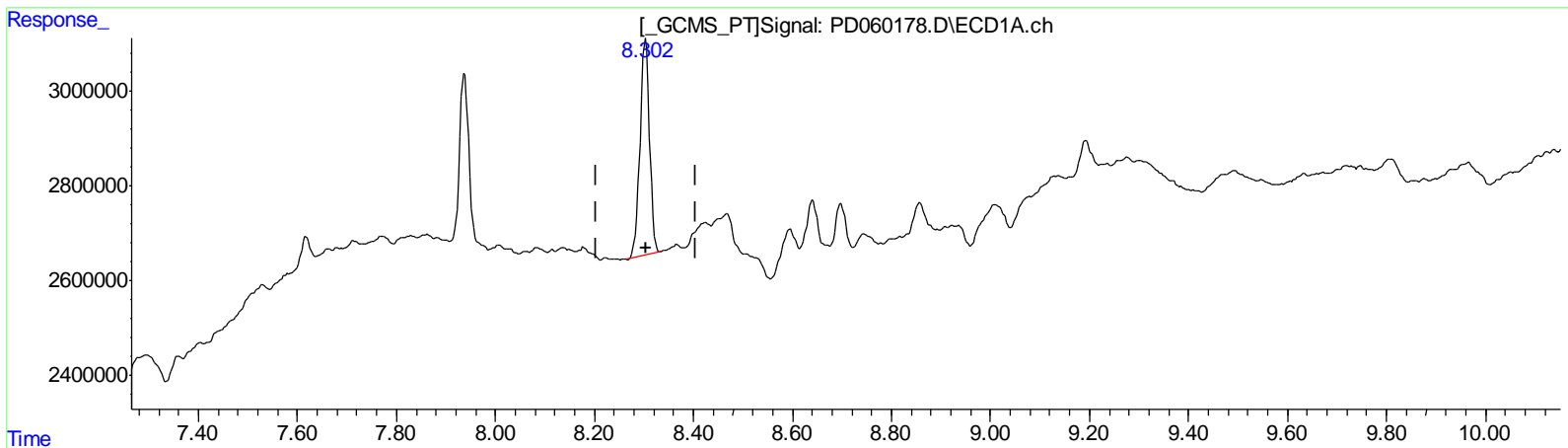


Data Path : Z:\pestpcbsrv\HPCHEM1\ECD_D\Data\PD112020\
 Data File : PD060178.D
 Signal(s) : Signal #1: ECD1A.ch Signal #2: ECD2B.ch
 Acq On : 20 Nov 2020 17:59
 Operator : DD\AJ
 Sample : L4711-19
 Misc :
 ALS Vial : 29 Sample Multiplier: 1

Integration File signal 1: autoint1.e
 Integration File signal 2: autoint2.e
 Quant Time: Nov 21 01:16:41 2020
 Quant Method : Z:\pestpcbsrv\HPCHEM1\ECD_D\Method\PD110320CLP.M
 Quant Title : GC Extractables
 QLast Update : Wed Nov 04 04:05:33 2020
 Response via : Initial Calibration
 Integrator: ChemStation

Volume Inj. : 1 µl
 Signal #1 Phase : ZB-MR2 Signal #2 Phase: ZB-MR1
 Signal #1 Info : 30M x 0.32mm x0.2 Signal #2 Info : 30M x 0.32mm x 0.50µm



QEdit

(27) Decachlorobiphenyl (SA)

8.303min 7.424 ng/ml

response 6168742

(27) Decachlorobiphenyl #2 (SA)

9.108min 7.938 ng/ml m

response 19527173

(+) = Expected Retention Time