

Data Path : Z:\pestpcbsrv\HPCHEM1\ECD_D\Data\PD112020\
 Data File : PD060172.D
 Signal(s) : Signal #1: ECD1A.ch Signal #2: ECD2B.ch
 Acq On : 20 Nov 2020 15:58
 Operator : DD\AJ
 Sample : L4711-08
 Misc :
 ALS Vial : 25 Sample Multiplier: 1

Instrument :
 ECD_D
 ClientSampleId :
 C0B33

Integration File signal 1: autoint1.e
 Integration File signal 2: autoint2.e
 Quant Time: Nov 21 01:14:06 2020
 Quant Method : Z:\pestpcbsrv\HPCHEM1\ECD_D\Method\PD110320CLP.M
 Quant Title : GC Extractables
 QLast Update : Wed Nov 04 04:05:33 2020
 Response via : Initial Calibration
 Integrator: ChemStation

Volume Inj. : 1 µl
 Signal #1 Phase : ZB-MR2 Signal #2 Phase: ZB-MR1
 Signal #1 Info : 30M x 0.32mm x0.2 Signal #2 Info : 30M x 0.32mm x 0.50µm

Compound	RT#1	RT#2	Resp#1	Resp#2	ng/ml	ng/ml

System Monitoring Compounds						
1) SA Tetrachlo...	3.505	4.024	8155023	27804645	9.516	9.328
27) SA Decachlor...	8.298	9.108	14133254	12377163	17.010	5.031 #
Target Compounds						
2) A alpha-BHC	3.971	4.383f	723103	4054987	0.563	0.910 #
3) MA gamma-BHC...	4.237	4.680	4986482	23557304	4.079	5.821 #
4) MA Heptachlor	4.540	5.211	6047682	26804979	5.153	6.761 #
5) MB Aldrin	4.795	0.000	177855	0	0.155	N.D. #
6) B beta-BHC	4.450f	4.896f	1800090	-3609989	3.397	N.D. #
7) B delta-BHC	4.695	0.000	1621159	0	1.290	N.D. #
8) B Heptachlor...	5.238	5.894	9332384	92781094	8.835	28.169 #
9) A Endosulfan I	5.600	6.298	13018190	49489793	12.799	15.441
10) B trans-Chl...	5.468	6.138	82258659	558.6E6	77.448	162.589 #
11) B cis-Chlor...	5.525	6.214	99167194	879.5E6	93.743	256.150 #
12) B 4,4'-DDE	5.690	6.367	101.7E6	359.2E6	99.530	111.093
13) MA Dieldrin	5.824	6.520	5783364	38553626	5.308	11.041 #
14) MA Endrin	6.083	6.731	9916054	-3480011	10.992	N.D. #
15) B Endosulfa...	6.370	6.955	42349980	6450709	46.963	2.282 #
16) A 4,4'-DDD	6.216	6.876	-1560856	16566223	N.D.	6.175
17) MA 4,4'-DDT	6.453	7.157	50446683	182.6E6	56.129	67.100
18) B Endrin al...	6.507	7.060	1619125	-3444792	2.175	N.D. #
19) B Endosulfa...	6.756	7.295	2558032	7854648	2.927	2.725
20) A Methoxychlor	6.986	7.594	1470903	3153795	3.456	2.244 #
21) B Endrin ke...	7.296f	7.728f	9779430	16629710	9.831	5.702 #
22) Toxaphene-1	5.790	6.442	-3578175	65337851	N.D.	4271.087
23) Toxaphene-2	5.950	6.731	9921000	-3480011	1571.567	N.D. #
24) Toxaphene-3	6.276	7.157	2897656	182.6E6	410.427	6584.168 #
25) Toxaphene-4	6.370	7.157	42349980	182.6E6	2641.354	2407.765
26) Toxaphene-5	7.175	7.672	13237279	43576584	782.660	1281.662 #

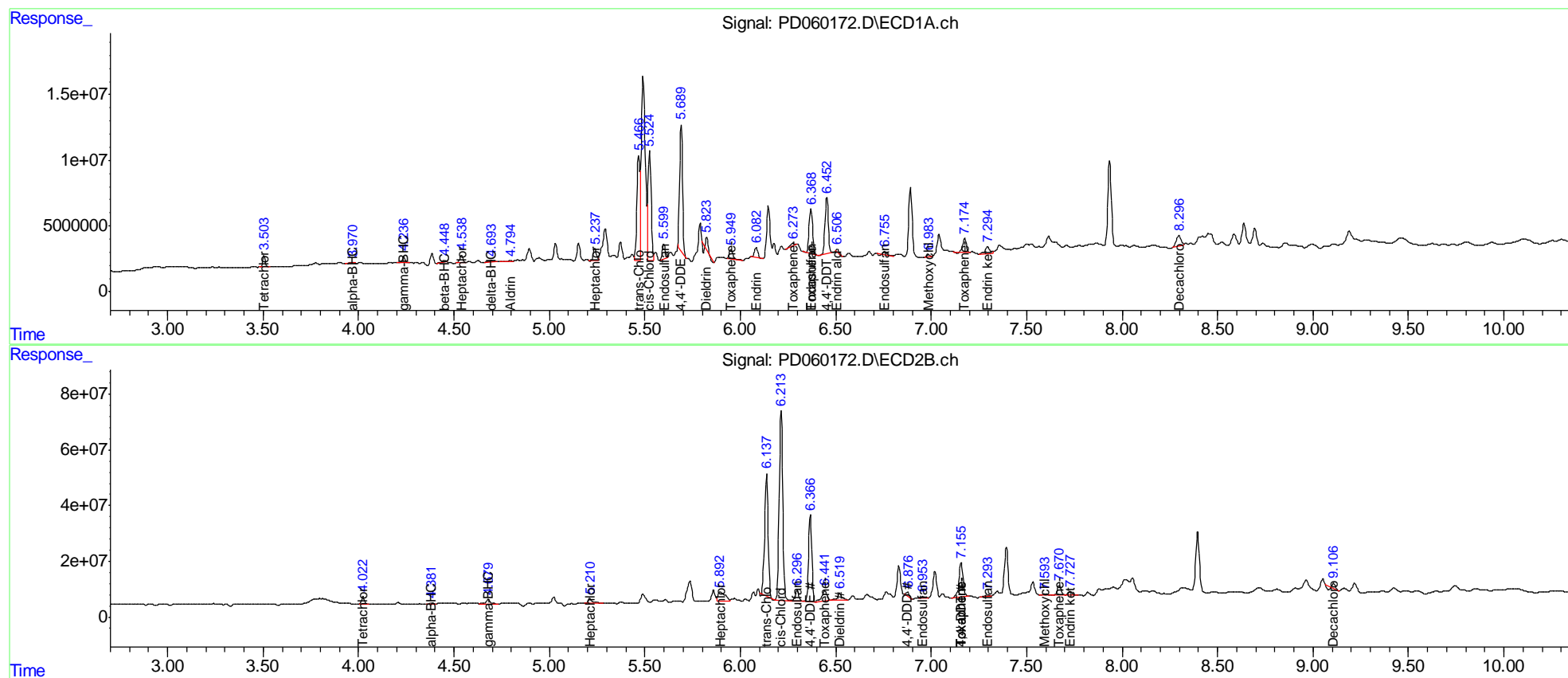
(f)=RT Delta > 1/2 Window (#)=Amounts differ by > 25% (m)=manual int.

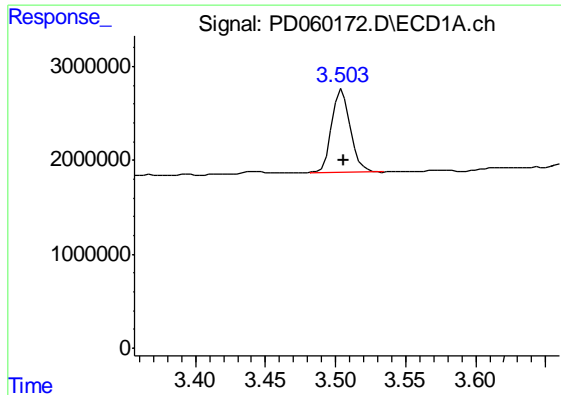
Data Path : Z:\pestpcbsrv\HPCHEM1\ECD_D\Data\PD112020\
 Data File : PD060172.D
 Signal(s) : Signal #1: ECD1A.ch Signal #2: ECD2B.ch
 Acq On : 20 Nov 2020 15:58
 Operator : DD\AJ
 Sample : L4711-08
 Misc :
 ALS Vial : 25 Sample Multiplier: 1

Instrument :
 ECD_D
 Client Sampled :
 C0B33

Integration File signal 1: autoint1.e
 Integration File signal 2: autoint2.e
 Quant Time: Nov 21 01:14:06 2020
 Quant Method : Z:\pestpcbsrv\HPCHEM1\ECD_D\Method\PD110320CLP.M
 Quant Title : GC Extractables
 QLast Update : Wed Nov 04 04:05:33 2020
 Response via : Initial Calibration
 Integrator: ChemStation

Volume Inj. : 1 µl
 Signal #1 Phase : ZB-MR2 Signal #2 Phase: ZB-MR1
 Signal #1 Info : 30M x 0.32mm x0.2 Signal #2 Info : 30M x 0.32mm x 0.50µm

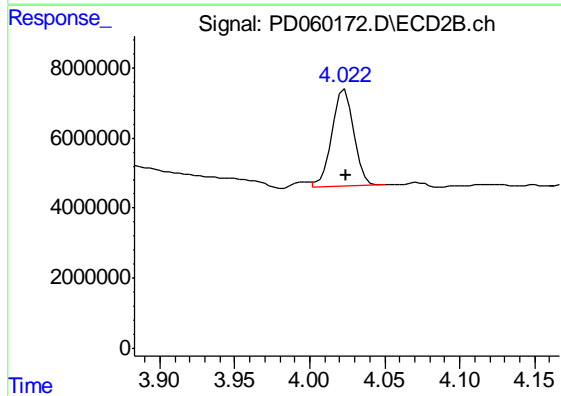




#1 Tetrachloro-m-xylene

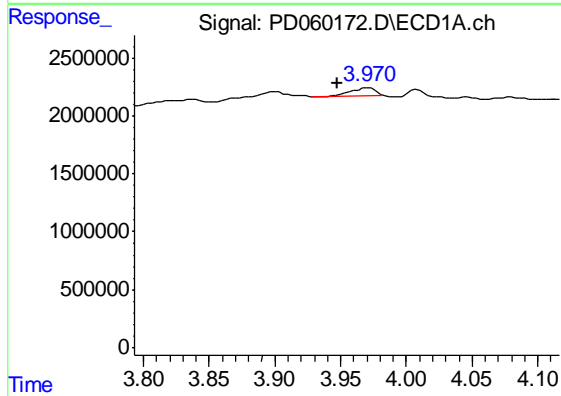
R.T.: 3.505 min
 Delta R.T.: -0.001 min
 Response: 8155023
 Conc: 9.52 ng/ml

Instrument :
 ECD_D
 ClientSampleId :
 C0B33



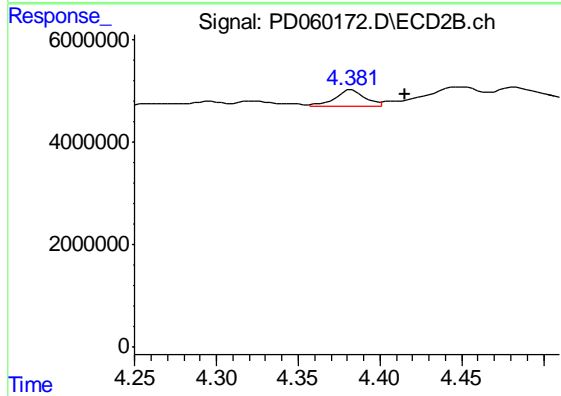
#1 Tetrachloro-m-xylene

R.T.: 4.024 min
 Delta R.T.: 0.000 min
 Response: 27804645
 Conc: 9.33 ng/ml



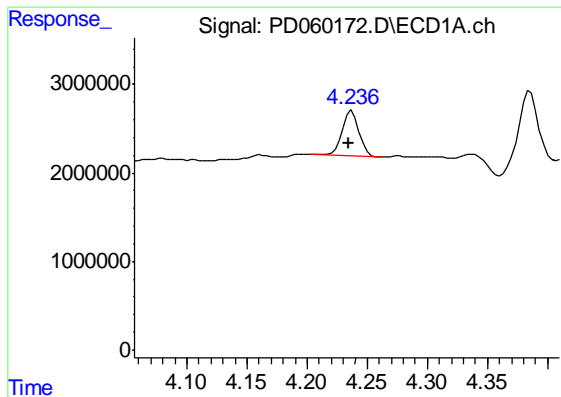
#2 alpha-BHC

R.T.: 3.971 min
 Delta R.T.: 0.024 min
 Response: 723103
 Conc: 0.56 ng/ml



#2 alpha-BHC

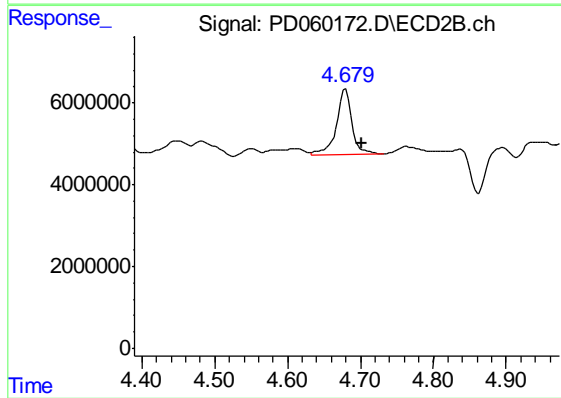
R.T.: 4.383 min
 Delta R.T.: -0.032 min
 Response: 4054987
 Conc: 0.91 ng/ml



#3 gamma-BHC (Lindane)

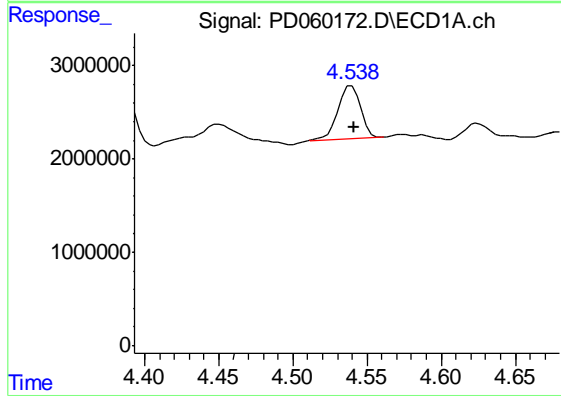
R.T.: 4.237 min
 Delta R.T.: 0.003 min
 Response: 4986482
 Conc: 4.08 ng/ml

Instrument :
 ECD_D
 ClientSampled :
 C0B33



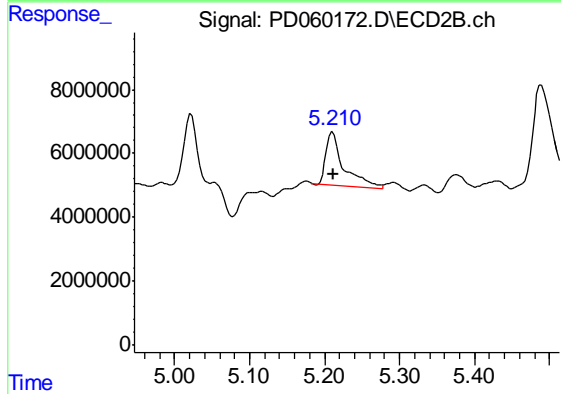
#3 gamma-BHC (Lindane)

R.T.: 4.680 min
 Delta R.T.: -0.021 min
 Response: 23557304
 Conc: 5.82 ng/ml



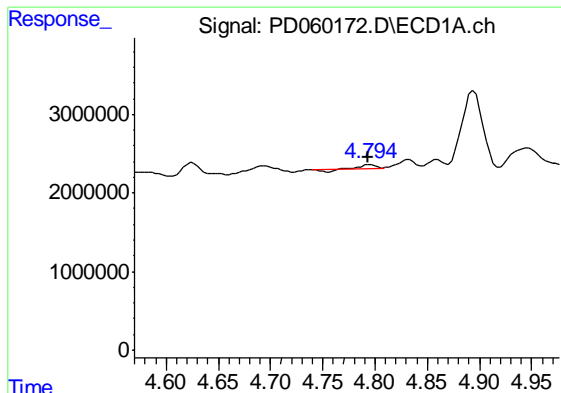
#4 Heptachlor

R.T.: 4.540 min
 Delta R.T.: -0.002 min
 Response: 6047682
 Conc: 5.15 ng/ml



#4 Heptachlor

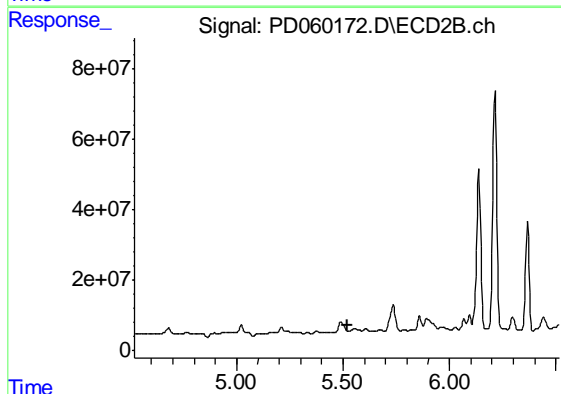
R.T.: 5.211 min
 Delta R.T.: -0.001 min
 Response: 26804979
 Conc: 6.76 ng/ml



#5 Aldrin

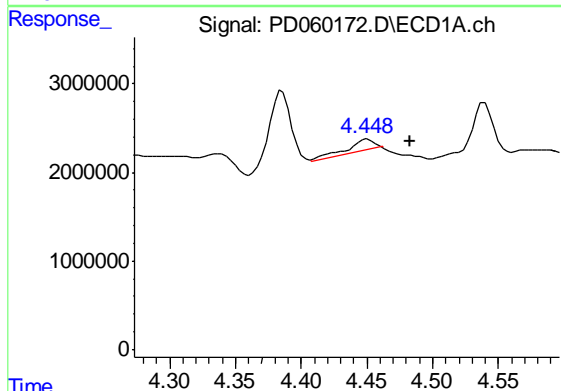
R.T.: 4.795 min
 Delta R.T.: 0.002 min
 Response: 177855
 Conc: 0.15 ng/ml

Instrument :
 ECD_D
 ClientSampleId :
 C0B33



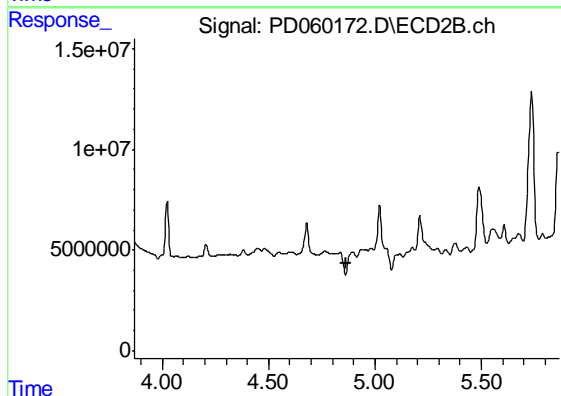
#5 Aldrin

R.T.: 0.000 min
 Exp R.T. : 5.519 min
 Response: 0
 Conc: N.D.



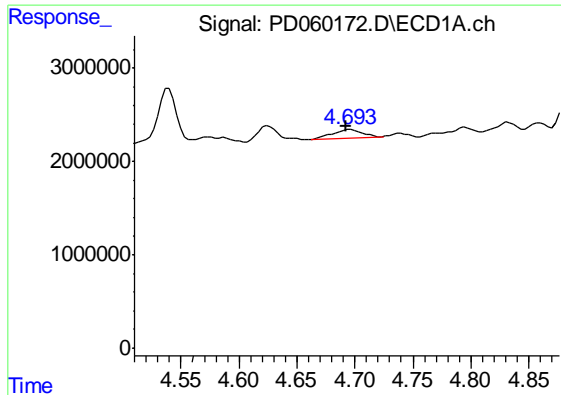
#6 beta-BHC

R.T.: 4.450 min
 Delta R.T.: -0.034 min
 Response: 1800090
 Conc: 3.40 ng/ml



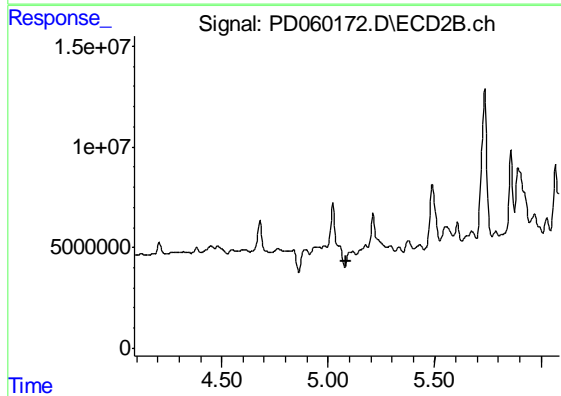
#6 beta-BHC

R.T.: 4.896 min
 Delta R.T.: 0.028 min
 Response: -3609989
 Conc: N.D.

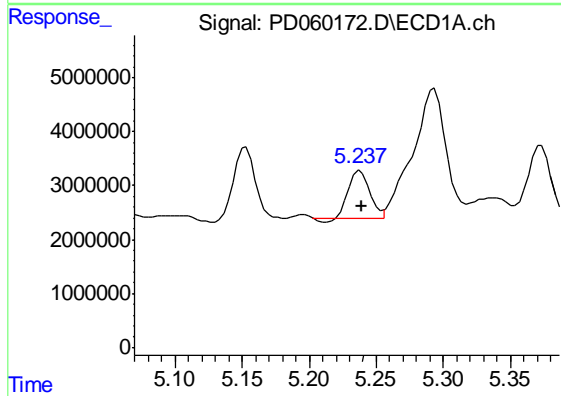


#7 delta-BHC
 R.T.: 4.695 min
 Delta R.T.: 0.003 min
 Response: 1621159
 Conc: 1.29 ng/ml

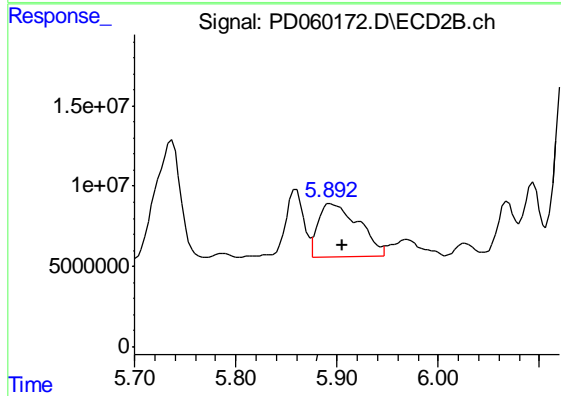
Instrument :
 ECD_D
 ClientSampled :
 C0B33



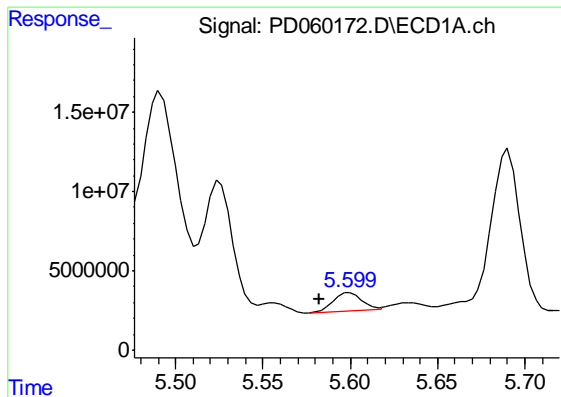
#7 delta-BHC
 R.T.: 0.000 min
 Exp R.T. : 5.087 min
 Response: 0
 Conc: N.D.



#8 Heptachlor epoxide
 R.T.: 5.238 min
 Delta R.T.: -0.001 min
 Response: 9332384
 Conc: 8.83 ng/ml



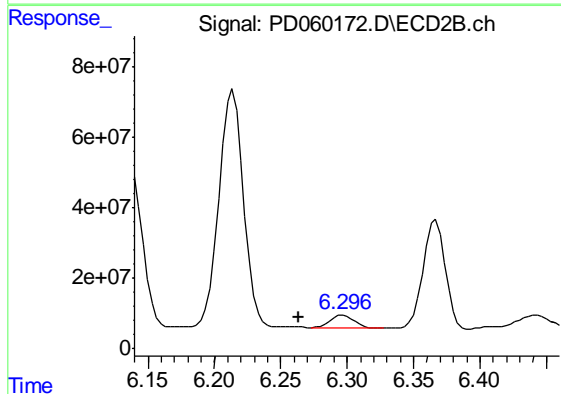
#8 Heptachlor epoxide
 R.T.: 5.894 min
 Delta R.T.: -0.011 min
 Response: 92781094
 Conc: 28.17 ng/ml



#9 Endosulfan I

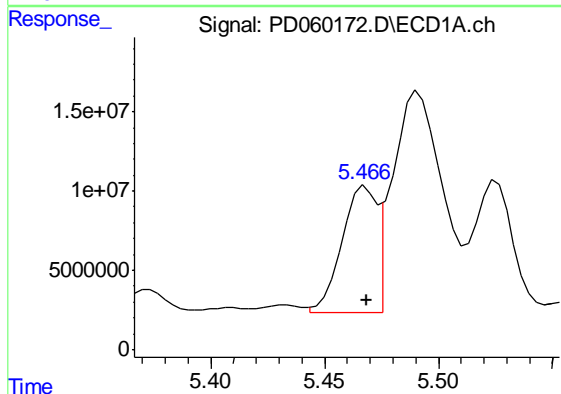
R.T.: 5.600 min
 Delta R.T.: 0.018 min
 Response: 13018190
 Conc: 12.80 ng/ml

Instrument :
 ECD_D
 ClientSampleId :
 C0B33



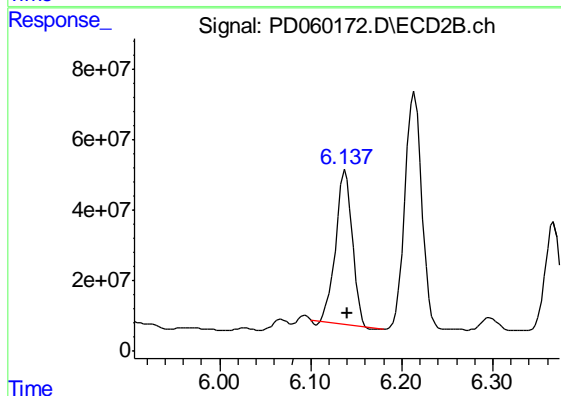
#9 Endosulfan I

R.T.: 6.298 min
 Delta R.T.: 0.034 min
 Response: 49489793
 Conc: 15.44 ng/ml



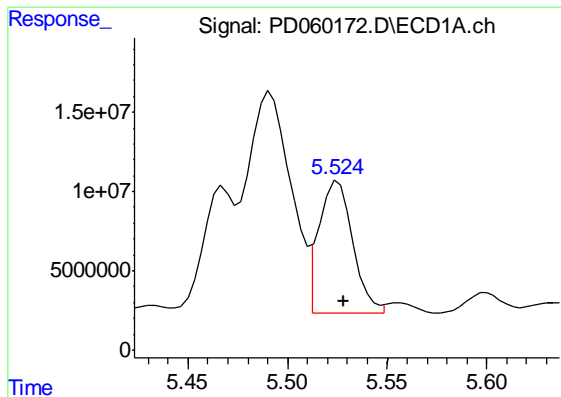
#10 trans-Chlordane

R.T.: 5.468 min
 Delta R.T.: 0.000 min
 Response: 82258659
 Conc: 77.45 ng/ml



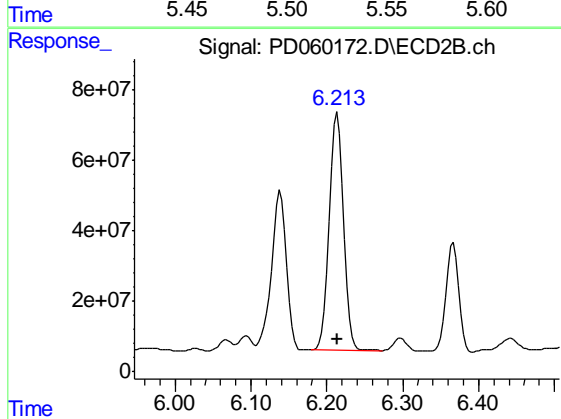
#10 trans-Chlordane

R.T.: 6.138 min
 Delta R.T.: -0.002 min
 Response: 558614612
 Conc: 162.59 ng/ml

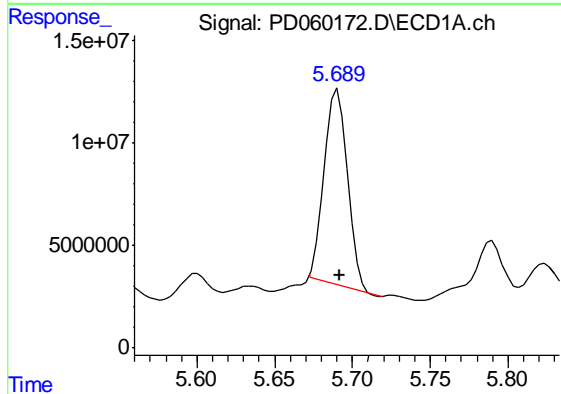


#11 cis-Chlordane
 R.T.: 5.525 min
 Delta R.T.: -0.002 min
 Response: 99167194
 Conc: 93.74 ng/ml

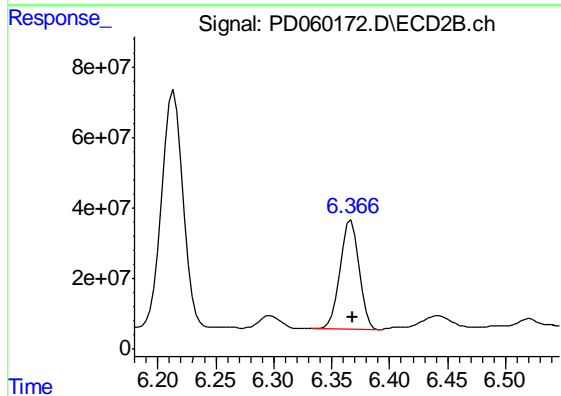
Instrument :
 ECD_D
 ClientSampleId :
 C0B33



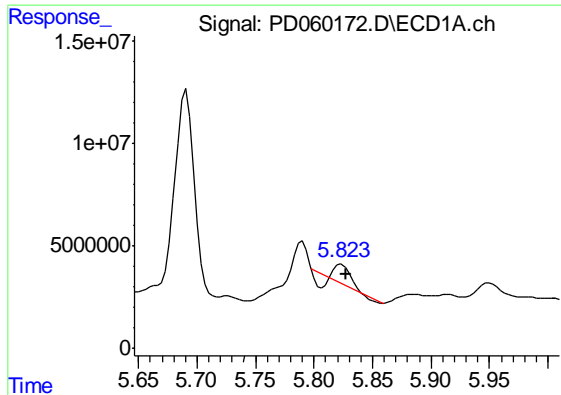
#11 cis-Chlordane
 R.T.: 6.214 min
 Delta R.T.: 0.001 min
 Response: 879469802
 Conc: 256.15 ng/ml



#12 4,4'-DDE
 R.T.: 5.690 min
 Delta R.T.: -0.002 min
 Response: 101724006
 Conc: 99.53 ng/ml

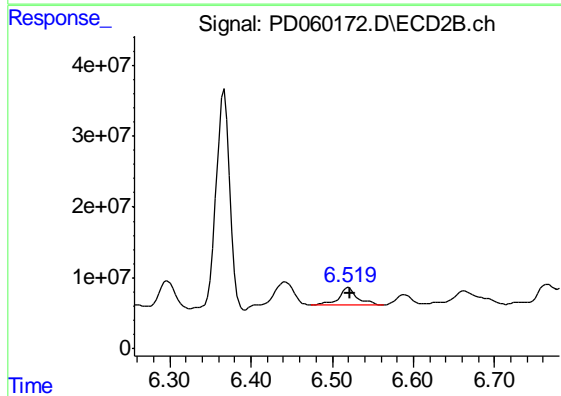


#12 4,4'-DDE
 R.T.: 6.367 min
 Delta R.T.: -0.001 min
 Response: 359219803
 Conc: 111.09 ng/ml

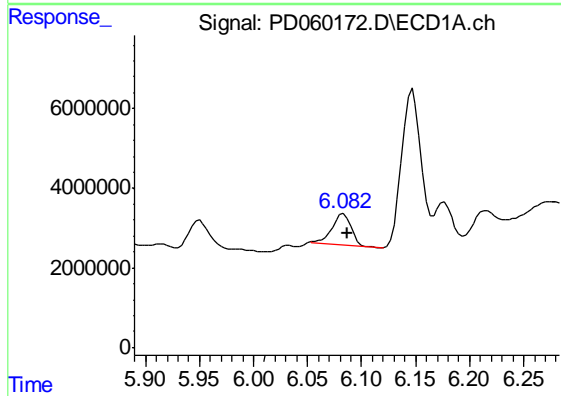


#13 Dieldrin
 R.T.: 5.824 min
 Delta R.T.: -0.004 min
 Response: 5783364
 Conc: 5.31 ng/ml

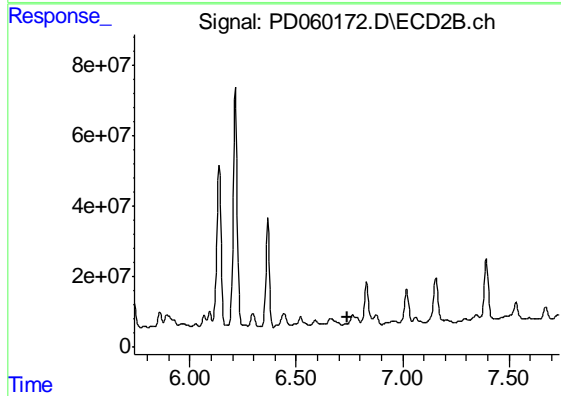
Instrument :
 ECD_D
 ClientSampled :
 C0B33



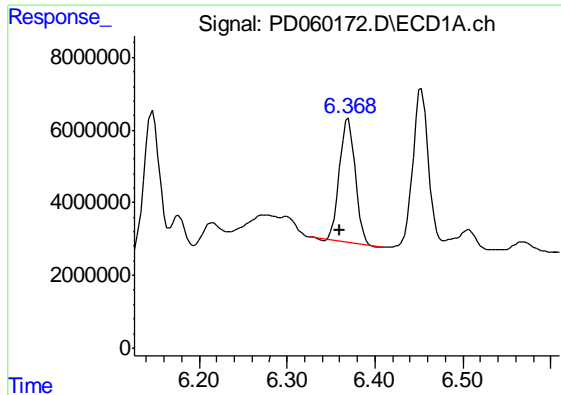
#13 Dieldrin
 R.T.: 6.520 min
 Delta R.T.: -0.001 min
 Response: 38553626
 Conc: 11.04 ng/ml



#14 Endrin
 R.T.: 6.083 min
 Delta R.T.: -0.004 min
 Response: 9916054
 Conc: 10.99 ng/ml



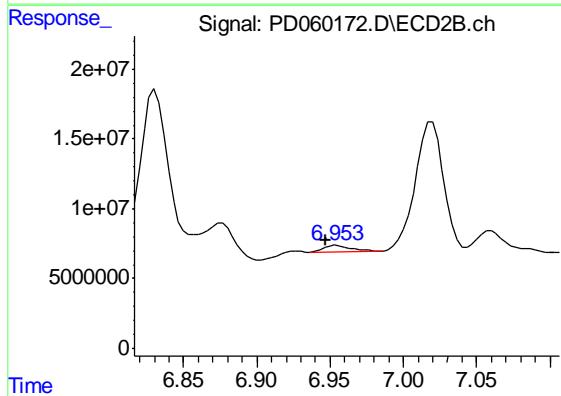
#14 Endrin
 R.T.: 6.731 min
 Delta R.T.: -0.009 min
 Response: -3480011
 Conc: N.D.



#15 Endosulfan II

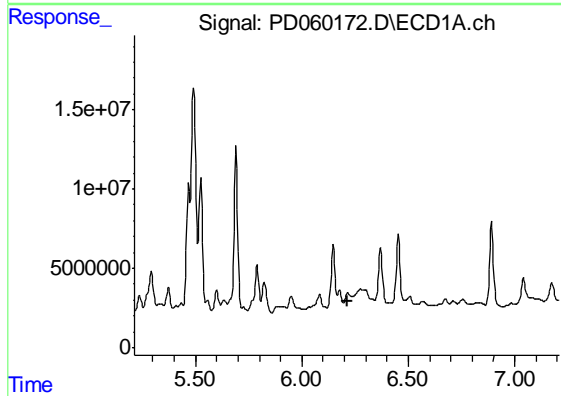
R.T.: 6.370 min
 Delta R.T.: 0.010 min
 Response: 42349980
 Conc: 46.96 ng/ml

Instrument :
 ECD_D
 ClientSampled :
 C0B33



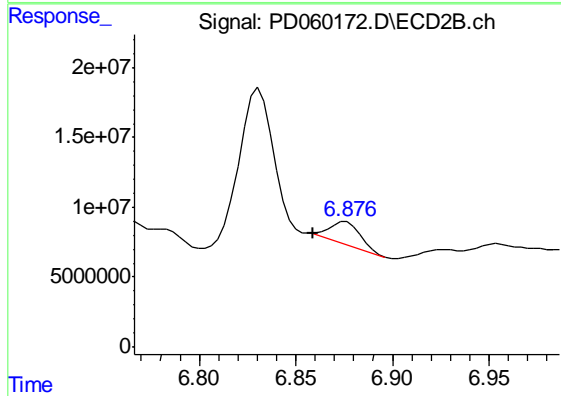
#15 Endosulfan II

R.T.: 6.955 min
 Delta R.T.: 0.007 min
 Response: 6450709
 Conc: 2.28 ng/ml



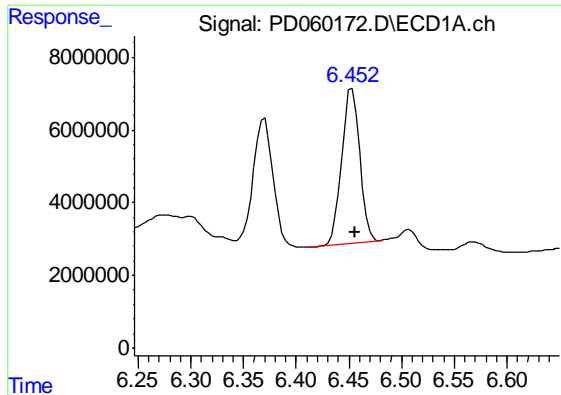
#16 4,4'-DDD

R.T.: 6.216 min
 Delta R.T.: 0.004 min
 Response: -1560856
 Conc: N.D.



#16 4,4'-DDD

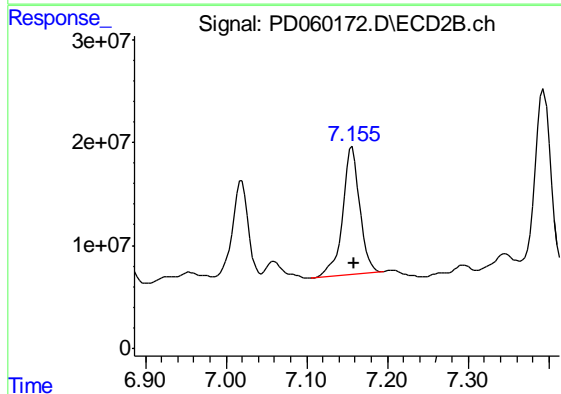
R.T.: 6.876 min
 Delta R.T.: 0.017 min
 Response: 16566223
 Conc: 6.18 ng/ml



#17 4,4'-DDT

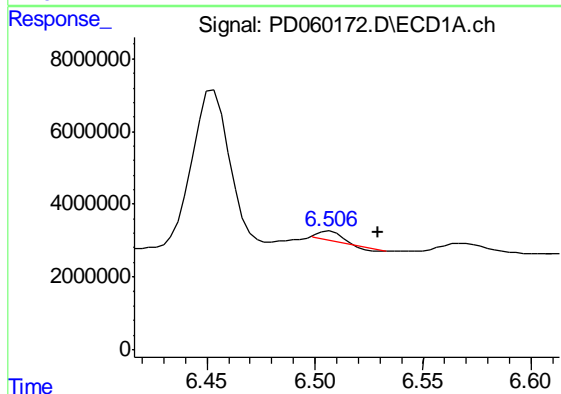
R.T.: 6.453 min
 Delta R.T.: -0.002 min
 Response: 50446683
 Conc: 56.13 ng/ml

Instrument :
 ECD_D
 ClientSampleId :
 C0B33



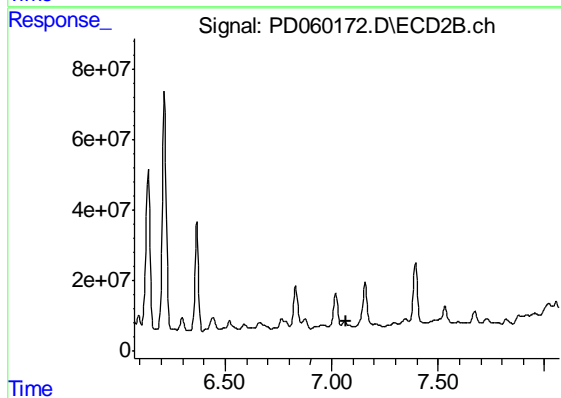
#17 4,4'-DDT

R.T.: 7.157 min
 Delta R.T.: -0.002 min
 Response: 182600548
 Conc: 67.10 ng/ml



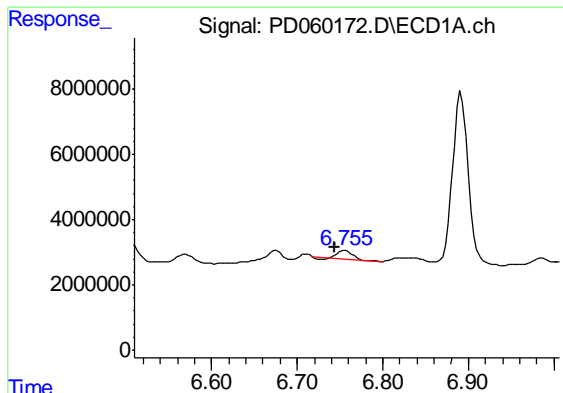
#18 Endrin aldehyde

R.T.: 6.507 min
 Delta R.T.: -0.023 min
 Response: 1619125
 Conc: 2.17 ng/ml



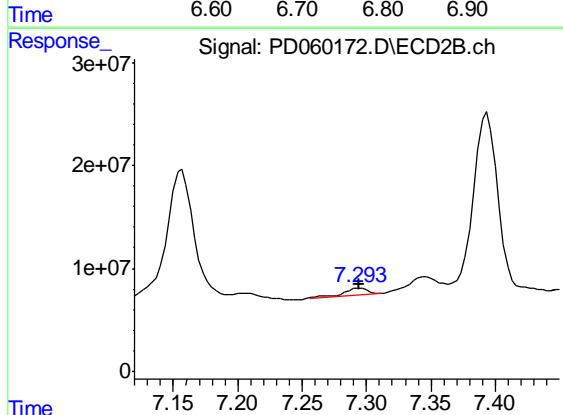
#18 Endrin aldehyde

R.T.: 7.060 min
 Delta R.T.: -0.011 min
 Response: -3444792
 Conc: N.D.

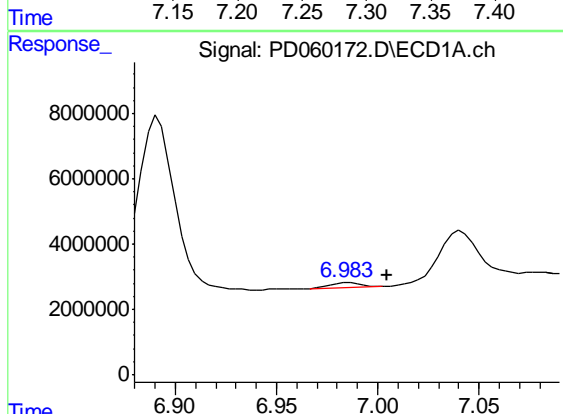


#19 Endosulfan Sulfate
 R.T.: 6.756 min
 Delta R.T.: 0.012 min
 Response: 2558032
 Conc: 2.93 ng/ml

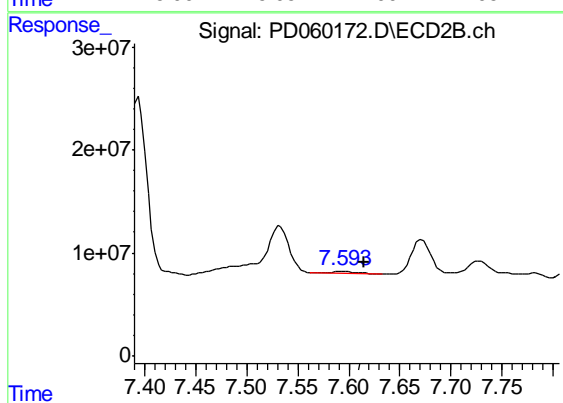
Instrument :
 ECD_D
 ClientSampleId :
 C0B33



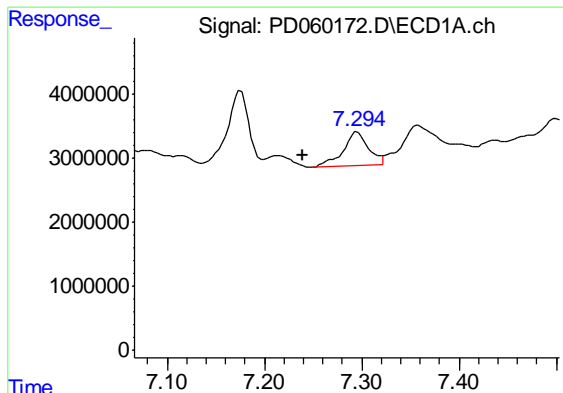
#19 Endosulfan Sulfate
 R.T.: 7.295 min
 Delta R.T.: 0.000 min
 Response: 7854648
 Conc: 2.72 ng/ml



#20 Methoxychlor
 R.T.: 6.986 min
 Delta R.T.: -0.019 min
 Response: 1470903
 Conc: 3.46 ng/ml



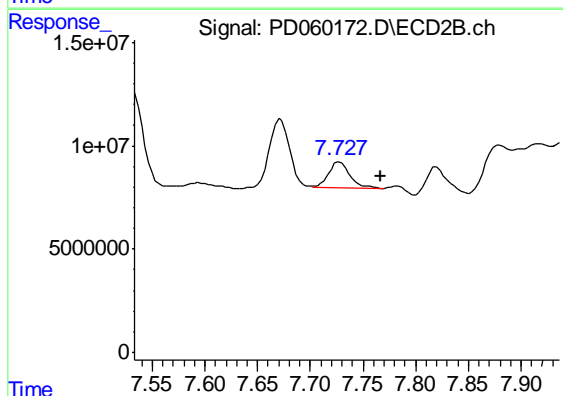
#20 Methoxychlor
 R.T.: 7.594 min
 Delta R.T.: -0.022 min
 Response: 3153795
 Conc: 2.24 ng/ml



#21 Endrin ketone

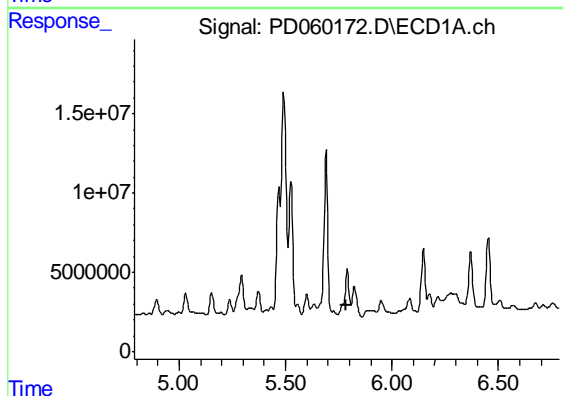
R.T.: 7.296 min
 Delta R.T.: 0.057 min
 Response: 9779430
 Conc: 9.83 ng/ml

Instrument :
 ECD_D
 ClientSampled :
 C0B33



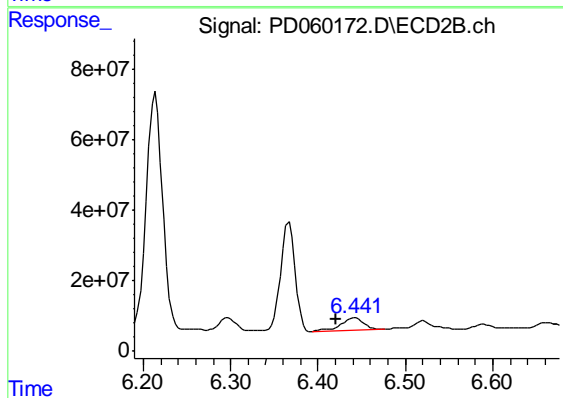
#21 Endrin ketone

R.T.: 7.728 min
 Delta R.T.: -0.039 min
 Response: 16629710
 Conc: 5.70 ng/ml



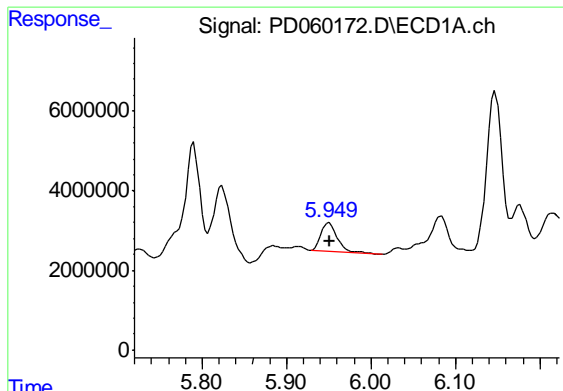
#22 Toxaphene-1

R.T.: 5.790 min
 Delta R.T.: 0.003 min
 Response: -3578175
 Conc: N.D.



#22 Toxaphene-1

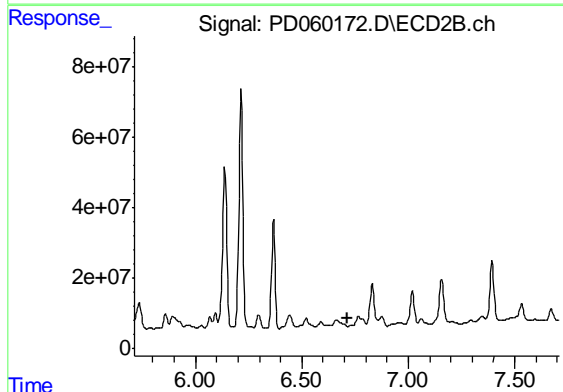
R.T.: 6.442 min
 Delta R.T.: 0.022 min
 Response: 65337851
 Conc: 4271.09 ng/ml



#23 Toxaphene-2

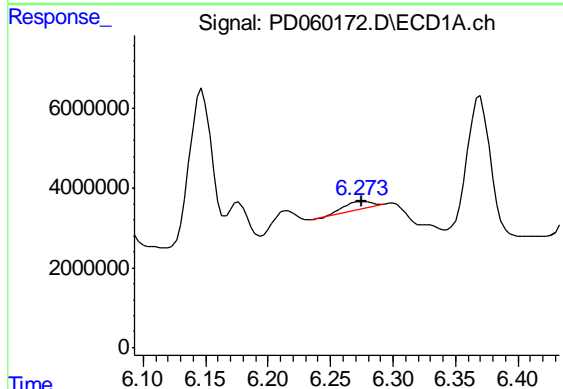
R.T.: 5.950 min
 Delta R.T.: 0.000 min
 Response: 9921000
 Conc: 1571.57 ng/ml

Instrument :
 ECD_D
 ClientSampled :
 C0B33



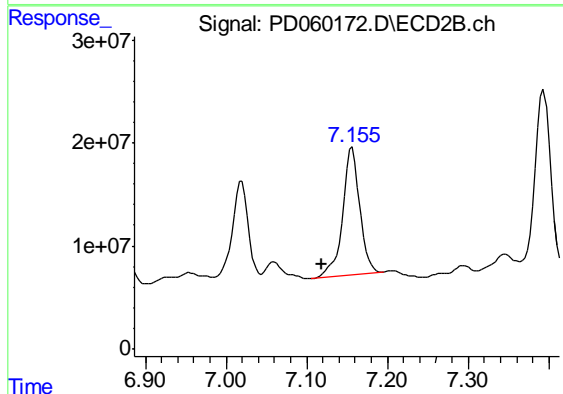
#23 Toxaphene-2

R.T.: 6.731 min
 Delta R.T.: 0.019 min
 Response: -3480011
 Conc: N.D.



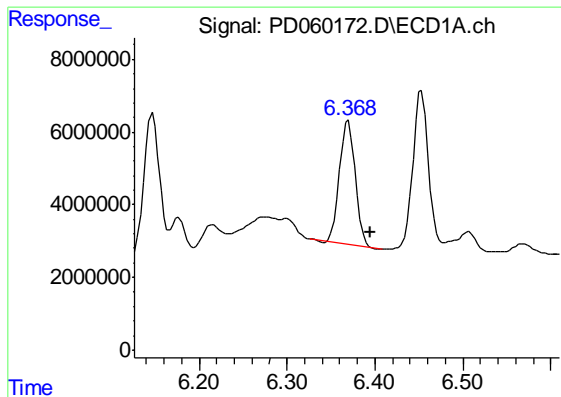
#24 Toxaphene-3

R.T.: 6.276 min
 Delta R.T.: 0.001 min
 Response: 2897656
 Conc: 410.43 ng/ml



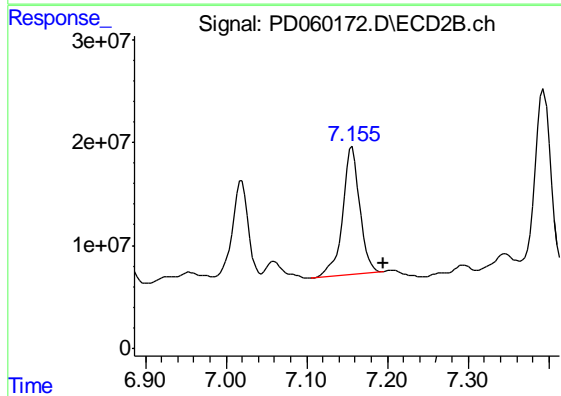
#24 Toxaphene-3

R.T.: 7.157 min
 Delta R.T.: 0.037 min
 Response: 182600548
 Conc: 6584.17 ng/ml

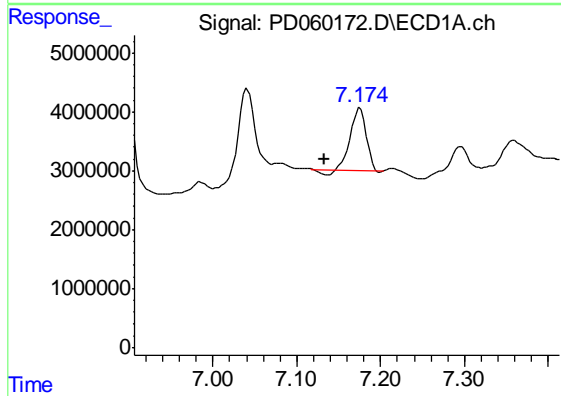


#25 Toxaphene-4
 R.T.: 6.370 min
 Delta R.T.: -0.025 min
 Response: 42349980
 Conc: 2641.35 ng/ml

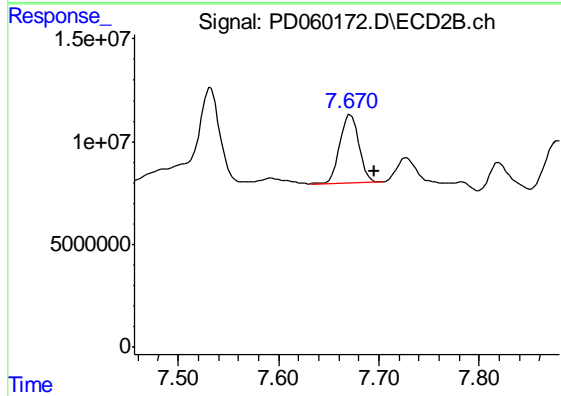
Instrument :
 ECD_D
 ClientSampled :
 C0B33



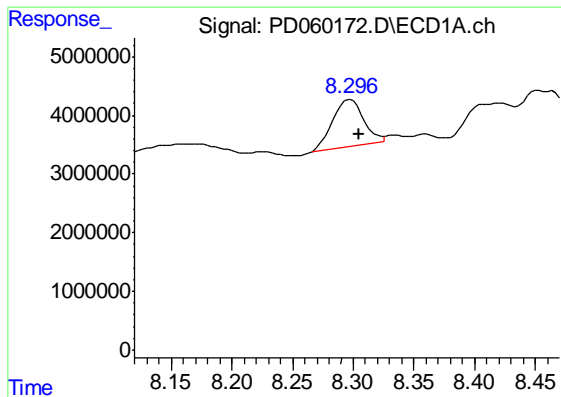
#25 Toxaphene-4
 R.T.: 7.157 min
 Delta R.T.: -0.038 min
 Response: 182600548
 Conc: 2407.76 ng/ml



#26 Toxaphene-5
 R.T.: 7.175 min
 Delta R.T.: 0.043 min
 Response: 13237279
 Conc: 782.66 ng/ml



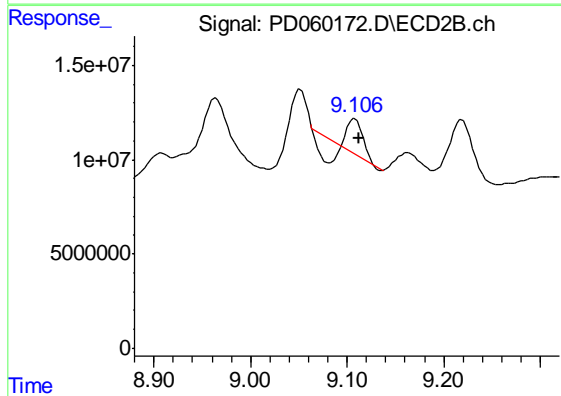
#26 Toxaphene-5
 R.T.: 7.672 min
 Delta R.T.: -0.024 min
 Response: 43576584
 Conc: 1281.66 ng/ml



#27 Decachlorobiphenyl

R.T.: 8.298 min
Delta R.T.: -0.007 min
Response: 14133254
Conc: 17.01 ng/ml

Instrument :
ECD_D
ClientSampleId :
C0B33



#27 Decachlorobiphenyl

R.T.: 9.108 min
Delta R.T.: -0.005 min
Response: 12377163
Conc: 5.03 ng/ml