

Data Path : Z:\pestpcbsrv\HPCHEM1\ECD_D\Data\PD112020\
 Data File : PD060153.D
 Signal(s) : Signal #1: ECD1A.ch Signal #2: ECD2B.ch
 Acq On : 20 Nov 2020 11:31
 Operator : DD\AJ
 Sample : L4711-04
 Misc :
 ALS Vial : 6 Sample Multiplier: 1

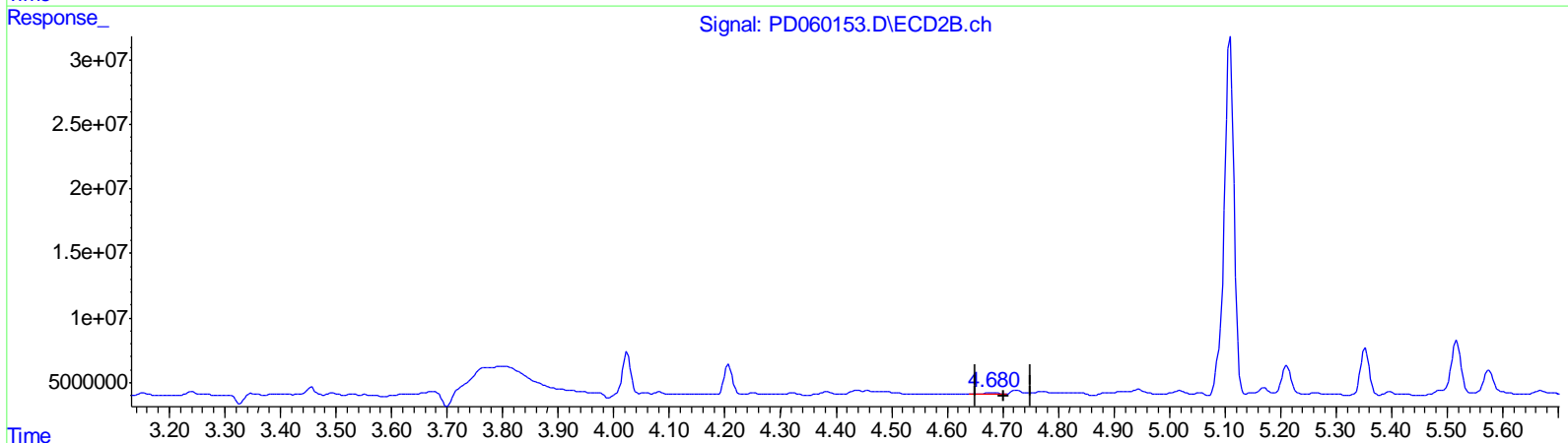
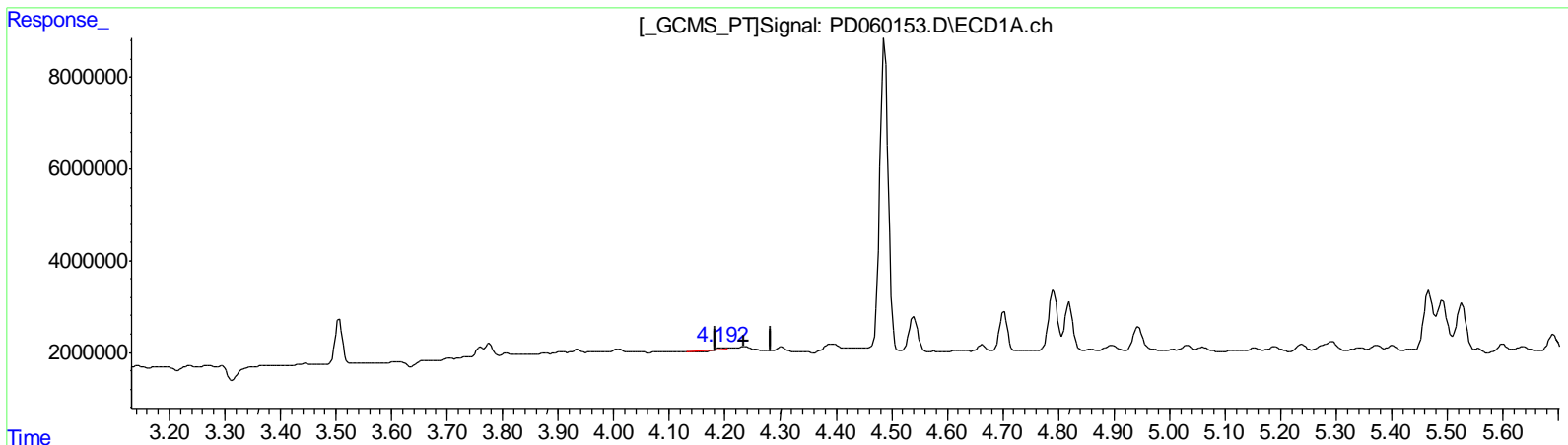
Instrument :
 ECD_D
 ClientSampled :
 C0AZ8

Manual Integrations
 APPROVED

mohammad
 11/23/2020 12:03:03 PM

Integration File signal 1: autoint1.e
 Integration File signal 2: autoint2.e
 Quant Time: Nov 21 06:28:11 2020
 Quant Method : Z:\pestpcbsrv\HPCHEM1\ECD_D\Method\PD110320CLP.M
 Quant Title : GC Extractables
 QLast Update : Wed Nov 04 04:05:33 2020
 Response via : Initial Calibration
 Integrator: ChemStation

Volume Inj. : 1 µl
 Signal #1 Phase : ZB-MR2 Signal #2 Phase: ZB-MR1
 Signal #1 Info : 30M x 0.32mm x0.2 Signal #2 Info : 30M x 0.32mm x 0.50µm



QEdit

(3) gamma-BHC (Lindane) (MA)

4.196min 0.332 ng/ml

response 405561

(3) gamma-BHC (Lindane) #2 (MA)

4.682min 0.577 ng/ml

response 2334961

(+) = Expected Retention Time

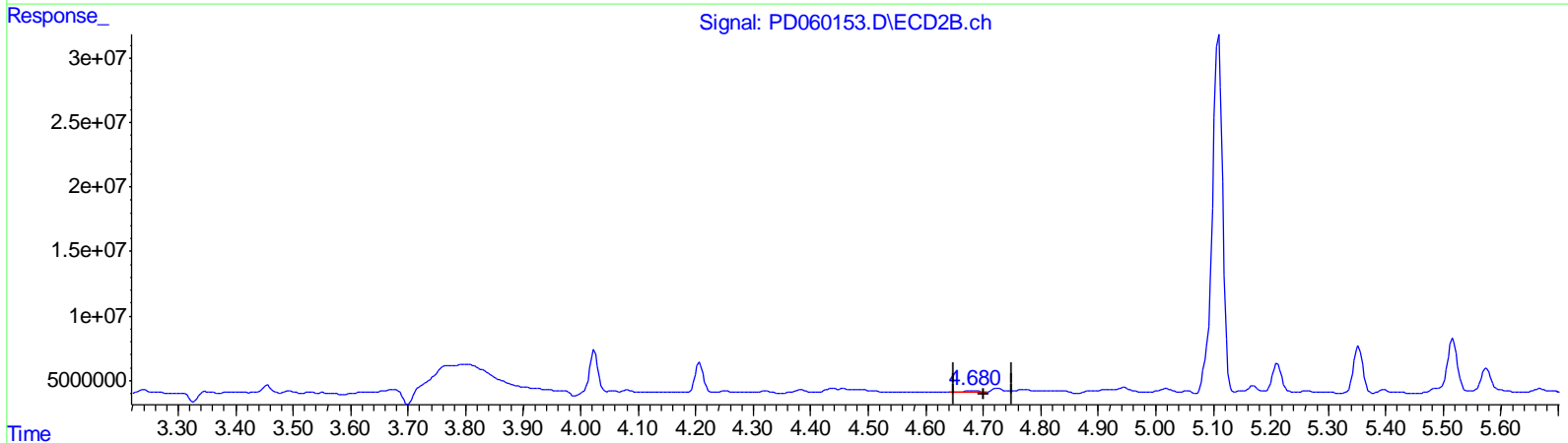
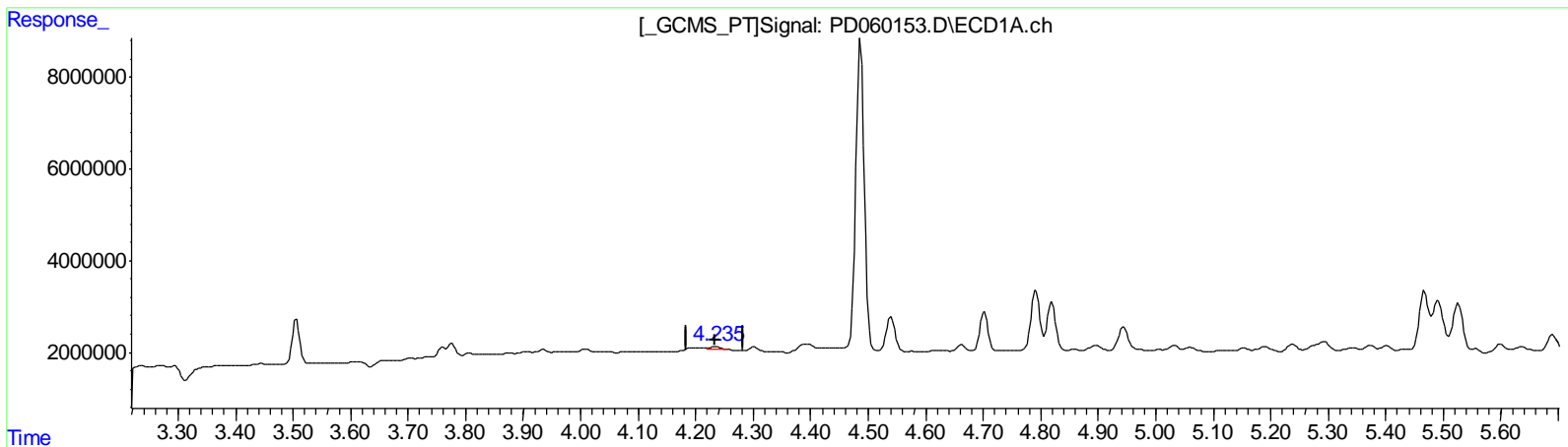
Data Path : Z:\pestpcbsrv\HPCHEM1\ECD_D\Data\PD112020\
 Data File : PD060153.D
 Signal(s) : Signal #1: ECD1A.ch Signal #2: ECD2B.ch
 Acq On : 20 Nov 2020 11:31
 Operator : DD\AJ
 Sample : L4711-04
 Misc :
 ALS Vial : 6 Sample Multiplier: 1

Instrument :
 ECD_D
ClientSampled :
 C0AZ8

Manual Integrations
APPROVED
 mohammad
 11/23/2020 12:03:03 PM

Integration File signal 1: autoint1.e
 Integration File signal 2: autoint2.e
 Quant Time: Nov 21 06:28:11 2020
 Quant Method : Z:\pestpcbsrv\HPCHEM1\ECD_D\Method\PD110320CLP.M
 Quant Title : GC Extractables
 QLast Update : Wed Nov 04 04:05:33 2020
 Response via : Initial Calibration
 Integrator: ChemStation

Volume Inj. : 1 µl
 Signal #1 Phase : ZB-MR2 Signal #2 Phase: ZB-MR1
 Signal #1 Info : 30M x 0.32mm x0.2 Signal #2 Info : 30M x 0.32mm x 0.50µm



QEdit

(3) gamma-BHC (Lindane) (MA)

4.235min 0.653 ng/ml m

response 798434

(3) gamma-BHC (Lindane) #2 (MA)

4.682min 0.577 ng/ml

response 2334961

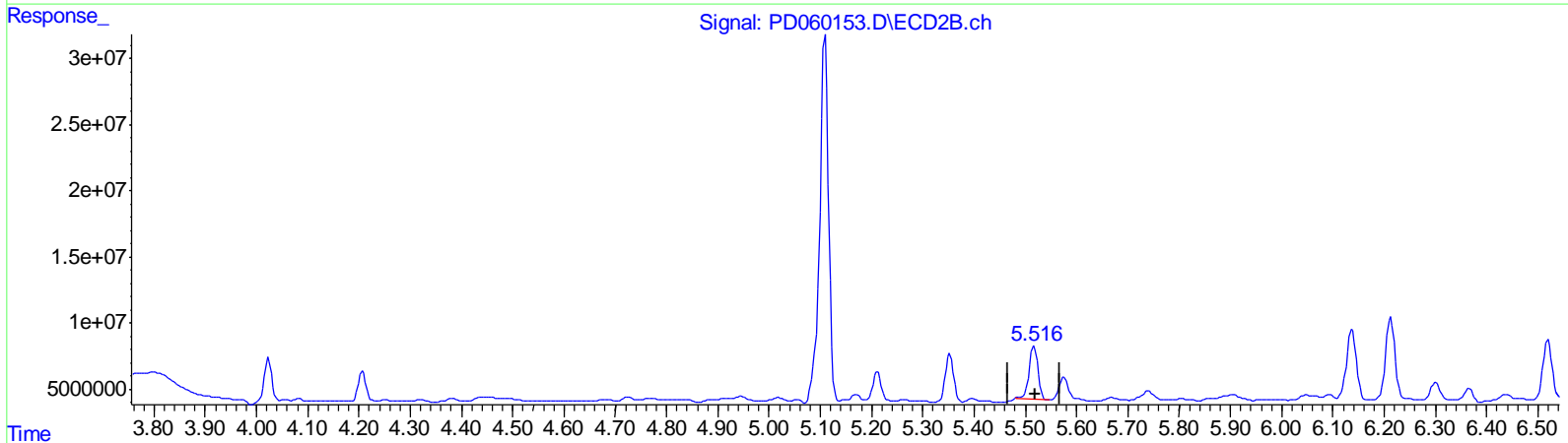
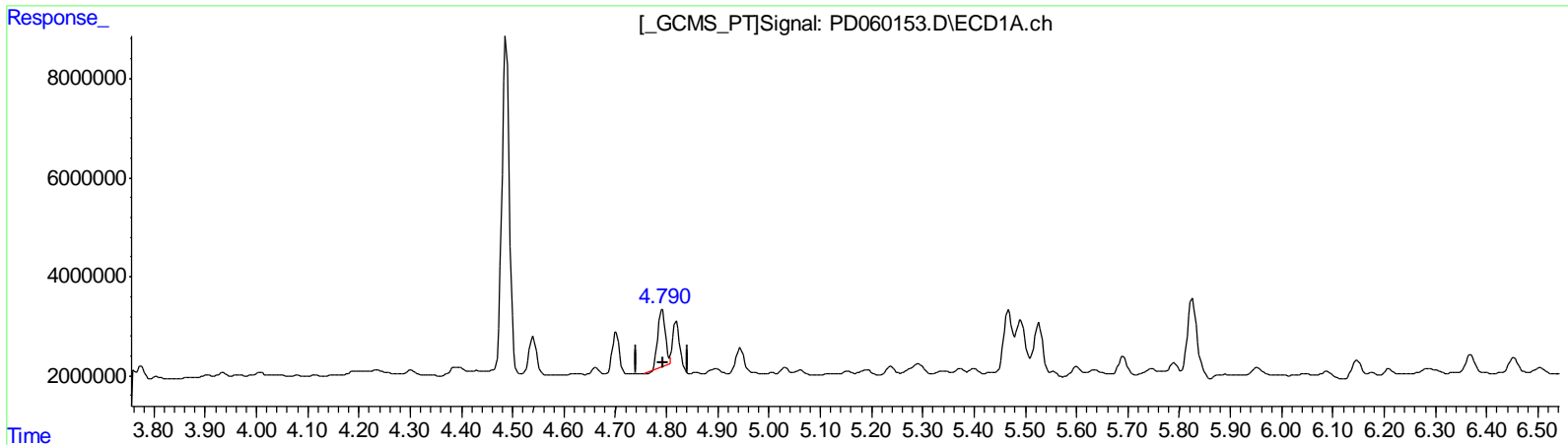
Data Path : Z:\pestpcbsrv\HPCHEM1\ECD_D\Data\PD112020\
 Data File : PD060153.D
 Signal(s) : Signal #1: ECD1A.ch Signal #2: ECD2B.ch
 Acq On : 20 Nov 2020 11:31
 Operator : DD\AJ
 Sample : L4711-04
 Misc :
 ALS Vial : 6 Sample Multiplier: 1

Instrument :
 ECD_D
ClientSampled :
 C0AZ8

Manual Integrations
APPROVED
 mohammad
 11/23/2020 12:03:03 PM

Integration File signal 1: autoint1.e
 Integration File signal 2: autoint2.e
 Quant Time: Nov 21 06:28:11 2020
 Quant Method : Z:\pestpcbsrv\HPCHEM1\ECD_D\Method\PD110320CLP.M
 Quant Title : GC Extractables
 QLast Update : Wed Nov 04 04:05:33 2020
 Response via : Initial Calibration
 Integrator: ChemStation

Volume Inj. : 1 µl
 Signal #1 Phase : ZB-MR2 Signal #2 Phase: ZB-MR1
 Signal #1 Info : 30M x 0.32mm x0.2 Signal #2 Info : 30M x 0.32mm x 0.50µm



QEdit

(5) Aldrin (MB)
 4.792min 9.706 ng/ml
 response 11143417

(5) Aldrin #2 (MB)
 5.517min 12.544 ng/ml
 response 46540510

(+) = Expected Retention Time

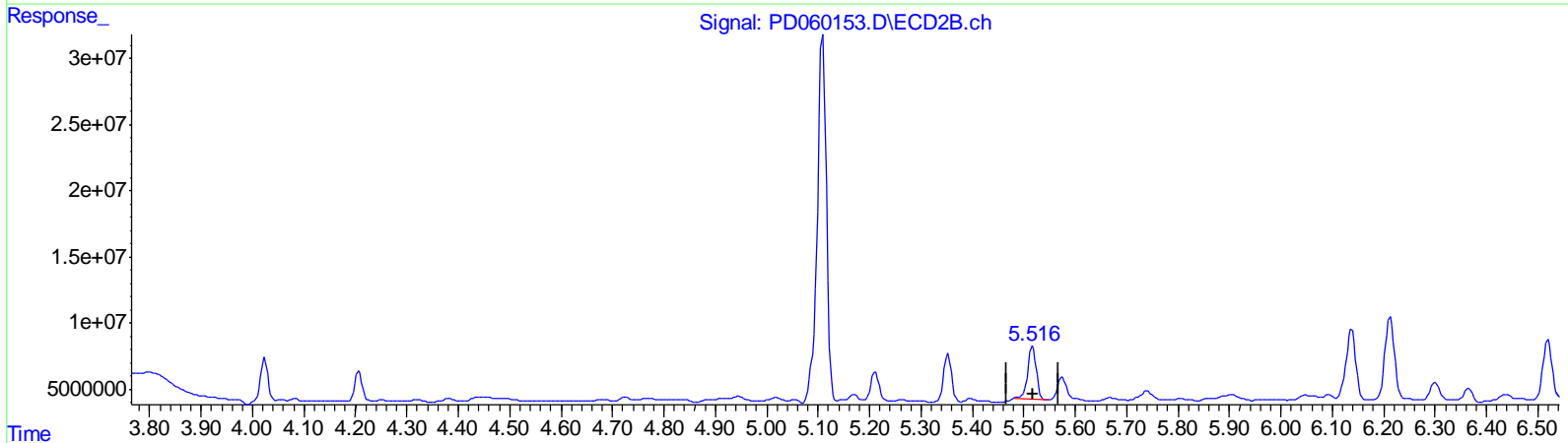
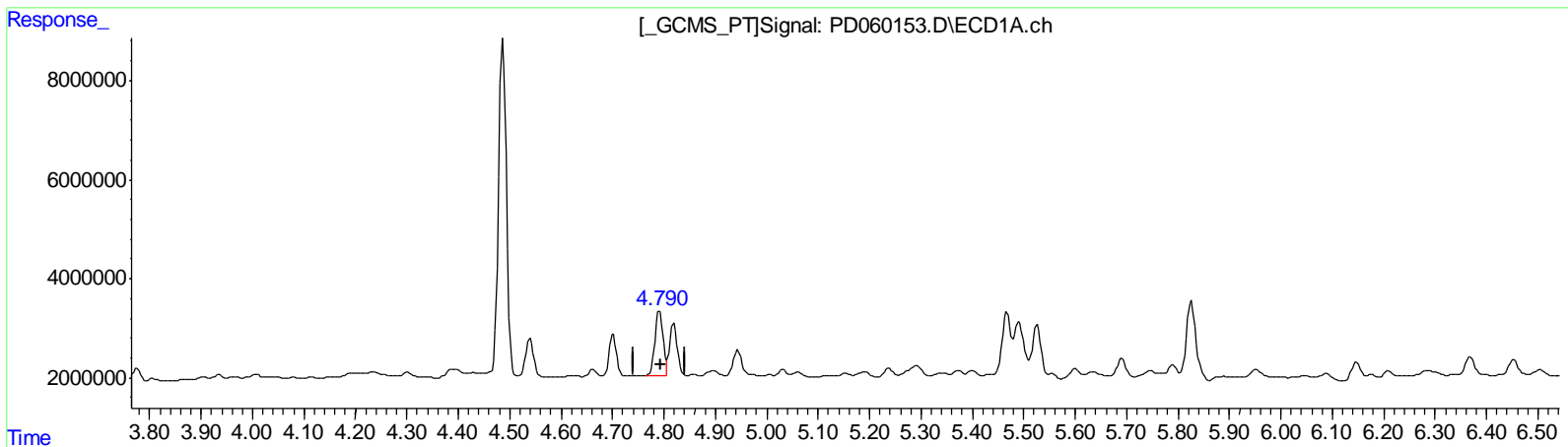
Data Path : Z:\pestpcbsrv\HPCHEM1\ECD_D\Data\PD112020\
 Data File : PD060153.D
 Signal(s) : Signal #1: ECD1A.ch Signal #2: ECD2B.ch
 Acq On : 20 Nov 2020 11:31
 Operator : DD\AJ
 Sample : L4711-04
 Misc :
 ALS Vial : 6 Sample Multiplier: 1

Instrument :
 ECD_D
ClientSampled :
 C0AZ8

Manual Integrations
APPROVED
 mohammad
 11/23/2020 12:03:03 PM

Integration File signal 1: autoint1.e
 Integration File signal 2: autoint2.e
 Quant Time: Nov 21 06:28:11 2020
 Quant Method : Z:\pestpcbsrv\HPCHEM1\ECD_D\Method\PD110320CLP.M
 Quant Title : GC Extractables
 QLast Update : Wed Nov 04 04:05:33 2020
 Response via : Initial Calibration
 Integrator: ChemStation

Volume Inj. : 1 µl
 Signal #1 Phase : ZB-MR2 Signal #2 Phase: ZB-MR1
 Signal #1 Info : 30M x 0.32mm x0.2 Signal #2 Info : 30M x 0.32mm x 0.50µm



QEdit

(5) Aldrin (MB)
 4.790min 12.982 ng/ml m
 response 14903901

(5) Aldrin #2 (MB)
 5.517min 12.544 ng/ml
 response 46540510

(+) = Expected Retention Time

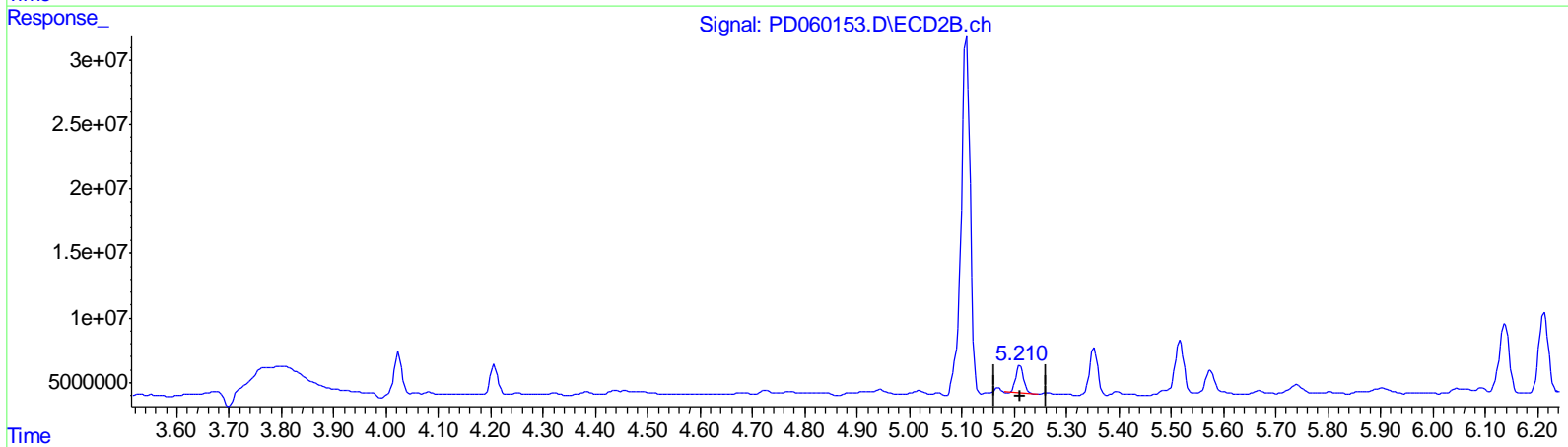
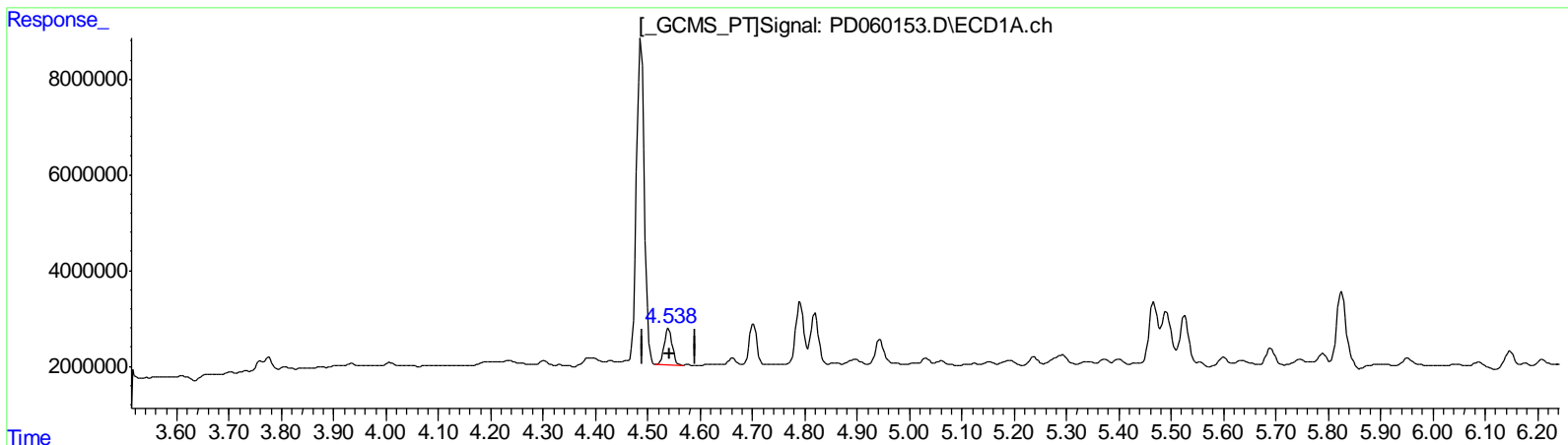
Data Path : Z:\pestpcbsrv\HPCHEM1\ECD_D\Data\PD112020\
 Data File : PD060153.D
 Signal(s) : Signal #1: ECD1A.ch Signal #2: ECD2B.ch
 Acq On : 20 Nov 2020 11:31
 Operator : DD\AJ
 Sample : L4711-04
 Misc :
 ALS Vial : 6 Sample Multiplier: 1

Instrument :
 ECD_D
ClientSampled :
 C0AZ8

Manual Integrations
APPROVED
 mohammad
 11/23/2020 12:03:03 PM

Integration File signal 1: autoint1.e
 Integration File signal 2: autoint2.e
 Quant Time: Nov 21 06:28:11 2020
 Quant Method : Z:\pestpcbsrv\HPCHEM1\ECD_D\Method\PD110320CLP.M
 Quant Title : GC Extractables
 QLast Update : Wed Nov 04 04:05:33 2020
 Response via : Initial Calibration
 Integrator: ChemStation

Volume Inj. : 1 µl
 Signal #1 Phase : ZB-MR2 Signal #2 Phase: ZB-MR1
 Signal #1 Info : 30M x 0.32mm x0.2 Signal #2 Info : 30M x 0.32mm x 0.50µm



QEdit

(4) Heptachlor (MA)
 4.540min 6.625 ng/ml
 response 7775562

(4) Heptachlor #2 (MA)
 5.211min 5.561 ng/ml
 response 22049279

(+) = Expected Retention Time

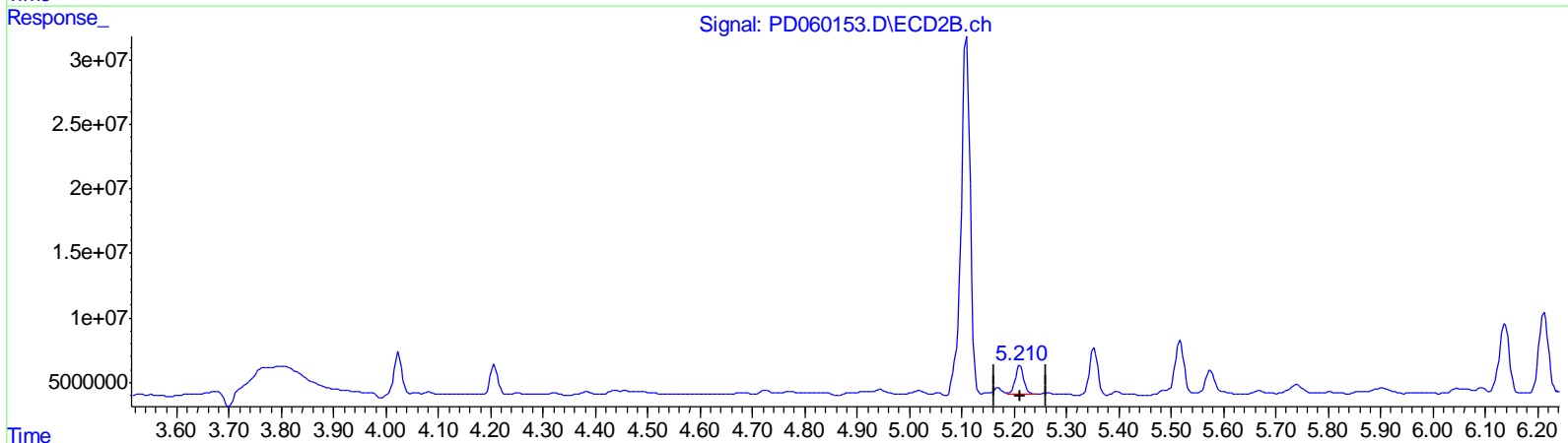
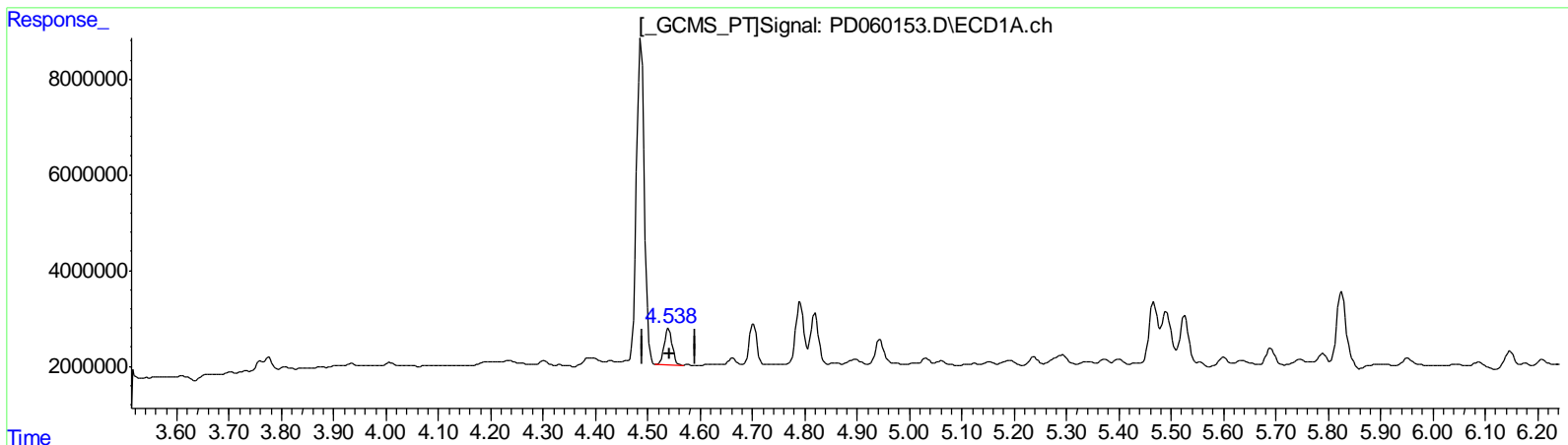
Data Path : Z:\pestpcbsrv\HPCHEM1\ECD_D\Data\PD112020\
 Data File : PD060153.D
 Signal(s) : Signal #1: ECD1A.ch Signal #2: ECD2B.ch
 Acq On : 20 Nov 2020 11:31
 Operator : DD\AJ
 Sample : L4711-04
 Misc :
 ALS Vial : 6 Sample Multiplier: 1

Instrument :
 ECD_D
ClientSampled :
 C0AZ8

Manual Integrations
APPROVED
 mohammad
 11/23/2020 12:03:03 PM

Integration File signal 1: autoint1.e
 Integration File signal 2: autoint2.e
 Quant Time: Nov 21 06:28:11 2020
 Quant Method : Z:\pestpcbsrv\HPCHEM1\ECD_D\Method\PD110320CLP.M
 Quant Title : GC Extractables
 QLast Update : Wed Nov 04 04:05:33 2020
 Response via : Initial Calibration
 Integrator: ChemStation

Volume Inj. : 1 µl
 Signal #1 Phase : ZB-MR2 Signal #2 Phase: ZB-MR1
 Signal #1 Info : 30M x 0.32mm x0.2 Signal #2 Info : 30M x 0.32mm x 0.50µm



QEdit

(4) Heptachlor (MA)
 4.540min 6.625 ng/ml
 response 7775562

(4) Heptachlor #2 (MA)
 5.210min 6.170 ng/ml m
 response 24461873

(+) = Expected Retention Time

Data Path : Z:\pestpcbsrv\HPCHEM1\ECD_D\Data\PD112020\
 Data File : PD060153.D
 Signal(s) : Signal #1: ECD1A.ch Signal #2: ECD2B.ch
 Acq On : 20 Nov 2020 11:31
 Operator : DD\AJ
 Sample : L4711-04
 Misc :
 ALS Vial : 6 Sample Multiplier: 1

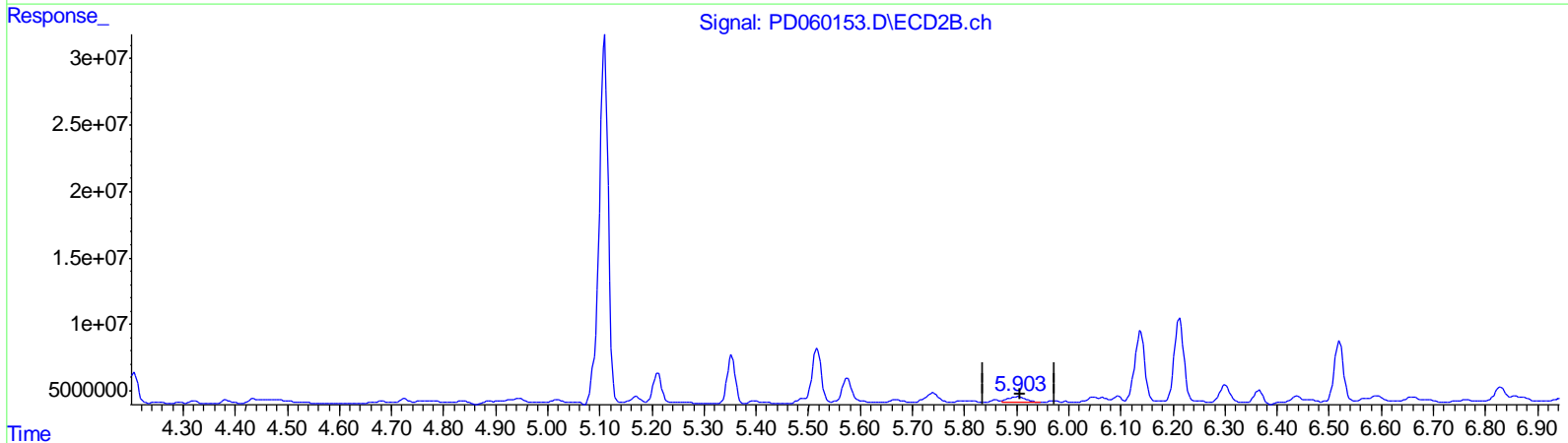
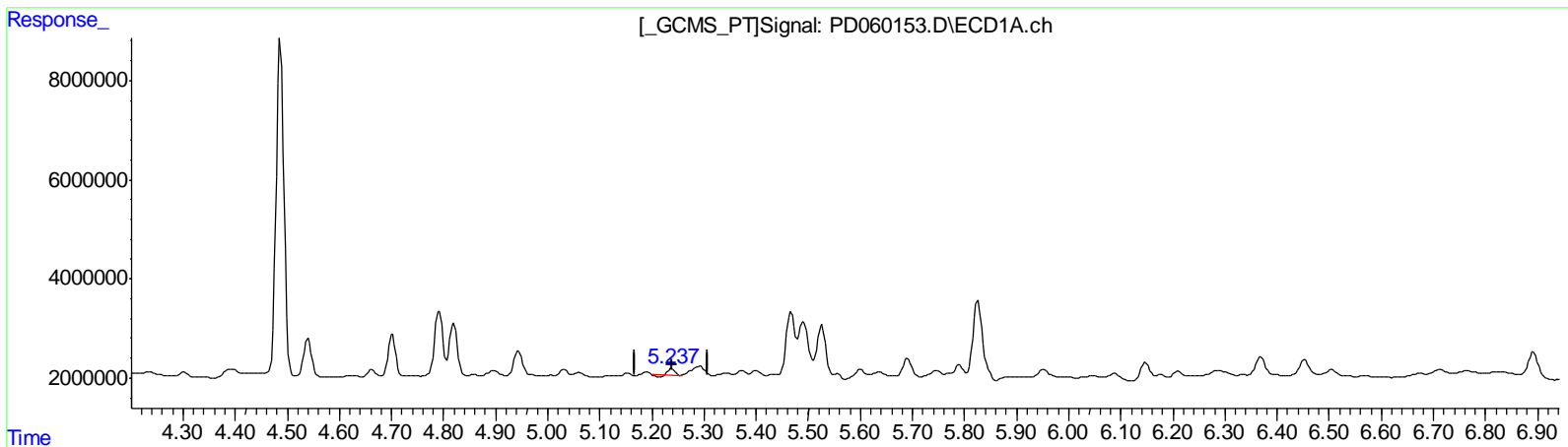
Instrument :
 ECD_D
 ClientSampled :
 C0AZ8

Manual Integrations
 APPROVED

mohammad
 11/23/2020 12:03:03 PM

Integration File signal 1: autoint1.e
 Integration File signal 2: autoint2.e
 Quant Time: Nov 21 06:28:11 2020
 Quant Method : Z:\pestpcbsrv\HPCHEM1\ECD_D\Method\PD110320CLP.M
 Quant Title : GC Extractables
 QLast Update : Wed Nov 04 04:05:33 2020
 Response via : Initial Calibration
 Integrator: ChemStation

Volume Inj. : 1 µl
 Signal #1 Phase : ZB-MR2 Signal #2 Phase: ZB-MR1
 Signal #1 Info : 30M x 0.32mm x0.2 Signal #2 Info : 30M x 0.32mm x 0.50µm



QEdit

(8) Heptachlor epoxide (B)

5.238min 0.803 ng/ml

response 848098

(8) Heptachlor epoxide #2 (B)

5.904min 3.208 ng/ml

response 10566142

(+) = Expected Retention Time

Data Path : Z:\pestpcbsrv\HPCHEM1\ECD_D\Data\PD112020\
 Data File : PD060153.D
 Signal(s) : Signal #1: ECD1A.ch Signal #2: ECD2B.ch
 Acq On : 20 Nov 2020 11:31
 Operator : DD\AJ
 Sample : L4711-04
 Misc :
 ALS Vial : 6 Sample Multiplier: 1

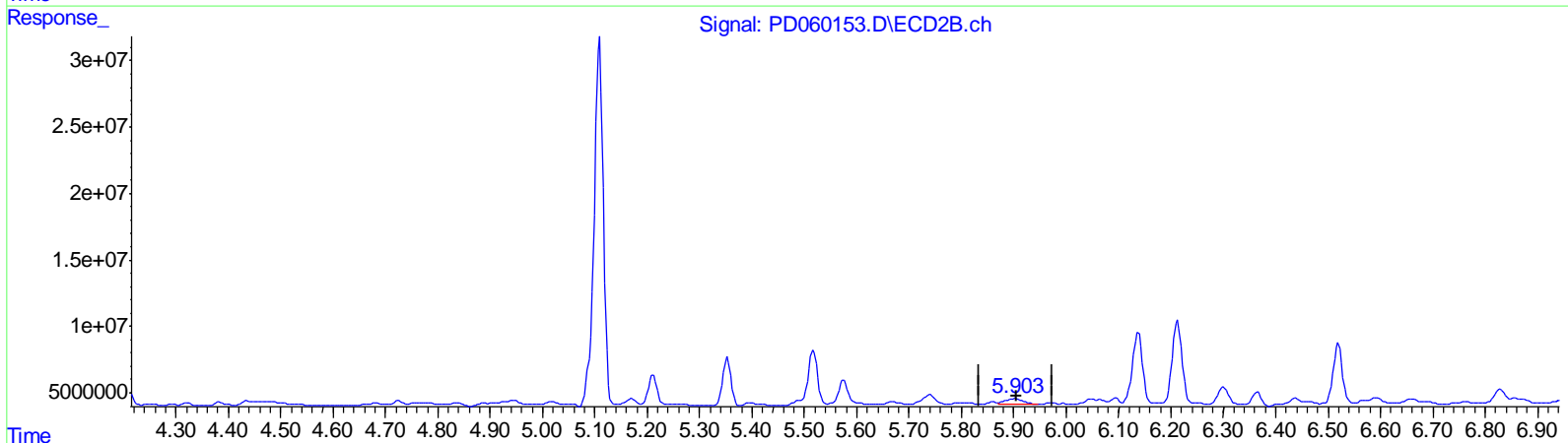
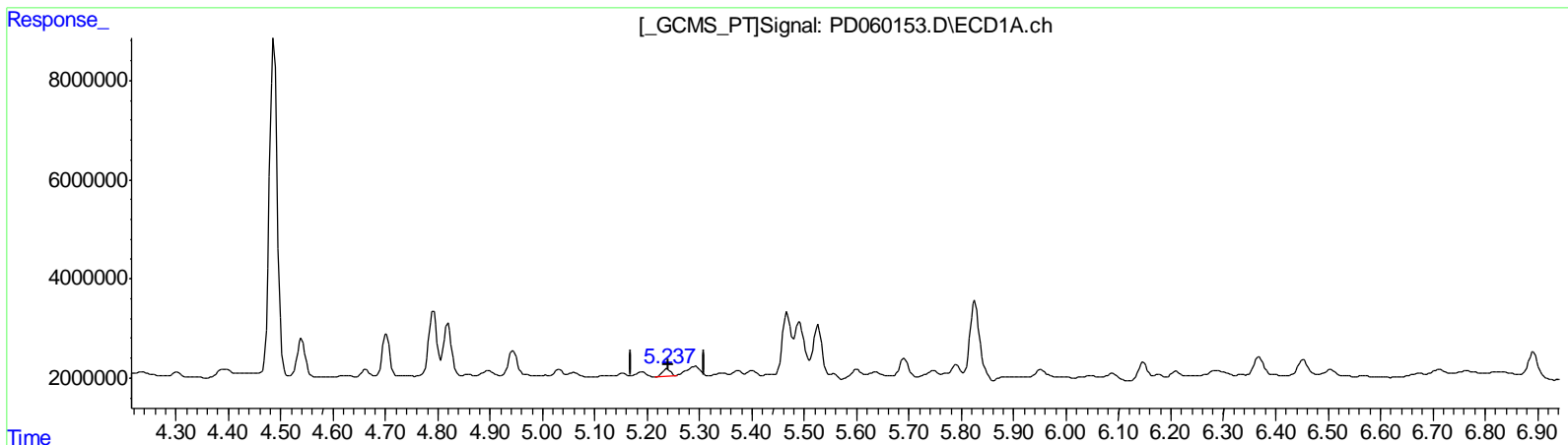
Instrument :
 ECD_D
 ClientSampled :
 C0AZ8

Manual Integrations
 APPROVED

mohammad
 11/23/2020 12:03:03 PM

Integration File signal 1: autoint1.e
 Integration File signal 2: autoint2.e
 Quant Time: Nov 21 06:28:11 2020
 Quant Method : Z:\pestpcbsrv\HPCHEM1\ECD_D\Method\PD110320CLP.M
 Quant Title : GC Extractables
 QLast Update : Wed Nov 04 04:05:33 2020
 Response via : Initial Calibration
 Integrator: ChemStation

Volume Inj. : 1 µl
 Signal #1 Phase : ZB-MR2 Signal #2 Phase: ZB-MR1
 Signal #1 Info : 30M x 0.32mm x0.2 Signal #2 Info : 30M x 0.32mm x 0.50µm



QEdit

(8) Heptachlor epoxide (B)
 5.237min 1.546 ng/ml m
 response 1633517

(8) Heptachlor epoxide #2 (B)
 5.904min 3.208 ng/ml
 response 10566142

(+) = Expected Retention Time

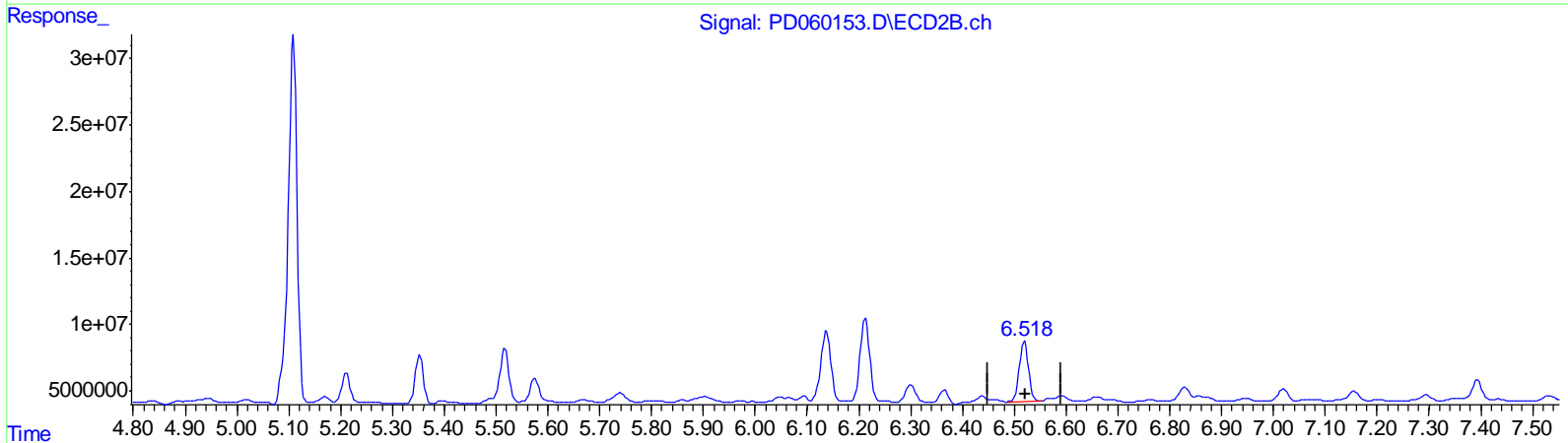
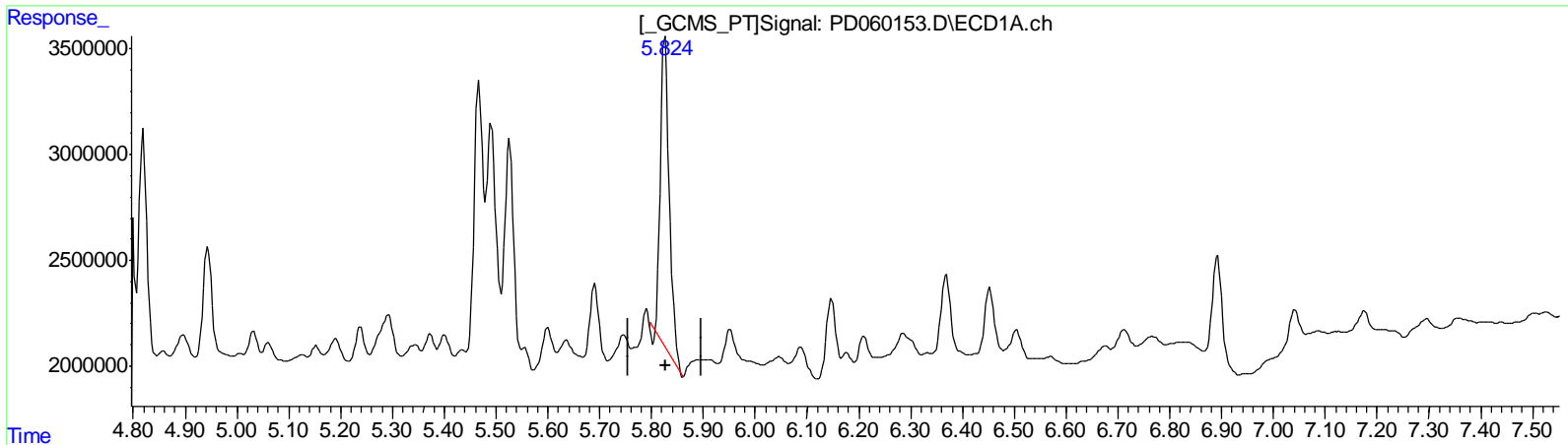
Data Path : Z:\pestpcbsrv\HPCHEM1\ECD_D\Data\PD112020\
 Data File : PD060153.D
 Signal(s) : Signal #1: ECD1A.ch Signal #2: ECD2B.ch
 Acq On : 20 Nov 2020 11:31
 Operator : DD\AJ
 Sample : L4711-04
 Misc :
 ALS Vial : 6 Sample Multiplier: 1

Instrument :
 ECD_D
ClientSampled :
 C0AZ8

Manual Integrations
APPROVED
 mohammad
 11/23/2020 12:03:03 PM

Integration File signal 1: autoint1.e
 Integration File signal 2: autoint2.e
 Quant Time: Nov 21 06:28:11 2020
 Quant Method : Z:\pestpcbsrv\HPCHEM1\ECD_D\Method\PD110320CLP.M
 Quant Title : GC Extractables
 QLast Update : Wed Nov 04 04:05:33 2020
 Response via : Initial Calibration
 Integrator: ChemStation

Volume Inj. : 1 µl
 Signal #1 Phase : ZB-MR2 Signal #2 Phase: ZB-MR1
 Signal #1 Info : 30M x 0.32mm x0.2 Signal #2 Info : 30M x 0.32mm x 0.50µm



QEdit

(13) Dieldrin (MA)
 5.826min 16.057 ng/ml
 response 17495180

(13) Dieldrin #2 (MA)
 6.520min 15.645 ng/ml
 response 54630699

(+) = Expected Retention Time

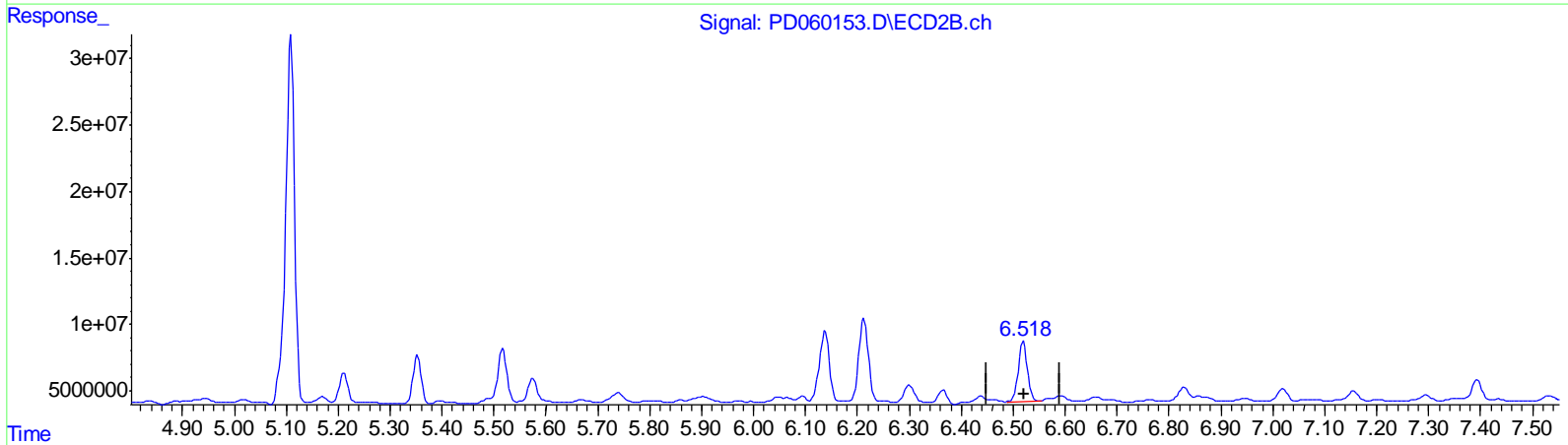
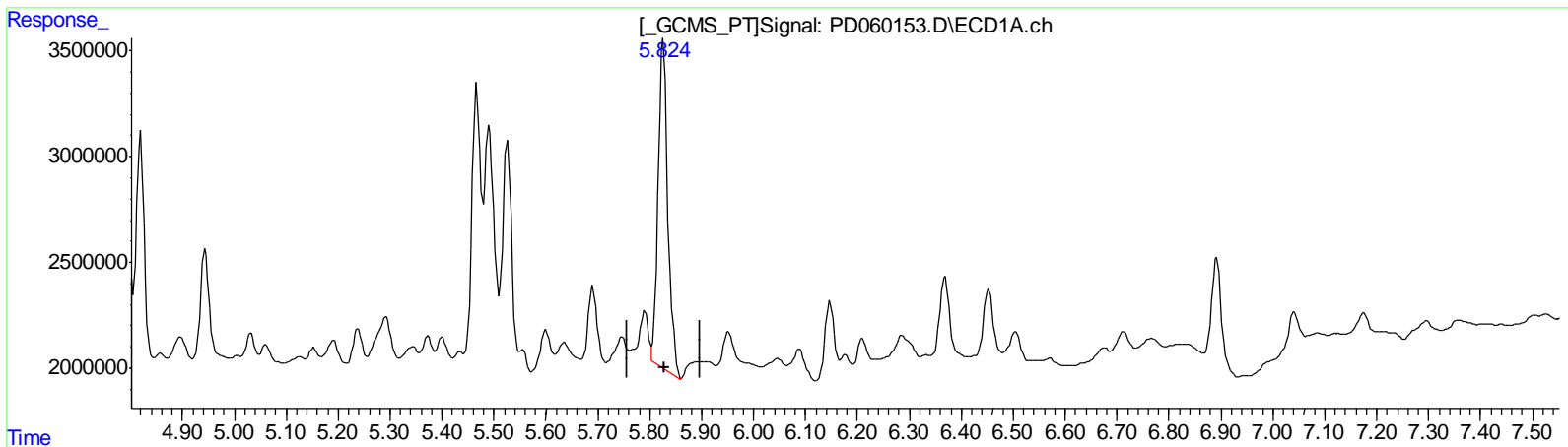
Data Path : Z:\pestpcbsrv\HPCHEM1\ECD_D\Data\PD112020\
 Data File : PD060153.D
 Signal(s) : Signal #1: ECD1A.ch Signal #2: ECD2B.ch
 Acq On : 20 Nov 2020 11:31
 Operator : DD\AJ
 Sample : L4711-04
 Misc :
 ALS Vial : 6 Sample Multiplier: 1

Instrument :
 ECD_D
ClientSampled :
 C0AZ8

Manual Integrations
APPROVED
 mohammad
 11/23/2020 12:03:03 PM

Integration File signal 1: autoint1.e
 Integration File signal 2: autoint2.e
 Quant Time: Nov 21 06:28:11 2020
 Quant Method : Z:\pestpcbsrv\HPCHEM1\ECD_D\Method\PD110320CLP.M
 Quant Title : GC Extractables
 QLast Update : Wed Nov 04 04:05:33 2020
 Response via : Initial Calibration
 Integrator: ChemStation

Volume Inj. : 1 µl
 Signal #1 Phase : ZB-MR2 Signal #2 Phase: ZB-MR1
 Signal #1 Info : 30M x 0.32mm x0.2 Signal #2 Info : 30M x 0.32mm x 0.50µm



QEdit

(13) Dieldrin (MA)
 5.824min 18.578 ng/ml m
 response 20242077

(13) Dieldrin #2 (MA)
 6.520min 15.645 ng/ml
 response 54630699

(+) = Expected Retention Time

Data Path : Z:\pestpcbsrv\HPCHEM1\ECD_D\Data\PD112020\
 Data File : PD060153.D
 Signal(s) : Signal #1: ECD1A.ch Signal #2: ECD2B.ch
 Acq On : 20 Nov 2020 11:31
 Operator : DD\AJ
 Sample : L4711-04
 Misc :
 ALS Vial : 6 Sample Multiplier: 1

Instrument :
 ECD_D
 ClientSampleId :
 C0AZ8

Manual Integrations
APPROVED
 mohammad
 11/23/2020 12:03:03 PM

Integration File signal 1: autoint1.e
 Integration File signal 2: autoint2.e
 Quant Time: Nov 21 06:28:11 2020
 Quant Method : Z:\pestpcbsrv\HPCHEM1\ECD_D\Method\PD110320CLP.M
 Quant Title : GC Extractables
 QLast Update : Wed Nov 04 04:05:33 2020
 Response via : Initial Calibration
 Integrator: ChemStation

Volume Inj. : 1 µl
 Signal #1 Phase : ZB-MR2 Signal #2 Phase: ZB-MR1
 Signal #1 Info : 30M x 0.32mm x0.2 Signal #2 Info : 30M x 0.32mm x 0.50µm

Compound	RT#1	RT#2	Resp#1	Resp#2	ng/ml	ng/ml

System Monitoring Compounds						
1) SA Tetrachlo...	3.505	4.024	8866589	35149067	10.346	11.791
27) SA Decachlor...	8.301	9.107	13007366	36880954	15.655	14.992
Target Compounds						
3) MA gamma-BHC...	4.235	4.682	798434	2334961	0.653m	0.577
4) MA Heptachlor	4.540	5.210	7775562	24461873	6.625	6.170m
5) MB Aldrin	4.790	5.517	14903901	46540510	12.982m	12.544
8) B Heptachlo...	5.237	5.904	1633517	10566142	1.546m	3.208 #
10) B trans-Chl...	5.467	6.138	15887954	67786273	14.959	19.730 #
11) B cis-Chlor...	5.526	6.213	13420096	80757116	12.686	23.521 #
12) B 4,4'-DDE	5.691	6.366	3897489	12210020	3.813	3.776
13) MA Dieldrin	5.824	6.520	20242077	54630699	18.578m	15.645
15) B Endosulfa...	6.369	6.947	4849279	3218825	5.377	1.139 #
17) MA 4,4'-DDT	6.453	7.156	3742284	10603938	4.164	3.897

AJ
 11/25/20

(f)=RT Delta > 1/2 Window (#)=Amounts differ by > 25% (m)=manual int.