

Data Path : Z:\pestpcbsrv\HPCHEM1\ECD\_D\Data\PD112022\  
 Data File : PD073147.D  
 Signal(s) : Signal #1: ECD1A.ch Signal #2: ECD2B.ch  
 Acq On : 19 Nov 2022 17:34  
 Operator : AR\AJ  
 Sample : N5713-05  
 Misc :  
 ALS Vial : 10 Sample Multiplier: 1

Instrument :  
 ECD\_D  
 ClientSampleId :

Integration File signal 1: autoint1.e  
 Integration File signal 2: autoint2.e  
 Quant Time: Nov 20 23:43:03 2022  
 Quant Method : Z:\pestpcbsrv\HPCHEM1\ECD\_D\Method\PD111722CLP.M  
 Quant Title : GC Extractables  
 QLast Update : Thu Nov 17 06:19:59 2022  
 Response via : Initial Calibration  
 Integrator: ChemStation

Volume Inj. : 1 µl  
 Signal #1 Phase : ZB-MR2 Signal #2 Phase: ZB-MR1  
 Signal #1 Info : 30M x 0.32mm x0.2 Signal #2 Info : 30M x 0.32mm x 0.50µm

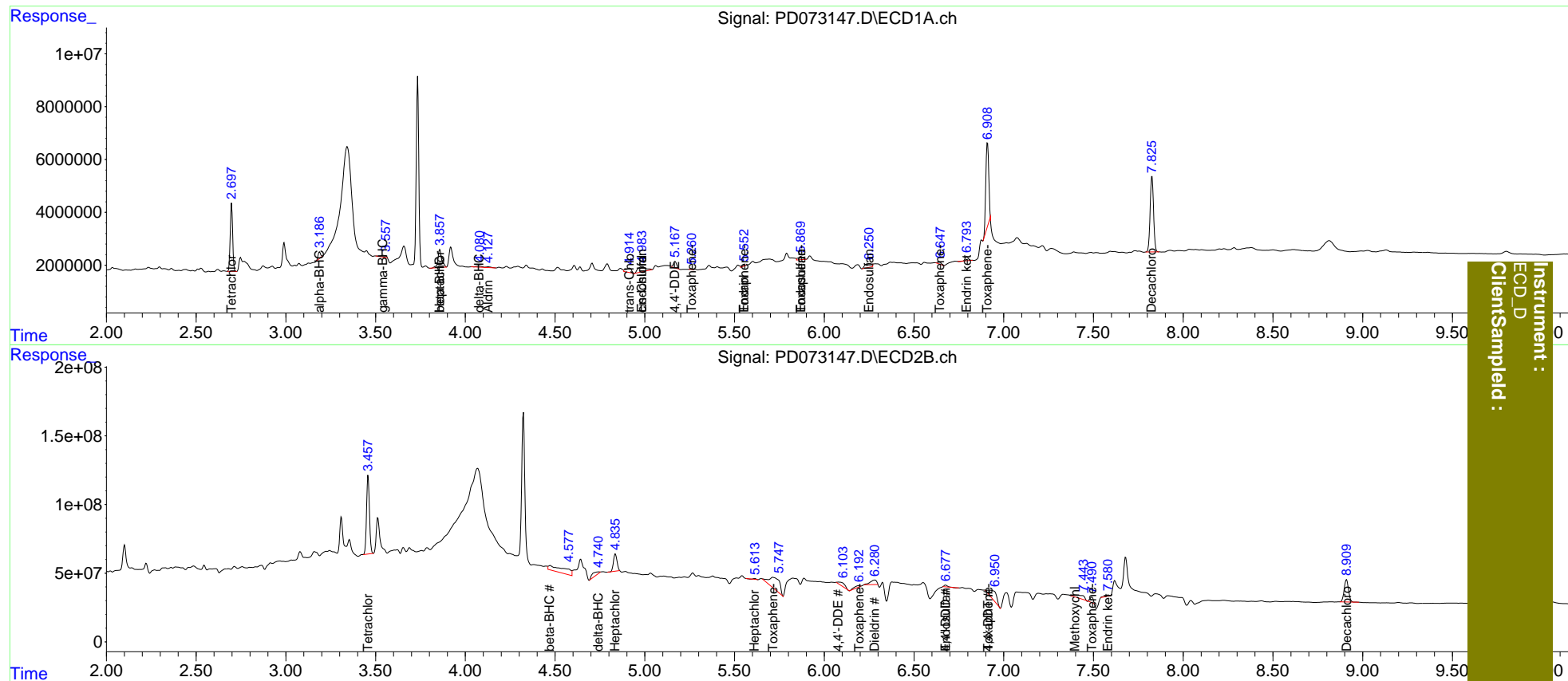
Compound	RT#1	RT#2	Resp#1	Resp#2	ng/ml	ng/ml
System Monitoring Compounds						
1) SA Tetrachlo...	2.698	3.459	24007802	643.6E6	10.012	9.853
27) SA Decachlor...	7.826	8.910	37884041	274.4E6	16.602	18.544
Target Compounds						
2) A alpha-BHC	3.188	0.000	2328011	0	0.636	N.D. #
3) MA gamma-BHC...	3.543	4.247	1328176	3318872	0.400	<MDL #
4) MA Heptachlor	3.858	4.836	9594857	173.1E6	2.872	3.770 #
6) B beta-BHC	3.858	4.473	9594857	268.9E6	5.976	10.063 #
7) B delta-BHC	4.078	4.744f	978045	64410411	0.269	1.184 #
8) B Heptachlo...	4.640	5.613	-290383	6200984	N.D.	0.183
9) A Endosulfan I	4.986	5.976	6241324	-1608984	2.209	N.D. #
10) B trans-Chl...	4.915	5.888f	3481422	-35256106	1.130	N.D. #
11) B cis-Chlor...	4.986	5.888f	6241324	-35256106	1.993	N.D. #
12) B 4,4'-DDE	5.169	6.080	3174718	64209463	1.061	2.139 #
13) MA Dieldrin	5.261	6.282	232248	79733660	<MDL	2.645 #
14) MA Endrin	5.554	6.500	637465	-3817570	0.235	N.D. #
15) B Endosulfa...	5.870	6.677f	2302689	14784386	0.855	0.612 #
16) A 4,4'-DDD	0.000	6.677f	0	14784386	N.D.	0.645
17) MA 4,4'-DDT	0.000	6.918	0	199.2E6	N.D.	9.277
20) A Methoxychlor	6.559	7.399	-308314	78719641	N.D.	8.437
21) B Endrin ke...	6.795	7.583	1732774	11822729	0.594	0.530
22) Toxaphene-1	5.261	5.714f	232248	355.8E6	15.323	3027.698 #
23) Toxaphene-2	5.554f	6.193f	637465	28621498	40.766	133.559 #
24) Toxaphene-3	5.870	6.918f	2302689	199.2E6	107.129	396.874 #
26) Toxaphene-5	6.910f	7.491	36970047	46755298	778.559	171.154 #

(f)=RT Delta > 1/2 Window (#)=Amounts differ by > 25% (m)=manual int.

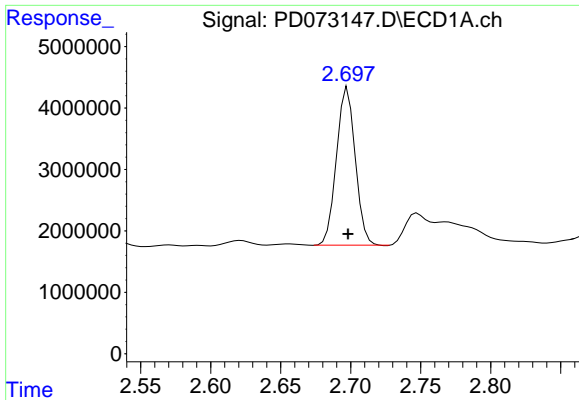
Data Path : Z:\pestpcbsrv\HPCHEM1\ECD\_D\Data\PD112022\  
 Data File : PD073147.D  
 Signal(s) : Signal #1: ECD1A.ch Signal #2: ECD2B.ch  
 Acq On : 19 Nov 2022 17:34  
 Operator : AR\AJ  
 Sample : N5713-05  
 Misc :  
 ALS Vial : 10 Sample Multiplier: 1

Integration File signal 1: autoint1.e  
 Integration File signal 2: autoint2.e  
 Quant Time: Nov 20 23:43:03 2022  
 Quant Method : Z:\pestpcbsrv\HPCHEM1\ECD\_D\Method\PD111722CLP.M  
 Quant Title : GC Extractables  
 QLast Update : Thu Nov 17 06:19:59 2022  
 Response via : Initial Calibration  
 Integrator: ChemStation

Volume Inj. : 1 µl  
 Signal #1 Phase : ZB-MR2 Signal #2 Phase: ZB-MR1  
 Signal #1 Info : 30M x 0.32mm x0.2 Signal #2 Info : 30M x 0.32mm x 0.50µm

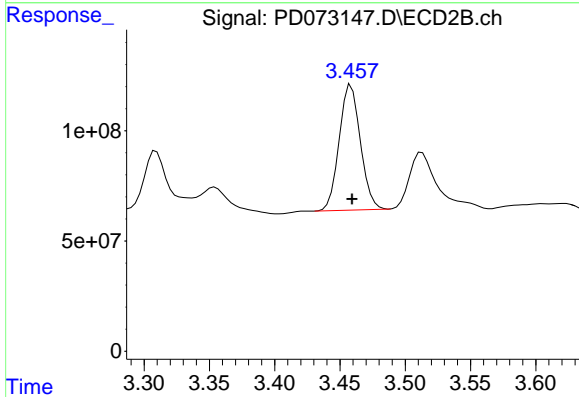


Instrument : ECD\_D  
 Client Sampled :

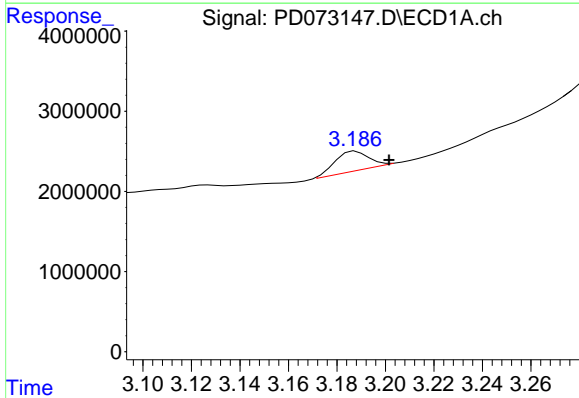


#1 Tetrachloro-m-xylene  
 R.T.: 2.698 min  
 Delta R.T.: 0.000 min  
 Response: 24007802  
 Conc: 10.01 ng/ml

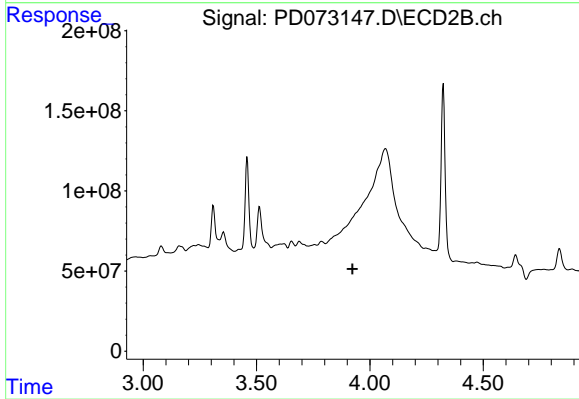
Instrument :  
 ECD\_D  
 ClientSampleId :



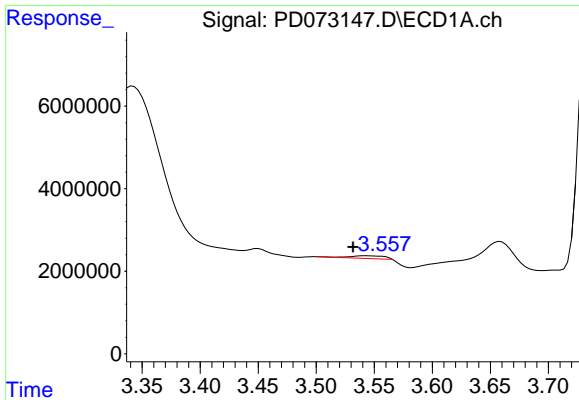
#1 Tetrachloro-m-xylene  
 R.T.: 3.459 min  
 Delta R.T.: 0.000 min  
 Response: 643618750  
 Conc: 9.85 ng/ml



#2 alpha-BHC  
 R.T.: 3.188 min  
 Delta R.T.: -0.013 min  
 Response: 2328011  
 Conc: 0.64 ng/ml

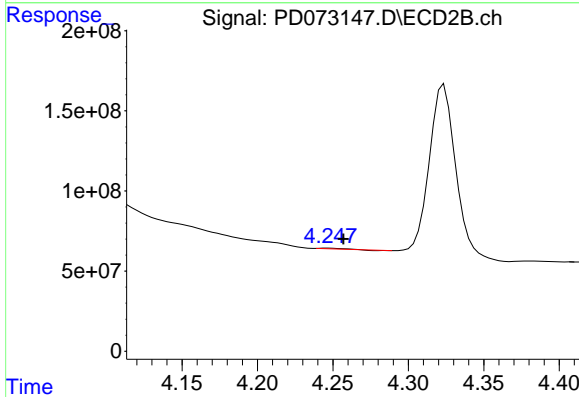


#2 alpha-BHC  
 R.T.: 0.000 min  
 Exp R.T. : 3.924 min  
 Response: 0  
 Conc: N.D.

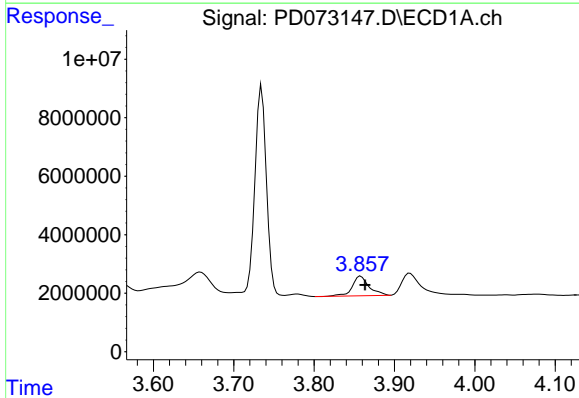


#3 gamma-BHC (Lindane)  
 R.T.: 3.543 min  
 Delta R.T.: 0.011 min  
 Response: 1328176  
 Conc: 0.40 ng/ml

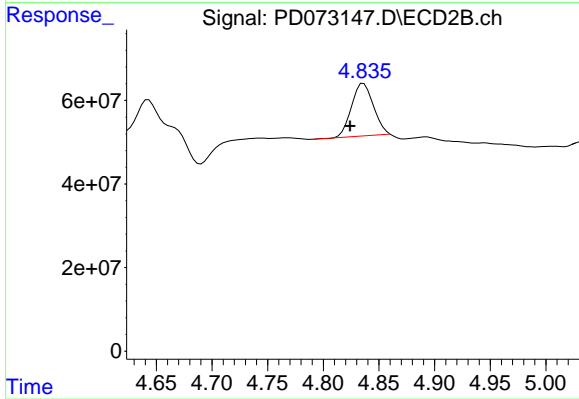
Instrument :  
 ECD\_D  
 ClientSampleId :



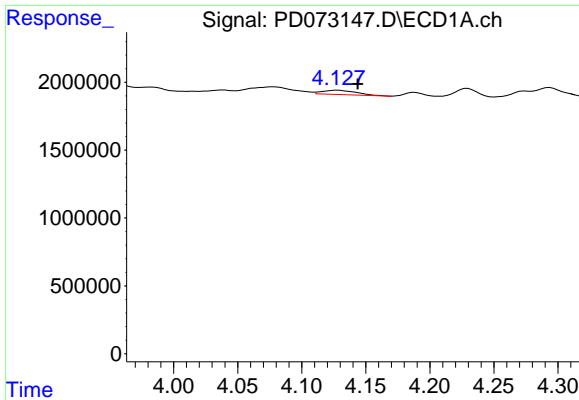
#3 gamma-BHC (Lindane)  
 R.T.: 4.247 min  
 Delta R.T.: -0.010 min  
 Response: 3318872  
 Conc: N.D.



#4 Heptachlor  
 R.T.: 3.858 min  
 Delta R.T.: -0.005 min  
 Response: 9594857  
 Conc: 2.87 ng/ml

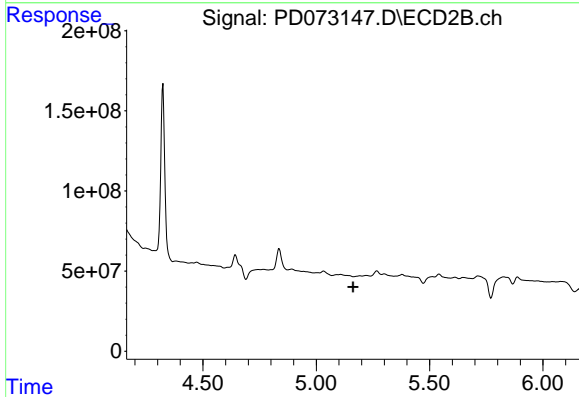


#4 Heptachlor  
 R.T.: 4.836 min  
 Delta R.T.: 0.012 min  
 Response: 173099749  
 Conc: 3.77 ng/ml

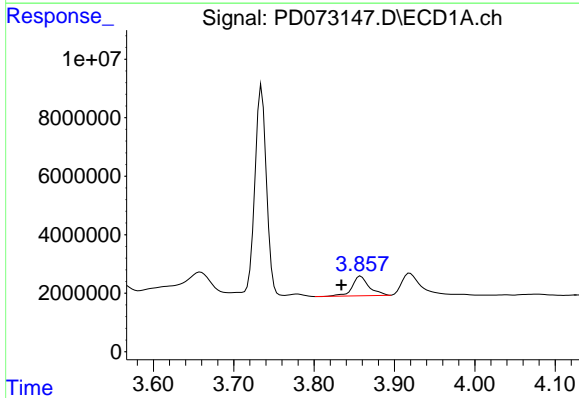


#5 Aldrin  
 R.T.: 4.128 min  
 Delta R.T.: -0.016 min  
 Response: 580901  
 Conc: 0.17 ng/ml

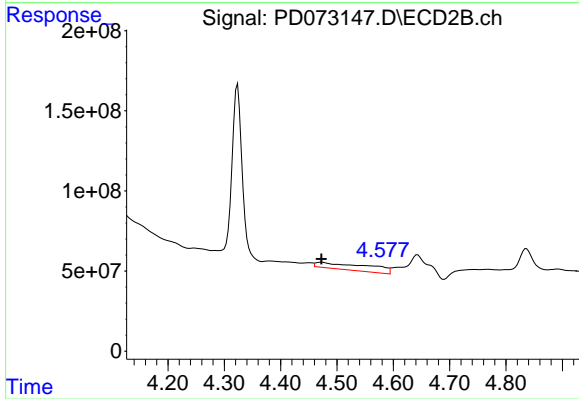
Instrument :  
 ECD\_D  
 ClientSampleId :



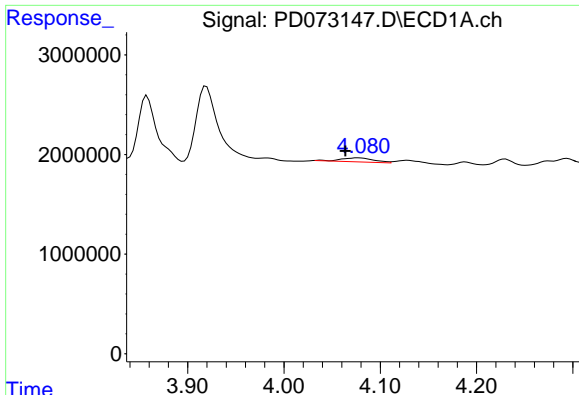
#5 Aldrin  
 R.T.: 5.194 min  
 Delta R.T.: 0.031 min  
 Response: -7428427  
 Conc: N.D.



#6 beta-BHC  
 R.T.: 3.858 min  
 Delta R.T.: 0.024 min  
 Response: 9594857  
 Conc: 5.98 ng/ml



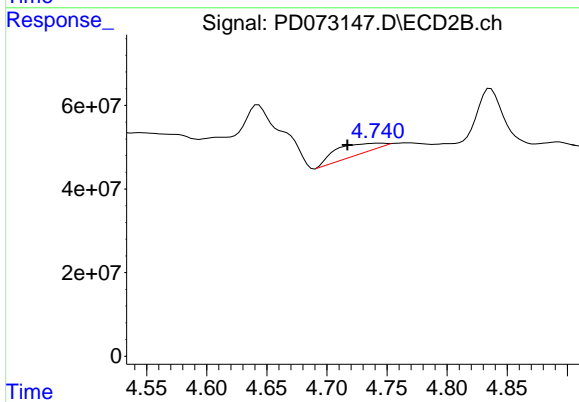
#6 beta-BHC  
 R.T.: 4.473 min  
 Delta R.T.: 0.000 min  
 Response: 268866844  
 Conc: 10.06 ng/ml



#7 delta-BHC

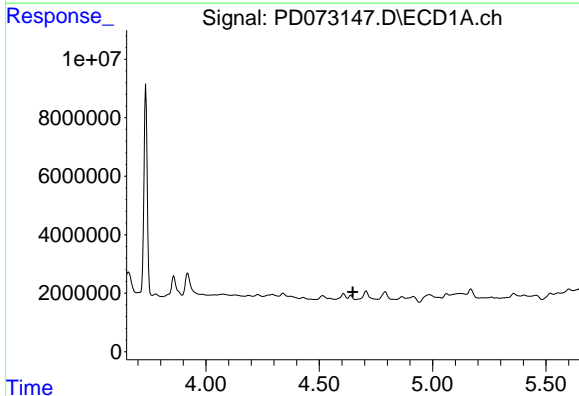
R.T.: 4.078 min  
 Delta R.T.: 0.014 min  
 Response: 978045  
 Conc: 0.27 ng/ml

Instrument :  
 ECD\_D  
 ClientSampleId :



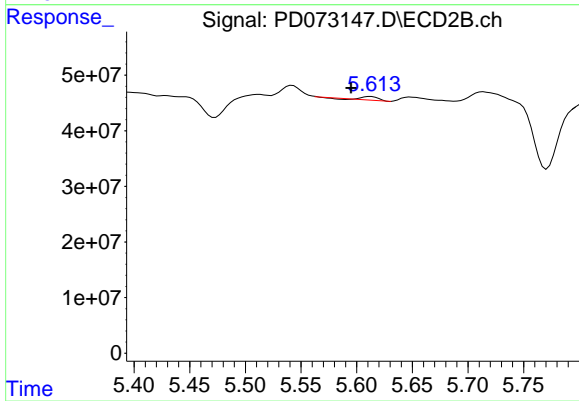
#7 delta-BHC

R.T.: 4.744 min  
 Delta R.T.: 0.027 min  
 Response: 64410411  
 Conc: 1.18 ng/ml



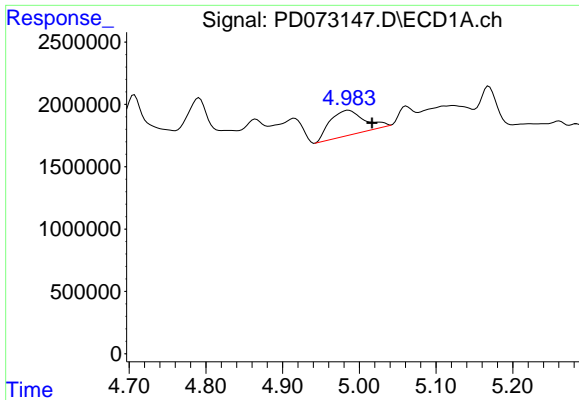
#8 Heptachlor epoxide

R.T.: 4.640 min  
 Delta R.T.: -0.009 min  
 Response: -290383  
 Conc: N.D.



#8 Heptachlor epoxide

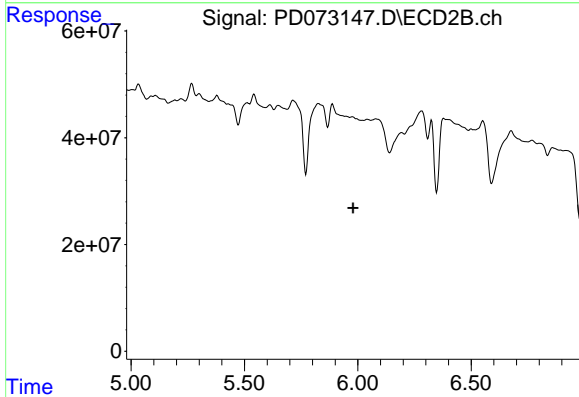
R.T.: 5.613 min  
 Delta R.T.: 0.018 min  
 Response: 6200984  
 Conc: 0.18 ng/ml



#9 Endosulfan I

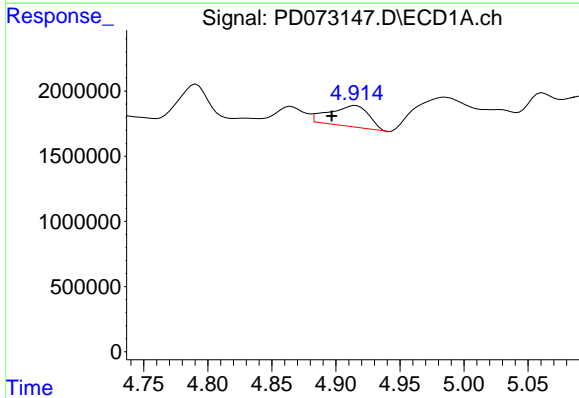
R.T.: 4.986 min  
 Delta R.T.: -0.031 min  
 Response: 6241324  
 Conc: 2.21 ng/ml

Instrument :  
 ECD\_D  
 ClientSampleId :



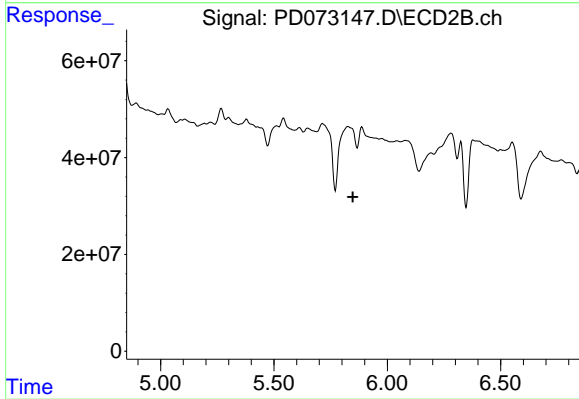
#9 Endosulfan I

R.T.: 5.976 min  
 Delta R.T.: -0.002 min  
 Response: -1608984  
 Conc: N.D.



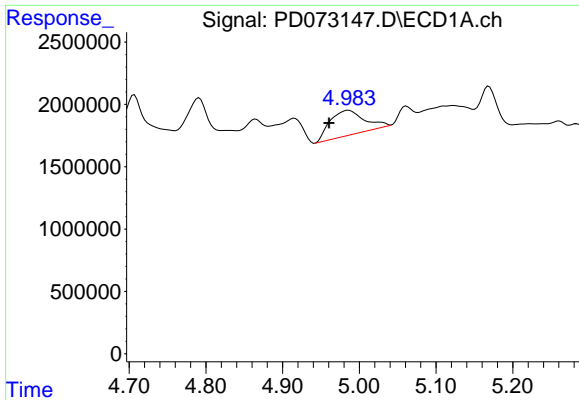
#10 trans-Chlordane

R.T.: 4.915 min  
 Delta R.T.: 0.019 min  
 Response: 3481422  
 Conc: 1.13 ng/ml



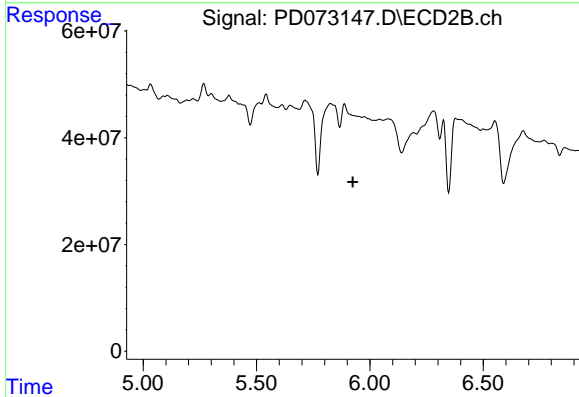
#10 trans-Chlordane

R.T.: 5.888 min  
 Delta R.T.: 0.040 min  
 Response: -35256106  
 Conc: N.D.

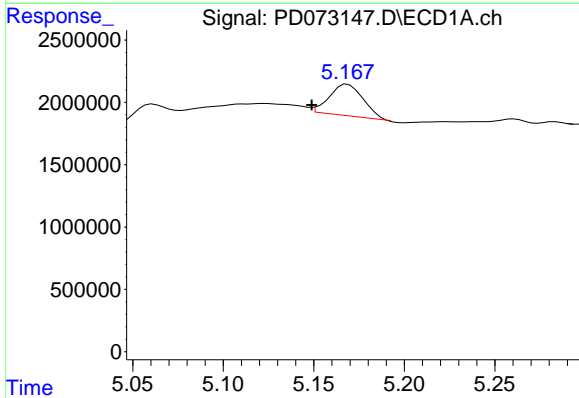


#11 cis-Chlordane  
 R.T.: 4.986 min  
 Delta R.T.: 0.025 min  
 Response: 6241324  
 Conc: 1.99 ng/ml

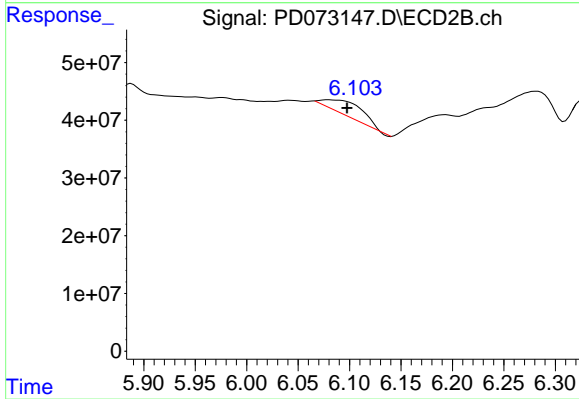
Instrument :  
 ECD\_D  
 ClientSampleId :



#11 cis-Chlordane  
 R.T.: 5.888 min  
 Delta R.T.: -0.036 min  
 Response: -35256106  
 Conc: N.D.

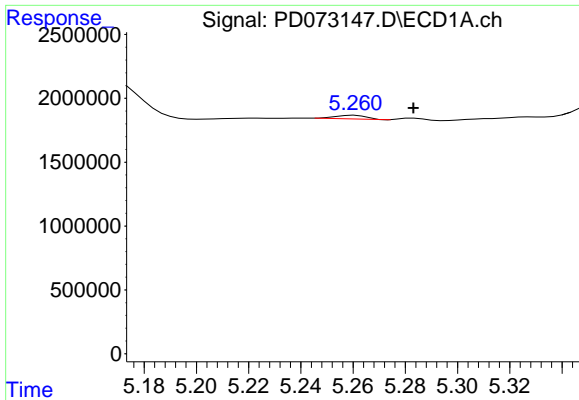


#12 4,4'-DDE  
 R.T.: 5.169 min  
 Delta R.T.: 0.020 min  
 Response: 3174718  
 Conc: 1.06 ng/ml



#12 4,4'-DDE  
 R.T.: 6.080 min  
 Delta R.T.: -0.018 min  
 Response: 64209463  
 Conc: 2.14 ng/ml

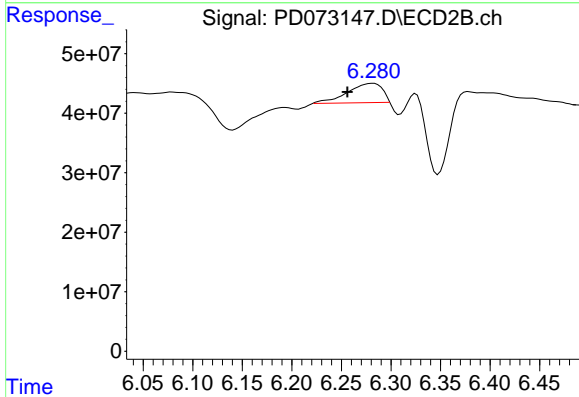




#13 Dieldrin

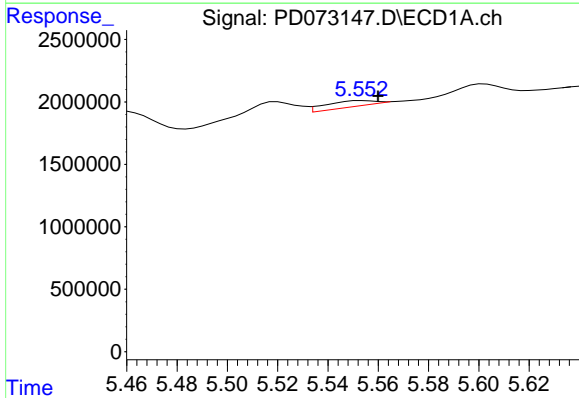
R.T.: 5.261 min  
 Delta R.T.: -0.023 min  
 Response: 232248  
 Conc: N.D.

Instrument :  
 ECD\_D  
 ClientSampleId :



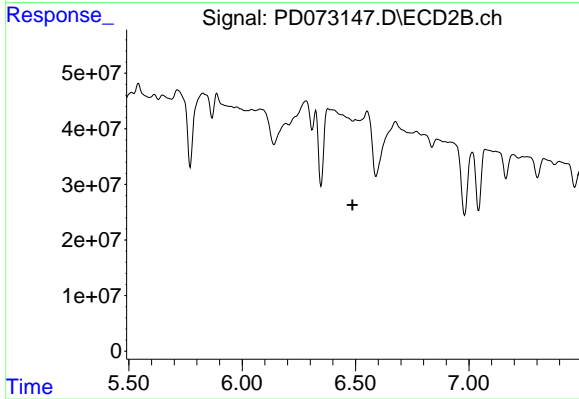
#13 Dieldrin

R.T.: 6.282 min  
 Delta R.T.: 0.025 min  
 Response: 79733660  
 Conc: 2.65 ng/ml



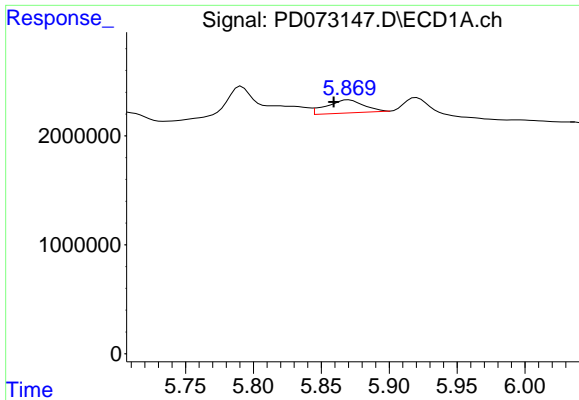
#14 Endrin

R.T.: 5.554 min  
 Delta R.T.: -0.006 min  
 Response: 637465  
 Conc: 0.24 ng/ml



#14 Endrin

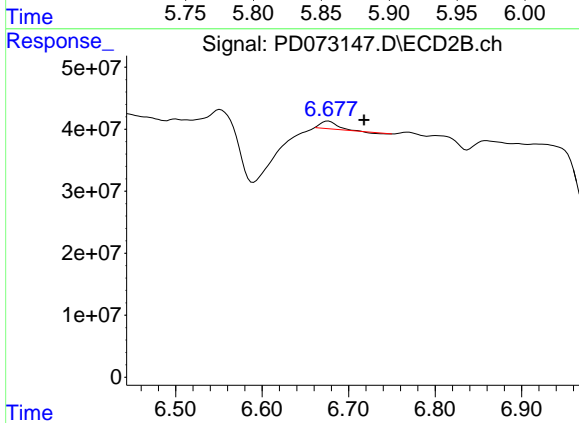
R.T.: 6.500 min  
 Delta R.T.: 0.013 min  
 Response: -3817570  
 Conc: N.D.



#15 Endosulfan II

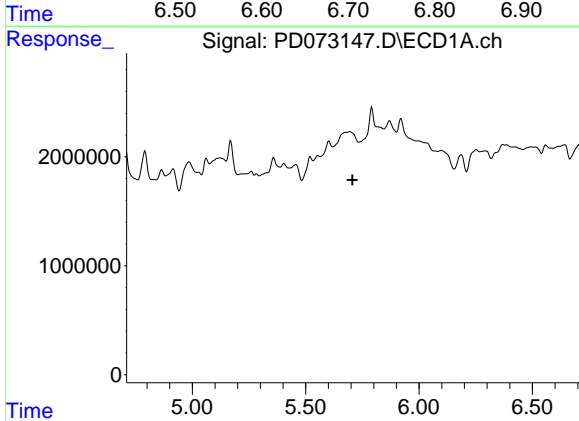
R.T.: 5.870 min  
 Delta R.T.: 0.011 min  
 Response: 2302689  
 Conc: 0.86 ng/ml

Instrument :  
 ECD\_D  
 ClientSampleId :



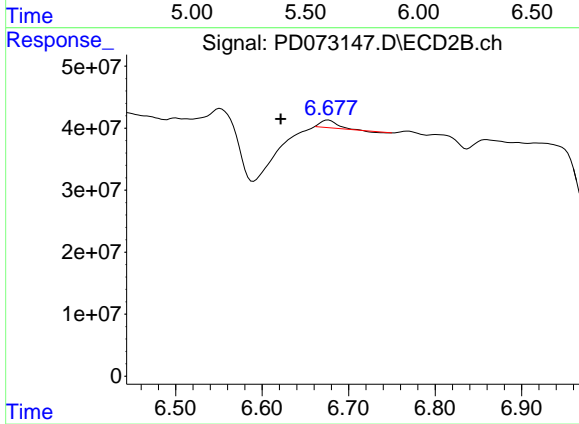
#15 Endosulfan II

R.T.: 6.677 min  
 Delta R.T.: -0.041 min  
 Response: 14784386  
 Conc: 0.61 ng/ml



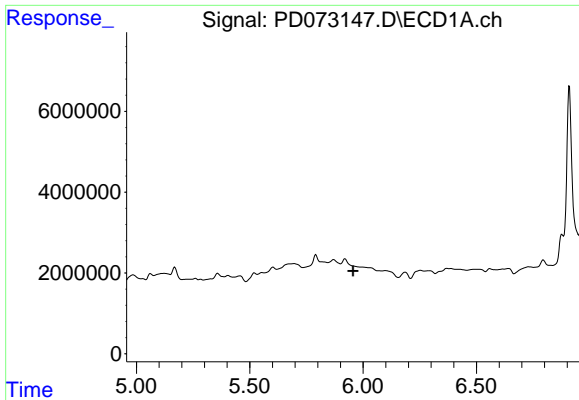
#16 4,4'-DDD

R.T.: 0.000 min  
 Exp R.T. : 5.707 min  
 Response: 0  
 Conc: N.D.



#16 4,4'-DDD

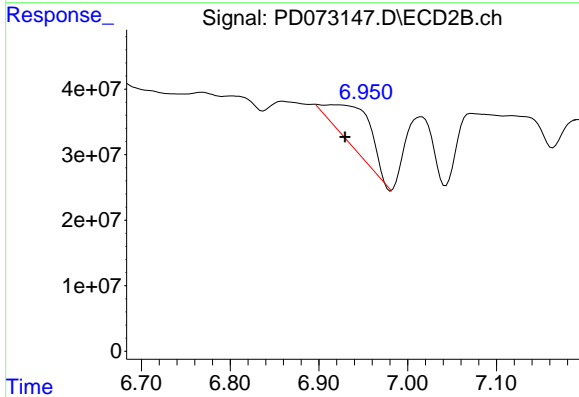
R.T.: 6.677 min  
 Delta R.T.: 0.055 min  
 Response: 14784386  
 Conc: 0.65 ng/ml



#17 4,4'-DDT

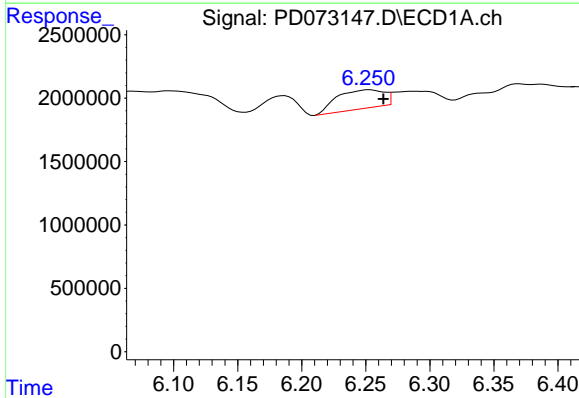
R.T.: 0.000 min  
 Exp R.T.: 5.955 min  
 Response: 0  
 Conc: N.D.

Instrument :  
 ECD\_D  
 ClientSampleId :



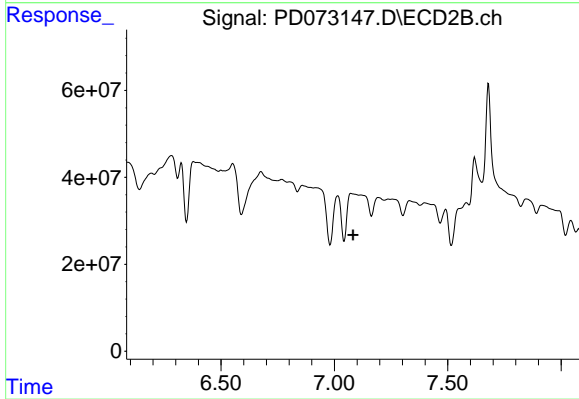
#17 4,4'-DDT

R.T.: 6.918 min  
 Delta R.T.: -0.012 min  
 Response: 199244124  
 Conc: 9.28 ng/ml



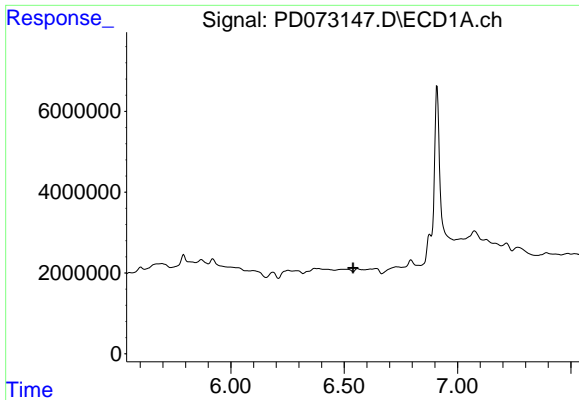
#19 Endosulfan Sulfate

R.T.: 6.253 min  
 Delta R.T.: -0.011 min  
 Response: 3739663  
 Conc: 1.49 ng/ml



#19 Endosulfan Sulfate

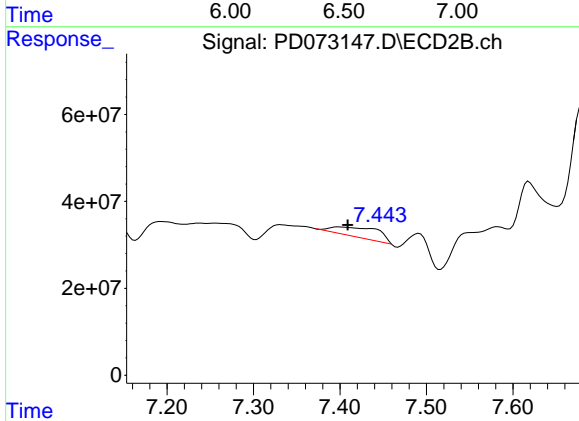
R.T.: 7.074 min  
 Delta R.T.: -0.009 min  
 Response: -114018374  
 Conc: N.D.



#20 Methoxychlor

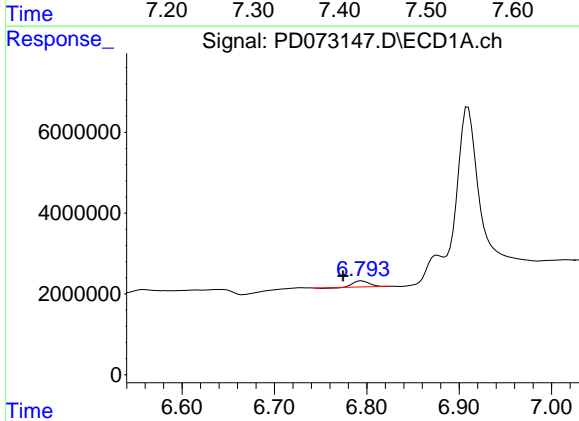
R.T.: 6.559 min  
 Delta R.T.: 0.020 min  
 Response: -308314  
 Conc: N.D.

Instrument :  
 ECD\_D  
 ClientSampleId :



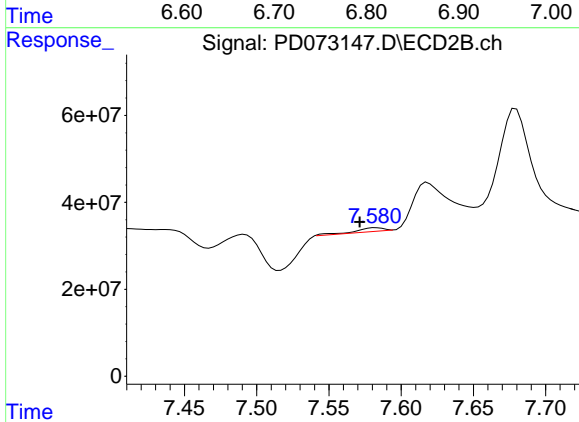
#20 Methoxychlor

R.T.: 7.399 min  
 Delta R.T.: -0.010 min  
 Response: 78719641  
 Conc: 8.44 ng/ml



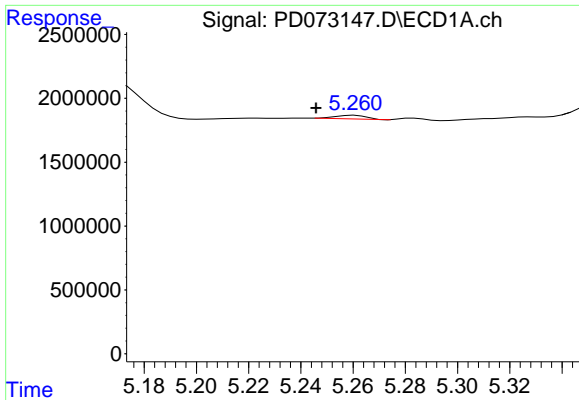
#21 Endrin ketone

R.T.: 6.795 min  
 Delta R.T.: 0.021 min  
 Response: 1732774  
 Conc: 0.59 ng/ml



#21 Endrin ketone

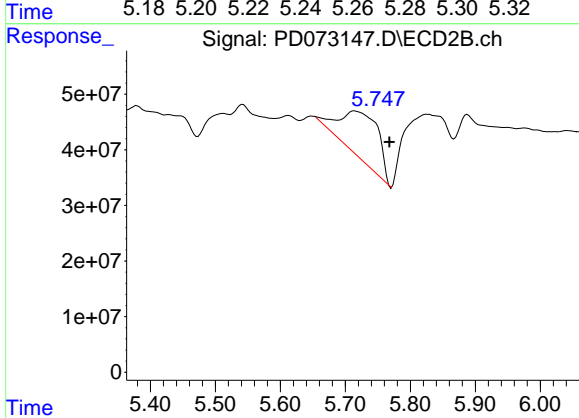
R.T.: 7.583 min  
 Delta R.T.: 0.011 min  
 Response: 11822729  
 Conc: 0.53 ng/ml



#22 Toxaphene-1

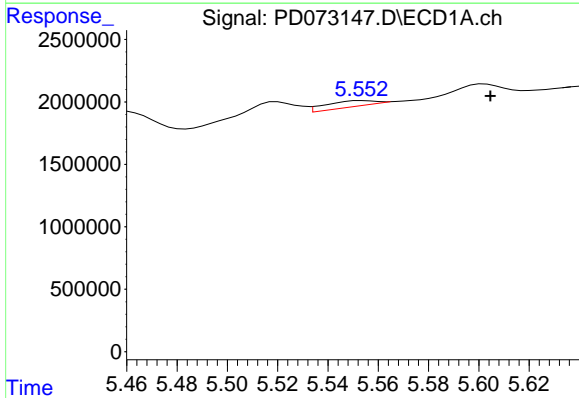
R.T.: 5.261 min  
 Delta R.T.: 0.015 min  
 Response: 232248  
 Conc: 15.32 ng/ml

Instrument :  
 ECD\_D  
 ClientSampleId :



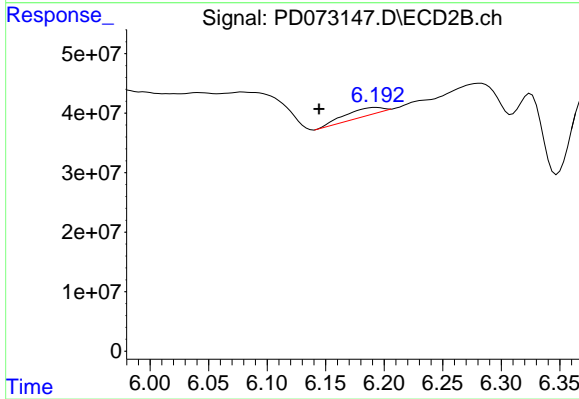
#22 Toxaphene-1

R.T.: 5.714 min  
 Delta R.T.: -0.054 min  
 Response: 355778817  
 Conc: 3027.70 ng/ml



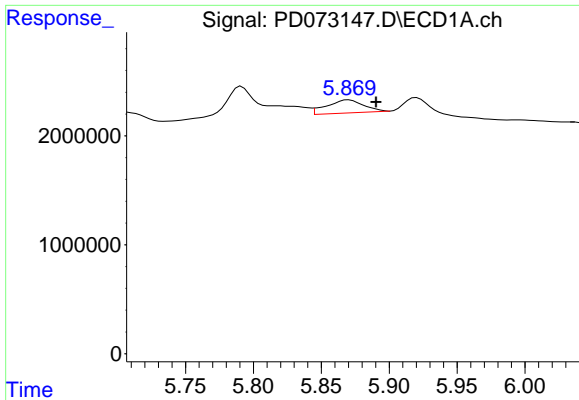
#23 Toxaphene-2

R.T.: 5.554 min  
 Delta R.T.: -0.051 min  
 Response: 637465  
 Conc: 40.77 ng/ml



#23 Toxaphene-2

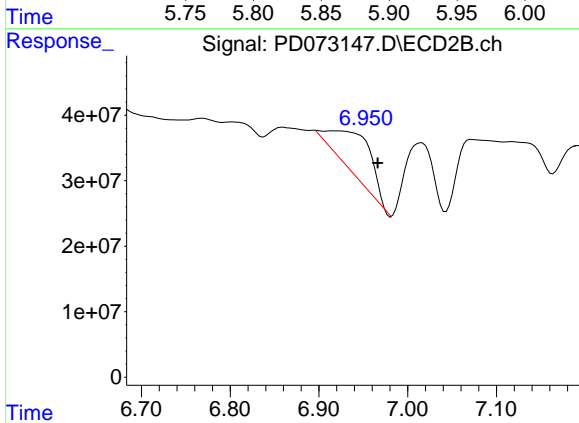
R.T.: 6.193 min  
 Delta R.T.: 0.049 min  
 Response: 28621498  
 Conc: 133.56 ng/ml



#24 Toxaphene-3

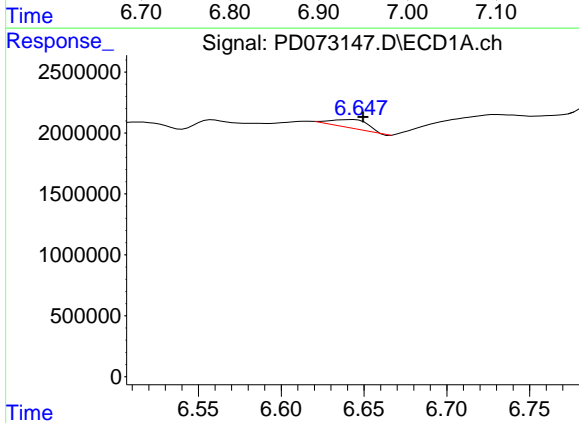
R.T.: 5.870 min  
 Delta R.T.: -0.020 min  
 Response: 2302689  
 Conc: 107.13 ng/ml

Instrument :  
 ECD\_D  
 ClientSampleId :



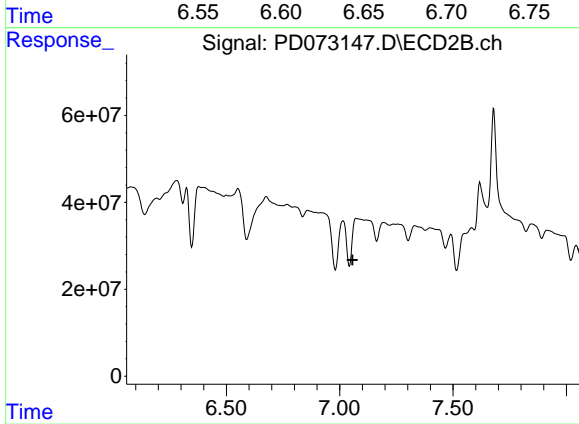
#24 Toxaphene-3

R.T.: 6.918 min  
 Delta R.T.: -0.049 min  
 Response: 199244124  
 Conc: 396.87 ng/ml



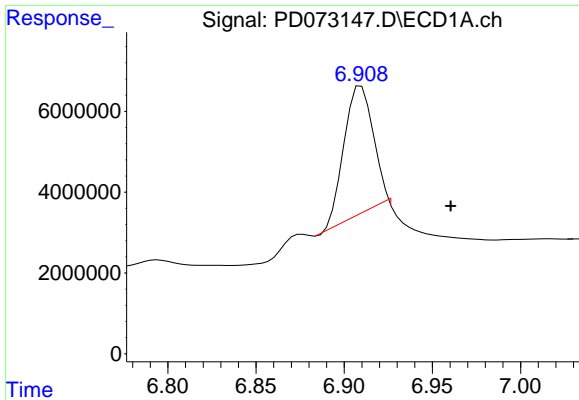
#25 Toxaphene-4

R.T.: 6.642 min  
 Delta R.T.: -0.007 min  
 Response: 1073777  
 Conc: 12.41 ng/ml



#25 Toxaphene-4

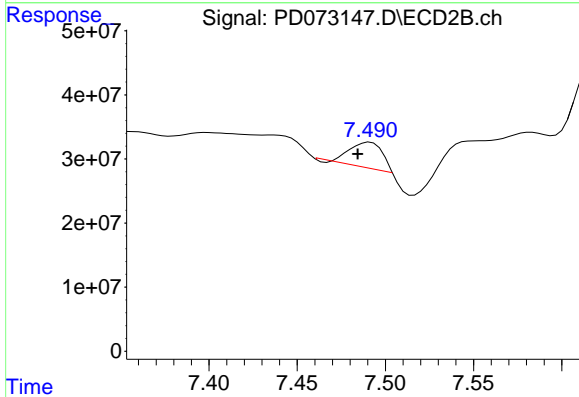
R.T.: 7.074 min  
 Delta R.T.: 0.017 min  
 Response: -114018374  
 Conc: N.D.



#26 Toxaphene-5

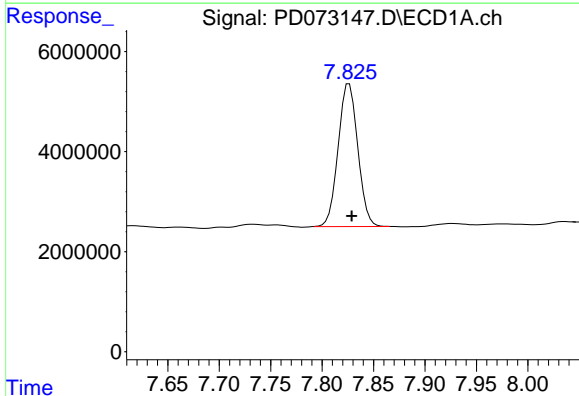
R.T.: 6.910 min  
 Delta R.T.: -0.051 min  
 Response: 36970047  
 Conc: 778.56 ng/ml

Instrument :  
 ECD\_D  
 ClientSampleId :



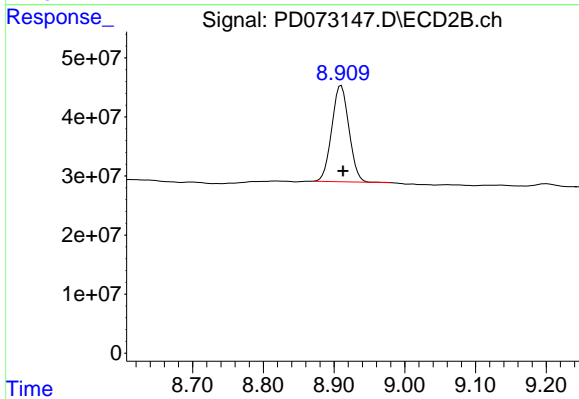
#26 Toxaphene-5

R.T.: 7.491 min  
 Delta R.T.: 0.007 min  
 Response: 46755298  
 Conc: 171.15 ng/ml



#27 Decachlorobiphenyl

R.T.: 7.826 min  
 Delta R.T.: -0.002 min  
 Response: 37884041  
 Conc: 16.60 ng/ml



#27 Decachlorobiphenyl

R.T.: 8.910 min  
 Delta R.T.: -0.003 min  
 Response: 274425083  
 Conc: 18.54 ng/ml