

Data Path : Z:\pestpcbsrv\HPCHEM1\ECD\_D\Data\PD112023\  
 Data File : PD079728.D  
 Signal(s) : Signal #1: ECD1A.ch Signal #2: ECD2B.ch  
 Acq On : 20 Nov 2023 17:18  
 Operator : AR\AJ  
 Sample : 05174-19  
 Misc :  
 ALS Vial : 36 Sample Multiplier: 1

Integration File signal 1: autoint1.e  
 Integration File signal 2: autoint2.e  
 Quant Time: Nov 20 20:25:55 2023  
 Quant Method : Z:\pestpcbsrv\HPCHEM1\ECD\_D\Method\PD110623CLP.M  
 Quant Title : GC Extractables  
 QLast Update : Sat Nov 04 07:14:58 2023  
 Response via : Initial Calibration  
 Integrator: ChemStation

Volume Inj. : 1 µl  
 Signal #1 Phase : ZB-MR1 Signal #2 Phase: ZB-MR2  
 Signal #1 Info : 30M x 0.32mm x0.5 Signal #2 Info : 30M x 0.32mm x 0.25µm

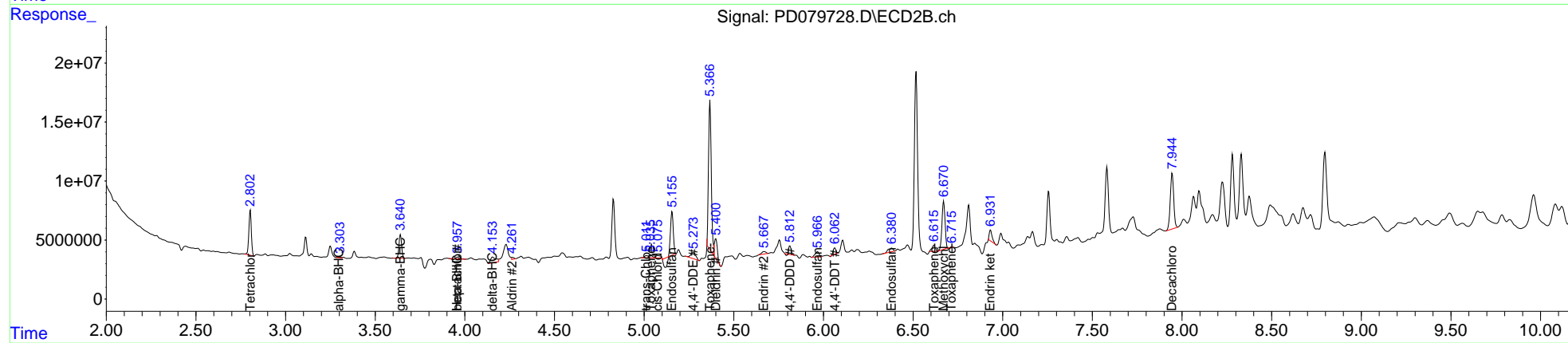
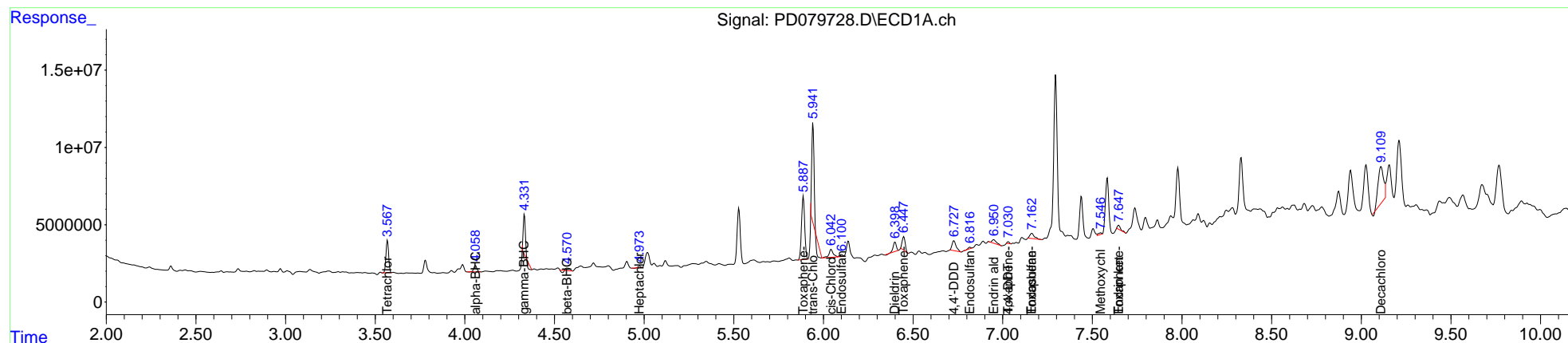
	Compound	RT#1	RT#2	Resp#1	Resp#2	ng/ml	ng/ml
-----							
System Monitoring Compounds							
1)	SA Tetrachlo...	3.569	2.804	21439372	37004478	14.681	16.178
27)	SA Decachlor...	9.110	7.946	49360483	62468983	27.816	26.165
Target Compounds							
2)	A alpha-BHC	4.060f	3.300	4953256	677754	1.999	0.187 #
3)	MA gamma-BHC...	4.332	3.641	18502946	20776889	7.832	6.048
4)	MA Heptachlor	4.975	3.959	699593	886324	0.279	0.266
5)	MB Aldrin	0.000	4.265	0	1451951	N.D.	0.446
6)	B beta-BHC	4.570	3.959f	1783999	886324	1.643	0.541 #
7)	B delta-BHC	0.000	4.155	0	9505946	N.D.	2.661
8)	B Heptachlo...	0.000	4.758	0	215225	N.D.	<MDL
9)	A Endosulfan I	6.101	5.156	1768755	31264234	0.856	11.278 #
10)	B trans-Chl...	5.942	5.012	46124333	2373344	21.678	0.799 #
11)	B cis-Chlor...	6.043	5.076	8649925	3974244	3.972	1.309 #
12)	B 4,4'-DDE	0.000	5.274	0	10264973	N.D.	3.666
13)	MA Dieldrin	6.399	5.400	7017117	19370249	3.190	6.083 #
14)	MA Endrin	0.000	5.669	0	3417862	N.D.	1.248
15)	B Endosulfa...	6.818	5.968	1043165	6799614	0.548	2.618 #
16)	A 4,4'-DDD	6.728	5.813	10177146	6296557	6.282	2.675 #
17)	MA 4,4'-DDT	7.031	6.063	981706	5565993	0.576	2.317 #
18)	B Endrin al...	6.950	6.159	4110825	-4859486	2.758	N.D. #
19)	B Endosulfa...	7.163	6.381	5954372	6248103	3.198	2.515
20)	A Methoxychlor	7.547	6.671	1484372	48796502	1.610	37.963 #
21)	B Endrin ke...	7.647	6.932f	3181728	10008663	1.628	3.520 #
22)	Toxaphene-1	5.888	5.036	50253341	3179325	7328.401	190.141 #
23)	Toxaphene-2	6.448	5.368	10165172	135.9E6	523.506	8086.905 #
24)	Toxaphene-3	7.031f	6.617	981706	6898009	17.481	119.789 #
25)	Toxaphene-4	7.163	6.716f	5954372	20355	142.037	0.259 #
26)	Toxaphene-5	7.647f	7.088	3181728	-2638588	101.093	N.D. #

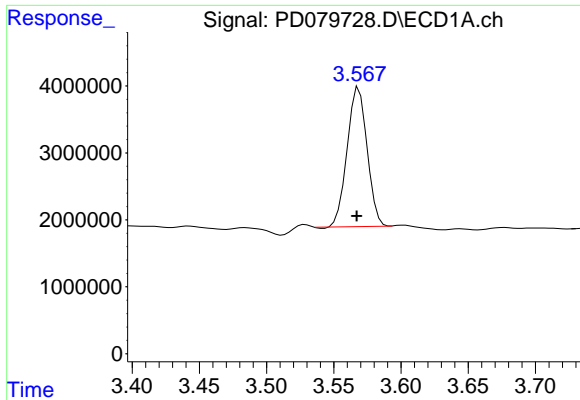
(f)=RT Delta > 1/2 Window (#)=Amounts differ by > 25% (m)=manual int.

Data Path : Z:\pestpcbsrv\HPCHEM1\ECD\_D\Data\PD112023\  
 Data File : PD079728.D  
 Signal(s) : Signal #1: ECD1A.ch Signal #2: ECD2B.ch  
 Acq On : 20 Nov 2023 17:18  
 Operator : AR\AJ  
 Sample : 05174-19  
 Misc :  
 ALS Vial : 36 Sample Multiplier: 1

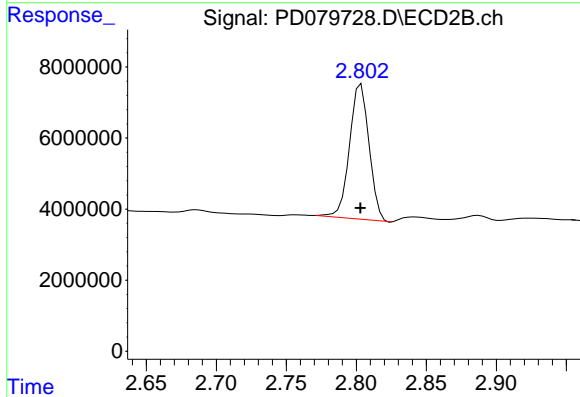
Integration File signal 1: autoint1.e  
 Integration File signal 2: autoint2.e  
 Quant Time: Nov 20 20:25:55 2023  
 Quant Method : Z:\pestpcbsrv\HPCHEM1\ECD\_D\Method\PD110623CLP.M  
 Quant Title : GC Extractables  
 QLast Update : Sat Nov 04 07:14:58 2023  
 Response via : Initial Calibration  
 Integrator: ChemStation

Volume Inj. : 1 µl  
 Signal #1 Phase : ZB-MR1 Signal #2 Phase: ZB-MR2  
 Signal #1 Info : 30M x 0.32mm x0.5 Signal #2 Info : 30M x 0.32mm x 0.25µm

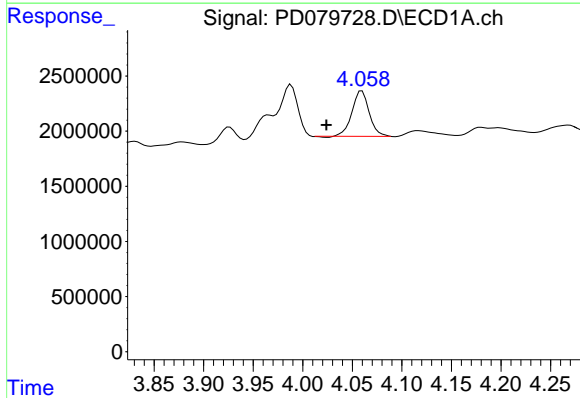




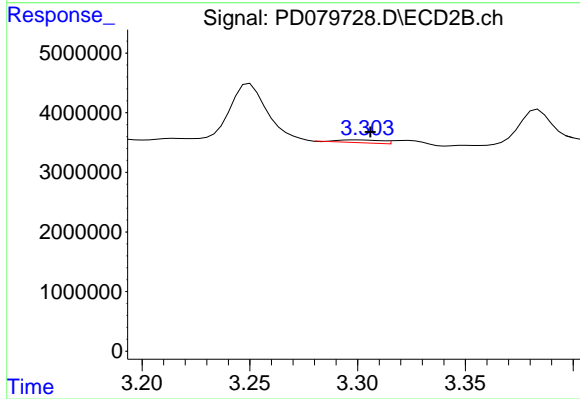
#1 Tetrachloro-m-xylene  
 R.T.: 3.569 min  
 Delta R.T.: 0.002 min  
 Response: 21439372  
 Conc: 14.68 ng/ml



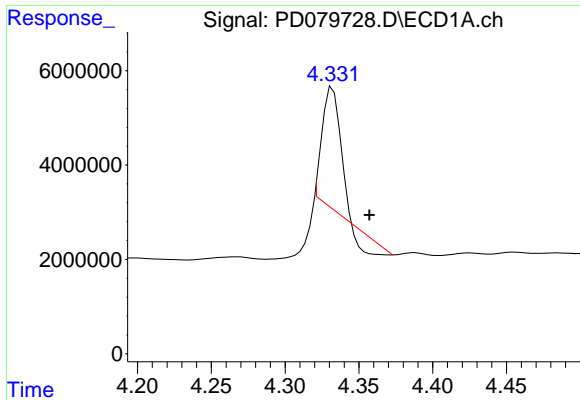
#1 Tetrachloro-m-xylene  
 R.T.: 2.804 min  
 Delta R.T.: 0.000 min  
 Response: 37004478  
 Conc: 16.18 ng/ml



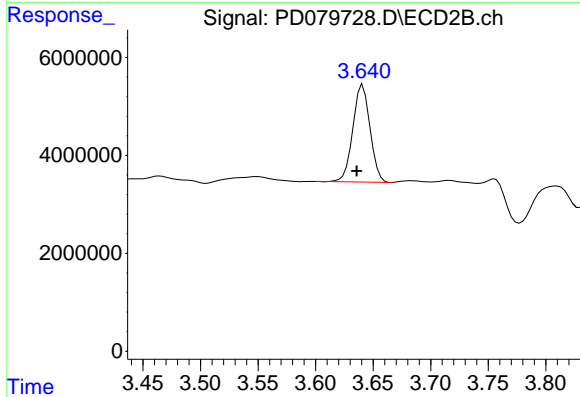
#2 alpha-BHC  
 R.T.: 4.060 min  
 Delta R.T.: 0.036 min  
 Response: 4953256  
 Conc: 2.00 ng/ml



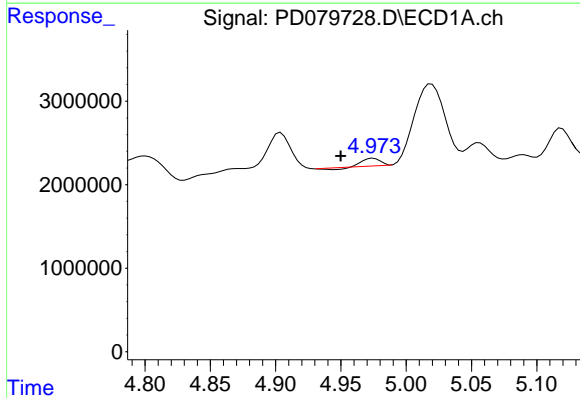
#2 alpha-BHC  
 R.T.: 3.300 min  
 Delta R.T.: -0.006 min  
 Response: 677754  
 Conc: 0.19 ng/ml



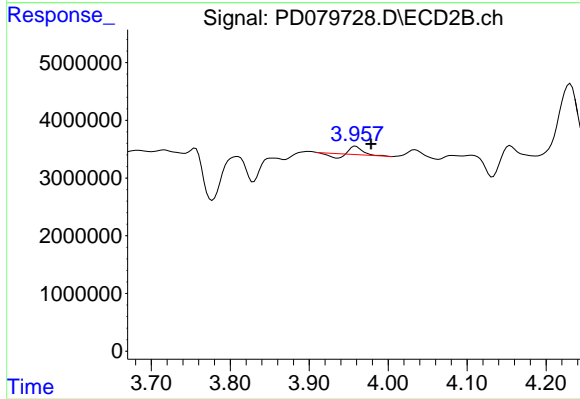
#3 gamma-BHC (Lindane)  
 R.T.: 4.332 min  
 Delta R.T.: -0.025 min  
 Response: 18502946  
 Conc: 7.83 ng/ml



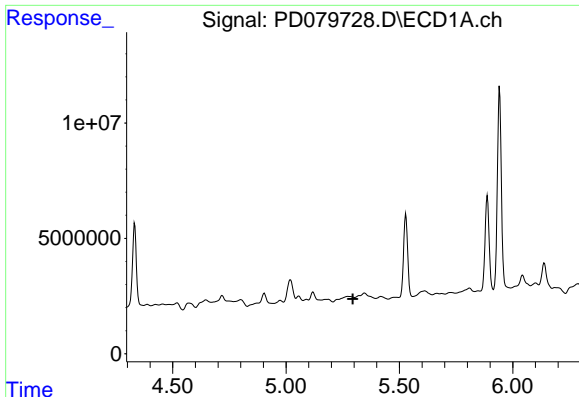
#3 gamma-BHC (Lindane)  
 R.T.: 3.641 min  
 Delta R.T.: 0.005 min  
 Response: 20776889  
 Conc: 6.05 ng/ml



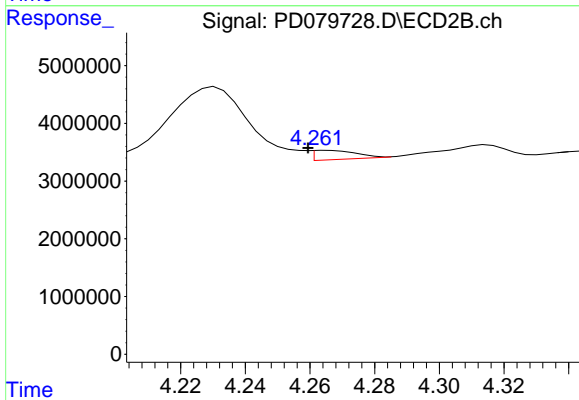
#4 Heptachlor  
 R.T.: 4.975 min  
 Delta R.T.: 0.025 min  
 Response: 699593  
 Conc: 0.28 ng/ml



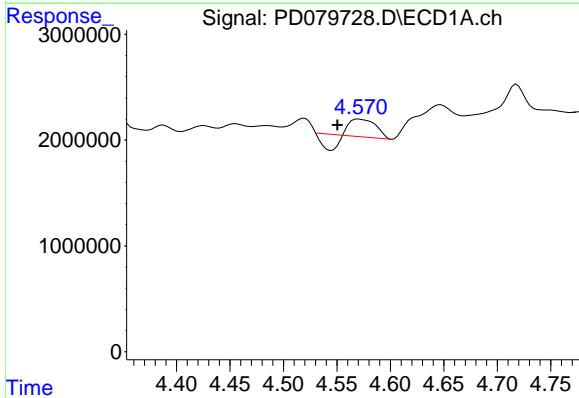
#4 Heptachlor  
 R.T.: 3.959 min  
 Delta R.T.: -0.020 min  
 Response: 886324  
 Conc: 0.27 ng/ml



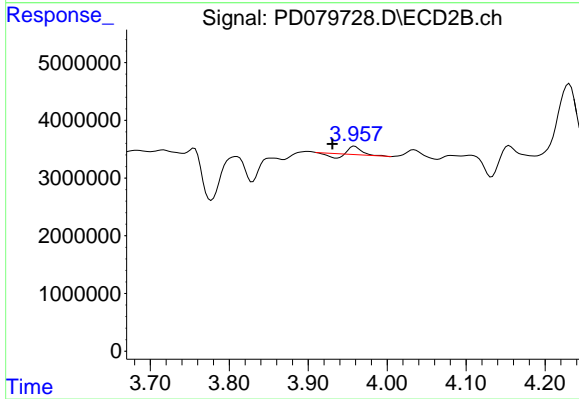
#5 Aldrin  
R.T.: 0.000 min  
Exp R.T. : 5.294 min  
Response: 0  
Conc: N.D.



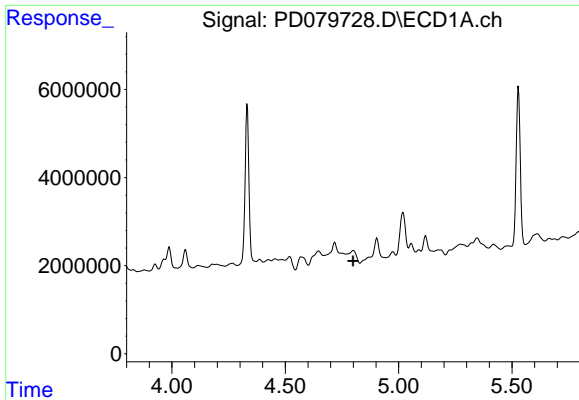
#5 Aldrin  
R.T.: 4.265 min  
Delta R.T.: 0.006 min  
Response: 1451951  
Conc: 0.45 ng/ml



#6 beta-BHC  
R.T.: 4.570 min  
Delta R.T.: 0.020 min  
Response: 1783999  
Conc: 1.64 ng/ml

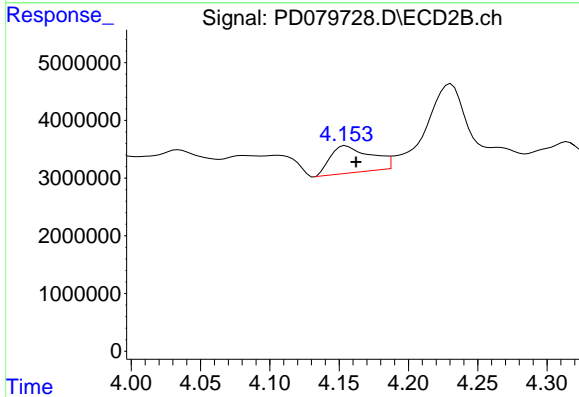


#6 beta-BHC  
R.T.: 3.959 min  
Delta R.T.: 0.028 min  
Response: 886324  
Conc: 0.54 ng/ml



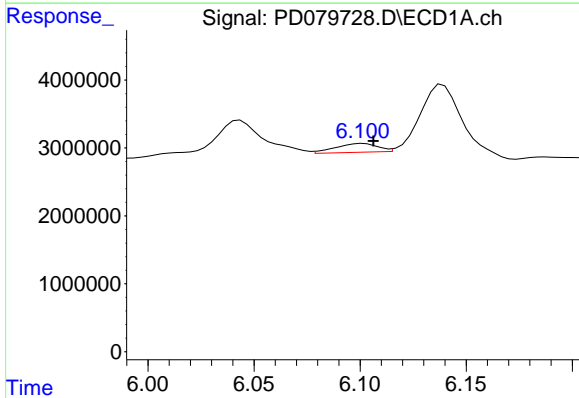
#7 delta-BHC

R.T.: 0.000 min  
 Exp R.T.: 4.800 min  
 Response: 0  
 Conc: N.D.



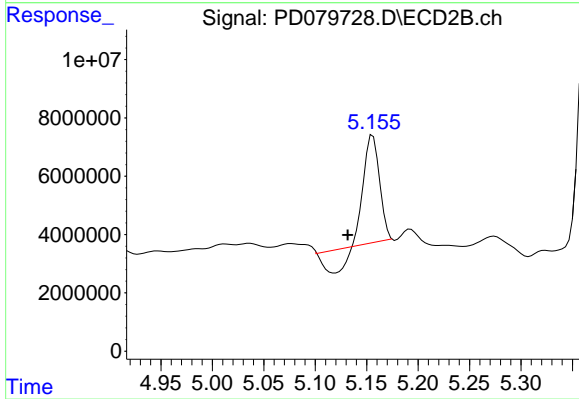
#7 delta-BHC

R.T.: 4.155 min  
 Delta R.T.: -0.007 min  
 Response: 9505946  
 Conc: 2.66 ng/ml



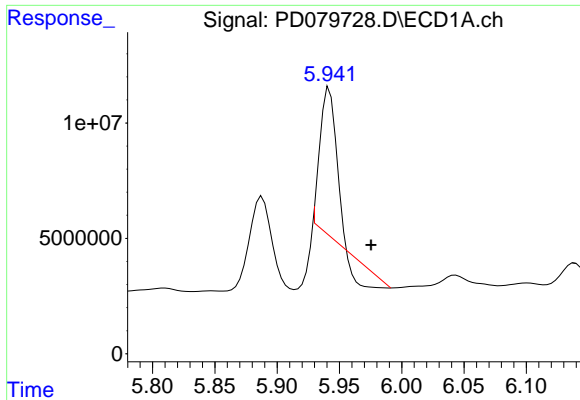
#9 Endosulfan I

R.T.: 6.101 min  
 Delta R.T.: -0.005 min  
 Response: 1768755  
 Conc: 0.86 ng/ml



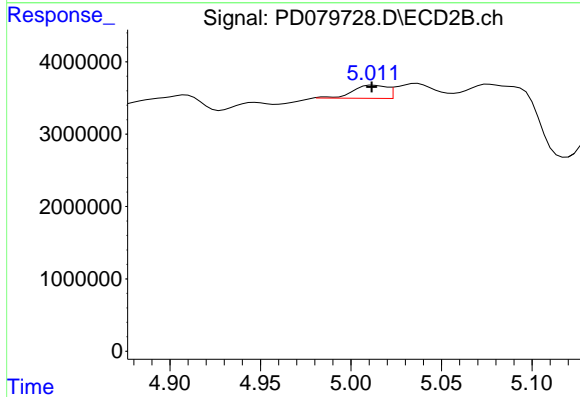
#9 Endosulfan I

R.T.: 5.156 min  
 Delta R.T.: 0.025 min  
 Response: 31264234  
 Conc: 11.28 ng/ml



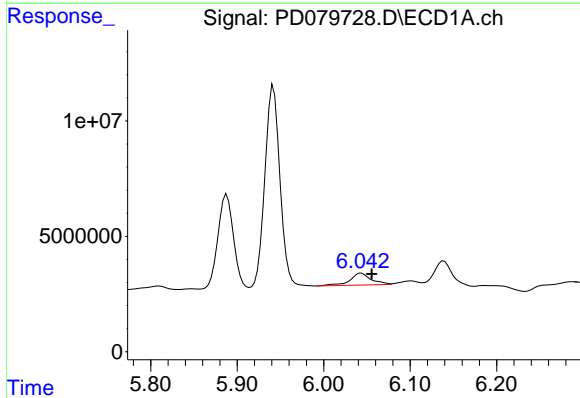
#10 trans-Chlordane

R.T.: 5.942 min  
Delta R.T.: -0.034 min  
Response: 46124333  
Conc: 21.68 ng/ml



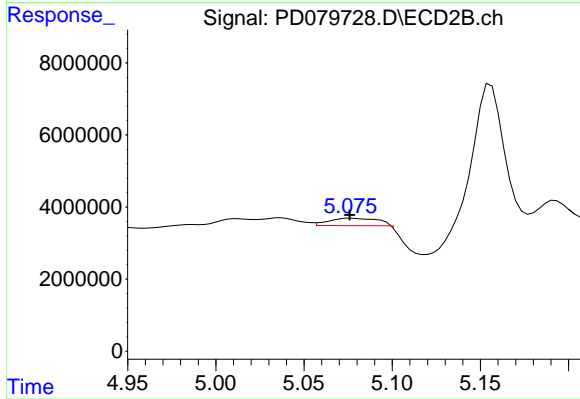
#10 trans-Chlordane

R.T.: 5.012 min  
Delta R.T.: 0.001 min  
Response: 2373344  
Conc: 0.80 ng/ml



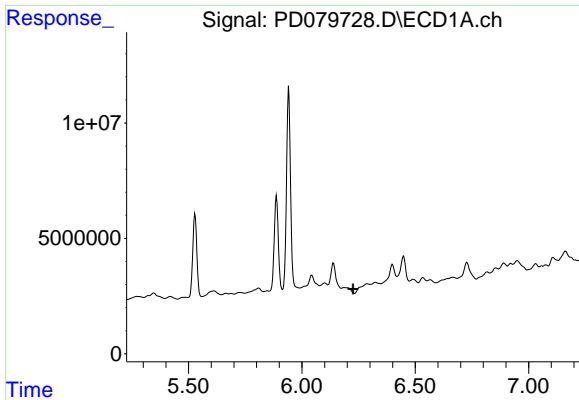
#11 cis-Chlordane

R.T.: 6.043 min  
Delta R.T.: -0.012 min  
Response: 8649925  
Conc: 3.97 ng/ml

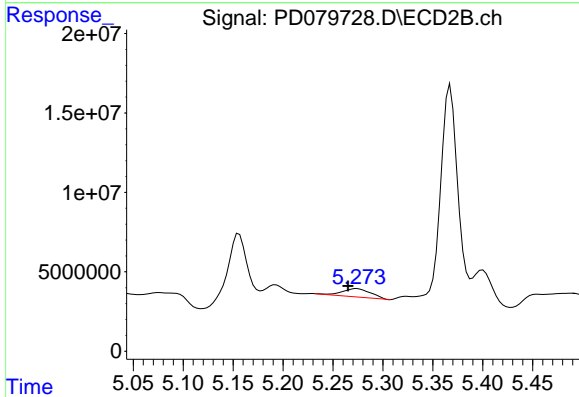


#11 cis-Chlordane

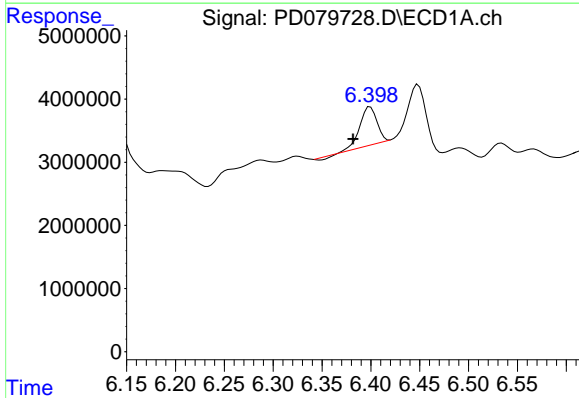
R.T.: 5.076 min  
Delta R.T.: 0.000 min  
Response: 3974244  
Conc: 1.31 ng/ml



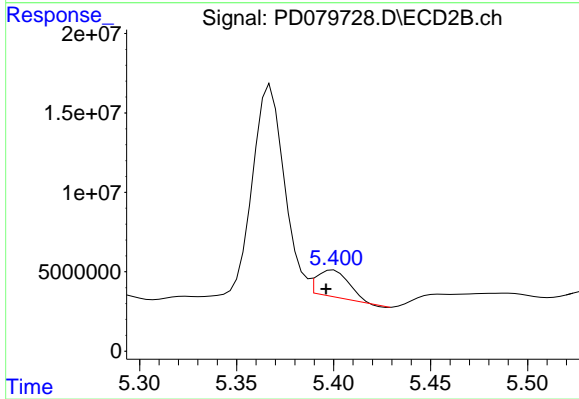
#12 4,4'-DDE  
 R.T.: 0.000 min  
 Exp R.T.: 6.226 min  
 Response: 0  
 Conc: N.D.



#12 4,4'-DDE  
 R.T.: 5.274 min  
 Delta R.T.: 0.009 min  
 Response: 10264973  
 Conc: 3.67 ng/ml

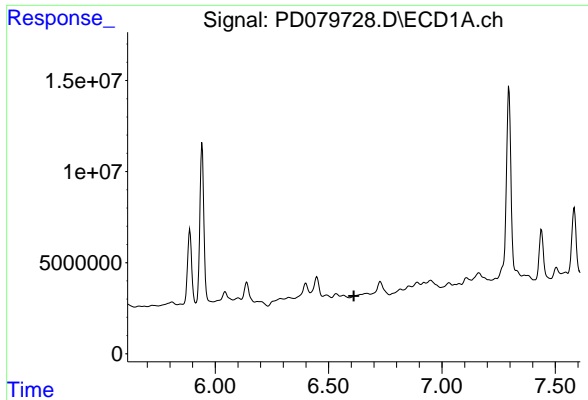


#13 Dieldrin  
 R.T.: 6.399 min  
 Delta R.T.: 0.018 min  
 Response: 7017117  
 Conc: 3.19 ng/ml

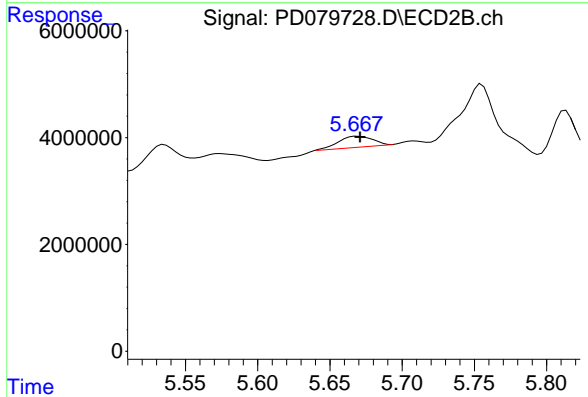


#13 Dieldrin  
 R.T.: 5.400 min  
 Delta R.T.: 0.004 min  
 Response: 19370249  
 Conc: 6.08 ng/ml

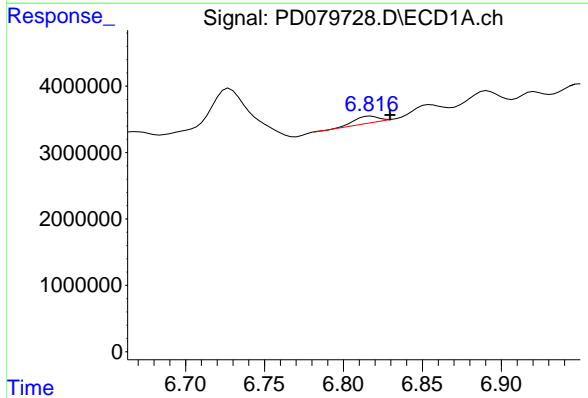




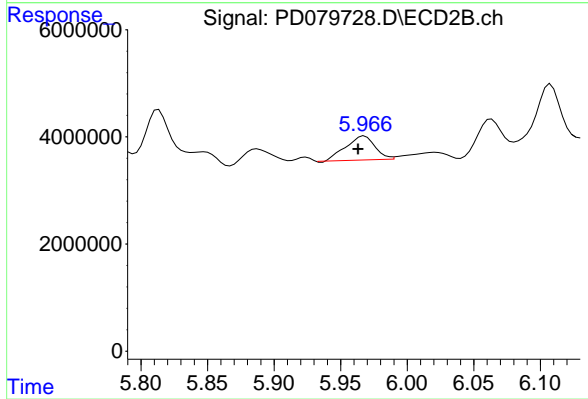
#14 Endrin  
 R.T.: 0.000 min  
 Exp R.T. : 6.612 min  
 Response: 0  
 Conc: N.D.



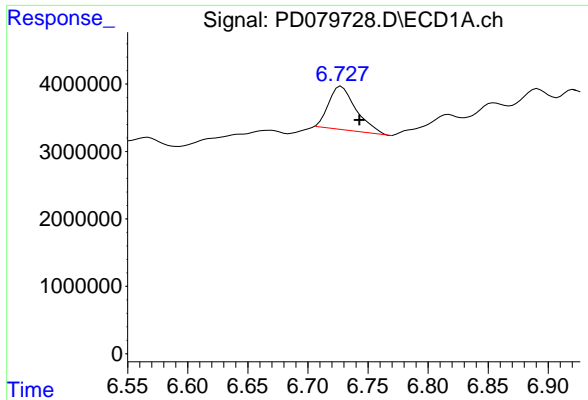
#14 Endrin  
 R.T.: 5.669 min  
 Delta R.T.: -0.002 min  
 Response: 3417862  
 Conc: 1.25 ng/ml



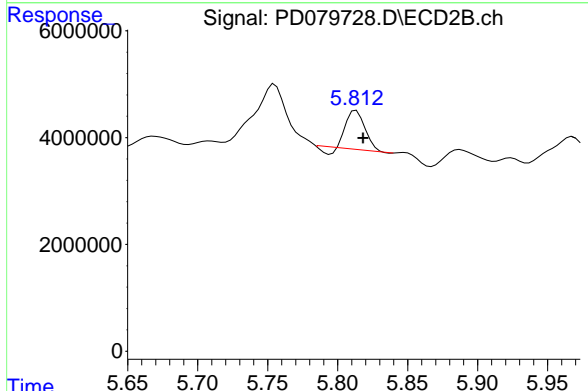
#15 Endosulfan II  
 R.T.: 6.818 min  
 Delta R.T.: -0.012 min  
 Response: 1043165  
 Conc: 0.55 ng/ml



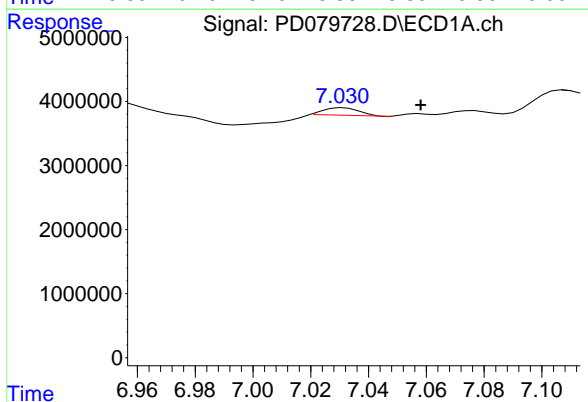
#15 Endosulfan II  
 R.T.: 5.968 min  
 Delta R.T.: 0.005 min  
 Response: 6799614  
 Conc: 2.62 ng/ml



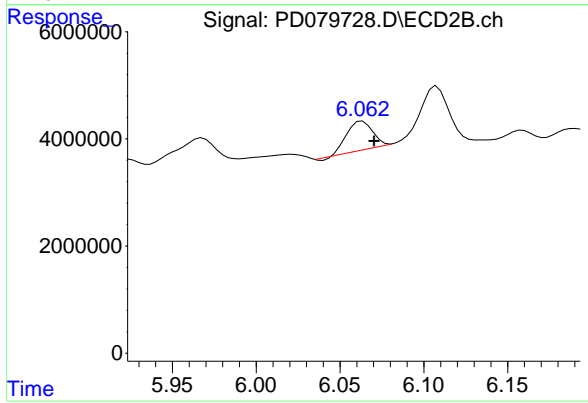
#16 4,4'-DDD  
 R.T.: 6.728 min  
 Delta R.T.: -0.015 min  
 Response: 10177146  
 Conc: 6.28 ng/ml



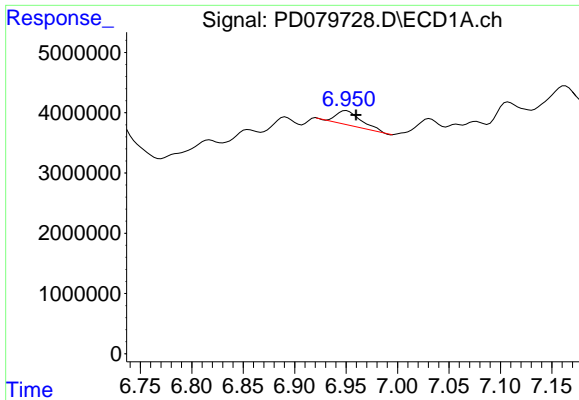
#16 4,4'-DDD  
 R.T.: 5.813 min  
 Delta R.T.: -0.005 min  
 Response: 6296557  
 Conc: 2.67 ng/ml



#17 4,4'-DDT  
 R.T.: 7.031 min  
 Delta R.T.: -0.027 min  
 Response: 981706  
 Conc: 0.58 ng/ml

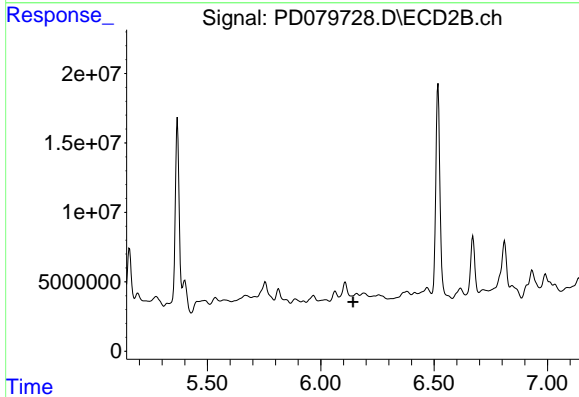


#17 4,4'-DDT  
 R.T.: 6.063 min  
 Delta R.T.: -0.007 min  
 Response: 5565993  
 Conc: 2.32 ng/ml



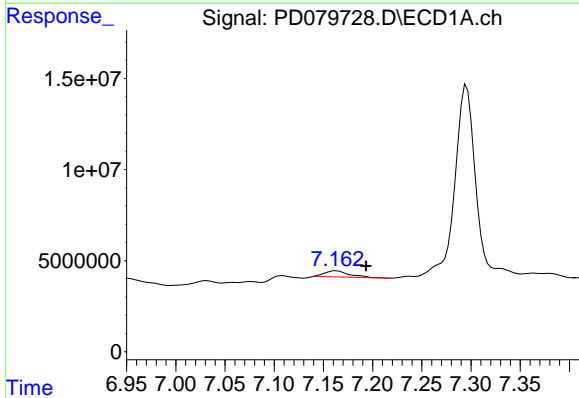
#18 Endrin aldehyde

R.T.: 6.950 min  
 Delta R.T.: -0.009 min  
 Response: 4110825  
 Conc: 2.76 ng/ml



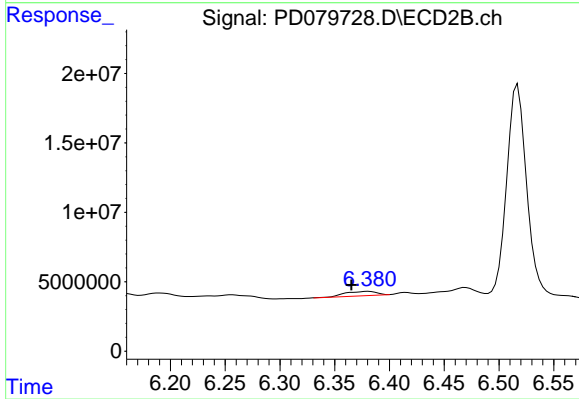
#18 Endrin aldehyde

R.T.: 6.159 min  
 Delta R.T.: 0.016 min  
 Response: -4859486  
 Conc: N.D.



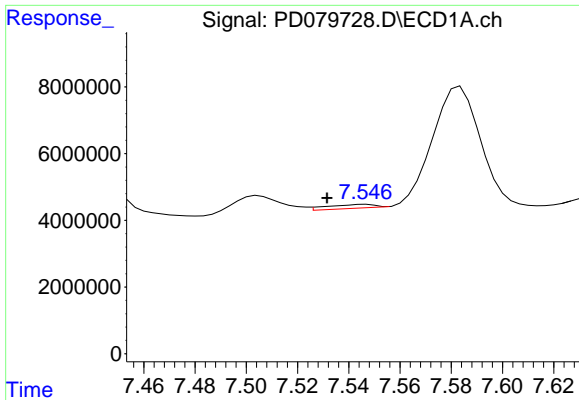
#19 Endosulfan Sulfate

R.T.: 7.163 min  
 Delta R.T.: -0.030 min  
 Response: 5954372  
 Conc: 3.20 ng/ml

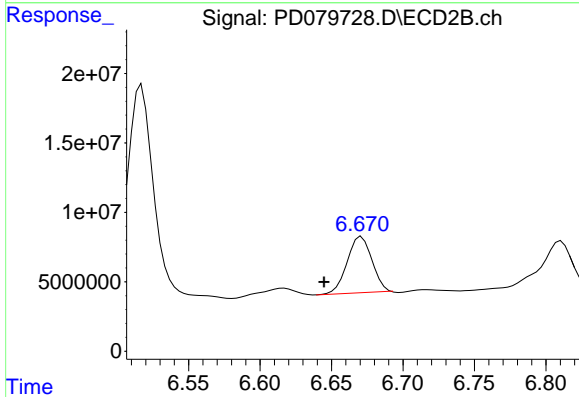


#19 Endosulfan Sulfate

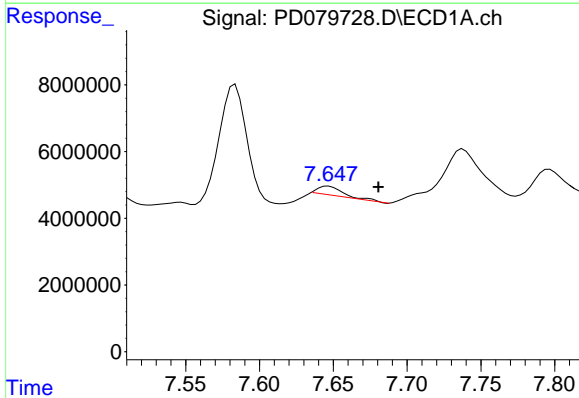
R.T.: 6.381 min  
 Delta R.T.: 0.016 min  
 Response: 6248103  
 Conc: 2.51 ng/ml



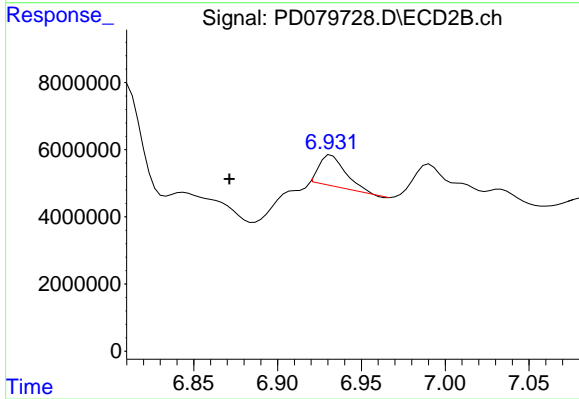
#20 Methoxychlor  
 R.T.: 7.547 min  
 Delta R.T.: 0.015 min  
 Response: 1484372  
 Conc: 1.61 ng/ml



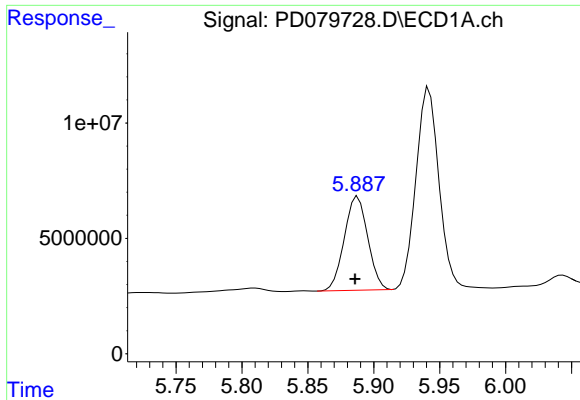
#20 Methoxychlor  
 R.T.: 6.671 min  
 Delta R.T.: 0.026 min  
 Response: 48796502  
 Conc: 37.96 ng/ml



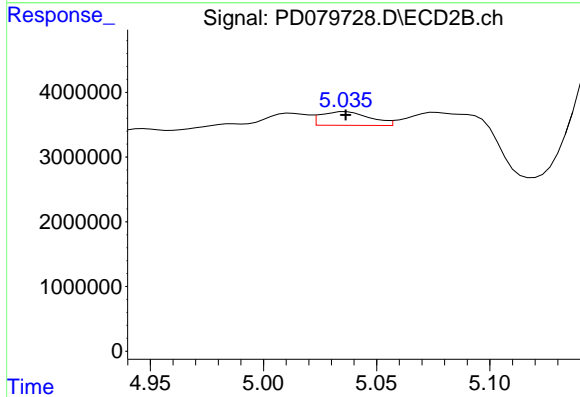
#21 Endrin ketone  
 R.T.: 7.647 min  
 Delta R.T.: -0.034 min  
 Response: 3181728  
 Conc: 1.63 ng/ml



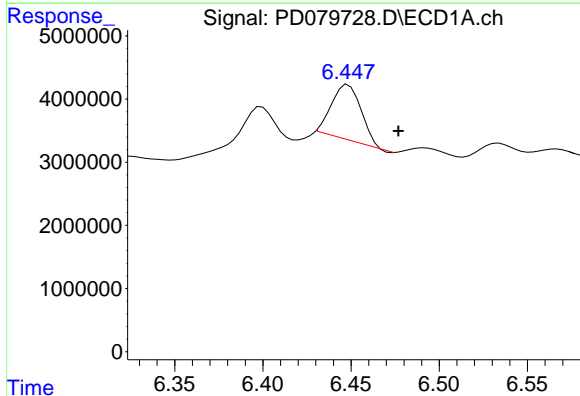
#21 Endrin ketone  
 R.T.: 6.932 min  
 Delta R.T.: 0.061 min  
 Response: 10008663  
 Conc: 3.52 ng/ml



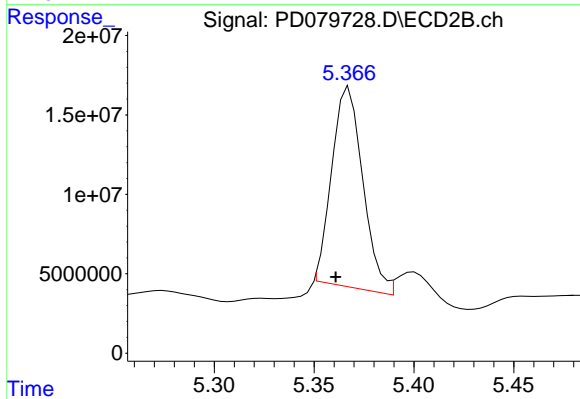
#22 Toxaphene-1  
 R.T.: 5.888 min  
 Delta R.T.: 0.002 min  
 Response: 50253341  
 Conc: 7328.40 ng/ml



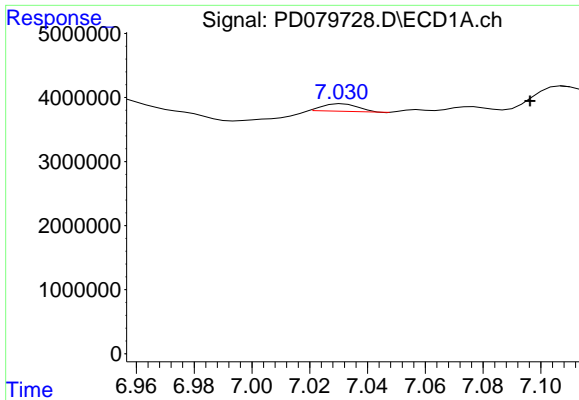
#22 Toxaphene-1  
 R.T.: 5.036 min  
 Delta R.T.: 0.000 min  
 Response: 3179325  
 Conc: 190.14 ng/ml



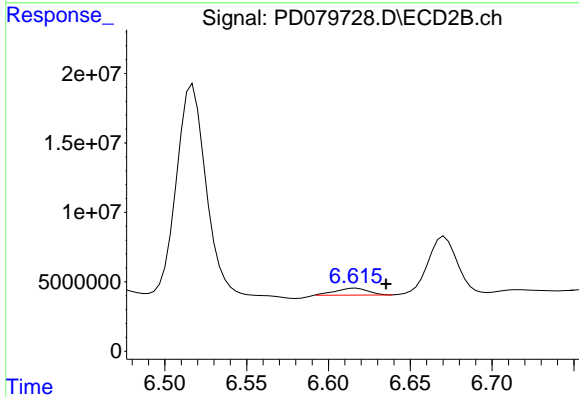
#23 Toxaphene-2  
 R.T.: 6.448 min  
 Delta R.T.: -0.029 min  
 Response: 10165172  
 Conc: 523.51 ng/ml



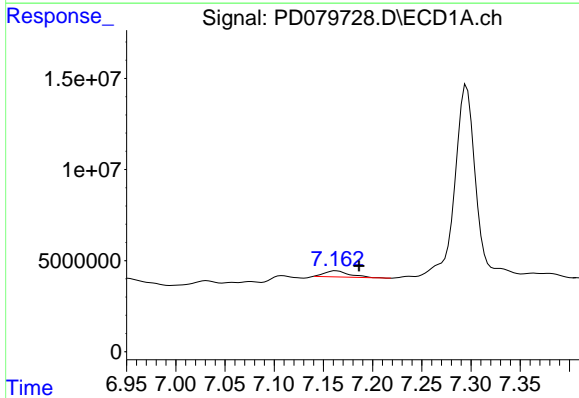
#23 Toxaphene-2  
 R.T.: 5.368 min  
 Delta R.T.: 0.007 min  
 Response: 135896366  
 Conc: 8086.90 ng/ml



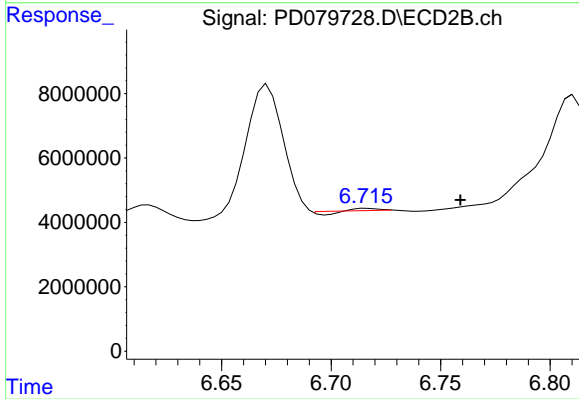
#24 Toxaphene-3  
 R.T.: 7.031 min  
 Delta R.T.: -0.065 min  
 Response: 981706  
 Conc: 17.48 ng/ml



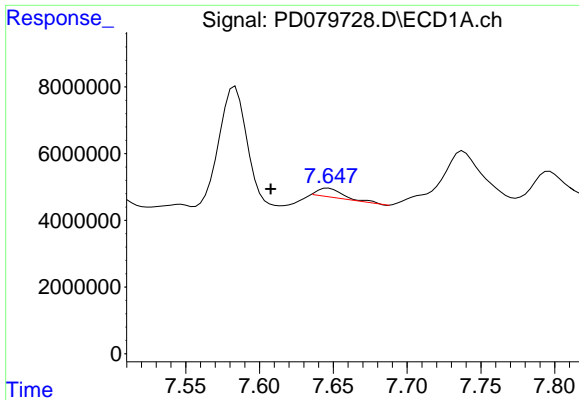
#24 Toxaphene-3  
 R.T.: 6.617 min  
 Delta R.T.: -0.019 min  
 Response: 6898009  
 Conc: 119.79 ng/ml



#25 Toxaphene-4  
 R.T.: 7.163 min  
 Delta R.T.: -0.023 min  
 Response: 5954372  
 Conc: 142.04 ng/ml

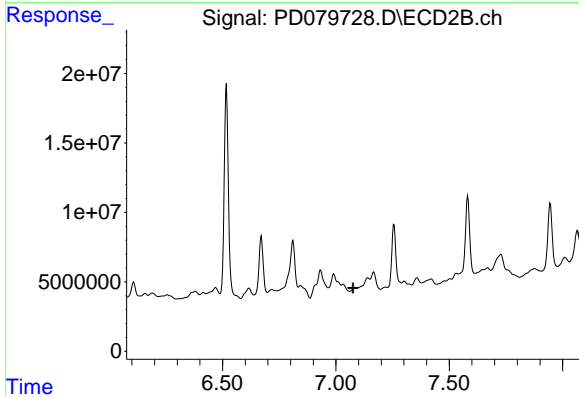


#25 Toxaphene-4  
 R.T.: 6.716 min  
 Delta R.T.: -0.043 min  
 Response: 20355  
 Conc: 0.26 ng/ml



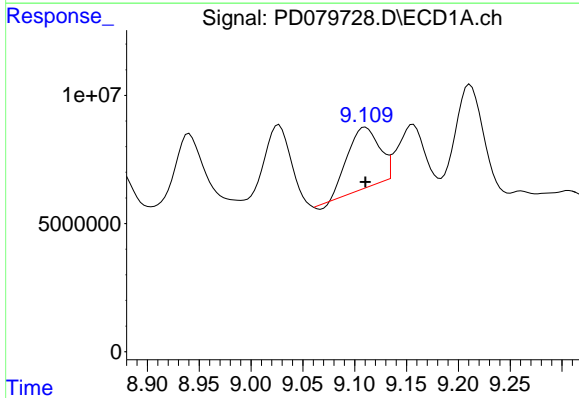
#26 Toxaphene-5

R.T.: 7.647 min  
 Delta R.T.: 0.039 min  
 Response: 3181728  
 Conc: 101.09 ng/ml



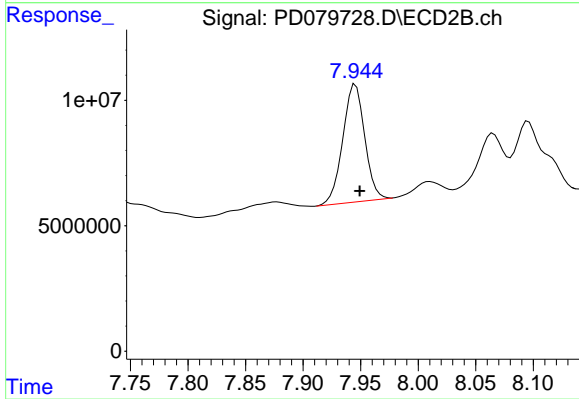
#26 Toxaphene-5

R.T.: 7.088 min  
 Delta R.T.: 0.012 min  
 Response: -2638588  
 Conc: N.D.



#27 Decachlorobiphenyl

R.T.: 9.110 min  
 Delta R.T.: 0.000 min  
 Response: 49360483  
 Conc: 27.82 ng/ml



#27 Decachlorobiphenyl

R.T.: 7.946 min  
 Delta R.T.: -0.004 min  
 Response: 62468983  
 Conc: 26.17 ng/ml