

Data Path : Z:\pestpcbsrv\HPCHEM1\ECD\_D\Data\PD112119\  
 Data File : PD056153.D  
 Signal(s) : Signal #1: ECD1A.ch Signal #2: ECD2B.ch  
 Acq On : 21 Nov 2019 11:27  
 Operator : SG\AJ  
 Sample : K5821-03  
 Misc :  
 ALS Vial : 8 Sample Multiplier: 1

**Instrument :**  
 ECD\_D  
**ClientSampled :**  
 C0B12

**Manual Integrations**  
**APPROVED**  
 Ankita  
 11/22/2019 1:14:54 PM

Integration File signal 1: autoint1.e  
 Integration File signal 2: autoint2.e  
 Quant Time: Nov 22 00:47:43 2019  
 Quant Method : Z:\pestpcbsrv\HPCHEM1\ECD\_D\Method\PD110319CLP.M  
 Quant Title : GC Extractables  
 QLast Update : Sat Nov 02 07:20:38 2019  
 Response via : Initial Calibration  
 Integrator: ChemStation

Volume Inj. : 1 µl  
 Signal #1 Phase : ZB-MR2 Signal #2 Phase: ZB-MR1  
 Signal #1 Info : 30M x 0.32mm x0.2 Signal #2 Info : 30M x 0.32mm x 0.50µm

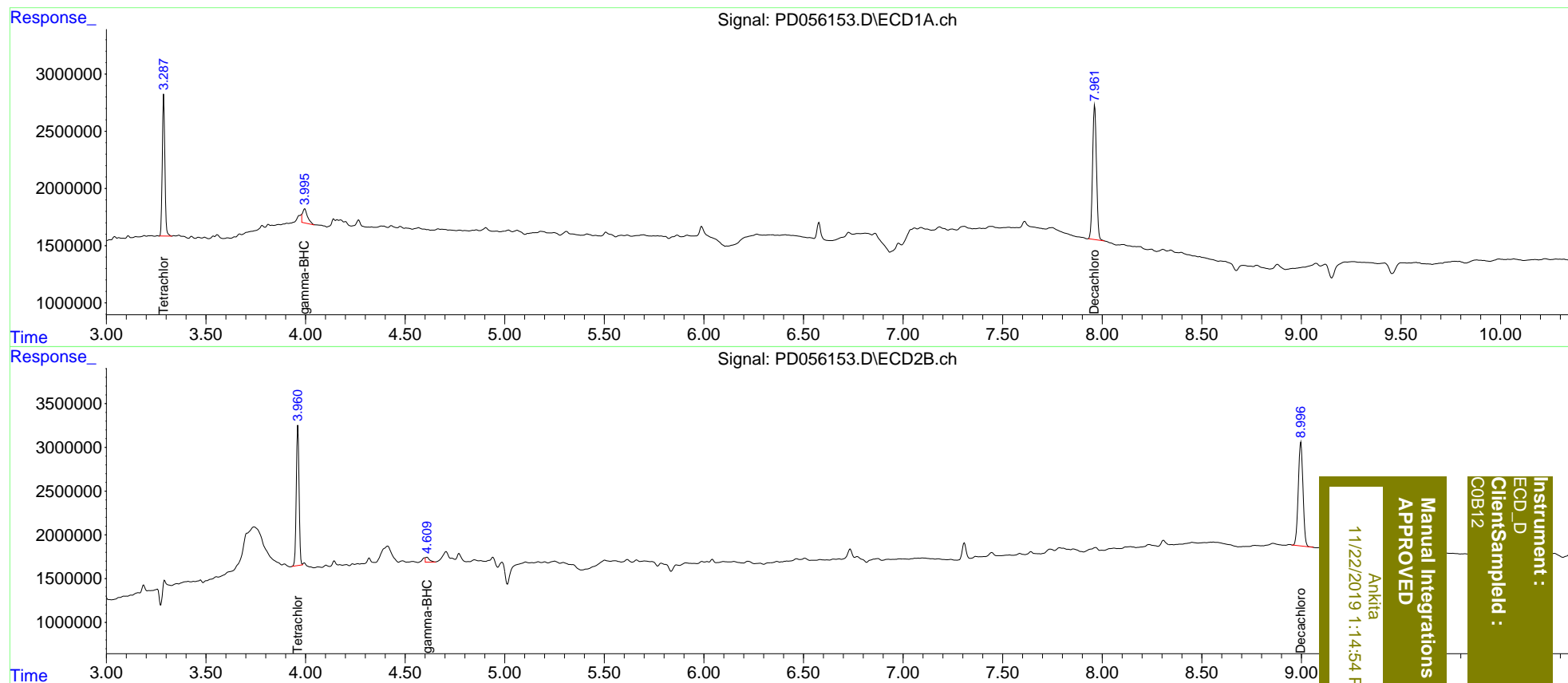
| Compound                    | RT#1  | RT#2  | Resp#1   | Resp#2   | ng/ml  | ng/ml   |
|-----------------------------|-------|-------|----------|----------|--------|---------|
| -----                       |       |       |          |          |        |         |
| System Monitoring Compounds |       |       |          |          |        |         |
| 1) SA Tetrachlo...          | 3.288 | 3.962 | 11053276 | 15496192 | 14.683 | 14.787  |
| 2) SA Decachlor...          | 7.962 | 8.997 | 16006972 | 19401905 | 19.638 | 17.086  |
| Target Compounds            |       |       |          |          |        |         |
| 3) MA gamma-BHC...          | 3.995 | 4.609 | 2148779  | 784959   | 2.101m | 0.557m# |
| -----                       |       |       |          |          |        |         |

(f)=RT Delta > 1/2 Window (#)=Amounts differ by > 25% (m)=manual int.

Data Path : Z:\pestpcbsrv\HPCHEM1\ECD\_D\Data\PD112119\  
 Data File : PD056153.D  
 Signal(s) : Signal #1: ECD1A.ch Signal #2: ECD2B.ch  
 Acq On : 21 Nov 2019 11:27  
 Operator : SG\AJ  
 Sample : K5821-03  
 Misc :  
 ALS Vial : 8 Sample Multiplier: 1

Integration File signal 1: autoint1.e  
 Integration File signal 2: autoint2.e  
 Quant Time: Nov 22 00:47:43 2019  
 Quant Method : Z:\pestpcbsrv\HPCHEM1\ECD\_D\Method\PD110319CLP.M  
 Quant Title : GC Extractables  
 QLast Update : Sat Nov 02 07:20:38 2019  
 Response via : Initial Calibration  
 Integrator: ChemStation

Volume Inj. : 1 µl  
 Signal #1 Phase : ZB-MR2 Signal #2 Phase: ZB-MR1  
 Signal #1 Info : 30M x 0.32mm x0.2 Signal #2 Info : 30M x 0.32mm x 0.50µm



Instrument : ECD\_D  
 ClientSampleId : COB12  
 Manual Integrations APPROVED  
 Ankitia  
 11/22/2019 1:14:54 PM