

Data Path : Z:\pestpcbsrv\HPCHEM1\ECD_D\Data\PD112119\
 Data File : PD056157.D
 Signal(s) : Signal #1: ECD1A.ch Signal #2: ECD2B.ch
 Acq On : 21 Nov 2019 13:22
 Operator : SG\AJ
 Sample : K5821-06MSD
 Misc :
 ALS Vial : 11 Sample Multiplier: 1

Instrument :
 ECD_D
 ClientSampleID :
 C0B13MSD

Manual Integrations
 APPROVED

Ankita
 11/22/2019 1:15:04 PM

Integration File signal 1: autoint1.e
 Integration File signal 2: autoint2.e
 Quant Time: Nov 22 00:48:56 2019
 Quant Method : Z:\pestpcbsrv\HPCHEM1\ECD_D\Method\PD110319CLP.M
 Quant Title : GC Extractables
 QLast Update : Sat Nov 02 07:20:38 2019
 Response via : Initial Calibration
 Integrator: ChemStation

Volume Inj. : 1 µl
 Signal #1 Phase : ZB-MR2 Signal #2 Phase: ZB-MR1
 Signal #1 Info : 30M x 0.32mm x0.2 Signal #2 Info : 30M x 0.32mm x 0.50µm

	Compound	RT#1	RT#2	Resp#1	Resp#2	ng/ml	ng/ml

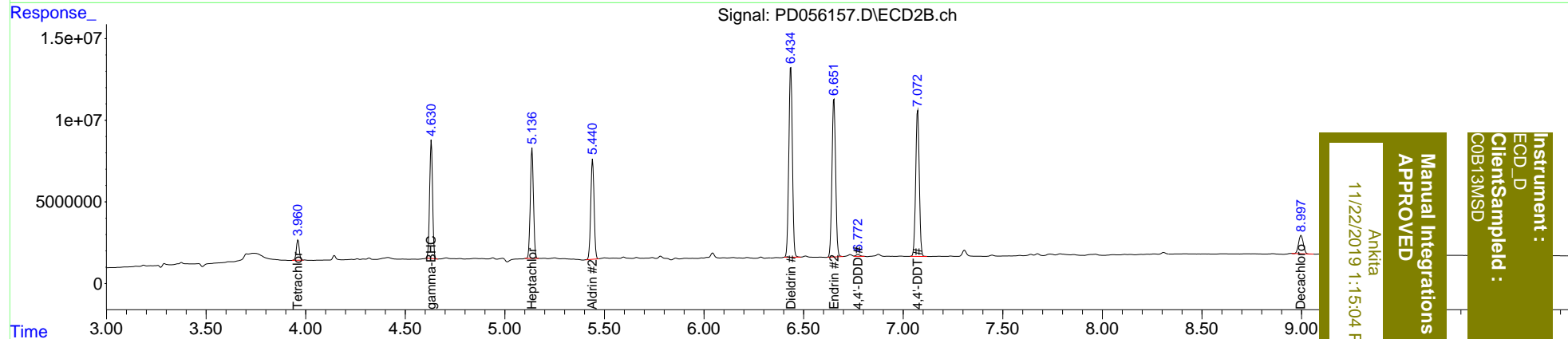
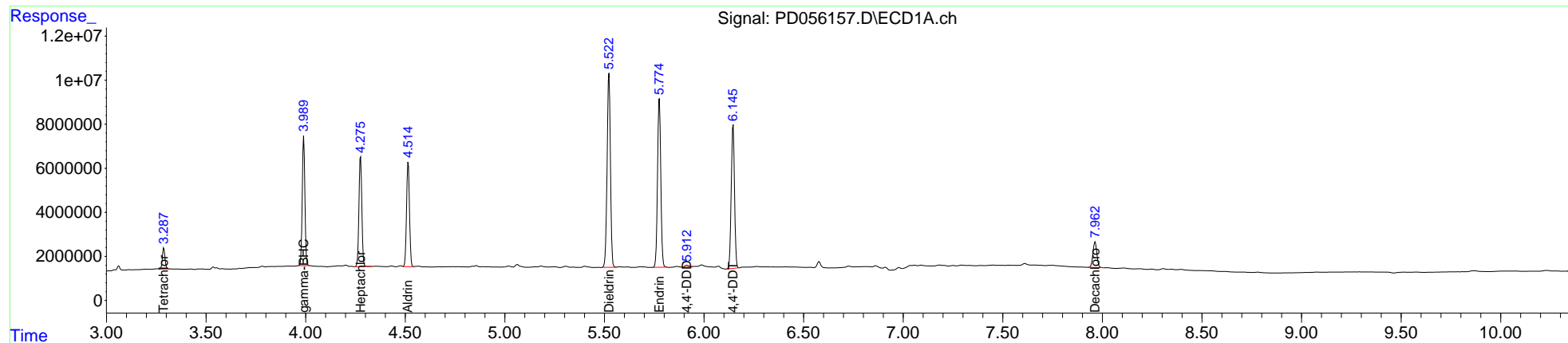
System Monitoring Compounds							
1)	SA Tetrachlo...	3.288	3.962	8639917	12690933	11.477	12.110
27)	SA Decachlor...	7.964	8.998	15765807	18337225	19.342	16.148
Target Compounds							
3)	MA gamma-BHC...	3.991	4.631	53533671	74597525	52.338	52.949
4)	MA Heptachlor	4.276	5.137	50839812	74620888	53.696	51.309
5)	MB Aldrin	4.515	5.441	48410849	71248911	52.253	51.926
13)	MA Dieldrin	5.523	6.436	100.9E6	144.6E6	107.298	102.316
14)	MA Endrin	5.776	6.653	87831304	124.3E6	109.484	107.993
16)	A 4,4'-DDD	5.912	6.772	1239704	1650909	1.755m	1.478m
17)	MA 4,4'-DDT	6.146	7.073	74951576	112.7E6	115.662	103.635

(f)=RT Delta > 1/2 Window (#)=Amounts differ by > 25% (m)=manual int.

Data Path : Z:\pestpcbsrv\HPCHEM1\ECD_D\Data\PD112119\
 Data File : PD056157.D
 Signal(s) : Signal #1: ECD1A.ch Signal #2: ECD2B.ch
 Acq On : 21 Nov 2019 13:22
 Operator : SG\AJ
 Sample : K5821-06MSD
 Misc :
 ALS Vial : 11 Sample Multiplier: 1

Integration File signal 1: autoint1.e
 Integration File signal 2: autoint2.e
 Quant Time: Nov 22 00:48:56 2019
 Quant Method : Z:\pestpcbsrv\HPCHEM1\ECD_D\Method\PD110319CLP.M
 Quant Title : GC Extractables
 QLast Update : Sat Nov 02 07:20:38 2019
 Response via : Initial Calibration
 Integrator: ChemStation

Volume Inj. : 1 µl
 Signal #1 Phase : ZB-MR2 Signal #2 Phase: ZB-MR1
 Signal #1 Info : 30M x 0.32mm x0.2 Signal #2 Info : 30M x 0.32mm x 0.50µm



Instrument : ECD_D
 Client Sample Id : C0B13MSD
 Manual Integrations APPROVED
 Ankitia
 11/22/2019 1:15:04 PM