

Data Path : Z:\pestpcbsrv\HPCHEM1\ECD_D\Data\PD112120\
 Data File : PD060218.D
 Signal(s) : Signal #1: ECD1A.ch Signal #2: ECD2B.ch
 Acq On : 21 Nov 2020 15:23
 Operator : DD\AJ
 Sample : INDB320
 Misc :
 ALS Vial : 31 Sample Multiplier: 1

Instrument :
 ECD_D
ClientSampled :
 INDB320

Manual Integrations
APPROVED
 mohammad
 11/23/2020 1:51:36 PM

Integration File signal 1: autoint1.e
 Integration File signal 2: autoint2.e
 Quant Time: Nov 23 00:40:08 2020
 Quant Method : Z:\pestpcbsrv\HPCHEM1\ECD_D\Method\PD110320CLP.M
 Quant Title : GC Extractables
 QLast Update : Wed Nov 04 04:05:33 2020
 Response via : Initial Calibration
 Integrator: ChemStation

Volume Inj. : 1 µl
 Signal #1 Phase : ZB-MR2 Signal #2 Phase: ZB-MR1
 Signal #1 Info : 30M x 0.32mm x0.2 Signal #2 Info : 30M x 0.32mm x 0.50µm

Compound	RT#1	RT#2	Resp#1	Resp#2	ng/ml	ng/ml

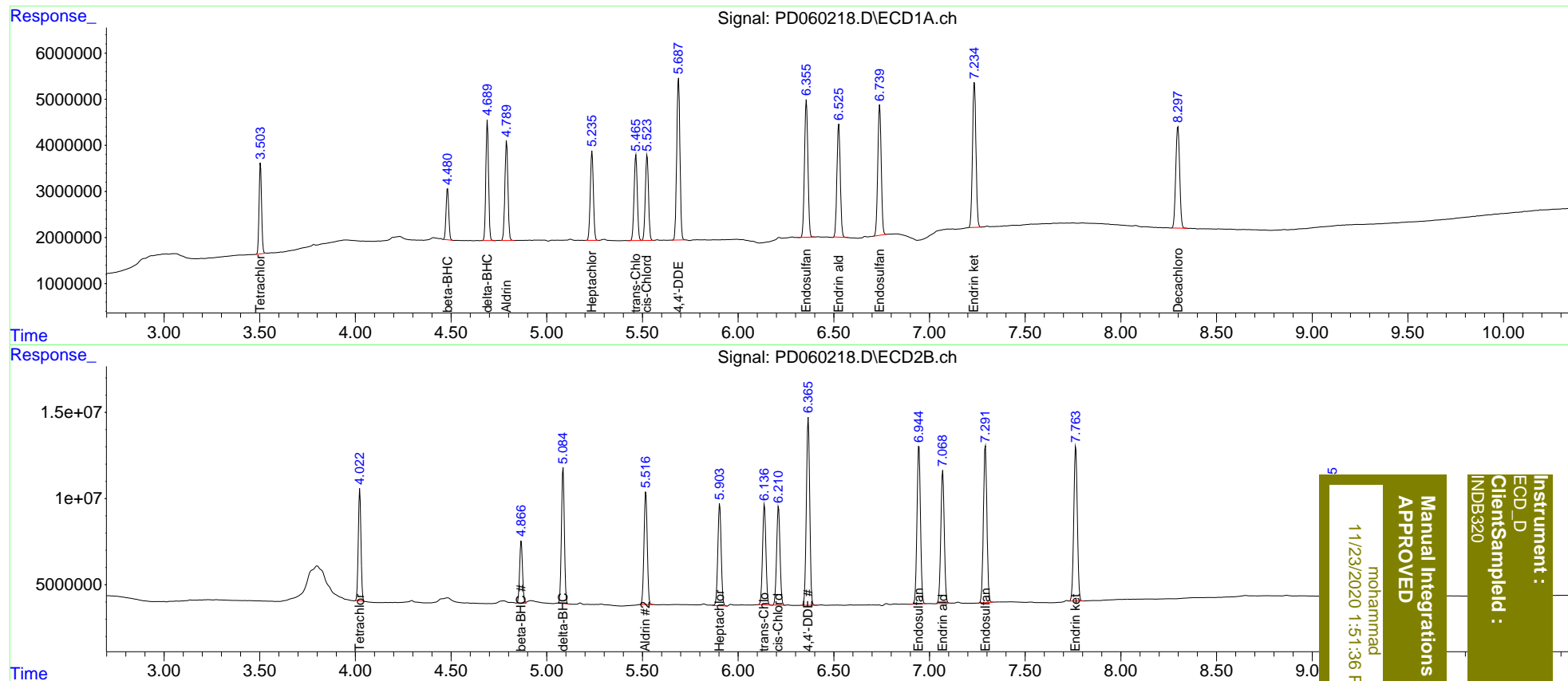
System Monitoring Compounds						
1) SA Tetrachlo...	3.504	4.023	17795177	63037414	20.765	21.147
27) SA Decachlor...	8.299	9.106	31315314	94416783	37.689	38.380
Target Compounds						
5) MB Aldrin	4.790	5.518	23861497	77272386	20.784	20.827
6) B beta-BHC	4.482	4.867	10949780	37747307	20.664	20.313
7) B delta-BHC	4.690	5.086	25868804	82776640	20.585	22.592
8) B Heptachlo...	5.237	5.904	21671172	72465720	20.516	22.001
10) B trans-Chl...	5.466	6.138	21777596	70642104	20.504	20.561
11) B cis-Chlor...	5.524	6.211	21576287	70446106	20.396	20.518
12) B 4,4'-DDE	5.687	6.367	41357180	133.3E6	40.465m	41.216
15) B Endosulfa...	6.357	6.945	36883481	115.7E6	40.901	40.929
18) B Endrin al...	6.526	7.069	29973797	96772799	40.263	40.222
19) B Endosulfa...	6.740	7.292	35158232	116.0E6	40.231	40.221
21) B Endrin ke...	7.235	7.765	39857009	116.1E6	40.068	39.821

(f)=RT Delta > 1/2 Window (#)=Amounts differ by > 25% (m)=manual int.

Data Path : Z:\pestpcbsrv\HPCHEM1\ECD_D\Data\PD112120\
 Data File : PD060218.D
 Signal(s) : Signal #1: ECD1A.ch Signal #2: ECD2B.ch
 Acq On : 21 Nov 2020 15:23
 Operator : DD\AJ
 Sample : INDB320
 Misc :
 ALS Vial : 31 Sample Multiplier: 1

Integration File signal 1: autoint1.e
 Integration File signal 2: autoint2.e
 Quant Time: Nov 23 00:40:08 2020
 Quant Method : Z:\pestpcbsrv\HPCHEM1\ECD_D\Method\PD110320CLP.M
 Quant Title : GC Extractables
 QLast Update : Wed Nov 04 04:05:33 2020
 Response via : Initial Calibration
 Integrator: ChemStation

Volume Inj. : 1 µl
 Signal #1 Phase : ZB-MR2 Signal #2 Phase: ZB-MR1
 Signal #1 Info : 30M x 0.32mm x0.2 Signal #2 Info : 30M x 0.32mm x 0.50µm



Instrument :
 ECD_D
 ClientSampleId :
 INDB320

Manual Integrations
 APPROVED
 mohammad
 11/23/2020 1:51:36 PM