

Data Path : Z:\pestpcbsrv\HPCHEM1\ECD\_D\Data\PD112123\  
 Data File : PD079775.D  
 Signal(s) : Signal #1: ECD1A.ch Signal #2: ECD2B.ch  
 Acq On : 21 Nov 2023 19:28  
 Operator : AR\AJ  
 Sample : 05439-16  
 Misc :  
 ALS Vial : 27 Sample Multiplier: 1

Instrument :  
 ECD\_D  
 ClientSampleId :

Integration File signal 1: autoint1.e  
 Integration File signal 2: autoint2.e  
 Quant Time: Nov 22 01:13:30 2023  
 Quant Method : Z:\pestpcbsrv\HPCHEM1\ECD\_D\Method\PD110623CLP.M  
 Quant Title : GC Extractables  
 QLast Update : Sat Nov 04 07:14:58 2023  
 Response via : Initial Calibration  
 Integrator: ChemStation

Volume Inj. : 1 µl  
 Signal #1 Phase : ZB-MR1 Signal #2 Phase: ZB-MR2  
 Signal #1 Info : 30M x 0.32mm x0.5 Signal #2 Info : 30M x 0.32mm x 0.25µm

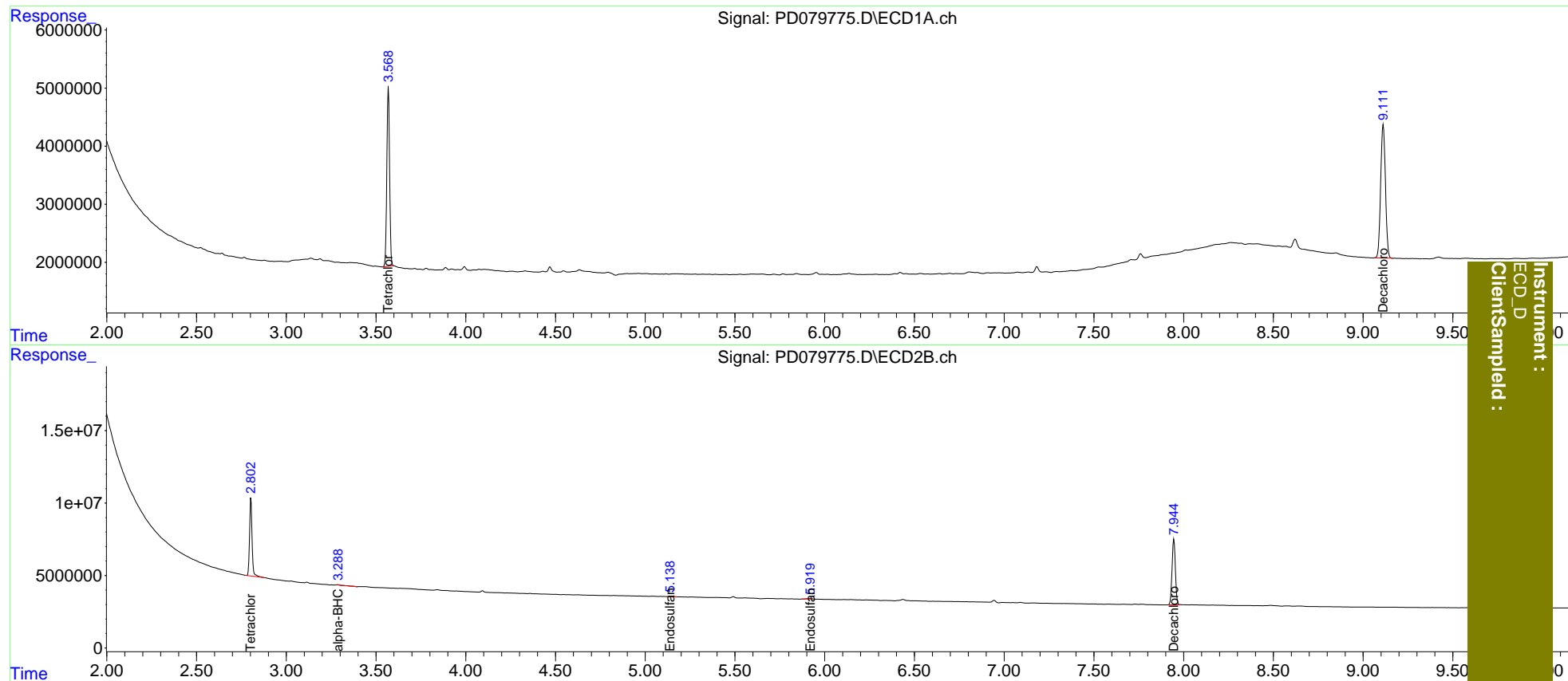
	Compound	RT#1	RT#2	Resp#1	Resp#2	ng/ml	ng/ml
-----							
System Monitoring Compounds							
1)	SA Tetrachlo...	3.569	2.803	32734924	52274117	22.415	22.854
27)	SA Decachlor...	9.112	7.946	42509074	57844080	23.955	24.228
Target Compounds							
2)	A alpha-BHC	0.000	3.288	0	430874	N.D.	0.119
9)	A Endosulfan I	0.000	5.140	0	289074	N.D.	0.104
11)	B cis-Chlor...	0.000	5.140f	0	289074	N.D.	<MDL
14)	MA Endrin	0.000	5.681	0	157121	N.D.	<MDL
15)	B Endosulfa...	0.000	5.921f	0	361554	N.D.	0.139
-----							

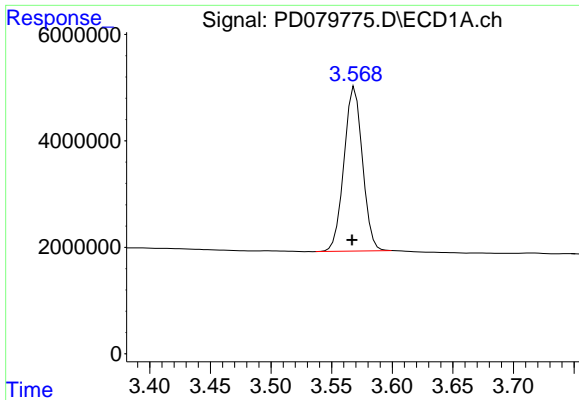
(f)=RT Delta > 1/2 Window (#)=Amounts differ by > 25% (m)=manual int.

Data Path : Z:\pestpcbsrv\HPCHEM1\ECD\_D\Data\PD112123\  
 Data File : PD079775.D  
 Signal(s) : Signal #1: ECD1A.ch Signal #2: ECD2B.ch  
 Acq On : 21 Nov 2023 19:28  
 Operator : AR\AJ  
 Sample : 05439-16  
 Misc :  
 ALS Vial : 27 Sample Multiplier: 1

Integration File signal 1: autoint1.e  
 Integration File signal 2: autoint2.e  
 Quant Time: Nov 22 01:13:30 2023  
 Quant Method : Z:\pestpcbsrv\HPCHEM1\ECD\_D\Method\PD110623CLP.M  
 Quant Title : GC Extractables  
 QLast Update : Sat Nov 04 07:14:58 2023  
 Response via : Initial Calibration  
 Integrator: ChemStation

Volume Inj. : 1 µl  
 Signal #1 Phase : ZB-MR1 Signal #2 Phase: ZB-MR2  
 Signal #1 Info : 30M x 0.32mm x0.5 Signal #2 Info : 30M x 0.32mm x 0.25µm

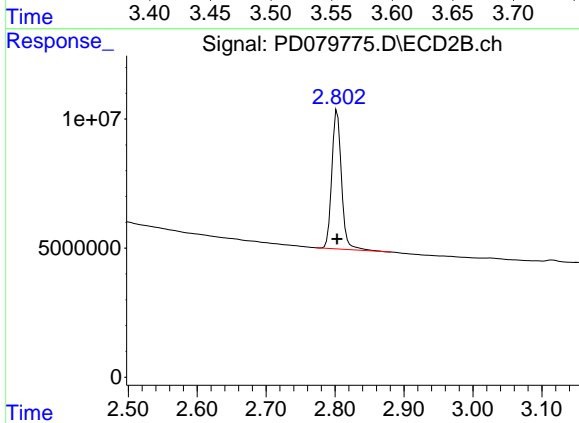




#1 Tetrachloro-m-xylene

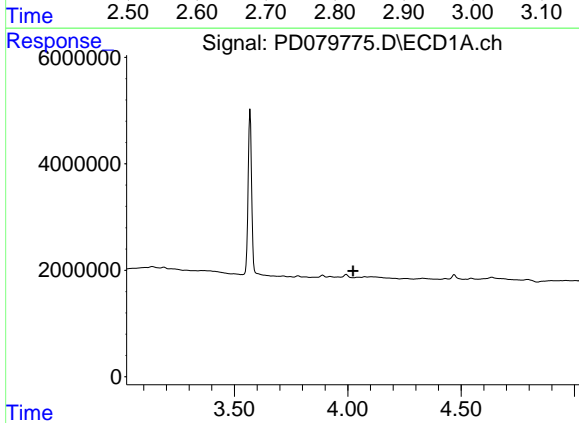
R.T.: 3.569 min  
 Delta R.T.: 0.002 min  
 Response: 32734924  
 Conc: 22.42 ng/ml

Instrument :  
 ECD\_D  
 ClientSampleId :



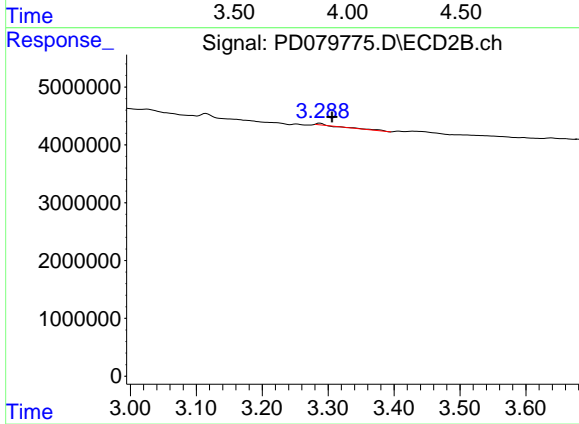
#1 Tetrachloro-m-xylene

R.T.: 2.803 min  
 Delta R.T.: 0.000 min  
 Response: 52274117  
 Conc: 22.85 ng/ml



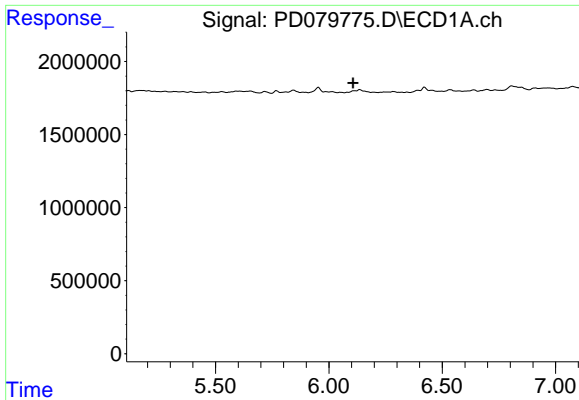
#2 alpha-BHC

R.T.: 0.000 min  
 Exp R.T. : 4.024 min  
 Response: 0  
 Conc: N.D.



#2 alpha-BHC

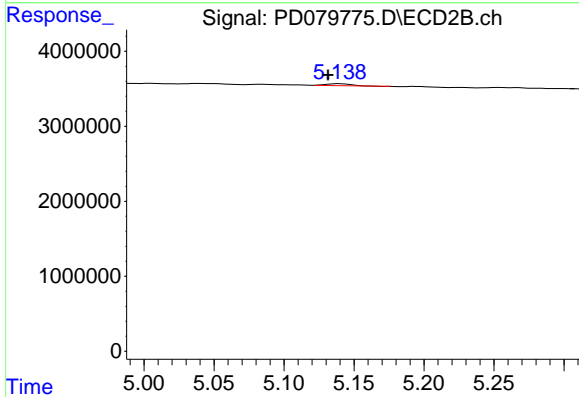
R.T.: 3.288 min  
 Delta R.T.: -0.018 min  
 Response: 430874  
 Conc: 0.12 ng/ml



#9 Endosulfan I

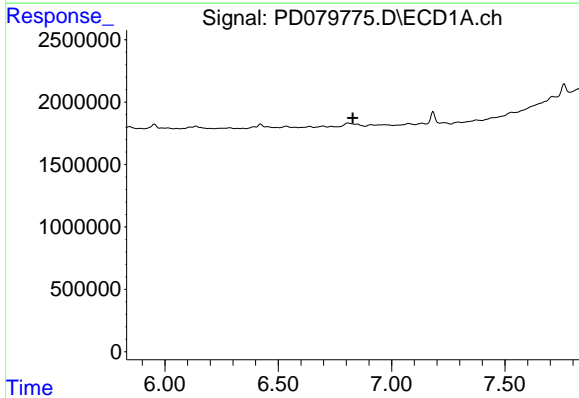
R.T.: 0.000 min  
 Exp R.T.: 6.106 min  
 Response: 0  
 Conc: N.D.

Instrument :  
 ECD\_D  
 ClientSampleId :



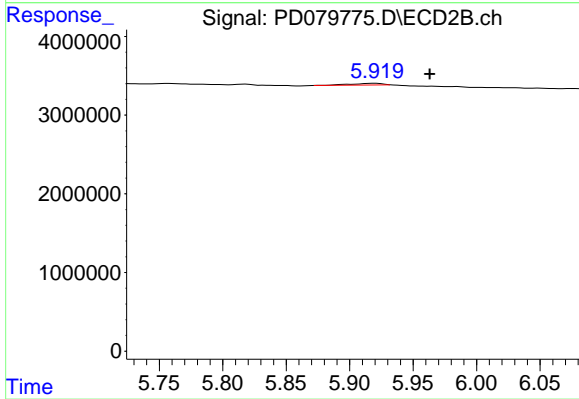
#9 Endosulfan I

R.T.: 5.140 min  
 Delta R.T.: 0.008 min  
 Response: 289074  
 Conc: 0.10 ng/ml



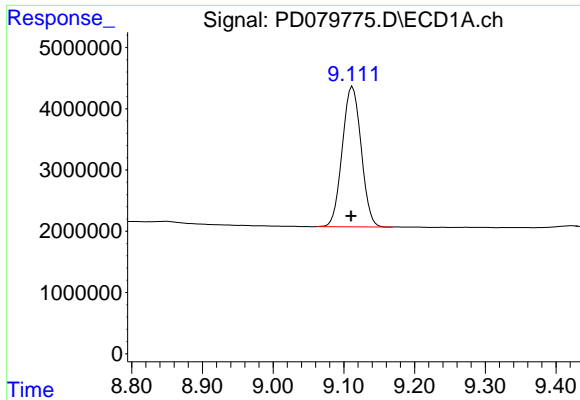
#15 Endosulfan II

R.T.: 0.000 min  
 Exp R.T.: 6.830 min  
 Response: 0  
 Conc: N.D.



#15 Endosulfan II

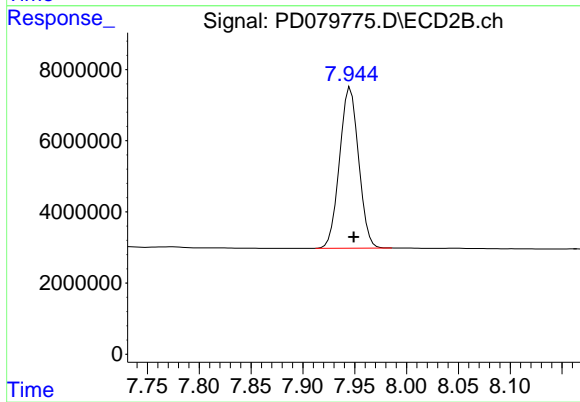
R.T.: 5.921 min  
 Delta R.T.: -0.042 min  
 Response: 361554  
 Conc: 0.14 ng/ml



#27 Decachlorobiphenyl

R.T.: 9.112 min  
Delta R.T.: 0.002 min  
Response: 42509074  
Conc: 23.95 ng/ml

Instrument :  
ECD\_D  
ClientSampleId :



#27 Decachlorobiphenyl

R.T.: 7.946 min  
Delta R.T.: -0.003 min  
Response: 57844080  
Conc: 24.23 ng/ml