

Data Path : Z:\pestpcbsrv\HPCHEM1\ECD_D\Data\PD112123\
 Data File : PD079780.D
 Signal(s) : Signal #1: ECD1A.ch Signal #2: ECD2B.ch
 Acq On : 21 Nov 2023 20:34
 Operator : AR\AJ
 Sample : 05439-21
 Misc :
 ALS Vial : 32 Sample Multiplier: 1

Instrument :
 ECD_D
 ClientSampleId :

Integration File signal 1: autoint1.e
 Integration File signal 2: autoint2.e
 Quant Time: Nov 22 01:14:33 2023
 Quant Method : Z:\pestpcbsrv\HPCHEM1\ECD_D\Method\PD110623CLP.M
 Quant Title : GC Extractables
 QLast Update : Sat Nov 04 07:14:58 2023
 Response via : Initial Calibration
 Integrator: ChemStation

Volume Inj. : 1 µl
 Signal #1 Phase : ZB-MR2 Signal #2 Phase: ZB-MR2
 Signal #1 Info : 30M x 0.32mm x0.5 Signal #2 Info : 30M x 0.32mm x 0.25µm

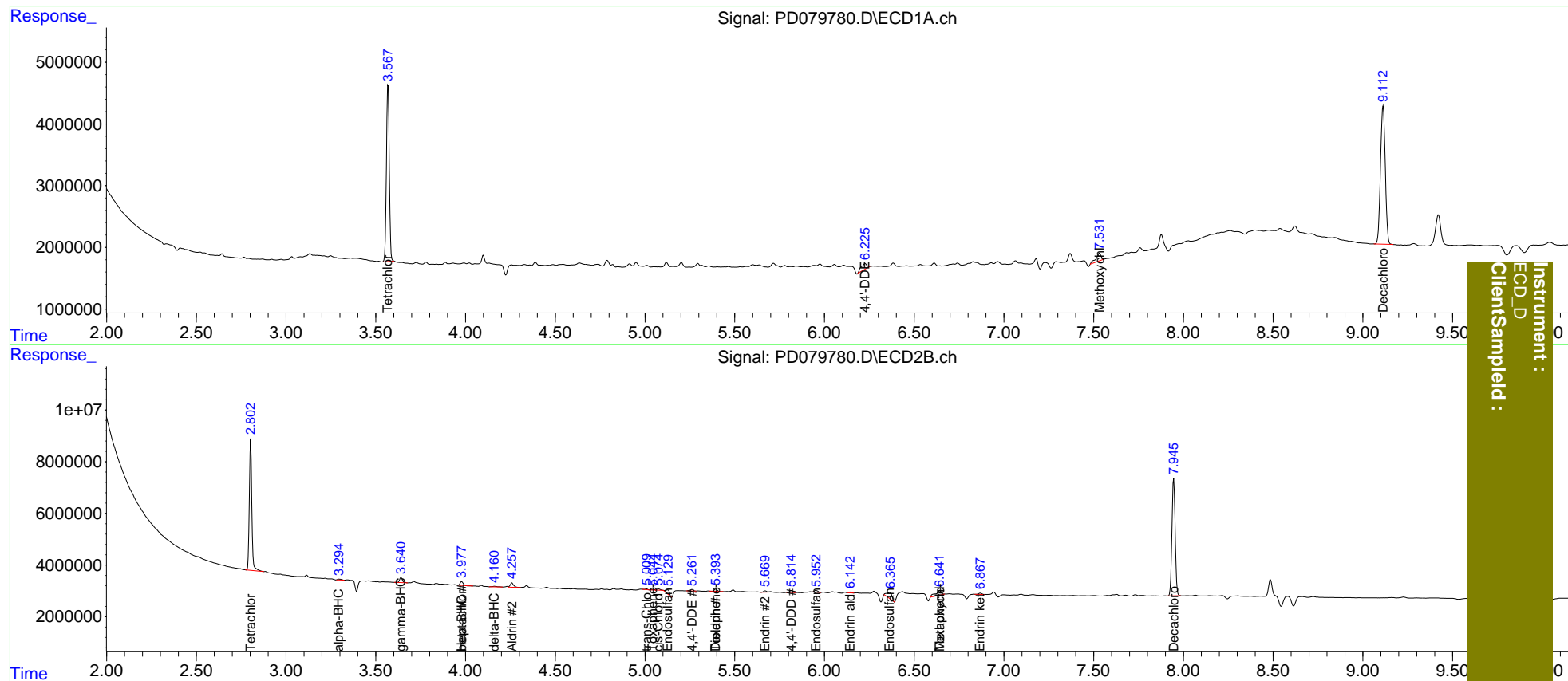
Compound	RT#1	RT#2	Resp#1	Resp#2	ng/ml	ng/ml
System Monitoring Compounds						
1) SA Tetrachlo...	3.568	2.803	31934262	49811501	21.867	21.777
27) SA Decachlor...	9.113	7.946	41624726	57052804	23.457	23.897
Target Compounds						
2) A alpha-BHC	0.000	3.296	0	468486	N.D.	0.129
3) MA gamma-BHC...	0.000	3.641	0	2257258	N.D.	0.657
4) MA Heptachlor	0.000	3.979	0	1789360	N.D.	0.536
5) MB Aldrin	0.000	4.259	0	2268890	N.D.	0.697
6) B beta-BHC	0.000	3.979f	0	1789360	N.D.	1.093
7) B delta-BHC	0.000	4.162	0	417840	N.D.	0.117
8) B Heptachlo...	0.000	4.760	0	187920	N.D.	<MDL
9) A Endosulfan I	0.000	5.127	0	2397758	N.D.	0.865
10) B trans-Chl...	0.000	5.009	0	301061	N.D.	0.101
11) B cis-Chlor...	0.000	5.075	0	664448	N.D.	0.219
12) B 4,4'-DDE	6.227	5.263	2085210	632311	1.056	0.226 #
13) MA Dieldrin	0.000	5.395	0	946338	N.D.	0.297
14) MA Endrin	0.000	5.670	0	546798	N.D.	0.200
15) B Endosulfa...	0.000	5.953	0	941720	N.D.	0.363
16) A 4,4'-DDD	0.000	5.815	0	934202	N.D.	0.397
17) MA 4,4'-DDT	0.000	6.045	0	106090	N.D.	<MDL
18) B Endrin al...	0.000	6.144	0	358326	N.D.	0.177
19) B Endosulfa...	0.000	6.362	0	4841799	N.D.	1.949
20) A Methoxychlor	7.532	6.642	2435062	4117189	2.641	3.203
21) B Endrin ke...	0.000	6.869	0	565185	N.D.	0.199
22) Toxaphene-1	0.000	5.045	0	261609	N.D.	15.646
23) Toxaphene-2	0.000	5.395	0	946338	N.D.	56.315
24) Toxaphene-3	0.000	6.642	0	4117189	N.D.	71.498

(f)=RT Delta > 1/2 Window (#)=Amounts differ by > 25% (m)=manual int.

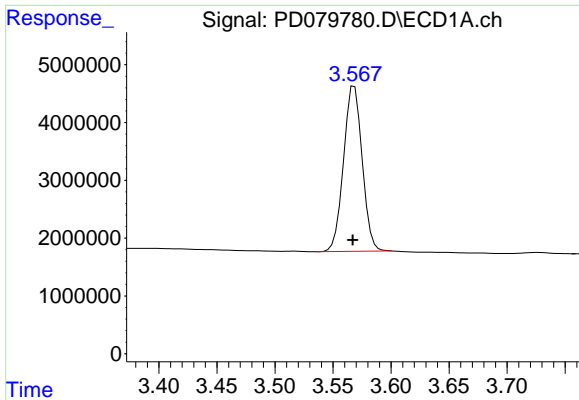
Data Path : Z:\pestpcbsrv\HPCHEM1\ECD_D\Data\PD112123\
 Data File : PD079780.D
 Signal(s) : Signal #1: ECD1A.ch Signal #2: ECD2B.ch
 Acq On : 21 Nov 2023 20:34
 Operator : AR\AJ
 Sample : 05439-21
 Misc :
 ALS Vial : 32 Sample Multiplier: 1

Integration File signal 1: autoint1.e
 Integration File signal 2: autoint2.e
 Quant Time: Nov 22 01:14:33 2023
 Quant Method : Z:\pestpcbsrv\HPCHEM1\ECD_D\Method\PD110623CLP.M
 Quant Title : GC Extractables
 QLast Update : Sat Nov 04 07:14:58 2023
 Response via : Initial Calibration
 Integrator: ChemStation

Volume Inj. : 1 µl
 Signal #1 Phase : ZB-MR1 Signal #2 Phase: ZB-MR2
 Signal #1 Info : 30M x 0.32mm x0.5 Signal #2 Info : 30M x 0.32mm x 0.25µm



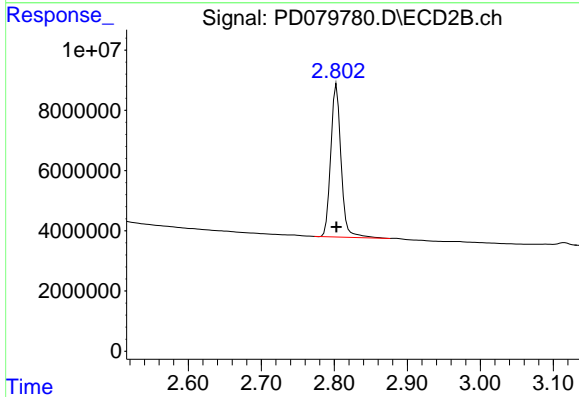
Instrument :
 ECD_D
 ClientSampleId :



#1 Tetrachloro-m-xylene

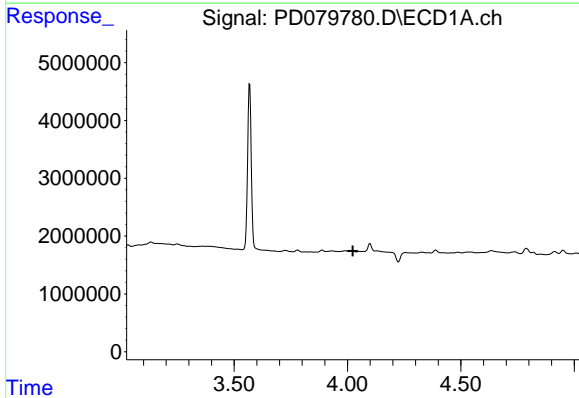
R.T.: 3.568 min
 Delta R.T.: 0.001 min
 Response: 31934262
 Conc: 21.87 ng/ml

Instrument :
 ECD_D
 ClientSampleId :



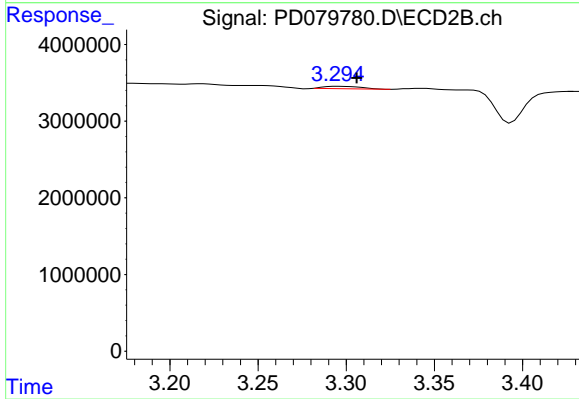
#1 Tetrachloro-m-xylene

R.T.: 2.803 min
 Delta R.T.: 0.000 min
 Response: 49811501
 Conc: 21.78 ng/ml



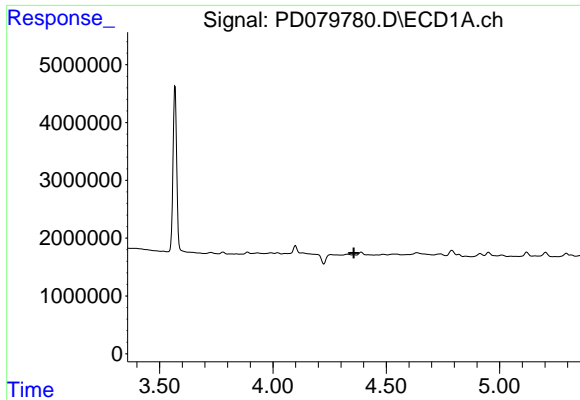
#2 alpha-BHC

R.T.: 0.000 min
 Exp R.T. : 4.024 min
 Response: 0
 Conc: N.D.



#2 alpha-BHC

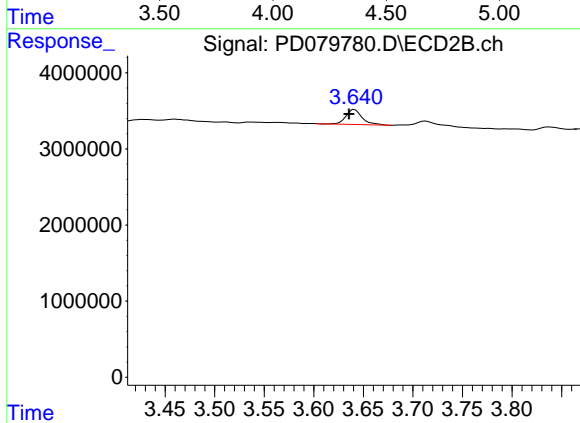
R.T.: 3.296 min
 Delta R.T.: -0.010 min
 Response: 468486
 Conc: 0.13 ng/ml



#3 gamma-BHC (Lindane)

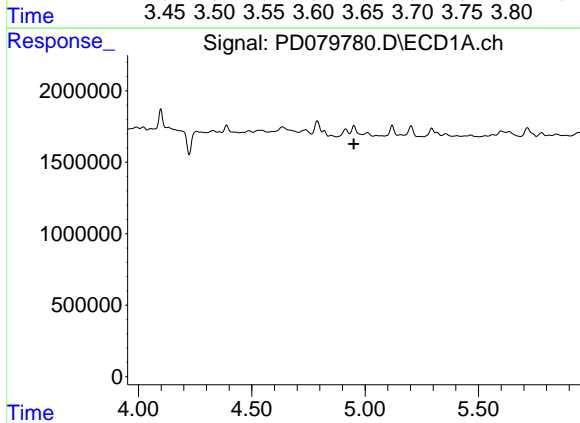
R.T.: 0.000 min
 Exp R.T.: 4.357 min
 Response: 0
 Conc: N.D.

Instrument :
 ECD_D
 ClientSampleId :



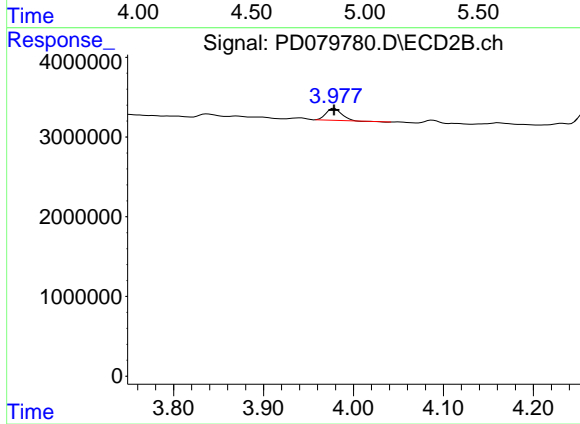
#3 gamma-BHC (Lindane)

R.T.: 3.641 min
 Delta R.T.: 0.005 min
 Response: 2257258
 Conc: 0.66 ng/ml



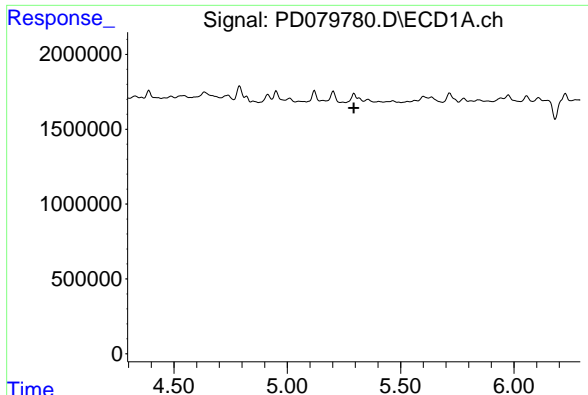
#4 Heptachlor

R.T.: 0.000 min
 Exp R.T.: 4.950 min
 Response: 0
 Conc: N.D.



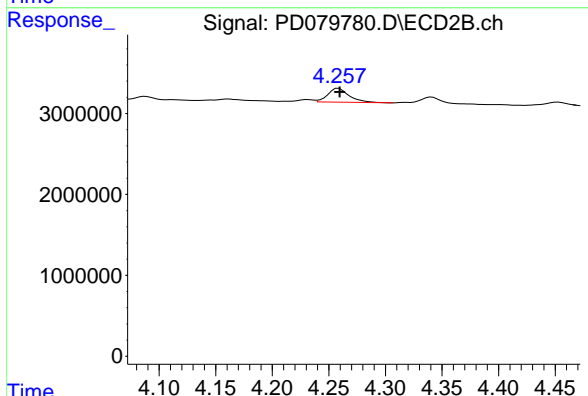
#4 Heptachlor

R.T.: 3.979 min
 Delta R.T.: 0.000 min
 Response: 1789360
 Conc: 0.54 ng/ml

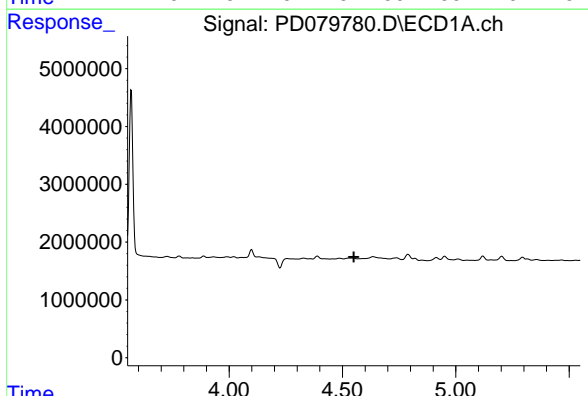


#5 Aldrin
 R.T.: 0.000 min
 Exp R.T.: 5.294 min
 Response: 0
 Conc: N.D.

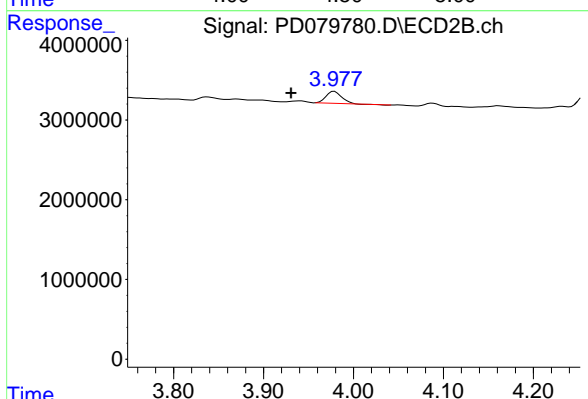
Instrument :
 ECD_D
 ClientSampleId :



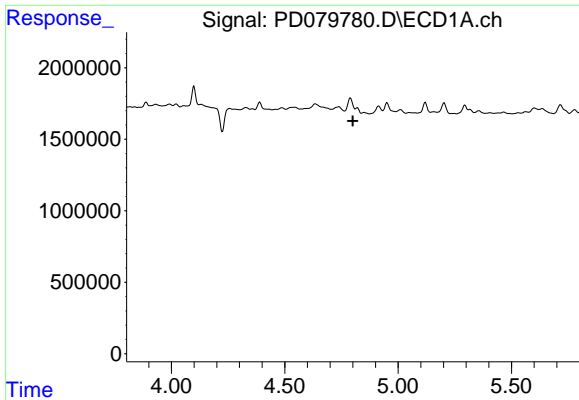
#5 Aldrin
 R.T.: 4.259 min
 Delta R.T.: 0.000 min
 Response: 2268890
 Conc: 0.70 ng/ml



#6 beta-BHC
 R.T.: 0.000 min
 Exp R.T.: 4.551 min
 Response: 0
 Conc: N.D.



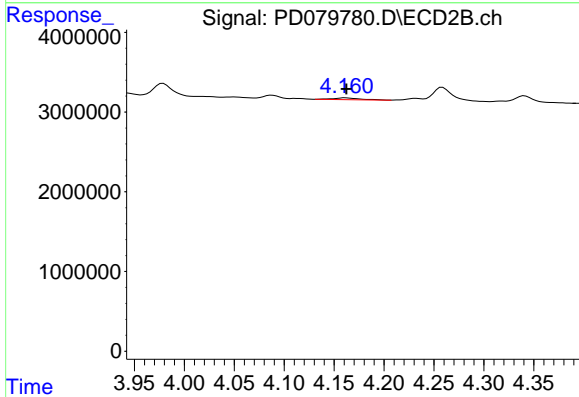
#6 beta-BHC
 R.T.: 3.979 min
 Delta R.T.: 0.048 min
 Response: 1789360
 Conc: 1.09 ng/ml



#7 delta-BHC

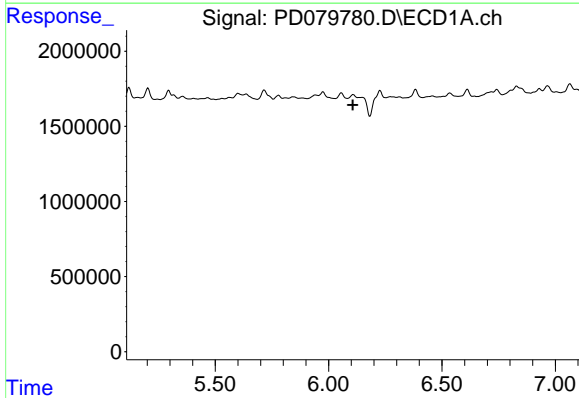
R.T.: 0.000 min
 Exp R.T.: 4.800 min
 Response: 0
 Conc: N.D.

Instrument :
 ECD_D
 ClientSampleId :



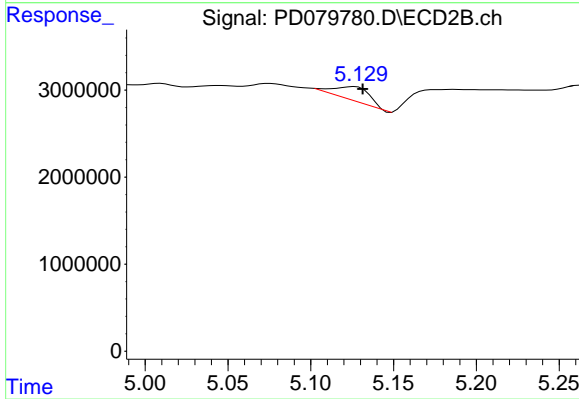
#7 delta-BHC

R.T.: 4.162 min
 Delta R.T.: 0.000 min
 Response: 417840
 Conc: 0.12 ng/ml



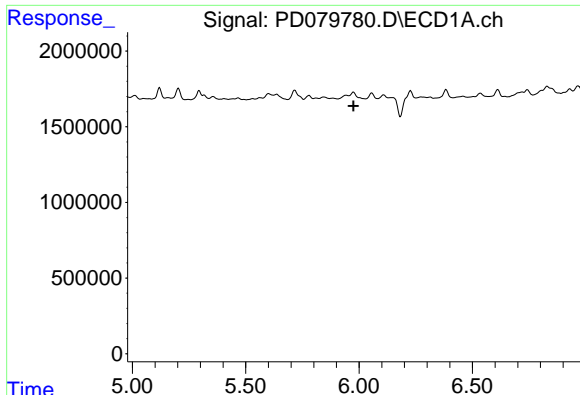
#9 Endosulfan I

R.T.: 0.000 min
 Exp R.T.: 6.106 min
 Response: 0
 Conc: N.D.



#9 Endosulfan I

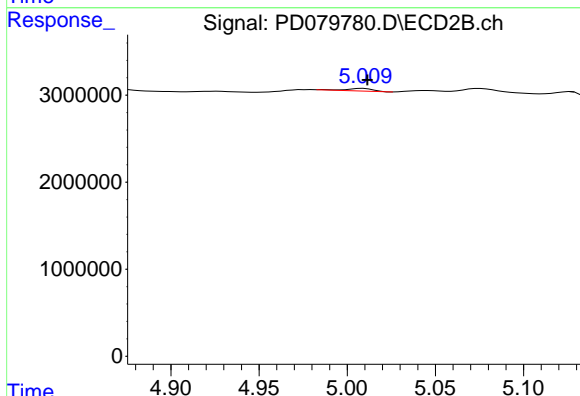
R.T.: 5.127 min
 Delta R.T.: -0.005 min
 Response: 2397758
 Conc: 0.86 ng/ml



#10 trans-Chlordane

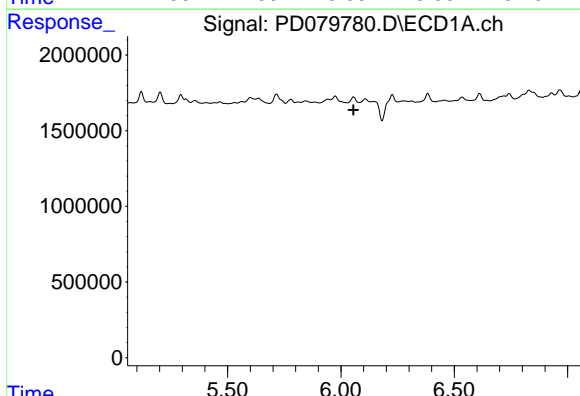
R.T.: 0.000 min
 Exp R.T.: 5.976 min
 Response: 0
 Conc: N.D.

Instrument :
 ECD_D
 ClientSampleId :



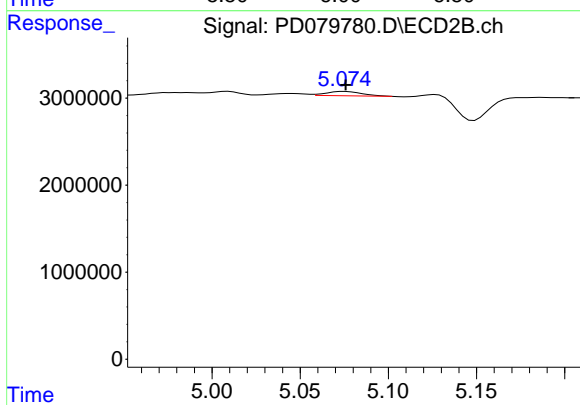
#10 trans-Chlordane

R.T.: 5.009 min
 Delta R.T.: -0.002 min
 Response: 301061
 Conc: 0.10 ng/ml



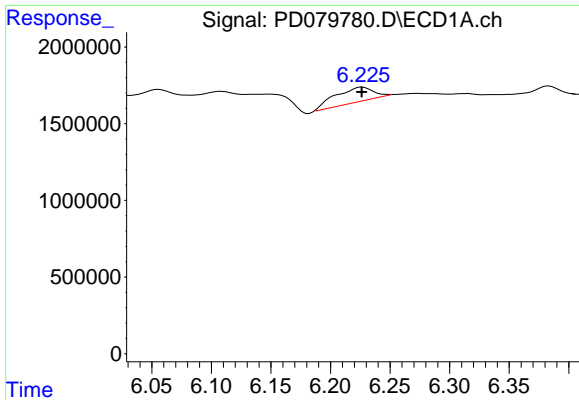
#11 cis-Chlordane

R.T.: 0.000 min
 Exp R.T.: 6.056 min
 Response: 0
 Conc: N.D.



#11 cis-Chlordane

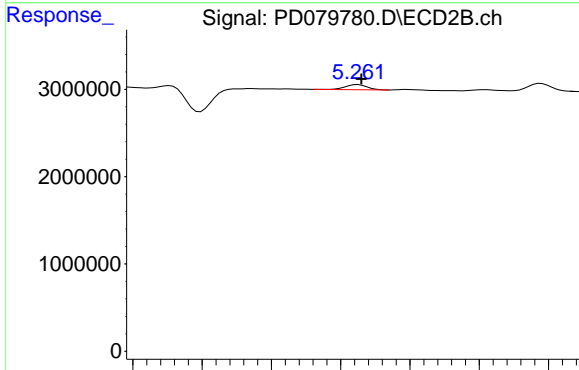
R.T.: 5.075 min
 Delta R.T.: 0.000 min
 Response: 664448
 Conc: 0.22 ng/ml



#12 4,4'-DDE

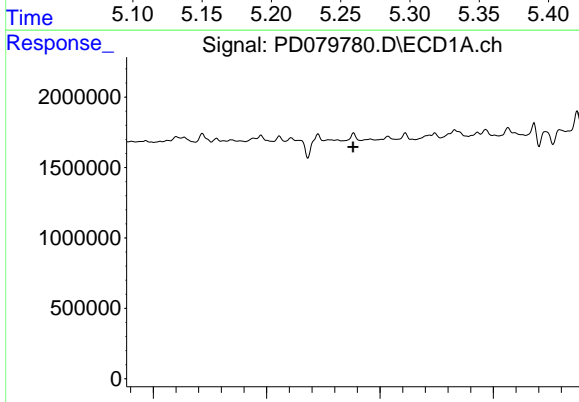
R.T.: 6.227 min
 Delta R.T.: 0.000 min
 Response: 2085210
 Conc: 1.06 ng/ml

Instrument :
 ECD_D
 ClientSampleId :



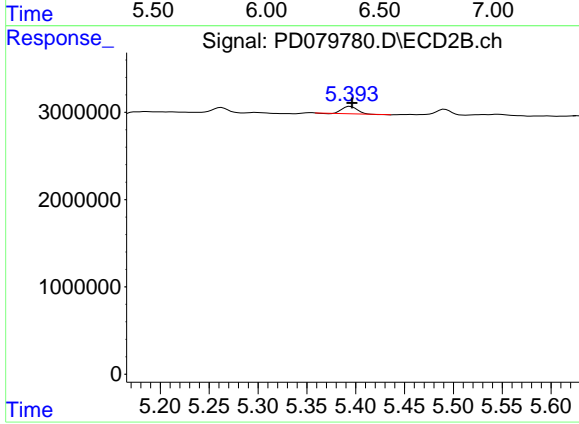
#12 4,4'-DDE

R.T.: 5.263 min
 Delta R.T.: -0.002 min
 Response: 632311
 Conc: 0.23 ng/ml



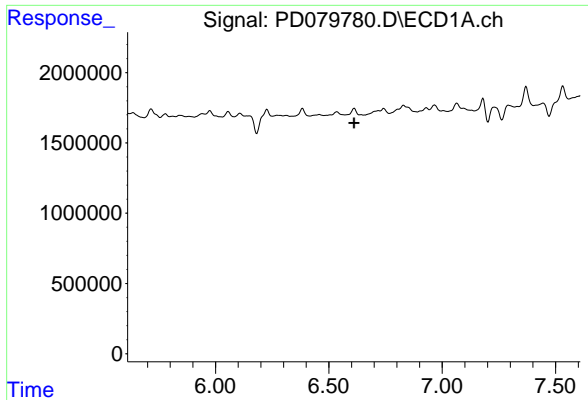
#13 Dieldrin

R.T.: 0.000 min
 Exp R.T. : 6.382 min
 Response: 0
 Conc: N.D.



#13 Dieldrin

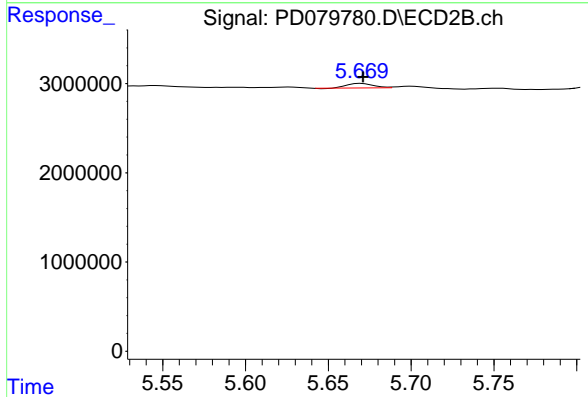
R.T.: 5.395 min
 Delta R.T.: -0.002 min
 Response: 946338
 Conc: 0.30 ng/ml



#14 Endrin

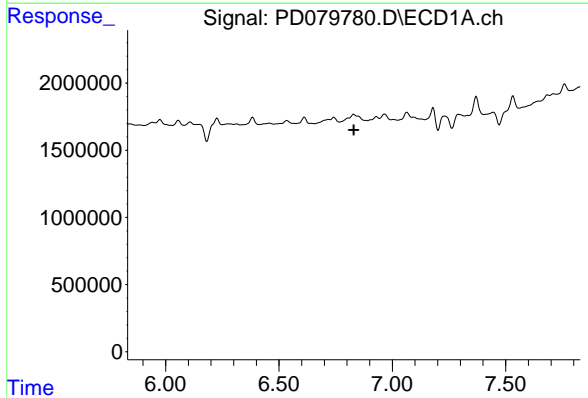
R.T.: 0.000 min
 Exp R.T.: 6.612 min
 Response: 0
 Conc: N.D.

Instrument :
 ECD_D
 ClientSampleId :



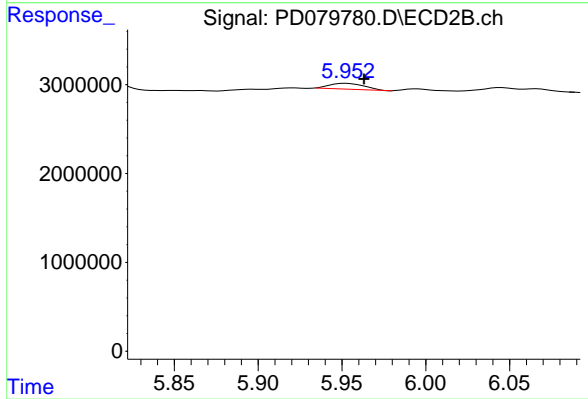
#14 Endrin

R.T.: 5.670 min
 Delta R.T.: 0.000 min
 Response: 546798
 Conc: 0.20 ng/ml



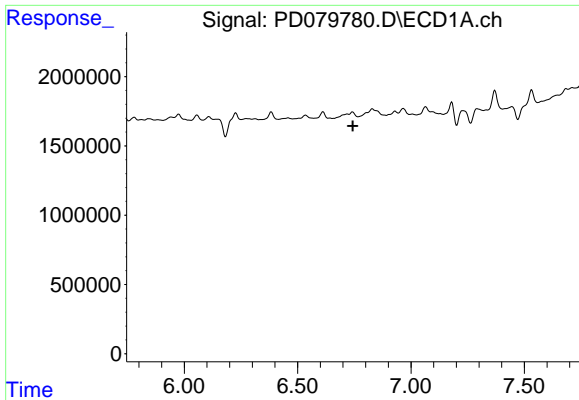
#15 Endosulfan II

R.T.: 0.000 min
 Exp R.T.: 6.830 min
 Response: 0
 Conc: N.D.



#15 Endosulfan II

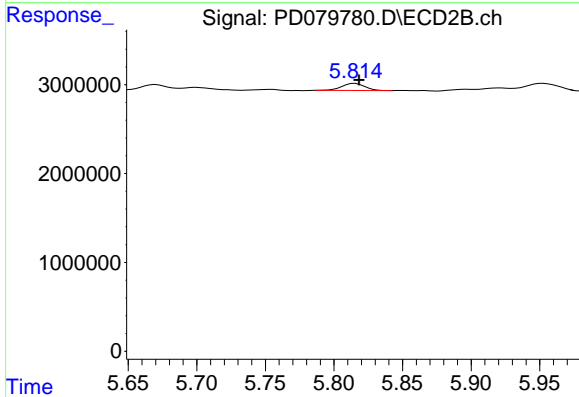
R.T.: 5.953 min
 Delta R.T.: -0.011 min
 Response: 941720
 Conc: 0.36 ng/ml



#16 4,4'-DDD

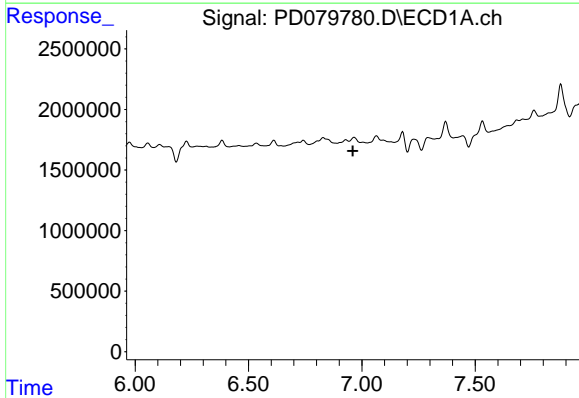
R.T.: 0.000 min
 Exp R.T. : 6.743 min
 Response: 0
 Conc: N.D.

Instrument :
 ECD_D
 ClientSampleId :



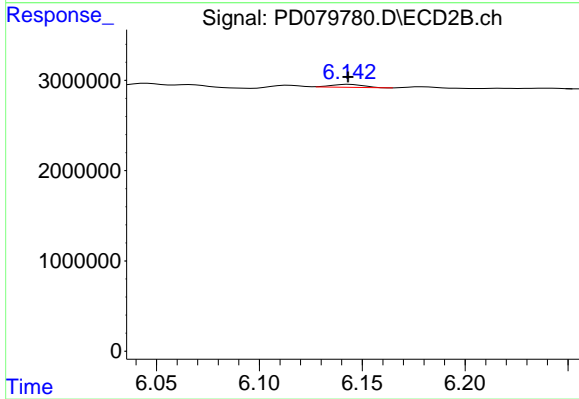
#16 4,4'-DDD

R.T.: 5.815 min
 Delta R.T.: -0.003 min
 Response: 934202
 Conc: 0.40 ng/ml



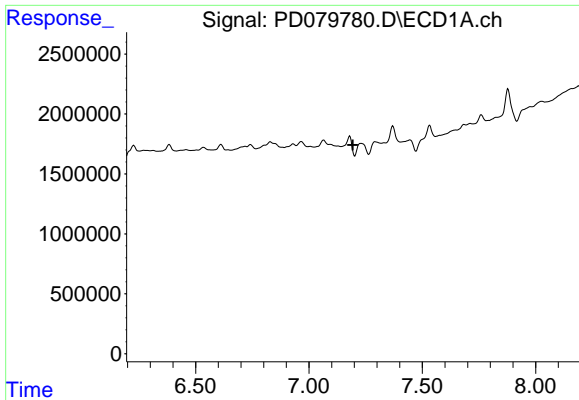
#18 Endrin aldehyde

R.T.: 0.000 min
 Exp R.T. : 6.959 min
 Response: 0
 Conc: N.D.



#18 Endrin aldehyde

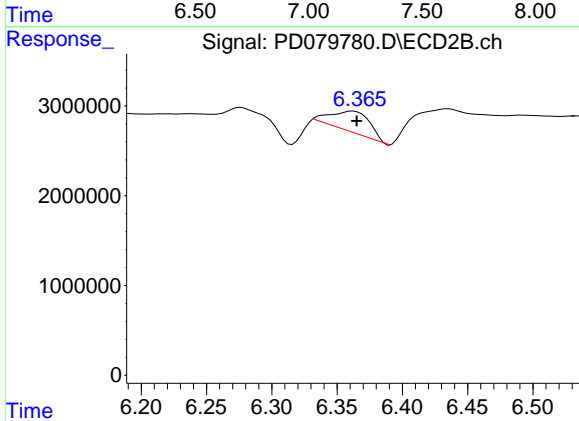
R.T.: 6.144 min
 Delta R.T.: 0.000 min
 Response: 358326
 Conc: 0.18 ng/ml



#19 Endosulfan Sulfate

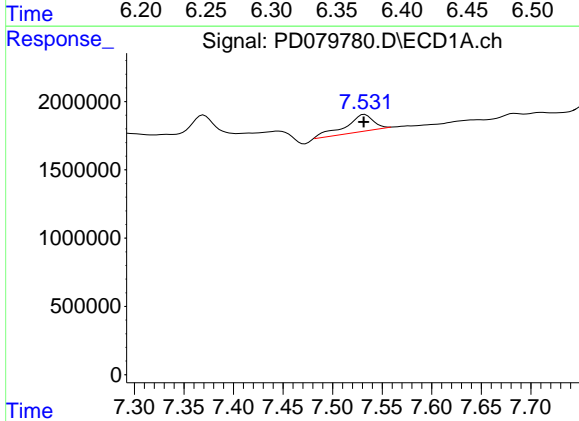
R.T.: 0.000 min
 Exp R.T.: 7.193 min
 Response: 0
 Conc: N.D.

Instrument :
 ECD_D
 ClientSampleId :



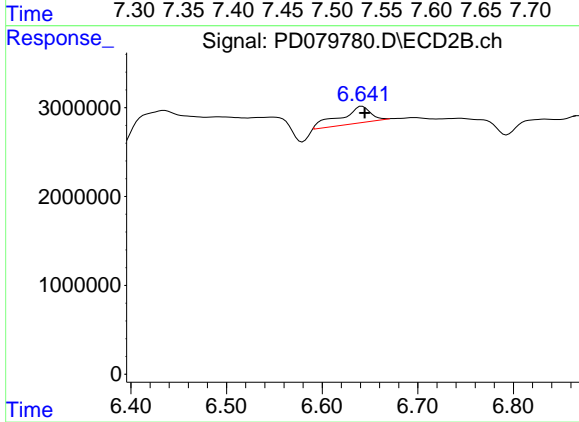
#19 Endosulfan Sulfate

R.T.: 6.362 min
 Delta R.T.: -0.003 min
 Response: 4841799
 Conc: 1.95 ng/ml



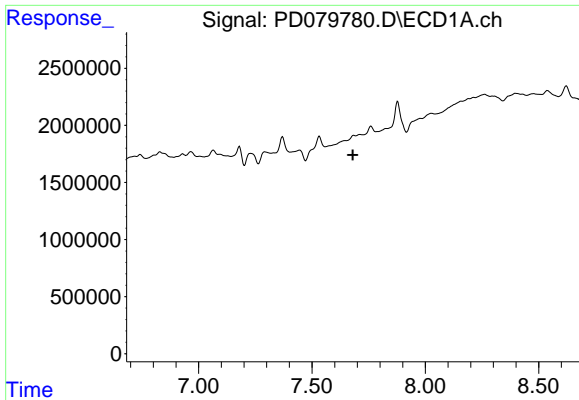
#20 Methoxychlor

R.T.: 7.532 min
 Delta R.T.: 0.000 min
 Response: 2435062
 Conc: 2.64 ng/ml



#20 Methoxychlor

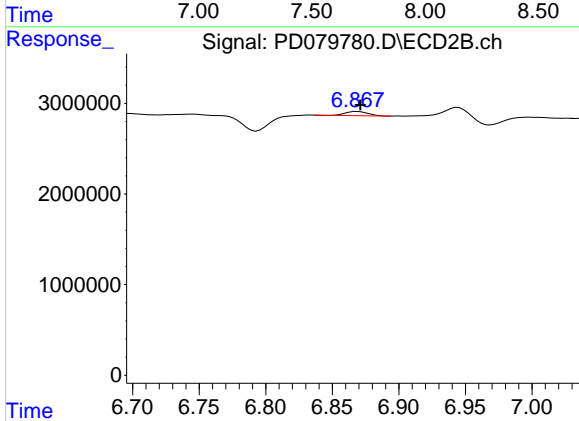
R.T.: 6.642 min
 Delta R.T.: -0.003 min
 Response: 4117189
 Conc: 3.20 ng/ml



#21 Endrin ketone

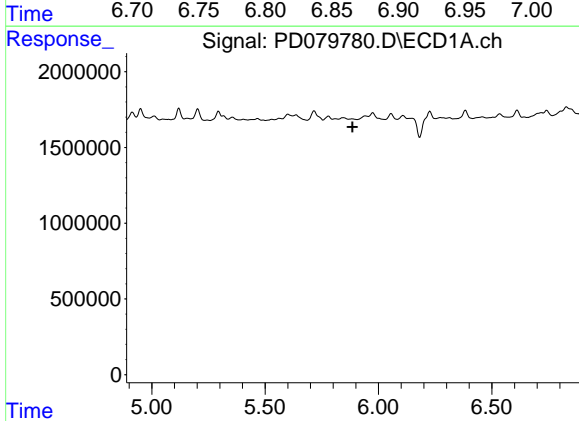
R.T.: 0.000 min
 Exp R.T.: 7.681 min
 Response: 0
 Conc: N.D.

Instrument :
 ECD_D
 ClientSampleId :



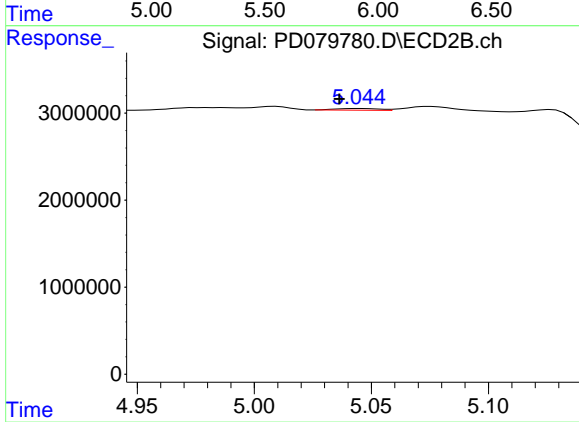
#21 Endrin ketone

R.T.: 6.869 min
 Delta R.T.: -0.003 min
 Response: 565185
 Conc: 0.20 ng/ml



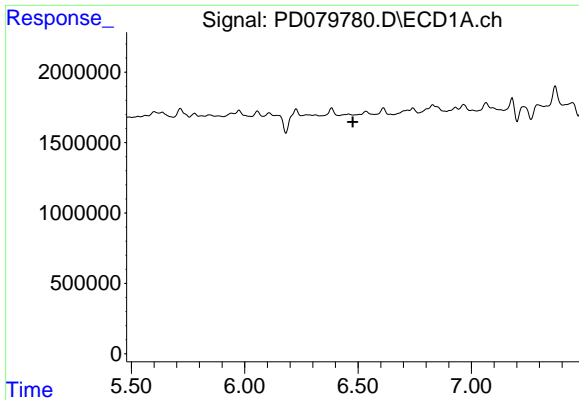
#22 Toxaphene-1

R.T.: 0.000 min
 Exp R.T.: 5.886 min
 Response: 0
 Conc: N.D.



#22 Toxaphene-1

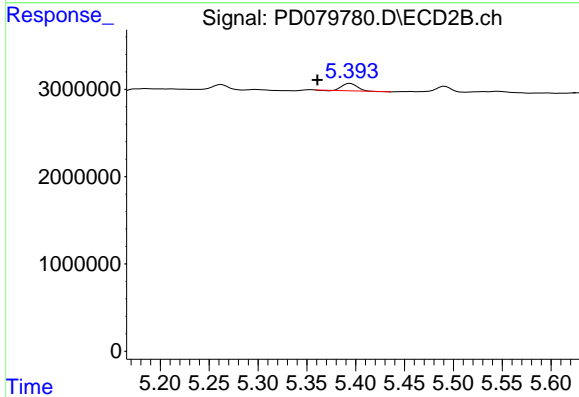
R.T.: 5.045 min
 Delta R.T.: 0.009 min
 Response: 261609
 Conc: 15.65 ng/ml



#23 Toxaphene-2

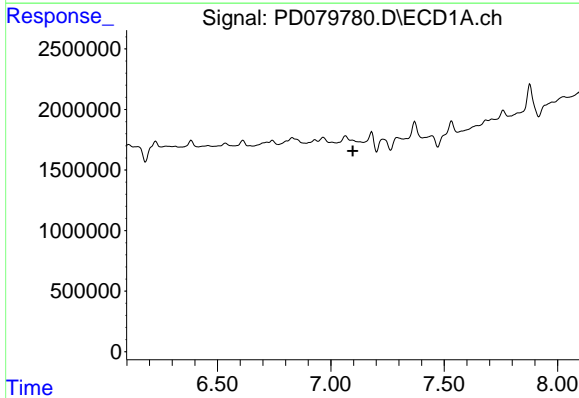
R.T.: 0.000 min
 Exp R.T.: 6.477 min
 Response: 0
 Conc: N.D.

Instrument :
 ECD_D
 ClientSampleId :



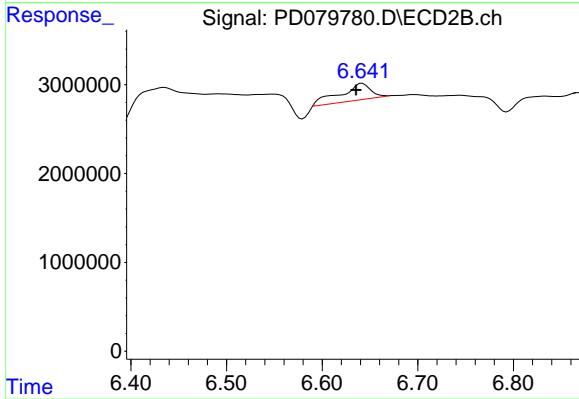
#23 Toxaphene-2

R.T.: 5.395 min
 Delta R.T.: 0.034 min
 Response: 946338
 Conc: 56.31 ng/ml



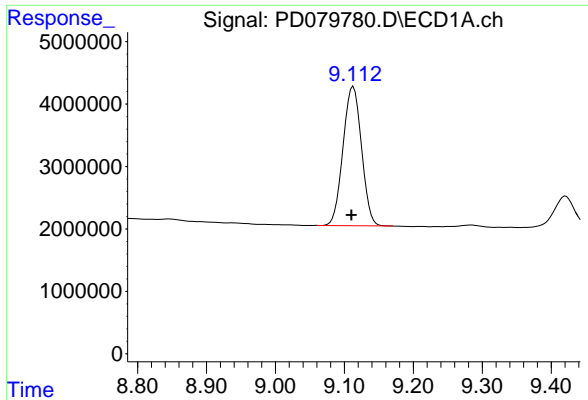
#24 Toxaphene-3

R.T.: 0.000 min
 Exp R.T.: 7.096 min
 Response: 0
 Conc: N.D.



#24 Toxaphene-3

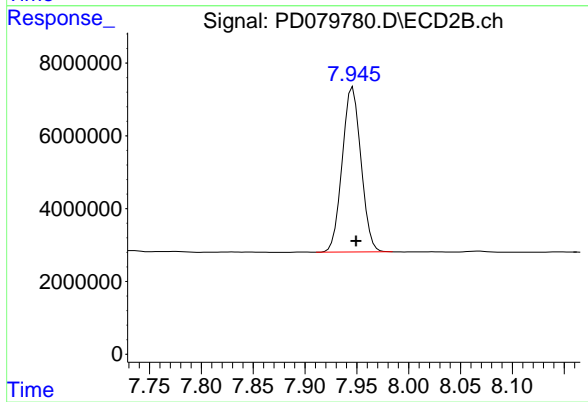
R.T.: 6.642 min
 Delta R.T.: 0.007 min
 Response: 4117189
 Conc: 71.50 ng/ml



#27 Decachlorobiphenyl

R.T.: 9.113 min
Delta R.T.: 0.003 min
Response: 41624726
Conc: 23.46 ng/ml

Instrument :
ECD_D
ClientSampleId :



#27 Decachlorobiphenyl

R.T.: 7.946 min
Delta R.T.: -0.003 min
Response: 57052804
Conc: 23.90 ng/ml