

Data Path : Z:\pestpcbsrv\HPCHEM1\ECD_D\Data\PD112123\
 Data File : PD079794.D
 Signal(s) : Signal #1: ECD1A.ch Signal #2: ECD2B.ch
 Acq On : 21 Nov 2023 23:41
 Operator : AR\AJ
 Sample : 05416-15
 Misc :
 ALS Vial : 46 Sample Multiplier: 1

Instrument :
 ECD_D
 ClientSampleId :

Integration File signal 1: autoint1.e
 Integration File signal 2: autoint2.e
 Quant Time: Nov 22 01:18:03 2023
 Quant Method : Z:\pestpcbsrv\HPCHEM1\ECD_D\Method\PD110623CLP.M
 Quant Title : GC Extractables
 QLast Update : Sat Nov 04 07:14:58 2023
 Response via : Initial Calibration
 Integrator: ChemStation

Volume Inj. : 1 µl
 Signal #1 Phase : ZB-MR2 Signal #2 Phase: ZB-MR2
 Signal #1 Info : 30M x 0.32mm x0.5 Signal #2 Info : 30M x 0.32mm x 0.25µm

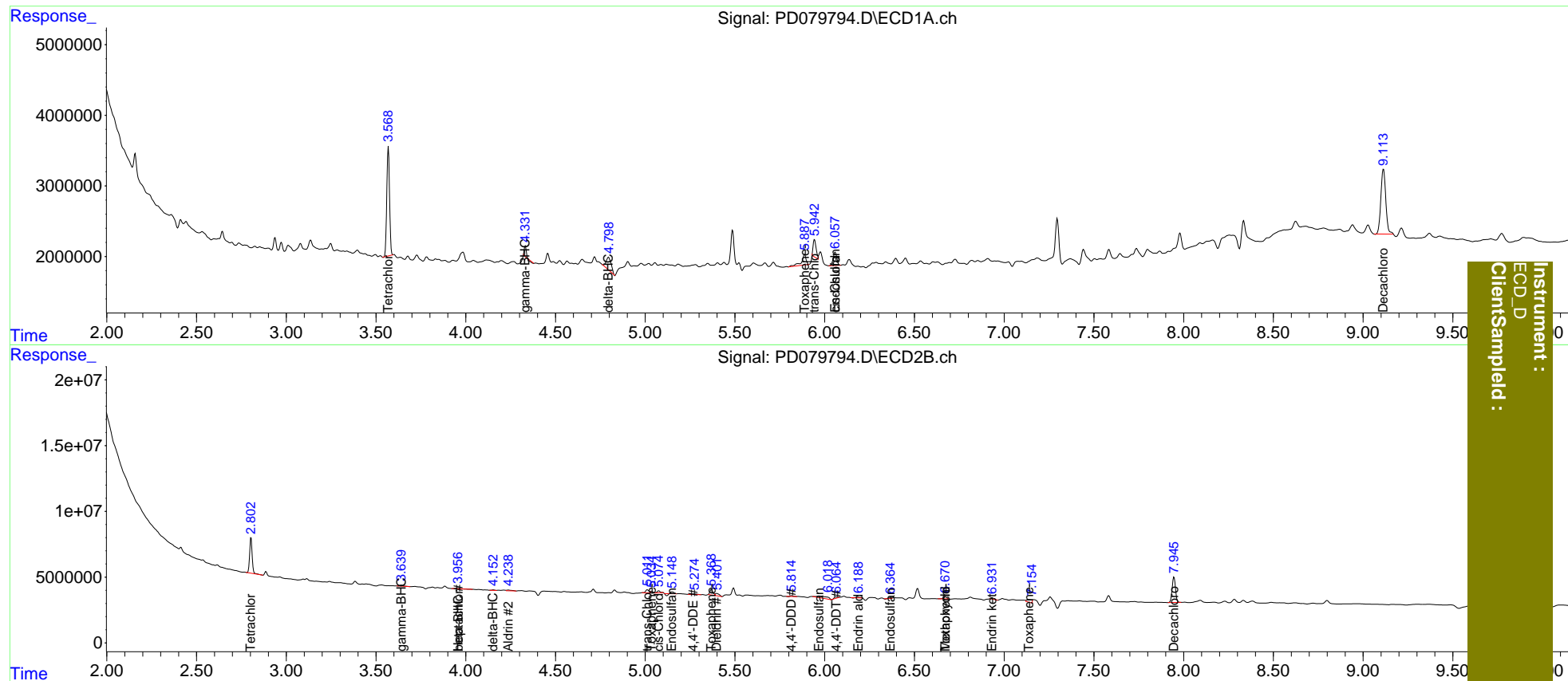
| Compound | RT#1 | RT#2 | Resp#1 | Resp#2 | ng/ml | ng/ml |
|-----------------------------|--------|--------|----------|----------|---------|----------|
| ----- | | | | | | |
| System Monitoring Compounds | | | | | | |
| 1) SA Tetrachlo... | 3.569 | 2.804 | 16430855 | 26709643 | 11.251 | 11.677 |
| 2) SA Decachlor... | 9.114 | 7.946 | 17688735 | 25106346 | 9.968 | 10.516 |
| Target Compounds | | | | | | |
| 3) MA gamma-BHC... | 4.332f | 3.641 | 982973 | 1127965 | 0.416 | 0.328 |
| 4) MA Heptachlor | 0.000 | 3.957 | 0 | 984383 | N.D. | 0.295 |
| 5) MB Aldrin | 0.000 | 4.238 | 0 | 1081936 | N.D. | 0.333 |
| 6) B beta-BHC | 0.000 | 3.957f | 0 | 984383 | N.D. | 0.601 |
| 7) B delta-BHC | 4.796 | 4.154 | 3581426 | 387287 | 1.437 | 0.108 # |
| 9) A Endosulfan I | 6.059f | 5.149 | 2664475 | 949959 | 1.289 | 0.343 # |
| 10) B trans-Chl... | 5.944 | 5.012 | 2881068 | 2843055 | 1.354 | 0.958 # |
| 11) B cis-Chlor... | 6.059 | 5.075 | 2664475 | 1665485 | 1.223 | 0.549 # |
| 12) B 4,4'-DDE | 0.000 | 5.272 | 0 | 772406 | N.D. | 0.276 |
| 13) MA Dieldrin | 0.000 | 5.399 | 0 | 2851457 | N.D. | 0.895 |
| 14) MA Endrin | 0.000 | 5.684 | 0 | 184732 | N.D. | <MDL |
| 15) B Endosulfa... | 0.000 | 5.969 | 0 | 5983198 | N.D. | 2.304 |
| 16) A 4,4'-DDD | 0.000 | 5.816 | 0 | 634076 | N.D. | 0.269 |
| 17) MA 4,4'-DDT | 0.000 | 6.065 | 0 | 1096726 | N.D. | 0.457 |
| 18) B Endrin al... | 0.000 | 6.188f | 0 | 664159 | N.D. | 0.328 |
| 19) B Endosulfa... | 0.000 | 6.366 | 0 | 381921 | N.D. | 0.154 |
| 20) A Methoxychlor | 0.000 | 6.672 | 0 | 2009703 | N.D. | 1.564 |
| 21) B Endrin ke... | 0.000 | 6.932f | 0 | 1130603 | N.D. | 0.398 |
| 22) Toxaphene-1 | 5.888 | 5.036 | 2624512 | 1150807 | 382.730 | 68.824 # |
| 23) Toxaphene-2 | 0.000 | 5.369 | 0 | 4816270 | N.D. | 286.606 |
| 24) Toxaphene-3 | 0.000 | 6.672f | 0 | 2009703 | N.D. | 34.900 |
| 26) Toxaphene-5 | 0.000 | 7.141f | 0 | 4085200 | N.D. | 122.352 |

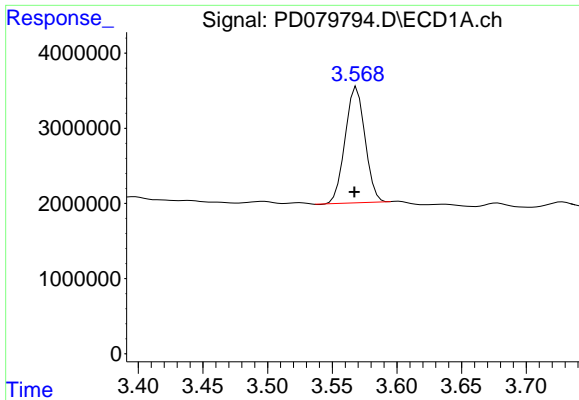
(f)=RT Delta > 1/2 Window (#)=Amounts differ by > 25% (m)=manual int.

Data Path : Z:\pestpcbsrv\HPCHEM1\ECD_D\Data\PD112123\
 Data File : PD079794.D
 Signal(s) : Signal #1: ECD1A.ch Signal #2: ECD2B.ch
 Acq On : 21 Nov 2023 23:41
 Operator : AR\AJ
 Sample : 05416-15
 Misc :
 ALS Vial : 46 Sample Multiplier: 1

Integration File signal 1: autoint1.e
 Integration File signal 2: autoint2.e
 Quant Time: Nov 22 01:18:03 2023
 Quant Method : Z:\pestpcbsrv\HPCHEM1\ECD_D\Method\PD110623CLP.M
 Quant Title : GC Extractables
 QLast Update : Sat Nov 04 07:14:58 2023
 Response via : Initial Calibration
 Integrator: ChemStation

Volume Inj. : 1 µl
 Signal #1 Phase : ZB-MR1 Signal #2 Phase: ZB-MR2
 Signal #1 Info : 30M x 0.32mm x0.5 Signal #2 Info : 30M x 0.32mm x 0.25µm

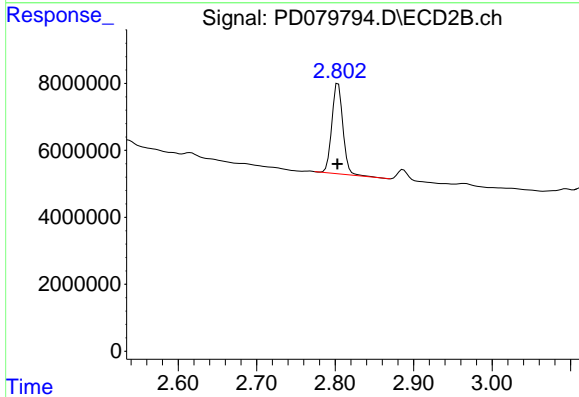




#1 Tetrachloro-m-xylene

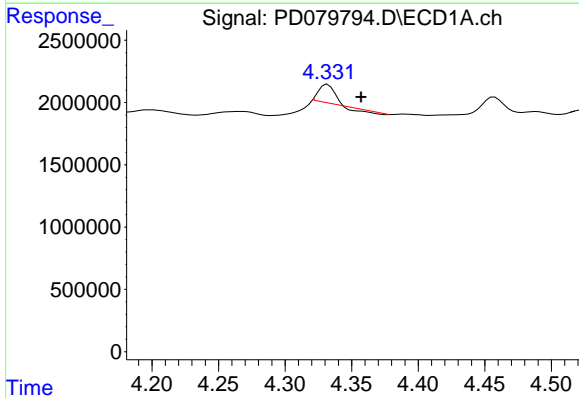
R.T.: 3.569 min
 Delta R.T.: 0.002 min
 Response: 16430855
 Conc: 11.25 ng/ml

Instrument :
 ECD_D
 ClientSampleId :



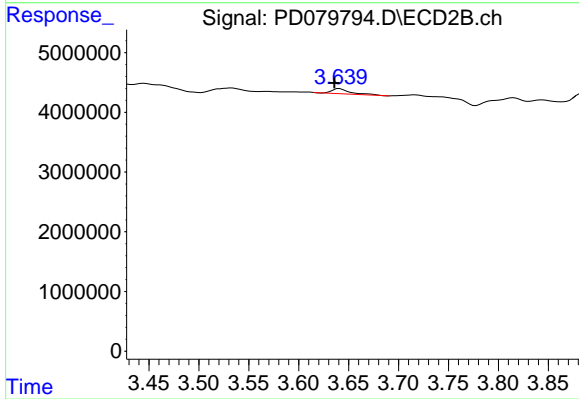
#1 Tetrachloro-m-xylene

R.T.: 2.804 min
 Delta R.T.: 0.001 min
 Response: 26709643
 Conc: 11.68 ng/ml



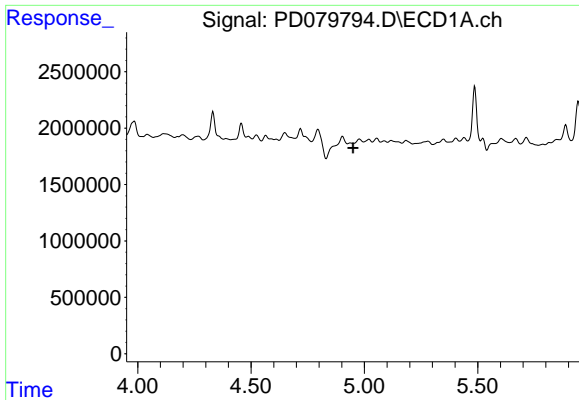
#3 gamma-BHC (Lindane)

R.T.: 4.332 min
 Delta R.T.: -0.025 min
 Response: 982973
 Conc: 0.42 ng/ml



#3 gamma-BHC (Lindane)

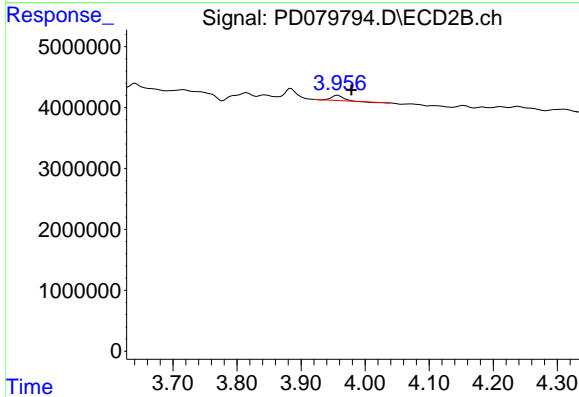
R.T.: 3.641 min
 Delta R.T.: 0.005 min
 Response: 1127965
 Conc: 0.33 ng/ml



#4 Heptachlor

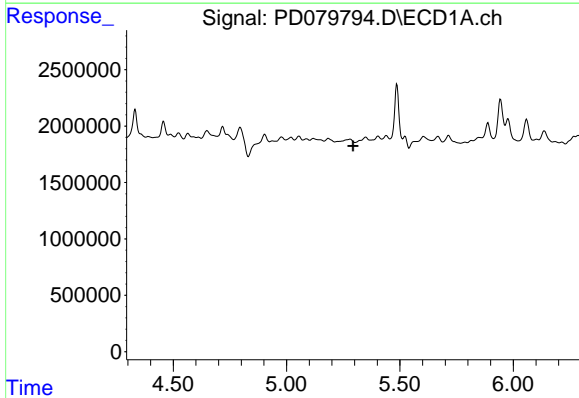
R.T.: 0.000 min
 Exp R.T.: 4.950 min
 Response: 0
 Conc: N.D.

Instrument :
 ECD_D
 ClientSampleId :



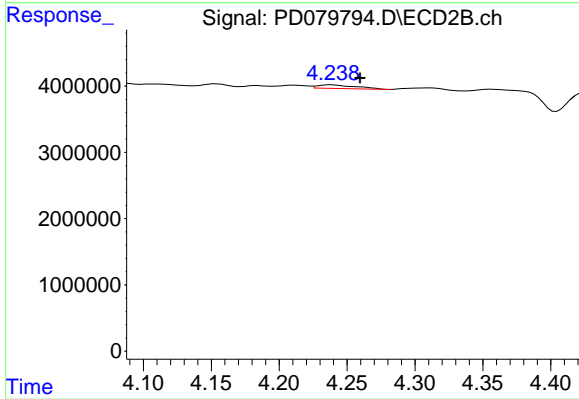
#4 Heptachlor

R.T.: 3.957 min
 Delta R.T.: -0.021 min
 Response: 984383
 Conc: 0.30 ng/ml



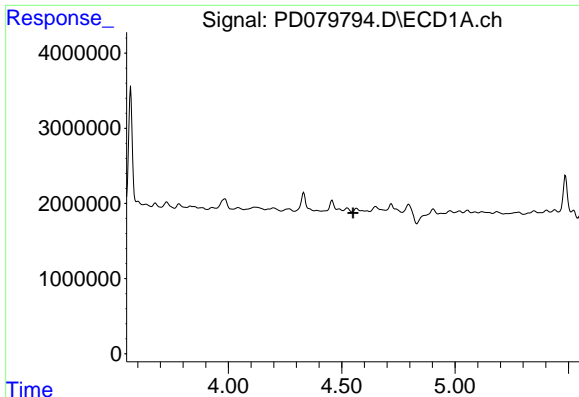
#5 Aldrin

R.T.: 0.000 min
 Exp R.T.: 5.294 min
 Response: 0
 Conc: N.D.



#5 Aldrin

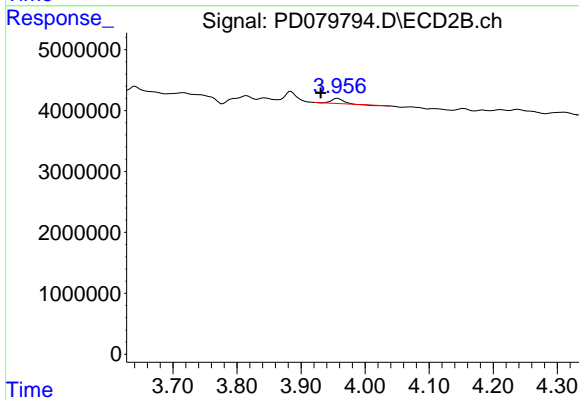
R.T.: 4.238 min
 Delta R.T.: -0.021 min
 Response: 1081936
 Conc: 0.33 ng/ml



#6 beta-BHC

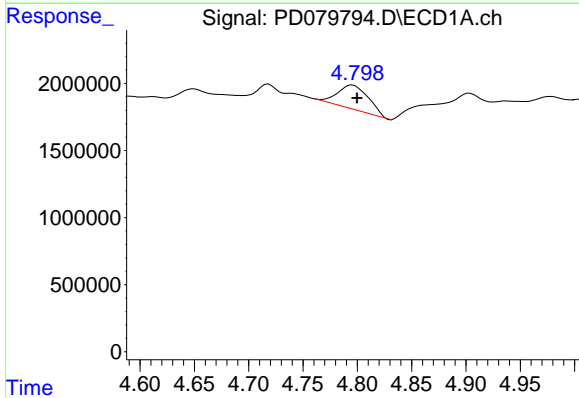
R.T.: 0.000 min
 Exp R.T.: 4.551 min
 Response: 0
 Conc: N.D.

Instrument :
 ECD_D
 ClientSampleId :



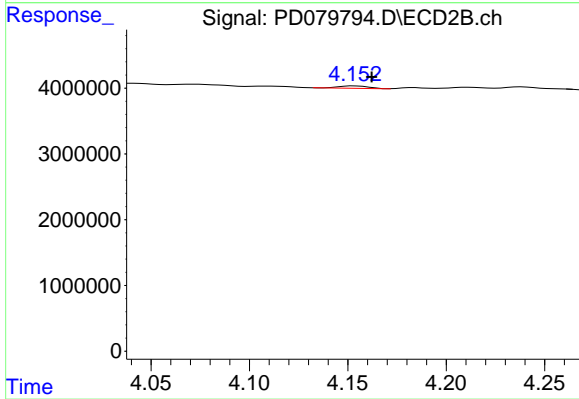
#6 beta-BHC

R.T.: 3.957 min
 Delta R.T.: 0.027 min
 Response: 984383
 Conc: 0.60 ng/ml



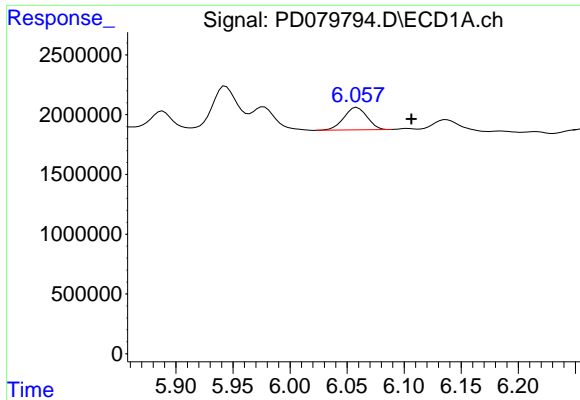
#7 delta-BHC

R.T.: 4.796 min
 Delta R.T.: -0.004 min
 Response: 3581426
 Conc: 1.44 ng/ml



#7 delta-BHC

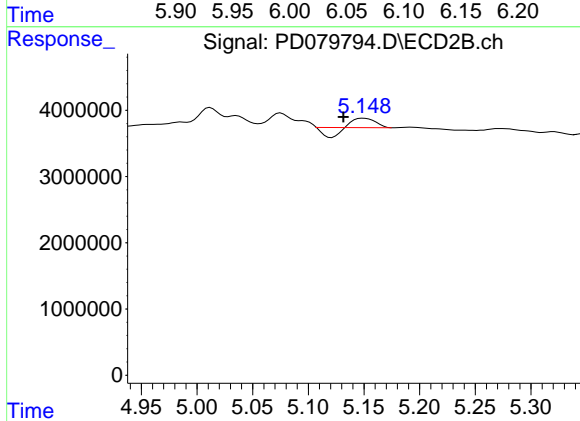
R.T.: 4.154 min
 Delta R.T.: -0.008 min
 Response: 387287
 Conc: 0.11 ng/ml



#9 Endosulfan I

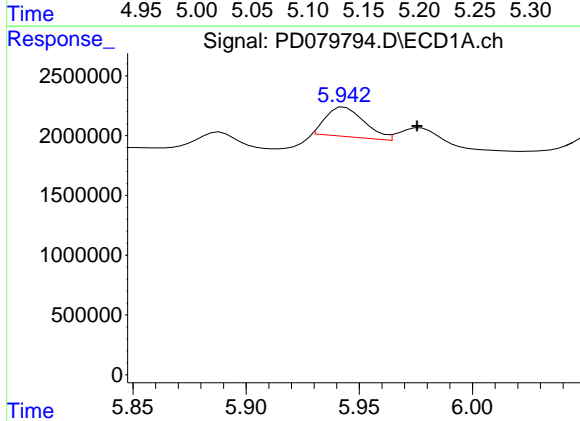
R.T.: 6.059 min
 Delta R.T.: -0.048 min
 Response: 2664475
 Conc: 1.29 ng/ml

Instrument :
 ECD_D
 ClientSampleId :



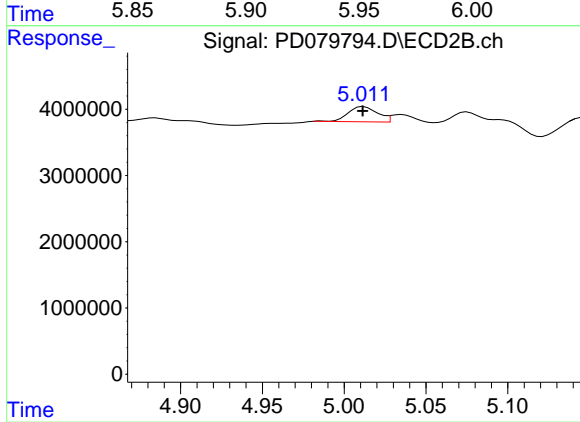
#9 Endosulfan I

R.T.: 5.149 min
 Delta R.T.: 0.018 min
 Response: 949959
 Conc: 0.34 ng/ml



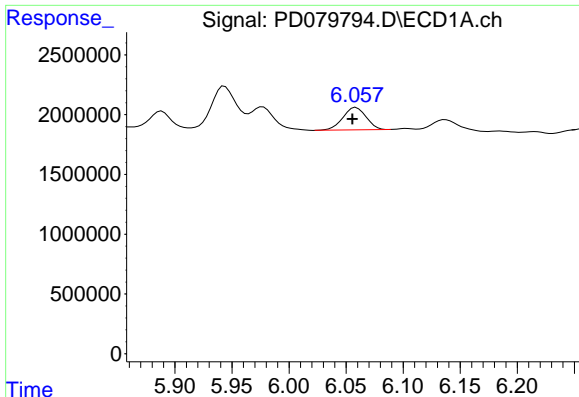
#10 trans-Chlordane

R.T.: 5.944 min
 Delta R.T.: -0.032 min
 Response: 2881068
 Conc: 1.35 ng/ml



#10 trans-Chlordane

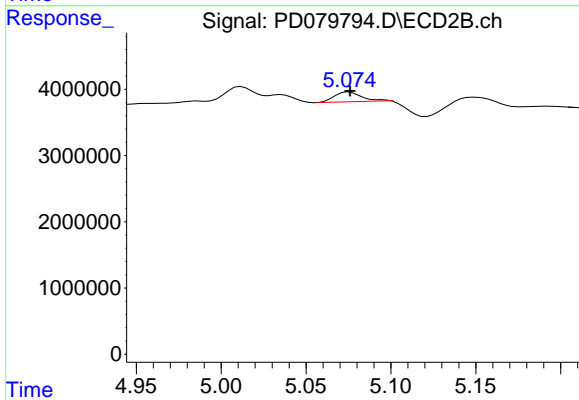
R.T.: 5.012 min
 Delta R.T.: 0.000 min
 Response: 2843055
 Conc: 0.96 ng/ml



#11 cis-Chlordane

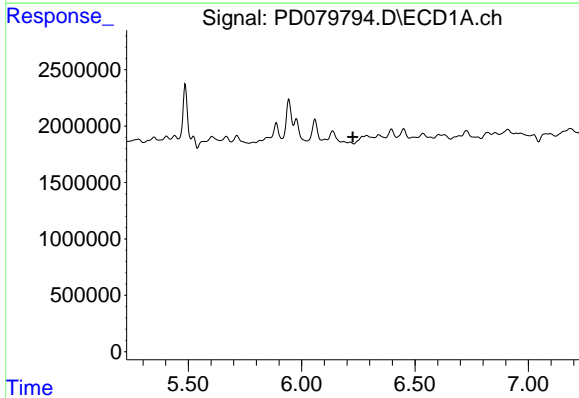
R.T.: 6.059 min
 Delta R.T.: 0.003 min
 Response: 2664475
 Conc: 1.22 ng/ml

Instrument :
 ECD_D
 ClientSampleId :



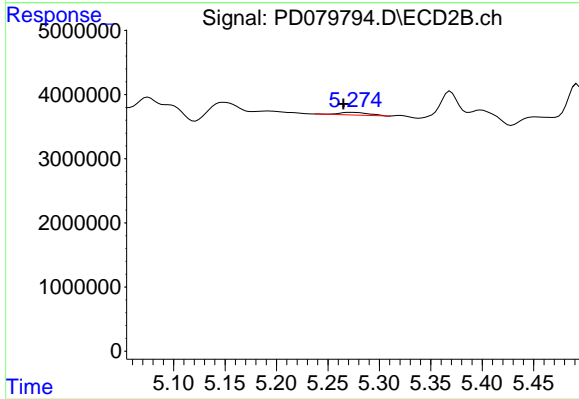
#11 cis-Chlordane

R.T.: 5.075 min
 Delta R.T.: 0.000 min
 Response: 1665485
 Conc: 0.55 ng/ml



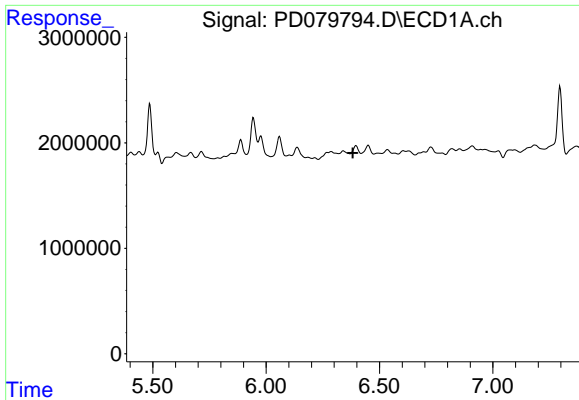
#12 4,4'-DDE

R.T.: 0.000 min
 Exp R.T. : 6.226 min
 Response: 0
 Conc: N.D.



#12 4,4'-DDE

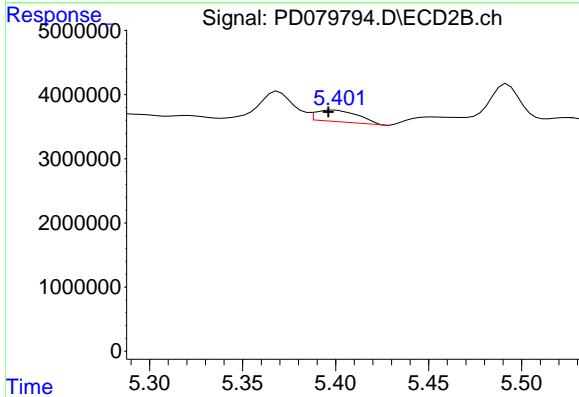
R.T.: 5.272 min
 Delta R.T.: 0.007 min
 Response: 772406
 Conc: 0.28 ng/ml



#13 Dieldrin

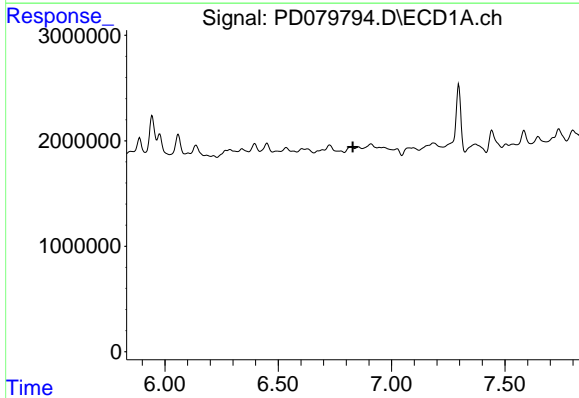
R.T.: 0.000 min
 Exp R.T.: 6.382 min
 Response: 0
 Conc: N.D.

Instrument :
 ECD_D
 ClientSampleId :



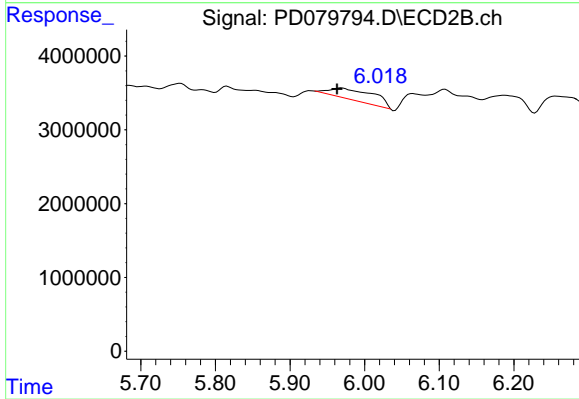
#13 Dieldrin

R.T.: 5.399 min
 Delta R.T.: 0.003 min
 Response: 2851457
 Conc: 0.90 ng/ml



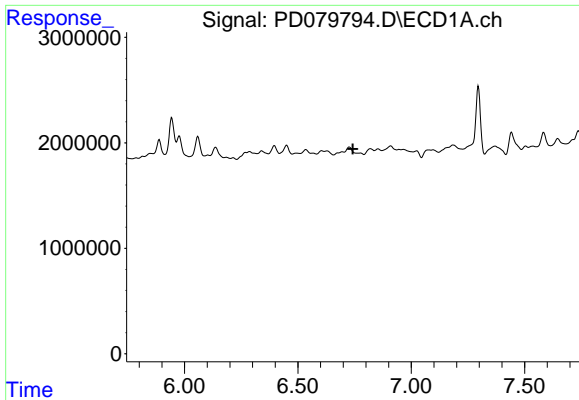
#15 Endosulfan II

R.T.: 0.000 min
 Exp R.T.: 6.830 min
 Response: 0
 Conc: N.D.



#15 Endosulfan II

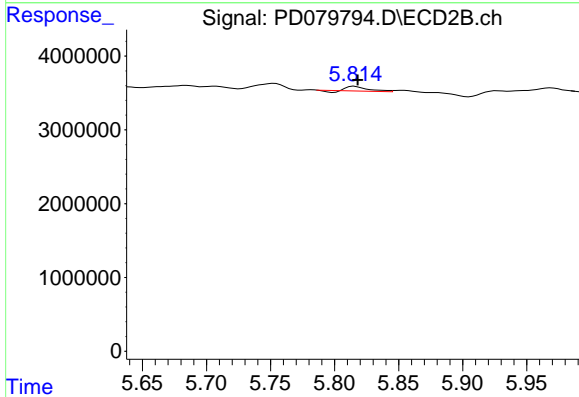
R.T.: 5.969 min
 Delta R.T.: 0.006 min
 Response: 5983198
 Conc: 2.30 ng/ml



#16 4,4'-DDD

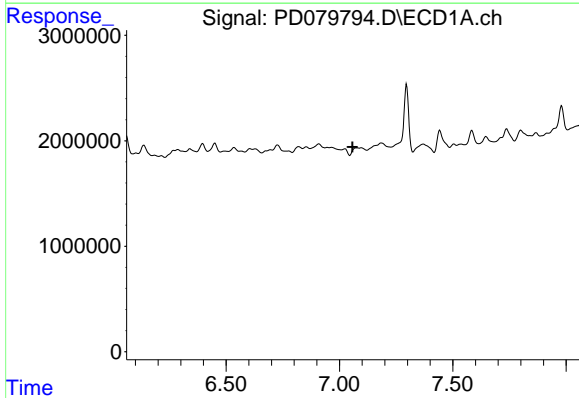
R.T.: 0.000 min
 Exp R.T.: 6.743 min
 Response: 0
 Conc: N.D.

Instrument :
 ECD_D
 ClientSampleId :



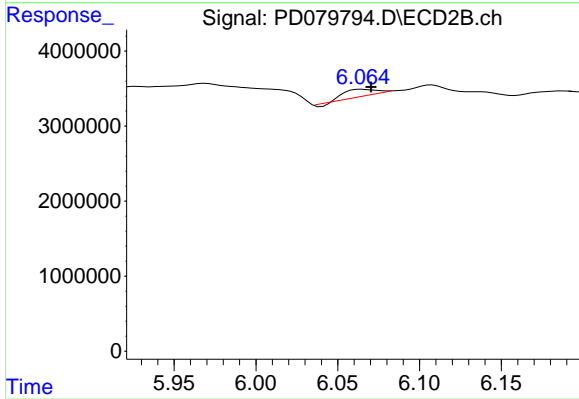
#16 4,4'-DDD

R.T.: 5.816 min
 Delta R.T.: -0.003 min
 Response: 634076
 Conc: 0.27 ng/ml



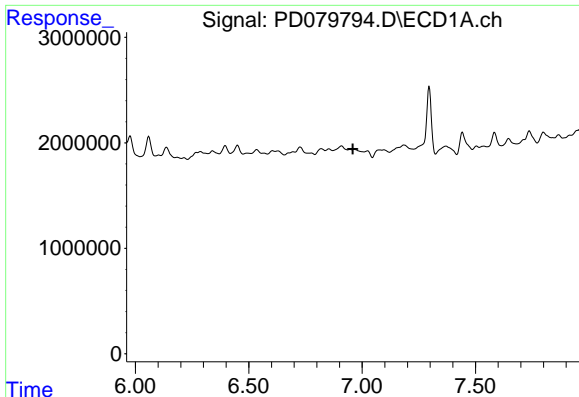
#17 4,4'-DDT

R.T.: 0.000 min
 Exp R.T.: 7.058 min
 Response: 0
 Conc: N.D.



#17 4,4'-DDT

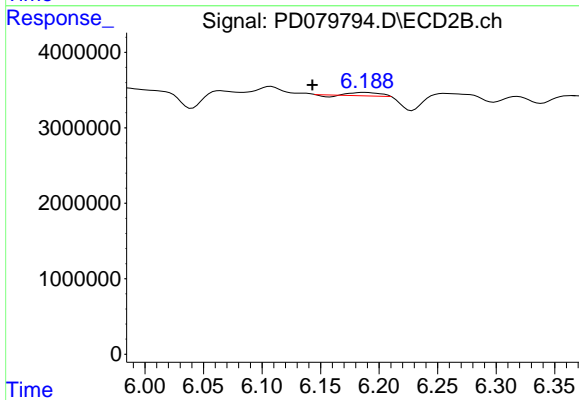
R.T.: 6.065 min
 Delta R.T.: -0.005 min
 Response: 1096726
 Conc: 0.46 ng/ml



#18 Endrin aldehyde

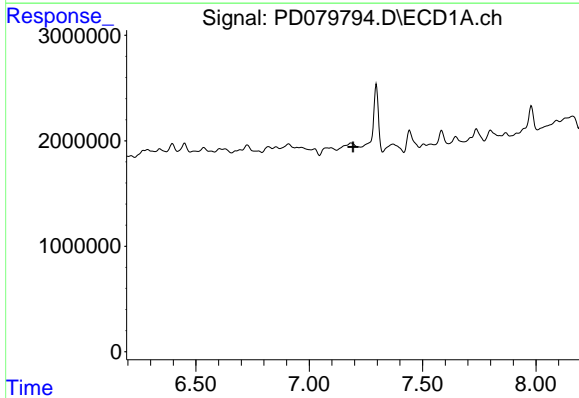
R.T.: 0.000 min
Exp R.T. : 6.959 min
Response: 0
Conc: N.D.

Instrument :
ECD_D
ClientSampleId :



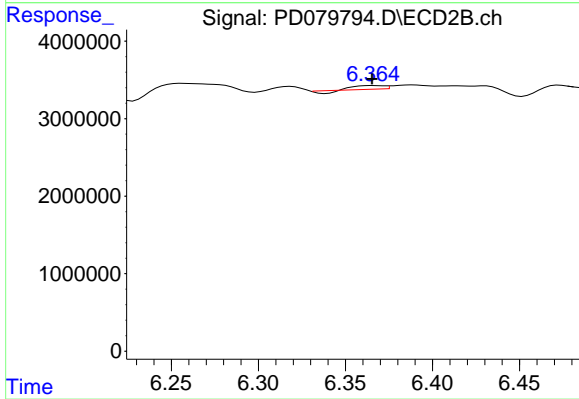
#18 Endrin aldehyde

R.T.: 6.188 min
Delta R.T.: 0.045 min
Response: 664159
Conc: 0.33 ng/ml



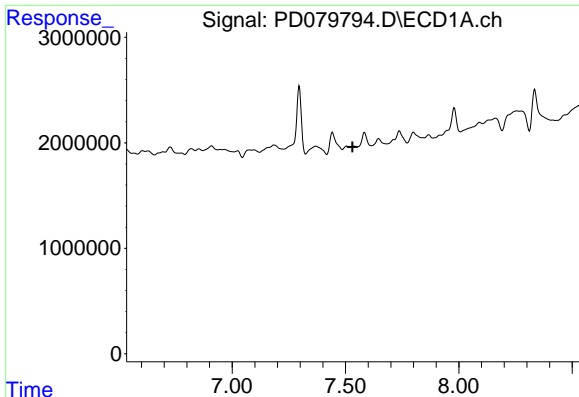
#19 Endosulfan Sulfate

R.T.: 0.000 min
Exp R.T. : 7.193 min
Response: 0
Conc: N.D.



#19 Endosulfan Sulfate

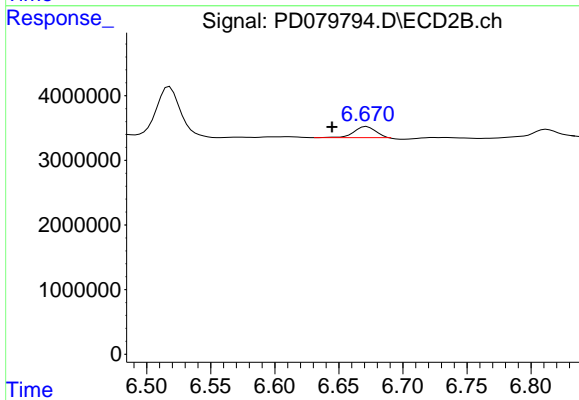
R.T.: 6.366 min
Delta R.T.: 0.000 min
Response: 381921
Conc: 0.15 ng/ml



#20 Methoxychlor

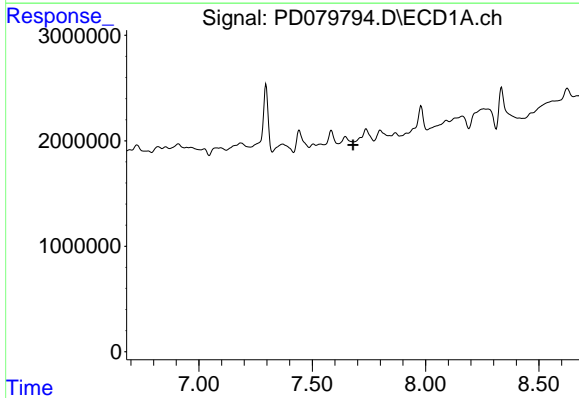
R.T.: 0.000 min
 Exp R.T. : 7.532 min
 Response: 0
 Conc: N.D.

Instrument :
 ECD_D
 ClientSampleId :



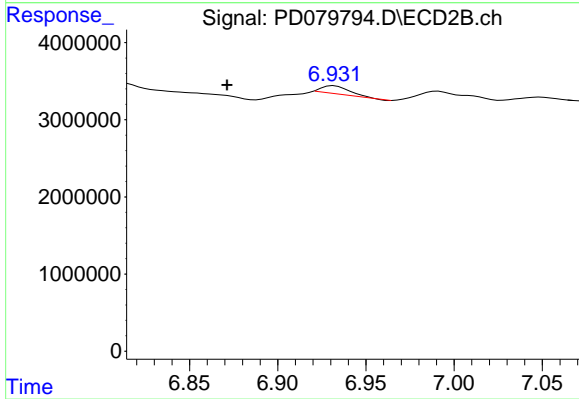
#20 Methoxychlor

R.T.: 6.672 min
 Delta R.T.: 0.027 min
 Response: 2009703
 Conc: 1.56 ng/ml



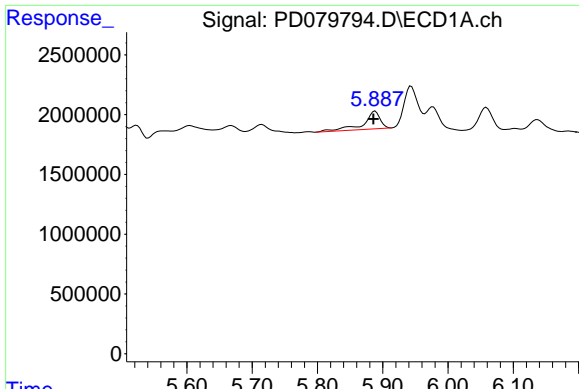
#21 Endrin ketone

R.T.: 0.000 min
 Exp R.T. : 7.681 min
 Response: 0
 Conc: N.D.



#21 Endrin ketone

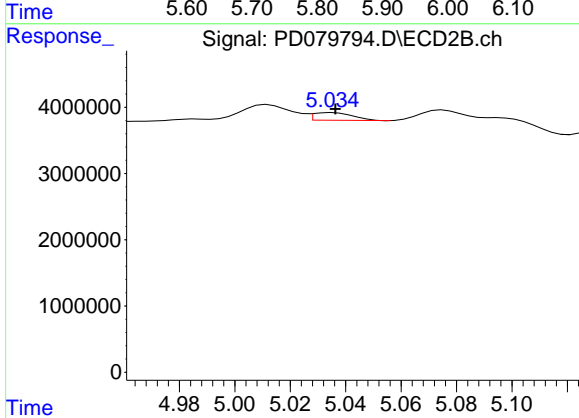
R.T.: 6.932 min
 Delta R.T.: 0.061 min
 Response: 1130603
 Conc: 0.40 ng/ml



#22 Toxaphene-1

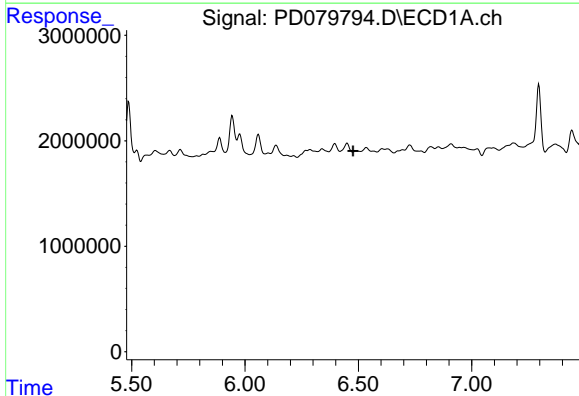
R.T.: 5.888 min
 Delta R.T.: 0.003 min
 Response: 2624512
 Conc: 382.73 ng/ml

Instrument :
 ECD_D
 ClientSampleId :



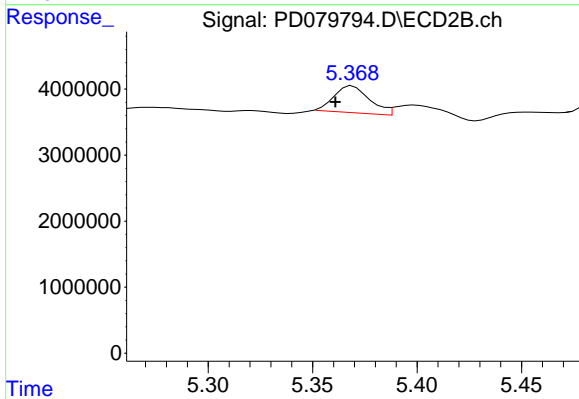
#22 Toxaphene-1

R.T.: 5.036 min
 Delta R.T.: 0.000 min
 Response: 1150807
 Conc: 68.82 ng/ml



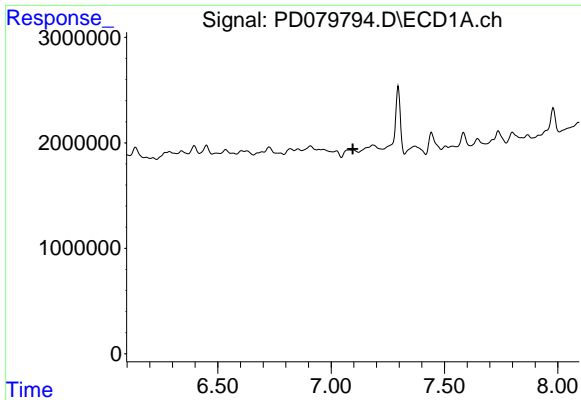
#23 Toxaphene-2

R.T.: 0.000 min
 Exp R.T. : 6.477 min
 Response: 0
 Conc: N.D.



#23 Toxaphene-2

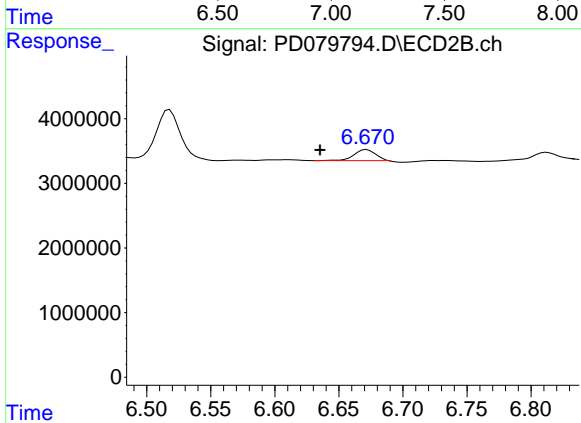
R.T.: 5.369 min
 Delta R.T.: 0.008 min
 Response: 4816270
 Conc: 286.61 ng/ml



#24 Toxaphene-3

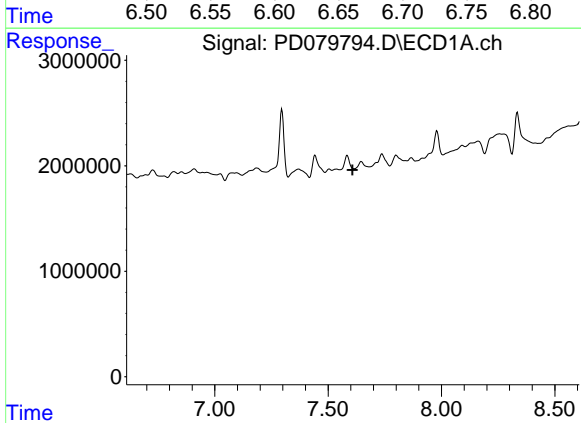
R.T.: 0.000 min
 Exp R.T.: 7.096 min
 Response: 0
 Conc: N.D.

Instrument :
 ECD_D
 ClientSampleId :



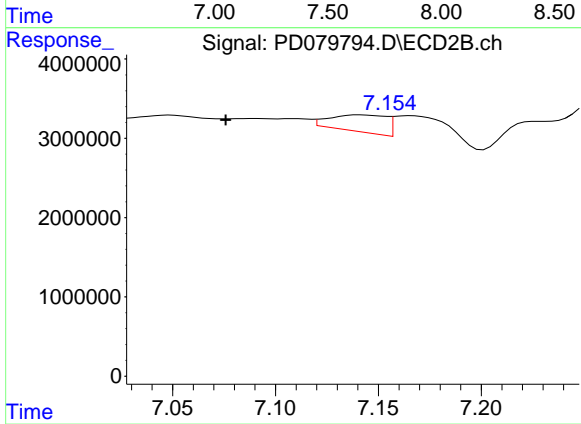
#24 Toxaphene-3

R.T.: 6.672 min
 Delta R.T.: 0.037 min
 Response: 2009703
 Conc: 34.90 ng/ml



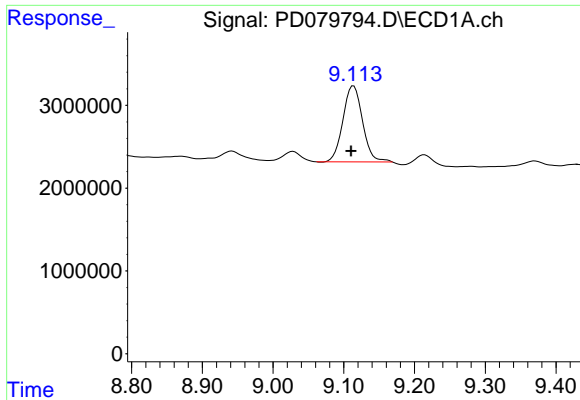
#26 Toxaphene-5

R.T.: 0.000 min
 Exp R.T.: 7.608 min
 Response: 0
 Conc: N.D.



#26 Toxaphene-5

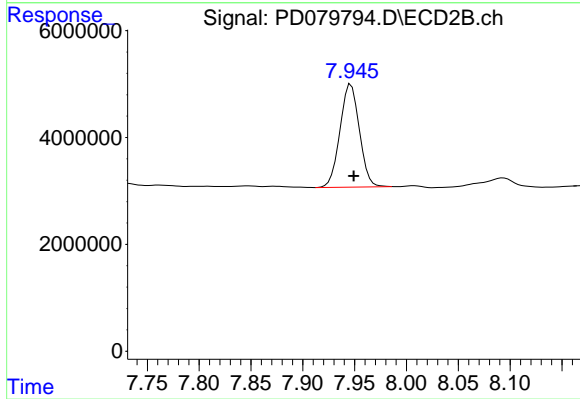
R.T.: 7.141 min
 Delta R.T.: 0.065 min
 Response: 4085200
 Conc: 122.35 ng/ml



#27 Decachlorobiphenyl

R.T.: 9.114 min
Delta R.T.: 0.003 min
Response: 17688735
Conc: 9.97 ng/ml

Instrument :
ECD_D
ClientSampleId :



#27 Decachlorobiphenyl

R.T.: 7.946 min
Delta R.T.: -0.003 min
Response: 25106346
Conc: 10.52 ng/ml