

Data Path : Z:\pestpcbsrv\HPCHEM1\ECD_D\Data\PD112124\
 Data File : PD086868.D
 Signal(s) : Signal #1: ECD1A.ch Signal #2: ECD2B.ch
 Acq On : 20 Nov 2024 20:53
 Operator : AR\AJ
 Sample : P4872-21
 Misc :
 ALS Vial : 28 Sample Multiplier: 1

Instrument :
 ECD_D
 ClientSampleId :

Integration File signal 1: autoint1.e
 Integration File signal 2: autoint2.e
 Quant Time: Nov 21 00:21:51 2024
 Quant Method : Z:\pestpcbsrv\HPCHEM1\ECD_D\Method\PD112024CLP.M
 Quant Title : GC Extractables
 QLast Update : Wed Nov 20 02:52:29 2024
 Response via : Initial Calibration
 Integrator: ChemStation

Volume Inj. : 1 µl
 Signal #1 Phase : ZB-MR2 Signal #2 Phase: ZB-MR2
 Signal #1 Info : 30M x 0.32mm x0.5 Signal #2 Info : 30M x 0.32mm x 0.25µm

	Compound	RT#1	RT#2	Resp#1	Resp#2	ng/ml	ng/ml

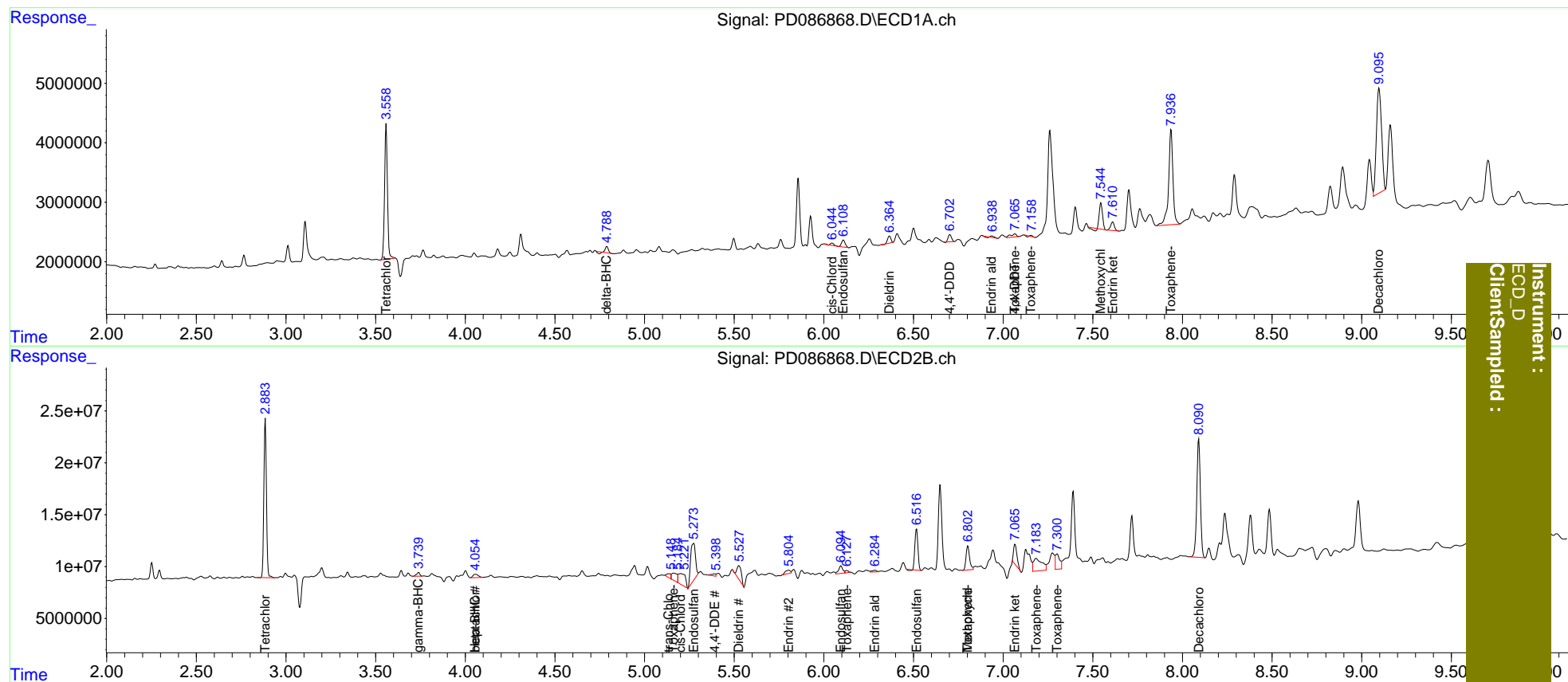
System Monitoring Compounds							
1)	SA Tetrachlo...	3.559	2.885	25537025	153.9E6	13.887	13.332
27)	SA Decachlor...	9.097	8.091	35536477	159.7E6	13.347	12.533
Target Compounds							
2)	A alpha-BHC	0.000	3.389	0	414562	N.D.	<MDL
3)	MA gamma-BHC...	0.000	3.740	0	4405150	N.D.	0.264
4)	MA Heptachlor	4.956	4.057f	26968	6630642	<MDL	0.385 #
5)	MB Aldrin	5.265	4.400	265986	665041	<MDL	<MDL #
6)	B beta-BHC	0.000	4.057	0	6630642	N.D.	0.839
7)	B delta-BHC	4.790	4.258	902083	1576119	0.248	<MDL #
9)	A Endosulfan I	6.109	5.275	1654461	67491860	0.556	4.663 #
10)	B trans-Chl...	0.000	5.137	0	5883947	N.D.	0.356
11)	B cis-Chlor...	6.046	5.204	544625	30333606	0.167	1.893 #
12)	B 4,4'-DDE	0.000	5.391	0	3089511	N.D.	0.203
13)	MA Dieldrin	6.366	5.526	1497257	23214486	0.457	1.519 #
14)	MA Endrin	6.587	5.805	15839	6348603	<MDL	0.460 #
15)	B Endosulfa...	6.829	6.096	-911090	11500526	N.D.	0.824
16)	A 4,4'-DDD	6.703	5.938	1567064	264168	0.661	<MDL #
17)	MA 4,4'-DDT	7.066	6.198	1245712	1098790	0.503	<MDL #
18)	B Endrin al...	6.937	6.286	266314	3083244	0.121	0.287 #
19)	B Endosulfa...	7.156	6.517	7317	45591725	<MDL	3.398 #
20)	A Methoxychlor	7.546f	6.803	5206360	32045344	3.857	5.543 #
21)	B Endrin ke...	7.611	7.067f	2112140	26010958	0.692	1.741 #
22)	Toxaphene-1	0.000	5.163	0	15406231	N.D.	188.836
23)	Toxaphene-2	6.501f	6.128	-823778	2800576	N.D.	31.240
24)	Toxaphene-3	7.066	6.803	1245712	32045344	15.380	108.528 #
25)	Toxaphene-4	7.156	7.184	7317	40107679	0.121	194.022 #
26)	Toxaphene-5	7.937	7.301f	27086787	24874737	614.055	158.463 #

(f)=RT Delta > 1/2 Window (#)=Amounts differ by > 25% (m)=manual int.

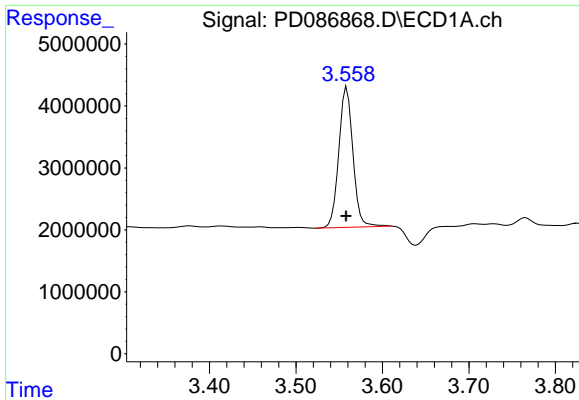
Data Path : Z:\pestpcbsrv\HPCHEM1\ECD_D\Data\PD112124\
 Data File : PD086868.D
 Signal(s) : Signal #1: ECD1A.ch Signal #2: ECD2B.ch
 Acq On : 20 Nov 2024 20:53
 Operator : AR\AJ
 Sample : P4872-21
 Misc :
 ALS Vial : 28 Sample Multiplier: 1

Integration File signal 1: autoint1.e
 Integration File signal 2: autoint2.e
 Quant Time: Nov 21 00:21:51 2024
 Quant Method : Z:\pestpcbsrv\HPCHEM1\ECD_D\Method\PD112024CLP.M
 Quant Title : GC Extractables
 QLast Update : Wed Nov 20 02:52:29 2024
 Response via : Initial Calibration
 Integrator: ChemStation

Volume Inj. : 1 µl
 Signal #1 Phase : ZB-MR1 Signal #2 Phase: ZB-MR2
 Signal #1 Info : 30M x 0.32mm x0.5 Signal #2 Info : 30M x 0.32mm x 0.25µm



Instrument : ECD_D
 Client/Sampled :

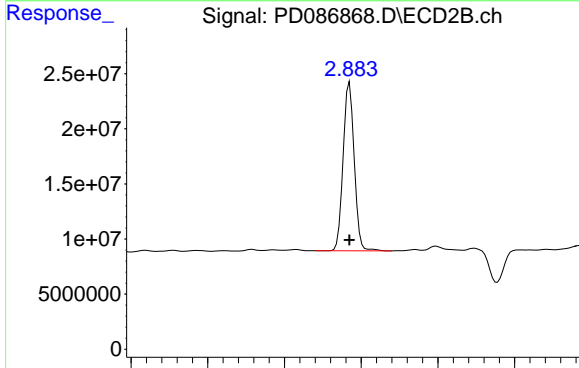


#1 Tetrachloro-m-xylene

R.T.: 3.559 min
 Delta R.T.: 0.000 min
 Response: 25537025
 Conc: 13.89 ng/ml

Instrument :
 ECD_D
 ClientSampleId :

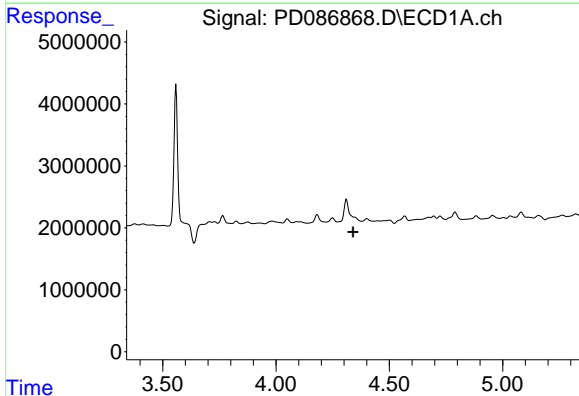
Time 3.40 3.50 3.60 3.70 3.80



#1 Tetrachloro-m-xylene

R.T.: 2.885 min
 Delta R.T.: 0.000 min
 Response: 153864005
 Conc: 13.33 ng/ml

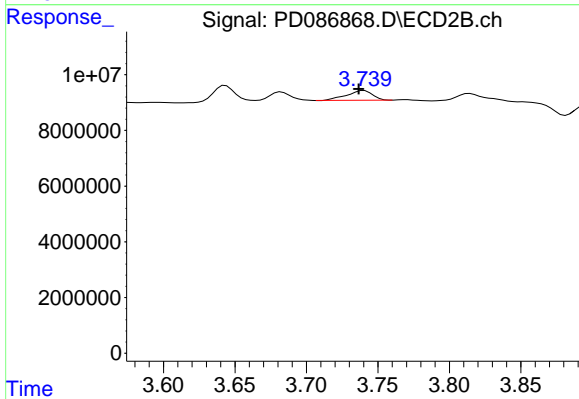
Time 2.60 2.70 2.80 2.90 3.00 3.10



#3 gamma-BHC (Lindane)

R.T.: 0.000 min
 Exp R.T. : 4.340 min
 Response: 0
 Conc: N.D.

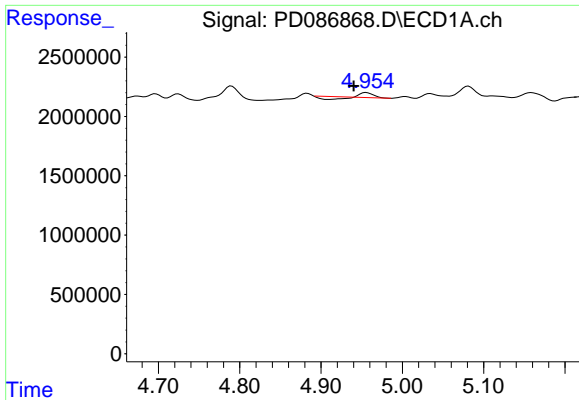
Time 3.50 4.00 4.50 5.00



#3 gamma-BHC (Lindane)

R.T.: 3.740 min
 Delta R.T.: 0.004 min
 Response: 4405150
 Conc: 0.26 ng/ml

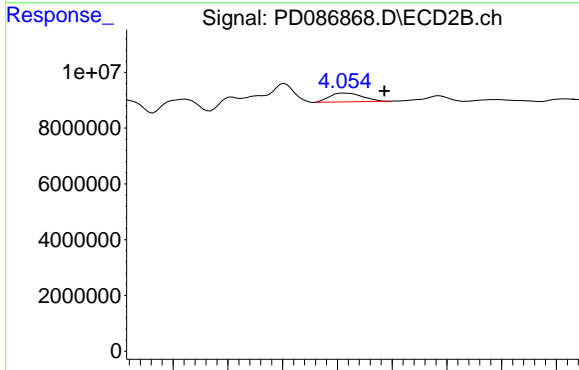
Time 3.60 3.65 3.70 3.75 3.80 3.85



#4 Heptachlor

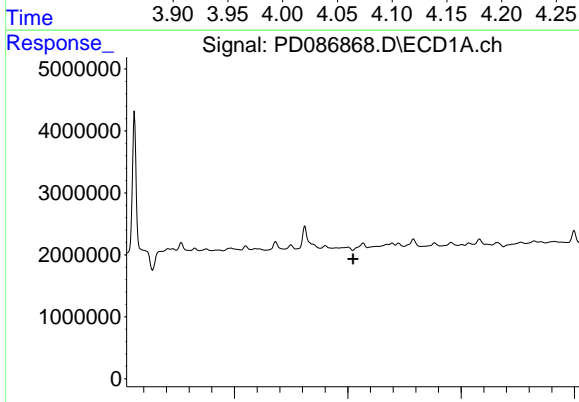
R.T.: 4.956 min
 Delta R.T.: 0.016 min
 Response: 26968
 Conc: N.D.

Instrument :
 ECD_D
 ClientSampleId :



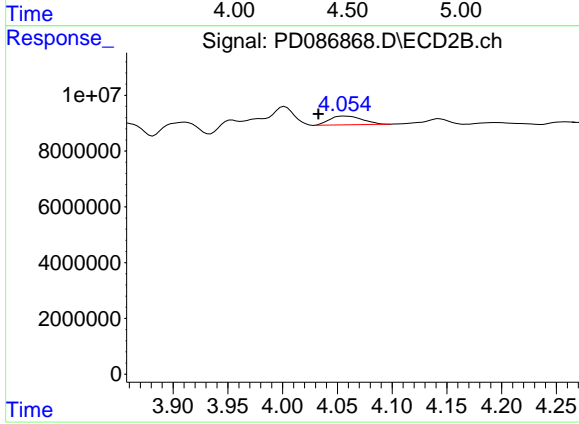
#4 Heptachlor

R.T.: 4.057 min
 Delta R.T.: -0.037 min
 Response: 6630642
 Conc: 0.39 ng/ml



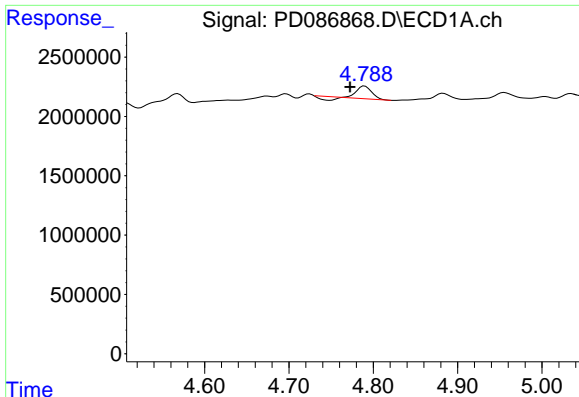
#6 beta-BHC

R.T.: 0.000 min
 Exp R.T. : 4.524 min
 Response: 0
 Conc: N.D.



#6 beta-BHC

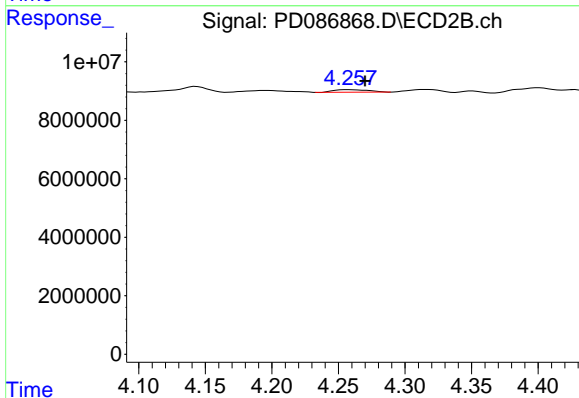
R.T.: 4.057 min
 Delta R.T.: 0.024 min
 Response: 6630642
 Conc: 0.84 ng/ml



#7 delta-BHC

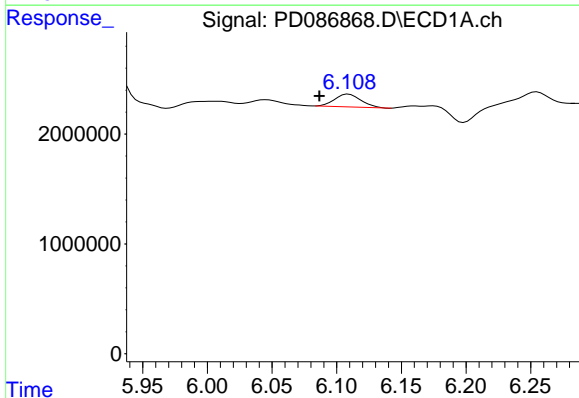
R.T.: 4.790 min
 Delta R.T.: 0.018 min
 Response: 902083
 Conc: 0.25 ng/ml

Instrument :
 ECD_D
 ClientSampleId :



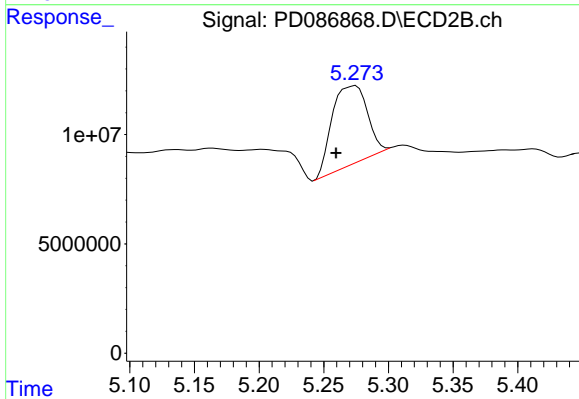
#7 delta-BHC

R.T.: 4.258 min
 Delta R.T.: -0.012 min
 Response: 1576119
 Conc: N.D.



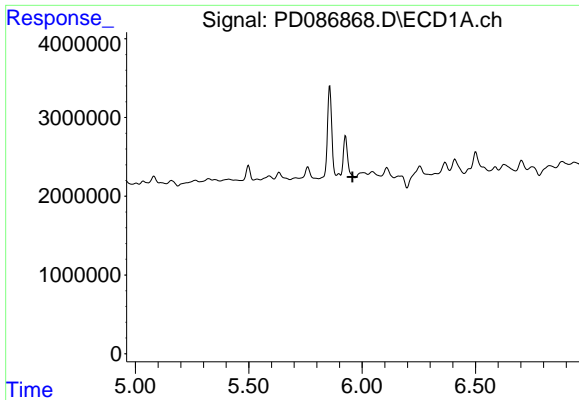
#9 Endosulfan I

R.T.: 6.109 min
 Delta R.T.: 0.023 min
 Response: 1654461
 Conc: 0.56 ng/ml



#9 Endosulfan I

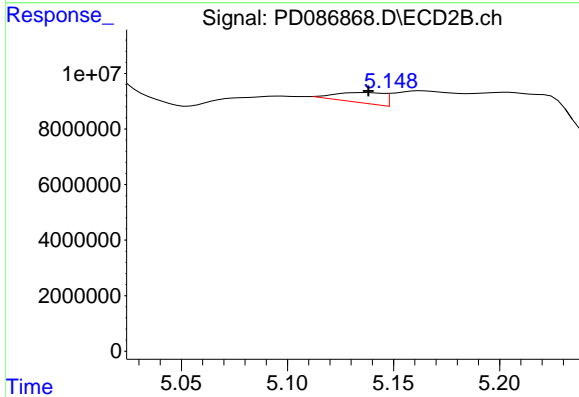
R.T.: 5.275 min
 Delta R.T.: 0.015 min
 Response: 67491860
 Conc: 4.66 ng/ml



#10 trans-Chlordane

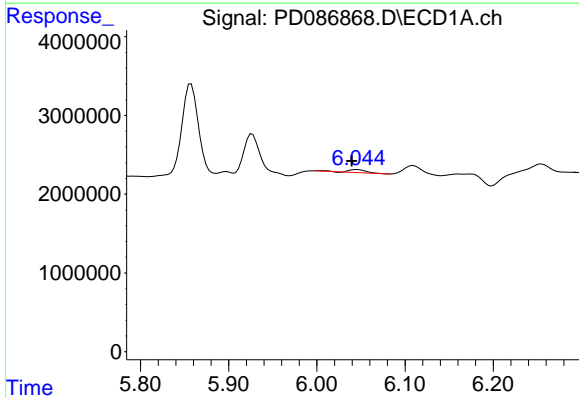
R.T.: 0.000 min
 Exp R.T.: 5.958 min
 Response: 0
 Conc: N.D.

Instrument :
 ECD_D
 ClientSampleId :



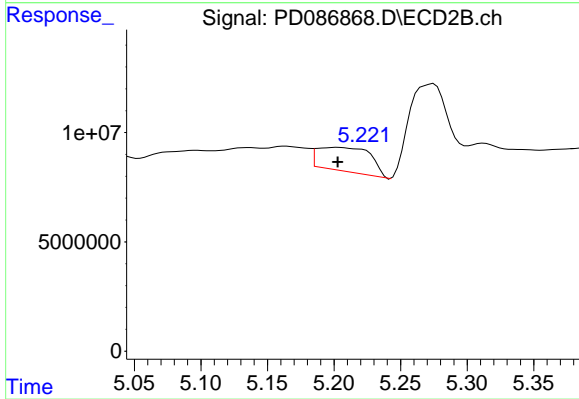
#10 trans-Chlordane

R.T.: 5.137 min
 Delta R.T.: -0.002 min
 Response: 5883947
 Conc: 0.36 ng/ml



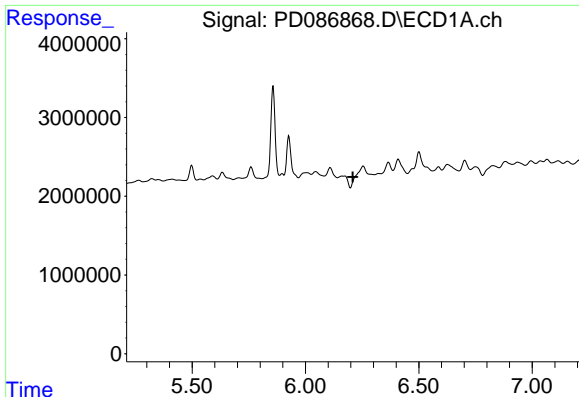
#11 cis-Chlordane

R.T.: 6.046 min
 Delta R.T.: 0.006 min
 Response: 544625
 Conc: 0.17 ng/ml



#11 cis-Chlordane

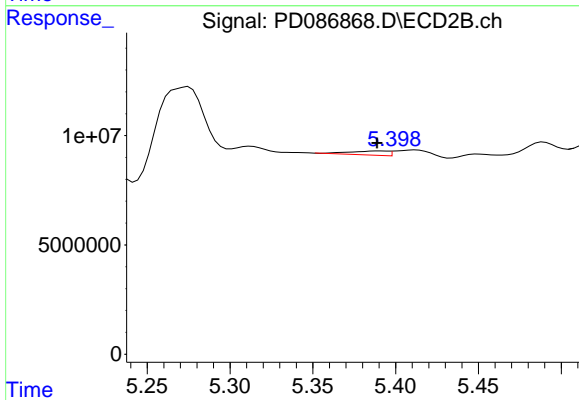
R.T.: 5.204 min
 Delta R.T.: 0.000 min
 Response: 30333606
 Conc: 1.89 ng/ml



#12 4,4'-DDE

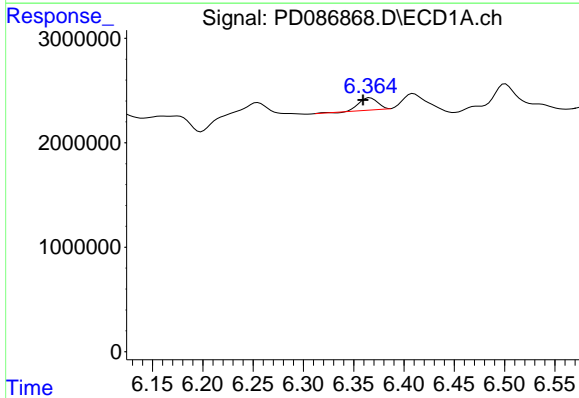
R.T.: 0.000 min
 Exp R.T.: 6.208 min
 Response: 0
 Conc: N.D.

Instrument :
 ECD_D
 ClientSampleId :



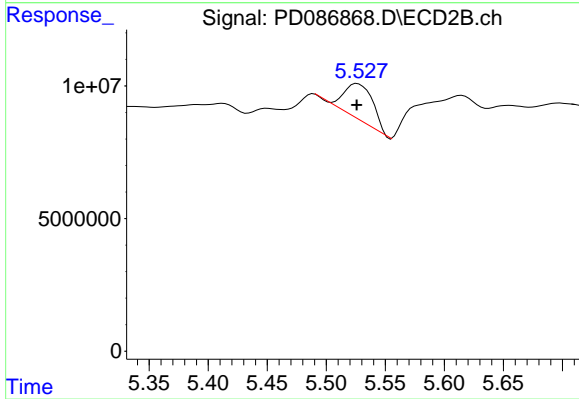
#12 4,4'-DDE

R.T.: 5.391 min
 Delta R.T.: 0.002 min
 Response: 3089511
 Conc: 0.20 ng/ml



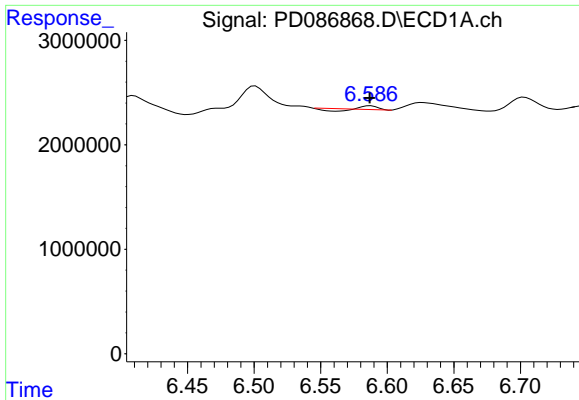
#13 Dieldrin

R.T.: 6.366 min
 Delta R.T.: 0.007 min
 Response: 1497257
 Conc: 0.46 ng/ml



#13 Dieldrin

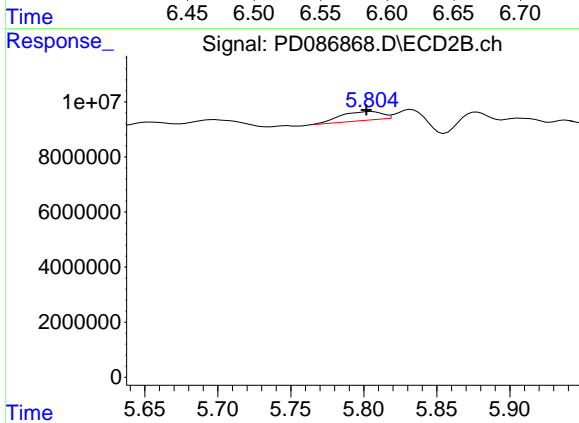
R.T.: 5.526 min
 Delta R.T.: 0.000 min
 Response: 23214486
 Conc: 1.52 ng/ml



#14 Endrin

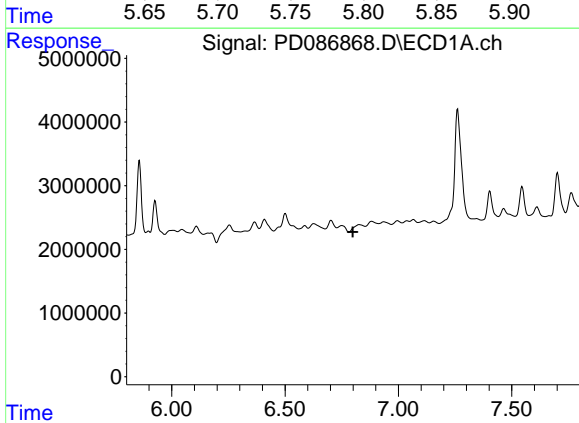
R.T.: 6.587 min
 Delta R.T.: 0.000 min
 Response: 15839
 Conc: N.D.

Instrument :
 ECD_D
 ClientSampleId :



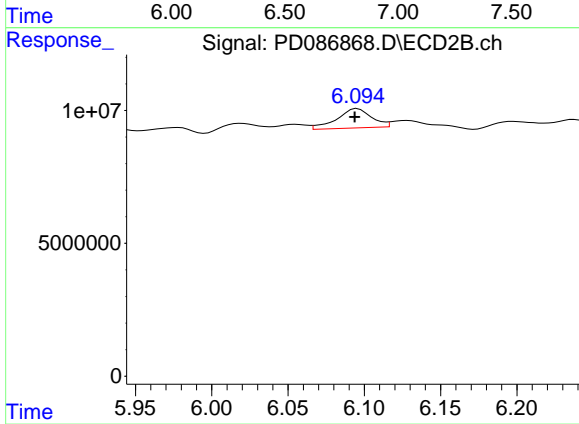
#14 Endrin

R.T.: 5.805 min
 Delta R.T.: 0.003 min
 Response: 6348603
 Conc: 0.46 ng/ml



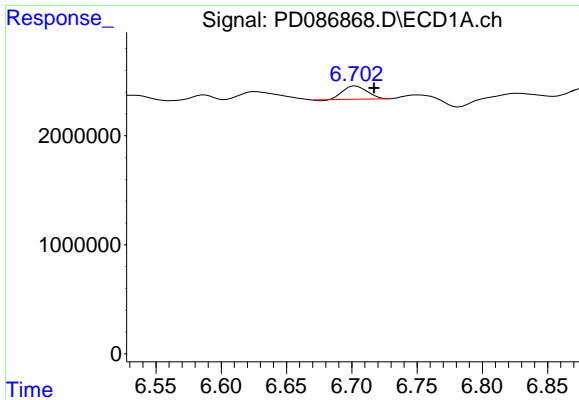
#15 Endosulfan II

R.T.: 6.829 min
 Delta R.T.: 0.030 min
 Response: -911090
 Conc: N.D.



#15 Endosulfan II

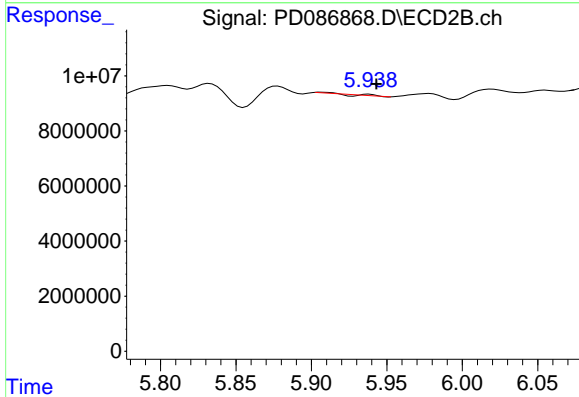
R.T.: 6.096 min
 Delta R.T.: 0.002 min
 Response: 11500526
 Conc: 0.82 ng/ml



#16 4,4'-DDD

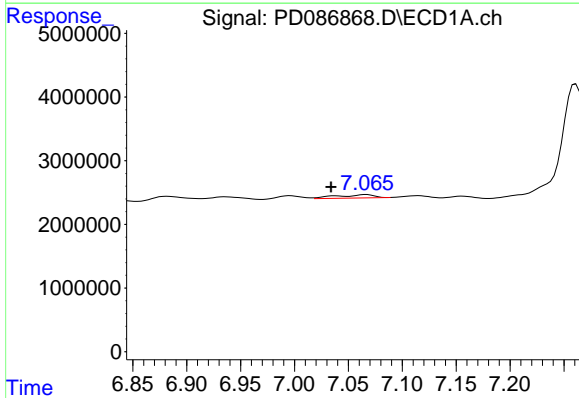
R.T.: 6.703 min
 Delta R.T.: -0.014 min
 Response: 1567064
 Conc: 0.66 ng/ml

Instrument :
 ECD_D
 ClientSampleId :



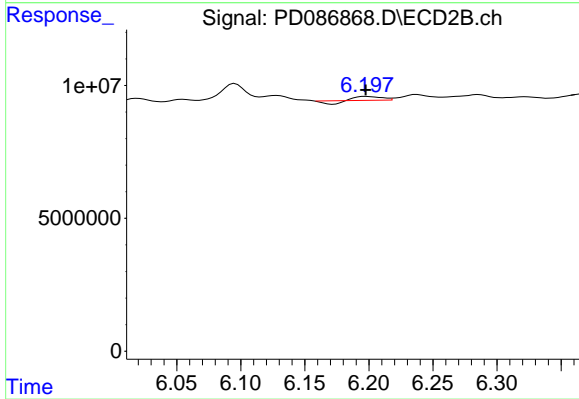
#16 4,4'-DDD

R.T.: 5.938 min
 Delta R.T.: -0.005 min
 Response: 264168
 Conc: N.D.



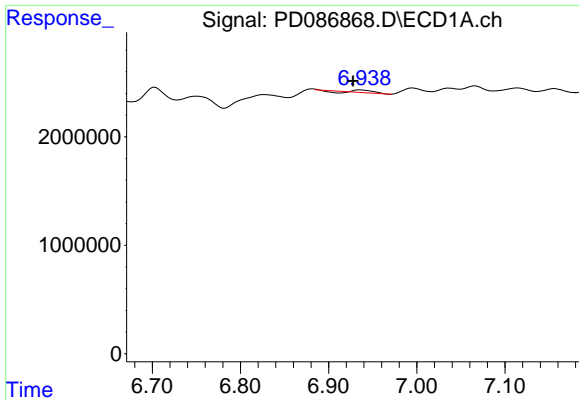
#17 4,4'-DDT

R.T.: 7.066 min
 Delta R.T.: 0.032 min
 Response: 1245712
 Conc: 0.50 ng/ml



#17 4,4'-DDT

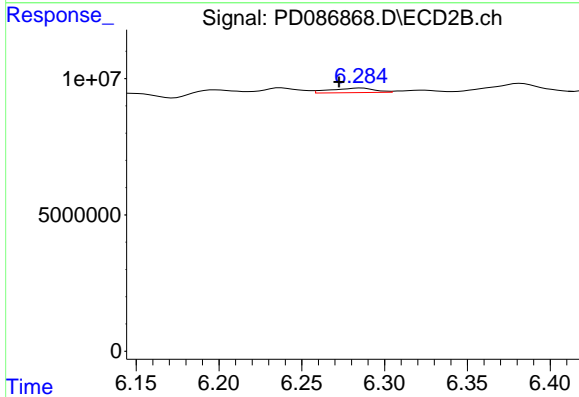
R.T.: 6.198 min
 Delta R.T.: 0.000 min
 Response: 1098790
 Conc: N.D.



#18 Endrin aldehyde

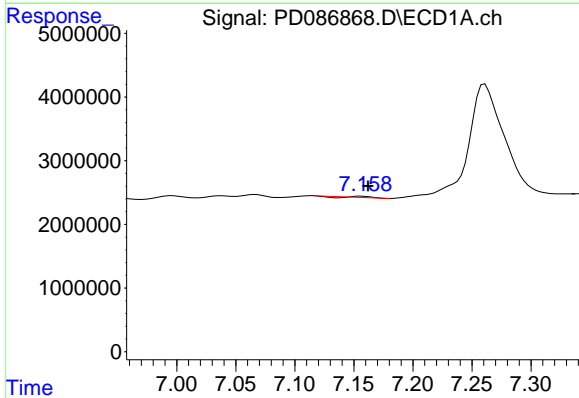
R.T.: 6.937 min
 Delta R.T.: 0.009 min
 Response: 266314
 Conc: 0.12 ng/ml

Instrument :
 ECD_D
 ClientSampleId :



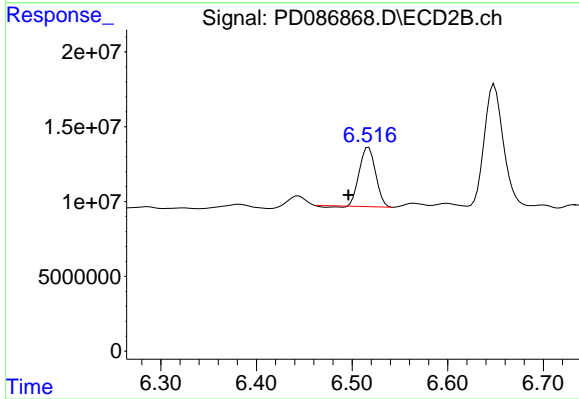
#18 Endrin aldehyde

R.T.: 6.286 min
 Delta R.T.: 0.013 min
 Response: 3083244
 Conc: 0.29 ng/ml



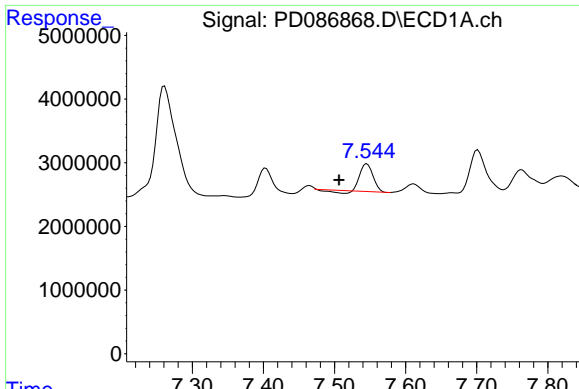
#19 Endosulfan Sulfate

R.T.: 7.156 min
 Delta R.T.: -0.006 min
 Response: 7317
 Conc: N.D.



#19 Endosulfan Sulfate

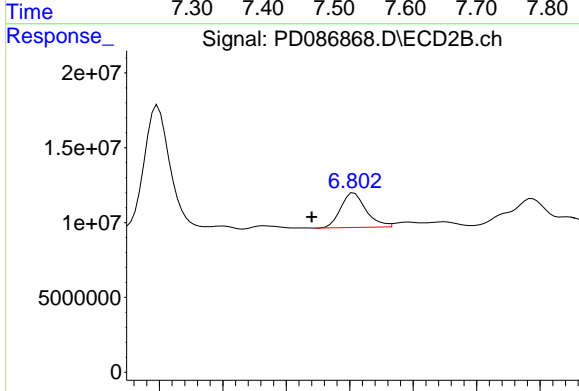
R.T.: 6.517 min
 Delta R.T.: 0.021 min
 Response: 45591725
 Conc: 3.40 ng/ml



#20 Methoxychlor

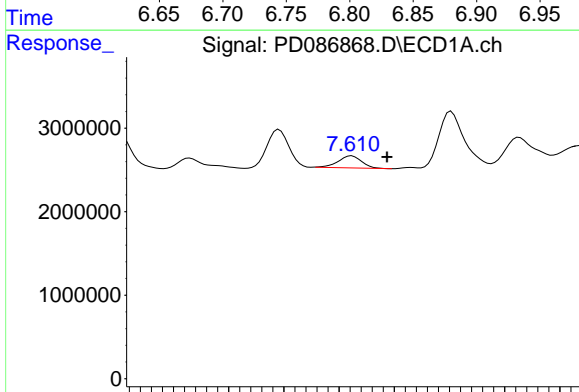
R.T.: 7.546 min
 Delta R.T.: 0.040 min
 Response: 5206360
 Conc: 3.86 ng/ml

Instrument :
 ECD_D
 ClientSampleId :



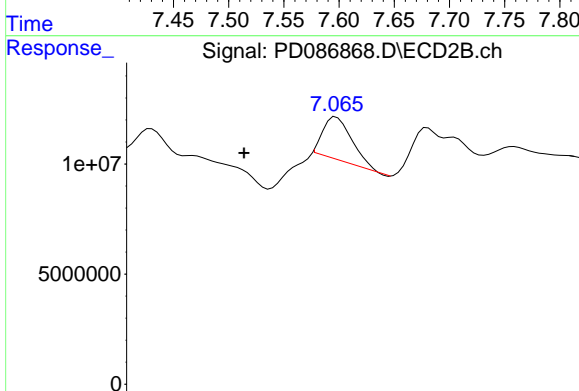
#20 Methoxychlor

R.T.: 6.803 min
 Delta R.T.: 0.033 min
 Response: 32045344
 Conc: 5.54 ng/ml



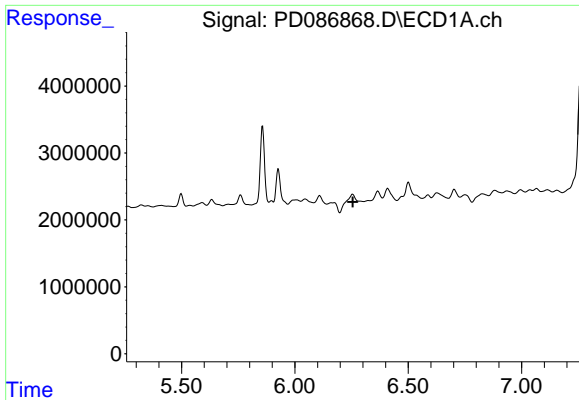
#21 Endrin ketone

R.T.: 7.611 min
 Delta R.T.: -0.032 min
 Response: 2112140
 Conc: 0.69 ng/ml



#21 Endrin ketone

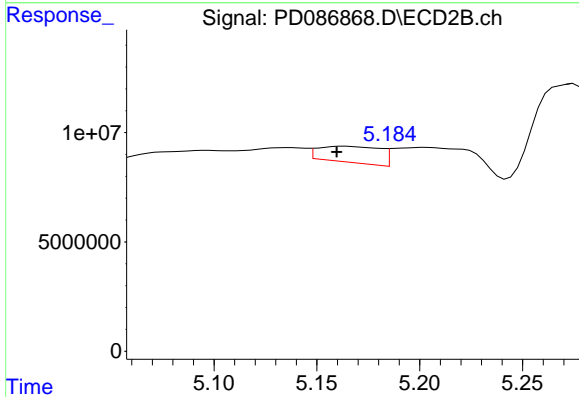
R.T.: 7.067 min
 Delta R.T.: 0.061 min
 Response: 26010958
 Conc: 1.74 ng/ml



#22 Toxaphene-1

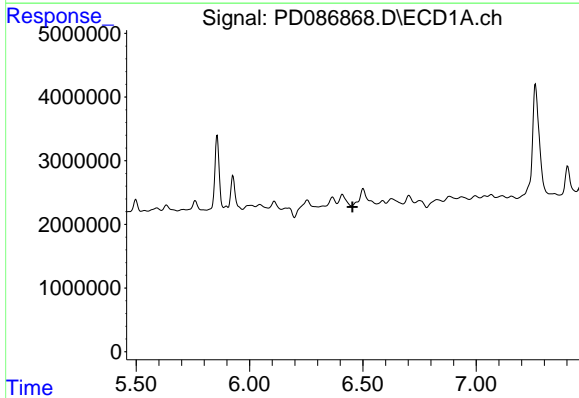
R.T.: 0.000 min
 Exp R.T.: 6.255 min
 Response: 0
 Conc: N.D.

Instrument :
 ECD_D
 ClientSampleId :



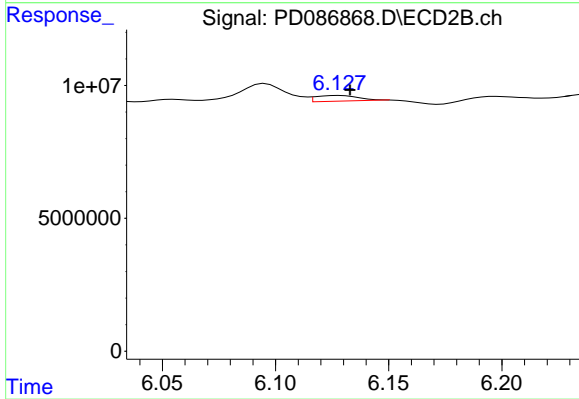
#22 Toxaphene-1

R.T.: 5.163 min
 Delta R.T.: 0.004 min
 Response: 15406231
 Conc: 188.84 ng/ml



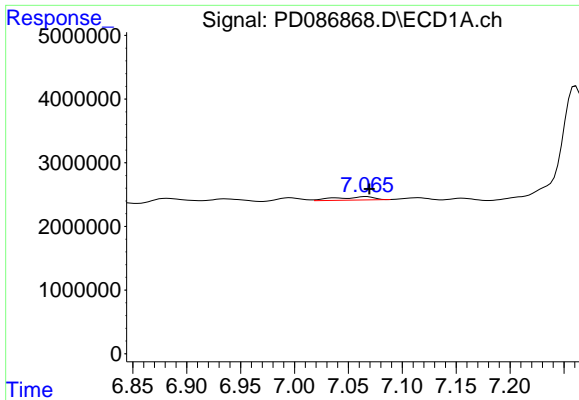
#23 Toxaphene-2

R.T.: 6.501 min
 Delta R.T.: 0.047 min
 Response: -823778
 Conc: N.D.



#23 Toxaphene-2

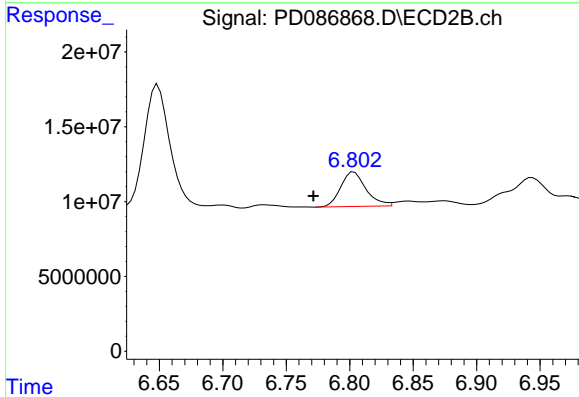
R.T.: 6.128 min
 Delta R.T.: -0.005 min
 Response: 2800576
 Conc: 31.24 ng/ml



#24 Toxaphene-3

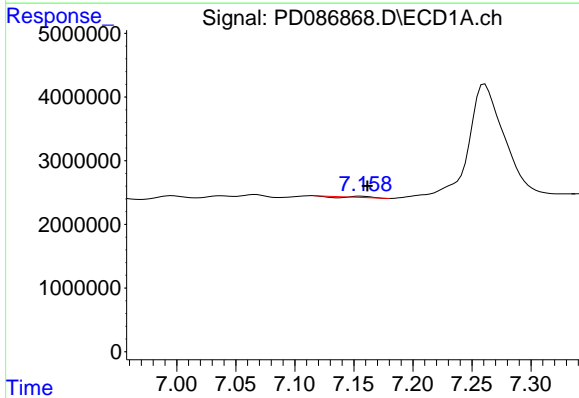
R.T.: 7.066 min
 Delta R.T.: -0.003 min
 Response: 1245712
 Conc: 15.38 ng/ml

Instrument :
 ECD_D
 ClientSampleId :



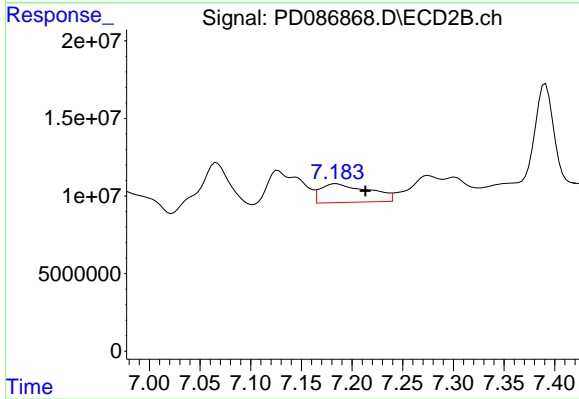
#24 Toxaphene-3

R.T.: 6.803 min
 Delta R.T.: 0.032 min
 Response: 32045344
 Conc: 108.53 ng/ml



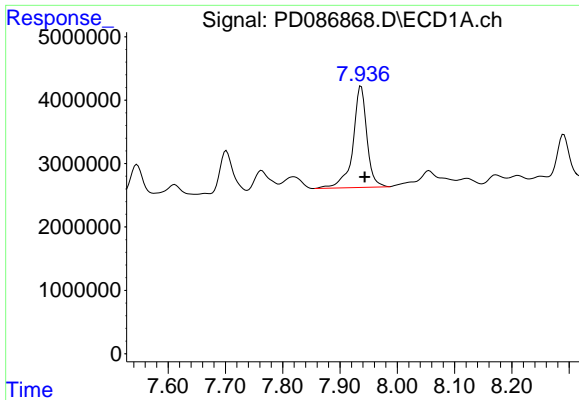
#25 Toxaphene-4

R.T.: 7.156 min
 Delta R.T.: -0.005 min
 Response: 7317
 Conc: 0.12 ng/ml



#25 Toxaphene-4

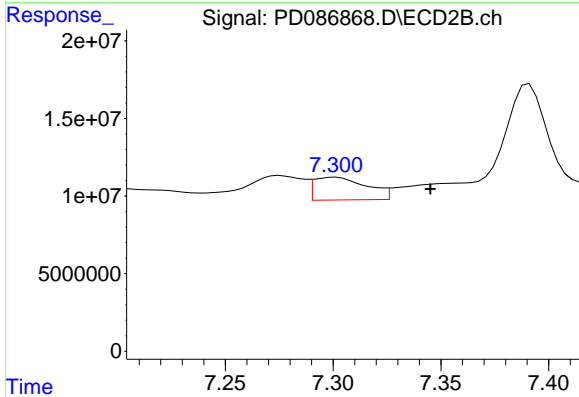
R.T.: 7.184 min
 Delta R.T.: -0.029 min
 Response: 40107679
 Conc: 194.02 ng/ml



#26 Toxaphene-5

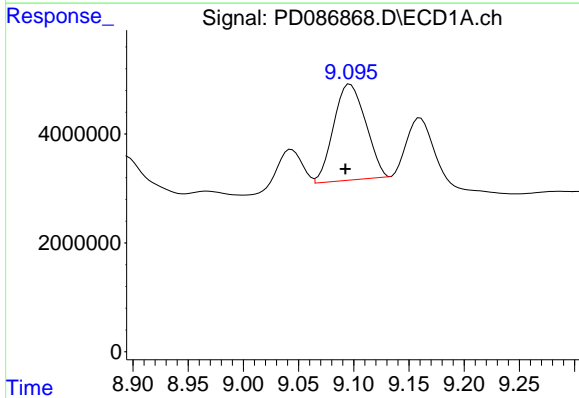
R.T.: 7.937 min
 Delta R.T.: -0.007 min
 Response: 27086787
 Conc: 614.05 ng/ml

Instrument :
 ECD_D
 ClientSampleId :



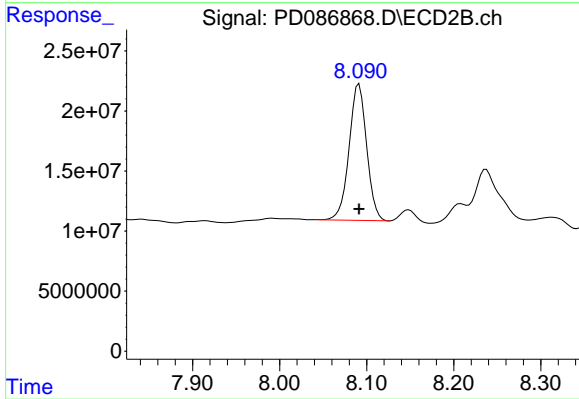
#26 Toxaphene-5

R.T.: 7.301 min
 Delta R.T.: -0.044 min
 Response: 24874737
 Conc: 158.46 ng/ml



#27 Decachlorobiphenyl

R.T.: 9.097 min
 Delta R.T.: 0.005 min
 Response: 35536477
 Conc: 13.35 ng/ml



#27 Decachlorobiphenyl

R.T.: 8.091 min
 Delta R.T.: 0.000 min
 Response: 159733702
 Conc: 12.53 ng/ml