

Data Path : Z:\pestpcbsrv\HPCHEM1\ECD\_D\Data\PD112219\  
 Data File : PD056177.D  
 Signal(s) : Signal #1: ECD1A.ch Signal #2: ECD2B.ch  
 Acq On : 22 Nov 2019 20:07  
 Operator : SG\AJ  
 Sample : K5889-12  
 Misc :  
 ALS Vial : 17 Sample Multiplier: 1

Instrument :  
 ECD\_D  
 ClientSampleId :  
 JLLR0

Integration File signal 1: autoint1.e  
 Integration File signal 2: autoint2.e  
 Quant Time: Nov 22 22:22:42 2019  
 Quant Method : Z:\pestpcbsrv\HPCHEM1\ECD\_D\Method\PD110319CLP.M  
 Quant Title : GC Extractables  
 QLast Update : Sat Nov 02 07:20:38 2019  
 Response via : Initial Calibration  
 Integrator: ChemStation

Volume Inj. : 1 µl  
 Signal #1 Phase : ZB-MR2 Signal #2 Phase: ZB-MR1  
 Signal #1 Info : 30M x 0.32mm x0.2 Signal #2 Info : 30M x 0.32mm x 0.50µm

	Compound	RT#1	RT#2	Resp#1	Resp#2	ng/ml	ng/ml
-----							
System Monitoring Compounds							
1)	SA Tetrachlo...	3.288	3.963	19352219	27497940	25.708	26.240
27)	SA Decachlor...	7.963	8.999	31839733	39413565	39.062	34.708
Target Compounds							
10)	B trans-Chl...	0.000	6.076	0	90760	N.D.	<MDL
11)	B cis-Chlor...	0.000	6.076f	0	90760	N.D.	<MDL
12)	B 4,4'-DDE	0.000	6.288	0	136576	N.D.	0.101
13)	MA Dieldrin	0.000	6.478f	0	127754	N.D.	<MDL
15)	B Endosulfa...	0.000	6.877	0	573288	N.D.	0.443
16)	A 4,4'-DDD	0.000	6.736f	0	392528	N.D.	0.352
17)	MA 4,4'-DDT	0.000	7.066	0	380899	N.D.	0.350
20)	A Methoxychlor	0.000	7.459f	0	128192	N.D.	0.206
21)	B Endrin ke...	0.000	7.737f	0	158646	N.D.	0.120
22)	Toxaphene-1	0.000	6.371	0	362796	N.D.	35.334
24)	Toxaphene-3	0.000	7.066	0	380899	N.D.	20.553
25)	Toxaphene-4	0.000	7.066	0	380899	N.D.	7.393
-----							

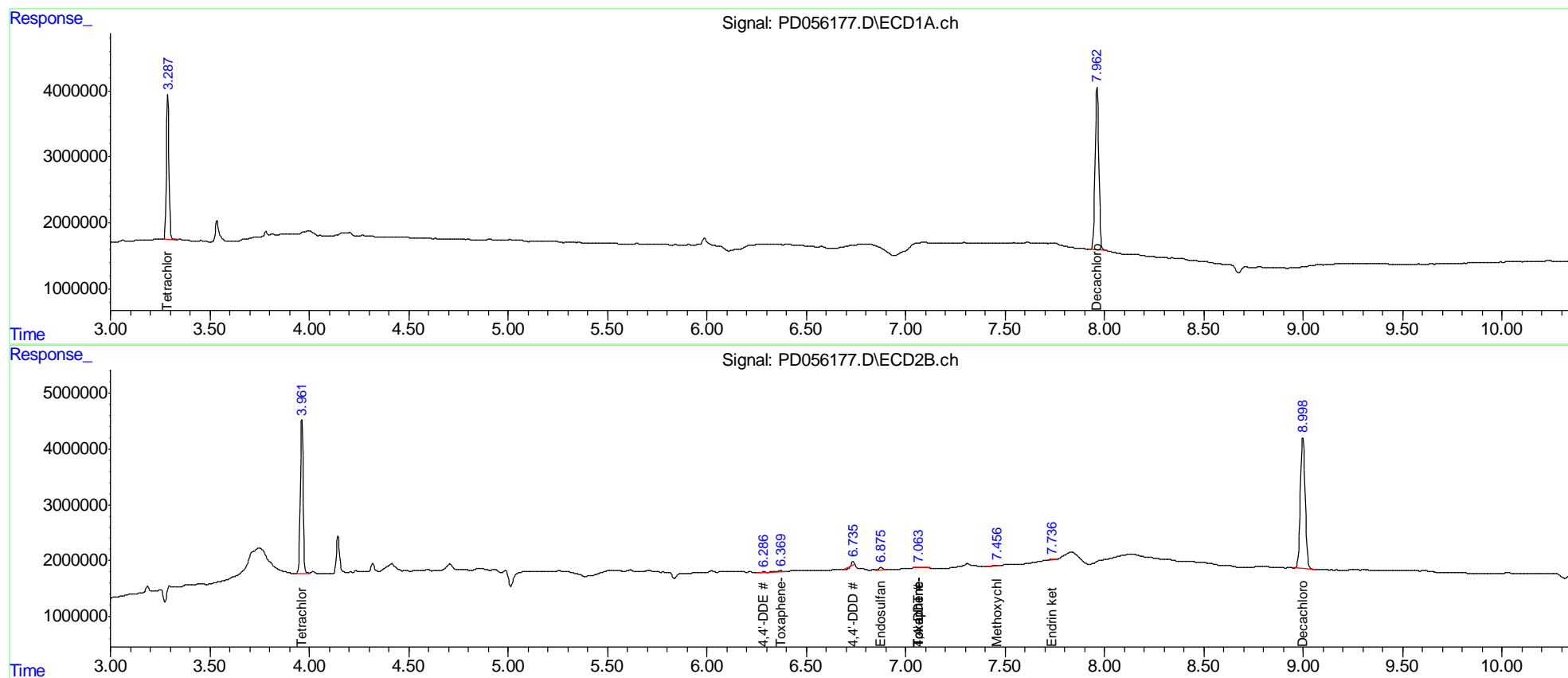
(f)=RT Delta > 1/2 Window (#)=Amounts differ by > 25% (m)=manual int.

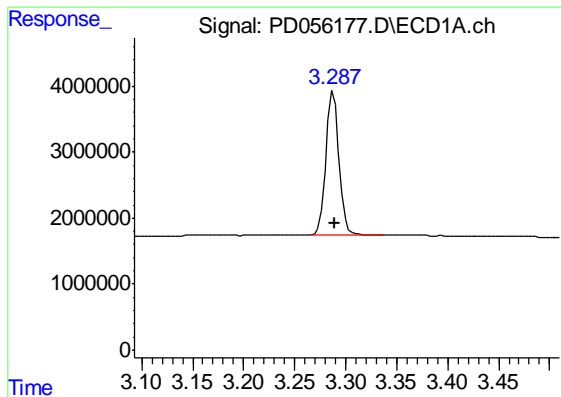
Data Path : Z:\pestpcbsrv\HPCHEM1\ECD\_D\Data\PD112219\  
 Data File : PD056177.D  
 Signal(s) : Signal #1: ECD1A.ch Signal #2: ECD2B.ch  
 Acq On : 22 Nov 2019 20:07  
 Operator : SG\AJ  
 Sample : K5889-12  
 Misc :  
 ALS Vial : 17 Sample Multiplier: 1

Instrument :  
 ECD\_D  
 ClientSampleId :  
 JLLR0

Integration File signal 1: autoint1.e  
 Integration File signal 2: autoint2.e  
 Quant Time: Nov 22 22:22:42 2019  
 Quant Method : Z:\pestpcbsrv\HPCHEM1\ECD\_D\Method\PD110319CLP.M  
 Quant Title : GC Extractables  
 QLast Update : Sat Nov 02 07:20:38 2019  
 Response via : Initial Calibration  
 Integrator: ChemStation

Volume Inj. : 1 µl  
 Signal #1 Phase : ZB-MR2 Signal #2 Phase: ZB-MR1  
 Signal #1 Info : 30M x 0.32mm x0.2 Signal #2 Info : 30M x 0.32mm x 0.50µm

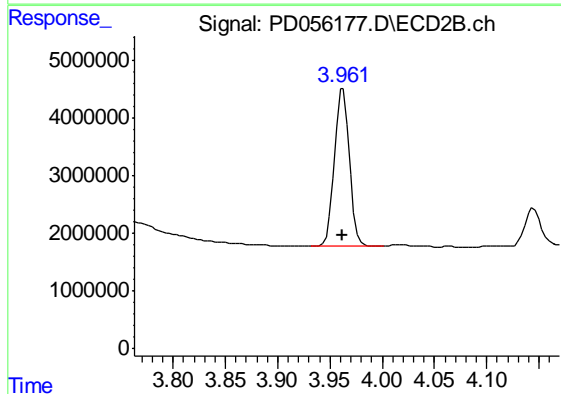




#1 Tetrachloro-m-xylene

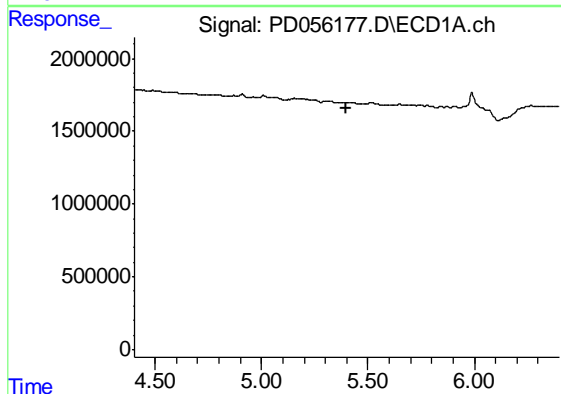
R.T.: 3.288 min  
 Delta R.T.: 0.000 min  
 Response: 19352219  
 Conc: 25.71 ng/ml

Instrument :  
 ECD\_D  
 ClientSampleId :  
 JLLR0



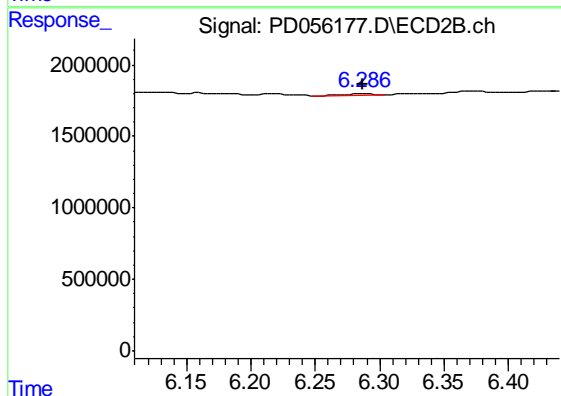
#1 Tetrachloro-m-xylene

R.T.: 3.963 min  
 Delta R.T.: 0.000 min  
 Response: 27497940  
 Conc: 26.24 ng/ml



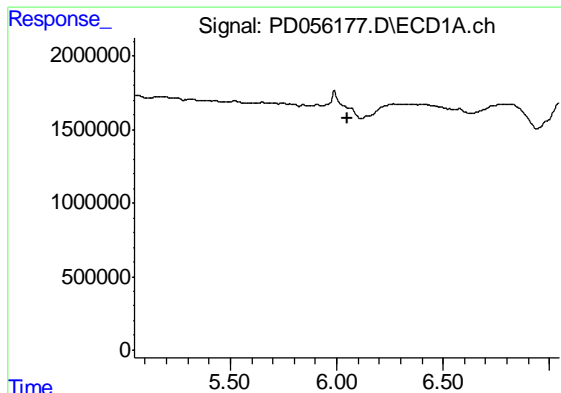
#12 4,4'-DDE

R.T.: 0.000 min  
 Exp R.T. : 5.400 min  
 Response: 0  
 Conc: N.D.



#12 4,4'-DDE

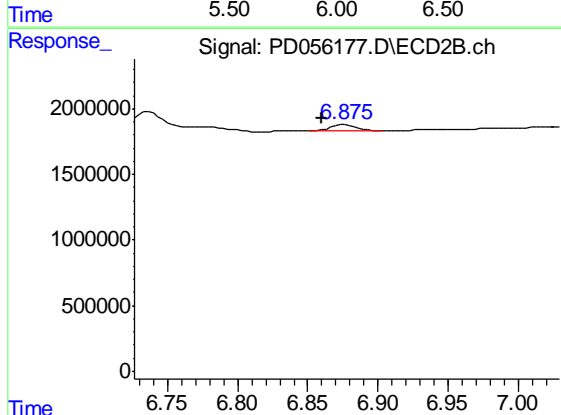
R.T.: 6.288 min  
 Delta R.T.: 0.000 min  
 Response: 136576  
 Conc: 0.10 ng/ml



#15 Endosulfan II

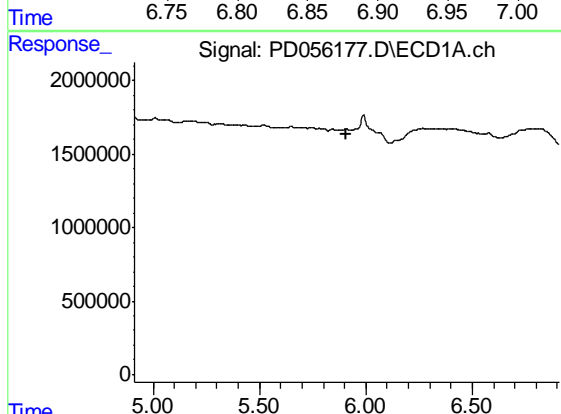
R.T.: 0.000 min  
 Exp R.T. : 6.049 min  
 Response: 0  
 Conc: N.D.

Instrument :  
 ECD\_D  
 ClientSampled :  
 JLLR0



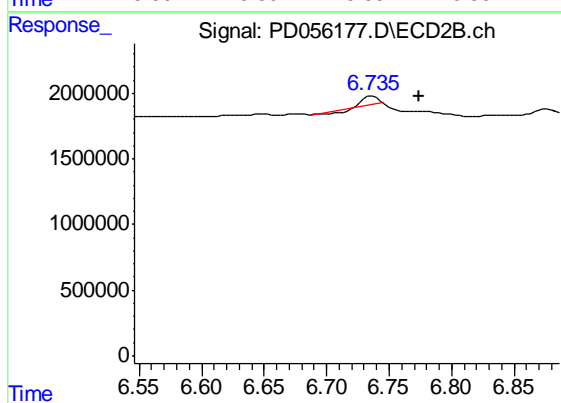
#15 Endosulfan II

R.T.: 6.877 min  
 Delta R.T.: 0.016 min  
 Response: 573288  
 Conc: 0.44 ng/ml



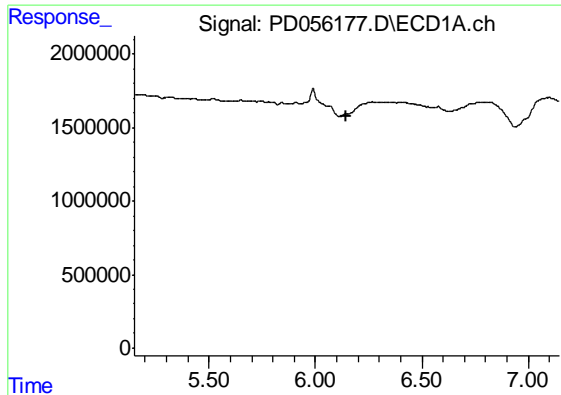
#16 4,4'-DDD

R.T.: 0.000 min  
 Exp R.T. : 5.911 min  
 Response: 0  
 Conc: N.D.



#16 4,4'-DDD

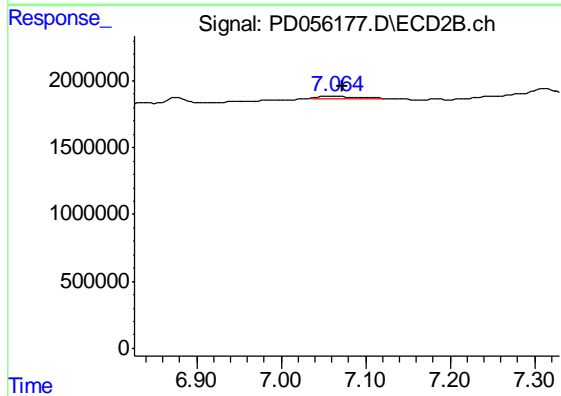
R.T.: 6.736 min  
 Delta R.T.: -0.038 min  
 Response: 392528  
 Conc: 0.35 ng/ml



#17 4,4'-DDT

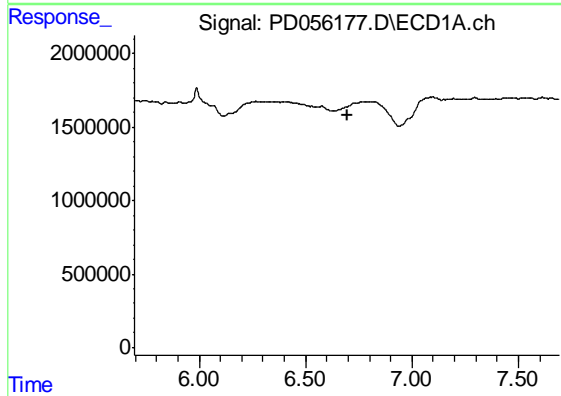
R.T.: 0.000 min  
 Exp R.T. : 6.146 min  
 Response: 0  
 Conc: N.D.

Instrument :  
 ECD\_D  
 ClientSampleId :  
 JLLR0



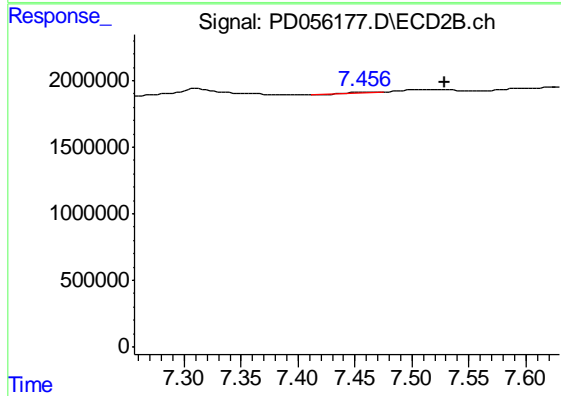
#17 4,4'-DDT

R.T.: 7.066 min  
 Delta R.T.: -0.006 min  
 Response: 380899  
 Conc: 0.35 ng/ml



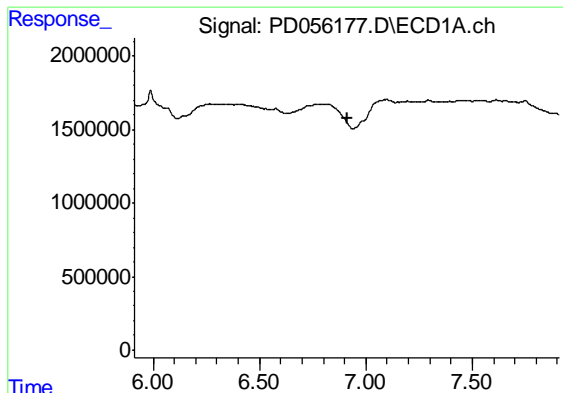
#20 Methoxychlor

R.T.: 0.000 min  
 Exp R.T. : 6.695 min  
 Response: 0  
 Conc: N.D.



#20 Methoxychlor

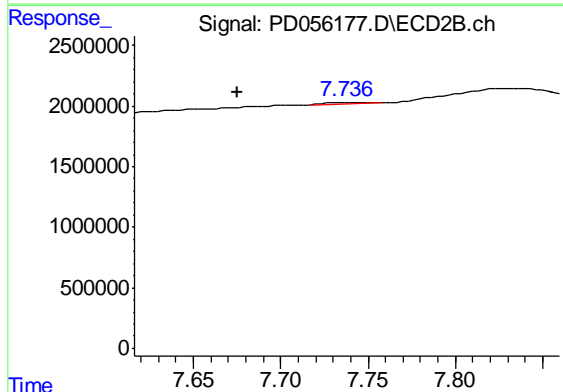
R.T.: 7.459 min  
 Delta R.T.: -0.070 min  
 Response: 128192  
 Conc: 0.21 ng/ml



#21 Endrin ketone

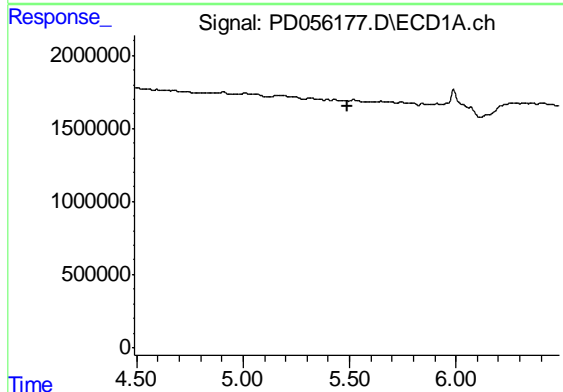
R.T.: 0.000 min  
 Exp R.T. : 6.913 min  
 Response: 0  
 Conc: N.D.

Instrument :  
 ECD\_D  
 ClientSampled :  
 JLLR0



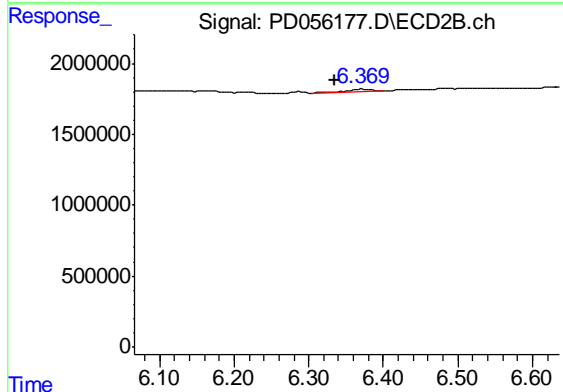
#21 Endrin ketone

R.T.: 7.737 min  
 Delta R.T.: 0.062 min  
 Response: 158646  
 Conc: 0.12 ng/ml



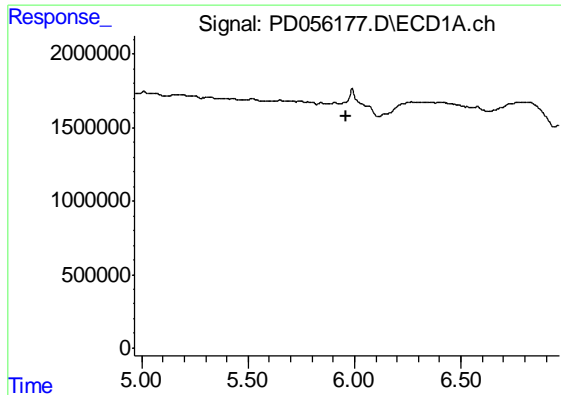
#22 Toxaphene-1

R.T.: 0.000 min  
 Exp R.T. : 5.488 min  
 Response: 0  
 Conc: N.D.



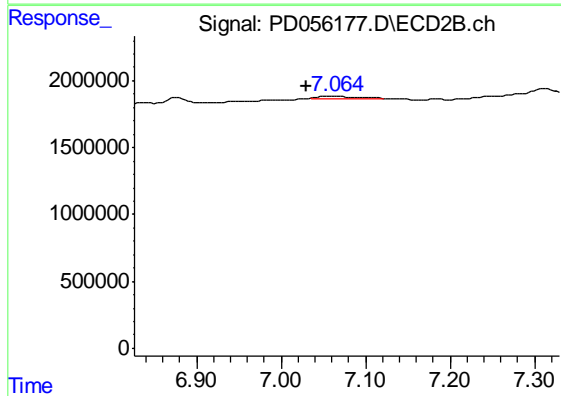
#22 Toxaphene-1

R.T.: 6.371 min  
 Delta R.T.: 0.035 min  
 Response: 362796  
 Conc: 35.33 ng/ml

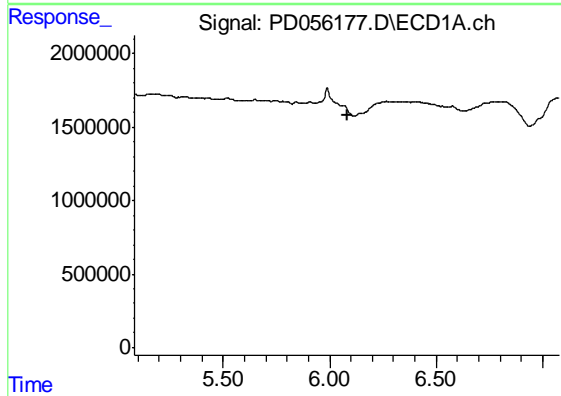


#24 Toxaphene-3  
 R.T.: 0.000 min  
 Exp R.T. : 5.964 min  
 Response: 0  
 Conc: N.D.

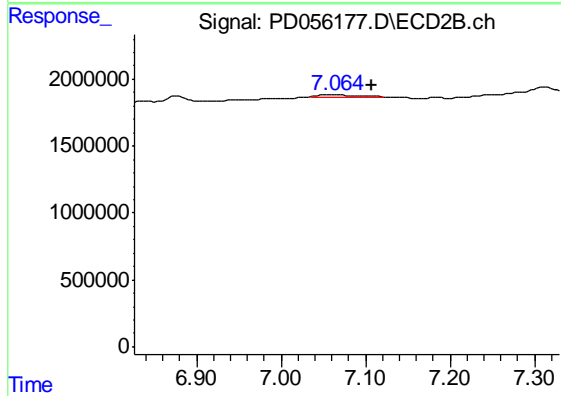
Instrument :  
 ECD\_D  
 ClientSampleId :  
 JLLR0



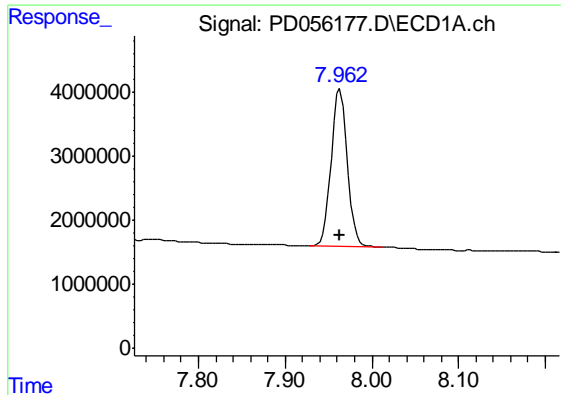
#24 Toxaphene-3  
 R.T.: 7.066 min  
 Delta R.T.: 0.037 min  
 Response: 380899  
 Conc: 20.55 ng/ml



#25 Toxaphene-4  
 R.T.: 0.000 min  
 Exp R.T. : 6.082 min  
 Response: 0  
 Conc: N.D.



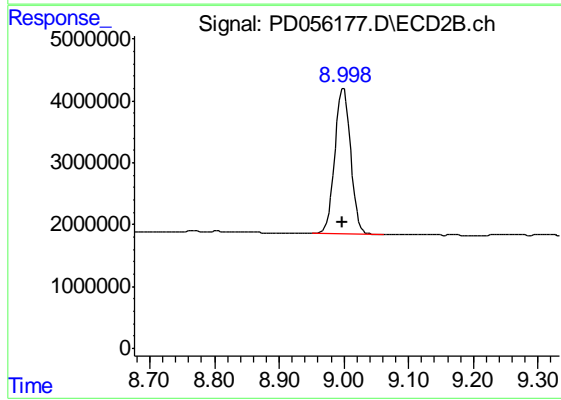
#25 Toxaphene-4  
 R.T.: 7.066 min  
 Delta R.T.: -0.040 min  
 Response: 380899  
 Conc: 7.39 ng/ml



#27 Decachlorobiphenyl

R.T.: 7.963 min  
Delta R.T.: 0.000 min  
Response: 31839733  
Conc: 39.06 ng/ml

Instrument :  
ECD\_D  
ClientSampleId :  
JLLR0



#27 Decachlorobiphenyl

R.T.: 8.999 min  
Delta R.T.: 0.002 min  
Response: 39413565  
Conc: 34.71 ng/ml