

Data Path : Z:\pestpcbsrv\HPCHEM1\ECD\_D\Data\PD112223\  
 Data File : PD079816.D  
 Signal(s) : Signal #1: ECD1A.ch Signal #2: ECD2B.ch  
 Acq On : 22 Nov 2023 17:40  
 Operator : AR\AJ  
 Sample : 05455-09MS  
 Misc :  
 ALS Vial : 10 Sample Multiplier: 1

Instrument :  
 ECD\_D  
 ClientSampleId :

Integration File signal 1: autoint1.e  
 Integration File signal 2: autoint2.e  
 Quant Time: Nov 22 20:40:16 2023  
 Quant Method : Z:\pestpcbsrv\HPCHEM1\ECD\_D\Method\PD110623CLP.M  
 Quant Title : GC Extractables  
 QLast Update : Sat Nov 04 07:14:58 2023  
 Response via : Initial Calibration  
 Integrator: ChemStation

Volume Inj. : 1 µl  
 Signal #1 Phase : ZB-MR2 Signal #2 Phase: ZB-MR2  
 Signal #1 Info : 30M x 0.32mm x0.5 Signal #2 Info : 30M x 0.32mm x 0.25µm

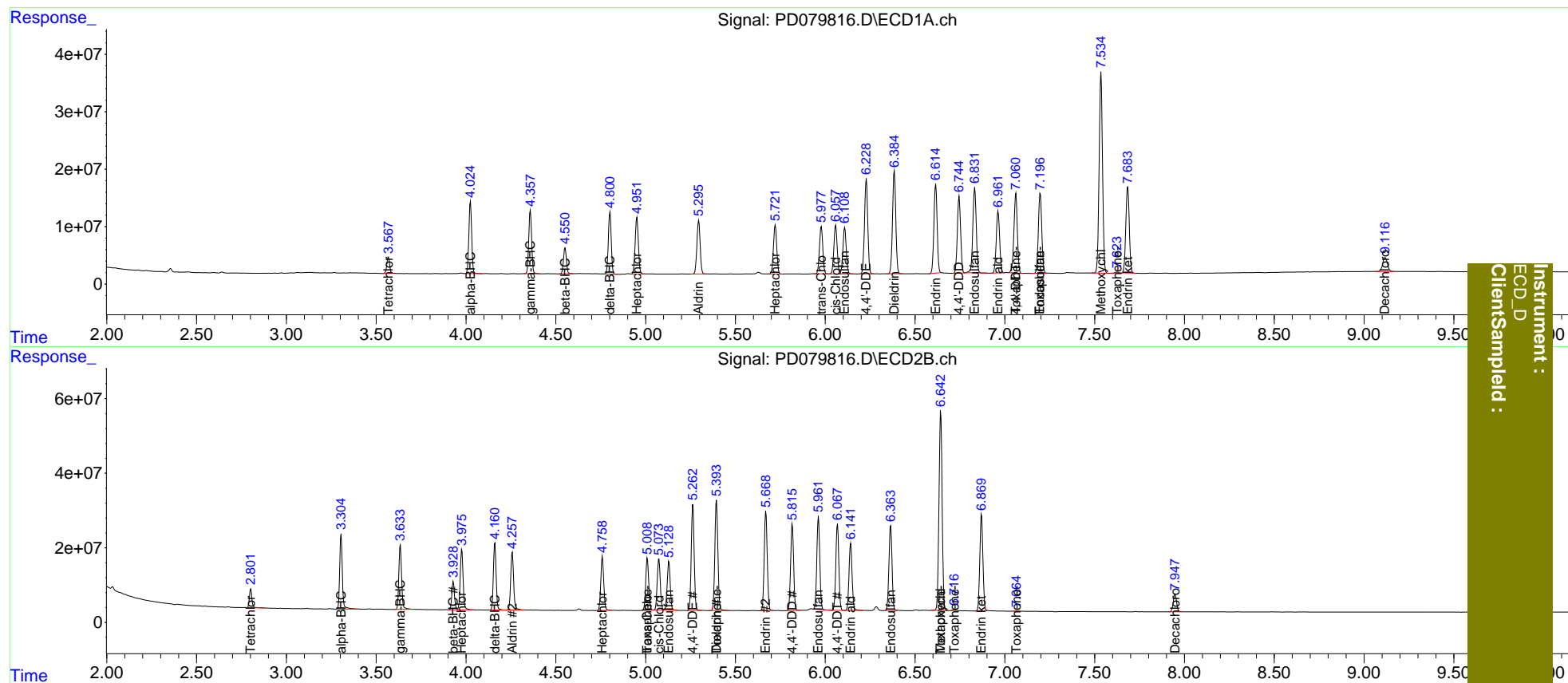
Compound	RT#1	RT#2	Resp#1	Resp#2	ng/ml	ng/ml
System Monitoring Compounds						
1) SA Tetrachlo...	3.568	2.802	30921538	47796284	21.174	20.896
27) SA Decachlor...	9.117	7.948	44459623	61537583	25.054	25.775
Target Compounds						
2) A alpha-BHC	4.025	3.305	135.6E6	205.3E6	54.714	56.619
3) MA gamma-BHC...	4.358	3.635	123.0E6	184.4E6	52.042	53.663
4) MA Heptachlor	4.952	3.977	121.7E6	181.1E6	48.590	54.284
5) MB Aldrin	5.296	4.258	117.4E6	175.8E6	50.080	54.031
6) B beta-BHC	4.552	3.929	50667541	76832702	46.664	46.916
7) B delta-BHC	4.802	4.161	120.8E6	189.9E6	48.478	53.163
8) Heptachlo...	5.722	4.760	109.2E6	166.5E6	49.266	53.823
9) A Endosulfan I	6.109	5.130	103.5E6	149.5E6	50.083	53.921
10) B trans-Chl...	5.978	5.010	105.6E6	160.5E6	49.610	54.062
11) B cis-Chlor...	6.058	5.074	107.6E6	159.7E6	49.381	52.623
12) B 4,4'-DDE	6.229	5.263	207.0E6	318.0E6	104.840	113.580
13) MA Dieldrin	6.385	5.395	226.1E6	349.4E6	102.798	109.722
14) MA Endrin	6.615	5.670	194.2E6	312.8E6	106.424	114.201
15) B Endosulfa...	6.833	5.963	196.6E6	287.3E6	103.336	110.641
16) A 4,4'-DDD	6.746	5.817	169.0E6	265.2E6	104.308	112.668
17) MA 4,4'-DDT	7.062	6.069	183.0E6	269.0E6	107.403	111.972
18) B Endrin al...	6.963	6.142	141.8E6	213.8E6	95.126	105.656
19) B Endosulfa...	7.197	6.364	184.8E6	270.7E6	99.237	108.926
20) A Methoxychlor	7.536	6.643	457.4E6	650.1E6	496.199	505.749
21) B Endrin ke...	7.684	6.870	200.1E6	310.4E6	102.425	109.187
22) Toxaphene-1	0.000	5.010	0	160.5E6	N.D.	9598.384
23) Toxaphene-2	0.000	5.395	0	349.4E6	N.D.	20790.816
24) Toxaphene-3	7.062	6.643	183.0E6	650.1E6	3258.294	11289.070 #
25) Toxaphene-4	7.197	6.718f	184.8E6	1912018	4407.777	24.291 #
26) Toxaphene-5	7.625	7.066	1062430	264152	33.757	7.911 #

(f)=RT Delta > 1/2 Window (#)=Amounts differ by > 25% (m)=manual int.

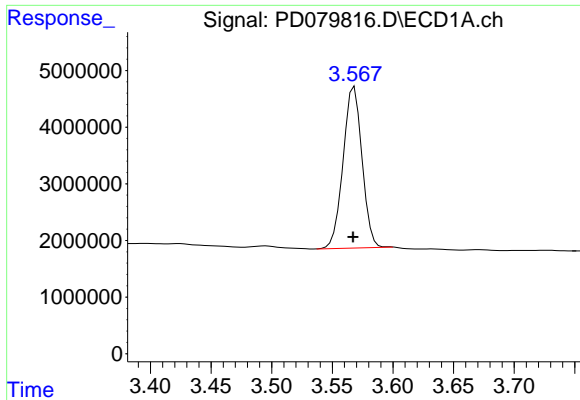
Data Path : Z:\pestpcbsrv\HPCHEM1\ECD\_D\Data\PD112223\  
 Data File : PD079816.D  
 Signal(s) : Signal #1: ECD1A.ch Signal #2: ECD2B.ch  
 Acq On : 22 Nov 2023 17:40  
 Operator : AR\AJ  
 Sample : 05455-09MS  
 Misc :  
 ALS Vial : 10 Sample Multiplier: 1

Integration File signal 1: autoint1.e  
 Integration File signal 2: autoint2.e  
 Quant Time: Nov 22 20:40:16 2023  
 Quant Method : Z:\pestpcbsrv\HPCHEM1\ECD\_D\Method\PD110623CLP.M  
 Quant Title : GC Extractables  
 QLast Update : Sat Nov 04 07:14:58 2023  
 Response via : Initial Calibration  
 Integrator: ChemStation

Volume Inj. : 1 µl  
 Signal #1 Phase : ZB-MR1 Signal #2 Phase: ZB-MR2  
 Signal #1 Info : 30M x 0.32mm x0.5 Signal #2 Info : 30M x 0.32mm x 0.25µm



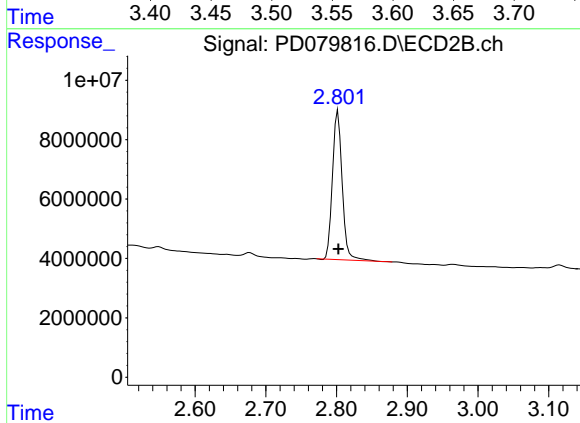
Instrument :  
 ECD\_D  
 ClientSampled :



#1 Tetrachloro-m-xylene

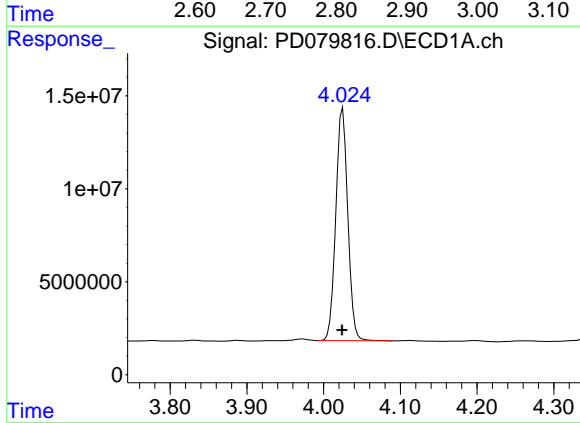
R.T.: 3.568 min  
 Delta R.T.: 0.001 min  
 Response: 30921538  
 Conc: 21.17 ng/ml

Instrument :  
 ECD\_D  
 ClientSampleId :



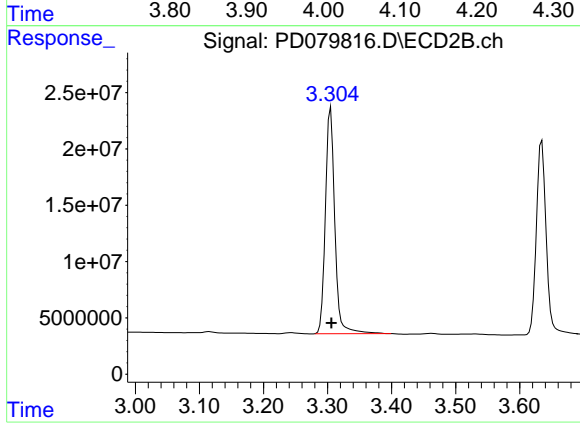
#1 Tetrachloro-m-xylene

R.T.: 2.802 min  
 Delta R.T.: 0.000 min  
 Response: 47796284  
 Conc: 20.90 ng/ml



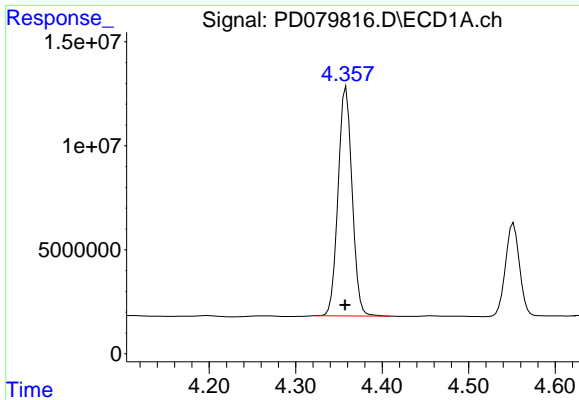
#2 alpha-BHC

R.T.: 4.025 min  
 Delta R.T.: 0.000 min  
 Response: 135562238  
 Conc: 54.71 ng/ml



#2 alpha-BHC

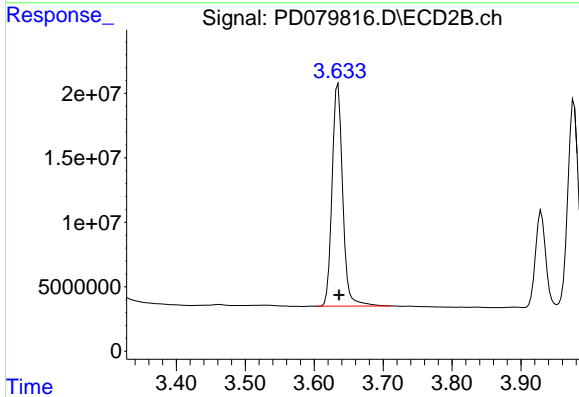
R.T.: 3.305 min  
 Delta R.T.: 0.000 min  
 Response: 205291226  
 Conc: 56.62 ng/ml



#3 gamma-BHC (Lindane)

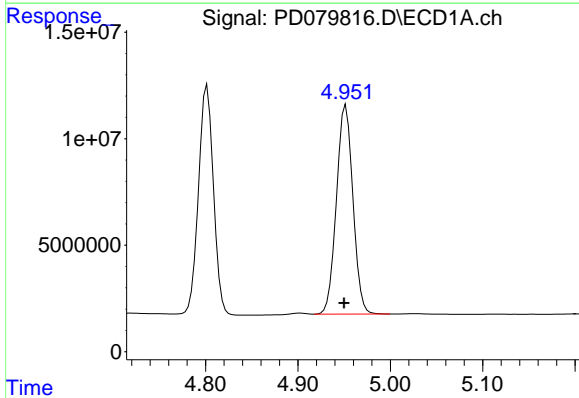
R.T.: 4.358 min  
Delta R.T.: 0.001 min  
Response: 122955648  
Conc: 52.04 ng/ml

Instrument :  
ECD\_D  
ClientSampleId :



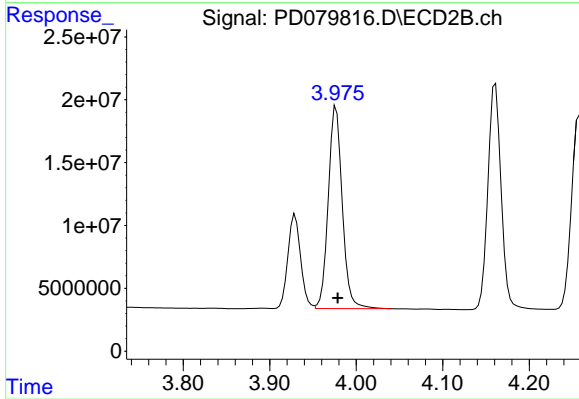
#3 gamma-BHC (Lindane)

R.T.: 3.635 min  
Delta R.T.: -0.001 min  
Response: 184358742  
Conc: 53.66 ng/ml



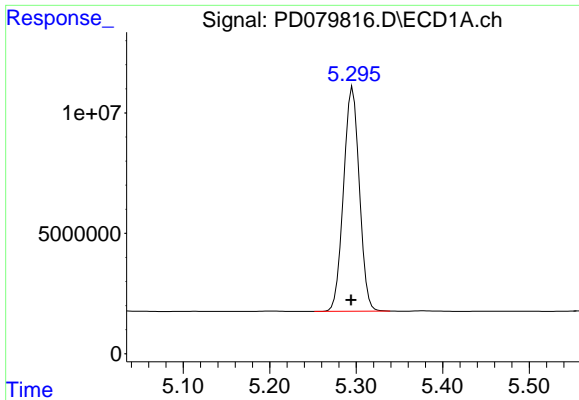
#4 Heptachlor

R.T.: 4.952 min  
Delta R.T.: 0.002 min  
Response: 121700609  
Conc: 48.59 ng/ml



#4 Heptachlor

R.T.: 3.977 min  
Delta R.T.: -0.002 min  
Response: 181103379  
Conc: 54.28 ng/ml



#5 Aldrin

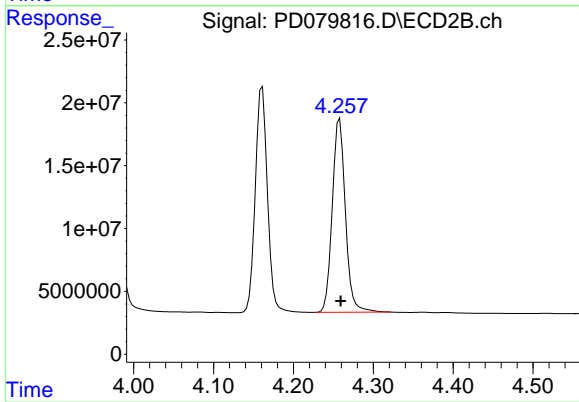
R.T.: 5.296 min

Delta R.T.: 0.002 min

Response: 117437535

Conc: 50.08 ng/ml

Instrument :  
ECD\_D  
ClientSampleId :



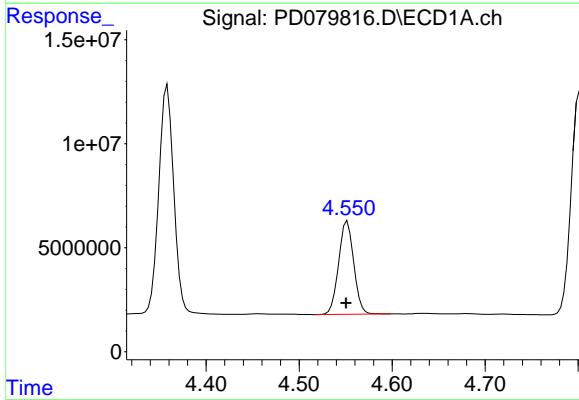
#5 Aldrin

R.T.: 4.258 min

Delta R.T.: -0.002 min

Response: 175808476

Conc: 54.03 ng/ml



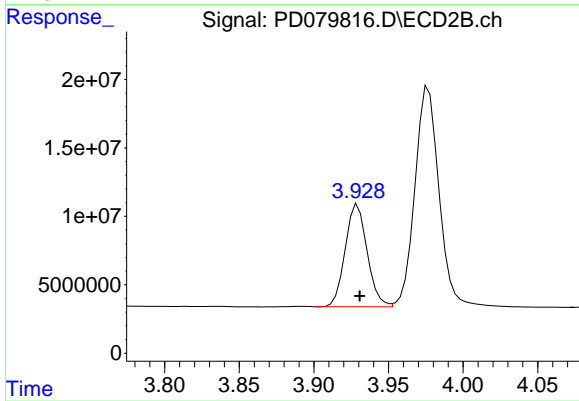
#6 beta-BHC

R.T.: 4.552 min

Delta R.T.: 0.001 min

Response: 50667541

Conc: 46.66 ng/ml



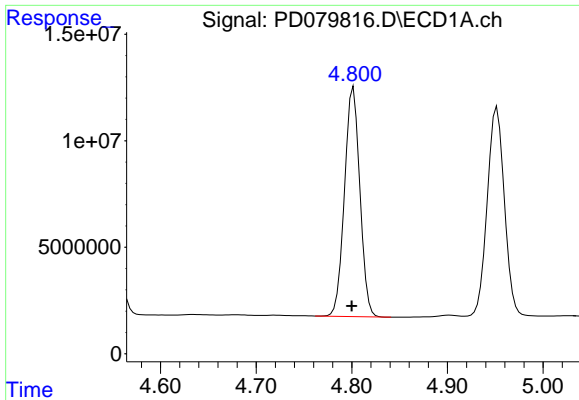
#6 beta-BHC

R.T.: 3.929 min

Delta R.T.: -0.001 min

Response: 76832702

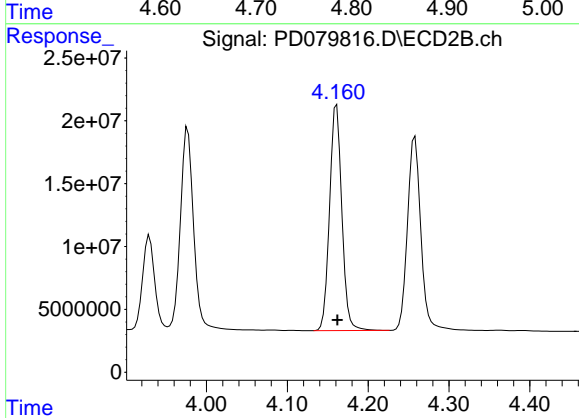
Conc: 46.92 ng/ml



#7 delta-BHC

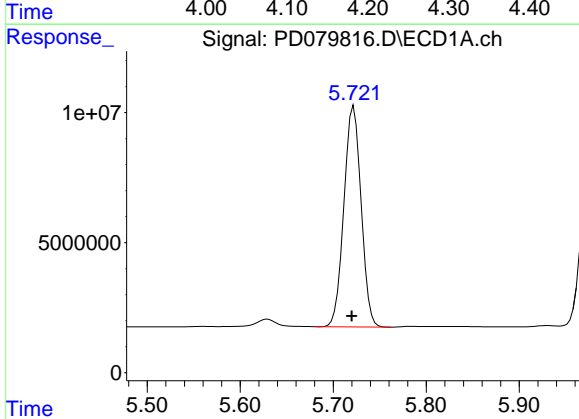
R.T.: 4.802 min  
 Delta R.T.: 0.002 min  
 Response: 120804612  
 Conc: 48.48 ng/ml

Instrument :  
 ECD\_D  
 ClientSampleId :



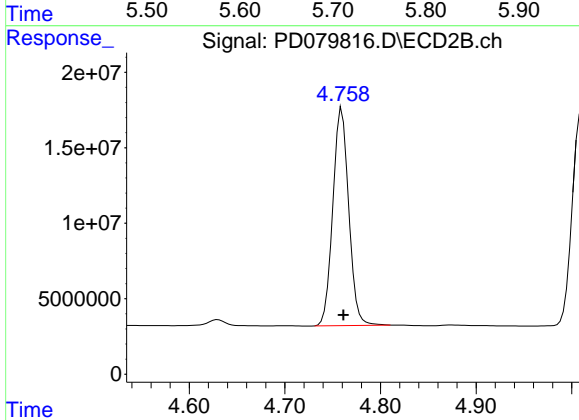
#7 delta-BHC

R.T.: 4.161 min  
 Delta R.T.: -0.001 min  
 Response: 189947943  
 Conc: 53.16 ng/ml



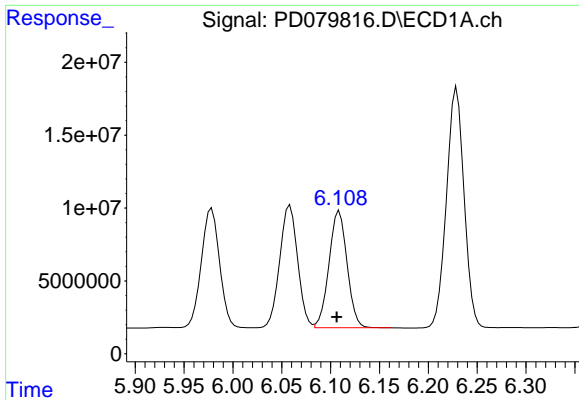
#8 Heptachlor epoxide

R.T.: 5.722 min  
 Delta R.T.: 0.002 min  
 Response: 109217966  
 Conc: 49.27 ng/ml



#8 Heptachlor epoxide

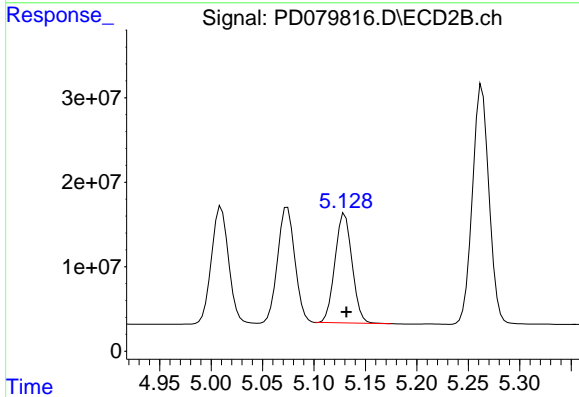
R.T.: 4.760 min  
 Delta R.T.: -0.002 min  
 Response: 166477853  
 Conc: 53.82 ng/ml



#9 Endosulfan I

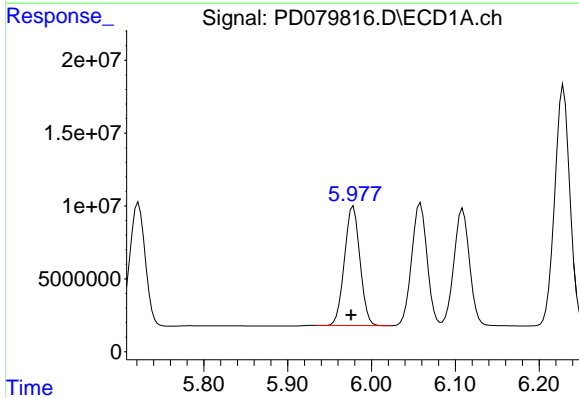
R.T.: 6.109 min  
 Delta R.T.: 0.003 min  
 Response: 103531254  
 Conc: 50.08 ng/ml

Instrument :  
 ECD\_D  
 ClientSampleId :



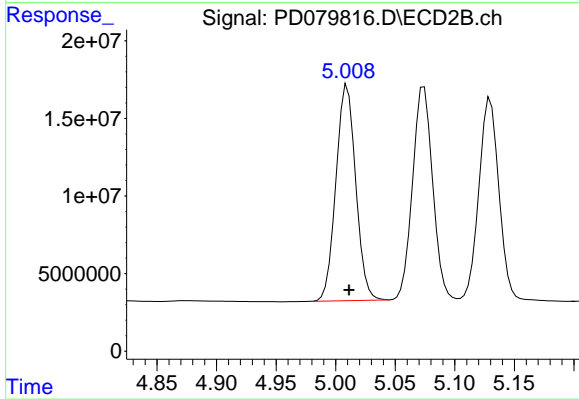
#9 Endosulfan I

R.T.: 5.130 min  
 Delta R.T.: -0.002 min  
 Response: 149483180  
 Conc: 53.92 ng/ml



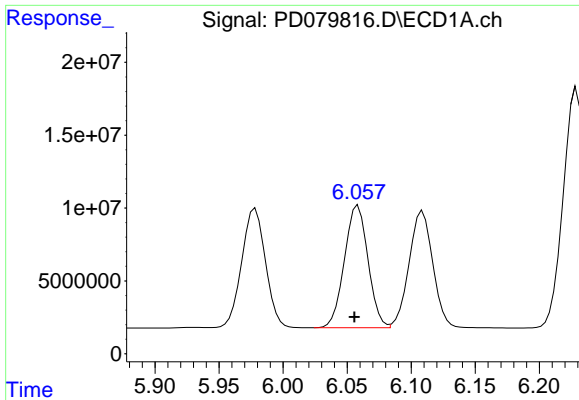
#10 trans-Chlordane

R.T.: 5.978 min  
 Delta R.T.: 0.003 min  
 Response: 105556058  
 Conc: 49.61 ng/ml



#10 trans-Chlordane

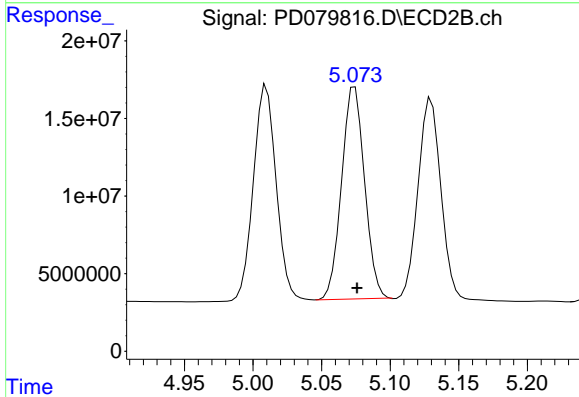
R.T.: 5.010 min  
 Delta R.T.: -0.002 min  
 Response: 160493723  
 Conc: 54.06 ng/ml



#11 cis-Chlordane

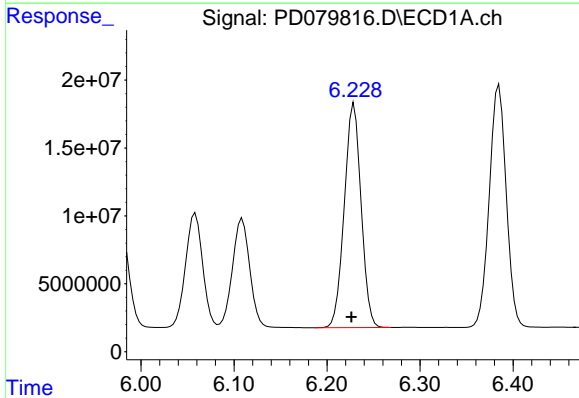
R.T.: 6.058 min  
 Delta R.T.: 0.003 min  
 Response: 107550894  
 Conc: 49.38 ng/ml

Instrument :  
 ECD\_D  
 ClientSampleId :



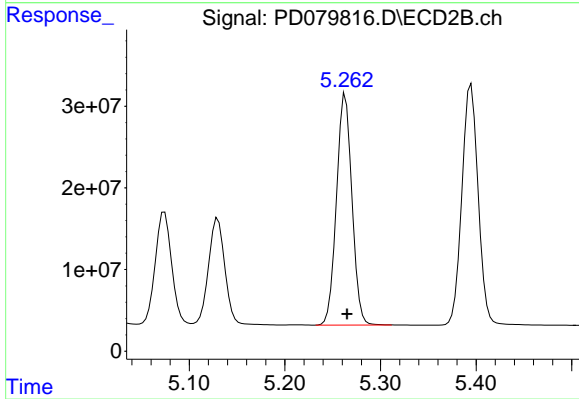
#11 cis-Chlordane

R.T.: 5.074 min  
 Delta R.T.: -0.002 min  
 Response: 159736356  
 Conc: 52.62 ng/ml



#12 4,4'-DDE

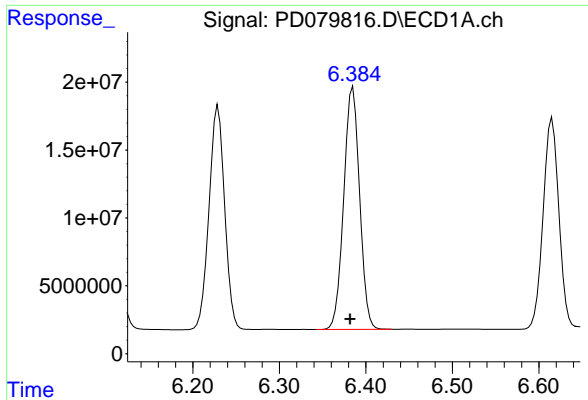
R.T.: 6.229 min  
 Delta R.T.: 0.003 min  
 Response: 206978665  
 Conc: 104.84 ng/ml



#12 4,4'-DDE

R.T.: 5.263 min  
 Delta R.T.: -0.002 min  
 Response: 318040282  
 Conc: 113.58 ng/ml

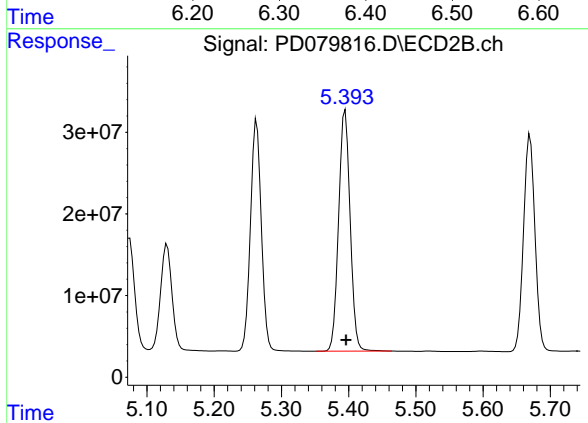




#13 Dieldrin

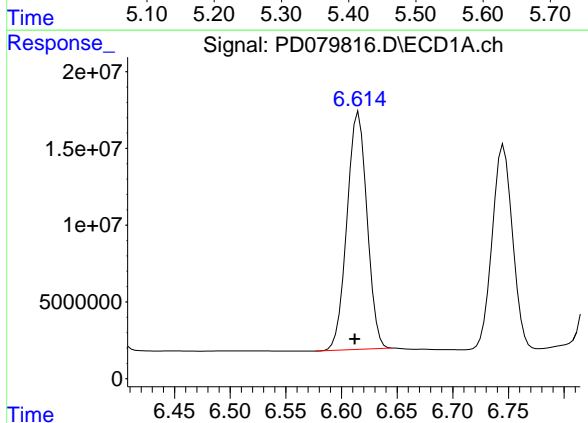
R.T.: 6.385 min  
 Delta R.T.: 0.003 min  
 Response: 226138710  
 Conc: 102.80 ng/ml

Instrument :  
 ECD\_D  
 ClientSampleId :



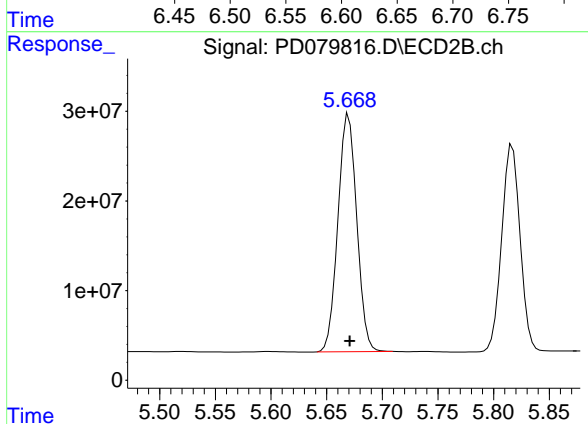
#13 Dieldrin

R.T.: 5.395 min  
 Delta R.T.: -0.001 min  
 Response: 349379212  
 Conc: 109.72 ng/ml



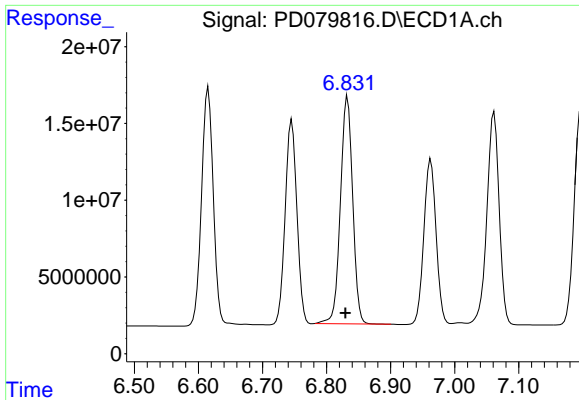
#14 Endrin

R.T.: 6.615 min  
 Delta R.T.: 0.004 min  
 Response: 194177487  
 Conc: 106.42 ng/ml



#14 Endrin

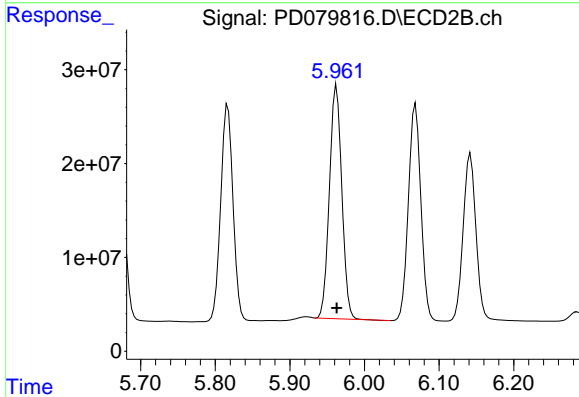
R.T.: 5.670 min  
 Delta R.T.: -0.001 min  
 Response: 312770884  
 Conc: 114.20 ng/ml



#15 Endosulfan II

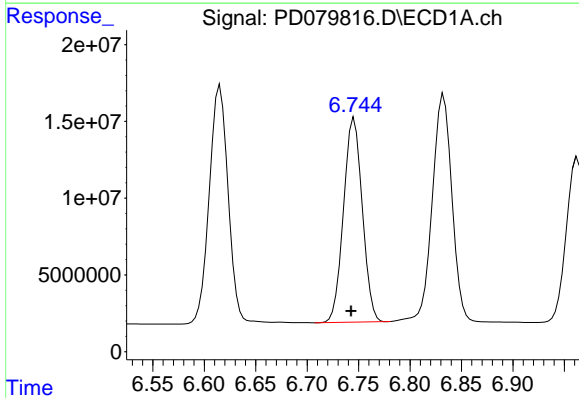
R.T.: 6.833 min  
 Delta R.T.: 0.003 min  
 Response: 196593094  
 Conc: 103.34 ng/ml

Instrument :  
 ECD\_D  
 ClientSampleId :



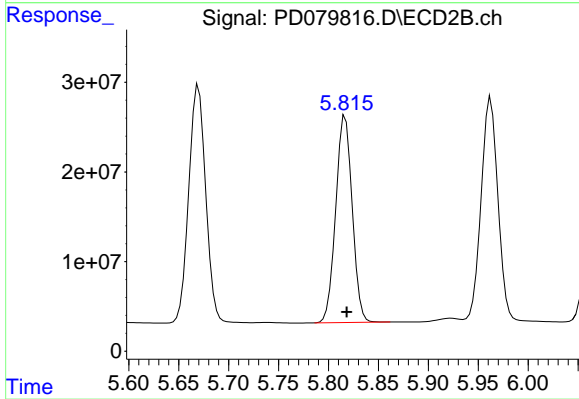
#15 Endosulfan II

R.T.: 5.963 min  
 Delta R.T.: 0.000 min  
 Response: 287349904  
 Conc: 110.64 ng/ml



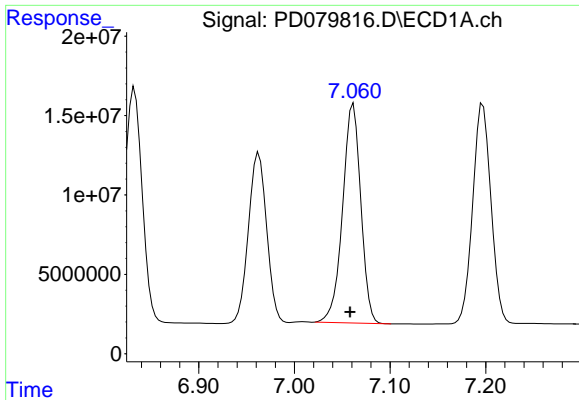
#16 4,4'-DDD

R.T.: 6.746 min  
 Delta R.T.: 0.003 min  
 Response: 168971892  
 Conc: 104.31 ng/ml



#16 4,4'-DDD

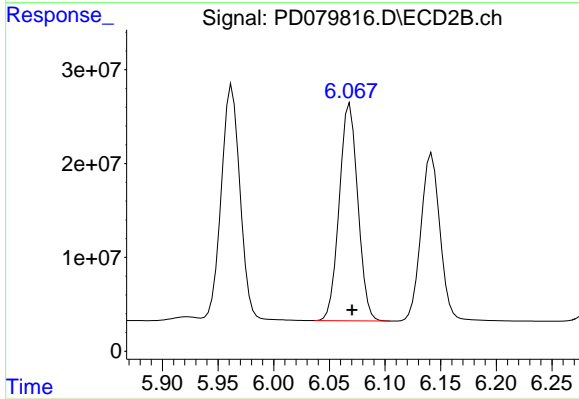
R.T.: 5.817 min  
 Delta R.T.: -0.001 min  
 Response: 265235088  
 Conc: 112.67 ng/ml



#17 4,4'-DDT

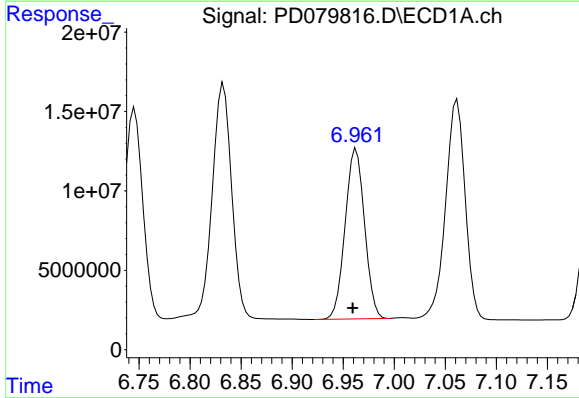
R.T.: 7.062 min  
 Delta R.T.: 0.004 min  
 Response: 182979693  
 Conc: 107.40 ng/ml

Instrument :  
 ECD\_D  
 ClientSampleId :



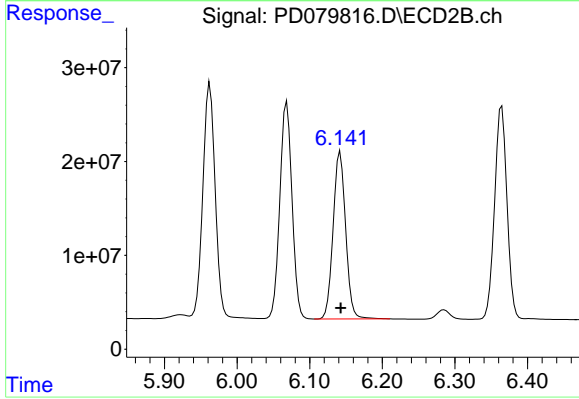
#17 4,4'-DDT

R.T.: 6.069 min  
 Delta R.T.: -0.002 min  
 Response: 268965924  
 Conc: 111.97 ng/ml



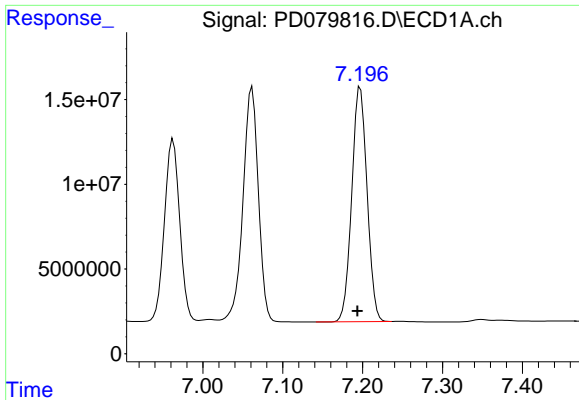
#18 Endrin aldehyde

R.T.: 6.963 min  
 Delta R.T.: 0.003 min  
 Response: 141786772  
 Conc: 95.13 ng/ml



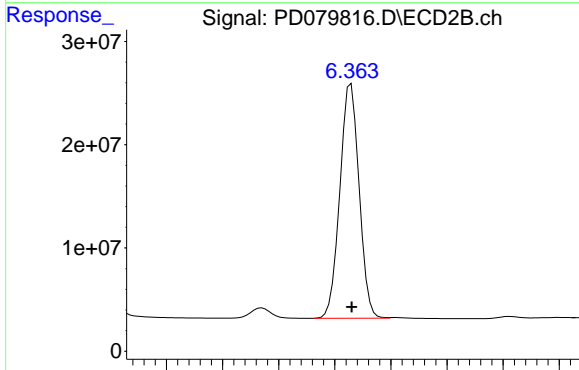
#18 Endrin aldehyde

R.T.: 6.142 min  
 Delta R.T.: 0.000 min  
 Response: 213808916  
 Conc: 105.66 ng/ml

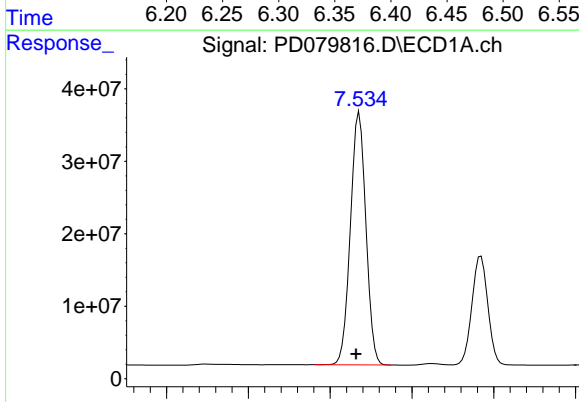


#19 Endosulfan Sulfate  
 R.T.: 7.197 min  
 Delta R.T.: 0.004 min  
 Response: 184780286  
 Conc: 99.24 ng/ml

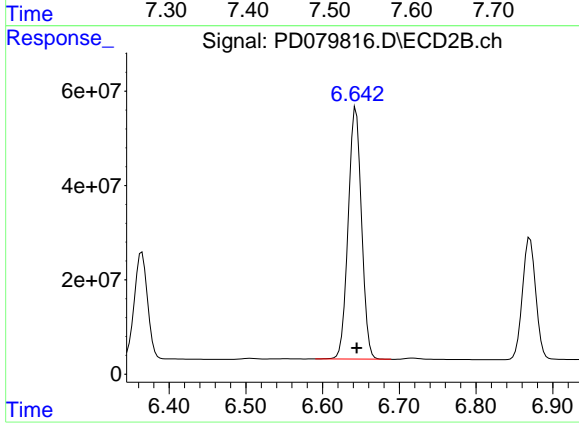
Instrument :  
 ECD\_D  
 ClientSampleId :



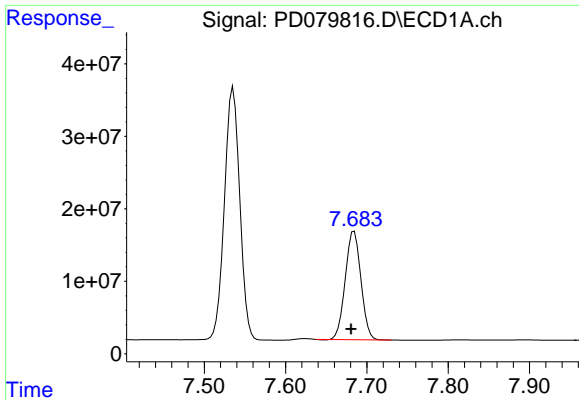
#19 Endosulfan Sulfate  
 R.T.: 6.364 min  
 Delta R.T.: 0.000 min  
 Response: 270659151  
 Conc: 108.93 ng/ml



#20 Methoxychlor  
 R.T.: 7.536 min  
 Delta R.T.: 0.004 min  
 Response: 457423657  
 Conc: 496.20 ng/ml



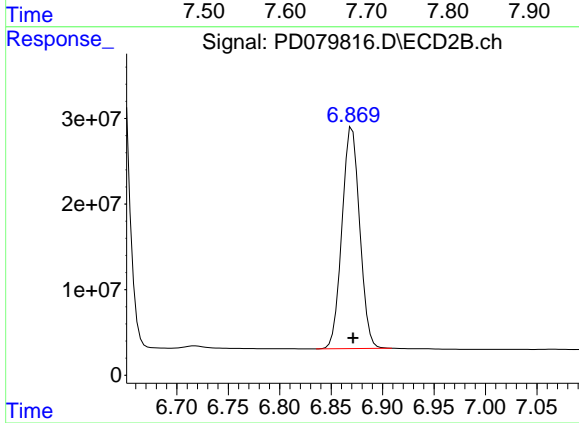
#20 Methoxychlor  
 R.T.: 6.643 min  
 Delta R.T.: -0.001 min  
 Response: 650075325  
 Conc: 505.75 ng/ml



#21 Endrin ketone

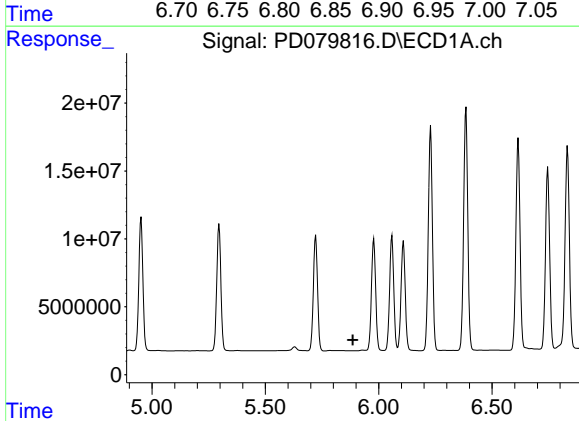
R.T.: 7.684 min  
 Delta R.T.: 0.004 min  
 Response: 200115668  
 Conc: 102.42 ng/ml

Instrument :  
 ECD\_D  
 ClientSampleId :



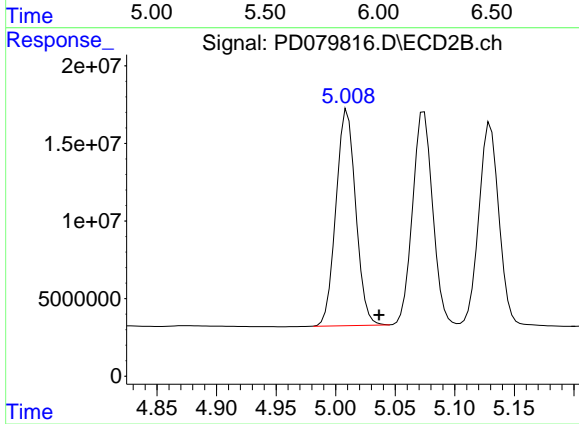
#21 Endrin ketone

R.T.: 6.870 min  
 Delta R.T.: 0.000 min  
 Response: 310416158  
 Conc: 109.19 ng/ml



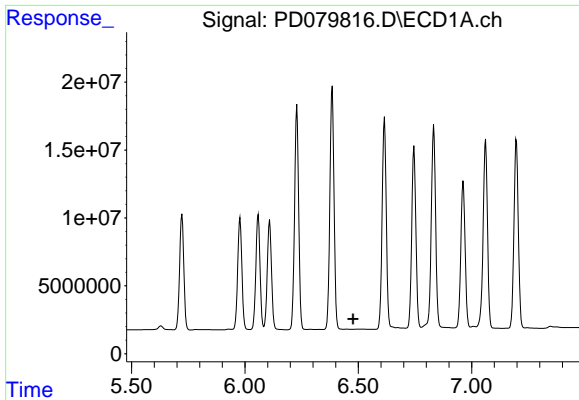
#22 Toxaphene-1

R.T.: 0.000 min  
 Exp R.T. : 5.886 min  
 Response: 0  
 Conc: N.D.



#22 Toxaphene-1

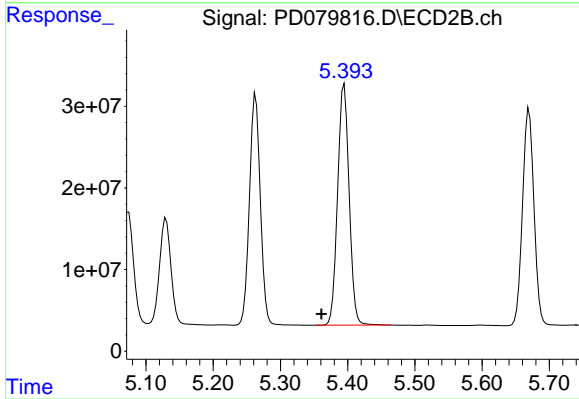
R.T.: 5.010 min  
 Delta R.T.: -0.027 min  
 Response: 160493723  
 Conc: 9598.38 ng/ml



#23 Toxaphene-2

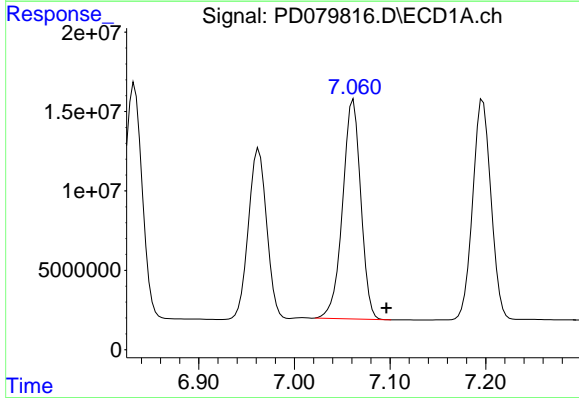
R.T.: 0.000 min  
 Exp R.T.: 6.477 min  
 Response: 0  
 Conc: N.D.

Instrument :  
 ECD\_D  
 ClientSampleId :



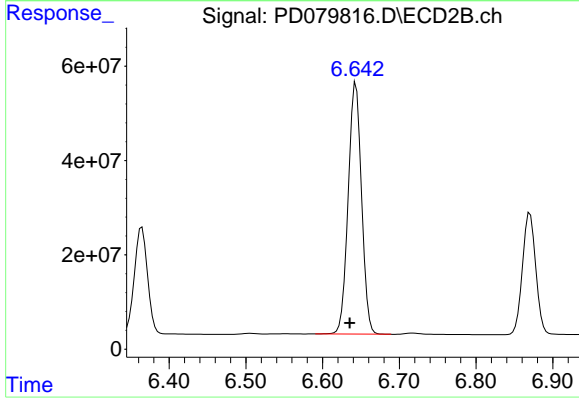
#23 Toxaphene-2

R.T.: 5.395 min  
 Delta R.T.: 0.034 min  
 Response: 349379212  
 Conc: 20790.82 ng/ml



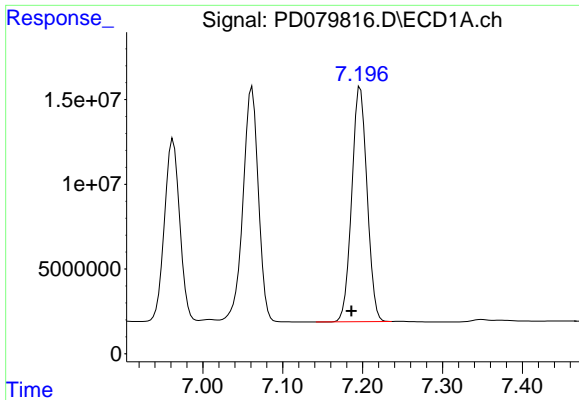
#24 Toxaphene-3

R.T.: 7.062 min  
 Delta R.T.: -0.035 min  
 Response: 182979693  
 Conc: 3258.29 ng/ml



#24 Toxaphene-3

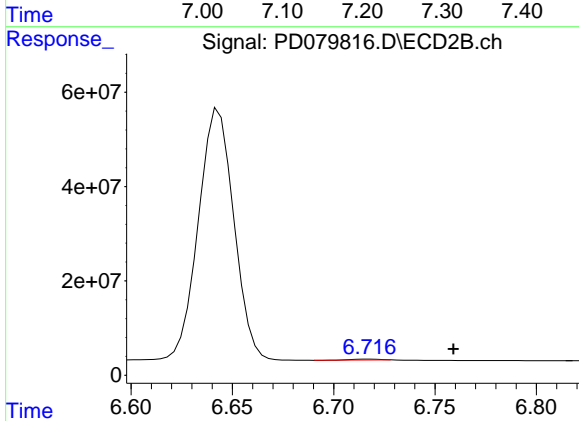
R.T.: 6.643 min  
 Delta R.T.: 0.008 min  
 Response: 650075325  
 Conc: 11289.07 ng/ml



#25 Toxaphene-4

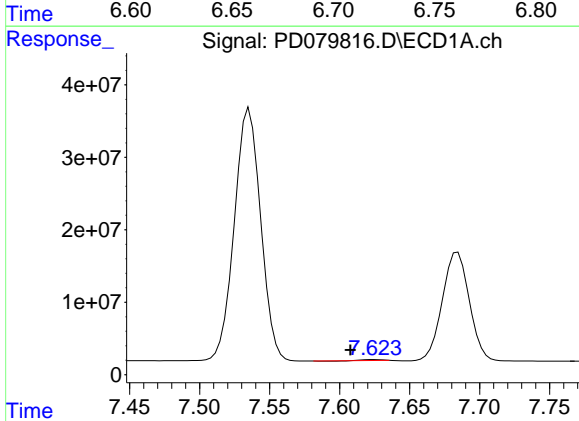
R.T.: 7.197 min  
 Delta R.T.: 0.011 min  
 Response: 184780286  
 Conc: 4407.78 ng/ml

Instrument :  
 ECD\_D  
 ClientSampleId :



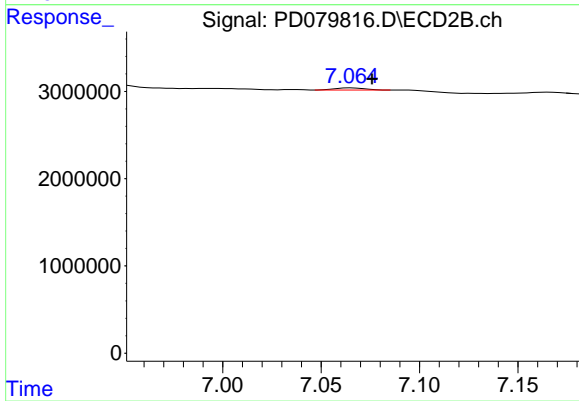
#25 Toxaphene-4

R.T.: 6.718 min  
 Delta R.T.: -0.041 min  
 Response: 1912018  
 Conc: 24.29 ng/ml



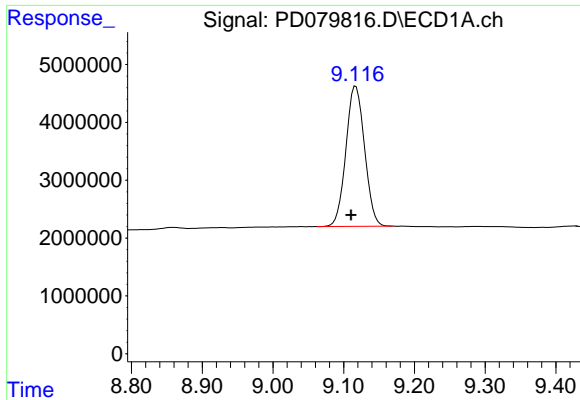
#26 Toxaphene-5

R.T.: 7.625 min  
 Delta R.T.: 0.017 min  
 Response: 1062430  
 Conc: 33.76 ng/ml



#26 Toxaphene-5

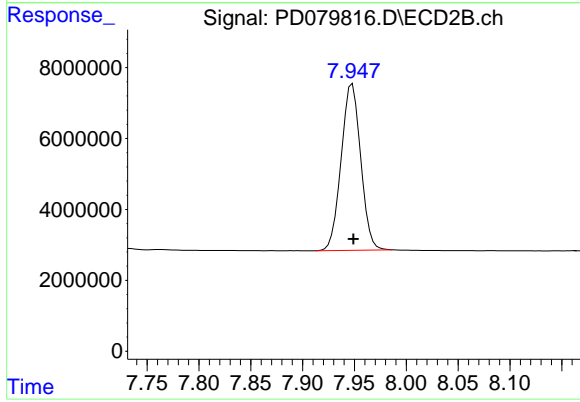
R.T.: 7.066 min  
 Delta R.T.: -0.010 min  
 Response: 264152  
 Conc: 7.91 ng/ml



#27 Decachlorobiphenyl

R.T.: 9.117 min  
Delta R.T.: 0.007 min  
Response: 44459623  
Conc: 25.05 ng/ml

Instrument :  
ECD\_D  
ClientSampleId :



#27 Decachlorobiphenyl

R.T.: 7.948 min  
Delta R.T.: -0.001 min  
Response: 61537583  
Conc: 25.78 ng/ml